

SpireEngSmecScan  
File: H\_CRP\_SPI\_SCAN.xls  
Author: R. Biggins



## Procedure Summary

### Objectives

This procedure will scan the SMEC, standalone, while SPIRE is in REDY mode.

This is a contingency procedure \*only\* to be executed in cases where a planned Spectrometer OD does not go ahead, or has not occurred in more than 14 days (approx).  
If such a situation does arise, the SPIRE ICC will formally request the MOC to execute this procedure.

The procedure scans the SMEC while in REDY mode (without switching on the detectors), while SPIRE is PRIME.

RT science will be generated. Ensure stores 1 and 2 are not being dumped while executing this procedure.  
It may be desirable to disable RT science after running this procedure. Check and co-ordinate with SOM. If required, sequence HDF1013B will disable RTscience

OBSID will need to be set manually. The OBSID value to use will be supplied whenever the request for execution is made.

Based on procedure: SpireEngSmecScan  
Version number:2  
Generated:06/07/2010

### Summary of Constraints

SPIRE must be in REDY mode and PRIME. Co-ordinate with SOM, ICCs and the powers that be to find a suitable time when there are no HIFI or PACS incidents.

### Spacecraft Configuration

#### Start of Procedure

SPIRE mode =REDY

#### End of Procedure

SPIRE mode = REDY

### Reference File(s)

#### Input Command Sequences

#### Output Command Sequences

HRSSCAN

### Referenced Displays

ANDs	GRDs	SLDs
SA_7_559		
ZAZ90999		

SpireEngSmecScan  
 File: H\_CRP\_SPI\_SCAN.xls  
 Author: R. Biggins



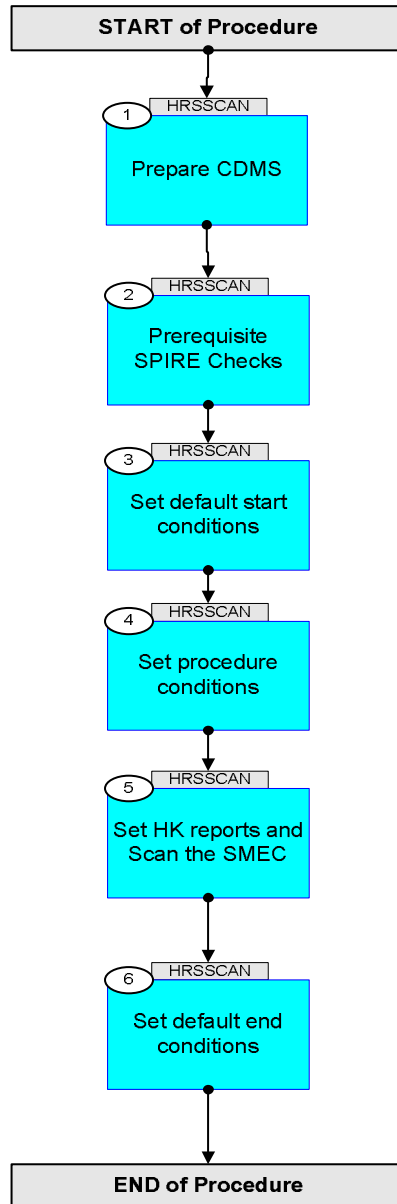
**Configuration Control Information**

DATE	FOP ISSUE	VERSION	MODIFICATION DESCRIPTION	AUTHOR	SPR REF
16/07/2010		1	Created	L.Lucas-hp	
16/07/2010		1.01	Validation : Included setting bus profile and enabling VC1	L.Lucas-hp	
16/07/2010		2	just checking	L.Lucas-hp	
05/04/2011	3.1	3	Minimum delta between TCs updated to 1 second	R. Biggins	

SpireEngSmecScan  
File: H\_CRP\_SPI\_SCAN.xls  
Author: R. Biggins



## Procedure Flowchart Overview



SpireEngSmecScan  
 File: H\_CRP\_SPI\_SCAN.xls  
 Author: R. Biggins



Step No.	Time	Activity/Remarks	TC/TLM	Display/ Branch
<b>Beginning of Procedure</b>				
TC Seq. Name : HRSSCAN (ScansMECREDY)  TimeTag Type: Y Sub Schedule ID:  <input type="checkbox"/>				
1		Prepare CDMS		Next Step: 2
		The CDMS should be prepared, by enabling VC1 and by setting SPIRE bus profile to PRIME		
1.1		Set SPIRE to PRIME		<input type="checkbox"/>
		Ensure neither HIFI nor PACS instrumetn operations are on-going or about to begin. Then set SPIRE busprofile to PRIME		
		Execute Telecommand <div style="text-align: right;"><b>SelectActiveSCBP</b></div> Command Parameter(s) : <div style="text-align: right;">SCBP                    DH049160                    SCBP_03</div> TC Control Flags : <div style="text-align: right;">GBM IL DSE --Y -- ---</div> Subsch. ID : 10 Det. descr. : Select Active SCBP from SCBP Table	DC819160	
1.2		Enable VC1 RTS		<input type="checkbox"/>
	ET=+ UT=+00.00.01	Execute Telecommand <div style="text-align: right;"><b>SelDownlinkTMStorage</b></div> Command Parameter(s) : <div style="text-align: right;">N                    DH019160                    1 &lt;dec&gt; (Def) Application_ID    DH058160                    0 &lt;dec&gt; Type                DH020160                    21 &lt;dec&gt; Sub-Type            DH021160                    1 &lt;dec&gt; Keep_Transmit      DH070160                    Update Transmit_Flag      DH059160                    ENABLED Keep_Storage        DH071160                    Update Storage_Flag        DH060160                    ENABLED</div> TC Control Flags : <div style="text-align: right;">GBM IL DSE  --Y -- ---</div> Subsch. ID : 10 Det. descr. : Select Down-linking/ Storage of Telemetry Packets	DC140160	



SpireEngSmecScan  
 File: H\_CRP\_SPI\_SCAN.xls  
 Author: R. Biggins



Step No.	Time	Activity/Remarks	TC/TLM	Display/ Branch
2.2		TM Checks		<input type="checkbox"/>
		Check Telemetry, for comparison later <b>TM2N</b> <b>SMT1N500</b>		AND=SA_7_559
		Check Telemetry, for comparison later <b>THSK</b> <b>SM00T500</b>		AND=SA_7_559
		Check telemetry, for comparison later <b>MODE</b> <b>SM00M500</b>		AND=SA_7_559
3		Set default start conditions		Next Step: 4
		Note that a <b>TM(5,1)</b> packet [New_Step_Report] is generated after each of the following SET_OBS_STEP telecommands		
	ET=+ UT=+00.00.01	SET_OBS_STEP  Command Parameter(s) : <b>OBSERVATION_STEP</b> <b>SP03N500</b>  TC Control Flags :  <b>GBM IL DSE</b> <b>--Y -- ---</b>  Subsch. ID : 370 Det. descr. : SET OBSERVATION STEP	<b>SET_OBS_STEP</b>  <b>SC003500</b>  <b>0 &lt;hex&gt;</b>	
	ET=+ UT=+00.00.01	SET_BBID  Command Parameter(s) : <b>BUILDING_BLOCK_ID</b> <b>SP01N500</b>  Subsch. ID : 370 Det. descr. : SET BUILDING BLOCK IDENTIFIER	<b>SET_BBID</b>  <b>SC001500</b>  <b>80010001 &lt;hex&gt;</b>	
		Verify Telemetry  <b>BBFULLTYPE</b> <b>SM2LN500</b>	<b>= ClearObs</b>	AND=ZAZ90999
	ET=+ UT=+00.00.01	SET_OBS_STEP  Command Parameter(s) : <b>OBSERVATION_STEP</b> <b>SP03N500</b>  TC Control Flags :  <b>GBM IL DSE</b> <b>--Y -- ---</b>  Subsch. ID : 370 Det. descr. : SET OBSERVATION STEP	<b>SET_OBS_STEP</b>  <b>SC003500</b>  <b>1 &lt;hex&gt;</b>	

SpireEngSmecScan  
 File: H\_CRP\_SPI\_SCAN.xls  
 Author: R. Biggins



Step No.	Time	Activity/Remarks	TC/TLM	Display/ Branch
	ET=+ UT=+00.00.01	SET_OBSID  Command Parameter(s) : OBSERVATION_ID  Subsch. ID : 370 Det. descr. : SET OBSERVATION IDENTIFIER	SET_OBSID  SP00N500  00000000 <hex>	SC000500
		Verify Telemetry  OBSID SM10N500	= 00000000 <hex>	AND=ZAZ90999
	ET=+ UT=+00.00.01	SET_OBS_STEP  Command Parameter(s) : OBSERVATION_STEP  TC Control Flags :  Subsch. ID : 370 Det. descr. : SET OBSERVATION STEP	SET_OBS_STEP  SP03N500  GBM IL DSE --Y -- ---	SC003500  0 <hex>
	ET=+ UT=+00.00.01	SET_BBID  Command Parameter(s) : BUILDING_BLOCK_ID  Subsch. ID : 370 Det. descr. : SET BUILDING BLOCK IDENTIFIER	SET_BBID  SP01N500  80000000 <hex>	SC001500
		Verify Telemetry  BBFULLTYPE SM2LN500	= Null	AND=ZAZ90999
	ET=+ UT=+00.00.01	SET_OBS_STEP  Command Parameter(s) : OBSERVATION_STEP  TC Control Flags :  Subsch. ID : 370 Det. descr. : SET OBSERVATION STEP	SET_OBS_STEP  SP03N500  GBM IL DSE --Y -- ---	SC003500  0 <hex>
	ET=+ UT=+00.00.01	SET_BBID  Command Parameter(s) : BUILDING_BLOCK_ID  Subsch. ID : 370 Det. descr. : SET BUILDING BLOCK IDENTIFIER	SET_BBID  SP01N500  80020001 <hex>	SC001500
		Verify Telemetry  BBFULLTYPE SM2LN500	= SpireBbStartOb	AND=ZAZ90999

SpireEngSmecScan  
 File: H\_CRP\_SPI\_SCAN.xls  
 Author: R. Biggins



Step No.	Time	Activity/Remarks	TC/TLM	Display/ Branch
4		Set procedure conditions		Next Step: 5
	ET=+ UT=+00.00.01	RESET_DRCU_COUNTERS <b>RESET_DRCU_COUNTERS</b> TC Control Flags : <b>GBM IL DSE</b> <b>--Y -- ---</b> Subsch. ID : 370 Det. descr. : RESET DRCU COUNTERS	SCD00505	
		Verify that the TRESET parameter has the same value as the THSK parameter <b>TRESET</b> <b>SM01T500</b>	same as THSK	AND=ZAZ90999
		<b>THSK</b> <b>SM00T500</b>	any	AND=ZAZ90999
		Note that a <b>TM(5,1)</b> packet [New_Step_Report] is generated after each of the following SET_OBS_STEP telecommands		
	ET=+ UT=+00.00.01	SET_OBS_STEP <b>SET_OBS_STEP</b> Command Parameter(s) : <b>OBSERVATION_STEP</b> <b>SP03N500</b> TC Control Flags : <b>GBM IL DSE</b> <b>--Y -- ---</b> Subsch. ID : 370 Det. descr. : SET OBSERVATION STEP	SC003500  1 <hex>	
	ET=+ UT=+00.00.01	SET_OBSID <b>SET_OBSID</b> Command Parameter(s) : <b>OBSERVATION_ID</b> <b>SP00N500</b> Subsch. ID : 370 Det. descr. : SET OBSERVATION IDENTIFIER	SC000500  OBS_ID	
		Verify Telemetry <b>OBSID</b> <b>SM10N500</b>	OBS_ID	AND=ZAZ90999
	ET=+ UT=+00.00.01	SET_OBS_STEP <b>SET_OBS_STEP</b> Command Parameter(s) : <b>OBSERVATION_STEP</b> <b>SP03N500</b> TC Control Flags : <b>GBM IL DSE</b> <b>--Y -- ---</b> Subsch. ID : 370 Det. descr. : SET OBSERVATION STEP	SC003500  0 <hex>	



SpireEngSmecScan  
 File: H\_CRP\_SPI\_SCAN.xls  
 Author: R. Biggins



Step No.	Time	Activity/Remarks	TC/TLM	Display/ Branch
	ET=+ UT=+00.00.01	SET_BBID  SET_BBID  Command Parameter(s) : BUILDING_BLOCK_ID SP01N500  Subsch. ID : 370 Det. descr. : SET BUILDING BLOCK IDENTIFIER	SC001500  86400001 <hex>	
		Verify Telemetry  BBFULLTYPE SM2LN500	= SetNhksampling	AND=ZAZ90999
5		Set HK reports and Scan the SMEC		Next Step: 6
		The following commands can be sent without further checks		
	ET=+ UT=+00.00.01	DEFINE_NEW_HK_REPORT  DEFINE_NEW_HK_REPORT  Command Parameter(s) : HKPCKTID_DEFINENEWHK SPR0N500 HKSID_DEFINENEWHK SPR1N500 HKINTERVAL_DEFINENEWHK SPR2N500 HKREPEAT_DEFINENEWHK SPR3N500 TABLEID_DEFINENEWHK SPR4N500  TC Control Flags :  GBM IL DSE --Y -- ---  Subsch. ID : 370 Det. descr. : DEFINE NEW HOUSEKEEPING PARAMETER REPORT	SCR00500  301 <hex> 301 <hex> 3E8 <hex> 1 <hex> 1 <hex>	
	ET=+ UT=+00.00.02	SET_BBID_RAW  SET_BBID  Command Parameter(s) : BUILDING_BLOCK_ID SP01N500  Subsch. ID : 370 Det. descr. : SET BUILDING BLOCK IDENTIFIER	SC001500  8d5f0001 <hex>	
	ET=+ UT=+00.00.01	SET_OBS_STEP_RAW  SET_OBS_STEP  Command Parameter(s) : OBSERVATION_STEP SP03N500  Subsch. ID : 370 Det. descr. : SET OBSERVATION STEP	SC003500  0 <hex>	

SpireEngSmecScan  
 File: H\_CRP\_SPI\_SCAN.xls  
 Author: R. Biggins



Step No.	Time	Activity/Remarks	TC/TLM	Display/ Branch
	ET=+ UT=+00.00.01	SEND_DRCU_COMMAND_RAW  SEND_DRCU_COMMAND  Command Parameter(s) : DRCUCOMMAND                   SPD4N505 OVERRIDE                   SPD9N505  Subsch. ID : 370 Det. descr. : SEND A SINGLE COMMAND TO THE DRCU	SCD06505  90400001 <hex> 0 <hex> (Def)	
	ET=+ UT=+00.00.01	SEND_DRCU_COMMAND_RAW  SEND_DRCU_COMMAND  Command Parameter(s) : DRCUCOMMAND                   SPD4N505 OVERRIDE                   SPD9N505  Subsch. ID : 370 Det. descr. : SEND A SINGLE COMMAND TO THE DRCU	SCD06505  90410001 <hex> 0 <hex> (Def)	
	ET=+ UT=+00.00.01	SEND_DRCU_COMMAND_RAW  SEND_DRCU_COMMAND  Command Parameter(s) : DRCUCOMMAND                   SPD4N505 OVERRIDE                   SPD9N505  Subsch. ID : 370 Det. descr. : SEND A SINGLE COMMAND TO THE DRCU	SCD06505  905f2e62 <hex> 0 <hex> (Def)	
	ET=+ UT=+00.00.01	SEND_DRCU_COMMAND_RAW  SEND_DRCU_COMMAND  Command Parameter(s) : DRCUCOMMAND                   SPD4N505 OVERRIDE                   SPD9N505  Subsch. ID : 370 Det. descr. : SEND A SINGLE COMMAND TO THE DRCU	SCD06505  905e1e94 <hex> 0 <hex> (Def)	
	ET=+ UT=+00.00.01	SEND_DRCU_COMMAND_RAW  SEND_DRCU_COMMAND  Command Parameter(s) : DRCUCOMMAND                   SPD4N505 OVERRIDE                   SPD9N505  Subsch. ID : 370 Det. descr. : SEND A SINGLE COMMAND TO THE DRCU	SCD06505  90542ea5 <hex> 0 <hex> (Def)	
	ET=+ UT=+00.00.01	SEND_DRCU_COMMAND_RAW  SEND_DRCU_COMMAND  Command Parameter(s) : DRCUCOMMAND                   SPD4N505 OVERRIDE                   SPD9N505  Subsch. ID : 370 Det. descr. : SEND A SINGLE COMMAND TO THE DRCU	SCD06505  90557df1 <hex> 0 <hex> (Def)	

SpireEngSmecScan  
 File: H\_CRP\_SPI\_SCAN.xls  
 Author: R. Biggins



Step No.	Time	Activity/Remarks	TC/TLM	Display/ Branch
	ET=+ UT=+00.00.15	SEND_DRCU_COMMAND_RAW  SEND_DRCU_COMMAND  Command Parameter(s) : DRCUCOMMAND                   SPD4N505 OVERRIDE                   SPD9N505  Subsch. ID : 370 Det. descr. : SEND A SINGLE COMMAND TO THE DRCU	SCD06505  9051012c <hex> 0 <hex> (Def)	
	ET=+ UT=+00.00.01	SEND_DRCU_COMMAND_RAW  SEND_DRCU_COMMAND  Command Parameter(s) : DRCUCOMMAND                   SPD4N505 OVERRIDE                   SPD9N505  Subsch. ID : 370 Det. descr. : SEND A SINGLE COMMAND TO THE DRCU	SCD06505  904e07d0 <hex> 0 <hex> (Def)	
	ET=+ UT=+00.00.01	SEND_DRCU_COMMAND_RAW  SEND_DRCU_COMMAND  Command Parameter(s) : DRCUCOMMAND                   SPD4N505 OVERRIDE                   SPD9N505  Subsch. ID : 370 Det. descr. : SEND A SINGLE COMMAND TO THE DRCU	SCD06505  904c07d0 <hex> 0 <hex> (Def)	
	ET=+ UT=+00.00.01	SEND_DRCU_COMMAND_RAW  SEND_DRCU_COMMAND  Command Parameter(s) : DRCUCOMMAND                   SPD4N505 OVERRIDE                   SPD9N505  Subsch. ID : 370 Det. descr. : SEND A SINGLE COMMAND TO THE DRCU	SCD06505  91d4006b <hex> 0 <hex> (Def)	
	ET=+ UT=+00.00.01	SEND_DRCU_COMMAND_RAW  SEND_DRCU_COMMAND  Command Parameter(s) : DRCUCOMMAND                   SPD4N505 OVERRIDE                   SPD9N505  Subsch. ID : 370 Det. descr. : SEND A SINGLE COMMAND TO THE DRCU	SCD06505  91d90059 <hex> 0 <hex> (Def)	
	ET=+ UT=+00.00.01	SEND_DRCU_COMMAND_RAW  SEND_DRCU_COMMAND  Command Parameter(s) : DRCUCOMMAND                   SPD4N505 OVERRIDE                   SPD9N505  Subsch. ID : 370 Det. descr. : SEND A SINGLE COMMAND TO THE DRCU	SCD06505  91da006f <hex> 0 <hex> (Def)	

SpireEngSmecScan  
 File: H\_CRP\_SPI\_SCAN.xls  
 Author: R. Biggins



Step No.	Time	Activity/Remarks	TC/TLM	Display/ Branch
	ET=+ UT=+00.00.01	SEND_DRCU_COMMAND_RAW  SEND_DRCU_COMMAND  Command Parameter(s) : DRCUCOMMAND                   SPD4N505 OVERRIDE                   SPD9N505  Subsch. ID : 370 Det. descr. : SEND A SINGLE COMMAND TO THE DRCU	SCD06505  91db0057 <hex> 0 <hex> (Def)	
	ET=+ UT=+00.00.01	SEND_DRCU_COMMAND_RAW  SEND_DRCU_COMMAND  Command Parameter(s) : DRCUCOMMAND                   SPD4N505 OVERRIDE                   SPD9N505  Subsch. ID : 370 Det. descr. : SEND A SINGLE COMMAND TO THE DRCU	SCD06505  91dc006e <hex> 0 <hex> (Def)	
	ET=+ UT=+00.00.01	SEND_DRCU_COMMAND_RAW  SEND_DRCU_COMMAND  Command Parameter(s) : DRCUCOMMAND                   SPD4N505 OVERRIDE                   SPD9N505  Subsch. ID : 370 Det. descr. : SEND A SINGLE COMMAND TO THE DRCU	SCD06505  91dd0069 <hex> 0 <hex> (Def)	
	ET=+ UT=+00.00.01	SEND_DRCU_COMMAND_RAW  SEND_DRCU_COMMAND  Command Parameter(s) : DRCUCOMMAND                   SPD4N505 OVERRIDE                   SPD9N505  Subsch. ID : 370 Det. descr. : SEND A SINGLE COMMAND TO THE DRCU	SCD06505  91de0065 <hex> 0 <hex> (Def)	
	ET=+ UT=+00.00.01	SEND_DRCU_COMMAND_RAW  SEND_DRCU_COMMAND  Command Parameter(s) : DRCUCOMMAND                   SPD4N505 OVERRIDE                   SPD9N505  Subsch. ID : 370 Det. descr. : SEND A SINGLE COMMAND TO THE DRCU	SCD06505  91c20000 <hex> 0 <hex> (Def)	
	ET=+ UT=+00.00.01	SEND_DRCU_COMMAND_RAW  SEND_DRCU_COMMAND  Command Parameter(s) : DRCUCOMMAND                   SPD4N505 OVERRIDE                   SPD9N505  Subsch. ID : 370 Det. descr. : SEND A SINGLE COMMAND TO THE DRCU	SCD06505  91c00000 <hex> 0 <hex> (Def)	

SpireEngSmecScan  
 File: H\_CRP\_SPI\_SCAN.xls  
 Author: R. Biggins



Step No.	Time	Activity/Remarks	TC/TLM	Display/ Branch
	ET=+ UT=+00.00.01	SEND_DRCU_COMMAND_RAW  SEND_DRCU_COMMAND  Command Parameter(s) : DRCUCOMMAND                   SPD4N505 OVERRIDE                   SPD9N505  Subsch. ID : 370 Det. descr. : SEND A SINGLE COMMAND TO THE DRCU	SCD06505  91c40013 <hex> 0 <hex> (Def)	
	ET=+ UT=+00.00.01	SEND_DRCU_COMMAND_RAW  SEND_DRCU_COMMAND  Command Parameter(s) : DRCUCOMMAND                   SPD4N505 OVERRIDE                   SPD9N505  Subsch. ID : 370 Det. descr. : SEND A SINGLE COMMAND TO THE DRCU	SCD06505  91c3ffff <hex> 0 <hex> (Def)	
	ET=+ UT=+00.00.01	SEND_DRCU_COMMAND_RAW  SEND_DRCU_COMMAND  Command Parameter(s) : DRCUCOMMAND                   SPD4N505 OVERRIDE                   SPD9N505  Subsch. ID : 370 Det. descr. : SEND A SINGLE COMMAND TO THE DRCU	SCD06505  91c10001 <hex> 0 <hex> (Def)	
	ET=+ UT=+00.00.10	SEND_DRCU_COMMAND_RAW  SEND_DRCU_COMMAND  Command Parameter(s) : DRCUCOMMAND                   SPD4N505 OVERRIDE                   SPD9N505  Subsch. ID : 370 Det. descr. : SEND A SINGLE COMMAND TO THE DRCU	SCD06505  90471482 <hex> 0 <hex> (Def)	
	ET=+ UT=+00.00.01	SEND_DRCU_COMMAND_RAW  SEND_DRCU_COMMAND  Command Parameter(s) : DRCUCOMMAND                   SPD4N505 OVERRIDE                   SPD9N505  Subsch. ID : 370 Det. descr. : SEND A SINGLE COMMAND TO THE DRCU	SCD06505  90561482 <hex> 0 <hex> (Def)	
	ET=+ UT=+00.00.01	SEND_DRCU_COMMAND_RAW  SEND_DRCU_COMMAND  Command Parameter(s) : DRCUCOMMAND                   SPD4N505 OVERRIDE                   SPD9N505  Subsch. ID : 370 Det. descr. : SEND A SINGLE COMMAND TO THE DRCU	SCD06505  90588000 <hex> 0 <hex> (Def)	

SpireEngSmecScan  
 File: H\_CRP\_SPI\_SCAN.xls  
 Author: R. Biggins



Step No.	Time	Activity/Remarks	TC/TLM	Display/ Branch
	ET=+ UT=+00.00.01	SEND_DRCU_COMMAND_RAW  SEND_DRCU_COMMAND  Command Parameter(s) : DRCUCOMMAND                   SPD4N505 OVERRIDE                   SPD9N505  Subsch. ID : 370 Det. descr. : SEND A SINGLE COMMAND TO THE DRCU	SCD06505  905a8000 <hex> 0 <hex> (Def)	
	ET=+ UT=+00.00.01	SEND_DRCU_COMMAND_RAW  SEND_DRCU_COMMAND  Command Parameter(s) : DRCUCOMMAND                   SPD4N505 OVERRIDE                   SPD9N505  Subsch. ID : 370 Det. descr. : SEND A SINGLE COMMAND TO THE DRCU	SCD06505  90490000 <hex> 0 <hex> (Def)	
	ET=+ UT=+00.00.01	SEND_DRCU_COMMAND_RAW  SEND_DRCU_COMMAND  Command Parameter(s) : DRCUCOMMAND                   SPD4N505 OVERRIDE                   SPD9N505  Subsch. ID : 370 Det. descr. : SEND A SINGLE COMMAND TO THE DRCU	SCD06505  90450bb8 <hex> 0 <hex> (Def)	
	ET=+ UT=+00.00.01	SEND_DRCU_COMMAND_RAW  SEND_DRCU_COMMAND  Command Parameter(s) : DRCUCOMMAND                   SPD4N505 OVERRIDE                   SPD9N505  Subsch. ID : 370 Det. descr. : SEND A SINGLE COMMAND TO THE DRCU	SCD06505  90490001 <hex> 0 <hex> (Def)	
	ET=+ UT=+00.00.24	SEND_DRCU_COMMAND_RAW  SEND_DRCU_COMMAND  Command Parameter(s) : DRCUCOMMAND                   SPD4N505 OVERRIDE                   SPD9N505  Subsch. ID : 370 Det. descr. : SEND A SINGLE COMMAND TO THE DRCU	SCD06505  90490000 <hex> 0 <hex> (Def)	
	ET=+ UT=+00.00.01	SEND_DRCU_COMMAND_RAW  SEND_DRCU_COMMAND  Command Parameter(s) : DRCUCOMMAND                   SPD4N505 OVERRIDE                   SPD9N505  Subsch. ID : 370 Det. descr. : SEND A SINGLE COMMAND TO THE DRCU	SCD06505  90460bb8 <hex> 0 <hex> (Def)	

SpireEngSmecScan  
 File: H\_CRP\_SPI\_SCAN.xls  
 Author: R. Biggins



Step No.	Time	Activity/Remarks	TC/TLM	Display/ Branch
	ET=+ UT=+00.00.01	SEND_DRCU_COMMAND_RAW  SEND_DRCU_COMMAND  Command Parameter(s) : DRCUCOMMAND                   SPD4N505 OVERRIDE                   SPD9N505  Subsch. ID : 370 Det. descr. : SEND A SINGLE COMMAND TO THE DRCU	SCD06505  90450fa0 <hex> 0 <hex> (Def)	
	ET=+ UT=+00.00.01	SEND_DRCU_COMMAND_RAW  SEND_DRCU_COMMAND  Command Parameter(s) : DRCUCOMMAND                   SPD4N505 OVERRIDE                   SPD9N505  Subsch. ID : 370 Det. descr. : SEND A SINGLE COMMAND TO THE DRCU	SCD06505  90480004 <hex> 0 <hex> (Def)	
	ET=+ UT=+00.00.01	RUN_VM1  RUN_VM1  Command Parameter(s) : TABLEID_RUNVM1                SPV4N500 INDEX_RUNVM1                   SPV5N500 N_RUNVM1                        SPV6N500 DATA_RUNVM1                    SPV7N500 DATA_RUNVM1                    SPV7N500  Subsch. ID : 370 Det. descr. : EXECUTE COMMAND LIST HELD IN A TABLE BY S/W DRIVEN VM1	SCV02500  4b <hex> 0 <hex> 2 <dec> 80 <dec> 100000 <dec>	
	ET=+ UT=+00.00.10	SEND_DRCU_COMMAND_RAW  SEND_DRCU_COMMAND  Command Parameter(s) : DRCUCOMMAND                   SPD4N505 OVERRIDE                   SPD9N505  Subsch. ID : 370 Det. descr. : SEND A SINGLE COMMAND TO THE DRCU	SCD06505  904d0000 <hex> 0 <hex> (Def)	
	ET=+ UT=+00.00.02	SEND_DRCU_COMMAND_RAW  SEND_DRCU_COMMAND  Command Parameter(s) : DRCUCOMMAND                   SPD4N505 OVERRIDE                   SPD9N505  Subsch. ID : 370 Det. descr. : SEND A SINGLE COMMAND TO THE DRCU	SCD06505  90490000 <hex> 0 <hex> (Def)	

SpireEngSmecScan  
 File: H\_CRP\_SPI\_SCAN.xls  
 Author: R. Biggins



Step No.	Time	Activity/Remarks	TC/TLM	Display/ Branch
	ET=+ UT=+00.00.01	SEND_DRCU_COMMAND_RAW  SEND_DRCU_COMMAND  Command Parameter(s) : DRCUCOMMAND                   SPD4N505 OVERRIDE                   SPD9N505  Subsch. ID : 370 Det. descr. : SEND A SINGLE COMMAND TO THE DRCU	SCD06505  90450000 <hex> 0 <hex> (Def)	
	ET=+ UT=+00.00.01	SEND_DRCU_COMMAND_RAW  SEND_DRCU_COMMAND  Command Parameter(s) : DRCUCOMMAND                   SPD4N505 OVERRIDE                   SPD9N505  Subsch. ID : 370 Det. descr. : SEND A SINGLE COMMAND TO THE DRCU	SCD06505  90490001 <hex> 0 <hex> (Def)	
	ET=+ UT=+00.00.10	SEND_DRCU_COMMAND_RAW  SEND_DRCU_COMMAND  Command Parameter(s) : DRCUCOMMAND                   SPD4N505 OVERRIDE                   SPD9N505  Subsch. ID : 370 Det. descr. : SEND A SINGLE COMMAND TO THE DRCU	SCD06505  90490004 <hex> 0 <hex> (Def)	
	ET=+ UT=+00.00.01	SEND_DRCU_COMMAND_RAW  SEND_DRCU_COMMAND  Command Parameter(s) : DRCUCOMMAND                   SPD4N505 OVERRIDE                   SPD9N505  Subsch. ID : 370 Det. descr. : SEND A SINGLE COMMAND TO THE DRCU	SCD06505  90490001 <hex> 0 <hex> (Def)	
	ET=+ UT=+00.00.01	SEND_DRCU_COMMAND_RAW  SEND_DRCU_COMMAND  Command Parameter(s) : DRCUCOMMAND                   SPD4N505 OVERRIDE                   SPD9N505  Subsch. ID : 370 Det. descr. : SEND A SINGLE COMMAND TO THE DRCU	SCD06505  904b07d0 <hex> 0 <hex> (Def)	
	ET=+ UT=+00.00.01	SEND_DRCU_COMMAND_RAW  SEND_DRCU_COMMAND  Command Parameter(s) : DRCUCOMMAND                   SPD4N505 OVERRIDE                   SPD9N505  Subsch. ID : 370 Det. descr. : SEND A SINGLE COMMAND TO THE DRCU	SCD06505  904a07d0 <hex> 0 <hex> (Def)	



SpireEngSmecScan  
 File: H\_CRP\_SPI\_SCAN.xls  
 Author: R. Biggins



Step No.	Time	Activity/Remarks	TC/TLM	Display/ Branch
	ET=+ UT=+00.00.01	SEND_DRCU_COMMAND_RAW  SEND_DRCU_COMMAND  Command Parameter(s) : DRCUCOMMAND                   SPD4N505 OVERRIDE           SPD9N505  Subsch. ID : 370 Det. descr. : SEND A SINGLE COMMAND TO THE DRCU	SCD06505  90440001 <hex> 0 <hex> (Def)	
	ET=+ UT=+00.00.02	SEND_DRCU_COMMAND_RAW  SEND_DRCU_COMMAND  Command Parameter(s) : DRCUCOMMAND                   SPD4N505 OVERRIDE           SPD9N505  Subsch. ID : 370 Det. descr. : SEND A SINGLE COMMAND TO THE DRCU	SCD06505  90450064 <hex> 0 <hex> (Def)	
	ET=+ UT=+00.00.04	RUN_VM1  RUN_VM1  Command Parameter(s) : TABLEID_RUNVM1                SPV4N500 INDEX_RUNVM1                   SPV5N500 N_RUNVM1                        SPV6N500 DATA_RUNVM1                    SPV7N500 DATA_RUNVM1                    SPV7N500 DATA_RUNVM1                    SPV7N500  Subsch. ID : 370 Det. descr. : EXECUTE COMMAND LIST HELD IN A TABLE BY S/W DRIVEN VM1	SCV02500  4b <hex> 1 <hex> 3 <dec> 100 <dec> 20 <dec> 1000 <dec>	
	ET=+ UT=+00.00.10	SEND_DRCU_COMMAND_RAW  SEND_DRCU_COMMAND  Command Parameter(s) : DRCUCOMMAND                   SPD4N505 OVERRIDE           SPD9N505  Subsch. ID : 370 Det. descr. : SEND A SINGLE COMMAND TO THE DRCU	SCD06505  90490000 <hex> 0 <hex> (Def)	
	ET=+ UT=+00.00.01	SEND_DRCU_COMMAND_RAW  SEND_DRCU_COMMAND  Command Parameter(s) : DRCUCOMMAND                   SPD4N505 OVERRIDE           SPD9N505  Subsch. ID : 370 Det. descr. : SEND A SINGLE COMMAND TO THE DRCU	SCD06505  90471482 <hex> 0 <hex> (Def)	

SpireEngSmecScan  
 File: H\_CRP\_SPI\_SCAN.xls  
 Author: R. Biggins



Step No.	Time	Activity/Remarks	TC/TLM	Display/ Branch
	ET=+ UT=+00.00.01	SEND_DRCU_COMMAND_RAW  SEND_DRCU_COMMAND  Command Parameter(s) : DRCUCOMMAND                   SPD4N505 OVERRIDE                   SPD9N505  Subsch. ID : 370 Det. descr. : SEND A SINGLE COMMAND TO THE DRCU	SCD06505  90561482 <hex> 0 <hex> (Def)	
	ET=+ UT=+00.00.01	SEND_DRCU_COMMAND_RAW  SEND_DRCU_COMMAND  Command Parameter(s) : DRCUCOMMAND                   SPD4N505 OVERRIDE                   SPD9N505  Subsch. ID : 370 Det. descr. : SEND A SINGLE COMMAND TO THE DRCU	SCD06505  9045189c <hex> 0 <hex> (Def)	
	ET=+ UT=+00.00.01	SEND_DRCU_COMMAND_RAW  SEND_DRCU_COMMAND  Command Parameter(s) : DRCUCOMMAND                   SPD4N505 OVERRIDE                   SPD9N505  Subsch. ID : 370 Det. descr. : SEND A SINGLE COMMAND TO THE DRCU	SCD06505  90490001 <hex> 0 <hex> (Def)	
	ET=+ UT=+00.00.14	SEND_DRCU_COMMAND_RAW  SEND_DRCU_COMMAND  Command Parameter(s) : DRCUCOMMAND                   SPD4N505 OVERRIDE                   SPD9N505  Subsch. ID : 370 Det. descr. : SEND A SINGLE COMMAND TO THE DRCU	SCD06505  90490000 <hex> 0 <hex> (Def)	
	ET=+ UT=+00.00.04	SEND_DRCU_COMMAND_RAW  SEND_DRCU_COMMAND  Command Parameter(s) : DRCUCOMMAND                   SPD4N505 OVERRIDE                   SPD9N505  Subsch. ID : 370 Det. descr. : SEND A SINGLE COMMAND TO THE DRCU	SCD06505  91c10000 <hex> 0 <hex> (Def)	
	ET=+ UT=+00.00.02	FLUSH_FIFO  FLUSH_FIFO  Command Parameter(s) : FIFOFLAGS                   SPD0N505  Subsch. ID : 370 Det. descr. : FORCE DPU TO READ SCIENCE DATA FROM FIFOS AND FLUSH CONTENTS	SCD01505  2000 <hex>	

SpireEngSmecScan  
 File: H\_CRP\_SPI\_SCAN.xls  
 Author: R. Biggins



Step No.	Time	Activity/Remarks	TC/TLM	Display/ Branch
	ET=+ UT=+00.00.01	SEND_DRCU_COMMAND_RAW  SEND_DRCU_COMMAND  Command Parameter(s) : DRCUCOMMAND                   SPD4N505 OVERRIDE                   SPD9N505  Subsch. ID : 370 Det. descr. : SEND A SINGLE COMMAND TO THE DRCU	SCD06505  91c40000 <hex> 0 <hex> (Def)	
	ET=+ UT=+00.00.01	UPDATE_TABLE_RAW  UPDATE_TABLE  Command Parameter(s) : TABLEID_UPDTAB                   SPB5N500 INDEX_UPDTAB                    SPB6N500 N_UPDTAB                    SPB7N500 DATA_UPDTAB                SPB8N500  Subsch. ID : 370 Det. descr. : UPDATE CONTENTS OF A TABLE	SCB02500  7 <hex> 6 <hex> 1 <dec> (Def) 3 <hex>	
	ET=+ UT=+00.00.01	SEND_DRCU_COMMAND_RAW  SEND_DRCU_COMMAND  Command Parameter(s) : DRCUCOMMAND                   SPD4N505 OVERRIDE                   SPD9N505  Subsch. ID : 370 Det. descr. : SEND A SINGLE COMMAND TO THE DRCU	SCD06505  90490000 <hex> 0 <hex> (Def)	
	ET=+ UT=+00.00.01	SEND_DRCU_COMMAND_RAW  SEND_DRCU_COMMAND  Command Parameter(s) : DRCUCOMMAND                   SPD4N505 OVERRIDE                   SPD9N505  Subsch. ID : 370 Det. descr. : SEND A SINGLE COMMAND TO THE DRCU	SCD06505  9046189c <hex> 0 <hex> (Def)	
	ET=+ UT=+00.00.01	SEND_DRCU_COMMAND_RAW  SEND_DRCU_COMMAND  Command Parameter(s) : DRCUCOMMAND                   SPD4N505 OVERRIDE                   SPD9N505  Subsch. ID : 370 Det. descr. : SEND A SINGLE COMMAND TO THE DRCU	SCD06505  90459ab0 <hex> 0 <hex> (Def)	
	ET=+ UT=+00.00.01	SEND_DRCU_COMMAND_RAW  SEND_DRCU_COMMAND  Command Parameter(s) : DRCUCOMMAND                   SPD4N505 OVERRIDE                   SPD9N505  Subsch. ID : 370 Det. descr. : SEND A SINGLE COMMAND TO THE DRCU	SCD06505  90471482 <hex> 0 <hex> (Def)	

SpireEngSmecScan  
 File: H\_CRP\_SPI\_SCAN.xls  
 Author: R. Biggins



Step No.	Time	Activity/Remarks	TC/TLM	Display/ Branch
	ET=+ UT=+00.00.01	SEND_DRCU_COMMAND_RAW  SEND_DRCU_COMMAND  Command Parameter(s) : DRCUCOMMAND                   SPD4N505 OVERRIDE                   SPD9N505  Subsch. ID : 370 Det. descr. : SEND A SINGLE COMMAND TO THE DRCU	SCD06505  90561482 <hex> 0 <hex> (Def)	
	ET=+ UT=+00.00.01	SEND_DRCU_COMMAND_RAW  SEND_DRCU_COMMAND  Command Parameter(s) : DRCUCOMMAND                   SPD4N505 OVERRIDE                   SPD9N505  Subsch. ID : 370 Det. descr. : SEND A SINGLE COMMAND TO THE DRCU	SCD06505  90480002 <hex> 0 <hex> (Def)	
	ET=+ UT=+00.00.01	SEND_DRCU_COMMAND_RAW  SEND_DRCU_COMMAND  Command Parameter(s) : DRCUCOMMAND                   SPD4N505 OVERRIDE                   SPD9N505  Subsch. ID : 370 Det. descr. : SEND A SINGLE COMMAND TO THE DRCU	SCD06505  91c3ffff <hex> 0 <hex> (Def)	
	ET=+ UT=+00.00.01	SEND_DRCU_COMMAND_RAW  SEND_DRCU_COMMAND  Command Parameter(s) : DRCUCOMMAND                   SPD4N505 OVERRIDE                   SPD9N505  Subsch. ID : 370 Det. descr. : SEND A SINGLE COMMAND TO THE DRCU	SCD06505  91c0000a <hex> 0 <hex> (Def)	
	ET=+ UT=+00.00.01	SEND_DRCU_COMMAND_RAW  SEND_DRCU_COMMAND  Command Parameter(s) : DRCUCOMMAND                   SPD4N505 OVERRIDE                   SPD9N505  Subsch. ID : 370 Det. descr. : SEND A SINGLE COMMAND TO THE DRCU	SCD06505  91c10001 <hex> 0 <hex> (Def)	
	ET=+ UT=+00.00.01	SEND_DRCU_COMMAND_RAW  SEND_DRCU_COMMAND  Command Parameter(s) : DRCUCOMMAND                   SPD4N505 OVERRIDE                   SPD9N505  Subsch. ID : 370 Det. descr. : SEND A SINGLE COMMAND TO THE DRCU	SCD06505  90490002 <hex> 0 <hex> (Def)	

SpireEngSmecScan  
 File: H\_CRP\_SPI\_SCAN.xls  
 Author: R. Biggins



Step No.	Time	Activity/Remarks	TC/TLM	Display/ Branch
	ET=+ UT=+00.02.16	SEND_DRCU_COMMAND_RAW  SEND_DRCU_COMMAND  Command Parameter(s) : DRCUCOMMAND                   SPD4N505 OVERRIDE                   SPD9N505  Subsch. ID : 370 Det. descr. : SEND A SINGLE COMMAND TO THE DRCU	SCD06505  91c10000 <hex> 0 <hex> (Def)	
	ET=+ UT=+00.00.01	FLUSH_FIFO  FLUSH_FIFO  Command Parameter(s) : FIFOFLAGS                   SPD0N505  Subsch. ID : 370 Det. descr. : FORCE DPU TO READ SCIENCE DATA FROM FIFOS AND FLUSH CONTENTS	SCD01505  2000 <hex>	
	ET=+ UT=+00.00.01	SEND_DRCU_COMMAND_RAW  SEND_DRCU_COMMAND  Command Parameter(s) : DRCUCOMMAND                   SPD4N505 OVERRIDE                   SPD9N505  Subsch. ID : 370 Det. descr. : SEND A SINGLE COMMAND TO THE DRCU	SCD06505  90490000 <hex> 0 <hex> (Def)	
	ET=+ UT=+00.00.01	UPDATE_TABLE_RAW  UPDATE_TABLE  Command Parameter(s) : TABLEID_UPDTAB                SPB5N500 INDEX_UPDTAB                   SPB6N500 N_UPDTAB                        SPB7N500 DATA_UPDTAB                    SPB8N500  Subsch. ID : 370 Det. descr. : UPDATE CONTENTS OF A TABLE	SCB02500  7 <hex> 6 <hex> 1 <dec> (Def) 0 <hex>	
	ET=+ UT=+00.00.01	SEND_DRCU_COMMAND_RAW  SEND_DRCU_COMMAND  Command Parameter(s) : DRCUCOMMAND                   SPD4N505 OVERRIDE                   SPD9N505  Subsch. ID : 370 Det. descr. : SEND A SINGLE COMMAND TO THE DRCU	SCD06505  90490000 <hex> 0 <hex> (Def)	
	ET=+ UT=+00.00.01	SEND_DRCU_COMMAND_RAW  SEND_DRCU_COMMAND  Command Parameter(s) : DRCUCOMMAND                   SPD4N505 OVERRIDE                   SPD9N505  Subsch. ID : 370 Det. descr. : SEND A SINGLE COMMAND TO THE DRCU	SCD06505  90450dac <hex> 0 <hex> (Def)	

SpireEngSmecScan  
 File: H\_CRP\_SPI\_SCAN.xls  
 Author: R. Biggins



Step No.	Time	Activity/Remarks	TC/TLM	Display/ Branch
	ET=+ UT=+00.00.01	SEND_DRCU_COMMAND_RAW  SEND_DRCU_COMMAND  Command Parameter(s) : DRCUCOMMAND                   SPD4N505 OVERRIDE                   SPD9N505  Subsch. ID : 370 Det. descr. : SEND A SINGLE COMMAND TO THE DRCU	SCD06505  90460000 <hex> 0 <hex> (Def)	
	ET=+ UT=+00.00.01	SEND_DRCU_COMMAND_RAW  SEND_DRCU_COMMAND  Command Parameter(s) : DRCUCOMMAND                   SPD4N505 OVERRIDE                   SPD9N505  Subsch. ID : 370 Det. descr. : SEND A SINGLE COMMAND TO THE DRCU	SCD06505  90471482 <hex> 0 <hex> (Def)	
	ET=+ UT=+00.00.01	SEND_DRCU_COMMAND_RAW  SEND_DRCU_COMMAND  Command Parameter(s) : DRCUCOMMAND                   SPD4N505 OVERRIDE                   SPD9N505  Subsch. ID : 370 Det. descr. : SEND A SINGLE COMMAND TO THE DRCU	SCD06505  90561482 <hex> 0 <hex> (Def)	
	ET=+ UT=+00.00.01	SEND_DRCU_COMMAND_RAW  SEND_DRCU_COMMAND  Command Parameter(s) : DRCUCOMMAND                   SPD4N505 OVERRIDE                   SPD9N505  Subsch. ID : 370 Det. descr. : SEND A SINGLE COMMAND TO THE DRCU	SCD06505  90440006 <hex> 0 <hex> (Def)	
	ET=+ UT=+00.00.04	SEND_DRCU_COMMAND_RAW  SEND_DRCU_COMMAND  Command Parameter(s) : DRCUCOMMAND                   SPD4N505 OVERRIDE                   SPD9N505  Subsch. ID : 370 Det. descr. : SEND A SINGLE COMMAND TO THE DRCU	SCD06505  90490001 <hex> 0 <hex> (Def)	
	ET=+ UT=+00.00.20	SEND_DRCU_COMMAND_RAW  SEND_DRCU_COMMAND  Command Parameter(s) : DRCUCOMMAND                   SPD4N505 OVERRIDE                   SPD9N505  Subsch. ID : 370 Det. descr. : SEND A SINGLE COMMAND TO THE DRCU	SCD06505  90490000 <hex> 0 <hex> (Def)	

SpireEngSmecScan  
 File: H\_CRP\_SPI\_SCAN.xls  
 Author: R. Biggins



Step No.	Time	Activity/Remarks	TC/TLM	Display/ Branch
	ET=+ UT=+00.00.01	SEND_DRCU_COMMAND_RAW  SEND_DRCU_COMMAND  Command Parameter(s) : DRCUCOMMAND                   SPD4N505 OVERRIDE                   SPD9N505  Subsch. ID : 370 Det. descr. : SEND A SINGLE COMMAND TO THE DRCU	SCD06505  90400000 <hex> 0 <hex> (Def)	
	ET=+ UT=+00.00.01	SEND_DRCU_COMMAND_RAW  SEND_DRCU_COMMAND  Command Parameter(s) : DRCUCOMMAND                   SPD4N505 OVERRIDE                   SPD9N505  Subsch. ID : 370 Det. descr. : SEND A SINGLE COMMAND TO THE DRCU	SCD06505  90410000 <hex> 0 <hex> (Def)	
	ET=+ UT=+00.00.01	SEND_DRCU_COMMAND_RAW  SEND_DRCU_COMMAND  Command Parameter(s) : DRCUCOMMAND                   SPD4N505 OVERRIDE                   SPD9N505  Subsch. ID : 370 Det. descr. : SEND A SINGLE COMMAND TO THE DRCU	SCD06505  904a0000 <hex> 0 <hex> (Def)	
	ET=+ UT=+00.00.01	SEND_DRCU_COMMAND_RAW  SEND_DRCU_COMMAND  Command Parameter(s) : DRCUCOMMAND                   SPD4N505 OVERRIDE                   SPD9N505  Subsch. ID : 370 Det. descr. : SEND A SINGLE COMMAND TO THE DRCU	SCD06505  904d0000 <hex> 0 <hex> (Def)	
	ET=+ UT=+00.00.01	SEND_DRCU_COMMAND_RAW  SEND_DRCU_COMMAND  Command Parameter(s) : DRCUCOMMAND                   SPD4N505 OVERRIDE                   SPD9N505  Subsch. ID : 370 Det. descr. : SEND A SINGLE COMMAND TO THE DRCU	SCD06505  91c00000 <hex> 0 <hex> (Def)	
	ET=+ UT=+00.00.01	SET_BBID  SET_BBID  Command Parameter(s) : BUILDING_BLOCK_ID               SP01N500  Subsch. ID : 370 Det. descr. : SET BUILDING BLOCK IDENTIFIER	SC001500  86400002 <hex>	

SpireEngSmecScan  
 File: H\_CRP\_SPI\_SCAN.xls  
 Author: R. Biggins



Step No.	Time	Activity/Remarks	TC/TLM	Display/ Branch
	ET=+ UT=+00.00.01	DEFINE_NEW_HK_REPORT DEFINE_NEW_HK_REPORT Command Parameter(s) : HKPCKTID_DEFINENEWHK            SPR0N500 HKSID_DEFINENEWHK             SPR1N500 HKINTERVAL_DEFINENEWHK        SPR2N500 HKREPEAT_DEFINENEWHK         SPR3N500 TABLEID_DEFINENEWHK          SPR4N500 Subsch. ID : 370 Det. descr. : DEFINE NEW HOUSEKEEPING PARAMETER REPORT	SCR00500  301 <hex> 301 <hex> fa0 <hex> 1 <hex> 1 <hex>	
6		Set default end conditions		Next Step: END
		Note that a <b>TM(5,1)</b> packet [New_Step_Report] is generated after each of the following SET_OBS_STEP telecommands		
	ET=+ UT=+00.00.01	SET_OBS_STEP SET_OBS_STEP Command Parameter(s) : OBSERVATION_STEP                SP03N500 TC Control Flags : GBM IL DSE --Y -- --- Subsch. ID : 370 Det. descr. : SET OBSERVATION STEP	SC003500  0 <hex>	
	ET=+ UT=+00.00.01	SET_BBID SET_BBID Command Parameter(s) : BUILDING_BLOCK_ID               SP01N500 Subsch. ID : 370 Det. descr. : SET BUILDING BLOCK IDENTIFIER	SC001500  80030001 <hex>	
		Verify Telemetry BBFULLTYPE            SM2LN500	= EndObs	AND=ZAZ90999
	ET=+ UT=+00.00.01	SET_OBS_STEP SET_OBS_STEP Command Parameter(s) : OBSERVATION_STEP                SP03N500 TC Control Flags : GBM IL DSE --Y -- --- Subsch. ID : 370 Det. descr. : SET OBSERVATION STEP	SC003500  1 <hex>	
		Verify Telemetry OBSID                 SM10N500	= 00000000 <hex>	AND=ZAZ90999



SpireEngSmecScan  
 File: H\_CRP\_SPI\_SCAN.xls  
 Author: R. Biggins



Step No.	Time	Activity/Remarks	TC/TLM	Display/ Branch
	ET=+ UT=+00.00.01	SET_OBS_STEP  Command Parameter(s) : OBSERVATION_STEP                    SP03N500  TC Control Flags :  GBM IL DSE --Y -- ---  Subsch. ID : 370 Det. descr. : SET OBSERVATION STEP	SET_OBS_STEP  SC003500  0 <hex>	
	ET=+ UT=+00.00.01	SET_BBID  Command Parameter(s) : BUILDING_BLOCK_ID                    SP01N500  Subsch. ID : 370 Det. descr. : SET BUILDING BLOCK IDENTIFIER	SET_BBID  SC001500  80000000 <hex>	
		Verify Telemetry  BBFULLTYPE                    SM2LN500	= Null	AND=ZAZ90999
	ET=+ UT=+00.00.01	SET_OBSID_RAW  Command Parameter(s) : OBSERVATION_ID                    SP00N500  Subsch. ID : 370 Det. descr. : SET OBSERVATION IDENTIFIER	SET_OBSID  SC000500  50000000 <hex>	
<b>End of Procedure</b>				