

Lifeboat EngREDYtoSPEC_STBY
 File: H_CRP_SPI_R2SP.xls
 Author: R. Biggins



Procedure Summary

Objectives

This is a so-called 'lifeboat' procedure, to be used in a contingency as part of the recovery. This procedure puts the SPIRE into the SPEC_STBY mode. The instrument should be in the REDY mode before execution of this procedure.

Based on procedure:SpireEngREDYtoSPEC_STBY
 Generated by HSC/ICC: 26/08/2010

Summary of Constraints

Spacecraft Configuration

Start of Procedure

SPIRE mode =REDY

End of Procedure

SPIRE mode = SPEC_STBY

Reference File(s)

Input Command Sequences

Output Command Sequences

HRSR2SP

Referenced Displays

ANDs	GRDs	SLDs
SA_7_559		
SA_1_559		
ZAZ90999		
SA_6_559		

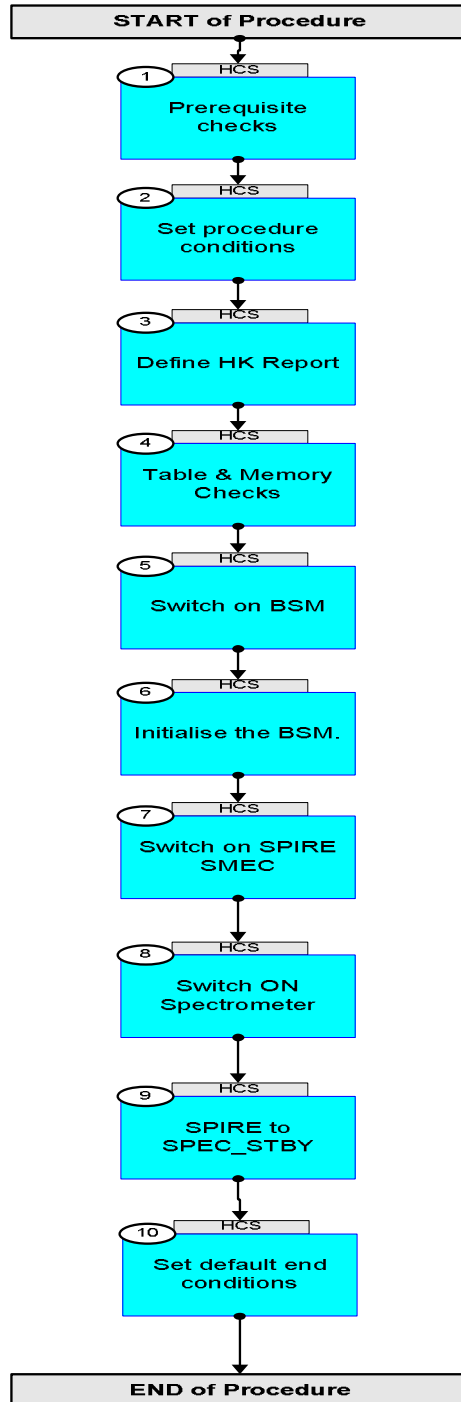
Configuration Control Information

DATE	FOP ISSUE	VERSION	MODIFICATION DESCRIPTION	AUTHOR	SPR REF
08/11/2010		1	Created	L.Lucas-hp	
05/04/2011	3.1	2	Minimum delta between TCs updated to 1 second	R. Biggins	

Lifeboat EngREDYtoSPEC_STBY
File: H_CRP_SPI_R2SP.xls
Author: R. Biggins



Procedure Flowchart Overview



Lifeboat EngREDYtoSPEC_STBY
 File: H_CRP_SPI_R2SP.xls
 Author: R. Biggins



Step No.	Time	Activity/Remarks	TC/TLM	Display/ Branch
	ET=+ UT=+00.00.01	RESET_DRCU_COUNTERS RESET_DRCU_COUNTERS TC Control Flags : Subsch. ID : 370 Det. descr. : RESET DRCU COUNTERS GBM IL DSE --Y -- ---	SCD00505	
		Verify that the TRESET parameter has the same value as the THSK parameter TRESET SM01T500	same as THSK	AND=ZAZ90999
		THSK SM00T500	any	AND=ZAZ90999
		Note that a TM(5,1) packet [New_Step_Report] is generated after each of the following SET_OBS_STEP telecommands		
	ET=+ UT=+00.00.01	SET_OBS_STEP SET_OBS_STEP Command Parameter(s) : OBSERVATION_STEP SP03N500 TC Control Flags : Subsch. ID : 370 Det. descr. : SET OBSERVATION STEP GBM IL DSE --Y -- ---	SC003500 0 <hex>	
	ET=+ UT=+00.00.01	SET_OBSID SET_OBSID Command Parameter(s) : OBSERVATION_ID SP00N500 Subsch. ID : 370 Det. descr. : SET OBSERVATION IDENTIFIER	SC000500 OBS_ID	
		Verify Telemetry OBSID SM10N500	OBS_ID	AND=ZAZ90999
	ET=+ UT=+00.00.01	SET_OBS_STEP SET_OBS_STEP Command Parameter(s) : OBSERVATION_STEP SP03N500 TC Control Flags : Subsch. ID : 370 Det. descr. : SET OBSERVATION STEP GBM IL DSE --Y -- ---	SC003500 1 <hex>	

Lifeboat EngREDYtoSPEC_STBY
 File: H_CRP_SPI_R2SP.xls
 Author: R. Biggins



Step No.	Time	Activity/Remarks	TC/TLM	Display/ Branch
	ET=+ UT=+00.00.01	SET_BBID SET_BBID Command Parameter(s) : BUILDING_BLOCK_ID SP01N500 Subsch. ID : 370 Det. descr. : SET BUILDING BLOCK IDENTIFIER	SC001500 86400001 <hex>	
3		Define HK Report		Next Step: 4
	ET=+ UT=+00.00.01	DEFINE_NEW_HK_REPORT DEFINE_NEW_HK_REPORT Command Parameter(s) : HKPCKTID_DEFINENEWHK SPR0N500 HKSID_DEFINENEWHK SPR1N500 HKINTERVAL_DEFINENEWHK SPR2N500 HKREPEAT_DEFINENEWHK SPR3N500 TABLEID_DEFINENEWHK SPR4N500 Subsch. ID : 370 Det. descr. : DEFINE NEW HOUSEKEEPING PARAMETER REPORT	SCR00500 301 <hex> 301 <hex> 3E8 <hex> 1 <hex> 1 <hex>	
4		Table & Memory Checks		Next Step: 5
		There are no TM checks for this step.		
	ET=+ UT=+00.00.02	SET_BBID SET_BBID Command Parameter(s) : BUILDING_BLOCK_ID SP01N500 Subsch. ID : 370 Det. descr. : SET BUILDING BLOCK IDENTIFIER	SC001500 b6f90001 <hex>	
	ET=+ UT=+00.00.01	REPORT_TABLE REPORT_TABLE Command Parameter(s) : TABLEID_REPTAB SPB2N500 INDEX_REPTAB SPB3N500 COUNT_REPTAB SPB4N500 Subsch. ID : 370 Det. descr. : REQUEST TM PACKETS REPORTING CONTENTS OF A TABLE	SCB01500 0 <hex> 0 <hex> 0 <hex>	

Lifeboat EngREDYtoSPEC_STBY
 File: H_CRP_SPI_R2SP.xls
 Author: R. Biggins



Step No.	Time	Activity/Remarks	TC/TLM	Display/ Branch
	ET=+ UT=+00.00.02	REPORT_TABLE REPORT_TABLE Command Parameter(s) : TABLEID_REPTAB SPB2N500 INDEX_REPTAB SPB3N500 COUNT_REPTAB SPB4N500 Subsch. ID : 370 Det. descr. : REQUEST TM PACKETS REPORTING CONTENTS OF A TABLE	SCB01500 1 <hex> 0 <hex> 0 <hex>	
	ET=+ UT=+00.00.04	REPORT_TABLE REPORT_TABLE Command Parameter(s) : TABLEID_REPTAB SPB2N500 INDEX_REPTAB SPB3N500 COUNT_REPTAB SPB4N500 Subsch. ID : 370 Det. descr. : REQUEST TM PACKETS REPORTING CONTENTS OF A TABLE	SCB01500 5 <hex> 0 <hex> 0 <hex>	
	ET=+ UT=+00.00.06	REPORT_TABLE REPORT_TABLE Command Parameter(s) : TABLEID_REPTAB SPB2N500 INDEX_REPTAB SPB3N500 COUNT_REPTAB SPB4N500 Subsch. ID : 370 Det. descr. : REQUEST TM PACKETS REPORTING CONTENTS OF A TABLE	SCB01500 a <hex> 0 <hex> 0 <hex>	
	ET=+ UT=+00.00.02	REPORT_TABLE REPORT_TABLE Command Parameter(s) : TABLEID_REPTAB SPB2N500 INDEX_REPTAB SPB3N500 COUNT_REPTAB SPB4N500 Subsch. ID : 370 Det. descr. : REQUEST TM PACKETS REPORTING CONTENTS OF A TABLE	SCB01500 32 <hex> 0 <hex> 0 <hex>	
	ET=+ UT=+00.00.02	REPORT_TABLE REPORT_TABLE Command Parameter(s) : TABLEID_REPTAB SPB2N500 INDEX_REPTAB SPB3N500 COUNT_REPTAB SPB4N500 Subsch. ID : 370 Det. descr. : REQUEST TM PACKETS REPORTING CONTENTS OF A TABLE	SCB01500 33 <hex> 0 <hex> 0 <hex>	

Lifeboat EngREDYtoSPEC_STBY
 File: H_CRP_SPI_R2SP.xls
 Author: R. Biggins



Step No.	Time	Activity/Remarks	TC/TLM	Display/ Branch
	ET=+ UT=+00.00.02	REPORT_TABLE REPORT_TABLE Command Parameter(s) : TABLEID_REPTAB SPB2N500 INDEX_REPTAB SPB3N500 COUNT_REPTAB SPB4N500 Subsch. ID : 370 Det. descr. : REQUEST TM PACKETS REPORTING CONTENTS OF A TABLE	SCB01500 34 <hex> 0 <hex> 0 <hex>	
	ET=+ UT=+00.00.02	REPORT_TABLE REPORT_TABLE Command Parameter(s) : TABLEID_REPTAB SPB2N500 INDEX_REPTAB SPB3N500 COUNT_REPTAB SPB4N500 Subsch. ID : 370 Det. descr. : REQUEST TM PACKETS REPORTING CONTENTS OF A TABLE	SCB01500 35 <hex> 0 <hex> 0 <hex>	
	ET=+ UT=+00.00.02	REPORT_TABLE REPORT_TABLE Command Parameter(s) : TABLEID_REPTAB SPB2N500 INDEX_REPTAB SPB3N500 COUNT_REPTAB SPB4N500 Subsch. ID : 370 Det. descr. : REQUEST TM PACKETS REPORTING CONTENTS OF A TABLE	SCB01500 36 <hex> 0 <hex> 0 <hex>	
	ET=+ UT=+00.00.02	REPORT_TABLE REPORT_TABLE Command Parameter(s) : TABLEID_REPTAB SPB2N500 INDEX_REPTAB SPB3N500 COUNT_REPTAB SPB4N500 Subsch. ID : 370 Det. descr. : REQUEST TM PACKETS REPORTING CONTENTS OF A TABLE	SCB01500 37 <hex> 0 <hex> 0 <hex>	
	ET=+ UT=+00.00.02	REPORT_TABLE REPORT_TABLE Command Parameter(s) : TABLEID_REPTAB SPB2N500 INDEX_REPTAB SPB3N500 COUNT_REPTAB SPB4N500 Subsch. ID : 370 Det. descr. : REQUEST TM PACKETS REPORTING CONTENTS OF A TABLE	SCB01500 38 <hex> 0 <hex> 0 <hex>	

Lifeboat EngREDYtoSPEC_STBY
 File: H_CRP_SPI_R2SP.xls
 Author: R. Biggins



Step No.	Time	Activity/Remarks	TC/TLM	Display/ Branch
	ET=+ UT=+00.00.02	REPORT_TABLE REPORT_TABLE Command Parameter(s) : TABLEID_REPTAB SPB2N500 INDEX_REPTAB SPB3N500 COUNT_REPTAB SPB4N500 Subsch. ID : 370 Det. descr. : REQUEST TM PACKETS REPORTING CONTENTS OF A TABLE	SCB01500 39 <hex> 0 <hex> 0 <hex>	
	ET=+ UT=+00.00.02	REPORT_TABLE REPORT_TABLE Command Parameter(s) : TABLEID_REPTAB SPB2N500 INDEX_REPTAB SPB3N500 COUNT_REPTAB SPB4N500 Subsch. ID : 370 Det. descr. : REQUEST TM PACKETS REPORTING CONTENTS OF A TABLE	SCB01500 3c <hex> 0 <hex> 0 <hex>	
	ET=+ UT=+00.00.04	REPORT_TABLE REPORT_TABLE Command Parameter(s) : TABLEID_REPTAB SPB2N500 INDEX_REPTAB SPB3N500 COUNT_REPTAB SPB4N500 Subsch. ID : 370 Det. descr. : REQUEST TM PACKETS REPORTING CONTENTS OF A TABLE	SCB01500 3d <hex> 0 <hex> 1b <hex>	
	ET=+ UT=+00.00.02	REPORT_TABLE REPORT_TABLE Command Parameter(s) : TABLEID_REPTAB SPB2N500 INDEX_REPTAB SPB3N500 COUNT_REPTAB SPB4N500 Subsch. ID : 370 Det. descr. : REQUEST TM PACKETS REPORTING CONTENTS OF A TABLE	SCB01500 46 <hex> 0 <hex> 0 <hex>	
	ET=+ UT=+00.00.04	REPORT_TABLE REPORT_TABLE Command Parameter(s) : TABLEID_REPTAB SPB2N500 INDEX_REPTAB SPB3N500 COUNT_REPTAB SPB4N500 Subsch. ID : 370 Det. descr. : REQUEST TM PACKETS REPORTING CONTENTS OF A TABLE	SCB01500 47 <hex> 0 <hex> 0 <hex>	

Lifeboat EngREDYtoSPEC_STBY
 File: H_CRP_SPI_R2SP.xls
 Author: R. Biggins



Step No.	Time	Activity/Remarks	TC/TLM	Display/ Branch
	ET=+ UT=+00.00.02	REPORT_TABLE REPORT_TABLE Command Parameter(s) : TABLEID_REPTAB SPB2N500 INDEX_REPTAB SPB3N500 COUNT_REPTAB SPB4N500 Subsch. ID : 370 Det. descr. : REQUEST TM PACKETS REPORTING CONTENTS OF A TABLE	SCB01500 48 <hex> 0 <hex> 0 <hex>	
	ET=+ UT=+00.00.04	REPORT_TABLE REPORT_TABLE Command Parameter(s) : TABLEID_REPTAB SPB2N500 INDEX_REPTAB SPB3N500 COUNT_REPTAB SPB4N500 Subsch. ID : 370 Det. descr. : REQUEST TM PACKETS REPORTING CONTENTS OF A TABLE	SCB01500 49 <hex> 0 <hex> 23 <hex>	
	ET=+ UT=+00.00.04	REPORT_TABLE REPORT_TABLE Command Parameter(s) : TABLEID_REPTAB SPB2N500 INDEX_REPTAB SPB3N500 COUNT_REPTAB SPB4N500 Subsch. ID : 370 Det. descr. : REQUEST TM PACKETS REPORTING CONTENTS OF A TABLE	SCB01500 4a <hex> 0 <hex> 0 <hex>	
	ET=+ UT=+00.00.04	REPORT_TABLE REPORT_TABLE Command Parameter(s) : TABLEID_REPTAB SPB2N500 INDEX_REPTAB SPB3N500 COUNT_REPTAB SPB4N500 Subsch. ID : 370 Det. descr. : REQUEST TM PACKETS REPORTING CONTENTS OF A TABLE	SCB01500 4b <hex> 0 <hex> 82 <hex>	
	ET=+ UT=+00.00.02	REPORT_TABLE REPORT_TABLE Command Parameter(s) : TABLEID_REPTAB SPB2N500 INDEX_REPTAB SPB3N500 COUNT_REPTAB SPB4N500 Subsch. ID : 370 Det. descr. : REQUEST TM PACKETS REPORTING CONTENTS OF A TABLE	SCB01500 4b <hex> 84 <hex> 75 <hex>	

Lifeboat EngREDYtoSPEC_STBY
 File: H_CRP_SPI_R2SP.xls
 Author: R. Biggins



Step No.	Time	Activity/Remarks	TC/TLM	Display/ Branch
	ET=+ UT=+00.00.02	REPORT_TABLE REPORT_TABLE Command Parameter(s) : TABLEID_REPTAB SPB2N500 INDEX_REPTAB SPB3N500 COUNT_REPTAB SPB4N500 Subsch. ID : 370 Det. descr. : REQUEST TM PACKETS REPORTING CONTENTS OF A TABLE	SCB01500 50 <hex> 0 <hex> 183 <hex>	
	ET=+ UT=+00.00.04	REPORT_TABLE REPORT_TABLE Command Parameter(s) : TABLEID_REPTAB SPB2N500 INDEX_REPTAB SPB3N500 COUNT_REPTAB SPB4N500 Subsch. ID : 370 Det. descr. : REQUEST TM PACKETS REPORTING CONTENTS OF A TABLE	SCB01500 51 <hex> 0 <hex> 1b3 <hex>	
	ET=+ UT=+00.00.04	REPORT_TABLE REPORT_TABLE Command Parameter(s) : TABLEID_REPTAB SPB2N500 INDEX_REPTAB SPB3N500 COUNT_REPTAB SPB4N500 Subsch. ID : 370 Det. descr. : REQUEST TM PACKETS REPORTING CONTENTS OF A TABLE	SCB01500 52 <hex> 0 <hex> 0 <hex>	
	ET=+ UT=+00.00.04	REPORT_TABLE REPORT_TABLE Command Parameter(s) : TABLEID_REPTAB SPB2N500 INDEX_REPTAB SPB3N500 COUNT_REPTAB SPB4N500 Subsch. ID : 370 Det. descr. : REQUEST TM PACKETS REPORTING CONTENTS OF A TABLE	SCB01500 53 <hex> 0 <hex> 0 <hex>	
	ET=+ UT=+00.00.04	REPORT_TABLE REPORT_TABLE Command Parameter(s) : TABLEID_REPTAB SPB2N500 INDEX_REPTAB SPB3N500 COUNT_REPTAB SPB4N500 Subsch. ID : 370 Det. descr. : REQUEST TM PACKETS REPORTING CONTENTS OF A TABLE	SCB01500 64 <hex> 0 <hex> 0 <hex>	

Lifeboat EngREDYtoSPEC_STBY
 File: H_CRP_SPI_R2SP.xls
 Author: R. Biggins



Step No.	Time	Activity/Remarks	TC/TLM	Display/ Branch
	ET=+ UT=+00.00.04	REPORT_TABLE REPORT_TABLE Command Parameter(s) : TABLEID_REPTAB SPB2N500 INDEX_REPTAB SPB3N500 COUNT_REPTAB SPB4N500 Subsch. ID : 370 Det. descr. : REQUEST TM PACKETS REPORTING CONTENTS OF A TABLE	SCB01500 66 <hex> 0 <hex> 0 <hex>	
	ET=+ UT=+00.00.04	REPORT_TABLE REPORT_TABLE Command Parameter(s) : TABLEID_REPTAB SPB2N500 INDEX_REPTAB SPB3N500 COUNT_REPTAB SPB4N500 Subsch. ID : 370 Det. descr. : REQUEST TM PACKETS REPORTING CONTENTS OF A TABLE	SCB01500 67 <hex> 0 <hex> 0 <hex>	
	ET=+ UT=+00.00.04	REPORT_TABLE REPORT_TABLE Command Parameter(s) : TABLEID_REPTAB SPB2N500 INDEX_REPTAB SPB3N500 COUNT_REPTAB SPB4N500 Subsch. ID : 370 Det. descr. : REQUEST TM PACKETS REPORTING CONTENTS OF A TABLE	SCB01500 d4 <hex> 0 <hex> 0 <hex>	
	ET=+ UT=+00.00.04	REPORT_TABLE REPORT_TABLE Command Parameter(s) : TABLEID_REPTAB SPB2N500 INDEX_REPTAB SPB3N500 COUNT_REPTAB SPB4N500 Subsch. ID : 370 Det. descr. : REQUEST TM PACKETS REPORTING CONTENTS OF A TABLE	SCB01500 d5 <hex> 0 <hex> 0 <hex>	
	ET=+ UT=+00.00.04	CHECK_MEMORY CHECK_MEMORY Command Parameter(s) : MEMORYID_CHECKMEM SPM9N500 STARTADDR_CHECKMEM SPMAN500 NSAU_CHECKMEM SPMBN500 Subsch. ID : 370 Det. descr. : CHECK MEMORY USING ABSOLUTE ADDRESSES	SCM02500 Program Memory 4000 <hex> 174b <hex>	

Lifeboat EngREDYtoSPEC_STBY
 File: H_CRP_SPI_R2SP.xls
 Author: R. Biggins



Step No.	Time	Activity/Remarks	TC/TLM	Display/ Branch
	ET=+ UT=+00.00.02	CHECK_MEMORY CHECK_MEMORY Command Parameter(s) : MEMORYID_CHECKMEM SPM9N500 STARTADDR_CHECKMEM SPMAN500 NSAU_CHECKMEM SPMBN500 Subsch. ID : 370 Det. descr. : CHECK MEMORY USING ABSOLUTE ADDRESSES	SCM02500 Program Memory 6000 <hex> ffff <hex>	
	ET=+ UT=+00.00.02	CHECK_MEMORY CHECK_MEMORY Command Parameter(s) : MEMORYID_CHECKMEM SPM9N500 STARTADDR_CHECKMEM SPMAN500 NSAU_CHECKMEM SPMBN500 Subsch. ID : 370 Det. descr. : CHECK MEMORY USING ABSOLUTE ADDRESSES	SCM02500 Program Memory 15fff <hex> 59 <hex>	
5		Switch on BSM		Next Step: 6
		This step switches on the SPIRE BSM.		
		Verify Telemetry JIGGSENSPWR SMJ0W515	= 0 <hex>	AND=SA_6_559
		Verify Telemetry CHOPSENSPWR SMC0W515	= 0 <hex>	AND=SA_6_559
	ET=+ UT=+00.00.02	SET_BBID_RAW SET_BBID Command Parameter(s) : BUILDING_BLOCK_ID SP01N500 Subsch. ID : 370 Det. descr. : SET BUILDING BLOCK IDENTIFIER	SC001500 81000001 <hex>	
	ET=+ UT=+00.00.01	SET_OBS_STEP_RAW SET_OBS_STEP Command Parameter(s) : OBSERVATION_STEP SP03N500 Subsch. ID : 370 Det. descr. : SET OBSERVATION STEP	SC003500 0 <hex>	
	ET=+ UT=+00.00.01	SET_OBS_MODE_RAW SET_OBS_MODE Command Parameter(s) : OBSERVING_MODE SP02N500 Subsch. ID : 370 Det. descr. : SET OBSERVING MODE	SC002500 201 <hex>	

Lifeboat EngREDYtoSPEC_STBY
 File: H_CRP_SPI_R2SP.xls
 Author: R. Biggins



Step No.	Time	Activity/Remarks	TC/TLM	Display/ Branch
	ET=+ UT=+00.00.01	SEND_DRCU_COMMAND_RAW SEND_DRCU_COMMAND Command Parameter(s) : DRCUCOMMAND SPD4N505 OVERRIDE SPD9N505 Subsch. ID : 370 Det. descr. : SEND A SINGLE COMMAND TO THE DRCU	SCD06505 90c00001 <hex> 0 <hex> (Def)	
	ET=+ UT=+00.00.01	SEND_DRCU_COMMAND_RAW SEND_DRCU_COMMAND Command Parameter(s) : DRCUCOMMAND SPD4N505 OVERRIDE SPD9N505 Subsch. ID : 370 Det. descr. : SEND A SINGLE COMMAND TO THE DRCU	SCD06505 91400001 <hex> 0 <hex> (Def)	
	ET=+ UT=+00.00.01	SEND_DRCU_COMMAND_RAW SEND_DRCU_COMMAND Command Parameter(s) : DRCUCOMMAND SPD4N505 OVERRIDE SPD9N505 Subsch. ID : 370 Det. descr. : SEND A SINGLE COMMAND TO THE DRCU	SCD06505 90c20003 <hex> 0 <hex> (Def)	
	ET=+ UT=+00.00.01	SEND_DRCU_COMMAND_RAW SEND_DRCU_COMMAND Command Parameter(s) : DRCUCOMMAND SPD4N505 OVERRIDE SPD9N505 Subsch. ID : 370 Det. descr. : SEND A SINGLE COMMAND TO THE DRCU	SCD06505 91420003 <hex> 0 <hex> (Def)	
	ET=+ UT=+00.00.01	SEND_DRCU_COMMAND_RAW SEND_DRCU_COMMAND Command Parameter(s) : DRCUCOMMAND SPD4N505 OVERRIDE SPD9N505 Subsch. ID : 370 Det. descr. : SEND A SINGLE COMMAND TO THE DRCU	SCD06505 90cd0770 <hex> 0 <hex> (Def)	
	ET=+ UT=+00.00.01	SEND_DRCU_COMMAND_RAW SEND_DRCU_COMMAND Command Parameter(s) : DRCUCOMMAND SPD4N505 OVERRIDE SPD9N505 Subsch. ID : 370 Det. descr. : SEND A SINGLE COMMAND TO THE DRCU	SCD06505 914d0f6e <hex> 0 <hex> (Def)	

Lifeboat EngREDYtoSPEC_STBY
 File: H_CRP_SPI_R2SP.xls
 Author: R. Biggins



Step No.	Time	Activity/Remarks	TC/TLM	Display/ Branch
	ET=+ UT=+00.00.01	SEND_DRCU_COMMAND_RAW SEND_DRCU_COMMAND Command Parameter(s) : DRCUCOMMAND SPD4N505 OVERRIDE SPD9N505 Subsch. ID : 370 Det. descr. : SEND A SINGLE COMMAND TO THE DRCU	SCD06505 90c60000 <hex> 0 <hex> (Def)	
	ET=+ UT=+00.00.01	SEND_DRCU_COMMAND_RAW SEND_DRCU_COMMAND Command Parameter(s) : DRCUCOMMAND SPD4N505 OVERRIDE SPD9N505 Subsch. ID : 370 Det. descr. : SEND A SINGLE COMMAND TO THE DRCU	SCD06505 90c38000 <hex> 0 <hex> (Def)	
	ET=+ UT=+00.00.01	SEND_DRCU_COMMAND_RAW SEND_DRCU_COMMAND Command Parameter(s) : DRCUCOMMAND SPD4N505 OVERRIDE SPD9N505 Subsch. ID : 370 Det. descr. : SEND A SINGLE COMMAND TO THE DRCU	SCD06505 91438000 <hex> 0 <hex> (Def)	
		Verify Telemetry MODE SM00M500	= BSM_ON	AND=SA_6_559
		The SPIRE BSM is now switched on.		
6		Initialise the BSM.		Next Step: 7
		This step initialises the SPIRE BSM.		
		Ensure that the BSM is on before continuing.		
		Verify Telemetry MODE SM00M500	= BSM_ON	AND=SA_6_559
		Verify Telemetry JIGGSENSPWR SMJ0W515	= 1 <hex>	AND=SA_6_559
		Verify Telemetry CHOPSENSPWR SMC0W515	= 1 <hex>	AND=SA_6_559
	ET=+ UT=+00.00.01	SET_BBID_RAW SET_BBID Command Parameter(s) : BUILDING_BLOCK_ID SP01N500 Subsch. ID : 370 Det. descr. : SET BUILDING BLOCK IDENTIFIER	SC001500 810a0001 <hex>	

Lifeboat EngREDYtoSPEC_STBY
 File: H_CRP_SPI_R2SP.xls
 Author: R. Biggins



Step No.	Time	Activity/Remarks	TC/TLM	Display/ Branch
	ET=+ UT=+00.00.01	SET_OBS_STEP_RAW SET_OBS_STEP Command Parameter(s) : OBSERVATION_STEP SP03N500 Subsch. ID : 370 Det. descr. : SET OBSERVATION STEP	SC003500 0 <hex>	
	ET=+ UT=+00.00.01	SET_OBS_MODE_RAW SET_OBS_MODE Command Parameter(s) : OBSERVING_MODE SP02N500 Subsch. ID : 370 Det. descr. : SET OBSERVING MODE	SC002500 202 <hex>	
	ET=+ UT=+00.00.01	SEND_DRCU_COMMAND_RAW SEND_DRCU_COMMAND Command Parameter(s) : DRCUCOMMAND SPD4N505 OVERRIDE SPD9N505 Subsch. ID : 370 Det. descr. : SEND A SINGLE COMMAND TO THE DRCU	SCD06505 90c60000 <hex> 0 <hex> (Def)	
	ET=+ UT=+00.00.01	SEND_DRCU_COMMAND_RAW SEND_DRCU_COMMAND Command Parameter(s) : DRCUCOMMAND SPD4N505 OVERRIDE SPD9N505 Subsch. ID : 370 Det. descr. : SEND A SINGLE COMMAND TO THE DRCU	SCD06505 90c78f86 <hex> 0 <hex> (Def)	
	ET=+ UT=+00.00.01	SEND_DRCU_COMMAND_RAW SEND_DRCU_COMMAND Command Parameter(s) : DRCUCOMMAND SPD4N505 OVERRIDE SPD9N505 Subsch. ID : 370 Det. descr. : SEND A SINGLE COMMAND TO THE DRCU	SCD06505 90d98211 <hex> 0 <hex> (Def)	
	ET=+ UT=+00.00.01	SEND_DRCU_COMMAND_RAW SEND_DRCU_COMMAND Command Parameter(s) : DRCUCOMMAND SPD4N505 OVERRIDE SPD9N505 Subsch. ID : 370 Det. descr. : SEND A SINGLE COMMAND TO THE DRCU	SCD06505 90c90ca8 <hex> 0 <hex> (Def)	

Lifeboat EngREDYtoSPEC_STBY
 File: H_CRP_SPI_R2SP.xls
 Author: R. Biggins



Step No.	Time	Activity/Remarks	TC/TLM	Display/ Branch
	ET=+ UT=+00.00.01	SEND_DRCU_COMMAND_RAW SEND_DRCU_COMMAND Command Parameter(s) : DRCUCOMMAND SPD4N505 OVERRIDE SPD9N505 Subsch. ID : 370 Det. descr. : SEND A SINGLE COMMAND TO THE DRCU	SCD06505 90c803e8 <hex> 0 <hex> (Def)	
	ET=+ UT=+00.00.01	SEND_DRCU_COMMAND_RAW SEND_DRCU_COMMAND Command Parameter(s) : DRCUCOMMAND SPD4N505 OVERRIDE SPD9N505 Subsch. ID : 370 Det. descr. : SEND A SINGLE COMMAND TO THE DRCU	SCD06505 90ca026c <hex> 0 <hex> (Def)	
	ET=+ UT=+00.00.01	SEND_DRCU_COMMAND_RAW SEND_DRCU_COMMAND Command Parameter(s) : DRCUCOMMAND SPD4N505 OVERRIDE SPD9N505 Subsch. ID : 370 Det. descr. : SEND A SINGLE COMMAND TO THE DRCU	SCD06505 90cf1000 <hex> 0 <hex> (Def)	
	ET=+ UT=+00.00.01	SEND_DRCU_COMMAND_RAW SEND_DRCU_COMMAND Command Parameter(s) : DRCUCOMMAND SPD4N505 OVERRIDE SPD9N505 Subsch. ID : 370 Det. descr. : SEND A SINGLE COMMAND TO THE DRCU	SCD06505 90d1ffff <hex> 0 <hex> (Def)	
	ET=+ UT=+00.00.01	SEND_DRCU_COMMAND_RAW SEND_DRCU_COMMAND Command Parameter(s) : DRCUCOMMAND SPD4N505 OVERRIDE SPD9N505 Subsch. ID : 370 Det. descr. : SEND A SINGLE COMMAND TO THE DRCU	SCD06505 90c39300 <hex> 0 <hex> (Def)	
	ET=+ UT=+00.00.01	SEND_DRCU_COMMAND_RAW SEND_DRCU_COMMAND Command Parameter(s) : DRCUCOMMAND SPD4N505 OVERRIDE SPD9N505 Subsch. ID : 370 Det. descr. : SEND A SINGLE COMMAND TO THE DRCU	SCD06505 90c20001 <hex> 0 <hex> (Def)	

Lifeboat EngREDYtoSPEC_STBY
 File: H_CRP_SPI_R2SP.xls
 Author: R. Biggins



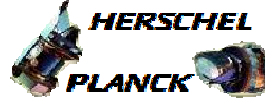
Step No.	Time	Activity/Remarks	TC/TLM	Display/ Branch
	ET=+ UT=+00.00.01	SEND_DRCU_COMMAND_RAW SEND_DRCU_COMMAND Command Parameter(s) : DRCUCOMMAND SPD4N505 OVERRIDE SPD9N505 Subsch. ID : 370 Det. descr. : SEND A SINGLE COMMAND TO THE DRCU	SCD06505 90c60001 <hex> 0 <hex> (Def)	
	ET=+ UT=+00.00.01	SET_BBID_RAW SET_BBID Command Parameter(s) : BUILDING_BLOCK_ID SP01N500 Subsch. ID : 370 Det. descr. : SET BUILDING BLOCK IDENTIFIER	SC001500 810e0001 <hex>	
	ET=+ UT=+00.00.01	SET_OBS_STEP_RAW SET_OBS_STEP Command Parameter(s) : OBSERVATION_STEP SP03N500 Subsch. ID : 370 Det. descr. : SET OBSERVATION STEP	SC003500 0 <hex>	
	ET=+ UT=+00.00.01	SET_OBS_MODE_RAW SET_OBS_MODE Command Parameter(s) : OBSERVING_MODE SP02N500 Subsch. ID : 370 Det. descr. : SET OBSERVING MODE	SC002500 202 <hex>	
	ET=+ UT=+00.00.01	SEND_DRCU_COMMAND_RAW SEND_DRCU_COMMAND Command Parameter(s) : DRCUCOMMAND SPD4N505 OVERRIDE SPD9N505 Subsch. ID : 370 Det. descr. : SEND A SINGLE COMMAND TO THE DRCU	SCD06505 90c60000 <hex> 0 <hex> (Def)	
	ET=+ UT=+00.00.01	SEND_DRCU_COMMAND_RAW SEND_DRCU_COMMAND Command Parameter(s) : DRCUCOMMAND SPD4N505 OVERRIDE SPD9N505 Subsch. ID : 370 Det. descr. : SEND A SINGLE COMMAND TO THE DRCU	SCD06505 91479946 <hex> 0 <hex> (Def)	

Lifeboat EngREDYtoSPEC_STBY
 File: H_CRP_SPI_R2SP.xls
 Author: R. Biggins



Step No.	Time	Activity/Remarks	TC/TLM	Display/ Branch
	ET=+ UT=+00.00.01	SEND_DRCU_COMMAND_RAW SEND_DRCU_COMMAND Command Parameter(s) : DRCUCOMMAND SPD4N505 OVERRIDE SPD9N505 Subsch. ID : 370 Det. descr. : SEND A SINGLE COMMAND TO THE DRCU	SCD06505 91491b58 <hex> 0 <hex> (Def)	
	ET=+ UT=+00.00.01	SEND_DRCU_COMMAND_RAW SEND_DRCU_COMMAND Command Parameter(s) : DRCUCOMMAND SPD4N505 OVERRIDE SPD9N505 Subsch. ID : 370 Det. descr. : SEND A SINGLE COMMAND TO THE DRCU	SCD06505 914805dc <hex> 0 <hex> (Def)	
	ET=+ UT=+00.00.01	SEND_DRCU_COMMAND_RAW SEND_DRCU_COMMAND Command Parameter(s) : DRCUCOMMAND SPD4N505 OVERRIDE SPD9N505 Subsch. ID : 370 Det. descr. : SEND A SINGLE COMMAND TO THE DRCU	SCD06505 914a01f4 <hex> 0 <hex> (Def)	
	ET=+ UT=+00.00.01	SEND_DRCU_COMMAND_RAW SEND_DRCU_COMMAND Command Parameter(s) : DRCUCOMMAND SPD4N505 OVERRIDE SPD9N505 Subsch. ID : 370 Det. descr. : SEND A SINGLE COMMAND TO THE DRCU	SCD06505 914f1a0b <hex> 0 <hex> (Def)	
	ET=+ UT=+00.00.01	SEND_DRCU_COMMAND_RAW SEND_DRCU_COMMAND Command Parameter(s) : DRCUCOMMAND SPD4N505 OVERRIDE SPD9N505 Subsch. ID : 370 Det. descr. : SEND A SINGLE COMMAND TO THE DRCU	SCD06505 9151ffff <hex> 0 <hex> (Def)	
	ET=+ UT=+00.00.01	SEND_DRCU_COMMAND_RAW SEND_DRCU_COMMAND Command Parameter(s) : DRCUCOMMAND SPD4N505 OVERRIDE SPD9N505 Subsch. ID : 370 Det. descr. : SEND A SINGLE COMMAND TO THE DRCU	SCD06505 91439a60 <hex> 0 <hex> (Def)	

Lifeboat EngREDYtoSPEC_STBY
 File: H_CRP_SPI_R2SP.xls
 Author: R. Biggins



Step No.	Time	Activity/Remarks	TC/TLM	Display/ Branch
	ET=+ UT=+00.00.01	SEND_DRCU_COMMAND_RAW SEND_DRCU_COMMAND Command Parameter(s) : DRCUCOMMAND SPD4N505 OVERRIDE SPD9N505 Subsch. ID : 370 Det. descr. : SEND A SINGLE COMMAND TO THE DRCU	SCD06505 91420001 <hex> 0 <hex> (Def)	
	ET=+ UT=+00.00.01	SEND_DRCU_COMMAND_RAW SEND_DRCU_COMMAND Command Parameter(s) : DRCUCOMMAND SPD4N505 OVERRIDE SPD9N505 Subsch. ID : 370 Det. descr. : SEND A SINGLE COMMAND TO THE DRCU	SCD06505 90c60001 <hex> 0 <hex> (Def)	
		Verify Telemetry MODE SM00M500	= BSM_INIT	AND=SA_6_559
		The BSM has now been initialised.		
7		Switch on SPIRE SMEC		Next Step: 8
		This step switches on the SPIRE SMEC.		
		Verify Telemetry SMECLVDPWR SMS1W515	= 0 <hex>	AND=SA_6_559
		Verify Telemetry SMECENCPWR SMS0W515	= 0	AND=SA_6_559
		Verify Telemetry MODE SM00M500	= SMEC_OFF	AND=SA_6_559
	ET=+ UT=+00.00.01	SET_BBID_RAW SET_BBID Command Parameter(s) : BUILDING_BLOCK_ID SP01N500 Subsch. ID : 370 Det. descr. : SET BUILDING BLOCK IDENTIFIER	SC001500 82120001 <hex>	
	ET=+ UT=+00.00.01	SET_OBS_STEP_RAW SET_OBS_STEP Command Parameter(s) : OBSERVATION_STEP SP03N500 Subsch. ID : 370 Det. descr. : SET OBSERVATION STEP	SC003500 0 <hex>	

Lifeboat EngREDYtoSPEC_STBY
 File: H_CRP_SPI_R2SP.xls
 Author: R. Biggins



Step No.	Time	Activity/Remarks	TC/TLM	Display/ Branch
	ET=+ UT=+00.00.01	SET_OBS_MODE_RAW SET_OBS_MODE Command Parameter(s) : OBSERVING_MODE SP02N500 Subsch. ID : 370 Det. descr. : SET OBSERVING MODE	SC002500 204 <hex>	
	ET=+ UT=+00.00.01	SEND_DRCU_COMMAND_RAW SEND_DRCU_COMMAND Command Parameter(s) : DRCUCOMMAND SPD4N505 OVERRIDE SPD9N505 Subsch. ID : 370 Det. descr. : SEND A SINGLE COMMAND TO THE DRCU	SCD06505 90400001 <hex> 0 <hex> (Def)	
	ET=+ UT=+00.00.01	SEND_DRCU_COMMAND_RAW SEND_DRCU_COMMAND Command Parameter(s) : DRCUCOMMAND SPD4N505 OVERRIDE SPD9N505 Subsch. ID : 370 Det. descr. : SEND A SINGLE COMMAND TO THE DRCU	SCD06505 90410001 <hex> 0 <hex> (Def)	
	ET=+ UT=+00.00.01	SEND_DRCU_COMMAND_RAW SEND_DRCU_COMMAND Command Parameter(s) : DRCUCOMMAND SPD4N505 OVERRIDE SPD9N505 Subsch. ID : 370 Det. descr. : SEND A SINGLE COMMAND TO THE DRCU	SCD06505 905f2e62 <hex> 0 <hex> (Def)	
	ET=+ UT=+00.00.01	SEND_DRCU_COMMAND_RAW SEND_DRCU_COMMAND Command Parameter(s) : DRCUCOMMAND SPD4N505 OVERRIDE SPD9N505 Subsch. ID : 370 Det. descr. : SEND A SINGLE COMMAND TO THE DRCU	SCD06505 905e1e94 <hex> 0 <hex> (Def)	
	ET=+ UT=+00.00.01	SEND_DRCU_COMMAND_RAW SEND_DRCU_COMMAND Command Parameter(s) : DRCUCOMMAND SPD4N505 OVERRIDE SPD9N505 Subsch. ID : 370 Det. descr. : SEND A SINGLE COMMAND TO THE DRCU	SCD06505 90542ea5 <hex> 0 <hex> (Def)	

Lifeboat EngREDYtoSPEC_STBY
 File: H_CRP_SPI_R2SP.xls
 Author: R. Biggins



Step No.	Time	Activity/Remarks	TC/TLM	Display/ Branch
	ET=+ UT=+00.00.01	SEND_DRCU_COMMAND_RAW SEND_DRCU_COMMAND Command Parameter(s) : DRCUCOMMAND SPD4N505 OVERRIDE SPD9N505 Subsch. ID : 370 Det. descr. : SEND A SINGLE COMMAND TO THE DRCU	SCD06505 90557df1 <hex> 0 <hex> (Def)	
	ET=+ UT=+00.00.15	SEND_DRCU_COMMAND_RAW SEND_DRCU_COMMAND Command Parameter(s) : DRCUCOMMAND SPD4N505 OVERRIDE SPD9N505 Subsch. ID : 370 Det. descr. : SEND A SINGLE COMMAND TO THE DRCU	SCD06505 9051012c <hex> 0 <hex> (Def)	
	ET=+ UT=+00.00.01	SEND_DRCU_COMMAND_RAW SEND_DRCU_COMMAND Command Parameter(s) : DRCUCOMMAND SPD4N505 OVERRIDE SPD9N505 Subsch. ID : 370 Det. descr. : SEND A SINGLE COMMAND TO THE DRCU	SCD06505 904e07d0 <hex> 0 <hex> (Def)	
	ET=+ UT=+00.00.01	SEND_DRCU_COMMAND_RAW SEND_DRCU_COMMAND Command Parameter(s) : DRCUCOMMAND SPD4N505 OVERRIDE SPD9N505 Subsch. ID : 370 Det. descr. : SEND A SINGLE COMMAND TO THE DRCU	SCD06505 904c07d0 <hex> 0 <hex> (Def)	
	ET=+ UT=+00.00.01	SEND_DRCU_COMMAND_RAW SEND_DRCU_COMMAND Command Parameter(s) : DRCUCOMMAND SPD4N505 OVERRIDE SPD9N505 Subsch. ID : 370 Det. descr. : SEND A SINGLE COMMAND TO THE DRCU	SCD06505 91d4006b <hex> 0 <hex> (Def)	
	ET=+ UT=+00.00.01	SEND_DRCU_COMMAND_RAW SEND_DRCU_COMMAND Command Parameter(s) : DRCUCOMMAND SPD4N505 OVERRIDE SPD9N505 Subsch. ID : 370 Det. descr. : SEND A SINGLE COMMAND TO THE DRCU	SCD06505 91d90059 <hex> 0 <hex> (Def)	

Lifeboat EngREDYtoSPEC_STBY
 File: H_CRP_SPI_R2SP.xls
 Author: R. Biggins



Step No.	Time	Activity/Remarks	TC/TLM	Display/ Branch
	ET=+ UT=+00.00.01	SEND_DRCU_COMMAND_RAW SEND_DRCU_COMMAND Command Parameter(s) : DRCUCOMMAND SPD4N505 OVERRIDE SPD9N505 Subsch. ID : 370 Det. descr. : SEND A SINGLE COMMAND TO THE DRCU	SCD06505 91da006f <hex> 0 <hex> (Def)	
	ET=+ UT=+00.00.01	SEND_DRCU_COMMAND_RAW SEND_DRCU_COMMAND Command Parameter(s) : DRCUCOMMAND SPD4N505 OVERRIDE SPD9N505 Subsch. ID : 370 Det. descr. : SEND A SINGLE COMMAND TO THE DRCU	SCD06505 91db0057 <hex> 0 <hex> (Def)	
	ET=+ UT=+00.00.01	SEND_DRCU_COMMAND_RAW SEND_DRCU_COMMAND Command Parameter(s) : DRCUCOMMAND SPD4N505 OVERRIDE SPD9N505 Subsch. ID : 370 Det. descr. : SEND A SINGLE COMMAND TO THE DRCU	SCD06505 91dc006e <hex> 0 <hex> (Def)	
	ET=+ UT=+00.00.01	SEND_DRCU_COMMAND_RAW SEND_DRCU_COMMAND Command Parameter(s) : DRCUCOMMAND SPD4N505 OVERRIDE SPD9N505 Subsch. ID : 370 Det. descr. : SEND A SINGLE COMMAND TO THE DRCU	SCD06505 91dd0069 <hex> 0 <hex> (Def)	
	ET=+ UT=+00.00.01	SEND_DRCU_COMMAND_RAW SEND_DRCU_COMMAND Command Parameter(s) : DRCUCOMMAND SPD4N505 OVERRIDE SPD9N505 Subsch. ID : 370 Det. descr. : SEND A SINGLE COMMAND TO THE DRCU	SCD06505 91de0065 <hex> 0 <hex> (Def)	
	ET=+ UT=+00.00.01	SEND_DRCU_COMMAND_RAW SEND_DRCU_COMMAND Command Parameter(s) : DRCUCOMMAND SPD4N505 OVERRIDE SPD9N505 Subsch. ID : 370 Det. descr. : SEND A SINGLE COMMAND TO THE DRCU	SCD06505 91c40013 <hex> 0 <hex> (Def)	

Lifeboat EngREDYtoSPEC_STBY
 File: H_CRP_SPI_R2SP.xls
 Author: R. Biggins



Step No.	Time	Activity/Remarks	TC/TLM	Display/ Branch
	ET=+ UT=+00.00.01	SEND_DRCU_COMMAND_RAW SEND_DRCU_COMMAND Command Parameter(s) : DRCUCOMMAND SPD4N505 OVERRIDE SPD9N505 Subsch. ID : 370 Det. descr. : SEND A SINGLE COMMAND TO THE DRCU	SCD06505 91c3ffff <hex> 0 <hex> (Def)	
	ET=+ UT=+00.00.01	SEND_DRCU_COMMAND_RAW SEND_DRCU_COMMAND Command Parameter(s) : DRCUCOMMAND SPD4N505 OVERRIDE SPD9N505 Subsch. ID : 370 Det. descr. : SEND A SINGLE COMMAND TO THE DRCU	SCD06505 91c10001 <hex> 0 <hex> (Def)	
		Verify Telemetry SMECENCPWR SMS0W515	= 1	AND=SA_6_559
		Verify Telemetry SMECLVDTPWR SMS1W515	= 1 <hex>	AND=SA_6_559
		Verify Telemetry MODE SM00M500	= SMEC_ON	AND=SA_6_559
8		Switch ON Spectrometer This step switches on the SPIRE Spectrometer.		Next Step: 9
		Verify Telemetry SLIABITSTAT SM_1X520	= OFF	AND=SA_6_559
		Verify Telemetry is approx SLIAP5V SML3V510	= 0.0 V	AND=SA_7_559
		Verify Telemetry is approx SLIAP9V SML4V510	= 0.0 V	AND=SA_7_559
		Verify Telemetry is approx SLIAM9V SML5V510	= 0.0 V	AND=SA_7_559
		Verify Telemetry SPECJFETSTAT SMF0F510	= 0 <hex>	AND=SA_6_559
		Verify Telemetry is SSWJFET1V SM00V510	= 0.0 V	AND=SA_6_559
		Verify Telemetry is SSWJFET2V SM01V510	= 0.0 V	AND=SA_6_559
		Verify Telemetry is SLWJFET1V SM10V510	= 0.0 V	AND=SA_6_559

Lifeboat EngREDYtoSPEC_STBY
 File: H_CRP_SPI_R2SP.xls
 Author: R. Biggins



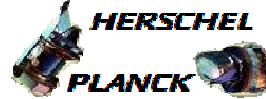
Step No.	Time	Activity/Remarks	TC/TLM	Display/ Branch
	ET=+ UT=+00.00.11	SET_BBID_RAW SET_BBID Command Parameter(s) : BUILDING_BLOCK_ID SP01N500 Subsch. ID : 370 Det. descr. : SET BUILDING BLOCK IDENTIFIER	SC001500 860e0001 <hex>	
	ET=+ UT=+00.00.01	SET_OBS_STEP_RAW SET_OBS_STEP Command Parameter(s) : OBSERVATION_STEP SP03N500 Subsch. ID : 370 Det. descr. : SET OBSERVATION STEP	SC003500 0 <hex>	
	ET=+ UT=+00.00.01	SET_OBS_MODE_RAW SET_OBS_MODE Command Parameter(s) : OBSERVING_MODE SP02N500 Subsch. ID : 370 Det. descr. : SET OBSERVING MODE	SC002500 206 <hex>	
	ET=+ UT=+00.00.01	SET_OBS_STEP_RAW SET_OBS_STEP Command Parameter(s) : OBSERVATION_STEP SP03N500 Subsch. ID : 370 Det. descr. : SET OBSERVATION STEP	SC003500 1 <hex>	
	ET=+ UT=+00.00.01	SEND_DRCU_COMMAND_RAW SEND_DRCU_COMMAND Command Parameter(s) : DRCUCOMMAND SPD4N505 OVERRIDE SPD9N505 Subsch. ID : 370 Det. descr. : SEND A SINGLE COMMAND TO THE DRCU	SCD06505 a0870006 <hex> 0 <hex> (Def)	
	ET=+ UT=+00.00.01	SEND_DRCU_COMMAND_RAW SEND_DRCU_COMMAND Command Parameter(s) : DRCUCOMMAND SPD4N505 OVERRIDE SPD9N505 Subsch. ID : 370 Det. descr. : SEND A SINGLE COMMAND TO THE DRCU	SCD06505 843000ff <hex> 0 <hex> (Def)	

Lifeboat EngREDYtoSPEC_STBY
 File: H_CRP_SPI_R2SP.xls
 Author: R. Biggins



Step No.	Time	Activity/Remarks	TC/TLM	Display/ Branch
	ET=+ UT=+00.00.01	SEND_DRCU_COMMAND_RAW SEND_DRCU_COMMAND Command Parameter(s) : DRCUCOMMAND SPD4N505 OVERRIDE SPD9N505 Subsch. ID : 370 Det. descr. : SEND A SINGLE COMMAND TO THE DRCU	SCD06505 84390079 <hex> 0 <hex> (Def)	
	ET=+ UT=+00.00.01	SEND_DRCU_COMMAND_RAW SEND_DRCU_COMMAND Command Parameter(s) : DRCUCOMMAND SPD4N505 OVERRIDE SPD9N505 Subsch. ID : 370 Det. descr. : SEND A SINGLE COMMAND TO THE DRCU	SCD06505 84380001 <hex> 0 <hex> (Def)	
	ET=+ UT=+00.00.01	SEND_DRCU_COMMAND_RAW SEND_DRCU_COMMAND Command Parameter(s) : DRCUCOMMAND SPD4N505 OVERRIDE SPD9N505 Subsch. ID : 370 Det. descr. : SEND A SINGLE COMMAND TO THE DRCU	SCD06505 84310002 <hex> 0 <hex> (Def)	
	ET=+ UT=+00.00.01	SEND_DRCU_COMMAND_RAW SEND_DRCU_COMMAND Command Parameter(s) : DRCUCOMMAND SPD4N505 OVERRIDE SPD9N505 Subsch. ID : 370 Det. descr. : SEND A SINGLE COMMAND TO THE DRCU	SCD06505 84320002 <hex> 0 <hex> (Def)	
	ET=+ UT=+00.00.01	SEND_DRCU_COMMAND_RAW SEND_DRCU_COMMAND Command Parameter(s) : DRCUCOMMAND SPD4N505 OVERRIDE SPD9N505 Subsch. ID : 370 Det. descr. : SEND A SINGLE COMMAND TO THE DRCU	SCD06505 843a0084 <hex> 0 <hex> (Def)	
	ET=+ UT=+00.00.01	SEND_DRCU_COMMAND_RAW SEND_DRCU_COMMAND Command Parameter(s) : DRCUCOMMAND SPD4N505 OVERRIDE SPD9N505 Subsch. ID : 370 Det. descr. : SEND A SINGLE COMMAND TO THE DRCU	SCD06505 843b0087 <hex> 0 <hex> (Def)	

Lifeboat EngREDYtoSPEC_STBY
 File: H_CRP_SPI_R2SP.xls
 Author: R. Biggins



Step No.	Time	Activity/Remarks	TC/TLM	Display/ Branch
	ET=+ UT=+00.00.01	SEND_DRCU_COMMAND_RAW SEND_DRCU_COMMAND Command Parameter(s) : DRCUCOMMAND SPD4N505 OVERRIDE SPD9N505 Subsch. ID : 370 Det. descr. : SEND A SINGLE COMMAND TO THE DRCU	SCD06505 843c0014 <hex> 0 <hex> (Def)	
	ET=+ UT=+00.00.01	SEND_DRCU_COMMAND_RAW SEND_DRCU_COMMAND Command Parameter(s) : DRCUCOMMAND SPD4N505 OVERRIDE SPD9N505 Subsch. ID : 370 Det. descr. : SEND A SINGLE COMMAND TO THE DRCU	SCD06505 843e0001 <hex> 0 <hex> (Def)	
	ET=+ UT=+00.00.02	SEND_DRCU_COMMAND_RAW SEND_DRCU_COMMAND Command Parameter(s) : DRCUCOMMAND SPD4N505 OVERRIDE SPD9N505 Subsch. ID : 370 Det. descr. : SEND A SINGLE COMMAND TO THE DRCU	SCD06505 843e0000 <hex> 0 <hex> (Def)	
	ET=+ UT=+00.00.01	SEND_DRCU_COMMAND_RAW SEND_DRCU_COMMAND Command Parameter(s) : DRCUCOMMAND SPD4N505 OVERRIDE SPD9N505 Subsch. ID : 370 Det. descr. : SEND A SINGLE COMMAND TO THE DRCU	SCD06505 843c001c <hex> 0 <hex> (Def)	
	ET=+ UT=+00.00.01	SEND_DRCU_COMMAND_RAW SEND_DRCU_COMMAND Command Parameter(s) : DRCUCOMMAND SPD4N505 OVERRIDE SPD9N505 Subsch. ID : 370 Det. descr. : SEND A SINGLE COMMAND TO THE DRCU	SCD06505 843e0001 <hex> 0 <hex> (Def)	
	ET=+ UT=+00.00.03	SEND_DRCU_COMMAND_RAW SEND_DRCU_COMMAND Command Parameter(s) : DRCUCOMMAND SPD4N505 OVERRIDE SPD9N505 Subsch. ID : 370 Det. descr. : SEND A SINGLE COMMAND TO THE DRCU	SCD06505 843e0000 <hex> 0 <hex> (Def)	

Lifeboat EngREDYtoSPEC_STBY
 File: H_CRP_SPI_R2SP.xls
 Author: R. Biggins



Step No.	Time	Activity/Remarks	TC/TLM	Display/ Branch
	ET=+ UT=+00.00.01	SEND_DRCU_COMMAND_RAW SEND_DRCU_COMMAND Command Parameter(s) : DRCUCOMMAND SPD4N505 OVERRIDE SPD9N505 Subsch. ID : 370 Det. descr. : SEND A SINGLE COMMAND TO THE DRCU	SCD06505 84360086 <hex> 0 <hex> (Def)	
	ET=+ UT=+00.00.01	SEND_DRCU_COMMAND_RAW SEND_DRCU_COMMAND Command Parameter(s) : DRCUCOMMAND SPD4N505 OVERRIDE SPD9N505 Subsch. ID : 370 Det. descr. : SEND A SINGLE COMMAND TO THE DRCU	SCD06505 84370006 <hex> 0 <hex> (Def)	
	ET=+ UT=+00.00.01	SEND_DRCU_COMMAND_RAW SEND_DRCU_COMMAND Command Parameter(s) : DRCUCOMMAND SPD4N505 OVERRIDE SPD9N505 Subsch. ID : 370 Det. descr. : SEND A SINGLE COMMAND TO THE DRCU	SCD06505 8434004c <hex> 0 <hex> (Def)	
	ET=+ UT=+00.00.01	SEND_DRCU_COMMAND_RAW SEND_DRCU_COMMAND Command Parameter(s) : DRCUCOMMAND SPD4N505 OVERRIDE SPD9N505 Subsch. ID : 370 Det. descr. : SEND A SINGLE COMMAND TO THE DRCU	SCD06505 84370007 <hex> 0 <hex> (Def)	
	ET=+ UT=+00.00.31	SEND_DRCU_COMMAND_RAW SEND_DRCU_COMMAND Command Parameter(s) : DRCUCOMMAND SPD4N505 OVERRIDE SPD9N505 Subsch. ID : 370 Det. descr. : SEND A SINGLE COMMAND TO THE DRCU	SCD06505 84310034 <hex> 0 <hex> (Def)	
	ET=+ UT=+00.00.01	SEND_DRCU_COMMAND_RAW SEND_DRCU_COMMAND Command Parameter(s) : DRCUCOMMAND SPD4N505 OVERRIDE SPD9N505 Subsch. ID : 370 Det. descr. : SEND A SINGLE COMMAND TO THE DRCU	SCD06505 8432002d <hex> 0 <hex> (Def)	

Lifeboat EngREDYtoSPEC_STBY
 File: H_CRP_SPI_R2SP.xls
 Author: R. Biggins



Step No.	Time	Activity/Remarks	TC/TLM	Display/ Branch
	ET=+ UT=+00.00.01	SEND_DRCU_COMMAND_RAW SEND_DRCU_COMMAND Command Parameter(s) : DRCUCOMMAND SPD4N505 OVERRIDE SPD9N505 Subsch. ID : 370 Det. descr. : SEND A SINGLE COMMAND TO THE DRCU	SCD06505 843e0000 <hex> 0 <hex> (Def)	
	ET=+ UT=+00.00.01	FLUSH_FIFO FLUSH_FIFO Command Parameter(s) : FIFOFLAGS SPD0N505 Subsch. ID : 370 Det. descr. : FORCE DPU TO READ SCIENCE DATA FROM FIFOS AND FLUSH CONTENTS	SCD01505 1000 <hex>	
	ET=+ UT=+00.00.03	SEND_DRCU_COMMAND_RAW SEND_DRCU_COMMAND Command Parameter(s) : DRCUCOMMAND SPD4N505 OVERRIDE SPD9N505 Subsch. ID : 370 Det. descr. : SEND A SINGLE COMMAND TO THE DRCU	SCD06505 843c0014 <hex> 0 <hex> (Def)	
	ET=+ UT=+00.00.01	SEND_DRCU_COMMAND_RAW SEND_DRCU_COMMAND Command Parameter(s) : DRCUCOMMAND SPD4N505 OVERRIDE SPD9N505 Subsch. ID : 370 Det. descr. : SEND A SINGLE COMMAND TO THE DRCU	SCD06505 843e0001 <hex> 0 <hex> (Def)	
	ET=+ UT=+00.00.02	SEND_DRCU_COMMAND_RAW SEND_DRCU_COMMAND Command Parameter(s) : DRCUCOMMAND SPD4N505 OVERRIDE SPD9N505 Subsch. ID : 370 Det. descr. : SEND A SINGLE COMMAND TO THE DRCU	SCD06505 843e0000 <hex> 0 <hex> (Def)	
	ET=+ UT=+00.00.01	SEND_DRCU_COMMAND_RAW SEND_DRCU_COMMAND Command Parameter(s) : DRCUCOMMAND SPD4N505 OVERRIDE SPD9N505 Subsch. ID : 370 Det. descr. : SEND A SINGLE COMMAND TO THE DRCU	SCD06505 843c001c <hex> 0 <hex> (Def)	

Lifeboat EngREDYtoSPEC_STBY
 File: H_CRP_SPI_R2SP.xls
 Author: R. Biggins



Step No.	Time	Activity/Remarks	TC/TLM	Display/ Branch
	ET=+ UT=+00.00.01	SEND_DRCU_COMMAND_RAW SEND_DRCU_COMMAND Command Parameter(s) : DRCUCOMMAND SPD4N505 OVERRIDE SPD9N505 Subsch. ID : 370 Det. descr. : SEND A SINGLE COMMAND TO THE DRCU	SCD06505 843e0001 <hex> 0 <hex> (Def)	
	ET=+ UT=+00.00.03	SEND_DRCU_COMMAND_RAW SEND_DRCU_COMMAND Command Parameter(s) : DRCUCOMMAND SPD4N505 OVERRIDE SPD9N505 Subsch. ID : 370 Det. descr. : SEND A SINGLE COMMAND TO THE DRCU	SCD06505 843e0000 <hex> 0 <hex> (Def)	
	ET=+ UT=+00.00.01	FLUSH_FIFO FLUSH_FIFO Command Parameter(s) : FIFOFLAGS SPD0N505 Subsch. ID : 370 Det. descr. : FORCE DPU TO READ SCIENCE DATA FROM FIFOS AND FLUSH CONTENTS	SCD01505 1000 <hex>	
	ET=+ UT=+00.00.01	SEND_DRCU_COMMAND_RAW SEND_DRCU_COMMAND Command Parameter(s) : DRCUCOMMAND SPD4N505 OVERRIDE SPD9N505 Subsch. ID : 370 Det. descr. : SEND A SINGLE COMMAND TO THE DRCU	SCD06505 843c0004 <hex> 0 <hex> (Def)	
	ET=+ UT=+00.00.01	SEND_DRCU_COMMAND_RAW SEND_DRCU_COMMAND Command Parameter(s) : DRCUCOMMAND SPD4N505 OVERRIDE SPD9N505 Subsch. ID : 370 Det. descr. : SEND A SINGLE COMMAND TO THE DRCU	SCD06505 843d0000 <hex> 0 <hex> (Def)	
	ET=+ UT=+00.00.01	SEND_DRCU_COMMAND_RAW SEND_DRCU_COMMAND Command Parameter(s) : DRCUCOMMAND SPD4N505 OVERRIDE SPD9N505 Subsch. ID : 370 Det. descr. : SEND A SINGLE COMMAND TO THE DRCU	SCD06505 843e0001 <hex> 0 <hex> (Def)	

Lifeboat EngREDYtoSPEC_STBY
 File: H_CRP_SPI_R2SP.xls
 Author: R. Biggins



Step No.	Time	Activity/Remarks	TC/TLM	Display/ Branch
	ET=+ UT=+00.00.30	SEND_DRCU_COMMAND_RAW SEND_DRCU_COMMAND Command Parameter(s) : DRCUCOMMAND SPD4N505 OVERRIDE SPD9N505 Subsch. ID : 370 Det. descr. : SEND A SINGLE COMMAND TO THE DRCU	SCD06505 84350066 <hex> 0 <hex> (Def)	
	ET=+ UT=+00.00.01	SEND_DRCU_COMMAND_RAW SEND_DRCU_COMMAND Command Parameter(s) : DRCUCOMMAND SPD4N505 OVERRIDE SPD9N505 Subsch. ID : 370 Det. descr. : SEND A SINGLE COMMAND TO THE DRCU	SCD06505 84360052 <hex> 0 <hex> (Def)	
	ET=+ UT=+00.00.01	SEND_DRCU_COMMAND_RAW SEND_DRCU_COMMAND Command Parameter(s) : DRCUCOMMAND SPD4N505 OVERRIDE SPD9N505 Subsch. ID : 370 Det. descr. : SEND A SINGLE COMMAND TO THE DRCU	SCD06505 84340052 <hex> 0 <hex> (Def)	
	ET=+ UT=+00.00.10	SEND_DRCU_COMMAND_RAW SEND_DRCU_COMMAND Command Parameter(s) : DRCUCOMMAND SPD4N505 OVERRIDE SPD9N505 Subsch. ID : 370 Det. descr. : SEND A SINGLE COMMAND TO THE DRCU	SCD06505 843c0004 <hex> 0 <hex> (Def)	
	ET=+ UT=+00.00.01	SEND_DRCU_COMMAND_RAW SEND_DRCU_COMMAND Command Parameter(s) : DRCUCOMMAND SPD4N505 OVERRIDE SPD9N505 Subsch. ID : 370 Det. descr. : SEND A SINGLE COMMAND TO THE DRCU	SCD06505 843d0000 <hex> 0 <hex> (Def)	
	ET=+ UT=+00.00.01	SEND_DRCU_COMMAND_RAW SEND_DRCU_COMMAND Command Parameter(s) : DRCUCOMMAND SPD4N505 OVERRIDE SPD9N505 Subsch. ID : 370 Det. descr. : SEND A SINGLE COMMAND TO THE DRCU	SCD06505 843e0000 <hex> 0 <hex> (Def)	

Lifeboat EngREDYtoSPEC_STBY
 File: H_CRP_SPI_R2SP.xls
 Author: R. Biggins



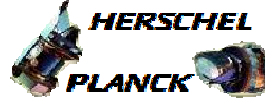
Step No.	Time	Activity/Remarks	TC/TLM	Display/ Branch
		Verify Telemetry MODE SM00M500	= SPECSTBY	AND=SA_6_559
	ET=+ UT=+00.00.01	SET_BBID Command Parameter(s) : BUILDING_BLOCK_ID SP01N500 Subsch. ID : 370 Det. descr. : SET BUILDING BLOCK IDENTIFIER	SC001500 8d490001 <hex>	
	ET=+ UT=+00.00.01	SEND_DRCU_COMMAND_RAW SEND_DRCU_COMMAND Command Parameter(s) : DRCUCOMMAND SPD4N505 OVERRIDE SPD9N505 Subsch. ID : 370 Det. descr. : SEND A SINGLE COMMAND TO THE DRCU	SCD06505 91c10000 <hex> 0 <hex> (Def)	
	ET=+ UT=+00.00.02	FLUSH_FIFO_RAW FLUSH_FIFO Command Parameter(s) : FIFOFLAGS SPD0N505 Subsch. ID : 370 Det. descr. : FORCE DPU TO READ SCIENCE DATA FROM FIFOS AND FLUSH CONTENTS	SCD01505 2000 <hex>	
	ET=+ UT=+00.00.02	SEND_DRCU_COMMAND_RAW SEND_DRCU_COMMAND Command Parameter(s) : DRCUCOMMAND SPD4N505 OVERRIDE SPD9N505 Subsch. ID : 370 Det. descr. : SEND A SINGLE COMMAND TO THE DRCU	SCD06505 91c40000 <hex> 0 <hex> (Def)	
	ET=+ UT=+00.00.01	SET_BBID Command Parameter(s) : BUILDING_BLOCK_ID SP01N500 Subsch. ID : 370 Det. descr. : SET BUILDING BLOCK IDENTIFIER	SC001500 86410001 <hex>	
	ET=+ UT=+00.00.01	SEND_DRCU_COMMAND_RAW SEND_DRCU_COMMAND Command Parameter(s) : DRCUCOMMAND SPD4N505 OVERRIDE SPD9N505 Subsch. ID : 370 Det. descr. : SEND A SINGLE COMMAND TO THE DRCU	SCD06505 91c3ffff <hex> 0 <hex> (Def)	

Lifeboat EngREDYtoSPEC_STBY
 File: H_CRP_SPI_R2SP.xls
 Author: R. Biggins



Step No.	Time	Activity/Remarks	TC/TLM	Display/ Branch
	ET=+ UT=+00.00.01	SEND_DRCU_COMMAND_RAW SEND_DRCU_COMMAND Command Parameter(s) : DRCUCOMMAND SPD4N505 OVERRIDE SPD9N505 Subsch. ID : 370 Det. descr. : SEND A SINGLE COMMAND TO THE DRCU	SCD06505 91c20025 <hex> 0 <hex> (Def)	
	ET=+ UT=+00.00.01	SEND_DRCU_COMMAND_RAW SEND_DRCU_COMMAND Command Parameter(s) : DRCUCOMMAND SPD4N505 OVERRIDE SPD9N505 Subsch. ID : 370 Det. descr. : SEND A SINGLE COMMAND TO THE DRCU	SCD06505 91c10000 <hex> 0 <hex> (Def)	
	ET=+ UT=+00.00.01	SET_BBID SET_BBID Command Parameter(s) : BUILDING_BLOCK_ID SP01N500 Subsch. ID : 370 Det. descr. : SET BUILDING BLOCK IDENTIFIER	SC001500 86420001 <hex>	
	ET=+ UT=+00.00.01	DISABLE_SELECTION DISABLE_SELECTION Command Parameter(s) : FRAMEID_DISABLESELECTION SPD2N505 Subsch. ID : 370 Det. descr. : DISABLE SELECTION OF DATA FROM SCIENCE FRAME	SCD05505 10 <hex>	
	ET=+ UT=+00.00.01	SET_TABLE SET_TABLE Command Parameter(s) : TABLEID_SETTAB SPB0N500 TABLESIZE_SETTAB SPB1N500 Subsch. ID : 370 Det. descr. : SET SPACE FOR A TABLE	SCB00500 a <hex> c <hex>	

Lifeboat EngREDYtoSPEC_STBY
 File: H_CRP_SPI_R2SP.xls
 Author: R. Biggins



Step No.	Time	Activity/Remarks	TC/TLM	Display/ Branch
	ET=+ UT=+00.00.01	UPDATE_TABLE UPDATE_TABLE Command Parameter(s) : TABLEID_UPDTAB SPB5N500 INDEX_UPDTAB SPB6N500 N_UPDTAB SPB7N500 DATA_UPDTAB SPB8N500 DATA_UPDTAB SPB8N500 DATA_UPDTAB SPB8N500 DATA_UPDTAB SPB8N500 DATA_UPDTAB SPB8N500 DATA_UPDTAB SPB8N500 DATA_UPDTAB SPB8N500 DATA_UPDTAB SPB8N500 DATA_UPDTAB SPB8N500 DATA_UPDTAB SPB8N500 DATA_UPDTAB SPB8N500 DATA_UPDTAB SPB8N500 DATA_UPDTAB SPB8N500 Subsch. ID : 370 Det. descr. : UPDATE CONTENTS OF A TABLE	SCB02500	
	ET=+ UT=+00.00.01	ENABLE_SELECTION ENABLE_SELECTION Command Parameter(s) : FRAMEID_ENABLESELECTION SPD7N505 SELSID_ENABLESELECTION SPD8N505 TABLEID_ENABLESELECTION SPD1N505 Subsch. ID : 370 Det. descr. : ENABLE SELECTION OF DATA FROM SCIENCE FRAME	SCD04505	
	ET=+ UT=+00.00.01	SEND_DRCU_COMMAND_RAW SEND_DRCU_COMMAND Command Parameter(s) : DRCUCOMMAND SPD4N505 OVERRIDE SPD9N505 Subsch. ID : 370 Det. descr. : SEND A SINGLE COMMAND TO THE DRCU	SCD06505	
	ET=+ UT=+00.00.01	SEND_DRCU_COMMAND_RAW SEND_DRCU_COMMAND Command Parameter(s) : DRCUCOMMAND SPD4N505 OVERRIDE SPD9N505 Subsch. ID : 370 Det. descr. : SEND A SINGLE COMMAND TO THE DRCU	SCD06505	

Lifeboat EngREDYtoSPEC_STBY
 File: H_CRP_SPI_R2SP.xls
 Author: R. Biggins



Step No.	Time	Activity/Remarks	TC/TLM	Display/ Branch
	ET=+ UT=+00.00.01	SEND_DRCU_COMMAND_RAW SEND_DRCU_COMMAND Command Parameter(s) : DRCUCOMMAND SPD4N505 OVERRIDE SPD9N505 Subsch. ID : 370 Det. descr. : SEND A SINGLE COMMAND TO THE DRCU	SCD06505 91c10000 <hex> 0 <hex> (Def)	
	ET=+ UT=+00.00.01	SET_BBID SET_BBID Command Parameter(s) : BUILDING_BLOCK_ID SP01N500 Subsch. ID : 370 Det. descr. : SET BUILDING BLOCK IDENTIFIER	SC001500 86440001 <hex>	
	ET=+ UT=+00.00.01	SEND_DRCU_COMMAND_RAW SEND_DRCU_COMMAND Command Parameter(s) : DRCUCOMMAND SPD4N505 OVERRIDE SPD9N505 Subsch. ID : 370 Det. descr. : SEND A SINGLE COMMAND TO THE DRCU	SCD06505 a0830000 <hex> 0 <hex> (Def)	
	ET=+ UT=+00.00.01	SEND_DRCU_COMMAND_RAW SEND_DRCU_COMMAND Command Parameter(s) : DRCUCOMMAND SPD4N505 OVERRIDE SPD9N505 Subsch. ID : 370 Det. descr. : SEND A SINGLE COMMAND TO THE DRCU	SCD06505 a0820000 <hex> 0 <hex> (Def)	
	ET=+ UT=+00.00.01	SET_BBID_RAW SET_BBID Command Parameter(s) : BUILDING_BLOCK_ID SP01N500 Subsch. ID : 370 Det. descr. : SET BUILDING BLOCK IDENTIFIER	SC001500 864a0001 <hex>	
	ET=+ UT=+00.00.01	EXECUTE_COMMAND_LIST_RAW EXECUTE_COMMAND_LIST Command Parameter(s) : N_EXECCL SPC0N500 DATA_EXECCL SPC1N500 DATA_EXECCL SPC1N500 Subsch. ID : 370 Det. descr. : EXECUTE COMMAND LIST HELD IN TC PACKET	SCC00500 2 <hex> 58000002 <hex> 7f000000 <hex>	

Lifeboat EngREDYtoSPEC_STBY
 File: H_CRP_SPI_R2SP.xls
 Author: R. Biggins



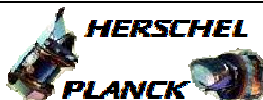
Step No.	Time	Activity/Remarks	TC/TLM	Display/ Branch
	ET=+ UT=+00.00.02	SEND_DRCU_COMMAND_RAW SEND_DRCU_COMMAND Command Parameter(s) : DRCUCOMMAND SPD4N505 OVERRIDE SPD9N505 Subsch. ID : 370 Det. descr. : SEND A SINGLE COMMAND TO THE DRCU	SCD06505 a0ca0000 <hex> 0 <hex> (Def)	
	ET=+ UT=+00.00.01	SEND_DRCU_COMMAND_RAW SEND_DRCU_COMMAND Command Parameter(s) : DRCUCOMMAND SPD4N505 OVERRIDE SPD9N505 Subsch. ID : 370 Det. descr. : SEND A SINGLE COMMAND TO THE DRCU	SCD06505 a0cc0000 <hex> 0 <hex> (Def)	
	ET=+ UT=+00.02.02	SET_BBID SET_BBID Command Parameter(s) : BUILDING_BLOCK_ID SP01N500 Subsch. ID : 370 Det. descr. : SET BUILDING BLOCK IDENTIFIER	SC001500 86430001 <hex>	
	ET=+ UT=+00.00.01	SEND_DRCU_COMMAND_RAW SEND_DRCU_COMMAND Command Parameter(s) : DRCUCOMMAND SPD4N505 OVERRIDE SPD9N505 Subsch. ID : 370 Det. descr. : SEND A SINGLE COMMAND TO THE DRCU	SCD06505 843e0000 <hex> 0 <hex> (Def)	
	ET=+ UT=+00.00.01	SEND_DRCU_COMMAND_RAW SEND_DRCU_COMMAND Command Parameter(s) : DRCUCOMMAND SPD4N505 OVERRIDE SPD9N505 Subsch. ID : 370 Det. descr. : SEND A SINGLE COMMAND TO THE DRCU	SCD06505 843c0004 <hex> 0 <hex> (Def)	
	ET=+ UT=+00.00.01	SEND_DRCU_COMMAND_RAW SEND_DRCU_COMMAND Command Parameter(s) : DRCUCOMMAND SPD4N505 OVERRIDE SPD9N505 Subsch. ID : 370 Det. descr. : SEND A SINGLE COMMAND TO THE DRCU	SCD06505 843d0000 <hex> 0 <hex> (Def)	

Lifeboat EngREDYtoSPEC_STBY
 File: H_CRP_SPI_R2SP.xls
 Author: R. Biggins



Step No.	Time	Activity/Remarks	TC/TLM	Display/ Branch
	ET=+ UT=+00.00.01	SEND_DRCU_COMMAND_RAW SEND_DRCU_COMMAND Command Parameter(s) : DRCUCOMMAND SPD4N505 OVERRIDE SPD9N505 Subsch. ID : 370 Det. descr. : SEND A SINGLE COMMAND TO THE DRCU	SCD06505 843e0000 <hex> 0 <hex> (Def)	
	ET=+ UT=+00.00.01	SET_BBID_RAW SET_BBID Command Parameter(s) : BUILDING_BLOCK_ID SP01N500 Subsch. ID : 370 Det. descr. : SET BUILDING BLOCK IDENTIFIER	SC001500 82130001 <hex>	
	ET=+ UT=+00.00.01	SET_OBS_STEP_RAW SET_OBS_STEP Command Parameter(s) : OBSERVATION_STEP SP03N500 Subsch. ID : 370 Det. descr. : SET OBSERVATION STEP	SC003500 0 <hex>	
	ET=+ UT=+00.00.01	SEND_DRCU_COMMAND_RAW SEND_DRCU_COMMAND Command Parameter(s) : DRCUCOMMAND SPD4N505 OVERRIDE SPD9N505 Subsch. ID : 370 Det. descr. : SEND A SINGLE COMMAND TO THE DRCU	SCD06505 91c10000 <hex> 0 <hex> (Def)	
	ET=+ UT=+00.00.01	SEND_DRCU_COMMAND_RAW SEND_DRCU_COMMAND Command Parameter(s) : DRCUCOMMAND SPD4N505 OVERRIDE SPD9N505 Subsch. ID : 370 Det. descr. : SEND A SINGLE COMMAND TO THE DRCU	SCD06505 91c20000 <hex> 0 <hex> (Def)	
	ET=+ UT=+00.00.01	SEND_DRCU_COMMAND_RAW SEND_DRCU_COMMAND Command Parameter(s) : DRCUCOMMAND SPD4N505 OVERRIDE SPD9N505 Subsch. ID : 370 Det. descr. : SEND A SINGLE COMMAND TO THE DRCU	SCD06505 91c00000 <hex> 0 <hex> (Def)	

Lifeboat EngREDYtoSPEC_STBY
 File: H_CRP_SPI_R2SP.xls
 Author: R. Biggins



Step No.	Time	Activity/Remarks	TC/TLM	Display/ Branch
	ET=+ UT=+00.00.01	FLUSH_FIFO FLUSH_FIFO Command Parameter(s) : FIFOFLAGS SPD0N505 Subsch. ID : 370 Det. descr. : FORCE DPU TO READ SCIENCE DATA FROM FIFOS AND FLUSH CONTENTS	SCD01505 2000 <hex>	
	ET=+ UT=+00.00.01	SEND_DRCU_COMMAND_RAW SEND_DRCU_COMMAND Command Parameter(s) : DRCUCOMMAND SPD4N505 OVERRIDE SPD9N505 Subsch. ID : 370 Det. descr. : SEND A SINGLE COMMAND TO THE DRCU	SCD06505 91c40013 <hex> 0 <hex> (Def)	
	ET=+ UT=+00.00.01	SEND_DRCU_COMMAND_RAW SEND_DRCU_COMMAND Command Parameter(s) : DRCUCOMMAND SPD4N505 OVERRIDE SPD9N505 Subsch. ID : 370 Det. descr. : SEND A SINGLE COMMAND TO THE DRCU	SCD06505 91c3ffff <hex> 0 <hex> (Def)	
	ET=+ UT=+00.00.01	SEND_DRCU_COMMAND_RAW SEND_DRCU_COMMAND Command Parameter(s) : DRCUCOMMAND SPD4N505 OVERRIDE SPD9N505 Subsch. ID : 370 Det. descr. : SEND A SINGLE COMMAND TO THE DRCU	SCD06505 91c10001 <hex> 0 <hex> (Def)	
	ET=+ UT=+00.00.01	SEND_DRCU_COMMAND_RAW SEND_DRCU_COMMAND Command Parameter(s) : DRCUCOMMAND SPD4N505 OVERRIDE SPD9N505 Subsch. ID : 370 Det. descr. : SEND A SINGLE COMMAND TO THE DRCU	SCD06505 90471482 <hex> 0 <hex> (Def)	
	ET=+ UT=+00.00.01	SEND_DRCU_COMMAND_RAW SEND_DRCU_COMMAND Command Parameter(s) : DRCUCOMMAND SPD4N505 OVERRIDE SPD9N505 Subsch. ID : 370 Det. descr. : SEND A SINGLE COMMAND TO THE DRCU	SCD06505 90561482 <hex> 0 <hex> (Def)	

Lifeboat EngREDYtoSPEC_STBY
 File: H_CRP_SPI_R2SP.xls
 Author: R. Biggins



Step No.	Time	Activity/Remarks	TC/TLM	Display/ Branch
	ET=+ UT=+00.00.01	SEND_DRCU_COMMAND_RAW SEND_DRCU_COMMAND Command Parameter(s) : DRCUCOMMAND SPD4N505 OVERRIDE SPD9N505 Subsch. ID : 370 Det. descr. : SEND A SINGLE COMMAND TO THE DRCU	SCD06505 90588000 <hex> 0 <hex> (Def)	
	ET=+ UT=+00.00.01	SEND_DRCU_COMMAND_RAW SEND_DRCU_COMMAND Command Parameter(s) : DRCUCOMMAND SPD4N505 OVERRIDE SPD9N505 Subsch. ID : 370 Det. descr. : SEND A SINGLE COMMAND TO THE DRCU	SCD06505 905a8000 <hex> 0 <hex> (Def)	
	ET=+ UT=+00.00.01	SEND_DRCU_COMMAND_RAW SEND_DRCU_COMMAND Command Parameter(s) : DRCUCOMMAND SPD4N505 OVERRIDE SPD9N505 Subsch. ID : 370 Det. descr. : SEND A SINGLE COMMAND TO THE DRCU	SCD06505 90490000 <hex> 0 <hex> (Def)	
	ET=+ UT=+00.00.01	SEND_DRCU_COMMAND_RAW SEND_DRCU_COMMAND Command Parameter(s) : DRCUCOMMAND SPD4N505 OVERRIDE SPD9N505 Subsch. ID : 370 Det. descr. : SEND A SINGLE COMMAND TO THE DRCU	SCD06505 90450bb8 <hex> 0 <hex> (Def)	
	ET=+ UT=+00.00.01	SEND_DRCU_COMMAND_RAW SEND_DRCU_COMMAND Command Parameter(s) : DRCUCOMMAND SPD4N505 OVERRIDE SPD9N505 Subsch. ID : 370 Det. descr. : SEND A SINGLE COMMAND TO THE DRCU	SCD06505 90490001 <hex> 0 <hex> (Def)	
	ET=+ UT=+00.00.24	SEND_DRCU_COMMAND_RAW SEND_DRCU_COMMAND Command Parameter(s) : DRCUCOMMAND SPD4N505 OVERRIDE SPD9N505 Subsch. ID : 370 Det. descr. : SEND A SINGLE COMMAND TO THE DRCU	SCD06505 90490000 <hex> 0 <hex> (Def)	

Lifeboat EngREDYtoSPEC_STBY
 File: H_CRP_SPI_R2SP.xls
 Author: R. Biggins



Step No.	Time	Activity/Remarks	TC/TLM	Display/ Branch
	ET=+ UT=+00.00.01	SEND_DRCU_COMMAND_RAW SEND_DRCU_COMMAND Command Parameter(s) : DRCUCOMMAND SPD4N505 OVERRIDE SPD9N505 Subsch. ID : 370 Det. descr. : SEND A SINGLE COMMAND TO THE DRCU	SCD06505 90460bb8 <hex> 0 <hex> (Def)	
	ET=+ UT=+00.00.01	SEND_DRCU_COMMAND_RAW SEND_DRCU_COMMAND Command Parameter(s) : DRCUCOMMAND SPD4N505 OVERRIDE SPD9N505 Subsch. ID : 370 Det. descr. : SEND A SINGLE COMMAND TO THE DRCU	SCD06505 90450fa0 <hex> 0 <hex> (Def)	
	ET=+ UT=+00.00.01	SEND_DRCU_COMMAND_RAW SEND_DRCU_COMMAND Command Parameter(s) : DRCUCOMMAND SPD4N505 OVERRIDE SPD9N505 Subsch. ID : 370 Det. descr. : SEND A SINGLE COMMAND TO THE DRCU	SCD06505 90480004 <hex> 0 <hex> (Def)	
	ET=+ UT=+00.00.01	RUN_VM1 RUN_VM1 Command Parameter(s) : TABLEID_RUNVM1 SPV4N500 INDEX_RUNVM1 SPV5N500 N_RUNVM1 SPV6N500 DATA_RUNVM1 SPV7N500 DATA_RUNVM1 SPV7N500 Subsch. ID : 370 Det. descr. : EXECUTE COMMAND LIST HELD IN A TABLE BY S/W DRIVEN VM1	SCV02500 4b <hex> 0 <hex> 2 <dec> 80 <dec> 100000 <dec>	
	ET=+ UT=+00.00.10	SEND_DRCU_COMMAND_RAW SEND_DRCU_COMMAND Command Parameter(s) : DRCUCOMMAND SPD4N505 OVERRIDE SPD9N505 Subsch. ID : 370 Det. descr. : SEND A SINGLE COMMAND TO THE DRCU	SCD06505 904d0000 <hex> 0 <hex> (Def)	

Lifeboat EngREDYtoSPEC_STBY
 File: H_CRP_SPI_R2SP.xls
 Author: R. Biggins



Step No.	Time	Activity/Remarks	TC/TLM	Display/ Branch
	ET=+ UT=+00.00.02	SEND_DRCU_COMMAND_RAW SEND_DRCU_COMMAND Command Parameter(s) : DRCUCOMMAND SPD4N505 OVERRIDE SPD9N505 Subsch. ID : 370 Det. descr. : SEND A SINGLE COMMAND TO THE DRCU	SCD06505 90490000 <hex> 0 <hex> (Def)	
	ET=+ UT=+00.00.01	SEND_DRCU_COMMAND_RAW SEND_DRCU_COMMAND Command Parameter(s) : DRCUCOMMAND SPD4N505 OVERRIDE SPD9N505 Subsch. ID : 370 Det. descr. : SEND A SINGLE COMMAND TO THE DRCU	SCD06505 90450000 <hex> 0 <hex> (Def)	
	ET=+ UT=+00.00.01	SEND_DRCU_COMMAND_RAW SEND_DRCU_COMMAND Command Parameter(s) : DRCUCOMMAND SPD4N505 OVERRIDE SPD9N505 Subsch. ID : 370 Det. descr. : SEND A SINGLE COMMAND TO THE DRCU	SCD06505 90490001 <hex> 0 <hex> (Def)	
	ET=+ UT=+00.00.10	SEND_DRCU_COMMAND_RAW SEND_DRCU_COMMAND Command Parameter(s) : DRCUCOMMAND SPD4N505 OVERRIDE SPD9N505 Subsch. ID : 370 Det. descr. : SEND A SINGLE COMMAND TO THE DRCU	SCD06505 90490004 <hex> 0 <hex> (Def)	
	ET=+ UT=+00.00.01	SEND_DRCU_COMMAND_RAW SEND_DRCU_COMMAND Command Parameter(s) : DRCUCOMMAND SPD4N505 OVERRIDE SPD9N505 Subsch. ID : 370 Det. descr. : SEND A SINGLE COMMAND TO THE DRCU	SCD06505 90490001 <hex> 0 <hex> (Def)	
	ET=+ UT=+00.00.01	SEND_DRCU_COMMAND_RAW SEND_DRCU_COMMAND Command Parameter(s) : DRCUCOMMAND SPD4N505 OVERRIDE SPD9N505 Subsch. ID : 370 Det. descr. : SEND A SINGLE COMMAND TO THE DRCU	SCD06505 904b07d0 <hex> 0 <hex> (Def)	

Lifeboat EngREDYtoSPEC_STBY
 File: H_CRP_SPI_R2SP.xls
 Author: R. Biggins



Step No.	Time	Activity/Remarks	TC/TLM	Display/ Branch
	ET=+ UT=+00.00.01	SEND_DRCU_COMMAND_RAW SEND_DRCU_COMMAND Command Parameter(s) : DRCUCOMMAND SPD4N505 OVERRIDE SPD9N505 Subsch. ID : 370 Det. descr. : SEND A SINGLE COMMAND TO THE DRCU	SCD06505 904a07d0 <hex> 0 <hex> (Def)	
	ET=+ UT=+00.00.01	SEND_DRCU_COMMAND_RAW SEND_DRCU_COMMAND Command Parameter(s) : DRCUCOMMAND SPD4N505 OVERRIDE SPD9N505 Subsch. ID : 370 Det. descr. : SEND A SINGLE COMMAND TO THE DRCU	SCD06505 90440001 <hex> 0 <hex> (Def)	
	ET=+ UT=+00.00.02	SEND_DRCU_COMMAND_RAW SEND_DRCU_COMMAND Command Parameter(s) : DRCUCOMMAND SPD4N505 OVERRIDE SPD9N505 Subsch. ID : 370 Det. descr. : SEND A SINGLE COMMAND TO THE DRCU	SCD06505 90450064 <hex> 0 <hex> (Def)	
	ET=+ UT=+00.00.04	RUN_VM1 RUN_VM1 Command Parameter(s) : TABLEID_RUNVM1 SPV4N500 INDEX_RUNVM1 SPV5N500 N_RUNVM1 SPV6N500 DATA_RUNVM1 SPV7N500 DATA_RUNVM1 SPV7N500 DATA_RUNVM1 SPV7N500 Subsch. ID : 370 Det. descr. : EXECUTE COMMAND LIST HELD IN A TABLE BY S/W DRIVEN VM1	SCV02500 4b <hex> 1 <hex> 3 <dec> 100 <dec> 20 <dec> 1000 <dec>	
	ET=+ UT=+00.00.10	SEND_DRCU_COMMAND_RAW SEND_DRCU_COMMAND Command Parameter(s) : DRCUCOMMAND SPD4N505 OVERRIDE SPD9N505 Subsch. ID : 370 Det. descr. : SEND A SINGLE COMMAND TO THE DRCU	SCD06505 90490000 <hex> 0 <hex> (Def)	

Lifeboat EngREDYtoSPEC_STBY
 File: H_CRP_SPI_R2SP.xls
 Author: R. Biggins



Step No.	Time	Activity/Remarks	TC/TLM	Display/ Branch
	ET=+ UT=+00.00.01	SEND_DRCU_COMMAND_RAW SEND_DRCU_COMMAND Command Parameter(s) : DRCUCOMMAND SPD4N505 OVERRIDE SPD9N505 Subsch. ID : 370 Det. descr. : SEND A SINGLE COMMAND TO THE DRCU	SCD06505 90471482 <hex> 0 <hex> (Def)	
	ET=+ UT=+00.00.01	SEND_DRCU_COMMAND_RAW SEND_DRCU_COMMAND Command Parameter(s) : DRCUCOMMAND SPD4N505 OVERRIDE SPD9N505 Subsch. ID : 370 Det. descr. : SEND A SINGLE COMMAND TO THE DRCU	SCD06505 90561482 <hex> 0 <hex> (Def)	
	ET=+ UT=+00.00.01	SEND_DRCU_COMMAND_RAW SEND_DRCU_COMMAND Command Parameter(s) : DRCUCOMMAND SPD4N505 OVERRIDE SPD9N505 Subsch. ID : 370 Det. descr. : SEND A SINGLE COMMAND TO THE DRCU	SCD06505 9045189c <hex> 0 <hex> (Def)	
	ET=+ UT=+00.00.01	SEND_DRCU_COMMAND_RAW SEND_DRCU_COMMAND Command Parameter(s) : DRCUCOMMAND SPD4N505 OVERRIDE SPD9N505 Subsch. ID : 370 Det. descr. : SEND A SINGLE COMMAND TO THE DRCU	SCD06505 90490001 <hex> 0 <hex> (Def)	
	ET=+ UT=+00.00.14	SEND_DRCU_COMMAND_RAW SEND_DRCU_COMMAND Command Parameter(s) : DRCUCOMMAND SPD4N505 OVERRIDE SPD9N505 Subsch. ID : 370 Det. descr. : SEND A SINGLE COMMAND TO THE DRCU	SCD06505 90490000 <hex> 0 <hex> (Def)	
	ET=+ UT=+00.00.04	SEND_DRCU_COMMAND_RAW SEND_DRCU_COMMAND Command Parameter(s) : DRCUCOMMAND SPD4N505 OVERRIDE SPD9N505 Subsch. ID : 370 Det. descr. : SEND A SINGLE COMMAND TO THE DRCU	SCD06505 91c10000 <hex> 0 <hex> (Def)	

Lifeboat EngREDYtoSPEC_STBY
File: H_CRP_SPI_R2SP.xls
Author: R. Biggins



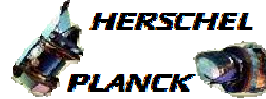
Step No.	Time	Activity/Remarks	TC/TLM	Display/ Branch
	ET=+ UT=+00.00.02	FLUSH_FIFO FLUSH_FIFO Command Parameter(s) : FIFOFLAGS SPD0N505 Subsch. ID : 370 Det. descr. : FORCE DPU TO READ SCIENCE DATA FROM FIFOS AND FLUSH CONTENTS	SCD01505 2000 <hex>	
	ET=+ UT=+00.00.01	SEND_DRCU_COMMAND_RAW SEND_DRCU_COMMAND Command Parameter(s) : DRCUCOMMAND SPD4N505 OVERRIDE SPD9N505 Subsch. ID : 370 Det. descr. : SEND A SINGLE COMMAND TO THE DRCU	SCD06505 91c40000 <hex> 0 <hex> (Def)	
	ET=+ UT=+00.00.01	SEND_DRCU_COMMAND_RAW SEND_DRCU_COMMAND Command Parameter(s) : DRCUCOMMAND SPD4N505 OVERRIDE SPD9N505 Subsch. ID : 370 Det. descr. : SEND A SINGLE COMMAND TO THE DRCU	SCD06505 91c3ffff <hex> 0 <hex> (Def)	
	ET=+ UT=+00.00.01	SEND_DRCU_COMMAND_RAW SEND_DRCU_COMMAND Command Parameter(s) : DRCUCOMMAND SPD4N505 OVERRIDE SPD9N505 Subsch. ID : 370 Det. descr. : SEND A SINGLE COMMAND TO THE DRCU	SCD06505 91c20025 <hex> 0 <hex> (Def)	
	ET=+ UT=+00.00.01	SEND_DRCU_COMMAND_RAW SEND_DRCU_COMMAND Command Parameter(s) : DRCUCOMMAND SPD4N505 OVERRIDE SPD9N505 Subsch. ID : 370 Det. descr. : SEND A SINGLE COMMAND TO THE DRCU	SCD06505 91c10000 <hex> 0 <hex> (Def)	
	ET=+ UT=+00.00.01	DISABLE_SELECTION DISABLE_SELECTION Command Parameter(s) : FRAMEID_DISABLESELECTION SPD2N505 Subsch. ID : 370 Det. descr. : DISABLE SELECTION OF DATA FROM SCIENCE FRAME	SCD05505 10 <hex>	

Lifeboat EngREDYtoSPEC_STBY
 File: H_CRP_SPI_R2SP.xls
 Author: R. Biggins



Step No.	Time	Activity/Remarks	TC/TLM	Display/ Branch
	ET=+ UT=+00.00.01	SEND_DRCU_COMMAND_RAW SEND_DRCU_COMMAND Command Parameter(s) : DRCUCOMMAND SPD4N505 OVERRIDE SPD9N505 Subsch. ID : 370 Det. descr. : SEND A SINGLE COMMAND TO THE DRCU	SCD06505 91c00095 <hex> 0 <hex> (Def)	
	ET=+ UT=+00.00.01	SEND_DRCU_COMMAND_RAW SEND_DRCU_COMMAND Command Parameter(s) : DRCUCOMMAND SPD4N505 OVERRIDE SPD9N505 Subsch. ID : 370 Det. descr. : SEND A SINGLE COMMAND TO THE DRCU	SCD06505 91c10000 <hex> 0 <hex> (Def)	
	ET=+ UT=+00.00.01	SET_BBID SET_BBID Command Parameter(s) : BUILDING_BLOCK_ID SP01N500 Subsch. ID : 370 Det. descr. : SET BUILDING BLOCK IDENTIFIER	SC001500 b6d00001 <hex>	
	ET=+ UT=+00.00.01	SEND_DRCU_COMMAND_RAW SEND_DRCU_COMMAND Command Parameter(s) : DRCUCOMMAND SPD4N505 OVERRIDE SPD9N505 Subsch. ID : 370 Det. descr. : SEND A SINGLE COMMAND TO THE DRCU	SCD06505 84390079 <hex> 0 <hex> (Def)	
	ET=+ UT=+00.00.01	SEND_DRCU_COMMAND_RAW SEND_DRCU_COMMAND Command Parameter(s) : DRCUCOMMAND SPD4N505 OVERRIDE SPD9N505 Subsch. ID : 370 Det. descr. : SEND A SINGLE COMMAND TO THE DRCU	SCD06505 84380001 <hex> 0 <hex> (Def)	
	ET=+ UT=+00.00.01	SEND_DRCU_COMMAND_RAW SEND_DRCU_COMMAND Command Parameter(s) : DRCUCOMMAND SPD4N505 OVERRIDE SPD9N505 Subsch. ID : 370 Det. descr. : SEND A SINGLE COMMAND TO THE DRCU	SCD06505 843c0004 <hex> 0 <hex> (Def)	

Lifeboat EngREDYtoSPEC_STBY
 File: H_CRP_SPI_R2SP.xls
 Author: R. Biggins



Step No.	Time	Activity/Remarks	TC/TLM	Display/ Branch
	ET=+ UT=+00.00.01	SEND_DRCU_COMMAND_RAW SEND_DRCU_COMMAND Command Parameter(s) : DRCUCOMMAND SPD4N505 OVERRIDE SPD9N505 Subsch. ID : 370 Det. descr. : SEND A SINGLE COMMAND TO THE DRCU	SCD06505 843a0084 <hex> 0 <hex> (Def)	
	ET=+ UT=+00.00.01	SEND_DRCU_COMMAND_RAW SEND_DRCU_COMMAND Command Parameter(s) : DRCUCOMMAND SPD4N505 OVERRIDE SPD9N505 Subsch. ID : 370 Det. descr. : SEND A SINGLE COMMAND TO THE DRCU	SCD06505 843b0087 <hex> 0 <hex> (Def)	
	ET=+ UT=+00.00.01	SEND_DRCU_COMMAND_RAW SEND_DRCU_COMMAND Command Parameter(s) : DRCUCOMMAND SPD4N505 OVERRIDE SPD9N505 Subsch. ID : 370 Det. descr. : SEND A SINGLE COMMAND TO THE DRCU	SCD06505 84310034 <hex> 0 <hex> (Def)	
	ET=+ UT=+00.00.01	SEND_DRCU_COMMAND_RAW SEND_DRCU_COMMAND Command Parameter(s) : DRCUCOMMAND SPD4N505 OVERRIDE SPD9N505 Subsch. ID : 370 Det. descr. : SEND A SINGLE COMMAND TO THE DRCU	SCD06505 8432002d <hex> 0 <hex> (Def)	
	ET=+ UT=+00.00.01	SEND_DRCU_COMMAND_RAW SEND_DRCU_COMMAND Command Parameter(s) : DRCUCOMMAND SPD4N505 OVERRIDE SPD9N505 Subsch. ID : 370 Det. descr. : SEND A SINGLE COMMAND TO THE DRCU	SCD06505 91c00095 <hex> 0 <hex> (Def)	
	ET=+ UT=+00.00.01	SEND_DRCU_COMMAND_RAW SEND_DRCU_COMMAND Command Parameter(s) : DRCUCOMMAND SPD4N505 OVERRIDE SPD9N505 Subsch. ID : 370 Det. descr. : SEND A SINGLE COMMAND TO THE DRCU	SCD06505 91c20253 <hex> 0 <hex> (Def)	

Lifeboat EngREDYtoSPEC_STBY
 File: H_CRP_SPI_R2SP.xls
 Author: R. Biggins



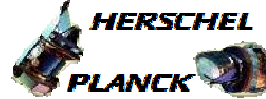
Step No.	Time	Activity/Remarks	TC/TLM	Display/ Branch
	ET=+ UT=+00.00.01	SEND_DRCU_COMMAND_RAW SEND_DRCU_COMMAND Command Parameter(s) : DRCUCOMMAND SPD4N505 OVERRIDE SPD9N505 Subsch. ID : 370 Det. descr. : SEND A SINGLE COMMAND TO THE DRCU	SCD06505 a0830000 <hex> 0 <hex> (Def)	
	ET=+ UT=+00.00.01	SEND_DRCU_COMMAND_RAW SEND_DRCU_COMMAND Command Parameter(s) : DRCUCOMMAND SPD4N505 OVERRIDE SPD9N505 Subsch. ID : 370 Det. descr. : SEND A SINGLE COMMAND TO THE DRCU	SCD06505 843d0000 <hex> 0 <hex> (Def)	
	ET=+ UT=+00.00.01	SET_BBID_RAW SET_BBID Command Parameter(s) : BUILDING_BLOCK_ID SP01N500 Subsch. ID : 370 Det. descr. : SET BUILDING BLOCK IDENTIFIER	SC001500 b6c20001 <hex>	
	ET=+ UT=+00.00.01	SEND_DRCU_COMMAND_RAW SEND_DRCU_COMMAND Command Parameter(s) : DRCUCOMMAND SPD4N505 OVERRIDE SPD9N505 Subsch. ID : 370 Det. descr. : SEND A SINGLE COMMAND TO THE DRCU	SCD06505 90490000 <hex> 0 <hex> (Def)	
	ET=+ UT=+00.00.01	SEND_DRCU_COMMAND_RAW SEND_DRCU_COMMAND Command Parameter(s) : DRCUCOMMAND SPD4N505 OVERRIDE SPD9N505 Subsch. ID : 370 Det. descr. : SEND A SINGLE COMMAND TO THE DRCU	SCD06505 90471482 <hex> 0 <hex> (Def)	
	ET=+ UT=+00.00.01	SEND_DRCU_COMMAND_RAW SEND_DRCU_COMMAND Command Parameter(s) : DRCUCOMMAND SPD4N505 OVERRIDE SPD9N505 Subsch. ID : 370 Det. descr. : SEND A SINGLE COMMAND TO THE DRCU	SCD06505 90561482 <hex> 0 <hex> (Def)	

Lifeboat EngREDYtoSPEC_STBY
 File: H_CRP_SPI_R2SP.xls
 Author: R. Biggins



Step No.	Time	Activity/Remarks	TC/TLM	Display/ Branch
	ET=+ UT=+00.00.01	SEND_DRCU_COMMAND_RAW SEND_DRCU_COMMAND Command Parameter(s) : DRCUCOMMAND SPD4N505 OVERRIDE SPD9N505 Subsch. ID : 370 Det. descr. : SEND A SINGLE COMMAND TO THE DRCU	SCD06505 90450dac <hex> 0 <hex> (Def)	
	ET=+ UT=+00.00.01	SEND_DRCU_COMMAND_RAW SEND_DRCU_COMMAND Command Parameter(s) : DRCUCOMMAND SPD4N505 OVERRIDE SPD9N505 Subsch. ID : 370 Det. descr. : SEND A SINGLE COMMAND TO THE DRCU	SCD06505 90490001 <hex> 0 <hex> (Def)	
	ET=+ UT=+00.00.08	SEND_DRCU_COMMAND_RAW SEND_DRCU_COMMAND Command Parameter(s) : DRCUCOMMAND SPD4N505 OVERRIDE SPD9N505 Subsch. ID : 370 Det. descr. : SEND A SINGLE COMMAND TO THE DRCU	SCD06505 90490000 <hex> 0 <hex> (Def)	
	ET=+ UT=+00.00.01	SET_BBID SET_BBID Command Parameter(s) : BUILDING_BLOCK_ID SP01N500 Subsch. ID : 370 Det. descr. : SET BUILDING BLOCK IDENTIFIER	SC001500 86410002 <hex>	
	ET=+ UT=+00.00.01	SEND_DRCU_COMMAND_RAW SEND_DRCU_COMMAND Command Parameter(s) : DRCUCOMMAND SPD4N505 OVERRIDE SPD9N505 Subsch. ID : 370 Det. descr. : SEND A SINGLE COMMAND TO THE DRCU	SCD06505 91c20253 <hex> 0 <hex> (Def)	
	ET=+ UT=+00.00.01	SET_BBID SET_BBID Command Parameter(s) : BUILDING_BLOCK_ID SP01N500 Subsch. ID : 370 Det. descr. : SET BUILDING BLOCK IDENTIFIER	SC001500 86420002 <hex>	

Lifeboat EngREDYtoSPEC_STBY
 File: H_CRP_SPI_R2SP.xls
 Author: R. Biggins



Step No.	Time	Activity/Remarks	TC/TLM	Display/ Branch
	ET=+ UT=+00.00.01	SEND_DRCU_COMMAND_RAW SEND_DRCU_COMMAND Command Parameter(s) : DRCUCOMMAND SPD4N505 OVERRIDE SPD9N505 Subsch. ID : 370 Det. descr. : SEND A SINGLE COMMAND TO THE DRCU	SCD06505 91c00095 <hex> 0 <hex> (Def)	
	ET=+ UT=+00.00.01	SET_BBID_RAW SET_BBID Command Parameter(s) : BUILDING_BLOCK_ID SP01N500 Subsch. ID : 370 Det. descr. : SET BUILDING BLOCK IDENTIFIER	SC001500 b6b90001 <hex>	
	ET=+ UT=+00.00.01	SET_OBS_STEP_RAW SET_OBS_STEP Command Parameter(s) : OBSERVATION_STEP SP03N500 Subsch. ID : 370 Det. descr. : SET OBSERVATION STEP	SC003500 0 <hex>	
	ET=+ UT=+00.00.01	RESET_FIFOS RESET_FIFOS Command Parameter(s) : RESETFLAGS SPDDN505 Subsch. ID : 370 Det. descr. : RESET FIFOS	SCD07505 7000 <hex>	
	ET=+ UT=+00.00.01	RUN_VM RUN_VM Command Parameter(s) : TABLEID_RUNVM SPV0N500 46 <hex> INDEX_RUNVM SPV1N500 0 <hex> N_RUNVM SPV2N500 9 <dec> DATA_RUNVM SPV3N500 4 <dec> DATA_RUNVM SPV3N500 2748 <dec> DATA_RUNVM SPV3N500 3 <dec> DATA_RUNVM SPV3N500 3000000 <dec> DATA_RUNVM SPV3N500 4 <dec> DATA_RUNVM SPV3N500 120 <dec> DATA_RUNVM SPV3N500 13152 <dec> DATA_RUNVM SPV3N500 0 <dec> DATA_RUNVM SPV3N500 0 <dec> Subsch. ID : 370 Det. descr. : EXECUTE COMMAND LIST HELD IN A TABLE BY INTERRUPT DRIVEN VM	SCV00500 46 <hex> 0 <hex> 9 <dec> 4 <dec> 2748 <dec> 3 <dec> 3000000 <dec> 4 <dec> 120 <dec> 13152 <dec> 0 <dec> 0 <dec>	

Lifeboat EngREDYtoSPEC_STBY
 File: H_CRP_SPI_R2SP.xls
 Author: R. Biggins



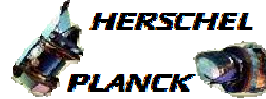
Step No.	Time	Activity/Remarks	TC/TLM	Display/ Branch
	ET=+ UT=+00.00.10	FLUSH_FIFO FLUSH_FIFO Command Parameter(s) : FIFOFLAGS SPD0N505 Subsch. ID : 370 Det. descr. : FORCE DPU TO READ SCIENCE DATA FROM FIFOS AND FLUSH CONTENTS	SCD01505 7000 <hex>	
	ET=+ UT=+00.00.02	SEND_DRCU_COMMAND_RAW SEND_DRCU_COMMAND Command Parameter(s) : DRCUCOMMAND SPD4N505 OVERRIDE SPD9N505 Subsch. ID : 370 Det. descr. : SEND A SINGLE COMMAND TO THE DRCU	SCD06505 a0c80000 <hex> 0 <hex> (Def)	
	ET=+ UT=+00.00.01	SEND_DRCU_COMMAND_RAW SEND_DRCU_COMMAND Command Parameter(s) : DRCUCOMMAND SPD4N505 OVERRIDE SPD9N505 Subsch. ID : 370 Det. descr. : SEND A SINGLE COMMAND TO THE DRCU	SCD06505 843d0000 <hex> 0 <hex> (Def)	
	ET=+ UT=+00.00.01	SET_BBID_RAW SET_BBID Command Parameter(s) : BUILDING_BLOCK_ID SP01N500 Subsch. ID : 370 Det. descr. : SET BUILDING BLOCK IDENTIFIER	SC001500 b6c30001 <hex>	
	ET=+ UT=+00.00.01	SET_BBID SET_BBID Command Parameter(s) : BUILDING_BLOCK_ID SP01N500 Subsch. ID : 370 Det. descr. : SET BUILDING BLOCK IDENTIFIER	SC001500 b6d00002 <hex>	
	ET=+ UT=+00.00.01	SEND_DRCU_COMMAND_RAW SEND_DRCU_COMMAND Command Parameter(s) : DRCUCOMMAND SPD4N505 OVERRIDE SPD9N505 Subsch. ID : 370 Det. descr. : SEND A SINGLE COMMAND TO THE DRCU	SCD06505 84390079 <hex> 0 <hex> (Def)	

Lifeboat EngREDYtoSPEC_STBY
 File: H_CRP_SPI_R2SP.xls
 Author: R. Biggins



Step No.	Time	Activity/Remarks	TC/TLM	Display/ Branch
	ET=+ UT=+00.00.01	SEND_DRCU_COMMAND_RAW SEND_DRCU_COMMAND Command Parameter(s) : DRCUCOMMAND SPD4N505 OVERRIDE SPD9N505 Subsch. ID : 370 Det. descr. : SEND A SINGLE COMMAND TO THE DRCU	SCD06505 84380001 <hex> 0 <hex> (Def)	
	ET=+ UT=+00.00.01	SEND_DRCU_COMMAND_RAW SEND_DRCU_COMMAND Command Parameter(s) : DRCUCOMMAND SPD4N505 OVERRIDE SPD9N505 Subsch. ID : 370 Det. descr. : SEND A SINGLE COMMAND TO THE DRCU	SCD06505 843c0004 <hex> 0 <hex> (Def)	
	ET=+ UT=+00.00.01	SEND_DRCU_COMMAND_RAW SEND_DRCU_COMMAND Command Parameter(s) : DRCUCOMMAND SPD4N505 OVERRIDE SPD9N505 Subsch. ID : 370 Det. descr. : SEND A SINGLE COMMAND TO THE DRCU	SCD06505 843a0084 <hex> 0 <hex> (Def)	
	ET=+ UT=+00.00.01	SEND_DRCU_COMMAND_RAW SEND_DRCU_COMMAND Command Parameter(s) : DRCUCOMMAND SPD4N505 OVERRIDE SPD9N505 Subsch. ID : 370 Det. descr. : SEND A SINGLE COMMAND TO THE DRCU	SCD06505 843b0087 <hex> 0 <hex> (Def)	
	ET=+ UT=+00.00.01	SEND_DRCU_COMMAND_RAW SEND_DRCU_COMMAND Command Parameter(s) : DRCUCOMMAND SPD4N505 OVERRIDE SPD9N505 Subsch. ID : 370 Det. descr. : SEND A SINGLE COMMAND TO THE DRCU	SCD06505 84310034 <hex> 0 <hex> (Def)	
	ET=+ UT=+00.00.01	SEND_DRCU_COMMAND_RAW SEND_DRCU_COMMAND Command Parameter(s) : DRCUCOMMAND SPD4N505 OVERRIDE SPD9N505 Subsch. ID : 370 Det. descr. : SEND A SINGLE COMMAND TO THE DRCU	SCD06505 8432002d <hex> 0 <hex> (Def)	

Lifeboat EngREDYtoSPEC_STBY
 File: H_CRP_SPI_R2SP.xls
 Author: R. Biggins



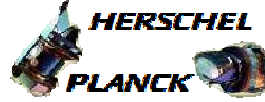
Step No.	Time	Activity/Remarks	TC/TLM	Display/ Branch
	ET=+ UT=+00.00.01	SEND_DRCU_COMMAND_RAW SEND_DRCU_COMMAND Command Parameter(s) : DRCUCOMMAND SPD4N505 OVERRIDE SPD9N505 Subsch. ID : 370 Det. descr. : SEND A SINGLE COMMAND TO THE DRCU	SCD06505 91c00095 <hex> 0 <hex> (Def)	
	ET=+ UT=+00.00.01	SEND_DRCU_COMMAND_RAW SEND_DRCU_COMMAND Command Parameter(s) : DRCUCOMMAND SPD4N505 OVERRIDE SPD9N505 Subsch. ID : 370 Det. descr. : SEND A SINGLE COMMAND TO THE DRCU	SCD06505 91c20025 <hex> 0 <hex> (Def)	
	ET=+ UT=+00.00.01	SEND_DRCU_COMMAND_RAW SEND_DRCU_COMMAND Command Parameter(s) : DRCUCOMMAND SPD4N505 OVERRIDE SPD9N505 Subsch. ID : 370 Det. descr. : SEND A SINGLE COMMAND TO THE DRCU	SCD06505 a0830000 <hex> 0 <hex> (Def)	
	ET=+ UT=+00.00.01	SEND_DRCU_COMMAND_RAW SEND_DRCU_COMMAND Command Parameter(s) : DRCUCOMMAND SPD4N505 OVERRIDE SPD9N505 Subsch. ID : 370 Det. descr. : SEND A SINGLE COMMAND TO THE DRCU	SCD06505 843d0000 <hex> 0 <hex> (Def)	
	ET=+ UT=+00.00.01	SET_BBID_RAW SET_BBID Command Parameter(s) : BUILDING_BLOCK_ID SP01N500 Subsch. ID : 370 Det. descr. : SET BUILDING BLOCK IDENTIFIER	SC001500 8d590001 <hex>	
	ET=+ UT=+00.00.01	SET_OBS_STEP_RAW SET_OBS_STEP Command Parameter(s) : OBSERVATION_STEP SP03N500 Subsch. ID : 370 Det. descr. : SET OBSERVATION STEP	SC003500 0 <hex>	

Lifeboat EngREDYtoSPEC_STBY
 File: H_CRP_SPI_R2SP.xls
 Author: R. Biggins



Step No.	Time	Activity/Remarks	TC/TLM	Display/ Branch
	ET=+ UT=+00.00.01	SEND_DRCU_COMMAND_RAW SEND_DRCU_COMMAND Command Parameter(s) : DRCUCOMMAND SPD4N505 OVERRIDE SPD9N505 Subsch. ID : 370 Det. descr. : SEND A SINGLE COMMAND TO THE DRCU	SCD06505 90440006 <hex> 0 <hex> (Def)	
10		Set default end conditions		Next Step: END
		Note that a TM(5,1) packet [New_Step_Report] is generated after each of the following SET_OBS_STEP telecommands		
	ET=+ UT=+00.00.01	SET_OBS_STEP SET_OBS_STEP Command Parameter(s) : OBSERVATION_STEP SP03N500 TC Control Flags : GBM IL DSE --Y -- --- Subsch. ID : 370 Det. descr. : SET OBSERVATION STEP	SC003500 0 <hex>	
	ET=+ UT=+00.00.01	SET_BBID SET_BBID Command Parameter(s) : BUILDING_BLOCK_ID SP01N500 Subsch. ID : 370 Det. descr. : SET BUILDING BLOCK IDENTIFIER	SC001500 80030001 <hex>	
	ET=+ UT=+00.00.01	SET_OBS_STEP SET_OBS_STEP Command Parameter(s) : OBSERVATION_STEP SP03N500 TC Control Flags : GBM IL DSE --Y -- --- Subsch. ID : 370 Det. descr. : SET OBSERVATION STEP	SC003500 1 <hex>	
	ET=+ UT=+00.00.01	SET_OBSID SET_OBSID Command Parameter(s) : OBSERVATION_ID SP00N500 Subsch. ID : 370 Det. descr. : SET OBSERVATION IDENTIFIER	SC000500 00000000 <hex>	

Lifeboat EngREDYtoSPEC_STBY
 File: H_CRP_SPI_R2SP.xls
 Author: R. Biggins



Step No.	Time	Activity/Remarks	TC/TLM	Display/ Branch
	ET=+ UT=+00.00.01	SET_OBS_STEP Command Parameter(s) : OBSERVATION_STEP SP03N500 TC Control Flags : GBM IL DSE --Y -- --- Subsch. ID : 370 Det. descr. : SET OBSERVATION STEP	SET_OBS_STEP SC003500 0 <hex>	
	ET=+ UT=+00.00.01	SET_BBID Command Parameter(s) : BUILDING_BLOCK_ID SP01N500 Subsch. ID : 370 Det. descr. : SET BUILDING BLOCK IDENTIFIER	SET_BBID SC001500 80000000 <hex>	
	ET=+ UT=+00.00.01	SET_BBID Command Parameter(s) : BUILDING_BLOCK_ID SP01N500 Subsch. ID : 370 Det. descr. : SET BUILDING BLOCK IDENTIFIER	SET_BBID SC001500 50000000 <hex>	
End of Procedure				