

SpireEngSlowPMDump Dump and Check Memory (CRP)
 File: H_CRP_SPI_DUMP.xls
 Author: R. Biggins



Procedure Summary

Objectives

This procedure dumps the DPU Program Memory slowly, at the rate of one TM(6,6) packet every two seconds. In this way SPIRE need not be PRIME instrument.

This procedure is intended for use during a DTCP, regardless which instrument is Prime.

Based on procedure:SpireEngSlowPMDump
 Generated by SPIRE ICC:04/08/2010

Summary of Constraints

This procedure requires 20 minutes. Ensure there is enough time to complete this procedure before the end of the pass; ie. Begin this procedure at least before LOS -20minutes.

The instrument should normally be in REDY mode before execution of this observation.

Spacecraft Configuration

Start of Procedure

SPIRE mode = REDY

End of Procedure

Reference File(s)

Input Command Sequences

Output Command Sequences

HRS DUMP

Referenced Displays

ANDs GRDs SLDs
 SA_7_559
 ZAZ90999
 SA_1_559

Configuration Control Information

| DATE | FOP ISSUE | VERSION | MODIFICATION DESCRIPTION | AUTHOR | SPR REF |
|------------|-----------|---------|------------------------------|------------|---------|
| 12/08/2010 | | 1 | Created | L.Lucas-hp | |
| 26/08/2010 | | 1.01 | Validation : Text updates | L.Lucas-hp | |
| 27/08/2010 | | 1.02 | Validation : More text added | L.Lucas-hp | |

SpireEngSlowPMDump Dump and Check Memory (CRP)
File: H_CRP_SPI_DUMP.xls
Author: R. Biggins

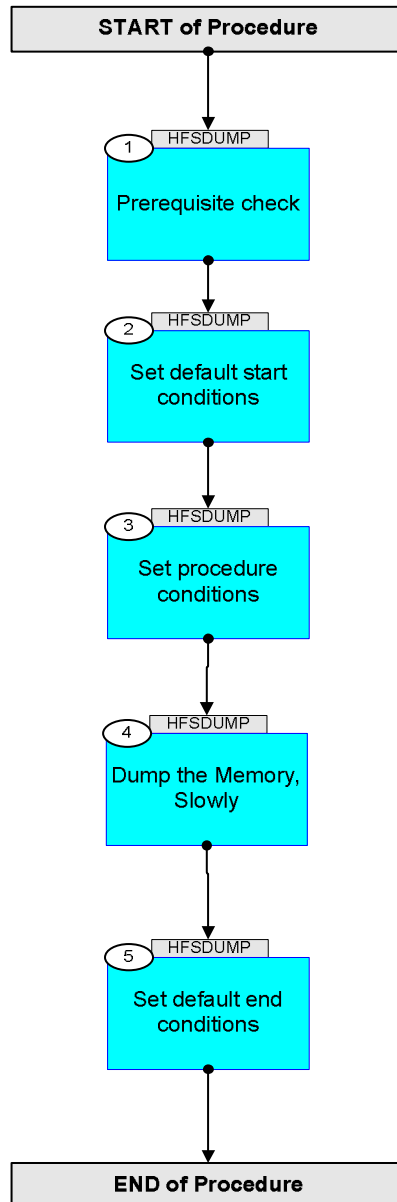


| | | | | | |
|------------|-----|------|---|------------|--|
| 31/08/2010 | | 1.03 | Validation : Removed some TM checks | L.Lucas-hp | |
| 11/11/2010 | | 1.04 | Validation : TM check updates | L.Lucas-hp | |
| 05/04/2011 | | 2 | Minimum delta between TCs updated to 1 second | R. Biggins | |
| 27/06/2011 | 3.1 | 2.01 | Validation : Flowchart updated | R. Biggins | |

SpireEngSlowPMDump Dump and Check Memory (CRP)
File: H_CRP_SPI_DUMP.xls
Author: R. Biggins



Procedure Flowchart Overview



SpireEngSlowPMDump Dump and Check Memory (CRP)
 File: H_CRP_SPI_DUMP.xls
 Author: R. Biggins



| Step No. | Time | Activity/Remarks | TC/TLM | Display/ Branch |
|---|----------------------|---|---|--------------------------|
| Beginning of Procedure | | | | |
| TC Seq. Name : HRS DUMP (SpireEngSlowPMDump) TimeTag Type: N Sub Schedule ID: <input type="checkbox"/> | | | | |
| 1 | | Prerequisite check | | Next Step: 2 |
| 1.1 | | HSC/ICC input | | <input type="checkbox"/> |
| | | If this procedure is being run in response to a contingency, that a SPIRE checksum has failed, use OBS_ID 2999. When loading the procedure, on the stack, enter the OBS_ID: OBS_ID = 2999 (hex) | | |
| 1.2 | | TM Checks | | <input type="checkbox"/> |
| | | Check Telemetry, for comparison later <div style="text-align: center;">THSK SM00T500</div> | | AND=SA_7_559 |
| | | Check telemetry, <div style="text-align: center;">MODE SM00M500</div> | = REDY | AND=SA_7_559 |
| 2 | | Set default start conditions | | Next Step: 3 |
| | | Note that a TM(5,1) packet [New_Step_Report] is generated after each of the following SET_OBS_STEP telecommands | | |
| | ET=+ UT=+00.00.01 | SET_OBS_STEP Command Parameter(s) : <div style="text-align: center;">OBSERVATION_STEP SP03N500</div> TC Control Flags : <div style="text-align: center;">GBM IL DSE --Y -- ---</div> Subsch. ID : 370 Det. descr. : SET OBSERVATION STEP | SET_OBS_STEP SC003500 0 <hex> | |

SpireEngSlowPMDump Dump and Check Memory (CRP)
 File: H_CRP_SPI_DUMP.xls
 Author: R. Biggins



| Step No. | Time | Activity/Remarks | TC/TLM | Display/ Branch |
|----------|----------------------|--|---|-----------------|
| | ET=+ UT=+00.00.01 | SET_BBID Command Parameter(s) : BUILDING_BLOCK_ID Subsch. ID : 370 Det. descr. : SET BUILDING BLOCK IDENTIFIER | SET_BBID SP01N500 8001500 80010001 <hex> | |
| | | Verify Telemetry BBFULLTYPE SM2LN500 | = ClearObs | AND=ZAZ90999 |
| | ET=+ UT=+00.00.01 | SET_OBS_STEP Command Parameter(s) : OBSERVATION_STEP TC Control Flags : Subsch. ID : 370 Det. descr. : SET OBSERVATION STEP | SET_OBS_STEP SP03N500 1 <hex> GBM IL DSE --Y -- --- | |
| | ET=+ UT=+00.00.01 | SET_OBSID Command Parameter(s) : OBSERVATION_ID Subsch. ID : 370 Det. descr. : SET OBSERVATION IDENTIFIER | SET_OBSID SP00N500 00000000 <hex> | |
| | | Verify Telemetry OBSID SM10N500 | = 00000000 <hex> | AND=ZAZ90999 |
| | ET=+ UT=+00.00.01 | SET_OBS_STEP Command Parameter(s) : OBSERVATION_STEP TC Control Flags : Subsch. ID : 370 Det. descr. : SET OBSERVATION STEP | SET_OBS_STEP SP03N500 0 <hex> GBM IL DSE --Y -- --- | |
| | ET=+ UT=+00.00.01 | SET_BBID Command Parameter(s) : BUILDING_BLOCK_ID Subsch. ID : 370 Det. descr. : SET BUILDING BLOCK IDENTIFIER | SET_BBID SP01N500 80000000 <hex> | |

SpireEngSlowPMDump Dump and Check Memory (CRP)
 File: H_CRP_SPI_DUMP.xls
 Author: R. Biggins



| Step No. | Time | Activity/Remarks | TC/TLM | Display/ Branch |
|----------|----------------------|---|--------------------------------|-----------------|
| | ET=+ UT=+00.00.02 | SET_OBS_STEP SET_OBS_STEP Command Parameter(s) : OBSERVATION_STEP SP03N500 TC Control Flags : GBM IL DSE --Y -- --- Subsch. ID : 370 Det. descr. : SET OBSERVATION STEP | SC003500 0 <hex> | |
| | ET=+ UT=+00.00.01 | SET_BBID SET_BBID Command Parameter(s) : BUILDING_BLOCK_ID SP01N500 Subsch. ID : 370 Det. descr. : SET BUILDING BLOCK IDENTIFIER | SC001500 80020001 <hex> | |
| | | Verify Telemetry BBFULLTYPE SM2LN500 | = SpireBbStartOb | AND=ZAZ90999 |
| 3 | | Set procedure conditions | | Next Step: 4 |
| | ET=+ UT=+00.00.01 | RESET_DRCU_COUNTERS RESET_DRCU_COUNTERS TC Control Flags : GBM IL DSE --Y -- --- Subsch. ID : 370 Det. descr. : RESET DRCU COUNTERS | SCD00505 | |
| | | Verify that the TRESET parameter has the same value as the THSK parameter TRESET SM01T500 | similar to THSK | AND=SA_1_559 |
| | | THSK SM00T500 | any incrementing | AND=SA_1_559 |
| | | Note that a TM(5,1) packet [New_Step_Report] is generated after each of the following SET_OBS_STEP telecommands | | |
| | ET=+ UT=+00.00.01 | SET_OBS_STEP SET_OBS_STEP Command Parameter(s) : OBSERVATION_STEP SP03N500 TC Control Flags : GBM IL DSE --Y -- --- Subsch. ID : 370 Det. descr. : SET OBSERVATION STEP | SC003500 1 <hex> | |

SpireEngSlowPMDump Dump and Check Memory (CRP)
 File: H_CRP_SPI_DUMP.xls
 Author: R. Biggins



| Step No. | Time | Activity/Remarks | TC/TLM | Display/ Branch |
|----------|----------------------|--|--|-----------------|
| | ET=+ UT=+00.00.01 | SET_OBSID Command Parameter(s) : OBSERVATION_ID Subsch. ID : 370 Det. descr. : SET OBSERVATION IDENTIFIER | SET_OBSID SC000500 OBS_ID SP00N500 | |
| | | Verify Telemetry If this procedure is being executed in response to an SEU (checksum failure), the value should be 2999 (hex) OBSID SM10N500 | OBS_ID | AND=ZAZ90999 |
| | ET=+ UT=+00.00.01 | SET_OBS_STEP Command Parameter(s) : OBSERVATION_STEP TC Control Flags : Subsch. ID : 370 Det. descr. : SET OBSERVATION STEP | SET_OBS_STEP SC003500 O <hex> GBM IL DSE --Y -- --- | |
| | ET=+ UT=+00.00.01 | SET_BBID Command Parameter(s) : BUILDING_BLOCK_ID Subsch. ID : 370 Det. descr. : SET BUILDING BLOCK IDENTIFIER | SET_BBID SC001500 8D630001 <hex> SP01N500 | |
| 4 | | Dump the Memory, Slowly | | Next Step: 5 |
| | | Send the first of these commands and hundreds will follow with no further intervention in this step. These step will take about 13 minutes to execute. | | |
| | ET=+ UT=+00.00.01 | DUMP_MEMORY_RAW Command Parameter(s) : MEMORYID_DUMPMEM STARTADDR_DUMPMEM NSAU_DUMPMEM TC Control Flags : Subsch. ID : 370 Det. descr. : DUMP MEMORY USING ABSOLUTE ADDRESSES | DUMP_MEMORY SCM01500 0 <hex> 4000 <hex> A6 <hex> GBM IL DSE --Y -- --- | |

SpireEngSlowPMDump Dump and Check Memory (CRP)
 File: H_CRP_SPI_DUMP.xls
 Author: R. Biggins



| Step No. | Time | Activity/Remarks | TC/TLM | Display/ Branch |
|----------|----------------------|--|---|-----------------|
| | ET=+ UT=+00.00.02 | DUMP_MEMORY_RAW DUMP_MEMORY Command Parameter(s) : MEMORYID_DUMPMEM SPM6N500 STARTADDR_DUMPMEM SPM7N500 NSAU_DUMPMEM SPM8N500 Subsch. ID : 370 Det. descr. : DUMP MEMORY USING ABSOLUTE ADDRESSES | SCM01500 0 <hex> 40a6 <hex> a6 <hex> | |
| | ET=+ UT=+00.00.02 | DUMP_MEMORY_RAW DUMP_MEMORY Command Parameter(s) : MEMORYID_DUMPMEM SPM6N500 STARTADDR_DUMPMEM SPM7N500 NSAU_DUMPMEM SPM8N500 Subsch. ID : 370 Det. descr. : DUMP MEMORY USING ABSOLUTE ADDRESSES | SCM01500 0 <hex> 414c <hex> a6 <hex> | |
| | ET=+ UT=+00.00.02 | DUMP_MEMORY_RAW DUMP_MEMORY Command Parameter(s) : MEMORYID_DUMPMEM SPM6N500 STARTADDR_DUMPMEM SPM7N500 NSAU_DUMPMEM SPM8N500 Subsch. ID : 370 Det. descr. : DUMP MEMORY USING ABSOLUTE ADDRESSES | SCM01500 0 <hex> 41f2 <hex> a6 <hex> | |
| | ET=+ UT=+00.00.02 | DUMP_MEMORY_RAW DUMP_MEMORY Command Parameter(s) : MEMORYID_DUMPMEM SPM6N500 STARTADDR_DUMPMEM SPM7N500 NSAU_DUMPMEM SPM8N500 Subsch. ID : 370 Det. descr. : DUMP MEMORY USING ABSOLUTE ADDRESSES | SCM01500 0 <hex> 4298 <hex> a6 <hex> | |
| | ET=+ UT=+00.00.02 | DUMP_MEMORY_RAW DUMP_MEMORY Command Parameter(s) : MEMORYID_DUMPMEM SPM6N500 STARTADDR_DUMPMEM SPM7N500 NSAU_DUMPMEM SPM8N500 Subsch. ID : 370 Det. descr. : DUMP MEMORY USING ABSOLUTE ADDRESSES | SCM01500 0 <hex> 433e <hex> a6 <hex> | |

SpireEngSlowPMDump Dump and Check Memory (CRP)
 File: H_CRP_SPI_DUMP.xls
 Author: R. Biggins



| Step No. | Time | Activity/Remarks | TC/TLM | Display/ Branch |
|----------|----------------------|--|---|-----------------|
| | ET=+ UT=+00.00.02 | DUMP_MEMORY_RAW DUMP_MEMORY Command Parameter(s) : MEMORYID_DUMPMEM SPM6N500 STARTADDR_DUMPMEM SPM7N500 NSAU_DUMPMEM SPM8N500 Subsch. ID : 370 Det. descr. : DUMP MEMORY USING ABSOLUTE ADDRESSES | SCM01500 0 <hex> 43e4 <hex> a6 <hex> | |
| | ET=+ UT=+00.00.02 | DUMP_MEMORY_RAW DUMP_MEMORY Command Parameter(s) : MEMORYID_DUMPMEM SPM6N500 STARTADDR_DUMPMEM SPM7N500 NSAU_DUMPMEM SPM8N500 Subsch. ID : 370 Det. descr. : DUMP MEMORY USING ABSOLUTE ADDRESSES | SCM01500 0 <hex> 448a <hex> a6 <hex> | |
| | ET=+ UT=+00.00.02 | DUMP_MEMORY_RAW DUMP_MEMORY Command Parameter(s) : MEMORYID_DUMPMEM SPM6N500 STARTADDR_DUMPMEM SPM7N500 NSAU_DUMPMEM SPM8N500 Subsch. ID : 370 Det. descr. : DUMP MEMORY USING ABSOLUTE ADDRESSES | SCM01500 0 <hex> 4530 <hex> a6 <hex> | |
| | ET=+ UT=+00.00.02 | DUMP_MEMORY_RAW DUMP_MEMORY Command Parameter(s) : MEMORYID_DUMPMEM SPM6N500 STARTADDR_DUMPMEM SPM7N500 NSAU_DUMPMEM SPM8N500 Subsch. ID : 370 Det. descr. : DUMP MEMORY USING ABSOLUTE ADDRESSES | SCM01500 0 <hex> 45d6 <hex> a6 <hex> | |
| | ET=+ UT=+00.00.02 | DUMP_MEMORY_RAW DUMP_MEMORY Command Parameter(s) : MEMORYID_DUMPMEM SPM6N500 STARTADDR_DUMPMEM SPM7N500 NSAU_DUMPMEM SPM8N500 Subsch. ID : 370 Det. descr. : DUMP MEMORY USING ABSOLUTE ADDRESSES | SCM01500 0 <hex> 467c <hex> a6 <hex> | |

SpireEngSlowPMDump Dump and Check Memory (CRP)
 File: H_CRP_SPI_DUMP.xls
 Author: R. Biggins



| Step No. | Time | Activity/Remarks | TC/TLM | Display/ Branch |
|----------|----------------------|--|---|-----------------|
| | ET=+ UT=+00.00.02 | DUMP_MEMORY_RAW DUMP_MEMORY Command Parameter(s) : MEMORYID_DUMPMEM SPM6N500 STARTADDR_DUMPMEM SPM7N500 NSAU_DUMPMEM SPM8N500 Subsch. ID : 370 Det. descr. : DUMP MEMORY USING ABSOLUTE ADDRESSES | SCM01500 0 <hex> 4722 <hex> a6 <hex> | |
| | ET=+ UT=+00.00.02 | DUMP_MEMORY_RAW DUMP_MEMORY Command Parameter(s) : MEMORYID_DUMPMEM SPM6N500 STARTADDR_DUMPMEM SPM7N500 NSAU_DUMPMEM SPM8N500 Subsch. ID : 370 Det. descr. : DUMP MEMORY USING ABSOLUTE ADDRESSES | SCM01500 0 <hex> 47c8 <hex> a6 <hex> | |
| | ET=+ UT=+00.00.02 | DUMP_MEMORY_RAW DUMP_MEMORY Command Parameter(s) : MEMORYID_DUMPMEM SPM6N500 STARTADDR_DUMPMEM SPM7N500 NSAU_DUMPMEM SPM8N500 Subsch. ID : 370 Det. descr. : DUMP MEMORY USING ABSOLUTE ADDRESSES | SCM01500 0 <hex> 486e <hex> a6 <hex> | |
| | ET=+ UT=+00.00.02 | DUMP_MEMORY_RAW DUMP_MEMORY Command Parameter(s) : MEMORYID_DUMPMEM SPM6N500 STARTADDR_DUMPMEM SPM7N500 NSAU_DUMPMEM SPM8N500 Subsch. ID : 370 Det. descr. : DUMP MEMORY USING ABSOLUTE ADDRESSES | SCM01500 0 <hex> 4914 <hex> a6 <hex> | |
| | ET=+ UT=+00.00.02 | DUMP_MEMORY_RAW DUMP_MEMORY Command Parameter(s) : MEMORYID_DUMPMEM SPM6N500 STARTADDR_DUMPMEM SPM7N500 NSAU_DUMPMEM SPM8N500 Subsch. ID : 370 Det. descr. : DUMP MEMORY USING ABSOLUTE ADDRESSES | SCM01500 0 <hex> 49ba <hex> a6 <hex> | |

SpireEngSlowPMDump Dump and Check Memory (CRP)
 File: H_CRP_SPI_DUMP.xls
 Author: R. Biggins



| Step No. | Time | Activity/Remarks | TC/TLM | Display/ Branch |
|----------|----------------------|--|---|-----------------|
| | ET=+ UT=+00.00.02 | DUMP_MEMORY_RAW DUMP_MEMORY Command Parameter(s) : MEMORYID_DUMPMEM SPM6N500 STARTADDR_DUMPMEM SPM7N500 NSAU_DUMPMEM SPM8N500 Subsch. ID : 370 Det. descr. : DUMP MEMORY USING ABSOLUTE ADDRESSES | SCM01500 0 <hex> 4a60 <hex> a6 <hex> | |
| | ET=+ UT=+00.00.02 | DUMP_MEMORY_RAW DUMP_MEMORY Command Parameter(s) : MEMORYID_DUMPMEM SPM6N500 STARTADDR_DUMPMEM SPM7N500 NSAU_DUMPMEM SPM8N500 Subsch. ID : 370 Det. descr. : DUMP MEMORY USING ABSOLUTE ADDRESSES | SCM01500 0 <hex> 4b06 <hex> a6 <hex> | |
| | ET=+ UT=+00.00.02 | DUMP_MEMORY_RAW DUMP_MEMORY Command Parameter(s) : MEMORYID_DUMPMEM SPM6N500 STARTADDR_DUMPMEM SPM7N500 NSAU_DUMPMEM SPM8N500 Subsch. ID : 370 Det. descr. : DUMP MEMORY USING ABSOLUTE ADDRESSES | SCM01500 0 <hex> 4bac <hex> a6 <hex> | |
| | ET=+ UT=+00.00.02 | DUMP_MEMORY_RAW DUMP_MEMORY Command Parameter(s) : MEMORYID_DUMPMEM SPM6N500 STARTADDR_DUMPMEM SPM7N500 NSAU_DUMPMEM SPM8N500 Subsch. ID : 370 Det. descr. : DUMP MEMORY USING ABSOLUTE ADDRESSES | SCM01500 0 <hex> 4c52 <hex> a6 <hex> | |
| | ET=+ UT=+00.00.02 | DUMP_MEMORY_RAW DUMP_MEMORY Command Parameter(s) : MEMORYID_DUMPMEM SPM6N500 STARTADDR_DUMPMEM SPM7N500 NSAU_DUMPMEM SPM8N500 Subsch. ID : 370 Det. descr. : DUMP MEMORY USING ABSOLUTE ADDRESSES | SCM01500 0 <hex> 4cf8 <hex> a6 <hex> | |

SpireEngSlowPMDump Dump and Check Memory (CRP)
 File: H_CRP_SPI_DUMP.xls
 Author: R. Biggins



| Step No. | Time | Activity/Remarks | TC/TLM | Display/ Branch |
|----------|----------------------|--|---|-----------------|
| | ET=+ UT=+00.00.02 | DUMP_MEMORY_RAW DUMP_MEMORY Command Parameter(s) : MEMORYID_DUMPMEM SPM6N500 STARTADDR_DUMPMEM SPM7N500 NSAU_DUMPMEM SPM8N500 Subsch. ID : 370 Det. descr. : DUMP MEMORY USING ABSOLUTE ADDRESSES | SCM01500 0 <hex> 4d9e <hex> a6 <hex> | |
| | ET=+ UT=+00.00.02 | DUMP_MEMORY_RAW DUMP_MEMORY Command Parameter(s) : MEMORYID_DUMPMEM SPM6N500 STARTADDR_DUMPMEM SPM7N500 NSAU_DUMPMEM SPM8N500 Subsch. ID : 370 Det. descr. : DUMP MEMORY USING ABSOLUTE ADDRESSES | SCM01500 0 <hex> 4e44 <hex> a6 <hex> | |
| | ET=+ UT=+00.00.02 | DUMP_MEMORY_RAW DUMP_MEMORY Command Parameter(s) : MEMORYID_DUMPMEM SPM6N500 STARTADDR_DUMPMEM SPM7N500 NSAU_DUMPMEM SPM8N500 Subsch. ID : 370 Det. descr. : DUMP MEMORY USING ABSOLUTE ADDRESSES | SCM01500 0 <hex> 4eea <hex> a6 <hex> | |
| | ET=+ UT=+00.00.02 | DUMP_MEMORY_RAW DUMP_MEMORY Command Parameter(s) : MEMORYID_DUMPMEM SPM6N500 STARTADDR_DUMPMEM SPM7N500 NSAU_DUMPMEM SPM8N500 Subsch. ID : 370 Det. descr. : DUMP MEMORY USING ABSOLUTE ADDRESSES | SCM01500 0 <hex> 4f90 <hex> a6 <hex> | |
| | ET=+ UT=+00.00.02 | DUMP_MEMORY_RAW DUMP_MEMORY Command Parameter(s) : MEMORYID_DUMPMEM SPM6N500 STARTADDR_DUMPMEM SPM7N500 NSAU_DUMPMEM SPM8N500 Subsch. ID : 370 Det. descr. : DUMP MEMORY USING ABSOLUTE ADDRESSES | SCM01500 0 <hex> 5036 <hex> a6 <hex> | |

SpireEngSlowPMDump Dump and Check Memory (CRP)
 File: H_CRP_SPI_DUMP.xls
 Author: R. Biggins



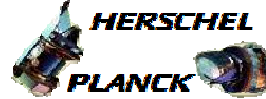
| Step No. | Time | Activity/Remarks | TC/TLM | Display/ Branch |
|----------|----------------------|--|---|-----------------|
| | ET=+ UT=+00.00.02 | DUMP_MEMORY_RAW DUMP_MEMORY Command Parameter(s) : MEMORYID_DUMPMEM SPM6N500 STARTADDR_DUMPMEM SPM7N500 NSAU_DUMPMEM SPM8N500 Subsch. ID : 370 Det. descr. : DUMP MEMORY USING ABSOLUTE ADDRESSES | SCM01500 0 <hex> 50dc <hex> a6 <hex> | |
| | ET=+ UT=+00.00.02 | DUMP_MEMORY_RAW DUMP_MEMORY Command Parameter(s) : MEMORYID_DUMPMEM SPM6N500 STARTADDR_DUMPMEM SPM7N500 NSAU_DUMPMEM SPM8N500 Subsch. ID : 370 Det. descr. : DUMP MEMORY USING ABSOLUTE ADDRESSES | SCM01500 0 <hex> 5182 <hex> a6 <hex> | |
| | ET=+ UT=+00.00.02 | DUMP_MEMORY_RAW DUMP_MEMORY Command Parameter(s) : MEMORYID_DUMPMEM SPM6N500 STARTADDR_DUMPMEM SPM7N500 NSAU_DUMPMEM SPM8N500 Subsch. ID : 370 Det. descr. : DUMP MEMORY USING ABSOLUTE ADDRESSES | SCM01500 0 <hex> 5228 <hex> a6 <hex> | |
| | ET=+ UT=+00.00.02 | DUMP_MEMORY_RAW DUMP_MEMORY Command Parameter(s) : MEMORYID_DUMPMEM SPM6N500 STARTADDR_DUMPMEM SPM7N500 NSAU_DUMPMEM SPM8N500 Subsch. ID : 370 Det. descr. : DUMP MEMORY USING ABSOLUTE ADDRESSES | SCM01500 0 <hex> 52ce <hex> a6 <hex> | |
| | ET=+ UT=+00.00.02 | DUMP_MEMORY_RAW DUMP_MEMORY Command Parameter(s) : MEMORYID_DUMPMEM SPM6N500 STARTADDR_DUMPMEM SPM7N500 NSAU_DUMPMEM SPM8N500 Subsch. ID : 370 Det. descr. : DUMP MEMORY USING ABSOLUTE ADDRESSES | SCM01500 0 <hex> 5374 <hex> a6 <hex> | |

SpireEngSlowPMDump Dump and Check Memory (CRP)
 File: H_CRP_SPI_DUMP.xls
 Author: R. Biggins



| Step No. | Time | Activity/Remarks | TC/TLM | Display/ Branch |
|----------|----------------------|--|---|-----------------|
| | ET=+ UT=+00.00.02 | DUMP_MEMORY_RAW DUMP_MEMORY Command Parameter(s) : MEMORYID_DUMPMEM SPM6N500 STARTADDR_DUMPMEM SPM7N500 NSAU_DUMPMEM SPM8N500 Subsch. ID : 370 Det. descr. : DUMP MEMORY USING ABSOLUTE ADDRESSES | SCM01500 0 <hex> 541a <hex> a6 <hex> | |
| | ET=+ UT=+00.00.02 | DUMP_MEMORY_RAW DUMP_MEMORY Command Parameter(s) : MEMORYID_DUMPMEM SPM6N500 STARTADDR_DUMPMEM SPM7N500 NSAU_DUMPMEM SPM8N500 Subsch. ID : 370 Det. descr. : DUMP MEMORY USING ABSOLUTE ADDRESSES | SCM01500 0 <hex> 54c0 <hex> a6 <hex> | |
| | ET=+ UT=+00.00.02 | DUMP_MEMORY_RAW DUMP_MEMORY Command Parameter(s) : MEMORYID_DUMPMEM SPM6N500 STARTADDR_DUMPMEM SPM7N500 NSAU_DUMPMEM SPM8N500 Subsch. ID : 370 Det. descr. : DUMP MEMORY USING ABSOLUTE ADDRESSES | SCM01500 0 <hex> 5566 <hex> a6 <hex> | |
| | ET=+ UT=+00.00.02 | DUMP_MEMORY_RAW DUMP_MEMORY Command Parameter(s) : MEMORYID_DUMPMEM SPM6N500 STARTADDR_DUMPMEM SPM7N500 NSAU_DUMPMEM SPM8N500 Subsch. ID : 370 Det. descr. : DUMP MEMORY USING ABSOLUTE ADDRESSES | SCM01500 0 <hex> 560c <hex> a6 <hex> | |
| | ET=+ UT=+00.00.02 | DUMP_MEMORY_RAW DUMP_MEMORY Command Parameter(s) : MEMORYID_DUMPMEM SPM6N500 STARTADDR_DUMPMEM SPM7N500 NSAU_DUMPMEM SPM8N500 Subsch. ID : 370 Det. descr. : DUMP MEMORY USING ABSOLUTE ADDRESSES | SCM01500 0 <hex> 56b2 <hex> 99 <hex> | |

SpireEngSlowPMDump Dump and Check Memory (CRP)
 File: H_CRP_SPI_DUMP.xls
 Author: R. Biggins



| Step No. | Time | Activity/Remarks | TC/TLM | Display/ Branch |
|----------|----------------------|--|---|-----------------|
| | ET=+ UT=+00.00.02 | DUMP_MEMORY_RAW DUMP_MEMORY Command Parameter(s) : MEMORYID_DUMPMEM SPM6N500 STARTADDR_DUMPMEM SPM7N500 NSAU_DUMPMEM SPM8N500 Subsch. ID : 370 Det. descr. : DUMP MEMORY USING ABSOLUTE ADDRESSES | SCM01500 0 <hex> 6000 <hex> a6 <hex> | |
| | ET=+ UT=+00.00.02 | DUMP_MEMORY_RAW DUMP_MEMORY Command Parameter(s) : MEMORYID_DUMPMEM SPM6N500 STARTADDR_DUMPMEM SPM7N500 NSAU_DUMPMEM SPM8N500 Subsch. ID : 370 Det. descr. : DUMP MEMORY USING ABSOLUTE ADDRESSES | SCM01500 0 <hex> 60a6 <hex> a6 <hex> | |
| | ET=+ UT=+00.00.02 | DUMP_MEMORY_RAW DUMP_MEMORY Command Parameter(s) : MEMORYID_DUMPMEM SPM6N500 STARTADDR_DUMPMEM SPM7N500 NSAU_DUMPMEM SPM8N500 Subsch. ID : 370 Det. descr. : DUMP MEMORY USING ABSOLUTE ADDRESSES | SCM01500 0 <hex> 614c <hex> a6 <hex> | |
| | ET=+ UT=+00.00.02 | DUMP_MEMORY_RAW DUMP_MEMORY Command Parameter(s) : MEMORYID_DUMPMEM SPM6N500 STARTADDR_DUMPMEM SPM7N500 NSAU_DUMPMEM SPM8N500 Subsch. ID : 370 Det. descr. : DUMP MEMORY USING ABSOLUTE ADDRESSES | SCM01500 0 <hex> 61f1 <hex> a6 <hex> | |
| | ET=+ UT=+00.00.02 | DUMP_MEMORY_RAW DUMP_MEMORY Command Parameter(s) : MEMORYID_DUMPMEM SPM6N500 STARTADDR_DUMPMEM SPM7N500 NSAU_DUMPMEM SPM8N500 Subsch. ID : 370 Det. descr. : DUMP MEMORY USING ABSOLUTE ADDRESSES | SCM01500 0 <hex> 6296 <hex> a6 <hex> | |

SpireEngSlowPMDump Dump and Check Memory (CRP)
 File: H_CRP_SPI_DUMP.xls
 Author: R. Biggins



| Step No. | Time | Activity/Remarks | TC/TLM | Display/ Branch |
|----------|----------------------|--|---|-----------------|
| | ET=+ UT=+00.00.02 | DUMP_MEMORY_RAW DUMP_MEMORY Command Parameter(s) : MEMORYID_DUMPMEM SPM6N500 STARTADDR_DUMPMEM SPM7N500 NSAU_DUMPMEM SPM8N500 Subsch. ID : 370 Det. descr. : DUMP MEMORY USING ABSOLUTE ADDRESSES | SCM01500 0 <hex> 633b <hex> a6 <hex> | |
| | ET=+ UT=+00.00.02 | DUMP_MEMORY_RAW DUMP_MEMORY Command Parameter(s) : MEMORYID_DUMPMEM SPM6N500 STARTADDR_DUMPMEM SPM7N500 NSAU_DUMPMEM SPM8N500 Subsch. ID : 370 Det. descr. : DUMP MEMORY USING ABSOLUTE ADDRESSES | SCM01500 0 <hex> 63e0 <hex> a6 <hex> | |
| | ET=+ UT=+00.00.02 | DUMP_MEMORY_RAW DUMP_MEMORY Command Parameter(s) : MEMORYID_DUMPMEM SPM6N500 STARTADDR_DUMPMEM SPM7N500 NSAU_DUMPMEM SPM8N500 Subsch. ID : 370 Det. descr. : DUMP MEMORY USING ABSOLUTE ADDRESSES | SCM01500 0 <hex> 6485 <hex> a6 <hex> | |
| | ET=+ UT=+00.00.02 | DUMP_MEMORY_RAW DUMP_MEMORY Command Parameter(s) : MEMORYID_DUMPMEM SPM6N500 STARTADDR_DUMPMEM SPM7N500 NSAU_DUMPMEM SPM8N500 Subsch. ID : 370 Det. descr. : DUMP MEMORY USING ABSOLUTE ADDRESSES | SCM01500 0 <hex> 652a <hex> a6 <hex> | |
| | ET=+ UT=+00.00.02 | DUMP_MEMORY_RAW DUMP_MEMORY Command Parameter(s) : MEMORYID_DUMPMEM SPM6N500 STARTADDR_DUMPMEM SPM7N500 NSAU_DUMPMEM SPM8N500 Subsch. ID : 370 Det. descr. : DUMP MEMORY USING ABSOLUTE ADDRESSES | SCM01500 0 <hex> 65cf <hex> a6 <hex> | |

SpireEngSlowPMDump Dump and Check Memory (CRP)
 File: H_CRP_SPI_DUMP.xls
 Author: R. Biggins



| Step No. | Time | Activity/Remarks | TC/TLM | Display/ Branch |
|----------|----------------------|--|---|-----------------|
| | ET=+ UT=+00.00.02 | DUMP_MEMORY_RAW DUMP_MEMORY Command Parameter(s) : MEMORYID_DUMPMEM SPM6N500 STARTADDR_DUMPMEM SPM7N500 NSAU_DUMPMEM SPM8N500 Subsch. ID : 370 Det. descr. : DUMP MEMORY USING ABSOLUTE ADDRESSES | SCM01500 0 <hex> 6674 <hex> a6 <hex> | |
| | ET=+ UT=+00.00.02 | DUMP_MEMORY_RAW DUMP_MEMORY Command Parameter(s) : MEMORYID_DUMPMEM SPM6N500 STARTADDR_DUMPMEM SPM7N500 NSAU_DUMPMEM SPM8N500 Subsch. ID : 370 Det. descr. : DUMP MEMORY USING ABSOLUTE ADDRESSES | SCM01500 0 <hex> 6719 <hex> a6 <hex> | |
| | ET=+ UT=+00.00.02 | DUMP_MEMORY_RAW DUMP_MEMORY Command Parameter(s) : MEMORYID_DUMPMEM SPM6N500 STARTADDR_DUMPMEM SPM7N500 NSAU_DUMPMEM SPM8N500 Subsch. ID : 370 Det. descr. : DUMP MEMORY USING ABSOLUTE ADDRESSES | SCM01500 0 <hex> 67be <hex> a6 <hex> | |
| | ET=+ UT=+00.00.02 | DUMP_MEMORY_RAW DUMP_MEMORY Command Parameter(s) : MEMORYID_DUMPMEM SPM6N500 STARTADDR_DUMPMEM SPM7N500 NSAU_DUMPMEM SPM8N500 Subsch. ID : 370 Det. descr. : DUMP MEMORY USING ABSOLUTE ADDRESSES | SCM01500 0 <hex> 6863 <hex> a6 <hex> | |
| | ET=+ UT=+00.00.02 | DUMP_MEMORY_RAW DUMP_MEMORY Command Parameter(s) : MEMORYID_DUMPMEM SPM6N500 STARTADDR_DUMPMEM SPM7N500 NSAU_DUMPMEM SPM8N500 Subsch. ID : 370 Det. descr. : DUMP MEMORY USING ABSOLUTE ADDRESSES | SCM01500 0 <hex> 6908 <hex> a6 <hex> | |

SpireEngSlowPMDump Dump and Check Memory (CRP)
 File: H_CRP_SPI_DUMP.xls
 Author: R. Biggins



| Step No. | Time | Activity/Remarks | TC/TLM | Display/ Branch |
|----------|----------------------|--|---|-----------------|
| | ET=+ UT=+00.00.02 | DUMP_MEMORY_RAW DUMP_MEMORY Command Parameter(s) : MEMORYID_DUMPMEM SPM6N500 STARTADDR_DUMPMEM SPM7N500 NSAU_DUMPMEM SPM8N500 Subsch. ID : 370 Det. descr. : DUMP MEMORY USING ABSOLUTE ADDRESSES | SCM01500 0 <hex> 69ad <hex> a6 <hex> | |
| | ET=+ UT=+00.00.02 | DUMP_MEMORY_RAW DUMP_MEMORY Command Parameter(s) : MEMORYID_DUMPMEM SPM6N500 STARTADDR_DUMPMEM SPM7N500 NSAU_DUMPMEM SPM8N500 Subsch. ID : 370 Det. descr. : DUMP MEMORY USING ABSOLUTE ADDRESSES | SCM01500 0 <hex> 6a52 <hex> a6 <hex> | |
| | ET=+ UT=+00.00.02 | DUMP_MEMORY_RAW DUMP_MEMORY Command Parameter(s) : MEMORYID_DUMPMEM SPM6N500 STARTADDR_DUMPMEM SPM7N500 NSAU_DUMPMEM SPM8N500 Subsch. ID : 370 Det. descr. : DUMP MEMORY USING ABSOLUTE ADDRESSES | SCM01500 0 <hex> 6af7 <hex> a6 <hex> | |
| | ET=+ UT=+00.00.02 | DUMP_MEMORY_RAW DUMP_MEMORY Command Parameter(s) : MEMORYID_DUMPMEM SPM6N500 STARTADDR_DUMPMEM SPM7N500 NSAU_DUMPMEM SPM8N500 Subsch. ID : 370 Det. descr. : DUMP MEMORY USING ABSOLUTE ADDRESSES | SCM01500 0 <hex> 6b9c <hex> a6 <hex> | |
| | ET=+ UT=+00.00.02 | DUMP_MEMORY_RAW DUMP_MEMORY Command Parameter(s) : MEMORYID_DUMPMEM SPM6N500 STARTADDR_DUMPMEM SPM7N500 NSAU_DUMPMEM SPM8N500 Subsch. ID : 370 Det. descr. : DUMP MEMORY USING ABSOLUTE ADDRESSES | SCM01500 0 <hex> 6c41 <hex> a6 <hex> | |

SpireEngSlowPMDump Dump and Check Memory (CRP)
 File: H_CRP_SPI_DUMP.xls
 Author: R. Biggins



| Step No. | Time | Activity/Remarks | TC/TLM | Display/ Branch |
|----------|----------------------|--|---|-----------------|
| | ET=+ UT=+00.00.02 | DUMP_MEMORY_RAW DUMP_MEMORY Command Parameter(s) : MEMORYID_DUMPMEM SPM6N500 STARTADDR_DUMPMEM SPM7N500 NSAU_DUMPMEM SPM8N500 Subsch. ID : 370 Det. descr. : DUMP MEMORY USING ABSOLUTE ADDRESSES | SCM01500 0 <hex> 6ce6 <hex> a6 <hex> | |
| | ET=+ UT=+00.00.02 | DUMP_MEMORY_RAW DUMP_MEMORY Command Parameter(s) : MEMORYID_DUMPMEM SPM6N500 STARTADDR_DUMPMEM SPM7N500 NSAU_DUMPMEM SPM8N500 Subsch. ID : 370 Det. descr. : DUMP MEMORY USING ABSOLUTE ADDRESSES | SCM01500 0 <hex> 6d8b <hex> a6 <hex> | |
| | ET=+ UT=+00.00.02 | DUMP_MEMORY_RAW DUMP_MEMORY Command Parameter(s) : MEMORYID_DUMPMEM SPM6N500 STARTADDR_DUMPMEM SPM7N500 NSAU_DUMPMEM SPM8N500 Subsch. ID : 370 Det. descr. : DUMP MEMORY USING ABSOLUTE ADDRESSES | SCM01500 0 <hex> 6e30 <hex> a6 <hex> | |
| | ET=+ UT=+00.00.02 | DUMP_MEMORY_RAW DUMP_MEMORY Command Parameter(s) : MEMORYID_DUMPMEM SPM6N500 STARTADDR_DUMPMEM SPM7N500 NSAU_DUMPMEM SPM8N500 Subsch. ID : 370 Det. descr. : DUMP MEMORY USING ABSOLUTE ADDRESSES | SCM01500 0 <hex> 6ed5 <hex> a6 <hex> | |
| | ET=+ UT=+00.00.02 | DUMP_MEMORY_RAW DUMP_MEMORY Command Parameter(s) : MEMORYID_DUMPMEM SPM6N500 STARTADDR_DUMPMEM SPM7N500 NSAU_DUMPMEM SPM8N500 Subsch. ID : 370 Det. descr. : DUMP MEMORY USING ABSOLUTE ADDRESSES | SCM01500 0 <hex> 6f7a <hex> a6 <hex> | |

SpireEngSlowPMDump Dump and Check Memory (CRP)
 File: H_CRP_SPI_DUMP.xls
 Author: R. Biggins



| Step No. | Time | Activity/Remarks | TC/TLM | Display/ Branch |
|----------|----------------------|--|---|-----------------|
| | ET=+ UT=+00.00.02 | DUMP_MEMORY_RAW DUMP_MEMORY Command Parameter(s) : MEMORYID_DUMPMEM SPM6N500 STARTADDR_DUMPMEM SPM7N500 NSAU_DUMPMEM SPM8N500 Subsch. ID : 370 Det. descr. : DUMP MEMORY USING ABSOLUTE ADDRESSES | SCM01500 0 <hex> 701f <hex> a6 <hex> | |
| | ET=+ UT=+00.00.02 | DUMP_MEMORY_RAW DUMP_MEMORY Command Parameter(s) : MEMORYID_DUMPMEM SPM6N500 STARTADDR_DUMPMEM SPM7N500 NSAU_DUMPMEM SPM8N500 Subsch. ID : 370 Det. descr. : DUMP MEMORY USING ABSOLUTE ADDRESSES | SCM01500 0 <hex> 70c4 <hex> a6 <hex> | |
| | ET=+ UT=+00.00.02 | DUMP_MEMORY_RAW DUMP_MEMORY Command Parameter(s) : MEMORYID_DUMPMEM SPM6N500 STARTADDR_DUMPMEM SPM7N500 NSAU_DUMPMEM SPM8N500 Subsch. ID : 370 Det. descr. : DUMP MEMORY USING ABSOLUTE ADDRESSES | SCM01500 0 <hex> 7169 <hex> a6 <hex> | |
| | ET=+ UT=+00.00.02 | DUMP_MEMORY_RAW DUMP_MEMORY Command Parameter(s) : MEMORYID_DUMPMEM SPM6N500 STARTADDR_DUMPMEM SPM7N500 NSAU_DUMPMEM SPM8N500 Subsch. ID : 370 Det. descr. : DUMP MEMORY USING ABSOLUTE ADDRESSES | SCM01500 0 <hex> 720e <hex> a6 <hex> | |
| | ET=+ UT=+00.00.02 | DUMP_MEMORY_RAW DUMP_MEMORY Command Parameter(s) : MEMORYID_DUMPMEM SPM6N500 STARTADDR_DUMPMEM SPM7N500 NSAU_DUMPMEM SPM8N500 Subsch. ID : 370 Det. descr. : DUMP MEMORY USING ABSOLUTE ADDRESSES | SCM01500 0 <hex> 72b3 <hex> a6 <hex> | |

SpireEngSlowPMDump Dump and Check Memory (CRP)
 File: H_CRP_SPI_DUMP.xls
 Author: R. Biggins



| Step No. | Time | Activity/Remarks | TC/TLM | Display/ Branch |
|----------|----------------------|--|---|-----------------|
| | ET=+ UT=+00.00.02 | DUMP_MEMORY_RAW DUMP_MEMORY Command Parameter(s) : MEMORYID_DUMPMEM SPM6N500 STARTADDR_DUMPMEM SPM7N500 NSAU_DUMPMEM SPM8N500 Subsch. ID : 370 Det. descr. : DUMP MEMORY USING ABSOLUTE ADDRESSES | SCM01500 0 <hex> 7358 <hex> a6 <hex> | |
| | ET=+ UT=+00.00.02 | DUMP_MEMORY_RAW DUMP_MEMORY Command Parameter(s) : MEMORYID_DUMPMEM SPM6N500 STARTADDR_DUMPMEM SPM7N500 NSAU_DUMPMEM SPM8N500 Subsch. ID : 370 Det. descr. : DUMP MEMORY USING ABSOLUTE ADDRESSES | SCM01500 0 <hex> 73fd <hex> a6 <hex> | |
| | ET=+ UT=+00.00.02 | DUMP_MEMORY_RAW DUMP_MEMORY Command Parameter(s) : MEMORYID_DUMPMEM SPM6N500 STARTADDR_DUMPMEM SPM7N500 NSAU_DUMPMEM SPM8N500 Subsch. ID : 370 Det. descr. : DUMP MEMORY USING ABSOLUTE ADDRESSES | SCM01500 0 <hex> 74a2 <hex> a6 <hex> | |
| | ET=+ UT=+00.00.02 | DUMP_MEMORY_RAW DUMP_MEMORY Command Parameter(s) : MEMORYID_DUMPMEM SPM6N500 STARTADDR_DUMPMEM SPM7N500 NSAU_DUMPMEM SPM8N500 Subsch. ID : 370 Det. descr. : DUMP MEMORY USING ABSOLUTE ADDRESSES | SCM01500 0 <hex> 7547 <hex> a6 <hex> | |
| | ET=+ UT=+00.00.02 | DUMP_MEMORY_RAW DUMP_MEMORY Command Parameter(s) : MEMORYID_DUMPMEM SPM6N500 STARTADDR_DUMPMEM SPM7N500 NSAU_DUMPMEM SPM8N500 Subsch. ID : 370 Det. descr. : DUMP MEMORY USING ABSOLUTE ADDRESSES | SCM01500 0 <hex> 75ec <hex> a6 <hex> | |

SpireEngSlowPMDump Dump and Check Memory (CRP)
 File: H_CRP_SPI_DUMP.xls
 Author: R. Biggins



| Step No. | Time | Activity/Remarks | TC/TLM | Display/ Branch |
|----------|----------------------|--|---|-----------------|
| | ET=+ UT=+00.00.02 | DUMP_MEMORY_RAW DUMP_MEMORY Command Parameter(s) : MEMORYID_DUMPMEM SPM6N500 STARTADDR_DUMPMEM SPM7N500 NSAU_DUMPMEM SPM8N500 Subsch. ID : 370 Det. descr. : DUMP MEMORY USING ABSOLUTE ADDRESSES | SCM01500 0 <hex> 7691 <hex> a6 <hex> | |
| | ET=+ UT=+00.00.02 | DUMP_MEMORY_RAW DUMP_MEMORY Command Parameter(s) : MEMORYID_DUMPMEM SPM6N500 STARTADDR_DUMPMEM SPM7N500 NSAU_DUMPMEM SPM8N500 Subsch. ID : 370 Det. descr. : DUMP MEMORY USING ABSOLUTE ADDRESSES | SCM01500 0 <hex> 7736 <hex> a6 <hex> | |
| | ET=+ UT=+00.00.02 | DUMP_MEMORY_RAW DUMP_MEMORY Command Parameter(s) : MEMORYID_DUMPMEM SPM6N500 STARTADDR_DUMPMEM SPM7N500 NSAU_DUMPMEM SPM8N500 Subsch. ID : 370 Det. descr. : DUMP MEMORY USING ABSOLUTE ADDRESSES | SCM01500 0 <hex> 77db <hex> a6 <hex> | |
| | ET=+ UT=+00.00.02 | DUMP_MEMORY_RAW DUMP_MEMORY Command Parameter(s) : MEMORYID_DUMPMEM SPM6N500 STARTADDR_DUMPMEM SPM7N500 NSAU_DUMPMEM SPM8N500 Subsch. ID : 370 Det. descr. : DUMP MEMORY USING ABSOLUTE ADDRESSES | SCM01500 0 <hex> 7880 <hex> a6 <hex> | |
| | ET=+ UT=+00.00.02 | DUMP_MEMORY_RAW DUMP_MEMORY Command Parameter(s) : MEMORYID_DUMPMEM SPM6N500 STARTADDR_DUMPMEM SPM7N500 NSAU_DUMPMEM SPM8N500 Subsch. ID : 370 Det. descr. : DUMP MEMORY USING ABSOLUTE ADDRESSES | SCM01500 0 <hex> 7925 <hex> a6 <hex> | |

SpireEngSlowPMDump Dump and Check Memory (CRP)
 File: H_CRP_SPI_DUMP.xls
 Author: R. Biggins



| Step No. | Time | Activity/Remarks | TC/TLM | Display/ Branch |
|----------|----------------------|--|---|-----------------|
| | ET=+ UT=+00.00.02 | DUMP_MEMORY_RAW DUMP_MEMORY Command Parameter(s) : MEMORYID_DUMPMEM SPM6N500 STARTADDR_DUMPMEM SPM7N500 NSAU_DUMPMEM SPM8N500 Subsch. ID : 370 Det. descr. : DUMP MEMORY USING ABSOLUTE ADDRESSES | SCM01500 0 <hex> 79ca <hex> a6 <hex> | |
| | ET=+ UT=+00.00.02 | DUMP_MEMORY_RAW DUMP_MEMORY Command Parameter(s) : MEMORYID_DUMPMEM SPM6N500 STARTADDR_DUMPMEM SPM7N500 NSAU_DUMPMEM SPM8N500 Subsch. ID : 370 Det. descr. : DUMP MEMORY USING ABSOLUTE ADDRESSES | SCM01500 0 <hex> 7a6f <hex> a6 <hex> | |
| | ET=+ UT=+00.00.02 | DUMP_MEMORY_RAW DUMP_MEMORY Command Parameter(s) : MEMORYID_DUMPMEM SPM6N500 STARTADDR_DUMPMEM SPM7N500 NSAU_DUMPMEM SPM8N500 Subsch. ID : 370 Det. descr. : DUMP MEMORY USING ABSOLUTE ADDRESSES | SCM01500 0 <hex> 7b14 <hex> a6 <hex> | |
| | ET=+ UT=+00.00.02 | DUMP_MEMORY_RAW DUMP_MEMORY Command Parameter(s) : MEMORYID_DUMPMEM SPM6N500 STARTADDR_DUMPMEM SPM7N500 NSAU_DUMPMEM SPM8N500 Subsch. ID : 370 Det. descr. : DUMP MEMORY USING ABSOLUTE ADDRESSES | SCM01500 0 <hex> 7bb9 <hex> a6 <hex> | |
| | ET=+ UT=+00.00.02 | DUMP_MEMORY_RAW DUMP_MEMORY Command Parameter(s) : MEMORYID_DUMPMEM SPM6N500 STARTADDR_DUMPMEM SPM7N500 NSAU_DUMPMEM SPM8N500 Subsch. ID : 370 Det. descr. : DUMP MEMORY USING ABSOLUTE ADDRESSES | SCM01500 0 <hex> 7c5e <hex> a6 <hex> | |

SpireEngSlowPMDump Dump and Check Memory (CRP)
 File: H_CRP_SPI_DUMP.xls
 Author: R. Biggins



| Step No. | Time | Activity/Remarks | TC/TLM | Display/ Branch |
|----------|----------------------|--|---|-----------------|
| | ET=+ UT=+00.00.02 | DUMP_MEMORY_RAW DUMP_MEMORY Command Parameter(s) : MEMORYID_DUMPMEM SPM6N500 STARTADDR_DUMPMEM SPM7N500 NSAU_DUMPMEM SPM8N500 Subsch. ID : 370 Det. descr. : DUMP MEMORY USING ABSOLUTE ADDRESSES | SCM01500 0 <hex> 7d03 <hex> a6 <hex> | |
| | ET=+ UT=+00.00.02 | DUMP_MEMORY_RAW DUMP_MEMORY Command Parameter(s) : MEMORYID_DUMPMEM SPM6N500 STARTADDR_DUMPMEM SPM7N500 NSAU_DUMPMEM SPM8N500 Subsch. ID : 370 Det. descr. : DUMP MEMORY USING ABSOLUTE ADDRESSES | SCM01500 0 <hex> 7da8 <hex> a6 <hex> | |
| | ET=+ UT=+00.00.02 | DUMP_MEMORY_RAW DUMP_MEMORY Command Parameter(s) : MEMORYID_DUMPMEM SPM6N500 STARTADDR_DUMPMEM SPM7N500 NSAU_DUMPMEM SPM8N500 Subsch. ID : 370 Det. descr. : DUMP MEMORY USING ABSOLUTE ADDRESSES | SCM01500 0 <hex> 7e4d <hex> a6 <hex> | |
| | ET=+ UT=+00.00.02 | DUMP_MEMORY_RAW DUMP_MEMORY Command Parameter(s) : MEMORYID_DUMPMEM SPM6N500 STARTADDR_DUMPMEM SPM7N500 NSAU_DUMPMEM SPM8N500 Subsch. ID : 370 Det. descr. : DUMP MEMORY USING ABSOLUTE ADDRESSES | SCM01500 0 <hex> 7ef2 <hex> a6 <hex> | |
| | ET=+ UT=+00.00.02 | DUMP_MEMORY_RAW DUMP_MEMORY Command Parameter(s) : MEMORYID_DUMPMEM SPM6N500 STARTADDR_DUMPMEM SPM7N500 NSAU_DUMPMEM SPM8N500 Subsch. ID : 370 Det. descr. : DUMP MEMORY USING ABSOLUTE ADDRESSES | SCM01500 0 <hex> 7f97 <hex> a6 <hex> | |

SpireEngSlowPMDump Dump and Check Memory (CRP)
 File: H_CRP_SPI_DUMP.xls
 Author: R. Biggins



| Step No. | Time | Activity/Remarks | TC/TLM | Display/ Branch |
|----------|----------------------|--|---|-----------------|
| | ET=+ UT=+00.00.02 | DUMP_MEMORY_RAW DUMP_MEMORY Command Parameter(s) : MEMORYID_DUMPMEM SPM6N500 STARTADDR_DUMPMEM SPM7N500 NSAU_DUMPMEM SPM8N500 Subsch. ID : 370 Det. descr. : DUMP MEMORY USING ABSOLUTE ADDRESSES | SCM01500 0 <hex> 803c <hex> a6 <hex> | |
| | ET=+ UT=+00.00.02 | DUMP_MEMORY_RAW DUMP_MEMORY Command Parameter(s) : MEMORYID_DUMPMEM SPM6N500 STARTADDR_DUMPMEM SPM7N500 NSAU_DUMPMEM SPM8N500 Subsch. ID : 370 Det. descr. : DUMP MEMORY USING ABSOLUTE ADDRESSES | SCM01500 0 <hex> 80e1 <hex> a6 <hex> | |
| | ET=+ UT=+00.00.02 | DUMP_MEMORY_RAW DUMP_MEMORY Command Parameter(s) : MEMORYID_DUMPMEM SPM6N500 STARTADDR_DUMPMEM SPM7N500 NSAU_DUMPMEM SPM8N500 Subsch. ID : 370 Det. descr. : DUMP MEMORY USING ABSOLUTE ADDRESSES | SCM01500 0 <hex> 8186 <hex> a6 <hex> | |
| | ET=+ UT=+00.00.02 | DUMP_MEMORY_RAW DUMP_MEMORY Command Parameter(s) : MEMORYID_DUMPMEM SPM6N500 STARTADDR_DUMPMEM SPM7N500 NSAU_DUMPMEM SPM8N500 Subsch. ID : 370 Det. descr. : DUMP MEMORY USING ABSOLUTE ADDRESSES | SCM01500 0 <hex> 822b <hex> a6 <hex> | |
| | ET=+ UT=+00.00.02 | DUMP_MEMORY_RAW DUMP_MEMORY Command Parameter(s) : MEMORYID_DUMPMEM SPM6N500 STARTADDR_DUMPMEM SPM7N500 NSAU_DUMPMEM SPM8N500 Subsch. ID : 370 Det. descr. : DUMP MEMORY USING ABSOLUTE ADDRESSES | SCM01500 0 <hex> 82d0 <hex> a6 <hex> | |

SpireEngSlowPMDump Dump and Check Memory (CRP)
 File: H_CRP_SPI_DUMP.xls
 Author: R. Biggins



| Step No. | Time | Activity/Remarks | TC/TLM | Display/ Branch |
|----------|----------------------|---|---|-----------------|
| | ET=+ UT=+00.00.02 | DUMP_MEMORY_RAW DUMP_MEMORY Command Parameter(s) : MEMORYID_DUMPMEM SPM6N500 STARTADDR_DUMPMEM SPM7N500 NSAU_DUMPMEM SPM8N500 Subsch. ID : 370 Det. descr. : DUMP MEMORY USING ABSOLUTE ADDRESSES | SCM01500 0 <hex> 8375 <hex> a6 <hex> | |
| | ET=+ UT=+00.00.02 | DUMP_MEMORY_RAW DUMP_MEMORY Command Parameter(s) : MEMORYID_DUMPMEM SPM6N500 STARTADDR_DUMPMEM SPM7N500 NSAU_DUMPMEM SPM8N500 Subsch. ID : 370 Det. descr. : DUMP MEMORY USING ABSOLUTE ADDRESSES | SCM01500 0 <hex> 841a <hex> a6 <hex> | |
| | ET=+ UT=+00.00.02 | DUMP_MEMORY_RAW DUMP_MEMORY Command Parameter(s) : MEMORYID_DUMPMEM SPM6N500 STARTADDR_DUMPMEM SPM7N500 NSAU_DUMPMEM SPM8N500 Subsch. ID : 370 Det. descr. : DUMP MEMORY USING ABSOLUTE ADDRESSES | SCM01500 0 <hex> 84bf <hex> a6 <hex> | |
| | ET=+ UT=+00.00.02 | DUMP_MEMORY_RAW DUMP_MEMORY Command Parameter(s) : MEMORYID_DUMPMEM SPM6N500 STARTADDR_DUMPMEM SPM7N500 NSAU_DUMPMEM SPM8N500 Subsch. ID : 370 Det. descr. : DUMP MEMORY USING ABSOLUTE ADDRESSES | SCM01500 0 <hex> 8564 <hex> a6 <hex> | |
| | ET=+ UT=+00.00.02 | DUMP_MEMORY_RAW DUMP_MEMORY Command Parameter(s) : MEMORYID_DUMPMEM SPM6N500 STARTADDR_DUMPMEM SPM7N500 NSAU_DUMPMEM SPM8N500 Subsch. ID : 370 Det. descr. : DUMP MEMORY USING ABSOLUTE ADDRESSES | SCM01500 0 <hex> 8609 <hex> a6 <hex> | |

SpireEngSlowPMDump Dump and Check Memory (CRP)
 File: H_CRP_SPI_DUMP.xls
 Author: R. Biggins



| Step No. | Time | Activity/Remarks | TC/TLM | Display/ Branch |
|----------|----------------------|--|---|-----------------|
| | ET=+ UT=+00.00.02 | DUMP_MEMORY_RAW DUMP_MEMORY Command Parameter(s) : MEMORYID_DUMPMEM SPM6N500 STARTADDR_DUMPMEM SPM7N500 NSAU_DUMPMEM SPM8N500 Subsch. ID : 370 Det. descr. : DUMP MEMORY USING ABSOLUTE ADDRESSES | SCM01500 0 <hex> 86ae <hex> a6 <hex> | |
| | ET=+ UT=+00.00.02 | DUMP_MEMORY_RAW DUMP_MEMORY Command Parameter(s) : MEMORYID_DUMPMEM SPM6N500 STARTADDR_DUMPMEM SPM7N500 NSAU_DUMPMEM SPM8N500 Subsch. ID : 370 Det. descr. : DUMP MEMORY USING ABSOLUTE ADDRESSES | SCM01500 0 <hex> 8753 <hex> a6 <hex> | |
| | ET=+ UT=+00.00.02 | DUMP_MEMORY_RAW DUMP_MEMORY Command Parameter(s) : MEMORYID_DUMPMEM SPM6N500 STARTADDR_DUMPMEM SPM7N500 NSAU_DUMPMEM SPM8N500 Subsch. ID : 370 Det. descr. : DUMP MEMORY USING ABSOLUTE ADDRESSES | SCM01500 0 <hex> 87f8 <hex> a6 <hex> | |
| | ET=+ UT=+00.00.02 | DUMP_MEMORY_RAW DUMP_MEMORY Command Parameter(s) : MEMORYID_DUMPMEM SPM6N500 STARTADDR_DUMPMEM SPM7N500 NSAU_DUMPMEM SPM8N500 Subsch. ID : 370 Det. descr. : DUMP MEMORY USING ABSOLUTE ADDRESSES | SCM01500 0 <hex> 889d <hex> a6 <hex> | |
| | ET=+ UT=+00.00.02 | DUMP_MEMORY_RAW DUMP_MEMORY Command Parameter(s) : MEMORYID_DUMPMEM SPM6N500 STARTADDR_DUMPMEM SPM7N500 NSAU_DUMPMEM SPM8N500 Subsch. ID : 370 Det. descr. : DUMP MEMORY USING ABSOLUTE ADDRESSES | SCM01500 0 <hex> 8942 <hex> a6 <hex> | |

SpireEngSlowPMDump Dump and Check Memory (CRP)
 File: H_CRP_SPI_DUMP.xls
 Author: R. Biggins



| Step No. | Time | Activity/Remarks | TC/TLM | Display/ Branch |
|----------|----------------------|--|---|-----------------|
| | ET=+ UT=+00.00.02 | DUMP_MEMORY_RAW DUMP_MEMORY Command Parameter(s) : MEMORYID_DUMPMEM SPM6N500 STARTADDR_DUMPMEM SPM7N500 NSAU_DUMPMEM SPM8N500 Subsch. ID : 370 Det. descr. : DUMP MEMORY USING ABSOLUTE ADDRESSES | SCM01500 0 <hex> 89e7 <hex> a6 <hex> | |
| | ET=+ UT=+00.00.02 | DUMP_MEMORY_RAW DUMP_MEMORY Command Parameter(s) : MEMORYID_DUMPMEM SPM6N500 STARTADDR_DUMPMEM SPM7N500 NSAU_DUMPMEM SPM8N500 Subsch. ID : 370 Det. descr. : DUMP MEMORY USING ABSOLUTE ADDRESSES | SCM01500 0 <hex> 8a8c <hex> a6 <hex> | |
| | ET=+ UT=+00.00.02 | DUMP_MEMORY_RAW DUMP_MEMORY Command Parameter(s) : MEMORYID_DUMPMEM SPM6N500 STARTADDR_DUMPMEM SPM7N500 NSAU_DUMPMEM SPM8N500 Subsch. ID : 370 Det. descr. : DUMP MEMORY USING ABSOLUTE ADDRESSES | SCM01500 0 <hex> 8b31 <hex> a6 <hex> | |
| | ET=+ UT=+00.00.02 | DUMP_MEMORY_RAW DUMP_MEMORY Command Parameter(s) : MEMORYID_DUMPMEM SPM6N500 STARTADDR_DUMPMEM SPM7N500 NSAU_DUMPMEM SPM8N500 Subsch. ID : 370 Det. descr. : DUMP MEMORY USING ABSOLUTE ADDRESSES | SCM01500 0 <hex> 8bd6 <hex> a6 <hex> | |
| | ET=+ UT=+00.00.02 | DUMP_MEMORY_RAW DUMP_MEMORY Command Parameter(s) : MEMORYID_DUMPMEM SPM6N500 STARTADDR_DUMPMEM SPM7N500 NSAU_DUMPMEM SPM8N500 Subsch. ID : 370 Det. descr. : DUMP MEMORY USING ABSOLUTE ADDRESSES | SCM01500 0 <hex> 8c7b <hex> a6 <hex> | |

SpireEngSlowPMDump Dump and Check Memory (CRP)
 File: H_CRP_SPI_DUMP.xls
 Author: R. Biggins



| Step No. | Time | Activity/Remarks | TC/TLM | Display/ Branch |
|----------|----------------------|--|---|-----------------|
| | ET=+ UT=+00.00.02 | DUMP_MEMORY_RAW DUMP_MEMORY Command Parameter(s) : MEMORYID_DUMPMEM SPM6N500 STARTADDR_DUMPMEM SPM7N500 NSAU_DUMPMEM SPM8N500 Subsch. ID : 370 Det. descr. : DUMP MEMORY USING ABSOLUTE ADDRESSES | SCM01500 0 <hex> 8d20 <hex> a6 <hex> | |
| | ET=+ UT=+00.00.02 | DUMP_MEMORY_RAW DUMP_MEMORY Command Parameter(s) : MEMORYID_DUMPMEM SPM6N500 STARTADDR_DUMPMEM SPM7N500 NSAU_DUMPMEM SPM8N500 Subsch. ID : 370 Det. descr. : DUMP MEMORY USING ABSOLUTE ADDRESSES | SCM01500 0 <hex> 8dc5 <hex> a6 <hex> | |
| | ET=+ UT=+00.00.02 | DUMP_MEMORY_RAW DUMP_MEMORY Command Parameter(s) : MEMORYID_DUMPMEM SPM6N500 STARTADDR_DUMPMEM SPM7N500 NSAU_DUMPMEM SPM8N500 Subsch. ID : 370 Det. descr. : DUMP MEMORY USING ABSOLUTE ADDRESSES | SCM01500 0 <hex> 8e6a <hex> a6 <hex> | |
| | ET=+ UT=+00.00.02 | DUMP_MEMORY_RAW DUMP_MEMORY Command Parameter(s) : MEMORYID_DUMPMEM SPM6N500 STARTADDR_DUMPMEM SPM7N500 NSAU_DUMPMEM SPM8N500 Subsch. ID : 370 Det. descr. : DUMP MEMORY USING ABSOLUTE ADDRESSES | SCM01500 0 <hex> 8f0f <hex> a6 <hex> | |
| | ET=+ UT=+00.00.02 | DUMP_MEMORY_RAW DUMP_MEMORY Command Parameter(s) : MEMORYID_DUMPMEM SPM6N500 STARTADDR_DUMPMEM SPM7N500 NSAU_DUMPMEM SPM8N500 Subsch. ID : 370 Det. descr. : DUMP MEMORY USING ABSOLUTE ADDRESSES | SCM01500 0 <hex> 8fb4 <hex> a6 <hex> | |

SpireEngSlowPMDump Dump and Check Memory (CRP)
 File: H_CRP_SPI_DUMP.xls
 Author: R. Biggins



| Step No. | Time | Activity/Remarks | TC/TLM | Display/ Branch |
|----------|----------------------|--|---|-----------------|
| | ET=+ UT=+00.00.02 | DUMP_MEMORY_RAW DUMP_MEMORY Command Parameter(s) : MEMORYID_DUMPMEM SPM6N500 STARTADDR_DUMPMEM SPM7N500 NSAU_DUMPMEM SPM8N500 Subsch. ID : 370 Det. descr. : DUMP MEMORY USING ABSOLUTE ADDRESSES | SCM01500 0 <hex> 9059 <hex> a6 <hex> | |
| | ET=+ UT=+00.00.02 | DUMP_MEMORY_RAW DUMP_MEMORY Command Parameter(s) : MEMORYID_DUMPMEM SPM6N500 STARTADDR_DUMPMEM SPM7N500 NSAU_DUMPMEM SPM8N500 Subsch. ID : 370 Det. descr. : DUMP MEMORY USING ABSOLUTE ADDRESSES | SCM01500 0 <hex> 90fe <hex> a6 <hex> | |
| | ET=+ UT=+00.00.02 | DUMP_MEMORY_RAW DUMP_MEMORY Command Parameter(s) : MEMORYID_DUMPMEM SPM6N500 STARTADDR_DUMPMEM SPM7N500 NSAU_DUMPMEM SPM8N500 Subsch. ID : 370 Det. descr. : DUMP MEMORY USING ABSOLUTE ADDRESSES | SCM01500 0 <hex> 91a3 <hex> a6 <hex> | |
| | ET=+ UT=+00.00.02 | DUMP_MEMORY_RAW DUMP_MEMORY Command Parameter(s) : MEMORYID_DUMPMEM SPM6N500 STARTADDR_DUMPMEM SPM7N500 NSAU_DUMPMEM SPM8N500 Subsch. ID : 370 Det. descr. : DUMP MEMORY USING ABSOLUTE ADDRESSES | SCM01500 0 <hex> 9248 <hex> a6 <hex> | |
| | ET=+ UT=+00.00.02 | DUMP_MEMORY_RAW DUMP_MEMORY Command Parameter(s) : MEMORYID_DUMPMEM SPM6N500 STARTADDR_DUMPMEM SPM7N500 NSAU_DUMPMEM SPM8N500 Subsch. ID : 370 Det. descr. : DUMP MEMORY USING ABSOLUTE ADDRESSES | SCM01500 0 <hex> 92ed <hex> a6 <hex> | |

SpireEngSlowPMDump Dump and Check Memory (CRP)
 File: H_CRP_SPI_DUMP.xls
 Author: R. Biggins



| Step No. | Time | Activity/Remarks | TC/TLM | Display/ Branch |
|----------|----------------------|--|---|-----------------|
| | ET=+ UT=+00.00.02 | DUMP_MEMORY_RAW DUMP_MEMORY Command Parameter(s) : MEMORYID_DUMPMEM SPM6N500 STARTADDR_DUMPMEM SPM7N500 NSAU_DUMPMEM SPM8N500 Subsch. ID : 370 Det. descr. : DUMP MEMORY USING ABSOLUTE ADDRESSES | SCM01500 0 <hex> 9392 <hex> a6 <hex> | |
| | ET=+ UT=+00.00.02 | DUMP_MEMORY_RAW DUMP_MEMORY Command Parameter(s) : MEMORYID_DUMPMEM SPM6N500 STARTADDR_DUMPMEM SPM7N500 NSAU_DUMPMEM SPM8N500 Subsch. ID : 370 Det. descr. : DUMP MEMORY USING ABSOLUTE ADDRESSES | SCM01500 0 <hex> 9437 <hex> a6 <hex> | |
| | ET=+ UT=+00.00.02 | DUMP_MEMORY_RAW DUMP_MEMORY Command Parameter(s) : MEMORYID_DUMPMEM SPM6N500 STARTADDR_DUMPMEM SPM7N500 NSAU_DUMPMEM SPM8N500 Subsch. ID : 370 Det. descr. : DUMP MEMORY USING ABSOLUTE ADDRESSES | SCM01500 0 <hex> 94dc <hex> a6 <hex> | |
| | ET=+ UT=+00.00.02 | DUMP_MEMORY_RAW DUMP_MEMORY Command Parameter(s) : MEMORYID_DUMPMEM SPM6N500 STARTADDR_DUMPMEM SPM7N500 NSAU_DUMPMEM SPM8N500 Subsch. ID : 370 Det. descr. : DUMP MEMORY USING ABSOLUTE ADDRESSES | SCM01500 0 <hex> 9581 <hex> a6 <hex> | |
| | ET=+ UT=+00.00.02 | DUMP_MEMORY_RAW DUMP_MEMORY Command Parameter(s) : MEMORYID_DUMPMEM SPM6N500 STARTADDR_DUMPMEM SPM7N500 NSAU_DUMPMEM SPM8N500 Subsch. ID : 370 Det. descr. : DUMP MEMORY USING ABSOLUTE ADDRESSES | SCM01500 0 <hex> 9626 <hex> a6 <hex> | |

SpireEngSlowPMDump Dump and Check Memory (CRP)
 File: H_CRP_SPI_DUMP.xls
 Author: R. Biggins



| Step No. | Time | Activity/Remarks | TC/TLM | Display/ Branch |
|----------|----------------------|--|---|-----------------|
| | ET=+ UT=+00.00.02 | DUMP_MEMORY_RAW DUMP_MEMORY Command Parameter(s) : MEMORYID_DUMPMEM SPM6N500 STARTADDR_DUMPMEM SPM7N500 NSAU_DUMPMEM SPM8N500 Subsch. ID : 370 Det. descr. : DUMP MEMORY USING ABSOLUTE ADDRESSES | SCM01500 0 <hex> 96cb <hex> a6 <hex> | |
| | ET=+ UT=+00.00.02 | DUMP_MEMORY_RAW DUMP_MEMORY Command Parameter(s) : MEMORYID_DUMPMEM SPM6N500 STARTADDR_DUMPMEM SPM7N500 NSAU_DUMPMEM SPM8N500 Subsch. ID : 370 Det. descr. : DUMP MEMORY USING ABSOLUTE ADDRESSES | SCM01500 0 <hex> 9770 <hex> a6 <hex> | |
| | ET=+ UT=+00.00.02 | DUMP_MEMORY_RAW DUMP_MEMORY Command Parameter(s) : MEMORYID_DUMPMEM SPM6N500 STARTADDR_DUMPMEM SPM7N500 NSAU_DUMPMEM SPM8N500 Subsch. ID : 370 Det. descr. : DUMP MEMORY USING ABSOLUTE ADDRESSES | SCM01500 0 <hex> 9815 <hex> a6 <hex> | |
| | ET=+ UT=+00.00.02 | DUMP_MEMORY_RAW DUMP_MEMORY Command Parameter(s) : MEMORYID_DUMPMEM SPM6N500 STARTADDR_DUMPMEM SPM7N500 NSAU_DUMPMEM SPM8N500 Subsch. ID : 370 Det. descr. : DUMP MEMORY USING ABSOLUTE ADDRESSES | SCM01500 0 <hex> 98ba <hex> a6 <hex> | |
| | ET=+ UT=+00.00.02 | DUMP_MEMORY_RAW DUMP_MEMORY Command Parameter(s) : MEMORYID_DUMPMEM SPM6N500 STARTADDR_DUMPMEM SPM7N500 NSAU_DUMPMEM SPM8N500 Subsch. ID : 370 Det. descr. : DUMP MEMORY USING ABSOLUTE ADDRESSES | SCM01500 0 <hex> 995f <hex> a6 <hex> | |

SpireEngSlowPMDump Dump and Check Memory (CRP)
 File: H_CRP_SPI_DUMP.xls
 Author: R. Biggins



| Step No. | Time | Activity/Remarks | TC/TLM | Display/ Branch |
|----------|----------------------|--|---|-----------------|
| | ET=+ UT=+00.00.02 | DUMP_MEMORY_RAW DUMP_MEMORY Command Parameter(s) : MEMORYID_DUMPMEM SPM6N500 STARTADDR_DUMPMEM SPM7N500 NSAU_DUMPMEM SPM8N500 Subsch. ID : 370 Det. descr. : DUMP MEMORY USING ABSOLUTE ADDRESSES | SCM01500 0 <hex> 9a04 <hex> a6 <hex> | |
| | ET=+ UT=+00.00.02 | DUMP_MEMORY_RAW DUMP_MEMORY Command Parameter(s) : MEMORYID_DUMPMEM SPM6N500 STARTADDR_DUMPMEM SPM7N500 NSAU_DUMPMEM SPM8N500 Subsch. ID : 370 Det. descr. : DUMP MEMORY USING ABSOLUTE ADDRESSES | SCM01500 0 <hex> 9aa9 <hex> a6 <hex> | |
| | ET=+ UT=+00.00.02 | DUMP_MEMORY_RAW DUMP_MEMORY Command Parameter(s) : MEMORYID_DUMPMEM SPM6N500 STARTADDR_DUMPMEM SPM7N500 NSAU_DUMPMEM SPM8N500 Subsch. ID : 370 Det. descr. : DUMP MEMORY USING ABSOLUTE ADDRESSES | SCM01500 0 <hex> 9b4e <hex> a6 <hex> | |
| | ET=+ UT=+00.00.02 | DUMP_MEMORY_RAW DUMP_MEMORY Command Parameter(s) : MEMORYID_DUMPMEM SPM6N500 STARTADDR_DUMPMEM SPM7N500 NSAU_DUMPMEM SPM8N500 Subsch. ID : 370 Det. descr. : DUMP MEMORY USING ABSOLUTE ADDRESSES | SCM01500 0 <hex> 9bf3 <hex> a6 <hex> | |
| | ET=+ UT=+00.00.02 | DUMP_MEMORY_RAW DUMP_MEMORY Command Parameter(s) : MEMORYID_DUMPMEM SPM6N500 STARTADDR_DUMPMEM SPM7N500 NSAU_DUMPMEM SPM8N500 Subsch. ID : 370 Det. descr. : DUMP MEMORY USING ABSOLUTE ADDRESSES | SCM01500 0 <hex> 9c98 <hex> a6 <hex> | |

SpireEngSlowPMDump Dump and Check Memory (CRP)
 File: H_CRP_SPI_DUMP.xls
 Author: R. Biggins



| Step No. | Time | Activity/Remarks | TC/TLM | Display/ Branch |
|----------|----------------------|--|---|-----------------|
| | ET=+ UT=+00.00.02 | DUMP_MEMORY_RAW DUMP_MEMORY Command Parameter(s) : MEMORYID_DUMPMEM SPM6N500 STARTADDR_DUMPMEM SPM7N500 NSAU_DUMPMEM SPM8N500 Subsch. ID : 370 Det. descr. : DUMP MEMORY USING ABSOLUTE ADDRESSES | SCM01500 0 <hex> 9d3d <hex> a6 <hex> | |
| | ET=+ UT=+00.00.02 | DUMP_MEMORY_RAW DUMP_MEMORY Command Parameter(s) : MEMORYID_DUMPMEM SPM6N500 STARTADDR_DUMPMEM SPM7N500 NSAU_DUMPMEM SPM8N500 Subsch. ID : 370 Det. descr. : DUMP MEMORY USING ABSOLUTE ADDRESSES | SCM01500 0 <hex> 9de2 <hex> a6 <hex> | |
| | ET=+ UT=+00.00.02 | DUMP_MEMORY_RAW DUMP_MEMORY Command Parameter(s) : MEMORYID_DUMPMEM SPM6N500 STARTADDR_DUMPMEM SPM7N500 NSAU_DUMPMEM SPM8N500 Subsch. ID : 370 Det. descr. : DUMP MEMORY USING ABSOLUTE ADDRESSES | SCM01500 0 <hex> 9e87 <hex> a6 <hex> | |
| | ET=+ UT=+00.00.02 | DUMP_MEMORY_RAW DUMP_MEMORY Command Parameter(s) : MEMORYID_DUMPMEM SPM6N500 STARTADDR_DUMPMEM SPM7N500 NSAU_DUMPMEM SPM8N500 Subsch. ID : 370 Det. descr. : DUMP MEMORY USING ABSOLUTE ADDRESSES | SCM01500 0 <hex> 9f2c <hex> a6 <hex> | |
| | ET=+ UT=+00.00.02 | DUMP_MEMORY_RAW DUMP_MEMORY Command Parameter(s) : MEMORYID_DUMPMEM SPM6N500 STARTADDR_DUMPMEM SPM7N500 NSAU_DUMPMEM SPM8N500 Subsch. ID : 370 Det. descr. : DUMP MEMORY USING ABSOLUTE ADDRESSES | SCM01500 0 <hex> 9fd1 <hex> a6 <hex> | |

SpireEngSlowPMDump Dump and Check Memory (CRP)
 File: H_CRP_SPI_DUMP.xls
 Author: R. Biggins



| Step No. | Time | Activity/Remarks | TC/TLM | Display/ Branch |
|----------|----------------------|--|---|-----------------|
| | ET=+ UT=+00.00.02 | DUMP_MEMORY_RAW DUMP_MEMORY Command Parameter(s) : MEMORYID_DUMPMEM SPM6N500 STARTADDR_DUMPMEM SPM7N500 NSAU_DUMPMEM SPM8N500 Subsch. ID : 370 Det. descr. : DUMP MEMORY USING ABSOLUTE ADDRESSES | SCM01500 0 <hex> a076 <hex> a6 <hex> | |
| | ET=+ UT=+00.00.02 | DUMP_MEMORY_RAW DUMP_MEMORY Command Parameter(s) : MEMORYID_DUMPMEM SPM6N500 STARTADDR_DUMPMEM SPM7N500 NSAU_DUMPMEM SPM8N500 Subsch. ID : 370 Det. descr. : DUMP MEMORY USING ABSOLUTE ADDRESSES | SCM01500 0 <hex> a11b <hex> a6 <hex> | |
| | ET=+ UT=+00.00.02 | DUMP_MEMORY_RAW DUMP_MEMORY Command Parameter(s) : MEMORYID_DUMPMEM SPM6N500 STARTADDR_DUMPMEM SPM7N500 NSAU_DUMPMEM SPM8N500 Subsch. ID : 370 Det. descr. : DUMP MEMORY USING ABSOLUTE ADDRESSES | SCM01500 0 <hex> a1c0 <hex> a6 <hex> | |
| | ET=+ UT=+00.00.02 | DUMP_MEMORY_RAW DUMP_MEMORY Command Parameter(s) : MEMORYID_DUMPMEM SPM6N500 STARTADDR_DUMPMEM SPM7N500 NSAU_DUMPMEM SPM8N500 Subsch. ID : 370 Det. descr. : DUMP MEMORY USING ABSOLUTE ADDRESSES | SCM01500 0 <hex> a265 <hex> a6 <hex> | |
| | ET=+ UT=+00.00.02 | DUMP_MEMORY_RAW DUMP_MEMORY Command Parameter(s) : MEMORYID_DUMPMEM SPM6N500 STARTADDR_DUMPMEM SPM7N500 NSAU_DUMPMEM SPM8N500 Subsch. ID : 370 Det. descr. : DUMP MEMORY USING ABSOLUTE ADDRESSES | SCM01500 0 <hex> a30a <hex> a6 <hex> | |

SpireEngSlowPMDump Dump and Check Memory (CRP)
 File: H_CRP_SPI_DUMP.xls
 Author: R. Biggins



| Step No. | Time | Activity/Remarks | TC/TLM | Display/ Branch |
|----------|----------------------|--|---|-----------------|
| | ET=+ UT=+00.00.02 | DUMP_MEMORY_RAW DUMP_MEMORY Command Parameter(s) : MEMORYID_DUMPMEM SPM6N500 STARTADDR_DUMPMEM SPM7N500 NSAU_DUMPMEM SPM8N500 Subsch. ID : 370 Det. descr. : DUMP MEMORY USING ABSOLUTE ADDRESSES | SCM01500 0 <hex> a3af <hex> a6 <hex> | |
| | ET=+ UT=+00.00.02 | DUMP_MEMORY_RAW DUMP_MEMORY Command Parameter(s) : MEMORYID_DUMPMEM SPM6N500 STARTADDR_DUMPMEM SPM7N500 NSAU_DUMPMEM SPM8N500 Subsch. ID : 370 Det. descr. : DUMP MEMORY USING ABSOLUTE ADDRESSES | SCM01500 0 <hex> a454 <hex> a6 <hex> | |
| | ET=+ UT=+00.00.02 | DUMP_MEMORY_RAW DUMP_MEMORY Command Parameter(s) : MEMORYID_DUMPMEM SPM6N500 STARTADDR_DUMPMEM SPM7N500 NSAU_DUMPMEM SPM8N500 Subsch. ID : 370 Det. descr. : DUMP MEMORY USING ABSOLUTE ADDRESSES | SCM01500 0 <hex> a4f9 <hex> a6 <hex> | |
| | ET=+ UT=+00.00.02 | DUMP_MEMORY_RAW DUMP_MEMORY Command Parameter(s) : MEMORYID_DUMPMEM SPM6N500 STARTADDR_DUMPMEM SPM7N500 NSAU_DUMPMEM SPM8N500 Subsch. ID : 370 Det. descr. : DUMP MEMORY USING ABSOLUTE ADDRESSES | SCM01500 0 <hex> a59e <hex> a6 <hex> | |
| | ET=+ UT=+00.00.02 | DUMP_MEMORY_RAW DUMP_MEMORY Command Parameter(s) : MEMORYID_DUMPMEM SPM6N500 STARTADDR_DUMPMEM SPM7N500 NSAU_DUMPMEM SPM8N500 Subsch. ID : 370 Det. descr. : DUMP MEMORY USING ABSOLUTE ADDRESSES | SCM01500 0 <hex> a643 <hex> a6 <hex> | |

SpireEngSlowPMDump Dump and Check Memory (CRP)
 File: H_CRP_SPI_DUMP.xls
 Author: R. Biggins



| Step No. | Time | Activity/Remarks | TC/TLM | Display/ Branch |
|----------|----------------------|--|---|-----------------|
| | ET=+ UT=+00.00.02 | DUMP_MEMORY_RAW DUMP_MEMORY Command Parameter(s) : MEMORYID_DUMPMEM SPM6N500 STARTADDR_DUMPMEM SPM7N500 NSAU_DUMPMEM SPM8N500 Subsch. ID : 370 Det. descr. : DUMP MEMORY USING ABSOLUTE ADDRESSES | SCM01500 0 <hex> a6e8 <hex> a6 <hex> | |
| | ET=+ UT=+00.00.02 | DUMP_MEMORY_RAW DUMP_MEMORY Command Parameter(s) : MEMORYID_DUMPMEM SPM6N500 STARTADDR_DUMPMEM SPM7N500 NSAU_DUMPMEM SPM8N500 Subsch. ID : 370 Det. descr. : DUMP MEMORY USING ABSOLUTE ADDRESSES | SCM01500 0 <hex> a78d <hex> a6 <hex> | |
| | ET=+ UT=+00.00.02 | DUMP_MEMORY_RAW DUMP_MEMORY Command Parameter(s) : MEMORYID_DUMPMEM SPM6N500 STARTADDR_DUMPMEM SPM7N500 NSAU_DUMPMEM SPM8N500 Subsch. ID : 370 Det. descr. : DUMP MEMORY USING ABSOLUTE ADDRESSES | SCM01500 0 <hex> a832 <hex> a6 <hex> | |
| | ET=+ UT=+00.00.02 | DUMP_MEMORY_RAW DUMP_MEMORY Command Parameter(s) : MEMORYID_DUMPMEM SPM6N500 STARTADDR_DUMPMEM SPM7N500 NSAU_DUMPMEM SPM8N500 Subsch. ID : 370 Det. descr. : DUMP MEMORY USING ABSOLUTE ADDRESSES | SCM01500 0 <hex> a8d7 <hex> a6 <hex> | |
| | ET=+ UT=+00.00.02 | DUMP_MEMORY_RAW DUMP_MEMORY Command Parameter(s) : MEMORYID_DUMPMEM SPM6N500 STARTADDR_DUMPMEM SPM7N500 NSAU_DUMPMEM SPM8N500 Subsch. ID : 370 Det. descr. : DUMP MEMORY USING ABSOLUTE ADDRESSES | SCM01500 0 <hex> a97c <hex> a6 <hex> | |

SpireEngSlowPMDump Dump and Check Memory (CRP)
 File: H_CRP_SPI_DUMP.xls
 Author: R. Biggins



| Step No. | Time | Activity/Remarks | TC/TLM | Display/ Branch |
|----------|----------------------|--|---|-----------------|
| | ET=+ UT=+00.00.02 | DUMP_MEMORY_RAW DUMP_MEMORY Command Parameter(s) : MEMORYID_DUMPMEM SPM6N500 STARTADDR_DUMPMEM SPM7N500 NSAU_DUMPMEM SPM8N500 Subsch. ID : 370 Det. descr. : DUMP MEMORY USING ABSOLUTE ADDRESSES | SCM01500 0 <hex> aa21 <hex> a6 <hex> | |
| | ET=+ UT=+00.00.02 | DUMP_MEMORY_RAW DUMP_MEMORY Command Parameter(s) : MEMORYID_DUMPMEM SPM6N500 STARTADDR_DUMPMEM SPM7N500 NSAU_DUMPMEM SPM8N500 Subsch. ID : 370 Det. descr. : DUMP MEMORY USING ABSOLUTE ADDRESSES | SCM01500 0 <hex> aac6 <hex> a6 <hex> | |
| | ET=+ UT=+00.00.02 | DUMP_MEMORY_RAW DUMP_MEMORY Command Parameter(s) : MEMORYID_DUMPMEM SPM6N500 STARTADDR_DUMPMEM SPM7N500 NSAU_DUMPMEM SPM8N500 Subsch. ID : 370 Det. descr. : DUMP MEMORY USING ABSOLUTE ADDRESSES | SCM01500 0 <hex> ab6b <hex> a6 <hex> | |
| | ET=+ UT=+00.00.02 | DUMP_MEMORY_RAW DUMP_MEMORY Command Parameter(s) : MEMORYID_DUMPMEM SPM6N500 STARTADDR_DUMPMEM SPM7N500 NSAU_DUMPMEM SPM8N500 Subsch. ID : 370 Det. descr. : DUMP MEMORY USING ABSOLUTE ADDRESSES | SCM01500 0 <hex> ac10 <hex> a6 <hex> | |
| | ET=+ UT=+00.00.02 | DUMP_MEMORY_RAW DUMP_MEMORY Command Parameter(s) : MEMORYID_DUMPMEM SPM6N500 STARTADDR_DUMPMEM SPM7N500 NSAU_DUMPMEM SPM8N500 Subsch. ID : 370 Det. descr. : DUMP MEMORY USING ABSOLUTE ADDRESSES | SCM01500 0 <hex> acb5 <hex> a6 <hex> | |

SpireEngSlowPMDump Dump and Check Memory (CRP)
 File: H_CRP_SPI_DUMP.xls
 Author: R. Biggins



| Step No. | Time | Activity/Remarks | TC/TLM | Display/ Branch |
|----------|----------------------|---|---|-----------------|
| | ET=+ UT=+00.00.02 | DUMP_MEMORY_RAW DUMP_MEMORY Command Parameter(s) : MEMORYID_DUMPMEM SPM6N500 STARTADDR_DUMPMEM SPM7N500 NSAU_DUMPMEM SPM8N500 Subsch. ID : 370 Det. descr. : DUMP MEMORY USING ABSOLUTE ADDRESSES | SCM01500 0 <hex> ad5a <hex> a6 <hex> | |
| | ET=+ UT=+00.00.02 | DUMP_MEMORY_RAW DUMP_MEMORY Command Parameter(s) : MEMORYID_DUMPMEM SPM6N500 STARTADDR_DUMPMEM SPM7N500 NSAU_DUMPMEM SPM8N500 Subsch. ID : 370 Det. descr. : DUMP MEMORY USING ABSOLUTE ADDRESSES | SCM01500 0 <hex> adff <hex> a6 <hex> | |
| | ET=+ UT=+00.00.02 | DUMP_MEMORY_RAW DUMP_MEMORY Command Parameter(s) : MEMORYID_DUMPMEM SPM6N500 STARTADDR_DUMPMEM SPM7N500 NSAU_DUMPMEM SPM8N500 Subsch. ID : 370 Det. descr. : DUMP MEMORY USING ABSOLUTE ADDRESSES | SCM01500 0 <hex> aea4 <hex> a6 <hex> | |
| | ET=+ UT=+00.00.02 | DUMP_MEMORY_RAW DUMP_MEMORY Command Parameter(s) : MEMORYID_DUMPMEM SPM6N500 STARTADDR_DUMPMEM SPM7N500 NSAU_DUMPMEM SPM8N500 Subsch. ID : 370 Det. descr. : DUMP MEMORY USING ABSOLUTE ADDRESSES | SCM01500 0 <hex> af49 <hex> a6 <hex> | |
| | ET=+ UT=+00.00.02 | DUMP_MEMORY_RAW DUMP_MEMORY Command Parameter(s) : MEMORYID_DUMPMEM SPM6N500 STARTADDR_DUMPMEM SPM7N500 NSAU_DUMPMEM SPM8N500 Subsch. ID : 370 Det. descr. : DUMP MEMORY USING ABSOLUTE ADDRESSES | SCM01500 0 <hex> afee <hex> a6 <hex> | |

SpireEngSlowPMDump Dump and Check Memory (CRP)
 File: H_CRP_SPI_DUMP.xls
 Author: R. Biggins



| Step No. | Time | Activity/Remarks | TC/TLM | Display/ Branch |
|----------|----------------------|--|---|-----------------|
| | ET=+ UT=+00.00.02 | DUMP_MEMORY_RAW DUMP_MEMORY Command Parameter(s) : MEMORYID_DUMPMEM SPM6N500 STARTADDR_DUMPMEM SPM7N500 NSAU_DUMPMEM SPM8N500 Subsch. ID : 370 Det. descr. : DUMP MEMORY USING ABSOLUTE ADDRESSES | SCM01500 0 <hex> b093 <hex> a6 <hex> | |
| | ET=+ UT=+00.00.02 | DUMP_MEMORY_RAW DUMP_MEMORY Command Parameter(s) : MEMORYID_DUMPMEM SPM6N500 STARTADDR_DUMPMEM SPM7N500 NSAU_DUMPMEM SPM8N500 Subsch. ID : 370 Det. descr. : DUMP MEMORY USING ABSOLUTE ADDRESSES | SCM01500 0 <hex> b138 <hex> a6 <hex> | |
| | ET=+ UT=+00.00.02 | DUMP_MEMORY_RAW DUMP_MEMORY Command Parameter(s) : MEMORYID_DUMPMEM SPM6N500 STARTADDR_DUMPMEM SPM7N500 NSAU_DUMPMEM SPM8N500 Subsch. ID : 370 Det. descr. : DUMP MEMORY USING ABSOLUTE ADDRESSES | SCM01500 0 <hex> b1dd <hex> a6 <hex> | |
| | ET=+ UT=+00.00.02 | DUMP_MEMORY_RAW DUMP_MEMORY Command Parameter(s) : MEMORYID_DUMPMEM SPM6N500 STARTADDR_DUMPMEM SPM7N500 NSAU_DUMPMEM SPM8N500 Subsch. ID : 370 Det. descr. : DUMP MEMORY USING ABSOLUTE ADDRESSES | SCM01500 0 <hex> b282 <hex> a6 <hex> | |
| | ET=+ UT=+00.00.02 | DUMP_MEMORY_RAW DUMP_MEMORY Command Parameter(s) : MEMORYID_DUMPMEM SPM6N500 STARTADDR_DUMPMEM SPM7N500 NSAU_DUMPMEM SPM8N500 Subsch. ID : 370 Det. descr. : DUMP MEMORY USING ABSOLUTE ADDRESSES | SCM01500 0 <hex> b327 <hex> a6 <hex> | |

SpireEngSlowPMDump Dump and Check Memory (CRP)
 File: H_CRP_SPI_DUMP.xls
 Author: R. Biggins



| Step No. | Time | Activity/Remarks | TC/TLM | Display/ Branch |
|----------|----------------------|--|---|-----------------|
| | ET=+ UT=+00.00.02 | DUMP_MEMORY_RAW DUMP_MEMORY Command Parameter(s) : MEMORYID_DUMPMEM SPM6N500 STARTADDR_DUMPMEM SPM7N500 NSAU_DUMPMEM SPM8N500 Subsch. ID : 370 Det. descr. : DUMP MEMORY USING ABSOLUTE ADDRESSES | SCM01500 0 <hex> b3cc <hex> a6 <hex> | |
| | ET=+ UT=+00.00.02 | DUMP_MEMORY_RAW DUMP_MEMORY Command Parameter(s) : MEMORYID_DUMPMEM SPM6N500 STARTADDR_DUMPMEM SPM7N500 NSAU_DUMPMEM SPM8N500 Subsch. ID : 370 Det. descr. : DUMP MEMORY USING ABSOLUTE ADDRESSES | SCM01500 0 <hex> b471 <hex> a6 <hex> | |
| | ET=+ UT=+00.00.02 | DUMP_MEMORY_RAW DUMP_MEMORY Command Parameter(s) : MEMORYID_DUMPMEM SPM6N500 STARTADDR_DUMPMEM SPM7N500 NSAU_DUMPMEM SPM8N500 Subsch. ID : 370 Det. descr. : DUMP MEMORY USING ABSOLUTE ADDRESSES | SCM01500 0 <hex> b516 <hex> a6 <hex> | |
| | ET=+ UT=+00.00.02 | DUMP_MEMORY_RAW DUMP_MEMORY Command Parameter(s) : MEMORYID_DUMPMEM SPM6N500 STARTADDR_DUMPMEM SPM7N500 NSAU_DUMPMEM SPM8N500 Subsch. ID : 370 Det. descr. : DUMP MEMORY USING ABSOLUTE ADDRESSES | SCM01500 0 <hex> b5bb <hex> a6 <hex> | |
| | ET=+ UT=+00.00.02 | DUMP_MEMORY_RAW DUMP_MEMORY Command Parameter(s) : MEMORYID_DUMPMEM SPM6N500 STARTADDR_DUMPMEM SPM7N500 NSAU_DUMPMEM SPM8N500 Subsch. ID : 370 Det. descr. : DUMP MEMORY USING ABSOLUTE ADDRESSES | SCM01500 0 <hex> b660 <hex> a6 <hex> | |

SpireEngSlowPMDump Dump and Check Memory (CRP)
 File: H_CRP_SPI_DUMP.xls
 Author: R. Biggins



| Step No. | Time | Activity/Remarks | TC/TLM | Display/ Branch |
|----------|----------------------|--|---|-----------------|
| | ET=+ UT=+00.00.02 | DUMP_MEMORY_RAW DUMP_MEMORY Command Parameter(s) : MEMORYID_DUMPMEM SPM6N500 STARTADDR_DUMPMEM SPM7N500 NSAU_DUMPMEM SPM8N500 Subsch. ID : 370 Det. descr. : DUMP MEMORY USING ABSOLUTE ADDRESSES | SCM01500 0 <hex> b705 <hex> a6 <hex> | |
| | ET=+ UT=+00.00.02 | DUMP_MEMORY_RAW DUMP_MEMORY Command Parameter(s) : MEMORYID_DUMPMEM SPM6N500 STARTADDR_DUMPMEM SPM7N500 NSAU_DUMPMEM SPM8N500 Subsch. ID : 370 Det. descr. : DUMP MEMORY USING ABSOLUTE ADDRESSES | SCM01500 0 <hex> b7aa <hex> a6 <hex> | |
| | ET=+ UT=+00.00.02 | DUMP_MEMORY_RAW DUMP_MEMORY Command Parameter(s) : MEMORYID_DUMPMEM SPM6N500 STARTADDR_DUMPMEM SPM7N500 NSAU_DUMPMEM SPM8N500 Subsch. ID : 370 Det. descr. : DUMP MEMORY USING ABSOLUTE ADDRESSES | SCM01500 0 <hex> b84f <hex> a6 <hex> | |
| | ET=+ UT=+00.00.02 | DUMP_MEMORY_RAW DUMP_MEMORY Command Parameter(s) : MEMORYID_DUMPMEM SPM6N500 STARTADDR_DUMPMEM SPM7N500 NSAU_DUMPMEM SPM8N500 Subsch. ID : 370 Det. descr. : DUMP MEMORY USING ABSOLUTE ADDRESSES | SCM01500 0 <hex> b8f4 <hex> a6 <hex> | |
| | ET=+ UT=+00.00.02 | DUMP_MEMORY_RAW DUMP_MEMORY Command Parameter(s) : MEMORYID_DUMPMEM SPM6N500 STARTADDR_DUMPMEM SPM7N500 NSAU_DUMPMEM SPM8N500 Subsch. ID : 370 Det. descr. : DUMP MEMORY USING ABSOLUTE ADDRESSES | SCM01500 0 <hex> b999 <hex> a6 <hex> | |

SpireEngSlowPMDump Dump and Check Memory (CRP)
 File: H_CRP_SPI_DUMP.xls
 Author: R. Biggins



| Step No. | Time | Activity/Remarks | TC/TLM | Display/ Branch |
|----------|----------------------|--|---|-----------------|
| | ET=+ UT=+00.00.02 | DUMP_MEMORY_RAW DUMP_MEMORY Command Parameter(s) : MEMORYID_DUMPMEM SPM6N500 STARTADDR_DUMPMEM SPM7N500 NSAU_DUMPMEM SPM8N500 Subsch. ID : 370 Det. descr. : DUMP MEMORY USING ABSOLUTE ADDRESSES | SCM01500 0 <hex> ba3e <hex> a6 <hex> | |
| | ET=+ UT=+00.00.02 | DUMP_MEMORY_RAW DUMP_MEMORY Command Parameter(s) : MEMORYID_DUMPMEM SPM6N500 STARTADDR_DUMPMEM SPM7N500 NSAU_DUMPMEM SPM8N500 Subsch. ID : 370 Det. descr. : DUMP MEMORY USING ABSOLUTE ADDRESSES | SCM01500 0 <hex> bae3 <hex> a6 <hex> | |
| | ET=+ UT=+00.00.02 | DUMP_MEMORY_RAW DUMP_MEMORY Command Parameter(s) : MEMORYID_DUMPMEM SPM6N500 STARTADDR_DUMPMEM SPM7N500 NSAU_DUMPMEM SPM8N500 Subsch. ID : 370 Det. descr. : DUMP MEMORY USING ABSOLUTE ADDRESSES | SCM01500 0 <hex> bb88 <hex> a6 <hex> | |
| | ET=+ UT=+00.00.02 | DUMP_MEMORY_RAW DUMP_MEMORY Command Parameter(s) : MEMORYID_DUMPMEM SPM6N500 STARTADDR_DUMPMEM SPM7N500 NSAU_DUMPMEM SPM8N500 Subsch. ID : 370 Det. descr. : DUMP MEMORY USING ABSOLUTE ADDRESSES | SCM01500 0 <hex> bc2d <hex> a6 <hex> | |
| | ET=+ UT=+00.00.02 | DUMP_MEMORY_RAW DUMP_MEMORY Command Parameter(s) : MEMORYID_DUMPMEM SPM6N500 STARTADDR_DUMPMEM SPM7N500 NSAU_DUMPMEM SPM8N500 Subsch. ID : 370 Det. descr. : DUMP MEMORY USING ABSOLUTE ADDRESSES | SCM01500 0 <hex> bcd2 <hex> a6 <hex> | |

SpireEngSlowPMDump Dump and Check Memory (CRP)
 File: H_CRP_SPI_DUMP.xls
 Author: R. Biggins



| Step No. | Time | Activity/Remarks | TC/TLM | Display/ Branch |
|----------|----------------------|--|---|-----------------|
| | ET=+ UT=+00.00.02 | DUMP_MEMORY_RAW DUMP_MEMORY Command Parameter(s) : MEMORYID_DUMPMEM SPM6N500 STARTADDR_DUMPMEM SPM7N500 NSAU_DUMPMEM SPM8N500 Subsch. ID : 370 Det. descr. : DUMP MEMORY USING ABSOLUTE ADDRESSES | SCM01500 0 <hex> bd77 <hex> a6 <hex> | |
| | ET=+ UT=+00.00.02 | DUMP_MEMORY_RAW DUMP_MEMORY Command Parameter(s) : MEMORYID_DUMPMEM SPM6N500 STARTADDR_DUMPMEM SPM7N500 NSAU_DUMPMEM SPM8N500 Subsch. ID : 370 Det. descr. : DUMP MEMORY USING ABSOLUTE ADDRESSES | SCM01500 0 <hex> be1c <hex> a6 <hex> | |
| | ET=+ UT=+00.00.02 | DUMP_MEMORY_RAW DUMP_MEMORY Command Parameter(s) : MEMORYID_DUMPMEM SPM6N500 STARTADDR_DUMPMEM SPM7N500 NSAU_DUMPMEM SPM8N500 Subsch. ID : 370 Det. descr. : DUMP MEMORY USING ABSOLUTE ADDRESSES | SCM01500 0 <hex> be1c <hex> a6 <hex> | |
| | ET=+ UT=+00.00.02 | DUMP_MEMORY_RAW DUMP_MEMORY Command Parameter(s) : MEMORYID_DUMPMEM SPM6N500 STARTADDR_DUMPMEM SPM7N500 NSAU_DUMPMEM SPM8N500 Subsch. ID : 370 Det. descr. : DUMP MEMORY USING ABSOLUTE ADDRESSES | SCM01500 0 <hex> bf66 <hex> a6 <hex> | |
| | ET=+ UT=+00.00.02 | DUMP_MEMORY_RAW DUMP_MEMORY Command Parameter(s) : MEMORYID_DUMPMEM SPM6N500 STARTADDR_DUMPMEM SPM7N500 NSAU_DUMPMEM SPM8N500 Subsch. ID : 370 Det. descr. : DUMP MEMORY USING ABSOLUTE ADDRESSES | SCM01500 0 <hex> c00b <hex> a6 <hex> | |

SpireEngSlowPMDump Dump and Check Memory (CRP)
 File: H_CRP_SPI_DUMP.xls
 Author: R. Biggins



| Step No. | Time | Activity/Remarks | TC/TLM | Display/ Branch |
|----------|----------------------|--|---|-----------------|
| | ET=+ UT=+00.00.02 | DUMP_MEMORY_RAW DUMP_MEMORY Command Parameter(s) : MEMORYID_DUMPMEM SPM6N500 STARTADDR_DUMPMEM SPM7N500 NSAU_DUMPMEM SPM8N500 Subsch. ID : 370 Det. descr. : DUMP MEMORY USING ABSOLUTE ADDRESSES | SCM01500 0 <hex> c0b0 <hex> a6 <hex> | |
| | ET=+ UT=+00.00.02 | DUMP_MEMORY_RAW DUMP_MEMORY Command Parameter(s) : MEMORYID_DUMPMEM SPM6N500 STARTADDR_DUMPMEM SPM7N500 NSAU_DUMPMEM SPM8N500 Subsch. ID : 370 Det. descr. : DUMP MEMORY USING ABSOLUTE ADDRESSES | SCM01500 0 <hex> c155 <hex> a6 <hex> | |
| | ET=+ UT=+00.00.02 | DUMP_MEMORY_RAW DUMP_MEMORY Command Parameter(s) : MEMORYID_DUMPMEM SPM6N500 STARTADDR_DUMPMEM SPM7N500 NSAU_DUMPMEM SPM8N500 Subsch. ID : 370 Det. descr. : DUMP MEMORY USING ABSOLUTE ADDRESSES | SCM01500 0 <hex> c1fa <hex> a6 <hex> | |
| | ET=+ UT=+00.00.02 | DUMP_MEMORY_RAW DUMP_MEMORY Command Parameter(s) : MEMORYID_DUMPMEM SPM6N500 STARTADDR_DUMPMEM SPM7N500 NSAU_DUMPMEM SPM8N500 Subsch. ID : 370 Det. descr. : DUMP MEMORY USING ABSOLUTE ADDRESSES | SCM01500 0 <hex> c29f <hex> a6 <hex> | |
| | ET=+ UT=+00.00.02 | DUMP_MEMORY_RAW DUMP_MEMORY Command Parameter(s) : MEMORYID_DUMPMEM SPM6N500 STARTADDR_DUMPMEM SPM7N500 NSAU_DUMPMEM SPM8N500 Subsch. ID : 370 Det. descr. : DUMP MEMORY USING ABSOLUTE ADDRESSES | SCM01500 0 <hex> c344 <hex> a6 <hex> | |

SpireEngSlowPMDump Dump and Check Memory (CRP)
 File: H_CRP_SPI_DUMP.xls
 Author: R. Biggins



| Step No. | Time | Activity/Remarks | TC/TLM | Display/ Branch |
|----------|----------------------|--|---|-----------------|
| | ET=+ UT=+00.00.02 | DUMP_MEMORY_RAW DUMP_MEMORY Command Parameter(s) : MEMORYID_DUMPMEM SPM6N500 STARTADDR_DUMPMEM SPM7N500 NSAU_DUMPMEM SPM8N500 Subsch. ID : 370 Det. descr. : DUMP MEMORY USING ABSOLUTE ADDRESSES | SCM01500 0 <hex> c3e9 <hex> a6 <hex> | |
| | ET=+ UT=+00.00.02 | DUMP_MEMORY_RAW DUMP_MEMORY Command Parameter(s) : MEMORYID_DUMPMEM SPM6N500 STARTADDR_DUMPMEM SPM7N500 NSAU_DUMPMEM SPM8N500 Subsch. ID : 370 Det. descr. : DUMP MEMORY USING ABSOLUTE ADDRESSES | SCM01500 0 <hex> c48e <hex> a6 <hex> | |
| | ET=+ UT=+00.00.02 | DUMP_MEMORY_RAW DUMP_MEMORY Command Parameter(s) : MEMORYID_DUMPMEM SPM6N500 STARTADDR_DUMPMEM SPM7N500 NSAU_DUMPMEM SPM8N500 Subsch. ID : 370 Det. descr. : DUMP MEMORY USING ABSOLUTE ADDRESSES | SCM01500 0 <hex> c533 <hex> a6 <hex> | |
| | ET=+ UT=+00.00.02 | DUMP_MEMORY_RAW DUMP_MEMORY Command Parameter(s) : MEMORYID_DUMPMEM SPM6N500 STARTADDR_DUMPMEM SPM7N500 NSAU_DUMPMEM SPM8N500 Subsch. ID : 370 Det. descr. : DUMP MEMORY USING ABSOLUTE ADDRESSES | SCM01500 0 <hex> c5d8 <hex> a6 <hex> | |
| | ET=+ UT=+00.00.02 | DUMP_MEMORY_RAW DUMP_MEMORY Command Parameter(s) : MEMORYID_DUMPMEM SPM6N500 STARTADDR_DUMPMEM SPM7N500 NSAU_DUMPMEM SPM8N500 Subsch. ID : 370 Det. descr. : DUMP MEMORY USING ABSOLUTE ADDRESSES | SCM01500 0 <hex> c67d <hex> a6 <hex> | |

SpireEngSlowPMDump Dump and Check Memory (CRP)
 File: H_CRP_SPI_DUMP.xls
 Author: R. Biggins



| Step No. | Time | Activity/Remarks | TC/TLM | Display/ Branch |
|----------|----------------------|--|---|-----------------|
| | ET=+ UT=+00.00.02 | DUMP_MEMORY_RAW DUMP_MEMORY Command Parameter(s) : MEMORYID_DUMPMEM SPM6N500 STARTADDR_DUMPMEM SPM7N500 NSAU_DUMPMEM SPM8N500 Subsch. ID : 370 Det. descr. : DUMP MEMORY USING ABSOLUTE ADDRESSES | SCM01500 0 <hex> c722 <hex> a6 <hex> | |
| | ET=+ UT=+00.00.02 | DUMP_MEMORY_RAW DUMP_MEMORY Command Parameter(s) : MEMORYID_DUMPMEM SPM6N500 STARTADDR_DUMPMEM SPM7N500 NSAU_DUMPMEM SPM8N500 Subsch. ID : 370 Det. descr. : DUMP MEMORY USING ABSOLUTE ADDRESSES | SCM01500 0 <hex> c7c7 <hex> a6 <hex> | |
| | ET=+ UT=+00.00.02 | DUMP_MEMORY_RAW DUMP_MEMORY Command Parameter(s) : MEMORYID_DUMPMEM SPM6N500 STARTADDR_DUMPMEM SPM7N500 NSAU_DUMPMEM SPM8N500 Subsch. ID : 370 Det. descr. : DUMP MEMORY USING ABSOLUTE ADDRESSES | SCM01500 0 <hex> c86c <hex> a6 <hex> | |
| | ET=+ UT=+00.00.02 | DUMP_MEMORY_RAW DUMP_MEMORY Command Parameter(s) : MEMORYID_DUMPMEM SPM6N500 STARTADDR_DUMPMEM SPM7N500 NSAU_DUMPMEM SPM8N500 Subsch. ID : 370 Det. descr. : DUMP MEMORY USING ABSOLUTE ADDRESSES | SCM01500 0 <hex> c911 <hex> a6 <hex> | |
| | ET=+ UT=+00.00.02 | DUMP_MEMORY_RAW DUMP_MEMORY Command Parameter(s) : MEMORYID_DUMPMEM SPM6N500 STARTADDR_DUMPMEM SPM7N500 NSAU_DUMPMEM SPM8N500 Subsch. ID : 370 Det. descr. : DUMP MEMORY USING ABSOLUTE ADDRESSES | SCM01500 0 <hex> c9b6 <hex> a6 <hex> | |

SpireEngSlowPMDump Dump and Check Memory (CRP)
 File: H_CRP_SPI_DUMP.xls
 Author: R. Biggins



| Step No. | Time | Activity/Remarks | TC/TLM | Display/ Branch |
|----------|----------------------|---|---|-----------------|
| | ET=+ UT=+00.00.02 | DUMP_MEMORY_RAW DUMP_MEMORY Command Parameter(s) : MEMORYID_DUMPMEM SPM6N500 STARTADDR_DUMPMEM SPM7N500 NSAU_DUMPMEM SPM8N500 Subsch. ID : 370 Det. descr. : DUMP MEMORY USING ABSOLUTE ADDRESSES | SCM01500 0 <hex> ca5b <hex> a6 <hex> | |
| | ET=+ UT=+00.00.02 | DUMP_MEMORY_RAW DUMP_MEMORY Command Parameter(s) : MEMORYID_DUMPMEM SPM6N500 STARTADDR_DUMPMEM SPM7N500 NSAU_DUMPMEM SPM8N500 Subsch. ID : 370 Det. descr. : DUMP MEMORY USING ABSOLUTE ADDRESSES | SCM01500 0 <hex> cb00 <hex> a6 <hex> | |
| | ET=+ UT=+00.00.02 | DUMP_MEMORY_RAW DUMP_MEMORY Command Parameter(s) : MEMORYID_DUMPMEM SPM6N500 STARTADDR_DUMPMEM SPM7N500 NSAU_DUMPMEM SPM8N500 Subsch. ID : 370 Det. descr. : DUMP MEMORY USING ABSOLUTE ADDRESSES | SCM01500 0 <hex> cba5 <hex> a6 <hex> | |
| | ET=+ UT=+00.00.02 | DUMP_MEMORY_RAW DUMP_MEMORY Command Parameter(s) : MEMORYID_DUMPMEM SPM6N500 STARTADDR_DUMPMEM SPM7N500 NSAU_DUMPMEM SPM8N500 Subsch. ID : 370 Det. descr. : DUMP MEMORY USING ABSOLUTE ADDRESSES | SCM01500 0 <hex> cc4a <hex> a6 <hex> | |
| | ET=+ UT=+00.00.02 | DUMP_MEMORY_RAW DUMP_MEMORY Command Parameter(s) : MEMORYID_DUMPMEM SPM6N500 STARTADDR_DUMPMEM SPM7N500 NSAU_DUMPMEM SPM8N500 Subsch. ID : 370 Det. descr. : DUMP MEMORY USING ABSOLUTE ADDRESSES | SCM01500 0 <hex> ccef <hex> a6 <hex> | |

SpireEngSlowPMDump Dump and Check Memory (CRP)
 File: H_CRP_SPI_DUMP.xls
 Author: R. Biggins



| Step No. | Time | Activity/Remarks | TC/TLM | Display/ Branch |
|----------|----------------------|--|---|-----------------|
| | ET=+ UT=+00.00.02 | DUMP_MEMORY_RAW DUMP_MEMORY Command Parameter(s) : MEMORYID_DUMPMEM SPM6N500 STARTADDR_DUMPMEM SPM7N500 NSAU_DUMPMEM SPM8N500 Subsch. ID : 370 Det. descr. : DUMP MEMORY USING ABSOLUTE ADDRESSES | SCM01500 0 <hex> cd94 <hex> a6 <hex> | |
| | ET=+ UT=+00.00.02 | DUMP_MEMORY_RAW DUMP_MEMORY Command Parameter(s) : MEMORYID_DUMPMEM SPM6N500 STARTADDR_DUMPMEM SPM7N500 NSAU_DUMPMEM SPM8N500 Subsch. ID : 370 Det. descr. : DUMP MEMORY USING ABSOLUTE ADDRESSES | SCM01500 0 <hex> ce39 <hex> a6 <hex> | |
| | ET=+ UT=+00.00.02 | DUMP_MEMORY_RAW DUMP_MEMORY Command Parameter(s) : MEMORYID_DUMPMEM SPM6N500 STARTADDR_DUMPMEM SPM7N500 NSAU_DUMPMEM SPM8N500 Subsch. ID : 370 Det. descr. : DUMP MEMORY USING ABSOLUTE ADDRESSES | SCM01500 0 <hex> cede <hex> a6 <hex> | |
| | ET=+ UT=+00.00.02 | DUMP_MEMORY_RAW DUMP_MEMORY Command Parameter(s) : MEMORYID_DUMPMEM SPM6N500 STARTADDR_DUMPMEM SPM7N500 NSAU_DUMPMEM SPM8N500 Subsch. ID : 370 Det. descr. : DUMP MEMORY USING ABSOLUTE ADDRESSES | SCM01500 0 <hex> cf83 <hex> a6 <hex> | |
| | ET=+ UT=+00.00.02 | DUMP_MEMORY_RAW DUMP_MEMORY Command Parameter(s) : MEMORYID_DUMPMEM SPM6N500 STARTADDR_DUMPMEM SPM7N500 NSAU_DUMPMEM SPM8N500 Subsch. ID : 370 Det. descr. : DUMP MEMORY USING ABSOLUTE ADDRESSES | SCM01500 0 <hex> d028 <hex> a6 <hex> | |

SpireEngSlowPMDump Dump and Check Memory (CRP)
 File: H_CRP_SPI_DUMP.xls
 Author: R. Biggins



| Step No. | Time | Activity/Remarks | TC/TLM | Display/ Branch |
|----------|----------------------|---|---|-----------------|
| | ET=+ UT=+00.00.02 | DUMP_MEMORY_RAW DUMP_MEMORY Command Parameter(s) : MEMORYID_DUMPMEM SPM6N500 STARTADDR_DUMPMEM SPM7N500 NSAU_DUMPMEM SPM8N500 Subsch. ID : 370 Det. descr. : DUMP MEMORY USING ABSOLUTE ADDRESSES | SCM01500 0 <hex> d0cd <hex> a6 <hex> | |
| | ET=+ UT=+00.00.02 | DUMP_MEMORY_RAW DUMP_MEMORY Command Parameter(s) : MEMORYID_DUMPMEM SPM6N500 STARTADDR_DUMPMEM SPM7N500 NSAU_DUMPMEM SPM8N500 Subsch. ID : 370 Det. descr. : DUMP MEMORY USING ABSOLUTE ADDRESSES | SCM01500 0 <hex> d172 <hex> a6 <hex> | |
| | ET=+ UT=+00.00.02 | DUMP_MEMORY_RAW DUMP_MEMORY Command Parameter(s) : MEMORYID_DUMPMEM SPM6N500 STARTADDR_DUMPMEM SPM7N500 NSAU_DUMPMEM SPM8N500 Subsch. ID : 370 Det. descr. : DUMP MEMORY USING ABSOLUTE ADDRESSES | SCM01500 0 <hex> d217 <hex> a6 <hex> | |
| | ET=+ UT=+00.00.02 | DUMP_MEMORY_RAW DUMP_MEMORY Command Parameter(s) : MEMORYID_DUMPMEM SPM6N500 STARTADDR_DUMPMEM SPM7N500 NSAU_DUMPMEM SPM8N500 Subsch. ID : 370 Det. descr. : DUMP MEMORY USING ABSOLUTE ADDRESSES | SCM01500 0 <hex> d2bc <hex> a6 <hex> | |
| | ET=+ UT=+00.00.02 | DUMP_MEMORY_RAW DUMP_MEMORY Command Parameter(s) : MEMORYID_DUMPMEM SPM6N500 STARTADDR_DUMPMEM SPM7N500 NSAU_DUMPMEM SPM8N500 Subsch. ID : 370 Det. descr. : DUMP MEMORY USING ABSOLUTE ADDRESSES | SCM01500 0 <hex> d361 <hex> a6 <hex> | |

SpireEngSlowPMDump Dump and Check Memory (CRP)
 File: H_CRP_SPI_DUMP.xls
 Author: R. Biggins



| Step No. | Time | Activity/Remarks | TC/TLM | Display/ Branch |
|----------|----------------------|--|---|-----------------|
| | ET=+ UT=+00.00.02 | DUMP_MEMORY_RAW DUMP_MEMORY Command Parameter(s) : MEMORYID_DUMPMEM SPM6N500 STARTADDR_DUMPMEM SPM7N500 NSAU_DUMPMEM SPM8N500 Subsch. ID : 370 Det. descr. : DUMP MEMORY USING ABSOLUTE ADDRESSES | SCM01500 0 <hex> d406 <hex> a6 <hex> | |
| | ET=+ UT=+00.00.02 | DUMP_MEMORY_RAW DUMP_MEMORY Command Parameter(s) : MEMORYID_DUMPMEM SPM6N500 STARTADDR_DUMPMEM SPM7N500 NSAU_DUMPMEM SPM8N500 Subsch. ID : 370 Det. descr. : DUMP MEMORY USING ABSOLUTE ADDRESSES | SCM01500 0 <hex> d4ab <hex> a6 <hex> | |
| | ET=+ UT=+00.00.02 | DUMP_MEMORY_RAW DUMP_MEMORY Command Parameter(s) : MEMORYID_DUMPMEM SPM6N500 STARTADDR_DUMPMEM SPM7N500 NSAU_DUMPMEM SPM8N500 Subsch. ID : 370 Det. descr. : DUMP MEMORY USING ABSOLUTE ADDRESSES | SCM01500 0 <hex> d550 <hex> a6 <hex> | |
| | ET=+ UT=+00.00.02 | DUMP_MEMORY_RAW DUMP_MEMORY Command Parameter(s) : MEMORYID_DUMPMEM SPM6N500 STARTADDR_DUMPMEM SPM7N500 NSAU_DUMPMEM SPM8N500 Subsch. ID : 370 Det. descr. : DUMP MEMORY USING ABSOLUTE ADDRESSES | SCM01500 0 <hex> d5f5 <hex> a6 <hex> | |
| | ET=+ UT=+00.00.02 | DUMP_MEMORY_RAW DUMP_MEMORY Command Parameter(s) : MEMORYID_DUMPMEM SPM6N500 STARTADDR_DUMPMEM SPM7N500 NSAU_DUMPMEM SPM8N500 Subsch. ID : 370 Det. descr. : DUMP MEMORY USING ABSOLUTE ADDRESSES | SCM01500 0 <hex> d69a <hex> a6 <hex> | |

SpireEngSlowPMDump Dump and Check Memory (CRP)
 File: H_CRP_SPI_DUMP.xls
 Author: R. Biggins



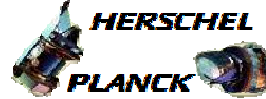
| Step No. | Time | Activity/Remarks | TC/TLM | Display/ Branch |
|----------|----------------------|--|---|-----------------|
| | ET=+ UT=+00.00.02 | DUMP_MEMORY_RAW DUMP_MEMORY Command Parameter(s) : MEMORYID_DUMPMEM SPM6N500 STARTADDR_DUMPMEM SPM7N500 NSAU_DUMPMEM SPM8N500 Subsch. ID : 370 Det. descr. : DUMP MEMORY USING ABSOLUTE ADDRESSES | SCM01500 0 <hex> d73f <hex> a6 <hex> | |
| | ET=+ UT=+00.00.02 | DUMP_MEMORY_RAW DUMP_MEMORY Command Parameter(s) : MEMORYID_DUMPMEM SPM6N500 STARTADDR_DUMPMEM SPM7N500 NSAU_DUMPMEM SPM8N500 Subsch. ID : 370 Det. descr. : DUMP MEMORY USING ABSOLUTE ADDRESSES | SCM01500 0 <hex> d7e4 <hex> a6 <hex> | |
| | ET=+ UT=+00.00.02 | DUMP_MEMORY_RAW DUMP_MEMORY Command Parameter(s) : MEMORYID_DUMPMEM SPM6N500 STARTADDR_DUMPMEM SPM7N500 NSAU_DUMPMEM SPM8N500 Subsch. ID : 370 Det. descr. : DUMP MEMORY USING ABSOLUTE ADDRESSES | SCM01500 0 <hex> d889 <hex> a6 <hex> | |
| | ET=+ UT=+00.00.02 | DUMP_MEMORY_RAW DUMP_MEMORY Command Parameter(s) : MEMORYID_DUMPMEM SPM6N500 STARTADDR_DUMPMEM SPM7N500 NSAU_DUMPMEM SPM8N500 Subsch. ID : 370 Det. descr. : DUMP MEMORY USING ABSOLUTE ADDRESSES | SCM01500 0 <hex> d92e <hex> a6 <hex> | |
| | ET=+ UT=+00.00.02 | DUMP_MEMORY_RAW DUMP_MEMORY Command Parameter(s) : MEMORYID_DUMPMEM SPM6N500 STARTADDR_DUMPMEM SPM7N500 NSAU_DUMPMEM SPM8N500 Subsch. ID : 370 Det. descr. : DUMP MEMORY USING ABSOLUTE ADDRESSES | SCM01500 0 <hex> d9d3 <hex> a6 <hex> | |

SpireEngSlowPMDump Dump and Check Memory (CRP)
 File: H_CRP_SPI_DUMP.xls
 Author: R. Biggins



| Step No. | Time | Activity/Remarks | TC/TLM | Display/ Branch |
|----------|----------------------|--|---|-----------------|
| | ET=+ UT=+00.00.02 | DUMP_MEMORY_RAW DUMP_MEMORY Command Parameter(s) : MEMORYID_DUMPMEM SPM6N500 STARTADDR_DUMPMEM SPM7N500 NSAU_DUMPMEM SPM8N500 Subsch. ID : 370 Det. descr. : DUMP MEMORY USING ABSOLUTE ADDRESSES | SCM01500 0 <hex> da78 <hex> a6 <hex> | |
| | ET=+ UT=+00.00.02 | DUMP_MEMORY_RAW DUMP_MEMORY Command Parameter(s) : MEMORYID_DUMPMEM SPM6N500 STARTADDR_DUMPMEM SPM7N500 NSAU_DUMPMEM SPM8N500 Subsch. ID : 370 Det. descr. : DUMP MEMORY USING ABSOLUTE ADDRESSES | SCM01500 0 <hex> db1d <hex> a6 <hex> | |
| | ET=+ UT=+00.00.02 | DUMP_MEMORY_RAW DUMP_MEMORY Command Parameter(s) : MEMORYID_DUMPMEM SPM6N500 STARTADDR_DUMPMEM SPM7N500 NSAU_DUMPMEM SPM8N500 Subsch. ID : 370 Det. descr. : DUMP MEMORY USING ABSOLUTE ADDRESSES | SCM01500 0 <hex> dbc2 <hex> a6 <hex> | |
| | ET=+ UT=+00.00.02 | DUMP_MEMORY_RAW DUMP_MEMORY Command Parameter(s) : MEMORYID_DUMPMEM SPM6N500 STARTADDR_DUMPMEM SPM7N500 NSAU_DUMPMEM SPM8N500 Subsch. ID : 370 Det. descr. : DUMP MEMORY USING ABSOLUTE ADDRESSES | SCM01500 0 <hex> dc67 <hex> a6 <hex> | |
| | ET=+ UT=+00.00.02 | DUMP_MEMORY_RAW DUMP_MEMORY Command Parameter(s) : MEMORYID_DUMPMEM SPM6N500 STARTADDR_DUMPMEM SPM7N500 NSAU_DUMPMEM SPM8N500 Subsch. ID : 370 Det. descr. : DUMP MEMORY USING ABSOLUTE ADDRESSES | SCM01500 0 <hex> dd0c <hex> a6 <hex> | |

SpireEngSlowPMDump Dump and Check Memory (CRP)
 File: H_CRP_SPI_DUMP.xls
 Author: R. Biggins



| Step No. | Time | Activity/Remarks | TC/TLM | Display/ Branch |
|----------|----------------------|--|---|-----------------|
| | ET=+ UT=+00.00.02 | DUMP_MEMORY_RAW DUMP_MEMORY Command Parameter(s) : MEMORYID_DUMPMEM SPM6N500 STARTADDR_DUMPMEM SPM7N500 NSAU_DUMPMEM SPM8N500 Subsch. ID : 370 Det. descr. : DUMP MEMORY USING ABSOLUTE ADDRESSES | SCM01500 0 <hex> ddb1 <hex> a6 <hex> | |
| | ET=+ UT=+00.00.02 | DUMP_MEMORY_RAW DUMP_MEMORY Command Parameter(s) : MEMORYID_DUMPMEM SPM6N500 STARTADDR_DUMPMEM SPM7N500 NSAU_DUMPMEM SPM8N500 Subsch. ID : 370 Det. descr. : DUMP MEMORY USING ABSOLUTE ADDRESSES | SCM01500 0 <hex> de56 <hex> a6 <hex> | |
| | ET=+ UT=+00.00.02 | DUMP_MEMORY_RAW DUMP_MEMORY Command Parameter(s) : MEMORYID_DUMPMEM SPM6N500 STARTADDR_DUMPMEM SPM7N500 NSAU_DUMPMEM SPM8N500 Subsch. ID : 370 Det. descr. : DUMP MEMORY USING ABSOLUTE ADDRESSES | SCM01500 0 <hex> defb <hex> a6 <hex> | |
| | ET=+ UT=+00.00.02 | DUMP_MEMORY_RAW DUMP_MEMORY Command Parameter(s) : MEMORYID_DUMPMEM SPM6N500 STARTADDR_DUMPMEM SPM7N500 NSAU_DUMPMEM SPM8N500 Subsch. ID : 370 Det. descr. : DUMP MEMORY USING ABSOLUTE ADDRESSES | SCM01500 0 <hex> dfa0 <hex> a6 <hex> | |
| | ET=+ UT=+00.00.02 | DUMP_MEMORY_RAW DUMP_MEMORY Command Parameter(s) : MEMORYID_DUMPMEM SPM6N500 STARTADDR_DUMPMEM SPM7N500 NSAU_DUMPMEM SPM8N500 Subsch. ID : 370 Det. descr. : DUMP MEMORY USING ABSOLUTE ADDRESSES | SCM01500 0 <hex> e045 <hex> a6 <hex> | |

SpireEngSlowPMDump Dump and Check Memory (CRP)
 File: H_CRP_SPI_DUMP.xls
 Author: R. Biggins



| Step No. | Time | Activity/Remarks | TC/TLM | Display/ Branch |
|----------|----------------------|--|---|-----------------|
| | ET=+ UT=+00.00.02 | DUMP_MEMORY_RAW DUMP_MEMORY Command Parameter(s) : MEMORYID_DUMPMEM SPM6N500 STARTADDR_DUMPMEM SPM7N500 NSAU_DUMPMEM SPM8N500 Subsch. ID : 370 Det. descr. : DUMP MEMORY USING ABSOLUTE ADDRESSES | SCM01500 0 <hex> e0ea <hex> a6 <hex> | |
| | ET=+ UT=+00.00.02 | DUMP_MEMORY_RAW DUMP_MEMORY Command Parameter(s) : MEMORYID_DUMPMEM SPM6N500 STARTADDR_DUMPMEM SPM7N500 NSAU_DUMPMEM SPM8N500 Subsch. ID : 370 Det. descr. : DUMP MEMORY USING ABSOLUTE ADDRESSES | SCM01500 0 <hex> e18f <hex> a6 <hex> | |
| | ET=+ UT=+00.00.02 | DUMP_MEMORY_RAW DUMP_MEMORY Command Parameter(s) : MEMORYID_DUMPMEM SPM6N500 STARTADDR_DUMPMEM SPM7N500 NSAU_DUMPMEM SPM8N500 Subsch. ID : 370 Det. descr. : DUMP MEMORY USING ABSOLUTE ADDRESSES | SCM01500 0 <hex> e234 <hex> a6 <hex> | |
| | ET=+ UT=+00.00.02 | DUMP_MEMORY_RAW DUMP_MEMORY Command Parameter(s) : MEMORYID_DUMPMEM SPM6N500 STARTADDR_DUMPMEM SPM7N500 NSAU_DUMPMEM SPM8N500 Subsch. ID : 370 Det. descr. : DUMP MEMORY USING ABSOLUTE ADDRESSES | SCM01500 0 <hex> e2d9 <hex> a6 <hex> | |
| | ET=+ UT=+00.00.02 | DUMP_MEMORY_RAW DUMP_MEMORY Command Parameter(s) : MEMORYID_DUMPMEM SPM6N500 STARTADDR_DUMPMEM SPM7N500 NSAU_DUMPMEM SPM8N500 Subsch. ID : 370 Det. descr. : DUMP MEMORY USING ABSOLUTE ADDRESSES | SCM01500 0 <hex> e37e <hex> a6 <hex> | |

SpireEngSlowPMDump Dump and Check Memory (CRP)
 File: H_CRP_SPI_DUMP.xls
 Author: R. Biggins



| Step No. | Time | Activity/Remarks | TC/TLM | Display/ Branch |
|----------|----------------------|--|---|-----------------|
| | ET=+ UT=+00.00.02 | DUMP_MEMORY_RAW DUMP_MEMORY Command Parameter(s) : MEMORYID_DUMPMEM SPM6N500 STARTADDR_DUMPMEM SPM7N500 NSAU_DUMPMEM SPM8N500 Subsch. ID : 370 Det. descr. : DUMP MEMORY USING ABSOLUTE ADDRESSES | SCM01500 0 <hex> e423 <hex> a6 <hex> | |
| | ET=+ UT=+00.00.02 | DUMP_MEMORY_RAW DUMP_MEMORY Command Parameter(s) : MEMORYID_DUMPMEM SPM6N500 STARTADDR_DUMPMEM SPM7N500 NSAU_DUMPMEM SPM8N500 Subsch. ID : 370 Det. descr. : DUMP MEMORY USING ABSOLUTE ADDRESSES | SCM01500 0 <hex> e4c8 <hex> a6 <hex> | |
| | ET=+ UT=+00.00.02 | DUMP_MEMORY_RAW DUMP_MEMORY Command Parameter(s) : MEMORYID_DUMPMEM SPM6N500 STARTADDR_DUMPMEM SPM7N500 NSAU_DUMPMEM SPM8N500 Subsch. ID : 370 Det. descr. : DUMP MEMORY USING ABSOLUTE ADDRESSES | SCM01500 0 <hex> e56d <hex> a6 <hex> | |
| | ET=+ UT=+00.00.02 | DUMP_MEMORY_RAW DUMP_MEMORY Command Parameter(s) : MEMORYID_DUMPMEM SPM6N500 STARTADDR_DUMPMEM SPM7N500 NSAU_DUMPMEM SPM8N500 Subsch. ID : 370 Det. descr. : DUMP MEMORY USING ABSOLUTE ADDRESSES | SCM01500 0 <hex> e612 <hex> a6 <hex> | |
| | ET=+ UT=+00.00.02 | DUMP_MEMORY_RAW DUMP_MEMORY Command Parameter(s) : MEMORYID_DUMPMEM SPM6N500 STARTADDR_DUMPMEM SPM7N500 NSAU_DUMPMEM SPM8N500 Subsch. ID : 370 Det. descr. : DUMP MEMORY USING ABSOLUTE ADDRESSES | SCM01500 0 <hex> e6b7 <hex> a6 <hex> | |

SpireEngSlowPMDump Dump and Check Memory (CRP)
 File: H_CRP_SPI_DUMP.xls
 Author: R. Biggins



| Step No. | Time | Activity/Remarks | TC/TLM | Display/ Branch |
|----------|----------------------|--|---|-----------------|
| | ET=+ UT=+00.00.02 | DUMP_MEMORY_RAW DUMP_MEMORY Command Parameter(s) : MEMORYID_DUMPMEM SPM6N500 STARTADDR_DUMPMEM SPM7N500 NSAU_DUMPMEM SPM8N500 Subsch. ID : 370 Det. descr. : DUMP MEMORY USING ABSOLUTE ADDRESSES | SCM01500 0 <hex> e75c <hex> a6 <hex> | |
| | ET=+ UT=+00.00.02 | DUMP_MEMORY_RAW DUMP_MEMORY Command Parameter(s) : MEMORYID_DUMPMEM SPM6N500 STARTADDR_DUMPMEM SPM7N500 NSAU_DUMPMEM SPM8N500 Subsch. ID : 370 Det. descr. : DUMP MEMORY USING ABSOLUTE ADDRESSES | SCM01500 0 <hex> e801 <hex> a6 <hex> | |
| | ET=+ UT=+00.00.02 | DUMP_MEMORY_RAW DUMP_MEMORY Command Parameter(s) : MEMORYID_DUMPMEM SPM6N500 STARTADDR_DUMPMEM SPM7N500 NSAU_DUMPMEM SPM8N500 Subsch. ID : 370 Det. descr. : DUMP MEMORY USING ABSOLUTE ADDRESSES | SCM01500 0 <hex> e8a6 <hex> a6 <hex> | |
| | ET=+ UT=+00.00.02 | DUMP_MEMORY_RAW DUMP_MEMORY Command Parameter(s) : MEMORYID_DUMPMEM SPM6N500 STARTADDR_DUMPMEM SPM7N500 NSAU_DUMPMEM SPM8N500 Subsch. ID : 370 Det. descr. : DUMP MEMORY USING ABSOLUTE ADDRESSES | SCM01500 0 <hex> e94b <hex> a6 <hex> | |
| | ET=+ UT=+00.00.02 | DUMP_MEMORY_RAW DUMP_MEMORY Command Parameter(s) : MEMORYID_DUMPMEM SPM6N500 STARTADDR_DUMPMEM SPM7N500 NSAU_DUMPMEM SPM8N500 Subsch. ID : 370 Det. descr. : DUMP MEMORY USING ABSOLUTE ADDRESSES | SCM01500 0 <hex> e9f0 <hex> a6 <hex> | |

SpireEngSlowPMDump Dump and Check Memory (CRP)
 File: H_CRP_SPI_DUMP.xls
 Author: R. Biggins



| Step No. | Time | Activity/Remarks | TC/TLM | Display/ Branch |
|----------|----------------------|--|---|-----------------|
| | ET=+ UT=+00.00.02 | DUMP_MEMORY_RAW DUMP_MEMORY Command Parameter(s) : MEMORYID_DUMPMEM SPM6N500 STARTADDR_DUMPMEM SPM7N500 NSAU_DUMPMEM SPM8N500 Subsch. ID : 370 Det. descr. : DUMP MEMORY USING ABSOLUTE ADDRESSES | SCM01500 0 <hex> ea95 <hex> a6 <hex> | |
| | ET=+ UT=+00.00.02 | DUMP_MEMORY_RAW DUMP_MEMORY Command Parameter(s) : MEMORYID_DUMPMEM SPM6N500 STARTADDR_DUMPMEM SPM7N500 NSAU_DUMPMEM SPM8N500 Subsch. ID : 370 Det. descr. : DUMP MEMORY USING ABSOLUTE ADDRESSES | SCM01500 0 <hex> eb3a <hex> a6 <hex> | |
| | ET=+ UT=+00.00.02 | DUMP_MEMORY_RAW DUMP_MEMORY Command Parameter(s) : MEMORYID_DUMPMEM SPM6N500 STARTADDR_DUMPMEM SPM7N500 NSAU_DUMPMEM SPM8N500 Subsch. ID : 370 Det. descr. : DUMP MEMORY USING ABSOLUTE ADDRESSES | SCM01500 0 <hex> ebdf <hex> a6 <hex> | |
| | ET=+ UT=+00.00.02 | DUMP_MEMORY_RAW DUMP_MEMORY Command Parameter(s) : MEMORYID_DUMPMEM SPM6N500 STARTADDR_DUMPMEM SPM7N500 NSAU_DUMPMEM SPM8N500 Subsch. ID : 370 Det. descr. : DUMP MEMORY USING ABSOLUTE ADDRESSES | SCM01500 0 <hex> ec84 <hex> a6 <hex> | |
| | ET=+ UT=+00.00.02 | DUMP_MEMORY_RAW DUMP_MEMORY Command Parameter(s) : MEMORYID_DUMPMEM SPM6N500 STARTADDR_DUMPMEM SPM7N500 NSAU_DUMPMEM SPM8N500 Subsch. ID : 370 Det. descr. : DUMP MEMORY USING ABSOLUTE ADDRESSES | SCM01500 0 <hex> ed29 <hex> a6 <hex> | |

SpireEngSlowPMDump Dump and Check Memory (CRP)
 File: H_CRP_SPI_DUMP.xls
 Author: R. Biggins



| Step No. | Time | Activity/Remarks | TC/TLM | Display/ Branch |
|----------|----------------------|---|---|-----------------|
| | ET=+ UT=+00.00.02 | DUMP_MEMORY_RAW DUMP_MEMORY Command Parameter(s) : MEMORYID_DUMPMEM SPM6N500 STARTADDR_DUMPMEM SPM7N500 NSAU_DUMPMEM SPM8N500 Subsch. ID : 370 Det. descr. : DUMP MEMORY USING ABSOLUTE ADDRESSES | SCM01500 0 <hex> edce <hex> a6 <hex> | |
| | ET=+ UT=+00.00.02 | DUMP_MEMORY_RAW DUMP_MEMORY Command Parameter(s) : MEMORYID_DUMPMEM SPM6N500 STARTADDR_DUMPMEM SPM7N500 NSAU_DUMPMEM SPM8N500 Subsch. ID : 370 Det. descr. : DUMP MEMORY USING ABSOLUTE ADDRESSES | SCM01500 0 <hex> ee73 <hex> a6 <hex> | |
| | ET=+ UT=+00.00.02 | DUMP_MEMORY_RAW DUMP_MEMORY Command Parameter(s) : MEMORYID_DUMPMEM SPM6N500 STARTADDR_DUMPMEM SPM7N500 NSAU_DUMPMEM SPM8N500 Subsch. ID : 370 Det. descr. : DUMP MEMORY USING ABSOLUTE ADDRESSES | SCM01500 0 <hex> ef18 <hex> a6 <hex> | |
| | ET=+ UT=+00.00.02 | DUMP_MEMORY_RAW DUMP_MEMORY Command Parameter(s) : MEMORYID_DUMPMEM SPM6N500 STARTADDR_DUMPMEM SPM7N500 NSAU_DUMPMEM SPM8N500 Subsch. ID : 370 Det. descr. : DUMP MEMORY USING ABSOLUTE ADDRESSES | SCM01500 0 <hex> efbd <hex> a6 <hex> | |
| | ET=+ UT=+00.00.02 | DUMP_MEMORY_RAW DUMP_MEMORY Command Parameter(s) : MEMORYID_DUMPMEM SPM6N500 STARTADDR_DUMPMEM SPM7N500 NSAU_DUMPMEM SPM8N500 Subsch. ID : 370 Det. descr. : DUMP MEMORY USING ABSOLUTE ADDRESSES | SCM01500 0 <hex> f062 <hex> a6 <hex> | |

SpireEngSlowPMDump Dump and Check Memory (CRP)
 File: H_CRP_SPI_DUMP.xls
 Author: R. Biggins



| Step No. | Time | Activity/Remarks | TC/TLM | Display/ Branch |
|----------|----------------------|--|---|-----------------|
| | ET=+ UT=+00.00.02 | DUMP_MEMORY_RAW DUMP_MEMORY Command Parameter(s) : MEMORYID_DUMPMEM SPM6N500 STARTADDR_DUMPMEM SPM7N500 NSAU_DUMPMEM SPM8N500 Subsch. ID : 370 Det. descr. : DUMP MEMORY USING ABSOLUTE ADDRESSES | SCM01500 0 <hex> f107 <hex> a6 <hex> | |
| | ET=+ UT=+00.00.02 | DUMP_MEMORY_RAW DUMP_MEMORY Command Parameter(s) : MEMORYID_DUMPMEM SPM6N500 STARTADDR_DUMPMEM SPM7N500 NSAU_DUMPMEM SPM8N500 Subsch. ID : 370 Det. descr. : DUMP MEMORY USING ABSOLUTE ADDRESSES | SCM01500 0 <hex> f1ac <hex> a6 <hex> | |
| | ET=+ UT=+00.00.02 | DUMP_MEMORY_RAW DUMP_MEMORY Command Parameter(s) : MEMORYID_DUMPMEM SPM6N500 STARTADDR_DUMPMEM SPM7N500 NSAU_DUMPMEM SPM8N500 Subsch. ID : 370 Det. descr. : DUMP MEMORY USING ABSOLUTE ADDRESSES | SCM01500 0 <hex> f251 <hex> a6 <hex> | |
| | ET=+ UT=+00.00.02 | DUMP_MEMORY_RAW DUMP_MEMORY Command Parameter(s) : MEMORYID_DUMPMEM SPM6N500 STARTADDR_DUMPMEM SPM7N500 NSAU_DUMPMEM SPM8N500 Subsch. ID : 370 Det. descr. : DUMP MEMORY USING ABSOLUTE ADDRESSES | SCM01500 0 <hex> f2f6 <hex> a6 <hex> | |
| | ET=+ UT=+00.00.02 | DUMP_MEMORY_RAW DUMP_MEMORY Command Parameter(s) : MEMORYID_DUMPMEM SPM6N500 STARTADDR_DUMPMEM SPM7N500 NSAU_DUMPMEM SPM8N500 Subsch. ID : 370 Det. descr. : DUMP MEMORY USING ABSOLUTE ADDRESSES | SCM01500 0 <hex> f39b <hex> a6 <hex> | |

SpireEngSlowPMDump Dump and Check Memory (CRP)
 File: H_CRP_SPI_DUMP.xls
 Author: R. Biggins



| Step No. | Time | Activity/Remarks | TC/TLM | Display/ Branch |
|----------|----------------------|--|---|-----------------|
| | ET=+ UT=+00.00.02 | DUMP_MEMORY_RAW DUMP_MEMORY Command Parameter(s) : MEMORYID_DUMPMEM SPM6N500 STARTADDR_DUMPMEM SPM7N500 NSAU_DUMPMEM SPM8N500 Subsch. ID : 370 Det. descr. : DUMP MEMORY USING ABSOLUTE ADDRESSES | SCM01500 0 <hex> f440 <hex> a6 <hex> | |
| | ET=+ UT=+00.00.02 | DUMP_MEMORY_RAW DUMP_MEMORY Command Parameter(s) : MEMORYID_DUMPMEM SPM6N500 STARTADDR_DUMPMEM SPM7N500 NSAU_DUMPMEM SPM8N500 Subsch. ID : 370 Det. descr. : DUMP MEMORY USING ABSOLUTE ADDRESSES | SCM01500 0 <hex> f4e5 <hex> a6 <hex> | |
| | ET=+ UT=+00.00.02 | DUMP_MEMORY_RAW DUMP_MEMORY Command Parameter(s) : MEMORYID_DUMPMEM SPM6N500 STARTADDR_DUMPMEM SPM7N500 NSAU_DUMPMEM SPM8N500 Subsch. ID : 370 Det. descr. : DUMP MEMORY USING ABSOLUTE ADDRESSES | SCM01500 0 <hex> f58a <hex> a6 <hex> | |
| | ET=+ UT=+00.00.02 | DUMP_MEMORY_RAW DUMP_MEMORY Command Parameter(s) : MEMORYID_DUMPMEM SPM6N500 STARTADDR_DUMPMEM SPM7N500 NSAU_DUMPMEM SPM8N500 Subsch. ID : 370 Det. descr. : DUMP MEMORY USING ABSOLUTE ADDRESSES | SCM01500 0 <hex> f62f <hex> a6 <hex> | |
| | ET=+ UT=+00.00.02 | DUMP_MEMORY_RAW DUMP_MEMORY Command Parameter(s) : MEMORYID_DUMPMEM SPM6N500 STARTADDR_DUMPMEM SPM7N500 NSAU_DUMPMEM SPM8N500 Subsch. ID : 370 Det. descr. : DUMP MEMORY USING ABSOLUTE ADDRESSES | SCM01500 0 <hex> f6d4 <hex> a6 <hex> | |

SpireEngSlowPMDump Dump and Check Memory (CRP)
 File: H_CRP_SPI_DUMP.xls
 Author: R. Biggins



| Step No. | Time | Activity/Remarks | TC/TLM | Display/ Branch |
|----------|----------------------|--|---|-----------------|
| | ET=+ UT=+00.00.02 | DUMP_MEMORY_RAW DUMP_MEMORY Command Parameter(s) : MEMORYID_DUMPMEM SPM6N500 STARTADDR_DUMPMEM SPM7N500 NSAU_DUMPMEM SPM8N500 Subsch. ID : 370 Det. descr. : DUMP MEMORY USING ABSOLUTE ADDRESSES | SCM01500 0 <hex> f779 <hex> a6 <hex> | |
| | ET=+ UT=+00.00.02 | DUMP_MEMORY_RAW DUMP_MEMORY Command Parameter(s) : MEMORYID_DUMPMEM SPM6N500 STARTADDR_DUMPMEM SPM7N500 NSAU_DUMPMEM SPM8N500 Subsch. ID : 370 Det. descr. : DUMP MEMORY USING ABSOLUTE ADDRESSES | SCM01500 0 <hex> f81e <hex> a6 <hex> | |
| | ET=+ UT=+00.00.02 | DUMP_MEMORY_RAW DUMP_MEMORY Command Parameter(s) : MEMORYID_DUMPMEM SPM6N500 STARTADDR_DUMPMEM SPM7N500 NSAU_DUMPMEM SPM8N500 Subsch. ID : 370 Det. descr. : DUMP MEMORY USING ABSOLUTE ADDRESSES | SCM01500 0 <hex> f8c3 <hex> a6 <hex> | |
| | ET=+ UT=+00.00.02 | DUMP_MEMORY_RAW DUMP_MEMORY Command Parameter(s) : MEMORYID_DUMPMEM SPM6N500 STARTADDR_DUMPMEM SPM7N500 NSAU_DUMPMEM SPM8N500 Subsch. ID : 370 Det. descr. : DUMP MEMORY USING ABSOLUTE ADDRESSES | SCM01500 0 <hex> f968 <hex> a6 <hex> | |
| | ET=+ UT=+00.00.02 | DUMP_MEMORY_RAW DUMP_MEMORY Command Parameter(s) : MEMORYID_DUMPMEM SPM6N500 STARTADDR_DUMPMEM SPM7N500 NSAU_DUMPMEM SPM8N500 Subsch. ID : 370 Det. descr. : DUMP MEMORY USING ABSOLUTE ADDRESSES | SCM01500 0 <hex> fa0d <hex> a6 <hex> | |

SpireEngSlowPMDump Dump and Check Memory (CRP)
 File: H_CRP_SPI_DUMP.xls
 Author: R. Biggins



| Step No. | Time | Activity/Remarks | TC/TLM | Display/ Branch |
|----------|----------------------|--|---|-----------------|
| | ET=+ UT=+00.00.02 | DUMP_MEMORY_RAW DUMP_MEMORY Command Parameter(s) : MEMORYID_DUMPMEM SPM6N500 STARTADDR_DUMPMEM SPM7N500 NSAU_DUMPMEM SPM8N500 Subsch. ID : 370 Det. descr. : DUMP MEMORY USING ABSOLUTE ADDRESSES | SCM01500 0 <hex> fab2 <hex> a6 <hex> | |
| | ET=+ UT=+00.00.02 | DUMP_MEMORY_RAW DUMP_MEMORY Command Parameter(s) : MEMORYID_DUMPMEM SPM6N500 STARTADDR_DUMPMEM SPM7N500 NSAU_DUMPMEM SPM8N500 Subsch. ID : 370 Det. descr. : DUMP MEMORY USING ABSOLUTE ADDRESSES | SCM01500 0 <hex> fb57 <hex> a6 <hex> | |
| | ET=+ UT=+00.00.02 | DUMP_MEMORY_RAW DUMP_MEMORY Command Parameter(s) : MEMORYID_DUMPMEM SPM6N500 STARTADDR_DUMPMEM SPM7N500 NSAU_DUMPMEM SPM8N500 Subsch. ID : 370 Det. descr. : DUMP MEMORY USING ABSOLUTE ADDRESSES | SCM01500 0 <hex> fbfc <hex> a6 <hex> | |
| | ET=+ UT=+00.00.02 | DUMP_MEMORY_RAW DUMP_MEMORY Command Parameter(s) : MEMORYID_DUMPMEM SPM6N500 STARTADDR_DUMPMEM SPM7N500 NSAU_DUMPMEM SPM8N500 Subsch. ID : 370 Det. descr. : DUMP MEMORY USING ABSOLUTE ADDRESSES | SCM01500 0 <hex> fca1 <hex> a6 <hex> | |
| | ET=+ UT=+00.00.02 | DUMP_MEMORY_RAW DUMP_MEMORY Command Parameter(s) : MEMORYID_DUMPMEM SPM6N500 STARTADDR_DUMPMEM SPM7N500 NSAU_DUMPMEM SPM8N500 Subsch. ID : 370 Det. descr. : DUMP MEMORY USING ABSOLUTE ADDRESSES | SCM01500 0 <hex> fd46 <hex> a6 <hex> | |

SpireEngSlowPMDump Dump and Check Memory (CRP)
 File: H_CRP_SPI_DUMP.xls
 Author: R. Biggins



| Step No. | Time | Activity/Remarks | TC/TLM | Display/ Branch |
|----------|----------------------|--|--|-----------------|
| | ET=+ UT=+00.00.02 | DUMP_MEMORY_RAW DUMP_MEMORY Command Parameter(s) : MEMORYID_DUMPMEM SPM6N500 STARTADDR_DUMPMEM SPM7N500 NSAU_DUMPMEM SPM8N500 Subsch. ID : 370 Det. descr. : DUMP MEMORY USING ABSOLUTE ADDRESSES | SCM01500 0 <hex> fdeb <hex> a6 <hex> | |
| | ET=+ UT=+00.00.02 | DUMP_MEMORY_RAW DUMP_MEMORY Command Parameter(s) : MEMORYID_DUMPMEM SPM6N500 STARTADDR_DUMPMEM SPM7N500 NSAU_DUMPMEM SPM8N500 Subsch. ID : 370 Det. descr. : DUMP MEMORY USING ABSOLUTE ADDRESSES | SCM01500 0 <hex> fe90 <hex> a6 <hex> | |
| | ET=+ UT=+00.00.02 | DUMP_MEMORY_RAW DUMP_MEMORY Command Parameter(s) : MEMORYID_DUMPMEM SPM6N500 STARTADDR_DUMPMEM SPM7N500 NSAU_DUMPMEM SPM8N500 Subsch. ID : 370 Det. descr. : DUMP MEMORY USING ABSOLUTE ADDRESSES | SCM01500 0 <hex> ff35 <hex> a6 <hex> | |
| | ET=+ UT=+00.00.02 | DUMP_MEMORY_RAW DUMP_MEMORY Command Parameter(s) : MEMORYID_DUMPMEM SPM6N500 STARTADDR_DUMPMEM SPM7N500 NSAU_DUMPMEM SPM8N500 Subsch. ID : 370 Det. descr. : DUMP MEMORY USING ABSOLUTE ADDRESSES | SCM01500 0 <hex> ffda <hex> a6 <hex> | |
| | ET=+ UT=+00.00.02 | DUMP_MEMORY_RAW DUMP_MEMORY Command Parameter(s) : MEMORYID_DUMPMEM SPM6N500 STARTADDR_DUMPMEM SPM7N500 NSAU_DUMPMEM SPM8N500 Subsch. ID : 370 Det. descr. : DUMP MEMORY USING ABSOLUTE ADDRESSES | SCM01500 0 <hex> 1007f <hex> a6 <hex> | |

SpireEngSlowPMDump Dump and Check Memory (CRP)
 File: H_CRP_SPI_DUMP.xls
 Author: R. Biggins



| Step No. | Time | Activity/Remarks | TC/TLM | Display/ Branch |
|----------|----------------------|--|--|-----------------|
| | ET=+ UT=+00.00.02 | DUMP_MEMORY_RAW DUMP_MEMORY Command Parameter(s) : MEMORYID_DUMPMEM SPM6N500 STARTADDR_DUMPMEM SPM7N500 NSAU_DUMPMEM SPM8N500 Subsch. ID : 370 Det. descr. : DUMP MEMORY USING ABSOLUTE ADDRESSES | SCM01500 0 <hex> 10124 <hex> a6 <hex> | |
| | ET=+ UT=+00.00.02 | DUMP_MEMORY_RAW DUMP_MEMORY Command Parameter(s) : MEMORYID_DUMPMEM SPM6N500 STARTADDR_DUMPMEM SPM7N500 NSAU_DUMPMEM SPM8N500 Subsch. ID : 370 Det. descr. : DUMP MEMORY USING ABSOLUTE ADDRESSES | SCM01500 0 <hex> 101c9 <hex> a6 <hex> | |
| | ET=+ UT=+00.00.02 | DUMP_MEMORY_RAW DUMP_MEMORY Command Parameter(s) : MEMORYID_DUMPMEM SPM6N500 STARTADDR_DUMPMEM SPM7N500 NSAU_DUMPMEM SPM8N500 Subsch. ID : 370 Det. descr. : DUMP MEMORY USING ABSOLUTE ADDRESSES | SCM01500 0 <hex> 1026e <hex> a6 <hex> | |
| | ET=+ UT=+00.00.02 | DUMP_MEMORY_RAW DUMP_MEMORY Command Parameter(s) : MEMORYID_DUMPMEM SPM6N500 STARTADDR_DUMPMEM SPM7N500 NSAU_DUMPMEM SPM8N500 Subsch. ID : 370 Det. descr. : DUMP MEMORY USING ABSOLUTE ADDRESSES | SCM01500 0 <hex> 10313 <hex> a6 <hex> | |
| | ET=+ UT=+00.00.02 | DUMP_MEMORY_RAW DUMP_MEMORY Command Parameter(s) : MEMORYID_DUMPMEM SPM6N500 STARTADDR_DUMPMEM SPM7N500 NSAU_DUMPMEM SPM8N500 Subsch. ID : 370 Det. descr. : DUMP MEMORY USING ABSOLUTE ADDRESSES | SCM01500 0 <hex> 103b8 <hex> a6 <hex> | |

SpireEngSlowPMDump Dump and Check Memory (CRP)
 File: H_CRP_SPI_DUMP.xls
 Author: R. Biggins



| Step No. | Time | Activity/Remarks | TC/TLM | Display/ Branch |
|----------|----------------------|---|--|-----------------|
| | ET=+ UT=+00.00.02 | DUMP_MEMORY_RAW DUMP_MEMORY Command Parameter(s) : MEMORYID_DUMPMEM SPM6N500 STARTADDR_DUMPMEM SPM7N500 NSAU_DUMPMEM SPM8N500 Subsch. ID : 370 Det. descr. : DUMP MEMORY USING ABSOLUTE ADDRESSES | SCM01500 0 <hex> 1045d <hex> a6 <hex> | |
| | ET=+ UT=+00.00.02 | DUMP_MEMORY_RAW DUMP_MEMORY Command Parameter(s) : MEMORYID_DUMPMEM SPM6N500 STARTADDR_DUMPMEM SPM7N500 NSAU_DUMPMEM SPM8N500 Subsch. ID : 370 Det. descr. : DUMP MEMORY USING ABSOLUTE ADDRESSES | SCM01500 0 <hex> 10502 <hex> a6 <hex> | |
| | ET=+ UT=+00.00.02 | DUMP_MEMORY_RAW DUMP_MEMORY Command Parameter(s) : MEMORYID_DUMPMEM SPM6N500 STARTADDR_DUMPMEM SPM7N500 NSAU_DUMPMEM SPM8N500 Subsch. ID : 370 Det. descr. : DUMP MEMORY USING ABSOLUTE ADDRESSES | SCM01500 0 <hex> 105a7 <hex> a6 <hex> | |
| | ET=+ UT=+00.00.02 | DUMP_MEMORY_RAW DUMP_MEMORY Command Parameter(s) : MEMORYID_DUMPMEM SPM6N500 STARTADDR_DUMPMEM SPM7N500 NSAU_DUMPMEM SPM8N500 Subsch. ID : 370 Det. descr. : DUMP MEMORY USING ABSOLUTE ADDRESSES | SCM01500 0 <hex> 1064c <hex> a6 <hex> | |
| | ET=+ UT=+00.00.02 | DUMP_MEMORY_RAW DUMP_MEMORY Command Parameter(s) : MEMORYID_DUMPMEM SPM6N500 STARTADDR_DUMPMEM SPM7N500 NSAU_DUMPMEM SPM8N500 Subsch. ID : 370 Det. descr. : DUMP MEMORY USING ABSOLUTE ADDRESSES | SCM01500 0 <hex> 106f1 <hex> a6 <hex> | |

SpireEngSlowPMDump Dump and Check Memory (CRP)
 File: H_CRP_SPI_DUMP.xls
 Author: R. Biggins



| Step No. | Time | Activity/Remarks | TC/TLM | Display/ Branch |
|----------|----------------------|--|--|-----------------|
| | ET=+ UT=+00.00.02 | DUMP_MEMORY_RAW DUMP_MEMORY Command Parameter(s) : MEMORYID_DUMPMEM SPM6N500 STARTADDR_DUMPMEM SPM7N500 NSAU_DUMPMEM SPM8N500 Subsch. ID : 370 Det. descr. : DUMP MEMORY USING ABSOLUTE ADDRESSES | SCM01500 0 <hex> 10796 <hex> a6 <hex> | |
| | ET=+ UT=+00.00.02 | DUMP_MEMORY_RAW DUMP_MEMORY Command Parameter(s) : MEMORYID_DUMPMEM SPM6N500 STARTADDR_DUMPMEM SPM7N500 NSAU_DUMPMEM SPM8N500 Subsch. ID : 370 Det. descr. : DUMP MEMORY USING ABSOLUTE ADDRESSES | SCM01500 0 <hex> 1083b <hex> a6 <hex> | |
| | ET=+ UT=+00.00.02 | DUMP_MEMORY_RAW DUMP_MEMORY Command Parameter(s) : MEMORYID_DUMPMEM SPM6N500 STARTADDR_DUMPMEM SPM7N500 NSAU_DUMPMEM SPM8N500 Subsch. ID : 370 Det. descr. : DUMP MEMORY USING ABSOLUTE ADDRESSES | SCM01500 0 <hex> 108e0 <hex> a6 <hex> | |
| | ET=+ UT=+00.00.02 | DUMP_MEMORY_RAW DUMP_MEMORY Command Parameter(s) : MEMORYID_DUMPMEM SPM6N500 STARTADDR_DUMPMEM SPM7N500 NSAU_DUMPMEM SPM8N500 Subsch. ID : 370 Det. descr. : DUMP MEMORY USING ABSOLUTE ADDRESSES | SCM01500 0 <hex> 10985 <hex> a6 <hex> | |
| | ET=+ UT=+00.00.02 | DUMP_MEMORY_RAW DUMP_MEMORY Command Parameter(s) : MEMORYID_DUMPMEM SPM6N500 STARTADDR_DUMPMEM SPM7N500 NSAU_DUMPMEM SPM8N500 Subsch. ID : 370 Det. descr. : DUMP MEMORY USING ABSOLUTE ADDRESSES | SCM01500 0 <hex> 10a2a <hex> a6 <hex> | |

SpireEngSlowPMDump Dump and Check Memory (CRP)
 File: H_CRP_SPI_DUMP.xls
 Author: R. Biggins



| Step No. | Time | Activity/Remarks | TC/TLM | Display/ Branch |
|----------|----------------------|--|--|-----------------|
| | ET=+ UT=+00.00.02 | DUMP_MEMORY_RAW DUMP_MEMORY Command Parameter(s) : MEMORYID_DUMPMEM SPM6N500 STARTADDR_DUMPMEM SPM7N500 NSAU_DUMPMEM SPM8N500 Subsch. ID : 370 Det. descr. : DUMP MEMORY USING ABSOLUTE ADDRESSES | SCM01500 0 <hex> 10acf <hex> a6 <hex> | |
| | ET=+ UT=+00.00.02 | DUMP_MEMORY_RAW DUMP_MEMORY Command Parameter(s) : MEMORYID_DUMPMEM SPM6N500 STARTADDR_DUMPMEM SPM7N500 NSAU_DUMPMEM SPM8N500 Subsch. ID : 370 Det. descr. : DUMP MEMORY USING ABSOLUTE ADDRESSES | SCM01500 0 <hex> 10b74 <hex> a6 <hex> | |
| | ET=+ UT=+00.00.02 | DUMP_MEMORY_RAW DUMP_MEMORY Command Parameter(s) : MEMORYID_DUMPMEM SPM6N500 STARTADDR_DUMPMEM SPM7N500 NSAU_DUMPMEM SPM8N500 Subsch. ID : 370 Det. descr. : DUMP MEMORY USING ABSOLUTE ADDRESSES | SCM01500 0 <hex> 10c19 <hex> a6 <hex> | |
| | ET=+ UT=+00.00.02 | DUMP_MEMORY_RAW DUMP_MEMORY Command Parameter(s) : MEMORYID_DUMPMEM SPM6N500 STARTADDR_DUMPMEM SPM7N500 NSAU_DUMPMEM SPM8N500 Subsch. ID : 370 Det. descr. : DUMP MEMORY USING ABSOLUTE ADDRESSES | SCM01500 0 <hex> 10cbe <hex> a6 <hex> | |
| | ET=+ UT=+00.00.02 | DUMP_MEMORY_RAW DUMP_MEMORY Command Parameter(s) : MEMORYID_DUMPMEM SPM6N500 STARTADDR_DUMPMEM SPM7N500 NSAU_DUMPMEM SPM8N500 Subsch. ID : 370 Det. descr. : DUMP MEMORY USING ABSOLUTE ADDRESSES | SCM01500 0 <hex> 10d63 <hex> a6 <hex> | |

SpireEngSlowPMDump Dump and Check Memory (CRP)
 File: H_CRP_SPI_DUMP.xls
 Author: R. Biggins



| Step No. | Time | Activity/Remarks | TC/TLM | Display/ Branch |
|----------|----------------------|--|--|-----------------|
| | ET=+ UT=+00.00.02 | DUMP_MEMORY_RAW DUMP_MEMORY Command Parameter(s) : MEMORYID_DUMPMEM SPM6N500 STARTADDR_DUMPMEM SPM7N500 NSAU_DUMPMEM SPM8N500 Subsch. ID : 370 Det. descr. : DUMP MEMORY USING ABSOLUTE ADDRESSES | SCM01500 0 <hex> 10e08 <hex> a6 <hex> | |
| | ET=+ UT=+00.00.02 | DUMP_MEMORY_RAW DUMP_MEMORY Command Parameter(s) : MEMORYID_DUMPMEM SPM6N500 STARTADDR_DUMPMEM SPM7N500 NSAU_DUMPMEM SPM8N500 Subsch. ID : 370 Det. descr. : DUMP MEMORY USING ABSOLUTE ADDRESSES | SCM01500 0 <hex> 10ead <hex> a6 <hex> | |
| | ET=+ UT=+00.00.02 | DUMP_MEMORY_RAW DUMP_MEMORY Command Parameter(s) : MEMORYID_DUMPMEM SPM6N500 STARTADDR_DUMPMEM SPM7N500 NSAU_DUMPMEM SPM8N500 Subsch. ID : 370 Det. descr. : DUMP MEMORY USING ABSOLUTE ADDRESSES | SCM01500 0 <hex> 10f52 <hex> a6 <hex> | |
| | ET=+ UT=+00.00.02 | DUMP_MEMORY_RAW DUMP_MEMORY Command Parameter(s) : MEMORYID_DUMPMEM SPM6N500 STARTADDR_DUMPMEM SPM7N500 NSAU_DUMPMEM SPM8N500 Subsch. ID : 370 Det. descr. : DUMP MEMORY USING ABSOLUTE ADDRESSES | SCM01500 0 <hex> 10ff7 <hex> a6 <hex> | |
| | ET=+ UT=+00.00.02 | DUMP_MEMORY_RAW DUMP_MEMORY Command Parameter(s) : MEMORYID_DUMPMEM SPM6N500 STARTADDR_DUMPMEM SPM7N500 NSAU_DUMPMEM SPM8N500 Subsch. ID : 370 Det. descr. : DUMP MEMORY USING ABSOLUTE ADDRESSES | SCM01500 0 <hex> 1109c <hex> a6 <hex> | |

SpireEngSlowPMDump Dump and Check Memory (CRP)
 File: H_CRP_SPI_DUMP.xls
 Author: R. Biggins



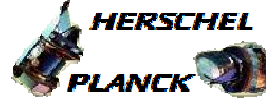
| Step No. | Time | Activity/Remarks | TC/TLM | Display/ Branch |
|----------|----------------------|--|--|-----------------|
| | ET=+ UT=+00.00.02 | DUMP_MEMORY_RAW DUMP_MEMORY Command Parameter(s) : MEMORYID_DUMPMEM SPM6N500 STARTADDR_DUMPMEM SPM7N500 NSAU_DUMPMEM SPM8N500 Subsch. ID : 370 Det. descr. : DUMP MEMORY USING ABSOLUTE ADDRESSES | SCM01500 0 <hex> 11141 <hex> a6 <hex> | |
| | ET=+ UT=+00.00.02 | DUMP_MEMORY_RAW DUMP_MEMORY Command Parameter(s) : MEMORYID_DUMPMEM SPM6N500 STARTADDR_DUMPMEM SPM7N500 NSAU_DUMPMEM SPM8N500 Subsch. ID : 370 Det. descr. : DUMP MEMORY USING ABSOLUTE ADDRESSES | SCM01500 0 <hex> 111e6 <hex> a6 <hex> | |
| | ET=+ UT=+00.00.02 | DUMP_MEMORY_RAW DUMP_MEMORY Command Parameter(s) : MEMORYID_DUMPMEM SPM6N500 STARTADDR_DUMPMEM SPM7N500 NSAU_DUMPMEM SPM8N500 Subsch. ID : 370 Det. descr. : DUMP MEMORY USING ABSOLUTE ADDRESSES | SCM01500 0 <hex> 1128b <hex> a6 <hex> | |
| | ET=+ UT=+00.00.02 | DUMP_MEMORY_RAW DUMP_MEMORY Command Parameter(s) : MEMORYID_DUMPMEM SPM6N500 STARTADDR_DUMPMEM SPM7N500 NSAU_DUMPMEM SPM8N500 Subsch. ID : 370 Det. descr. : DUMP MEMORY USING ABSOLUTE ADDRESSES | SCM01500 0 <hex> 11330 <hex> a6 <hex> | |
| | ET=+ UT=+00.00.02 | DUMP_MEMORY_RAW DUMP_MEMORY Command Parameter(s) : MEMORYID_DUMPMEM SPM6N500 STARTADDR_DUMPMEM SPM7N500 NSAU_DUMPMEM SPM8N500 Subsch. ID : 370 Det. descr. : DUMP MEMORY USING ABSOLUTE ADDRESSES | SCM01500 0 <hex> 113d5 <hex> a6 <hex> | |

SpireEngSlowPMDump Dump and Check Memory (CRP)
 File: H_CRP_SPI_DUMP.xls
 Author: R. Biggins



| Step No. | Time | Activity/Remarks | TC/TLM | Display/ Branch |
|----------|----------------------|--|--|-----------------|
| | ET=+ UT=+00.00.02 | DUMP_MEMORY_RAW DUMP_MEMORY Command Parameter(s) : MEMORYID_DUMPMEM SPM6N500 STARTADDR_DUMPMEM SPM7N500 NSAU_DUMPMEM SPM8N500 Subsch. ID : 370 Det. descr. : DUMP MEMORY USING ABSOLUTE ADDRESSES | SCM01500 0 <hex> 1147a <hex> a6 <hex> | |
| | ET=+ UT=+00.00.02 | DUMP_MEMORY_RAW DUMP_MEMORY Command Parameter(s) : MEMORYID_DUMPMEM SPM6N500 STARTADDR_DUMPMEM SPM7N500 NSAU_DUMPMEM SPM8N500 Subsch. ID : 370 Det. descr. : DUMP MEMORY USING ABSOLUTE ADDRESSES | SCM01500 0 <hex> 1151f <hex> a6 <hex> | |
| | ET=+ UT=+00.00.02 | DUMP_MEMORY_RAW DUMP_MEMORY Command Parameter(s) : MEMORYID_DUMPMEM SPM6N500 STARTADDR_DUMPMEM SPM7N500 NSAU_DUMPMEM SPM8N500 Subsch. ID : 370 Det. descr. : DUMP MEMORY USING ABSOLUTE ADDRESSES | SCM01500 0 <hex> 115c4 <hex> a6 <hex> | |
| | ET=+ UT=+00.00.02 | DUMP_MEMORY_RAW DUMP_MEMORY Command Parameter(s) : MEMORYID_DUMPMEM SPM6N500 STARTADDR_DUMPMEM SPM7N500 NSAU_DUMPMEM SPM8N500 Subsch. ID : 370 Det. descr. : DUMP MEMORY USING ABSOLUTE ADDRESSES | SCM01500 0 <hex> 11669 <hex> a6 <hex> | |
| | ET=+ UT=+00.00.02 | DUMP_MEMORY_RAW DUMP_MEMORY Command Parameter(s) : MEMORYID_DUMPMEM SPM6N500 STARTADDR_DUMPMEM SPM7N500 NSAU_DUMPMEM SPM8N500 Subsch. ID : 370 Det. descr. : DUMP MEMORY USING ABSOLUTE ADDRESSES | SCM01500 0 <hex> 1170e <hex> a6 <hex> | |

SpireEngSlowPMDump Dump and Check Memory (CRP)
 File: H_CRP_SPI_DUMP.xls
 Author: R. Biggins



| Step No. | Time | Activity/Remarks | TC/TLM | Display/ Branch |
|----------|----------------------|--|--|-----------------|
| | ET=+ UT=+00.00.02 | DUMP_MEMORY_RAW DUMP_MEMORY Command Parameter(s) : MEMORYID_DUMPMEM SPM6N500 STARTADDR_DUMPMEM SPM7N500 NSAU_DUMPMEM SPM8N500 Subsch. ID : 370 Det. descr. : DUMP MEMORY USING ABSOLUTE ADDRESSES | SCM01500 0 <hex> 117b3 <hex> a6 <hex> | |
| | ET=+ UT=+00.00.02 | DUMP_MEMORY_RAW DUMP_MEMORY Command Parameter(s) : MEMORYID_DUMPMEM SPM6N500 STARTADDR_DUMPMEM SPM7N500 NSAU_DUMPMEM SPM8N500 Subsch. ID : 370 Det. descr. : DUMP MEMORY USING ABSOLUTE ADDRESSES | SCM01500 0 <hex> 11858 <hex> a6 <hex> | |
| | ET=+ UT=+00.00.02 | DUMP_MEMORY_RAW DUMP_MEMORY Command Parameter(s) : MEMORYID_DUMPMEM SPM6N500 STARTADDR_DUMPMEM SPM7N500 NSAU_DUMPMEM SPM8N500 Subsch. ID : 370 Det. descr. : DUMP MEMORY USING ABSOLUTE ADDRESSES | SCM01500 0 <hex> 118fd <hex> a6 <hex> | |
| | ET=+ UT=+00.00.02 | DUMP_MEMORY_RAW DUMP_MEMORY Command Parameter(s) : MEMORYID_DUMPMEM SPM6N500 STARTADDR_DUMPMEM SPM7N500 NSAU_DUMPMEM SPM8N500 Subsch. ID : 370 Det. descr. : DUMP MEMORY USING ABSOLUTE ADDRESSES | SCM01500 0 <hex> 119a2 <hex> a6 <hex> | |
| | ET=+ UT=+00.00.02 | DUMP_MEMORY_RAW DUMP_MEMORY Command Parameter(s) : MEMORYID_DUMPMEM SPM6N500 STARTADDR_DUMPMEM SPM7N500 NSAU_DUMPMEM SPM8N500 Subsch. ID : 370 Det. descr. : DUMP MEMORY USING ABSOLUTE ADDRESSES | SCM01500 0 <hex> 11a47 <hex> a6 <hex> | |

SpireEngSlowPMDump Dump and Check Memory (CRP)
 File: H_CRP_SPI_DUMP.xls
 Author: R. Biggins



| Step No. | Time | Activity/Remarks | TC/TLM | Display/ Branch |
|----------|----------------------|--|--|-----------------|
| | ET=+ UT=+00.00.02 | DUMP_MEMORY_RAW DUMP_MEMORY Command Parameter(s) : MEMORYID_DUMPMEM SPM6N500 STARTADDR_DUMPMEM SPM7N500 NSAU_DUMPMEM SPM8N500 Subsch. ID : 370 Det. descr. : DUMP MEMORY USING ABSOLUTE ADDRESSES | SCM01500 0 <hex> 11aec <hex> a6 <hex> | |
| | ET=+ UT=+00.00.02 | DUMP_MEMORY_RAW DUMP_MEMORY Command Parameter(s) : MEMORYID_DUMPMEM SPM6N500 STARTADDR_DUMPMEM SPM7N500 NSAU_DUMPMEM SPM8N500 Subsch. ID : 370 Det. descr. : DUMP MEMORY USING ABSOLUTE ADDRESSES | SCM01500 0 <hex> 11b91 <hex> a6 <hex> | |
| | ET=+ UT=+00.00.02 | DUMP_MEMORY_RAW DUMP_MEMORY Command Parameter(s) : MEMORYID_DUMPMEM SPM6N500 STARTADDR_DUMPMEM SPM7N500 NSAU_DUMPMEM SPM8N500 Subsch. ID : 370 Det. descr. : DUMP MEMORY USING ABSOLUTE ADDRESSES | SCM01500 0 <hex> 11c36 <hex> a6 <hex> | |
| | ET=+ UT=+00.00.02 | DUMP_MEMORY_RAW DUMP_MEMORY Command Parameter(s) : MEMORYID_DUMPMEM SPM6N500 STARTADDR_DUMPMEM SPM7N500 NSAU_DUMPMEM SPM8N500 Subsch. ID : 370 Det. descr. : DUMP MEMORY USING ABSOLUTE ADDRESSES | SCM01500 0 <hex> 11cdb <hex> a6 <hex> | |
| | ET=+ UT=+00.00.02 | DUMP_MEMORY_RAW DUMP_MEMORY Command Parameter(s) : MEMORYID_DUMPMEM SPM6N500 STARTADDR_DUMPMEM SPM7N500 NSAU_DUMPMEM SPM8N500 Subsch. ID : 370 Det. descr. : DUMP MEMORY USING ABSOLUTE ADDRESSES | SCM01500 0 <hex> 11d80 <hex> a6 <hex> | |

SpireEngSlowPMDump Dump and Check Memory (CRP)
 File: H_CRP_SPI_DUMP.xls
 Author: R. Biggins



| Step No. | Time | Activity/Remarks | TC/TLM | Display/ Branch |
|----------|----------------------|--|--|-----------------|
| | ET=+ UT=+00.00.02 | DUMP_MEMORY_RAW DUMP_MEMORY Command Parameter(s) : MEMORYID_DUMPMEM SPM6N500 STARTADDR_DUMPMEM SPM7N500 NSAU_DUMPMEM SPM8N500 Subsch. ID : 370 Det. descr. : DUMP MEMORY USING ABSOLUTE ADDRESSES | SCM01500 0 <hex> 11e25 <hex> a6 <hex> | |
| | ET=+ UT=+00.00.02 | DUMP_MEMORY_RAW DUMP_MEMORY Command Parameter(s) : MEMORYID_DUMPMEM SPM6N500 STARTADDR_DUMPMEM SPM7N500 NSAU_DUMPMEM SPM8N500 Subsch. ID : 370 Det. descr. : DUMP MEMORY USING ABSOLUTE ADDRESSES | SCM01500 0 <hex> 11eca <hex> a6 <hex> | |
| | ET=+ UT=+00.00.02 | DUMP_MEMORY_RAW DUMP_MEMORY Command Parameter(s) : MEMORYID_DUMPMEM SPM6N500 STARTADDR_DUMPMEM SPM7N500 NSAU_DUMPMEM SPM8N500 Subsch. ID : 370 Det. descr. : DUMP MEMORY USING ABSOLUTE ADDRESSES | SCM01500 0 <hex> 11f6f <hex> a6 <hex> | |
| | ET=+ UT=+00.00.02 | DUMP_MEMORY_RAW DUMP_MEMORY Command Parameter(s) : MEMORYID_DUMPMEM SPM6N500 STARTADDR_DUMPMEM SPM7N500 NSAU_DUMPMEM SPM8N500 Subsch. ID : 370 Det. descr. : DUMP MEMORY USING ABSOLUTE ADDRESSES | SCM01500 0 <hex> 12014 <hex> a6 <hex> | |
| | ET=+ UT=+00.00.02 | DUMP_MEMORY_RAW DUMP_MEMORY Command Parameter(s) : MEMORYID_DUMPMEM SPM6N500 STARTADDR_DUMPMEM SPM7N500 NSAU_DUMPMEM SPM8N500 Subsch. ID : 370 Det. descr. : DUMP MEMORY USING ABSOLUTE ADDRESSES | SCM01500 0 <hex> 120b9 <hex> a6 <hex> | |

SpireEngSlowPMDump Dump and Check Memory (CRP)
 File: H_CRP_SPI_DUMP.xls
 Author: R. Biggins



| Step No. | Time | Activity/Remarks | TC/TLM | Display/ Branch |
|----------|----------------------|--|--|-----------------|
| | ET=+ UT=+00.00.02 | DUMP_MEMORY_RAW DUMP_MEMORY Command Parameter(s) : MEMORYID_DUMPMEM SPM6N500 STARTADDR_DUMPMEM SPM7N500 NSAU_DUMPMEM SPM8N500 Subsch. ID : 370 Det. descr. : DUMP MEMORY USING ABSOLUTE ADDRESSES | SCM01500 0 <hex> 1215e <hex> a6 <hex> | |
| | ET=+ UT=+00.00.02 | DUMP_MEMORY_RAW DUMP_MEMORY Command Parameter(s) : MEMORYID_DUMPMEM SPM6N500 STARTADDR_DUMPMEM SPM7N500 NSAU_DUMPMEM SPM8N500 Subsch. ID : 370 Det. descr. : DUMP MEMORY USING ABSOLUTE ADDRESSES | SCM01500 0 <hex> 12203 <hex> a6 <hex> | |
| | ET=+ UT=+00.00.02 | DUMP_MEMORY_RAW DUMP_MEMORY Command Parameter(s) : MEMORYID_DUMPMEM SPM6N500 STARTADDR_DUMPMEM SPM7N500 NSAU_DUMPMEM SPM8N500 Subsch. ID : 370 Det. descr. : DUMP MEMORY USING ABSOLUTE ADDRESSES | SCM01500 0 <hex> 122a8 <hex> a6 <hex> | |
| | ET=+ UT=+00.00.02 | DUMP_MEMORY_RAW DUMP_MEMORY Command Parameter(s) : MEMORYID_DUMPMEM SPM6N500 STARTADDR_DUMPMEM SPM7N500 NSAU_DUMPMEM SPM8N500 Subsch. ID : 370 Det. descr. : DUMP MEMORY USING ABSOLUTE ADDRESSES | SCM01500 0 <hex> 1234d <hex> a6 <hex> | |
| | ET=+ UT=+00.00.02 | DUMP_MEMORY_RAW DUMP_MEMORY Command Parameter(s) : MEMORYID_DUMPMEM SPM6N500 STARTADDR_DUMPMEM SPM7N500 NSAU_DUMPMEM SPM8N500 Subsch. ID : 370 Det. descr. : DUMP MEMORY USING ABSOLUTE ADDRESSES | SCM01500 0 <hex> 123f2 <hex> a6 <hex> | |

SpireEngSlowPMDump Dump and Check Memory (CRP)
 File: H_CRP_SPI_DUMP.xls
 Author: R. Biggins



| Step No. | Time | Activity/Remarks | TC/TLM | Display/ Branch |
|----------|----------------------|--|--|-----------------|
| | ET=+ UT=+00.00.02 | DUMP_MEMORY_RAW DUMP_MEMORY Command Parameter(s) : MEMORYID_DUMPMEM SPM6N500 STARTADDR_DUMPMEM SPM7N500 NSAU_DUMPMEM SPM8N500 Subsch. ID : 370 Det. descr. : DUMP MEMORY USING ABSOLUTE ADDRESSES | SCM01500 0 <hex> 12497 <hex> a6 <hex> | |
| | ET=+ UT=+00.00.02 | DUMP_MEMORY_RAW DUMP_MEMORY Command Parameter(s) : MEMORYID_DUMPMEM SPM6N500 STARTADDR_DUMPMEM SPM7N500 NSAU_DUMPMEM SPM8N500 Subsch. ID : 370 Det. descr. : DUMP MEMORY USING ABSOLUTE ADDRESSES | SCM01500 0 <hex> 1253c <hex> a6 <hex> | |
| | ET=+ UT=+00.00.02 | DUMP_MEMORY_RAW DUMP_MEMORY Command Parameter(s) : MEMORYID_DUMPMEM SPM6N500 STARTADDR_DUMPMEM SPM7N500 NSAU_DUMPMEM SPM8N500 Subsch. ID : 370 Det. descr. : DUMP MEMORY USING ABSOLUTE ADDRESSES | SCM01500 0 <hex> 125e1 <hex> a6 <hex> | |
| | ET=+ UT=+00.00.02 | DUMP_MEMORY_RAW DUMP_MEMORY Command Parameter(s) : MEMORYID_DUMPMEM SPM6N500 STARTADDR_DUMPMEM SPM7N500 NSAU_DUMPMEM SPM8N500 Subsch. ID : 370 Det. descr. : DUMP MEMORY USING ABSOLUTE ADDRESSES | SCM01500 0 <hex> 12686 <hex> a6 <hex> | |
| | ET=+ UT=+00.00.02 | DUMP_MEMORY_RAW DUMP_MEMORY Command Parameter(s) : MEMORYID_DUMPMEM SPM6N500 STARTADDR_DUMPMEM SPM7N500 NSAU_DUMPMEM SPM8N500 Subsch. ID : 370 Det. descr. : DUMP MEMORY USING ABSOLUTE ADDRESSES | SCM01500 0 <hex> 1272b <hex> a6 <hex> | |

SpireEngSlowPMDump Dump and Check Memory (CRP)
 File: H_CRP_SPI_DUMP.xls
 Author: R. Biggins



| Step No. | Time | Activity/Remarks | TC/TLM | Display/ Branch |
|----------|----------------------|--|--|-----------------|
| | ET=+ UT=+00.00.02 | DUMP_MEMORY_RAW DUMP_MEMORY Command Parameter(s) : MEMORYID_DUMPMEM SPM6N500 STARTADDR_DUMPMEM SPM7N500 NSAU_DUMPMEM SPM8N500 Subsch. ID : 370 Det. descr. : DUMP MEMORY USING ABSOLUTE ADDRESSES | SCM01500 0 <hex> 127d0 <hex> a6 <hex> | |
| | ET=+ UT=+00.00.02 | DUMP_MEMORY_RAW DUMP_MEMORY Command Parameter(s) : MEMORYID_DUMPMEM SPM6N500 STARTADDR_DUMPMEM SPM7N500 NSAU_DUMPMEM SPM8N500 Subsch. ID : 370 Det. descr. : DUMP MEMORY USING ABSOLUTE ADDRESSES | SCM01500 0 <hex> 12875 <hex> a6 <hex> | |
| | ET=+ UT=+00.00.02 | DUMP_MEMORY_RAW DUMP_MEMORY Command Parameter(s) : MEMORYID_DUMPMEM SPM6N500 STARTADDR_DUMPMEM SPM7N500 NSAU_DUMPMEM SPM8N500 Subsch. ID : 370 Det. descr. : DUMP MEMORY USING ABSOLUTE ADDRESSES | SCM01500 0 <hex> 1291a <hex> a6 <hex> | |
| | ET=+ UT=+00.00.02 | DUMP_MEMORY_RAW DUMP_MEMORY Command Parameter(s) : MEMORYID_DUMPMEM SPM6N500 STARTADDR_DUMPMEM SPM7N500 NSAU_DUMPMEM SPM8N500 Subsch. ID : 370 Det. descr. : DUMP MEMORY USING ABSOLUTE ADDRESSES | SCM01500 0 <hex> 129bf <hex> a6 <hex> | |
| | ET=+ UT=+00.00.02 | DUMP_MEMORY_RAW DUMP_MEMORY Command Parameter(s) : MEMORYID_DUMPMEM SPM6N500 STARTADDR_DUMPMEM SPM7N500 NSAU_DUMPMEM SPM8N500 Subsch. ID : 370 Det. descr. : DUMP MEMORY USING ABSOLUTE ADDRESSES | SCM01500 0 <hex> 12a64 <hex> a6 <hex> | |

SpireEngSlowPMDump Dump and Check Memory (CRP)
 File: H_CRP_SPI_DUMP.xls
 Author: R. Biggins



| Step No. | Time | Activity/Remarks | TC/TLM | Display/ Branch |
|----------|----------------------|---|--|-----------------|
| | ET=+ UT=+00.00.02 | DUMP_MEMORY_RAW DUMP_MEMORY Command Parameter(s) : MEMORYID_DUMPMEM SPM6N500 STARTADDR_DUMPMEM SPM7N500 NSAU_DUMPMEM SPM8N500 Subsch. ID : 370 Det. descr. : DUMP MEMORY USING ABSOLUTE ADDRESSES | SCM01500 0 <hex> 12b09 <hex> a6 <hex> | |
| | ET=+ UT=+00.00.02 | DUMP_MEMORY_RAW DUMP_MEMORY Command Parameter(s) : MEMORYID_DUMPMEM SPM6N500 STARTADDR_DUMPMEM SPM7N500 NSAU_DUMPMEM SPM8N500 Subsch. ID : 370 Det. descr. : DUMP MEMORY USING ABSOLUTE ADDRESSES | SCM01500 0 <hex> 12bae <hex> a6 <hex> | |
| | ET=+ UT=+00.00.02 | DUMP_MEMORY_RAW DUMP_MEMORY Command Parameter(s) : MEMORYID_DUMPMEM SPM6N500 STARTADDR_DUMPMEM SPM7N500 NSAU_DUMPMEM SPM8N500 Subsch. ID : 370 Det. descr. : DUMP MEMORY USING ABSOLUTE ADDRESSES | SCM01500 0 <hex> 12c53 <hex> a6 <hex> | |
| | ET=+ UT=+00.00.02 | DUMP_MEMORY_RAW DUMP_MEMORY Command Parameter(s) : MEMORYID_DUMPMEM SPM6N500 STARTADDR_DUMPMEM SPM7N500 NSAU_DUMPMEM SPM8N500 Subsch. ID : 370 Det. descr. : DUMP MEMORY USING ABSOLUTE ADDRESSES | SCM01500 0 <hex> 12cf8 <hex> a6 <hex> | |
| | ET=+ UT=+00.00.02 | DUMP_MEMORY_RAW DUMP_MEMORY Command Parameter(s) : MEMORYID_DUMPMEM SPM6N500 STARTADDR_DUMPMEM SPM7N500 NSAU_DUMPMEM SPM8N500 Subsch. ID : 370 Det. descr. : DUMP MEMORY USING ABSOLUTE ADDRESSES | SCM01500 0 <hex> 12d9d <hex> a6 <hex> | |

SpireEngSlowPMDump Dump and Check Memory (CRP)
 File: H_CRP_SPI_DUMP.xls
 Author: R. Biggins



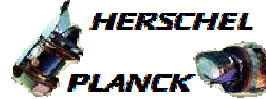
| Step No. | Time | Activity/Remarks | TC/TLM | Display/ Branch |
|----------|----------------------|--|--|-----------------|
| | ET=+ UT=+00.00.02 | DUMP_MEMORY_RAW DUMP_MEMORY Command Parameter(s) : MEMORYID_DUMPMEM SPM6N500 STARTADDR_DUMPMEM SPM7N500 NSAU_DUMPMEM SPM8N500 Subsch. ID : 370 Det. descr. : DUMP MEMORY USING ABSOLUTE ADDRESSES | SCM01500 0 <hex> 12e42 <hex> a6 <hex> | |
| | ET=+ UT=+00.00.02 | DUMP_MEMORY_RAW DUMP_MEMORY Command Parameter(s) : MEMORYID_DUMPMEM SPM6N500 STARTADDR_DUMPMEM SPM7N500 NSAU_DUMPMEM SPM8N500 Subsch. ID : 370 Det. descr. : DUMP MEMORY USING ABSOLUTE ADDRESSES | SCM01500 0 <hex> 12ee7 <hex> a6 <hex> | |
| | ET=+ UT=+00.00.02 | DUMP_MEMORY_RAW DUMP_MEMORY Command Parameter(s) : MEMORYID_DUMPMEM SPM6N500 STARTADDR_DUMPMEM SPM7N500 NSAU_DUMPMEM SPM8N500 Subsch. ID : 370 Det. descr. : DUMP MEMORY USING ABSOLUTE ADDRESSES | SCM01500 0 <hex> 12f8c <hex> a6 <hex> | |
| | ET=+ UT=+00.00.02 | DUMP_MEMORY_RAW DUMP_MEMORY Command Parameter(s) : MEMORYID_DUMPMEM SPM6N500 STARTADDR_DUMPMEM SPM7N500 NSAU_DUMPMEM SPM8N500 Subsch. ID : 370 Det. descr. : DUMP MEMORY USING ABSOLUTE ADDRESSES | SCM01500 0 <hex> 13031 <hex> a6 <hex> | |
| | ET=+ UT=+00.00.02 | DUMP_MEMORY_RAW DUMP_MEMORY Command Parameter(s) : MEMORYID_DUMPMEM SPM6N500 STARTADDR_DUMPMEM SPM7N500 NSAU_DUMPMEM SPM8N500 Subsch. ID : 370 Det. descr. : DUMP MEMORY USING ABSOLUTE ADDRESSES | SCM01500 0 <hex> 130d6 <hex> a6 <hex> | |

SpireEngSlowPMDump Dump and Check Memory (CRP)
 File: H_CRP_SPI_DUMP.xls
 Author: R. Biggins



| Step No. | Time | Activity/Remarks | TC/TLM | Display/ Branch |
|----------|----------------------|--|--|-----------------|
| | ET=+ UT=+00.00.02 | DUMP_MEMORY_RAW DUMP_MEMORY Command Parameter(s) : MEMORYID_DUMPMEM SPM6N500 STARTADDR_DUMPMEM SPM7N500 NSAU_DUMPMEM SPM8N500 Subsch. ID : 370 Det. descr. : DUMP MEMORY USING ABSOLUTE ADDRESSES | SCM01500 0 <hex> 1317b <hex> a6 <hex> | |
| | ET=+ UT=+00.00.02 | DUMP_MEMORY_RAW DUMP_MEMORY Command Parameter(s) : MEMORYID_DUMPMEM SPM6N500 STARTADDR_DUMPMEM SPM7N500 NSAU_DUMPMEM SPM8N500 Subsch. ID : 370 Det. descr. : DUMP MEMORY USING ABSOLUTE ADDRESSES | SCM01500 0 <hex> 13220 <hex> a6 <hex> | |
| | ET=+ UT=+00.00.02 | DUMP_MEMORY_RAW DUMP_MEMORY Command Parameter(s) : MEMORYID_DUMPMEM SPM6N500 STARTADDR_DUMPMEM SPM7N500 NSAU_DUMPMEM SPM8N500 Subsch. ID : 370 Det. descr. : DUMP MEMORY USING ABSOLUTE ADDRESSES | SCM01500 0 <hex> 132c5 <hex> a6 <hex> | |
| | ET=+ UT=+00.00.02 | DUMP_MEMORY_RAW DUMP_MEMORY Command Parameter(s) : MEMORYID_DUMPMEM SPM6N500 STARTADDR_DUMPMEM SPM7N500 NSAU_DUMPMEM SPM8N500 Subsch. ID : 370 Det. descr. : DUMP MEMORY USING ABSOLUTE ADDRESSES | SCM01500 0 <hex> 1336a <hex> a6 <hex> | |
| | ET=+ UT=+00.00.02 | DUMP_MEMORY_RAW DUMP_MEMORY Command Parameter(s) : MEMORYID_DUMPMEM SPM6N500 STARTADDR_DUMPMEM SPM7N500 NSAU_DUMPMEM SPM8N500 Subsch. ID : 370 Det. descr. : DUMP MEMORY USING ABSOLUTE ADDRESSES | SCM01500 0 <hex> 1340f <hex> a6 <hex> | |

SpireEngSlowPMDump Dump and Check Memory (CRP)
 File: H_CRP_SPI_DUMP.xls
 Author: R. Biggins



| Step No. | Time | Activity/Remarks | TC/TLM | Display/ Branch |
|----------|----------------------|--|--|-----------------|
| | ET=+ UT=+00.00.02 | DUMP_MEMORY_RAW DUMP_MEMORY Command Parameter(s) : MEMORYID_DUMPMEM SPM6N500 STARTADDR_DUMPMEM SPM7N500 NSAU_DUMPMEM SPM8N500 Subsch. ID : 370 Det. descr. : DUMP MEMORY USING ABSOLUTE ADDRESSES | SCM01500 0 <hex> 134b4 <hex> a6 <hex> | |
| | ET=+ UT=+00.00.02 | DUMP_MEMORY_RAW DUMP_MEMORY Command Parameter(s) : MEMORYID_DUMPMEM SPM6N500 STARTADDR_DUMPMEM SPM7N500 NSAU_DUMPMEM SPM8N500 Subsch. ID : 370 Det. descr. : DUMP MEMORY USING ABSOLUTE ADDRESSES | SCM01500 0 <hex> 13559 <hex> a6 <hex> | |
| | ET=+ UT=+00.00.02 | DUMP_MEMORY_RAW DUMP_MEMORY Command Parameter(s) : MEMORYID_DUMPMEM SPM6N500 STARTADDR_DUMPMEM SPM7N500 NSAU_DUMPMEM SPM8N500 Subsch. ID : 370 Det. descr. : DUMP MEMORY USING ABSOLUTE ADDRESSES | SCM01500 0 <hex> 135fe <hex> a6 <hex> | |
| | ET=+ UT=+00.00.02 | DUMP_MEMORY_RAW DUMP_MEMORY Command Parameter(s) : MEMORYID_DUMPMEM SPM6N500 STARTADDR_DUMPMEM SPM7N500 NSAU_DUMPMEM SPM8N500 Subsch. ID : 370 Det. descr. : DUMP MEMORY USING ABSOLUTE ADDRESSES | SCM01500 0 <hex> 136a3 <hex> a6 <hex> | |
| | ET=+ UT=+00.00.02 | DUMP_MEMORY_RAW DUMP_MEMORY Command Parameter(s) : MEMORYID_DUMPMEM SPM6N500 STARTADDR_DUMPMEM SPM7N500 NSAU_DUMPMEM SPM8N500 Subsch. ID : 370 Det. descr. : DUMP MEMORY USING ABSOLUTE ADDRESSES | SCM01500 0 <hex> 13748 <hex> a6 <hex> | |

SpireEngSlowPMDump Dump and Check Memory (CRP)
 File: H_CRP_SPI_DUMP.xls
 Author: R. Biggins



| Step No. | Time | Activity/Remarks | TC/TLM | Display/ Branch |
|----------|----------------------|--|--|-----------------|
| | ET=+ UT=+00.00.02 | DUMP_MEMORY_RAW DUMP_MEMORY Command Parameter(s) : MEMORYID_DUMPMEM SPM6N500 STARTADDR_DUMPMEM SPM7N500 NSAU_DUMPMEM SPM8N500 Subsch. ID : 370 Det. descr. : DUMP MEMORY USING ABSOLUTE ADDRESSES | SCM01500 0 <hex> 137ed <hex> a6 <hex> | |
| | ET=+ UT=+00.00.02 | DUMP_MEMORY_RAW DUMP_MEMORY Command Parameter(s) : MEMORYID_DUMPMEM SPM6N500 STARTADDR_DUMPMEM SPM7N500 NSAU_DUMPMEM SPM8N500 Subsch. ID : 370 Det. descr. : DUMP MEMORY USING ABSOLUTE ADDRESSES | SCM01500 0 <hex> 13892 <hex> a6 <hex> | |
| | ET=+ UT=+00.00.02 | DUMP_MEMORY_RAW DUMP_MEMORY Command Parameter(s) : MEMORYID_DUMPMEM SPM6N500 STARTADDR_DUMPMEM SPM7N500 NSAU_DUMPMEM SPM8N500 Subsch. ID : 370 Det. descr. : DUMP MEMORY USING ABSOLUTE ADDRESSES | SCM01500 0 <hex> 13937 <hex> a6 <hex> | |
| | ET=+ UT=+00.00.02 | DUMP_MEMORY_RAW DUMP_MEMORY Command Parameter(s) : MEMORYID_DUMPMEM SPM6N500 STARTADDR_DUMPMEM SPM7N500 NSAU_DUMPMEM SPM8N500 Subsch. ID : 370 Det. descr. : DUMP MEMORY USING ABSOLUTE ADDRESSES | SCM01500 0 <hex> 139dc <hex> a6 <hex> | |
| | ET=+ UT=+00.00.02 | DUMP_MEMORY_RAW DUMP_MEMORY Command Parameter(s) : MEMORYID_DUMPMEM SPM6N500 STARTADDR_DUMPMEM SPM7N500 NSAU_DUMPMEM SPM8N500 Subsch. ID : 370 Det. descr. : DUMP MEMORY USING ABSOLUTE ADDRESSES | SCM01500 0 <hex> 13a81 <hex> a6 <hex> | |

SpireEngSlowPMDump Dump and Check Memory (CRP)
 File: H_CRP_SPI_DUMP.xls
 Author: R. Biggins



| Step No. | Time | Activity/Remarks | TC/TLM | Display/ Branch |
|----------|----------------------|--|--|-----------------|
| | ET=+ UT=+00.00.02 | DUMP_MEMORY_RAW DUMP_MEMORY Command Parameter(s) : MEMORYID_DUMPMEM SPM6N500 STARTADDR_DUMPMEM SPM7N500 NSAU_DUMPMEM SPM8N500 Subsch. ID : 370 Det. descr. : DUMP MEMORY USING ABSOLUTE ADDRESSES | SCM01500 0 <hex> 13b26 <hex> a6 <hex> | |
| | ET=+ UT=+00.00.02 | DUMP_MEMORY_RAW DUMP_MEMORY Command Parameter(s) : MEMORYID_DUMPMEM SPM6N500 STARTADDR_DUMPMEM SPM7N500 NSAU_DUMPMEM SPM8N500 Subsch. ID : 370 Det. descr. : DUMP MEMORY USING ABSOLUTE ADDRESSES | SCM01500 0 <hex> 13bcb <hex> a6 <hex> | |
| | ET=+ UT=+00.00.02 | DUMP_MEMORY_RAW DUMP_MEMORY Command Parameter(s) : MEMORYID_DUMPMEM SPM6N500 STARTADDR_DUMPMEM SPM7N500 NSAU_DUMPMEM SPM8N500 Subsch. ID : 370 Det. descr. : DUMP MEMORY USING ABSOLUTE ADDRESSES | SCM01500 0 <hex> 13c70 <hex> a6 <hex> | |
| | ET=+ UT=+00.00.02 | DUMP_MEMORY_RAW DUMP_MEMORY Command Parameter(s) : MEMORYID_DUMPMEM SPM6N500 STARTADDR_DUMPMEM SPM7N500 NSAU_DUMPMEM SPM8N500 Subsch. ID : 370 Det. descr. : DUMP MEMORY USING ABSOLUTE ADDRESSES | SCM01500 0 <hex> 13d15 <hex> a6 <hex> | |
| | ET=+ UT=+00.00.02 | DUMP_MEMORY_RAW DUMP_MEMORY Command Parameter(s) : MEMORYID_DUMPMEM SPM6N500 STARTADDR_DUMPMEM SPM7N500 NSAU_DUMPMEM SPM8N500 Subsch. ID : 370 Det. descr. : DUMP MEMORY USING ABSOLUTE ADDRESSES | SCM01500 0 <hex> 13dba <hex> a6 <hex> | |

SpireEngSlowPMDump Dump and Check Memory (CRP)
 File: H_CRP_SPI_DUMP.xls
 Author: R. Biggins



| Step No. | Time | Activity/Remarks | TC/TLM | Display/ Branch |
|----------|----------------------|--|--|-----------------|
| | ET=+ UT=+00.00.02 | DUMP_MEMORY_RAW DUMP_MEMORY Command Parameter(s) : MEMORYID_DUMPMEM SPM6N500 STARTADDR_DUMPMEM SPM7N500 NSAU_DUMPMEM SPM8N500 Subsch. ID : 370 Det. descr. : DUMP MEMORY USING ABSOLUTE ADDRESSES | SCM01500 0 <hex> 13e5f <hex> a6 <hex> | |
| | ET=+ UT=+00.00.02 | DUMP_MEMORY_RAW DUMP_MEMORY Command Parameter(s) : MEMORYID_DUMPMEM SPM6N500 STARTADDR_DUMPMEM SPM7N500 NSAU_DUMPMEM SPM8N500 Subsch. ID : 370 Det. descr. : DUMP MEMORY USING ABSOLUTE ADDRESSES | SCM01500 0 <hex> 13f04 <hex> a6 <hex> | |
| | ET=+ UT=+00.00.02 | DUMP_MEMORY_RAW DUMP_MEMORY Command Parameter(s) : MEMORYID_DUMPMEM SPM6N500 STARTADDR_DUMPMEM SPM7N500 NSAU_DUMPMEM SPM8N500 Subsch. ID : 370 Det. descr. : DUMP MEMORY USING ABSOLUTE ADDRESSES | SCM01500 0 <hex> 13fa9 <hex> a6 <hex> | |
| | ET=+ UT=+00.00.02 | DUMP_MEMORY_RAW DUMP_MEMORY Command Parameter(s) : MEMORYID_DUMPMEM SPM6N500 STARTADDR_DUMPMEM SPM7N500 NSAU_DUMPMEM SPM8N500 Subsch. ID : 370 Det. descr. : DUMP MEMORY USING ABSOLUTE ADDRESSES | SCM01500 0 <hex> 1404e <hex> a6 <hex> | |
| | ET=+ UT=+00.00.02 | DUMP_MEMORY_RAW DUMP_MEMORY Command Parameter(s) : MEMORYID_DUMPMEM SPM6N500 STARTADDR_DUMPMEM SPM7N500 NSAU_DUMPMEM SPM8N500 Subsch. ID : 370 Det. descr. : DUMP MEMORY USING ABSOLUTE ADDRESSES | SCM01500 0 <hex> 140f3 <hex> a6 <hex> | |

SpireEngSlowPMDump Dump and Check Memory (CRP)
 File: H_CRP_SPI_DUMP.xls
 Author: R. Biggins



| Step No. | Time | Activity/Remarks | TC/TLM | Display/ Branch |
|----------|----------------------|--|--|-----------------|
| | ET=+ UT=+00.00.02 | DUMP_MEMORY_RAW DUMP_MEMORY Command Parameter(s) : MEMORYID_DUMPMEM SPM6N500 STARTADDR_DUMPMEM SPM7N500 NSAU_DUMPMEM SPM8N500 Subsch. ID : 370 Det. descr. : DUMP MEMORY USING ABSOLUTE ADDRESSES | SCM01500 0 <hex> 14198 <hex> a6 <hex> | |
| | ET=+ UT=+00.00.02 | DUMP_MEMORY_RAW DUMP_MEMORY Command Parameter(s) : MEMORYID_DUMPMEM SPM6N500 STARTADDR_DUMPMEM SPM7N500 NSAU_DUMPMEM SPM8N500 Subsch. ID : 370 Det. descr. : DUMP MEMORY USING ABSOLUTE ADDRESSES | SCM01500 0 <hex> 1423d <hex> a6 <hex> | |
| | ET=+ UT=+00.00.02 | DUMP_MEMORY_RAW DUMP_MEMORY Command Parameter(s) : MEMORYID_DUMPMEM SPM6N500 STARTADDR_DUMPMEM SPM7N500 NSAU_DUMPMEM SPM8N500 Subsch. ID : 370 Det. descr. : DUMP MEMORY USING ABSOLUTE ADDRESSES | SCM01500 0 <hex> 142e2 <hex> a6 <hex> | |
| | ET=+ UT=+00.00.02 | DUMP_MEMORY_RAW DUMP_MEMORY Command Parameter(s) : MEMORYID_DUMPMEM SPM6N500 STARTADDR_DUMPMEM SPM7N500 NSAU_DUMPMEM SPM8N500 Subsch. ID : 370 Det. descr. : DUMP MEMORY USING ABSOLUTE ADDRESSES | SCM01500 0 <hex> 14387 <hex> a6 <hex> | |
| | ET=+ UT=+00.00.02 | DUMP_MEMORY_RAW DUMP_MEMORY Command Parameter(s) : MEMORYID_DUMPMEM SPM6N500 STARTADDR_DUMPMEM SPM7N500 NSAU_DUMPMEM SPM8N500 Subsch. ID : 370 Det. descr. : DUMP MEMORY USING ABSOLUTE ADDRESSES | SCM01500 0 <hex> 1442c <hex> a6 <hex> | |

SpireEngSlowPMDump Dump and Check Memory (CRP)
 File: H_CRP_SPI_DUMP.xls
 Author: R. Biggins



| Step No. | Time | Activity/Remarks | TC/TLM | Display/ Branch |
|----------|----------------------|---|--|-----------------|
| | ET=+ UT=+00.00.02 | DUMP_MEMORY_RAW DUMP_MEMORY Command Parameter(s) : MEMORYID_DUMPMEM SPM6N500 STARTADDR_DUMPMEM SPM7N500 NSAU_DUMPMEM SPM8N500 Subsch. ID : 370 Det. descr. : DUMP MEMORY USING ABSOLUTE ADDRESSES | SCM01500 0 <hex> 144d1 <hex> a6 <hex> | |
| | ET=+ UT=+00.00.02 | DUMP_MEMORY_RAW DUMP_MEMORY Command Parameter(s) : MEMORYID_DUMPMEM SPM6N500 STARTADDR_DUMPMEM SPM7N500 NSAU_DUMPMEM SPM8N500 Subsch. ID : 370 Det. descr. : DUMP MEMORY USING ABSOLUTE ADDRESSES | SCM01500 0 <hex> 14576 <hex> a6 <hex> | |
| | ET=+ UT=+00.00.02 | DUMP_MEMORY_RAW DUMP_MEMORY Command Parameter(s) : MEMORYID_DUMPMEM SPM6N500 STARTADDR_DUMPMEM SPM7N500 NSAU_DUMPMEM SPM8N500 Subsch. ID : 370 Det. descr. : DUMP MEMORY USING ABSOLUTE ADDRESSES | SCM01500 0 <hex> 1461b <hex> a6 <hex> | |
| | ET=+ UT=+00.00.02 | DUMP_MEMORY_RAW DUMP_MEMORY Command Parameter(s) : MEMORYID_DUMPMEM SPM6N500 STARTADDR_DUMPMEM SPM7N500 NSAU_DUMPMEM SPM8N500 Subsch. ID : 370 Det. descr. : DUMP MEMORY USING ABSOLUTE ADDRESSES | SCM01500 0 <hex> 146c0 <hex> a6 <hex> | |
| | ET=+ UT=+00.00.02 | DUMP_MEMORY_RAW DUMP_MEMORY Command Parameter(s) : MEMORYID_DUMPMEM SPM6N500 STARTADDR_DUMPMEM SPM7N500 NSAU_DUMPMEM SPM8N500 Subsch. ID : 370 Det. descr. : DUMP MEMORY USING ABSOLUTE ADDRESSES | SCM01500 0 <hex> 14765 <hex> a6 <hex> | |

SpireEngSlowPMDump Dump and Check Memory (CRP)
 File: H_CRP_SPI_DUMP.xls
 Author: R. Biggins



| Step No. | Time | Activity/Remarks | TC/TLM | Display/ Branch |
|----------|----------------------|---|--|-----------------|
| | ET=+ UT=+00.00.02 | DUMP_MEMORY_RAW DUMP_MEMORY Command Parameter(s) : MEMORYID_DUMPMEM SPM6N500 STARTADDR_DUMPMEM SPM7N500 NSAU_DUMPMEM SPM8N500 Subsch. ID : 370 Det. descr. : DUMP MEMORY USING ABSOLUTE ADDRESSES | SCM01500 0 <hex> 1480a <hex> a6 <hex> | |
| | ET=+ UT=+00.00.02 | DUMP_MEMORY_RAW DUMP_MEMORY Command Parameter(s) : MEMORYID_DUMPMEM SPM6N500 STARTADDR_DUMPMEM SPM7N500 NSAU_DUMPMEM SPM8N500 Subsch. ID : 370 Det. descr. : DUMP MEMORY USING ABSOLUTE ADDRESSES | SCM01500 0 <hex> 148af <hex> a6 <hex> | |
| | ET=+ UT=+00.00.02 | DUMP_MEMORY_RAW DUMP_MEMORY Command Parameter(s) : MEMORYID_DUMPMEM SPM6N500 STARTADDR_DUMPMEM SPM7N500 NSAU_DUMPMEM SPM8N500 Subsch. ID : 370 Det. descr. : DUMP MEMORY USING ABSOLUTE ADDRESSES | SCM01500 0 <hex> 14954 <hex> a6 <hex> | |
| | ET=+ UT=+00.00.02 | DUMP_MEMORY_RAW DUMP_MEMORY Command Parameter(s) : MEMORYID_DUMPMEM SPM6N500 STARTADDR_DUMPMEM SPM7N500 NSAU_DUMPMEM SPM8N500 Subsch. ID : 370 Det. descr. : DUMP MEMORY USING ABSOLUTE ADDRESSES | SCM01500 0 <hex> 149f9 <hex> a6 <hex> | |
| | ET=+ UT=+00.00.02 | DUMP_MEMORY_RAW DUMP_MEMORY Command Parameter(s) : MEMORYID_DUMPMEM SPM6N500 STARTADDR_DUMPMEM SPM7N500 NSAU_DUMPMEM SPM8N500 Subsch. ID : 370 Det. descr. : DUMP MEMORY USING ABSOLUTE ADDRESSES | SCM01500 0 <hex> 14a9e <hex> a6 <hex> | |

SpireEngSlowPMDump Dump and Check Memory (CRP)
 File: H_CRP_SPI_DUMP.xls
 Author: R. Biggins



| Step No. | Time | Activity/Remarks | TC/TLM | Display/ Branch |
|----------|----------------------|--|--|-----------------|
| | ET=+ UT=+00.00.02 | DUMP_MEMORY_RAW DUMP_MEMORY Command Parameter(s) : MEMORYID_DUMPMEM SPM6N500 STARTADDR_DUMPMEM SPM7N500 NSAU_DUMPMEM SPM8N500 Subsch. ID : 370 Det. descr. : DUMP MEMORY USING ABSOLUTE ADDRESSES | SCM01500 0 <hex> 14b43 <hex> a6 <hex> | |
| | ET=+ UT=+00.00.02 | DUMP_MEMORY_RAW DUMP_MEMORY Command Parameter(s) : MEMORYID_DUMPMEM SPM6N500 STARTADDR_DUMPMEM SPM7N500 NSAU_DUMPMEM SPM8N500 Subsch. ID : 370 Det. descr. : DUMP MEMORY USING ABSOLUTE ADDRESSES | SCM01500 0 <hex> 14be8 <hex> a6 <hex> | |
| | ET=+ UT=+00.00.02 | DUMP_MEMORY_RAW DUMP_MEMORY Command Parameter(s) : MEMORYID_DUMPMEM SPM6N500 STARTADDR_DUMPMEM SPM7N500 NSAU_DUMPMEM SPM8N500 Subsch. ID : 370 Det. descr. : DUMP MEMORY USING ABSOLUTE ADDRESSES | SCM01500 0 <hex> 14c8d <hex> a6 <hex> | |
| | ET=+ UT=+00.00.02 | DUMP_MEMORY_RAW DUMP_MEMORY Command Parameter(s) : MEMORYID_DUMPMEM SPM6N500 STARTADDR_DUMPMEM SPM7N500 NSAU_DUMPMEM SPM8N500 Subsch. ID : 370 Det. descr. : DUMP MEMORY USING ABSOLUTE ADDRESSES | SCM01500 0 <hex> 14d32 <hex> a6 <hex> | |
| | ET=+ UT=+00.00.02 | DUMP_MEMORY_RAW DUMP_MEMORY Command Parameter(s) : MEMORYID_DUMPMEM SPM6N500 STARTADDR_DUMPMEM SPM7N500 NSAU_DUMPMEM SPM8N500 Subsch. ID : 370 Det. descr. : DUMP MEMORY USING ABSOLUTE ADDRESSES | SCM01500 0 <hex> 14dd7 <hex> a6 <hex> | |

SpireEngSlowPMDump Dump and Check Memory (CRP)
 File: H_CRP_SPI_DUMP.xls
 Author: R. Biggins



| Step No. | Time | Activity/Remarks | TC/TLM | Display/ Branch |
|----------|----------------------|--|--|-----------------|
| | ET=+ UT=+00.00.02 | DUMP_MEMORY_RAW DUMP_MEMORY Command Parameter(s) : MEMORYID_DUMPMEM SPM6N500 STARTADDR_DUMPMEM SPM7N500 NSAU_DUMPMEM SPM8N500 Subsch. ID : 370 Det. descr. : DUMP MEMORY USING ABSOLUTE ADDRESSES | SCM01500 0 <hex> 14e7c <hex> a6 <hex> | |
| | ET=+ UT=+00.00.02 | DUMP_MEMORY_RAW DUMP_MEMORY Command Parameter(s) : MEMORYID_DUMPMEM SPM6N500 STARTADDR_DUMPMEM SPM7N500 NSAU_DUMPMEM SPM8N500 Subsch. ID : 370 Det. descr. : DUMP MEMORY USING ABSOLUTE ADDRESSES | SCM01500 0 <hex> 14f21 <hex> a6 <hex> | |
| | ET=+ UT=+00.00.02 | DUMP_MEMORY_RAW DUMP_MEMORY Command Parameter(s) : MEMORYID_DUMPMEM SPM6N500 STARTADDR_DUMPMEM SPM7N500 NSAU_DUMPMEM SPM8N500 Subsch. ID : 370 Det. descr. : DUMP MEMORY USING ABSOLUTE ADDRESSES | SCM01500 0 <hex> 14fc6 <hex> a6 <hex> | |
| | ET=+ UT=+00.00.02 | DUMP_MEMORY_RAW DUMP_MEMORY Command Parameter(s) : MEMORYID_DUMPMEM SPM6N500 STARTADDR_DUMPMEM SPM7N500 NSAU_DUMPMEM SPM8N500 Subsch. ID : 370 Det. descr. : DUMP MEMORY USING ABSOLUTE ADDRESSES | SCM01500 0 <hex> 1506b <hex> a6 <hex> | |
| | ET=+ UT=+00.00.02 | DUMP_MEMORY_RAW DUMP_MEMORY Command Parameter(s) : MEMORYID_DUMPMEM SPM6N500 STARTADDR_DUMPMEM SPM7N500 NSAU_DUMPMEM SPM8N500 Subsch. ID : 370 Det. descr. : DUMP MEMORY USING ABSOLUTE ADDRESSES | SCM01500 0 <hex> 15110 <hex> a6 <hex> | |

SpireEngSlowPMDump Dump and Check Memory (CRP)
 File: H_CRP_SPI_DUMP.xls
 Author: R. Biggins



| Step No. | Time | Activity/Remarks | TC/TLM | Display/ Branch |
|----------|----------------------|--|--|-----------------|
| | ET=+ UT=+00.00.02 | DUMP_MEMORY_RAW DUMP_MEMORY Command Parameter(s) : MEMORYID_DUMPMEM SPM6N500 STARTADDR_DUMPMEM SPM7N500 NSAU_DUMPMEM SPM8N500 Subsch. ID : 370 Det. descr. : DUMP MEMORY USING ABSOLUTE ADDRESSES | SCM01500 0 <hex> 151b5 <hex> a6 <hex> | |
| | ET=+ UT=+00.00.02 | DUMP_MEMORY_RAW DUMP_MEMORY Command Parameter(s) : MEMORYID_DUMPMEM SPM6N500 STARTADDR_DUMPMEM SPM7N500 NSAU_DUMPMEM SPM8N500 Subsch. ID : 370 Det. descr. : DUMP MEMORY USING ABSOLUTE ADDRESSES | SCM01500 0 <hex> 1525a <hex> a6 <hex> | |
| | ET=+ UT=+00.00.02 | DUMP_MEMORY_RAW DUMP_MEMORY Command Parameter(s) : MEMORYID_DUMPMEM SPM6N500 STARTADDR_DUMPMEM SPM7N500 NSAU_DUMPMEM SPM8N500 Subsch. ID : 370 Det. descr. : DUMP MEMORY USING ABSOLUTE ADDRESSES | SCM01500 0 <hex> 152ff <hex> a6 <hex> | |
| | ET=+ UT=+00.00.02 | DUMP_MEMORY_RAW DUMP_MEMORY Command Parameter(s) : MEMORYID_DUMPMEM SPM6N500 STARTADDR_DUMPMEM SPM7N500 NSAU_DUMPMEM SPM8N500 Subsch. ID : 370 Det. descr. : DUMP MEMORY USING ABSOLUTE ADDRESSES | SCM01500 0 <hex> 153a4 <hex> a6 <hex> | |
| | ET=+ UT=+00.00.02 | DUMP_MEMORY_RAW DUMP_MEMORY Command Parameter(s) : MEMORYID_DUMPMEM SPM6N500 STARTADDR_DUMPMEM SPM7N500 NSAU_DUMPMEM SPM8N500 Subsch. ID : 370 Det. descr. : DUMP MEMORY USING ABSOLUTE ADDRESSES | SCM01500 0 <hex> 15449 <hex> a6 <hex> | |

SpireEngSlowPMDump Dump and Check Memory (CRP)
 File: H_CRP_SPI_DUMP.xls
 Author: R. Biggins



| Step No. | Time | Activity/Remarks | TC/TLM | Display/ Branch |
|----------|----------------------|--|--|-----------------|
| | ET=+ UT=+00.00.02 | DUMP_MEMORY_RAW DUMP_MEMORY Command Parameter(s) : MEMORYID_DUMPMEM SPM6N500 STARTADDR_DUMPMEM SPM7N500 NSAU_DUMPMEM SPM8N500 Subsch. ID : 370 Det. descr. : DUMP MEMORY USING ABSOLUTE ADDRESSES | SCM01500 0 <hex> 154ee <hex> a6 <hex> | |
| | ET=+ UT=+00.00.02 | DUMP_MEMORY_RAW DUMP_MEMORY Command Parameter(s) : MEMORYID_DUMPMEM SPM6N500 STARTADDR_DUMPMEM SPM7N500 NSAU_DUMPMEM SPM8N500 Subsch. ID : 370 Det. descr. : DUMP MEMORY USING ABSOLUTE ADDRESSES | SCM01500 0 <hex> 15593 <hex> a6 <hex> | |
| | ET=+ UT=+00.00.02 | DUMP_MEMORY_RAW DUMP_MEMORY Command Parameter(s) : MEMORYID_DUMPMEM SPM6N500 STARTADDR_DUMPMEM SPM7N500 NSAU_DUMPMEM SPM8N500 Subsch. ID : 370 Det. descr. : DUMP MEMORY USING ABSOLUTE ADDRESSES | SCM01500 0 <hex> 15638 <hex> a6 <hex> | |
| | ET=+ UT=+00.00.02 | DUMP_MEMORY_RAW DUMP_MEMORY Command Parameter(s) : MEMORYID_DUMPMEM SPM6N500 STARTADDR_DUMPMEM SPM7N500 NSAU_DUMPMEM SPM8N500 Subsch. ID : 370 Det. descr. : DUMP MEMORY USING ABSOLUTE ADDRESSES | SCM01500 0 <hex> 156dd <hex> a6 <hex> | |
| | ET=+ UT=+00.00.02 | DUMP_MEMORY_RAW DUMP_MEMORY Command Parameter(s) : MEMORYID_DUMPMEM SPM6N500 STARTADDR_DUMPMEM SPM7N500 NSAU_DUMPMEM SPM8N500 Subsch. ID : 370 Det. descr. : DUMP MEMORY USING ABSOLUTE ADDRESSES | SCM01500 0 <hex> 15782 <hex> a6 <hex> | |

SpireEngSlowPMDump Dump and Check Memory (CRP)
 File: H_CRP_SPI_DUMP.xls
 Author: R. Biggins



| Step No. | Time | Activity/Remarks | TC/TLM | Display/ Branch |
|----------|----------------------|--|--|-----------------|
| | ET=+ UT=+00.00.02 | DUMP_MEMORY_RAW DUMP_MEMORY Command Parameter(s) : MEMORYID_DUMPMEM SPM6N500 STARTADDR_DUMPMEM SPM7N500 NSAU_DUMPMEM SPM8N500 Subsch. ID : 370 Det. descr. : DUMP MEMORY USING ABSOLUTE ADDRESSES | SCM01500 0 <hex> 15827 <hex> a6 <hex> | |
| | ET=+ UT=+00.00.02 | DUMP_MEMORY_RAW DUMP_MEMORY Command Parameter(s) : MEMORYID_DUMPMEM SPM6N500 STARTADDR_DUMPMEM SPM7N500 NSAU_DUMPMEM SPM8N500 Subsch. ID : 370 Det. descr. : DUMP MEMORY USING ABSOLUTE ADDRESSES | SCM01500 0 <hex> 158cc <hex> a6 <hex> | |
| | ET=+ UT=+00.00.02 | DUMP_MEMORY_RAW DUMP_MEMORY Command Parameter(s) : MEMORYID_DUMPMEM SPM6N500 STARTADDR_DUMPMEM SPM7N500 NSAU_DUMPMEM SPM8N500 Subsch. ID : 370 Det. descr. : DUMP MEMORY USING ABSOLUTE ADDRESSES | SCM01500 0 <hex> 15971 <hex> a6 <hex> | |
| | ET=+ UT=+00.00.02 | DUMP_MEMORY_RAW DUMP_MEMORY Command Parameter(s) : MEMORYID_DUMPMEM SPM6N500 STARTADDR_DUMPMEM SPM7N500 NSAU_DUMPMEM SPM8N500 Subsch. ID : 370 Det. descr. : DUMP MEMORY USING ABSOLUTE ADDRESSES | SCM01500 0 <hex> 15a16 <hex> a6 <hex> | |
| | ET=+ UT=+00.00.02 | DUMP_MEMORY_RAW DUMP_MEMORY Command Parameter(s) : MEMORYID_DUMPMEM SPM6N500 STARTADDR_DUMPMEM SPM7N500 NSAU_DUMPMEM SPM8N500 Subsch. ID : 370 Det. descr. : DUMP MEMORY USING ABSOLUTE ADDRESSES | SCM01500 0 <hex> 15abb <hex> a6 <hex> | |

SpireEngSlowPMDump Dump and Check Memory (CRP)
 File: H_CRP_SPI_DUMP.xls
 Author: R. Biggins



| Step No. | Time | Activity/Remarks | TC/TLM | Display/ Branch |
|----------|----------------------|---|--|-----------------|
| | ET=+ UT=+00.00.02 | DUMP_MEMORY_RAW DUMP_MEMORY Command Parameter(s) : MEMORYID_DUMPMEM SPM6N500 STARTADDR_DUMPMEM SPM7N500 NSAU_DUMPMEM SPM8N500 Subsch. ID : 370 Det. descr. : DUMP MEMORY USING ABSOLUTE ADDRESSES | SCM01500 0 <hex> 15b60 <hex> a6 <hex> | |
| | ET=+ UT=+00.00.02 | DUMP_MEMORY_RAW DUMP_MEMORY Command Parameter(s) : MEMORYID_DUMPMEM SPM6N500 STARTADDR_DUMPMEM SPM7N500 NSAU_DUMPMEM SPM8N500 Subsch. ID : 370 Det. descr. : DUMP MEMORY USING ABSOLUTE ADDRESSES | SCM01500 0 <hex> 15c05 <hex> a6 <hex> | |
| | ET=+ UT=+00.00.02 | DUMP_MEMORY_RAW DUMP_MEMORY Command Parameter(s) : MEMORYID_DUMPMEM SPM6N500 STARTADDR_DUMPMEM SPM7N500 NSAU_DUMPMEM SPM8N500 Subsch. ID : 370 Det. descr. : DUMP MEMORY USING ABSOLUTE ADDRESSES | SCM01500 0 <hex> 15caa <hex> a6 <hex> | |
| | ET=+ UT=+00.00.02 | DUMP_MEMORY_RAW DUMP_MEMORY Command Parameter(s) : MEMORYID_DUMPMEM SPM6N500 STARTADDR_DUMPMEM SPM7N500 NSAU_DUMPMEM SPM8N500 Subsch. ID : 370 Det. descr. : DUMP MEMORY USING ABSOLUTE ADDRESSES | SCM01500 0 <hex> 15d4f <hex> a6 <hex> | |
| | ET=+ UT=+00.00.02 | DUMP_MEMORY_RAW DUMP_MEMORY Command Parameter(s) : MEMORYID_DUMPMEM SPM6N500 STARTADDR_DUMPMEM SPM7N500 NSAU_DUMPMEM SPM8N500 Subsch. ID : 370 Det. descr. : DUMP MEMORY USING ABSOLUTE ADDRESSES | SCM01500 0 <hex> 15df4 <hex> a6 <hex> | |

SpireEngSlowPMDump Dump and Check Memory (CRP)
 File: H_CRP_SPI_DUMP.xls
 Author: R. Biggins



| Step No. | Time | Activity/Remarks | TC/TLM | Display/ Branch |
|----------|----------------------|--|---|-----------------|
| | ET=+ UT=+00.00.02 | DUMP_MEMORY_RAW DUMP_MEMORY Command Parameter(s) : MEMORYID_DUMPMEM SPM6N500 STARTADDR_DUMPMEM SPM7N500 NSAU_DUMPMEM SPM8N500 Subsch. ID : 370 Det. descr. : DUMP MEMORY USING ABSOLUTE ADDRESSES | SCM01500 0 <hex> 15e99 <hex> a6 <hex> | |
| | ET=+ UT=+00.00.02 | DUMP_MEMORY_RAW DUMP_MEMORY Command Parameter(s) : MEMORYID_DUMPMEM SPM6N500 STARTADDR_DUMPMEM SPM7N500 NSAU_DUMPMEM SPM8N500 Subsch. ID : 370 Det. descr. : DUMP MEMORY USING ABSOLUTE ADDRESSES | SCM01500 0 <hex> 15f3e <hex> a6 <hex> | |
| | ET=+ UT=+00.00.02 | DUMP_MEMORY_RAW DUMP_MEMORY Command Parameter(s) : MEMORYID_DUMPMEM SPM6N500 STARTADDR_DUMPMEM SPM7N500 NSAU_DUMPMEM SPM8N500 Subsch. ID : 370 Det. descr. : DUMP MEMORY USING ABSOLUTE ADDRESSES | SCM01500 0 <hex> 15fe3 <hex> 76 <hex> | |
| | ET=+ UT=+00.00.02 | CHECK_MEMORY_RAW CHECK_MEMORY Command Parameter(s) : MEMORYID_CHECKMEM SPM9N500 STARTADDR_CHECKMEM SPMAN500 NSAU_CHECKMEM SPMBN500 Subsch. ID : 370 Det. descr. : CHECK MEMORY USING ABSOLUTE ADDRESSES | SCM02500 0 <hex> 4000 <hex> 174b <hex> | |
| | ET=+ UT=+00.00.05 | CHECK_MEMORY_RAW CHECK_MEMORY Command Parameter(s) : MEMORYID_CHECKMEM SPM9N500 STARTADDR_CHECKMEM SPMAN500 NSAU_CHECKMEM SPMBN500 Subsch. ID : 370 Det. descr. : CHECK MEMORY USING ABSOLUTE ADDRESSES | SCM02500 0 <hex> 6000 <hex> ffff <hex> | |

SpireEngSlowPMDump Dump and Check Memory (CRP)
 File: H_CRP_SPI_DUMP.xls
 Author: R. Biggins



| Step No. | Time | Activity/Remarks | TC/TLM | Display/ Branch |
|----------|----------------------|---|--|-------------------|
| | ET=+ UT=+00.00.05 | CHECK_MEMORY_RAW CHECK_MEMORY Command Parameter(s) : MEMORYID_CHECKMEM SPM9N500 STARTADDR_CHECKMEM SPMAN500 NSAU_CHECKMEM SPMBN500 Subsch. ID : 370 Det. descr. : CHECK MEMORY USING ABSOLUTE ADDRESSES | SCM02500 0 <hex> 15fff <hex> 59 <hex> | |
| 5 | | Set default end conditions | | Next Step: END |
| | | Note that a TM(5,1) packet [New_Step_Report] is generated after each of the following SET_OBS_STEP telecommands | | |
| | ET=+ UT=+00.00.01 | SET_OBS_STEP SET_OBS_STEP Command Parameter(s) : OBSERVATION_STEP SP03N500 TC Control Flags : GBM IL DSE --Y -- --- Subsch. ID : 370 Det. descr. : SET OBSERVATION STEP | SC003500 0 <hex> | |
| | ET=+ UT=+00.00.01 | SET_BBID SET_BBID Command Parameter(s) : BUILDING_BLOCK_ID SP01N500 Subsch. ID : 370 Det. descr. : SET BUILDING BLOCK IDENTIFIER | SC001500 80030001 <hex> | |
| | | Verify Telemetry BBFULLTYPE SM2LN500 | = SpireBbEndObs | AND=ZAZ90999 |
| | ET=+ UT=+00.00.01 | SET_OBS_STEP SET_OBS_STEP Command Parameter(s) : OBSERVATION_STEP SP03N500 TC Control Flags : GBM IL DSE --Y -- --- Subsch. ID : 370 Det. descr. : SET OBSERVATION STEP | SC003500 1 <hex> | |

SpireEngSlowPMDump Dump and Check Memory (CRP)
 File: H_CRP_SPI_DUMP.xls
 Author: R. Biggins



| Step No. | Time | Activity/Remarks | TC/TLM | Display/ Branch |
|-------------------------|----------------------|--|--|-----------------|
| | ET=+ UT=+00.00.01 | SET_OBSID Command Parameter(s) : OBSERVATION_ID Subsch. ID : 370 Det. descr. : SET OBSERVATION IDENTIFIER | SET_OBSID SC000500 SP00N500 00000000 <hex> | |
| | | Verify Telemetry OBSID SM10N500 | = 00000000 <hex> | AND=ZAZ90999 |
| | ET=+ UT=+00.00.01 | SET_OBS_STEP Command Parameter(s) : OBSERVATION_STEP TC Control Flags : Subsch. ID : 370 Det. descr. : SET OBSERVATION STEP | SET_OBS_STEP SC003500 SP03N500 0 <hex> GBM IL DSE --Y -- -- | |
| | ET=+ UT=+00.00.01 | SET_BBID Command Parameter(s) : BUILDING_BLOCK_ID Subsch. ID : 370 Det. descr. : SET BUILDING BLOCK IDENTIFIER | SET_BBID SC001500 SP01N500 80000000 <hex> | |
| | ET=+ UT=+00.00.01 | SET_OBSID_RAW Command Parameter(s) : OBSERVATION_ID Subsch. ID : 370 Det. descr. : SET OBSERVATION IDENTIFIER | SET_OBSID SC000500 SP00N500 50000000 <hex> | |
| End of Procedure | | | | |