

Transition to SAFE mode
 File: H_CRP_PAC_CSSF.xls
 Author: R. Biggins



Procedure Summary

Objectives

The objective of this procedure is to transition from any observing mode to SAFE mode

Summary of Constraints

n/a

Spacecraft Configuration

Start of Procedure

PACS is in SAFE, PHOTOMETRY or SPECTROSCOPY mode

End of Procedure

PACS is in SAFE mode

Reference File(s)

Input Command Sequences

Output Command Sequences

HRPCSSF

Referenced Displays

ANDs	GRDs	SLDs
PA000380		
ZAZ97999		

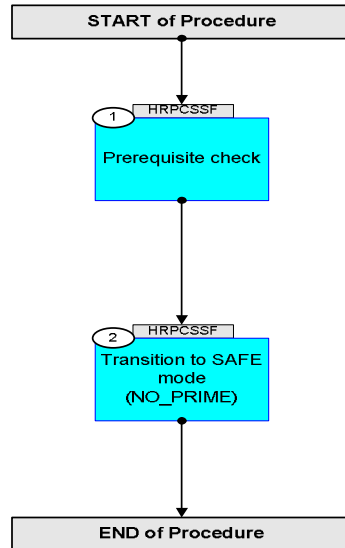
Configuration Control Information

DATE	FOP ISSUE	VERSION	MODIFICATION DESCRIPTION	AUTHOR	SPR REF
03/12/2007		1	Created	R. Biggins	
18/01/2008		2	Update due to initial testing against the simulator: - TC updated due to new DB	R. Biggins	
27/05/2008	1	3	Updates due to SVT-1 testing: - Comment added - TC Flag updated	R. Biggins	
19/11/2010	3.1	4	TM check updated	R. Biggins	

Transition to SAFE mode
File: H_CRP_PAC_CSSF.xls
Author: R. Biggins



Procedure Flowchart Overview



Transition to SAFE mode
 File: H_CRP_PAC_CSSF.xls
 Author: R. Biggins



Step No.	Time	Activity/Remarks	TC/TLM	Display/ Branch
Beginning of Procedure				
TC Seq. Name : HRPCSSF (Transition to SAFE)				
TimeTag Type: N Sub Schedule ID: □				
1		Prerequisite check		Next Step: 2
		Verify PACS Mode DP_TM_RATE PM049380	= NO PRIME = PHOT = SPEC	AND=PA000380
2		Transition to SAFE mode (NO_PRIME)		Next Step: END
		Sending this TC will generate a TM(5,1) [EVENT_REPORT_5_28 - Unexp 1355 ACK] packet.		
		Execute Telecommand DPU_START_OBCP	PC012380	
		Command Parameter(s) : PROCEDURE_ID PP012380 NUMBER_OF_TIMES PP010380	GO_SAFE_MODE 0 <dec>	
		Subsch. ID : 90 Det. descr. : START AN OBCP WITH THE COMMANDED PARAMETERS		
		Verify PACS Mode DP_TM_RATE PM049380	= NO PRIME	AND=ZAZ97999
End of Procedure				