

HifiManCmdCopyToPMLow
 File: H_CRP_HIF_PLOW.xls
 Author: R. Biggins



Procedure Summary

Objectives

The objective of this procedure is to copy the OBSW located in the PM-high area to PM-low area of the ICU

Based on procedure:
 HifiManCmdCopyToPMLow (v1)

Summary of Constraints

Valid for HIFI OBSW version 6.4.1 only

Spacecraft Configuration

Start of Procedure

End of Procedure

Reference File(s)

Input Command Sequences

Output Command Sequences
 HRHPLOW

Referenced Displays

ANDs GRDs SLDs
 ZAZ9C999

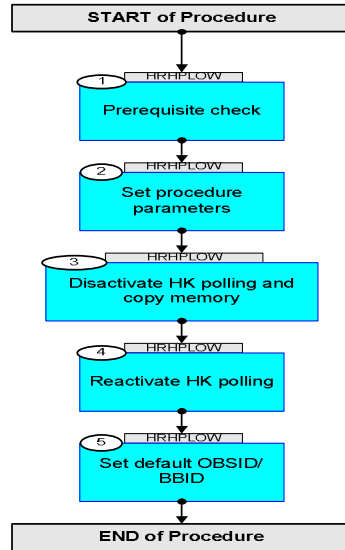
Configuration Control Information

DATE	FOP ISSUE	VERSION	MODIFICATION DESCRIPTION	AUTHOR	SPR REF
24/08/2010	3.1	1	Created	R. Biggins	

HifiManCmdCopyToPMLow
File: H_CRP_HIF_PLOW.xls
Author: R. Biggins



Procedure Flowchart Overview



HifiManCmdCopyToPMLow
 File: H_CRP_HIF_PLOW.xls
 Author: R. Biggins



Step No.	Time	Activity/Remarks	TC/TLM	Display/ Branch
Beginning of Procedure				
<p><i>TC Seq. Name :HRHPLOW (PM-high to PM-low)</i></p> <p><i>TimeTag Type: Y</i> <i>Sub Schedule ID:</i></p> <p style="text-align: center;">□</p>				
1		<i>Prerequisite check</i>		Next Step: 2
1.1		<i>HSC/ICC input</i>		□
		<p>Verify that the HSC/ICC has supplied a valid OBSID value:</p> <p>OBS_ID = 0xnnnn nnnn</p>		
2		<i>Set procedure parameters</i>		Next Step: 3
	ET=+ UT=+00.00.00	<p>HIFI_Set_OBS_ID</p> <p style="text-align: right;">HIFI_Set_OBS_ID</p> <p><i>Command Parameter(s) :</i></p> <p style="text-align: right;">HIFI_BB_ID HP001197 HIFI_OBS_ID HP000197</p> <p><i>TC Control Flags :</i></p> <p style="text-align: right;">GBM IL DSE --Y -- ---</p> <p><i>Subsch. ID : 70</i> <i>Det. descr. : Set Observation-ID and Building-Block-ID</i></p>	HC014289	
		<p>Verify Telemetry</p> <p style="text-align: right;">BB_ID_per_hk HM004190</p>	= 1EF20001 <hex>	AND=ZAZ9C999
		<p>Verify Telemetry</p> <p style="text-align: right;">OBS_ID_per_hk HM003190</p>	OBS_ID	AND=ZAZ9C999
3		<i>Disactivate HK polling and copy memory</i>		Next Step: 4

HifiManCmdCopyToPMLow
 File: H_CRP_HIF_PLOW.xls
 Author: R. Biggins



Step No.	Time	Activity/Remarks	TC/TLM	Display/ Branch
5		Set default OBSID/BBID		Next Step: END
	ET=+ UT=+00.00.01	HIFI_Set_OBS_ID HIFI_Set_OBS_ID Command Parameter(s) : HIFI_BB_ID HP001197 HIFI_OBS_ID HP000197 TC Control Flags : GBM IL DSE --Y -- -- Subsch. ID : 70 Det. descr. : Set Observation-ID and Building-Block-ID	HC014289 0 <hex> (Def) 0 <hex> (Def)	
		Verify Telemetry BB_ID_per_hk HM004190	= 0 <hex>	AND=ZAZ9C999
		Verify Telemetry OBS_ID_per_hk HM003190	= 0 <hex>	AND=ZAZ9C999
End of Procedure				