

Start/Stop PCDU Management function
 File: H_CRP_EPS_MANG.xls
 Author: E. Picallo



Procedure Summary

Objectives

This procedure describes the steps needed to switch ON or OFF the ASW function "PCDU Management".

Summary of Constraints

Default status of the function: "Running".

When the function is stopped, it does not accept any other telecommands than the:

- Start Function TC(8,1,112);
- Report Function Status TC(8,5,112).

This can cause that the UIU be out of synch with the actual ON/OFF status of the PCDU units eg. in case Ground use Service 2 telecommands to switch PCDU units.

Spacecraft Configuration

Start of Procedure

CDMU in default configuration, that is:

- PM A or B ON (nominally A)
- TM Encoder/OBT A or B active (nominally A)
- RM A and B enabled
- MM A and B ON

End of Procedure

CDMU in default configuration, that is:

- PM A or B ON (nominally A)
- TM Encoder/OBT A or B active (nominally A)
- RM A and B enabled
- MM A and B ON

Reference File(s)

Input Command Sequences

Output Command Sequences

HRWMANG1
 HRWMANG2

Referenced Displays

ANDs GRDs SLDs
 ZAZ28999

Configuration Control Information

DATE	FOP ISSUE	VERSION	MODIFICATION DESCRIPTION	AUTHOR	SPR REF
23/07/08	1	1	Created	E. Picallo	

Start/Stop PCDU Management function
 File: H_CRP_EPS_MANG.xls
 Author: E. Picallo

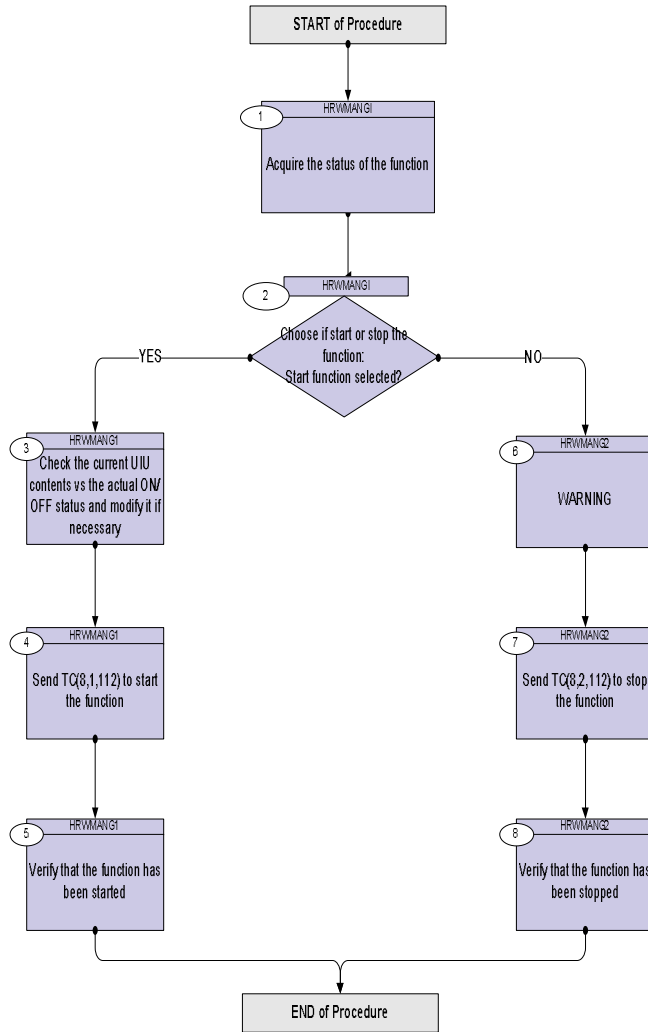


15/12/08	2	2	Call to H_CRP_DHS_3017 UIU table maintenance added <input type="checkbox"/> Call to H_FCP_EPS_REPO deleted <input type="checkbox"/> Comment about multiple 1553 TCs deleted	E. Picallo	
----------	---	---	---	------------	--

Start/Stop PCDU Management function
 File: H_CRP_EPS_MANG.xls
 Author: E. Picallo



Procedure Flowchart Overview



Start/Stop PCDU Management function
 File: H_CRP_EPS_MANG.xls
 Author: E. Picallo



Step No.	Time	Activity/Remarks	TC/TLM	Display/ Branch
Beginning of Procedure				
TC Seq. Name : HRWMANG1 (Start/Stop PCDU Mgmt) Start/Stop PCDU Management function TimeTag Type: N Sub Schedule ID: <input type="checkbox"/>				
1		Acquire the status of the function		Next Step: 2
		Verify Telemetry <div style="text-align: center;">PcdusTs DEH45170</div>		AND=ZAZ28999
2		Choose if start or stop the function: Start function selected?		Next Step: YES 3 NO 6
		Warning: If the function is running sending the TC "Start PCDU Management" will cause a TC Acceptance failure TM(1,2) "Function Already Started".		
		Warning: If the function is Stopped sending the TC "Stop PCDU Management" will cause a TC Acceptance failure TM(1,2) "Function Already Stopped".		
TC Seq. Name : HRWMANG1 (Start PCDU Mgmt) TimeTag Type: Sub Schedule ID: <input type="checkbox"/>				
3		Check the current UIU contents vs the actual ON/OFF status and modify it if necessary		Next Step: 4
		In case some PCDU units were switched ON/OFF by the Ground, while the PCDU management function was Stopped, using the only possible means of Service 2 telecommands, the status of the UIU might be out of synch and needs to be updated accordingly if not yet done before starting the function again. Note any switching ON/OFF by the CDMU ASW eg for reconfiguration purposes are correctly reflected in the UIU table even when the PCDU Management function is Stopped.		

Start/Stop PCDU Management function
 File: H_CRP_EPS_MANG.xls
 Author: E. Picallo



Step No.	Time	Activity/Remarks	TC/TLM	Display/ Branch
		Execute Procedure: H_CRP_DHS_3017 Unit in Use table maintenance		
4		Send TC(8,1,112) to start the function		Next Step: 5
		Start PCDU Management telecommand is used for switching on the function.		
		Execute Telecommand Start_PCDU_Management TC Control Flags : Subsch. ID : 10 Det. descr. : Start PCDU Management TC(8,1,112)	DC01A170	
5		Verify that the function has been started		Next Step: END
		Verify Telemetry PcdUSts DEH45170	= Running	AND=ZAZ28999
TC Seq. Name :HRWMANG2 (Stop PCDU Mgmt)				
TimeTag Type: Sub Schedule ID: <input type="checkbox"/>				
6		WARNING		Next Step: 7
		Stopping the PCDU Management function results in the rejection of any subsequent PCDU Management related TCs other than 'Start' or 'Report Status'. This means that in order to switch PCDU units ON/OFF the Ground needs to use Service 2 telecommands, though this can disturb the autonomous operations of the ASW, the UIU not being updated autonomously onboard. Currently there is no way to tell ASW that the status of a PCDU unit has been changed by a Service 2 telecommand. Therefore it is strongly discouraged to use Service 2 telecommands to control the PCDU units.		
7		Send TC(8,2,112) to stop the function		Next Step: 8

Start/Stop PCDU Management function
 File: H_CRP_EPS_MANG.xls
 Author: E. Picallo



Step No.	Time	Activity/Remarks	TC/TLM	Display/ Branch
		<p>Stop PCDU Management telecommand is used for switching off the function.</p> <p><i>When the function is stopped, it does not accept any other telecommands than the Start Function and Report Function Status TCs.</i></p>		
		<p>Execute Telecommand</p> <p style="text-align: center;">Stop_PCDU_Management</p> <p>TC Control Flags :</p> <p style="text-align: right;">GBM IL DSE --Y -- ---</p> <p>Subsch. ID : 10 Det. descr. : Stop PCDU Management TC(8,2,112)</p>	DC02A170	
8		Verify that the function has been stopped		Next Step: END
		<p>Verify Telemetry</p> <p style="text-align: center;">Pcdusts DEH45170</p>	= Stopped	AND=ZAZ28999
End of Procedure				