

Loading of the EAT entries related to OBCPs  
 File: H\_CRP\_DHS\_XEAT.xls  
 Author: S. Manganelli



## Procedure Summary

### Objectives

This procedure is used to load the EAT entries related to the OBCPs.  
 It shall be called by the recovery procedure after a transition to Survival mode.

### Summary of Constraints

0

### Spacecraft Configuration

#### Start of Procedure

Any

#### End of Procedure

OBCP related EAT entries loaded and enabled

### Reference File(s)

#### Input Command Sequences

#### Output Command Sequences

HRDXEAT

### Referenced Displays

ANDs GRDs SLDs

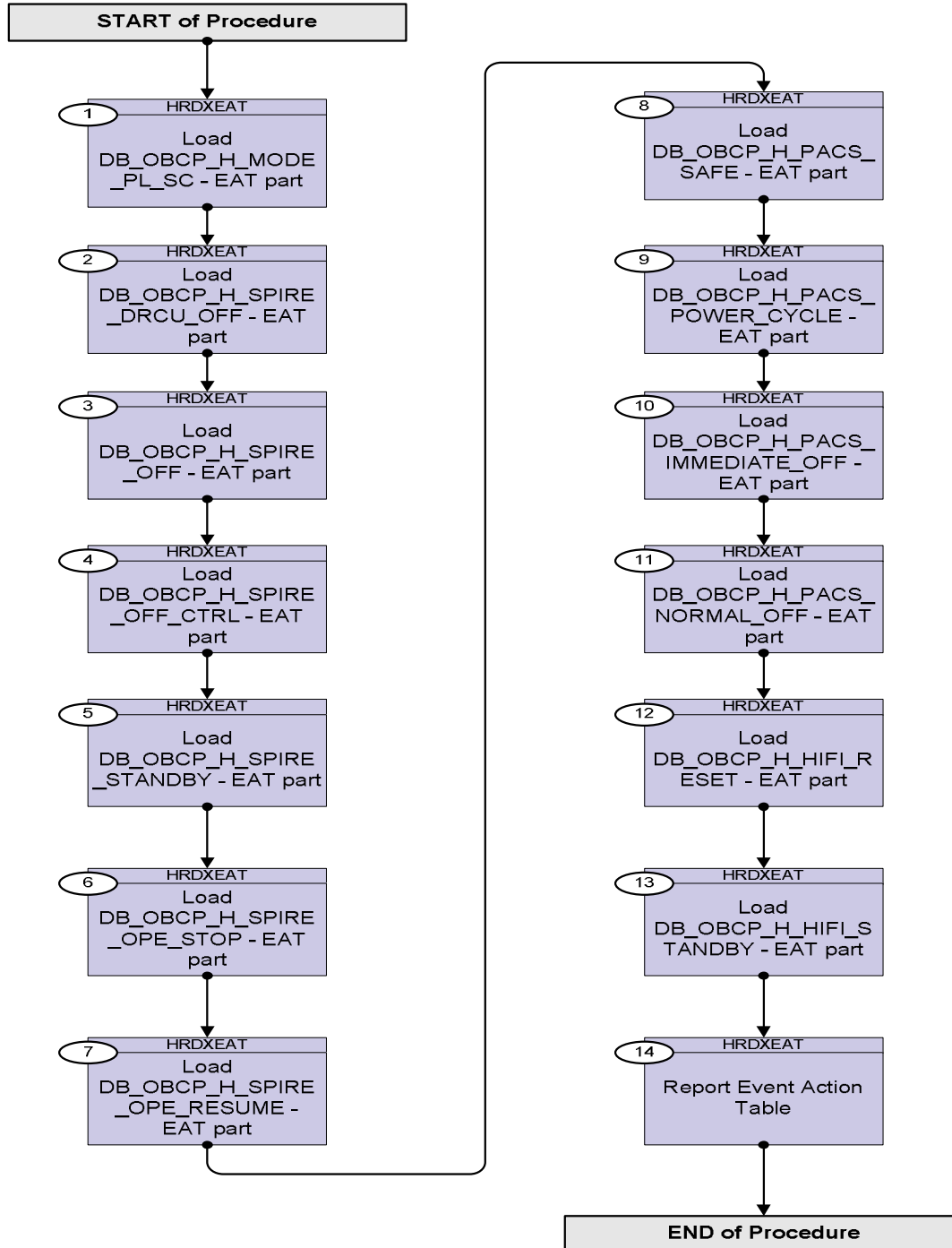
### Configuration Control Information

DATE	FOP ISSUE	VERSION	MODIFICATION DESCRIPTION	AUTHOR	SPR REF
10/11/08	2	1	Created	cmevi-hp	
19/03/09	2.2	2	Updated TCs due to OBSW 3_8_2 DB changes	S. Manganelli	
05/05/09	2.4	3	DB check against OBSW 3_10	S. Manganelli	

Loading of the EAT entries related to OBCPs  
 File: H\_CRP\_DHS\_XEAT.xls  
 Author: S. Manganelli



### Procedure Flowchart Overview



Loading of the EAT entries related to OBCPs  
 File: H\_CRP\_DHS\_XEAT.xls  
 Author: S. Manganelli



Step No.	Time	Activity/Remarks	TC/TLM	Display/ Branch
<b>Beginning of Procedure</b>				
<p><i>TC Seq. Name :HRDXEAT (Load OBCP EAT entrie)</i></p> <p><i>TimeTag Type: N</i>  <i>Sub Schedule ID:</i></p> <p style="text-align: center;">□</p>				
1		Load DB_OBCP_H_MODE_PL_SC - EAT part		Next Step: 2
		No need to fill the EAT for this OBCP. This is hard-coded on the OBSM. This OBCP is called during mode transition.		
2		Load DB_OBCP_H_SPIRE_DRCU_OFF - EAT part		Next Step: 3
		This OBCP is triggered by DRCU Power anomaly or Temperature anomaly (5,2,0xC000) from SPIRE NOMINAL		
		Execute Telecommand <p style="text-align: right;"><b>EAT_SPIRE_DCRU_N</b></p> Command Parameter(s) : 32-bit value                   DPV32185      0 <hex> (Def) 32-bit value                   DPV32185      0 <hex> (Def)	DC2A0185	
		TC Control Flags : <p style="text-align: right;">GBM IL DSE --Y -- ---</p> Subsch. ID : 10 Det. descr. : EAT start SPIRE_DCRU_OFF OBCP TC(19,1) from Nominal		
		Execute Telecommand <p style="text-align: right;"><b>EAT_SPIRE_DRCU_N_Enable</b></p> TC Control Flags : <p style="text-align: right;">GBM IL DSE --Y -- ---</p> Subsch. ID : 10 Det. descr. : EAT Enable Action related to SPIRE_DRCU_OFF_OBCP TC(19,4)	DC2A1185	
		Execute Telecommand <p style="text-align: right;"><b>EAT_SPIRE_DRCU_N_PPS</b></p> TC Control Flags : <p style="text-align: right;">GBM IL DSE --Y -- ---</p> Subsch. ID : 10 Det. descr. : EAT Disable Parameter Passing TC(8,4,108,2)	DC2A2185	

Loading of the EAT entries related to OBCPs  
 File: H\_CRP\_DHS\_XEAT.xls  
 Author: S. Manganelli



Step No.	Time	Activity/Remarks	TC/TLM	Display/ Branch
		Execute Telecommand <p style="text-align: right;"><b>EAT_SPIRE_DRCU_N_AHI</b></p> TC Control Flags : <p style="text-align: right;">GBM IL DSE --Y -- ---</p> Subsch. ID : 10 Det. descr. : EAT Action Handling ID TC(8,4,108,3)	DC2A3185	
		<b>This OBCP is triggered by DRCU Power anomaly or Temperature anomaly (5,2,0xC000) from SPIRE REDUNDANT</b>		
		Execute Telecommand <p style="text-align: right;"><b>EAT_SPIRE_DCRU_R</b></p> Command Parameter(s) : 32-bit value           DPV32185 32-bit value           DPV32185 TC Control Flags : <p style="text-align: right;">GBM IL DSE --Y -- ---</p> Subsch. ID : 10 Det. descr. : EAT start SPIRE_DCRU_OFF OBCP TC(19,1) from Redundant	DC2A4185  0 <hex> (Def) 0 <hex> (Def)	
		Execute Telecommand <p style="text-align: right;"><b>EAT_SPIRE_DRCU_R_Enable</b></p> TC Control Flags : <p style="text-align: right;">GBM IL DSE --Y -- ---</p> Subsch. ID : 10 Det. descr. : EAT Enable Action related to SPIRE_DRCU_OFF_OBCP TC(19,4)	DC2A5185	
		Execute Telecommand <p style="text-align: right;"><b>EAT_SPIRE_DRCU_R_PPS</b></p> TC Control Flags : <p style="text-align: right;">GBM IL DSE --Y -- ---</p> Subsch. ID : 10 Det. descr. : EAT Disable Parameter Passing TC(8,4,108,2)	DC2A6185	
		Execute Telecommand <p style="text-align: right;"><b>EAT_SPIRE_DRCU_R_AHI</b></p> TC Control Flags : <p style="text-align: right;">GBM IL DSE --Y -- ---</p> Subsch. ID : 10 Det. descr. : EAT Action Handling ID TC(8,4,108,3)	DC2A7185	
3		Load DB_OBCP_H_SPIRE_OFF - EAT part		Next Step: 4

Loading of the EAT entries related to OBCPs  
 File: H\_CRP\_DHS\_XEAT.xls  
 Author: S. Manganelli



Step No.	Time	Activity/Remarks	TC/TLM	Display/ Branch
		This OBCP is triggered by DPU Power anomaly (5,2,0xC010) from SPIRE NOMINAL		
		Execute Telecommand <p style="text-align: right;">EAT_SPIRE_OFF_N</p> Command Parameter(s) : 32-bit value           DPV32185    0 <hex> (Def) 32-bit value           DPV32185    0 <hex> (Def)  TC Control Flags : <p style="text-align: right;">GBM IL DSE            --Y -- ---</p> Subsch. ID : 10 Det. descr. : EAT start SPIRE_OFF OBCP TC(19,1) from Nominal	DC3A0185	
		Execute Telecommand <p style="text-align: right;">EAT_SPIRE_OFF_N_ENABLE</p> TC Control Flags : <p style="text-align: right;">GBM IL DSE            --Y -- ---</p> Subsch. ID : 10 Det. descr. : EAT Enable Action related to SPIRE_OFF TC(19,4)	DC3A1185	
		Execute Telecommand <p style="text-align: right;">EAT_SPIRE_OFF_N_PPS</p> TC Control Flags : <p style="text-align: right;">GBM IL DSE            --Y -- ---</p> Subsch. ID : 10 Det. descr. : EAT Disable Parameter Passing TC(8,4,108,2)	DC3A2185	
		Execute Telecommand <p style="text-align: right;">EAT_SPIRE_OFF_N_AHI</p> TC Control Flags : <p style="text-align: right;">GBM IL DSE            --Y -- ---</p> Subsch. ID : 10 Det. descr. : EAT Action Handling ID TC(8,4,108,3)	DC3A3185	
		This OBCP is triggered by DPU Power anomaly (5,2,0xC010) from SPIRE REDUNDANT		

Loading of the EAT entries related to OBCPs  
 File: H\_CRP\_DHS\_XEAT.xls  
 Author: S. Manganelli



Step No.	Time	Activity/Remarks	TC/TLM	Display/ Branch
		Execute Telecommand <p style="text-align: center;"><b>EAT_SPIRE_OFF_R</b></p> Command Parameter(s) : 32-bit value           DPV32185 32-bit value           DPV32185  TC Control Flags : <p style="text-align: center;">GBM IL DSE --Y -- ---</p> Subsch. ID : 10 Det. descr. : EAT start SPIRE_OFF OBCP TC(19,1) from Redundant	DC3A4185	
		Execute Telecommand <p style="text-align: center;"><b>EAT_SPIRE_OFF_R_ENABLE</b></p> TC Control Flags : <p style="text-align: center;">GBM IL DSE --Y -- ---</p> Subsch. ID : 10 Det. descr. : EAT Enable Action related to SPIRE_OFF TC(19,4)	DC3A5185	
		Execute Telecommand <p style="text-align: center;"><b>EAT_SPIRE_OFF_R_PPS</b></p> TC Control Flags : <p style="text-align: center;">GBM IL DSE --Y -- ---</p> Subsch. ID : 10 Det. descr. : EAT Disable Parameter Passing TC(8,4,108,2)	DC3A6185	
		Execute Telecommand <p style="text-align: center;"><b>EAT_SPIRE_OFF_R_AHI</b></p> TC Control Flags : <p style="text-align: center;">GBM IL DSE --Y -- ---</p> Subsch. ID : 10 Det. descr. : EAT Action Handling ID TC(8,4,108,3)	DC3A7185	
		<b>This OBCP is triggered by DLL FDIR (5,x,152)</b>		
		Execute Telecommand <p style="text-align: center;"><b>EAT_SPIRE_OFF_DLL</b></p> Command Parameter(s) : 32-bit value           DPV32185 32-bit value           DPV32185  TC Control Flags : <p style="text-align: center;">GBM IL DSE --Y -- ---</p> Subsch. ID : 10 Det. descr. : EAT start SPIRE_OFF OBCP TC(19,1) from DLL FDIR	DC3A8185	

Loading of the EAT entries related to OBCPs  
 File: H\_CRP\_DHS\_XEAT.xls  
 Author: S. Manganelli



Step No.	Time	Activity/Remarks	TC/TLM	Display/ Branch
		Execute Telecommand <p style="text-align: center;"><b>EAT_SPIRE_OFF_DLL_ENABLE</b></p> <i>TC Control Flags :</i> <p style="text-align: right;">GBM IL DSE --Y -- --</p> <i>Subsch. ID : 10</i> Det. descr. : EAT Enable Action related to SPIRE_OFF TC(19,4)	DC3A9185	
		Execute Telecommand <p style="text-align: center;"><b>EAT_SPIRE_OFF_DLL_PPS</b></p> <i>TC Control Flags :</i> <p style="text-align: right;">GBM IL DSE --Y -- --</p> <i>Subsch. ID : 10</i> Det. descr. : EAT Disable Parameter Passing TC(8,4,108,2)	DC3AA185	
		Execute Telecommand <p style="text-align: center;"><b>EAT_SPIRE_OFF_DLL_AHI</b></p> <i>TC Control Flags :</i> <p style="text-align: right;">GBM IL DSE --Y -- --</p> <i>Subsch. ID : 10</i> Det. descr. : EAT Action Handling ID TC(8,4,108,3)	DC3AB185	
		<b>This OBCP is triggered by TFL TC FDIR (5,x,171)</b>		
		Execute Telecommand <p style="text-align: center;"><b>EAT_SPIRE_OFF_TFL</b></p> <i>Command Parameter(s) :</i> <p style="text-align: right;">32-bit value           DPV32185    0 &lt;hex&gt; (Def)            32-bit value           DPV32185    0 &lt;hex&gt; (Def)</p> <i>TC Control Flags :</i> <p style="text-align: right;">GBM IL DSE --Y -- --</p> <i>Subsch. ID : 10</i> Det. descr. : EAT start SPIRE_OFF OBCP TC(19,1) from TFL TC FDIR	DC3AC185	
		Execute Telecommand <p style="text-align: center;"><b>EAT_SPIRE_OFF_TFL_ENABLE</b></p> <i>TC Control Flags :</i> <p style="text-align: right;">GBM IL DSE --Y -- --</p> <i>Subsch. ID : 10</i> Det. descr. : EAT Enable Action related to SPIRE_OFF TC(19,4)	DC3AD185	

Loading of the EAT entries related to OBCPs  
 File: H\_CRP\_DHS\_XEAT.xls  
 Author: S. Manganelli



Step No.	Time	Activity/Remarks	TC/TLM	Display/ Branch
		Execute Telecommand <p style="text-align: right;">EAT_SPIRE_OFF_TFL_PPS</p> TC Control Flags : <p style="text-align: right;">GBM IL DSE  ---Y -- ---</p> Subsch. ID : 10 Det. descr. : EAT Disable Parameter Passing TC(8,4,108,2)	DC3AE185	
		Execute Telecommand <p style="text-align: right;">EAT_SPIRE_OFF_TFL_AHI</p> TC Control Flags : <p style="text-align: right;">GBM IL DSE  ---Y -- ---</p> Subsch. ID : 10 Det. descr. : EAT Action Handling ID TC(8,4,108,3)	DC3AF185	
4		Load DB_OBCP_H_SPIRE_OFF_CTRL - EAT part		Next Step: 5
		<b>This OBCP is triggered by TFL TM FDIR (5,x,185)</b>		
		Execute Telecommand <p style="text-align: right;">EAT_SPIRE_OFF_CTRL</p> Command Parameter(s) : 32-bit value           DPV32185    0 <hex> (Def) 32-bit value           DPV32185    0 <hex> (Def) TC Control Flags : <p style="text-align: right;">GBM IL DSE  ---Y -- ---</p> Subsch. ID : 10 Det. descr. : EAT start SPIRE_OFF_CTRL OBCP TC(19,1)	DC4A0185	
		Execute Telecommand <p style="text-align: right;">EAT_SPIRE_OFF_CTRL_En</p> TC Control Flags : <p style="text-align: right;">GBM IL DSE  ---Y -- ---</p> Subsch. ID : 10 Det. descr. : EAT Enable Action related to SPIRE_OFF_CTRL TC(19,4)	DC4A1185	
		Execute Telecommand <p style="text-align: right;">EAT_SPIRE_OFF_CTRL_PPS</p> TC Control Flags : <p style="text-align: right;">GBM IL DSE  ---Y -- ---</p> Subsch. ID : 10 Det. descr. : EAT Disable Parameter Passing TC(8,4,108,2)	DC4A2185	



Loading of the EAT entries related to OBCPs  
 File: H\_CRP\_DHS\_XEAT.xls  
 Author: S. Manganelli



Step No.	Time	Activity/Remarks	TC/TLM	Display/ Branch
		Execute Telecommand <p style="text-align: center;"><b>EAT_SPIRE_OFF_CTRL_AHI</b></p> TC Control Flags : <p style="text-align: right;">GBM IL DSE --Y -- ---</p> Subsch. ID : 10 Det. descr. : EAT Action Handling ID TC(8,4,108,3)	DC4A3185	
5		Load DB_OBCP_H_SPIRE_STANDBY - EAT part  <b>This OBCP is only called by DB_OBCP_H_MODE_PL_SC</b>		Next Step: 6
6		Load DB_OBCP_H_SPIRE_OPE_STOP - EAT part  <b>This OBCP is triggered by operation anomaly (5,2,0xC100) from SPIRE NOMINAL</b>		Next Step: 7
		Execute Telecommand <p style="text-align: center;"><b>EAT_SPIRE_OP_STOP_N</b></p> Command Parameter(s) : 32-bit value                   DPV32185     0 <hex> (Def) 32-bit value                   DPV32185     0 <hex> (Def)  TC Control Flags : <p style="text-align: right;">GBM IL DSE --Y -- ---</p> Subsch. ID : 10 Det. descr. : EAT start SPIRE_OPE_STOP OBCP TC(19,1) from Nominal	DC6A0185	
		Execute Telecommand <p style="text-align: center;"><b>EAT_SPIRE_OP_STOP_N_En</b></p> TC Control Flags : <p style="text-align: right;">GBM IL DSE --Y -- ---</p> Subsch. ID : 10 Det. descr. : EAT Enable Action related to SPIRE_OPE_STOP_OBCP TC(19,4)	DC6A1185	
		Execute Telecommand <p style="text-align: center;"><b>EAT_SPIRE_OP_STOP_N_PPS</b></p> TC Control Flags : <p style="text-align: right;">GBM IL DSE --Y -- ---</p> Subsch. ID : 10 Det. descr. : EAT Disable Parameter Passing TC(8,4,108,2)	DC6A2185	

Loading of the EAT entries related to OBCPs  
 File: H\_CRP\_DHS\_XEAT.xls  
 Author: S. Manganelli



Step No.	Time	Activity/Remarks	TC/TLM	Display/ Branch
		Execute Telecommand <p style="text-align: center;"><b>EAT_SPIRE_OP_STOP_N_AHI</b></p> <i>TC Control Flags :</i> <p style="text-align: right;">GBM IL DSE --Y -- ---</p> <i>Subsch. ID : 10</i> Det. descr. : EAT Action Handling ID TC(8,4,108,3)	DC6A3185	
		<b>This OBCP is triggered by operation anomaly (5,2,0xC100) from SPIRE REDUNDANT</b>		
		Execute Telecommand <p style="text-align: center;"><b>EAT_SPIRE_OP_STOP_R</b></p> <i>Command Parameter(s) :</i> 32-bit value           DPV32185     0 <hex> (Def) 32-bit value           DPV32185     0 <hex> (Def)  <i>TC Control Flags :</i> <p style="text-align: right;">GBM IL DSE --Y -- ---</p> <i>Subsch. ID : 10</i> Det. descr. : EAT start SPIRE_OPE_STOP OBCP TC(19,1) from Redundant	DC6A4185	
		Execute Telecommand <p style="text-align: center;"><b>EAT_SPIRE_OP_STOP_R_En</b></p> <i>TC Control Flags :</i> <p style="text-align: right;">GBM IL DSE --Y -- ---</p> <i>Subsch. ID : 10</i> Det. descr. : EAT Enable Action related to SPIRE_OPE_STOP_OBCP TC(19,4)	DC6A5185	
		Execute Telecommand <p style="text-align: center;"><b>EAT_SPIRE_OP_STOP_R_PPS</b></p> <i>TC Control Flags :</i> <p style="text-align: right;">GBM IL DSE --Y -- ---</p> <i>Subsch. ID : 10</i> Det. descr. : EAT Disable Parameter Passing TC(8,4,108,2)	DC6A6185	
		Execute Telecommand <p style="text-align: center;"><b>EAT_SPIRE_OP_STOP_R_AHI</b></p> <i>TC Control Flags :</i> <p style="text-align: right;">GBM IL DSE --Y -- ---</p> <i>Subsch. ID : 10</i> Det. descr. : EAT Action Handling ID TC(8,4,108,3)	DC6A7185	
7		Load DB_OBCP_H_SPIRE_OPE_RESUME - EAT part		Next Step: 8
		<b>This OBCP is triggered by operation resume (5,2,0xC110) from SPIRE NOMINAL</b>		

Loading of the EAT entries related to OBCPs  
 File: H\_CRP\_DHS\_XEAT.xls  
 Author: S. Manganelli



Step No.	Time	Activity/Remarks	TC/TLM	Display/ Branch
		Execute Telecommand <p style="text-align: right;">EAT_SPIRE_OP_RES_N</p> Command Parameter(s) : 32-bit value                      DPV32185 TC Control Flags : <p style="text-align: right;">GBM IL DSE --Y -- ---</p> Subsch. ID : 10 Det. descr. : EAT start SPIRE_OPE_RESUME OBCP TC(19,1) from Nominal	DC7A0185  0 <hex> (Def)	
		Execute Telecommand <p style="text-align: right;">EAT_SPIRE_OP_RES_N_En</p> TC Control Flags : <p style="text-align: right;">GBM IL DSE --Y -- ---</p> Subsch. ID : 10 Det. descr. : EAT Enable Action related to SPIRE_OPE_RESUME_OBCP TC(19,4)	DC7A1185	
		Execute Telecommand <p style="text-align: right;">EAT_SPIRE_OP_RES_N_PPS</p> TC Control Flags : <p style="text-align: right;">GBM IL DSE --Y -- ---</p> Subsch. ID : 10 Det. descr. : EAT Disable Parameter Passing TC(8,4,108,2)	DC7A2185	
		Execute Telecommand <p style="text-align: right;">EAT_SPIRE_OP_RES_N_AHI</p> TC Control Flags : <p style="text-align: right;">GBM IL DSE --Y -- ---</p> Subsch. ID : 10 Det. descr. : EAT Action Handling ID TC(8,4,108,3)	DC7A3185	
		This OBCP is triggered by operation resume (5,2,0xC110) from SPIRE REDUNDANT		
		Execute Telecommand <p style="text-align: right;">EAT_SPIRE_OP_RES_R</p> Command Parameter(s) : 32-bit value                      DPV32185 TC Control Flags : <p style="text-align: right;">GBM IL DSE --Y -- ---</p> Subsch. ID : 10 Det. descr. : EAT start SPIRE_OPE_RESUME OBCP TC(19,1) from Redundant	DC7A4185  0 <hex> (Def)	

Loading of the EAT entries related to OBCPs  
 File: H\_CRP\_DHS\_XEAT.xls  
 Author: S. Manganelli



Step No.	Time	Activity/Remarks	TC/TLM	Display/ Branch
		Execute Telecommand <p style="text-align: right;"><b>EAT_SPIRE_OP_RES_R_En</b></p> <i>TC Control Flags :</i> <p style="text-align: right;">GBM IL DSE --Y -- ---</p> <i>Subsch. ID : 10</i> Det. descr. : EAT Enable Action related to SPIRE_OPE_RESUME_OBCP TC(19,4)	DC7A5185	
		Execute Telecommand <p style="text-align: right;"><b>EAT_SPIRE_OP_RES_R_PPS</b></p> <i>TC Control Flags :</i> <p style="text-align: right;">GBM IL DSE --Y -- ---</p> <i>Subsch. ID : 10</i> Det. descr. : EAT Disable Parameter Passing TC(8,4,108,2)	DC7A6185	
		Execute Telecommand <p style="text-align: right;"><b>EAT_SPIRE_OP_RES_R_AHI</b></p> <i>TC Control Flags :</i> <p style="text-align: right;">GBM IL DSE --Y -- ---</p> <i>Subsch. ID : 10</i> Det. descr. : EAT Action Handling ID TC(8,4,108,3)	DC7A7185	
8		Load DB_OBCP_H_PACS_SAFE - EAT part		Next Step: 9
		<b>This OBCP is triggered by GO Safe (5,2,4) from PACS NOMINAL</b>		
		Execute Telecommand <p style="text-align: right;"><b>EAT_PACS_SAFE_N</b></p> <i>TC Control Flags :</i> <p style="text-align: right;">GBM IL DSE --Y -- ---</p> <i>Subsch. ID : 10</i> Det. descr. : EAT start PACS_SAFE OBCP TC(19,1) from Nominal	DC8A0185	
		Execute Telecommand <p style="text-align: right;"><b>EAT_PACS_SAFE_N_EN</b></p> <i>TC Control Flags :</i> <p style="text-align: right;">GBM IL DSE --Y -- ---</p> <i>Subsch. ID : 10</i> Det. descr. : EAT Enable Action related to PACS_SAFE TC(19,4)	DC8A1185	

Loading of the EAT entries related to OBCPs  
 File: H\_CRP\_DHS\_XEAT.xls  
 Author: S. Manganelli



Step No.	Time	Activity/Remarks	TC/TLM	Display/ Branch
		Execute Telecommand <p style="text-align: right;"><b>EAT_PACS_SAFE_N_PPS</b></p> <i>TC Control Flags :</i> <p style="text-align: right;">GBM IL DSE          --Y -- --</p> <i>Subsch. ID : 10</i> <i>Det. descr. : EAT Disable Parameter Passing</i> <i>TC(8,4,108,2)</i>	DC8A2185	
		Execute Telecommand <p style="text-align: right;"><b>EAT_PACS_SAFE_N_AHI</b></p> <i>TC Control Flags :</i> <p style="text-align: right;">GBM IL DSE          --Y -- --</p> <i>Subsch. ID : 10</i> <i>Det. descr. : EAT Action Handling ID TC(8,4,108,3)</i>	DC8A3185	
		<b>This OBCP is triggered by GO Safe (5,2,4) from PACS REDUNDANT</b>		
		Execute Telecommand <p style="text-align: right;"><b>EAT_PACS_SAFE_R</b></p> <i>TC Control Flags :</i> <p style="text-align: right;">GBM IL DSE          --Y -- --</p> <i>Subsch. ID : 10</i> <i>Det. descr. : EAT start PACS_SAFE OBCP TC(19,1) from Redundant</i>	DC8A4185	
		Execute Telecommand <p style="text-align: right;"><b>EAT_PACS_SAFE_R_EN</b></p> <i>TC Control Flags :</i> <p style="text-align: right;">GBM IL DSE          --Y -- --</p> <i>Subsch. ID : 10</i> <i>Det. descr. : EAT Enable Action related to PACS_SAFE</i> <i>TC(19,4)</i>	DC8A5185	
		Execute Telecommand <p style="text-align: right;"><b>EAT_PACS_SAFE_R_PPS</b></p> <i>TC Control Flags :</i> <p style="text-align: right;">GBM IL DSE          --Y -- --</p> <i>Subsch. ID : 10</i> <i>Det. descr. : EAT Disable Parameter Passing</i> <i>TC(8,4,108,2)</i>	DC8A6185	
		Execute Telecommand <p style="text-align: right;"><b>EAT_PACS_SAFE_R_AHI</b></p> <i>TC Control Flags :</i> <p style="text-align: right;">GBM IL DSE          --Y -- --</p> <i>Subsch. ID : 10</i> <i>Det. descr. : EAT Action Handling ID TC(8,4,108,3)</i>	DC8A7185	

Loading of the EAT entries related to OBCPs  
 File: H\_CRP\_DHS\_XEAT.xls  
 Author: S. Manganelli



Step No.	Time	Activity/Remarks	TC/TLM	Display/ Branch
9		Load DB_OBCP_H_PACS_POWER_CYCLE - EAT part		Next Step: 10
		<b>This OBCP is triggered by Power Cycle (5,2,6) from PACS NOMINAL</b>		
		Execute Telecommand <p style="text-align: right;">EAT_PACS_PWR_N</p> Command Parameter(s) : 32-bit value                           DPV32185 TC Control Flags : <p style="text-align: right;">GBM IL DSE --Y -- ---</p> Subsch. ID : 10 Det. descr. : EAT start PACS_POWER_CYCLE OBCP TC(19,1) from Nominal	DCAA0185  0 <hex> (Def)	
		Execute Telecommand <p style="text-align: right;">EAT_PACS_PWR_N_En</p> TC Control Flags : <p style="text-align: right;">GBM IL DSE --Y -- ---</p> Subsch. ID : 10 Det. descr. : EAT Enable Action related to PACS_POWER_CYCLE TC(19,4)	DCAA1185	
		Execute Telecommand <p style="text-align: right;">EAT_PACS_PWR_N_PPS</p> TC Control Flags : <p style="text-align: right;">GBM IL DSE --Y -- ---</p> Subsch. ID : 10 Det. descr. : EAT Disable Parameter Passing TC(8,4,108,2)	DCAA2185	
		Execute Telecommand <p style="text-align: right;">EAT_PACS_PWR_N_AHI</p> TC Control Flags : <p style="text-align: right;">GBM IL DSE --Y -- ---</p> Subsch. ID : 10 Det. descr. : EAT Action Handling ID TC(8,4,108,3)	DCAA3185	
		<b>This OBCP is triggered by Power Cycle (5,2,6) from PACS REDUNDANT</b>		

Loading of the EAT entries related to OBCPs  
 File: H\_CRP\_DHS\_XEAT.xls  
 Author: S. Manganelli



Step No.	Time	Activity/Remarks	TC/TLM	Display/ Branch
		Execute Telecommand <p style="text-align: right;">EAT_PACS_PWR_R</p> Command Parameter(s) : 32-bit value                      DPV32185 TC Control Flags : <p style="text-align: right;">GBM IL DSE            --Y -- ---</p> Subsch. ID : 10 Det. descr. : EAT start PACS_POWER_CYCLE OBCP TC(19,1)from Redundant	DCAA4185  0 <hex> (Def)	
		Execute Telecommand <p style="text-align: right;">EAT_PACS_PWR_R_ENABLE</p> TC Control Flags : <p style="text-align: right;">GBM IL DSE            --Y -- ---</p> Subsch. ID : 10 Det. descr. : EAT Enable Action related to PACS_POWER_CYCLE TC(19,4)	DCAA5185	
		Execute Telecommand <p style="text-align: right;">EAT_PACS_PWR_R_PPS</p> TC Control Flags : <p style="text-align: right;">GBM IL DSE            --Y -- ---</p> Subsch. ID : 10 Det. descr. : EAT Disable Parameter Passing TC(8,4,108,2)	DCAA6185	
		Execute Telecommand <p style="text-align: right;">EAT_PACS_PWR_R_AHI</p> TC Control Flags : <p style="text-align: right;">GBM IL DSE            --Y -- ---</p> Subsch. ID : 10 Det. descr. : EAT Action Handling ID TC(8,4,108,3)	DCAA7185	
10		Load DB_OBCP_H_PACS_IMMEDIATE_OFF - EAT part		Next Step: 11
		<b>This OBCP is triggered by Immediate OFF (5,2,13) from PACS NOMINAL</b>		
		Execute Telecommand <p style="text-align: right;">EAT_PACS_IMM_OFF_N</p> TC Control Flags : <p style="text-align: right;">GBM IL DSE            --Y -- ---</p> Subsch. ID : 10 Det. descr. : EAT start PACS_IMMEDIATE_OFF OBCP TC(19,1) from Nominal	DCBA0185	

Loading of the EAT entries related to OBCPs  
 File: H\_CRP\_DHS\_XEAT.xls  
 Author: S. Manganelli



Step No.	Time	Activity/Remarks	TC/TLM	Display/ Branch
		Execute Telecommand <p style="text-align: right;">EAT_PACS_IMM_OFF_N_En</p> TC Control Flags : <p style="text-align: right;">GBM IL DSE  ---Y -- ---</p> Subsch. ID : 10 Det. descr. : EAT Enable Action related to PACS_IMMEDIATE_OFF TC(19,4)	DCBA1185	
		Execute Telecommand <p style="text-align: right;">EAT_PACS_IMM_OFF_N_PPS</p> TC Control Flags : <p style="text-align: right;">GBM IL DSE  ---Y -- ---</p> Subsch. ID : 10 Det. descr. : EAT Disable Parameter Passing TC(8,4,108,2)	DCBA2185	
		Execute Telecommand <p style="text-align: right;">EAT_PACS_IMM_OFF_N_AHI</p> TC Control Flags : <p style="text-align: right;">GBM IL DSE  ---Y -- ---</p> Subsch. ID : 10 Det. descr. : EAT Action Handling ID TC(8,4,108,3)	DCBA3185	
		<b>This OBCP is triggered by Immediate OFF (5,2,13) from  PACS REDUNDANT</b>		
		Execute Telecommand <p style="text-align: right;">EAT_PACS_IMM_R</p> TC Control Flags : <p style="text-align: right;">GBM IL DSE  ---Y -- ---</p> Subsch. ID : 10 Det. descr. : EAT start PACS_IMMEDIATE_OFF OBCP TC(19,1)from Redundant	DCBA4185	
		Execute Telecommand <p style="text-align: right;">EAT_PACS_IMM_R_En</p> TC Control Flags : <p style="text-align: right;">GBM IL DSE  ---Y -- ---</p> Subsch. ID : 10 Det. descr. : EAT Enable Action related to PACS_IMMEDIATE_OFF TC(19,4)	DCBA5185	
		Execute Telecommand <p style="text-align: right;">EAT_PACS_IMM_R_PPS</p> TC Control Flags : <p style="text-align: right;">GBM IL DSE  ---Y -- ---</p> Subsch. ID : 10 Det. descr. : EAT Disable Parameter Passing TC(8,4,108,2)	DCBA6185	



Loading of the EAT entries related to OBCPs  
 File: H\_CRP\_DHS\_XEAT.xls  
 Author: S. Manganelli



Step No.	Time	Activity/Remarks	TC/TLM	Display/ Branch
		Execute Telecommand <p style="text-align: right;">EAT_PACS_IMM_R_AHI</p> TC Control Flags : <p style="text-align: right;">GBM IL DSE  ---Y -- ---</p> Subsch. ID : 10 Det. descr. : EAT Action Handling ID TC(8,4,108,3)	DCBA7185	
		<b>This OBCP is triggered by DLL FDIR (5,x,153)</b>		
		Execute Telecommand <p style="text-align: right;">EAT_PACS_IMM_DLL</p> Command Parameter(s) : 32-bit value                   DPV32185                   0 <hex> (Def) TC Control Flags : <p style="text-align: right;">GBM IL DSE  ---Y -- ---</p> Subsch. ID : 10 Det. descr. : EAT start PACS_IMMEDIATE_OFF OBCP TC(19,1) from DLL FDIR	DCBA8185	
		Execute Telecommand <p style="text-align: right;">EAT_PACS_IMM_DLL_En</p> TC Control Flags : <p style="text-align: right;">GBM IL DSE  ---Y -- ---</p> Subsch. ID : 10 Det. descr. : EAT Enable Action related to PACS_IMMEDIATE_OFF TC(19,4)	DCBA9185	
		Execute Telecommand <p style="text-align: right;">EAT_PACS_IMM_DLL_PPS</p> TC Control Flags : <p style="text-align: right;">GBM IL DSE  ---Y -- ---</p> Subsch. ID : 10 Det. descr. : EAT Disable Parameter Passing TC(8,4,108,2)	DCBAA185	
		Execute Telecommand <p style="text-align: right;">EAT_PACS_IMM_DLL_AHI</p> TC Control Flags : <p style="text-align: right;">GBM IL DSE  ---Y -- ---</p> Subsch. ID : 10 Det. descr. : EAT Action Handling ID TC(8,4,108,3)	DCBAB185	
		<b>This OBCP is triggered by TFL TC FDIR (5,x,172)</b>		

Loading of the EAT entries related to OBCPs  
 File: H\_CRP\_DHS\_XEAT.xls  
 Author: S. Manganelli



Step No.	Time	Activity/Remarks	TC/TLM	Display/ Branch
		Execute Telecommand <p style="text-align: right;">EAT_PACS_IMM_TC</p> Command Parameter(s) : 32-bit value                      DPV32185 TC Control Flags : <p style="text-align: right;">GBM IL DSE            --Y -- ---</p> Subsch. ID : 10 Det. descr. : EAT start PACS_IMMEDIATE_OFF OBCP TC(19,1) from TFL TC FDIR	DCBAC185  0 <hex> (Def)	
		Execute Telecommand <p style="text-align: right;">EAT_PACS_IMM_TC_En</p> TC Control Flags : <p style="text-align: right;">GBM IL DSE            --Y -- ---</p> Subsch. ID : 10 Det. descr. : EAT Enable Action related to PACS_IMMEDIATE_OFF TC(19,4)	DCBAD185	
		Execute Telecommand <p style="text-align: right;">EAT_PACS_IMM_TC_PPS</p> TC Control Flags : <p style="text-align: right;">GBM IL DSE            --Y -- ---</p> Subsch. ID : 10 Det. descr. : EAT Disable Parameter Passing TC(8,4,108,2)	DCBAE185	
		Execute Telecommand <p style="text-align: right;">EAT_PACS_IMM_TC_AHI</p> TC Control Flags : <p style="text-align: right;">GBM IL DSE            --Y -- ---</p> Subsch. ID : 10 Det. descr. : EAT Action Handling ID TC(8,4,108,3)	DCBAF185	
		<b>This OBCP is triggered by TFL TM FDIR (5,x,186)</b>		
		Execute Telecommand <p style="text-align: right;">EAT_PACS_IMM_TM</p> Command Parameter(s) : 32-bit value                      DPV32185 TC Control Flags : <p style="text-align: right;">GBM IL DSE            --Y -- ---</p> Subsch. ID : 10 Det. descr. : EAT start PACS_IMMEDIATE_OFF OBCP TC(19,1) from TFL TM FDIR	DCBB0185  0 <hex> (Def)	

Loading of the EAT entries related to OBCPs  
 File: H\_CRP\_DHS\_XEAT.xls  
 Author: S. Manganelli



Step No.	Time	Activity/Remarks	TC/TLM	Display/ Branch
		Execute Telecommand <p style="text-align: right;"><b>EAT_PACS_IMM_TM_En</b></p> <i>TC Control Flags :</i> <p style="text-align: right;">GBM IL DSE --Y -- --</p> <i>Subsch. ID : 10</i> Det. descr. : EAT Enable Action related to PACS_IMMEDIATE_OFF TC(19,4)	DCBB1185	
		Execute Telecommand <p style="text-align: right;"><b>EAT_PACS_IMM_TM_PPS</b></p> <i>TC Control Flags :</i> <p style="text-align: right;">GBM IL DSE --Y -- --</p> <i>Subsch. ID : 10</i> Det. descr. : EAT Disable Parameter Passing TC(8,4,108,2)	DCBB2185	
		Execute Telecommand <p style="text-align: right;"><b>EAT_PACS_IMM_TM_AHI</b></p> <i>TC Control Flags :</i> <p style="text-align: right;">GBM IL DSE --Y -- --</p> <i>Subsch. ID : 10</i> Det. descr. : EAT Action Handling ID TC(8,4,108,3)	DCBB3185	
11		Load DB_OBCP_H_PACS_NORMAL_OFF - EAT part		Next Step: 12
		<b>This OBCP is triggered by Normal OFF (5,2,25) from PACS NOMINAL</b>		
		Execute Telecommand <p style="text-align: right;"><b>EAT_PACS_NORM_OFF_N</b></p> <i>TC Control Flags :</i> <p style="text-align: right;">GBM IL DSE --Y -- --</p> <i>Subsch. ID : 10</i> Det. descr. : EAT start PACS_NORMAL_OFF OBCP TC(19,1) from Nominal	DCCA0185	
		Execute Telecommand <p style="text-align: right;"><b>EAT_PACS_NORM_OFF_N_En</b></p> <i>TC Control Flags :</i> <p style="text-align: right;">GBM IL DSE --Y -- --</p> <i>Subsch. ID : 10</i> Det. descr. : EAT Enable Action related to PACS_NORMAL_OFF TC(19,4)	DCCA1185	

Loading of the EAT entries related to OBCPs  
 File: H\_CRP\_DHS\_XEAT.xls  
 Author: S. Manganelli



Step No.	Time	Activity/Remarks	TC/TLM	Display/ Branch
		Execute Telecommand <p style="text-align: center;"><b>EAT_PACS_NORM_OFF_N_PPS</b></p> <i>TC Control Flags :</i> <p style="text-align: right;">GBM IL DSE          --Y -- --</p> <i>Subsch. ID : 10</i> Det. descr. : EAT Disable Parameter Passing TC(8,4,108,2)	DCCA2185	
		Execute Telecommand <p style="text-align: center;"><b>EAT_PACS_NORM_OFF_N_AHI</b></p> <i>TC Control Flags :</i> <p style="text-align: right;">GBM IL DSE          --Y -- --</p> <i>Subsch. ID : 10</i> Det. descr. : EAT Action Handling ID TC(8,4,108,3)	DCCA3185	
		<b>This OBCP is triggered by Normal OFF (5,2,25) from PACS REDUNDANT</b>		
		Execute Telecommand <p style="text-align: center;"><b>EAT_PACS_NORM_OFF_R</b></p> <i>TC Control Flags :</i> <p style="text-align: right;">GBM IL DSE          --Y -- --</p> <i>Subsch. ID : 10</i> Det. descr. : EAT start PACS_NORMAL_OFF OBCP TC(19,1)from Redundant	DCCA4185	
		Execute Telecommand <p style="text-align: center;"><b>EAT_PACS_NORM_OFF_R_En</b></p> <i>TC Control Flags :</i> <p style="text-align: right;">GBM IL DSE          --Y -- --</p> <i>Subsch. ID : 10</i> Det. descr. : EAT Enable Action related to PACS_NORMAL_OFF TC(19,4)	DCCA5185	
		Execute Telecommand <p style="text-align: center;"><b>EAT_PACS_NORM_OFF_R_PPS</b></p> <i>TC Control Flags :</i> <p style="text-align: right;">GBM IL DSE          --Y -- --</p> <i>Subsch. ID : 10</i> Det. descr. : EAT Disable Parameter Passing TC(8,4,108,2)	DCCA6185	
		Execute Telecommand <p style="text-align: center;"><b>EAT_PACS_NORM_OFF_R_AHI</b></p> <i>TC Control Flags :</i> <p style="text-align: right;">GBM IL DSE          --Y -- --</p> <i>Subsch. ID : 10</i> Det. descr. : EAT Action Handling ID TC(8,4,108,3)	DCCA7185	

Loading of the EAT entries related to OBCPs  
 File: H\_CRP\_DHS\_XEAT.xls  
 Author: S. Manganelli



Step No.	Time	Activity/Remarks	TC/TLM	Display/ Branch
12		Load DB_OBCP_H_HIFI_RESET - EAT part		Next Step: 13
		This OBCP is triggered by DLL FDIR (5,x,151)		
		Execute Telecommand <p style="text-align: right;">EAT_HIFI_RESET_DLL</p> Command Parameter(s) : 32-bit value           DPV32185    0 <hex> (Def) 32-bit value           DPV32185    0 <hex> (Def)  TC Control Flags : <p style="text-align: right;">GBM IL DSE --Y -- ---</p> Subsch. ID : 10 Det. descr. : EAT start HIFI_RESET OBCP TC(19,1) from DLL FDIR	DCDA0185	
		Execute Telecommand <p style="text-align: right;">EAT_HIFI_RESET_DLL_En</p> TC Control Flags : <p style="text-align: right;">GBM IL DSE --Y -- ---</p> Subsch. ID : 10 Det. descr. : EAT Enable Action related to HIFI_RESET TC(19,4)	DCDA1185	
		Execute Telecommand <p style="text-align: right;">EAT_HIFI_RESET_DLL_PPS</p> TC Control Flags : <p style="text-align: right;">GBM IL DSE --Y -- ---</p> Subsch. ID : 10 Det. descr. : EAT Disable Parameter Passing TC(8,4,108,2)	DCDA2185	
		Execute Telecommand <p style="text-align: right;">EAT_HIFI_RESET_DLL_AHI</p> TC Control Flags : <p style="text-align: right;">GBM IL DSE --Y -- ---</p> Subsch. ID : 10 Det. descr. : EAT Action Handling ID TC(8,4,108,3)	DCDA3185	
		This OBCP is triggered by TFL TC FDIR (5,x,170)		

Loading of the EAT entries related to OBCPs  
 File: H\_CRP\_DHS\_XEAT.xls  
 Author: S. Manganelli



Step No.	Time	Activity/Remarks	TC/TLM	Display/ Branch
		Execute Telecommand <p style="text-align: center;"><b>EAT_HIFI_RESET_TC</b></p> Command Parameter(s) : 32-bit value           DPV32185 32-bit value           DPV32185  TC Control Flags : <p style="text-align: right;">GBM IL DSE --Y -- --</p> Subsch. ID : 10 Det. descr. : EAT start HIFI_RESET OBCP TC(19,1) from TFL TC FDIR	DCDA4185	
		Execute Telecommand <p style="text-align: center;"><b>EAT_HIFI_RESET_TC_En</b></p> TC Control Flags : <p style="text-align: right;">GBM IL DSE --Y -- --</p> Subsch. ID : 10 Det. descr. : EAT Enable Action related to HIFI_RESET TC(19,4)	DCDA5185	
		Execute Telecommand <p style="text-align: center;"><b>EAT_HIFI_RESET_TC_PPS</b></p> TC Control Flags : <p style="text-align: right;">GBM IL DSE --Y -- --</p> Subsch. ID : 10 Det. descr. : EAT Disable Parameter Passing TC(8,4,108,2)	DCDA6185	
		Execute Telecommand <p style="text-align: center;"><b>EAT_HIFI_RESET_TC_AHI</b></p> TC Control Flags : <p style="text-align: right;">GBM IL DSE --Y -- --</p> Subsch. ID : 10 Det. descr. : EAT Action Handling ID TC(8,4,108,3)	DCDA7185	
		This OBCP is triggered by TFL TM FDIR (5,x,184)		
		Execute Telecommand <p style="text-align: center;"><b>EAT_HIFI_RESET_TM</b></p> Command Parameter(s) : 32-bit value           DPV32185 32-bit value           DPV32185  TC Control Flags : <p style="text-align: right;">GBM IL DSE --Y -- --</p> Subsch. ID : 10 Det. descr. : EAT start HIFI_RESET OBCP TC(19,1) from TFL TM FDIR	DCDA8185	

Loading of the EAT entries related to OBCPs  
 File: H\_CRP\_DHS\_XEAT.xls  
 Author: S. Manganelli



Step No.	Time	Activity/Remarks	TC/TLM	Display/ Branch
		Execute Telecommand <p style="text-align: center;"><b>EAT_HIFI_RESET_TM_En</b></p> <i>TC Control Flags :</i> <p style="text-align: center;">GBM IL DSE            --Y -- --</p> <i>Subsch. ID : 10</i> Det. descr. : EAT Enable Action related to HIFI_RESET TC(19,4)	DCDA9185	
		Execute Telecommand <p style="text-align: center;"><b>EAT_HIFI_RESET_TM_PPS</b></p> <i>TC Control Flags :</i> <p style="text-align: center;">GBM IL DSE            --Y -- --</p> <i>Subsch. ID : 10</i> Det. descr. : EAT Disable Parameter Passing TC(8,4,108,2)	DCDAA185	
		Execute Telecommand <p style="text-align: center;"><b>EAT_HIFI_RESET_TM_AHI</b></p> <i>TC Control Flags :</i> <p style="text-align: center;">GBM IL DSE            --Y -- --</p> <i>Subsch. ID : 10</i> Det. descr. : EAT Action Handling ID TC(8,4,108,3)	DCDAB185	
13		<i>Load DB_OBCP_H_HIFI_STANDBY - EAT part</i>  <b>This OBCP is only called by DB_OBCP_H_MODE_PL_SC</b>		Next Step: 14
14		<i>Report Event Action Table</i>  In the called procedure, choose the option "Report event detection list"  <b>Execute procedure H_FCP_DHS_3051.</b>		Next Step: END
<b>End of Procedure</b>				