

Loss of TM link
 File: H_CRP_DHS_3043.xls
 Author: cmevi-hp



Procedure Summary

Objectives

This procedure describes the steps needed to re-establish the TM link; the sequence of operations performed are in the following priority order:

- reset the TM Encoder in use;
- set the lowest bit rate (TM Encoder and TX in use);
- TM Encoder switchover;
- TTC chain switchover.

If after the execution of one of the above steps the telemetry is re-acquired the other steps will be skipped, otherwise next step has to be taken.

Summary of Constraints

n/a

Spacecraft Configuration

Start of Procedure

n/a

End of Procedure

n/a

Reference File(s)

Input Command Sequences

Output Command Sequences

Referenced Displays

ANDs GRDs SLDs

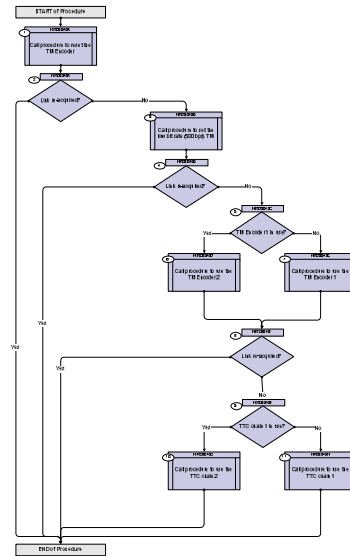
Configuration Control Information

DATE	FOP ISSUE	VERSION	MODIFICATION DESCRIPTION	AUTHOR	SPR REF
14/11/08	2	1	Created	cmevi-hp	

Loss of TM link
 File: H_CRP_DHS_3043.xls
 Author: cmevi-hp



Procedure Flowchart Overview



Loss of TM link
 File: H_CRP_DHS_3043.xls
 Author: cmevi-hp



Step No.	Time	Activity/Remarks	TC/TLM	Display/ Branch
Beginning of Procedure				
TC Seq. Name :HRD3043A (Reset TM Encoder) TimeTag Type: Sub Schedule ID: <input type="checkbox"/>				
1		Call procedure to reset the TM Encoder		Next Step: 2
		Execute procedure H_CRP_DHS_3012.		
2		Link re-acquired?		Next Step: No 3 Yes END
TC Seq. Name :HRD3043B (Set 500 bps) TimeTag Type: Sub Schedule ID: <input type="checkbox"/>				
3		Call procedure to set the low bit rate (500 bps) TM		Next Step: 4
		In the called procedure, skip step 1		
		Execute procedure H_CRP_TTC_TUL1.		
4		Link re-acquired?		Next Step: No 5 Yes END
TC Seq. Name :HRD3043C (Dummy sequence) TimeTag Type: Sub Schedule ID: <input type="checkbox"/>				
5		TM Encoder 1 in use?		Next Step: Yes 6 No 7
TC Seq. Name :HRD3043D (Use TM Encoder 2) TimeTag Type: Sub Schedule ID: <input type="checkbox"/>				

Loss of TM link
 File: H_CRP_DHS_3043.xls
 Author: cmevi-hp



Step No.	Time	Activity/Remarks	TC/TLM	Display/ Branch
6		Call procedure to use the TM Encoder 2		Next Step: 8
		In the called procedure, skip steps 1 to 9		
		Execute procedure H_FCP_DHS_3007.		
<p>TC Seq. Name :HRD3043E (Use TM Encoder 1)</p> <p>TimeTag Type: Sub Schedule ID:</p> <p><input type="checkbox"/></p>				
7		Call procedure to use the TM Encoder 1		Next Step: 8
		In the called procedure, skip steps 1 to 9		
		Execute procedure H_FCP_DHS_3006.		
<p>TC Seq. Name :HRD3043F (Dummy sequence)</p> <p>TimeTag Type: Sub Schedule ID:</p> <p><input type="checkbox"/></p>				
8		Link re-acquired?		Next Step: Yes END No 9
9		TTC chain 1 in use?		Next Step: Yes 10 No 11
<p>TC Seq. Name :HRD3043G (Use TTC chain 2)</p> <p>TimeTag Type: Sub Schedule ID:</p> <p><input type="checkbox"/></p>				
10		Call procedure to use the TTC chain 2		Next Step: END
		Execute procedure H_COP_TTC_T12.		

Loss of TM link
 File: H_CRP_DHS_3043.xls
 Author: cmevi-hp



Step No.	Time	Activity/Remarks	TC/TLM	Display/ Branch
<i>TC Seq. Name :HRD3043H (Use TTC chain 1)</i> <i>TimeTag Type:</i> <i>Sub Schedule ID:</i> <input type="checkbox"/>				
11		Call procedure to use the TTC chain 1		Next Step: END
		Execute procedure H_COP_TTC_T21.		
End of Procedure				