

Enable or disable RM CPDU TC
 File: H_CRP_DHS_3020.xls
 Author: S. Manganelli



Procedure Summary

Objectives

This procedure describes the steps needed to enable or disable a specified CPDU command in the specified RM (commands sent by Ground or CDMU ASW remain unaffected).

Summary of Constraints

Default status of the function: "Started".

When the function is stopped, it does not accept any other telecommands than the:

- Start Function TC(8,1,109);
- Report Function Status TC(8,5,109).

Thus, if the function is stopped this procedure cannot be executed.

Spacecraft Configuration

Start of Procedure

n/a

End of Procedure

n/a

Reference File(s)

Input Command Sequences

Output Command Sequences

HRD3020B
 HRD3020C

Referenced Displays

ANDs GRDs SLDs

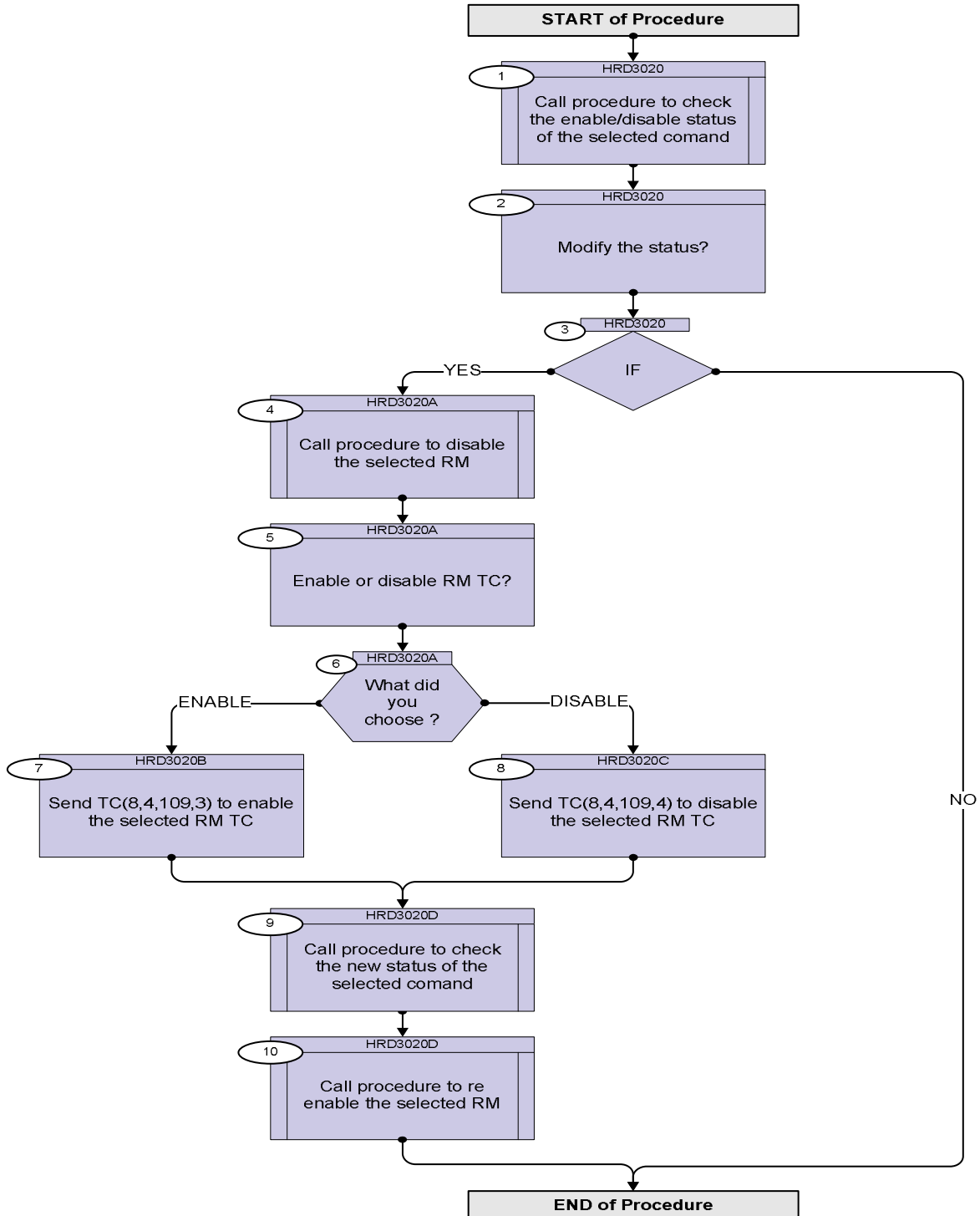
Configuration Control Information

DATE	FOP ISSUE	VERSION	MODIFICATION DESCRIPTION	AUTHOR	SPR REF
28/01/08	1	1	Created	cmevi-hp	
08/12/08	2	2	DB check against OBSW 3_6_2	S. Manganelli	

Enable or disable RM CPDU TC
 File: H_CRP_DHS_3020.xls
 Author: S. Manganelli



Procedure Flowchart Overview



Enable or disable RM CPDU TC
 File: H_CRP_DHS_3020.xls
 Author: S. Manganelli



Step No.	Time	Activity/Remarks	TC/TLM	Display/ Branch
Beginning of Procedure				
HRD3020 Check status				
SSID :				
1		Call procedure to check the enable/disable status of the selected comand		Next Step: 2
		<p>In the called procedure, at step 2 it is necessary to choose the CROME ID and the CROME Register Address.</p> <p>Two registers, depending on the CPDU TC #, must be read (and thus the called procedure has to run twice):</p> <ul style="list-style-type: none"> - RMH Pulse Mask Clear Register 0 [31:0] (0700_5B00) and RMH Pulse Mask Set Register 0 [31:0] (0700_5B40) - RMH Pulse Mask Clear Register 0 [63:32] (0700_5B04) and RMH Pulse Mask Set Register 0 [63:32] (0700_5B44) - RMH Pulse Mask Clear Register 0 [95:64] (0700_5B08) and RMH Pulse Mask Set Register 0 [95:64] (0700_5B48) 		
		Execute procedure H_FCP_DHS_3010.		
2		Modify the status?		Next Step: 3
3		IF		Next Step: YES 4 NO END
HRD3020A Disable selected RM.				
SSID :				
4		Call procedure to disable the selected RM		Next Step: 5
		<p>In the called procedure, at step 3 choose "DISABLE" and then at step 10 choose the RM according to the one selected at step 1 of this procedure.</p>		
		Execute procedure H_CRP_DHS_3011.		
5		Enable or disable RM TC?		Next Step: 6
6		What did you choose ?		Next Step: ENABLE 7 DISABLE 8

Enable or disable RM CPDU TC
 File: H_CRP_DHS_3020.xls
 Author: S. Manganelli



Step No.	Time	Activity/Remarks	TC/TLM	Display/ Branch
TC Seq. Name :HRD3020B (Enable RM TC.) TimeTag Type: N Sub Schedule ID: <input type="checkbox"/>				
7		Send TC(8,4,109,3) to enable the selected RM TC		Next Step: 9
		In the TC(8,4,109,3) it is necessary to set the following parameters: - RM ID (according to the one selected at step 1 of this procedure) 1 = RM A 2 = RM B - CPDU command (13-71)		
		Execute Telecommand <div style="text-align: right; margin-right: 100px;">EnblCmd</div> Command Parameter(s) : <div style="display: flex; justify-content: space-between; margin-left: 100px;"> <div>RmId</div> <div>DH093170</div> <div>RMID</div> </div> <div style="display: flex; justify-content: space-between; margin-left: 100px;"> <div>CpduCmdId</div> <div>DH130170</div> <div>CPDUTC</div> </div> TC Control Flags : <div style="display: flex; justify-content: space-between; margin-left: 100px;"> <div>GBM IL DSE</div> <div>--Y -- YYY</div> </div> SSID : 10	DCT57170	
TC Seq. Name :HRD3020C (Disable RM TC.) TimeTag Type: N Sub Schedule ID: <input type="checkbox"/>				
8		Send TC(8,4,109,4) to disable the selected RM TC		Next Step: 9
		In the TC(8,4,109,4) it is necessary to set the following parameters: - RM ID (according to the one selected at step 1 of this procedure) 1 = RM A 2 = RM B - CPDU command (13-71)		

Enable or disable RM CPDU TC
 File: H_CRP_DHS_3020.xls
 Author: S. Manganelli



Step No.	Time	Activity/Remarks	TC/TLM	Display/ Branch
		Execute Telecommand DisblCmd <i>Command Parameter(s) :</i> RmId DH093170 RMID CpduCmdId DH130170 CPDUTC <i>TC Control Flags :</i> GBM IL DSE --Y -- YYY SSID : 10	DCT58170	
HRD3020D Check status.				
SSID :				
9		Call procedure to check the new status of the selected comand		Next Step: 10
		In the called procedure, at step 2 it is necessary to choose the CROME ID and the CROME Register Address according to the ones selected in step 1 of this procedure.		
		Execute H_FCP_DHS_3010.		
10		Call procedure to re enable the selected RM		Next Step: END
		In the called procedure, at step 3 choose "ENABLE" and then at step 4 choose the RM according to the one selected at step 1 of this procedure.		
		Execute procedure H_CRP_DHS_3011.		
End of Procedure				