

Start or stop Lou Baffle management  
 File: H\_CRP\_DHS\_3007.xls  
 Author: S. Manganelli



## Procedure Summary

### Objectives

This procedure describes the steps needed to switch ON or OFF the ASW function "Lou Baffle Management".

### Summary of Constraints

Default status of the function: "Started".

Note that by default the function is enabled, but the controlling is disabled.

When the function is stopped, it does not accept any other telecommands than the:

- Start Function TC(8,1,118);
- Report Function Status TC(8,5,118).

### Spacecraft Configuration

#### Start of Procedure

- CDMU in default configuration, that is:
- PM A or B ON (nominally A)
  - TM Encoder/OBT A or B active (nominally A)
  - RM A and B enabled
  - MM A and B ON

#### End of Procedure

- CDMU in default configuration, that is:
- PM A or B ON (nominally A)
  - TM Encoder/OBT A or B active (nominally A)
  - RM A and B enabled
  - MM A and B ON

### Reference File(s)

#### Input Command Sequences

#### Output Command Sequences

HRD3007A  
 HRD3007B

### Referenced Displays

**ANDs**      **GRDs**      **SLDs**  
 ZAZAI999

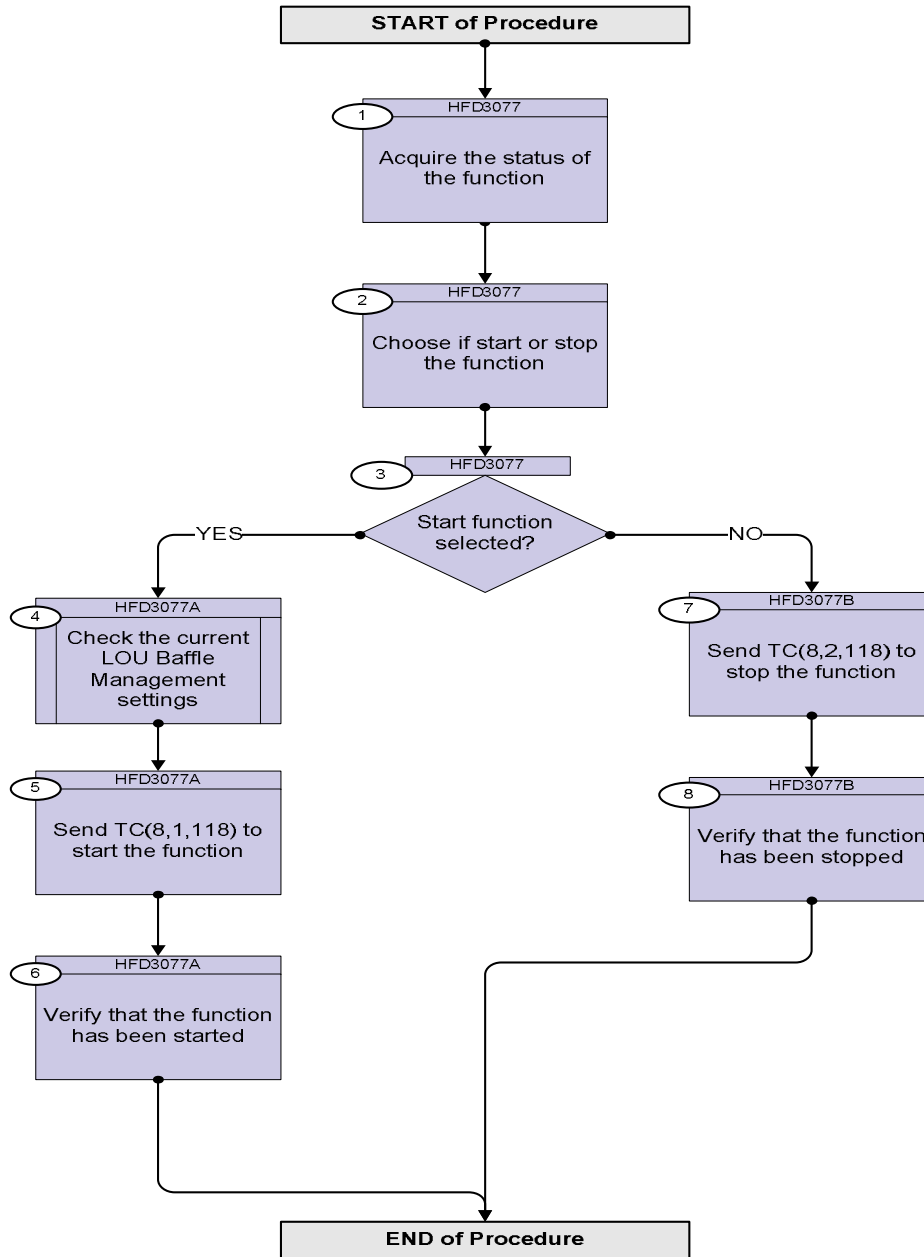
### Configuration Control Information

DATE	FOP ISSUE	VERSION	MODIFICATION DESCRIPTION	AUTHOR	SPR REF
23/03/09	2.2	1	Created	S. Manganelli	

Start or stop Lou Baffle management  
File: H\_CRP\_DHS\_3007.xls  
Author: S. Manganelli



### Procedure Flowchart Overview



Start or stop Lou Baffle management  
 File: H\_CRP\_DHS\_3007.xls  
 Author: S. Manganelli



Step No.	Time	Activity/Remarks	TC/TLM	Display/ Branch
<b>Beginning of Procedure</b>				
TC Seq. Name :HRD3007 (Lou Baffle managemen)  TimeTag Type: Sub Schedule ID:  <input type="checkbox"/>				
1		Acquire the status of the function		Next Step: 2
		Verify Telemetry  LbSts DEN66170		AND=ZAZAI999
2		Choose if start or stop the function		Next Step: 3
3		Start function selected?		Next Step: YES 4 NO 7
TC Seq. Name :HRD3007A (Start LouB funct)  TimeTag Type: Sub Schedule ID:  <input type="checkbox"/>				
4		Check the current LOU Baffle Management settings		Next Step: 5
		Execute procedure H_FCP_DHS_3078.		
5		Send TC(8,1,118) to start the function		Next Step: 6
		<b>Start Lou Baffle Management telecommand is used for switching ON the function.</b>		
		Execute Telecommand Start_LouBaffle_Manag DCP01170  TC Control Flags : GBM IL DSE --Y -- ---  Subsch. ID : 10 Det. descr. : Start LouBaffle Management TC(8,1,118)		
6		Verify that the function has been started		Next Step: END
		Verify Telemetry  LbSts DEN66170	= Running	AND=ZAZAI999

Start or stop Lou Baffle management  
 File: H\_CRP\_DHS\_3007.xls  
 Author: S. Manganelli



Step No.	Time	Activity/Remarks	TC/TLM	Display/ Branch
<p><i>TC Seq. Name :HRD3007B (Stop LouB funct)</i></p> <p><i>TimeTag Type:</i>  <i>Sub Schedule ID:</i></p> <p>□</p>				
7		Send TC(8,2,118) to stop the function		Next Step: 8
		<p><b>Stop Lou Baffle Management telecommand is used for switching OFF the function.</b></p> <p><b>When the function is stopped, it does not accept any other telecommands than the Start Function and Report Function Status TCs.</b></p>		
		<p>Execute Telecommand</p> <p style="text-align: right;"><b>Stop_LouBaffle_Manag</b></p> <p><i>TC Control Flags :</i></p> <p style="text-align: right;">GBM IL DSE --Y -- --</p> <p><i>Subsch. ID : 10</i>  <i>Det. descr. : Stop LouBaffle Management TC(8,2,118)</i></p>	DCP02170	
8		Verify that the function has been stopped		Next Step: END
		<p>Verify Telemetry</p> <p style="text-align: right;"><b>LbSts                    DEN66170</b></p> <p style="text-align: right;"><b>= Stopped</b></p>		AND=ZAZAI999
<b>End of Procedure</b>				