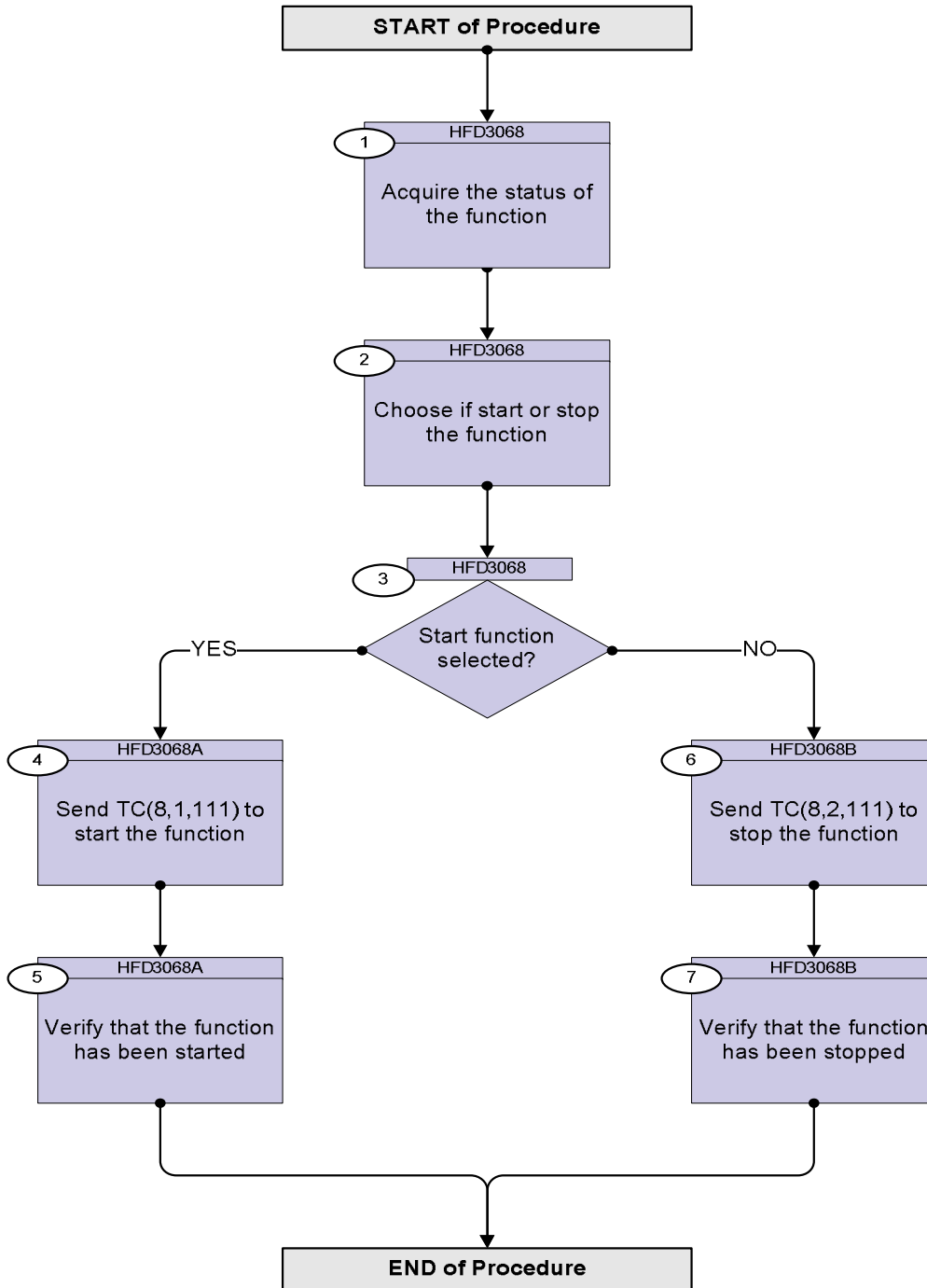




Start or stop the whole payload function  
File: H\_CRP\_DHS\_3006.xls  
Author: S. Manganelli



### Procedure Flowchart Overview



Start or stop the whole payload function  
 File: H\_CRP\_DHS\_3006.xls  
 Author: S. Manganelli



Step No.	Time	Activity/Remarks	TC/TLM	Display/ Branch
<b>Beginning of Procedure</b>				
TC Seq. Name :HRD3006 (Acquire status)  TimeTag Type: Sub Schedule ID:  <input type="checkbox"/>				
1		Acquire the status of the function		Next Step: 2
		Verify Telemetry  PmSts DEH47170		(None)
2		Choose if start or stop the function		Next Step: 3
3		Start function selected?		Next Step: YES 4 NO 6
TC Seq. Name :HRD3006A (Start function)  TimeTag Type: Sub Schedule ID:  <input type="checkbox"/>				
4		Send TC(8,1,111) to start the function		Next Step: 5
		<b>Start Payload Management telecommand is used for switching ON the function.</b>		
		Execute Telecommand  StartPayloadManag  TC Control Flags :  Subsch. ID : 10 Det. descr. : Start Payload Management TC(8,1,111)  GBM IL DSE --Y -- --	DC10M170	
5		Verify that the function has been started		Next Step: END
		Verify Telemetry  PmSts DEH47170	= Running	(None)

Start or stop the whole payload function  
 File: H\_CRP\_DHS\_3006.xls  
 Author: S. Manganelli



Step No.	Time	Activity/Remarks	TC/TLM	Display/ Branch
<p><i>TC Seq. Name :HRD3006B (Stop function)</i></p> <p><i>TimeTag Type:</i>  <i>Sub Schedule ID:</i></p> <p style="text-align: center;">□</p>				
6		Send TC(8,2,111) to stop the function		Next Step: 7
		<p><b>Stop Payload Management telecommand is used for switching OFF the function.</b></p> <p><b>When the function is stopped, it does not accept any other telecommands than the Start Function and Report Function Status TCs.</b></p>		
		<p>Execute Telecommand</p> <p style="text-align: right;">StopPayloadManag</p> <p><i>TC Control Flags :</i></p> <p style="text-align: right;">GBM IL DSE --Y -- ---</p> <p><i>Subsch. ID : 10</i>  <i>Det. descr. : Stop Payload Management TC(8,2,111)</i></p>	DC11M170	
7		Verify that the function has been stopped		Next Step: END
		<p>Verify Telemetry</p> <p style="text-align: center;">PmSts                      DEH47170</p> <p style="text-align: center;">= Stopped</p>	= Stopped	(None)
<b>End of Procedure</b>				