

AIR Event Action entry management  
 File: H\_CRP\_DHS\_1008.xls  
 Author: S. Manganelli



**Procedure Summary**

**Objectives**

To enable or disable both the EAT action TCs related to the ACC AIR signals

**Summary of Constraints**

EAT function must be running

**Spacecraft Configuration**

**Start of Procedure**

Any

**End of Procedure**

The EAT action TC related to AIR N and AIR R have been either enabled or disabled

**Reference File(s)**

**Input Command Sequences**

**Output Command Sequences**

HRD1008X  
 HRD1008A  
 HRD1008B  
 HRD1008Y

**Referenced Displays**

ANDs GRDs SLDs

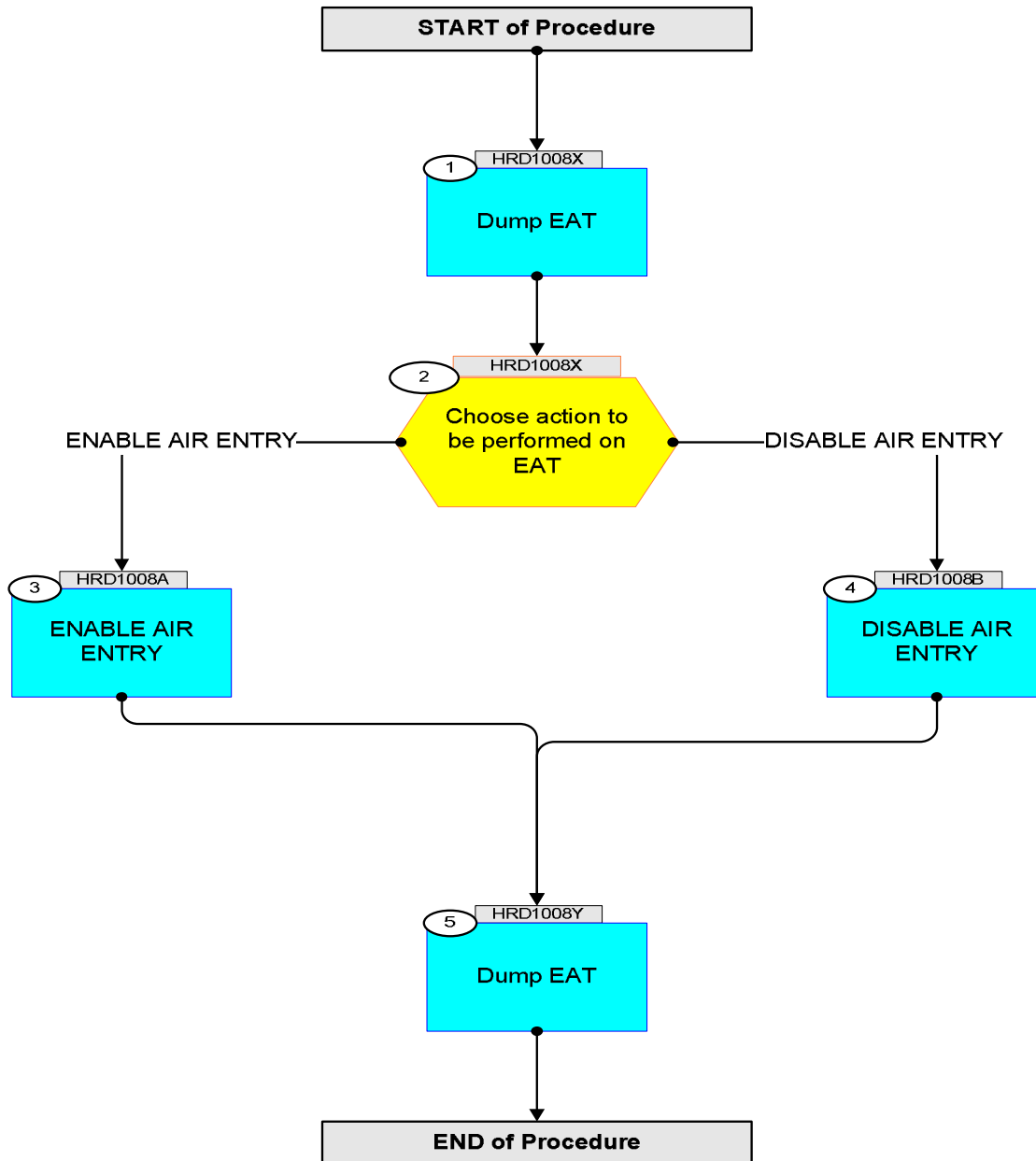
**Configuration Control Information**

DATE	FOP ISSUE	VERSION	MODIFICATION DESCRIPTION	AUTHOR	SPR REF
23/08/2010	3.1	1	Created	S. Manganelli	

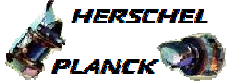

AIR Event Action entry management  
File: H\_CRP\_DHS\_1008.xls  
Author: S. Manganelli



### Procedure Flowchart Overview



AIR Event Action entry management  
 File: H\_CRP\_DHS\_1008.xls  
 Author: S. Manganelli

Step No.	Time	Activity/Remarks	TC/TLM	Display/ Branch	AIT Comment
<b>Beginning of Procedure</b>					
HRD1008X TC Seq. Name :HRD1008X ( Acquire EAT status ) TimeTag Type: Sub Schedule ID: □					
1		Dump EAT		Next Step: 2	
		Execute Telecommand <b>ReptEvtActTable</b> TC Control Flags : <b>GBM IL DSE</b> <b>--Y -- ---</b> Subsch. ID : 10 Det. descr. : TEMPLATE Report The contents of the event/action table TC(19,6)	<b>DCT86170</b>	<b>TC</b>	
		Verify reception of a number of packets: TM 19-7 Event-Action Table Content Report Packet Mnemonic : EvtActTblRpt APID : 16 Type : 19 Subtype : 7 PI1 : PI2 :			
		A dedicated event shall indicate the end of the EAT dump.			
		Verify Packet Reception CdmuAsw Event 5-1 TM 19-7 Dump Ended Packet Mnemonic : D_EvRp_168 APID : 16 Type : 5 Subtype : 1 PI1 : 27650 PI2 : 0			
		The EAT display shall now refresh and can be used to verify the status of the two AIR entries. The main features of the two entries are shown in the EAT model as follows : TC ID Description Apid EventID Rank DCN20170 FdirAccAlarm 16 37888 1 DCN20170 FdirAccAlarm 16 37889 2 The hex event IDs are 0x9400 and 0x9401 respectively. Note that both events are generated by MOT, on the monitoring of the AIR_N and AIR_R parameters respectively.			
		The EAT model displays the status of the AIR entries, under both sides of the column "Action" (E=enabled D=disabled N=not initialized in model) The left side is updated by TC, the second by the reception of TM. An enabled entry may be shown as N/E or E/E A disabled entry may be shown as N/D or D/D			

AIR Event Action entry management  
 File: H\_CRP\_DHS\_1008.xls  
 Author: S. Manganelli



Step No.	Time	Activity/Remarks	TC/TLM	Display/ Branch	AIT Comment
2		Choose action to be performed on EAT type: [Switch]		Next Step: ENABLE AIR ENTRY 3 DISABLE AIR ENTRY 4	
End of Sequence					
HRD1008A TC Seq. Name :HRD1008A ( Enable AIR in EAT )  TimeTag Type: Sub Schedule ID:  <input type="checkbox"/>					
3		ENABLE AIR ENTRY		Next Step: 5	
		Execute Telecommand <p style="text-align: right;"><b>EnableActions</b></p> Command Parameter(s) : N_Repetition          DH041170    2 <dec> APID_for_EAT_TC      DH236170    CDMS (Def) EventId          DH146170    37888 <dec> APID_for_EAT_TC      DH236170    CDMS (Def) EventId          DH146170    37889 <dec>  TC Control Flags : <p style="text-align: right;">GBM IL DSE --Y -- ---</p> Subsch. ID : 10 Det. descr. : TEMPLATE Enable Actions TC(19,4)	DCT84170	TC	
End of Sequence					
HRD1008B TC Seq. Name :HRD1008B ( Disable AIR in EAT )  TimeTag Type: Sub Schedule ID:  <input type="checkbox"/>					
4		DISABLE AIR ENTRY		Next Step: 5	
		Execute Telecommand <p style="text-align: right;"><b>DisableActions</b></p> Command Parameter(s) : N_Repetition          DH041170    2 <dec> APID_for_EAT_TC      DH236170    CDMS (Def) EventId          DH146170    37888 <dec> APID_for_EAT_TC      DH236170    CDMS (Def) EventId          DH146170    37889 <dec>  TC Control Flags : <p style="text-align: right;">GBM IL DSE --Y -- ---</p> Subsch. ID : 10 Det. descr. : TEMPLATE Disable Actions TC(19,5)	DCT85170	TC	
End of Sequence					
HRD1008Y TC Seq. Name :HRD1008Y ( Acquire EAT status )  TimeTag Type: Sub Schedule ID:  <input type="checkbox"/>					

AIR Event Action entry management  
 File: H\_CRP\_DHS\_1008.xls  
 Author: S. Manganelli




Step No.	Time	Activity/Remarks	TC/TLM	Display/ Branch	AIT Comment
5		Dump EAT		Next Step: END	
		Execute Telecommand  ReptEvtActTable  TC Control Flags :  GEM IL DSE --Y -- ---  Subsch. ID : 10 Det. descr. : TEMPLATE Report The contents of the event/action table TC(19,6)	DCT86170	TC	
		Verify reception of a number of packets:  TM 19-7 Event-Action Table Content Report Packet Mnemonic : EvtActTblRpt APID : 16 Type : 19 Subtype : 7 PI1 : PI2 :			
		A dedicated event shall indicate the end of the EAT dump.			
		Verify Packet Reception  CdmuAsw Event 5-1 TM 19-7 Dump Ended Packet Mnemonic : D_EvRp_168 APID : 16 Type : 5 Subtype : 1 PI1 : 27650 PI2 : 0			
		Verify that the EAT model displays the updated status of the AIR entries, under both sides of the column "Action" (E=enabled D=disabled) The left side is updated by TC, the second by the reception of TM. An enabled entry should be shown as E/E, a disabled entry by D/D.			
End of Sequence					
<b>End of Procedure</b>					