

Start/stop Payload management function
 File: H_CRP_CCU_MANG.xls
 Author: E. Picallo



Procedure Summary

Objectives

This procedure describes the steps needed to switch ON or OFF the ASW function "Payload Management".

It handles the controlling of the CCU.

Summary of Constraints

Default status of the function: "Started".

When the function is stopped, it does not accept any other telecommands than the:

- Start Function TC(8,1,111);
- Report Function Status TC(8,5,111).

Spacecraft Configuration

Start of Procedure

- CDMU in default configuration, that is:
- PM A or B ON (nominally A)
 - TM Encoder/OBT A or B active (nominally A)
 - RM A and B enabled
 - MM A and B ON

End of Procedure

- CDMU in default configuration, that is:
- PM A or B ON (nominally A)
 - TM Encoder/OBT A or B active (nominally A)
 - RM A and B enabled
 - MM A and B ON

Reference File(s)

Input Command Sequences

Output Command Sequences

HRKMANG1
 HRKMANG2

Referenced Displays

ANDs GRDs SLDs
 ZAZ28999

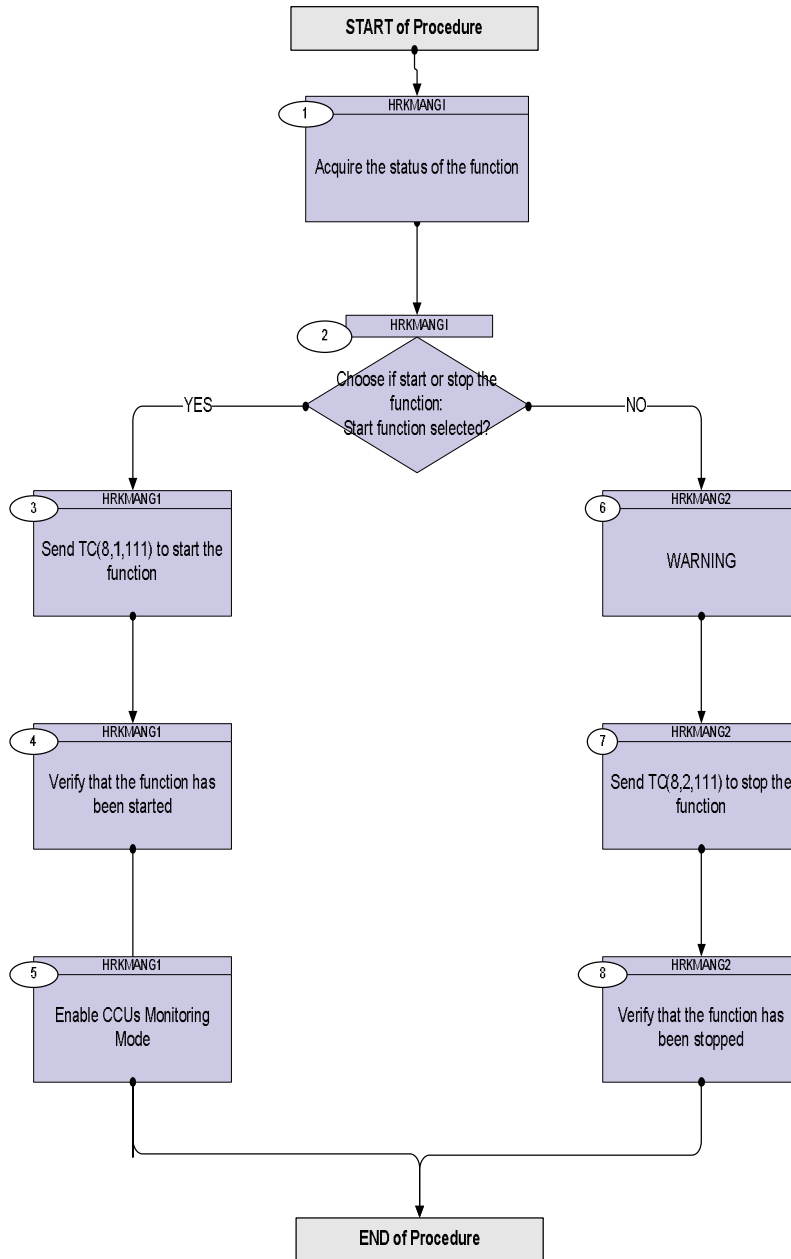
Configuration Control Information

DATE	FOP ISSUE	VERSION	MODIFICATION DESCRIPTION	AUTHOR	SPR REF
31/07/08	1	1	Created	E. Picallo	
26/11/08	2	2	display mode	E. Picallo	

Start/stop Payload management function
File: H_CRP_CCU_MANG.xls
Author: E. Picallo



Procedure Flowchart Overview



Start/stop Payload management function
 File: H_CRP_CCU_MANG.xls
 Author: E. Picallo



Step No.	Time	Activity/Remarks	TC/TLM	Display/ Branch
Beginning of Procedure				
TC Seq. Name : HRKMANGI (Start/StopPayloadMgmt) Start or stop the Payload management function TimeTag Type: N Sub Schedule ID: <input type="checkbox"/>				
1		Acquire the status of the function		Next Step: 2
		Verify Telemetry PmSts DEH47170		AND=ZAZ28999
2		Choose if start or stop the function: Start function selected?		Next Step: YES 3 NO 6
		Warning: If the function is running sending the TC "Start Payload Management" will cause a TC Acceptance failure TM(1,2) "Function Already Started".		
		Warning: If the function is Stopped sending the TC "Stop Payload Management" will cause a TC Acceptance failure TM(1,2) "Function Already Stopped".		
TC Seq. Name : HRKMANG1 (Start Payload Mgmt) TimeTag Type: Sub Schedule ID: <input type="checkbox"/>				
3		Send TC(8,1,111) to start the function		Next Step: 4
		Start Payload Management telecommand is used for switching on the function.		
		Execute Telecommand StartPayloadManag TC Control Flags : GBM IL DSE --Y -- -- Subsch. ID : 10 Det. descr. : Start Payload Management TC(8,1,111)	DC10M170	
4		Verify that the function has been started		Next Step: 5

Start/stop Payload managment function
 File: H_CRP_CCU_MANG.xls
 Author: E. Picallo



Step No.	Time	Activity/Remarks	TC/TLM	Display/ Branch
		Verify Telemetry PmSts DEH47170	= Running	AND=ZAZ28999
		WARNING CCUs Monitoring status remains DISABLED after the payload management funtion has been re-started.		
5		Enable CCUs Monitoring Mode		Next Step: END
		To resume the CCUs monitoring, set CCU A and CCU B in monitoring mode for routine monitoring (period 512s) or Recycling/decontamination (period 8 sec)		
		Execute Procedure: H_FCP_CCU_ACQP CCU acquisition period update		
<p>TC Seq. Name :HRKMANG2 (Stop Payload Mgmt)</p> <p>TimeTag Type: Sub Schedule ID: □</p>				
6		WARNING		Next Step: 7
		Stopping the Payload Management function sets the CCU A and CCU B monitoring status to DISABLED. i.e The CCUs DO NOT perform new sensor readings.		
7		Send TC(8,2,111) to stop the function		Next Step: 8
		Stop Payload Management telecommand is used for switching off the function. When the function is stopped, it does not accept any other telecommands than the Start Function and Report Function Status TCs.		
		Execute Telecommand StopPayloadManag TC Control Flags : GBM IL DSE ---Y --- Subsch. ID : 10 Det. descr. : Stop Payload Management TC(8,2,111)	DC11M170	
8		Verify that the function has been stopped		Next Step: END

Start/stop Payload managment function File: H_CRP_CCU_MANG.xls Author: E. Picallo	 
---	--

Step No.	Time	Activity/Remarks	TC/TLM	Display/ Branch
		Verify Telemetry PmSts DEH47170	= Stopped	AND=ZAZ28999
End of Procedure				