

SAS Nominal reconfiguration
File: H_CRP_AOC_7NRC.xls
Author: dsalt-hp



Procedure Summary

Objectives

The objective of this Herschel ACMS contingency procedure is to enable an SAS Nominal reconfiguration.

The procedure involves the following activities:

- check ACMS mode & RCS status
- check SAS health & configuration
- disable FCV Armed check, if necessary
- disable RMA
- modify SAS Nominal configuration in RMA, as necessary
- enable RMA
- disable RMB
- modify SAS Nominal configuration in RMB, as necessary
- enable RMB
- enable FCV Armed check, if necessary

Summary of Constraints

Procedure execution has been authorised by SOM

Spacecraft Configuration

Start of Procedure

Spacecraft in any nominal ACMS mode (SAM/OCM/SCM) with an undesired SAS Nominal configuration

End of Procedure

Spacecraft in any nominal ACMS mode (SAM/OCM/SCM) with the desired SAS Nominal configuration

Reference File(s)

Input Command Sequences

Output Command Sequences

HRA7NRCA
HRA7NRCB
HRA7NRCC
HRA7NRCD
HRA7NRCE
HRA7NRCE
HRA7NRCF
HRA7NRCCG
HRA7NRCH
HRA7NRCI
HRA7NRCJ
HRA7NRCK
HRA7NRCL
HRA7NRCM
HRA7NRCCN
HRA7NRCCO
HRA7NRCCP
HRA7NRCCQ
HRA7NRCCR
HRA7NRCCS
HRA7NRCCCT
HRA7NRCCCU
HRA7NRCCCV

SAS Nominal reconfiguration
 File: H_CRP_AOC_7NRC.xls
 Author: dsalt-hp



Referenced Displays

ANDs	GRDs	SLDs
ZAA01999		
ZAA02999		
ZAA06999		
ZAA07999		
ZAAM0999		

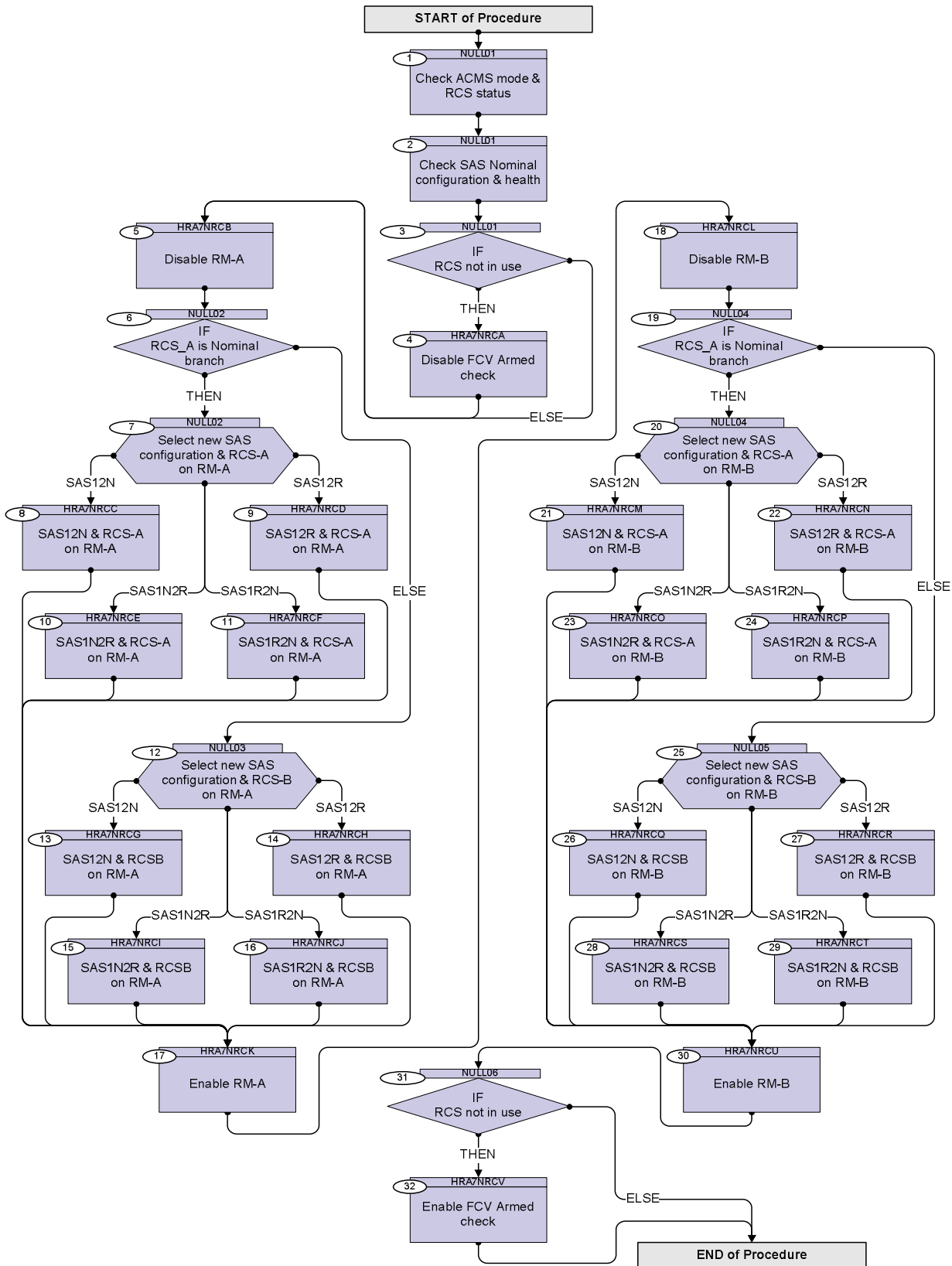
Configuration Control Information

DATE	FOP ISSUE	VERSION	MODIFICATION DESCRIPTION	AUTHOR	SPR REF
10/12/08	2	1	Created	dsalt-hp	

SAS Nominal reconfiguration
 File: H_CRP_AOC_7NRC.xls
 Author: dsalt-hp



Procedure Flowchart Overview



SAS Nominal reconfiguration
 File: H_CRP_AOC_7NRC.xls
 Author: dsalt-hp



Step No.	Time	Activity/Remarks	TC/TLM	Display/ Branch
Beginning of Procedure				
TC Seq. Name : NULL01 (Null Sequence 01)				
TimeTag Type: N				
Sub Schedule ID:				
□				
1		Check ACMS mode & RCS status		Next Step: 2
1.1		Check ACMS mode		□
		Verify Telemetry AcmsMode AESMG002	= OCM = SAM = SCM	AND=ZAA01999
		Verify Telemetry AcmsSubstate AESMF002	= OCM Pointing = SAM Sun Point = SCM Pointing	AND=ZAA01999
		Verify Telemetry AcmsMain AID AESM3002	= OCM pnt coarse = SAM pnt coarse = SCM Point Fine	AND=ZAA01999
1.2		Check RCS status		□
		Verify Telemetry Nom Conf RCS AESCF002	= RCS-A = RCS-B	AND=ZAA01999
		Note the RCS branch in-use as this will enable the selection of the subsequent branches of this procedure.		
2		Check SAS Nominal configuration & health		Next Step: 3
2.1		Check SAS Nominal configuration		□
		Verify Telemetry Nom Conf SAS AESCB002	= SAS1 N SAS2 R = SAS1 R SAS2 N = SAS12 N = SAS12 R	AND=ZAA01999
2.2		Check SAS health		□

SAS Nominal reconfiguration
 File: H_CRP_AOC_7NRC.xls
 Author: dsalt-hp



Step No.	Time	Activity/Remarks	TC/TLM	Display/ Branch
		Verify Telemetry SAS1N Hlth Sts AESK5002	= Healthy = Unhealthy	AND=ZAA02999
		Verify Telemetry SAS1R Hlth Sts AESK6002	= Healthy = Unhealthy	AND=ZAA02999
		Verify Telemetry SAS2N Hlth Sts AESK7002	= Healthy = Unhealthy	AND=ZAA02999
		Verify Telemetry SAS2R Hlth Sts AESK8002	= Healthy = Unhealthy	AND=ZAA02999
		Note the <u>SAS health status</u> as this will enable the selection of the subsequent branches of this procedure.		
3		IF RCS not in use		Next Step: THEN 4 ELSE 5
TC Seq. Name : HRA7NRCA (Disable FCV Arm Chk) TimeTag Type: Sub Schedule ID: <input type="checkbox"/>				
4		Disable FCV Armed check		Next Step: 5
		Execute Telecommand DisChkHealtyRCS FID 141 Command Parameter(s) : DisChk DF86Cmd AH8C1001 DisChk DD86Cmd AH8C2001 TC Control Flags : GBM IL DSE --Y -- -- Subsch. ID : 20 Det. descr. : TC(8,1) - Disable Command check- DisChkHealtyRCS FID 141	ACY9B109 Enable 86 Enable 86	

SAS Nominal reconfiguration
 File: H_CRP_AOC_7NRC.xls
 Author: dsalt-hp



Step No.	Time	Activity/Remarks	TC/TLM	Display/ Branch
		Execute Telecommand Fire Disable Check Command Parameter(s) : FireFun DF86Cmd AH8F1001 Enable 86 FireFun DD86Cmd AH8F2001 Enable 86 TC Control Flags : GBM IL DSE --Y -- --- Subsch. ID : 20 Det. descr. : TC(8,4) Fire Command - Fire Disable Check	ACZ7M109	
		Verify Telemetry RCS arm sts chk AES4K001	= Disabled	AND-ZAA06999
TC Seq. Name :HRA7NRCB (Disable RMA) TimeTag Type: Sub Schedule ID: <input type="checkbox"/>				
5		Disable RM-A		Next Step: 6
		Execute Telecommand Ext_ACC_RM_A_Disable TC Control Flags : GBM IL DSE --Y -- --- Subsch. ID : 10 Det. descr. : External ACC RM A Disable - Mission Specific	DCM22170	
		Verify Telemetry RMA_fromTTR-RMA AEE91050	= DISABLED	AND-ZAA07999
		Verify Telemetry RMB_fromTTR-RMA AEE93050	= DISABLED	AND-ZAA07999
TC Seq. Name :NULL02 (Null Sequence 02) TimeTag Type: Sub Schedule ID: <input type="checkbox"/>				
6		IF RCS_A is Nominal branch		Next Step: THEN 7 ELSE 12

SAS Nominal reconfiguration
 File: H_CRP_AOC_7NRC.xls
 Author: dsalt-hp



Step No.	Time	Activity/Remarks	TC/TLM	Display/ Branch
7		Select new SAS configuration & RCS-A on RM-A		Next Step: SAS12N 8 SAS12R 9 SAS1N2R 10 SAS1R2N 11
TC Seq. Name :HRA7NRCC (SAS1N2N RCSA RMA) TimeTag Type: Sub Schedule ID: <input type="checkbox"/>				
8		SAS12N & RCS-A on RM-A		Next Step: 17
		Execute Telecommand <p style="text-align: right;">RMA_SAS1N-2N_CRSt_RCSA</p> Command Parameter(s) : NomConf DF86Cmd AH8N1001 Enable 86 NomConf DD86Cmd AH8N2001 Enable 86 TC Control Flags : <p style="text-align: right;">GBM IL DSE --Y -- --</p> Subsch. ID : 20 Det. descr. : TC(8,1) Mod Nom Conf - RMA_SAS1N-2N_CRSt_RCSA	ACY60109	
		<u>Now get the RM status to verify the commanded configuration</u>		
		Execute Telecommand <p style="text-align: right;">Get RM-A status</p> Command Parameter(s) : RMStat DF86Cmd AH841001 Enable 86 RMStat DD86Cmd AH842001 Enable 86 TC Control Flags : <p style="text-align: right;">GBM IL DSE --Y -- --</p> Subsch. ID : 20 Det. descr. : TC(8,1) - Get RM-A status	ACZZ4109	
		Verify Packet Reception <p style="text-align: right;">TM 8-6 for RM Status parametrized</p> Packet Details: <p style="text-align: right;">APID: 512 Type: 8 Subtype: 6 PI1: 41600 PI2: 1</p>	A86_RMStatus	
		Verify Telemetry <p style="text-align: right;">Nom Conf SAS1 AEW2R109</p>	= NOMINAL	AND=ZAAM0999

SAS Nominal reconfiguration
 File: H_CRP_AOC_7NRC.xls
 Author: dsalt-hp



Step No.	Time	Activity/Remarks	TC/TLM	Display/ Branch
		Verify Telemetry Nom Conf SAS2 AEW2S109	= NOMINAL	AND=ZAAM0999
		Verify Telemetry Nom Conf RCS AEW2U109	= RCS-A	AND=ZAAM0999
<p>TC Seq. Name :HRA7NRC D (SAS1R2R RCSA RMA)</p> <p>TimeTag Type: Sub Schedule ID: □</p>				
9		SAS12R & RCS-A on RM-A		Next Step: 17
		Execute Telecommand RMA_SAS1R-2R_CRSx_RCSA Command Parameter(s) : NomConf DF86Cmd AH8N1001 NomConf DD86Cmd AH8N2001 TC Control Flags : GBM IL DSE --Y -- --- Subsch. ID : 20 Det. descr. : TC(8,1) Mod Nom Conf - RMA_SAS1R-2R_CRSx_RCSA	ACY63109 Enable 86 Enable 86	
		Now get the RM status to verify the commanded configuration		
		Execute Telecommand Get RM-A status Command Parameter(s) : RMStat DF86Cmd AH841001 RMStat DD86Cmd AH842001 TC Control Flags : GBM IL DSE --Y -- --- Subsch. ID : 20 Det. descr. : TC(8,1) - Get RM-A status	ACZZ4109 Enable 86 Enable 86	
		Verify Packet Reception TM 8-6 for RM Status parametrized Packet Details: APID: 512 Type: 8 Subtype: 6 PI1: 41600 PI2: 1	A86_RMStatus	
		Verify Telemetry Nom Conf SAS1 AEW2R109	= REDUNDANT	AND=ZAAM0999

SAS Nominal reconfiguration
 File: H_CRP_AOC_7NRC.xls
 Author: dsalt-hp



Step No.	Time	Activity/Remarks	TC/TLM	Display/ Branch
		Verify Telemetry Nom Conf SAS2 AEW2S109	= REDUNDANT	AND=ZAAM0999
		Verify Telemetry Nom Conf RCS AEW2U109	= RCS-A	AND=ZAAM0999
<p>TC Seq. Name :HRA7NRCE (SAS1N2R RCSA RMA)</p> <p>TimeTag Type: Sub Schedule ID: □</p>				
10		SAS1N2R & RCS-A on RM-A		Next Step: 17
		Execute Telecommand RMA_SAS1N-2R_CRSx_RCSA Command Parameter(s) : NomConf DF86Cmd AH8N1001 NomConf DD86Cmd AH8N2001 TC Control Flags : GBM IL DSE --Y -- --- Subsch. ID : 20 Det. descr. : TC(8,1) Mod Nom Conf - RMA_SAS1N-2R_CRSx_RCSA	ACY61109 Enable 86 Enable 86	
		Now get the RM status to verify the commanded configuration		
		Execute Telecommand Get RM-A status Command Parameter(s) : RMStat DF86Cmd AH841001 RMStat DD86Cmd AH842001 TC Control Flags : GBM IL DSE --Y -- --- Subsch. ID : 20 Det. descr. : TC(8,1) - Get RM-A status	ACZZ4109 Enable 86 Enable 86	
		Verify Packet Reception TM 8-6 for RM Status parametrized Packet Details: APID: 512 Type: 8 Subtype: 6 PI1: 41600 PI2: 1	A86_RMStatus	
		Verify Telemetry Nom Conf SAS1 AEW2R109	= NOMINAL	AND=ZAAM0999

SAS Nominal reconfiguration
 File: H_CRP_AOC_7NRC.xls
 Author: dsalt-hp



Step No.	Time	Activity/Remarks	TC/TLM	Display/ Branch
		Verify Telemetry Nom Conf SAS2 AEW2S109	= REDUNDANT	AND=ZAAM0999
		Verify Telemetry Nom Conf RCS AEW2U109	= RCS-A	AND=ZAAM0999
<p>TC Seq. Name :HRA7NRCF (SAS1R2N RCSA RMA)</p> <p>TimeTag Type: Sub Schedule ID: □</p>				
11		SAS1R2N & RCS-A on RM-A		Next Step: 17
		Execute Telecommand RMA_SAS1R-2N_CRSt RCSA Command Parameter(s) : NomConf DF86Cmd AH8N1001 NomConf DD86Cmd AH8N2001 TC Control Flags : GBM IL DSE --Y -- --- Subsch. ID : 20 Det. descr. : TC(8,1) Mod Nom Conf - RMA_SAS1R-2N_CRSt RCSA	ACY62109 Enable 86 Enable 86	
		<u>Now get the RM status to verify the commanded configuration</u>		
		Execute Telecommand Get RM-A status Command Parameter(s) : RMStat DF86Cmd AH841001 RMStat DD86Cmd AH842001 TC Control Flags : GBM IL DSE --Y -- --- Subsch. ID : 20 Det. descr. : TC(8,1) - Get RM-A status	ACZZ4109 Enable 86 Enable 86	
		Verify Packet Reception TM 8-6 for RM Status parametrized Packet Details: APID: 512 Type: 8 Subtype: 6 PI1: 41600 PI2: 1	A86_RMStatus	
		Verify Telemetry Nom Conf SAS1 AEW2R109	= REDUNDANT	AND=ZAAM0999

SAS Nominal reconfiguration
 File: H_CRP_AOC_7NRC.xls
 Author: dsalt-hp



Step No.	Time	Activity/Remarks	TC/TLM	Display/ Branch
		Verify Telemetry Nom Conf SAS2 AEW2S109	= NOMINAL	AND=ZAAM0999
		Verify Telemetry Nom Conf RCS AEW2U109	= RCS-A	AND=ZAAM0999
<p>TC Seq. Name : NULL03 (Null Sequence 03)</p> <p>TimeTag Type: Sub Schedule ID:</p> <p>□</p>				
12		Select new SAS configuration & RCS-B on RM-A		Next Step: SAS12N 13 SAS12R 14 SAS12R 15 SAS12N 16
<p>TC Seq. Name : HRA7NRCG (SAS1N2N RCSB RMA)</p> <p>TimeTag Type: Sub Schedule ID:</p> <p>□</p>				
13		SAS12N & RCSB on RM-A		Next Step: 17
		Execute Telecommand RMA_SAS1N-2N_CRSx_RCSB Command Parameter(s) : NomConf DF86Cmd AH8N1001 Enable 86 NomConf DD86Cmd AH8N2001 Enable 86 TC Control Flags : GBM IL DSE --Y -- --- Subsch. ID : 20 Det. descr. : TC(8,1) Mod Nom Conf - RMA_SAS1N-2N_CRSx_RCSB	ACY64109	
		Now get the RM status to verify the commanded configuration		

SAS Nominal reconfiguration
 File: H_CRP_AOC_7NRC.xls
 Author: dsalt-hp



Step No.	Time	Activity/Remarks	TC/TLM	Display/ Branch
		Execute Telecommand <p style="text-align: right;">Get RM-A status</p> Command Parameter(s) : RMStat DF86Cmd AH841001 Enable 86 RMStat DD86Cmd AH842001 Enable 86 TC Control Flags : <p style="text-align: right;">GBM IL DSE --Y -- ---</p> Subsch. ID : 20 Det. descr. : TC(8,1) - Get RM-A status	ACZZ4109	
		Verify Packet Reception <p style="text-align: center;">TM 8-6 for RM Status parametrized</p> Packet Details: <p style="text-align: right;">APID: 512 Type: 8 Subtype: 6 PI1: 41600 PI2: 1</p>	A86_RMStatus	
		Verify Telemetry <p style="text-align: center;">Nom Conf SAS1 AEW2R109</p>	= NOMINAL	AND=ZAAM0999
		Verify Telemetry <p style="text-align: center;">Nom Conf SAS2 AEW2S109</p>	= NOMINAL	AND=ZAAM0999
		Verify Telemetry <p style="text-align: center;">Nom Conf RCS AEW2U109</p>	= RCS-B	AND=ZAAM0999
TC Seq. Name :HRA7NRCH (SAS1R2R RCSB RMA) TimeTag Type: Sub Schedule ID: <input type="checkbox"/>				
14		SAS12R & RCSB on RM-A		Next Step: 17
		Execute Telecommand <p style="text-align: right;">RMA_SAS1R-2R_CRSx_RCSB</p> Command Parameter(s) : NomConf DF86Cmd AH8N1001 Enable 86 NomConf DD86Cmd AH8N2001 Enable 86 TC Control Flags : <p style="text-align: right;">GBM IL DSE --Y -- ---</p> Subsch. ID : 20 Det. descr. : TC(8,1) Mod Nom Conf - RMA_SAS1R-2R_CRSx_RCSB	ACY67109	
		Now get the RM status to verify the commanded configuration		

SAS Nominal reconfiguration
 File: H_CRP_AOC_7NRC.xls
 Author: dsalt-hp



Step No.	Time	Activity/Remarks	TC/TLM	Display/ Branch
		Execute Telecommand <p style="text-align: right;">Get RM-A status</p> Command Parameter(s) : RMStat DF86Cmd AH841001 Enable 86 RMStat DD86Cmd AH842001 Enable 86 TC Control Flags : <p style="text-align: right;">GBM IL DSE --Y -- ---</p> Subsch. ID : 20 Det. descr. : TC(8,1) - Get RM-A status	ACZZ4109	
		Verify Packet Reception <p style="text-align: center;">TM 8-6 for RM Status parametrized</p> Packet Details: <p style="text-align: right;">APID: 512 Type: 8 Subtype: 6 PI1: 41600 PI2: 1</p>	A86_RMStatus	
		Verify Telemetry <p style="text-align: center;">Nom Conf SAS1 AEW2R109</p>	= REDUNDANT	AND=ZAAM0999
		Verify Telemetry <p style="text-align: center;">Nom Conf SAS2 AEW2S109</p>	= REDUNDANT	AND=ZAAM0999
		Verify Telemetry <p style="text-align: center;">Nom Conf RCS AEW2U109</p>	= RCS-B	AND=ZAAM0999
TC Seq. Name :HRA7NRCI (SAS1N2R RCSB RMA) TimeTag Type: Sub Schedule ID: <input type="checkbox"/>				
15		SAS1N2R & RCSB on RM-A		Next Step: 17
		Execute Telecommand <p style="text-align: right;">RMA_SAS1N-2R_CRSx_RCSB</p> Command Parameter(s) : NomConf DF86Cmd AH8N1001 Enable 86 NomConf DD86Cmd AH8N2001 Enable 86 TC Control Flags : <p style="text-align: right;">GBM IL DSE --Y -- ---</p> Subsch. ID : 20 Det. descr. : TC(8,1) Mod Nom Conf - RMA_SAS1N-2R_CRSx_RCSB	ACY65109	
		Now get the RM status to verify the commanded configuration		

SAS Nominal reconfiguration
 File: H_CRP_AOC_7NRC.xls
 Author: dsalt-hp



Step No.	Time	Activity/Remarks	TC/TLM	Display/ Branch
		Execute Telecommand <p style="text-align: right;">Get RM-A status</p> Command Parameter(s) : RMStat DF86Cmd AH841001 Enable 86 RMStat DD86Cmd AH842001 Enable 86 TC Control Flags : <p style="text-align: right;">GBM IL DSE --Y -- ---</p> Subsch. ID : 20 Det. descr. : TC(8,1) - Get RM-A status	ACZZ4109	
		Verify Packet Reception <p style="text-align: center;">TM 8-6 for RM Status parametrized</p> Packet Details: <p style="text-align: right;">APID: 512 Type: 8 Subtype: 6 PI1: 41600 PI2: 1</p>	A86_RMStatus	
		Verify Telemetry <p style="text-align: center;">Nom Conf SAS1 AEW2R109</p>	= NOMINAL	AND=ZAAM0999
		Verify Telemetry <p style="text-align: center;">Nom Conf SAS2 AEW2S109</p>	= REDUNDANT	AND=ZAAM0999
		Verify Telemetry <p style="text-align: center;">Nom Conf RCS AEW2U109</p>	= RCS-B	AND=ZAAM0999
TC Seq. Name :HRA7NRCJ (SAS1R2N RCSB RMA) TimeTag Type: Sub Schedule ID: <input type="checkbox"/>				
16		SAS1R2N & RCSB on RM-A		Next Step: 17
		Execute Telecommand <p style="text-align: right;">RMA_SAS1R-2N_CRSx_RCSB</p> Command Parameter(s) : NomConf DF86Cmd AH8N1001 Enable 86 NomConf DD86Cmd AH8N2001 Enable 86 TC Control Flags : <p style="text-align: right;">GBM IL DSE --Y -- ---</p> Subsch. ID : 20 Det. descr. : TC(8,1) Mod Nom Conf - RMA_SAS1R-2N_CRSx_RCSB	ACY66109	
		Now get the RM status to verify the commanded configuration		

SAS Nominal reconfiguration
 File: H_CRP_AOC_7NRC.xls
 Author: dsalt-hp



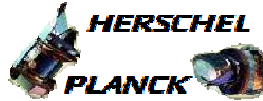
Step No.	Time	Activity/Remarks	TC/TLM	Display/ Branch
		Execute Telecommand <p style="text-align: right;">Get RM-A status</p> Command Parameter(s) : RMStat DF86Cmd AH841001 Enable 86 RMStat DD86Cmd AH842001 Enable 86 TC Control Flags : <p style="text-align: right;">GBM IL DSE --Y -- ---</p> Subsch. ID : 20 Det. descr. : TC(8,1) - Get RM-A status	ACZZ4109	
		Verify Packet Reception <p style="text-align: center;">TM 8-6 for RM Status parametrized</p> Packet Details: <p style="text-align: right;">APID: 512 Type: 8 Subtype: 6 PI1: 41600 PI2: 1</p>	A86_RMStatus	
		Verify Telemetry <p style="text-align: center;">Nom Conf SAS1 AEW2R109</p>	= REDUNDANT	AND=ZAAM0999
		Verify Telemetry <p style="text-align: center;">Nom Conf SAS2 AEW2S109</p>	= NOMINAL	AND=ZAAM0999
		Verify Telemetry <p style="text-align: center;">Nom Conf RCS AEW2U109</p>	= RCS-B	AND=ZAAM0999
TC Seq. Name :HRA7NRCK (Enable RMA) TimeTag Type: Sub Schedule ID: <input type="checkbox"/>				
17		Enable RM-A		Next Step: 18
		Execute Telecommand <p style="text-align: right;">Ext_ACC_RM_A_Enable</p> TC Control Flags : <p style="text-align: right;">GBM IL DSE --Y -- ---</p> Subsch. ID : 10 Det. descr. : External ACC RM A Enable - Mission Specific	DCM21170	
		Verify Telemetry <p style="text-align: center;">RMA_fromTTR-RMA AEE91050</p>	= ENABLED	AND=ZAA07999
		Verify Telemetry <p style="text-align: center;">RMB_fromTTR-RMA AEE93050</p>	= ENABLED	AND=ZAA07999

SAS Nominal reconfiguration
 File: H_CRP_AOC_7NRC.xls
 Author: dsalt-hp



Step No.	Time	Activity/Remarks	TC/TLM	Display/ Branch
<p><i>TC Seq. Name :HRA7NRCL (Disable RMB)</i></p> <p><i>TimeTag Type:</i> <i>Sub Schedule ID:</i></p> <p><input type="checkbox"/></p>				
18		Disable RM-B		Next Step: 19
		Execute Telecommand <p style="text-align: right;">Ext_ACC_RM_B_Disable</p> <p><i>TC Control Flags :</i></p> <p style="text-align: right;">GBM IL DSE --Y -- --</p> <p><i>Subsch. ID : 10</i> <i>Det. descr. : External ACC RM B Disable - Mission Specific</i></p>	DCM25170	
		Verify Telemetry <p style="text-align: center;">RMA_fromTTR-RMB AEE92050</p> <p style="text-align: center;">= DISABLED</p>		AND=ZAA07999
		Verify Telemetry <p style="text-align: center;">RMB_fromTTR-RMB AEE94050</p> <p style="text-align: center;">= DISABLED</p>		AND=ZAA07999
<p><i>TC Seq. Name :NULL04 (Null Sequence 04)</i></p> <p><i>TimeTag Type:</i> <i>Sub Schedule ID:</i></p> <p><input type="checkbox"/></p>				
19		<i>IF</i> <i>RCS_A is Nominal branch</i>		Next Step: THEN 20 ELSE 25
20		Select new SAS configuration & RCS-A on RM-B		Next Step: SAS12N 21 SAS12R 22 SAS1N2R 23 SAS1R2N 24
<p><i>TC Seq. Name :HRA7NRCM (SAS1N2N RCSA RMB)</i></p> <p><i>TimeTag Type:</i> <i>Sub Schedule ID:</i></p> <p><input type="checkbox"/></p>				
21		SAS12N & RCS-A on RM-B		Next Step: 30

SAS Nominal reconfiguration
 File: H_CRP_AOC_7NRC.xls
 Author: dsalt-hp



Step No.	Time	Activity/Remarks	TC/TLM	Display/ Branch
		Execute Telecommand RMB_SAS1N-2N_CRSx_RCSA Command Parameter(s) : NomConf DF86Cmd AH8N1001 Enable 86 NomConf DD86Cmd AH8N2001 Enable 86 TC Control Flags : GBM IL DSE --Y -- -- Subsch. ID : 20 Det. descr. : TC(8,1) Mod Nom Conf - RMB_SAS1N-2N_CRSx_RCSA	ACY68109	
		Now get the RM status to verify the commanded configuration		
		Execute Telecommand Get RM-B status Command Parameter(s) : RMStat DF86Cmd AH841001 Enable 86 RMStat DD86Cmd AH842001 Enable 86 TC Control Flags : GBM IL DSE --Y -- -- Subsch. ID : 20 Det. descr. : TC(8,1) - Get RM-B status	ACZZ5109	
		Verify Packet Reception TM 8-6 for RM Status parametrized Packet Details: APID: 512 Type: 8 Subtype: 6 PI1: 41600 PI2: 1	A86_RMStatus	
		Verify Telemetry Nom Conf SAS1 AEW2R109	= NOMINAL	AND=ZAAM0999
		Verify Telemetry Nom Conf SAS2 AEW2S109	= NOMINAL	AND=ZAAM0999
		Verify Telemetry Nom Conf RCS AEW2U109	= RCS-A	AND=ZAAM0999
TC Seq. Name :HRA7NRCN (SAS1R2R RCSA RMB) TimeTag Type: Sub Schedule ID: <input type="checkbox"/>				
22		SAS12R & RCS-A on RM-B		Next Step: 30

SAS Nominal reconfiguration
 File: H_CRP_AOC_7NRC.xls
 Author: dsalt-hp



Step No.	Time	Activity/Remarks	TC/TLM	Display/ Branch
		Execute Telecommand RMB_SAS1R-2R_CRSx_RCSA Command Parameter(s) : NomConf DF86Cmd AH8N1001 Enable 86 NomConf DD86Cmd AH8N2001 Enable 86 TC Control Flags : GBM IL DSE --Y -- --- Subsch. ID : 20 Det. descr. : TC(8,1) Mod Nom Conf - RMB_SAS1R-2R_CRSx_RCSA	ACY71109	
		<u>Now get the RM status to verify the commanded configuration</u>		
		Execute Telecommand Get RM-B status Command Parameter(s) : RMStat DF86Cmd AH841001 Enable 86 RMStat DD86Cmd AH842001 Enable 86 TC Control Flags : GBM IL DSE --Y -- --- Subsch. ID : 20 Det. descr. : TC(8,1) - Get RM-B status	ACZZ5109	
		Verify Packet Reception TM 8-6 for RM Status parametrized Packet Details: APID: 512 Type: 8 Subtype: 6 PI1: 41600 PI2: 1	A86_RMStatus	
		Verify Telemetry Nom Conf SAS1 AEW2R109	= REDUNDANT	AND=ZAAM0999
		Verify Telemetry Nom Conf SAS2 AEW2S109	= REDUNDANT	AND=ZAAM0999
		Verify Telemetry Nom Conf RCS AEW2U109	= RCS-A	AND=ZAAM0999
TC Seq. Name :HRA7NRCO (SAS1N2R RCSA RMB) TimeTag Type: Sub Schedule ID: <input type="checkbox"/>				
23		SAS1N2R & RCS-A on RM-B		Next Step: 30

SAS Nominal reconfiguration
 File: H_CRP_AOC_7NRC.xls
 Author: dsalt-hp



Step No.	Time	Activity/Remarks	TC/TLM	Display/ Branch
		Execute Telecommand RMB_SAS1N-2R_CRSx_RCSA Command Parameter(s) : NomConf DF86Cmd AH8N1001 Enable 86 NomConf DD86Cmd AH8N2001 Enable 86 TC Control Flags : GBM IL DSE --Y -- --- Subsch. ID : 20 Det. descr. : TC(8,1) Mod Nom Conf - RMB_SAS1N-2R_CRSx_RCSA	ACY69109	
		Now get the RM status to verify the commanded configuration		
		Execute Telecommand Get RM-B status Command Parameter(s) : RMStat DF86Cmd AH841001 Enable 86 RMStat DD86Cmd AH842001 Enable 86 TC Control Flags : GBM IL DSE --Y -- --- Subsch. ID : 20 Det. descr. : TC(8,1) - Get RM-B status	ACZZ5109	
		Verify Packet Reception TM 8-6 for RM Status parametrized Packet Details: APID: 512 Type: 8 Subtype: 6 PI1: 41600 PI2: 1	A86_RMStatus	
		Verify Telemetry Nom Conf SAS1 AEW2R109	= NOMINAL	AND=ZAAM0999
		Verify Telemetry Nom Conf SAS2 AEW2S109	= REDUNDANT	AND=ZAAM0999
		Verify Telemetry Nom Conf RCS AEW2U109	= RCS-A	AND=ZAAM0999
TC Seq. Name :HRA7NRCP (SAS1R2N RCSA RMB) TimeTag Type: Sub Schedule ID: □				
24		SAS1R2N & RCS-A on RM-B		Next Step: 30

SAS Nominal reconfiguration
 File: H_CRP_AOC_7NRC.xls
 Author: dsalt-hp



Step No.	Time	Activity/Remarks	TC/TLM	Display/ Branch
		Execute Telecommand <p style="text-align: right;">RMB_SAS1R-2N_CRSx_RCSA</p> Command Parameter(s) : NomConf DF86Cmd AH8N1001 Enable 86 NomConf DD86Cmd AH8N2001 Enable 86 TC Control Flags : <p style="text-align: right;"> GBM IL DSE --Y -- ---</p> Subsch. ID : 20 Det. descr. : TC(8,1) Mod Nom Conf - RMB_SAS1R-2N_CRSx_RCSA	ACY70109	
		<u>Now get the RM status to verify the commanded configuration</u>		
		Execute Telecommand <p style="text-align: right;">Get RM-B status</p> Command Parameter(s) : RMStat DF86Cmd AH841001 Enable 86 RMStat DD86Cmd AH842001 Enable 86 TC Control Flags : <p style="text-align: right;"> GBM IL DSE --Y -- ---</p> Subsch. ID : 20 Det. descr. : TC(8,1) - Get RM-B status	ACZZ5109	
		Verify Packet Reception <p style="text-align: center;">TM 8-6 for RM Status parametrized</p> Packet Details: <p style="text-align: right;"> APID: 512 Type: 8 Subtype: 6 PI1: 41600 PI2: 1</p>	A86_RMStatus	
		Verify Telemetry <p style="text-align: right;">Nom Conf SAS1 AEW2R109</p>	= REDUNDANT	AND=ZAAM0999
		Verify Telemetry <p style="text-align: right;">Nom Conf SAS2 AEW2S109</p>	= NOMINAL	AND=ZAAM0999
		Verify Telemetry <p style="text-align: right;">Nom Conf RCS AEW2U109</p>	= RCS-A	AND=ZAAM0999
TC Seq. Name : NULL05 (Null Sequence 05)				
TimeTag Type: Sub Schedule ID: □				
25		Select new SAS configuration & RCS-B on RM-B		Next Step: SAS12N 26 SAS12R 27 SAS1N2R 28 SAS1R2N 29

SAS Nominal reconfiguration
 File: H_CRP_AOC_7NRC.xls
 Author: dsalt-hp



Step No.	Time	Activity/Remarks	TC/TLM	Display/ Branch
TC Seq. Name : HRA7NRCQ (SAS1N2N RCSB RMB) TimeTag Type: Sub Schedule ID: <input type="checkbox"/>				
26		SAS12N & RCSB on RM-B		Next Step: 30
		Execute Telecommand <p style="text-align: right;">RMB_SAS1N-2N_CRSx_RCSB</p> Command Parameter(s) : NomConf DF86Cmd AH8N1001 NomConf DD86Cmd AH8N2001 TC Control Flags : <p style="text-align: right;">GBM IL DSE --Y -- ---</p> Subsch. ID : 20 Det. descr. : TC(8,1) Mod Nom Conf - RMB_SAS1N-2N_CRSx_RCSB	ACY72109 Enable 86 Enable 86	
		Now get the RM status to verify the commanded configuration		
		Execute Telecommand <p style="text-align: right;">Get RM-B status</p> Command Parameter(s) : RMStat DF86Cmd AH841001 RMStat DD86Cmd AH842001 TC Control Flags : <p style="text-align: right;">GBM IL DSE --Y -- ---</p> Subsch. ID : 20 Det. descr. : TC(8,1) - Get RM-B status	ACZZ5109 Enable 86 Enable 86	
		Verify Packet Reception <p style="text-align: right;">TM 8-6 for RM Status parametrized</p> Packet Details: <p style="text-align: right;">APID: 512 Type: 8 Subtype: 6 PI1: 41600 PI2: 1</p>	A86_RMStatus	
		Verify Telemetry <p style="text-align: right;">Nom Conf SAS1 AEW2R109</p>	= NOMINAL	AND=ZAAM0999
		Verify Telemetry <p style="text-align: right;">Nom Conf SAS2 AEW2S109</p>	= NOMINAL	AND=ZAAM0999
		Verify Telemetry <p style="text-align: right;">Nom Conf RCS AEW2U109</p>	= RCS-B	AND=ZAAM0999

SAS Nominal reconfiguration
 File: H_CRP_AOC_7NRC.xls
 Author: dsalt-hp



Step No.	Time	Activity/Remarks	TC/TLM	Display/ Branch
<p>TC Seq. Name :HRA7NRCR (SAS1R2R RCSB RMB)</p> <p>TimeTag Type: Sub Schedule ID:</p> <p>□</p>				
27		SAS12R & RCSB on RM-B		Next Step: 30
		Execute Telecommand <p style="text-align: right;">RMB_SAS1R-2R_CRSx_RCSB</p> Command Parameter(s) : NomConf DF86Cmd AH8N1001 Enable 86 NomConf DD86Cmd AH8N2001 Enable 86 TC Control Flags : <p style="text-align: right;">GBM IL DSE --Y -- ---</p> Subsch. ID : 20 Det. descr. : TC(8,1) Mod Nom Conf - RMB_SAS1R-2R_CRSx_RCSB	ACY75109 Enable 86 Enable 86	
		<u>Now get the RM status to verify the commanded configuration</u>		
		Execute Telecommand <p style="text-align: right;">Get RM-B status</p> Command Parameter(s) : RMStat DF86Cmd AH841001 Enable 86 RMStat DD86Cmd AH842001 Enable 86 TC Control Flags : <p style="text-align: right;">GBM IL DSE --Y -- ---</p> Subsch. ID : 20 Det. descr. : TC(8,1) - Get RM-B status	ACZZ5109 Enable 86 Enable 86	
		Verify Packet Reception <p style="text-align: right;">TM 8-6 for RM Status parametrized</p> Packet Details: <p style="text-align: right;">APID: 512 Type: 8 Subtype: 6 PI1: 41600 PI2: 1</p>	A86_RMstatus	
		Verify Telemetry <p style="text-align: right;">Nom Conf SAS1 AEW2R109</p>	= REDUNDANT	AND=ZAAM0999
		Verify Telemetry <p style="text-align: right;">Nom Conf SAS2 AEW2S109</p>	= REDUNDANT	AND=ZAAM0999
		Verify Telemetry <p style="text-align: right;">Nom Conf RCS AEW2U109</p>	= RCS-B	AND=ZAAM0999

SAS Nominal reconfiguration
 File: H_CRP_AOC_7NRC.xls
 Author: dsalt-hp



Step No.	Time	Activity/Remarks	TC/TLM	Display/ Branch
<p>TC Seq. Name : HRA7NRCS (SAS1N2R RCSB RMB)</p> <p>TimeTag Type: Sub Schedule ID: <input type="checkbox"/></p>				
28		SAS1N2R & RCSB on RM-B		Next Step: 30
		Execute Telecommand <p style="text-align: right;">RMB_SAS1N-2R_CRSx_RCSB</p> Command Parameter(s) : NomConf DF86Cmd AH8N1001 Enable 86 NomConf DD86Cmd AH8N2001 Enable 86 TC Control Flags : <p style="text-align: right;">GBM IL DSE --Y -- ---</p> Subsch. ID : 20 Det. descr. : TC(8,1) Mod Nom Conf - RMB_SAS1N-2R_CRSx_RCSB	ACY73109	
		<u>Now get the RM status to verify the commanded configuration</u>		
		Execute Telecommand <p style="text-align: right;">Get RM-B status</p> Command Parameter(s) : RMStat DF86Cmd AH841001 Enable 86 RMStat DD86Cmd AH842001 Enable 86 TC Control Flags : <p style="text-align: right;">GBM IL DSE --Y -- ---</p> Subsch. ID : 20 Det. descr. : TC(8,1) - Get RM-B status	ACZZ5109	
		Verify Packet Reception <p style="text-align: center;">TM 8-6 for RM Status parametrized</p> Packet Details: <p style="text-align: right;">APID: 512 Type: 8 Subtype: 6 PI1: 41600 PI2: 1</p>	A86_RMStatus	
		Verify Telemetry <p style="text-align: center;">Nom Conf SAS1 AEW2R109</p>	= NOMINAL	AND=ZAAM0999
		Verify Telemetry <p style="text-align: center;">Nom Conf SAS2 AEW2S109</p>	= REDUNDANT	AND=ZAAM0999
		Verify Telemetry <p style="text-align: center;">Nom Conf RCS AEW2U109</p>	= RCS-B	AND=ZAAM0999

SAS Nominal reconfiguration
 File: H_CRP_AOC_7NRC.xls
 Author: dsalt-hp



Step No.	Time	Activity/Remarks	TC/TLM	Display/ Branch
<p>TC Seq. Name : HRA7NRCT (SAS1R2N RCSB RMB)</p> <p>TimeTag Type: Sub Schedule ID: <input type="checkbox"/></p>				
29		SAS1R2N & RCSB on RM-B		Next Step: 30
		Execute Telecommand <p style="text-align: right;">RMB_SAS1R-2N_CRSx_RCSB</p> Command Parameter(s) : NomConf DF86Cmd AH8N1001 Enable 86 NomConf DD86Cmd AH8N2001 Enable 86 TC Control Flags : <p style="text-align: right;">GBM IL DSE --Y -- ---</p> Subsch. ID : 20 Det. descr. : TC(8,1) Mod Nom Conf - RMB_SAS1R-2N_CRSx_RCSB	ACY74109	
		<u>Now get the RM status to verify the commanded configuration</u>		
		Execute Telecommand <p style="text-align: right;">Get RM-B status</p> Command Parameter(s) : RMStat DF86Cmd AH841001 Enable 86 RMStat DD86Cmd AH842001 Enable 86 TC Control Flags : <p style="text-align: right;">GBM IL DSE --Y -- ---</p> Subsch. ID : 20 Det. descr. : TC(8,1) - Get RM-B status	ACZZ5109	
		Verify Packet Reception <p style="text-align: center;">TM 8-6 for RM Status parametrized</p> Packet Details: <p style="text-align: right;">APID: 512 Type: 8 Subtype: 6 PI1: 41600 PI2: 1</p>	A86_RMStatus	
		Verify Telemetry <p style="text-align: center;">Nom Conf SAS1 AEW2R109</p>	= REDUNDANT	AND=ZAAM0999
		Verify Telemetry <p style="text-align: center;">Nom Conf SAS2 AEW2S109</p>	= NOMINAL	AND=ZAAM0999
		Verify Telemetry <p style="text-align: center;">Nom Conf RCS AEW2U109</p>	= RCS-B	AND=ZAAM0999

SAS Nominal reconfiguration
 File: H_CRP_AOC_7NRC.xls
 Author: dsalt-hp



Step No.	Time	Activity/Remarks	TC/TLM	Display/ Branch
<p><i>TC Seq. Name :HRA7NRCU (Enable RMB)</i></p> <p><i>TimeTag Type:</i> <i>Sub Schedule ID:</i></p> <p><input type="checkbox"/></p>				
30		Enable RM-B		Next Step: 31
		Execute Telecommand <p style="text-align: right;">Ext_ACC_RM_B_Enable</p> <p><i>TC Control Flags :</i></p> <p style="text-align: right;">GBM IL DSE --Y -- --</p> <p><i>Subsch. ID : 10</i> <i>Det. descr. : External ACC RM B Enable - Mission Specific</i></p>	DCM24170	
		Verify Telemetry <p style="text-align: center;">RMA_fromTTR-RMB AEE92050</p>	= ENABLED	AND=ZAA07999
		Verify Telemetry <p style="text-align: center;">RMB_fromTTR-RMB AEE94050</p>	= ENABLED	AND=ZAA07999
<p><i>TC Seq. Name :NULL06 (Null Sequence 06)</i></p> <p><i>TimeTag Type:</i> <i>Sub Schedule ID:</i></p> <p><input type="checkbox"/></p>				
31		<i>IF</i> <i>RCS not in use</i>		Next Step: THEN 32 ELSE END
<p><i>TC Seq. Name :HRA7NRCV (Enable FCV Arm Chk)</i></p> <p><i>TimeTag Type:</i> <i>Sub Schedule ID:</i></p> <p><input type="checkbox"/></p>				
32		Enable FCV Armed check		Next Step: END

SAS Nominal reconfiguration
 File: H_CRP_AOC_7NRC.xls
 Author: dsalt-hp



Step No.	Time	Activity/Remarks	TC/TLM	Display/ Branch
		Execute Telecommand <p style="text-align: center;">EnaChkHealtyRCS FID 141</p> <i>Command Parameter(s) :</i> EnaChck DF86Cmd AH8F3001 EnaChck DD86Cmd AH8F4001	ACZDY109 Enable 86 Enable 86	
		<i>TC Control Flags :</i> <p style="text-align: right;">GBM IL DSE --Y -- ---</p> <i>Subsch. ID : 20</i> Det. descr. : TC(8,1) - Enable Command check - EnaChkHealtyRCS FID 141		
		Verify Telemetry <p style="text-align: center;">RCS arm sts chk AES4K001</p>	= Enabled	AND-ZAA06999
End of Procedure				