

Modify RCS Nominal Configuration
File: H_CRP_AOC_5NCF.xls
Author: dsalt-hp



Procedure Summary

Objectives

The objective of this Herschel ACMS procedure is to modify the RCS nominal configuration to the alternate branch (i.e. A or B).

The procedure involves the following activities:

- check initial RCS status and current "nominal" branch
- switch ON the RCS heating for branch to be selected (calls H_FCP_AOC_5CBH)
- open LV for the branch to be selected
- arm FCVs for the branch to be selected
- declare selected branch as nominal in RMA and RMB
- verify selected branch function
- disarm FCVs of current nominal branch (to be deselected)
- close LV of current nominal branch (to be deselected)
- switch OFF the RCS heating of the deselected branch
- if ACMS mode is SCM, disarm FCVs
- change Survival Mode configuration, if required (N.B. this step/procedure has yet to be defined)

NOTE: As the procedure is likely to be executed in a time critical situation, there is a minimum amount of branching. However, if alternate TCs are required (e.g. for a non-nominal SAS configuration) specific details are given in comments

Summary of Constraints

1. S/C in a nominal ACMS mode (i.e. SAM/OCM/SCM)
2. All associated thruster LCLs must be switched ON
 - Catbed Heater (CBH) LCLs 17 & 18
 - Flow Control Valve (FCV) LCLs 45 & 46
 - Latch Valve (LV) LCLs 47 & 48

Spacecraft Configuration

Start of Procedure

ACMS in a nominal mode (SAM/OCM/SCM)

End of Procedure

ACMS in same mode but nominal RCS branch now reconfigured

Reference File(s)

Input Command Sequences

Output Command Sequences

HRA5NCFB
HRA5NCFX
HRA5NCFY
HRA5NCFZ

Referenced Displays

ANDs GRDs SLDs

Modify RCS Nominal Configuration
 File: H_CRP_AOC_5NCF.xls
 Author: dsalt-hp



ZAA01999
 ZAA02999
 WALC1584
 WALC2584
 ZAA04999
 ZAAM0999
 ZAA07999

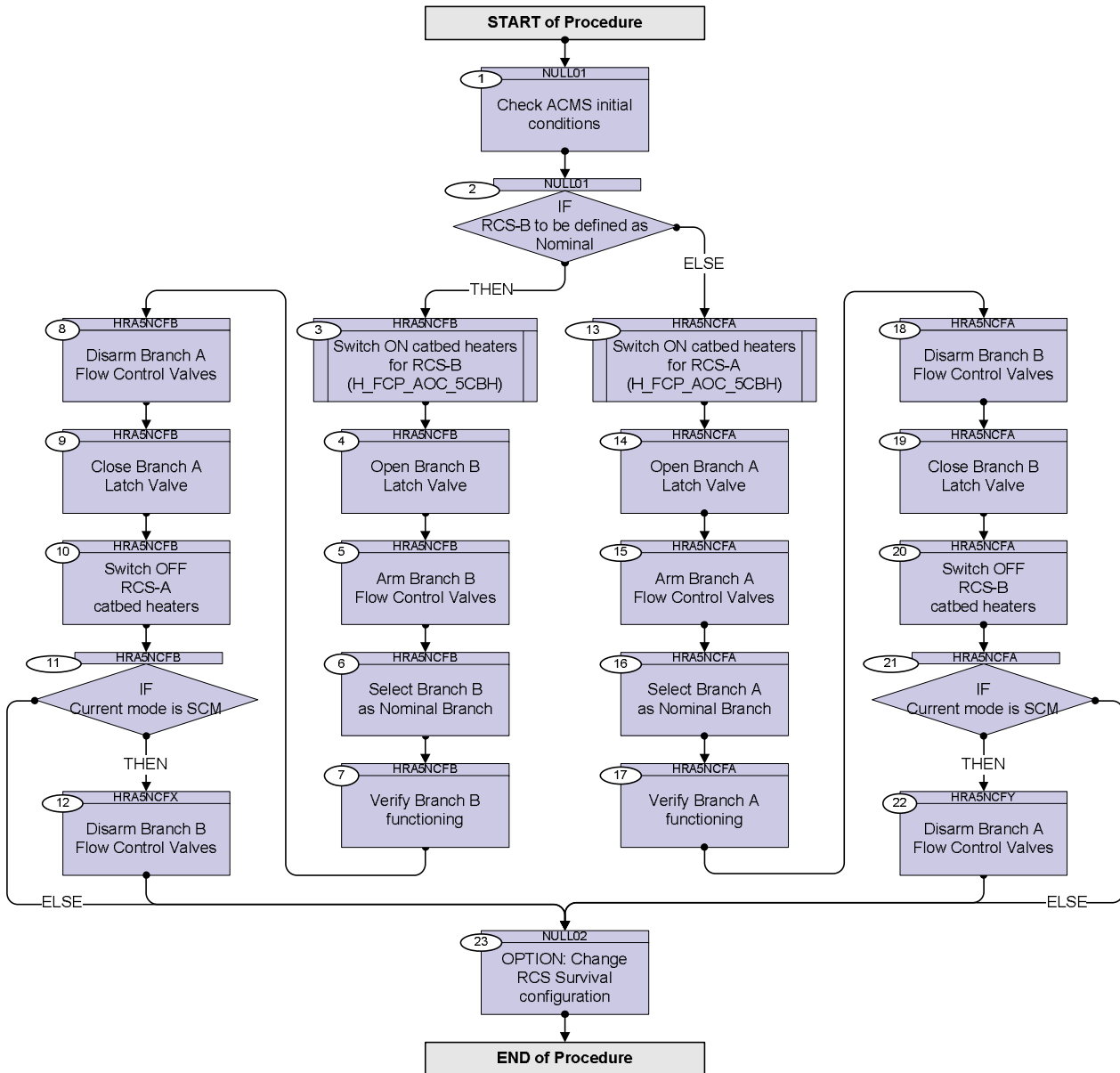
Configuration Control Information

DATE	FOP ISSUE	VERSION	MODIFICATION DESCRIPTION	AUTHOR	SPR REF
15/10/08		1	Created	dsalt-hp	
11/12/08		2	Steps to switch ON catbed heaters for RCS branch to be selected now replaced by calls to H_FCP_AOC_5CBH. <input type="checkbox"/> Comments added in Step 8 & 16 to enable alternate TCs to be selected if SAS configuration is non-nominal.	dsalt-hp	
16/12/08		3	Note added to " Objectives" concerning use of minimal branching.	dsalt-hp	
25/01/09		4	Steps to Disarm FCV & Close LV moved to end of each branch to avoid any period with RCS being disabled (Cf. incident in HSVT2 report)	dsalt-hp	
02/02/09	2	5	Checked-in for FOP release (02/02/09)	dsalt-hp	
22/04/09	2.3	6	Steps added (11-12 & 12-22) to disable FCVs if ACMS mode is SCM	dsalt-hp	
04/05/09	2.4	7	TM checks on LCLs corrected in Step 1.4, 7.2, 10.2, 17.2, 20.2	dsalt-hp	

Modify RCS Nominal Configuration
 File: H_CRP_AOC_5NCF.xls
 Author: dsalt-hp



Procedure Flowchart Overview



Modify RCS Nominal Configuration
 File: H_CRP_AOC_5NCF.xls
 Author: dsalt-hp



Step No.	Time	Activity/Remarks	TC/TLM	Display/ Branch
Beginning of Procedure				
TC Seq. Name : NULL01 (Null Sequence 01)				
TimeTag Type: Sub Schedule ID: □				
1		Check ACMS initial conditions		Next Step: 2
1.1		Check ACMS Mode configuration		□
		Verify Telemetry SpacecraftMode AESME002	<to be read>	AND=ZAA01999
		Verify Telemetry AcmsMode AESMG002	<to be read>	AND=ZAA01999
		Verify Telemetry AcmsSubstate AESMF002	<to be read>	AND=ZAA01999
1.2		Check FDIR status		□
		Verify Telemetry FdirMode AESMJ002	<to be read>	AND=ZAA01999
		Verify Telemetry SirStatus AESMM002	= FALSE	AND=ZAA01999
		Verify Telemetry CirStatus AESML002	= FALSE	AND=ZAA01999
1.3		Check RCS configuration status		□
		Verify Telemetry RcsInUse AESMV002	<to be read>	AND=ZAA01999
		Verify Telemetry Nom Conf RCS AESCF002	<to be read>	AND=ZAA01999
		Verify Telemetry Surv Conf RCS AESCM001	<to be read>	AND=ZAA01999
		Verify Telemetry RCSA Health Sts AESK1002	= Healthy	AND=ZAA02999
		Verify Telemetry RCSB Health Sts AESK2002	= Healthy	AND=ZAA02999
1.4		Check RCS power status		□

Modify RCS Nominal Configuration
 File: H_CRP_AOC_5NCF.xls
 Author: dsalt-hp



Step No.	Time	Activity/Remarks	TC/TLM	Display/ Branch
		<i>LCL's 17 - 18 power the catbed heaters of the two RCS branches.</i>		
		Verify Telemetry CBH_N_L17_S WMA2H565	= ON	AND=WALC1584
		Verify Telemetry CBH_N_L17_I WMA13565	>= 0.0 A <= 0.069 A	AND=WALC1584
		Verify Telemetry CBH_R_L18_S WM12H565	= OFF	AND=WALC1584
		Verify Telemetry CBH_R_L18_I WM113565	= 0.0 A	AND=WALC1584
		<i>LCL's 45 - 46 power the flow control valves of the two RCS branches.</i>		
		Verify Telemetry RcsThrsA_L45_1S WM22D565	= ON	AND=WALC2584
		Verify Telemetry RcsThrsA_L45_2S WM22J565	= ON	AND=WALC2584
		Verify Telemetry RcsThrsA_L45_I WM209565	>= 0.0 A <= 3.08 A	AND=WALC2584
		Verify Telemetry RcsThrsB_L46_1S WM92D565	= ON	AND=WALC2584
		Verify Telemetry RcsThrsB_L46_2S WM92J565	= ON	AND=WALC2584
		Verify Telemetry RcsThrsB_L46_I WM909565	>= 0.0 A <= 3.08 A	AND=WALC2584
		<i>LCL's 47 - 48 power the latch valves of the two RCS branches.</i>		
		Verify Telemetry RcsLvA_L47_1S WM12E565	= ON	AND=WALC2584
		Verify Telemetry AccLvA_L47_2S WM12J565	= ON	AND=WALC2584
		Verify Telemetry AccLvA_L47_I WM110565	>= 0.0 A <= 0.83 A	AND=WALC2584
		Verify Telemetry AccLvB_L48_1S WMA2E565	= ON	AND=WALC2584
		Verify Telemetry AccLvB_L48_2S WMA2J565	= ON	AND=WALC2584
		Verify Telemetry AccLvB_L48_I WMA10565	>= 0.0 A <= 0.83 A	AND=WALC2584

Modify RCS Nominal Configuration
 File: H_CRP_AOC_5NCF.xls
 Author: dsalt-hp



Step No.	Time	Activity/Remarks	TC/TLM	Display/ Branch
		NOTE: All of these LCL's must be closed throughout the mission. An explicit check is added before any operation involving the RCS to protect against inadvertent switching of these LCL's.		
1.5		Check catbed heaters status		<input type="checkbox"/>
		NOTE: There are no heater ON/OFF status parameters in the essential and mode-specific telemetry packets. To check that the heaters are ON/OFF, you will have to check the catbed temperature parameters. A heated catbed reaches a temperature of ~473 K.		
		Verify Telemetry A1D1 Ttemp act AETTA001	Steady state OFF = ~303 K Steady state ON = ~473 K	AND=ZAA04999
		Verify Telemetry A2D2 Ttemp act AETTB001	Steady state OFF = ~303 K Steady state ON = ~473 K	AND=ZAA04999
		Verify Telemetry C1F1 Ttemp act AETTC001	Steady state OFF = ~303 K Steady state ON = ~473 K	AND=ZAA04999
		Verify Telemetry C2F2 Ttemp act AETTD001	Steady state OFF = ~303 K Steady state ON = ~473 K	AND=ZAA04999
		Verify Telemetry C3U1 Ttemp act AETTE001	Steady state OFF = ~373 K Steady state ON = ~473 K	AND=ZAA04999
		Verify Telemetry C4U2 Ttemp act AETTF001	Steady state OFF = ~373 K Steady state ON = ~473 K	AND=ZAA04999
		Verify Telemetry A1D1 Ttmp unuse AETUA001	Steady state OFF = ~303 K Steady state ON = ~473 K	AND=ZAA04999

Modify RCS Nominal Configuration
 File: H_CRP_AOC_5NCF.xls
 Author: dsalt-hp



Step No.	Time	Activity/Remarks	TC/TLM	Display/ Branch
		Verify Telemetry A2D2 Ttmp unuse AETUB001	Steady state OFF = ~303 K Steady state ON = ~473 K	AND=ZAA04999
		Verify Telemetry C1F1 Ttmp unuse AETUC001	Steady state OFF = ~303 K Steady state ON = ~473 K	AND=ZAA04999
		Verify Telemetry C2F2 Ttmp unuse AETUD001	Steady state OFF = ~303 K Steady state ON = ~473 K	AND=ZAA04999
		Verify Telemetry C3U1 Ttmp unuse AETUE001	Steady state OFF = ~373 K Steady state ON = ~473 K	AND=ZAA04999
		Verify Telemetry C4U2 Ttmp unuse AETUF001	Steady state OFF = ~373 K Steady state ON = ~473 K	AND=ZAA04999
2		IF RCS-B to be defined as Nominal		Next Step: THEN 3 ELSE 13
<p>TC Seq. Name :HRA5NCFB (RCS_B as NOM)</p> <p>TimeTag Type: Sub Schedule ID: <input type="checkbox"/></p>				
3		Switch ON catbed heaters for RCS-B (H_FCP_AOC_5CBH)		Next Step: 4
		Execute Procedure: H_FCP_AOC_5CBH Switch ON thruster catbed heaters		
4		Open Branch B Latch Valve		Next Step: 5
		Verify Telemetry RCS2 LV sts AETF2002	= CLOSED	AND=ZAA04999

Modify RCS Nominal Configuration
 File: H_CRP_AOC_5NCF.xls
 Author: dsalt-hp



Step No.	Time	Activity/Remarks	TC/TLM	Display/ Branch
4.1		Open LV for RCS-B		<input type="checkbox"/>
		Execute Telecommand <p style="text-align: right;">RCS-B LV OPEN</p> Command Parameter(s) : RCSCfg DF86 Cmd AH8R3001 Enable 86 RCSCfg DD86 Cmd AH8R4001 Enable 86 TC Control Flags : <p style="text-align: right;">GBM IL DSE --Y -- --</p> Subsch. ID : 20 Det. descr. : TC(8,1) Command RCS config - RCS-B LV OPEN	ACZB3109	
		Execute Telecommand <p style="text-align: right;">Fire Cmd RCS config</p> Command Parameter(s) : FireFun DF86Cmd AH8F1001 Enable 86 FireFun DD86Cmd AH8F2001 Enable 86 TC Control Flags : <p style="text-align: right;">GBM IL DSE --Y -- --</p> Subsch. ID : 20 Det. descr. : TC(8,4) Fire Command - Fire Cmd RCS config	ACZ2M109	
4.2		Verify status of LV for RCS-B		<input type="checkbox"/>
		Verify Telemetry <p style="text-align: right;">RCS2 LV sts AETF2002</p>	= OPEN	AND=ZAA04999
5		Arm Branch B Flow Control Valves		Next Step: 6
		Verify Telemetry <p style="text-align: right;">RCS2 FCV ARMsts AETF6002</p>	= DISARM	AND=ZAA04999
5.1		Arm FCV for RCS-B		<input type="checkbox"/>

Modify RCS Nominal Configuration
 File: H_CRP_AOC_5NCF.xls
 Author: dsalt-hp



Step No.	Time	Activity/Remarks	TC/TLM	Display/ Branch
		Execute Telecommand <p style="text-align: right;">RCS-B FCV Arm</p> Command Parameter(s) : RCSCfg DF86 Cmd AH8R3001 Enable 86 RCSCfg DD86 Cmd AH8R4001 Enable 86 TC Control Flags : GBM IL DSE --Y -- --- Subsch. ID : 20 Det. descr. : TC(8,1) Command RCS config - RCS-B FCV Arm	ACZC5109	
		Execute Telecommand <p style="text-align: right;">Fire Cmd RCS config</p> Command Parameter(s) : FireFun DF86Cmd AH8F1001 Enable 86 FireFun DD86Cmd AH8F2001 Enable 86 TC Control Flags : GBM IL DSE --Y -- --- Subsch. ID : 20 Det. descr. : TC(8,4) Fire Command - Fire Cmd RCS config	ACZ2M109	
5.2		Verify status of FCV for RCS-B		<input type="checkbox"/>
		Verify Telemetry <p style="text-align: right;">RCS2 FCV ARMsts AETF6002</p> = ARM		AND=ZAA04999
6		Select Branch B as Nominal Branch		Next Step: 7
6.1		Verify RM A Nominal Configuration via Status Report		<input type="checkbox"/>
		Execute Telecommand <p style="text-align: right;">Get RM-A status</p> Command Parameter(s) : RMStat DF86Cmd AH841001 Enable 86 RMStat DD86Cmd AH842001 Enable 86 TC Control Flags : GBM IL DSE --Y -- --- Subsch. ID : 20 Det. descr. : TC(8,1) - Get RM-A status	ACZZ4109	

Modify RCS Nominal Configuration
 File: H_CRP_AOC_5NCF.xls
 Author: dsalt-hp



Step No.	Time	Activity/Remarks	TC/TLM	Display/ Branch
		Verify Packet Reception TM 8-6 for RM Status parametrized Packet Details: APID: 512 Type: 8 Subtype: 6 PI1: 41600 PI2: 1	A86_RMStatus	
		NOTE: The following TM values assume a nominal ACMS configuration for the SAS and CRS. <u>If the RM reports an alternate configuration, then the TC in Step 8.3 should be modified accordingly.</u>		
		Verify Packet Telemetry (Pkt = A86_RMStatus) Nom Conf SAS1 AEW2R109	= NOMINAL	AND=ZAAM0999
		Verify Packet Telemetry (Pkt = A86_RMStatus) Nom Conf SAS2 AEW2S109	= NOMINAL	AND=ZAAM0999
		Verify Packet Telemetry (Pkt = A86_RMStatus) Nom Conf RCS AEW2U109	= RCS-A	AND=ZAAM0999
		Verify Telemetry Surv Conf CRS AEW37109	= CRS-2	AND=ZAAM0999
		Verify Packet Telemetry Nom Conf Reserv AEW2T109	= <dec>	AND=ZAAM0999
		Verify Telemetry Reserved AESCE002	= CRS-1	AND=ZAA01999
6.2		Disable RM A		<input type="checkbox"/>
		Execute Telecommand Ext_ACC_RM_A_Disable TC Control Flags : GBM IL DSE --Y -- --- Subsch. ID : 10 Det. descr. : External ACC RM A Disable - Mission Specific	DCM22170	
		Verify Telemetry RMA_fromTTR-RMA AEE91050	= DISABLED	AND=ZAA07999
		Verify Telemetry RMA_fromTTR-RMB AEE92050	= DISABLED	AND=ZAA07999
		Verify Telemetry RMB_fromTTR-RMA AEE93050	= ENABLED	AND=ZAA07999
		Verify Telemetry RMB_fromTTR-RMB AEE94050	= ENABLED	AND=ZAA07999

Modify RCS Nominal Configuration
 File: H_CRP_AOC_5NCF.xls
 Author: dsalt-hp



Step No.	Time	Activity/Remarks	TC/TLM	Display/ Branch
6.3		Select RCS Branch B as Nominal Branch in RM A		<input type="checkbox"/>
		NOTE: The following TC assumes a nominal ACMS configuration for the SAS and CRS. If the RM reported an alternate configuration in Step 8.1, then <u>this TC should be replaced by one of the following:</u> ACY65109 (RMA_SAS1N-2R_CRSx_RCSB) ACY66109 (RMA_SAS1R-2N_CRSx_RCSB) ACY67109 (RMA_SAS1R-2R_CRSx_RCSB)		
		Execute Telecommand RMA_SAS1N-2N_CRSx_RCSB Command Parameter(s) : NomConf DF86Cmd AH8N1001 Enable 86 NomConf DD86Cmd AH8N2001 Enable 86 TC Control Flags : GBM IL DSE --Y -- --- Subsch. ID : 20 Det. descr. : TC(8,1) Mod Nom Conf - RMA_SAS1N-2N_CRSx_RCSB	ACY64109	
		Verify Telemetry Nom Conf SAS AESCB002 = SAS12 N		AND=ZAA01999
		Verify Telemetry Reserved AESCE002 = CRS-1		AND=ZAA01999
		Verify Telemetry Nom Conf RCS AESCF002 = RCS-B		AND=ZAA01999
6.4		Verify RM A Nominal Configuration via Status Report		<input type="checkbox"/>
		Execute Telecommand Get RM-A status Command Parameter(s) : RMStat DF86Cmd AH841001 Enable 86 RMStat DD86Cmd AH842001 Enable 86 TC Control Flags : GBM IL DSE --Y -- --- Subsch. ID : 20 Det. descr. : TC(8,1) - Get RM-A status	ACZZ4109	

Modify RCS Nominal Configuration
 File: H_CRP_AOC_5NCF.xls
 Author: dsalt-hp



Step No.	Time	Activity/Remarks	TC/TLM	Display/ Branch
6.6		Verify RM B Nominal Configuration via Status Report		<input type="checkbox"/>
		Execute Telecommand <p style="text-align: right;">Get RM-B status</p> Command Parameter(s) : RMStat DF86Cmd AH841001 Enable 86 RMStat DD86Cmd AH842001 Enable 86 TC Control Flags : <p style="text-align: right;">GBM IL DSE --Y -- --</p> Subsch. ID : 20 Det. descr. : TC(8,1) - Get RM-B status	ACZZ5109	
		Verify Packet Reception TM 8-6 for RM Status parametrized Packet Details: <p style="text-align: right;">APID: 512 Type: 8 Subtype: 6 PI1: 41600 PI2: 1</p>	A86_RMStatus	
		NOTE: The following TM values assume a nominal ACMS configuration for the SAS and CRS. <u>If the RM reports an alternate configuration, then the TC in Step 8.8 should be modified accordingly.</u>		
		Verify Packet Telemetry (Pkt = A86_RMStatus) <p style="text-align: center;">Nom Conf SAS1 AEW2R109 = NOMINAL</p>		AND=ZAAM0999
		Verify Packet Telemetry (Pkt = A86_RMStatus) <p style="text-align: center;">Nom Conf SAS2 AEW2S109 = NOMINAL</p>		AND=ZAAM0999
		Verify Packet Telemetry (Pkt = A86_RMStatus) <p style="text-align: center;">Nom Conf RCS AEW2U109 = RCS-A</p>		AND=ZAAM0999
		Verify Telemetry <p style="text-align: center;">Surv Conf CRS AEW37109 = CRS-2</p>		AND=ZAAM0999
		Verify Packet Telemetry <p style="text-align: center;">Nom Conf Reserv AEW2T109 = <dec></p>		AND=ZAAM0999
		Verify Telemetry <p style="text-align: center;">Reserved AESCE002 = CRS-1</p>		AND=ZAA01999
6.7		Disable RM B		<input type="checkbox"/>

Modify RCS Nominal Configuration
 File: H_CRP_AOC_5NCF.xls
 Author: dsalt-hp



Step No.	Time	Activity/Remarks	TC/TLM	Display/ Branch
		Execute Telecommand <div style="text-align: right;">Ext_ACC_RM_B_Disable</div> TC Control Flags : Subsch. ID : 10 Det. descr. : External ACC RM B Disable - Mission Specific	DCM25170	
		Verify Telemetry <div style="text-align: right;">RMA_fromTTR-RMA AEE91050</div>	= ENABLED	AND=ZAA07999
		Verify Telemetry <div style="text-align: right;">RMA_fromTTR-RMB AEE92050</div>	= ENABLED	AND=ZAA07999
		Verify Telemetry <div style="text-align: right;">RMB_fromTTR-RMA AEE93050</div>	= DISABLED	AND=ZAA07999
		Verify Telemetry <div style="text-align: right;">RMB_fromTTR-RMB AEE94050</div>	= DISABLED	AND=ZAA07999
6.8		Select RCS Branch B as Nominal Branch in RM B		<input type="checkbox"/>
		NOTE: The following TC assumes a nominal ACMS configuration for the SAS and CRS. If the RM reported an alternate configuration in Step 8.6, then this TC should be replaced by one of the following: ACY73109 (RMB_SAS1N-2R_CRSx_RCSB) ACY74109 (RMB_SAS1R-2N_CRSx_RCSB) ACY75109 (RMB_SAS1R-2R_CRSx_RCSB)		
		Execute Telecommand <div style="text-align: right;">RMB_SAS1N-2N_CRSx_RCSB</div> Command Parameter(s) : <div style="text-align: right;">NomConf DF86Cmd AH8N1001 Enable 86</div> <div style="text-align: right;">NomConf DD86Cmd AH8N2001 Enable 86</div> TC Control Flags : Subsch. ID : 20 Det. descr. : TC(8,1) Mod Nom Conf - RMB_SAS1N-2N_CRSx_RCSB	ACY72109	
		Verify Telemetry <div style="text-align: right;">Nom Conf SAS AESCB002</div>	= SAS12 N	AND=ZAA01999
		Verify Telemetry <div style="text-align: right;">Reserved AESCE002</div>	= CRS-1	AND=ZAA01999
		Verify Telemetry <div style="text-align: right;">Nom Conf RCS AESCF002</div>	= RCS-B	AND=ZAA01999

Modify RCS Nominal Configuration
 File: H_CRP_AOC_5NCF.xls
 Author: dsalt-hp



Step No.	Time	Activity/Remarks	TC/TLM	Display/ Branch
6.9		Verify RM B Nominal Configuration via Status Report		<input type="checkbox"/>
		Execute Telecommand <p style="text-align: right;">Get RM-B status</p> Command Parameter(s) : RMStat DF86Cmd AH841001 Enable 86 RMStat DD86Cmd AH842001 Enable 86 TC Control Flags : <p style="text-align: right;">GBM IL DSE ---Y --- ---</p> Subsch. ID : 20 Det. descr. : TC(8,1) - Get RM-B status	ACZZ5109 Enable 86 Enable 86	
		Verify Packet Reception TM 8-6 for RM Status parametrized Packet Details: <p style="text-align: right;">APID: 512 Type: 8 Subtype: 6 PI1: 41600 PI2: 1</p>	A86_RMStatus	
		NOTE: The following TM values assume a nominal ACMS configuration for the SAS and CRS. <u>If the RM reports an alternate configuration, then check that it is coherent with the configuration commanded in Step 8.8.</u>		
		Verify Packet Telemetry (Pkt = A86_RMStatus) <p style="text-align: center;">Nom Conf SAS1 AEW2R109 = NOMINAL</p>		AND=ZAAM0999
		Verify Packet Telemetry (Pkt = A86_RMStatus) <p style="text-align: center;">Nom Conf SAS2 AEW2S109 = NOMINAL</p>		AND=ZAAM0999
		Verify Packet Telemetry (Pkt = A86_RMStatus) <p style="text-align: center;">Nom Conf RCS AEW2U109 = RCS-B</p>		AND=ZAAM0999
		Verify Telemetry <p style="text-align: center;">Surv Conf CRS AEW37109 = CRS-2</p>		AND=ZAAM0999
		Verify Packet Telemetry <p style="text-align: center;">Nom Conf Reserv AEW2T109 = <dec></p>		AND=ZAAM0999
		Verify Telemetry <p style="text-align: center;">Reserved AESCE002 = CRS-1</p>		AND=ZAA01999
6.10		Enable RM B		<input type="checkbox"/>

Modify RCS Nominal Configuration
 File: H_CRP_AOC_5NCF.xls
 Author: dsalt-hp



Step No.	Time	Activity/Remarks	TC/TLM	Display/ Branch
		Execute Telecommand <div style="text-align: right;">Ext_ACC_RM_B_Enable</div> TC Control Flags : <div style="text-align: right;">GBM IL DSE --Y -- --</div> Subsch. ID : 10 Det. descr. : External ACC RM B Enable - Mission Specific	DCM24170	
		Verify Telemetry <div style="text-align: right;">RMA_fromTTR-RMA AEE91050</div>	= ENABLED	AND=ZAA07999
		Verify Telemetry <div style="text-align: right;">RMA_fromTTR-RMB AEE92050</div>	= ENABLED	AND=ZAA07999
		Verify Telemetry <div style="text-align: right;">RMB_fromTTR-RMA AEE93050</div>	= ENABLED	AND=ZAA07999
		Verify Telemetry <div style="text-align: right;">RMB_fromTTR-RMB AEE94050</div>	= ENABLED	AND=ZAA07999
7		Verify Branch B functioning		Next Step: 8
7.1		RCS Configuration Status		<input type="checkbox"/>
		Verify Telemetry <div style="text-align: right;">Nom Conf RCS AESCF002</div>	= RCS-B	AND=ZAA01999
		Verify Telemetry <div style="text-align: right;">RCSA Health Sts AESK1002</div>	= Healthy	AND=ZAA02999
		Verify Telemetry <div style="text-align: right;">RCSB Health Sts AESK2002</div>	= Healthy	AND=ZAA02999
7.2		RCS Power Status		<input type="checkbox"/>
		Verify Telemetry <div style="text-align: right;">CBH_N_L17_S WMA2H565</div>	= ON	AND=WALC1584
		Verify Telemetry <div style="text-align: right;">CBH_N_L17_I WMA13565</div>	>= 0.0 A <= 0.069 A	AND=WALC1584
		Verify Telemetry <div style="text-align: right;">CBH_R_L18_S WM12H565</div>	= OFF	AND=WALC1584
		Verify Telemetry <div style="text-align: right;">CBH_R_L18_I WM113565</div>	= 0.0 A	AND=WALC1584
		Verify Telemetry <div style="text-align: right;">RcsThrsa_L45_1S WM22D565</div>	= ON	AND=WALC2584

Modify RCS Nominal Configuration
 File: H_CRP_AOC_5NCF.xls
 Author: dsalt-hp



Step No.	Time	Activity/Remarks	TC/TLM	Display/ Branch
		Verify Telemetry RcsThrsA_L45_2S WM22J565	= ON	AND=WALC2584
		Verify Telemetry RcsThrsA_L45_I WM209565	<A branch consumption should be close to 0 A>	AND=WALC2584
		Verify Telemetry RcsThrsB_L46_1S WM92D565	= ON	AND=WALC2584
		Verify Telemetry RcsThrsB_L46_2S WM92J565	= ON	AND=WALC2584
		Verify Telemetry RcsThrsB_L46_I WM909565	>= 0.0 A <= 3.08 A	AND=WALC2584
		Verify Telemetry RcsLva_L47_1S WM12E565	= ON	AND=WALC2584
		Verify Telemetry AccLva_L47_2S WM12J565	= ON	AND=WALC2584
		Verify Telemetry AccLva_L47_I WM110565	>= 0.0 A <= 0.83 A	AND=WALC2584
		Verify Telemetry AccLvb_L48_1S WMA2E565	= ON	AND=WALC2584
		Verify Telemetry AccLvb_L48_2S WMA2J565	= ON	AND=WALC2584
		Verify Telemetry AccLvb_L48_I WMA10565	>= 0.0 A <= 0.83 A	AND=WALC2584
7.3		Verify Reset of Accumulated Totals		<input type="checkbox"/>
		Verify Telemetry A1D1 accu ToT AETAA001	<reset to 0>	AND=ZAA04999
		Verify Telemetry A2D2 accu ToT AETAB001	<reset to 0>	AND=ZAA04999
		Verify Telemetry C1F1 accu ToT AETAC001	<reset to 0>	AND=ZAA04999
		Verify Telemetry C2F2 accu ToT AETAD001	<reset to 0>	AND=ZAA04999
		Verify Telemetry C3U1 accu ToT AETAE001	<reset to 0>	AND=ZAA04999
		Verify Telemetry C4U2 accu ToT AETAF001	<reset to 0>	AND=ZAA04999

Modify RCS Nominal Configuration
 File: H_CRP_AOC_5NCF.xls
 Author: dsalt-hp



Step No.	Time	Activity/Remarks	TC/TLM	Display/ Branch
8		Disarm Branch A Flow Control Valves		Next Step: 9
		Verify Telemetry RCS1 FCV ARMsts AETF5002	= ARM	AND=ZAA04999
8.1		Disarm FCV for RCS-A		<input type="checkbox"/>
		Execute Telecommand RCS-A FCV Disarm ACZC3109 Command Parameter(s) : RCSCfg DF86 Cmd AH8R3001 Enable 86 RCSCfg DD86 Cmd AH8R4001 Enable 86 TC Control Flags : GBM IL DSE --Y -- --- Subsch. ID : 20 Det. descr. : TC(8,1) Command RCS config - RCS-A FCV Disarm		
		Execute Telecommand Fire Cmd RCS config ACZ2M109 Command Parameter(s) : FireFun DF86Cmd AH8F1001 Enable 86 FireFun DD86Cmd AH8F2001 Enable 86 TC Control Flags : GBM IL DSE --Y -- --- Subsch. ID : 20 Det. descr. : TC(8,4) Fire Command - Fire Cmd RCS config		
8.2		Verify status of FCV for RCS-A		<input type="checkbox"/>
		Verify Telemetry RCS1 FCV ARMsts AETF5002	= DISARM	AND=ZAA04999
9		Close Branch A Latch Valve		Next Step: 10
		Verify Telemetry RCS1 LV sts AETF1002	= OPEN	AND=ZAA04999
9.1		Close LV for RCS-A		<input type="checkbox"/>

Modify RCS Nominal Configuration
 File: H_CRP_AOC_5NCF.xls
 Author: dsalt-hp



Step No.	Time	Activity/Remarks	TC/TLM	Display/ Branch
		Execute Telecommand <p style="text-align: right;">RCS-A LV CLOSE</p> Command Parameter(s) : RCSCfg DF86 Cmd AH8R3001 Enable 86 RCSCfg DD86 Cmd AH8R4001 Enable 86 TC Control Flags : <p style="text-align: right;">GBM IL DSE --Y -- ---</p> Subsch. ID : 20 Det. descr. : TC(8,1) Command RCS config - RCS-A LV CLOSE	ACZB2109	
		Execute Telecommand <p style="text-align: right;">Fire Cmd RCS config</p> Command Parameter(s) : FireFun DF86Cmd AH8F1001 Enable 86 FireFun DD86Cmd AH8F2001 Enable 86 TC Control Flags : <p style="text-align: right;">GBM IL DSE --Y -- ---</p> Subsch. ID : 20 Det. descr. : TC(8,4) Fire Command - Fire Cmd RCS config	ACZ2M109	
9.2		Verify status of LV for RCS-A		<input type="checkbox"/>
		Verify Telemetry <p style="text-align: right;">RCS1 LV sts AETF1002 = CLOSED</p>		AND=ZAA04999
10		Switch OFF RCS-A catbed heaters		Next Step: 11
		Verify Telemetry <p style="text-align: right;">Nom Conf RCS AESCF002 = RCS-B</p>		AND=ZAA01999
10.1		Switch OFF thruster heaters for RCS-A		<input type="checkbox"/>
		Execute Telecommand <p style="text-align: right;">All HTR RCS-A OFF</p> Command Parameter(s) : RCSCfg DF86 Cmd AH8R3001 Enable 86 RCSCfg DD86 Cmd AH8R4001 Enable 86 TC Control Flags : <p style="text-align: right;">GBM IL DSE --Y -- ---</p> Subsch. ID : 20 Det. descr. : TC(8,1) Command RCS config - Herschel All HTR RCS-A OFF	ACZE6109	

Modify RCS Nominal Configuration
 File: H_CRP_AOC_5NCF.xls
 Author: dsalt-hp



Step No.	Time	Activity/Remarks	TC/TLM	Display/ Branch
		Execute Telecommand Fire Cmd RCS config Command Parameter(s) : FireFun DF86Cmd AH8F1001 Enable 86 FireFun DD86Cmd AH8F2001 Enable 86 TC Control Flags : GBM IL DSE --Y -- -- Subsch. ID : 20 Det. descr. : TC(8,4) Fire Command - Fire Cmd RCS config	ACZ2M109	
10.2		Check RCS catbed heater status & current		<input type="checkbox"/>
		LCL's 45 - 46 power the flow control valves of the two RCS branches.		
		Verify Telemetry RcsThrsA_L45_1S WM22D565 = ON		AND=WALC2584
		Verify Telemetry RcsThrsA_L45_2S WM22J565 = ON		AND=WALC2584
		Verify Telemetry RcsThrsA_L45_I WM209565 >= 0.0 A <= 3.08 A		AND=WALC2584
		Verify Telemetry RcsThrsB_L46_1S WM92D565 = ON		AND=WALC2584
		Verify Telemetry RcsThrsB_L46_2S WM92J565 = ON		AND=WALC2584
		Verify Telemetry RcsThrsB_L46_I WM909565 = 0.0 A		AND=WALC2584
10.3		Verify decreasing catbed temps for UNUSED branch		<input type="checkbox"/>
		Observe <u>decreasing values</u> of the catbed temperatures		
		Verify Telemetry A1D1 Ttmp unuse AETUA001 (decreasing)		AND=ZAA04999
		Verify Telemetry A2D2 Ttmp unuse AETUB001 (decreasing)		AND=ZAA04999
		Verify Telemetry C1F1 Ttmp unuse AETUC001 (decreasing)		AND=ZAA04999
		Verify Telemetry C2F2 Ttmp unuse AETUD001 (decreasing)		AND=ZAA04999

Modify RCS Nominal Configuration
 File: H_CRP_AOC_5NCF.xls
 Author: dsalt-hp



Step No.	Time	Activity/Remarks	TC/TLM	Display/ Branch
		Verify Telemetry C3U1 Ttmp unuse AETUE001	(decreasing)	AND=ZAA04999
		Verify Telemetry C4U2 Ttmp unuse AETUF001	(decreasing)	AND=ZAA04999
11		IF Current mode is SCM		Next Step: THEN 12 ELSE 23
<p>TC Seq. Name :HRA5NCFX (RCS_BdisarmSCM)</p> <p>TimeTag Type: Sub Schedule ID: <input type="checkbox"/></p>				
12		Disarm Branch B Flow Control Valves		Next Step: 23
		Verify Telemetry RCS2 FCV ARMsts AETF6002	= ARM	AND=ZAA04999
12.1		Disarm FCV for RCS-B		<input type="checkbox"/>
		Execute Telecommand RCS-B FCV Disarm ACZC6109 Command Parameter(s) : RCSCfg DF86 Cmd AH8R3001 Enable 86 RCSCfg DD86 Cmd AH8R4001 Enable 86 TC Control Flags : GBM IL DSE --Y -- --- Subsch. ID : 20 Det. descr. : TC(8,1) Command RCS config - RCS-B FCV Disarm		
		Execute Telecommand Fire Cmd RCS config ACZ2M109 Command Parameter(s) : FireFun DF86Cmd AH8F1001 Enable 86 FireFun DD86Cmd AH8F2001 Enable 86 TC Control Flags : GBM IL DSE --Y -- --- Subsch. ID : 20 Det. descr. : TC(8,4) Fire Command - Fire Cmd RCS config		

Modify RCS Nominal Configuration
 File: H_CRP_AOC_5NCF.xls
 Author: dsalt-hp



Step No.	Time	Activity/Remarks	TC/TLM	Display/ Branch
14.2		Verify status of LV for RCS-A		<input type="checkbox"/>
		Verify Telemetry RCS1 LV sts AETF1002	= OPEN	AND=ZAA04999
15		Arm Branch A Flow Control Valves		Next Step: 16
		Verify Telemetry RCS1 FCV ARMsts AETF5002	= DISARM	AND=ZAA04999
15.1		Arm FCV for RCS-A		<input type="checkbox"/>
		Execute Telecommand RCS-A FCV Arm ACZC2109 Command Parameter(s) : RCSCfg DF86 Cmd AH8R3001 Enable 86 RCSCfg DD86 Cmd AH8R4001 Enable 86 TC Control Flags : GBM IL DSE --Y -- --- Subsch. ID : 20 Det. descr. : TC(8,1) Command RCS config - RCS-A FCV Arm		
		Execute Telecommand Fire Cmd RCS config ACZ2M109 Command Parameter(s) : FireFun DF86Cmd AH8F1001 Enable 86 FireFun DD86Cmd AH8F2001 Enable 86 TC Control Flags : GBM IL DSE --Y -- --- Subsch. ID : 20 Det. descr. : TC(8,4) Fire Command - Fire Cmd RCS config		
15.2		Verify status of FCV for RCS-A		<input type="checkbox"/>
		Verify Telemetry RCS1 FCV ARMsts AETF5002	= ARM	AND=ZAA04999
16		Select Branch A as Nominal Branch		Next Step: 17

Modify RCS Nominal Configuration
 File: H_CRP_AOC_5NCF.xls
 Author: dsalt-hp



Step No.	Time	Activity/Remarks	TC/TLM	Display/ Branch
16.1		Verify RM A Nominal Configuration via Status Report		<input type="checkbox"/>
		Execute Telecommand <p style="text-align: right;">Get RM-A status</p> Command Parameter(s) : RMStat DF86Cmd AH841001 Enable 86 RMStat DD86Cmd AH842001 Enable 86 TC Control Flags : <p style="text-align: right;">GBM IL DSE --Y -- --</p> Subsch. ID : 20 Det. descr. : TC(8,1) - Get RM-A status	ACZZ4109	
		Verify Packet Reception TM 8-6 for RM Status parametrized Packet Details: <p style="text-align: right;">APID: 512 Type: 8 Subtype: 6 PI1: 41600 PI2: 1</p>	A86_RMStatus	
		NOTE: The following TM values assume a nominal ACMS configuration for the SAS and CRS. <u>If the RM reports an alternate configuration, then the TC in Step 16.3 should be modified accordingly.</u>		
		Verify Packet Telemetry (Pkt = A86_RMStatus) <p style="text-align: center;">Nom Conf SAS1 AEW2R109 = NOMINAL</p>		AND=ZAAM0999
		Verify Packet Telemetry (Pkt = A86_RMStatus) <p style="text-align: center;">Nom Conf SAS2 AEW2S109 = NOMINAL</p>		AND=ZAAM0999
		Verify Packet Telemetry (Pkt = A86_RMStatus) <p style="text-align: center;">Nom Conf RCS AEW2U109 = RCS-B</p>		AND=ZAAM0999
		Verify Telemetry <p style="text-align: center;">Surv Conf CRS AEW37109 = CRS-2</p>		AND=ZAAM0999
		Verify Packet Telemetry <p style="text-align: center;">Nom Conf Reserv AEW2T109 = <dec></p>		AND=ZAAM0999
		Verify Telemetry <p style="text-align: center;">Reserved AESCE002 = CRS-1</p>		AND=ZAA01999
16.2		Disable RM A		<input type="checkbox"/>

Modify RCS Nominal Configuration
 File: H_CRP_AOC_5NCF.xls
 Author: dsalt-hp



Step No.	Time	Activity/Remarks	TC/TLM	Display/ Branch
		Execute Telecommand <div style="text-align: right;">Ext_ACC_RM_A_Disable</div> TC Control Flags : Subsch. ID : 10 Det. descr. : External ACC RM A Disable - Mission Specific	DCM22170	
		Verify Telemetry <div style="text-align: right;">RMA_fromTTR-RMA AEE91050</div>	= DISABLED	AND=ZAA07999
		Verify Telemetry <div style="text-align: right;">RMA_fromTTR-RMB AEE92050</div>	= DISABLED	AND=ZAA07999
		Verify Telemetry <div style="text-align: right;">RMB_fromTTR-RMA AEE93050</div>	= ENABLED	AND=ZAA07999
		Verify Telemetry <div style="text-align: right;">RMB_fromTTR-RMB AEE94050</div>	= ENABLED	AND=ZAA07999
16.3		Select RCS Branch A as Nominal Branch in RM A		<input type="checkbox"/>
		NOTE: The following TC assumes a nominal ACMS configuration for the SAS and CRS. If the RM reported an alternate configuration in Step 16.1, then this TC should be replaced by one of the following: ACY61109 (RMA_SAS1N-2R_CRSx_RCSA) ACY62109 (RMA_SAS1R-2N_CRSx_RCSA) ACY63109 (RMA_SAS1R-2R_CRSx_RCSA)		
		Execute Telecommand <div style="text-align: right;">RMA_SAS1N-2N_CRSx_RCSA</div> Command Parameter(s) : <div style="text-align: right;">NomConf DF86Cmd AH8N1001 Enable 86</div> <div style="text-align: right;">NomConf DD86Cmd AH8N2001 Enable 86</div> TC Control Flags : Subsch. ID : 20 Det. descr. : TC(8,1) Mod Nom Conf - RMA_SAS1N-2N_CRSx_RCSA	ACY60109	
		Verify Telemetry <div style="text-align: right;">Nom Conf SAS AESCB002</div>	= SAS12 N	AND=ZAA01999
		Verify Telemetry <div style="text-align: right;">Reserved AESCE002</div>	= CRS-1	AND=ZAA01999
		Verify Telemetry <div style="text-align: right;">Nom Conf RCS AESCF002</div>	= RCS-A	AND=ZAA01999

Modify RCS Nominal Configuration
 File: H_CRP_AOC_5NCF.xls
 Author: dsalt-hp



Step No.	Time	Activity/Remarks	TC/TLM	Display/ Branch
16.4		Verify RM A Nominal Configuration via Status Report		<input type="checkbox"/>
		Execute Telecommand <p style="text-align: right;">Get RM-A status</p> Command Parameter(s) : RMStat DF86Cmd AH841001 Enable 86 RMStat DD86Cmd AH842001 Enable 86 TC Control Flags : <p style="text-align: right;">GBM IL DSE ---Y --- ---</p> Subsch. ID : 20 Det. descr. : TC(8,1) - Get RM-A status	ACZZ4109 Enable 86 Enable 86	
		Verify Packet Reception TM 8-6 for RM Status parametrized Packet Details: <p style="text-align: right;">APID: 512 Type: 8 Subtype: 6 PI1: 41600 PI2: 1</p>	A86_RMStatus	
		NOTE: The following TM values assume a nominal ACMS configuration for the SAS and CRS. <u>If the RM reports an alternate configuration, then check that it is coherent with the configuration commanded in Step 16.3.</u>		
		Verify Packet Telemetry (Pkt = A86_RMStatus) <p style="text-align: center;">Nom Conf SAS1 AEW2R109 = NOMINAL</p>		AND=ZAAM0999
		Verify Packet Telemetry (Pkt = A86_RMStatus) <p style="text-align: center;">Nom Conf SAS2 AEW2S109 = NOMINAL</p>		AND=ZAAM0999
		Verify Packet Telemetry (Pkt = A86_RMStatus) <p style="text-align: center;">Nom Conf RCS AEW2U109 = RCS-A</p>		AND=ZAAM0999
		Verify Telemetry <p style="text-align: center;">Surv Conf CRS AEW37109 = CRS-2</p>		AND=ZAAM0999
		Verify Packet Telemetry <p style="text-align: center;">Nom Conf Reserv AEW2T109 = <dec></p>		AND=ZAAM0999
		Verify Telemetry <p style="text-align: center;">Reserved AESCE002 = CRS-1</p>		AND=ZAA01999
16.5		Enable RM A		<input type="checkbox"/>

Modify RCS Nominal Configuration
 File: H_CRP_AOC_5NCF.xls
 Author: dsalt-hp



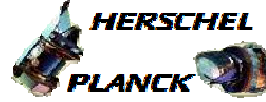
Step No.	Time	Activity/Remarks	TC/TLM	Display/ Branch
		Execute Telecommand <div style="text-align: right;">Ext_ACC_RM_A_Enable</div> TC Control Flags : Subsch. ID : 10 Det. descr. : External ACC RM A Enable - Mission Specific	DCM21170	
		Verify Telemetry <div style="text-align: right;">RMA_fromTTR-RMA AEE91050</div>	= ENABLED	AND=ZAA07999
		Verify Telemetry <div style="text-align: right;">RMA_fromTTR-RMB AEE92050</div>	= ENABLED	AND=ZAA07999
		Verify Telemetry <div style="text-align: right;">RMB_fromTTR-RMA AEE93050</div>	= ENABLED	AND=ZAA07999
		Verify Telemetry <div style="text-align: right;">RMB_fromTTR-RMB AEE94050</div>	= ENABLED	AND=ZAA07999
16.6		Verify RM B Nominal Configuration via Status Report		<input type="checkbox"/>
		Execute Telecommand <div style="text-align: right;">Get RM-B status</div> Command Parameter(s) : <div style="text-align: right;">RMStat DF86Cmd AH841001 Enable 86</div> <div style="text-align: right;">RMStat DD86Cmd AH842001 Enable 86</div> TC Control Flags : Subsch. ID : 20 Det. descr. : TC(8,1) - Get RM-B status	ACZZ5109	
		Verify Packet Reception <div style="text-align: right;">TM 8-6 for RM Status parametrized</div> Packet Details: <div style="text-align: right;">APID: 512</div> <div style="text-align: right;">Type: 8</div> <div style="text-align: right;">Subtype: 6</div> <div style="text-align: right;">PI1: 41600</div> <div style="text-align: right;">PI2: 1</div>	A86_RMStatus	
		NOTE: The following TM values assume a nominal ACMS configuration for the SAS and CRS. <u>If the RM reports an alternate configuration, then the TC in Step 16.8 should be modified accordingly.</u>		
		Verify Packet Telemetry (Pkt = A86_RMStatus) <div style="text-align: right;">Nom Conf SAS1 AEW2R109</div>	= NOMINAL	AND=ZAAM0999
		Verify Packet Telemetry (Pkt = A86_RMStatus) <div style="text-align: right;">Nom Conf SAS2 AEW2S109</div>	= NOMINAL	AND=ZAAM0999

Modify RCS Nominal Configuration
 File: H_CRP_AOC_5NCF.xls
 Author: dsalt-hp



Step No.	Time	Activity/Remarks	TC/TLM	Display/ Branch
		Execute Telecommand <p style="text-align: right;">RMB_SAS1N-2N_CRSx_RCSA</p> Command Parameter(s) : NomConf DF86Cmd AH8N1001 Enable 86 NomConf DD86Cmd AH8N2001 Enable 86 TC Control Flags : <p style="text-align: right;">GBM IL DSE --Y -- ---</p> Subsch. ID : 20 Det. descr. : TC(8,1) Mod Nom Conf - RMB_SAS1N-2N_CRSx_RCSA	ACY68109	
		Verify Telemetry <p style="text-align: right;">Nom Conf SAS AESC002</p>	= SAS12 N	AND=ZAA01999
		Verify Telemetry <p style="text-align: right;">Reserved AESCE002</p>	= CRS-1	AND=ZAA01999
		Verify Telemetry <p style="text-align: right;">Nom Conf RCS AESCF002</p>	= RCS-A	AND=ZAA01999
16.9		Verify RM B Nominal Configuration via Status Report		<input type="checkbox"/>
		Execute Telecommand <p style="text-align: right;">Get RM-B status</p> Command Parameter(s) : RMStat DF86Cmd AH841001 Enable 86 RMStat DD86Cmd AH842001 Enable 86 TC Control Flags : <p style="text-align: right;">GBM IL DSE --Y -- ---</p> Subsch. ID : 20 Det. descr. : TC(8,1) - Get RM-B status	ACZZ5109	
		Verify Packet Reception <p style="text-align: center;">TM 8-6 for RM Status parametrized</p> Packet Details: <p style="text-align: right;">APID: 512 Type: 8 Subtype: 6 PI1: 41600 PI2: 1</p>	A86_RMStatus	
		NOTE: The following TM values assume a nominal ACMS configuration for the SAS and CRS. <u>If the RM reports an alternate configuration, then check that it is coherent with the configuration commanded in Step 16.8.</u>		
		Verify Packet Telemetry (Pkt = A86_RMStatus) <p style="text-align: right;">Nom Conf SAS1 AEW2R109</p>	= NOMINAL	AND=ZAAM0999

Modify RCS Nominal Configuration
 File: H_CRP_AOC_5NCF.xls
 Author: dsalt-hp



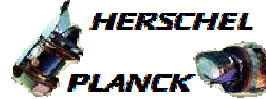
Step No.	Time	Activity/Remarks	TC/TLM	Display/ Branch
17.2		RCS Power Status		<input type="checkbox"/>
		Verify Telemetry CBH_N_L17_S WMA2H565	= ON	AND=WALC1584
		Verify Telemetry CBH_N_L17_I WMA13565	>= 0.0 A <= 0.069 A	AND=WALC1584
		Verify Telemetry CBH_R_L18_S WM12H565	= OFF	AND=WALC1584
		Verify Telemetry CBH_R_L18_I WM113565	= 0.0 A	AND=WALC1584
		Verify Telemetry RcsThrsA_L45_1S WM22D565	= ON	AND=WALC2584
		Verify Telemetry RcsThrsA_L45_2S WM22J565	= ON	AND=WALC2584
		Verify Telemetry RcsThrsA_L45_I WM209565	<A branch consumption should be close to 0 A>	AND=WALC2584
		Verify Telemetry RcsThrsB_L46_1S WM92D565	= ON	AND=WALC2584
		Verify Telemetry RcsThrsB_L46_2S WM92J565	= ON	AND=WALC2584
		Verify Telemetry RcsThrsB_L46_I WM909565	>= 0.0 A <= 3.08 A	AND=WALC2584
		Verify Telemetry RcsLvA_L47_1S WM12E565	= ON	AND=WALC2584
		Verify Telemetry AccLvA_L47_2S WM12J565	= ON	AND=WALC2584
		Verify Telemetry AccLvA_L47_I WM110565	>= 0.0 A <= 0.83 A	AND=WALC2584
		Verify Telemetry AccLvB_L48_1S WMA2E565	= ON	AND=WALC2584
		Verify Telemetry AccLvB_L48_2S WMA2J565	= ON	AND=WALC2584
		Verify Telemetry AccLvB_L48_I WMA10565	>= 0.0 A <= 0.83 A	AND=WALC2584
17.3		Verify Reset of Accumulated Totals		<input type="checkbox"/>

Modify RCS Nominal Configuration
 File: H_CRP_AOC_5NCF.xls
 Author: dsalt-hp



Step No.	Time	Activity/Remarks	TC/TLM	Display/ Branch
		Verify Telemetry A1D1 accu ToT AETAA001	<reset to 0>	AND=ZAA04999
		Verify Telemetry A2D2 accu ToT AETAB001	<reset to 0>	AND=ZAA04999
		Verify Telemetry C1F1 accu ToT AETAC001	<reset to 0>	AND=ZAA04999
		Verify Telemetry C2F2 accu ToT AETAD001	<reset to 0>	AND=ZAA04999
		Verify Telemetry C3U1 accu ToT AETAE001	<reset to 0>	AND=ZAA04999
		Verify Telemetry C4U2 accu ToT AETAF001	<reset to 0>	AND=ZAA04999
18		Disarm Branch B Flow Control Valves		Next Step: 19
		Verify Telemetry RCS2 FCV ARMsts AETF6002	= ARM	AND=ZAA04999
18.1		Disarm FCV for RCS-B		<input type="checkbox"/>
		Execute Telecommand RCS-B FCV Disarm ACZC6109 Command Parameter(s) : RCSCfg DF86 Cmd AH8R3001 Enable 86 RCSCfg DD86 Cmd AH8R4001 Enable 86 TC Control Flags : GBM IL DSE --Y -- -- Subsch. ID : 20 Det. descr. : TC(8,1) Command RCS config - RCS-B FCV Disarm		
		Execute Telecommand Fire Cmd RCS config ACZ2M109 Command Parameter(s) : FireFun DF86Cmd AH8F1001 Enable 86 FireFun DD86Cmd AH8F2001 Enable 86 TC Control Flags : GBM IL DSE --Y -- -- Subsch. ID : 20 Det. descr. : TC(8,4) Fire Command - Fire Cmd RCS config		

Modify RCS Nominal Configuration
 File: H_CRP_AOC_5NCF.xls
 Author: dsalt-hp



Step No.	Time	Activity/Remarks	TC/TLM	Display/ Branch
18.2		Verify status of FCV for RCS-B		<input type="checkbox"/>
		Verify Telemetry RCS2 FCV ARMsts AETF6002	= DISARM	AND=ZAA04999
19		Close Branch B Latch Valve		Next Step: 20
		Verify Telemetry RCS2 LV sts AETF2002	= OPEN	AND=ZAA04999
19.1		Close LV for RCS-B		<input type="checkbox"/>
		Execute Telecommand RCS-B LV CLOSE ACZB4109 Command Parameter(s) : RCSCfg DF86 Cmd AH8R3001 Enable 86 RCSCfg DD86 Cmd AH8R4001 Enable 86 TC Control Flags : GBM IL DSE --Y -- -- Subsch. ID : 20 Det. descr. : TC(8,1) Command RCS config - RCS-B LV CLOSE		
		Execute Telecommand Fire Cmd RCS config ACZ2M109 Command Parameter(s) : FireFun DF86Cmd AH8F1001 Enable 86 FireFun DD86Cmd AH8F2001 Enable 86 TC Control Flags : GBM IL DSE --Y -- -- Subsch. ID : 20 Det. descr. : TC(8,4) Fire Command - Fire Cmd RCS config		
19.2		Verify status of LV for RCS-B		<input type="checkbox"/>
		Verify Telemetry RCS2 LV sts AETF2002	= CLOSED	AND=ZAA04999
20		Switch OFF RCS-B catbed heaters		Next Step: 21
		Verify Telemetry Nom Conf RCS AESCF002	= RCS-A	AND=ZAA01999

Modify RCS Nominal Configuration
 File: H_CRP_AOC_5NCF.xls
 Author: dsalt-hp



Step No.	Time	Activity/Remarks	TC/TLM	Display/ Branch
		Execute Telecommand Fire Cmd RCS config Command Parameter(s) : FireFun DF86Cmd AH8F1001 Enable 86 FireFun DD86Cmd AH8F2001 Enable 86 TC Control Flags : GBM IL DSE --Y -- -- Subsch. ID : 20 Det. descr. : TC(8,4) Fire Command - Fire Cmd RCS config	ACZ2M109	
22.2		Verify status of FCV for RCS-A		<input type="checkbox"/>
		Verify Telemetry RCS1 FCV ARMsts AETF5002	= DISARM	AND=ZAA04999
TC Seq. Name :NULL02 (Null Sequence 02) TimeTag Type: Sub Schedule ID: <input type="checkbox"/>				
23		OPTION: Change RCS Survival configuration		Next Step: END
End of Procedure				