

Modify RCS Nominal Configuration
 File: H_CRP_AOC_5LVC.xls
 Author: dsalt-hp



Procedure Summary

Objectives

The objective of this Herschel ACMS procedure is to modify the RCS LV configuration.

The procedure involves the following activities:

- check initial RCS status and current "nominal" branch
- select LV branch and action
- open LV for the branch to be selected
- close LV of current nominal branch (to be deselected)

Summary of Constraints

1. S/C in a nominal ACMS mode (i.e. SAM/OCM/SCM)
2. Authority from SOM required

Spacecraft Configuration

Start of Procedure

ACMS in a nominal mode (SAM/OCM/SCM)

End of Procedure

ACMS in same mode but selected LV reconfigured

Reference File(s)

Input Command Sequences

Output Command Sequences

HRA5LVCA
 HRA5LVCB
 HRA5LVCC
 HRA5LVCD

Referenced Displays

ANDs	GRDs	SLDs
ZAA01999		
ZAA02999		
ZAA04999		

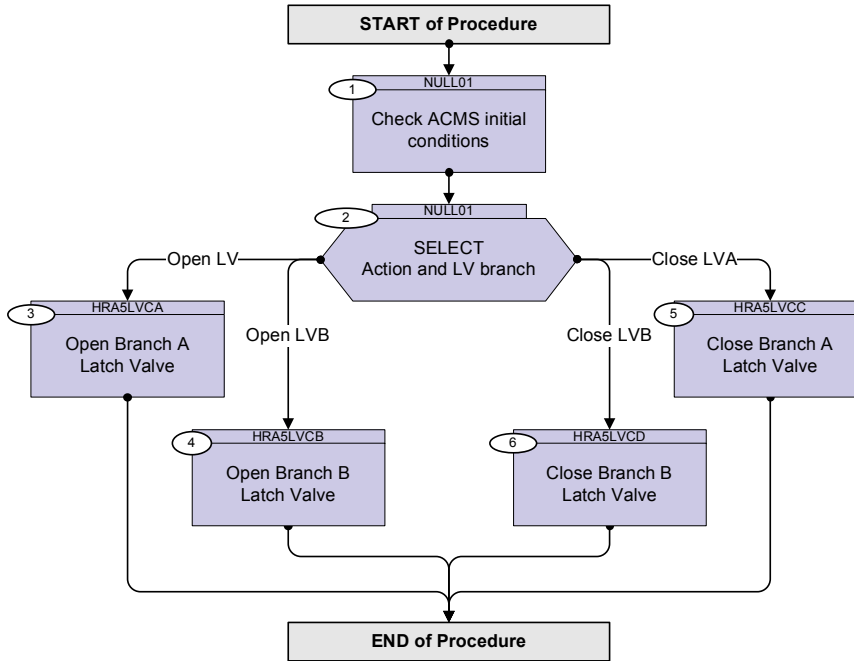
Configuration Control Information

DATE	FOP ISSUE	VERSION	MODIFICATION DESCRIPTION	AUTHOR	SPR REF
24/03/09	2.2	1	Created	dsalt-hp	

Modify RCS Nominal Configuration
File: H_CRP_AOC_5LVC.xls
Author: dsalt-hp



Procedure Flowchart Overview



Modify RCS Nominal Configuration
 File: H_CRP_AOC_5LVC.xls
 Author: dsalt-hp



Step No.	Time	Activity/Remarks	TC/TLM	Display/ Branch
Beginning of Procedure				
TC Seq. Name : NULL01 (Null Sequence 01)				
TimeTag Type: Sub Schedule ID: □				
1		Check ACMS initial conditions		Next Step: 2
1.1		Check ACMS Mode configuration		□
		Verify Telemetry SpacecraftMode AESME002	<to be read>	AND=ZAA01999
		Verify Telemetry AcmsMode AESMG002	<to be read>	AND=ZAA01999
		Verify Telemetry AcmsSubstate AESMF002	<to be read>	AND=ZAA01999
1.2		Check RCS configuration status		□
		Verify Telemetry RcsInUse AESMV002	<to be read>	AND=ZAA01999
		Verify Telemetry Nom Conf RCS AESCF002	<to be read>	AND=ZAA01999
		Verify Telemetry Surv Conf RCS AESCM001	<to be read>	AND=ZAA01999
		Verify Telemetry RCSA Health Sts AESK1002	<to be read>	AND=ZAA02999
		Verify Telemetry RCSB Health Sts AESK2002	<to be read>	AND=ZAA02999
1.3		Check LV status		□
		Verify Telemetry RCS1 LV sts AETF1002	<to be read>	AND=ZAA04999
		Verify Telemetry RCS2 LV sts AETF2002	<to be read>	AND=ZAA04999
2		SELECT Action and LV branch		Next Step: Open LV 3 Open LVB 4 Close LVA 5 Close LVB 6

Modify RCS Nominal Configuration
 File: H_CRP_AOC_5LVC.xls
 Author: dsalt-hp



Step No.	Time	Activity/Remarks	TC/TLM	Display/ Branch
		<i>Based upon the previous checks, plus any additional diagnostic analysis, select LV branch and action</i>		
<p>TC Seq. Name :HRA5LVCA (OpenLV_A)</p> <p>TimeTag Type: Sub Schedule ID:</p> <p><input type="checkbox"/></p>				
3		Open Branch A Latch Valve		Next Step: END
		Verify Telemetry RCS1 LV sts AETF1002	= CLOSED	AND=ZAA04999
3.1		Open LV for RCS-A		<input type="checkbox"/>
		Execute Telecommand RCS-A LV OPEN ACZB1109 Command Parameter(s) : RCSCfg DF86 Cmd AH8R3001 Enable 86 RCSCfg DD86 Cmd AH8R4001 Enable 86 TC Control Flags : GBM IL DSE --Y -- --- Subsch. ID : 20 Det. descr. : TC(8,1) Command RCS config - RCS-A LV OPEN		
		Execute Telecommand Fire Cmd RCS config ACZ2M109 Command Parameter(s) : FireFun DF86Cmd AH8F1001 Enable 86 FireFun DD86Cmd AH8F2001 Enable 86 TC Control Flags : GBM IL DSE --Y -- --- Subsch. ID : 20 Det. descr. : TC(8,4) Fire Command - Fire Cmd RCS config		
3.2		Verify status of LV for RCS-A		<input type="checkbox"/>
		Verify Telemetry RCS1 LV sts AETF1002	= OPEN	AND=ZAA04999

Modify RCS Nominal Configuration
 File: H_CRP_AOC_5LVC.xls
 Author: dsalt-hp



Step No.	Time	Activity/Remarks	TC/TLM	Display/ Branch
5		Close Branch A Latch Valve		Next Step: END
		Verify Telemetry RCS1 LV sts AETF1002	= OPEN	AND=ZAA04999
5.1		Close LV for RCS-A		<input type="checkbox"/>
		Execute Telecommand RCS-A LV CLOSE Command Parameter(s) : RCSCfg DF86 Cmd AH8R3001 Enable 86 RCSCfg DD86 Cmd AH8R4001 Enable 86 TC Control Flags : GBM IL DSE --Y -- --- Subsch. ID : 20 Det. descr. : TC(8,1) Command RCS config - RCS-A LV CLOSE	ACZB2109	
		Execute Telecommand Fire Cmd RCS config Command Parameter(s) : FireFun DF86Cmd AH8F1001 Enable 86 FireFun DD86Cmd AH8F2001 Enable 86 TC Control Flags : GBM IL DSE --Y -- --- Subsch. ID : 20 Det. descr. : TC(8,4) Fire Command - Fire Cmd RCS config	ACZ2M109	
5.2		Verify status of LV for RCS-A		<input type="checkbox"/>
		Verify Telemetry RCS1 LV sts AETF1002	= CLOSED	AND=ZAA04999
<p>TC Seq. Name :HRA5LVCD (CloseLV_B)</p> <p>TimeTag Type: Sub Schedule ID: <input type="checkbox"/></p>				
6		Close Branch B Latch Valve		Next Step: END
		Verify Telemetry RCS2 LV sts AETF2002	= OPEN	AND=ZAA04999

Modify RCS Nominal Configuration
 File: H_CRP_AOC_5LVC.xls
 Author: dsalt-hp



Step No.	Time	Activity/Remarks	TC/TLM	Display/ Branch
6.1		Close LV for RCS-B		<input type="checkbox"/>
		Execute Telecommand <p style="text-align: right;">RCS-B LV CLOSE</p> Command Parameter(s) : RCSCfg DF86 Cmd AH8R3001 Enable 86 RCSCfg DD86 Cmd AH8R4001 Enable 86 TC Control Flags : <p style="text-align: right;">GBM IL DSE --Y -- ---</p> Subsch. ID : 20 Det. descr. : TC(8,1) Command RCS config - RCS-B LV CLOSE	ACZB4109	
		Execute Telecommand <p style="text-align: right;">Fire Cmd RCS config</p> Command Parameter(s) : FireFun DF86Cmd AH8F1001 Enable 86 FireFun DD86Cmd AH8F2001 Enable 86 TC Control Flags : <p style="text-align: right;">GBM IL DSE --Y -- ---</p> Subsch. ID : 20 Det. descr. : TC(8,4) Fire Command - Fire Cmd RCS config	ACZ2M109	
6.2		Verify status of LV for RCS-B		<input type="checkbox"/>
		Verify Telemetry <p style="text-align: right;">RCS2 LV sts AETF2002</p>	= CLOSED	AND-ZAA04999
End of Procedure				