

Command RCS to Coarse pointing
 File: H_CRP_AOC_5F2C.xls
 Author: dsalt-hp



Procedure Summary

Objectives

The objective of this Herschel ACMS contingency procedure is to ensure that the RCS Coarse control mode is always used during stable mode (i.e. non-transient) operations.

The procedure involves the following activities:

- check current ACMS mode and operational status
- check current RCS control mode
- command RCS control mode to Coarse, if necessary

Summary of Constraints

No ACMS mode transition should be underway or scheduled on the MTL

Spacecraft Configuration

Start of Procedure

Unexpected discovery of RCS in Fine control mode

End of Procedure

RCS in Coarse control mode

Reference File(s)

Input Command Sequences

Output Command Sequences

HRA5F2CA

Referenced Displays

ANDs **GRDs** **SLDs**
 ZAA01999
 ZAAL2999

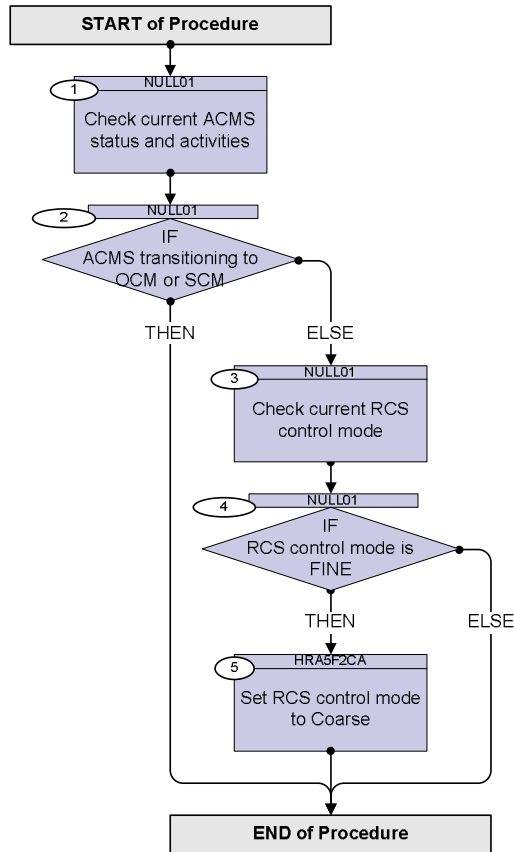
Configuration Control Information

DATE	FOP ISSUE	VERSION	MODIFICATION DESCRIPTION	AUTHOR	SPR REF
09/12/08	2	1	Created	dsalt-hp	
05/03/09	2.1	2	Checked in for FOP update	dsalt-hp	

Command RCS to Coarse pointing
File: H_CRP_AOC_5F2C.xls
Author: dsalt-hp



Procedure Flowchart Overview



Command RCS to Coarse pointing
 File: H_CRP_AOC_5F2C.xls
 Author: dsalt-hp



Step No.	Time	Activity/Remarks	TC/TLM	Display/ Branch
Beginning of Procedure				
TC Seq. Name : NULL01 (Null Sequence 01)				
TimeTag Type: Sub Schedule ID: □				
1		Check current ACMS status and activities		Next Step: 2
		Verify Telemetry SpacecraftMode AESME002	= Nominal	AND=ZAA01999
		Verify Telemetry AcmsMode AESMG002	= OCM = SAM = SCM	AND=ZAA01999
		Check with either the SOM, the ACMS SOE or the SPACON that no activities involving a mode transition are underway or is scheduled on the MTL 1) SAM to OCM 2) OCM to SCM		
2		IF ACMS transitioning to OCM or SCM		Next Step: THEN END ELSE 3
3		Check current RCS control mode		Next Step: 4
		Verify Telemetry AcmsH RCS Mode AEHRM002	= Coarse	AND=ZAAL2999
		WARNING: Staying in SAM or OCM with RCS in Fine pointing will cause severe use of propellant and so end the mission!		
4		IF RCS control mode is FINE		Next Step: THEN 5 ELSE END
TC Seq. Name : HRA5F2CA (RCS to Coarse)				
TimeTag Type: Sub Schedule ID: □				
5		Set RCS control mode to Coarse		Next Step: END

Command RCS to Coarse pointing
 File: H_CRP_AOC_5F2C.xls
 Author: dsalt-hp



Step No.	Time	Activity/Remarks	TC/TLM	Display/ Branch
		Execute Telecommand Set RCS control coarse Command Parameter(s) : RCSCtlSelDF86Cm AH8H1002 RCSCtlSelDD86Cm AH8H2002 TC Control Flags : GBM IL DSE --Y -- --- Subsch. ID : 20 Det. descr. : TC(8,1) - Set RCS control coarse	ACZ7Z109 Enable 86 Enable 86	
		Verify Telemetry AcmsH RCS Mode AEHRM002	= Coarse	AND=ZAAL2999
End of Procedure				