

GYR Electronics reconfiguration
File: H_CRP_AOC_4G01.xls
Author: dsalt-hp



Procedure Summary

Objectives

The objective of this Herschel ACMS contingency procedure is to reconfigure the GYR Electronics.

The procedure involves the following activities:

- verify initial conditions and check GYR-E currently used
- reset GYRE bus RT to Healthy, as necessary
- reset GYRE unit to Healthy, as necessary
- define/enable GYRE DTM packets, as necessary
- flag currently used GYR-E as unhealthy
- wait for GYR-E automatic reconfiguration
- check GYRE in use and declare former GYR-E as healthy
- disable/clear GYRE DTM packets, as necessary

Reconfiguring the GYR electronics means that a period of about 1.5 minutes "GYR-less control" has to be enforced. This is preferred to be done in SCM, as in SAM a coarse GYR data replacement strategy is performed, since the STR does not need to be active (and CRS is not allowed to be used).

Summary of Constraints

1. ACMS mode in SCM
2. AFO mode required
3. GYR-E reconfiguration is not disabled.

Spacecraft Configuration

Start of Procedure

Initial spacecraft configuration:

- ACMS mode in SCM
- FDIR AFO mode
- GYR-E reconfiguration not disabled

End of Procedure

Final spacecraft configuration:

- as initially but with GYR-E reconfigured

Reference File(s)

Input Command Sequences

Output Command Sequences

HRA4G01A
HRA4G01B
HRA4G01C
HRA4G01D
HRA4G01E
HRA4G01F
HRA4G01G
HRA4G01H
HRA4G01J
HRA4G01K

Referenced Displays

GYR Electronics reconfiguration
 File: H_CRP_AOC_4G01.xls
 Author: dsalt-hp



ANDs **GRDs** **SLDs**
 ZAA01999 (None)
 ZAA02999
 ZAZ7S999

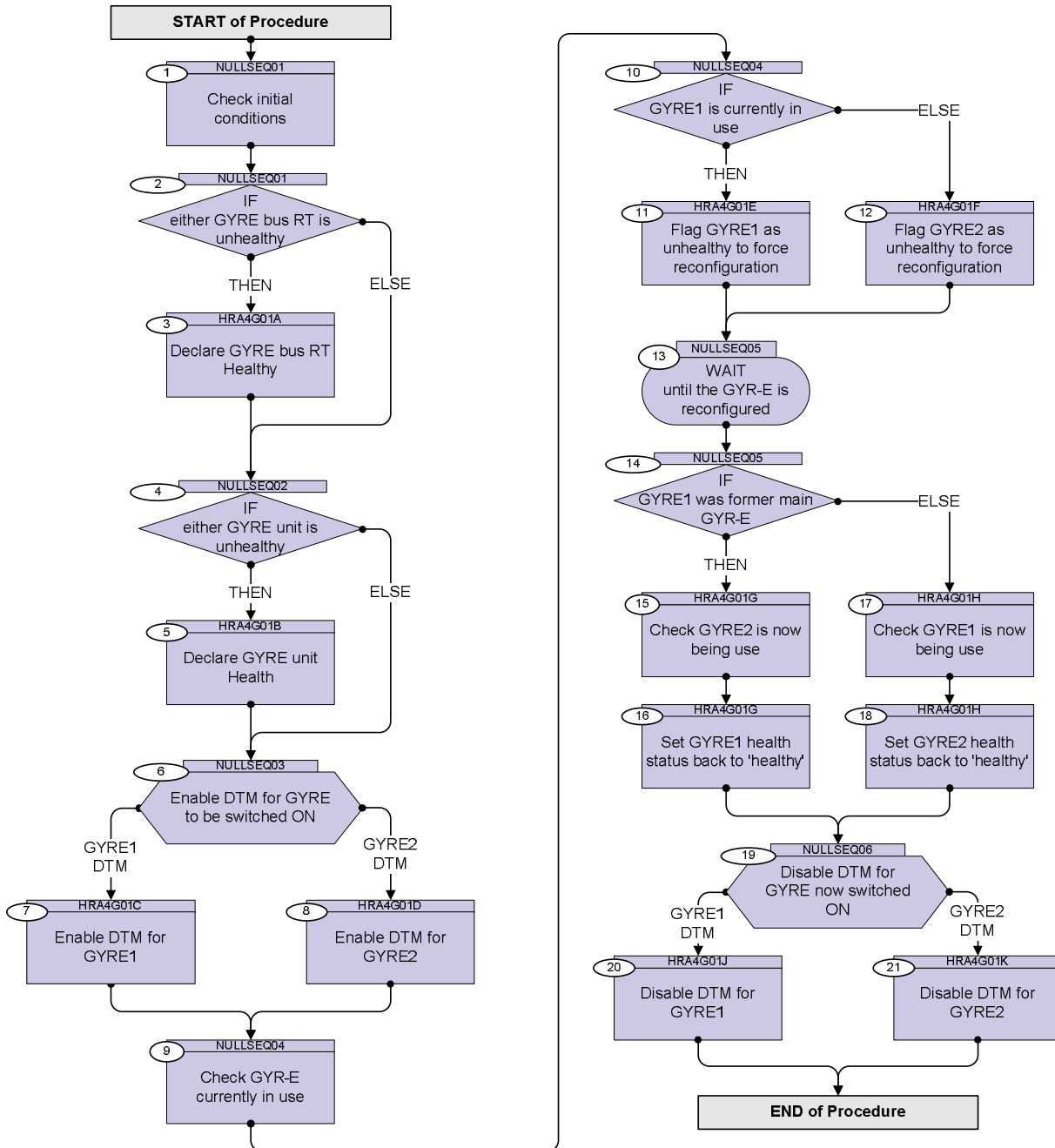
Configuration Control Information

DATE	FOP ISSUE	VERSION	MODIFICATION DESCRIPTION	AUTHOR	SPR REF
01/08/08	1	1	Created	dsalt-hp	
18/12/09		2	TC at Step 5 corrected to command GYRE2 (was GYR2)	dsalt-hp	
07/01/10	3	3	Now includes steps to: - reset health status of bus RT and unit, prior to reconfiguration; - define/enable/disable/clear DTM for each GYRE [Updated after GYRE1 anomaly recovery during DTP219]	dsalt-hp	

GYR Electronics reconfiguration
 File: H_CRP_AOC_4G01.xls
 Author: dsalt-hp



Procedure Flowchart Overview



GYR Electronics reconfiguration
 File: H_CRP_AOC_4G01.xls
 Author: dsalt-hp



Step No.	Time	Activity/Remarks	TC/TLM	Display/ Branch
Beginning of Procedure				
TC Seq. Name : NULLSEQ01 (Null Sequence 01)				
TimeTag Type: N Sub Schedule ID:				
□				
1		Check initial conditions		Next Step: 2
1.1		Check ACMS & Unit status		□
		Verify Telemetry AcmsMode AESMG002	= SCM	AND=ZAA01999
		Verify Telemetry AcmsSubstate AESMF002	= SCM Pointing	AND=ZAA01999
		Verify Telemetry FdirMode AESMJ002	= AFO rcfg ena	AND=ZAA01999
		Verify Telemetry SgmInUse AESMS002	<to be read>	AND=ZAA01999
		Verify Telemetry GYRE reconf ena AESF3002	= Enabled	(None)
		Verify Telemetry GYRE1 Hlth Sts AESK3002	<to be read>	AND=ZAA02999
		Verify Telemetry GYRE2 Hlth Sts AESK4002	<to be read>	AND=ZAA02999
1.2		Check ACMS Data Bus Communication Configuration		□
		Verify Telemetry Comm bus GYRE1 AES77002	<to be read>	AND=ZAA01999
		Verify Telemetry Comm bus GYRE2 AES78002	<to be read>	AND=ZAA01999
1.3		Check ACMS Data Bus Validity Table		□
		Verify Telemetry Val bus GYRE1A AES65002	<to be read>	AND=ZAZ7S999
		Verify Telemetry Val bus GYRE1B AES66002	<to be read>	AND=ZAZ7S999
		Verify Telemetry Val bus GYRE2A AES67002	<to be read>	AND=ZAZ7S999

GYR Electronics reconfiguration
 File: H_CRP_AOC_4G01.xls
 Author: dsalt-hp



Step No.	Time	Activity/Remarks	TC/TLM	Display/ Branch
		Verify Telemetry Val bus GYRE2B AES68002	<to be read>	AND=ZAZ7S999
2		IF either GYRE bus RT is unhealthy		Next Step: THEN 3 ELSE 4
TC Seq. Name :HRA4G01A (GYRE_bus_RT_Healthy) TimeTag Type: Sub Schedule ID: <input type="checkbox"/>				
3		Declare GYRE bus RT Healthy		Next Step: 4
		NOTE: The following TC instances assume both SGM A & B are functional. If this is not the case, the appropriate alternate instance should be selected by filtering for its name (e.g. "GYRE1busA val SGMA") on the Manual Stack's 'Commands' menu.		
		Execute Telecommand <p style="text-align: right;">GYRE1busA val SGMAB</p> Command Parameter(s) : UnHlthDF86 Cmd AHFH1001 Enable 86 UnHlth DD86Cmd AHFH2001 Enable 86 TC Control Flags : <p style="text-align: right;">GBM IL DSE --Y -- --</p> Subsch. ID : 20 Det. descr. : TC(8,1) - GYRE1busA val SGMAB	ACYCV109 Enable 86 Enable 86	
		Execute Telecommand <p style="text-align: right;">GYRE1busB val SGMAB</p> Command Parameter(s) : UnHlthDF86 Cmd AHFH1001 Enable 86 UnHlth DD86Cmd AHFH2001 Enable 86 TC Control Flags : <p style="text-align: right;">GBM IL DSE --Y -- --</p> Subsch. ID : 20 Det. descr. : TC(8,1) - GYRE1busB val SGMAB	ACYCS109 Enable 86 Enable 86	

GYR Electronics reconfiguration
 File: H_CRP_AOC_4G01.xls
 Author: dsalt-hp



Step No.	Time	Activity/Remarks	TC/TLM	Display/ Branch
		Execute Telecommand <p style="text-align: right;">GYRE2busA val SGMAB</p> Command Parameter(s) : UnHlthDF86 Cmd AHFH1001 Enable 86 UnHlth DD86Cmd AHFH2001 Enable 86 TC Control Flags : <p style="text-align: right;">GBM IL DSE --Y -- ---</p> Subsch. ID : 20 Det. descr. : TC(8,1) - GYRE2busA val SGMAB	ACYDW109	
		Execute Telecommand <p style="text-align: right;">GYRE2busB val SGMAB</p> Command Parameter(s) : UnHlthDF86 Cmd AHFH1001 Enable 86 UnHlth DD86Cmd AHFH2001 Enable 86 TC Control Flags : <p style="text-align: right;">GBM IL DSE --Y -- ---</p> Subsch. ID : 20 Det. descr. : TC(8,1) - GYRE2busB val SGMAB	ACYDT109	
		Verify Telemetry <p style="text-align: right;">Val bus GYRE1A AES65002</p>	= Healthy	AND=ZAZ7S999
		Verify Telemetry <p style="text-align: right;">Val bus GYRE1B AES66002</p>	= Healthy	AND=ZAZ7S999
		Verify Telemetry <p style="text-align: right;">Val bus GYRE2A AES67002</p>	= Healthy	AND=ZAZ7S999
		Verify Telemetry <p style="text-align: right;">Val bus GYRE2B AES68002</p>	= Healthy	AND=ZAZ7S999
TC Seq. Name :NULLSEQ02 (Null Sequence 02) TimeTag Type: Sub Schedule ID: <input type="checkbox"/>				
4		IF either GYRE unit is unhealthy		Next Step: THEN 5 ELSE 6
TC Seq. Name :HRA4G01B (GYRE_unit_Healthy) TimeTag Type: Sub Schedule ID: <input type="checkbox"/>				

GYR Electronics reconfiguration
 File: H_CRP_AOC_4G01.xls
 Author: dsalt-hp



Step No.	Time	Activity/Remarks	TC/TLM	Display/ Branch
5		Declare GYRE unit Health		Next Step: 6
		<p>NOTE:</p> <p>The following TC instances assume both SGM A & B are functional.</p> <p>If this is not the case, the appropriate alternate instance should be selected by filtering for its name (e.g. "GYRE1 healthy SGMA") on the Manual Stack's 'Commands' menu.</p>		
		<p>Execute Telecommand</p> <p style="text-align: right;">GYRE1 healthy SGMAB</p> <p>Command Parameter(s) :</p> <p style="padding-left: 40px;">UnHlthDF86 Cmd AHFH1001 Enable 86</p> <p style="padding-left: 40px;">UnHlth DD86Cmd AHFH2001 Enable 86</p> <p>TC Control Flags :</p> <p style="padding-left: 100px;">GBM IL DSE</p> <p style="padding-left: 100px;">--Y -- ---</p> <p>Subsch. ID : 20</p> <p>Det. descr. : TC(8,1) - GYRE1 healthy SGMAB</p>	<p>ACYCU109</p>	
		<p>Execute Telecommand</p> <p style="text-align: right;">GYRE2 healthy SGMAB</p> <p>Command Parameter(s) :</p> <p style="padding-left: 40px;">UnHlthDF86 Cmd AHFH1001 Enable 86</p> <p style="padding-left: 40px;">UnHlth DD86Cmd AHFH2001 Enable 86</p> <p>TC Control Flags :</p> <p style="padding-left: 100px;">GBM IL DSE</p> <p style="padding-left: 100px;">--Y -- ---</p> <p>Subsch. ID : 20</p> <p>Det. descr. : TC(8,1) - GYRE2 healthy SGMAB</p>	<p>ACYDRI09</p>	
		<p>Verify Telemetry</p> <p style="padding-left: 40px;">GYRE1 Hlth Sts AESK3002 = Healthy</p>		AND=ZAA02999
		<p>Verify Telemetry</p> <p style="padding-left: 40px;">GYRE2 Hlth Sts AESK4002 = Healthy</p>		AND=ZAA02999
<p>TC Seq. Name : NULLSEQ03 (Null Sequence 03)</p> <p>TimeTag Type:</p> <p>Sub Schedule ID:</p> <p style="text-align: center;">□</p>				
6		Enable DTM for GYRE to be switched ON		Next Step: GYRE1 DTM 7 GYRE2 DTM 8

GYR Electronics reconfiguration
 File: H_CRP_AOC_4G01.xls
 Author: dsalt-hp



Step No.	Time	Activity/Remarks	TC/TLM	Display/ Branch																																	
<i>TC Seq. Name :HRA4G01C (Enable_GYRE1_DTM)</i>																																					
<i>TimeTag Type:</i> <i>Sub Schedule ID:</i> <input type="checkbox"/>																																					
7		Enable DTM for GYRE1		Next Step: 9																																	
		Execute Telecommand <p style="text-align: center;">DTM GYRE1 1 of 8</p> <i>Command Parameter(s) :</i> <table style="margin-left: 40px;"> <tr><td>HK Packet ID</td><td>XH313990</td><td>226 <dec> (Def)</td></tr> <tr><td>SID</td><td>XH307990</td><td>30057 <dec> (Def)</td></tr> <tr><td>Interval</td><td>XH314990</td><td>4 <dec> (Def)</td></tr> <tr><td>DID number</td><td>XH306990</td><td>17299 <dec> (Def)</td></tr> <tr><td>DID number</td><td>XH306990</td><td>17299 <dec> (Def)</td></tr> <tr><td>DID number</td><td>XH306990</td><td>17299 <dec> (Def)</td></tr> <tr><td>DID number</td><td>XH306990</td><td>17299 <dec> (Def)</td></tr> <tr><td>DID number</td><td>XH306990</td><td>17124 <dec> (Def)</td></tr> <tr><td>DID number</td><td>XH306990</td><td>17124 <dec> (Def)</td></tr> <tr><td>DID number</td><td>XH306990</td><td>17124 <dec> (Def)</td></tr> <tr><td>DID number</td><td>XH306990</td><td>17124 <dec> (Def)</td></tr> </table>	HK Packet ID	XH313990	226 <dec> (Def)	SID	XH307990	30057 <dec> (Def)	Interval	XH314990	4 <dec> (Def)	DID number	XH306990	17299 <dec> (Def)	DID number	XH306990	17299 <dec> (Def)	DID number	XH306990	17299 <dec> (Def)	DID number	XH306990	17299 <dec> (Def)	DID number	XH306990	17124 <dec> (Def)	DID number	XH306990	17124 <dec> (Def)	DID number	XH306990	17124 <dec> (Def)	DID number	XH306990	17124 <dec> (Def)	XC085990	
HK Packet ID	XH313990	226 <dec> (Def)																																			
SID	XH307990	30057 <dec> (Def)																																			
Interval	XH314990	4 <dec> (Def)																																			
DID number	XH306990	17299 <dec> (Def)																																			
DID number	XH306990	17299 <dec> (Def)																																			
DID number	XH306990	17299 <dec> (Def)																																			
DID number	XH306990	17299 <dec> (Def)																																			
DID number	XH306990	17124 <dec> (Def)																																			
DID number	XH306990	17124 <dec> (Def)																																			
DID number	XH306990	17124 <dec> (Def)																																			
DID number	XH306990	17124 <dec> (Def)																																			

GYR Electronics reconfiguration
 File: H_CRP_AOC_4G01.xls
 Author: dsalt-hp



Step No.	Time	Activity/Remarks	TC/TLM	Display/ Branch
		DID number XH306990	17156 <dec> (Def)	
		DID number XH306990	17156 <dec> (Def)	
		DID number XH306990	17157 <dec> (Def)	
		DID number XH306990	17157 <dec> (Def)	
		DID number XH306990	17157 <dec> (Def)	
		DID number XH306990	17157 <dec> (Def)	
		DID number XH306990	17158 <dec> (Def)	
		DID number XH306990	17158 <dec> (Def)	
		DID number XH306990	17158 <dec> (Def)	
		DID number XH306990	17158 <dec> (Def)	
		DID number XH306990	17159 <dec> (Def)	
		DID number XH306990	17159 <dec> (Def)	
		DID number XH306990	17159 <dec> (Def)	
		DID number XH306990	17160 <dec> (Def)	
		DID number XH306990	17160 <dec> (Def)	
		DID number XH306990	17160 <dec> (Def)	
		DID number XH306990	17161 <dec> (Def)	
		DID number XH306990	17161 <dec> (Def)	
		DID number XH306990	17161 <dec> (Def)	
		DID number XH306990	17161 <dec> (Def)	
		DID number XH306990	17162 <dec> (Def)	
		DID number XH306990	17162 <dec> (Def)	
		DID number XH306990	17162 <dec> (Def)	
		DID number XH306990	17162 <dec> (Def)	
		DID number XH306990	17162 <dec> (Def)	
		DID number XH306990	17163 <dec> (Def)	
		DID number XH306990	17163 <dec> (Def)	
		DID number XH306990	17163 <dec> (Def)	

GYR Electronics reconfiguration
 File: H_CRP_AOC_4G01.xls
 Author: dsalt-hp



Step No.	Time	Activity/Remarks	TC/TLM	Display/ Branch
		DID number XH306990	17177 <dec> (Def)	
		DID number XH306990	17177 <dec> (Def)	
		DID number XH306990	17178 <dec> (Def)	
		DID number XH306990	17178 <dec> (Def)	
		DID number XH306990	17178 <dec> (Def)	
		DID number XH306990	17178 <dec> (Def)	
		DID number XH306990	17179 <dec> (Def)	
		DID number XH306990	17179 <dec> (Def)	
		DID number XH306990	17179 <dec> (Def)	
		DID number XH306990	17179 <dec> (Def)	
		DID number XH306990	17180 <dec> (Def)	
		DID number XH306990	17180 <dec> (Def)	
		DID number XH306990	17180 <dec> (Def)	
		DID number XH306990	17180 <dec> (Def)	
		DID number XH306990	17181 <dec> (Def)	
		DID number XH306990	17181 <dec> (Def)	
		DID number XH306990	17181 <dec> (Def)	
		DID number XH306990	17182 <dec> (Def)	
		DID number XH306990	17182 <dec> (Def)	
		DID number XH306990	17182 <dec> (Def)	
		DID number XH306990	17182 <dec> (Def)	
		DID number XH306990	17185 <dec> (Def)	
		DID number XH306990	17185 <dec> (Def)	
		DID number XH306990	17185 <dec> (Def)	
		DID number XH306990	17185 <dec> (Def)	
		DID number XH306990	17186 <dec> (Def)	
		DID number XH306990	17186 <dec> (Def)	
		DID number XH306990	17186 <dec> (Def)	

GYR Electronics reconfiguration
 File: H_CRP_AOC_4G01.xls
 Author: dsalt-hp



Step No.	Time	Activity/Remarks	TC/TLM	Display/ Branch
		DID number XH306990	17198 <dec> (Def)	
		DID number XH306990	17198 <dec> (Def)	
		DID number XH306990	17199 <dec> (Def)	
		DID number XH306990	17199 <dec> (Def)	
		DID number XH306990	17199 <dec> (Def)	
		DID number XH306990	17199 <dec> (Def)	
		DID number XH306990	17200 <dec> (Def)	
		DID number XH306990	17200 <dec> (Def)	
		DID number XH306990	17200 <dec> (Def)	
		DID number XH306990	17200 <dec> (Def)	
		DID number XH306990	17201 <dec> (Def)	
		DID number XH306990	17201 <dec> (Def)	
		DID number XH306990	17201 <dec> (Def)	
		DID number XH306990	17201 <dec> (Def)	
		DID number XH306990	17202 <dec> (Def)	
		DID number XH306990	17202 <dec> (Def)	
		DID number XH306990	17202 <dec> (Def)	
		DID number XH306990	17203 <dec> (Def)	
		DID number XH306990	17203 <dec> (Def)	
		DID number XH306990	17203 <dec> (Def)	
		DID number XH306990	17203 <dec> (Def)	
		DID number XH306990	17204 <dec> (Def)	
		DID number XH306990	17204 <dec> (Def)	
		DID number XH306990	17204 <dec> (Def)	
		DID number XH306990	17205 <dec> (Def)	
		DID number XH306990	17205 <dec> (Def)	
		DID number XH306990	17205 <dec> (Def)	

GYR Electronics reconfiguration
 File: H_CRP_AOC_4G01.xls
 Author: dsalt-hp



Step No.	Time	Activity/Remarks	TC/TLM	Display/ Branch
		DID number XH306990	17219 <dec> (Def)	
		DID number XH306990	17219 <dec> (Def)	
		DID number XH306990	17222 <dec> (Def)	
		DID number XH306990	17222 <dec> (Def)	
		DID number XH306990	17222 <dec> (Def)	
		DID number XH306990	17222 <dec> (Def)	
		DID number XH306990	17223 <dec> (Def)	
		DID number XH306990	17223 <dec> (Def)	
		DID number XH306990	17223 <dec> (Def)	
		DID number XH306990	17223 <dec> (Def)	
		DID number XH306990	17224 <dec> (Def)	
		DID number XH306990	17224 <dec> (Def)	
		DID number XH306990	17224 <dec> (Def)	
		DID number XH306990	17224 <dec> (Def)	
		DID number XH306990	17225 <dec> (Def)	
		DID number XH306990	17225 <dec> (Def)	
		DID number XH306990	17225 <dec> (Def)	
		DID number XH306990	17230 <dec> (Def)	
		DID number XH306990	17230 <dec> (Def)	
		DID number XH306990	17230 <dec> (Def)	
		DID number XH306990	17230 <dec> (Def)	
		DID number XH306990	17298 <dec> (Def)	
		DID number XH306990	17298 <dec> (Def)	
		DID number XH306990	17298 <dec> (Def)	
		DID number XH306990	17298 <dec> (Def)	
		DID number XH306990	17231 <dec> (Def)	
		DID number XH306990	17231 <dec> (Def)	
		DID number XH306990	17231 <dec> (Def)	

GYR Electronics reconfiguration
 File: H_CRP_AOC_4G01.xls
 Author: dsalt-hp



Step No.	Time	Activity/Remarks	TC/TLM	Display/ Branch
		DID number XH306990	17245 <dec> (Def)	
		DID number XH306990	17245 <dec> (Def)	
		DID number XH306990	17246 <dec> (Def)	
		DID number XH306990	17246 <dec> (Def)	
		DID number XH306990	17246 <dec> (Def)	
		DID number XH306990	17246 <dec> (Def)	
		DID number XH306990	17247 <dec> (Def)	
		DID number XH306990	17247 <dec> (Def)	
		DID number XH306990	17247 <dec> (Def)	
		DID number XH306990	17247 <dec> (Def)	
		DID number XH306990	17248 <dec> (Def)	
		DID number XH306990	17248 <dec> (Def)	
		DID number XH306990	17248 <dec> (Def)	
		DID number XH306990	17249 <dec> (Def)	
		DID number XH306990	17249 <dec> (Def)	
		DID number XH306990	17249 <dec> (Def)	
		DID number XH306990	17250 <dec> (Def)	
		DID number XH306990	17250 <dec> (Def)	
		DID number XH306990	17250 <dec> (Def)	
		DID number XH306990	17250 <dec> (Def)	
		DID number XH306990	17251 <dec> (Def)	
		DID number XH306990	17251 <dec> (Def)	
		DID number XH306990	17251 <dec> (Def)	
		DID number XH306990	17251 <dec> (Def)	
		DID number XH306990	17252 <dec> (Def)	
		DID number XH306990	17252 <dec> (Def)	
		DID number XH306990	17252 <dec> (Def)	

GYR Electronics reconfiguration
 File: H_CRP_AOC_4G01.xls
 Author: dsalt-hp



Step No.	Time	Activity/Remarks	TC/TLM	Display/ Branch
		Execute Telecommand DTM GYRE1 6 of 8	XC090990	
		Command Parameter(s) : HK Packet ID XH313990 SID XH307990 Interval XH314990 TC Control Flags : GBM IL DSE --Y -- --- Subsch. ID : 30 Det. descr. : DTM GYRE1	226 <dec> (Def) 30057 <dec> (Def) 4 <dec> (Def)	
		Execute Telecommand DTM GYRE1 7 of 8	XC091990	
		Command Parameter(s) : HK Packet ID XH313990 SID XH307990 Interval XH314990 DID number XH306990 DID number XH306990 DID number XH306990 DID number XH306990 DID number XH306990 DID number XH306990 DID number XH306990 DID number XH306990 DID number XH306990	227 <dec> (Def) 30058 <dec> (Def) 4 <dec> (Def) 17287 <dec> (Def) 17287 <dec> (Def) 17287 <dec> (Def) 17287 <dec> (Def) 17288 <dec> (Def) 17288 <dec> (Def) 17288 <dec> (Def) 17288 <dec> (Def)	

GYR Electronics reconfiguration
 File: H_CRP_AOC_4G01.xls
 Author: dsalt-hp



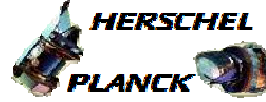
Step No.	Time	Activity/Remarks	TC/TLM	Display/ Branch
		Execute Telecommand <p style="text-align: right;">DTM GYRE1 8 of 8</p> Command Parameter(s) : HK Packet ID XH313990 SID XH307990 Interval XH314990 TC Control Flags : <p style="text-align: right;">GBM IL DSE --Y -- ---</p> Subsch. ID : 30 Det. descr. : DTM GYRE1	XC092990 227 <dec> (Def) 30058 <dec> (Def) 4 <dec> (Def)	
		Execute Telecommand <p style="text-align: right;">Report Diag Report Def</p> Command Parameter(s) : Number of pkts AH3NP109 HK Packet ID AH3PK109 HK Packet ID AH3PK109 TC Control Flags : <p style="text-align: right;">GBM IL DSE --Y -- ---</p> Subsch. ID : 20 Det. descr. : TC(3,11) Report Diagnostic Parameter Report Definitions	AC311109 2 <dec> 226 <dec> 227 <dec>	
		Execute Telecommand <p style="text-align: right;">EnableTmGen</p> Command Parameter(s) : N AH017070 Sub-Type AH019070 Packet-ID AH020070 Sub-Type AH019070 Packet-ID AH020070 TC Control Flags : <p style="text-align: right;">GBM IL DSE --Y -- ---</p> Subsch. ID : 20 Det. descr. : Enable Generation of Telemetry Packets	AC900070 2 <dec> Diag Report 226 <dec> Diag Report 227 <dec>	
		Verify Packet Reception <p style="text-align: right;">DTM GYRE1</p> Packet Details: <p style="text-align: right;">APID: 514 Type: 3 Subtype: 26 PI1: 30057 PI2:</p>	DTMGYRE1	
		Verify Packet Reception <p style="text-align: right;">DTM GYRE1</p> Packet Details: <p style="text-align: right;">APID: 514 Type: 3 Subtype: 26 PI1: 30058 PI2:</p>	DTMGYRE1	

GYR Electronics reconfiguration
 File: H_CRP_AOC_4G01.xls
 Author: dsalt-hp



Step No.	Time	Activity/Remarks	TC/TLM	Display/ Branch																																												
<i>TC Seq. Name :HRA4G01D (Enable_GYRE2_DTM)</i> <i>TimeTag Type:</i> <i>Sub Schedule ID:</i> <input type="checkbox"/>																																																
8		Enable DTM for GYRE2		Next Step: 9																																												
		Execute Telecommand <p style="text-align: center;">DTM GYRE2 1 of 8</p> <i>Command Parameter(s) :</i> <table style="width: 100%; border-collapse: collapse;"> <tr> <td style="width: 30%;">HK Packet ID</td> <td style="width: 20%;">XH313990</td> <td style="width: 20%;">228 <dec> (Def)</td> <td style="width: 30%;"></td> </tr> <tr> <td>SID</td> <td>XH307990</td> <td>30059 <dec> (Def)</td> <td></td> </tr> <tr> <td>Interval</td> <td>XH314990</td> <td>4 <dec> (Def)</td> <td></td> </tr> <tr> <td>DID number</td> <td>XH306990</td> <td>17361 <dec> (Def)</td> <td></td> </tr> <tr> <td>DID number</td> <td>XH306990</td> <td>17361 <dec> (Def)</td> <td></td> </tr> <tr> <td>DID number</td> <td>XH306990</td> <td>17361 <dec> (Def)</td> <td></td> </tr> <tr> <td>DID number</td> <td>XH306990</td> <td>17361 <dec> (Def)</td> <td></td> </tr> <tr> <td>DID number</td> <td>XH306990</td> <td>17362 <dec> (Def)</td> <td></td> </tr> <tr> <td>DID number</td> <td>XH306990</td> <td>17362 <dec> (Def)</td> <td></td> </tr> <tr> <td>DID number</td> <td>XH306990</td> <td>17362 <dec> (Def)</td> <td></td> </tr> <tr> <td>DID number</td> <td>XH306990</td> <td>17362 <dec> (Def)</td> <td></td> </tr> </table>	HK Packet ID	XH313990	228 <dec> (Def)		SID	XH307990	30059 <dec> (Def)		Interval	XH314990	4 <dec> (Def)		DID number	XH306990	17361 <dec> (Def)		DID number	XH306990	17361 <dec> (Def)		DID number	XH306990	17361 <dec> (Def)		DID number	XH306990	17361 <dec> (Def)		DID number	XH306990	17362 <dec> (Def)		DID number	XH306990	17362 <dec> (Def)		DID number	XH306990	17362 <dec> (Def)		DID number	XH306990	17362 <dec> (Def)		XC093990	
HK Packet ID	XH313990	228 <dec> (Def)																																														
SID	XH307990	30059 <dec> (Def)																																														
Interval	XH314990	4 <dec> (Def)																																														
DID number	XH306990	17361 <dec> (Def)																																														
DID number	XH306990	17361 <dec> (Def)																																														
DID number	XH306990	17361 <dec> (Def)																																														
DID number	XH306990	17361 <dec> (Def)																																														
DID number	XH306990	17362 <dec> (Def)																																														
DID number	XH306990	17362 <dec> (Def)																																														
DID number	XH306990	17362 <dec> (Def)																																														
DID number	XH306990	17362 <dec> (Def)																																														

GYR Electronics reconfiguration
 File: H_CRP_AOC_4G01.xls
 Author: dsalt-hp



Step No.	Time	Activity/Remarks	TC/TLM	Display/ Branch
		DID number XH306990	17370 <dec> (Def)	
		DID number XH306990	17370 <dec> (Def)	
		DID number XH306990	17371 <dec> (Def)	
		DID number XH306990	17371 <dec> (Def)	
		DID number XH306990	17371 <dec> (Def)	
		DID number XH306990	17371 <dec> (Def)	
		DID number XH306990	17372 <dec> (Def)	
		DID number XH306990	17372 <dec> (Def)	
		DID number XH306990	17372 <dec> (Def)	
		DID number XH306990	17372 <dec> (Def)	
		DID number XH306990	17372 <dec> (Def)	
		DID number XH306990	17375 <dec> (Def)	
		DID number XH306990	17375 <dec> (Def)	
		DID number XH306990	17375 <dec> (Def)	
		DID number XH306990	17375 <dec> (Def)	
		DID number XH306990	17376 <dec> (Def)	
		DID number XH306990	17376 <dec> (Def)	
		DID number XH306990	17376 <dec> (Def)	
		DID number XH306990	17377 <dec> (Def)	
		DID number XH306990	17377 <dec> (Def)	
		DID number XH306990	17377 <dec> (Def)	
		DID number XH306990	17377 <dec> (Def)	
		DID number XH306990	17378 <dec> (Def)	
		DID number XH306990	17378 <dec> (Def)	
		DID number XH306990	17378 <dec> (Def)	
		DID number XH306990	17378 <dec> (Def)	
		DID number XH306990	17383 <dec> (Def)	
		DID number XH306990	17383 <dec> (Def)	
		DID number XH306990	17383 <dec> (Def)	

GYR Electronics reconfiguration
 File: H_CRP_AOC_4G01.xls
 Author: dsalt-hp



Step No.	Time	Activity/Remarks	TC/TLM	Display/ Branch
		DID number XH306990	17384 <dec> (Def)	
		DID number XH306990	17384 <dec> (Def)	
		DID number XH306990	17384 <dec> (Def)	
		DID number XH306990	17384 <dec> (Def)	
		DID number XH306990	17385 <dec> (Def)	
		DID number XH306990	17385 <dec> (Def)	
		DID number XH306990	17385 <dec> (Def)	
		DID number XH306990	17385 <dec> (Def)	
		DID number XH306990	17386 <dec> (Def)	
		DID number XH306990	17386 <dec> (Def)	
		DID number XH306990	17386 <dec> (Def)	
		DID number XH306990	17386 <dec> (Def)	
		DID number XH306990	17387 <dec> (Def)	
		DID number XH306990	17387 <dec> (Def)	
		DID number XH306990	17387 <dec> (Def)	
		DID number XH306990	17387 <dec> (Def)	
		DID number XH306990	17387 <dec> (Def)	
		DID number XH306990	17387 <dec> (Def)	
		DID number XH306990	17387 <dec> (Def)	
		DID number XH306990	17388 <dec> (Def)	
		DID number XH306990	17388 <dec> (Def)	
		DID number XH306990	17388 <dec> (Def)	
		DID number XH306990	17388 <dec> (Def)	
		DID number XH306990	17388 <dec> (Def)	
		DID number XH306990	17389 <dec> (Def)	
		DID number XH306990	17389 <dec> (Def)	
		DID number XH306990	17389 <dec> (Def)	
		DID number XH306990	17389 <dec> (Def)	
		DID number XH306990	17390 <dec> (Def)	
		DID number XH306990	17390 <dec> (Def)	
		DID number XH306990	17390 <dec> (Def)	
		DID number XH306990	17390 <dec> (Def)	
		DID number XH306990	17391 <dec> (Def)	
		DID number XH306990	17391 <dec> (Def)	

GYR Electronics reconfiguration
 File: H_CRP_AOC_4G01.xls
 Author: dsalt-hp



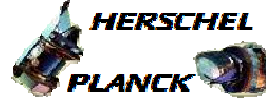
Step No.	Time	Activity/Remarks	TC/TLM	Display/ Branch
		DID number XH306990	17397 <dec> (Def)	
		DID number XH306990	17397 <dec> (Def)	
		DID number XH306990	17398 <dec> (Def)	
		DID number XH306990	17398 <dec> (Def)	
		DID number XH306990	17398 <dec> (Def)	
		DID number XH306990	17398 <dec> (Def)	
		DID number XH306990	17399 <dec> (Def)	
		DID number XH306990	17399 <dec> (Def)	
		DID number XH306990	17399 <dec> (Def)	
		DID number XH306990	17399 <dec> (Def)	
		DID number XH306990	17399 <dec> (Def)	
		DID number XH306990	17400 <dec> (Def)	
		DID number XH306990	17400 <dec> (Def)	
		DID number XH306990	17400 <dec> (Def)	
		DID number XH306990	17400 <dec> (Def)	
		DID number XH306990	17401 <dec> (Def)	
		DID number XH306990	17401 <dec> (Def)	
		DID number XH306990	17401 <dec> (Def)	
		DID number XH306990	17402 <dec> (Def)	
		DID number XH306990	17402 <dec> (Def)	
		DID number XH306990	17402 <dec> (Def)	
		DID number XH306990	17402 <dec> (Def)	
		DID number XH306990	17402 <dec> (Def)	
		DID number XH306990	17403 <dec> (Def)	
		DID number XH306990	17403 <dec> (Def)	
		DID number XH306990	17403 <dec> (Def)	
		DID number XH306990	17403 <dec> (Def)	
		DID number XH306990	17404 <dec> (Def)	
		DID number XH306990	17404 <dec> (Def)	
		DID number XH306990	17404 <dec> (Def)	

GYR Electronics reconfiguration
 File: H_CRP_AOC_4G01.xls
 Author: dsalt-hp



Step No.	Time	Activity/Remarks	TC/TLM	Display/ Branch
		DID number XH306990	17405 <dec> (Def)	
		DID number XH306990	17405 <dec> (Def)	
		DID number XH306990	17405 <dec> (Def)	
		DID number XH306990	17405 <dec> (Def)	
		DID number XH306990	17406 <dec> (Def)	
		DID number XH306990	17406 <dec> (Def)	
		DID number XH306990	17406 <dec> (Def)	
		DID number XH306990	17406 <dec> (Def)	
		DID number XH306990	17407 <dec> (Def)	
		DID number XH306990	17407 <dec> (Def)	
		DID number XH306990	17407 <dec> (Def)	
		DID number XH306990	17407 <dec> (Def)	
		DID number XH306990	17407 <dec> (Def)	
		DID number XH306990	17408 <dec> (Def)	
		DID number XH306990	17408 <dec> (Def)	
		DID number XH306990	17408 <dec> (Def)	
		DID number XH306990	17408 <dec> (Def)	
		DID number XH306990	17408 <dec> (Def)	
		DID number XH306990	17409 <dec> (Def)	
		DID number XH306990	17409 <dec> (Def)	
		DID number XH306990	17409 <dec> (Def)	
		DID number XH306990	17409 <dec> (Def)	
		DID number XH306990	17409 <dec> (Def)	
		DID number XH306990	17412 <dec> (Def)	
		DID number XH306990	17412 <dec> (Def)	
		DID number XH306990	17412 <dec> (Def)	
		DID number XH306990	17412 <dec> (Def)	
		DID number XH306990	17413 <dec> (Def)	
		DID number XH306990	17413 <dec> (Def)	
		DID number XH306990	17413 <dec> (Def)	
		DID number XH306990	17413 <dec> (Def)	
		DID number XH306990	17413 <dec> (Def)	
		DID number XH306990	17414 <dec> (Def)	
		DID number XH306990	17414 <dec> (Def)	

GYR Electronics reconfiguration
 File: H_CRP_AOC_4G01.xls
 Author: dsalt-hp



Step No.	Time	Activity/Remarks	TC/TLM	Display/ Branch
		DID number XH306990	17414 <dec> (Def)	
		DID number XH306990	17414 <dec> (Def)	
		DID number XH306990	17415 <dec> (Def)	
		DID number XH306990	17415 <dec> (Def)	
		DID number XH306990	17415 <dec> (Def)	
		DID number XH306990	17415 <dec> (Def)	
		DID number XH306990	17415 <dec> (Def)	
		DID number XH306990	17420 <dec> (Def)	
		DID number XH306990	17420 <dec> (Def)	
		DID number XH306990	17420 <dec> (Def)	
		DID number XH306990	17420 <dec> (Def)	
		DID number XH306990	17421 <dec> (Def)	
		DID number XH306990	17421 <dec> (Def)	
		DID number XH306990	17421 <dec> (Def)	
		DID number XH306990	17421 <dec> (Def)	
		DID number XH306990	17422 <dec> (Def)	
		DID number XH306990	17422 <dec> (Def)	
		DID number XH306990	17422 <dec> (Def)	
		DID number XH306990	17423 <dec> (Def)	
		DID number XH306990	17423 <dec> (Def)	
		DID number XH306990	17423 <dec> (Def)	
		DID number XH306990	17423 <dec> (Def)	
		DID number XH306990	17423 <dec> (Def)	
		DID number XH306990	17424 <dec> (Def)	
		DID number XH306990	17424 <dec> (Def)	
		DID number XH306990	17424 <dec> (Def)	
		DID number XH306990	17425 <dec> (Def)	
		DID number XH306990	17425 <dec> (Def)	
		DID number XH306990	17425 <dec> (Def)	

GYR Electronics reconfiguration
 File: H_CRP_AOC_4G01.xls
 Author: dsalt-hp



Step No.	Time	Activity/Remarks	TC/TLM	Display/ Branch
		DID number XH306990	17335 <dec> (Def)	
		DID number XH306990	17335 <dec> (Def)	
		DID number XH306990	17335 <dec> (Def)	
		DID number XH306990	17335 <dec> (Def)	
		DID number XH306990	17336 <dec> (Def)	
		DID number XH306990	17336 <dec> (Def)	
		DID number XH306990	17336 <dec> (Def)	
		DID number XH306990	17336 <dec> (Def)	
		DID number XH306990	17346 <dec> (Def)	
		DID number XH306990	17346 <dec> (Def)	
		DID number XH306990	17346 <dec> (Def)	
		DID number XH306990	17347 <dec> (Def)	
		DID number XH306990	17347 <dec> (Def)	
		DID number XH306990	17347 <dec> (Def)	
		DID number XH306990	17347 <dec> (Def)	
		DID number XH306990	17347 <dec> (Def)	
		DID number XH306990	17347 <dec> (Def)	
		DID number XH306990	17347 <dec> (Def)	
		DID number XH306990	17348 <dec> (Def)	
		DID number XH306990	17348 <dec> (Def)	
		DID number XH306990	17348 <dec> (Def)	
		DID number XH306990	17348 <dec> (Def)	
		DID number XH306990	17348 <dec> (Def)	
		DID number XH306990	17349 <dec> (Def)	
		DID number XH306990	17349 <dec> (Def)	
		DID number XH306990	17349 <dec> (Def)	
		DID number XH306990	17349 <dec> (Def)	
		DID number XH306990	17350 <dec> (Def)	
		DID number XH306990	17350 <dec> (Def)	
		DID number XH306990	17350 <dec> (Def)	
		DID number XH306990	17350 <dec> (Def)	
		DID number XH306990	17351 <dec> (Def)	
		DID number XH306990	17351 <dec> (Def)	

GYR Electronics reconfiguration
 File: H_CRP_AOC_4G01.xls
 Author: dsalt-hp



Step No.	Time	Activity/Remarks	TC/TLM	Display/ Branch
		DID number XH306990	17351 <dec> (Def)	
		DID number XH306990	17351 <dec> (Def)	
		DID number XH306990	17352 <dec> (Def)	
		DID number XH306990	17352 <dec> (Def)	
		DID number XH306990	17352 <dec> (Def)	
		DID number XH306990	17352 <dec> (Def)	
		DID number XH306990	17353 <dec> (Def)	
		DID number XH306990	17353 <dec> (Def)	
		DID number XH306990	17353 <dec> (Def)	
		DID number XH306990	17353 <dec> (Def)	
		DID number XH306990	17354 <dec> (Def)	
		DID number XH306990	17354 <dec> (Def)	
		DID number XH306990	17354 <dec> (Def)	
		DID number XH306990	17354 <dec> (Def)	
		DID number XH306990	17355 <dec> (Def)	
		DID number XH306990	17355 <dec> (Def)	
		DID number XH306990	17355 <dec> (Def)	
		DID number XH306990	17356 <dec> (Def)	
		DID number XH306990	17356 <dec> (Def)	
		DID number XH306990	17356 <dec> (Def)	
		DID number XH306990	17356 <dec> (Def)	
		DID number XH306990	17357 <dec> (Def)	
		DID number XH306990	17357 <dec> (Def)	
		DID number XH306990	17357 <dec> (Def)	
		DID number XH306990	17358 <dec> (Def)	
		DID number XH306990	17358 <dec> (Def)	
		DID number XH306990	17358 <dec> (Def)	

GYR Electronics reconfiguration
 File: H_CRP_AOC_4G01.xls
 Author: dsalt-hp



Step No.	Time	Activity/Remarks	TC/TLM	Display/ Branch
		DID number XH306990	17437 <dec> (Def)	
		DID number XH306990	17437 <dec> (Def)	
		DID number XH306990	17438 <dec> (Def)	
		DID number XH306990	17438 <dec> (Def)	
		DID number XH306990	17438 <dec> (Def)	
		DID number XH306990	17438 <dec> (Def)	
		DID number XH306990	17439 <dec> (Def)	
		DID number XH306990	17439 <dec> (Def)	
		DID number XH306990	17439 <dec> (Def)	
		DID number XH306990	17439 <dec> (Def)	
		DID number XH306990	17439 <dec> (Def)	
		DID number XH306990	17440 <dec> (Def)	
		DID number XH306990	17440 <dec> (Def)	
		DID number XH306990	17440 <dec> (Def)	
		DID number XH306990	17440 <dec> (Def)	
		DID number XH306990	17441 <dec> (Def)	
		DID number XH306990	17441 <dec> (Def)	
		DID number XH306990	17441 <dec> (Def)	
		DID number XH306990	17442 <dec> (Def)	
		DID number XH306990	17442 <dec> (Def)	
		DID number XH306990	17442 <dec> (Def)	
		DID number XH306990	17442 <dec> (Def)	
		DID number XH306990	17442 <dec> (Def)	
		DID number XH306990	17443 <dec> (Def)	
		DID number XH306990	17443 <dec> (Def)	
		DID number XH306990	17443 <dec> (Def)	
		DID number XH306990	17443 <dec> (Def)	
		DID number XH306990	17444 <dec> (Def)	
		DID number XH306990	17444 <dec> (Def)	
		DID number XH306990	17444 <dec> (Def)	
		DID number XH306990	17444 <dec> (Def)	

GYR Electronics reconfiguration
 File: H_CRP_AOC_4G01.xls
 Author: dsalt-hp



Step No.	Time	Activity/Remarks	TC/TLM	Display/ Branch
		DID number XH306990	17445 <dec> (Def)	
		DID number XH306990	17445 <dec> (Def)	
		DID number XH306990	17445 <dec> (Def)	
		DID number XH306990	17445 <dec> (Def)	
		DID number XH306990	17446 <dec> (Def)	
		DID number XH306990	17446 <dec> (Def)	
		DID number XH306990	17446 <dec> (Def)	
		DID number XH306990	17446 <dec> (Def)	
		DID number XH306990	17449 <dec> (Def)	
		DID number XH306990	17449 <dec> (Def)	
		DID number XH306990	17449 <dec> (Def)	
		DID number XH306990	17449 <dec> (Def)	
		DID number XH306990	17449 <dec> (Def)	
		DID number XH306990	17450 <dec> (Def)	
		DID number XH306990	17450 <dec> (Def)	
		DID number XH306990	17450 <dec> (Def)	
		DID number XH306990	17450 <dec> (Def)	
		DID number XH306990	17450 <dec> (Def)	
		DID number XH306990	17451 <dec> (Def)	
		DID number XH306990	17451 <dec> (Def)	
		DID number XH306990	17451 <dec> (Def)	
		DID number XH306990	17451 <dec> (Def)	
		DID number XH306990	17451 <dec> (Def)	
		DID number XH306990	17452 <dec> (Def)	
		DID number XH306990	17452 <dec> (Def)	
		DID number XH306990	17452 <dec> (Def)	
		DID number XH306990	17452 <dec> (Def)	
		DID number XH306990	17457 <dec> (Def)	
		DID number XH306990	17457 <dec> (Def)	
		DID number XH306990	17457 <dec> (Def)	
		DID number XH306990	17457 <dec> (Def)	
		DID number XH306990	17458 <dec> (Def)	
		DID number XH306990	17458 <dec> (Def)	
		DID number XH306990	17458 <dec> (Def)	

GYR Electronics reconfiguration
 File: H_CRP_AOC_4G01.xls
 Author: dsalt-hp



Step No.	Time	Activity/Remarks	TC/TLM	Display/ Branch
		DID number XH306990	17458 <dec> (Def)	
		DID number XH306990	17458 <dec> (Def)	
		DID number XH306990	17459 <dec> (Def)	
		DID number XH306990	17459 <dec> (Def)	
		DID number XH306990	17459 <dec> (Def)	
		DID number XH306990	17459 <dec> (Def)	
		DID number XH306990	17459 <dec> (Def)	
		DID number XH306990	17460 <dec> (Def)	
		DID number XH306990	17460 <dec> (Def)	
		DID number XH306990	17460 <dec> (Def)	
		DID number XH306990	17460 <dec> (Def)	
		DID number XH306990	17461 <dec> (Def)	
		DID number XH306990	17461 <dec> (Def)	
		DID number XH306990	17461 <dec> (Def)	
		DID number XH306990	17461 <dec> (Def)	
		DID number XH306990	17462 <dec> (Def)	
		DID number XH306990	17462 <dec> (Def)	
		DID number XH306990	17462 <dec> (Def)	
		DID number XH306990	17463 <dec> (Def)	
		DID number XH306990	17463 <dec> (Def)	
		DID number XH306990	17463 <dec> (Def)	
		DID number XH306990	17463 <dec> (Def)	
		DID number XH306990	17463 <dec> (Def)	
		DID number XH306990	17464 <dec> (Def)	
		DID number XH306990	17464 <dec> (Def)	
		DID number XH306990	17464 <dec> (Def)	
		DID number XH306990	17464 <dec> (Def)	
		DID number XH306990	17465 <dec> (Def)	
		DID number XH306990	17465 <dec> (Def)	
		DID number XH306990	17465 <dec> (Def)	

GYR Electronics reconfiguration
 File: H_CRP_AOC_4G01.xls
 Author: dsalt-hp



Step No.	Time	Activity/Remarks	TC/TLM	Display/ Branch
		Execute Telecommand DTM GYRE2 6 of 8	XC098990	
		Command Parameter(s) : HK Packet ID XH313990 SID XH307990 Interval XH314990 TC Control Flags : GBM IL DSE --Y -- -- Subsch. ID : 30 Det. descr. : DTM GYRE2	228 <dec> (Def) 30059 <dec> (Def) 4 <dec>	
		Execute Telecommand DTM GYRE2 7 of 8	XC099990	
		Command Parameter(s) : HK Packet ID XH313990 SID XH307990 Interval XH314990 DID number XH306990 DID number XH306990 DID number XH306990 DID number XH306990 DID number XH306990 DID number XH306990 DID number XH306990 DID number XH306990 DID number XH306990	229 <dec> (Def) 30060 <dec> (Def) 4 <dec> (Def) 17479 <dec> (Def) 17479 <dec> (Def) 17479 <dec> (Def) 17479 <dec> (Def) 17480 <dec> (Def) 17480 <dec> (Def) 17480 <dec> (Def) 17480 <dec> (Def)	

GYR Electronics reconfiguration
 File: H_CRP_AOC_4G01.xls
 Author: dsalt-hp



Step No.	Time	Activity/Remarks	TC/TLM	Display/ Branch
		Execute Telecommand <p style="text-align: right;">DTM GYRE2 8 of 8</p> Command Parameter(s) : HK Packet ID XH313990 SID XH307990 Interval XH314990 TC Control Flags : <p style="text-align: right;">GBM IL DSE --Y -- ---</p> Subsch. ID : 30 Det. descr. : DTM GYRE2	XC100990 229 <dec> (Def) 30060 <dec> (Def) 4 <dec> (Def)	
		Execute Telecommand <p style="text-align: right;">Report Diag Report Def</p> Command Parameter(s) : Number of pkts AH3NP109 HK Packet ID AH3PK109 HK Packet ID AH3PK109 TC Control Flags : <p style="text-align: right;">GBM IL DSE --Y -- ---</p> Subsch. ID : 20 Det. descr. : TC(3,11) Report Diagnostic Parameter Report Definitions	AC311109 2 <dec> 228 <dec> 229 <dec>	
		Execute Telecommand <p style="text-align: right;">EnableTmGen</p> Command Parameter(s) : N AH017070 Sub-Type AH019070 Packet-ID AH020070 Sub-Type AH019070 Packet-ID AH020070 TC Control Flags : <p style="text-align: right;">GBM IL DSE --Y -- ---</p> Subsch. ID : 20 Det. descr. : Enable Generation of Telemetry Packets	AC900070 2 <dec> Diag Report 228 <dec> Diag Report 229 <dec>	
		Verify Packet Reception <p style="text-align: right;">DTM GYRE2</p> Packet Details: <p style="text-align: right;">APID: 514 Type: 3 Subtype: 26 PI1: 30060 PI2:</p>	DTMGYRE2	
		Verify Packet Reception <p style="text-align: right;">DTM GYRE2</p> Packet Details: <p style="text-align: right;">APID: 514 Type: 3 Subtype: 26 PI1: 30059 PI2:</p>	DTMGYRE2	

GYR Electronics reconfiguration
 File: H_CRP_AOC_4G01.xls
 Author: dsalt-hp



Step No.	Time	Activity/Remarks	TC/TLM	Display/ Branch
TC Seq. Name :HRA4G01F (GYRE2_unit_Unhealthy) TimeTag Type: Sub Schedule ID: <input type="checkbox"/>				
12		Flag GYRE2 as unhealthy to force reconfiguration		Next Step: 13
		NOTE: The following TC instance assumes both SGM A & B are functional. If this is not the case, the appropriate alternate instance should be selected by filtering for its name (e.g. "GYRE2 unhealthy SGMA") on the Manual Stack's 'Commands' menu.		
		Execute Telecommand <p style="text-align: center;">GYRE2 unhealthy SGMAB</p> Command Parameter(s) : UnHlthDF86 Cmd AHFH1001 UnHlth DD86Cmd AHFH2001 TC Control Flags : <p style="text-align: center;">GBM IL DSE --Y -- ---</p> Subsch. ID : 20 Det. descr. : TC(8,1) - GYRE2 unhealthy SGMAB	ACYDS109 Enable 86 Enable 86	
		Verify Telemetry <p style="text-align: center;">GYRE2 Hlth Sts AESK4002</p>	= Unhealthy	AND=ZAA02999
TC Seq. Name :NULLSEQ05 (Null Sequence 05) TimeTag Type: Sub Schedule ID: <input type="checkbox"/>				
13		WAIT until the GYR-E is reconfigured		Next Step: 14
		Control Execution <p style="text-align: center;">0000.01.30.000</p>	WAIT	
14		IF GYRE1 was former main GYR-E		Next Step: THEN 15 ELSE 17

GYR Electronics reconfiguration
 File: H_CRP_AOC_4G01.xls
 Author: dsalt-hp



Step No.	Time	Activity/Remarks	TC/TLM	Display/ Branch
18		Set GYRE2 health status back to 'healthy'		Next Step: 19
		<p>NOTE:</p> <p>The following TC instance assumes both SGM A & B are functional.</p> <p>If this is not the case, the appropriate alternate instance should be selected by filtering for its name (e.g. "GYRE2 unhealthy SGMA") on the Manual Stack's 'Commands' menu.</p>		
		<p>Execute Telecommand</p> <p style="text-align: center;">GYRE2 healthy SGMAB</p> <p>Command Parameter(s) :</p> <p style="padding-left: 40px;">UnHlthDF86 Cmd AHFH1001</p> <p style="padding-left: 40px;">UnHlth DD86Cmd AHFH2001</p> <p>TC Control Flags :</p> <p style="padding-left: 100px;">GBM IL DSE</p> <p style="padding-left: 100px;">--Y -- ---</p> <p>Subsch. ID : 20</p> <p>Det. descr. : TC(8,1) - GYRE2 healthy SGMAB</p>	<p>ACYDR109</p> <p>Enable 86</p> <p>Enable 86</p>	
		<p>Verify Telemetry</p> <p style="text-align: center;">GYRE2 Hlth Sts AESK4002</p>	= Healthy	AND=ZAA02999
<p>TC Seq. Name : NULLSEQ06 (Null Sequence 06)</p> <p>TimeTag Type:</p> <p>Sub Schedule ID:</p> <p style="text-align: center;">□</p>				
19		Disable DTM for GYRE now switched ON		Next Step: GYRE1 DTM 20 GYRE2 DTM 21
<p>TC Seq. Name : HRA4G01J (Disable_GYRE1_DTM)</p> <p>TimeTag Type: N</p> <p>Sub Schedule ID:</p> <p style="text-align: center;">□</p>				
20		Disable DTM for GYRE1		Next Step: END

GYR Electronics reconfiguration
 File: H_CRP_AOC_4G01.xls
 Author: dsalt-hp



Step No.	Time	Activity/Remarks	TC/TLM	Display/ Branch
		Execute Telecommand <p style="text-align: right;">DisableTmGen</p> Command Parameter(s) : N AH017070 Sub-Type AH019070 Packet-ID AH020070 Sub-Type AH019070 Packet-ID AH020070 TC Control Flags : GBM IL DSE --Y -- --- Subsch. ID : 20 Det. descr. : Disable Generation of Telemetry Packets	AC902070	
		Execute Telecommand <p style="text-align: right;">Clear Diagnostic Report</p> Command Parameter(s) : Number of pkts AH3NP109 HK Packet ID AH3PK109 HK Packet ID AH3PK109 TC Control Flags : GBM IL DSE --Y -- --- Subsch. ID : 20 Det. descr. : TC(3,4) Clear Diagnostic Parameter Report Definitions	AC034109	
TC Seq. Name :HRA4G01K (Disable_GYRE2_DTM)				
TimeTag Type: N Sub Schedule ID: □				
21		Disable DTM for GYRE2		Next Step: END
		Execute Telecommand <p style="text-align: right;">DisableTmGen</p> Command Parameter(s) : N AH017070 Sub-Type AH019070 Packet-ID AH020070 Sub-Type AH019070 Packet-ID AH020070 TC Control Flags : GBM IL DSE --Y -- --- Subsch. ID : 20 Det. descr. : Disable Generation of Telemetry Packets	AC902070	

GYR Electronics reconfiguration
 File: H_CRP_AOC_4G01.xls
 Author: dsalt-hp



Step No.	Time	Activity/Remarks	TC/TLM	Display/ Branch
		Execute Telecommand Clear Diagnostic Report Command Parameter(s) : Number of pkts AH3NP109 HK Packet ID AH3PK109 HK Packet ID AH3PK109 TC Control Flags : GBM IL DSE --Y -- --- Subsch. ID : 20 Det. descr. : TC(3,4) Clear Diagnostic Parameter Report Definitions	AC034109 2 <dec> 228 <dec> 229 <dec>	
End of Procedure				