

Select CRS Detection Unit  
 File: H\_CRP\_AOC\_3DET.xls  
 Author: dsalt-hp



## Procedure Summary

### Objectives

This procedure provides the commands and telemetry checks for selecting the CRS unit to be used for rate anomaly detection. It does not include the contingency analysis part, as this is foreseen to be part of the contingency analysis document (reference TBD).

Along with a change of detection unit selection, a change of survival unit selection might be needed. The applicable procedures is H\_CRP\_AOC\_3SUR (Select CRS Survival Unit)

### Summary of Constraints

### Spacecraft Configuration

Start of Procedure

End of Procedure

### Reference File(s)

Input Command Sequences

Output Command Sequences

HRA3DET1  
 HRA3DET2  
 HRA3DET3

### Referenced Displays

ANDs	GRDs	SLDs
ZAA01999		
ZAAM0999		
ZAAM2999		
ZAA07999		

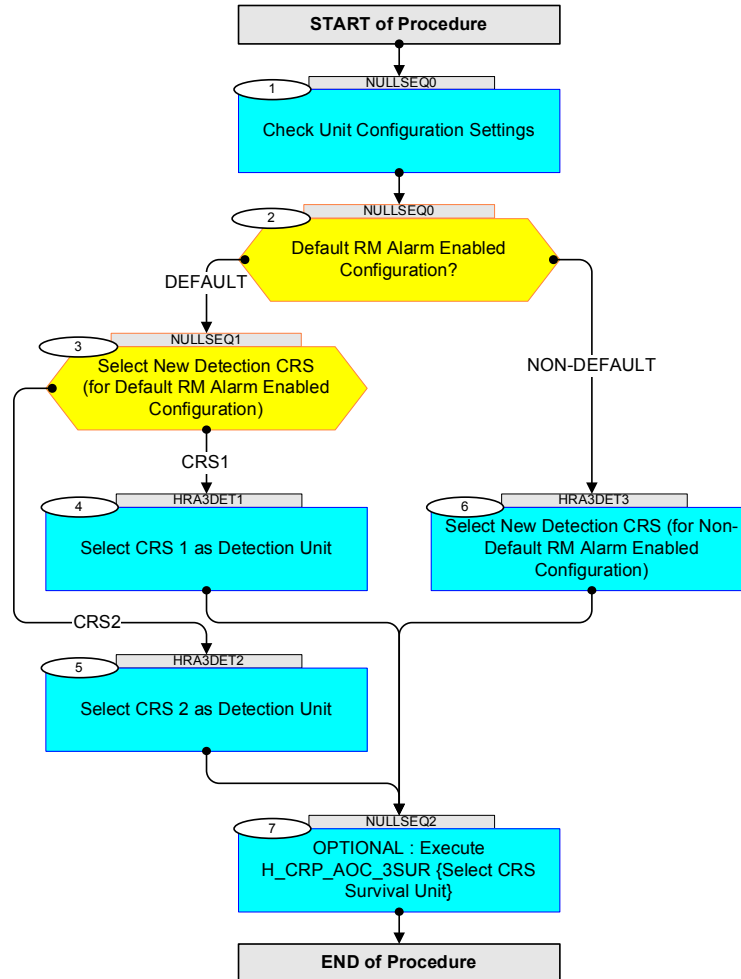
### Configuration Control Information

DATE	FOP ISSUE	VERSION	MODIFICATION DESCRIPTION	AUTHOR	SPR REF
15/01/09	2	1	Created	dsalt-hp	
05/05/09	2.4	2	TCs updated so all have Manual Dispatch flag set to Explicit	dsalt-hp	

Select CRS Detection Unit  
 File: H\_CRP\_AOC\_3DET.xls  
 Author: dsalt-hp



## Procedure Flowchart Overview



Select CRS Detection Unit  
 File: H\_CRP\_AOC\_3DET.xls  
 Author: dsalt-hp



Step No.	Time	Activity/Remarks	TC/TLM	Display/ Branch
<b>Beginning of Procedure</b>				
TC Seq. Name : NULLSEQ0 ( )				
TimeTag Type: Sub Schedule ID:  <input type="checkbox"/>				
1		Check Unit Configuration Settings		Next Step: 2
1.1		Check Nominal Unit Selection		<input type="checkbox"/>
		Verify Telemetry <b>Reserved</b> <b>AESCE002</b>	<b>&lt;to be read&gt;</b>	AND=ZAA01999
1.2		Check Survival Unit Selection		<input type="checkbox"/>
		Verify Telemetry <b>Surv Conf CRS</b> <b>AESCL001</b>	<b>&lt;to be read&gt;</b>	AND=ZAA01999
1.3		Uplink Sequence HFADRM R1		<input type="checkbox"/>
		Execute Sequence <b>HFADRM R1 GetRmAstaStatusReport</b>		
1.3.1		Check Nominal Units Selection		<input type="checkbox"/>
		Verify Telemetry <b>Nom Conf Reserv</b> <b>AEW2T109</b>	<b>&lt;to be read&gt;</b>	AND=ZAAM0999
1.3.2		Check Survival Unit Selection		<input type="checkbox"/>
		Verify Telemetry <b>Surv Conf CRS</b> <b>AEW37109</b>	<b>&lt;to be read&gt;</b>	AND=ZAAM0999
1.3.3		Check Detection Unit Selection		<input type="checkbox"/>
		Verify Telemetry <b>AENSET CRS2</b> <b>AEW5C109</b>	<b>&lt;to be read&gt;</b>	AND=ZAAM2999
		Verify Telemetry <b>AENSET CRS1</b> <b>AEW5B109</b>	<b>&lt;to be read&gt;</b>	AND=ZAAM2999
1.4		Uplink Sequence HFADRM R2		<input type="checkbox"/>

Select CRS Detection Unit  
 File: H\_CRP\_AOC\_3DET.xls  
 Author: dsalt-hp



Step No.	Time	Activity/Remarks	TC/TLM	Display/ Branch
		Execute Sequence HFADRM2 GetRmBstatusReport		
1.4.1		Check Nominal Units Selection		<input type="checkbox"/>
		Verify Telemetry Nom Conf Reserv                      AEW2T109	<to be read>	AND=ZAAM0999
1.4.2		Check Survival Unit Selection		<input type="checkbox"/>
		Verify Telemetry Surv Conf CRS                              AEW37109	<to be read>	AND=ZAAM0999
1.4.3		Check Detection Unit Selection		<input type="checkbox"/>
		Verify Telemetry AENSET CRS2                              AEW5C109	<to be read>	AND=ZAAM2999
		Verify Telemetry AENSET CRS1                              AEW5B109	<to be read>	AND=ZAAM2999
2		Default RM Alarm Enabled Configuration?		Next Step: DEFAULT 3 NON-DEFAULT 6
		Check whether the RM alarm enable/disable configuration is according to the flight defaults (check flight defaults under step 2.1 and/or check table at the end of this procedure), and if:  Flight-default -> GO TO STEP 3  Non-default -> GO TO STEP 6		
2.1		Flight-Default (of RM Alarm Enable/Disable Configuration)		<input type="checkbox"/>
		Verify Telemetry AENSET WD                                      AEW5A109	= ENABLED	AND=ZAAM2999
		Verify Telemetry AENSET CRS1                                      AEW5B109	= ENABLED	AND=ZAAM2999
		Verify Telemetry AENSET CRS2                                      AEW5C109	= DISABLED	AND=ZAAM2999
		Verify Telemetry AENSET CRS3                                      AEW5D109	= DISABLED	AND=ZAAM2999

Select CRS Detection Unit  
 File: H\_CRP\_AOC\_3DET.xls  
 Author: dsalt-hp



Step No.	Time	Activity/Remarks	TC/TLM	Display/ Branch
		Verify Telemetry AENSET AAD1 AEW5E109	= ENABLED	AND=ZAAM2999
		Verify Telemetry AENSET AAD2 AEW5F109	= ENABLED	AND=ZAAM2999
		Verify Telemetry AENSET Strap1 AEW5G109	= ENABLED	AND=ZAAM2999
		Verify Telemetry AENSET Strap2 AEW5H109	= ENABLED	AND=ZAAM2999
		Verify Telemetry AENSET Ext8 AEW5J109	= ENABLED	AND=ZAAM2999
		Verify Telemetry AENSET PMA CPU AEW5K109	= ENABLED	AND=ZAAM2999
		Verify Telemetry AENSET PMACOCOS AEW5L109	= ENABLED	AND=ZAAM2999
		Verify Telemetry AENSET PMA UVD AEW5M109	= ENABLED	AND=ZAAM2999
		Verify Telemetry AENSET PMA SW AEW5N109	= ENABLED	AND=ZAAM2999
		Verify Telemetry AENSET PMB CPU AEW5P109	= ENABLED	AND=ZAAM2999
		Verify Telemetry AENSET PMBCOCOS AEW5R109	= ENABLED	AND=ZAAM2999
		Verify Telemetry AENSET PMB UVD AEW5S109	= ENABLED	AND=ZAAM2999
		Verify Telemetry AENSET PMB SW AEW5T109	= ENABLED	AND=ZAAM2999
		Verify Telemetry AENSET PMSelect AEW5U109	= ENABLED	AND=ZAAM2999
		Verify Telemetry AENSET WDEnable AEW5V109	= ENABLED	AND=ZAAM2999
<p>TC Seq. Name : NULLSEQ1 ( )</p> <p>TimeTag Type:            Sub Schedule ID:  <input type="checkbox"/></p>				
3		Select New Detection CRS (for Default RM Alarm Enabled Configuration)		Next Step: CRS1 4 CRS2 5

Select CRS Detection Unit  
 File: H\_CRP\_AOC\_3DET.xls  
 Author: dsalt-hp



Step No.	Time	Activity/Remarks	TC/TLM	Display/ Branch
		CRS 1 -> GO TO STEP 4 CRS 2 -> GO TO STEP 5		
TC Seq. Name :HRA3DET1 (SelCrslasDetectionUnit)  TimeTag Type: N Sub Schedule ID:  <input type="checkbox"/>				
4		Select CRS 1 as Detection Unit		Next Step: 7
4.1		Uplink Sequence HRA3DET1		<input type="checkbox"/>
4.1.1		Disable RM A		<input type="checkbox"/>
		Execute Telecommand <div style="text-align: right;"><b>Ext_ACC_RM_A_Disable</b></div> TC Control Flags : <div style="text-align: right;">GBM IL DSE --Y -- --</div> Subsch. ID : 10 Det. descr. : External ACC RM A Disable - Mission Specific	DCM22170	
		Verify Telemetry <div style="text-align: right;">RMA_fromTTR-RMA                    AEE91050</div> = DISABLED                    AND=ZAA07999		
		Verify Telemetry <div style="text-align: right;">RMA_fromTTR-RMB                    AEE92050</div> = DISABLED                    AND=ZAA07999		
4.1.2		Set RM Alarm Enable/Disable Configuration		<input type="checkbox"/>
		Execute Telecommand <div style="text-align: right;"><b>Set RMA Alarms</b></div> Command Parameter(s) : <div style="text-align: right;">SetAlarm CRS1                    AHJ82001                    1 &lt;dec&gt; SetAlarm CRS2                    AHJ83001                    0 &lt;dec&gt; SetAlarm CRS3                    AHJ84001                    0 &lt;dec&gt;</div> TC Control Flags : <div style="text-align: right;">GBM IL DSE --Y -- --</div> Subsch. ID : 20 Det. descr. : TC(8,1) SET RM ALARM - Set RMA Alarms	ACZWL109	

Select CRS Detection Unit  
 File: H\_CRP\_AOC\_3DET.xls  
 Author: dsalt-hp



Step No.	Time	Activity/Remarks	TC/TLM	Display/ Branch
		Execute Telecommand  <b>Fire Set RM Alarm</b>  TC Control Flags :  Subsch. ID : 20 Det. descr. : TC(8,4) Fire Command - Fire Set RM Alarm  GBM IL DSE --Y -- --	ACZ5N109	
4.1.3		Verify Update via RM A Status Report		<input type="checkbox"/>
		Execute Telecommand  <b>Get RM-A status</b>  TC Control Flags :  Subsch. ID : 20 Det. descr. : TC(8,1) - Get RM-A status  GBM IL DSE --Y -- --	ACZZ4109	
		Verify Packet Reception <b>TM 8-6 for RM Status parametrized</b> Packet Details:  APID: 512 Type: 8 Subtype: 6 PI1: 41600 PI2: 1	A86_RMStatus	
		Verify Telemetry  <b>AENSET CRS1</b> <b>AEW5B109</b>	= ENABLED	AND=ZAAM2999
		Verify Telemetry  <b>AENSET CRS2</b> <b>AEW5C109</b>	= DISABLED	AND=ZAAM2999
4.1.4		Enable RM A		<input type="checkbox"/>
		Execute Telecommand  <b>Ext_ACC_RM_A_Enable</b>  TC Control Flags :  Subsch. ID : 10 Det. descr. : External ACC RM A Enable - Mission Specific  GBM IL DSE --Y -- --	DCM21170	
		Verify Telemetry  <b>RMA_fromTTR-RMA</b> <b>AEE91050</b>	= ENABLED	AND=ZAA07999
		Verify Telemetry  <b>RMA_fromTTR-RMB</b> <b>AEE92050</b>	= ENABLED	AND=ZAA07999
4.1.5		Disable RM B		<input type="checkbox"/>

Select CRS Detection Unit  
 File: H\_CRP\_AOC\_3DET.xls  
 Author: dsalt-hp



Step No.	Time	Activity/Remarks	TC/TLM	Display/ Branch
		Execute Telecommand  <div style="text-align: right;"><b>Ext_ACC_RM_B_Disable</b></div> TC Control Flags :  <div style="text-align: right;">GBM IL DSE --Y -- ---</div> Subsch. ID : 10 Det. descr. : External ACC RM B Disable - Mission Specific	DCM25170	
		Verify Telemetry  <div style="text-align: right;"><b>RMB_fromTTR-RMA</b>                      <b>AEE93050</b></div>	= DISABLED	AND=ZAA07999
		Verify Telemetry  <div style="text-align: right;"><b>RMB_fromTTR-RMB</b>                      <b>AEE94050</b></div>	= DISABLED	AND=ZAA07999
4.1.6		Set RM Alarm Enable/Disable Configuration		<input type="checkbox"/>
		Execute Telecommand  <div style="text-align: right;"><b>Set RMB Alarms</b></div> Command Parameter(s) : <div style="text-align: right;">SetAlarm CRS1                      <b>AHJ82001</b>            SetAlarm CRS2                      <b>AHJ83001</b>            SetAlarm CRS3                      <b>AHJ84001</b></div> TC Control Flags :  <div style="text-align: right;">GBM IL DSE --Y -- ---</div> Subsch. ID : 20 Det. descr. : TC(8,1) SET RM ALARM - Set RMB Alarms	ACZWT109  1 <dec> 0 <dec> 0 <dec>	
		Execute Telecommand  <div style="text-align: right;"><b>Fire Set RM Alarm</b></div> TC Control Flags :  <div style="text-align: right;">GBM IL DSE --Y -- ---</div> Subsch. ID : 20 Det. descr. : TC(8,4) Fire Command - Fire Set RM Alarm	ACZ5N109	
4.1.7		Verify Update via RM B Status Report		<input type="checkbox"/>
		Execute Telecommand  <div style="text-align: right;"><b>Get RM-B status</b></div> TC Control Flags :  <div style="text-align: right;">GBM IL DSE --Y -- ---</div> Subsch. ID : 20 Det. descr. : TC(8,1) - Get RM-B status	ACZZ5109	





Select CRS Detection Unit  
 File: H\_CRP\_AOC\_3DET.xls  
 Author: dsalt-hp



Step No.	Time	Activity/Remarks	TC/TLM	Display/ Branch
		Execute Telecommand  <b>Ext_ACC_RM_A_Disable</b>  TC Control Flags :  Subsch. ID : 10 Det. descr. : External ACC RM A Disable - Mission Specific GBM IL DSE --Y -- --	DCM22170	
		Verify Telemetry  <b>RMA_fromTTR-RMA</b> <b>AEE91050</b>	= DISABLED	AND=ZAA07999
		Verify Telemetry  <b>RMA_fromTTR-RMB</b> <b>AEE92050</b>	= DISABLED	AND=ZAA07999
5.1.2		Set RM Alarm Enable/Disable Configuration		<input type="checkbox"/>
		Execute Telecommand  <b>Set RMA Alarms</b>  Command Parameter(s) : SetAlarm CRS1                      AHJ82001 SetAlarm CRS2                      AHJ83001 SetAlarm CRS3                      AHJ84001  TC Control Flags :  Subsch. ID : 20 Det. descr. : TC(8,1) SET RM ALARM - Set RMA Alarms GBM IL DSE --Y -- --	ACZWL109  0 <dec> 1 <dec> 0 <dec>	
		Execute Telecommand  <b>Fire Set RM Alarm</b>  TC Control Flags :  Subsch. ID : 20 Det. descr. : TC(8,4) Fire Command - Fire Set RM Alarm GBM IL DSE --Y -- --	ACZ5N109	
5.1.3		Verify Update via RM A Status Report		<input type="checkbox"/>
		Execute Telecommand  <b>Get RM-A status</b>  TC Control Flags :  Subsch. ID : 20 Det. descr. : TC(8,1) - Get RM-A status GBM IL DSE --Y -- --	ACZZ4109	



Select CRS Detection Unit  
 File: H\_CRP\_AOC\_3DET.xls  
 Author: dsalt-hp



Step No.	Time	Activity/Remarks	TC/TLM	Display/ Branch
		Execute Telecommand <p style="text-align: right;"><b>Set RMB Alarms</b></p> Command Parameter(s) : SetAlarm CRS1           AHJ82001       0 <dec> SetAlarm CRS2           AHJ83001       1 <dec> SetAlarm CRS3           AHJ84001       0 <dec>  TC Control Flags : <p style="text-align: right;">GBM IL DSE --Y -- ---</p> Subsch. ID : 20 Det. descr. : TC(8,1) SET RM ALARM - Set RMB Alarms	ACZWT109	
		Execute Telecommand <p style="text-align: right;"><b>Fire Set RM Alarm</b></p> TC Control Flags : <p style="text-align: right;">GBM IL DSE --Y -- ---</p> Subsch. ID : 20 Det. descr. : TC(8,4) Fire Command - Fire Set RM Alarm	ACZ5N109	
5.1.7		Verify Update via RM B Status Report		<input type="checkbox"/>
		Execute Telecommand <p style="text-align: right;"><b>Get RM-B status</b></p> TC Control Flags : <p style="text-align: right;">GBM IL DSE --Y -- ---</p> Subsch. ID : 20 Det. descr. : TC(8,1) - Get RM-B status	ACZZ5109	
		Verify Packet Reception <p style="text-align: center;"><b>TM 8-6 for RM Status parametrized</b></p> Packet Details: <p style="text-align: right;">APID:       512 Type:       8 Subtype:   6 PI1:       41600 PI2:       1</p>	A86_RMStatus	
		Verify Telemetry <p style="text-align: right;"><b>AENSET CRS1           AEW5B109</b></p>	= DISABLED	AND=ZAAM2999
		Verify Telemetry <p style="text-align: right;"><b>AENSET CRS2           AEW5C109</b></p>	= ENABLED	AND=ZAAM2999
5.1.8		Enable RM B		<input type="checkbox"/>

Select CRS Detection Unit  
 File: H\_CRP\_AOC\_3DET.xls  
 Author: dsalt-hp



Step No.	Time	Activity/Remarks	TC/TLM	Display/ Branch
		Execute Telecommand  <div style="text-align: right;"><b>Ext_ACC_RM_B_Enable</b></div> TC Control Flags :  <div style="text-align: right;">GBM IL DSE --Y -- --</div> Subsch. ID : 10 Det. descr. : External ACC RM B Enable - Mission Specific	DCM24170	
		Verify Telemetry  <div style="text-align: right;"><b>RMB_fromTTR-RMA</b>                      <b>AEE93050</b></div>	= ENABLED	AND=ZAA07999
		Verify Telemetry  <div style="text-align: right;"><b>RMB_fromTTR-RMB</b>                      <b>AEE94050</b></div>	= ENABLED	AND=ZAA07999
TC Seq. Name :HRA3DET3 (SelDetCrsForNonDefCf)  TimeTag Type: N Sub Schedule ID: Formal Parameter List : SetAlm WD Togg AenaWdTg= SetAlarm CRS1 AenaCrs1= SetAlarm CRS2 AenaCrs2= SetAlarm CRS3 AenaCrs3= SetAlarm AAD1 AenaAad1= SetAlarm AAD2 AenaAad2= SetAlm SepStr1 AenaSep1= SetAlm SepStr2 AenaSep2= <input type="checkbox"/> SetAlm PMASyEr AenaAcpu=				
SetAlm PMAAlAl AenaAcoc= SetAlarm PMAUnV AenaAuvd= SetAlm PMASwAl AenaAswA= SetAlm PMBSyEr AenaBcpu= SetAlm PMBALAl AenaBcoc= SetAlarm PMBUnV AenaBuvd= SetAlm PMBSwAl AenaBswA= SetAlarm Sel PM AenaPmse= SetAlarm WD Ena AenaWden= <input type="checkbox"/> SetAlm PMBSyEr AeneBcpu=				
6		Select New Detection CRS (for Non-Default RM Alarm Enabled Configuration)		Next Step: 7
6.1		Uplink Sequence HRA3DET3		<input type="checkbox"/>

Select CRS Detection Unit  
 File: H\_CRP\_AOC\_3DET.xls  
 Author: dsalt-hp



Step No.	Time	Activity/Remarks	TC/TLM	Display/ Branch
		<p>When loading this command sequence on the Manual Stack, it will ask you to enter values for the formal parameters inside the sequence. The formal parameters are:</p> <ul style="list-style-type: none"> <li>- <b>AenaWdTg</b> = Watchdog toggle alarm enable/disable status</li> <li>- <b>AenaCrS1</b> = CRS 1 alarm enable/disable status</li> <li>- <b>AenaCrS2</b> = CRS 2 alarm enable/disable status</li> <li>- <b>AenaCrS3</b> = CRS 3 alarm enable/disable status <i>(N.B. CRS3 not applicable on Herschel)</i></li> <li>- <b>AenaAad1</b> = AAD 1 alarm enable/disable status</li> <li>- <b>AenaAad2</b> = AAD 2 alarm enable/disable status</li> <li>- <b>AenaSep1</b> = Separation strap 1 alarm enable/disable status</li> <li>- <b>AenaSep2</b> = Separation strap 2 alarm enable/disable status</li> </ul>		
		<ul style="list-style-type: none"> <li>- <b>AenaAcpu</b> = PM A CPU alarm enable/disable status</li> <li>- <b>AenaAccc</b> = PM A COCOS alarm enable/disable status</li> <li>- <b>AenaAuvd</b> = PM A undervoltage detection alarm enable/disable status</li> <li>- <b>AenaAswA</b> = PM A software alarm enable/disable status</li> <li>- <b>AenaBcpu</b> = PM B CPU alarm enable/disable status</li> <li>- <b>AenaBccc</b> = PM B COCOS alarm enable/disable status</li> <li>- <b>AenaBuvd</b> = PM B undervoltage detection alarm enable/disable status</li> <li>- <b>AenaBswA</b> = PM B software alarm enable/disable status</li> <li>- <b>AenaPmSe</b> = PM select alarm enable/disable status</li> <li>- <b>AenaWdEn</b> = Watchdog enable alarm enable/disable status</li> </ul>		
6.1.1		Disable RM A		<input type="checkbox"/>
		<p>Execute Telecommand</p> <p style="text-align: center;"><b>Ext_ACC_RM_A_Disable</b></p> <p>TC Control Flags :</p> <p style="text-align: center;"><b>GBM IL DSE</b> --Y -- --</p> <p>Subsch. ID : 10          Det. descr. : External ACC RM A Disable - Mission Specific</p>	DCM22170	
		<p>Verify Telemetry</p> <p style="text-align: center;"><b>RMA_fromTTR-RMA                    AEE91050</b></p> <p style="text-align: center;">= DISABLED</p>		AND=ZAA07999
		<p>Verify Telemetry</p> <p style="text-align: center;"><b>RMA_fromTTR-RMB                    AEE92050</b></p> <p style="text-align: center;">= DISABLED</p>		AND=ZAA07999
6.1.2		Set RM Alarm Enable/Disable Configuration		<input type="checkbox"/>

Select CRS Detection Unit  
 File: H\_CRP\_AOC\_3DET.xls  
 Author: dsalt-hp



Step No.	Time	Activity/Remarks	TC/TLM	Display/ Branch
		Execute Telecommand  Set RMA Alarms  Command Parameter(s) : SetAlm WD Togg           AHJ81001           AenaWdTg SetAlarm CRS1           AHJ82001           AenaCrs1 SetAlarm CRS2           AHJ83001           AenaCrs2 SetAlarm CRS3           AHJ84001           AenaCrs3 SetAlarm AAD1           AHJ85001           AenaAad1 SetAlarm AAD2           AHJ86001           AenaAad2 SetAlm SepStr1          AHJ87001           AenaSep1 SetAlm SepStr2          AHJ88001           AenaSep2 SetAlm PMASyEr          AHG82001           AenaAcpu SetAlm PMAAlA1          AHG83001           AenaAcoc SetAlarm PMAUnV          AHG84001           AenaAuvd	ACZWL109	
		SetAlm PMASwAl           AHG85001           AenaAswA SetAlm PMBSyEr          AHG86001           AenaBcpu SetAlm PMBA1A1          AHG87001           AenaBcoc SetAlarm PMBUUnV        AHG88001           AenaBuvd SetAlm PMBSwAl          AHL81001           AenaBswA SetAlarm Sel PM          AHL82001           AenaPmse SetAlarm WD Ena          AHL86001           AenaWden  TC Control Flags :  GBM IL DSE --Y -- ---  Subsch. ID : 20 Det. descr. : TC(8,1) SET RM ALARM - Set RMA Alarms		
		Execute Telecommand  Fire Set RM Alarm  TC Control Flags :  GBM IL DSE --Y -- ---  Subsch. ID : 20 Det. descr. : TC(8,4) Fire Command - Fire Set RM Alarm	ACZ5N109	
6.1.3		Verify Update via RM A Status Report		<input type="checkbox"/>
		Execute Telecommand  Get RM-A status  TC Control Flags :  GBM IL DSE --Y -- ---  Subsch. ID : 20 Det. descr. : TC(8,1) - Get RM-A status	ACZZ4109	
		Verify Packet Reception TM 8-6 for RM Status parametrized Packet Details:  APID:       512 Type:         8 Subtype:     6 PI1:         41600 PI2:         1	A86_RMstatus	

Select CRS Detection Unit  
 File: H\_CRP\_AOC\_3DET.xls  
 Author: dsalt-hp



Step No.	Time	Activity/Remarks	TC/TLM	Display/ Branch
		Verify Telemetry AENSET WD AEW5A109	<user defined setting>	AND=ZAAM2999
		Verify Telemetry AENSET CRS1 AEW5B109	<user defined setting>	AND=ZAAM2999
		Verify Telemetry AENSET CRS2 AEW5C109	<user defined setting>	AND=ZAAM2999
		Verify Telemetry AENSET CRS3 AEW5D109	<user defined setting>	AND=ZAAM2999
		Verify Telemetry AENSET AAD1 AEW5E109	<user defined setting>	AND=ZAAM2999
		Verify Telemetry AENSET AAD2 AEW5F109	<user defined setting>	AND=ZAAM2999
		Verify Telemetry AENSET Strap1 AEW5G109	<user defined setting>	AND=ZAAM2999
		Verify Telemetry AENSET Strap2 AEW5H109	<user defined setting>	AND=ZAAM2999
		Verify Telemetry AENSET Ext8 AEW5J109	<user defined setting>	AND=ZAAM2999
		Verify Telemetry AENSET PMA CPU AEW5K109	<user defined setting>	AND=ZAAM2999
		Verify Telemetry AENSET PMACOCOS AEW5L109	<user defined setting>	AND=ZAAM2999
		Verify Telemetry AENSET PMA UVD AEW5M109	<user defined setting>	AND=ZAAM2999
		Verify Telemetry AENSET PMA SW AEW5N109	<user defined setting>	AND=ZAAM2999
		Verify Telemetry AENSET PMB CPU AEW5P109	<user defined setting>	AND=ZAAM2999
		Verify Telemetry AENSET PMBCOCOS AEW5R109	<user defined setting>	AND=ZAAM2999





Select CRS Detection Unit  
 File: H\_CRP\_AOC\_3DET.xls  
 Author: dsalt-hp



Step No.	Time	Activity/Remarks	TC/TLM	Display/ Branch
		Execute Telecommand  <p style="text-align: center;"><b>Set RMB Alarms</b></p> <i>Command Parameter(s) :</i> SetAlm WD Togg            AHJ81001            AenaWdTg SetAlarm CRS1            AHJ82001            AenaCrs1 SetAlarm CRS2            AHJ83001            AenaCrs2 SetAlarm CRS3            AHJ84001            AenaCrs3 SetAlarm AAD1            AHJ85001            AenaAad1 SetAlarm AAD2            AHJ86001            AenaAad2 SetAlm SepStr1            AHJ87001            AenaSep1 SetAlm SepStr2            AHJ88001            AenaSep2 SetAlm PMASyEr            AHG82001            AenaAcpu SetAlm PMAAlA1            AHG83001            AenaAcoc SetAlarm PMAUnV            AHG84001            AenaAuvd	ACZWT109	
		SetAlm PMASwAl            AHG85001            AenaAswA SetAlm PMBSyEr            AHG86001            AeneBcpu SetAlm PMBA1A1            AHG87001            AenaBcoc SetAlarm PMBUnV            AHG88001            AenaBuvd SetAlm PMBSwAl            AHL81001            AenaBswA SetAlarm Sel PM            AHL82001            AenaPmse SetAlarm WD Ena            AHL86001            AenaWden  <i>TC Control Flags :</i>  <p style="text-align: center;">GBM IL DSE            --Y -- ---</p> <i>Subsch. ID : 20</i> Det. descr. : TC(8,1) SET RM ALARM - Set RMB Alarms		
		Execute Telecommand  <p style="text-align: center;"><b>Fire Set RM Alarm</b></p> <i>TC Control Flags :</i>  <p style="text-align: center;">GBM IL DSE            --Y -- ---</p> <i>Subsch. ID : 20</i> Det. descr. : TC(8,4) Fire Command - Fire Set RM Alarm	ACZ5N109	
6.1.7		Verify Update via RM B Status Report		<input type="checkbox"/>
		Execute Telecommand  <p style="text-align: center;"><b>Get RM-B status</b></p> <i>TC Control Flags :</i>  <p style="text-align: center;">GBM IL DSE            --Y -- ---</p> <i>Subsch. ID : 20</i> Det. descr. : TC(8,1) - Get RM-B status	ACZZ5109	
		Verify Packet Reception <p style="text-align: center;"><b>TM 8-6 for RM Status parametrized</b></p> <i>Packet Details:</i>  <p style="text-align: right;">APID:            512            Type:            8            Subtype:        6            PII:            41600            PI2:            1</p>	A86_RMstatus	

Select CRS Detection Unit  
 File: H\_CRP\_AOC\_3DET.xls  
 Author: dsalt-hp



Step No.	Time	Activity/Remarks	TC/TLM	Display/ Branch
		Verify Telemetry AENSET WD AEW5A109	<user defined setting>	AND=ZAAM2999
		Verify Telemetry AENSET CRS1 AEW5B109	<user defined setting>	AND=ZAAM2999
		Verify Telemetry AENSET CRS2 AEW5C109	<user defined setting>	AND=ZAAM2999
		Verify Telemetry AENSET CRS3 AEW5D109	<user defined setting>	AND=ZAAM2999
		Verify Telemetry AENSET AAD1 AEW5E109	<user defined setting>	AND=ZAAM2999
		Verify Telemetry AENSET AAD2 AEW5F109	<user defined setting>	AND=ZAAM2999
		Verify Telemetry AENSET Strap1 AEW5G109	<user defined setting>	AND=ZAAM2999
		Verify Telemetry AENSET Strap2 AEW5H109	<user defined setting>	AND=ZAAM2999
		Verify Telemetry AENSET Ext8 AEW5J109	<user defined setting>	AND=ZAAM2999
		Verify Telemetry AENSET PMA CPU AEW5K109	<user defined setting>	AND=ZAAM2999
		Verify Telemetry AENSET PMACOCOS AEW5L109	<user defined setting>	AND=ZAAM2999
		Verify Telemetry AENSET PMA UVD AEW5M109	<user defined setting>	AND=ZAAM2999
		Verify Telemetry AENSET PMA SW AEW5N109	<user defined setting>	AND=ZAAM2999
		Verify Telemetry AENSET PMB CPU AEW5P109	<user defined setting>	AND=ZAAM2999
		Verify Telemetry AENSET PMBCOCOS AEW5R109	<user defined setting>	AND=ZAAM2999



Select CRS Detection Unit  
 File: H\_CRP\_AOC\_3DET.xls  
 Author: dsalt-hp



**Tables & Figures**

No.	Alarm	Default Alarm Enable/Disable Configuration for Flight	
		Raw	Calibrated
(00)	Watchdog Toggle	1	Enabled
(01)	CRS 1	1	Enabled
(02)	CRS 2	0	Disabled
(03)	CRS 3	0	Disabled
(04)	AAD 1	1	Enabled
(05)	AAD 2	1	Enabled
(06)	Separation Strap 1	1	Enabled
(07)	Separation Strap 2	1	Enabled
(08)	External 8	1	Enabled
(09)	PM A CPU	1	Enabled
(10)	PM A COCOS	1	Enabled
(11)	PM A Under-Voltage Detection	1	Enabled
(12)	PM A Software Alarm	1	Enabled
(13)	PM B CPU	1	Enabled
(14)	PM B COCOS	1	Enabled
(15)	PM B Under-Voltage Detection	1	Enabled
(16)	PM B Software Alarm	1	Enabled
(17)	PM Select	1	Enabled
(18)	Unused	1	Enabled
(19)	Unused	1	Enabled
(20)	Unused	1	Enabled
(21)	Watchdog Enable	1	Enabled
(22)	Unused	0	Disabled
(23)	Unused	0	Disabled
(24)	Unused	0	Disabled
(25)	Unused	0	Disabled
(26)	Unused	0	Disabled
(27)	Unused	0	Disabled
(28)	Unused	0	Disabled
(29)	Unused	0	Disabled
(30)	Unused	0	Disabled
(31)	Unused	0	Disabled

Table 1 : Default Alarm Enable/Disable Configuration for Flight