

SPIRE-CP-START-SPEC-DATA  
 File: H\_COP\_SPI\_SPDG.xls  
 Author: L.Lucas-hp



## Procedure Summary

### Objectives

This is an auxillary procedure. This procedure will start Spectrometer detector data generation.

Based on procedure: SPIRE-CP-START-SPEC-DATA  
 Name:StartSpecData  
 Version number:1  
 Generated:27/03/2009

### Summary of Constraints

### Spacecraft Configuration

Start of Procedure

End of Procedure

### Reference File(s)

Input Command Sequences

Output Command Sequences  
 HCSSPDG

### Referenced Displays

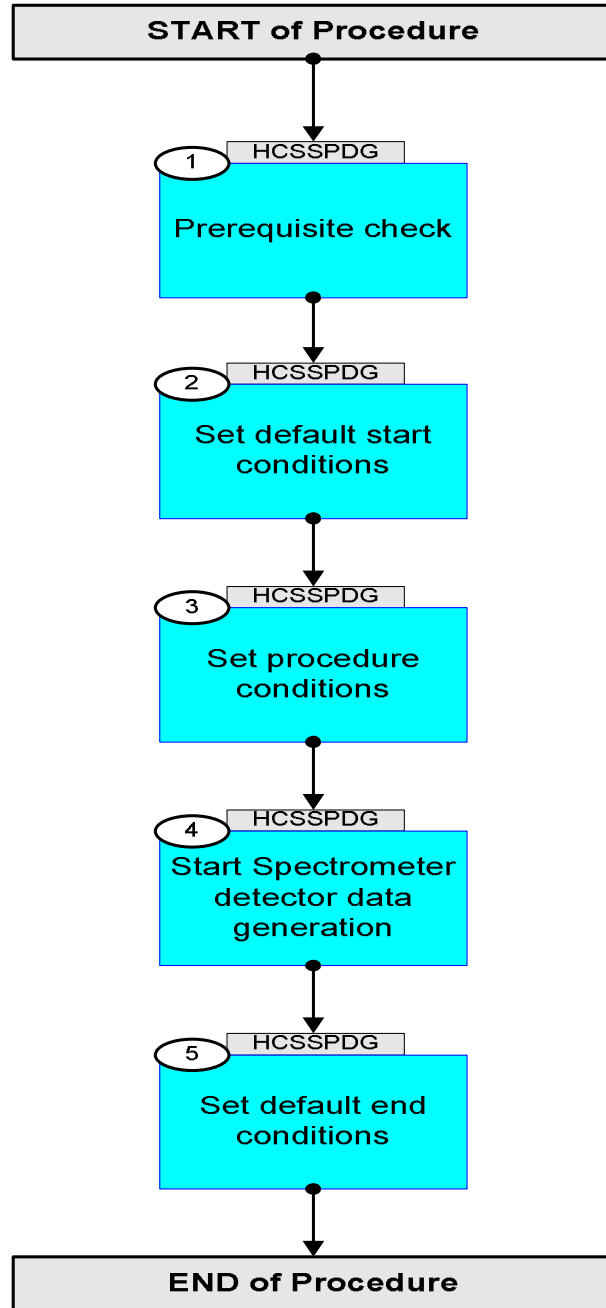
ANDs      GRDs      SLDs  
 ZAZ90999

### Configuration Control Information

DATE	FOP ISSUE	VERSION	MODIFICATION DESCRIPTION	AUTHOR	SPR REF
20/04/09	2.3	1	Created	L.Lucas-hp	
05/05/09	2.4	2	Remove ET	L.Lucas-hp	



### Procedure Flowchart Overview



SPIRE-CP-START-SPEC-DATA  
 File: H\_COP\_SPI\_SPDG.xls  
 Author: L.Lucas-hp



Step No.	Time	Activity/Remarks	TC/TLM	Display/ Branch
<b>Beginning of Procedure</b>				
TC Seq. Name : HCSSPDG (Start SPEC Data Gen)				
TimeTag Type: Y Sub Schedule ID: <input type="checkbox"/>				
1		Prerequisite check		Next Step: 2
1.1		HSC/ICC input		<input type="checkbox"/>
		Verify that the HSC has supplied a valid OBSID value:  OBS_ID = 0xnnnn nnnn		
2		Set default start conditions		Next Step: 3
		Note that a <b>TM(5,1)</b> packet [New_Step_Report] is generated after each of the following SET_OBS_STEP telecommands		
	ET=+ UT=+00.00.00	SET_OBS_STEP  Command Parameter(s) : OBSERVATION_STEP SP03N500  Subsch. ID : 370 Det. descr. : SET OBSERVATION STEP	SET_OBS_STEP  SC003500  0 <hex>	
	ET=+ UT=+00.00.01	SET_BBID  Command Parameter(s) : BUILDING_BLOCK_ID SP01N500  Subsch. ID : 370 Det. descr. : SET BUILDING BLOCK IDENTIFIER	SET_BBID  SC001500  80010001 <hex>	
		Verify Telemetry  BBFULLTYPE SM2LN500	= ClearObs	AND=ZAZ90999
	ET=+ UT=+00.00.00	SET_OBS_STEP  Command Parameter(s) : OBSERVATION_STEP SP03N500  Subsch. ID : 370 Det. descr. : SET OBSERVATION STEP	SET_OBS_STEP  SC003500  1 <hex>	

SPIRE-CP-START-SPEC-DATA  
 File: H\_COP\_SPI\_SPDG.xls  
 Author: L.Lucas-hp



Step No.	Time	Activity/Remarks	TC/TLM	Display/ Branch	
	ET=+ UT=+00.00.01	SET_OBSID  Command Parameter(s) : OBSERVATION_ID  Subsch. ID : 370 Det. descr. : SET OBSERVATION IDENTIFIER	SET_OBSID  SP00N500  00000000 <hex>	SC000500	
		Verify Telemetry  OBSID  SM10N500	= 00000000 <hex>	AND=ZAZ90999	
	ET=+ UT=+00.00.00	SET_OBS_STEP  Command Parameter(s) : OBSERVATION_STEP  Subsch. ID : 370 Det. descr. : SET OBSERVATION STEP	SET_OBS_STEP  SP03N500  0 <hex>	SC003500	
	ET=+ UT=+00.00.01	SET_BBID  Command Parameter(s) : BUILDING_BLOCK_ID  Subsch. ID : 370 Det. descr. : SET BUILDING BLOCK IDENTIFIER	SET_BBID  SP01N500  80000000 <hex>	SC001500	
		Verify Telemetry  BBFULLTYPE  SM2LN500	= Null	AND=ZAZ90999	
	ET=+ UT=+00.00.00	SET_OBS_STEP  Command Parameter(s) : OBSERVATION_STEP  Subsch. ID : 370 Det. descr. : SET OBSERVATION STEP	SET_OBS_STEP  SP03N500  0 <hex>	SC003500	
	ET=+ UT=+00.00.01	SET_BBID  Command Parameter(s) : BUILDING_BLOCK_ID  Subsch. ID : 370 Det. descr. : SET BUILDING BLOCK IDENTIFIER	SET_BBID  SP01N500  80020001 <hex>	SC001500	
		Verify Telemetry  BBFULLTYPE  SM2LN500	= StartObs	AND=ZAZ90999	
3		Set procedure conditions		Next Step: 4	

SPIRE-CP-START-SPEC-DATA  
 File: H\_COP\_SPI\_SPDG.xls  
 Author: L.Lucas-hp



Step No.	Time	Activity/Remarks	TC/TLM	Display/ Branch
	ET=+ UT=+00.00.00	RESET_DRCU_COUNTERS  Subsch. ID : 370 Det. descr. : RESET DRCU COUNTERS	SCD00505	
		Verify that the TRESET parameter has the same value as the THSK parameter  TRESET SM01T500	same as THSK	AND=ZAZ90999
		THSK SM00T500	any	AND=ZAZ90999
		Note that a <b>TM(5,1)</b> packet [New_Step_Report] is generated after each of the following SET_OBS_STEP telecommands		
	ET=+ UT=+00.00.00	SET_OBS_STEP  Command Parameter(s) : OBSERVATION_STEP SP03N500  Subsch. ID : 370 Det. descr. : SET OBSERVATION STEP	SC003500  1 <hex>	
	ET=+ UT=+00.00.01	SET_OBSID  Command Parameter(s) : OBSERVATION_ID SP00N500  Subsch. ID : 370 Det. descr. : SET OBSERVATION IDENTIFIER	SC000500  OBS_ID	
		Verify Telemetry  OBSID SM10N500	OBS_ID	AND=ZAZ90999
	ET=+ UT=+00.00.00	SET_OBS_STEP  Command Parameter(s) : OBSERVATION_STEP SP03N500  Subsch. ID : 370 Det. descr. : SET OBSERVATION STEP	SC003500  0 <hex>	
	ET=+ UT=+00.00.01	SET_BBID  Command Parameter(s) : BUILDING_BLOCK_ID SP01N500  Subsch. ID : 370 Det. descr. : SET BUILDING BLOCK IDENTIFIER	SC001500  80000000 <hex>	
		Verify Telemetry  BBFULLTYPE SM2LN500	= Null	AND=ZAZ90999

SPIRE-CP-START-SPEC-DATA  
 File: H\_COP\_SPI\_SPDG.xls  
 Author: L.Lucas-hp



Step No.	Time	Activity/Remarks	TC/TLM	Display/ Branch
	ET=+ UT=+00.00.00	SET_OBS_STEP  SET_OBS_STEP  Command Parameter(s) : OBSERVATION_STEP                    SP03N500  TC Control Flags :  GBM IL DSE --Y -- ---  Subsch. ID : 370 Det. descr. : SET OBSERVATION STEP	SC003500  0 <hex>	
	ET=+ UT=+00.00.01	SET_BBID  SET_BBID  Command Parameter(s) : BUILDING_BLOCK_ID                    SP01N500  Subsch. ID : 370 Det. descr. : SET BUILDING BLOCK IDENTIFIER	SC001500  88350001 <hex>	
		Verify Telemetry  BBFULLTYPE                    SM2LN500	= Start_DCU_Data	AND=ZAZ90999
4		Start Spectrometer detector data generation		Next Step: 5
		No TM checks are required for this commanding.		
	ET=+ UT=+00.00.01	SET_OBS_STEP  SET_OBS_STEP  Command Parameter(s) : OBSERVATION_STEP                    SP03N500  TC Control Flags :  GBM IL DSE --Y -- ---  Subsch. ID : 370 Det. descr. : SET OBSERVATION STEP	SC003500  1 <hex>	
	ET=+ UT=+00.00.01	SEND_DRCU_COMMAND  SEND_DRCU_COMMAND  Command Parameter(s) : DRCUCOMMAND                    SPD4N505 OVERRIDE                    SPD9N505  TC Control Flags :  GBM IL DSE --- -- ---  Subsch. ID : 370 Det. descr. : SEND A SINGLE COMMAND TO THE DRCU	SCD06505  843d0000 <hex> 0 <hex> (Def)	

SPIRE-CP-START-SPEC-DATA  
 File: H\_COP\_SPI\_SPDG.xls  
 Author: L.Lucas-hp



Step No.	Time	Activity/Remarks	TC/TLM	Display/ Branch
	ET=+ UT=+00.00.00	SEND_DRCU_COMMAND  SEND_DRCU_COMMAND  Command Parameter(s) : DRCUCOMMAND                   SPD4N505 OVERRIDE                   SPD9N505  TC Control Flags :  GBM IL DSE --- -- ---  Subsch. ID : 370 Det. descr. : SEND A SINGLE COMMAND TO THE DRCU	SCD06505  843c0004 <hex> 0 <hex> (Def)	
	ET=+ UT=+00.00.01	SEND_DRCU_COMMAND  SEND_DRCU_COMMAND  Command Parameter(s) : DRCUCOMMAND                   SPD4N505 OVERRIDE                   SPD9N505  TC Control Flags :  GBM IL DSE --- -- ---  Subsch. ID : 370 Det. descr. : SEND A SINGLE COMMAND TO THE DRCU	SCD06505  843e0001 <hex> 0 <hex> (Def)	
5		Set default end conditions		Next Step: END
		Note that a <b>TM(5,1)</b> packet [New_Step_Report] is generated after each of the following SET_OBS_STEP telecommands		
	ET=+ UT=+00.00.00	SET_OBS_STEP  SET_OBS_STEP  Command Parameter(s) : OBSERVATION_STEP           SP03N500  Subsch. ID : 370 Det. descr. : SET OBSERVATION STEP	SC003500  0 <hex>	
	ET=+ UT=+00.00.01	SET_BBID  SET_BBID  Command Parameter(s) : BUILDING_BLOCK_ID           SP01N500  Subsch. ID : 370 Det. descr. : SET BUILDING BLOCK IDENTIFIER	SC001500  80000000 <hex>	
		Verify Telemetry  BBFULLTYPE                   SM2LN500	= Null	AND=ZAZ90999

SPIRE-CP-START-SPEC-DATA  
 File: H\_COP\_SPI\_SPDG.xls  
 Author: L.Lucas-hp



Step No.	Time	Activity/Remarks	TC/TLM	Display/ Branch
	ET=+ UT=+00.00.00	SET_OBS_STEP  SET_OBS_STEP  Command Parameter(s) : OBSERVATION_STEP SP03N500  Subsch. ID : 370 Det. descr. : SET OBSERVATION STEP	SC003500  0 <hex>	
	ET=+ UT=+00.00.01	SET_BBID  SET_BBID  Command Parameter(s) : BUILDING_BLOCK_ID SP01N500  Subsch. ID : 370 Det. descr. : SET BUILDING BLOCK IDENTIFIER	SC001500  80030001 <hex>	
		Verify Telemetry  BBFULLTYPE SM2LN500	= EndObs	AND=ZAZ90999
	ET=+ UT=+00.00.00	SET_OBS_STEP  SET_OBS_STEP  Command Parameter(s) : OBSERVATION_STEP SP03N500  Subsch. ID : 370 Det. descr. : SET OBSERVATION STEP	SC003500  1 <hex>	
	ET=+ UT=+00.00.01	SET_OBSID  SET_OBSID  Command Parameter(s) : OBSERVATION_ID SP00N500  Subsch. ID : 370 Det. descr. : SET OBSERVATION IDENTIFIER	SC000500  00000000 <hex>	
		Verify Telemetry  OBSID SM10N500	= 00000000 <hex>	AND=ZAZ90999
	ET=+ UT=+00.00.00	SET_OBS_STEP  SET_OBS_STEP  Command Parameter(s) : OBSERVATION_STEP SP03N500  Subsch. ID : 370 Det. descr. : SET OBSERVATION STEP	SC003500  0 <hex>	
	ET=+ UT=+00.00.01	SET_BBID  SET_BBID  Command Parameter(s) : BUILDING_BLOCK_ID SP01N500  Subsch. ID : 370 Det. descr. : SET BUILDING BLOCK IDENTIFIER	SC001500  80000000 <hex>	



SPIRE-CP-START-SPEC-DATA  
 File: H\_COP\_SPI\_SPDG.xls  
 Author: L.Lucas-hp



Step No.	Time	Activity/Remarks	TC/TLM	Display/ Branch
		Verify Telemetry BBFULLTYPE SM2LN500	= Null	AND=ZAZ90999
<b>End of Procedure</b>				