

SpireEngSmecLedLvdt Switch on SMEC LED and LVDT
 File: H_COP_SPI_SMLN.xls
 Author: L.Lucas-hp



Procedure Summary

Objectives

This procedure SpireEngSmecLedLvdt; This observation just switches on the SMEC LED and LVDT sensor
 Generated especially for some SMEV swith on specific tests.

It is proposed to execute this procedure in DTCP 438.
 It will switch on the SMEC LED and the LVDT sensor power in advance of the planned MTL cooler recycle and spectrometer observations in OD 438.
 The aim is to try and achieve SMEC temperature stability before the start of spectrometer observations.
 No RT science will be generated.
 The OBSID will need to be set manually in the first TC. The OBSID to use is 0x2121.

Based on procedure:SpireEngSmecLedLvdt Version 2
 Generated:06/07/2010

Summary of Constraints

Spacecraft Configuration

Start of Procedure

SPIRE mode = REDY

End of Procedure

SPIRE mode = REDY

Reference File(s)

Input Command Sequences

Output Command Sequences

HCSSMLN

Referenced Displays

ANDs	GRDs	SLDs
SA_7_559		
ZAZ90999		
SA_1_559		

Configuration Control Information

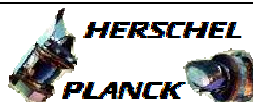
DATE	FOP ISSUE	VERSION	MODIFICATION DESCRIPTION	AUTHOR	SPR REF
16/07/2010		1	Created	L.Lucas-hp	

SpireEngSmecLedLvdt Switch on SMEC LED and LVDT
File: H_COP_SPI_SMLN.xls
Author: L.Lucas-hp

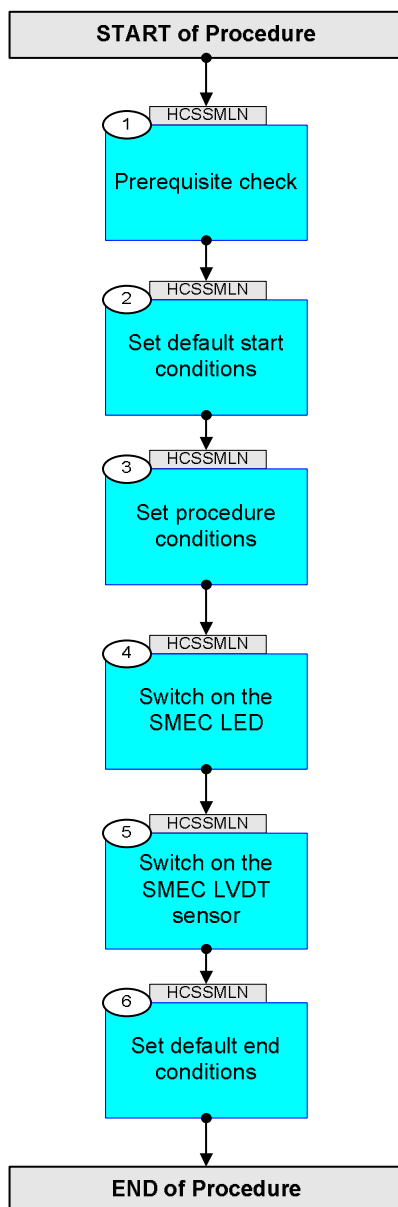


16/07/2010		1.01	Validation : Corrected TM check	L.Lucas-hp	
16/07/2010	3.1	2	Removing unnecessary ET and UT	L.Lucas-hp	

SpireEngSmecLedLvdt Switch on SMEC LED and LVDT
File: H_COP_SPI_SMLN.xls
Author: L.Lucas-hp



Procedure Flowchart Overview



SpireEngSmecLedLvdT Switch on SMEC LED and LVDT
 File: H_COP_SPI_SMLN.xls
 Author: L.Lucas-hp



Step No.	Time	Activity/Remarks	TC/TLM	Display/ Branch
Beginning of Procedure				
<p><i>TC Seq. Name : HCSSMLN (SMEC LVDT LED On)</i></p> <p><i>TimeTag Type: Y</i> <i>Sub Schedule ID:</i></p> <p style="text-align: center;">□</p>				
1		<i>Prerequisite check</i>		Next Step: 2
1.1		<i>HSC/ICC input</i>		□
		<p>Verify that the HSC has supplied a valid OBSID value:</p> <p>OBS_ID = 0xnnnn nnnn</p>		
1.2		<i>TM Checks</i>		□
		<p>Check Telemetry, for comparison later</p> <p style="text-align: center;">TM2N SMT1N500</p>		AND=SA_7_559
		<p>Check Telemetry, for comparison later</p> <p style="text-align: center;">THSK SM00T500</p>		AND=SA_7_559
		<p>Check telemetry, for comparison later</p> <p style="text-align: center;">MODE SM00M500</p>		AND=SA_7_559
2		<i>Set default start conditions</i>		Next Step: 3
		Note that a TM(5,1) packet [New_Step_Report] is generated after each of the following SET_OBS_STEP telecommands		
	ET=+ UT=+00.00.00	<p>SET_OBS_STEP</p> <p style="text-align: center;">SET_OBS_STEP</p> <p><i>Command Parameter(s) :</i> OBSERVATION_STEP SP03N500</p> <p><i>Subsch. ID : 370</i> <i>Det. descr. : SET OBSERVATION STEP</i></p>	SC003500	
	ET=+ UT=+00.00.01	<p>SET_BBID</p> <p style="text-align: center;">SET_BBID</p> <p><i>Command Parameter(s) :</i> BUILDING_BLOCK_ID SP01N500</p> <p><i>Subsch. ID : 370</i> <i>Det. descr. : SET BUILDING BLOCK IDENTIFIER</i></p>	SC001500	

SpireEngSmecLedLvdT Switch on SMEC LED and LVDT
 File: H_COP_SPI_SMLN.xls
 Author: L.Lucas-hp



Step No.	Time	Activity/Remarks	TC/TLM	Display/ Branch
		Verify Telemetry BBFULLTYPE SM2LN500	= ClearObs	AND=ZAZ90999
	ET=+ UT=+00.00.00	SET_OBS_STEP SET_OBS_STEP Command Parameter(s) : OBSERVATION_STEP SP03N500 Subsch. ID : 370 Det. descr. : SET OBSERVATION STEP	SC003500 1 <hex>	
	ET=+ UT=+00.00.01	SET_OBSID SET_OBSID Command Parameter(s) : OBSERVATION_ID SP00N500 Subsch. ID : 370 Det. descr. : SET OBSERVATION IDENTIFIER	SC000500 00000000 <hex>	
		Verify Telemetry OBSID SM10N500	= 00000000 <hex>	AND=ZAZ90999
	ET=+ UT=+00.00.00	SET_OBS_STEP SET_OBS_STEP Command Parameter(s) : OBSERVATION_STEP SP03N500 Subsch. ID : 370 Det. descr. : SET OBSERVATION STEP	SC003500 0 <hex>	
	ET=+ UT=+00.00.01	SET_BBID SET_BBID Command Parameter(s) : BUILDING_BLOCK_ID SP01N500 Subsch. ID : 370 Det. descr. : SET BUILDING BLOCK IDENTIFIER	SC001500 80000000 <hex>	
		Verify Telemetry BBFULLTYPE SM2LN500	= Null	AND=ZAZ90999
	ET=+ UT=+00.00.00	SET_OBS_STEP SET_OBS_STEP Command Parameter(s) : OBSERVATION_STEP SP03N500 Subsch. ID : 370 Det. descr. : SET OBSERVATION STEP	SC003500 0 <hex>	

SpireEngSmecLedLvdt Switch on SMEC LED and LVDT
 File: H_COP_SPI_SMLN.xls
 Author: L.Lucas-hp



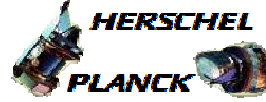
Step No.	Time	Activity/Remarks	TC/TLM	Display/ Branch
	ET=+ UT=+00.00.01	SET_BBID Command Parameter(s) : BUILDING_BLOCK_ID Subsch. ID : 370 Det. descr. : SET BUILDING BLOCK IDENTIFIER	SET_BBID SP01N500 80020001 <hex>	SC001500
		Verify Telemetry BBFULLTYPE SM2LN500	= SpireBbStartOb	AND=ZAZ90999
3		Set procedure conditions		Next Step: 4
	ET=+ UT=+00.00.00	RESET_DRCU_COUNTERS RESET_DRCU_COUNTERS Subsch. ID : 370 Det. descr. : RESET DRCU COUNTERS		SCD00505
		Verify that the TRESET parameter has the same value as the THSK parameter TRESET SM01T500	same as THSK	AND=SA_1_559
		THSK SM00T500	any	AND=SA_1_559
		Note that a TM(5,1) packet [New_Step_Report] is generated after each of the following SET_OBS_STEP telecommands		
	ET=+ UT=+00.00.00	SET_OBS_STEP SET_OBS_STEP Command Parameter(s) : OBSERVATION_STEP Subsch. ID : 370 Det. descr. : SET OBSERVATION STEP	SP03N500 1 <hex>	SC003500
	ET=+ UT=+00.00.01	SET_OBSID SET_OBSID Command Parameter(s) : OBSERVATION_ID Subsch. ID : 370 Det. descr. : SET OBSERVATION IDENTIFIER	SP00N500 OBS_ID	SC000500
		Verify Telemetry OBSID SM10N500	OBS_ID	AND=ZAZ90999
	ET=+ UT=+00.00.00	SET_OBS_STEP SET_OBS_STEP Command Parameter(s) : OBSERVATION_STEP Subsch. ID : 370 Det. descr. : SET OBSERVATION STEP	SP03N500 0 <hex>	SC003500

SpireEngSmecLedLvdT Switch on SMEC LED and LVDT
 File: H_COP_SPI_SMLN.xls
 Author: L.Lucas-hp



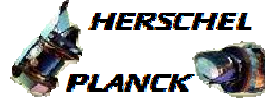
Step No.	Time	Activity/Remarks	TC/TLM	Display/ Branch
	ET=+ UT=+00.00.01	SET_BBID SET_BBID Command Parameter(s) : BUILDING_BLOCK_ID SP01N500 TC Control Flags : GBM IL DSE --- -- --- Subsch. ID : 370 Det. descr. : SET BUILDING BLOCK IDENTIFIER	SC001500 8d610001 <hex>	
		Verify Telemetry BBFULLTYPE SM2LN500	8D61 (h)	AND=ZAZ90999
4		Switch on the SMEC LED		Next Step: 5
	ET=+ UT=+00.00.00	SEND_DRCU_COMMAND_RAW SEND_DRCU_COMMAND Command Parameter(s) : DRCUCOMMAND SPD4N505 OVERRIDE SPD9N505 TC Control Flags : GBM IL DSE --Y -- --- Subsch. ID : 370 Det. descr. : SEND A SINGLE COMMAND TO THE DRCU	SCD06505 90400001 <hex> 0 <hex> (Def)	
5		Switch on the SMEC LVDT sensor		Next Step: 6
	ET=+ UT=+00.00.04	SEND_DRCU_COMMAND_RAW SEND_DRCU_COMMAND Command Parameter(s) : DRCUCOMMAND SPD4N505 OVERRIDE SPD9N505 TC Control Flags : GBM IL DSE --Y -- --- Subsch. ID : 370 Det. descr. : SEND A SINGLE COMMAND TO THE DRCU	SCD06505 90410001 <hex> 0 <hex> (Def)	
6		Set default end conditions		Next Step: END
		Note that a TM(5,1) packet [New_Step_Report] is generated after each of the following SET_OBS_STEP telecommands		

SpireEngSmecLedLvdT Switch on SMEC LED and LVDT
 File: H_COP_SPI_SMLN.xls
 Author: L.Lucas-hp



Step No.	Time	Activity/Remarks	TC/TLM	Display/ Branch
	ET=+ UT=+00.00.00	SET_OBS_STEP SET_OBS_STEP Command Parameter(s) : OBSERVATION_STEP SP03N500 Subsch. ID : 370 Det. descr. : SET OBSERVATION STEP	SC003500 0 <hex>	
	ET=+ UT=+00.00.01	SET_BBID SET_BBID Command Parameter(s) : BUILDING_BLOCK_ID SP01N500 Subsch. ID : 370 Det. descr. : SET BUILDING BLOCK IDENTIFIER	SC001500 80030001 <hex>	
		Verify Telemetry BBFULLTYPE SM2LN500	= EndObs	AND=ZAZ90999
	ET=+ UT=+00.00.00	SET_OBS_STEP SET_OBS_STEP Command Parameter(s) : OBSERVATION_STEP SP03N500 Subsch. ID : 370 Det. descr. : SET OBSERVATION STEP	SC003500 1 <hex>	
	ET=+ UT=+00.00.01	SET_OBSID SET_OBSID Command Parameter(s) : OBSERVATION_ID SP00N500 Subsch. ID : 370 Det. descr. : SET OBSERVATION IDENTIFIER	SC000500 00000000 <hex>	
		Verify Telemetry OBSID SM10N500	= 00000000 <hex>	AND=ZAZ90999
	ET=+ UT=+00.00.00	SET_OBS_STEP SET_OBS_STEP Command Parameter(s) : OBSERVATION_STEP SP03N500 Subsch. ID : 370 Det. descr. : SET OBSERVATION STEP	SC003500 0 <hex>	

SpireEngSmecLedLvdt Switch on SMEC LED and LVDT
 File: H_COP_SPI_SMLN.xls
 Author: L.Lucas-hp



Step No.	Time	Activity/Remarks	TC/TLM	Display/ Branch
	ET=+ UT=+00.00.00	SET_BBID_RAW Command Parameter(s) : BUILDING_BLOCK_ID TC Control Flags : Subsch. ID : 370 Det. descr. : SET BUILDING BLOCK IDENTIFIER	SET_BBID SP01N500 GBM IL DSE --- -- ---	SC001500 80000000 <hex>
		Verify Telemetry BBFULLTYPE	SM2LN500 = Null	AND=ZAZ90999
	ET=+ UT=+00.00.01	SET_OBSID_RAW Command Parameter(s) : OBSERVATION_ID TC Control Flags : Subsch. ID : 370 Det. descr. : SET OBSERVATION IDENTIFIER	SET_OBSID SP00N500 GBM IL DSE --Y -- ---	SC000500 50000000 <hex>
End of Procedure				