

Mode\_SMECFunc03 SMEC Encoder Levels Check  
 File: H\_COP\_SPI\_SMEP.xls  
 Author: L.Lucas-hp



## Procedure Summary

### Objectives

The purpose of this procedure SMEC Encoder Levels Check PRIME  
 Based on Procedure:  
 Mode\_SMECFunc03 (v7)

### Summary of Constraints

Ensure MCU-01 has been successfully executed.

### Spacecraft Configuration

#### Start of Procedure

Mode: REDY

#### End of Procedure

Mode: REDY

### Reference File(s)

#### Input Command Sequences

#### Output Command Sequences

HCSSMEP

### Referenced Displays

ANDs	GRDs	SLDs
SA_6_559		
ZAZ90999		
SA_1_559		

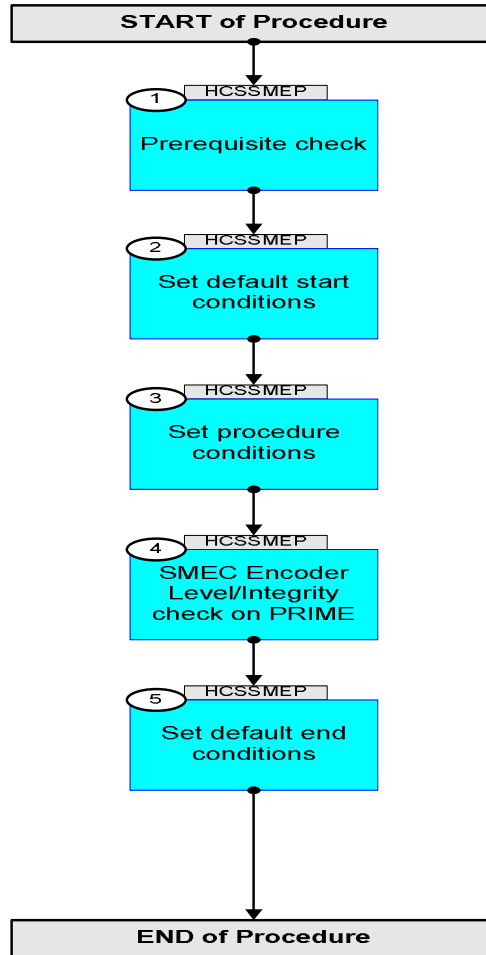
### Configuration Control Information

DATE	FOP ISSUE	VERSION	MODIFICATION DESCRIPTION	AUTHOR	SPR REF
08/12/08		1	Created	L.Lucas-hp	
28/01/09	2	2	Removed ETs for ease of loading onto Manual Stack	L.Lucas-hp	
24/03/09	2.2	2.01	Validation : Title Update	L.Lucas-hp	

Mode\_SMECFunc03 SMEC Encoder Levels Check  
File: H\_COP\_SPI\_SMEP.xls  
Author: L.Lucas-hp

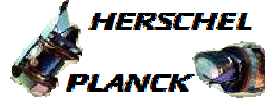


## Procedure Flowchart Overview



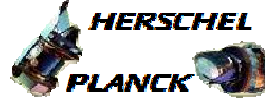


Mode\_SMECFunc03 SMEC Encoder Levels Check  
 File: H\_COP\_SPI\_SMEP.xls  
 Author: L.Lucas-hp



Step No.	Time	Activity/Remarks	TC/TLM	Display/ Branch
	ET=+ UT=+00.00.00	SET_OBS_STEP  SET_OBS_STEP  Command Parameter(s) : OBSERVATION_STEP SP03N500  Subsch. ID : 370 Det. descr. : SET OBSERVATION STEP	SC003500  1 <hex>	
	ET=+ UT=+00.00.01	SET_OBSID  SET_OBSID  Command Parameter(s) : OBSERVATION_ID SP00N500  Subsch. ID : 370 Det. descr. : SET OBSERVATION IDENTIFIER	SC000500  00000000 <hex>	
		Verify Telemetry  OBSID SM10N500	= 00000000 <hex>	AND=ZAZ90999
	ET=+ UT=+00.00.00	SET_OBS_STEP  SET_OBS_STEP  Command Parameter(s) : OBSERVATION_STEP SP03N500  Subsch. ID : 370 Det. descr. : SET OBSERVATION STEP	SC003500  0 <hex>	
	ET=+ UT=+00.00.01	SET_BBID  SET_BBID  Command Parameter(s) : BUILDING_BLOCK_ID SP01N500  Subsch. ID : 370 Det. descr. : SET BUILDING BLOCK IDENTIFIER	SC001500  80000000 <hex>	
		Verify Telemetry  BBFULLTYPE SM2LN500	= Null	AND=ZAZ90999
	ET=+ UT=+00.00.00	SET_OBS_STEP  SET_OBS_STEP  Command Parameter(s) : OBSERVATION_STEP SP03N500  Subsch. ID : 370 Det. descr. : SET OBSERVATION STEP	SC003500  0 <hex>	
	ET=+ UT=+00.00.01	SET_BBID  SET_BBID  Command Parameter(s) : BUILDING_BLOCK_ID SP01N500  Subsch. ID : 370 Det. descr. : SET BUILDING BLOCK IDENTIFIER	SC001500  80020001 <hex>	

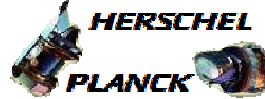
Mode\_SMECFunc03 SMEC Encoder Levels Check  
 File: H\_COP\_SPI\_SMEP.xls  
 Author: L.Lucas-hp



Step No.	Time	Activity/Remarks	TC/TLM	Display/ Branch
		Verify Telemetry <b>BBFULLTYPE</b> <b>SM2LN500</b>	= StartObs	AND=ZAZ90999
3		Set procedure conditions		Next Step: 4
	ET=+ UT=+00.00.00	RESET_DRCU_COUNTERS <b>RESET_DRCU_COUNTERS</b> Subsch. ID : 370 Det. descr. : RESET DRCU COUNTERS	SCD00505	
		Verify that the TRESET parameter has the same value as the THSK parameter <b>TRESET</b> <b>SM01T500</b>	same as THSK	AND=SA_1_559
		<b>THSK</b> <b>SM00T500</b>	any	AND=SA_1_559
		Note that a <b>TM(5,1)</b> packet [New_Step_Report] is generated after each of the following SET_OBS_STEP telecommands		
	ET=+ UT=+00.00.00	SET_OBS_STEP <b>SET_OBS_STEP</b> Command Parameter(s) : <b>OBSERVATION_STEP</b> <b>SP03N500</b> Subsch. ID : 370 Det. descr. : SET OBSERVATION STEP	SC003500  1 <hex>	
	ET=+ UT=+00.00.01	SET_OBSID <b>SET_OBSID</b> Command Parameter(s) : <b>OBSERVATION_ID</b> <b>SP00N500</b> Subsch. ID : 370 Det. descr. : SET OBSERVATION IDENTIFIER	SC000500  OBS_ID	
		Verify Telemetry <b>OBSID</b> <b>SM10N500</b>	OBS_ID	AND=ZAZ90999
	ET=+ UT=+00.00.00	SET_OBS_STEP <b>SET_OBS_STEP</b> Command Parameter(s) : <b>OBSERVATION_STEP</b> <b>SP03N500</b> Subsch. ID : 370 Det. descr. : SET OBSERVATION STEP	SC003500  0 <hex>	
	ET=+ UT=+00.00.01	SET_BBID <b>SET_BBID</b> Command Parameter(s) : <b>BUILDING_BLOCK_ID</b> <b>SP01N500</b> Subsch. ID : 370 Det. descr. : SET BUILDING BLOCK IDENTIFIER	SC001500  80000000 <hex>	



Mode\_SMECFunc03 SMEC Encoder Levels Check  
 File: H\_COP\_SPI\_SMEP.xls  
 Author: L.Lucas-hp



Step No.	Time	Activity/Remarks	TC/TLM	Display/ Branch
	ET=+ UT=+00.00.01	SEND_DRCU_COMMAND  SEND_DRCU_COMMAND  Command Parameter(s) : DRCUCOMMAND                   SPD4N505 OVERRIDE                   SPD9N505  TC Control Flags :  GBM IL DSE --- -- ---  Subsch. ID : 370 Det. descr. : SEND A SINGLE COMMAND TO THE DRCU	SCD06505  91c40000 <hex> 0 <hex> (Def)	
	ET=+ UT=+00.00.00	SEND_DRCU_COMMAND  SEND_DRCU_COMMAND  Command Parameter(s) : DRCUCOMMAND                   SPD4N505 OVERRIDE                   SPD9N505  TC Control Flags :  GBM IL DSE --- -- ---  Subsch. ID : 370 Det. descr. : SEND A SINGLE COMMAND TO THE DRCU	SCD06505  91c50000 <hex> 0 <hex> (Def)	
	ET=+ UT=+00.00.01	SEND_DRCU_COMMAND  SEND_DRCU_COMMAND  Command Parameter(s) : DRCUCOMMAND                   SPD4N505 OVERRIDE                   SPD9N505  TC Control Flags :  GBM IL DSE --- -- ---  Subsch. ID : 370 Det. descr. : SEND A SINGLE COMMAND TO THE DRCU	SCD06505  91c40025 <hex> 0 <hex> (Def)	
	ET=+ UT=+00.00.00	SEND_DRCU_COMMAND  SEND_DRCU_COMMAND  Command Parameter(s) : DRCUCOMMAND                   SPD4N505 OVERRIDE                   SPD9N505  TC Control Flags :  GBM IL DSE --- -- ---  Subsch. ID : 370 Det. descr. : SEND A SINGLE COMMAND TO THE DRCU	SCD06505  91c3ffff <hex> 0 <hex> (Def)	

Mode\_SMECFunc03 SMEC Encoder Levels Check  
 File: H\_COP\_SPI\_SMEP.xls  
 Author: L.Lucas-hp



Step No.	Time	Activity/Remarks	TC/TLM	Display/ Branch
	ET=+ UT=+00.00.01	SEND_DRCU_COMMAND  SEND_DRCU_COMMAND  Command Parameter(s) : DRCUCOMMAND                   SPD4N505 OVERRIDE                        SPD9N505  TC Control Flags :  GBM IL DSE --- -- ---  Subsch. ID : 370 Det. descr. : SEND A SINGLE COMMAND TO THE DRCU	SCD06505  91c10001 <hex> 0 <hex> (Def)	
	ET=+ UT=+00.00.01	SET_OBS_STEP  SET_OBS_STEP  Command Parameter(s) : OBSERVATION_STEP                SP03N500  TC Control Flags :  GBM IL DSE --- -- ---  Subsch. ID : 370 Det. descr. : SET OBSERVATION STEP	SC003500  0 <hex>	
	ET=+ UT=+00.00.00	SET_BBID  SET_BBID  Command Parameter(s) : BUILDING_BLOCK_ID                SP01N500  TC Control Flags :  GBM IL DSE --- -- ---  Subsch. ID : 370 Det. descr. : SET BUILDING BLOCK IDENTIFIER	SC001500  80000000 <hex>	
	ET=+ UT=+00.00.01	SET_OBS_STEP  SET_OBS_STEP  Command Parameter(s) : OBSERVATION_STEP                SP03N500  TC Control Flags :  GBM IL DSE --- -- ---  Subsch. ID : 370 Det. descr. : SET OBSERVATION STEP	SC003500  0 <hex>	
	ET=+ UT=+00.00.00	SET_BBID  SET_BBID  Command Parameter(s) : BUILDING_BLOCK_ID                SP01N500  TC Control Flags :  GBM IL DSE --- -- ---  Subsch. ID : 370 Det. descr. : SET BUILDING BLOCK IDENTIFIER	SC001500  82050001 <hex>	





Mode\_SMECFunc03 SMEC Encoder Levels Check  
 File: H\_COP\_SPI\_SMEP.xls  
 Author: L.Lucas-hp



Step No.	Time	Activity/Remarks	TC/TLM	Display/ Branch
	ET=+ UT=+00.00.05	SET_OBS_STEP  SET_OBS_STEP  Command Parameter(s) : OBSERVATION_STEP                   SP03N500  TC Control Flags :  GBM IL DSE --- -- ---  Subsch. ID : 370 Det. descr. : SET OBSERVATION STEP	SC003500  ffff <hex>	
	ET=+ UT=+00.00.01	SET_OBS_STEP  SET_OBS_STEP  Command Parameter(s) : OBSERVATION_STEP                   SP03N500  TC Control Flags :  GBM IL DSE --- -- ---  Subsch. ID : 370 Det. descr. : SET OBSERVATION STEP	SC003500  2 <hex>	
	ET=+ UT=+00.00.00	SEND_DRCU_COMMAND  SEND_DRCU_COMMAND  Command Parameter(s) : DRCUCOMMAND                   SPD4N505 OVERRIDE                        SPD9N505  TC Control Flags :  GBM IL DSE --- -- ---  Subsch. ID : 370 Det. descr. : SEND A SINGLE COMMAND TO THE DRCU	SCD06505  90400003 <hex> 0 <hex> (Def)	
	ET=+ UT=+00.00.05	SET_OBS_STEP  SET_OBS_STEP  Command Parameter(s) : OBSERVATION_STEP                   SP03N500  TC Control Flags :  GBM IL DSE --- -- ---  Subsch. ID : 370 Det. descr. : SET OBSERVATION STEP	SC003500  ffff <hex>	
	ET=+ UT=+00.00.02	SEND_DRCU_COMMAND  SEND_DRCU_COMMAND  Command Parameter(s) : DRCUCOMMAND                   SPD4N505 OVERRIDE                        SPD9N505  TC Control Flags :  GBM IL DSE --- -- ---  Subsch. ID : 370 Det. descr. : SEND A SINGLE COMMAND TO THE DRCU	SCD06505  90400001 <hex> 0 <hex> (Def)	





