

Mode\_SMECFunc07 Closed Loop Scan Check  
 File: H\_COP\_SPI\_SMCS.xls  
 Author: L.Lucas-hp



## Procedure Summary

### Objectives

The purpose of this procedure SMEC Close Loop Scan check

Name: SPIRE-CP-FUNC-SMEC-07  
 Name: Mode\_SMECFunc07  
 Version number:13  
 Generated:14/04/2009

### Summary of Constraints

Enusre that the SMEC has been initialised, that procedure H\_COP\_SPI\_MSIP/R (Prime or Red) has been executed.

### Spacecraft Configuration

**Start of Procedure**

Sub-Mode: SMEC\_INIT

**End of Procedure**

Sub-Mode: SMEC\_INIT

### Reference File(s)

**Input Command Sequences**

**Output Command Sequences**

HCSSMCS  
 HCSSMCSE  
 HCSSMCSC  
 HCSSMCSD  
 HCSSMCSQ  
 HCSSMCSB  
 HCSSMCSA

### Referenced Displays

ANDs	GRDs	SLDs
SA_6_559		(None)
ZAZ90999		
SA_1_559		
SAS0_559		

### Configuration Control Information

DATE	FOP ISSUE	VERSION	MODIFICATION DESCRIPTION	AUTHOR	SPR REF
22/12/08		1	Created	L.Lucas-hp	
28/01/09	2	2	Removed ETs for ease of loading onto Manual Stack	L.Lucas-hp	
24/03/09	2.2	2.01	Validation : Title Update	L.Lucas-hp	

Status : Version 4 - Unchanged  
 Last Checkin: 05/05/09

Mode\_SMECFunc07 Closed Loop Scan Check  
File: H\_COP\_SPI\_SMCS.xls  
Author: L.Lucas-hp

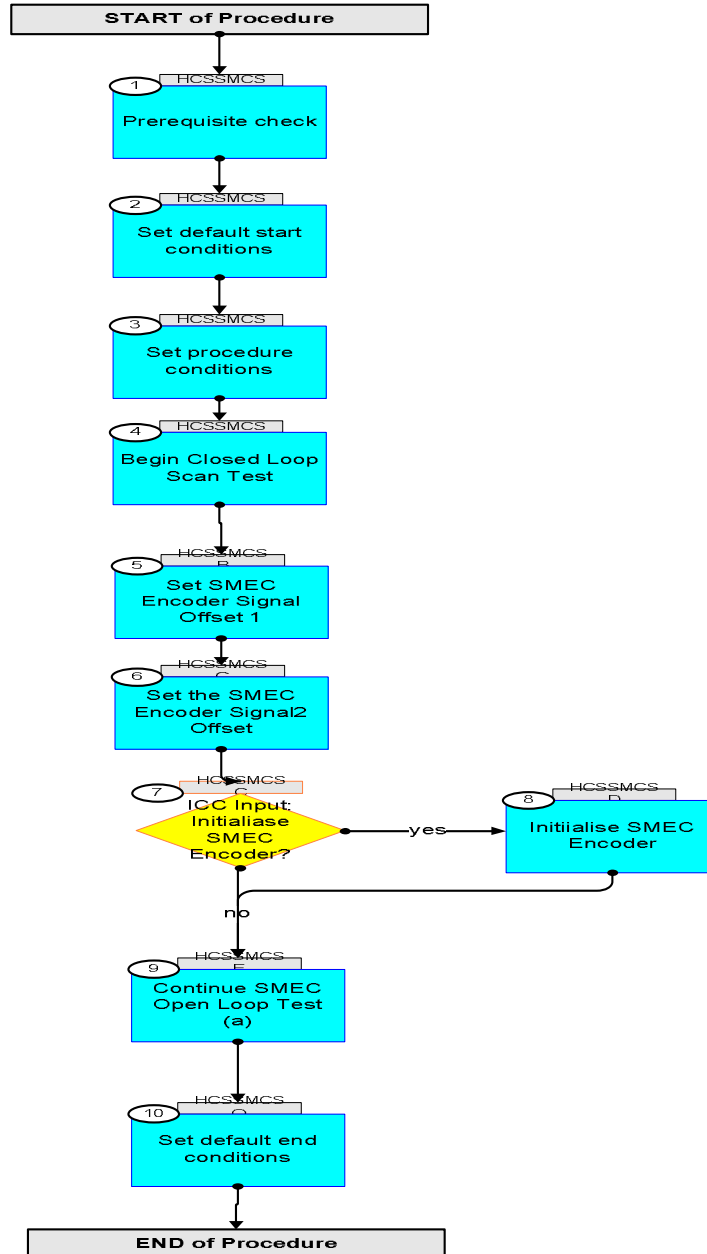


19/04/09	2.3	3	Updated in line with updates received from SPIRE (post SPIRE tests)	L.Lucas-hp	
05/05/09	2.4	4	Removed ET	L.Lucas-hp	

Mode\_SMECFunc07 Closed Loop Scan Check  
 File: H\_COP\_SPI\_SMCS.xls  
 Author: L.Lucas-hp



## Procedure Flowchart Overview



Mode\_SMECFunc07 Closed Loop Scan Check  
 File: H\_COP\_SPI\_SMCS.xls  
 Author: L.Lucas-hp



Step No.	Time	Activity/Remarks	TC/TLM	Display/ Branch
<b>Beginning of Procedure</b>				
<i>TC Seq. Name : HCSSMCS (SM CloseLoopScan)</i>  <i>TimeTag Type: Y</i> <i>Sub Schedule ID:</i>  <input type="checkbox"/>				
1		<i>Prerequisite check</i>		Next Step: 2
1.1		<i>HSC/ICC input</i>		<input type="checkbox"/>
		Verify that the HSC has supplied a valid OBSID value:  <b>OBS_ID = 0xnnnn nnnn</b>		
1.2		<i>TM CHECK</i>		<input type="checkbox"/>
		Verify Telemetry is set to 1, Closed Loop Mode <b>SMCLOOPMODE                    SMS1M515</b>	<b>= 1 &lt;hex&gt;</b>	AND=SA_6_559
2		<i>Set default start conditions</i>		Next Step: 3
		Note that a <b>TM(5,1)</b> packet [New_Step_Report] is generated after each of the following SET_OBS_STEP telecommands		
	ET=+ UT=+00.00.00	SET_OBS_STEP  <b>SET_OBS_STEP</b>  <i>Command Parameter(s) :</i> <b>OBSERVATION_STEP                    SP03N500</b>  <i>Subsch. ID : 370</i> <i>Det. descr. : SET OBSERVATION STEP</i>	<b>SC003500</b>    <b>0 &lt;hex&gt;</b>	
	ET=+ UT=+00.00.01	SET_BBID  <b>SET_BBID</b>  <i>Command Parameter(s) :</i> <b>BUILDING_BLOCK_ID                    SP01N500</b>  <i>Subsch. ID : 370</i> <i>Det. descr. : SET BUILDING BLOCK IDENTIFIER</i>	<b>SC001500</b>    <b>80010001 &lt;hex&gt;</b>	
		Verify Telemetry <b>BBFULLTYPE                    SM2LN500</b>	<b>= ClearObs</b>	AND=ZAZ90999

Mode\_SMECFunc07 Closed Loop Scan Check  
 File: H\_COP\_SPI\_SMCS.xls  
 Author: L.Lucas-hp



Step No.	Time	Activity/Remarks	TC/TLM	Display/ Branch
	ET=+ UT=+00.00.00	SET_OBS_STEP  SET_OBS_STEP  Command Parameter(s) : OBSERVATION_STEP SP03N500  Subsch. ID : 370 Det. descr. : SET OBSERVATION STEP	SC003500  1 <hex>	
	ET=+ UT=+00.00.01	SET_OBSID  SET_OBSID  Command Parameter(s) : OBSERVATION_ID SP00N500  Subsch. ID : 370 Det. descr. : SET OBSERVATION IDENTIFIER	SC000500  00000000 <hex>	
		Verify Telemetry  OBSID SM10N500	= 00000000 <hex>	AND=ZAZ90999
	ET=+ UT=+00.00.00	SET_OBS_STEP  SET_OBS_STEP  Command Parameter(s) : OBSERVATION_STEP SP03N500  Subsch. ID : 370 Det. descr. : SET OBSERVATION STEP	SC003500  0 <hex>	
	ET=+ UT=+00.00.01	SET_BBID  SET_BBID  Command Parameter(s) : BUILDING_BLOCK_ID SP01N500  Subsch. ID : 370 Det. descr. : SET BUILDING BLOCK IDENTIFIER	SC001500  80000000 <hex>	
		Verify Telemetry  BBFULLTYPE SM2LN500	= Null	AND=ZAZ90999
	ET=+ UT=+00.00.00	SET_OBS_STEP  SET_OBS_STEP  Command Parameter(s) : OBSERVATION_STEP SP03N500  Subsch. ID : 370 Det. descr. : SET OBSERVATION STEP	SC003500  0 <hex>	
	ET=+ UT=+00.00.01	SET_BBID  SET_BBID  Command Parameter(s) : BUILDING_BLOCK_ID SP01N500  Subsch. ID : 370 Det. descr. : SET BUILDING BLOCK IDENTIFIER	SC001500  80020001 <hex>	

Mode\_SMECFunc07 Closed Loop Scan Check  
 File: H\_COP\_SPI\_SMCS.xls  
 Author: L.Lucas-hp



Step No.	Time	Activity/Remarks	TC/TLM	Display/ Branch
		Verify Telemetry <b>BBFULLTYPE</b> <b>SM2LN500</b>	<b>= StartObs</b>	AND=ZAZ90999
3		<i>Set procedure conditions</i>		Next Step: 4
	ET=+ UT=+00.00.00	RESET_DRCU_COUNTERS  <b>RESET_DRCU_COUNTERS</b>  Subsch. ID : 370 Det. descr. : RESET DRCU COUNTERS	<b>SCD00505</b>	
		Verify that the TRESET parameter has the same value as the THSK parameter  <b>TRESET</b> <b>SM01T500</b>	<b>same as THSK</b>	AND=SA_1_559
		<b>THSK</b> <b>SM00T500</b>	<b>any</b>	(None)
		Note that a <b>TM(5,1)</b> packet [New_Step_Report] is generated after each of the following SET_OBS_STEP telecommands		
	ET=+ UT=+00.00.00	SET_OBS_STEP  <b>SET_OBS_STEP</b>  Command Parameter(s) : <b>OBSERVATION_STEP</b> <b>SP03N500</b>  Subsch. ID : 370 Det. descr. : SET OBSERVATION STEP	<b>SC003500</b>  <b>1 &lt;hex&gt;</b>	
	ET=+ UT=+00.00.01	SET_OBSID  <b>SET_OBSID</b>  Command Parameter(s) : <b>OBSERVATION_ID</b> <b>SP00N500</b>  Subsch. ID : 370 Det. descr. : SET OBSERVATION IDENTIFIER	<b>SC000500</b>  <b>OBS_ID</b>	
		Verify Telemetry  <b>OBSID</b> <b>SM10N500</b>	<b>OBS_ID</b>	AND=ZAZ90999
	ET=+ UT=+00.00.00	SET_OBS_STEP  <b>SET_OBS_STEP</b>  Command Parameter(s) : <b>OBSERVATION_STEP</b> <b>SP03N500</b>  Subsch. ID : 370 Det. descr. : SET OBSERVATION STEP	<b>SC003500</b>  <b>0 &lt;hex&gt;</b>	
	ET=+ UT=+00.00.01	SET_BBID  <b>SET_BBID</b>  Command Parameter(s) : <b>BUILDING_BLOCK_ID</b> <b>SP01N500</b>  Subsch. ID : 370 Det. descr. : SET BUILDING BLOCK IDENTIFIER	<b>SC001500</b>  <b>80000000 &lt;hex&gt;</b>	

Mode\_SMECFunc07 Closed Loop Scan Check  
 File: H\_COP\_SPI\_SMCS.xls  
 Author: L.Lucas-hp



Step No.	Time	Activity/Remarks	TC/TLM	Display/ Branch
		Verify Telemetry <b>BBFULLTYPE</b> <b>SM2LN500</b>	= Null	AND=ZAZ90999
	ET=+ UT=+00.00.00	SET_OBS_STEP <b>SET_OBS_STEP</b> Command Parameter(s) : <b>OBSERVATION_STEP</b> <b>SP03N500</b> Subsch. ID : 370 Det. descr. : SET OBSERVATION STEP	SC003500 0 <hex>	
	ET=+ UT=+00.00.01	SET_BBID <b>SET_BBID</b> Command Parameter(s) : <b>BUILDING_BLOCK_ID</b> <b>SP01N500</b> Subsch. ID : 370 Det. descr. : SET BUILDING BLOCK IDENTIFIER	SC001500 89060001 <hex>	
		Verify Telemetry <b>BBFULLTYPE</b> <b>SM2LN500</b>	= StartMCUdata	AND=SA_6_559
4		Begin Closed Loop Scan Test		Next Step: 5
	ET=+ UT=+00.00.01	SEND_DRCU_COMMAND <b>SEND_DRCU_COMMAND</b> Command Parameter(s) : <b>DRCUCOMMAND</b> <b>SPD4N505</b> <b>OVERRIDE</b> <b>SPD9N505</b> TC Control Flags : <b>GBM IL DSE</b> ---Y --- Subsch. ID : 370 Det. descr. : SEND A SINGLE COMMAND TO THE DRCU	SCD06505 91C20000 <hex> 0 <hex> (Def)	
	ET=+ UT=+00.00.00	SEND_DRCU_COMMAND <b>SEND_DRCU_COMMAND</b> Command Parameter(s) : <b>DRCUCOMMAND</b> <b>SPD4N505</b> <b>OVERRIDE</b> <b>SPD9N505</b> TC Control Flags : <b>GBM IL DSE</b> --- --- --- Subsch. ID : 370 Det. descr. : SEND A SINGLE COMMAND TO THE DRCU	SCD06505 91c00000 <hex> 0 <hex> (Def)	

Mode\_SMECFunc07 Closed Loop Scan Check  
 File: H\_COP\_SPI\_SMCS.xls  
 Author: L.Lucas-hp



Step No.	Time	Activity/Remarks	TC/TLM	Display/ Branch
	ET=+ UT=+00.00.01	SEND_DRCU_COMMAND  SEND_DRCU_COMMAND  Command Parameter(s) : DRCUCOMMAND                   SPD4N505 OVERRIDE                   SPD9N505  TC Control Flags :  GBM IL DSE --- -- ---  Subsch. ID : 370 Det. descr. : SEND A SINGLE COMMAND TO THE DRCU	SCD06505  91c40000 <hex> 0 <hex> (Def)	
	ET=+ UT=+00.00.00	SEND_DRCU_COMMAND  SEND_DRCU_COMMAND  Command Parameter(s) : DRCUCOMMAND                   SPD4N505 OVERRIDE                   SPD9N505  TC Control Flags :  GBM IL DSE --- -- ---  Subsch. ID : 370 Det. descr. : SEND A SINGLE COMMAND TO THE DRCU	SCD06505  91c50000 <hex> 0 <hex> (Def)	
	ET=+ UT=+00.00.01	SEND_DRCU_COMMAND  SEND_DRCU_COMMAND  Command Parameter(s) : DRCUCOMMAND                   SPD4N505 OVERRIDE                   SPD9N505  TC Control Flags :  GBM IL DSE --- -- ---  Subsch. ID : 370 Det. descr. : SEND A SINGLE COMMAND TO THE DRCU	SCD06505  91c4000a <hex> 0 <hex> (Def)	
	ET=+ UT=+00.00.00	SEND_DRCU_COMMAND  SEND_DRCU_COMMAND  Command Parameter(s) : DRCUCOMMAND                   SPD4N505 OVERRIDE                   SPD9N505  TC Control Flags :  GBM IL DSE --- -- ---  Subsch. ID : 370 Det. descr. : SEND A SINGLE COMMAND TO THE DRCU	SCD06505  91c3ffff <hex> 0 <hex> (Def)	



Mode\_SMECFunc07 Closed Loop Scan Check  
 File: H\_COP\_SPI\_SMCS.xls  
 Author: L.Lucas-hp



Step No.	Time	Activity/Remarks	TC/TLM	Display/ Branch
	ET=+ UT=+00.00.01	SEND_DRCU_COMMAND  SEND_DRCU_COMMAND  Command Parameter(s) : DRCUCOMMAND                   SPD4N505 OVERRIDE                   SPD9N505  TC Control Flags :  GBM IL DSE --- -- --  Subsch. ID : 370 Det. descr. : SEND A SINGLE COMMAND TO THE DRCU	SCD06505  91c10001 <hex> 0 <hex> (Def)	
	ET=+ UT=+00.00.01	SET_OBS_STEP  SET_OBS_STEP  Command Parameter(s) : OBSERVATION_STEP               SP03N500  TC Control Flags :  GBM IL DSE --- -- --  Subsch. ID : 370 Det. descr. : SET OBSERVATION STEP	SC003500  0 <hex>	
	ET=+ UT=+00.00.00	SET_BBID  SET_BBID  Command Parameter(s) : BUILDING_BLOCK_ID               SP01N500  TC Control Flags :  GBM IL DSE --- -- --  Subsch. ID : 370 Det. descr. : SET BUILDING BLOCK IDENTIFIER	SC001500  80000000 <hex>	
<p>TC Seq. Name : HCSSMCSB (SM CloseLoopScanB)</p> <p>TimeTag Type: B Sub Schedule ID:</p> <p style="text-align: center;">□</p>				
5		Set SMEC Encoder Signal Offset 1		Next Step: 6
		It may be necessary to change the offset value manually		

Mode\_SMECFunc07 Closed Loop Scan Check  
 File: H\_COP\_SPI\_SMCS.xls  
 Author: L.Lucas-hp



Step No.	Time	Activity/Remarks	TC/TLM	Display/ Branch
	ET=+ UT=+00.00.08	SEND_DRCU_COMMAND <p style="text-align: center;">SEND_DRCU_COMMAND</p> Command Parameter(s) : DRCUCOMMAND                   SPD4N505 OVERRIDE                        SPD9N505  TC Control Flags : <p style="text-align: center;">GBM IL DSE --Y -- ---</p> Subsch. ID : 370 Det. descr. : SEND A SINGLE COMMAND TO THE DRCU	SCD06505  9058A7F8 <hex> 0 <hex> (Def)	
		Note that it may be necessary to set the SMEC Encoder Signall offsets more than once during this test		
TC Seq. Name : HCSSMCSC (SM CloseLoopScanC)  TimeTag Type: B Sub Schedule ID:  <input type="checkbox"/>				
6		Set the SMEC Encoder Signal2 Offset		Next Step: 7
		It may be necessary to change the offset value manually		
	ET=+ UT=+00.00.02	SEND_DRCU_COMMAND <p style="text-align: center;">SEND_DRCU_COMMAND</p> Command Parameter(s) : DRCUCOMMAND                   SPD4N505 OVERRIDE                        SPD9N505  TC Control Flags : <p style="text-align: center;">GBM IL DSE --Y -- ---</p> Subsch. ID : 370 Det. descr. : SEND A SINGLE COMMAND TO THE DRCU	SCD06505  905A8EF8 <hex> 0 <hex> (Def)	
		Note that it may be necessary to set the SMEC Encoder Signal2 offsets more than once during this test		
7		ICC Input: Initialiase SMEC Encoder?		Next Step: yes 8 no 9
		Check with the Instrument Team if the SMEC Encoder is to be initialised		

Mode\_SMECFunc07 Closed Loop Scan Check  
 File: H\_COP\_SPI\_SMCS.xls  
 Author: L.Lucas-hp



Step No.	Time	Activity/Remarks	TC/TLM	Display/ Branch
<p><i>TC Seq. Name : HCSSMCSD (SM CloseLoopScanD)</i></p> <p><i>TimeTag Type: B</i>  <i>Sub Schedule ID:</i></p> <p>□</p>				
8		Initialise SMEC Encoder		Next Step: 9
		Confirm with the Instrument Team before sending the following commands.		
	ET=+ UT=+00.00.02	<p>SEND_DRCU_COMMAND</p> <p style="text-align: right;">SEND_DRCU_COMMAND</p> <p>Command Parameter(s) :</p> <p style="padding-left: 40px;">DRCUCOMMAND                   SPD4N505</p> <p style="padding-left: 40px;">OVERRIDE                        SPD9N505</p> <p>TC Control Flags :</p> <p style="padding-left: 40px;">GBM IL DSE</p> <p style="padding-left: 40px;">--Y -- ---</p> <p>Subsch. ID : 370</p> <p>Det. descr. : SEND A SINGLE COMMAND TO THE DRCU</p>	SCD06505	90490000 <hex> 0 <hex> (Def)
		Verify that the Trajectory Generation has been stopped.	= 0 <hex>	AND=SAS0_559
	ET=+ UT=+00.00.02	<p>SEND_DRCU_COMMAND</p> <p style="text-align: right;">SEND_DRCU_COMMAND</p> <p>Command Parameter(s) :</p> <p style="padding-left: 40px;">DRCUCOMMAND                   SPD4N505</p> <p style="padding-left: 40px;">OVERRIDE                        SPD9N505</p> <p>TC Control Flags :</p> <p style="padding-left: 40px;">GBM IL DSE</p> <p style="padding-left: 40px;">--Y -- ---</p> <p>Subsch. ID : 370</p> <p>Det. descr. : SEND A SINGLE COMMAND TO THE DRCU</p>	SCD06505	90490004 <hex> 0 <hex> (Def)
		Verify that the Trajectory has been initialised	= 4 <hex>	AND=SAS0_559
<p><i>TC Seq. Name : HCSSMCSE (SM CloseLoopScanE)</i></p> <p><i>TimeTag Type: B</i>  <i>Sub Schedule ID:</i></p> <p>□</p>				
9		Continue SMEC Open Loop Test (a)		Next Step: 10
9.1		TM Checks Before Continuing		□

Mode\_SMECFunc07 Closed Loop Scan Check  
 File: H\_COP\_SPI\_SMCS.xls  
 Author: L.Lucas-hp



Step No.	Time	Activity/Remarks	TC/TLM	Display/ Branch
		Verify SMEC remains in Closed Loop SMECLOOPMODE SMS1M515	= 1 <hex>	AND=SA_6_559
	ET=+ UT=+00.00.04	SET_OBS_STEP SET_OBS_STEP Command Parameter(s) : OBSERVATION_STEP SP03N500 TC Control Flags : GBM IL DSE --Y -- -- Subsch. ID : 370 Det. descr. : SET OBSERVATION STEP	SC003500 0 <hex>	
	ET=+ UT=+00.00.00	SET_BBID SET_BBID Command Parameter(s) : BUILDING_BLOCK_ID SP01N500 TC Control Flags : GBM IL DSE --- -- -- Subsch. ID : 370 Det. descr. : SET BUILDING BLOCK IDENTIFIER	SC001500 82030001 <hex>	
	ET=+ UT=+00.00.02	SEND_DRCU_COMMAND SEND_DRCU_COMMAND Command Parameter(s) : DRCUCOMMAND SPD4N505 OVERRIDE SPD9N505 TC Control Flags : GBM IL DSE --- -- -- Subsch. ID : 370 Det. descr. : SEND A SINGLE COMMAND TO THE DRCU	SCD06505 90490000 <hex> 0 <hex> (Def)	
	ET=+ UT=+00.00.01	SEND_DRCU_COMMAND SEND_DRCU_COMMAND Command Parameter(s) : DRCUCOMMAND SPD4N505 OVERRIDE SPD9N505 TC Control Flags : GBM IL DSE --- -- -- Subsch. ID : 370 Det. descr. : SEND A SINGLE COMMAND TO THE DRCU	SCD06505 904603e8 <hex> 0 <hex> (Def)	

Mode\_SMECFunc07 Closed Loop Scan Check  
 File: H\_COP\_SPI\_SMCS.xls  
 Author: L.Lucas-hp



Step No.	Time	Activity/Remarks	TC/TLM	Display/ Branch
	ET=+ UT=+00.00.00	SEND_DRCU_COMMAND  SEND_DRCU_COMMAND  Command Parameter(s) : DRCUCOMMAND                   SPD4N505 OVERRIDE                   SPD9N505  TC Control Flags :  GBM IL DSE --- -- ---  Subsch. ID : 370 Det. descr. : SEND A SINGLE COMMAND TO THE DRCU	SCD06505  90459a4c <hex> 0 <hex> (Def)	
	ET=+ UT=+00.00.01	SEND_DRCU_COMMAND  SEND_DRCU_COMMAND  Command Parameter(s) : DRCUCOMMAND                   SPD4N505 OVERRIDE                   SPD9N505  TC Control Flags :  GBM IL DSE --- -- ---  Subsch. ID : 370 Det. descr. : SEND A SINGLE COMMAND TO THE DRCU	SCD06505  90471482 <hex> 0 <hex> (Def)	
	ET=+ UT=+00.00.00	SEND_DRCU_COMMAND  SEND_DRCU_COMMAND  Command Parameter(s) : DRCUCOMMAND                   SPD4N505 OVERRIDE                   SPD9N505  TC Control Flags :  GBM IL DSE --- -- ---  Subsch. ID : 370 Det. descr. : SEND A SINGLE COMMAND TO THE DRCU	SCD06505  90561482 <hex> 0 <hex> (Def)	
	ET=+ UT=+00.00.01	SEND_DRCU_COMMAND  SEND_DRCU_COMMAND  Command Parameter(s) : DRCUCOMMAND                   SPD4N505 OVERRIDE                   SPD9N505  TC Control Flags :  GBM IL DSE --- -- ---  Subsch. ID : 370 Det. descr. : SEND A SINGLE COMMAND TO THE DRCU	SCD06505  90480004 <hex> 0 <hex> (Def)	

Mode\_SMECFunc07 Closed Loop Scan Check  
 File: H\_COP\_SPI\_SMCS.xls  
 Author: L.Lucas-hp



Step No.	Time	Activity/Remarks	TC/TLM	Display/ Branch
	ET=+ UT=+00.00.00	SEND_DRCU_COMMAND  SEND_DRCU_COMMAND  Command Parameter(s) : DRCUCOMMAND                   SPD4N505 OVERRIDE                   SPD9N505  TC Control Flags :  GBM IL DSE --- -- ---  Subsch. ID : 370 Det. descr. : SEND A SINGLE COMMAND TO THE DRCU	SCD06505  91c10001 <hex> 0 <hex> (Def)	
	ET=+ UT=+00.00.01	SEND_DRCU_COMMAND  SEND_DRCU_COMMAND  Command Parameter(s) : DRCUCOMMAND                   SPD4N505 OVERRIDE                   SPD9N505  TC Control Flags :  GBM IL DSE --- -- ---  Subsch. ID : 370 Det. descr. : SEND A SINGLE COMMAND TO THE DRCU	SCD06505  90490002 <hex> 0 <hex> (Def)	
	ET=+ UT=+00.05.20	SEND_DRCU_COMMAND  SEND_DRCU_COMMAND  Command Parameter(s) : DRCUCOMMAND                   SPD4N505 OVERRIDE                   SPD9N505  TC Control Flags :  GBM IL DSE --- -- ---  Subsch. ID : 370 Det. descr. : SEND A SINGLE COMMAND TO THE DRCU	SCD06505  91c10000 <hex> 0 <hex> (Def)	
	ET=+ UT=+00.00.01	FLUSH_FIFO  FLUSH_FIFO  Command Parameter(s) : FIFOFLAGS                   SPD0N505  TC Control Flags :  GBM IL DSE --- -- ---  Subsch. ID : 370 Det. descr. : FORCE DPU TO READ SCIENCE DATA FROM FIFOS AND FLUSH CONTENTS	SCD01505  7000 <hex>	

Mode\_SMECFunc07 Closed Loop Scan Check  
 File: H\_COP\_SPI\_SMCS.xls  
 Author: L.Lucas-hp



Step No.	Time	Activity/Remarks	TC/TLM	Display/ Branch
	ET=+ UT=+00.00.01	SEND_DRCU_COMMAND  SEND_DRCU_COMMAND  Command Parameter(s) : DRCUCOMMAND                   SPD4N505 OVERRIDE                   SPD9N505  TC Control Flags :  GBM IL DSE --- -- ---  Subsch. ID : 370 Det. descr. : SEND A SINGLE COMMAND TO THE DRCU	SCD06505  90490000 <hex> 0 <hex> (Def)	
	ET=+ UT=+00.00.00	SEND_DRCU_COMMAND  SEND_DRCU_COMMAND  Command Parameter(s) : DRCUCOMMAND                   SPD4N505 OVERRIDE                   SPD9N505  TC Control Flags :  GBM IL DSE --- -- ---  Subsch. ID : 370 Det. descr. : SEND A SINGLE COMMAND TO THE DRCU	SCD06505  904503e8 <hex> 0 <hex> (Def)	
	ET=+ UT=+00.00.01	SEND_DRCU_COMMAND  SEND_DRCU_COMMAND  Command Parameter(s) : DRCUCOMMAND                   SPD4N505 OVERRIDE                   SPD9N505  TC Control Flags :  GBM IL DSE --- -- ---  Subsch. ID : 370 Det. descr. : SEND A SINGLE COMMAND TO THE DRCU	SCD06505  90490001 <hex> 0 <hex> (Def)	
	ET=+ UT=+00.00.00	SET_OBS_STEP  SET_OBS_STEP  Command Parameter(s) : OBSERVATION_STEP               SP03N500  TC Control Flags :  GBM IL DSE --- -- ---  Subsch. ID : 370 Det. descr. : SET OBSERVATION STEP	SC003500  0 <hex>	

Mode\_SMECFunc07 Closed Loop Scan Check  
 File: H\_COP\_SPI\_SMCS.xls  
 Author: L.Lucas-hp



Step No.	Time	Activity/Remarks	TC/TLM	Display/ Branch
	ET=+ UT=+00.00.01	SET_BBID SET_BBID Command Parameter(s) : BUILDING_BLOCK_ID      SP01N500 TC Control Flags : GBM IL DSE --- -- -- Subsch. ID : 370 Det. descr. : SET BUILDING BLOCK IDENTIFIER	SC001500  80000000 <hex>	
9.2		ICC Checks		<input type="checkbox"/>
		Check with the Instrument Team before continuing with test		
	ET=+ UT=+00.00.01	SET_OBS_STEP SET_OBS_STEP Command Parameter(s) : OBSERVATION_STEP      SP03N500 TC Control Flags : GBM IL DSE --Y -- --	SC003500  0 <hex>	
	ET=+ UT=+00.00.00	SET_BBID SET_BBID Command Parameter(s) : BUILDING_BLOCK_ID      SP01N500 TC Control Flags : GBM IL DSE --- -- --	SC001500  80000000 <hex>	
	ET=+ UT=+00.00.02	SEND_DRCU_COMMAND SEND_DRCU_COMMAND Command Parameter(s) : DRCUCOMMAND            SPD4N505 OVERRIDE                SPD9N505 TC Control Flags : GBM IL DSE --- -- --	SCD06505  91c10000 <hex> 0 <hex> (Def)	
		Subsch. ID : 370 Det. descr. : SEND A SINGLE COMMAND TO THE DRCU		



Mode\_SMECFunc07 Closed Loop Scan Check  
 File: H\_COP\_SPI\_SMCS.xls  
 Author: L.Lucas-hp



Step No.	Time	Activity/Remarks	TC/TLM	Display/ Branch
	ET=+ UT=+00.00.01	FLUSH_FIFO  <b>FLUSH_FIFO</b>  <i>Command Parameter(s) :</i> <b>FIFOFLAGS</b> <b>SPD0N505</b>  <i>TC Control Flags :</i>  <b>GBM IL DSE</b> --- -- ---  <i>Subsch. ID : 370</i> <i>Det. descr. : FORCE DPU TO READ SCIENCE DATA FROM FIFOS AND FLUSH CONTENTS</i>	SCD01505  2000 <hex>	
TC Seq. Name : HCSSMCSQ (SM CloseLoopScanQ)  TimeTag Type: Sub Schedule ID:  <input type="checkbox"/>				
10		Set default end conditions		Next Step: END
		Note that a <b>TM(5,1)</b> packet [New_Step_Report] is generated after each of the following SET_OBS_STEP telecommands		
	ET=+ UT=+00.00.00	SET_OBS_STEP  <b>SET_OBS_STEP</b>  <i>Command Parameter(s) :</i> <b>OBSERVATION_STEP</b> <b>SP03N500</b>  <i>Subsch. ID : 370</i> <i>Det. descr. : SET OBSERVATION STEP</i>	SC003500  0 <hex>	
	ET=+ UT=+00.00.01	SET_BBID  <b>SET_BBID</b>  <i>Command Parameter(s) :</i> <b>BUILDING_BLOCK_ID</b> <b>SP01N500</b>  <i>Subsch. ID : 370</i> <i>Det. descr. : SET BUILDING BLOCK IDENTIFIER</i>	SC001500  80000000 <hex>	
		Verify Telemetry  <b>BBFULLTYPE</b> <b>SM2LN500</b>	= Null	AND=ZAZ90999
	ET=+ UT=+00.00.00	SET_OBS_STEP  <b>SET_OBS_STEP</b>  <i>Command Parameter(s) :</i> <b>OBSERVATION_STEP</b> <b>SP03N500</b>  <i>Subsch. ID : 370</i> <i>Det. descr. : SET OBSERVATION STEP</i>	SC003500  0 <hex>	

Mode\_SMECFunc07 Closed Loop Scan Check  
 File: H\_COP\_SPI\_SMCS.xls  
 Author: L.Lucas-hp



Step No.	Time	Activity/Remarks	TC/TLM	Display/ Branch	
	ET=+ UT=+00.00.01	SET_BBID  Command Parameter(s) : BUILDING_BLOCK_ID  Subsch. ID : 370 Det. descr. : SET BUILDING BLOCK IDENTIFIER	SET_BBID  SP01N500  80030001 <hex>	SC001500	
		Verify Telemetry  BBFULLTYPE	SM2LN500	= EndObs	AND=ZAZ90999
	ET=+ UT=+00.00.00	SET_OBS_STEP  Command Parameter(s) : OBSERVATION_STEP  Subsch. ID : 370 Det. descr. : SET OBSERVATION STEP	SET_OBS_STEP  SP03N500  1 <hex>	SC003500	
	ET=+ UT=+00.00.01	SET_OBSID  Command Parameter(s) : OBSERVATION_ID  Subsch. ID : 370 Det. descr. : SET OBSERVATION IDENTIFIER	SET_OBSID  SP00N500  00000000 <hex>	SC000500	
		Verify Telemetry  OBSID	SM10N500	= 00000000 <hex>	AND=ZAZ90999
	ET=+ UT=+00.00.00	SET_OBS_STEP  Command Parameter(s) : OBSERVATION_STEP  Subsch. ID : 370 Det. descr. : SET OBSERVATION STEP	SET_OBS_STEP  SP03N500  0 <hex>	SC003500	
	ET=+ UT=+00.00.01	SET_BBID  Command Parameter(s) : BUILDING_BLOCK_ID  Subsch. ID : 370 Det. descr. : SET BUILDING BLOCK IDENTIFIER	SET_BBID  SP01N500  80000000 <hex>	SC001500	
		Verify Telemetry  BBFULLTYPE	SM2LN500	= Null	AND=ZAZ90999
<b>End of Procedure</b>					