

Mode_SMECFunc04b Open Loop Position Check
 File: H_COP_SPI_SMCP.xls
 Author: L.Lucas-hp



Procedure Summary

Objectives

The objective of this procedure is a SMEC Open Loop Position check.
 Based on Procedure:
 Mode_SMECFunc04b (v11)

Test Description: Move to set positions and measure read back position, currents.

Summary of Constraints

****FOR GROUND TESTS, ONLY EXECUTE THIS TEST IF THE HERSCHEL CRYOSTAT IS HORIZONTAL****
 MCU-01,
 SMEC-01, SMEC-01, SMEC-023, SMEC-02A, SMEC-FFOFFSET, SMEC-09, and
 SMEC-INIT successfully passed.

Spacecraft Configuration

Start of Procedure

Mode: REDY
 Sub-Mode: SMEC_INIT SMEC on,
 initialised for close loop operation at home position.

End of Procedure

Mode: REDY
 Sub-Mode: SMEC_INIT SMEC on at
 home position.

Reference File(s)

Input Command Sequences

Output Command Sequences

HCSSMCP

Referenced Displays

| ANDs | GRDs | SLDs |
|----------|------|------|
| SA_6_559 | | |
| ZAZ90999 | | |
| SA_1_559 | | |
| ZAZ94999 | | |

Configuration Control Information

| DATE | FOP ISSUE | VERSION | MODIFICATION DESCRIPTION | AUTHOR | SPR REF |
|----------|-----------|---------|--------------------------|------------|---------|
| 22/12/08 | | 1 | Created | L.Lucas-hp | |

Mode_SMECFunc04b Open Loop Position Check
File: H_COP_SPI_SMCP.xls
Author: L.Lucas-hp

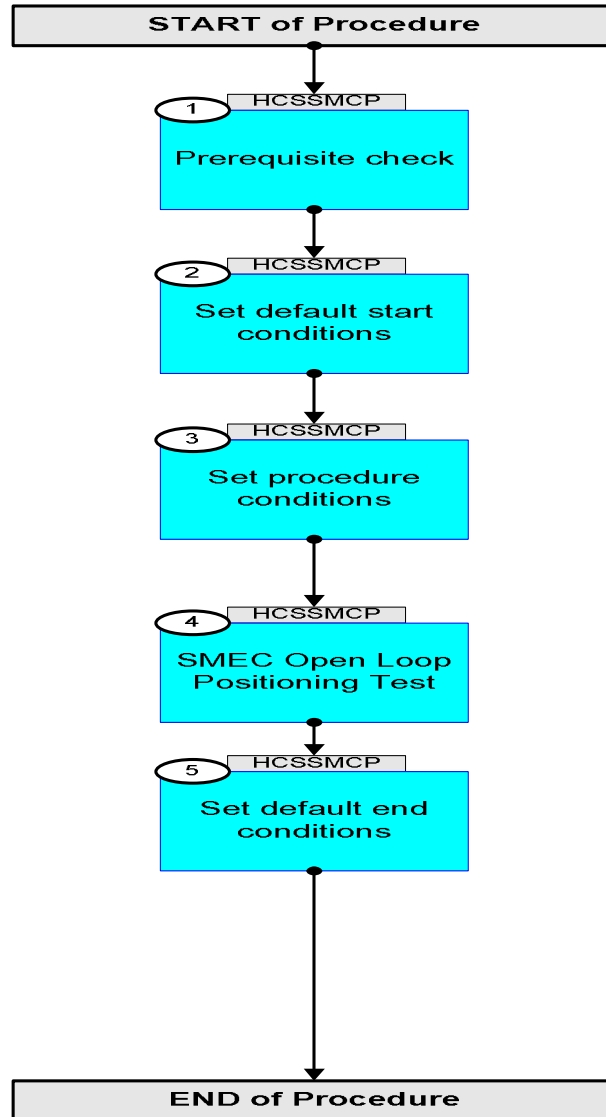


| | | | | | |
|----------|-----|------|--|------------|--|
| 27/01/09 | 2 | 2 | Remove ETs for ease of Loading to manual stack | L.Lucas-hp | |
| 24/03/09 | 2.2 | 2.01 | Validation : Title Update | L.Lucas-hp | |

Mode_SMECFunc04b Open Loop Position Check
File: H_COP_SPI_SMCP.xls
Author: L.Lucas-hp



Procedure Flowchart Overview



Mode_SMECFunc04b Open Loop Position Check
 File: H_COP_SPI_SMCP.xls
 Author: L.Lucas-hp



| Step No. | Time | Activity/Remarks | TC/TLM | Display/ Branch |
|----------|----------------------|---|--------------------------------|-----------------|
| | ET=+ UT=+00.00.00 | SET_OBS_STEP SET_OBS_STEP Command Parameter(s) : OBSERVATION_STEP SP03N500 Subsch. ID : 370 Det. descr. : SET OBSERVATION STEP | SC003500 1 <hex> | |
| | ET=+ UT=+00.00.01 | SET_OBSID SET_OBSID Command Parameter(s) : OBSERVATION_ID SP00N500 Subsch. ID : 370 Det. descr. : SET OBSERVATION IDENTIFIER | SC000500 00000000 <hex> | |
| | | Verify Telemetry OBSID SM10N500 | = 00000000 <hex> | AND=ZAZ90999 |
| | ET=+ UT=+00.00.00 | SET_OBS_STEP SET_OBS_STEP Command Parameter(s) : OBSERVATION_STEP SP03N500 Subsch. ID : 370 Det. descr. : SET OBSERVATION STEP | SC003500 0 <hex> | |
| | ET=+ UT=+00.00.01 | SET_BBID SET_BBID Command Parameter(s) : BUILDING_BLOCK_ID SP01N500 Subsch. ID : 370 Det. descr. : SET BUILDING BLOCK IDENTIFIER | SC001500 80000000 <hex> | |
| | | Verify Telemetry BBFULLTYPE SM2LN500 | = Null | AND=ZAZ90999 |
| | ET=+ UT=+00.00.00 | SET_OBS_STEP SET_OBS_STEP Command Parameter(s) : OBSERVATION_STEP SP03N500 Subsch. ID : 370 Det. descr. : SET OBSERVATION STEP | SC003500 0 <hex> | |
| | ET=+ UT=+00.00.01 | SET_BBID SET_BBID Command Parameter(s) : BUILDING_BLOCK_ID SP01N500 Subsch. ID : 370 Det. descr. : SET BUILDING BLOCK IDENTIFIER | SC001500 80020001 <hex> | |

Mode_SMECFunc04b Open Loop Position Check
 File: H_COP_SPI_SMCP.xls
 Author: L.Lucas-hp



| Step No. | Time | Activity/Remarks | TC/TLM | Display/ Branch |
|----------|----------------------|--|--|-----------------|
| | | Verify Telemetry BBFULLTYPE SM2LN500 | = StartObs | AND=ZAZ90999 |
| 3 | | <i>Set procedure conditions</i> | | Next Step: 4 |
| | ET=+ UT=+00.00.00 | RESET_DRCU_COUNTERS RESET_DRCU_COUNTERS Subsch. ID : 370 Det. descr. : RESET DRCU COUNTERS | SCD00505 | |
| | | Verify that the TRESET parameter has the same value as the THSK parameter TRESET SM01T500 | same as THSK | AND=SA_1_559 |
| | | THSK SM00T500 | any | AND=SA_1_559 |
| | | Note that a TM(5,1) packet [New_Step_Report] is generated after each of the following SET_OBS_STEP telecommands | | |
| | ET=+ UT=+00.00.00 | SET_OBS_STEP SET_OBS_STEP Command Parameter(s) : OBSERVATION_STEP SP03N500 Subsch. ID : 370 Det. descr. : SET OBSERVATION STEP | SC003500 1 <hex> | |
| | ET=+ UT=+00.00.01 | SET_OBSID SET_OBSID Command Parameter(s) : OBSERVATION_ID SP00N500 Subsch. ID : 370 Det. descr. : SET OBSERVATION IDENTIFIER | SC000500 OBS_ID | |
| | | Verify Telemetry OBSID SM10N500 | OBS_ID | AND=ZAZ90999 |
| | ET=+ UT=+00.00.00 | SET_OBS_STEP SET_OBS_STEP Command Parameter(s) : OBSERVATION_STEP SP03N500 Subsch. ID : 370 Det. descr. : SET OBSERVATION STEP | SC003500 0 <hex> | |
| | ET=+ UT=+00.00.01 | SET_BBID SET_BBID Command Parameter(s) : BUILDING_BLOCK_ID SP01N500 Subsch. ID : 370 Det. descr. : SET BUILDING BLOCK IDENTIFIER | SC001500 80000000 <hex> | |

Mode_SMECFunc04b Open Loop Position Check
 File: H_COP_SPI_SMCP.xls
 Author: L.Lucas-hp



| Step No. | Time | Activity/Remarks | TC/TLM | Display/ Branch |
|----------|----------------------|---|---|-----------------|
| | | Verify Telemetry BBFULLTYPE SM2LN500 | = Null | AND=ZAZ90999 |
| | ET=+ UT=+00.00.00 | SET_OBS_STEP SET_OBS_STEP Command Parameter(s) : OBSERVATION_STEP SP03N500 Subsch. ID : 370 Det. descr. : SET OBSERVATION STEP | SC003500 0 <hex> | |
| | ET=+ UT=+00.00.01 | SET_BBID SET_BBID Command Parameter(s) : BUILDING_BLOCK_ID SP01N500 Subsch. ID : 370 Det. descr. : SET BUILDING BLOCK IDENTIFIER | SC001500 89060001 <hex> | |
| | | Verify Telemetry BBFULLTYPE SM2LN500 | = StartMCUdata | AND=ZAZ94999 |
| 4 | | SMEC Open Loop Positioning Test | | Next Step: 5 |
| | ET=+ UT=+00.00.01 | SEND_DRCU_COMMAND SEND_DRCU_COMMAND Command Parameter(s) : DRCUCOMMAND SPD4N505 OVERRIDE SPD9N505 Subsch. ID : 370 Det. descr. : SEND A SINGLE COMMAND TO THE DRCU | SCD06505 91C20000 <hex> 0 <hex> (Def) | |
| | ET=+ UT=+00.00.00 | SEND_DRCU_COMMAND SEND_DRCU_COMMAND Command Parameter(s) : DRCUCOMMAND SPD4N505 OVERRIDE SPD9N505 Subsch. ID : 370 Det. descr. : SEND A SINGLE COMMAND TO THE DRCU | SCD06505 91c00000 <hex> 0 <hex> (Def) | |
| | ET=+ UT=+00.00.01 | SEND_DRCU_COMMAND SEND_DRCU_COMMAND Command Parameter(s) : DRCUCOMMAND SPD4N505 OVERRIDE SPD9N505 Subsch. ID : 370 Det. descr. : SEND A SINGLE COMMAND TO THE DRCU | SCD06505 91c40000 <hex> 0 <hex> (Def) | |

Mode_SMECFunc04b Open Loop Position Check
 File: H_COP_SPI_SMCP.xls
 Author: L.Lucas-hp



| Step No. | Time | Activity/Remarks | TC/TLM | Display/ Branch |
|----------|----------------------|--|---|-----------------|
| | ET=+ UT=+00.00.00 | SEND_DRCU_COMMAND SEND_DRCU_COMMAND Command Parameter(s) : DRCUCOMMAND SPD4N505 OVERRIDE SPD9N505 Subsch. ID : 370 Det. descr. : SEND A SINGLE COMMAND TO THE DRCU | SCD06505 91c50000 <hex> 0 <hex> (Def) | |
| | ET=+ UT=+00.00.01 | SEND_DRCU_COMMAND SEND_DRCU_COMMAND Command Parameter(s) : DRCUCOMMAND SPD4N505 OVERRIDE SPD9N505 Subsch. ID : 370 Det. descr. : SEND A SINGLE COMMAND TO THE DRCU | SCD06505 91c4000a <hex> 0 <hex> (Def) | |
| | ET=+ UT=+00.00.00 | SEND_DRCU_COMMAND SEND_DRCU_COMMAND Command Parameter(s) : DRCUCOMMAND SPD4N505 OVERRIDE SPD9N505 Subsch. ID : 370 Det. descr. : SEND A SINGLE COMMAND TO THE DRCU | SCD06505 91c3ffff <hex> 0 <hex> (Def) | |
| | ET=+ UT=+00.00.01 | SEND_DRCU_COMMAND SEND_DRCU_COMMAND Command Parameter(s) : DRCUCOMMAND SPD4N505 OVERRIDE SPD9N505 Subsch. ID : 370 Det. descr. : SEND A SINGLE COMMAND TO THE DRCU | SCD06505 91c10001 <hex> 0 <hex> (Def) | |
| | ET=+ UT=+00.00.01 | SET_OBS_STEP SET_OBS_STEP Command Parameter(s) : OBSERVATION_STEP SP03N500 Subsch. ID : 370 Det. descr. : SET OBSERVATION STEP | SC003500 0 <hex> | |
| | ET=+ UT=+00.00.00 | SET_BBID SET_BBID Command Parameter(s) : BUILDING_BLOCK_ID SP01N500 Subsch. ID : 370 Det. descr. : SET BUILDING BLOCK IDENTIFIER | SC001500 80000000 <hex> | |
| | | TMCHECK Check that the SMEC stays in closed loop while stepping through its travel range, i.e. SMECLOOPMODE=1 | | |

Mode_SMECFunc04b Open Loop Position Check
 File: H_COP_SPI_SMCP.xls
 Author: L.Lucas-hp



| Step No. | Time | Activity/Remarks | TC/TLM | Display/ Branch |
|----------|----------------------|--|---|-----------------|
| | | Verify Telemetry SMECLOOPMODE SMS1M515 | = 1 <hex> | AND=SA_6_559 |
| | ET=+ UT=+00.00.01 | SET_OBS_STEP SET_OBS_STEP Command Parameter(s) : OBSERVATION_STEP SP03N500 Subsch. ID : 370 Det. descr. : SET OBSERVATION STEP | SC003500 0 <hex> | |
| | ET=+ UT=+00.00.00 | SET_BBID SET_BBID Command Parameter(s) : BUILDING_BLOCK_ID SP01N500 Subsch. ID : 370 Det. descr. : SET BUILDING BLOCK IDENTIFIER | SC001500 820c0001 <hex> | |
| | ET=+ UT=+00.00.02 | SEND_DRCU_COMMAND SEND_DRCU_COMMAND Command Parameter(s) : DRCUCOMMAND SPD4N505 OVERRIDE SPD9N505 Subsch. ID : 370 Det. descr. : SEND A SINGLE COMMAND TO THE DRCU | SCD06505 90490000 <hex> 0 <hex> (Def) | |
| | ET=+ UT=+00.00.00 | SEND_DRCU_COMMAND SEND_DRCU_COMMAND Command Parameter(s) : DRCUCOMMAND SPD4N505 OVERRIDE SPD9N505 Subsch. ID : 370 Det. descr. : SEND A SINGLE COMMAND TO THE DRCU | SCD06505 90471388 <hex> 0 <hex> (Def) | |
| | ET=+ UT=+00.00.01 | SEND_DRCU_COMMAND SEND_DRCU_COMMAND Command Parameter(s) : DRCUCOMMAND SPD4N505 OVERRIDE SPD9N505 Subsch. ID : 370 Det. descr. : SEND A SINGLE COMMAND TO THE DRCU | SCD06505 90561388 <hex> 0 <hex> (Def) | |
| | ET=+ UT=+00.00.00 | SEND_DRCU_COMMAND SEND_DRCU_COMMAND Command Parameter(s) : DRCUCOMMAND SPD4N505 OVERRIDE SPD9N505 Subsch. ID : 370 Det. descr. : SEND A SINGLE COMMAND TO THE DRCU | SCD06505 91c10001 <hex> 0 <hex> (Def) | |

Mode_SMECFunc04b Open Loop Position Check
 File: H_COP_SPI_SMCP.xls
 Author: L.Lucas-hp



| Step No. | Time | Activity/Remarks | TC/TLM | Display/ Branch |
|----------|----------------------|--|---|-----------------|
| | ET=+ UT=+00.00.01 | SEND_DRCU_COMMAND SEND_DRCU_COMMAND Command Parameter(s) : DRCUCOMMAND SPD4N505 OVERRIDE SPD9N505 Subsch. ID : 370 Det. descr. : SEND A SINGLE COMMAND TO THE DRCU | SCD06505 904503e8 <hex> 0 <hex> (Def) | |
| | ET=+ UT=+00.00.00 | SEND_DRCU_COMMAND SEND_DRCU_COMMAND Command Parameter(s) : DRCUCOMMAND SPD4N505 OVERRIDE SPD9N505 Subsch. ID : 370 Det. descr. : SEND A SINGLE COMMAND TO THE DRCU | SCD06505 90490001 <hex> 0 <hex> (Def) | |
| | ET=+ UT=+00.00.02 | SET_OBS_STEP SET_OBS_STEP Command Parameter(s) : OBSERVATION_STEP SP03N500 Subsch. ID : 370 Det. descr. : SET OBSERVATION STEP | SC003500 1 <hex> | |
| | ET=+ UT=+00.00.05 | SET_OBS_STEP SET_OBS_STEP Command Parameter(s) : OBSERVATION_STEP SP03N500 Subsch. ID : 370 Det. descr. : SET OBSERVATION STEP | SC003500 ffff <hex> | |
| | ET=+ UT=+00.00.01 | SEND_DRCU_COMMAND SEND_DRCU_COMMAND Command Parameter(s) : DRCUCOMMAND SPD4N505 OVERRIDE SPD9N505 Subsch. ID : 370 Det. descr. : SEND A SINGLE COMMAND TO THE DRCU | SCD06505 904507d0 <hex> 0 <hex> (Def) | |
| | ET=+ UT=+00.00.02 | SET_OBS_STEP SET_OBS_STEP Command Parameter(s) : OBSERVATION_STEP SP03N500 Subsch. ID : 370 Det. descr. : SET OBSERVATION STEP | SC003500 2 <hex> | |

Mode_SMECFunc04b Open Loop Position Check
 File: H_COP_SPI_SMCP.xls
 Author: L.Lucas-hp



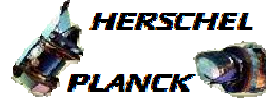
| Step No. | Time | Activity/Remarks | TC/TLM | Display/ Branch |
|----------|----------------------|---|---|-----------------|
| | ET=+ UT=+00.00.05 | SET_OBS_STEP SET_OBS_STEP Command Parameter(s) : OBSERVATION_STEP SP03N500 Subsch. ID : 370 Det. descr. : SET OBSERVATION STEP | SC003500 ffff <hex> | |
| | ET=+ UT=+00.00.01 | SEND_DRCU_COMMAND SEND_DRCU_COMMAND Command Parameter(s) : DRCUCOMMAND SPD4N505 OVERRIDE SPD9N505 Subsch. ID : 370 Det. descr. : SEND A SINGLE COMMAND TO THE DRCU | SCD06505 90450bb8 <hex> 0 <hex> (Def) | |
| | ET=+ UT=+00.00.02 | SET_OBS_STEP SET_OBS_STEP Command Parameter(s) : OBSERVATION_STEP SP03N500 Subsch. ID : 370 Det. descr. : SET OBSERVATION STEP | SC003500 3 <hex> | |
| | ET=+ UT=+00.00.05 | SET_OBS_STEP SET_OBS_STEP Command Parameter(s) : OBSERVATION_STEP SP03N500 Subsch. ID : 370 Det. descr. : SET OBSERVATION STEP | SC003500 ffff <hex> | |
| | ET=+ UT=+00.00.01 | SEND_DRCU_COMMAND SEND_DRCU_COMMAND Command Parameter(s) : DRCUCOMMAND SPD4N505 OVERRIDE SPD9N505 Subsch. ID : 370 Det. descr. : SEND A SINGLE COMMAND TO THE DRCU | SCD06505 90450fa0 <hex> 0 <hex> (Def) | |
| | ET=+ UT=+00.00.02 | SET_OBS_STEP SET_OBS_STEP Command Parameter(s) : OBSERVATION_STEP SP03N500 Subsch. ID : 370 Det. descr. : SET OBSERVATION STEP | SC003500 4 <hex> | |

Mode_SMECFunc04b Open Loop Position Check
 File: H_COP_SPI_SMCP.xls
 Author: L.Lucas-hp



| Step No. | Time | Activity/Remarks | TC/TLM | Display/ Branch |
|----------|----------------------|--|---|-----------------|
| | ET=+ UT=+00.00.05 | SET_OBS_STEP SET_OBS_STEP Command Parameter(s) : OBSERVATION_STEP SP03N500 Subsch. ID : 370 Det. descr. : SET OBSERVATION STEP | SC003500 ffff <hex> | |
| | ET=+ UT=+00.00.01 | SEND_DRCU_COMMAND SEND_DRCU_COMMAND Command Parameter(s) : DRCUCOMMAND SPD4N505 OVERRIDE SPD9N505 Subsch. ID : 370 Det. descr. : SEND A SINGLE COMMAND TO THE DRCU | SCD06505 90451388 <hex> 0 <hex> (Def) | |
| | ET=+ UT=+00.00.02 | SET_OBS_STEP SET_OBS_STEP Command Parameter(s) : OBSERVATION_STEP SP03N500 Subsch. ID : 370 Det. descr. : SET OBSERVATION STEP | SC003500 5 <hex> | |
| | ET=+ UT=+00.00.05 | SET_OBS_STEP SET_OBS_STEP Command Parameter(s) : OBSERVATION_STEP SP03N500 Subsch. ID : 370 Det. descr. : SET OBSERVATION STEP | SC003500 ffff <hex> | |
| | ET=+ UT=+00.00.01 | SEND_DRCU_COMMAND SEND_DRCU_COMMAND Command Parameter(s) : DRCUCOMMAND SPD4N505 OVERRIDE SPD9N505 Subsch. ID : 370 Det. descr. : SEND A SINGLE COMMAND TO THE DRCU | SCD06505 90451770 <hex> 0 <hex> (Def) | |
| | ET=+ UT=+00.00.02 | SET_OBS_STEP SET_OBS_STEP Command Parameter(s) : OBSERVATION_STEP SP03N500 Subsch. ID : 370 Det. descr. : SET OBSERVATION STEP | SC003500 6 <hex> | |

Mode_SMECFunc04b Open Loop Position Check
 File: H_COP_SPI_SMCP.xls
 Author: L.Lucas-hp



| Step No. | Time | Activity/Remarks | TC/TLM | Display/ Branch |
|----------|----------------------|---|---|-----------------|
| | ET=+ UT=+00.00.05 | SET_OBS_STEP SET_OBS_STEP Command Parameter(s) : OBSERVATION_STEP SP03N500 Subsch. ID : 370 Det. descr. : SET OBSERVATION STEP | SC003500 ffff <hex> | |
| | ET=+ UT=+00.00.01 | SEND_DRCU_COMMAND SEND_DRCU_COMMAND Command Parameter(s) : DRCUCOMMAND SPD4N505 OVERRIDE SPD9N505 Subsch. ID : 370 Det. descr. : SEND A SINGLE COMMAND TO THE DRCU | SCD06505 90451b58 <hex> 0 <hex> (Def) | |
| | ET=+ UT=+00.00.02 | SET_OBS_STEP SET_OBS_STEP Command Parameter(s) : OBSERVATION_STEP SP03N500 Subsch. ID : 370 Det. descr. : SET OBSERVATION STEP | SC003500 7 <hex> | |
| | ET=+ UT=+00.00.05 | SET_OBS_STEP SET_OBS_STEP Command Parameter(s) : OBSERVATION_STEP SP03N500 Subsch. ID : 370 Det. descr. : SET OBSERVATION STEP | SC003500 ffff <hex> | |
| | ET=+ UT=+00.00.01 | SEND_DRCU_COMMAND SEND_DRCU_COMMAND Command Parameter(s) : DRCUCOMMAND SPD4N505 OVERRIDE SPD9N505 Subsch. ID : 370 Det. descr. : SEND A SINGLE COMMAND TO THE DRCU | SCD06505 90451f40 <hex> 0 <hex> (Def) | |
| | ET=+ UT=+00.00.02 | SET_OBS_STEP SET_OBS_STEP Command Parameter(s) : OBSERVATION_STEP SP03N500 Subsch. ID : 370 Det. descr. : SET OBSERVATION STEP | SC003500 8 <hex> | |

Mode_SMECFunc04b Open Loop Position Check
 File: H_COP_SPI_SMCP.xls
 Author: L.Lucas-hp



| Step No. | Time | Activity/Remarks | TC/TLM | Display/ Branch |
|----------|----------------------|---|---|-----------------|
| | ET=+ UT=+00.00.05 | SET_OBS_STEP SET_OBS_STEP Command Parameter(s) : OBSERVATION_STEP SP03N500 Subsch. ID : 370 Det. descr. : SET OBSERVATION STEP | SC003500 ffff <hex> | |
| | ET=+ UT=+00.00.01 | SEND_DRCU_COMMAND SEND_DRCU_COMMAND Command Parameter(s) : DRCUCOMMAND SPD4N505 OVERRIDE SPD9N505 Subsch. ID : 370 Det. descr. : SEND A SINGLE COMMAND TO THE DRCU | SCD06505 90452328 <hex> 0 <hex> (Def) | |
| | ET=+ UT=+00.00.02 | SET_OBS_STEP SET_OBS_STEP Command Parameter(s) : OBSERVATION_STEP SP03N500 Subsch. ID : 370 Det. descr. : SET OBSERVATION STEP | SC003500 9 <hex> | |
| | ET=+ UT=+00.00.05 | SET_OBS_STEP SET_OBS_STEP Command Parameter(s) : OBSERVATION_STEP SP03N500 Subsch. ID : 370 Det. descr. : SET OBSERVATION STEP | SC003500 ffff <hex> | |
| | ET=+ UT=+00.00.01 | SEND_DRCU_COMMAND SEND_DRCU_COMMAND Command Parameter(s) : DRCUCOMMAND SPD4N505 OVERRIDE SPD9N505 Subsch. ID : 370 Det. descr. : SEND A SINGLE COMMAND TO THE DRCU | SCD06505 90452710 <hex> 0 <hex> (Def) | |
| | ET=+ UT=+00.00.02 | SET_OBS_STEP SET_OBS_STEP Command Parameter(s) : OBSERVATION_STEP SP03N500 Subsch. ID : 370 Det. descr. : SET OBSERVATION STEP | SC003500 a <hex> | |

Mode_SMECFunc04b Open Loop Position Check
 File: H_COP_SPI_SMCP.xls
 Author: L.Lucas-hp



| Step No. | Time | Activity/Remarks | TC/TLM | Display/ Branch |
|----------|----------------------|---|---|-----------------|
| | ET=+ UT=+00.00.05 | SET_OBS_STEP SET_OBS_STEP Command Parameter(s) : OBSERVATION_STEP SP03N500 Subsch. ID : 370 Det. descr. : SET OBSERVATION STEP | SC003500 ffff <hex> | |
| | ET=+ UT=+00.00.01 | SEND_DRCU_COMMAND SEND_DRCU_COMMAND Command Parameter(s) : DRCUCOMMAND SPD4N505 OVERRIDE SPD9N505 Subsch. ID : 370 Det. descr. : SEND A SINGLE COMMAND TO THE DRCU | SCD06505 90452af8 <hex> 0 <hex> (Def) | |
| | ET=+ UT=+00.00.02 | SET_OBS_STEP SET_OBS_STEP Command Parameter(s) : OBSERVATION_STEP SP03N500 Subsch. ID : 370 Det. descr. : SET OBSERVATION STEP | SC003500 b <hex> | |
| | ET=+ UT=+00.00.05 | SET_OBS_STEP SET_OBS_STEP Command Parameter(s) : OBSERVATION_STEP SP03N500 Subsch. ID : 370 Det. descr. : SET OBSERVATION STEP | SC003500 ffff <hex> | |
| | ET=+ UT=+00.00.01 | SEND_DRCU_COMMAND SEND_DRCU_COMMAND Command Parameter(s) : DRCUCOMMAND SPD4N505 OVERRIDE SPD9N505 Subsch. ID : 370 Det. descr. : SEND A SINGLE COMMAND TO THE DRCU | SCD06505 90452ee0 <hex> 0 <hex> (Def) | |
| | ET=+ UT=+00.00.02 | SET_OBS_STEP SET_OBS_STEP Command Parameter(s) : OBSERVATION_STEP SP03N500 Subsch. ID : 370 Det. descr. : SET OBSERVATION STEP | SC003500 c <hex> | |

Mode_SMECFunc04b Open Loop Position Check
 File: H_COP_SPI_SMCP.xls
 Author: L.Lucas-hp



| Step No. | Time | Activity/Remarks | TC/TLM | Display/ Branch |
|----------|----------------------|--|---|-----------------|
| | ET=+ UT=+00.00.05 | SET_OBS_STEP SET_OBS_STEP Command Parameter(s) : OBSERVATION_STEP SP03N500 Subsch. ID : 370 Det. descr. : SET OBSERVATION STEP | SC003500 ffff <hex> | |
| | ET=+ UT=+00.00.01 | SEND_DRCU_COMMAND SEND_DRCU_COMMAND Command Parameter(s) : DRCUCOMMAND SPD4N505 OVERRIDE SPD9N505 Subsch. ID : 370 Det. descr. : SEND A SINGLE COMMAND TO THE DRCU | SCD06505 904532c8 <hex> 0 <hex> (Def) | |
| | ET=+ UT=+00.00.02 | SET_OBS_STEP SET_OBS_STEP Command Parameter(s) : OBSERVATION_STEP SP03N500 Subsch. ID : 370 Det. descr. : SET OBSERVATION STEP | SC003500 d <hex> | |
| | ET=+ UT=+00.00.05 | SET_OBS_STEP SET_OBS_STEP Command Parameter(s) : OBSERVATION_STEP SP03N500 Subsch. ID : 370 Det. descr. : SET OBSERVATION STEP | SC003500 ffff <hex> | |
| | ET=+ UT=+00.00.01 | SEND_DRCU_COMMAND SEND_DRCU_COMMAND Command Parameter(s) : DRCUCOMMAND SPD4N505 OVERRIDE SPD9N505 Subsch. ID : 370 Det. descr. : SEND A SINGLE COMMAND TO THE DRCU | SCD06505 904536b0 <hex> 0 <hex> (Def) | |
| | ET=+ UT=+00.00.02 | SET_OBS_STEP SET_OBS_STEP Command Parameter(s) : OBSERVATION_STEP SP03N500 Subsch. ID : 370 Det. descr. : SET OBSERVATION STEP | SC003500 e <hex> | |

Mode_SMECFunc04b Open Loop Position Check
 File: H_COP_SPI_SMCP.xls
 Author: L.Lucas-hp



| Step No. | Time | Activity/Remarks | TC/TLM | Display/ Branch |
|----------|----------------------|--|---|-----------------|
| | ET=+ UT=+00.00.05 | SET_OBS_STEP SET_OBS_STEP Command Parameter(s) : OBSERVATION_STEP SP03N500 Subsch. ID : 370 Det. descr. : SET OBSERVATION STEP | SC003500 ffff <hex> | |
| | ET=+ UT=+00.00.01 | SEND_DRCU_COMMAND SEND_DRCU_COMMAND Command Parameter(s) : DRCUCOMMAND SPD4N505 OVERRIDE SPD9N505 Subsch. ID : 370 Det. descr. : SEND A SINGLE COMMAND TO THE DRCU | SCD06505 90453a98 <hex> 0 <hex> (Def) | |
| | ET=+ UT=+00.00.02 | SET_OBS_STEP SET_OBS_STEP Command Parameter(s) : OBSERVATION_STEP SP03N500 Subsch. ID : 370 Det. descr. : SET OBSERVATION STEP | SC003500 f <hex> | |
| | ET=+ UT=+00.00.05 | SET_OBS_STEP SET_OBS_STEP Command Parameter(s) : OBSERVATION_STEP SP03N500 Subsch. ID : 370 Det. descr. : SET OBSERVATION STEP | SC003500 ffff <hex> | |
| | ET=+ UT=+00.00.01 | SEND_DRCU_COMMAND SEND_DRCU_COMMAND Command Parameter(s) : DRCUCOMMAND SPD4N505 OVERRIDE SPD9N505 Subsch. ID : 370 Det. descr. : SEND A SINGLE COMMAND TO THE DRCU | SCD06505 90453e80 <hex> 0 <hex> (Def) | |
| | ET=+ UT=+00.00.02 | SET_OBS_STEP SET_OBS_STEP Command Parameter(s) : OBSERVATION_STEP SP03N500 Subsch. ID : 370 Det. descr. : SET OBSERVATION STEP | SC003500 10 <hex> | |

Mode_SMECFunc04b Open Loop Position Check
 File: H_COP_SPI_SMCP.xls
 Author: L.Lucas-hp



| Step No. | Time | Activity/Remarks | TC/TLM | Display/ Branch |
|----------|----------------------|---|---|-----------------|
| | ET=+ UT=+00.00.05 | SET_OBS_STEP SET_OBS_STEP Command Parameter(s) : OBSERVATION_STEP SP03N500 Subsch. ID : 370 Det. descr. : SET OBSERVATION STEP | SC003500 ffff <hex> | |
| | ET=+ UT=+00.00.01 | SEND_DRCU_COMMAND SEND_DRCU_COMMAND Command Parameter(s) : DRCUCOMMAND SPD4N505 OVERRIDE SPD9N505 Subsch. ID : 370 Det. descr. : SEND A SINGLE COMMAND TO THE DRCU | SCD06505 90454268 <hex> 0 <hex> (Def) | |
| | ET=+ UT=+00.00.02 | SET_OBS_STEP SET_OBS_STEP Command Parameter(s) : OBSERVATION_STEP SP03N500 Subsch. ID : 370 Det. descr. : SET OBSERVATION STEP | SC003500 11 <hex> | |
| | ET=+ UT=+00.00.05 | SET_OBS_STEP SET_OBS_STEP Command Parameter(s) : OBSERVATION_STEP SP03N500 Subsch. ID : 370 Det. descr. : SET OBSERVATION STEP | SC003500 ffff <hex> | |
| | ET=+ UT=+00.00.01 | SEND_DRCU_COMMAND SEND_DRCU_COMMAND Command Parameter(s) : DRCUCOMMAND SPD4N505 OVERRIDE SPD9N505 Subsch. ID : 370 Det. descr. : SEND A SINGLE COMMAND TO THE DRCU | SCD06505 90454650 <hex> 0 <hex> (Def) | |
| | ET=+ UT=+00.00.02 | SET_OBS_STEP SET_OBS_STEP Command Parameter(s) : OBSERVATION_STEP SP03N500 Subsch. ID : 370 Det. descr. : SET OBSERVATION STEP | SC003500 12 <hex> | |

Mode_SMECFunc04b Open Loop Position Check
 File: H_COP_SPI_SMCP.xls
 Author: L.Lucas-hp



| Step No. | Time | Activity/Remarks | TC/TLM | Display/ Branch |
|----------|----------------------|--|---|-----------------|
| | ET=+ UT=+00.00.05 | SET_OBS_STEP SET_OBS_STEP Command Parameter(s) : OBSERVATION_STEP SP03N500 Subsch. ID : 370 Det. descr. : SET OBSERVATION STEP | SC003500 ffff <hex> | |
| | ET=+ UT=+00.00.01 | SEND_DRCU_COMMAND SEND_DRCU_COMMAND Command Parameter(s) : DRCUCOMMAND SPD4N505 OVERRIDE SPD9N505 Subsch. ID : 370 Det. descr. : SEND A SINGLE COMMAND TO THE DRCU | SCD06505 90454a38 <hex> 0 <hex> (Def) | |
| | ET=+ UT=+00.00.02 | SET_OBS_STEP SET_OBS_STEP Command Parameter(s) : OBSERVATION_STEP SP03N500 Subsch. ID : 370 Det. descr. : SET OBSERVATION STEP | SC003500 13 <hex> | |
| | ET=+ UT=+00.00.05 | SET_OBS_STEP SET_OBS_STEP Command Parameter(s) : OBSERVATION_STEP SP03N500 Subsch. ID : 370 Det. descr. : SET OBSERVATION STEP | SC003500 ffff <hex> | |
| | ET=+ UT=+00.00.01 | SEND_DRCU_COMMAND SEND_DRCU_COMMAND Command Parameter(s) : DRCUCOMMAND SPD4N505 OVERRIDE SPD9N505 Subsch. ID : 370 Det. descr. : SEND A SINGLE COMMAND TO THE DRCU | SCD06505 90454e20 <hex> 0 <hex> (Def) | |
| | ET=+ UT=+00.00.02 | SET_OBS_STEP SET_OBS_STEP Command Parameter(s) : OBSERVATION_STEP SP03N500 Subsch. ID : 370 Det. descr. : SET OBSERVATION STEP | SC003500 14 <hex> | |

Mode_SMECFunc04b Open Loop Position Check
 File: H_COP_SPI_SMCP.xls
 Author: L.Lucas-hp



| Step No. | Time | Activity/Remarks | TC/TLM | Display/ Branch |
|----------|----------------------|---|---|-----------------|
| | ET=+ UT=+00.00.05 | SET_OBS_STEP SET_OBS_STEP Command Parameter(s) : OBSERVATION_STEP SP03N500 Subsch. ID : 370 Det. descr. : SET OBSERVATION STEP | SC003500 ffff <hex> | |
| | ET=+ UT=+00.00.01 | SEND_DRCU_COMMAND SEND_DRCU_COMMAND Command Parameter(s) : DRCUCOMMAND SPD4N505 OVERRIDE SPD9N505 Subsch. ID : 370 Det. descr. : SEND A SINGLE COMMAND TO THE DRCU | SCD06505 90455208 <hex> 0 <hex> (Def) | |
| | ET=+ UT=+00.00.02 | SET_OBS_STEP SET_OBS_STEP Command Parameter(s) : OBSERVATION_STEP SP03N500 Subsch. ID : 370 Det. descr. : SET OBSERVATION STEP | SC003500 15 <hex> | |
| | ET=+ UT=+00.00.05 | SET_OBS_STEP SET_OBS_STEP Command Parameter(s) : OBSERVATION_STEP SP03N500 Subsch. ID : 370 Det. descr. : SET OBSERVATION STEP | SC003500 ffff <hex> | |
| | ET=+ UT=+00.00.01 | SEND_DRCU_COMMAND SEND_DRCU_COMMAND Command Parameter(s) : DRCUCOMMAND SPD4N505 OVERRIDE SPD9N505 Subsch. ID : 370 Det. descr. : SEND A SINGLE COMMAND TO THE DRCU | SCD06505 904555f0 <hex> 0 <hex> (Def) | |
| | ET=+ UT=+00.00.02 | SET_OBS_STEP SET_OBS_STEP Command Parameter(s) : OBSERVATION_STEP SP03N500 Subsch. ID : 370 Det. descr. : SET OBSERVATION STEP | SC003500 16 <hex> | |

Mode_SMECFunc04b Open Loop Position Check
 File: H_COP_SPI_SMCP.xls
 Author: L.Lucas-hp



| Step No. | Time | Activity/Remarks | TC/TLM | Display/ Branch |
|----------|----------------------|---|---|-----------------|
| | ET=+ UT=+00.00.05 | SET_OBS_STEP SET_OBS_STEP Command Parameter(s) : OBSERVATION_STEP SP03N500 Subsch. ID : 370 Det. descr. : SET OBSERVATION STEP | SC003500 ffff <hex> | |
| | ET=+ UT=+00.00.01 | SEND_DRCU_COMMAND SEND_DRCU_COMMAND Command Parameter(s) : DRCUCOMMAND SPD4N505 OVERRIDE SPD9N505 Subsch. ID : 370 Det. descr. : SEND A SINGLE COMMAND TO THE DRCU | SCD06505 904559d8 <hex> 0 <hex> (Def) | |
| | ET=+ UT=+00.00.02 | SET_OBS_STEP SET_OBS_STEP Command Parameter(s) : OBSERVATION_STEP SP03N500 Subsch. ID : 370 Det. descr. : SET OBSERVATION STEP | SC003500 17 <hex> | |
| | ET=+ UT=+00.00.05 | SET_OBS_STEP SET_OBS_STEP Command Parameter(s) : OBSERVATION_STEP SP03N500 Subsch. ID : 370 Det. descr. : SET OBSERVATION STEP | SC003500 ffff <hex> | |
| | ET=+ UT=+00.00.01 | SEND_DRCU_COMMAND SEND_DRCU_COMMAND Command Parameter(s) : DRCUCOMMAND SPD4N505 OVERRIDE SPD9N505 Subsch. ID : 370 Det. descr. : SEND A SINGLE COMMAND TO THE DRCU | SCD06505 90455dc0 <hex> 0 <hex> (Def) | |
| | ET=+ UT=+00.00.02 | SET_OBS_STEP SET_OBS_STEP Command Parameter(s) : OBSERVATION_STEP SP03N500 Subsch. ID : 370 Det. descr. : SET OBSERVATION STEP | SC003500 18 <hex> | |

Mode_SMECFunc04b Open Loop Position Check
 File: H_COP_SPI_SMCP.xls
 Author: L.Lucas-hp



| Step No. | Time | Activity/Remarks | TC/TLM | Display/ Branch |
|----------|----------------------|--|---|-----------------|
| | ET=+ UT=+00.00.05 | SET_OBS_STEP SET_OBS_STEP Command Parameter(s) : OBSERVATION_STEP SP03N500 Subsch. ID : 370 Det. descr. : SET OBSERVATION STEP | SC003500 ffff <hex> | |
| | ET=+ UT=+00.00.01 | SEND_DRCU_COMMAND SEND_DRCU_COMMAND Command Parameter(s) : DRCUCOMMAND SPD4N505 OVERRIDE SPD9N505 Subsch. ID : 370 Det. descr. : SEND A SINGLE COMMAND TO THE DRCU | SCD06505 904561a8 <hex> 0 <hex> (Def) | |
| | ET=+ UT=+00.00.02 | SET_OBS_STEP SET_OBS_STEP Command Parameter(s) : OBSERVATION_STEP SP03N500 Subsch. ID : 370 Det. descr. : SET OBSERVATION STEP | SC003500 19 <hex> | |
| | ET=+ UT=+00.00.05 | SET_OBS_STEP SET_OBS_STEP Command Parameter(s) : OBSERVATION_STEP SP03N500 Subsch. ID : 370 Det. descr. : SET OBSERVATION STEP | SC003500 ffff <hex> | |
| | ET=+ UT=+00.00.01 | SEND_DRCU_COMMAND SEND_DRCU_COMMAND Command Parameter(s) : DRCUCOMMAND SPD4N505 OVERRIDE SPD9N505 Subsch. ID : 370 Det. descr. : SEND A SINGLE COMMAND TO THE DRCU | SCD06505 90456590 <hex> 0 <hex> (Def) | |
| | ET=+ UT=+00.00.02 | SET_OBS_STEP SET_OBS_STEP Command Parameter(s) : OBSERVATION_STEP SP03N500 Subsch. ID : 370 Det. descr. : SET OBSERVATION STEP | SC003500 1a <hex> | |

Mode_SMECFunc04b Open Loop Position Check
 File: H_COP_SPI_SMCP.xls
 Author: L.Lucas-hp



| Step No. | Time | Activity/Remarks | TC/TLM | Display/ Branch |
|----------|----------------------|--|---|-----------------|
| | ET=+ UT=+00.00.05 | SET_OBS_STEP SET_OBS_STEP Command Parameter(s) : OBSERVATION_STEP SP03N500 Subsch. ID : 370 Det. descr. : SET OBSERVATION STEP | SC003500 ffff <hex> | |
| | ET=+ UT=+00.00.01 | SEND_DRCU_COMMAND SEND_DRCU_COMMAND Command Parameter(s) : DRCUCOMMAND SPD4N505 OVERRIDE SPD9N505 Subsch. ID : 370 Det. descr. : SEND A SINGLE COMMAND TO THE DRCU | SCD06505 90456978 <hex> 0 <hex> (Def) | |
| | ET=+ UT=+00.00.02 | SET_OBS_STEP SET_OBS_STEP Command Parameter(s) : OBSERVATION_STEP SP03N500 Subsch. ID : 370 Det. descr. : SET OBSERVATION STEP | SC003500 1b <hex> | |
| | ET=+ UT=+00.00.05 | SET_OBS_STEP SET_OBS_STEP Command Parameter(s) : OBSERVATION_STEP SP03N500 Subsch. ID : 370 Det. descr. : SET OBSERVATION STEP | SC003500 ffff <hex> | |
| | ET=+ UT=+00.00.01 | SEND_DRCU_COMMAND SEND_DRCU_COMMAND Command Parameter(s) : DRCUCOMMAND SPD4N505 OVERRIDE SPD9N505 Subsch. ID : 370 Det. descr. : SEND A SINGLE COMMAND TO THE DRCU | SCD06505 90456d60 <hex> 0 <hex> (Def) | |
| | ET=+ UT=+00.00.02 | SET_OBS_STEP SET_OBS_STEP Command Parameter(s) : OBSERVATION_STEP SP03N500 Subsch. ID : 370 Det. descr. : SET OBSERVATION STEP | SC003500 1c <hex> | |

Mode_SMECFunc04b Open Loop Position Check
 File: H_COP_SPI_SMCP.xls
 Author: L.Lucas-hp



| Step No. | Time | Activity/Remarks | TC/TLM | Display/ Branch |
|----------|----------------------|---|---|-----------------|
| | ET=+ UT=+00.00.05 | SET_OBS_STEP SET_OBS_STEP Command Parameter(s) : OBSERVATION_STEP SP03N500 Subsch. ID : 370 Det. descr. : SET OBSERVATION STEP | SC003500 ffff <hex> | |
| | ET=+ UT=+00.00.01 | SEND_DRCU_COMMAND SEND_DRCU_COMMAND Command Parameter(s) : DRCUCOMMAND SPD4N505 OVERRIDE SPD9N505 Subsch. ID : 370 Det. descr. : SEND A SINGLE COMMAND TO THE DRCU | SCD06505 90457148 <hex> 0 <hex> (Def) | |
| | ET=+ UT=+00.00.02 | SET_OBS_STEP SET_OBS_STEP Command Parameter(s) : OBSERVATION_STEP SP03N500 Subsch. ID : 370 Det. descr. : SET OBSERVATION STEP | SC003500 1d <hex> | |
| | ET=+ UT=+00.00.05 | SET_OBS_STEP SET_OBS_STEP Command Parameter(s) : OBSERVATION_STEP SP03N500 Subsch. ID : 370 Det. descr. : SET OBSERVATION STEP | SC003500 ffff <hex> | |
| | ET=+ UT=+00.00.01 | SEND_DRCU_COMMAND SEND_DRCU_COMMAND Command Parameter(s) : DRCUCOMMAND SPD4N505 OVERRIDE SPD9N505 Subsch. ID : 370 Det. descr. : SEND A SINGLE COMMAND TO THE DRCU | SCD06505 90457530 <hex> 0 <hex> (Def) | |
| | ET=+ UT=+00.00.02 | SET_OBS_STEP SET_OBS_STEP Command Parameter(s) : OBSERVATION_STEP SP03N500 Subsch. ID : 370 Det. descr. : SET OBSERVATION STEP | SC003500 1e <hex> | |

Mode_SMECFunc04b Open Loop Position Check
 File: H_COP_SPI_SMCP.xls
 Author: L.Lucas-hp



| Step No. | Time | Activity/Remarks | TC/TLM | Display/ Branch |
|----------|----------------------|--|---|-----------------|
| | ET=+ UT=+00.00.05 | SET_OBS_STEP SET_OBS_STEP Command Parameter(s) : OBSERVATION_STEP SP03N500 Subsch. ID : 370 Det. descr. : SET OBSERVATION STEP | SC003500 ffff <hex> | |
| | ET=+ UT=+00.00.01 | SEND_DRCU_COMMAND SEND_DRCU_COMMAND Command Parameter(s) : DRCUCOMMAND SPD4N505 OVERRIDE SPD9N505 Subsch. ID : 370 Det. descr. : SEND A SINGLE COMMAND TO THE DRCU | SCD06505 90457918 <hex> 0 <hex> (Def) | |
| | ET=+ UT=+00.00.02 | SET_OBS_STEP SET_OBS_STEP Command Parameter(s) : OBSERVATION_STEP SP03N500 Subsch. ID : 370 Det. descr. : SET OBSERVATION STEP | SC003500 1f <hex> | |
| | ET=+ UT=+00.00.05 | SET_OBS_STEP SET_OBS_STEP Command Parameter(s) : OBSERVATION_STEP SP03N500 Subsch. ID : 370 Det. descr. : SET OBSERVATION STEP | SC003500 ffff <hex> | |
| | ET=+ UT=+00.00.01 | SEND_DRCU_COMMAND SEND_DRCU_COMMAND Command Parameter(s) : DRCUCOMMAND SPD4N505 OVERRIDE SPD9N505 Subsch. ID : 370 Det. descr. : SEND A SINGLE COMMAND TO THE DRCU | SCD06505 90457d00 <hex> 0 <hex> (Def) | |
| | ET=+ UT=+00.00.02 | SET_OBS_STEP SET_OBS_STEP Command Parameter(s) : OBSERVATION_STEP SP03N500 Subsch. ID : 370 Det. descr. : SET OBSERVATION STEP | SC003500 20 <hex> | |

Mode_SMECFunc04b Open Loop Position Check
 File: H_COP_SPI_SMCP.xls
 Author: L.Lucas-hp



| Step No. | Time | Activity/Remarks | TC/TLM | Display/ Branch |
|----------|----------------------|--|---|-----------------|
| | ET=+ UT=+00.00.05 | SET_OBS_STEP SET_OBS_STEP Command Parameter(s) : OBSERVATION_STEP SP03N500 Subsch. ID : 370 Det. descr. : SET OBSERVATION STEP | SC003500 ffff <hex> | |
| | ET=+ UT=+00.00.01 | SEND_DRCU_COMMAND SEND_DRCU_COMMAND Command Parameter(s) : DRCUCOMMAND SPD4N505 OVERRIDE SPD9N505 Subsch. ID : 370 Det. descr. : SEND A SINGLE COMMAND TO THE DRCU | SCD06505 904580e8 <hex> 0 <hex> (Def) | |
| | ET=+ UT=+00.00.02 | SET_OBS_STEP SET_OBS_STEP Command Parameter(s) : OBSERVATION_STEP SP03N500 Subsch. ID : 370 Det. descr. : SET OBSERVATION STEP | SC003500 21 <hex> | |
| | ET=+ UT=+00.00.05 | SET_OBS_STEP SET_OBS_STEP Command Parameter(s) : OBSERVATION_STEP SP03N500 Subsch. ID : 370 Det. descr. : SET OBSERVATION STEP | SC003500 ffff <hex> | |
| | ET=+ UT=+00.00.01 | SEND_DRCU_COMMAND SEND_DRCU_COMMAND Command Parameter(s) : DRCUCOMMAND SPD4N505 OVERRIDE SPD9N505 Subsch. ID : 370 Det. descr. : SEND A SINGLE COMMAND TO THE DRCU | SCD06505 904584d0 <hex> 0 <hex> (Def) | |
| | ET=+ UT=+00.00.02 | SET_OBS_STEP SET_OBS_STEP Command Parameter(s) : OBSERVATION_STEP SP03N500 Subsch. ID : 370 Det. descr. : SET OBSERVATION STEP | SC003500 22 <hex> | |

Mode_SMECFunc04b Open Loop Position Check
 File: H_COP_SPI_SMCP.xls
 Author: L.Lucas-hp



| Step No. | Time | Activity/Remarks | TC/TLM | Display/ Branch |
|----------|----------------------|--|---|-----------------|
| | ET=+ UT=+00.00.05 | SET_OBS_STEP SET_OBS_STEP Command Parameter(s) : OBSERVATION_STEP SP03N500 Subsch. ID : 370 Det. descr. : SET OBSERVATION STEP | SC003500 ffff <hex> | |
| | ET=+ UT=+00.00.01 | SEND_DRCU_COMMAND SEND_DRCU_COMMAND Command Parameter(s) : DRCUCOMMAND SPD4N505 OVERRIDE SPD9N505 Subsch. ID : 370 Det. descr. : SEND A SINGLE COMMAND TO THE DRCU | SCD06505 904588b8 <hex> 0 <hex> (Def) | |
| | ET=+ UT=+00.00.02 | SET_OBS_STEP SET_OBS_STEP Command Parameter(s) : OBSERVATION_STEP SP03N500 Subsch. ID : 370 Det. descr. : SET OBSERVATION STEP | SC003500 23 <hex> | |
| | ET=+ UT=+00.00.05 | SET_OBS_STEP SET_OBS_STEP Command Parameter(s) : OBSERVATION_STEP SP03N500 Subsch. ID : 370 Det. descr. : SET OBSERVATION STEP | SC003500 ffff <hex> | |
| | ET=+ UT=+00.00.01 | SEND_DRCU_COMMAND SEND_DRCU_COMMAND Command Parameter(s) : DRCUCOMMAND SPD4N505 OVERRIDE SPD9N505 Subsch. ID : 370 Det. descr. : SEND A SINGLE COMMAND TO THE DRCU | SCD06505 90458ca0 <hex> 0 <hex> (Def) | |
| | ET=+ UT=+00.00.02 | SET_OBS_STEP SET_OBS_STEP Command Parameter(s) : OBSERVATION_STEP SP03N500 Subsch. ID : 370 Det. descr. : SET OBSERVATION STEP | SC003500 24 <hex> | |

Mode_SMECFunc04b Open Loop Position Check
 File: H_COP_SPI_SMCP.xls
 Author: L.Lucas-hp



| Step No. | Time | Activity/Remarks | TC/TLM | Display/ Branch |
|----------|----------------------|--|---|-----------------|
| | ET=+ UT=+00.00.05 | SET_OBS_STEP SET_OBS_STEP Command Parameter(s) : OBSERVATION_STEP SP03N500 Subsch. ID : 370 Det. descr. : SET OBSERVATION STEP | SC003500 ffff <hex> | |
| | ET=+ UT=+00.00.01 | SEND_DRCU_COMMAND SEND_DRCU_COMMAND Command Parameter(s) : DRCUCOMMAND SPD4N505 OVERRIDE SPD9N505 Subsch. ID : 370 Det. descr. : SEND A SINGLE COMMAND TO THE DRCU | SCD06505 90459088 <hex> 0 <hex> (Def) | |
| | ET=+ UT=+00.00.02 | SET_OBS_STEP SET_OBS_STEP Command Parameter(s) : OBSERVATION_STEP SP03N500 Subsch. ID : 370 Det. descr. : SET OBSERVATION STEP | SC003500 25 <hex> | |
| | ET=+ UT=+00.00.05 | SET_OBS_STEP SET_OBS_STEP Command Parameter(s) : OBSERVATION_STEP SP03N500 Subsch. ID : 370 Det. descr. : SET OBSERVATION STEP | SC003500 ffff <hex> | |
| | ET=+ UT=+00.00.01 | SEND_DRCU_COMMAND SEND_DRCU_COMMAND Command Parameter(s) : DRCUCOMMAND SPD4N505 OVERRIDE SPD9N505 Subsch. ID : 370 Det. descr. : SEND A SINGLE COMMAND TO THE DRCU | SCD06505 90459470 <hex> 0 <hex> (Def) | |
| | ET=+ UT=+00.00.02 | SET_OBS_STEP SET_OBS_STEP Command Parameter(s) : OBSERVATION_STEP SP03N500 Subsch. ID : 370 Det. descr. : SET OBSERVATION STEP | SC003500 26 <hex> | |

Mode_SMECFunc04b Open Loop Position Check
 File: H_COP_SPI_SMCP.xls
 Author: L.Lucas-hp



| Step No. | Time | Activity/Remarks | TC/TLM | Display/ Branch |
|----------|----------------------|--|---|-----------------|
| | ET=+ UT=+00.00.05 | SET_OBS_STEP SET_OBS_STEP Command Parameter(s) : OBSERVATION_STEP SP03N500 Subsch. ID : 370 Det. descr. : SET OBSERVATION STEP | SC003500 ffff <hex> | |
| | ET=+ UT=+00.00.01 | SEND_DRCU_COMMAND SEND_DRCU_COMMAND Command Parameter(s) : DRCUCOMMAND SPD4N505 OVERRIDE SPD9N505 Subsch. ID : 370 Det. descr. : SEND A SINGLE COMMAND TO THE DRCU | SCD06505 904503e8 <hex> 0 <hex> (Def) | |
| | ET=+ UT=+00.01.18 | SET_OBS_STEP SET_OBS_STEP Command Parameter(s) : OBSERVATION_STEP SP03N500 Subsch. ID : 370 Det. descr. : SET OBSERVATION STEP | SC003500 0 <hex> | |
| | ET=+ UT=+00.00.00 | SET_BBID SET_BBID Command Parameter(s) : BUILDING_BLOCK_ID SP01N500 Subsch. ID : 370 Det. descr. : SET BUILDING BLOCK IDENTIFIER | SC001500 80000000 <hex> | |
| | | Note: Check with the Instrument Team before continuing with test | | |
| | ET=+ UT=+00.00.01 | SET_OBS_STEP SET_OBS_STEP Command Parameter(s) : OBSERVATION_STEP SP03N500 Subsch. ID : 370 Det. descr. : SET OBSERVATION STEP | SC003500 0 <hex> | |
| | ET=+ UT=+00.00.00 | SET_BBID SET_BBID Command Parameter(s) : BUILDING_BLOCK_ID SP01N500 Subsch. ID : 370 Det. descr. : SET BUILDING BLOCK IDENTIFIER | SC001500 80000000 <hex> | |

Mode_SMECFunc04b Open Loop Position Check
 File: H_COP_SPI_SMCP.xls
 Author: L.Lucas-hp



| Step No. | Time | Activity/Remarks | TC/TLM | Display/ Branch |
|----------|----------------------|--|---|-------------------|
| | ET=+ UT=+00.00.02 | SEND_DRCU_COMMAND SEND_DRCU_COMMAND Command Parameter(s) : DRCUCOMMAND SPD4N505 OVERRIDE SPD9N505 Subsch. ID : 370 Det. descr. : SEND A SINGLE COMMAND TO THE DRCU | SCD06505 91c10000 <hex> 0 <hex> (Def) | |
| | ET=+ UT=+00.00.01 | FLUSH_FIFO FLUSH_FIFO Command Parameter(s) : FIFOFLAGS SPD0N505 Subsch. ID : 370 Det. descr. : FORCE DPU TO READ SCIENCE DATA FROM FIFOS AND FLUSH CONTENTS | SCD01505 2000 <hex> | |
| 5 | | Set default end conditions | | Next Step: END |
| | | Note that a TM(5,1) packet [New_Step_Report] is generated after each of the following SET_OBS_STEP telecommands | | |
| | ET=+ UT=+00.00.00 | SET_OBS_STEP SET_OBS_STEP Command Parameter(s) : OBSERVATION_STEP SP03N500 Subsch. ID : 370 Det. descr. : SET OBSERVATION STEP | SC003500 0 <hex> | |
| | ET=+ UT=+00.00.01 | SET_BBID SET_BBID Command Parameter(s) : BUILDING_BLOCK_ID SP01N500 Subsch. ID : 370 Det. descr. : SET BUILDING BLOCK IDENTIFIER | SC001500 80000000 <hex> | |
| | | Verify Telemetry BBFULLTYPE SM2LN500 | = Null | AND=ZAZ90999 |
| | ET=+ UT=+00.00.00 | SET_OBS_STEP SET_OBS_STEP Command Parameter(s) : OBSERVATION_STEP SP03N500 Subsch. ID : 370 Det. descr. : SET OBSERVATION STEP | SC003500 0 <hex> | |

Mode_SMECFunc04b Open Loop Position Check
 File: H_COP_SPI_SMCP.xls
 Author: L.Lucas-hp



| Step No. | Time | Activity/Remarks | TC/TLM | Display/ Branch | |
|-------------------------|----------------------|--|---|------------------|--------------|
| | ET=+ UT=+00.00.01 | SET_BBID Command Parameter(s) : BUILDING_BLOCK_ID Subsch. ID : 370 Det. descr. : SET BUILDING BLOCK IDENTIFIER | SET_BBID SP01N500 80030001 <hex> | SC001500 | |
| | | Verify Telemetry BBFULLTYPE | SM2LN500 | = EndObs | AND=ZAZ90999 |
| | ET=+ UT=+00.00.00 | SET_OBS_STEP Command Parameter(s) : OBSERVATION_STEP Subsch. ID : 370 Det. descr. : SET OBSERVATION STEP | SET_OBS_STEP SP03N500 1 <hex> | SC003500 | |
| | ET=+ UT=+00.00.01 | SET_OBSID Command Parameter(s) : OBSERVATION_ID Subsch. ID : 370 Det. descr. : SET OBSERVATION IDENTIFIER | SET_OBSID SP00N500 00000000 <hex> | SC000500 | |
| | | Verify Telemetry OBSID | SM10N500 | = 00000000 <hex> | AND=ZAZ90999 |
| | ET=+ UT=+00.00.00 | SET_OBS_STEP Command Parameter(s) : OBSERVATION_STEP Subsch. ID : 370 Det. descr. : SET OBSERVATION STEP | SET_OBS_STEP SP03N500 0 <hex> | SC003500 | |
| | ET=+ UT=+00.00.01 | SET_BBID Command Parameter(s) : BUILDING_BLOCK_ID Subsch. ID : 370 Det. descr. : SET BUILDING BLOCK IDENTIFIER | SET_BBID SP01N500 80000000 <hex> | SC001500 | |
| | | Verify Telemetry BBFULLTYPE | SM2LN500 | = Null | AND=ZAZ90999 |
| End of Procedure | | | | | |