

Mode_Go2REDY
 File: H_COP_SPI_REDY.xls
 Author: L.Lucas-hp



Procedure Summary

Objectives

The purpose of this procedure is to put SPIRE in REDY Mode on RED side.
 Based on Procedure:
 Mode_Go2REDY (v1)
 Puts SPIRE in REDY mode after end of functional tests

Summary of Constraints

n/a

Spacecraft Configuration

Start of Procedure

End of Procedure

Mode: SPIRE REDY

Reference File(s)

Input Command Sequences

Output Command Sequences

HCSREDY

Referenced Displays

ANDs	GRDs	SLDs
SA_7_559		
ZAZ90999		
SA_1_559		

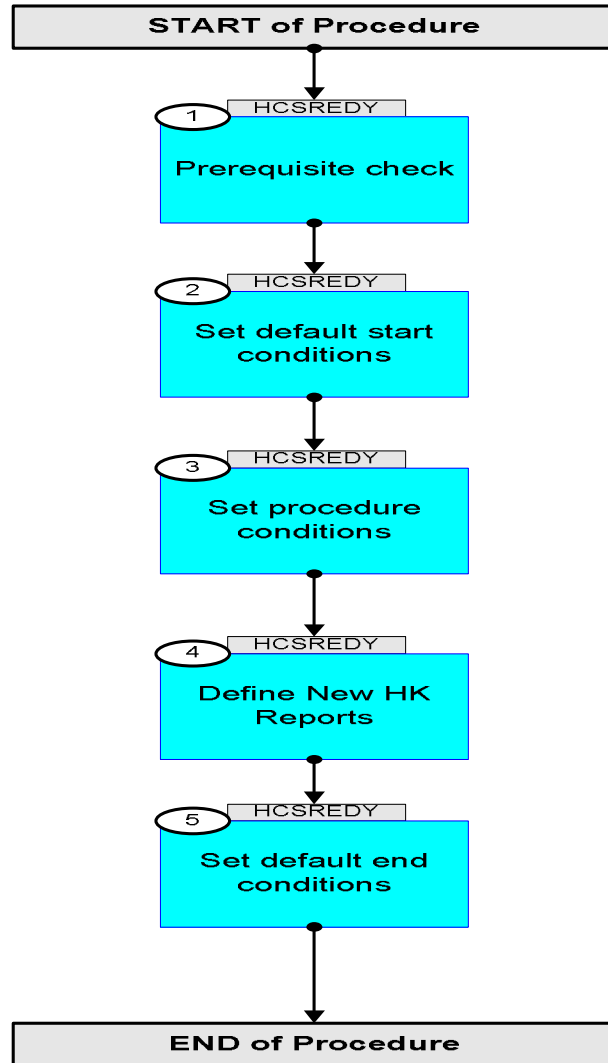
Configuration Control Information

DATE	FOP ISSUE	VERSION	MODIFICATION DESCRIPTION	AUTHOR	SPR REF
22/12/08		1	Created	L.Lucas-hp	
14/01/09		1.01	Validation : Update AND	L.Lucas-hp	
27/01/09	2	2	Remove ETs for ease of Loading to manual stack	L.Lucas-hp	
26/02/09	2.1	3	Updated to include missing Set Obs Mode TC	L.Lucas-hp	

Mode_Go2REDY
File: H_COP_SPI_REDY.xls
Author: L.Lucas-hp



Procedure Flowchart Overview



Mode_Go2REDY
 File: H_COP_SPI_REDY.xls
 Author: L.Lucas-hp




Step No.	Time	Activity/Remarks	TC/TLM	Display/ Branch	AIT Comment
Beginning of Procedure					
HCSREDY TC Seq. Name :HCSREDY (SPIRE to REDY Mode) TimeTag Type: N Sub Schedule ID: □					
1		Prerequisite check		Next Step: 2	
1.1		HSC/ICC input			
		Verify that the HSC has supplied a valid OBSID value: OBS_ID = 0xnnnn nnnn			
1.2		TM Checks			
		Check Telemetry, for comparison later TM2N SMT1N500		AND=SA_7_559	
		Check Telemetry, for comparison later THSK SM00T500		AND=SA_7_559	
		Check telemetry, for comparison later MODE SM00M500		AND=SA_7_559	
2		Set default start conditions		Next Step: 3	
		Note that a TM(5,1) packet [New_Step_Report] is generated after each of the following SET_OBS_STEP telecommands			
	ET=+ UT=+00.00.00	SET_OBS_STEP Command Parameter(s) : OBSERVATION_STEP SP03N500 Subsch. ID : 370 Det. descr. : SET OBSERVATION STEP	SET_OBS_STEP SP03N500	SC003500	TC
	ET=+ UT=+00.00.01	SET_BBID Command Parameter(s) : BUILDING_BLOCK_ID SP01N500 Subsch. ID : 370 Det. descr. : SET BUILDING BLOCK IDENTIFIER	SET_BBID SP01N500	SC001500	TC
		Verify Telemetry BBFULLTYPE SM2LN500	SM2LN500	= ClearObs	AND=ZAZ90999

Mode_Go2REDY
 File: H_COP_SPI_REDY.xls
 Author: L.Lucas-hp



Step No.	Time	Activity/Remarks	TC/TLM	Display/ Branch	AIT Comment
	ET=+ UT=+00.00.00	SET_OBS_STEP Command Parameter(s) : OBSERVATION_STEP SP03N500 Subsch. ID : 370 Det. descr. : SET OBSERVATION STEP	SET_OBS_STEP SC003500 1 <hex>	TC	
	ET=+ UT=+00.00.01	SET_OBSID Command Parameter(s) : OBSERVATION_ID SP00N500 Subsch. ID : 370 Det. descr. : SET OBSERVATION IDENTIFIER	SET_OBSID SC000500 00000000 <hex>	TC	
		Verify Telemetry OBSID SM10N500	= 00000000 <hex>	AND=ZAZ90999	
	ET=+ UT=+00.00.00	SET_OBS_STEP Command Parameter(s) : OBSERVATION_STEP SP03N500 Subsch. ID : 370 Det. descr. : SET OBSERVATION STEP	SET_OBS_STEP SC003500 0 <hex>	TC	
	ET=+ UT=+00.00.01	SET_BBID Command Parameter(s) : BUILDING_BLOCK_ID SP01N500 Subsch. ID : 370 Det. descr. : SET BUILDING BLOCK IDENTIFIER	SET_BBID SC001500 80000000 <hex>	TC	
		Verify Telemetry BBFULLTYPE SM2LN500	= Null	AND=ZAZ90999	
	ET=+ UT=+00.00.00	SET_OBS_STEP Command Parameter(s) : OBSERVATION_STEP SP03N500 Subsch. ID : 370 Det. descr. : SET OBSERVATION STEP	SET_OBS_STEP SC003500 0 <hex>	TC	
	ET=+ UT=+00.00.01	SET_BBID Command Parameter(s) : BUILDING_BLOCK_ID SP01N500 Subsch. ID : 370 Det. descr. : SET BUILDING BLOCK IDENTIFIER	SET_BBID SC001500 80020001 <hex>	TC	
		Verify Telemetry BBFULLTYPE SM2LN500	= StartObs	AND=ZAZ90999	
3		Set procedure conditions		Next Step: 4	
	ET=+ UT=+00.00.00	RESET_DRCU_COUNTERS Subsch. ID : 370 Det. descr. : RESET DRCU COUNTERS	RESET_DRCU_COUNTERS SCD00505	TC	

Mode_Go2REDY
 File: H_COP_SPI_REDY.xls
 Author: L.Lucas-hp



Step No.	Time	Activity/Remarks	TC/TLM	Display/ Branch	AIT Comment
		Check Telemetry is incrementing at 4 second intervals THSK SM00T500		AND=SA_7_559	
		Execute Telecommand SET_OBS_MODE Command Parameter(s) : OBSERVING_MODE SP02N500 Subsch. ID : 370 Det. descr. : SET OBSERVING MODE	SC002500 200 <hex>	TC	
		Verify Telemetry MODE SM00M500	= REDY	AND=SA_7_559	
5		Set default end conditions		Next Step: END	
		Note that a TM(5,1) packet [New_Step_Report] is generated after each of the following SET_OBS_STEP telecommands			
	ET=+ UT=+00.00.00	SET_OBS_STEP SET_OBS_STEP Command Parameter(s) : OBSERVATION_STEP SP03N500 Subsch. ID : 370 Det. descr. : SET OBSERVATION STEP	SC003500 0 <hex>	TC	
	ET=+ UT=+00.00.01	SET_BBID SET_BBID Command Parameter(s) : BUILDING_BLOCK_ID SP01N500 Subsch. ID : 370 Det. descr. : SET BUILDING BLOCK IDENTIFIER	SC001500 80030001 <hex>	TC	
		Verify Telemetry BBFULLTYPE SM2LN500	= EndObs	AND=ZAZ90999	
	ET=+ UT=+00.00.00	SET_OBS_STEP SET_OBS_STEP Command Parameter(s) : OBSERVATION_STEP SP03N500 Subsch. ID : 370 Det. descr. : SET OBSERVATION STEP	SC003500 1 <hex>	TC	
	ET=+ UT=+00.00.01	SET_OBSID SET_OBSID Command Parameter(s) : OBSERVATION_ID SP00N500 Subsch. ID : 370 Det. descr. : SET OBSERVATION IDENTIFIER	SC000500 00000000 <hex>	TC	
		Verify Telemetry OBSID SM10N500	= 00000000 <hex>	AND=ZAZ90999	
	ET=+ UT=+00.00.00	SET_OBS_STEP SET_OBS_STEP Command Parameter(s) : OBSERVATION_STEP SP03N500 Subsch. ID : 370 Det. descr. : SET OBSERVATION STEP	SC003500 0 <hex>	TC	

Mode_Go2REDY File: H_COP_SPI_REDY.xls Author: L.Lucas-hp	
--	--

Step No.	Time	Activity/Remarks	TC/TLM	Display/ Branch	AIT Comment
	ET=+ UT=+00.00.01	SET_BBID SET_BBID <i>Command Parameter(s) :</i> BUILDING_BLOCK_ID SP01N500 <i>Subsch. ID : 370</i> <i>Det. descr. : SET BUILDING BLOCK IDENTIFIER</i>	SC001500 80000000 <hex>	TC	
		Verify Telemetry BBFULLTYPE SM2LN500	= Null	AND=ZAZ90999	
End of Sequence					
End of Procedure					