

Mode_Go2REDY
 File: H_COP_SPI_REDX.xls
 Author: L.Lucas-hp



Procedure Summary

Objectives

The purpose of this procedure is to put SPIRE in REDY mode.

Based on procedure:SPIRE-CP-REDY
 Name:Mode_Go2REDY
 Version number:2
 Generated:27/03/2009

Summary of Constraints

n/a

Spacecraft Configuration

Start of Procedure

End of Procedure

Mode = REDY

Reference File(s)

Input Command Sequences

Output Command Sequences

HCSREDX

Referenced Displays

ANDs	GRDs	SLDs
ZAZ90999		(None)
SA_6_559		

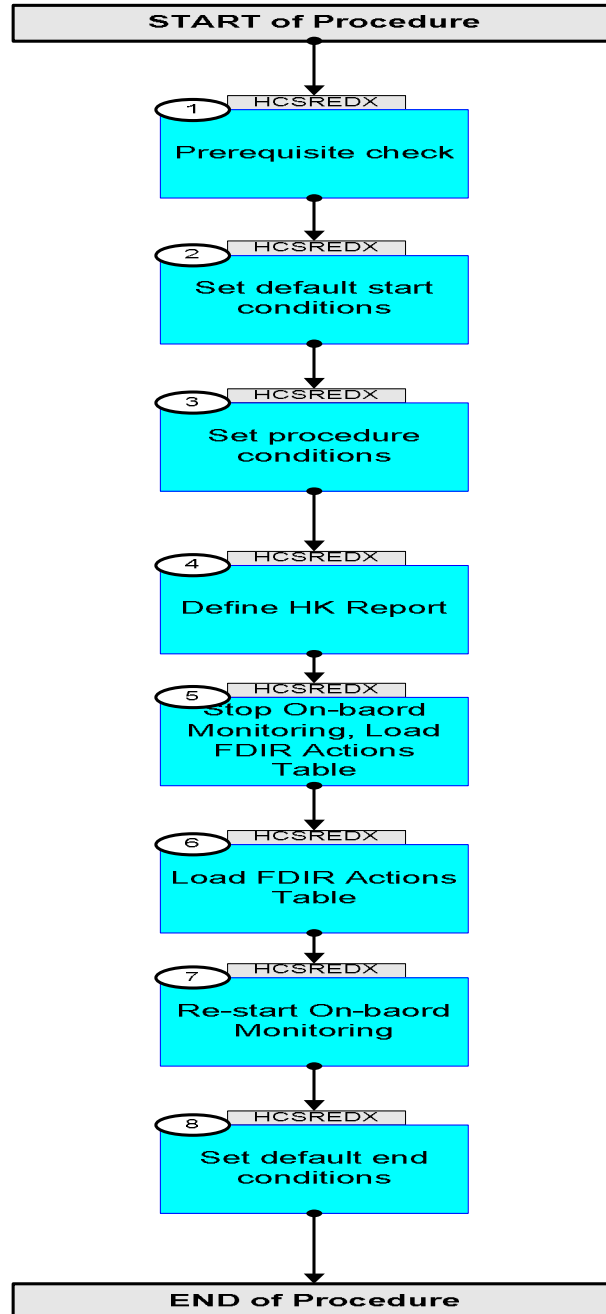
Configuration Control Information

DATE	FOP ISSUE	VERSION	MODIFICATION DESCRIPTION	AUTHOR	SPR REF
19/04/09	2.3	1	Created	L.Lucas-hp	
05/05/09	2.4	2	Remove ET	L.Lucas-hp	

Mode_Go2REDY
File: H_COP_SPI_REDY.xls
Author: L.Lucas-hp



Procedure Flowchart Overview



Mode_Go2REDY
 File: H_COP_SPI_REDX.xls
 Author: L.Lucas-hp



Step No.	Time	Activity/Remarks	TC/TLM	Display/ Branch
Beginning of Procedure				
TC Seq. Name : HCSREDX (Mode_Go2REDY)				
TimeTag Type: Y Sub Schedule ID: <input type="checkbox"/>				
1		Prerequisite check		Next Step: 2
1.1		HSC/ICC input		<input type="checkbox"/>
		Verify that the HSC has supplied a valid OBSID value: OBS_ID = 0xnnnn nnnn		
2		Set default start conditions		Next Step: 3
		Note that a TM(5,1) packet [New_Step_Report] is generated after each of the following SET_OBS_STEP telecommands		
	ET=+ UT=+00.00.00	SET_OBS_STEP Command Parameter(s) : OBSERVATION_STEP Subsch. ID : 370 Det. descr. : SET OBSERVATION STEP	SET_OBS_STEP SP03N500	SC003500 0 <hex>
	ET=+ UT=+00.00.01	SET_BBID Command Parameter(s) : BUILDING_BLOCK_ID Subsch. ID : 370 Det. descr. : SET BUILDING BLOCK IDENTIFIER	SET_BBID SP01N500	SC001500 80010001 <hex>
		Verify Telemetry BBFULLTYPE	SM2LN500	= ClearObs AND=ZAZ90999
	ET=+ UT=+00.00.00	SET_OBS_STEP Command Parameter(s) : OBSERVATION_STEP Subsch. ID : 370 Det. descr. : SET OBSERVATION STEP	SET_OBS_STEP SP03N500	SC003500 1 <hex>

Mode_Go2REDY
 File: H_COP_SPI_REDX.xls
 Author: L.Lucas-hp



Step No.	Time	Activity/Remarks	TC/TLM	Display/ Branch
	ET=+ UT=+00.00.01	SET_OBSID Command Parameter(s) : OBSERVATION_ID Subsch. ID : 370 Det. descr. : SET OBSERVATION IDENTIFIER	SET_OBSID SP00N500 00000000 <hex>	
		Verify Telemetry OBSID SM10N500	= 00000000 <hex>	AND=ZAZ90999
	ET=+ UT=+00.00.00	SET_OBS_STEP Command Parameter(s) : OBSERVATION_STEP Subsch. ID : 370 Det. descr. : SET OBSERVATION STEP	SET_OBS_STEP SP03N500 0 <hex>	
	ET=+ UT=+00.00.01	SET_BBID Command Parameter(s) : BUILDING_BLOCK_ID Subsch. ID : 370 Det. descr. : SET BUILDING BLOCK IDENTIFIER	SET_BBID SP01N500 80000000 <hex>	
		Verify Telemetry BBFULLTYPE SM2LN500	= Null	AND=ZAZ90999
	ET=+ UT=+00.00.00	SET_OBS_STEP Command Parameter(s) : OBSERVATION_STEP Subsch. ID : 370 Det. descr. : SET OBSERVATION STEP	SET_OBS_STEP SP03N500 0 <hex>	
	ET=+ UT=+00.00.01	SET_BBID Command Parameter(s) : BUILDING_BLOCK_ID Subsch. ID : 370 Det. descr. : SET BUILDING BLOCK IDENTIFIER	SET_BBID SP01N500 80020001 <hex>	
		Verify Telemetry BBFULLTYPE SM2LN500	= StartObs	AND=ZAZ90999
3		Set procedure conditions		Next Step: 4

Mode_Go2REDY
 File: H_COP_SPI_REDX.xls
 Author: L.Lucas-hp



Step No.	Time	Activity/Remarks	TC/TLM	Display/ Branch
	ET=+ UT=+00.00.00	RESET_DRCU_COUNTERS Subsch. ID : 370 Det. descr. : RESET DRCU COUNTERS	SCD00505	
		Verify that the TRESET parameter has the same value as the THSK parameter TRESET SM01T500	same as THSK	AND=ZAZ90999
		THSK SM00T500	any	AND=ZAZ90999
		Note that a TM(5,1) packet [New_Step_Report] is generated after each of the following SET_OBS_STEP telecommands		
	ET=+ UT=+00.00.00	SET_OBS_STEP Command Parameter(s) : OBSERVATION_STEP SP03N500 Subsch. ID : 370 Det. descr. : SET OBSERVATION STEP	SC003500 1 <hex>	
	ET=+ UT=+00.00.01	SET_OBSID Command Parameter(s) : OBSERVATION_ID SP00N500 Subsch. ID : 370 Det. descr. : SET OBSERVATION IDENTIFIER	SC000500 OBS_ID	
		Verify Telemetry OBSID SM10N500	OBS_ID	AND=ZAZ90999
	ET=+ UT=+00.00.00	SET_OBS_STEP Command Parameter(s) : OBSERVATION_STEP SP03N500 Subsch. ID : 370 Det. descr. : SET OBSERVATION STEP	SC003500 0 <hex>	
	ET=+ UT=+00.00.01	SET_BBID Command Parameter(s) : BUILDING_BLOCK_ID SP01N500 Subsch. ID : 370 Det. descr. : SET BUILDING BLOCK IDENTIFIER	SC001500 80000000 <hex>	
		Verify Telemetry BBFULLTYPE SM2LN500	= Null	AND=ZAZ90999

Mode_Go2REDY
 File: H_COP_SPI_REDX.xls
 Author: L.Lucas-hp



Step No.	Time	Activity/Remarks	TC/TLM	Display/ Branch
	ET=+ UT=+00.00.00	SET_OBS_STEP SET_OBS_STEP Command Parameter(s) : OBSERVATION_STEP SP03N500 TC Control Flags : GBM IL DSE --Y -- --- Subsch. ID : 370 Det. descr. : SET OBSERVATION STEP	SC003500 0 <hex>	
	ET=+ UT=+00.00.01	SET_BBID SET_BBID Command Parameter(s) : BUILDING_BLOCK_ID SP01N500 Subsch. ID : 370 Det. descr. : SET BUILDING BLOCK IDENTIFIER	SC001500 80000000 <hex>	
		Verify Telemetry BBFULLTYPE SM2LN500	= Null	AND=ZAZ90999
4		Define HK Report		Next Step: 5
	ET=+ UT=+00.00.02	DEFINE_NEW_HK_REPORT DEFINE_NEW_HK_REPORT Command Parameter(s) : HKPCKTID_DEFINENEWHK SPR0N500 301 <hex> HKSID_DEFINENEWHK SPR1N500 301 <hex> HKINTERVAL_DEFINENEWHK SPR2N500 FA0 <hex> HKREPEAT_DEFINENEWHK SPR3N500 1 <hex> TABLEID_DEFINENEWHK SPR4N500 1 <hex> TC Control Flags : GBM IL DSE --Y -- --- Subsch. ID : 370 Det. descr. : DEFINE NEW HOUSEKEEPING PARAMETER REPORT	SCR00500 301 <hex> 301 <hex> FA0 <hex> 1 <hex> 1 <hex>	
4.1		TM Checks		<input type="checkbox"/>
		Verify Telemetry is incrementing at 4 second intervals TM2N SMT1N500		AND=SA_6_559
		Ensure TM is incrementing at 4 second intervals THSK SM00T500	any	AND=ZAZ90999
		Verify Telemetry MODE SM00M500	= REDY	(None)
5		Stop On-board Monitoring, Load FDIR Actions Table		Next Step: 6

Mode_Go2REDY
 File: H_COP_SPI_REDX.xls
 Author: L.Lucas-hp



Step No.	Time	Activity/Remarks	TC/TLM	Display/ Branch																																																																																																																																	
		<p style="text-align: right;">GBM IL DSE -----</p> <p>Subsch. ID : 370 Det. descr. : UPDATE CONTENTS OF A TABLE</p>																																																																																																																																			
	ET=+ UT=+00.00.01	<p>UPDATE_TABLE</p> <p style="text-align: right;">UPDATE_TABLE</p> <p>Command Parameter(s) :</p> <table border="0"> <tr><td>TABLEID_UPDTAB</td><td>SPB5N500</td><td>103 <hex></td></tr> <tr><td>INDEX_UPDTAB</td><td>SPB6N500</td><td>100 <hex></td></tr> <tr><td>N_UPDTAB</td><td>SPB7N500</td><td>38 <dec></td></tr> <tr><td>DATA_UPDTAB</td><td>SPB8N500</td><td>12000000 <hex></td></tr> <tr><td>DATA_UPDTAB</td><td>SPB8N500</td><td>3001 <hex></td></tr> <tr><td>DATA_UPDTAB</td><td>SPB8N500</td><td>53010000 <hex></td></tr> <tr><td>DATA_UPDTAB</td><td>SPB8N500</td><td>2000000 <hex></td></tr> <tr><td>DATA_UPDTAB</td><td>SPB8N500</td><td>7F000000 <hex></td></tr> <tr><td>DATA_UPDTAB</td><td>SPB8N500</td><td>12000000 <hex></td></tr> <tr><td>DATA_UPDTAB</td><td>SPB8N500</td><td>3002 <hex></td></tr> <tr><td>DATA_UPDTAB</td><td>SPB8N500</td><td>53010000 <hex></td></tr> <tr><td colspan="3"> </td></tr> <tr><td>DATA_UPDTAB</td><td>SPB8N500</td><td>2000000 <hex></td></tr> <tr><td>DATA_UPDTAB</td><td>SPB8N500</td><td>7F000000 <hex></td></tr> <tr><td>DATA_UPDTAB</td><td>SPB8N500</td><td>12000000 <hex></td></tr> <tr><td>DATA_UPDTAB</td><td>SPB8N500</td><td>3003 <hex></td></tr> <tr><td>DATA_UPDTAB</td><td>SPB8N500</td><td>53010000 <hex></td></tr> <tr><td>DATA_UPDTAB</td><td>SPB8N500</td><td>2000000 <hex></td></tr> <tr><td>DATA_UPDTAB</td><td>SPB8N500</td><td>7F000000 <hex></td></tr> <tr><td>DATA_UPDTAB</td><td>SPB8N500</td><td>12000000 <hex></td></tr> <tr><td>DATA_UPDTAB</td><td>SPB8N500</td><td>3004 <hex></td></tr> <tr><td>DATA_UPDTAB</td><td>SPB8N500</td><td>53010000 <hex></td></tr> <tr><td>DATA_UPDTAB</td><td>SPB8N500</td><td>2000000 <hex></td></tr> <tr><td>DATA_UPDTAB</td><td>SPB8N500</td><td>7F000000 <hex></td></tr> <tr><td>DATA_UPDTAB</td><td>SPB8N500</td><td>12000000 <hex></td></tr> <tr><td>DATA_UPDTAB</td><td>SPB8N500</td><td>3005 <hex></td></tr> <tr><td>DATA_UPDTAB</td><td>SPB8N500</td><td>53010000 <hex></td></tr> <tr><td colspan="3"> </td></tr> <tr><td>DATA_UPDTAB</td><td>SPB8N500</td><td>2000000 <hex></td></tr> <tr><td>DATA_UPDTAB</td><td>SPB8N500</td><td>7F000000 <hex></td></tr> <tr><td>DATA_UPDTAB</td><td>SPB8N500</td><td>12000000 <hex></td></tr> <tr><td>DATA_UPDTAB</td><td>SPB8N500</td><td>3006 <hex></td></tr> <tr><td>DATA_UPDTAB</td><td>SPB8N500</td><td>53010000 <hex></td></tr> <tr><td>DATA_UPDTAB</td><td>SPB8N500</td><td>2000000 <hex></td></tr> <tr><td>DATA_UPDTAB</td><td>SPB8N500</td><td>7F000000 <hex></td></tr> <tr><td>DATA_UPDTAB</td><td>SPB8N500</td><td>12000000 <hex></td></tr> <tr><td>DATA_UPDTAB</td><td>SPB8N500</td><td>3007 <hex></td></tr> <tr><td>DATA_UPDTAB</td><td>SPB8N500</td><td>53010000 <hex></td></tr> <tr><td>DATA_UPDTAB</td><td>SPB8N500</td><td>2000000 <hex></td></tr> <tr><td>DATA_UPDTAB</td><td>SPB8N500</td><td>7F000000 <hex></td></tr> <tr><td>DATA_UPDTAB</td><td>SPB8N500</td><td>12000000 <hex></td></tr> <tr><td>DATA_UPDTAB</td><td>SPB8N500</td><td>3008 <hex></td></tr> <tr><td>DATA_UPDTAB</td><td>SPB8N500</td><td>53010000 <hex></td></tr> </table>	TABLEID_UPDTAB	SPB5N500	103 <hex>	INDEX_UPDTAB	SPB6N500	100 <hex>	N_UPDTAB	SPB7N500	38 <dec>	DATA_UPDTAB	SPB8N500	12000000 <hex>	DATA_UPDTAB	SPB8N500	3001 <hex>	DATA_UPDTAB	SPB8N500	53010000 <hex>	DATA_UPDTAB	SPB8N500	2000000 <hex>	DATA_UPDTAB	SPB8N500	7F000000 <hex>	DATA_UPDTAB	SPB8N500	12000000 <hex>	DATA_UPDTAB	SPB8N500	3002 <hex>	DATA_UPDTAB	SPB8N500	53010000 <hex>				DATA_UPDTAB	SPB8N500	2000000 <hex>	DATA_UPDTAB	SPB8N500	7F000000 <hex>	DATA_UPDTAB	SPB8N500	12000000 <hex>	DATA_UPDTAB	SPB8N500	3003 <hex>	DATA_UPDTAB	SPB8N500	53010000 <hex>	DATA_UPDTAB	SPB8N500	2000000 <hex>	DATA_UPDTAB	SPB8N500	7F000000 <hex>	DATA_UPDTAB	SPB8N500	12000000 <hex>	DATA_UPDTAB	SPB8N500	3004 <hex>	DATA_UPDTAB	SPB8N500	53010000 <hex>	DATA_UPDTAB	SPB8N500	2000000 <hex>	DATA_UPDTAB	SPB8N500	7F000000 <hex>	DATA_UPDTAB	SPB8N500	12000000 <hex>	DATA_UPDTAB	SPB8N500	3005 <hex>	DATA_UPDTAB	SPB8N500	53010000 <hex>				DATA_UPDTAB	SPB8N500	2000000 <hex>	DATA_UPDTAB	SPB8N500	7F000000 <hex>	DATA_UPDTAB	SPB8N500	12000000 <hex>	DATA_UPDTAB	SPB8N500	3006 <hex>	DATA_UPDTAB	SPB8N500	53010000 <hex>	DATA_UPDTAB	SPB8N500	2000000 <hex>	DATA_UPDTAB	SPB8N500	7F000000 <hex>	DATA_UPDTAB	SPB8N500	12000000 <hex>	DATA_UPDTAB	SPB8N500	3007 <hex>	DATA_UPDTAB	SPB8N500	53010000 <hex>	DATA_UPDTAB	SPB8N500	2000000 <hex>	DATA_UPDTAB	SPB8N500	7F000000 <hex>	DATA_UPDTAB	SPB8N500	12000000 <hex>	DATA_UPDTAB	SPB8N500	3008 <hex>	DATA_UPDTAB	SPB8N500	53010000 <hex>	SCB02500	
TABLEID_UPDTAB	SPB5N500	103 <hex>																																																																																																																																			
INDEX_UPDTAB	SPB6N500	100 <hex>																																																																																																																																			
N_UPDTAB	SPB7N500	38 <dec>																																																																																																																																			
DATA_UPDTAB	SPB8N500	12000000 <hex>																																																																																																																																			
DATA_UPDTAB	SPB8N500	3001 <hex>																																																																																																																																			
DATA_UPDTAB	SPB8N500	53010000 <hex>																																																																																																																																			
DATA_UPDTAB	SPB8N500	2000000 <hex>																																																																																																																																			
DATA_UPDTAB	SPB8N500	7F000000 <hex>																																																																																																																																			
DATA_UPDTAB	SPB8N500	12000000 <hex>																																																																																																																																			
DATA_UPDTAB	SPB8N500	3002 <hex>																																																																																																																																			
DATA_UPDTAB	SPB8N500	53010000 <hex>																																																																																																																																			
DATA_UPDTAB	SPB8N500	2000000 <hex>																																																																																																																																			
DATA_UPDTAB	SPB8N500	7F000000 <hex>																																																																																																																																			
DATA_UPDTAB	SPB8N500	12000000 <hex>																																																																																																																																			
DATA_UPDTAB	SPB8N500	3003 <hex>																																																																																																																																			
DATA_UPDTAB	SPB8N500	53010000 <hex>																																																																																																																																			
DATA_UPDTAB	SPB8N500	2000000 <hex>																																																																																																																																			
DATA_UPDTAB	SPB8N500	7F000000 <hex>																																																																																																																																			
DATA_UPDTAB	SPB8N500	12000000 <hex>																																																																																																																																			
DATA_UPDTAB	SPB8N500	3004 <hex>																																																																																																																																			
DATA_UPDTAB	SPB8N500	53010000 <hex>																																																																																																																																			
DATA_UPDTAB	SPB8N500	2000000 <hex>																																																																																																																																			
DATA_UPDTAB	SPB8N500	7F000000 <hex>																																																																																																																																			
DATA_UPDTAB	SPB8N500	12000000 <hex>																																																																																																																																			
DATA_UPDTAB	SPB8N500	3005 <hex>																																																																																																																																			
DATA_UPDTAB	SPB8N500	53010000 <hex>																																																																																																																																			
DATA_UPDTAB	SPB8N500	2000000 <hex>																																																																																																																																			
DATA_UPDTAB	SPB8N500	7F000000 <hex>																																																																																																																																			
DATA_UPDTAB	SPB8N500	12000000 <hex>																																																																																																																																			
DATA_UPDTAB	SPB8N500	3006 <hex>																																																																																																																																			
DATA_UPDTAB	SPB8N500	53010000 <hex>																																																																																																																																			
DATA_UPDTAB	SPB8N500	2000000 <hex>																																																																																																																																			
DATA_UPDTAB	SPB8N500	7F000000 <hex>																																																																																																																																			
DATA_UPDTAB	SPB8N500	12000000 <hex>																																																																																																																																			
DATA_UPDTAB	SPB8N500	3007 <hex>																																																																																																																																			
DATA_UPDTAB	SPB8N500	53010000 <hex>																																																																																																																																			
DATA_UPDTAB	SPB8N500	2000000 <hex>																																																																																																																																			
DATA_UPDTAB	SPB8N500	7F000000 <hex>																																																																																																																																			
DATA_UPDTAB	SPB8N500	12000000 <hex>																																																																																																																																			
DATA_UPDTAB	SPB8N500	3008 <hex>																																																																																																																																			
DATA_UPDTAB	SPB8N500	53010000 <hex>																																																																																																																																			
		<p>TC Control Flags :</p> <p style="text-align: right;">GBM IL DSE -----</p> <p>Subsch. ID : 370 Det. descr. : UPDATE CONTENTS OF A TABLE</p>																																																																																																																																			

Mode_Go2REDY
 File: H_COP_SPI_REDX.xls
 Author: L.Lucas-hp



Step No.	Time	Activity/Remarks	TC/TLM	Display/ Branch
	ET=+ UT=+00.00.01	UPDATE_TABLE UPDATE_TABLE	SCB02500	
		Command Parameter(s) :		
		TABLEID_UPDTAB SPB5N500	103 <hex>	
		INDEX_UPDTAB SPB6N500	138 <hex>	
		N_UPDTAB SPB7N500	38 <dec>	
		DATA_UPDTAB SPB8N500	2000000 <hex>	
		DATA_UPDTAB SPB8N500	7F000000 <hex>	
		DATA_UPDTAB SPB8N500	12000000 <hex>	
		DATA_UPDTAB SPB8N500	3009 <hex>	
		DATA_UPDTAB SPB8N500	53010000 <hex>	
		DATA_UPDTAB SPB8N500	20000000 <hex>	
		DATA_UPDTAB SPB8N500	7F000000 <hex>	
		DATA_UPDTAB SPB8N500	12000000 <hex>	
		DATA_UPDTAB SPB8N500	300A <hex>	
		DATA_UPDTAB SPB8N500	53010000 <hex>	
		DATA_UPDTAB SPB8N500	20000000 <hex>	
		DATA_UPDTAB SPB8N500	7F000000 <hex>	
		DATA_UPDTAB SPB8N500	12000000 <hex>	
		DATA_UPDTAB SPB8N500	300B <hex>	
		DATA_UPDTAB SPB8N500	53010000 <hex>	
		DATA_UPDTAB SPB8N500	20000000 <hex>	
		DATA_UPDTAB SPB8N500	7F000000 <hex>	
		DATA_UPDTAB SPB8N500	12000000 <hex>	
		DATA_UPDTAB SPB8N500	300C <hex>	
		DATA_UPDTAB SPB8N500	53010000 <hex>	
		DATA_UPDTAB SPB8N500	20000000 <hex>	
		DATA_UPDTAB SPB8N500	7F000000 <hex>	
		DATA_UPDTAB SPB8N500	12000000 <hex>	
		DATA_UPDTAB SPB8N500	300D <hex>	
		DATA_UPDTAB SPB8N500	53010000 <hex>	
		DATA_UPDTAB SPB8N500	20000000 <hex>	
		DATA_UPDTAB SPB8N500	7F000000 <hex>	
		DATA_UPDTAB SPB8N500	12000000 <hex>	
		DATA_UPDTAB SPB8N500	300E <hex>	
		DATA_UPDTAB SPB8N500	53010000 <hex>	
		DATA_UPDTAB SPB8N500	20000000 <hex>	
		DATA_UPDTAB SPB8N500	7F000000 <hex>	
		DATA_UPDTAB SPB8N500	12000000 <hex>	
		DATA_UPDTAB SPB8N500	300F <hex>	
		DATA_UPDTAB SPB8N500	53010000 <hex>	
		DATA_UPDTAB SPB8N500	20000000 <hex>	
		DATA_UPDTAB SPB8N500	7F000000 <hex>	
		DATA_UPDTAB SPB8N500	12000000 <hex>	
		TC Control Flags :		
			GBM IL DSE	

		Subsch. ID : 370		
		Det. descr. : UPDATE CONTENTS OF A TABLE		

Mode_Go2REDY
 File: H_COP_SPI_REDX.xls
 Author: L.Lucas-hp



Step No.	Time	Activity/Remarks	TC/TLM	Display/ Branch
		Note that a TM(5,1) packet [New_Step_Report] is generated after each of the following SET_OBS_STEP telecommands		
	ET=+ UT=+00.00.00	SET_OBS_STEP Command Parameter(s) : OBSERVATION_STEP SP03N500 Subsch. ID : 370 Det. descr. : SET OBSERVATION STEP	SET_OBS_STEP SC003500 0 <hex>	
	ET=+ UT=+00.00.01	SET_BBID Command Parameter(s) : BUILDING_BLOCK_ID SP01N500 Subsch. ID : 370 Det. descr. : SET BUILDING BLOCK IDENTIFIER	SET_BBID SC001500 80000000 <hex>	
		Verify Telemetry BBFULLTYPE SM2LN500	= Null	AND=ZAZ90999
	ET=+ UT=+00.00.00	SET_OBS_STEP Command Parameter(s) : OBSERVATION_STEP SP03N500 Subsch. ID : 370 Det. descr. : SET OBSERVATION STEP	SET_OBS_STEP SC003500 0 <hex>	
	ET=+ UT=+00.00.01	SET_BBID Command Parameter(s) : BUILDING_BLOCK_ID SP01N500 Subsch. ID : 370 Det. descr. : SET BUILDING BLOCK IDENTIFIER	SET_BBID SC001500 80030001 <hex>	
		Verify Telemetry BBFULLTYPE SM2LN500	= EndObs	AND=ZAZ90999
	ET=+ UT=+00.00.00	SET_OBS_STEP Command Parameter(s) : OBSERVATION_STEP SP03N500 Subsch. ID : 370 Det. descr. : SET OBSERVATION STEP	SET_OBS_STEP SC003500 1 <hex>	

Mode_Go2REDY
 File: H_COP_SPI_REDX.xls
 Author: L.Lucas-hp



Step No.	Time	Activity/Remarks	TC/TLM	Display/ Branch
	ET=+ UT=+00.00.01	SET_OBSID Command Parameter(s) : OBSERVATION_ID Subsch. ID : 370 Det. descr. : SET OBSERVATION IDENTIFIER	SET_OBSID SC000500 SP00N500 00000000 <hex>	
		Verify Telemetry OBSID SM10N500	= 00000000 <hex>	AND=ZAZ90999
	ET=+ UT=+00.00.00	SET_OBS_STEP Command Parameter(s) : OBSERVATION_STEP Subsch. ID : 370 Det. descr. : SET OBSERVATION STEP	SET_OBS_STEP SC003500 SP03N500 0 <hex>	
	ET=+ UT=+00.00.01	SET_BBID Command Parameter(s) : BUILDING_BLOCK_ID Subsch. ID : 370 Det. descr. : SET BUILDING BLOCK IDENTIFIER	SET_BBID SC001500 SP01N500 80000000 <hex>	
		Verify Telemetry BBFULLTYPE SM2LN500	= Null	AND=ZAZ90999
End of Procedure				