

Mode_Go2BasicREDY
 File: H_COP_SPI_REDB.xls
 Author: L.Lucas-hp



Procedure Summary

Objectives

The purpose of this procedure is to put SPIRE in REDY Mode.
 To be used to put SPIRE in REDY mode after end of functional tests without enabling FDIR Actions.

Based on Procedure:
 Name:Mode_Go2BasicREDY
 Version number:1
 Generated:11/05/2009

Summary of Constraints

n/a

Spacecraft Configuration

Start of Procedure

End of Procedure

Mode: SPIRE REDY

Reference File(s)

Input Command Sequences

Output Command Sequences

HCSREDB

Referenced Displays

ANDs **GRDs** **SLDs**
 SA_7_559
 ZAZ90999
 SA_1_559

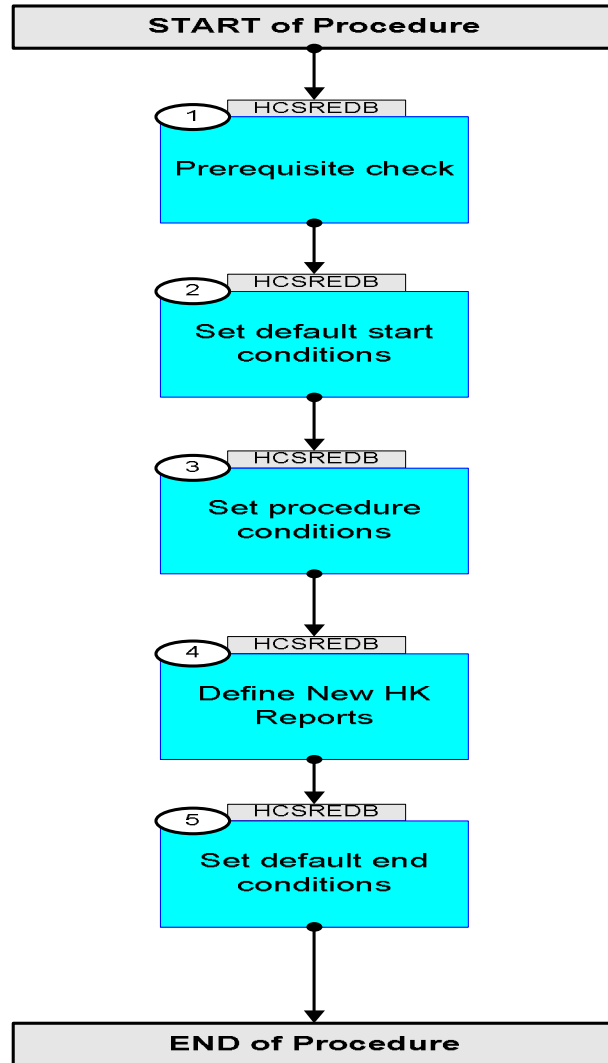
Configuration Control Information

DATE	FOP ISSUE	VERSION	MODIFICATION DESCRIPTION	AUTHOR	SPR REF
18/05/09		1	Created	L.Lucas-hp	
18/05/09	2.5	1.01	Validation : Refreshed flowchart	L.Lucas-hp	

Mode_Go2BasicREDY
File: H_COP_SPI_REDB.xls
Author: L.Lucas-hp



Procedure Flowchart Overview



Mode_Go2BasicREDY
 File: H_COP_SPI_REDB.xls
 Author: L.Lucas-hp



Step No.	Time	Activity/Remarks	TC/TLM	Display/ Branch
Beginning of Procedure				
TC Seq. Name :HCSREDB (SPIRE basicREDY Mode)				
TimeTag Type: N Sub Schedule ID: □				
1		Prerequisite check		Next Step: 2
1.1		HSC/ICC input		□
		Verify that the HSC has supplied a valid OBSID value: OBS_ID = 0xnnnn nnnn		
1.2		TM Checks		□
		Check Telemetry, for comparison later TM2N SMT1N500		AND=SA_7_559
		Check Telemetry, for comparison later THSK SM00T500		AND=SA_7_559
		Check telemetry, for comparison later MODE SM00M500		AND=SA_7_559
2		Set default start conditions		Next Step: 3
		Note that a TM(5,1) packet [New_Step_Report] is generated after each of the following SET_OBS_STEP telecommands		
	ET=+ UT=+00.00.00	SET_OBS_STEP Command Parameter(s) : OBSERVATION_STEP SP03N500 Subsch. ID : 370 Det. descr. : SET OBSERVATION STEP	SET_OBS_STEP SC003500 0 <hex>	
	ET=+ UT=+00.00.01	SET_BBID Command Parameter(s) : BUILDING_BLOCK_ID SP01N500 Subsch. ID : 370 Det. descr. : SET BUILDING BLOCK IDENTIFIER	SET_BBID SC001500 80010001 <hex>	

Mode_Go2BasicREDY
 File: H_COP_SPI_REDB.xls
 Author: L.Lucas-hp



Step No.	Time	Activity/Remarks	TC/TLM	Display/ Branch
		Verify Telemetry BBFULLTYPE SM2LN500	= ClearObs	AND=ZAZ90999
	ET=+ UT=+00.00.00	SET_OBS_STEP Command Parameter(s) : OBSERVATION_STEP SP03N500 Subsch. ID : 370 Det. descr. : SET OBSERVATION STEP	SC003500 1 <hex>	
	ET=+ UT=+00.00.01	SET_OBSID Command Parameter(s) : OBSERVATION_ID SP00N500 Subsch. ID : 370 Det. descr. : SET OBSERVATION IDENTIFIER	SC000500 00000000 <hex>	
		Verify Telemetry OBSID SM10N500	= 00000000 <hex>	AND=ZAZ90999
	ET=+ UT=+00.00.00	SET_OBS_STEP Command Parameter(s) : OBSERVATION_STEP SP03N500 Subsch. ID : 370 Det. descr. : SET OBSERVATION STEP	SC003500 0 <hex>	
	ET=+ UT=+00.00.01	SET_BBID Command Parameter(s) : BUILDING_BLOCK_ID SP01N500 Subsch. ID : 370 Det. descr. : SET BUILDING BLOCK IDENTIFIER	SC001500 80000000 <hex>	
		Verify Telemetry BBFULLTYPE SM2LN500	= Null	AND=ZAZ90999
	ET=+ UT=+00.00.00	SET_OBS_STEP Command Parameter(s) : OBSERVATION_STEP SP03N500 Subsch. ID : 370 Det. descr. : SET OBSERVATION STEP	SC003500 0 <hex>	

Mode_Go2BasicREDY
 File: H_COP_SPI_REDB.xls
 Author: L.Lucas-hp



Step No.	Time	Activity/Remarks	TC/TLM	Display/ Branch
	ET=+ UT=+00.00.01	SET_BBID Command Parameter(s) : BUILDING_BLOCK_ID Subsch. ID : 370 Det. descr. : SET BUILDING BLOCK IDENTIFIER	SET_BBID SP01N500 80020001 <hex>	SC001500
		Verify Telemetry BBFULLTYPE	SM2LN500	= StartObs AND=ZAZ90999
3		Set procedure conditions		Next Step: 4
	ET=+ UT=+00.00.00	RESET_DRCU_COUNTERS Subsch. ID : 370 Det. descr. : RESET DRCU COUNTERS	RESET_DRCU_COUNTERS	SCD00505
		Verify that the TRESET parameter has the same value as the THSK parameter TRESET	SM01T500	same as THSK AND=SA_1_559
		THSK	SM00T500	any AND=SA_1_559
		Note that a TM(5,1) packet [New_Step_Report] is generated after each of the following SET_OBS_STEP telecommands		
	ET=+ UT=+00.00.00	SET_OBS_STEP Command Parameter(s) : OBSERVATION_STEP Subsch. ID : 370 Det. descr. : SET OBSERVATION STEP	SET_OBS_STEP SP03N500 1 <hex>	SC003500
	ET=+ UT=+00.00.01	SET_OBSID Command Parameter(s) : OBSERVATION_ID Subsch. ID : 370 Det. descr. : SET OBSERVATION IDENTIFIER	SET_OBSID SP00N500 OBS_ID	SC000500
		Verify Telemetry OBSID	SM10N500	OBS_ID AND=ZAZ90999
	ET=+ UT=+00.00.00	SET_OBS_STEP Command Parameter(s) : OBSERVATION_STEP Subsch. ID : 370 Det. descr. : SET OBSERVATION STEP	SET_OBS_STEP SP03N500 0 <hex>	SC003500

Mode_Go2BasicREDY
 File: H_COP_SPI_REDB.xls
 Author: L.Lucas-hp



Step No.	Time	Activity/Remarks	TC/TLM	Display/ Branch
	ET=+ UT=+00.00.01	SET_BBID Command Parameter(s) : BUILDING_BLOCK_ID Subsch. ID : 370 Det. descr. : SET BUILDING BLOCK IDENTIFIER	SET_BBID SP01N500 80000000 <hex>	SC001500
		Verify Telemetry BBFULLTYPE	SM2LN500	= Null AND=ZAZ90999
4		Define New HK Reports		Next Step: 5
	ET=+ UT=+00.00.02	DEFINE_NEW_HK_REPORT Command Parameter(s) : HKPCKTID_DEFINENEWHK HKSID_DEFINENEWHK HKINTERVAL_DEFINENEWHK HKREPEAT_DEFINENEWHK TABLEID_DEFINENEWHK TC Control Flags : Subsch. ID : 370 Det. descr. : DEFINE NEW HOUSEKEEPING PARAMETER REPORT	DEFINENEWHK SPR0N500 SPR1N500 SPR2N500 SPR3N500 SPR4N500 GBM IL DSE --Y -- ---	SCR00500 301 <hex> 301 <hex> FA0 <hex> 1 <hex> 1 <hex>
		Check Telemetry is incrementing at 4 second intervals TM2N	SMT1N500	AND=SA_7_559
		Check Telemetry is incrementing at 4 second intervals THSK	SM00T500	AND=SA_7_559
	ET=+ UT=+00.00.00	Execute Telecommand Command Parameter(s) : OBSERVING_MODE TC Control Flags : Subsch. ID : 370 Det. descr. : SET OBSERVING MODE	SET_OBS_MODE SP02N500 200 <hex>	SC002500
		Verify Telemetry MODE	SM00M500	= REDY AND=SA_7_559
5		Set default end conditions		Next Step: END
		Note that a TM(5,1) packet [New_Step_Report] is generated after each of the following SET_OBS_STEP telecommands		

Mode_Go2BasicREDY
 File: H_COP_SPI_REDB.xls
 Author: L.Lucas-hp



Step No.	Time	Activity/Remarks	TC/TLM	Display/ Branch
	ET=+ UT=+00.00.00	SET_OBS_STEP SET_OBS_STEP Command Parameter(s) : OBSERVATION_STEP SP03N500 Subsch. ID : 370 Det. descr. : SET OBSERVATION STEP	SC003500 0 <hex>	
	ET=+ UT=+00.00.01	SET_BBID SET_BBID Command Parameter(s) : BUILDING_BLOCK_ID SP01N500 Subsch. ID : 370 Det. descr. : SET BUILDING BLOCK IDENTIFIER	SC001500 80030001 <hex>	
		Verify Telemetry BBFULLTYPE SM2LN500	= EndObs	AND=ZAZ90999
	ET=+ UT=+00.00.00	SET_OBS_STEP SET_OBS_STEP Command Parameter(s) : OBSERVATION_STEP SP03N500 Subsch. ID : 370 Det. descr. : SET OBSERVATION STEP	SC003500 1 <hex>	
	ET=+ UT=+00.00.01	SET_OBSID SET_OBSID Command Parameter(s) : OBSERVATION_ID SP00N500 Subsch. ID : 370 Det. descr. : SET OBSERVATION IDENTIFIER	SC000500 00000000 <hex>	
		Verify Telemetry OBSID SM10N500	= 00000000 <hex>	AND=ZAZ90999
	ET=+ UT=+00.00.00	SET_OBS_STEP SET_OBS_STEP Command Parameter(s) : OBSERVATION_STEP SP03N500 Subsch. ID : 370 Det. descr. : SET OBSERVATION STEP	SC003500 0 <hex>	
	ET=+ UT=+00.00.01	SET_BBID SET_BBID Command Parameter(s) : BUILDING_BLOCK_ID SP01N500 Subsch. ID : 370 Det. descr. : SET BUILDING BLOCK IDENTIFIER	SC001500 80000000 <hex>	

Mode_Go2BasicREDY
 File: H_COP_SPI_REDB.xls
 Author: L.Lucas-hp



Step No.	Time	Activity/Remarks	TC/TLM	Display/ Branch
		Verify Telemetry BBFULLTYPE SM2LN500	= Null	AND=ZAZ90999
End of Procedure				