

SPIRE\_SMEC\_INIT PRIME Mode Transition  
 File: H\_COP\_SPI\_MSIP.xls  
 Author: L.Lucas-hp



## Procedure Summary

### Objectives

This is a mode transition procedure. The purpose of this procedure is to initialise the SMEC (PRIME)  
 This procedure utilises TPFs.

Based on procedure:  
 Name:SMEC\_INIT  
 Version number:4  
 Generated:27/03/2009

### Summary of Constraints

n/a

### Spacecraft Configuration

**Start of Procedure**

Sub-Mode = SMEC\_ON

**End of Procedure**

Mode = SMEC\_INIT

### Reference File(s)

**Input Command Sequences**

**Output Command Sequences**

HCSMSIP  
 HCSMSIPA  
 HCSMSIPB  
 HCSMSIPC  
 HCSMSIPD  
 HCSMSIPQ

### Referenced Displays

ANDs	GRDs	SLDs
SA_6_559		
ZAZ90999		
SAS0_559		

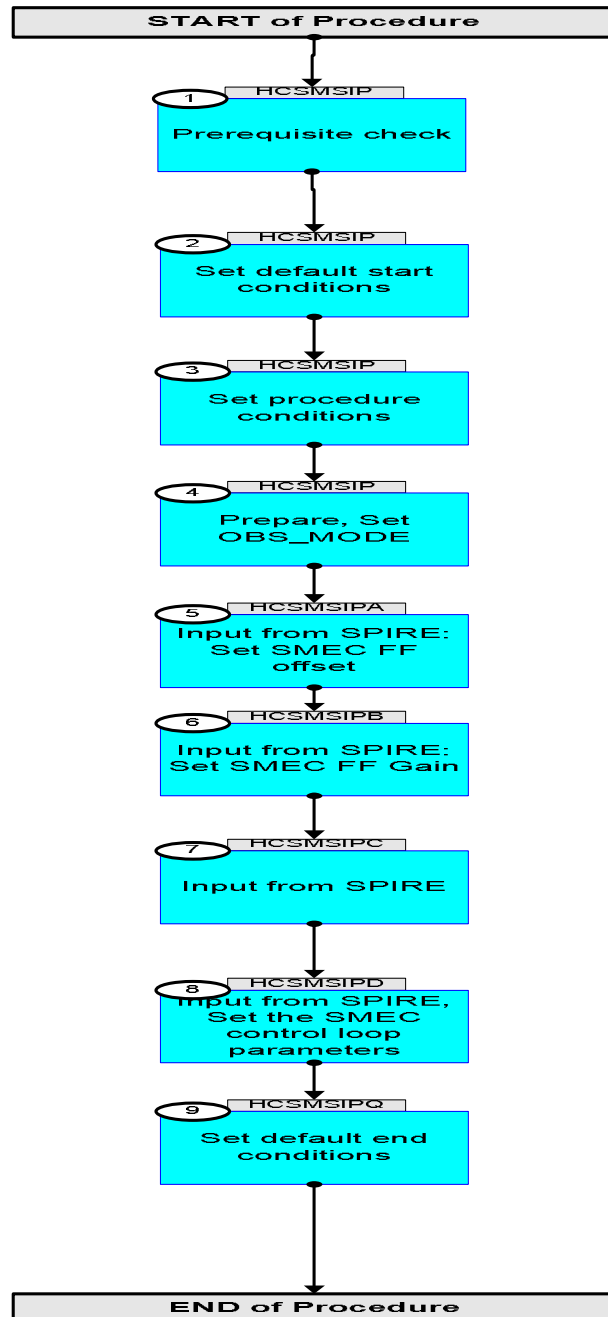
### Configuration Control Information

DATE	FOP ISSUE	VERSION	MODIFICATION DESCRIPTION	AUTHOR	SPR REF
19/04/09		1	Created	L.Lucas-hp	
22/04/09	2.3	2	Updated to enable two new TPFs and removed some paramters from previous TPF to implement comments from SPIRE	L.Lucas-hp	
04/05/09	2.4	3	Remove all Execution times from cmd properties	L.Lucas-hp	

SPIRE\_SMEC\_INIT PRIME Mode Transition  
File: H\_COP\_SPI\_MSIP.xls  
Author: L.Lucas-hp



### Procedure Flowchart Overview



SPIRE\_SMEC\_INIT PRIME Mode Transition  
 File: H\_COP\_SPI\_MSIP.xls  
 Author: L.Lucas-hp



Step No.	Time	Activity/Remarks	TC/TLM	Display/ Branch
<b>Beginning of Procedure</b>				
<i>TC Seq. Name : HCSMSIP (ModeTrans SMEC_INITP)</i>  <i>TimeTag Type: Y</i> <i>Sub Schedule ID:</i>  <input type="checkbox"/>				
1		<i>Prerequisite check</i>		Next Step: 2
1.1		<i>HSC/ICC input</i>		<input type="checkbox"/>
		Verify that the HSC has supplied a valid OBSID value:  <b>OBS_ID = 0xnnnn nnnn</b>		
1.2		<i>Verify TM</i>		<input type="checkbox"/>
		Verify Telemetry  <b>MODE SM00M500 = SMEC_ON</b>		AND=SA_6_559
2		<i>Set default start conditions</i>		Next Step: 3
		Note that a <b>TM(5,1)</b> packet [New_Step_Report] is generated after each of the following SET_OBS_STEP telecommands		
	ET=+ UT=+00.00.00	SET_OBS_STEP  <b>SET_OBS_STEP</b> <i>Command Parameter(s) :</i> <b>OBSERVATION_STEP SP03N500</b> <i>Subsch. ID : 370</i> <i>Det. descr. : SET OBSERVATION STEP</i>	SC003500  <b>0 &lt;hex&gt;</b>	
	ET=+ UT=+00.00.01	SET_BBID  <b>SET_BBID</b> <i>Command Parameter(s) :</i> <b>BUILDING_BLOCK_ID SP01N500</b> <i>Subsch. ID : 370</i> <i>Det. descr. : SET BUILDING BLOCK IDENTIFIER</i>	SC001500  <b>80010001 &lt;hex&gt;</b>	
		Verify Telemetry  <b>BBFULLTYPE SM2LN500 = ClearObs</b>		AND=ZAZ90999

SPIRE\_SMEC\_INIT PRIME Mode Transition  
 File: H\_COP\_SPI\_MSIP.xls  
 Author: L.Lucas-hp



Step No.	Time	Activity/Remarks	TC/TLM	Display/ Branch
	ET=+ UT=+00.00.00	SET_OBS_STEP  SET_OBS_STEP  Command Parameter(s) : OBSERVATION_STEP SP03N500  Subsch. ID : 370 Det. descr. : SET OBSERVATION STEP	SC003500  1 <hex>	
	ET=+ UT=+00.00.01	SET_OBSID  SET_OBSID  Command Parameter(s) : OBSERVATION_ID SP00N500  Subsch. ID : 370 Det. descr. : SET OBSERVATION IDENTIFIER	SC000500  00000000 <hex>	
		Verify Telemetry  OBSID SM10N500	= 00000000 <hex>	AND=ZAZ90999
	ET=+ UT=+00.00.00	SET_OBS_STEP  SET_OBS_STEP  Command Parameter(s) : OBSERVATION_STEP SP03N500  Subsch. ID : 370 Det. descr. : SET OBSERVATION STEP	SC003500  0 <hex>	
	ET=+ UT=+00.00.01	SET_BBID  SET_BBID  Command Parameter(s) : BUILDING_BLOCK_ID SP01N500  Subsch. ID : 370 Det. descr. : SET BUILDING BLOCK IDENTIFIER	SC001500  80000000 <hex>	
		Verify Telemetry  BBFULLTYPE SM2LN500	= Null	AND=ZAZ90999
	ET=+ UT=+00.00.00	SET_OBS_STEP  SET_OBS_STEP  Command Parameter(s) : OBSERVATION_STEP SP03N500  Subsch. ID : 370 Det. descr. : SET OBSERVATION STEP	SC003500  0 <hex>	
	ET=+ UT=+00.00.01	SET_BBID  SET_BBID  Command Parameter(s) : BUILDING_BLOCK_ID SP01N500  Subsch. ID : 370 Det. descr. : SET BUILDING BLOCK IDENTIFIER	SC001500  80020001 <hex>	

SPIRE\_SMEC\_INIT PRIME Mode Transition  
 File: H\_COP\_SPI\_MSIP.xls  
 Author: L.Lucas-hp



Step No.	Time	Activity/Remarks	TC/TLM	Display/ Branch
		Verify Telemetry <b>BBFULLTYPE</b> <b>SM2LN500</b>	= StartObs	AND=ZAZ90999
3		Set procedure conditions		Next Step: 4
	ET=+ UT=+00.00.00	RESET_DRCU_COUNTERS <b>RESET_DRCU_COUNTERS</b> Subsch. ID : 370 Det. descr. : RESET DRCU COUNTERS	SCD00505	
		Verify that the TRESET parameter has the same value as the THSK parameter <b>TRESET</b> <b>SM01T500</b>	same as THSK	AND=ZAZ90999
		<b>THSK</b> <b>SM00T500</b>	any	AND=ZAZ90999
		Note that a <b>TM(5,1)</b> packet [New_Step_Report] is generated after each of the following SET_OBS_STEP telecommands		
	ET=+ UT=+00.00.00	SET_OBS_STEP <b>SET_OBS_STEP</b> Command Parameter(s) : <b>OBSERVATION_STEP</b> <b>SP03N500</b> Subsch. ID : 370 Det. descr. : SET OBSERVATION STEP	SC003500  1 <hex>	
	ET=+ UT=+00.00.01	SET_OBSID <b>SET_OBSID</b> Command Parameter(s) : <b>OBSERVATION_ID</b> <b>SP00N500</b> Subsch. ID : 370 Det. descr. : SET OBSERVATION IDENTIFIER	SC000500  OBS_ID	
		Verify Telemetry <b>OBSID</b> <b>SM10N500</b>	OBS_ID	AND=ZAZ90999
	ET=+ UT=+00.00.00	SET_OBS_STEP <b>SET_OBS_STEP</b> Command Parameter(s) : <b>OBSERVATION_STEP</b> <b>SP03N500</b> Subsch. ID : 370 Det. descr. : SET OBSERVATION STEP	SC003500  0 <hex>	
	ET=+ UT=+00.00.01	SET_BBID <b>SET_BBID</b> Command Parameter(s) : <b>BUILDING_BLOCK_ID</b> <b>SP01N500</b> Subsch. ID : 370 Det. descr. : SET BUILDING BLOCK IDENTIFIER	SC001500  80000000 <hex>	

SPIRE\_SMEC\_INIT PRIME Mode Transition  
 File: H\_COP\_SPI\_MSIP.xls  
 Author: L.Lucas-hp



Step No.	Time	Activity/Remarks	TC/TLM	Display/ Branch
		Verify Telemetry <b>BBFULLTYPE</b> <b>SM2LN500</b>	= Null	AND=ZAZ90999
	ET=+ UT=+00.00.00	SET_OBS_STEP <b>SET_OBS_STEP</b> Command Parameter(s) : <b>OBSERVATION_STEP</b> <b>SP03N500</b> TC Control Flags : <b>GBM IL DSE</b> <b>--Y -- ---</b> Subsch. ID : 370 Det. descr. : SET OBSERVATION STEP	SC003500  0 <hex>	
	ET=+ UT=+00.00.01	SET_BBID <b>SET_BBID</b> Command Parameter(s) : <b>BUILDING_BLOCK_ID</b> <b>SP01N500</b> Subsch. ID : 370 Det. descr. : SET BUILDING BLOCK IDENTIFIER	SC001500  82000001 <hex>	
		Verify Telemetry <b>BBFULLTYPE</b> <b>SM2LN500</b>	= Initialise_FTS	AND=ZAZ90999
4		Prepare, Set OBS_MODE		Next Step: 5
	ET=+00.00.02 UT=+00.00.02	SET_OBS_MODE <b>SET_OBS_MODE</b> Command Parameter(s) : <b>OBSERVING_MODE</b> <b>SP02N500</b> TC Control Flags : <b>GBM IL DSE</b> <b>--Y -- ---</b> Subsch. ID : 370 Det. descr. : SET OBSERVING MODE	SC002500  205 <hex>	
TC Seq. Name :HCSMSIPA (MT SMEC_INITP A) Set SMEC FF offset  TimeTag Type: B Sub Schedule ID:  <input type="checkbox"/>				
5		Input from SPIRE: Set SMEC FF offset		Next Step: 6
		Check with the Instrument Team for the SMEC FF offset to use for the next SEND_DRCU_COMMAND TC		

SPIRE\_SMEC\_INIT PRIME Mode Transition  
 File: H\_COP\_SPI\_MSIP.xls  
 Author: L.Lucas-hp



Step No.	Time	Activity/Remarks	TC/TLM	Display/ Branch
	ET=+00.00.01 UT=+00.00.01	SEND_DRCU_COMMAND  SEND_DRCU_COMMAND  Command Parameter(s) : DRCUCOMMAND           SPD4N505 OVERRIDE       SPD9N505  TC Control Flags :  GBM IL DSE --Y -- ---  Subsch. ID : 370 Det. descr. : SEND A SINGLE COMMAND TO THE DRCU	SCD06505  1 0 <hex> (Def)	
		Verify Telemetry is the same as the commanded offset SMECFFOFFSET           SMS0A515	As commanded	AND=SAS0_559
		This sequence may need to be sent more than once		
<p>TC Seq. Name :HCSMSIPB (MT SMEC_INITP B)</p> <p>TimeTag Type: B Sub Schedule ID:</p> <p style="text-align: center;">□</p>				
6		Input from SPIRE: Set SMEC FF Gain		Next Step: 7
		Check with the Instrument Team for the SMEC FF gain to use for the next SEND_DRCU_COMMAND TC		
	ET=+00.00.15 UT=+00.00.15	SEND_DRCU_COMMAND  SEND_DRCU_COMMAND  Command Parameter(s) : DRCUCOMMAND           SPD4N505 OVERRIDE       SPD9N505  TC Control Flags :  GBM IL DSE --Y -- ---  Subsch. ID : 370 Det. descr. : SEND A SINGLE COMMAND TO THE DRCU	SCD06505  1 0 <hex> (Def)	
		Verify Telemetry is as commanded SMECFFGAIN           SMS5N515	As commanded	AND=SAS0_559
		This sequence may need to be sent more than once		
<p>TC Seq. Name :HCSMSIPC (MT SMEC_INITP C)</p> <p>TimeTag Type: Sub Schedule ID:</p> <p style="text-align: center;">□</p>				

SPIRE\_SMEC\_INIT PRIME Mode Transition  
 File: H\_COP\_SPI\_MSIP.xls  
 Author: L.Lucas-hp



Step No.	Time	Activity/Remarks	TC/TLM	Display/ Branch
7		Input from SPIRE		Next Step: 8
		This sequence may need to be sent more than once		
	ET=+00.00.00 UT=+00.00.00	SEND_DRCU_COMMAND  SEND_DRCU_COMMAND  Command Parameter(s) : DRCUCOMMAND                  SPD4N505 OVERRIDE                  SPD9N505  TC Control Flags :  GBM IL DSE --Y -- --  Subsch. ID : 370 Det. descr. : SEND A SINGLE COMMAND TO THE DRCU	SCD06505  90450000 <hex> 0 <hex> (Def)	
	ET=+00.00.01 UT=+00.00.01	SEND_DRCU_COMMAND  SEND_DRCU_COMMAND  Command Parameter(s) : DRCUCOMMAND                  SPD4N505 OVERRIDE                  SPD9N505  TC Control Flags :  GBM IL DSE --- -- --  Subsch. ID : 370 Det. descr. : SEND A SINGLE COMMAND TO THE DRCU	SCD06505  90460000 <hex> 0 <hex> (Def)	
	ET=+00.00.01 UT=+00.00.01	SEND_DRCU_COMMAND  SEND_DRCU_COMMAND  Command Parameter(s) : DRCUCOMMAND                  SPD4N505 OVERRIDE                  SPD9N505  TC Control Flags :  GBM IL DSE --- -- --  Subsch. ID : 370 Det. descr. : SEND A SINGLE COMMAND TO THE DRCU	SCD06505  90490001 <hex> 0 <hex> (Def)	
	ET=+00.00.10 UT=+00.00.10	SEND_DRCU_COMMAND  SEND_DRCU_COMMAND  Command Parameter(s) : DRCUCOMMAND                  SPD4N505 OVERRIDE                  SPD9N505  TC Control Flags :  GBM IL DSE --- -- --  Subsch. ID : 370 Det. descr. : SEND A SINGLE COMMAND TO THE DRCU	SCD06505  90490004 <hex> 0 <hex> (Def)	



SPIRE\_SMEC\_INIT PRIME Mode Transition  
 File: H\_COP\_SPI\_MSIP.xls  
 Author: L.Lucas-hp



Step No.	Time	Activity/Remarks	TC/TLM	Display/ Branch
	ET=+00.00.01 UT=+00.00.01	SEND_DRCU_COMMAND  SEND_DRCU_COMMAND  Command Parameter(s) : DRCUCOMMAND           SPD4N505 OVERRIDE           SPD9N505  TC Control Flags :  GBM IL DSE --- -- ---  Subsch. ID : 370 Det. descr. : SEND A SINGLE COMMAND TO THE DRCU	SCD06505  90490001 <hex> 0 <hex> (Def)	
TC Seq. Name : HCSMSIPD (MT SMEC_INITP D)				
TimeTag Type: B Sub Schedule ID:  <input type="checkbox"/>				
8		Input from SPIRE, Set the SMEC control loop parameters		Next Step: 9
8.1		The next set of SEND_DRCU_COMMAND TCs set the SMEC control loop parameters		<input type="checkbox"/>
		A TPF should be used to populate the parameters of the following SEND_DRCU_COMMAND TCs within this sequence.		
		Set the SMEC LVDT scale factor		
	ET=+00.00.01 UT=+00.00.01	SEND_DRCU_COMMAND  SEND_DRCU_COMMAND  Command Parameter(s) : DRCUCOMMAND           SPD4N505 OVERRIDE           SPD9N505  TC Control Flags :  GBM IL DSE --Y -- ---  Subsch. ID : 370 Det. descr. : SEND A SINGLE COMMAND TO THE DRCU	SCD06505  LVDTscal 0 <hex> (Def)	
		Set the SMEC slew rate limiter		

SPIRE\_SMEC\_INIT PRIME Mode Transition  
 File: H\_COP\_SPI\_MSIP.xls  
 Author: L.Lucas-hp



Step No.	Time	Activity/Remarks	TC/TLM	Display/ Branch
	ET=+00.00.02 UT=+00.00.02	SEND_DRCU_COMMAND  SEND_DRCU_COMMAND  Command Parameter(s) : DRCUCOMMAND                  SPD4N505 OVERRIDE                                  SPD9N505  TC Control Flags :  GBM IL DSE --- -- ---  Subsch. ID : 370 Det. descr. : SEND A SINGLE COMMAND TO THE DRCU	SCD06505  SlewLim 0 <hex> (Def)	
		Set the SMEC integration limit		
	ET=+00.00.01 UT=+00.00.01	SEND_DRCU_COMMAND  SEND_DRCU_COMMAND  Command Parameter(s) : DRCUCOMMAND                  SPD4N505 OVERRIDE                                  SPD9N505  TC Control Flags :  GBM IL DSE --- -- ---  Subsch. ID : 370 Det. descr. : SEND A SINGLE COMMAND TO THE DRCU	SCD06505  IntegLim 0 <hex> (Def)	
		Set the SMEC derivative filter		
	ET=+00.00.01 UT=+00.00.01	SEND_DRCU_COMMAND  SEND_DRCU_COMMAND  Command Parameter(s) : DRCUCOMMAND                  SPD4N505 OVERRIDE                                  SPD9N505  TC Control Flags :  GBM IL DSE --- -- ---  Subsch. ID : 370 Det. descr. : SEND A SINGLE COMMAND TO THE DRCU	SCD06505  DerivFil 0 <hex> (Def)	
		Set the SMEC Kd		
	ET=+00.00.01 UT=+00.00.01	SEND_DRCU_COMMAND  SEND_DRCU_COMMAND  Command Parameter(s) : DRCUCOMMAND                  SPD4N505 OVERRIDE                                  SPD9N505  TC Control Flags :  GBM IL DSE --- -- ---  Subsch. ID : 370 Det. descr. : SEND A SINGLE COMMAND TO THE DRCU	SCD06505  Kd 0 <hex> (Def)	
		Close the SMEC loop on the encoders		

SPIRE\_SMEC\_INIT PRIME Mode Transition  
 File: H\_COP\_SPI\_MSIP.xls  
 Author: L.Lucas-hp



Step No.	Time	Activity/Remarks	TC/TLM	Display/ Branch
	ET=+00.00.01 UT=+00.00.01	SEND_DRCU_COMMAND  SEND_DRCU_COMMAND  Command Parameter(s) : DRCUCOMMAND                   SPD4N505 OVERRIDE                   SPD9N505  TC Control Flags :  GBM IL DSE --Y -- --  Subsch. ID : 370 Det. descr. : SEND A SINGLE COMMAND TO THE DRCU	SCD06505  90440001 <hex> 0 <hex> (Def)	
	ET=+00.00.02 UT=+00.00.02	SEND_DRCU_COMMAND  SEND_DRCU_COMMAND  Command Parameter(s) : DRCUCOMMAND                   SPD4N505 OVERRIDE                   SPD9N505  TC Control Flags :  GBM IL DSE --- -- --  Subsch. ID : 370 Det. descr. : SEND A SINGLE COMMAND TO THE DRCU	SCD06505  904503e8 <hex> 0 <hex> (Def)	
		Set the SMEC Kp and Ki		
	ET=+00.00.05 UT=+00.00.05	SEND_DRCU_COMMAND  SEND_DRCU_COMMAND  Command Parameter(s) : DRCUCOMMAND                   SPD4N505 OVERRIDE                   SPD9N505  TC Control Flags :  GBM IL DSE --- -- --  Subsch. ID : 370 Det. descr. : SEND A SINGLE COMMAND TO THE DRCU	SCD06505  Kp 0 <hex> (Def)	
	ET=+00.00.00 UT=+00.00.00	SEND_DRCU_COMMAND  SEND_DRCU_COMMAND  Command Parameter(s) : DRCUCOMMAND                   SPD4N505 OVERRIDE                   SPD9N505  TC Control Flags :  GBM IL DSE --- -- --  Subsch. ID : 370 Det. descr. : SEND A SINGLE COMMAND TO THE DRCU	SCD06505  Ki 0 <hex> (Def)	

SPIRE\_SMEC\_INIT PRIME Mode Transition  
 File: H\_COP\_SPI\_MSIP.xls  
 Author: L.Lucas-hp



Step No.	Time	Activity/Remarks	TC/TLM	Display/ Branch
	ET=+00.00.01 UT=+00.00.01	SET_OBS_STEP  SET_OBS_STEP  Command Parameter(s) : OBSERVATION_STEP SP03N500  TC Control Flags :  GBM IL DSE --- --  Subsch. ID : 370 Det. descr. : SET OBSERVATION STEP	SC003500  0 <hex>	
	ET=+00.00.00 UT=+00.00.00	SET_BBID  SET_BBID  Command Parameter(s) : BUILDING_BLOCK_ID SP01N500  TC Control Flags :  GBM IL DSE --- --  Subsch. ID : 370 Det. descr. : SET BUILDING BLOCK IDENTIFIER	SC001500  80000000 <hex>	
	ET=+00.00.01 UT=+00.00.01	SET_OBS_STEP  SET_OBS_STEP  Command Parameter(s) : OBSERVATION_STEP SP03N500  TC Control Flags :  GBM IL DSE --- --  Subsch. ID : 370 Det. descr. : SET OBSERVATION STEP	SC003500  0 <hex>	
	ET=+00.00.00 UT=+00.00.00	SET_BBID  SET_BBID  Command Parameter(s) : BUILDING_BLOCK_ID SP01N500  TC Control Flags :  GBM IL DSE --- --  Subsch. ID : 370 Det. descr. : SET BUILDING BLOCK IDENTIFIER	SC001500  89090001 <hex>	
	ET=+00.00.02 UT=+00.00.02	SEND_DRCU_COMMAND  SEND_DRCU_COMMAND  Command Parameter(s) : DRCUCOMMAND SPD4N505 OVERRIDE SPD9N505  TC Control Flags :  GBM IL DSE --- --  Subsch. ID : 370 Det. descr. : SEND A SINGLE COMMAND TO THE DRCU	SCD06505  91c20000 <hex> 0 <hex> (Def)	

SPIRE\_SMEC\_INIT PRIME Mode Transition  
 File: H\_COP\_SPI\_MSIP.xls  
 Author: L.Lucas-hp



Step No.	Time	Activity/Remarks	TC/TLM	Display/ Branch
	ET=+00.00.00 UT=+00.00.00	SEND_DRCU_COMMAND  SEND_DRCU_COMMAND  Command Parameter(s) : DRCUCOMMAND                   SPD4N505 OVERRIDE                   SPD9N505  TC Control Flags :  GBM IL DSE --- -- ---  Subsch. ID : 370 Det. descr. : SEND A SINGLE COMMAND TO THE DRCU	SCD06505  91c00000 <hex> 0 <hex> (Def)	
	ET=+00.00.01 UT=+00.00.01	SEND_DRCU_COMMAND  SEND_DRCU_COMMAND  Command Parameter(s) : DRCUCOMMAND                   SPD4N505 OVERRIDE                   SPD9N505  TC Control Flags :  GBM IL DSE --- -- ---  Subsch. ID : 370 Det. descr. : SEND A SINGLE COMMAND TO THE DRCU	SCD06505  91c40000 <hex> 0 <hex> (Def)	
	ET=+00.00.00 UT=+00.00.00	SEND_DRCU_COMMAND  SEND_DRCU_COMMAND  Command Parameter(s) : DRCUCOMMAND                   SPD4N505 OVERRIDE                   SPD9N505  TC Control Flags :  GBM IL DSE --- -- ---  Subsch. ID : 370 Det. descr. : SEND A SINGLE COMMAND TO THE DRCU	SCD06505  91c50000 <hex> 0 <hex> (Def)	
	ET=+00.00.01 UT=+00.00.01	SEND_DRCU_COMMAND  SEND_DRCU_COMMAND  Command Parameter(s) : DRCUCOMMAND                   SPD4N505 OVERRIDE                   SPD9N505  TC Control Flags :  GBM IL DSE --- -- ---  Subsch. ID : 370 Det. descr. : SEND A SINGLE COMMAND TO THE DRCU	SCD06505  91c0000a <hex> 0 <hex> (Def)	

SPIRE\_SMEC\_INIT PRIME Mode Transition  
 File: H\_COP\_SPI\_MSIP.xls  
 Author: L.Lucas-hp



Step No.	Time	Activity/Remarks	TC/TLM	Display/ Branch
	ET=+00.00.00 UT=+00.00.00	SEND_DRCU_COMMAND  SEND_DRCU_COMMAND  Command Parameter(s) : DRCUCOMMAND                   SPD4N505 OVERRIDE                   SPD9N505  TC Control Flags :  GBM IL DSE --- -- --  Subsch. ID : 370 Det. descr. : SEND A SINGLE COMMAND TO THE DRCU	SCD06505  91c3ffff <hex> 0 <hex> (Def)	
	ET=+00.00.01 UT=+00.00.01	SET_OBS_STEP  SET_OBS_STEP  Command Parameter(s) : OBSERVATION_STEP                   SP03N500  TC Control Flags :  GBM IL DSE --- -- --  Subsch. ID : 370 Det. descr. : SET OBSERVATION STEP	SC003500  0 <hex>	
	ET=+00.00.00 UT=+00.00.00	SET_BBID  SET_BBID  Command Parameter(s) : BUILDING_BLOCK_ID                   SP01N500  TC Control Flags :  GBM IL DSE --- -- --  Subsch. ID : 370 Det. descr. : SET BUILDING BLOCK IDENTIFIER	SC001500  80000000 <hex>	
8.2		TM Check		<input type="checkbox"/>
		Verify Telemetry  MODE                   SM00M500	= SMEC_INIT	AND=SA_6_559
TC Seq. Name :HCSMSIPQ (MT SMEC_INITP Q)				
TimeTag Type: Sub Schedule ID:  <input type="checkbox"/>				
9		Set default end conditions		Next Step: END
		Note that a <b>TM(5,1)</b> packet [New_Step_Report] is generated after each of the following SET_OBS_STEP telecommands		

SPIRE\_SMEC\_INIT PRIME Mode Transition  
 File: H\_COP\_SPI\_MSIP.xls  
 Author: L.Lucas-hp



Step No.	Time	Activity/Remarks	TC/TLM	Display/ Branch
	ET=+ UT=+00.00.00	SET_OBS_STEP  SET_OBS_STEP  Command Parameter(s) : OBSERVATION_STEP SP03N500  Subsch. ID : 370 Det. descr. : SET OBSERVATION STEP	SC003500  0 <hex>	
	ET=+ UT=+00.00.01	SET_BBID  SET_BBID  Command Parameter(s) : BUILDING_BLOCK_ID SP01N500  Subsch. ID : 370 Det. descr. : SET BUILDING BLOCK IDENTIFIER	SC001500  80000000 <hex>	
		Verify Telemetry  BBFULLTYPE SM2LN500	= Null	AND=ZAZ90999
	ET=+ UT=+00.00.00	SET_OBS_STEP  SET_OBS_STEP  Command Parameter(s) : OBSERVATION_STEP SP03N500  Subsch. ID : 370 Det. descr. : SET OBSERVATION STEP	SC003500  0 <hex>	
	ET=+ UT=+00.00.01	SET_BBID  SET_BBID  Command Parameter(s) : BUILDING_BLOCK_ID SP01N500  Subsch. ID : 370 Det. descr. : SET BUILDING BLOCK IDENTIFIER	SC001500  80030001 <hex>	
		Verify Telemetry  BBFULLTYPE SM2LN500	= EndObs	AND=ZAZ90999
	ET=+ UT=+00.00.00	SET_OBS_STEP  SET_OBS_STEP  Command Parameter(s) : OBSERVATION_STEP SP03N500  Subsch. ID : 370 Det. descr. : SET OBSERVATION STEP	SC003500  1 <hex>	
	ET=+ UT=+00.00.01	SET_OBSID  SET_OBSID  Command Parameter(s) : OBSERVATION_ID SP00N500  Subsch. ID : 370 Det. descr. : SET OBSERVATION IDENTIFIER	SC000500  00000000 <hex>	

SPIRE\_SMEC\_INIT PRIME Mode Transition  
 File: H\_COP\_SPI\_MSIP.xls  
 Author: L.Lucas-hp



Step No.	Time	Activity/Remarks	TC/TLM	Display/ Branch
		Verify Telemetry <b>OBSID</b> <b>SM10N500</b>	= 00000000 <hex>	AND=ZAZ90999
	ET=+ UT=+00.00.00	SET_OBS_STEP <b>SET_OBS_STEP</b> Command Parameter(s) : <b>OBSERVATION_STEP</b> <b>SP03N500</b> Subsch. ID : 370 Det. descr. : SET OBSERVATION STEP	SC003500  0 <hex>	
	ET=+ UT=+00.00.01	SET_BBID <b>SET_BBID</b> Command Parameter(s) : <b>BUILDING_BLOCK_ID</b> <b>SP01N500</b> Subsch. ID : 370 Det. descr. : SET BUILDING BLOCK IDENTIFIER	SC001500  80000000 <hex>	
		Verify Telemetry <b>BBFULLTYPE</b> <b>SM2LN500</b>	= Null	AND=ZAZ90999

**End of Procedure**