

Mode\_DcuFunc13\_Phot BDA Integrity Check  
 File: H\_COP\_SPI\_DPIC.xls  
 Author: L.Lucas-hp



## Procedure Summary

### Objectives

The purpose of this procedure is Photometer BDAs Integrity Check based on Procedure: Mode\_DcuFunc13\_Phot (v6)

### Summary of Constraints

Procedure DCU-11-PHOT has been successfully executed. Photometer LIAs and detectors switched on.

### Spacecraft Configuration

#### Start of Procedure

Mode: PHOTSTBY

#### End of Procedure

Mode:PHOTSTBY

### Reference File(s)

#### Input Command Sequences

#### Output Command Sequences

HCSDPIC

### Referenced Displays

<b>ANDs</b>	<b>GRDs</b>	<b>SLDs</b>
SA_6_559		
ZAZ90999		
SA_1_559		

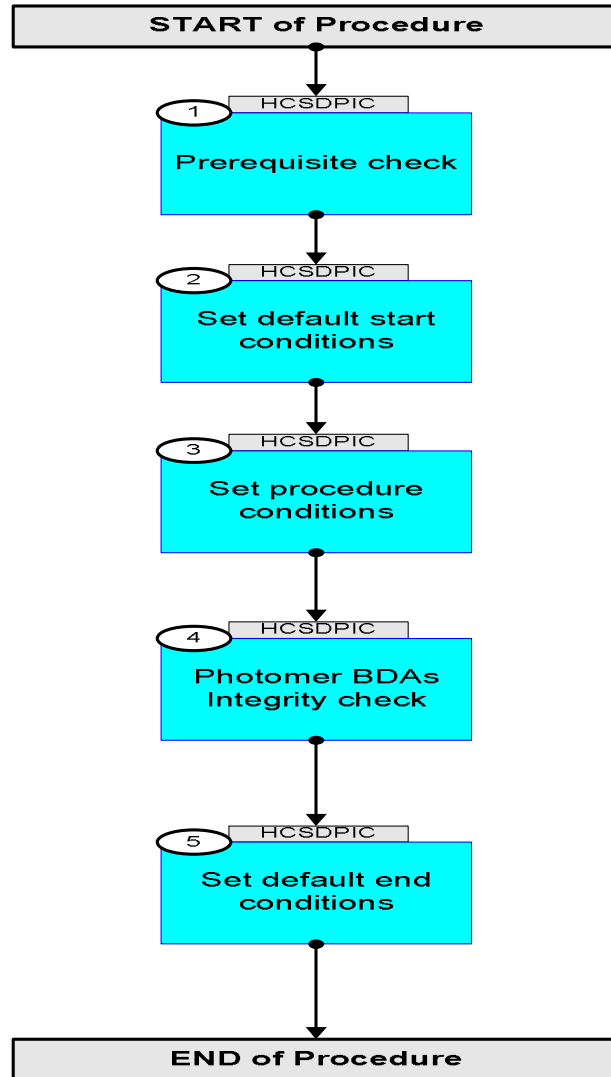
### Configuration Control Information

DATE	FOP ISSUE	VERSION	MODIFICATION DESCRIPTION	AUTHOR	SPR REF
22/12/08		1	Created	L.Lucas-hp	
14/01/09		1.01	Validation : Update AND	L.Lucas-hp	
27/01/09	2	2	Remove ETs for ease of Loading to manual stack	L.Lucas-hp	
23/03/09	2.2	2.01	Validation : Title Updates	L.Lucas-hp	

Mode\_DcuFunc13\_Phot BDA Integrity Check  
File: H\_COP\_SPI\_DPIC.xls  
Author: L.Lucas-hp



## Procedure Flowchart Overview





Mode\_DcuFunc13\_Phot BDA Integrity Check  
 File: H\_COP\_SPI\_DPIC.xls  
 Author: L.Lucas-hp



Step No.	Time	Activity/Remarks	TC/TLM	Display/ Branch	AIT Comment
	ET=+ UT=+00.00.00	SET_OBS_STEP  Command Parameter(s) : OBSERVATION_STEP SP03N500  Subsch. ID : 370 Det. descr. : SET OBSERVATION STEP	SET_OBS_STEP  SC003500  1 <hex>	TC	
	ET=+ UT=+00.00.01	SET_OBSID  Command Parameter(s) : OBSERVATION_ID SP00N500  Subsch. ID : 370 Det. descr. : SET OBSERVATION IDENTIFIER	SET_OBSID  SC000500  00000000 <hex>	TC	
		Verify Telemetry  OBSID SM10N500	= 00000000 <hex>	AND=ZAZ90999	
	ET=+ UT=+00.00.00	SET_OBS_STEP  Command Parameter(s) : OBSERVATION_STEP SP03N500  Subsch. ID : 370 Det. descr. : SET OBSERVATION STEP	SET_OBS_STEP  SC003500  0 <hex>	TC	
	ET=+ UT=+00.00.01	SET_BBID  Command Parameter(s) : BUILDING_BLOCK_ID SP01N500  Subsch. ID : 370 Det. descr. : SET BUILDING BLOCK IDENTIFIER	SET_BBID  SC001500  80000000 <hex>	TC	
		Verify Telemetry  BBFULLTYPE SM2LN500	= Null	AND=ZAZ90999	
	ET=+ UT=+00.00.00	SET_OBS_STEP  Command Parameter(s) : OBSERVATION_STEP SP03N500  Subsch. ID : 370 Det. descr. : SET OBSERVATION STEP	SET_OBS_STEP  SC003500  0 <hex>	TC	
	ET=+ UT=+00.00.01	SET_BBID  Command Parameter(s) : BUILDING_BLOCK_ID SP01N500  Subsch. ID : 370 Det. descr. : SET BUILDING BLOCK IDENTIFIER	SET_BBID  SC001500  80020001 <hex>	TC	
		Verify Telemetry  BBFULLTYPE SM2LN500	= StartObs	AND=SA_6_559	
3		Set procedure conditions		Next Step: 4	
	ET=+ UT=+00.00.00	RESET_DRCU_COUNTERS  Subsch. ID : 370 Det. descr. : RESET DRCU COUNTERS	RESET_DRCU_COUNTERS  SCD00505	TC	



Mode\_DcuFunc13\_Phot BDA Integrity Check  
 File: H\_COP\_SPI\_DPIC.xls  
 Author: L.Lucas-hp



Step No.	Time	Activity/Remarks	TC/TLM	Display/ Branch	AIT Comment
4		Photomer BDAs Integrity check		Next Step: 5	
	ET=+ UT=+00.00.02	SET_OBS_STEP  Command Parameter(s) : OBSERVATION_STEP           SP03N500  TC Control Flags :  GBM IL DSE --Y -- ---  Subsch. ID : 370 Det. descr. : SET OBSERVATION STEP	SC003500  1 <hex>	TC	
	ET=+ UT=+00.00.01	SEND_DRCU_COMMAND  Command Parameter(s) : DRCUCOMMAND           SPD4N505 OVERRIDE                SPD9N505  TC Control Flags :  GBM IL DSE --Y -- ---  Subsch. ID : 370 Det. descr. : SEND A SINGLE COMMAND TO THE DRCU	SCD06505  840000FF <hex> 0 <hex> (Def)	TC	
	ET=+ UT=+00.00.01	SEND_DRCU_COMMAND  Command Parameter(s) : DRCUCOMMAND           SPD4N505 OVERRIDE                SPD9N505  TC Control Flags :  GBM IL DSE --- -- ---  Subsch. ID : 370 Det. descr. : SEND A SINGLE COMMAND TO THE DRCU	SCD06505  843c0000 <hex> 0 <hex> (Def)	TC	
	ET=+ UT=+00.00.01	SEND_DRCU_COMMAND  Command Parameter(s) : DRCUCOMMAND           SPD4N505 OVERRIDE                SPD9N505  TC Control Flags :  GBM IL DSE --- -- ---  Subsch. ID : 370 Det. descr. : SEND A SINGLE COMMAND TO THE DRCU	SCD06505  843d0000 <hex> 0 <hex> (Def)	TC	
	ET=+ UT=+00.00.01	SEND_DRCU_COMMAND  Command Parameter(s) : DRCUCOMMAND           SPD4N505 OVERRIDE                SPD9N505  TC Control Flags :  GBM IL DSE --- -- ---  Subsch. ID : 370 Det. descr. : SEND A SINGLE COMMAND TO THE DRCU	SCD06505  84190095 <hex> 0 <hex> (Def)	TC	

Mode\_DcuFunc13\_Phot BDA Integrity Check  
 File: H\_COP\_SPI\_DPIC.xls  
 Author: L.Lucas-hp



Step No.	Time	Activity/Remarks	TC/TLM	Display/ Branch	AIT Comment
	ET=+ UT=+00.00.01	SEND_DRCU_COMMAND  SEND_DRCU_COMMAND  Command Parameter(s) : DRCUCOMMAND           SPD4N505 OVERRIDE        SPD9N505  TC Control Flags :  GBM IL DSE --- -- ---  Subsch. ID : 370 Det. descr. : SEND A SINGLE COMMAND TO THE DRCU	SCD06505	TC	
	ET=+ UT=+00.00.01	SEND_DRCU_COMMAND  SEND_DRCU_COMMAND  Command Parameter(s) : DRCUCOMMAND           SPD4N505 OVERRIDE        SPD9N505  TC Control Flags :  GBM IL DSE --- -- ---  Subsch. ID : 370 Det. descr. : SEND A SINGLE COMMAND TO THE DRCU	SCD06505	TC	
	ET=+ UT=+00.00.01	SEND_DRCU_COMMAND  SEND_DRCU_COMMAND  Command Parameter(s) : DRCUCOMMAND           SPD4N505 OVERRIDE        SPD9N505  TC Control Flags :  GBM IL DSE --- -- ---  Subsch. ID : 370 Det. descr. : SEND A SINGLE COMMAND TO THE DRCU	SCD06505	TC	
	ET=+ UT=+00.00.01	SEND_DRCU_COMMAND  SEND_DRCU_COMMAND  Command Parameter(s) : DRCUCOMMAND           SPD4N505 OVERRIDE        SPD9N505  TC Control Flags :  GBM IL DSE --- -- ---  Subsch. ID : 370 Det. descr. : SEND A SINGLE COMMAND TO THE DRCU	SCD06505	TC	
	ET=+ UT=+00.00.01	SEND_DRCU_COMMAND  SEND_DRCU_COMMAND  Command Parameter(s) : DRCUCOMMAND           SPD4N505 OVERRIDE        SPD9N505  TC Control Flags :  GBM IL DSE --- -- ---  Subsch. ID : 370 Det. descr. : SEND A SINGLE COMMAND TO THE DRCU	SCD06505	TC	

Mode\_DcuFunc13\_Phot BDA Integrity Check  
 File: H\_COP\_SPI\_DPIC.xls  
 Author: L.Lucas-hp



Step No.	Time	Activity/Remarks	TC/TLM	Display/ Branch	AIT Comment
	ET=+ UT=+00.00.01	SEND_DRCU_COMMAND  SEND_DRCU_COMMAND  Command Parameter(s) : DRCUCOMMAND           SPD4N505 OVERRIDE        SPD9N505  TC Control Flags :  GBM IL DSE --- -- ---  Subsch. ID : 370 Det. descr. : SEND A SINGLE COMMAND TO THE DRCU	SCD06505  841b0080 <hex> 0 <hex> (Def)	TC	
	ET=+ UT=+00.00.01	SEND_DRCU_COMMAND  SEND_DRCU_COMMAND  Command Parameter(s) : DRCUCOMMAND           SPD4N505 OVERRIDE        SPD9N505  TC Control Flags :  GBM IL DSE --- -- ---  Subsch. ID : 370 Det. descr. : SEND A SINGLE COMMAND TO THE DRCU	SCD06505  841c0080 <hex> 0 <hex> (Def)	TC	
	ET=+ UT=+00.00.01	SEND_DRCU_COMMAND  SEND_DRCU_COMMAND  Command Parameter(s) : DRCUCOMMAND           SPD4N505 OVERRIDE        SPD9N505  TC Control Flags :  GBM IL DSE --- -- ---  Subsch. ID : 370 Det. descr. : SEND A SINGLE COMMAND TO THE DRCU	SCD06505  84040000 <hex> 0 <hex> (Def)	TC	
	ET=+ UT=+00.00.01	SEND_DRCU_COMMAND  SEND_DRCU_COMMAND  Command Parameter(s) : DRCUCOMMAND           SPD4N505 OVERRIDE        SPD9N505  TC Control Flags :  GBM IL DSE --- -- ---  Subsch. ID : 370 Det. descr. : SEND A SINGLE COMMAND TO THE DRCU	SCD06505  841d0080 <hex> 0 <hex> (Def)	TC	
	ET=+ UT=+00.00.01	SET_OBS_STEP  SET_OBS_STEP  Command Parameter(s) : OBSERVATION_STEP        SP03N500  TC Control Flags :  GBM IL DSE --- -- ---  Subsch. ID : 370 Det. descr. : SET OBSERVATION STEP	SC003500  0 <hex>	TC	
	ET=+ UT=+00.00.00	SET_BBID  SET_BBID  Command Parameter(s) : BUILDING_BLOCK_ID        SP01N500  TC Control Flags :  GBM IL DSE --- -- ---  Subsch. ID : 370 Det. descr. : SET BUILDING BLOCK IDENTIFIER	SC001500  80000000 <hex>	TC	



Mode\_DcuFunc13\_Phot BDA Integrity Check  
 File: H\_COP\_SPI\_DPIC.xls  
 Author: L.Lucas-hp



Step No.	Time	Activity/Remarks	TC/TLM	Display/ Branch	AIT Comment
	ET=+ UT=+00.00.02	SET_OBS_STEP  Command Parameter(s) : OBSERVATION_STEP SP03N500  TC Control Flags : GBM IL DSE ---- Subsch. ID : 370 Det. descr. : SET OBSERVATION STEP	SET_OBS_STEP  SC003500  0 <hex>	TC	
	ET=+ UT=+00.00.00	SET_BBID  Command Parameter(s) : BUILDING_BLOCK_ID SP01N500  TC Control Flags : GBM IL DSE ---- Subsch. ID : 370 Det. descr. : SET BUILDING BLOCK IDENTIFIER	SET_BBID  SC001500  88400001 <hex>	TC	
	ET=+ UT=+00.00.02	SET_OBS_STEP  Command Parameter(s) : OBSERVATION_STEP SP03N500  TC Control Flags : GBM IL DSE ---- Subsch. ID : 370 Det. descr. : SET OBSERVATION STEP	SET_OBS_STEP  SC003500  1 <hex>	TC	
	ET=+ UT=+00.00.00	SEND_DRCU_COMMAND  Command Parameter(s) : DRCUCOMMAND SPD4N505 OVERRIDE SPD9N505  TC Control Flags : GBM IL DSE ---- Subsch. ID : 370 Det. descr. : SEND A SINGLE COMMAND TO THE DRCU	SEND_DRCU_COMMAND  SCD06505  84010000 <hex> 0 <hex> (Def)	TC	
	ET=+ UT=+00.00.01	SEND_DRCU_COMMAND  Command Parameter(s) : DRCUCOMMAND SPD4N505 OVERRIDE SPD9N505  TC Control Flags : GBM IL DSE ---- Subsch. ID : 370 Det. descr. : SEND A SINGLE COMMAND TO THE DRCU	SEND_DRCU_COMMAND  SCD06505  84020000 <hex> 0 <hex> (Def)	TC	
	ET=+ UT=+00.00.00	SEND_DRCU_COMMAND  Command Parameter(s) : DRCUCOMMAND SPD4N505 OVERRIDE SPD9N505  TC Control Flags : GBM IL DSE ---- Subsch. ID : 370 Det. descr. : SEND A SINGLE COMMAND TO THE DRCU	SEND_DRCU_COMMAND  SCD06505  84030000 <hex> 0 <hex> (Def)	TC	

Mode\_DcuFunc13\_Phot BDA Integrity Check  
 File: H\_COP\_SPI\_DPIC.xls  
 Author: L.Lucas-hp



Step No.	Time	Activity/Remarks	TC/TLM	Display/ Branch	AIT Comment
	ET=+ UT=+00.00.01	SEND_DRCU_COMMAND  SEND_DRCU_COMMAND  Command Parameter(s) : DRCUCOMMAND SPD4N505 OVERRIDE SPD9N505  TC Control Flags :  GEM IL DSE --- -- ---  Subsch. ID : 370 Det. descr. : SEND A SINGLE COMMAND TO THE DRCU	SCD06505  84040000 <hex> 0 <hex> (Def)	TC	
	ET=+ UT=+00.00.01	SET_OBS_STEP  SET_OBS_STEP  Command Parameter(s) : OBSERVATION_STEP SP03N500  TC Control Flags :  GEM IL DSE --- -- ---  Subsch. ID : 370 Det. descr. : SET OBSERVATION STEP	SC003500  0 <hex>	TC	
	ET=+ UT=+00.00.00	SET_BBID  SET_BBID  Command Parameter(s) : BUILDING_BLOCK_ID SP01N500  TC Control Flags :  GEM IL DSE --- -- ---  Subsch. ID : 370 Det. descr. : SET BUILDING BLOCK IDENTIFIER	SC001500  80000000 <hex>	TC	
	ET=+ UT=+00.00.03	SET_OBS_STEP  SET_OBS_STEP  Command Parameter(s) : OBSERVATION_STEP SP03N500  TC Control Flags :  GEM IL DSE --- -- ---  Subsch. ID : 370 Det. descr. : SET OBSERVATION STEP	SC003500  0 <hex>	TC	
	ET=+ UT=+00.00.00	SET_BBID  SET_BBID  Command Parameter(s) : BUILDING_BLOCK_ID SP01N500  TC Control Flags :  GEM IL DSE --- -- ---  Subsch. ID : 370 Det. descr. : SET BUILDING BLOCK IDENTIFIER	SC001500  881e0001 <hex>	TC	
	ET=+ UT=+00.00.02	SET_OBS_STEP  SET_OBS_STEP  Command Parameter(s) : OBSERVATION_STEP SP03N500  TC Control Flags :  GEM IL DSE --- -- ---  Subsch. ID : 370 Det. descr. : SET OBSERVATION STEP	SC003500  1 <hex>	TC	

Mode\_DcuFunc13\_Phot BDA Integrity Check  
 File: H\_COP\_SPI\_DPIC.xls  
 Author: L.Lucas-hp



Step No.	Time	Activity/Remarks	TC/TLM	Display/ Branch	AIT Comment
	ET=+ UT=+00.00.01	SEND_DRCU_COMMAND  SEND_DRCU_COMMAND  Command Parameter(s) : DRCUCOMMAND           SPD4N505 OVERRIDE        SPD9N505  TC Control Flags :  GBM IL DSE --- -- ---  Subsch. ID : 370 Det. descr. : SEND A SINGLE COMMAND TO THE DRCU	SCD06505  843c0010 <hex> 0 <hex> (Def)	TC	
	ET=+ UT=+00.00.00	SEND_DRCU_COMMAND  SEND_DRCU_COMMAND  Command Parameter(s) : DRCUCOMMAND           SPD4N505 OVERRIDE        SPD9N505  TC Control Flags :  GBM IL DSE --- -- ---  Subsch. ID : 370 Det. descr. : SEND A SINGLE COMMAND TO THE DRCU	SCD06505  843e0001 <hex> 0 <hex> (Def)	TC	
	ET=+ UT=+00.00.03	SEND_DRCU_COMMAND  SEND_DRCU_COMMAND  Command Parameter(s) : DRCUCOMMAND           SPD4N505 OVERRIDE        SPD9N505  TC Control Flags :  GBM IL DSE --- -- ---  Subsch. ID : 370 Det. descr. : SEND A SINGLE COMMAND TO THE DRCU	SCD06505  843e0000 <hex> 0 <hex> (Def)	TC	
	ET=+ UT=+00.00.00	SEND_DRCU_COMMAND  SEND_DRCU_COMMAND  Command Parameter(s) : DRCUCOMMAND           SPD4N505 OVERRIDE        SPD9N505  TC Control Flags :  GBM IL DSE --- -- ---  Subsch. ID : 370 Det. descr. : SEND A SINGLE COMMAND TO THE DRCU	SCD06505  843c0018 <hex> 0 <hex> (Def)	TC	
	ET=+ UT=+00.00.01	SEND_DRCU_COMMAND  SEND_DRCU_COMMAND  Command Parameter(s) : DRCUCOMMAND           SPD4N505 OVERRIDE        SPD9N505  TC Control Flags :  GBM IL DSE --- -- ---  Subsch. ID : 370 Det. descr. : SEND A SINGLE COMMAND TO THE DRCU	SCD06505  843e0001 <hex> 0 <hex> (Def)	TC	

Mode\_DcuFunc13\_Phot BDA Integrity Check  
 File: H\_COP\_SPI\_DPIC.xls  
 Author: L.Lucas-hp



Step No.	Time	Activity/Remarks	TC/TLM	Display/ Branch	AIT Comment
	ET=+ UT=+00.00.03	SEND_DRCU_COMMAND  SEND_DRCU_COMMAND  Command Parameter(s) : DRCUCOMMAND SPD4N505 OVERRIDE SPD9N505  TC Control Flags :  GBM IL DSE --- --  Subsch. ID : 370 Det. descr. : SEND A SINGLE COMMAND TO THE DRCU	SCD06505  843e0000 <hex> 0 <hex> (Def)	TC	
	ET=+ UT=+00.00.01	FLUSH_FIFO  FLUSH_FIFO  Command Parameter(s) : FIFOFLAGS SPD0N505  TC Control Flags :  GBM IL DSE --- --  Subsch. ID : 370 Det. descr. : FORCE DPU TO READ SCIENCE DATA FROM FIFOS AND FLUSH CONTENTS	SCD01505  1000 <hex>	TC	
	ET=+ UT=+00.00.01	SEND_DRCU_COMMAND  SEND_DRCU_COMMAND  Command Parameter(s) : DRCUCOMMAND SPD4N505 OVERRIDE SPD9N505  TC Control Flags :  GBM IL DSE --- --  Subsch. ID : 370 Det. descr. : SEND A SINGLE COMMAND TO THE DRCU	SCD06505  843c0000 <hex> 0 <hex> (Def)	TC	
	ET=+ UT=+00.00.00	SET_OBS_STEP  SET_OBS_STEP  Command Parameter(s) : OBSERVATION_STEP SP03N500  TC Control Flags :  GBM IL DSE --- --  Subsch. ID : 370 Det. descr. : SET OBSERVATION STEP	SC003500  0 <hex>	TC	
	ET=+ UT=+00.00.01	SET_BBID  SET_BBID  Command Parameter(s) : BUILDING_BLOCK_ID SP01N500  TC Control Flags :  GBM IL DSE --- --  Subsch. ID : 370 Det. descr. : SET BUILDING BLOCK IDENTIFIER	SC001500  80000000 <hex>	TC	
	ET=+ UT=+00.00.02	SET_OBS_STEP  SET_OBS_STEP  Command Parameter(s) : OBSERVATION_STEP SP03N500  TC Control Flags :  GBM IL DSE --- --  Subsch. ID : 370 Det. descr. : SET OBSERVATION STEP	SC003500  0 <hex>	TC	

Mode\_DcuFunc13\_Phot BDA Integrity Check  
 File: H\_COP\_SPI\_DPIC.xls  
 Author: L.Lucas-hp



Step No.	Time	Activity/Remarks	TC/TLM	Display/ Branch	AIT Comment
	ET=+ UT=+00.00.00	SET_BBID  SET_BBID  Command Parameter(s) : BUILDING_BLOCK_ID      SPD01N500  TC Control Flags :  GBM IL DSE ----  Subsch. ID : 370 Det. descr. : SET BUILDING BLOCK IDENTIFIER	SC001500  88000001 <hex>	TC	
	ET=+ UT=+00.00.02	SEND_DRCU_COMMAND  SEND_DRCU_COMMAND  Command Parameter(s) : DRCUCOMMAND      SPD4N505 OVERRIDE      SPD9N505  TC Control Flags :  GBM IL DSE --- --  Subsch. ID : 370 Det. descr. : SEND A SINGLE COMMAND TO THE DRCU	SCD06505  843c0000 <hex> 0 <hex> (Def)	TC	
	ET=+ UT=+00.00.00	SET_OBS_STEP  SET_OBS_STEP  Command Parameter(s) : OBSERVATION_STEP      SPD03N500  TC Control Flags :  GBM IL DSE --- --  Subsch. ID : 370 Det. descr. : SET OBSERVATION STEP	SC003500  1 <hex>	TC	
	ET=+ UT=+00.00.01	SEND_DRCU_COMMAND  SEND_DRCU_COMMAND  Command Parameter(s) : DRCUCOMMAND      SPD4N505 OVERRIDE      SPD9N505  TC Control Flags :  GBM IL DSE --- --  Subsch. ID : 370 Det. descr. : SEND A SINGLE COMMAND TO THE DRCU	SCD06505  843e0001 <hex> 0 <hex> (Def)	TC	
	ET=+ UT=+00.00.10	SEND_DRCU_COMMAND  SEND_DRCU_COMMAND  Command Parameter(s) : DRCUCOMMAND      SPD4N505 OVERRIDE      SPD9N505  TC Control Flags :  GBM IL DSE --- --  Subsch. ID : 370 Det. descr. : SEND A SINGLE COMMAND TO THE DRCU	SCD06505  843e0000 <hex> 0 <hex> (Def)	TC	
	ET=+ UT=+00.00.01	FLUSH_FIFO  FLUSH_FIFO  Command Parameter(s) : FIFOFLAGS      SPD0N505  TC Control Flags :  GBM IL DSE --- --  Subsch. ID : 370 Det. descr. : FORCE DPU TO READ SCIENCE DATA FROM FIFOS AND FLUSH CONTENTS	SCD01505  1000 <hex>	TC	

Mode\_DcuFunc13\_Phot BDA Integrity Check  
 File: H\_COP\_SPI\_DPIC.xls  
 Author: L.Lucas-hp



Step No.	Time	Activity/Remarks	TC/TLM	Display/ Branch	AIT Comment
	ET=+ UT=+00.00.01	SET_OBS_STEP  Command Parameter(s) : OBSERVATION_STEP SP03N500  TC Control Flags : GBM IL DSE ---- Subsch. ID : 370 Det. descr. : SET OBSERVATION STEP	SET_OBS_STEP  SC003500  ffff <hex>	TC	
	ET=+ UT=+00.00.01	SET_OBS_STEP  Command Parameter(s) : OBSERVATION_STEP SP03N500  TC Control Flags : GBM IL DSE ---- Subsch. ID : 370 Det. descr. : SET OBSERVATION STEP	SET_OBS_STEP  SC003500  0 <hex>	TC	
	ET=+ UT=+00.00.00	SET_BBID  Command Parameter(s) : BUILDING_BLOCK_ID SP01N500  TC Control Flags : GBM IL DSE ---- Subsch. ID : 370 Det. descr. : SET BUILDING BLOCK IDENTIFIER	SET_BBID  SC001500  80000000 <hex>	TC	
	ET=+ UT=+00.00.02	SET_OBS_STEP  Command Parameter(s) : OBSERVATION_STEP SP03N500  TC Control Flags : GBM IL DSE ---- Subsch. ID : 370 Det. descr. : SET OBSERVATION STEP	SET_OBS_STEP  SC003500  0 <hex>	TC	
	ET=+ UT=+00.00.00	SET_BBID  Command Parameter(s) : BUILDING_BLOCK_ID SP01N500  TC Control Flags : GBM IL DSE ---- Subsch. ID : 370 Det. descr. : SET BUILDING BLOCK IDENTIFIER	SET_BBID  SC001500  88400002 <hex>	TC	
	ET=+ UT=+00.00.02	SET_OBS_STEP  Command Parameter(s) : OBSERVATION_STEP SP03N500  TC Control Flags : GBM IL DSE ---- Subsch. ID : 370 Det. descr. : SET OBSERVATION STEP	SET_OBS_STEP  SC003500  1 <hex>	TC	

Mode\_DcuFunc13\_Phot BDA Integrity Check  
 File: H\_COP\_SPI\_DPIC.xls  
 Author: L.Lucas-hp



Step No.	Time	Activity/Remarks	TC/TLM	Display/ Branch	AIT Comment
	ET=+ UT=+00.00.00	SEND_DRCU_COMMAND  SEND_DRCU_COMMAND  Command Parameter(s) : DRCUCOMMAND           SPD4N505 OVERRIDE        SPD9N505  TC Control Flags :  GBM IL DSE --- -- ---  Subsch. ID : 370 Det. descr. : SEND A SINGLE COMMAND TO THE DRCU	SCD06505  84010005 <hex> 0 <hex> (Def)	TC	
	ET=+ UT=+00.00.01	SEND_DRCU_COMMAND  SEND_DRCU_COMMAND  Command Parameter(s) : DRCUCOMMAND           SPD4N505 OVERRIDE        SPD9N505  TC Control Flags :  GBM IL DSE --- -- ---  Subsch. ID : 370 Det. descr. : SEND A SINGLE COMMAND TO THE DRCU	SCD06505  84020005 <hex> 0 <hex> (Def)	TC	
	ET=+ UT=+00.00.00	SEND_DRCU_COMMAND  SEND_DRCU_COMMAND  Command Parameter(s) : DRCUCOMMAND           SPD4N505 OVERRIDE        SPD9N505  TC Control Flags :  GBM IL DSE --- -- ---  Subsch. ID : 370 Det. descr. : SEND A SINGLE COMMAND TO THE DRCU	SCD06505  84030005 <hex> 0 <hex> (Def)	TC	
	ET=+ UT=+00.00.01	SEND_DRCU_COMMAND  SEND_DRCU_COMMAND  Command Parameter(s) : DRCUCOMMAND           SPD4N505 OVERRIDE        SPD9N505  TC Control Flags :  GBM IL DSE --- -- ---  Subsch. ID : 370 Det. descr. : SEND A SINGLE COMMAND TO THE DRCU	SCD06505  84040005 <hex> 0 <hex> (Def)	TC	
	ET=+ UT=+00.00.01	SET_OBS_STEP  SET_OBS_STEP  Command Parameter(s) : OBSERVATION_STEP        SP03N500  TC Control Flags :  GBM IL DSE --- -- ---  Subsch. ID : 370 Det. descr. : SET OBSERVATION STEP	SC003500  0 <hex>	TC	
	ET=+ UT=+00.00.00	SET_BBID  SET_BBID  Command Parameter(s) : BUILDING_BLOCK_ID        SP01N500  TC Control Flags :  GBM IL DSE --- -- ---  Subsch. ID : 370 Det. descr. : SET BUILDING BLOCK IDENTIFIER	SC001500  80000000 <hex>	TC	

Mode\_DcuFunc13\_Phot BDA Integrity Check  
 File: H\_COP\_SPI\_DPIC.xls  
 Author: L.Lucas-hp



Step No.	Time	Activity/Remarks	TC/TLM	Display/ Branch	AIT Comment
	ET=+ UT=+00.00.03	SET_OBS_STEP  Command Parameter(s) : OBSERVATION_STEP SP03N500  TC Control Flags : GBM IL DSE ---- Subsch. ID : 370 Det. descr. : SET OBSERVATION STEP	SET_OBS_STEP  SC003500  0 <hex>	TC	
	ET=+ UT=+00.00.00	SET_BBID  Command Parameter(s) : BUILDING_BLOCK_ID SP01N500  TC Control Flags : GBM IL DSE ---- Subsch. ID : 370 Det. descr. : SET BUILDING BLOCK IDENTIFIER	SET_BBID  SC001500  881e0002 <hex>	TC	
	ET=+ UT=+00.00.02	SET_OBS_STEP  Command Parameter(s) : OBSERVATION_STEP SP03N500  TC Control Flags : GBM IL DSE ---- Subsch. ID : 370 Det. descr. : SET OBSERVATION STEP	SET_OBS_STEP  SC003500  1 <hex>	TC	
	ET=+ UT=+00.00.01	SEND_DRCU_COMMAND  Command Parameter(s) : DRCUCOMMAND SPD4N505 OVERRIDE SPD9N505  TC Control Flags : GBM IL DSE ---- Subsch. ID : 370 Det. descr. : SEND A SINGLE COMMAND TO THE DRCU	SEND_DRCU_COMMAND  SCD06505  843c0010 <hex> 0 <hex> (Def)	TC	
	ET=+ UT=+00.00.00	SEND_DRCU_COMMAND  Command Parameter(s) : DRCUCOMMAND SPD4N505 OVERRIDE SPD9N505  TC Control Flags : GBM IL DSE ---- Subsch. ID : 370 Det. descr. : SEND A SINGLE COMMAND TO THE DRCU	SEND_DRCU_COMMAND  SCD06505  843e0001 <hex> 0 <hex> (Def)	TC	
	ET=+ UT=+00.00.03	SEND_DRCU_COMMAND  Command Parameter(s) : DRCUCOMMAND SPD4N505 OVERRIDE SPD9N505  TC Control Flags : GBM IL DSE ---- Subsch. ID : 370 Det. descr. : SEND A SINGLE COMMAND TO THE DRCU	SEND_DRCU_COMMAND  SCD06505  843e0000 <hex> 0 <hex> (Def)	TC	



Mode\_DcuFunc13\_Phot BDA Integrity Check  
 File: H\_COP\_SPI\_DPIC.xls  
 Author: L.Lucas-hp



Step No.	Time	Activity/Remarks	TC/TLM	Display/ Branch	AIT Comment
	ET=+ UT=+00.00.00	SEND_DRCU_COMMAND  SEND_DRCU_COMMAND  Command Parameter(s) : DRCUCOMMAND           SPD4N505 OVERRIDE        SPD9N505  TC Control Flags :  GBM IL DSE ---- --  Subsch. ID : 370 Det. descr. : SEND A SINGLE COMMAND TO THE DRCU	SCD06505  843c0018 <hex> 0 <hex> (Def)	TC	
	ET=+ UT=+00.00.01	SEND_DRCU_COMMAND  SEND_DRCU_COMMAND  Command Parameter(s) : DRCUCOMMAND           SPD4N505 OVERRIDE        SPD9N505  TC Control Flags :  GBM IL DSE ---- --  Subsch. ID : 370 Det. descr. : SEND A SINGLE COMMAND TO THE DRCU	SCD06505  843e0001 <hex> 0 <hex> (Def)	TC	
	ET=+ UT=+00.00.03	SEND_DRCU_COMMAND  SEND_DRCU_COMMAND  Command Parameter(s) : DRCUCOMMAND           SPD4N505 OVERRIDE        SPD9N505  TC Control Flags :  GBM IL DSE ---- --  Subsch. ID : 370 Det. descr. : SEND A SINGLE COMMAND TO THE DRCU	SCD06505  843e0000 <hex> 0 <hex> (Def)	TC	
	ET=+ UT=+00.00.01	FLUSH_FIFO  FLUSH_FIFO  Command Parameter(s) : FIFOFLAGS            SPD0N505  TC Control Flags :  GBM IL DSE ---- --  Subsch. ID : 370 Det. descr. : FORCE DPU TO READ SCIENCE DATA FROM FIFOS AND FLUSH CONTENTS	SCD01505  1000 <hex>	TC	
	ET=+ UT=+00.00.01	SEND_DRCU_COMMAND  SEND_DRCU_COMMAND  Command Parameter(s) : DRCUCOMMAND           SPD4N505 OVERRIDE        SPD9N505  TC Control Flags :  GBM IL DSE ---- --  Subsch. ID : 370 Det. descr. : SEND A SINGLE COMMAND TO THE DRCU	SCD06505  843c0000 <hex> 0 <hex> (Def)	TC	
	ET=+ UT=+00.00.00	SET_OBS_STEP  SET_OBS_STEP  Command Parameter(s) : OBSERVATION_STEP        SP03N500  TC Control Flags :  GBM IL DSE ---- --  Subsch. ID : 370 Det. descr. : SET OBSERVATION STEP	SC003500  0 <hex>	TC	

Mode\_DcuFunc13\_Phot BDA Integrity Check  
 File: H\_COP\_SPI\_DPIC.xls  
 Author: L.Lucas-hp



Step No.	Time	Activity/Remarks	TC/TLM	Display/ Branch	AIT Comment
	ET=+ UT=+00.00.01	SET_BBID  Command Parameter(s) : BUILDING_BLOCK_ID SP01N500  TC Control Flags : GBM IL DSE ---- Subsch. ID : 370 Det. descr. : SET BUILDING BLOCK IDENTIFIER	SET_BBID  SC001500  80000000 <hex>	TC	
	ET=+ UT=+00.00.02	SET_OBS_STEP  Command Parameter(s) : OBSERVATION_STEP SP03N500  TC Control Flags : GBM IL DSE ---- Subsch. ID : 370 Det. descr. : SET OBSERVATION STEP	SET_OBS_STEP  SC003500  0 <hex>	TC	
	ET=+ UT=+00.00.00	SET_BBID  Command Parameter(s) : BUILDING_BLOCK_ID SP01N500  TC Control Flags : GBM IL DSE ---- Subsch. ID : 370 Det. descr. : SET BUILDING BLOCK IDENTIFIER	SET_BBID  SC001500  88000002 <hex>	TC	
	ET=+ UT=+00.00.02	SEND_DRCU_COMMAND  Command Parameter(s) : DRCUCOMMAND SPD4N505 OVERRIDE SPD9N505  TC Control Flags : GBM IL DSE ---- Subsch. ID : 370 Det. descr. : SEND A SINGLE COMMAND TO THE DRCU	SEND_DRCU_COMMAND  SCD06505  843c0000 <hex> 0 <hex> (Def)	TC	
	ET=+ UT=+00.00.00	SET_OBS_STEP  Command Parameter(s) : OBSERVATION_STEP SP03N500  TC Control Flags : GBM IL DSE ---- Subsch. ID : 370 Det. descr. : SET OBSERVATION STEP	SET_OBS_STEP  SC003500  1 <hex>	TC	
	ET=+ UT=+00.00.01	SEND_DRCU_COMMAND  Command Parameter(s) : DRCUCOMMAND SPD4N505 OVERRIDE SPD9N505  TC Control Flags : GBM IL DSE ---- Subsch. ID : 370 Det. descr. : SEND A SINGLE COMMAND TO THE DRCU	SEND_DRCU_COMMAND  SCD06505  843e0001 <hex> 0 <hex> (Def)	TC	

Mode\_DcuFunc13\_Phot BDA Integrity Check  
 File: H\_COP\_SPI\_DPIC.xls  
 Author: L.Lucas-hp



Step No.	Time	Activity/Remarks	TC/TLM	Display/ Branch	AIT Comment
	ET=+ UT=+00.00.10	SEND_DRCU_COMMAND  SEND_DRCU_COMMAND  Command Parameter(s) : DRCUCOMMAND           SPD4N505 OVERRIDE                SPD9N505  TC Control Flags :  GBM IL DSE --- -- ---  Subsch. ID : 370 Det. descr. : SEND A SINGLE COMMAND TO THE DRCU	SCD06505  843e0000 <hex> 0 <hex> (Def)	TC	
	ET=+ UT=+00.00.01	FLUSH_FIFO  FLUSH_FIFO  Command Parameter(s) : FIFOFLLAGS             SPD0N505  TC Control Flags :  GBM IL DSE --- -- ---  Subsch. ID : 370 Det. descr. : FORCE DPU TO READ SCIENCE DATA FROM FIFOS AND FLUSH CONTENTS	SCD01505  1000 <hex>	TC	
	ET=+ UT=+00.00.01	SET_OBS_STEP  SET_OBS_STEP  Command Parameter(s) : OBSERVATION_STEP       SP03N500  TC Control Flags :  GBM IL DSE --- -- ---  Subsch. ID : 370 Det. descr. : SET OBSERVATION STEP	SC003500  ffff <hex>	TC	
	ET=+ UT=+00.00.01	SET_OBS_STEP  SET_OBS_STEP  Command Parameter(s) : OBSERVATION_STEP       SP03N500  TC Control Flags :  GBM IL DSE --- -- ---  Subsch. ID : 370 Det. descr. : SET OBSERVATION STEP	SC003500  0 <hex>	TC	
	ET=+ UT=+00.00.00	SET_BBID  SET_BBID  Command Parameter(s) : BUILDING_BLOCK_ID       SP01N500  TC Control Flags :  GBM IL DSE --- -- ---  Subsch. ID : 370 Det. descr. : SET BUILDING BLOCK IDENTIFIER	SC001500  80000000 <hex>	TC	
	ET=+ UT=+00.00.02	SET_OBS_STEP  SET_OBS_STEP  Command Parameter(s) : OBSERVATION_STEP       SP03N500  TC Control Flags :  GBM IL DSE --- -- ---  Subsch. ID : 370 Det. descr. : SET OBSERVATION STEP	SC003500  0 <hex>	TC	

Mode\_DcuFunc13\_Phot BDA Integrity Check  
 File: H\_COP\_SPI\_DPIC.xls  
 Author: L.Lucas-hp



Step No.	Time	Activity/Remarks	TC/TLM	Display/ Branch	AIT Comment
	ET=+ UT=+00.00.00	SET_BBID  SET_BBID  Command Parameter(s) : BUILDING_BLOCK_ID SP01N500  TC Control Flags : GBM IL DSE ---- Subsch. ID : 370 Det. descr. : SET BUILDING BLOCK IDENTIFIER	SC001500  88400003 <hex>	TC	
	ET=+ UT=+00.00.02	SET_OBS_STEP  SET_OBS_STEP  Command Parameter(s) : OBSERVATION_STEP SP03N500  TC Control Flags : GBM IL DSE ---- Subsch. ID : 370 Det. descr. : SET OBSERVATION STEP	SC003500  1 <hex>	TC	
	ET=+ UT=+00.00.00	SEND_DRCU_COMMAND  SEND_DRCU_COMMAND  Command Parameter(s) : DRCUCOMMAND SPD4N505 OVERRIDE SPD9N505  TC Control Flags : GBM IL DSE ---- Subsch. ID : 370 Det. descr. : SEND A SINGLE COMMAND TO THE DRCU	SCD06505  8401000a <hex> 0 <hex> (Def)	TC	
	ET=+ UT=+00.00.01	SEND_DRCU_COMMAND  SEND_DRCU_COMMAND  Command Parameter(s) : DRCUCOMMAND SPD4N505 OVERRIDE SPD9N505  TC Control Flags : GBM IL DSE ---- Subsch. ID : 370 Det. descr. : SEND A SINGLE COMMAND TO THE DRCU	SCD06505  8402000a <hex> 0 <hex> (Def)	TC	
	ET=+ UT=+00.00.00	SEND_DRCU_COMMAND  SEND_DRCU_COMMAND  Command Parameter(s) : DRCUCOMMAND SPD4N505 OVERRIDE SPD9N505  TC Control Flags : GBM IL DSE ---- Subsch. ID : 370 Det. descr. : SEND A SINGLE COMMAND TO THE DRCU	SCD06505  8403000a <hex> 0 <hex> (Def)	TC	
	ET=+ UT=+00.00.01	SEND_DRCU_COMMAND  SEND_DRCU_COMMAND  Command Parameter(s) : DRCUCOMMAND SPD4N505 OVERRIDE SPD9N505  TC Control Flags : GBM IL DSE ---- Subsch. ID : 370 Det. descr. : SEND A SINGLE COMMAND TO THE DRCU	SCD06505  8404000a <hex> 0 <hex> (Def)	TC	

Mode\_DcuFunc13\_Phot BDA Integrity Check  
 File: H\_COP\_SPI\_DPIC.xls  
 Author: L.Lucas-hp



Step No.	Time	Activity/Remarks	TC/TLM	Display/ Branch	AIT Comment
	ET=+ UT=+00.00.01	SET_OBS_STEP  Command Parameter(s) : OBSERVATION_STEP SP03N500  TC Control Flags : GBM IL DSE ---- Subsch. ID : 370 Det. descr. : SET OBSERVATION STEP	SET_OBS_STEP  SC003500  0 <hex>	TC	
	ET=+ UT=+00.00.00	SET_BBID  Command Parameter(s) : BUILDING_BLOCK_ID SP01N500  TC Control Flags : GBM IL DSE ---- Subsch. ID : 370 Det. descr. : SET BUILDING BLOCK IDENTIFIER	SET_BBID  SC001500  80000000 <hex>	TC	
	ET=+ UT=+00.00.03	SET_OBS_STEP  Command Parameter(s) : OBSERVATION_STEP SP03N500  TC Control Flags : GBM IL DSE ---- Subsch. ID : 370 Det. descr. : SET OBSERVATION STEP	SET_OBS_STEP  SC003500  0 <hex>	TC	
	ET=+ UT=+00.00.00	SET_BBID  Command Parameter(s) : BUILDING_BLOCK_ID SP01N500  TC Control Flags : GBM IL DSE ---- Subsch. ID : 370 Det. descr. : SET BUILDING BLOCK IDENTIFIER	SET_BBID  SC001500  881e0003 <hex>	TC	
	ET=+ UT=+00.00.02	SET_OBS_STEP  Command Parameter(s) : OBSERVATION_STEP SP03N500  TC Control Flags : GBM IL DSE ---- Subsch. ID : 370 Det. descr. : SET OBSERVATION STEP	SET_OBS_STEP  SC003500  1 <hex>	TC	
	ET=+ UT=+00.00.01	SEND_DRCU_COMMAND  Command Parameter(s) : DRCUCOMMAND SPD4N505 OVERRIDE SPD9N505  TC Control Flags : GBM IL DSE ---- Subsch. ID : 370 Det. descr. : SEND A SINGLE COMMAND TO THE DRCU	SEND_DRCU_COMMAND  SCD06505  843c0010 <hex> 0 <hex> (Def)	TC	

Mode\_DcuFunc13\_Phot BDA Integrity Check  
 File: H\_COP\_SPI\_DPIC.xls  
 Author: L.Lucas-hp



Step No.	Time	Activity/Remarks	TC/TLM	Display/ Branch	AIT Comment
	ET=+ UT=+00.00.00	SEND_DRCU_COMMAND  SEND_DRCU_COMMAND  Command Parameter(s) : DRCUCOMMAND           SPD4N505 OVERRIDE        SPD9N505  TC Control Flags :  GBM IL DSE --- -- ---  Subsch. ID : 370 Det. descr. : SEND A SINGLE COMMAND TO THE DRCU	SCD06505  843e0001 <hex> 0 <hex> (Def)	TC	
	ET=+ UT=+00.00.03	SEND_DRCU_COMMAND  SEND_DRCU_COMMAND  Command Parameter(s) : DRCUCOMMAND           SPD4N505 OVERRIDE        SPD9N505  TC Control Flags :  GBM IL DSE --- -- ---  Subsch. ID : 370 Det. descr. : SEND A SINGLE COMMAND TO THE DRCU	SCD06505  843e0000 <hex> 0 <hex> (Def)	TC	
	ET=+ UT=+00.00.00	SEND_DRCU_COMMAND  SEND_DRCU_COMMAND  Command Parameter(s) : DRCUCOMMAND           SPD4N505 OVERRIDE        SPD9N505  TC Control Flags :  GBM IL DSE --- -- ---  Subsch. ID : 370 Det. descr. : SEND A SINGLE COMMAND TO THE DRCU	SCD06505  843c0018 <hex> 0 <hex> (Def)	TC	
	ET=+ UT=+00.00.01	SEND_DRCU_COMMAND  SEND_DRCU_COMMAND  Command Parameter(s) : DRCUCOMMAND           SPD4N505 OVERRIDE        SPD9N505  TC Control Flags :  GBM IL DSE --- -- ---  Subsch. ID : 370 Det. descr. : SEND A SINGLE COMMAND TO THE DRCU	SCD06505  843e0001 <hex> 0 <hex> (Def)	TC	
	ET=+ UT=+00.00.03	SEND_DRCU_COMMAND  SEND_DRCU_COMMAND  Command Parameter(s) : DRCUCOMMAND           SPD4N505 OVERRIDE        SPD9N505  TC Control Flags :  GBM IL DSE --- -- ---  Subsch. ID : 370 Det. descr. : SEND A SINGLE COMMAND TO THE DRCU	SCD06505  843e0000 <hex> 0 <hex> (Def)	TC	



Mode\_DcuFunc13\_Phot BDA Integrity Check  
 File: H\_COP\_SPI\_DPIC.xls  
 Author: L.Lucas-hp



Step No.	Time	Activity/Remarks	TC/TLM	Display/ Branch	AIT Comment
	ET=+ UT=+00.00.02	SEND_DRCU_COMMAND SEND_DRCU_COMMAND  Command Parameter(s) : DRCUCOMMAND SPD4N505 OVERRIDE SPD9N505  TC Control Flags :  Subsch. ID : 370 Det. descr. : SEND A SINGLE COMMAND TO THE DRCU	SCD06505  843c0000 <hex> 0 <hex> (Def)	TC	
	ET=+ UT=+00.00.00	SET_OBS_STEP SET_OBS_STEP  Command Parameter(s) : OBSERVATION_STEP SP03N500  TC Control Flags :  Subsch. ID : 370 Det. descr. : SET OBSERVATION STEP	SC003500  1 <hex>	TC	
	ET=+ UT=+00.00.01	SEND_DRCU_COMMAND SEND_DRCU_COMMAND  Command Parameter(s) : DRCUCOMMAND SPD4N505 OVERRIDE SPD9N505  TC Control Flags :  Subsch. ID : 370 Det. descr. : SEND A SINGLE COMMAND TO THE DRCU	SCD06505  843e0001 <hex> 0 <hex> (Def)	TC	
	ET=+ UT=+00.00.10	SEND_DRCU_COMMAND SEND_DRCU_COMMAND  Command Parameter(s) : DRCUCOMMAND SPD4N505 OVERRIDE SPD9N505  TC Control Flags :  Subsch. ID : 370 Det. descr. : SEND A SINGLE COMMAND TO THE DRCU	SCD06505  843e0000 <hex> 0 <hex> (Def)	TC	
	ET=+ UT=+00.00.01	FLUSH_FIFO FLUSH_FIFO  Command Parameter(s) : FIFOFLAGS SPD0N505  TC Control Flags :  Subsch. ID : 370 Det. descr. : FORCE DPU TO READ SCIENCE DATA FROM FIFOS AND FLUSH CONTENTS	SCD01505  1000 <hex>	TC	
	ET=+ UT=+00.00.01	SET_OBS_STEP SET_OBS_STEP  Command Parameter(s) : OBSERVATION_STEP SP03N500  TC Control Flags :  Subsch. ID : 370 Det. descr. : SET OBSERVATION STEP	SC003500  fff <hex>	TC	



Mode\_DcuFunc13\_Phot BDA Integrity Check  
 File: H\_COP\_SPI\_DPIC.xls  
 Author: L.Lucas-hp



Step No.	Time	Activity/Remarks	TC/TLM	Display/ Branch	AIT Comment
	ET=+ UT=+00.00.01	SET_OBS_STEP  Command Parameter(s) : OBSERVATION_STEP SP03N500  TC Control Flags : GBM IL DSE ---- Subsch. ID : 370 Det. descr. : SET OBSERVATION STEP	SET_OBS_STEP  SC003500  0 <hex>	TC	
	ET=+ UT=+00.00.00	SET_BBID  Command Parameter(s) : BUILDING_BLOCK_ID SP01N500  TC Control Flags : GBM IL DSE ---- Subsch. ID : 370 Det. descr. : SET BUILDING BLOCK IDENTIFIER	SET_BBID  SC001500  80000000 <hex>	TC	
	ET=+ UT=+00.00.02	SET_OBS_STEP  Command Parameter(s) : OBSERVATION_STEP SP03N500  TC Control Flags : GBM IL DSE ---- Subsch. ID : 370 Det. descr. : SET OBSERVATION STEP	SET_OBS_STEP  SC003500  0 <hex>	TC	
	ET=+ UT=+00.00.00	SET_BBID  Command Parameter(s) : BUILDING_BLOCK_ID SP01N500  TC Control Flags : GBM IL DSE ---- Subsch. ID : 370 Det. descr. : SET BUILDING BLOCK IDENTIFIER	SET_BBID  SC001500  88400004 <hex>	TC	
	ET=+ UT=+00.00.02	SET_OBS_STEP  Command Parameter(s) : OBSERVATION_STEP SP03N500  TC Control Flags : GBM IL DSE ---- Subsch. ID : 370 Det. descr. : SET OBSERVATION STEP	SET_OBS_STEP  SC003500  1 <hex>	TC	
	ET=+ UT=+00.00.00	SEND_DRCU_COMMAND  Command Parameter(s) : DRCUCOMMAND SPD4N505 OVERRIDE SPD9N505  TC Control Flags : GBM IL DSE ---- Subsch. ID : 370 Det. descr. : SEND A SINGLE COMMAND TO THE DRCU	SEND_DRCU_COMMAND  SCD06505  8401000c <hex> 0 <hex> (Def)	TC	

Mode\_DcuFunc13\_Phot BDA Integrity Check  
 File: H\_COP\_SPI\_DPIC.xls  
 Author: L.Lucas-hp



Step No.	Time	Activity/Remarks	TC/TLM	Display/ Branch	AIT Comment
	ET=+ UT=+00.00.01	SEND_DRCU_COMMAND  SEND_DRCU_COMMAND  Command Parameter(s) : DRCUCOMMAND           SPD4N505 OVERRIDE                SPD9N505  TC Control Flags :  GBM IL DSE --- -- ---  Subsch. ID : 370 Det. descr. : SEND A SINGLE COMMAND TO THE DRCU	SCD06505  840200c <hex> 0 <hex> (Def)	TC	
	ET=+ UT=+00.00.00	SEND_DRCU_COMMAND  SEND_DRCU_COMMAND  Command Parameter(s) : DRCUCOMMAND           SPD4N505 OVERRIDE                SPD9N505  TC Control Flags :  GBM IL DSE --- -- ---  Subsch. ID : 370 Det. descr. : SEND A SINGLE COMMAND TO THE DRCU	SCD06505  840300c <hex> 0 <hex> (Def)	TC	
	ET=+ UT=+00.00.01	SEND_DRCU_COMMAND  SEND_DRCU_COMMAND  Command Parameter(s) : DRCUCOMMAND           SPD4N505 OVERRIDE                SPD9N505  TC Control Flags :  GBM IL DSE --- -- ---  Subsch. ID : 370 Det. descr. : SEND A SINGLE COMMAND TO THE DRCU	SCD06505  840400c <hex> 0 <hex> (Def)	TC	
	ET=+ UT=+00.00.01	SET_OBS_STEP  SET_OBS_STEP  Command Parameter(s) : OBSERVATION_STEP       SP03N500  TC Control Flags :  GBM IL DSE --- -- ---  Subsch. ID : 370 Det. descr. : SET OBSERVATION STEP	SC003500  0 <hex>	TC	
	ET=+ UT=+00.00.00	SET_BBID  SET_BBID  Command Parameter(s) : BUILDING_BLOCK_ID       SP01N500  TC Control Flags :  GBM IL DSE --- -- ---  Subsch. ID : 370 Det. descr. : SET BUILDING BLOCK IDENTIFIER	SC001500  80000000 <hex>	TC	
	ET=+ UT=+00.00.03	SET_OBS_STEP  SET_OBS_STEP  Command Parameter(s) : OBSERVATION_STEP       SP03N500  TC Control Flags :  GBM IL DSE --- -- ---  Subsch. ID : 370 Det. descr. : SET OBSERVATION STEP	SC003500  0 <hex>	TC	

Mode\_DcuFunc13\_Phot BDA Integrity Check  
 File: H\_COP\_SPI\_DPIC.xls  
 Author: L.Lucas-hp



Step No.	Time	Activity/Remarks	TC/TLM	Display/ Branch	AIT Comment
	ET=+ UT=+00.00.00	SET_BBID  SET_BBID  Command Parameter(s) : BUILDING_BLOCK_ID SP01N500  TC Control Flags : GBM IL DSE ---- Subsch. ID : 370 Det. descr. : SET BUILDING BLOCK IDENTIFIER	SC001500  881e0004 <hex>	TC	
	ET=+ UT=+00.00.02	SET_OBS_STEP  SET_OBS_STEP  Command Parameter(s) : OBSERVATION_STEP SP03N500  TC Control Flags : GBM IL DSE ---- Subsch. ID : 370 Det. descr. : SET OBSERVATION STEP	SC003500  1 <hex>	TC	
	ET=+ UT=+00.00.01	SEND_DRCU_COMMAND  SEND_DRCU_COMMAND  Command Parameter(s) : DRCUCOMMAND SPD4N505 OVERRIDE SPD9N505  TC Control Flags : GBM IL DSE ---- Subsch. ID : 370 Det. descr. : SEND A SINGLE COMMAND TO THE DRCU	SCD06505  843c0010 <hex> 0 <hex> (Def)	TC	
	ET=+ UT=+00.00.00	SEND_DRCU_COMMAND  SEND_DRCU_COMMAND  Command Parameter(s) : DRCUCOMMAND SPD4N505 OVERRIDE SPD9N505  TC Control Flags : GBM IL DSE ---- Subsch. ID : 370 Det. descr. : SEND A SINGLE COMMAND TO THE DRCU	SCD06505  843e0001 <hex> 0 <hex> (Def)	TC	
	ET=+ UT=+00.00.03	SEND_DRCU_COMMAND  SEND_DRCU_COMMAND  Command Parameter(s) : DRCUCOMMAND SPD4N505 OVERRIDE SPD9N505  TC Control Flags : GBM IL DSE ---- Subsch. ID : 370 Det. descr. : SEND A SINGLE COMMAND TO THE DRCU	SCD06505  843e0000 <hex> 0 <hex> (Def)	TC	
	ET=+ UT=+00.00.00	SEND_DRCU_COMMAND  SEND_DRCU_COMMAND  Command Parameter(s) : DRCUCOMMAND SPD4N505 OVERRIDE SPD9N505  TC Control Flags : GBM IL DSE ---- Subsch. ID : 370 Det. descr. : SEND A SINGLE COMMAND TO THE DRCU	SCD06505  843c0018 <hex> 0 <hex> (Def)	TC	

Mode\_DcuFunc13\_Phot BDA Integrity Check  
 File: H\_COP\_SPI\_DPIC.xls  
 Author: L.Lucas-hp



Step No.	Time	Activity/Remarks	TC/TLM	Display/ Branch	AIT Comment
	ET=+ UT=+00.00.01	SEND_DRCU_COMMAND  SEND_DRCU_COMMAND  Command Parameter(s) : DRCUCOMMAND           SPD4N505 OVERRIDE           SPD9N505  TC Control Flags :  GBM IL DSE --- -- ---  Subsch. ID : 370 Det. descr. : SEND A SINGLE COMMAND TO THE DRCU	SCD06505  843e0001 <hex> 0 <hex> (Def)	TC	
	ET=+ UT=+00.00.03	SEND_DRCU_COMMAND  SEND_DRCU_COMMAND  Command Parameter(s) : DRCUCOMMAND           SPD4N505 OVERRIDE           SPD9N505  TC Control Flags :  GBM IL DSE --- -- ---  Subsch. ID : 370 Det. descr. : SEND A SINGLE COMMAND TO THE DRCU	SCD06505  843e0000 <hex> 0 <hex> (Def)	TC	
	ET=+ UT=+00.00.01	FLUSH_FIFO  FLUSH_FIFO  Command Parameter(s) : FIFOFLAGS           SPD0N505  TC Control Flags :  GBM IL DSE --- -- ---  Subsch. ID : 370 Det. descr. : FORCE DPU TO READ SCIENCE DATA FROM FIFOS AND FLUSH CONTENTS	SCD01505  1000 <hex>	TC	
	ET=+ UT=+00.00.01	SEND_DRCU_COMMAND  SEND_DRCU_COMMAND  Command Parameter(s) : DRCUCOMMAND           SPD4N505 OVERRIDE           SPD9N505  TC Control Flags :  GBM IL DSE --- -- ---  Subsch. ID : 370 Det. descr. : SEND A SINGLE COMMAND TO THE DRCU	SCD06505  843c0000 <hex> 0 <hex> (Def)	TC	
	ET=+ UT=+00.00.00	SET_OBS_STEP  SET_OBS_STEP  Command Parameter(s) : OBSERVATION_STEP           SP03N500  TC Control Flags :  GBM IL DSE --- -- ---  Subsch. ID : 370 Det. descr. : SET OBSERVATION STEP	SC003500  0 <hex>	TC	
	ET=+ UT=+00.00.01	SET_BBID  SET_BBID  Command Parameter(s) : BUILDING_BLOCK_ID           SP01N500  TC Control Flags :  GBM IL DSE --- -- ---  Subsch. ID : 370 Det. descr. : SET BUILDING BLOCK IDENTIFIER	SC001500  80000000 <hex>	TC	

Mode\_DcuFunc13\_Phot BDA Integrity Check  
 File: H\_COP\_SPI\_DPIC.xls  
 Author: L.Lucas-hp



Step No.	Time	Activity/Remarks	TC/TLM	Display/ Branch	AIT Comment
	ET=+ UT=+00.00.02	SET_OBS_STEP  Command Parameter(s) : OBSERVATION_STEP SP03N500  TC Control Flags : GBM IL DSE ---- Subsch. ID : 370 Det. descr. : SET OBSERVATION STEP	SET_OBS_STEP  SC003500  0 <hex>	TC	
	ET=+ UT=+00.00.00	SET_BBID  Command Parameter(s) : BUILDING_BLOCK_ID SP01N500  TC Control Flags : GBM IL DSE ---- Subsch. ID : 370 Det. descr. : SET BUILDING BLOCK IDENTIFIER	SET_BBID  SC001500  88000004 <hex>	TC	
	ET=+ UT=+00.00.02	SEND_DRCU_COMMAND  Command Parameter(s) : DRCUCOMMAND SPD4N505 OVERRIDE SPD9N505  TC Control Flags : GBM IL DSE ---- Subsch. ID : 370 Det. descr. : SEND A SINGLE COMMAND TO THE DRCU	SEND_DRCU_COMMAND  SCD06505  843c0000 <hex> 0 <hex> (Def)	TC	
	ET=+ UT=+00.00.00	SET_OBS_STEP  Command Parameter(s) : OBSERVATION_STEP SP03N500  TC Control Flags : GBM IL DSE ---- Subsch. ID : 370 Det. descr. : SET OBSERVATION STEP	SET_OBS_STEP  SC003500  1 <hex>	TC	
	ET=+ UT=+00.00.01	SEND_DRCU_COMMAND  Command Parameter(s) : DRCUCOMMAND SPD4N505 OVERRIDE SPD9N505  TC Control Flags : GBM IL DSE ---- Subsch. ID : 370 Det. descr. : SEND A SINGLE COMMAND TO THE DRCU	SEND_DRCU_COMMAND  SCD06505  843e0001 <hex> 0 <hex> (Def)	TC	
	ET=+ UT=+00.00.10	SEND_DRCU_COMMAND  Command Parameter(s) : DRCUCOMMAND SPD4N505 OVERRIDE SPD9N505  TC Control Flags : GBM IL DSE ---- Subsch. ID : 370 Det. descr. : SEND A SINGLE COMMAND TO THE DRCU	SEND_DRCU_COMMAND  SCD06505  843e0000 <hex> 0 <hex> (Def)	TC	

Mode\_DcuFunc13\_Phot BDA Integrity Check  
 File: H\_COP\_SPI\_DPIC.xls  
 Author: L.Lucas-hp



Step No.	Time	Activity/Remarks	TC/TLM	Display/ Branch	AIT Comment
	ET=+ UT=+00.00.01	FLUSH_FIFO  Command Parameter(s) : <b>FIFOFLAGS</b> <b>SPD0N505</b>  TC Control Flags :  <b>GBM IL DSE</b> --- -- ---  Subsch. ID : 370 Det. descr. : FORCE DPU TO READ SCIENCE DATA FROM FIFOS AND FLUSH CONTENTS	<b>FLUSH_FIFO</b>  <b>SCD01505</b>  <b>1000 &lt;hex&gt;</b>	TC	
	ET=+ UT=+00.00.01	SET_OBS_STEP  Command Parameter(s) : <b>OBSERVATION_STEP</b> <b>SP03N500</b>  TC Control Flags :  <b>GBM IL DSE</b> --- -- ---  Subsch. ID : 370 Det. descr. : SET OBSERVATION STEP	<b>SET_OBS_STEP</b>  <b>SC003500</b>  <b>ffff &lt;hex&gt;</b>	TC	
	ET=+ UT=+00.00.01	SET_OBS_STEP  Command Parameter(s) : <b>OBSERVATION_STEP</b> <b>SP03N500</b>  TC Control Flags :  <b>GBM IL DSE</b> --- -- ---  Subsch. ID : 370 Det. descr. : SET OBSERVATION STEP	<b>SET_OBS_STEP</b>  <b>SC003500</b>  <b>0 &lt;hex&gt;</b>	TC	
	ET=+ UT=+00.00.00	SET_BBID  Command Parameter(s) : <b>BUILDING_BLOCK_ID</b> <b>SP01N500</b>  TC Control Flags :  <b>GBM IL DSE</b> --- -- ---  Subsch. ID : 370 Det. descr. : SET BUILDING BLOCK IDENTIFIER	<b>SET_BBID</b>  <b>SC001500</b>  <b>80000000 &lt;hex&gt;</b>	TC	
	ET=+ UT=+00.00.02	SET_OBS_STEP  Command Parameter(s) : <b>OBSERVATION_STEP</b> <b>SP03N500</b>  TC Control Flags :  <b>GBM IL DSE</b> --- -- ---  Subsch. ID : 370 Det. descr. : SET OBSERVATION STEP	<b>SET_OBS_STEP</b>  <b>SC003500</b>  <b>0 &lt;hex&gt;</b>	TC	
	ET=+ UT=+00.00.00	SET_BBID  Command Parameter(s) : <b>BUILDING_BLOCK_ID</b> <b>SP01N500</b>  TC Control Flags :  <b>GBM IL DSE</b> --- -- ---  Subsch. ID : 370 Det. descr. : SET BUILDING BLOCK IDENTIFIER	<b>SET_BBID</b>  <b>SC001500</b>  <b>88400005 &lt;hex&gt;</b>	TC	

Mode\_DcuFunc13\_Phot BDA Integrity Check  
 File: H\_COP\_SPI\_DPIC.xls  
 Author: L.Lucas-hp



Step No.	Time	Activity/Remarks	TC/TLM	Display/ Branch	AIT Comment
	ET=+ UT=+00.00.02	SET_OBS_STEP  Command Parameter(s) : OBSERVATION_STEP                      SP03N500  TC Control Flags :  GBM IL DSE --- -- ---  Subsch. ID : 370 Det. descr. : SET OBSERVATION STEP	SET_OBS_STEP  SC003500  1 <hex>	TC	
	ET=+ UT=+00.00.00	SEND_DRCU_COMMAND  Command Parameter(s) : DRCUCOMMAND                      SPD4N505 OVERRIDE                            SPD9N505  TC Control Flags :  GBM IL DSE --- -- ---  Subsch. ID : 370 Det. descr. : SEND A SINGLE COMMAND TO THE DRCU	SEND_DRCU_COMMAND  SCD06505  84010011 <hex> 0 <hex> (Def)	TC	
	ET=+ UT=+00.00.01	SEND_DRCU_COMMAND  Command Parameter(s) : DRCUCOMMAND                      SPD4N505 OVERRIDE                            SPD9N505  TC Control Flags :  GBM IL DSE --- -- ---  Subsch. ID : 370 Det. descr. : SEND A SINGLE COMMAND TO THE DRCU	SEND_DRCU_COMMAND  SCD06505  84020011 <hex> 0 <hex> (Def)	TC	
	ET=+ UT=+00.00.00	SEND_DRCU_COMMAND  Command Parameter(s) : DRCUCOMMAND                      SPD4N505 OVERRIDE                            SPD9N505  TC Control Flags :  GBM IL DSE --- -- ---  Subsch. ID : 370 Det. descr. : SEND A SINGLE COMMAND TO THE DRCU	SEND_DRCU_COMMAND  SCD06505  84030011 <hex> 0 <hex> (Def)	TC	
	ET=+ UT=+00.00.01	SEND_DRCU_COMMAND  Command Parameter(s) : DRCUCOMMAND                      SPD4N505 OVERRIDE                            SPD9N505  TC Control Flags :  GBM IL DSE --- -- ---  Subsch. ID : 370 Det. descr. : SEND A SINGLE COMMAND TO THE DRCU	SEND_DRCU_COMMAND  SCD06505  84040011 <hex> 0 <hex> (Def)	TC	
	ET=+ UT=+00.00.01	SET_OBS_STEP  Command Parameter(s) : OBSERVATION_STEP                      SP03N500  TC Control Flags :  GBM IL DSE --- -- ---  Subsch. ID : 370 Det. descr. : SET OBSERVATION STEP	SET_OBS_STEP  SC003500  0 <hex>	TC	

Mode\_DcuFunc13\_Phot BDA Integrity Check  
 File: H\_COP\_SPI\_DPIC.xls  
 Author: L.Lucas-hp



Step No.	Time	Activity/Remarks	TC/TLM	Display/ Branch	AIT Comment
	ET=+ UT=+00.00.00	SET_BBID  Command Parameter(s) : BUILDING_BLOCK_ID SP01N500  TC Control Flags : GBM IL DSE ---- Subsch. ID : 370 Det. descr. : SET BUILDING BLOCK IDENTIFIER	SET_BBID  SC001500  80000000 <hex>	TC	
	ET=+ UT=+00.00.03	SET_OBS_STEP  Command Parameter(s) : OBSERVATION_STEP SP03N500  TC Control Flags : GBM IL DSE ---- Subsch. ID : 370 Det. descr. : SET OBSERVATION STEP	SET_OBS_STEP  SC003500  0 <hex>	TC	
	ET=+ UT=+00.00.00	SET_BBID  Command Parameter(s) : BUILDING_BLOCK_ID SP01N500  TC Control Flags : GBM IL DSE ---- Subsch. ID : 370 Det. descr. : SET BUILDING BLOCK IDENTIFIER	SET_BBID  SC001500  881e0005 <hex>	TC	
	ET=+ UT=+00.00.02	SET_OBS_STEP  Command Parameter(s) : OBSERVATION_STEP SP03N500  TC Control Flags : GBM IL DSE ---- Subsch. ID : 370 Det. descr. : SET OBSERVATION STEP	SET_OBS_STEP  SC003500  1 <hex>	TC	
	ET=+ UT=+00.00.01	SEND_DRCU_COMMAND  Command Parameter(s) : DRCUCOMMAND SPD4N505 OVERRIDE SPD9N505  TC Control Flags : GBM IL DSE ---- Subsch. ID : 370 Det. descr. : SEND A SINGLE COMMAND TO THE DRCU	SEND_DRCU_COMMAND  SCD06505  843c0010 <hex> 0 <hex> (Def)	TC	
	ET=+ UT=+00.00.00	SEND_DRCU_COMMAND  Command Parameter(s) : DRCUCOMMAND SPD4N505 OVERRIDE SPD9N505  TC Control Flags : GBM IL DSE ---- Subsch. ID : 370 Det. descr. : SEND A SINGLE COMMAND TO THE DRCU	SEND_DRCU_COMMAND  SCD06505  843e0001 <hex> 0 <hex> (Def)	TC	



Mode\_DcuFunc13\_Phot BDA Integrity Check  
 File: H\_COP\_SPI\_DPIC.xls  
 Author: L.Lucas-hp



Step No.	Time	Activity/Remarks	TC/TLM	Display/ Branch	AIT Comment
	ET=+ UT=+00.00.03	SEND_DRCU_COMMAND  SEND_DRCU_COMMAND  Command Parameter(s) : DRCUCOMMAND           SPD4N505 OVERRIDE           SPD9N505  TC Control Flags :  GBM IL DSE --- -- ---  Subsch. ID : 370 Det. descr. : SEND A SINGLE COMMAND TO THE DRCU	SCD06505  843e0000 <hex> 0 <hex> (Def)	TC	
	ET=+ UT=+00.00.00	SEND_DRCU_COMMAND  SEND_DRCU_COMMAND  Command Parameter(s) : DRCUCOMMAND           SPD4N505 OVERRIDE           SPD9N505  TC Control Flags :  GBM IL DSE --- -- ---  Subsch. ID : 370 Det. descr. : SEND A SINGLE COMMAND TO THE DRCU	SCD06505  843c0018 <hex> 0 <hex> (Def)	TC	
	ET=+ UT=+00.00.01	SEND_DRCU_COMMAND  SEND_DRCU_COMMAND  Command Parameter(s) : DRCUCOMMAND           SPD4N505 OVERRIDE           SPD9N505  TC Control Flags :  GBM IL DSE --- -- ---  Subsch. ID : 370 Det. descr. : SEND A SINGLE COMMAND TO THE DRCU	SCD06505  843e0001 <hex> 0 <hex> (Def)	TC	
	ET=+ UT=+00.00.03	SEND_DRCU_COMMAND  SEND_DRCU_COMMAND  Command Parameter(s) : DRCUCOMMAND           SPD4N505 OVERRIDE           SPD9N505  TC Control Flags :  GBM IL DSE --- -- ---  Subsch. ID : 370 Det. descr. : SEND A SINGLE COMMAND TO THE DRCU	SCD06505  843e0000 <hex> 0 <hex> (Def)	TC	
	ET=+ UT=+00.00.01	FLUSH_FIFO  FLUSH_FIFO  Command Parameter(s) : FIFOFLAGS           SPD0N505  TC Control Flags :  GBM IL DSE --- -- ---  Subsch. ID : 370 Det. descr. : FORCE DPU TO READ SCIENCE DATA FROM FIFOS AND FLUSH CONTENTS	SCD01505  1000 <hex>	TC	

Mode\_DcuFunc13\_Phot BDA Integrity Check  
 File: H\_COP\_SPI\_DPIC.xls  
 Author: L.Lucas-hp



Step No.	Time	Activity/Remarks	TC/TLM	Display/ Branch	AIT Comment
	ET=+ UT=+00.00.01	SEND_DRCU_COMMAND  SEND_DRCU_COMMAND  Command Parameter(s) : DRCUCOMMAND           SPD4N505 OVERRIDE        SPD9N505  TC Control Flags :  GBM IL DSE --- -- ---  Subsch. ID : 370 Det. descr. : SEND A SINGLE COMMAND TO THE DRCU	SCD06505  843c0000 <hex> 0 <hex> (Def)	TC	
	ET=+ UT=+00.00.00	SET_OBS_STEP  SET_OBS_STEP  Command Parameter(s) : OBSERVATION_STEP        SP03N500  TC Control Flags :  GBM IL DSE --- -- ---  Subsch. ID : 370 Det. descr. : SET OBSERVATION STEP	SC003500  0 <hex>	TC	
	ET=+ UT=+00.00.01	SET_BBID  SET_BBID  Command Parameter(s) : BUILDING_BLOCK_ID        SP01N500  TC Control Flags :  GBM IL DSE --- -- ---  Subsch. ID : 370 Det. descr. : SET BUILDING BLOCK IDENTIFIER	SC001500  80000000 <hex>	TC	
	ET=+ UT=+00.00.02	SET_OBS_STEP  SET_OBS_STEP  Command Parameter(s) : OBSERVATION_STEP        SP03N500  TC Control Flags :  GBM IL DSE --- -- ---  Subsch. ID : 370 Det. descr. : SET OBSERVATION STEP	SC003500  0 <hex>	TC	
	ET=+ UT=+00.00.00	SET_BBID  SET_BBID  Command Parameter(s) : BUILDING_BLOCK_ID        SP01N500  TC Control Flags :  GBM IL DSE --- -- ---  Subsch. ID : 370 Det. descr. : SET BUILDING BLOCK IDENTIFIER	SC001500  88000005 <hex>	TC	
	ET=+ UT=+00.00.02	SEND_DRCU_COMMAND  SEND_DRCU_COMMAND  Command Parameter(s) : DRCUCOMMAND           SPD4N505 OVERRIDE        SPD9N505  TC Control Flags :  GBM IL DSE --- -- ---  Subsch. ID : 370 Det. descr. : SEND A SINGLE COMMAND TO THE DRCU	SCD06505  843c0000 <hex> 0 <hex> (Def)	TC	

Mode\_DcuFunc13\_Phot BDA Integrity Check  
 File: H\_COP\_SPI\_DPIC.xls  
 Author: L.Lucas-hp



Step No.	Time	Activity/Remarks	TC/TLM	Display/ Branch	AIT Comment	
	ET=+ UT=+00.00.00	SET_OBS_STEP  Command Parameter(s) : OBSERVATION_STEP  TC Control Flags :  Subsch. ID : 370 Det. descr. : SET OBSERVATION STEP	SET_OBS_STEP  SP03N500  1 <hex>  GBM IL DSE ----	SC003500	TC	
	ET=+ UT=+00.00.01	SEND_DRCU_COMMAND  Command Parameter(s) : DRCUCOMMAND OVERRIDE  TC Control Flags :  Subsch. ID : 370 Det. descr. : SEND A SINGLE COMMAND TO THE DRCU	SEND_DRCU_COMMAND  SPD4N505 SPD9N505  843e0001 <hex> 0 <hex> (Def)  GBM IL DSE --- --	SCD06505	TC	
	ET=+ UT=+00.00.10	SEND_DRCU_COMMAND  Command Parameter(s) : DRCUCOMMAND OVERRIDE  TC Control Flags :  Subsch. ID : 370 Det. descr. : SEND A SINGLE COMMAND TO THE DRCU	SEND_DRCU_COMMAND  SPD4N505 SPD9N505  843e0000 <hex> 0 <hex> (Def)  GBM IL DSE --- --	SCD06505	TC	
	ET=+ UT=+00.00.01	FLUSH_FIFO  Command Parameter(s) : FIFOFLAGS  TC Control Flags :  Subsch. ID : 370 Det. descr. : FORCE DPU TO READ SCIENCE DATA FROM FIFOS AND FLUSH CONTENTS	FLUSH_FIFO  SPD0N505  1000 <hex>  GBM IL DSE ----	SCD01505	TC	
	ET=+ UT=+00.00.01	SET_OBS_STEP  Command Parameter(s) : OBSERVATION_STEP  TC Control Flags :  Subsch. ID : 370 Det. descr. : SET OBSERVATION STEP	SET_OBS_STEP  SP03N500  ffff <hex>  GBM IL DSE ----	SC003500	TC	
	ET=+ UT=+00.00.01	SET_OBS_STEP  Command Parameter(s) : OBSERVATION_STEP  TC Control Flags :  Subsch. ID : 370 Det. descr. : SET OBSERVATION STEP	SET_OBS_STEP  SP03N500  0 <hex>  GBM IL DSE ----	SC003500	TC	

Mode\_DcuFunc13\_Phot BDA Integrity Check  
 File: H\_COP\_SPI\_DPIC.xls  
 Author: L.Lucas-hp



Step No.	Time	Activity/Remarks	TC/TLM	Display/ Branch	AIT Comment
	ET=+ UT=+00.00.00	SET_BBID  Command Parameter(s) : BUILDING_BLOCK_ID SP01N500  TC Control Flags : GBM IL DSE ---- Subsch. ID : 370 Det. descr. : SET BUILDING BLOCK IDENTIFIER	SET_BBID  SC001500  80000000 <hex>	TC	
	ET=+ UT=+00.00.02	SET_OBS_STEP  Command Parameter(s) : OBSERVATION_STEP SP03N500  TC Control Flags : GBM IL DSE ---- Subsch. ID : 370 Det. descr. : SET OBSERVATION STEP	SET_OBS_STEP  SC003500  0 <hex>	TC	
	ET=+ UT=+00.00.00	SET_BBID  Command Parameter(s) : BUILDING_BLOCK_ID SP01N500  TC Control Flags : GBM IL DSE ---- Subsch. ID : 370 Det. descr. : SET BUILDING BLOCK IDENTIFIER	SET_BBID  SC001500  88400006 <hex>	TC	
	ET=+ UT=+00.00.02	SET_OBS_STEP  Command Parameter(s) : OBSERVATION_STEP SP03N500  TC Control Flags : GBM IL DSE ---- Subsch. ID : 370 Det. descr. : SET OBSERVATION STEP	SET_OBS_STEP  SC003500  1 <hex>	TC	
	ET=+ UT=+00.00.00	SEND_DRCU_COMMAND  Command Parameter(s) : DRCUCOMMAND SPD4N505 OVERRIDE SPD9N505  TC Control Flags : GBM IL DSE ---- Subsch. ID : 370 Det. descr. : SEND A SINGLE COMMAND TO THE DRCU	SEND_DRCU_COMMAND  SCD06505  84010016 <hex> 0 <hex> (Def)	TC	
	ET=+ UT=+00.00.01	SEND_DRCU_COMMAND  Command Parameter(s) : DRCUCOMMAND SPD4N505 OVERRIDE SPD9N505  TC Control Flags : GBM IL DSE ---- Subsch. ID : 370 Det. descr. : SEND A SINGLE COMMAND TO THE DRCU	SEND_DRCU_COMMAND  SCD06505  84020016 <hex> 0 <hex> (Def)	TC	

Mode\_DcuFunc13\_Phot BDA Integrity Check  
 File: H\_COP\_SPI\_DPIC.xls  
 Author: L.Lucas-hp



Step No.	Time	Activity/Remarks	TC/TLM	Display/ Branch	AIT Comment
	ET=+ UT=+00.00.00	SEND_DRCU_COMMAND  SEND_DRCU_COMMAND  Command Parameter(s) : DRCUCOMMAND SPD4N505 OVERRIDE SPD9N505  TC Control Flags :  GBM IL DSE ---- Subsch. ID : 370 Det. descr. : SEND A SINGLE COMMAND TO THE DRCU	SCD06505  84030016 <hex> 0 <hex> (Def)	TC	
	ET=+ UT=+00.00.01	SEND_DRCU_COMMAND  SEND_DRCU_COMMAND  Command Parameter(s) : DRCUCOMMAND SPD4N505 OVERRIDE SPD9N505  TC Control Flags :  GBM IL DSE ---- Subsch. ID : 370 Det. descr. : SEND A SINGLE COMMAND TO THE DRCU	SCD06505  84040016 <hex> 0 <hex> (Def)	TC	
	ET=+ UT=+00.00.01	SET_OBS_STEP  SET_OBS_STEP  Command Parameter(s) : OBSERVATION_STEP SP03N500  TC Control Flags :  GBM IL DSE ---- Subsch. ID : 370 Det. descr. : SET OBSERVATION STEP	SC003500  0 <hex>	TC	
	ET=+ UT=+00.00.00	SET_BBID  SET_BBID  Command Parameter(s) : BUILDING_BLOCK_ID SP01N500  TC Control Flags :  GBM IL DSE ---- Subsch. ID : 370 Det. descr. : SET BUILDING BLOCK IDENTIFIER	SC001500  80000000 <hex>	TC	
	ET=+ UT=+00.00.03	SET_OBS_STEP  SET_OBS_STEP  Command Parameter(s) : OBSERVATION_STEP SP03N500  TC Control Flags :  GBM IL DSE ---- Subsch. ID : 370 Det. descr. : SET OBSERVATION STEP	SC003500  0 <hex>	TC	
	ET=+ UT=+00.00.00	SET_BBID  SET_BBID  Command Parameter(s) : BUILDING_BLOCK_ID SP01N500  TC Control Flags :  GBM IL DSE ---- Subsch. ID : 370 Det. descr. : SET BUILDING BLOCK IDENTIFIER	SC001500  881e0006 <hex>	TC	

Mode\_DcuFunc13\_Phot BDA Integrity Check  
 File: H\_COP\_SPI\_DPIC.xls  
 Author: L.Lucas-hp



Step No.	Time	Activity/Remarks	TC/TLM	Display/ Branch	AIT Comment
	ET=+ UT=+00.00.02	SET_OBS_STEP  Command Parameter(s) : OBSERVATION_STEP                   SP03N500  TC Control Flags :  GBM IL DSE --- -- ---  Subsch. ID : 370 Det. descr. : SET OBSERVATION STEP	SET_OBS_STEP  SC003500  1 <hex>	TC	
	ET=+ UT=+00.00.01	SEND_DRCU_COMMAND  Command Parameter(s) : DRCUCOMMAND                   SPD4N505 OVERRIDE                        SPD9N505  TC Control Flags :  GBM IL DSE --- -- ---  Subsch. ID : 370 Det. descr. : SEND A SINGLE COMMAND TO THE DRCU	SEND_DRCU_COMMAND  SCD06505  843c0010 <hex> 0 <hex> (Def)	TC	
	ET=+ UT=+00.00.00	SEND_DRCU_COMMAND  Command Parameter(s) : DRCUCOMMAND                   SPD4N505 OVERRIDE                        SPD9N505  TC Control Flags :  GBM IL DSE --- -- ---  Subsch. ID : 370 Det. descr. : SEND A SINGLE COMMAND TO THE DRCU	SEND_DRCU_COMMAND  SCD06505  843e0001 <hex> 0 <hex> (Def)	TC	
	ET=+ UT=+00.00.03	SEND_DRCU_COMMAND  Command Parameter(s) : DRCUCOMMAND                   SPD4N505 OVERRIDE                        SPD9N505  TC Control Flags :  GBM IL DSE --- -- ---  Subsch. ID : 370 Det. descr. : SEND A SINGLE COMMAND TO THE DRCU	SEND_DRCU_COMMAND  SCD06505  843e0000 <hex> 0 <hex> (Def)	TC	
	ET=+ UT=+00.00.00	SEND_DRCU_COMMAND  Command Parameter(s) : DRCUCOMMAND                   SPD4N505 OVERRIDE                        SPD9N505  TC Control Flags :  GBM IL DSE --- -- ---  Subsch. ID : 370 Det. descr. : SEND A SINGLE COMMAND TO THE DRCU	SEND_DRCU_COMMAND  SCD06505  843c0018 <hex> 0 <hex> (Def)	TC	
	ET=+ UT=+00.00.01	SEND_DRCU_COMMAND  Command Parameter(s) : DRCUCOMMAND                   SPD4N505 OVERRIDE                        SPD9N505  TC Control Flags :  GBM IL DSE --- -- ---  Subsch. ID : 370 Det. descr. : SEND A SINGLE COMMAND TO THE DRCU	SEND_DRCU_COMMAND  SCD06505  843e0001 <hex> 0 <hex> (Def)	TC	

Mode\_DcuFunc13\_Phot BDA Integrity Check  
 File: H\_COP\_SPI\_DPIC.xls  
 Author: L.Lucas-hp



Step No.	Time	Activity/Remarks	TC/TLM	Display/ Branch	AIT Comment
	ET=+ UT=+00.00.03	SEND_DRCU_COMMAND  SEND_DRCU_COMMAND  Command Parameter(s) : DRCUCOMMAND SPD4N505 OVERRIDE SPD9N505  TC Control Flags :  GBM IL DSE --- --  Subsch. ID : 370 Det. descr. : SEND A SINGLE COMMAND TO THE DRCU	SCD06505  843e0000 <hex> 0 <hex> (Def)	TC	
	ET=+ UT=+00.00.01	FLUSH_FIFO  FLUSH_FIFO  Command Parameter(s) : FIFOFLAGS SPD0N505  TC Control Flags :  GBM IL DSE --- --  Subsch. ID : 370 Det. descr. : FORCE DPU TO READ SCIENCE DATA FROM FIFOS AND FLUSH CONTENTS	SCD01505  1000 <hex>	TC	
	ET=+ UT=+00.00.01	SEND_DRCU_COMMAND  SEND_DRCU_COMMAND  Command Parameter(s) : DRCUCOMMAND SPD4N505 OVERRIDE SPD9N505  TC Control Flags :  GBM IL DSE --- --  Subsch. ID : 370 Det. descr. : SEND A SINGLE COMMAND TO THE DRCU	SCD06505  843c0000 <hex> 0 <hex> (Def)	TC	
	ET=+ UT=+00.00.00	SET_OBS_STEP  SET_OBS_STEP  Command Parameter(s) : OBSERVATION_STEP SP03N500  TC Control Flags :  GBM IL DSE --- --  Subsch. ID : 370 Det. descr. : SET OBSERVATION STEP	SC003500  0 <hex>	TC	
	ET=+ UT=+00.00.01	SET_BBID  SET_BBID  Command Parameter(s) : BUILDING_BLOCK_ID SP01N500  TC Control Flags :  GBM IL DSE --- --  Subsch. ID : 370 Det. descr. : SET BUILDING BLOCK IDENTIFIER	SC001500  80000000 <hex>	TC	
	ET=+ UT=+00.00.02	SET_OBS_STEP  SET_OBS_STEP  Command Parameter(s) : OBSERVATION_STEP SP03N500  TC Control Flags :  GBM IL DSE --- --  Subsch. ID : 370 Det. descr. : SET OBSERVATION STEP	SC003500  0 <hex>	TC	

Mode\_DcuFunc13\_Phot BDA Integrity Check  
 File: H\_COP\_SPI\_DPIC.xls  
 Author: L.Lucas-hp



Step No.	Time	Activity/Remarks	TC/TLM	Display/ Branch	AIT Comment	
	ET=+ UT=+00.00.00	SET_BBID  Command Parameter(s) : BUILDING_BLOCK_ID  TC Control Flags :  Subsch. ID : 370 Det. descr. : SET BUILDING BLOCK IDENTIFIER	SET_BBID  SP01N500  GBM IL DSE ----  88000006 <hex>	SC001500	TC	
	ET=+ UT=+00.00.02	SEND_DRCU_COMMAND  Command Parameter(s) : DRCUCOMMAND OVERRIDE  TC Control Flags :  Subsch. ID : 370 Det. descr. : SEND A SINGLE COMMAND TO THE DRCU	SEND_DRCU_COMMAND  SPD4N505 SPD9N505  GBM IL DSE --- --  843c0000 <hex> 0 <hex> (Def)	SCD06505	TC	
	ET=+ UT=+00.00.00	SET_OBS_STEP  Command Parameter(s) : OBSERVATION_STEP  TC Control Flags :  Subsch. ID : 370 Det. descr. : SET OBSERVATION STEP	SET_OBS_STEP  SP03N500  GBM IL DSE --- --  1 <hex>	SC003500	TC	
	ET=+ UT=+00.00.01	SEND_DRCU_COMMAND  Command Parameter(s) : DRCUCOMMAND OVERRIDE  TC Control Flags :  Subsch. ID : 370 Det. descr. : SEND A SINGLE COMMAND TO THE DRCU	SEND_DRCU_COMMAND  SPD4N505 SPD9N505  GBM IL DSE --- --  843e0001 <hex> 0 <hex> (Def)	SCD06505	TC	
	ET=+ UT=+00.00.10	SEND_DRCU_COMMAND  Command Parameter(s) : DRCUCOMMAND OVERRIDE  TC Control Flags :  Subsch. ID : 370 Det. descr. : SEND A SINGLE COMMAND TO THE DRCU	SEND_DRCU_COMMAND  SPD4N505 SPD9N505  GBM IL DSE --- --  843e0000 <hex> 0 <hex> (Def)	SCD06505	TC	
	ET=+ UT=+00.00.01	FLUSH_FIFO  Command Parameter(s) : FIFOFLAGS  TC Control Flags :  Subsch. ID : 370 Det. descr. : FORCE DPU TO READ SCIENCE DATA FROM FIFOS AND FLUSH CONTENTS	FLUSH_FIFO  SPD0N505  GBM IL DSE --- --  1000 <hex>	SCD01505	TC	



Mode\_DcuFunc13\_Phot BDA Integrity Check  
 File: H\_COP\_SPI\_DPIC.xls  
 Author: L.Lucas-hp



Step No.	Time	Activity/Remarks	TC/TLM	Display/ Branch	AIT Comment
	ET=+ UT=+00.00.01	SET_OBS_STEP  Command Parameter(s) : OBSERVATION_STEP SP03N500  TC Control Flags : GBM IL DSE ---- Subsch. ID : 370 Det. descr. : SET OBSERVATION STEP	SET_OBS_STEP  SC003500  ffff <hex>	TC	
	ET=+ UT=+00.00.01	SET_OBS_STEP  Command Parameter(s) : OBSERVATION_STEP SP03N500  TC Control Flags : GBM IL DSE ---- Subsch. ID : 370 Det. descr. : SET OBSERVATION STEP	SET_OBS_STEP  SC003500  0 <hex>	TC	
	ET=+ UT=+00.00.00	SET_BBID  Command Parameter(s) : BUILDING_BLOCK_ID SP01N500  TC Control Flags : GBM IL DSE ---- Subsch. ID : 370 Det. descr. : SET BUILDING BLOCK IDENTIFIER	SET_BBID  SC001500  80000000 <hex>	TC	
	ET=+ UT=+00.00.02	SET_OBS_STEP  Command Parameter(s) : OBSERVATION_STEP SP03N500  TC Control Flags : GBM IL DSE ---- Subsch. ID : 370 Det. descr. : SET OBSERVATION STEP	SET_OBS_STEP  SC003500  0 <hex>	TC	
	ET=+ UT=+00.00.00	SET_BBID  Command Parameter(s) : BUILDING_BLOCK_ID SP01N500  TC Control Flags : GBM IL DSE ---- Subsch. ID : 370 Det. descr. : SET BUILDING BLOCK IDENTIFIER	SET_BBID  SC001500  88400007 <hex>	TC	
	ET=+ UT=+00.00.02	SET_OBS_STEP  Command Parameter(s) : OBSERVATION_STEP SP03N500  TC Control Flags : GBM IL DSE ---- Subsch. ID : 370 Det. descr. : SET OBSERVATION STEP	SET_OBS_STEP  SC003500  1 <hex>	TC	

Mode\_DcuFunc13\_Phot BDA Integrity Check  
 File: H\_COP\_SPI\_DPIC.xls  
 Author: L.Lucas-hp



Step No.	Time	Activity/Remarks	TC/TLM	Display/ Branch	AIT Comment
	ET=+ UT=+00.00.00	SEND_DRCU_COMMAND  SEND_DRCU_COMMAND  Command Parameter(s) : DRCUCOMMAND           SPD4N505 OVERRIDE        SPD9N505  TC Control Flags :  GBM IL DSE --- -- ---  Subsch. ID : 370 Det. descr. : SEND A SINGLE COMMAND TO THE DRCU	SCD06505  84010019 <hex> 0 <hex> (Def)	TC	
	ET=+ UT=+00.00.01	SEND_DRCU_COMMAND  SEND_DRCU_COMMAND  Command Parameter(s) : DRCUCOMMAND           SPD4N505 OVERRIDE        SPD9N505  TC Control Flags :  GBM IL DSE --- -- ---  Subsch. ID : 370 Det. descr. : SEND A SINGLE COMMAND TO THE DRCU	SCD06505  84020019 <hex> 0 <hex> (Def)	TC	
	ET=+ UT=+00.00.00	SEND_DRCU_COMMAND  SEND_DRCU_COMMAND  Command Parameter(s) : DRCUCOMMAND           SPD4N505 OVERRIDE        SPD9N505  TC Control Flags :  GBM IL DSE --- -- ---  Subsch. ID : 370 Det. descr. : SEND A SINGLE COMMAND TO THE DRCU	SCD06505  84030019 <hex> 0 <hex> (Def)	TC	
	ET=+ UT=+00.00.01	SEND_DRCU_COMMAND  SEND_DRCU_COMMAND  Command Parameter(s) : DRCUCOMMAND           SPD4N505 OVERRIDE        SPD9N505  TC Control Flags :  GBM IL DSE --- -- ---  Subsch. ID : 370 Det. descr. : SEND A SINGLE COMMAND TO THE DRCU	SCD06505  84040019 <hex> 0 <hex> (Def)	TC	
	ET=+ UT=+00.00.01	SET_OBS_STEP  SET_OBS_STEP  Command Parameter(s) : OBSERVATION_STEP        SP03N500  TC Control Flags :  GBM IL DSE --- -- ---  Subsch. ID : 370 Det. descr. : SET OBSERVATION STEP	SC003500  0 <hex>	TC	
	ET=+ UT=+00.00.00	SET_BBID  SET_BBID  Command Parameter(s) : BUILDING_BLOCK_ID        SP01N500  TC Control Flags :  GBM IL DSE --- -- ---  Subsch. ID : 370 Det. descr. : SET BUILDING BLOCK IDENTIFIER	SC001500  80000000 <hex>	TC	

Mode\_DcuFunc13\_Phot BDA Integrity Check  
 File: H\_COP\_SPI\_DPIC.xls  
 Author: L.Lucas-hp



Step No.	Time	Activity/Remarks	TC/TLM	Display/ Branch	AIT Comment
	ET=+ UT=+00.00.03	SET_OBS_STEP  Command Parameter(s) : OBSERVATION_STEP SP03N500  TC Control Flags : GBM IL DSE ---- Subsch. ID : 370 Det. descr. : SET OBSERVATION STEP	SET_OBS_STEP  SC003500  0 <hex>	TC	
	ET=+ UT=+00.00.00	SET_BBID  Command Parameter(s) : BUILDING_BLOCK_ID SP01N500  TC Control Flags : GBM IL DSE ---- Subsch. ID : 370 Det. descr. : SET BUILDING BLOCK IDENTIFIER	SET_BBID  SC001500  881e0007 <hex>	TC	
	ET=+ UT=+00.00.02	SET_OBS_STEP  Command Parameter(s) : OBSERVATION_STEP SP03N500  TC Control Flags : GBM IL DSE ---- Subsch. ID : 370 Det. descr. : SET OBSERVATION STEP	SET_OBS_STEP  SC003500  1 <hex>	TC	
	ET=+ UT=+00.00.01	SEND_DRCU_COMMAND  Command Parameter(s) : DRCUCOMMAND SPD4N505 OVERRIDE SPD9N505  TC Control Flags : GBM IL DSE ---- Subsch. ID : 370 Det. descr. : SEND A SINGLE COMMAND TO THE DRCU	SEND_DRCU_COMMAND  SCD06505  843c0010 <hex> 0 <hex> (Def)	TC	
	ET=+ UT=+00.00.00	SEND_DRCU_COMMAND  Command Parameter(s) : DRCUCOMMAND SPD4N505 OVERRIDE SPD9N505  TC Control Flags : GBM IL DSE ---- Subsch. ID : 370 Det. descr. : SEND A SINGLE COMMAND TO THE DRCU	SEND_DRCU_COMMAND  SCD06505  843e0001 <hex> 0 <hex> (Def)	TC	
	ET=+ UT=+00.00.03	SEND_DRCU_COMMAND  Command Parameter(s) : DRCUCOMMAND SPD4N505 OVERRIDE SPD9N505  TC Control Flags : GBM IL DSE ---- Subsch. ID : 370 Det. descr. : SEND A SINGLE COMMAND TO THE DRCU	SEND_DRCU_COMMAND  SCD06505  843e0000 <hex> 0 <hex> (Def)	TC	

Mode\_DcuFunc13\_Phot BDA Integrity Check  
 File: H\_COP\_SPI\_DPIC.xls  
 Author: L.Lucas-hp



Step No.	Time	Activity/Remarks	TC/TLM	Display/ Branch	AIT Comment
	ET=+ UT=+00.00.00	SEND_DRCU_COMMAND  SEND_DRCU_COMMAND  Command Parameter(s) : DRCUCOMMAND           SPD4N505 OVERRIDE        SPD9N505  TC Control Flags :  GBM IL DSE ---- --  Subsch. ID : 370 Det. descr. : SEND A SINGLE COMMAND TO THE DRCU	SCD06505  843c0018 <hex> 0 <hex> (Def)	TC	
	ET=+ UT=+00.00.01	SEND_DRCU_COMMAND  SEND_DRCU_COMMAND  Command Parameter(s) : DRCUCOMMAND           SPD4N505 OVERRIDE        SPD9N505  TC Control Flags :  GBM IL DSE ---- --  Subsch. ID : 370 Det. descr. : SEND A SINGLE COMMAND TO THE DRCU	SCD06505  843e0001 <hex> 0 <hex> (Def)	TC	
	ET=+ UT=+00.00.03	SEND_DRCU_COMMAND  SEND_DRCU_COMMAND  Command Parameter(s) : DRCUCOMMAND           SPD4N505 OVERRIDE        SPD9N505  TC Control Flags :  GBM IL DSE ---- --  Subsch. ID : 370 Det. descr. : SEND A SINGLE COMMAND TO THE DRCU	SCD06505  843e0000 <hex> 0 <hex> (Def)	TC	
	ET=+ UT=+00.00.01	FLUSH_FIFO  FLUSH_FIFO  Command Parameter(s) : FIFOFLAGS            SPD0N505  TC Control Flags :  GBM IL DSE ---- --  Subsch. ID : 370 Det. descr. : FORCE DPU TO READ SCIENCE DATA FROM FIFOS AND FLUSH CONTENTS	SCD01505  1000 <hex>	TC	
	ET=+ UT=+00.00.01	SEND_DRCU_COMMAND  SEND_DRCU_COMMAND  Command Parameter(s) : DRCUCOMMAND           SPD4N505 OVERRIDE        SPD9N505  TC Control Flags :  GBM IL DSE ---- --  Subsch. ID : 370 Det. descr. : SEND A SINGLE COMMAND TO THE DRCU	SCD06505  843c0000 <hex> 0 <hex> (Def)	TC	
	ET=+ UT=+00.00.00	SET_OBS_STEP  SET_OBS_STEP  Command Parameter(s) : OBSERVATION_STEP        SP03N500  TC Control Flags :  GBM IL DSE ---- --  Subsch. ID : 370 Det. descr. : SET OBSERVATION STEP	SC003500  0 <hex>	TC	

Mode\_DcuFunc13\_Phot BDA Integrity Check  
 File: H\_COP\_SPI\_DPIC.xls  
 Author: L.Lucas-hp



Step No.	Time	Activity/Remarks	TC/TLM	Display/ Branch	AIT Comment
	ET=+ UT=+00.00.01	SET_BBID  Command Parameter(s) : BUILDING_BLOCK_ID SP01N500  TC Control Flags : GBM IL DSE ---- Subsch. ID : 370 Det. descr. : SET BUILDING BLOCK IDENTIFIER	SET_BBID  SC001500  80000000 <hex>	TC	
	ET=+ UT=+00.00.02	SET_OBS_STEP  Command Parameter(s) : OBSERVATION_STEP SP03N500  TC Control Flags : GBM IL DSE ---- Subsch. ID : 370 Det. descr. : SET OBSERVATION STEP	SET_OBS_STEP  SC003500  0 <hex>	TC	
	ET=+ UT=+00.00.00	SET_BBID  Command Parameter(s) : BUILDING_BLOCK_ID SP01N500  TC Control Flags : GBM IL DSE ---- Subsch. ID : 370 Det. descr. : SET BUILDING BLOCK IDENTIFIER	SET_BBID  SC001500  88000007 <hex>	TC	
	ET=+ UT=+00.00.02	SEND_DRCU_COMMAND  Command Parameter(s) : DRCUCOMMAND SPD4N505 OVERRIDE SPD9N505  TC Control Flags : GBM IL DSE ---- Subsch. ID : 370 Det. descr. : SEND A SINGLE COMMAND TO THE DRCU	SEND_DRCU_COMMAND  SCD06505  843c0000 <hex> 0 <hex> (Def)	TC	
	ET=+ UT=+00.00.00	SET_OBS_STEP  Command Parameter(s) : OBSERVATION_STEP SP03N500  TC Control Flags : GBM IL DSE ---- Subsch. ID : 370 Det. descr. : SET OBSERVATION STEP	SET_OBS_STEP  SC003500  1 <hex>	TC	
	ET=+ UT=+00.00.01	SEND_DRCU_COMMAND  Command Parameter(s) : DRCUCOMMAND SPD4N505 OVERRIDE SPD9N505  TC Control Flags : GBM IL DSE ---- Subsch. ID : 370 Det. descr. : SEND A SINGLE COMMAND TO THE DRCU	SEND_DRCU_COMMAND  SCD06505  843e0001 <hex> 0 <hex> (Def)	TC	

Mode\_DcuFunc13\_Phot BDA Integrity Check  
 File: H\_COP\_SPI\_DPIC.xls  
 Author: L.Lucas-hp



Step No.	Time	Activity/Remarks	TC/TLM	Display/ Branch	AIT Comment
	ET=+ UT=+00.00.10	SEND_DRCU_COMMAND  SEND_DRCU_COMMAND  Command Parameter(s) : DRCUCOMMAND SPD4N505 OVERRIDE SPD9N505  TC Control Flags :  GBM IL DSE --- -- ---  Subsch. ID : 370 Det. descr. : SEND A SINGLE COMMAND TO THE DRCU	SCD06505  843e0000 <hex> 0 <hex> (Def)	TC	
	ET=+ UT=+00.00.01	FLUSH_FIFO  FLUSH_FIFO  Command Parameter(s) : FIFOFLLAGS SPD0N505  TC Control Flags :  GBM IL DSE --- -- ---  Subsch. ID : 370 Det. descr. : FORCE DPU TO READ SCIENCE DATA FROM FIFOS AND FLUSH CONTENTS	SCD01505  1000 <hex>	TC	
	ET=+ UT=+00.00.01	SET_OBS_STEP  SET_OBS_STEP  Command Parameter(s) : OBSERVATION_STEP SP03N500  TC Control Flags :  GBM IL DSE --- -- ---  Subsch. ID : 370 Det. descr. : SET OBSERVATION STEP	SC003500  ffff <hex>	TC	
	ET=+ UT=+00.00.01	SET_OBS_STEP  SET_OBS_STEP  Command Parameter(s) : OBSERVATION_STEP SP03N500  TC Control Flags :  GBM IL DSE --- -- ---  Subsch. ID : 370 Det. descr. : SET OBSERVATION STEP	SC003500  0 <hex>	TC	
	ET=+ UT=+00.00.00	SET_BBID  SET_BBID  Command Parameter(s) : BUILDING_BLOCK_ID SP01N500  TC Control Flags :  GBM IL DSE --- -- ---  Subsch. ID : 370 Det. descr. : SET BUILDING BLOCK IDENTIFIER	SC001500  80000000 <hex>	TC	
	ET=+ UT=+00.00.02	SET_OBS_STEP  SET_OBS_STEP  Command Parameter(s) : OBSERVATION_STEP SP03N500  TC Control Flags :  GBM IL DSE --- -- ---  Subsch. ID : 370 Det. descr. : SET OBSERVATION STEP	SC003500  0 <hex>	TC	

Mode\_DcuFunc13\_Phot BDA Integrity Check  
 File: H\_COP\_SPI\_DPIC.xls  
 Author: L.Lucas-hp



Step No.	Time	Activity/Remarks	TC/TLM	Display/ Branch	AIT Comment
	ET=+ UT=+00.00.00	SET_BBID  SET_BBID  Command Parameter(s) : BUILDING_BLOCK_ID SP01N500  TC Control Flags : GBM IL DSE ---- Subsch. ID : 370 Det. descr. : SET BUILDING BLOCK IDENTIFIER	SC001500  88400008 <hex>	TC	
	ET=+ UT=+00.00.02	SET_OBS_STEP  SET_OBS_STEP  Command Parameter(s) : OBSERVATION_STEP SP03N500  TC Control Flags : GBM IL DSE ---- Subsch. ID : 370 Det. descr. : SET OBSERVATION STEP	SC003500  1 <hex>	TC	
	ET=+ UT=+00.00.00	SEND_DRCU_COMMAND  SEND_DRCU_COMMAND  Command Parameter(s) : DRCUCOMMAND SPD4N505 OVERRIDE SPD9N505  TC Control Flags : GBM IL DSE ---- Subsch. ID : 370 Det. descr. : SEND A SINGLE COMMAND TO THE DRCU	SCD06505  84010032 <hex> 0 <hex> (Def)	TC	
	ET=+ UT=+00.00.01	SEND_DRCU_COMMAND  SEND_DRCU_COMMAND  Command Parameter(s) : DRCUCOMMAND SPD4N505 OVERRIDE SPD9N505  TC Control Flags : GBM IL DSE ---- Subsch. ID : 370 Det. descr. : SEND A SINGLE COMMAND TO THE DRCU	SCD06505  84020032 <hex> 0 <hex> (Def)	TC	
	ET=+ UT=+00.00.00	SEND_DRCU_COMMAND  SEND_DRCU_COMMAND  Command Parameter(s) : DRCUCOMMAND SPD4N505 OVERRIDE SPD9N505  TC Control Flags : GBM IL DSE ---- Subsch. ID : 370 Det. descr. : SEND A SINGLE COMMAND TO THE DRCU	SCD06505  84030032 <hex> 0 <hex> (Def)	TC	
	ET=+ UT=+00.00.01	SEND_DRCU_COMMAND  SEND_DRCU_COMMAND  Command Parameter(s) : DRCUCOMMAND SPD4N505 OVERRIDE SPD9N505  TC Control Flags : GBM IL DSE ---- Subsch. ID : 370 Det. descr. : SEND A SINGLE COMMAND TO THE DRCU	SCD06505  84040032 <hex> 0 <hex> (Def)	TC	

Mode\_DcuFunc13\_Phot BDA Integrity Check  
 File: H\_COP\_SPI\_DPIC.xls  
 Author: L.Lucas-hp



Step No.	Time	Activity/Remarks	TC/TLM	Display/ Branch	AIT Comment
	ET=+ UT=+00.00.01	SET_OBS_STEP  Command Parameter(s) : OBSERVATION_STEP SP03N500  TC Control Flags : GBM IL DSE ---- Subsch. ID : 370 Det. descr. : SET OBSERVATION STEP	SET_OBS_STEP  SC003500  0 <hex>	TC	
	ET=+ UT=+00.00.00	SET_BBID  Command Parameter(s) : BUILDING_BLOCK_ID SP01N500  TC Control Flags : GBM IL DSE ---- Subsch. ID : 370 Det. descr. : SET BUILDING BLOCK IDENTIFIER	SET_BBID  SC001500  80000000 <hex>	TC	
	ET=+ UT=+00.00.03	SET_OBS_STEP  Command Parameter(s) : OBSERVATION_STEP SP03N500  TC Control Flags : GBM IL DSE ---- Subsch. ID : 370 Det. descr. : SET OBSERVATION STEP	SET_OBS_STEP  SC003500  0 <hex>	TC	
	ET=+ UT=+00.00.00	SET_BBID  Command Parameter(s) : BUILDING_BLOCK_ID SP01N500  TC Control Flags : GBM IL DSE ---- Subsch. ID : 370 Det. descr. : SET BUILDING BLOCK IDENTIFIER	SET_BBID  SC001500  881e0008 <hex>	TC	
	ET=+ UT=+00.00.02	SET_OBS_STEP  Command Parameter(s) : OBSERVATION_STEP SP03N500  TC Control Flags : GBM IL DSE ---- Subsch. ID : 370 Det. descr. : SET OBSERVATION STEP	SET_OBS_STEP  SC003500  1 <hex>	TC	
	ET=+ UT=+00.00.01	SEND_DRCU_COMMAND  Command Parameter(s) : DRCUCOMMAND SPD4N505 OVERRIDE SPD9N505  TC Control Flags : GBM IL DSE ---- Subsch. ID : 370 Det. descr. : SEND A SINGLE COMMAND TO THE DRCU	SEND_DRCU_COMMAND  SCD06505  843c0010 <hex> 0 <hex> (Def)	TC	



Mode\_DcuFunc13\_Phot BDA Integrity Check  
 File: H\_COP\_SPI\_DPIC.xls  
 Author: L.Lucas-hp



Step No.	Time	Activity/Remarks	TC/TLM	Display/ Branch	AIT Comment
	ET=+ UT=+00.00.00	SEND_DRCU_COMMAND  SEND_DRCU_COMMAND  Command Parameter(s) : DRCUCOMMAND           SPD4N505 OVERRIDE        SPD9N505  TC Control Flags :  GBM IL DSE --- -- ---  Subsch. ID : 370 Det. descr. : SEND A SINGLE COMMAND TO THE DRCU	SCD06505  843e0001 <hex> 0 <hex> (Def)	TC	
	ET=+ UT=+00.00.03	SEND_DRCU_COMMAND  SEND_DRCU_COMMAND  Command Parameter(s) : DRCUCOMMAND           SPD4N505 OVERRIDE        SPD9N505  TC Control Flags :  GBM IL DSE --- -- ---  Subsch. ID : 370 Det. descr. : SEND A SINGLE COMMAND TO THE DRCU	SCD06505  843e0000 <hex> 0 <hex> (Def)	TC	
	ET=+ UT=+00.00.00	SEND_DRCU_COMMAND  SEND_DRCU_COMMAND  Command Parameter(s) : DRCUCOMMAND           SPD4N505 OVERRIDE        SPD9N505  TC Control Flags :  GBM IL DSE --- -- ---  Subsch. ID : 370 Det. descr. : SEND A SINGLE COMMAND TO THE DRCU	SCD06505  843c0018 <hex> 0 <hex> (Def)	TC	
	ET=+ UT=+00.00.01	SEND_DRCU_COMMAND  SEND_DRCU_COMMAND  Command Parameter(s) : DRCUCOMMAND           SPD4N505 OVERRIDE        SPD9N505  TC Control Flags :  GBM IL DSE --- -- ---  Subsch. ID : 370 Det. descr. : SEND A SINGLE COMMAND TO THE DRCU	SCD06505  843e0001 <hex> 0 <hex> (Def)	TC	
	ET=+ UT=+00.00.03	SEND_DRCU_COMMAND  SEND_DRCU_COMMAND  Command Parameter(s) : DRCUCOMMAND           SPD4N505 OVERRIDE        SPD9N505  TC Control Flags :  GBM IL DSE --- -- ---  Subsch. ID : 370 Det. descr. : SEND A SINGLE COMMAND TO THE DRCU	SCD06505  843e0000 <hex> 0 <hex> (Def)	TC	



Mode\_DcuFunc13\_Phot BDA Integrity Check  
 File: H\_COP\_SPI\_DPIC.xls  
 Author: L.Lucas-hp



Step No.	Time	Activity/Remarks	TC/TLM	Display/ Branch	AIT Comment
	ET=+ UT=+00.00.02	SEND_DRCU_COMMAND SEND_DRCU_COMMAND  Command Parameter(s) : DRCUCOMMAND SPD4N505 OVERRIDE SPD9N505  TC Control Flags :  Subsch. ID : 370 Det. descr. : SEND A SINGLE COMMAND TO THE DRCU	SCD06505  843c0000 <hex> 0 <hex> (Def)	TC	
	ET=+ UT=+00.00.00	SET_OBS_STEP SET_OBS_STEP  Command Parameter(s) : OBSERVATION_STEP SP03N500  TC Control Flags :  Subsch. ID : 370 Det. descr. : SET OBSERVATION STEP	SC003500  1 <hex>	TC	
	ET=+ UT=+00.00.01	SEND_DRCU_COMMAND SEND_DRCU_COMMAND  Command Parameter(s) : DRCUCOMMAND SPD4N505 OVERRIDE SPD9N505  TC Control Flags :  Subsch. ID : 370 Det. descr. : SEND A SINGLE COMMAND TO THE DRCU	SCD06505  843e0001 <hex> 0 <hex> (Def)	TC	
	ET=+ UT=+00.00.10	SEND_DRCU_COMMAND SEND_DRCU_COMMAND  Command Parameter(s) : DRCUCOMMAND SPD4N505 OVERRIDE SPD9N505  TC Control Flags :  Subsch. ID : 370 Det. descr. : SEND A SINGLE COMMAND TO THE DRCU	SCD06505  843e0000 <hex> 0 <hex> (Def)	TC	
	ET=+ UT=+00.00.01	FLUSH_FIFO FLUSH_FIFO  Command Parameter(s) : FIFOFLAGS SPD0N505  TC Control Flags :  Subsch. ID : 370 Det. descr. : FORCE DPU TO READ SCIENCE DATA FROM FIFOS AND FLUSH CONTENTS	SCD01505  1000 <hex>	TC	
	ET=+ UT=+00.00.01	SET_OBS_STEP SET_OBS_STEP  Command Parameter(s) : OBSERVATION_STEP SP03N500  TC Control Flags :  Subsch. ID : 370 Det. descr. : SET OBSERVATION STEP	SC003500  fff <hex>	TC	

Mode\_DcuFunc13\_Phot BDA Integrity Check  
 File: H\_COP\_SPI\_DPIC.xls  
 Author: L.Lucas-hp



Step No.	Time	Activity/Remarks	TC/TLM	Display/ Branch	AIT Comment
	ET=+ UT=+00.00.01	SET_OBS_STEP  Command Parameter(s) : OBSERVATION_STEP SP03N500  TC Control Flags : GBM IL DSE ---- Subsch. ID : 370 Det. descr. : SET OBSERVATION STEP	SET_OBS_STEP  SC003500  0 <hex>	TC	
	ET=+ UT=+00.00.00	SET_BBID  Command Parameter(s) : BUILDING_BLOCK_ID SP01N500  TC Control Flags : GBM IL DSE ---- Subsch. ID : 370 Det. descr. : SET BUILDING BLOCK IDENTIFIER	SET_BBID  SC001500  80000000 <hex>	TC	
	ET=+ UT=+00.00.02	SET_OBS_STEP  Command Parameter(s) : OBSERVATION_STEP SP03N500  TC Control Flags : GBM IL DSE ---- Subsch. ID : 370 Det. descr. : SET OBSERVATION STEP	SET_OBS_STEP  SC003500  0 <hex>	TC	
	ET=+ UT=+00.00.00	SET_BBID  Command Parameter(s) : BUILDING_BLOCK_ID SP01N500  TC Control Flags : GBM IL DSE ---- Subsch. ID : 370 Det. descr. : SET BUILDING BLOCK IDENTIFIER	SET_BBID  SC001500  88400009 <hex>	TC	
	ET=+ UT=+00.00.02	SET_OBS_STEP  Command Parameter(s) : OBSERVATION_STEP SP03N500  TC Control Flags : GBM IL DSE ---- Subsch. ID : 370 Det. descr. : SET OBSERVATION STEP	SET_OBS_STEP  SC003500  1 <hex>	TC	
	ET=+ UT=+00.00.00	SEND_DRCU_COMMAND  Command Parameter(s) : DRCUCOMMAND SPD4N505 OVERRIDE SPD9N505  TC Control Flags : GBM IL DSE ---- Subsch. ID : 370 Det. descr. : SEND A SINGLE COMMAND TO THE DRCU	SEND_DRCU_COMMAND  SCD06505  8401003c <hex> 0 <hex> (Def)	TC	

Mode\_DcuFunc13\_Phot BDA Integrity Check  
 File: H\_COP\_SPI\_DPIC.xls  
 Author: L.Lucas-hp



Step No.	Time	Activity/Remarks	TC/TLM	Display/ Branch	AIT Comment
	ET=+ UT=+00.00.01	SEND_DRCU_COMMAND  SEND_DRCU_COMMAND  Command Parameter(s) : DRCUCOMMAND           SPD4N505 OVERRIDE        SPD9N505  TC Control Flags :  GBM IL DSE --- -- ---  Subsch. ID : 370 Det. descr. : SEND A SINGLE COMMAND TO THE DRCU	SCD06505  8402003c <hex> 0 <hex> (Def)	TC	
	ET=+ UT=+00.00.00	SEND_DRCU_COMMAND  SEND_DRCU_COMMAND  Command Parameter(s) : DRCUCOMMAND           SPD4N505 OVERRIDE        SPD9N505  TC Control Flags :  GBM IL DSE --- -- ---  Subsch. ID : 370 Det. descr. : SEND A SINGLE COMMAND TO THE DRCU	SCD06505  8403003c <hex> 0 <hex> (Def)	TC	
	ET=+ UT=+00.00.01	SEND_DRCU_COMMAND  SEND_DRCU_COMMAND  Command Parameter(s) : DRCUCOMMAND           SPD4N505 OVERRIDE        SPD9N505  TC Control Flags :  GBM IL DSE --- -- ---  Subsch. ID : 370 Det. descr. : SEND A SINGLE COMMAND TO THE DRCU	SCD06505  8404003c <hex> 0 <hex> (Def)	TC	
	ET=+ UT=+00.00.01	SET_OBS_STEP  SET_OBS_STEP  Command Parameter(s) : OBSERVATION_STEP        SP03N500  TC Control Flags :  GBM IL DSE --- -- ---  Subsch. ID : 370 Det. descr. : SET OBSERVATION STEP	SC003500  0 <hex>	TC	
	ET=+ UT=+00.00.00	SET_BBID  SET_BBID  Command Parameter(s) : BUILDING_BLOCK_ID        SP01N500  TC Control Flags :  GBM IL DSE --- -- ---  Subsch. ID : 370 Det. descr. : SET BUILDING BLOCK IDENTIFIER	SC001500  80000000 <hex>	TC	
	ET=+ UT=+00.00.03	SET_OBS_STEP  SET_OBS_STEP  Command Parameter(s) : OBSERVATION_STEP        SP03N500  TC Control Flags :  GBM IL DSE --- -- ---  Subsch. ID : 370 Det. descr. : SET OBSERVATION STEP	SC003500  0 <hex>	TC	

Mode\_DcuFunc13\_Phot BDA Integrity Check  
 File: H\_COP\_SPI\_DPIC.xls  
 Author: L.Lucas-hp



Step No.	Time	Activity/Remarks	TC/TLM	Display/ Branch	AIT Comment
	ET=+ UT=+00.00.00	SET_BBID  SET_BBID  Command Parameter(s) : BUILDING_BLOCK_ID      SP01N500  TC Control Flags :  GBM IL DSE ---- Subsch. ID : 370 Det. descr. : SET BUILDING BLOCK IDENTIFIER	SC001500  881e0009 <hex>	TC	
	ET=+ UT=+00.00.02	SET_OBS_STEP  SET_OBS_STEP  Command Parameter(s) : OBSERVATION_STEP      SP03N500  TC Control Flags :  GBM IL DSE ---- Subsch. ID : 370 Det. descr. : SET OBSERVATION STEP	SC003500  1 <hex>	TC	
	ET=+ UT=+00.00.01	SEND_DRCU_COMMAND  SEND_DRCU_COMMAND  Command Parameter(s) : DRCUCOMMAND      SPD4N505 OVERRIDE      SPD9N505  TC Control Flags :  GBM IL DSE ---- Subsch. ID : 370 Det. descr. : SEND A SINGLE COMMAND TO THE DRCU	SCD06505  843c0010 <hex> 0 <hex> (Def)	TC	
	ET=+ UT=+00.00.00	SEND_DRCU_COMMAND  SEND_DRCU_COMMAND  Command Parameter(s) : DRCUCOMMAND      SPD4N505 OVERRIDE      SPD9N505  TC Control Flags :  GBM IL DSE ---- Subsch. ID : 370 Det. descr. : SEND A SINGLE COMMAND TO THE DRCU	SCD06505  843e0001 <hex> 0 <hex> (Def)	TC	
	ET=+ UT=+00.00.03	SEND_DRCU_COMMAND  SEND_DRCU_COMMAND  Command Parameter(s) : DRCUCOMMAND      SPD4N505 OVERRIDE      SPD9N505  TC Control Flags :  GBM IL DSE ---- Subsch. ID : 370 Det. descr. : SEND A SINGLE COMMAND TO THE DRCU	SCD06505  843e0000 <hex> 0 <hex> (Def)	TC	
	ET=+ UT=+00.00.00	SEND_DRCU_COMMAND  SEND_DRCU_COMMAND  Command Parameter(s) : DRCUCOMMAND      SPD4N505 OVERRIDE      SPD9N505  TC Control Flags :  GBM IL DSE ---- Subsch. ID : 370 Det. descr. : SEND A SINGLE COMMAND TO THE DRCU	SCD06505  843c0018 <hex> 0 <hex> (Def)	TC	

Mode\_DcuFunc13\_Phot BDA Integrity Check  
 File: H\_COP\_SPI\_DPIC.xls  
 Author: L.Lucas-hp



Step No.	Time	Activity/Remarks	TC/TLM	Display/ Branch	AIT Comment
	ET=+ UT=+00.00.01	SEND_DRCU_COMMAND  SEND_DRCU_COMMAND  Command Parameter(s) : DRCUCOMMAND           SPD4N505 OVERRIDE           SPD9N505  TC Control Flags :  GBM IL DSE --- -- ---  Subsch. ID : 370 Det. descr. : SEND A SINGLE COMMAND TO THE DRCU	SCD06505  843e0001 <hex> 0 <hex> (Def)	TC	
	ET=+ UT=+00.00.03	SEND_DRCU_COMMAND  SEND_DRCU_COMMAND  Command Parameter(s) : DRCUCOMMAND           SPD4N505 OVERRIDE           SPD9N505  TC Control Flags :  GBM IL DSE --- -- ---  Subsch. ID : 370 Det. descr. : SEND A SINGLE COMMAND TO THE DRCU	SCD06505  843e0000 <hex> 0 <hex> (Def)	TC	
	ET=+ UT=+00.00.01	FLUSH_FIFO  FLUSH_FIFO  Command Parameter(s) : FIFOFLAGS           SPD0N505  TC Control Flags :  GBM IL DSE --- -- ---  Subsch. ID : 370 Det. descr. : FORCE DPU TO READ SCIENCE DATA FROM FIFOS AND FLUSH CONTENTS	SCD01505  1000 <hex>	TC	
	ET=+ UT=+00.00.01	SEND_DRCU_COMMAND  SEND_DRCU_COMMAND  Command Parameter(s) : DRCUCOMMAND           SPD4N505 OVERRIDE           SPD9N505  TC Control Flags :  GBM IL DSE --- -- ---  Subsch. ID : 370 Det. descr. : SEND A SINGLE COMMAND TO THE DRCU	SCD06505  843c0000 <hex> 0 <hex> (Def)	TC	
	ET=+ UT=+00.00.00	SET_OBS_STEP  SET_OBS_STEP  Command Parameter(s) : OBSERVATION_STEP           SP03N500  TC Control Flags :  GBM IL DSE --- -- ---  Subsch. ID : 370 Det. descr. : SET OBSERVATION STEP	SC003500  0 <hex>	TC	
	ET=+ UT=+00.00.01	SET_BBID  SET_BBID  Command Parameter(s) : BUILDING_BLOCK_ID           SP01N500  TC Control Flags :  GBM IL DSE --- -- ---  Subsch. ID : 370 Det. descr. : SET BUILDING BLOCK IDENTIFIER	SC001500  80000000 <hex>	TC	

Mode\_DcuFunc13\_Phot BDA Integrity Check  
 File: H\_COP\_SPI\_DPIC.xls  
 Author: L.Lucas-hp



Step No.	Time	Activity/Remarks	TC/TLM	Display/ Branch	AIT Comment
	ET=+ UT=+00.00.02	SET_OBS_STEP  Command Parameter(s) : OBSERVATION_STEP SP03N500  TC Control Flags : GBM IL DSE ---- Subsch. ID : 370 Det. descr. : SET OBSERVATION STEP	SET_OBS_STEP  SC003500  0 <hex>	TC	
	ET=+ UT=+00.00.00	SET_BBID  Command Parameter(s) : BUILDING_BLOCK_ID SP01N500  TC Control Flags : GBM IL DSE ---- Subsch. ID : 370 Det. descr. : SET BUILDING BLOCK IDENTIFIER	SET_BBID  SC001500  88000009 <hex>	TC	
	ET=+ UT=+00.00.02	SEND_DRCU_COMMAND  Command Parameter(s) : DRCUCOMMAND SPD4N505 OVERRIDE SPD9N505  TC Control Flags : GBM IL DSE ---- Subsch. ID : 370 Det. descr. : SEND A SINGLE COMMAND TO THE DRCU	SEND_DRCU_COMMAND  SCD06505  843c0000 <hex> 0 <hex> (Def)	TC	
	ET=+ UT=+00.00.00	SET_OBS_STEP  Command Parameter(s) : OBSERVATION_STEP SP03N500  TC Control Flags : GBM IL DSE ---- Subsch. ID : 370 Det. descr. : SET OBSERVATION STEP	SET_OBS_STEP  SC003500  1 <hex>	TC	
	ET=+ UT=+00.00.01	SEND_DRCU_COMMAND  Command Parameter(s) : DRCUCOMMAND SPD4N505 OVERRIDE SPD9N505  TC Control Flags : GBM IL DSE ---- Subsch. ID : 370 Det. descr. : SEND A SINGLE COMMAND TO THE DRCU	SEND_DRCU_COMMAND  SCD06505  843e0001 <hex> 0 <hex> (Def)	TC	
	ET=+ UT=+00.00.10	SEND_DRCU_COMMAND  Command Parameter(s) : DRCUCOMMAND SPD4N505 OVERRIDE SPD9N505  TC Control Flags : GBM IL DSE ---- Subsch. ID : 370 Det. descr. : SEND A SINGLE COMMAND TO THE DRCU	SEND_DRCU_COMMAND  SCD06505  843e0000 <hex> 0 <hex> (Def)	TC	





Mode\_DcuFunc13\_Phot BDA Integrity Check  
 File: H\_COP\_SPI\_DPIC.xls  
 Author: L.Lucas-hp



Step No.	Time	Activity/Remarks	TC/TLM	Display/ Branch	AIT Comment
	ET=+ UT=+00.00.02	SET_OBS_STEP  Command Parameter(s) : OBSERVATION_STEP                      SP03N500  TC Control Flags :  GBM IL DSE --- -- ---  Subsch. ID : 370 Det. descr. : SET OBSERVATION STEP	SET_OBS_STEP  SC003500  1 <hex>	TC	
	ET=+ UT=+00.00.00	SEND_DRCU_COMMAND  Command Parameter(s) : DRCUCOMMAND                      SPD4N505 OVERRIDE                            SPD9N505  TC Control Flags :  GBM IL DSE --- -- ---  Subsch. ID : 370 Det. descr. : SEND A SINGLE COMMAND TO THE DRCU	SEND_DRCU_COMMAND  SCD06505  84010050 <hex> 0 <hex> (Def)	TC	
	ET=+ UT=+00.00.01	SEND_DRCU_COMMAND  Command Parameter(s) : DRCUCOMMAND                      SPD4N505 OVERRIDE                            SPD9N505  TC Control Flags :  GBM IL DSE --- -- ---  Subsch. ID : 370 Det. descr. : SEND A SINGLE COMMAND TO THE DRCU	SEND_DRCU_COMMAND  SCD06505  84020050 <hex> 0 <hex> (Def)	TC	
	ET=+ UT=+00.00.00	SEND_DRCU_COMMAND  Command Parameter(s) : DRCUCOMMAND                      SPD4N505 OVERRIDE                            SPD9N505  TC Control Flags :  GBM IL DSE --- -- ---  Subsch. ID : 370 Det. descr. : SEND A SINGLE COMMAND TO THE DRCU	SEND_DRCU_COMMAND  SCD06505  84030050 <hex> 0 <hex> (Def)	TC	
	ET=+ UT=+00.00.01	SEND_DRCU_COMMAND  Command Parameter(s) : DRCUCOMMAND                      SPD4N505 OVERRIDE                            SPD9N505  TC Control Flags :  GBM IL DSE --- -- ---  Subsch. ID : 370 Det. descr. : SEND A SINGLE COMMAND TO THE DRCU	SEND_DRCU_COMMAND  SCD06505  84040050 <hex> 0 <hex> (Def)	TC	
	ET=+ UT=+00.00.01	SET_OBS_STEP  Command Parameter(s) : OBSERVATION_STEP                      SP03N500  TC Control Flags :  GBM IL DSE --- -- ---  Subsch. ID : 370 Det. descr. : SET OBSERVATION STEP	SET_OBS_STEP  SC003500  0 <hex>	TC	

Mode\_DcuFunc13\_Phot BDA Integrity Check  
 File: H\_COP\_SPI\_DPIC.xls  
 Author: L.Lucas-hp



Step No.	Time	Activity/Remarks	TC/TLM	Display/ Branch	AIT Comment
	ET=+ UT=+00.00.00	SET_BBID  SET_BBID  Command Parameter(s) : BUILDING_BLOCK_ID SP01N500  TC Control Flags : GBM IL DSE ---- Subsch. ID : 370 Det. descr. : SET BUILDING BLOCK IDENTIFIER	SC001500  80000000 <hex>	TC	
	ET=+ UT=+00.00.03	SET_OBS_STEP  SET_OBS_STEP  Command Parameter(s) : OBSERVATION_STEP SP03N500  TC Control Flags : GBM IL DSE ---- Subsch. ID : 370 Det. descr. : SET OBSERVATION STEP	SC003500  0 <hex>	TC	
	ET=+ UT=+00.00.00	SET_BBID  SET_BBID  Command Parameter(s) : BUILDING_BLOCK_ID SP01N500  TC Control Flags : GBM IL DSE ---- Subsch. ID : 370 Det. descr. : SET BUILDING BLOCK IDENTIFIER	SC001500  881e000a <hex>	TC	
	ET=+ UT=+00.00.02	SET_OBS_STEP  SET_OBS_STEP  Command Parameter(s) : OBSERVATION_STEP SP03N500  TC Control Flags : GBM IL DSE ---- Subsch. ID : 370 Det. descr. : SET OBSERVATION STEP	SC003500  1 <hex>	TC	
	ET=+ UT=+00.00.01	SEND_DRCU_COMMAND  SEND_DRCU_COMMAND  Command Parameter(s) : DRCUCOMMAND SPD4N505 OVERRIDE SPD9N505  TC Control Flags : GBM IL DSE ---- Subsch. ID : 370 Det. descr. : SEND A SINGLE COMMAND TO THE DRCU	SCD06505  843c0010 <hex> 0 <hex> (Def)	TC	
	ET=+ UT=+00.00.00	SEND_DRCU_COMMAND  SEND_DRCU_COMMAND  Command Parameter(s) : DRCUCOMMAND SPD4N505 OVERRIDE SPD9N505  TC Control Flags : GBM IL DSE ---- Subsch. ID : 370 Det. descr. : SEND A SINGLE COMMAND TO THE DRCU	SCD06505  843e0001 <hex> 0 <hex> (Def)	TC	

Mode\_DcuFunc13\_Phot BDA Integrity Check  
 File: H\_COP\_SPI\_DPIC.xls  
 Author: L.Lucas-hp



Step No.	Time	Activity/Remarks	TC/TLM	Display/ Branch	AIT Comment
	ET=+ UT=+00.00.03	SEND_DRCU_COMMAND  SEND_DRCU_COMMAND  Command Parameter(s) : DRCUCOMMAND           SPD4N505 OVERRIDE        SPD9N505  TC Control Flags :  GBM IL DSE --- -- ---  Subsch. ID : 370 Det. descr. : SEND A SINGLE COMMAND TO THE DRCU	SCD06505  843e0000 <hex> 0 <hex> (Def)	TC	
	ET=+ UT=+00.00.00	SEND_DRCU_COMMAND  SEND_DRCU_COMMAND  Command Parameter(s) : DRCUCOMMAND           SPD4N505 OVERRIDE        SPD9N505  TC Control Flags :  GBM IL DSE --- -- ---  Subsch. ID : 370 Det. descr. : SEND A SINGLE COMMAND TO THE DRCU	SCD06505  843c0018 <hex> 0 <hex> (Def)	TC	
	ET=+ UT=+00.00.01	SEND_DRCU_COMMAND  SEND_DRCU_COMMAND  Command Parameter(s) : DRCUCOMMAND           SPD4N505 OVERRIDE        SPD9N505  TC Control Flags :  GBM IL DSE --- -- ---  Subsch. ID : 370 Det. descr. : SEND A SINGLE COMMAND TO THE DRCU	SCD06505  843e0001 <hex> 0 <hex> (Def)	TC	
	ET=+ UT=+00.00.03	SEND_DRCU_COMMAND  SEND_DRCU_COMMAND  Command Parameter(s) : DRCUCOMMAND           SPD4N505 OVERRIDE        SPD9N505  TC Control Flags :  GBM IL DSE --- -- ---  Subsch. ID : 370 Det. descr. : SEND A SINGLE COMMAND TO THE DRCU	SCD06505  843e0000 <hex> 0 <hex> (Def)	TC	
	ET=+ UT=+00.00.01	FLUSH_FIFO  FLUSH_FIFO  Command Parameter(s) : FIFOFLAGS            SPD0N505  TC Control Flags :  GBM IL DSE --- -- ---  Subsch. ID : 370 Det. descr. : FORCE DPU TO READ SCIENCE DATA FROM FIFOS AND FLUSH CONTENTS	SCD01505  1000 <hex>	TC	

Mode\_DcuFunc13\_Phot BDA Integrity Check  
 File: H\_COP\_SPI\_DPIC.xls  
 Author: L.Lucas-hp



Step No.	Time	Activity/Remarks	TC/TLM	Display/ Branch	AIT Comment
	ET=+ UT=+00.00.01	SEND_DRCU_COMMAND  SEND_DRCU_COMMAND  Command Parameter(s) : DRCUCOMMAND           SPD4N505 OVERRIDE                SPD9N505  TC Control Flags :  GBM IL DSE --- -- ---  Subsch. ID : 370 Det. descr. : SEND A SINGLE COMMAND TO THE DRCU	SCD06505  843c0000 <hex> 0 <hex> (Def)	TC	
	ET=+ UT=+00.00.00	SET_OBS_STEP  SET_OBS_STEP  Command Parameter(s) : OBSERVATION_STEP       SP03N500  TC Control Flags :  GBM IL DSE --- -- ---  Subsch. ID : 370 Det. descr. : SET OBSERVATION STEP	SC003500  0 <hex>	TC	
	ET=+ UT=+00.00.01	SET_BBID  SET_BBID  Command Parameter(s) : BUILDING_BLOCK_ID       SP01N500  TC Control Flags :  GBM IL DSE --- -- ---  Subsch. ID : 370 Det. descr. : SET BUILDING BLOCK IDENTIFIER	SC001500  80000000 <hex>	TC	
	ET=+ UT=+00.00.02	SET_OBS_STEP  SET_OBS_STEP  Command Parameter(s) : OBSERVATION_STEP       SP03N500  TC Control Flags :  GBM IL DSE --- -- ---  Subsch. ID : 370 Det. descr. : SET OBSERVATION STEP	SC003500  0 <hex>	TC	
	ET=+ UT=+00.00.00	SET_BBID  SET_BBID  Command Parameter(s) : BUILDING_BLOCK_ID       SP01N500  TC Control Flags :  GBM IL DSE --- -- ---  Subsch. ID : 370 Det. descr. : SET BUILDING BLOCK IDENTIFIER	SC001500  8800000a <hex>	TC	
	ET=+ UT=+00.00.02	SEND_DRCU_COMMAND  SEND_DRCU_COMMAND  Command Parameter(s) : DRCUCOMMAND           SPD4N505 OVERRIDE                SPD9N505  TC Control Flags :  GBM IL DSE --- -- ---  Subsch. ID : 370 Det. descr. : SEND A SINGLE COMMAND TO THE DRCU	SCD06505  843c0000 <hex> 0 <hex> (Def)	TC	

Mode\_DcuFunc13\_Phot BDA Integrity Check  
 File: H\_COP\_SPI\_DPIC.xls  
 Author: L.Lucas-hp



Step No.	Time	Activity/Remarks	TC/TLM	Display/ Branch	AIT Comment
	ET=+ UT=+00.00.00	SET_OBS_STEP  Command Parameter(s) : OBSERVATION_STEP           SP03N500  TC Control Flags :  GBM IL DSE --- -- ---  Subsch. ID : 370 Det. descr. : SET OBSERVATION STEP	SET_OBS_STEP  SC003500  1 <hex>	TC	
	ET=+ UT=+00.00.01	SEND_DRCU_COMMAND  Command Parameter(s) : DRCUCOMMAND           SPD4N505 OVERRIDE                SPD9N505  TC Control Flags :  GBM IL DSE --- -- ---  Subsch. ID : 370 Det. descr. : SEND A SINGLE COMMAND TO THE DRCU	SEND_DRCU_COMMAND  SCD06505  843e0001 <hex> 0 <hex> (Def)	TC	
	ET=+ UT=+00.00.10	SEND_DRCU_COMMAND  Command Parameter(s) : DRCUCOMMAND           SPD4N505 OVERRIDE                SPD9N505  TC Control Flags :  GBM IL DSE --- -- ---  Subsch. ID : 370 Det. descr. : SEND A SINGLE COMMAND TO THE DRCU	SEND_DRCU_COMMAND  SCD06505  843e0000 <hex> 0 <hex> (Def)	TC	
	ET=+ UT=+00.00.01	FLUSH_FIFO  Command Parameter(s) : FIFOFLAGS            SPD0N505  TC Control Flags :  GBM IL DSE --- -- ---  Subsch. ID : 370 Det. descr. : FORCE DPU TO READ SCIENCE DATA FROM FIFOS AND FLUSH CONTENTS	FLUSH_FIFO  SCD01505  1000 <hex>	TC	
	ET=+ UT=+00.00.01	SET_OBS_STEP  Command Parameter(s) : OBSERVATION_STEP           SP03N500  TC Control Flags :  GBM IL DSE --- -- ---  Subsch. ID : 370 Det. descr. : SET OBSERVATION STEP	SET_OBS_STEP  SC003500  ffff <hex>	TC	
	ET=+ UT=+00.00.01	SET_OBS_STEP  Command Parameter(s) : OBSERVATION_STEP           SP03N500  TC Control Flags :  GBM IL DSE --- -- ---  Subsch. ID : 370 Det. descr. : SET OBSERVATION STEP	SET_OBS_STEP  SC003500  0 <hex>	TC	

Mode\_DcuFunc13\_Phot BDA Integrity Check  
 File: H\_COP\_SPI\_DPIC.xls  
 Author: L.Lucas-hp



Step No.	Time	Activity/Remarks	TC/TLM	Display/ Branch	AIT Comment
	ET=+ UT=+00.00.00	SET_BBID  Command Parameter(s) : BUILDING_BLOCK_ID SP01N500  TC Control Flags : GBM IL DSE ---- Subsch. ID : 370 Det. descr. : SET BUILDING BLOCK IDENTIFIER	SET_BBID  SC001500  80000000 <hex>	TC	
	ET=+ UT=+00.00.02	SET_OBS_STEP  Command Parameter(s) : OBSERVATION_STEP SP03N500  TC Control Flags : GBM IL DSE ---- Subsch. ID : 370 Det. descr. : SET OBSERVATION STEP	SET_OBS_STEP  SC003500  0 <hex>	TC	
	ET=+ UT=+00.00.00	SET_BBID  Command Parameter(s) : BUILDING_BLOCK_ID SP01N500  TC Control Flags : GBM IL DSE ---- Subsch. ID : 370 Det. descr. : SET BUILDING BLOCK IDENTIFIER	SET_BBID  SC001500  8840000b <hex>	TC	
	ET=+ UT=+00.00.02	SET_OBS_STEP  Command Parameter(s) : OBSERVATION_STEP SP03N500  TC Control Flags : GBM IL DSE ---- Subsch. ID : 370 Det. descr. : SET OBSERVATION STEP	SET_OBS_STEP  SC003500  1 <hex>	TC	
	ET=+ UT=+00.00.00	SEND_DRCU_COMMAND  Command Parameter(s) : DRCUCOMMAND SPD4N505 OVERRIDE SPD9N505  TC Control Flags : GBM IL DSE ---- Subsch. ID : 370 Det. descr. : SEND A SINGLE COMMAND TO THE DRCU	SEND_DRCU_COMMAND  SCD06505  84010064 <hex> 0 <hex> (Def)	TC	
	ET=+ UT=+00.00.01	SEND_DRCU_COMMAND  Command Parameter(s) : DRCUCOMMAND SPD4N505 OVERRIDE SPD9N505  TC Control Flags : GBM IL DSE ---- Subsch. ID : 370 Det. descr. : SEND A SINGLE COMMAND TO THE DRCU	SEND_DRCU_COMMAND  SCD06505  84020064 <hex> 0 <hex> (Def)	TC	

Mode\_DcuFunc13\_Phot BDA Integrity Check  
 File: H\_COP\_SPI\_DPIC.xls  
 Author: L.Lucas-hp



Step No.	Time	Activity/Remarks	TC/TLM	Display/ Branch	AIT Comment
	ET=+ UT=+00.00.00	SEND_DRCU_COMMAND  SEND_DRCU_COMMAND  Command Parameter(s) : DRCUCOMMAND           SPD4N505 OVERRIDE        SPD9N505  TC Control Flags :  GBM IL DSE ---- -- --  Subsch. ID : 370 Det. descr. : SEND A SINGLE COMMAND TO THE DRCU	SCD06505  84030064 <hex> 0 <hex> (Def)	TC	
	ET=+ UT=+00.00.01	SEND_DRCU_COMMAND  SEND_DRCU_COMMAND  Command Parameter(s) : DRCUCOMMAND           SPD4N505 OVERRIDE        SPD9N505  TC Control Flags :  GBM IL DSE ---- -- --  Subsch. ID : 370 Det. descr. : SEND A SINGLE COMMAND TO THE DRCU	SCD06505  84040064 <hex> 0 <hex> (Def)	TC	
	ET=+ UT=+00.00.01	SET_OBS_STEP  SET_OBS_STEP  Command Parameter(s) : OBSERVATION_STEP        SP03N500  TC Control Flags :  GBM IL DSE ---- -- --  Subsch. ID : 370 Det. descr. : SET OBSERVATION STEP	SC003500  0 <hex>	TC	
	ET=+ UT=+00.00.00	SET_BBID  SET_BBID  Command Parameter(s) : BUILDING_BLOCK_ID        SP01N500  TC Control Flags :  GBM IL DSE ---- -- --  Subsch. ID : 370 Det. descr. : SET BUILDING BLOCK IDENTIFIER	SC001500  80000000 <hex>	TC	
	ET=+ UT=+00.00.03	SET_OBS_STEP  SET_OBS_STEP  Command Parameter(s) : OBSERVATION_STEP        SP03N500  TC Control Flags :  GBM IL DSE ---- -- --  Subsch. ID : 370 Det. descr. : SET OBSERVATION STEP	SC003500  0 <hex>	TC	
	ET=+ UT=+00.00.00	SET_BBID  SET_BBID  Command Parameter(s) : BUILDING_BLOCK_ID        SP01N500  TC Control Flags :  GBM IL DSE ---- -- --  Subsch. ID : 370 Det. descr. : SET BUILDING BLOCK IDENTIFIER	SC001500  881e000b <hex>	TC	



Mode\_DcuFunc13\_Phot BDA Integrity Check  
 File: H\_COP\_SPI\_DPIC.xls  
 Author: L.Lucas-hp



Step No.	Time	Activity/Remarks	TC/TLM	Display/ Branch	AIT Comment
	ET=+ UT=+00.00.02	SET_OBS_STEP  SET_OBS_STEP  Command Parameter(s) : OBSERVATION_STEP           SP03N500  TC Control Flags :  GBM IL DSE --- -- ---  Subsch. ID : 370 Det. descr. : SET OBSERVATION STEP	SC003500	TC	
	ET=+ UT=+00.00.01	SEND_DRCU_COMMAND  SEND_DRCU_COMMAND  Command Parameter(s) : DRCUCOMMAND           SPD4N505 OVERRIDE                SPD9N505  TC Control Flags :  GBM IL DSE --- -- ---  Subsch. ID : 370 Det. descr. : SEND A SINGLE COMMAND TO THE DRCU	SCD06505	TC	
	ET=+ UT=+00.00.00	SEND_DRCU_COMMAND  SEND_DRCU_COMMAND  Command Parameter(s) : DRCUCOMMAND           SPD4N505 OVERRIDE                SPD9N505  TC Control Flags :  GBM IL DSE --- -- ---  Subsch. ID : 370 Det. descr. : SEND A SINGLE COMMAND TO THE DRCU	SCD06505	TC	
	ET=+ UT=+00.00.03	SEND_DRCU_COMMAND  SEND_DRCU_COMMAND  Command Parameter(s) : DRCUCOMMAND           SPD4N505 OVERRIDE                SPD9N505  TC Control Flags :  GBM IL DSE --- -- ---  Subsch. ID : 370 Det. descr. : SEND A SINGLE COMMAND TO THE DRCU	SCD06505	TC	
	ET=+ UT=+00.00.00	SEND_DRCU_COMMAND  SEND_DRCU_COMMAND  Command Parameter(s) : DRCUCOMMAND           SPD4N505 OVERRIDE                SPD9N505  TC Control Flags :  GBM IL DSE --- -- ---  Subsch. ID : 370 Det. descr. : SEND A SINGLE COMMAND TO THE DRCU	SCD06505	TC	
	ET=+ UT=+00.00.01	SEND_DRCU_COMMAND  SEND_DRCU_COMMAND  Command Parameter(s) : DRCUCOMMAND           SPD4N505 OVERRIDE                SPD9N505  TC Control Flags :  GBM IL DSE --- -- ---  Subsch. ID : 370 Det. descr. : SEND A SINGLE COMMAND TO THE DRCU	SCD06505	TC	

Mode\_DcuFunc13\_Phot BDA Integrity Check  
 File: H\_COP\_SPI\_DPIC.xls  
 Author: L.Lucas-hp



Step No.	Time	Activity/Remarks	TC/TLM	Display/ Branch	AIT Comment
	ET=+ UT=+00.00.03	SEND_DRCU_COMMAND  SEND_DRCU_COMMAND  Command Parameter(s) : DRCUCOMMAND           SPD4N505 OVERRIDE                SPD9N505  TC Control Flags :  GBM IL DSE --- -- ---  Subsch. ID : 370 Det. descr. : SEND A SINGLE COMMAND TO THE DRCU	SCD06505  843e0000 <hex> 0 <hex> (Def)	TC	
	ET=+ UT=+00.00.01	FLUSH_FIFO  FLUSH_FIFO  Command Parameter(s) : FIFOFLAGS               SPD0N505  TC Control Flags :  GBM IL DSE --- -- ---  Subsch. ID : 370 Det. descr. : FORCE DPU TO READ SCIENCE DATA FROM FIFOS AND FLUSH CONTENTS	SCD01505  1000 <hex>	TC	
	ET=+ UT=+00.00.01	SEND_DRCU_COMMAND  SEND_DRCU_COMMAND  Command Parameter(s) : DRCUCOMMAND           SPD4N505 OVERRIDE                SPD9N505  TC Control Flags :  GBM IL DSE --- -- ---  Subsch. ID : 370 Det. descr. : SEND A SINGLE COMMAND TO THE DRCU	SCD06505  843c0000 <hex> 0 <hex> (Def)	TC	
	ET=+ UT=+00.00.00	SET_OBS_STEP  SET_OBS_STEP  Command Parameter(s) : OBSERVATION_STEP       SP03N500  TC Control Flags :  GBM IL DSE --- -- ---  Subsch. ID : 370 Det. descr. : SET OBSERVATION STEP	SC003500  0 <hex>	TC	
	ET=+ UT=+00.00.01	SET_BBID  SET_BBID  Command Parameter(s) : BUILDING_BLOCK_ID       SP01N500  TC Control Flags :  GBM IL DSE --- -- ---  Subsch. ID : 370 Det. descr. : SET BUILDING BLOCK IDENTIFIER	SC001500  80000000 <hex>	TC	
	ET=+ UT=+00.00.02	SET_OBS_STEP  SET_OBS_STEP  Command Parameter(s) : OBSERVATION_STEP       SP03N500  TC Control Flags :  GBM IL DSE --- -- ---  Subsch. ID : 370 Det. descr. : SET OBSERVATION STEP	SC003500  0 <hex>	TC	

Mode\_DcuFunc13\_Phot BDA Integrity Check  
 File: H\_COP\_SPI\_DPIC.xls  
 Author: L.Lucas-hp



Step No.	Time	Activity/Remarks	TC/TLM	Display/ Branch	AIT Comment
	ET=+ UT=+00.00.00	SET_BBID  Command Parameter(s) : BUILDING_BLOCK_ID SP01N500  TC Control Flags : GBM IL DSE ---- Subsch. ID : 370 Det. descr. : SET BUILDING BLOCK IDENTIFIER	SET_BBID  SC001500  8800000b <hex>	TC	
	ET=+ UT=+00.00.02	SEND_DRCU_COMMAND  Command Parameter(s) : DRCUCOMMAND SPD4N505 OVERRIDE SPD9N505  TC Control Flags : GBM IL DSE --- -- Subsch. ID : 370 Det. descr. : SEND A SINGLE COMMAND TO THE DRCU	SEND_DRCU_COMMAND  SCD06505  843c0000 <hex> 0 <hex> (Def)	TC	
	ET=+ UT=+00.00.00	SET_OBS_STEP  Command Parameter(s) : OBSERVATION_STEP SP03N500  TC Control Flags : GBM IL DSE --- -- Subsch. ID : 370 Det. descr. : SET OBSERVATION STEP	SET_OBS_STEP  SC003500  1 <hex>	TC	
	ET=+ UT=+00.00.01	SEND_DRCU_COMMAND  Command Parameter(s) : DRCUCOMMAND SPD4N505 OVERRIDE SPD9N505  TC Control Flags : GBM IL DSE --- -- Subsch. ID : 370 Det. descr. : SEND A SINGLE COMMAND TO THE DRCU	SEND_DRCU_COMMAND  SCD06505  843e0001 <hex> 0 <hex> (Def)	TC	
	ET=+ UT=+00.00.10	SEND_DRCU_COMMAND  Command Parameter(s) : DRCUCOMMAND SPD4N505 OVERRIDE SPD9N505  TC Control Flags : GBM IL DSE --- -- Subsch. ID : 370 Det. descr. : SEND A SINGLE COMMAND TO THE DRCU	SEND_DRCU_COMMAND  SCD06505  843e0000 <hex> 0 <hex> (Def)	TC	
	ET=+ UT=+00.00.01	FLUSH_FIFO  Command Parameter(s) : FIFOFLAGS SPD0N505  TC Control Flags : GBM IL DSE --- -- Subsch. ID : 370 Det. descr. : FORCE DPU TO READ SCIENCE DATA FROM FIFOS AND FLUSH CONTENTS	FLUSH_FIFO  SCD01505  1000 <hex>	TC	

Mode\_DcuFunc13\_Phot BDA Integrity Check  
 File: H\_COP\_SPI\_DPIC.xls  
 Author: L.Lucas-hp



Step No.	Time	Activity/Remarks	TC/TLM	Display/ Branch	AIT Comment
	ET=+ UT=+00.00.01	SET_OBS_STEP  Command Parameter(s) : OBSERVATION_STEP SP03N500  TC Control Flags : GBM IL DSE ---- Subsch. ID : 370 Det. descr. : SET OBSERVATION STEP	SET_OBS_STEP  SC003500  ffff <hex>	TC	
	ET=+ UT=+00.00.01	SET_OBS_STEP  Command Parameter(s) : OBSERVATION_STEP SP03N500  TC Control Flags : GBM IL DSE ---- Subsch. ID : 370 Det. descr. : SET OBSERVATION STEP	SET_OBS_STEP  SC003500  0 <hex>	TC	
	ET=+ UT=+00.00.00	SET_BBID  Command Parameter(s) : BUILDING_BLOCK_ID SP01N500  TC Control Flags : GBM IL DSE ---- Subsch. ID : 370 Det. descr. : SET BUILDING BLOCK IDENTIFIER	SET_BBID  SC001500  80000000 <hex>	TC	
	ET=+ UT=+00.00.02	SET_OBS_STEP  Command Parameter(s) : OBSERVATION_STEP SP03N500  TC Control Flags : GBM IL DSE ---- Subsch. ID : 370 Det. descr. : SET OBSERVATION STEP	SET_OBS_STEP  SC003500  0 <hex>	TC	
	ET=+ UT=+00.00.00	SET_BBID  Command Parameter(s) : BUILDING_BLOCK_ID SP01N500  TC Control Flags : GBM IL DSE ---- Subsch. ID : 370 Det. descr. : SET BUILDING BLOCK IDENTIFIER	SET_BBID  SC001500  8840000c <hex>	TC	
	ET=+ UT=+00.00.02	SET_OBS_STEP  Command Parameter(s) : OBSERVATION_STEP SP03N500  TC Control Flags : GBM IL DSE ---- Subsch. ID : 370 Det. descr. : SET OBSERVATION STEP	SET_OBS_STEP  SC003500  1 <hex>	TC	

Mode\_DcuFunc13\_Phot BDA Integrity Check  
 File: H\_COP\_SPI\_DPIC.xls  
 Author: L.Lucas-hp



Step No.	Time	Activity/Remarks	TC/TLM	Display/ Branch	AIT Comment
	ET=+ UT=+00.00.00	SEND_DRCU_COMMAND  SEND_DRCU_COMMAND  Command Parameter(s) : DRCUCOMMAND           SPD4N505 OVERRIDE        SPD9N505  TC Control Flags :  GBM IL DSE --- -- ---  Subsch. ID : 370 Det. descr. : SEND A SINGLE COMMAND TO THE DRCU	SCD06505  84010078 <hex> 0 <hex> (Def)	TC	
	ET=+ UT=+00.00.01	SEND_DRCU_COMMAND  SEND_DRCU_COMMAND  Command Parameter(s) : DRCUCOMMAND           SPD4N505 OVERRIDE        SPD9N505  TC Control Flags :  GBM IL DSE --- -- ---  Subsch. ID : 370 Det. descr. : SEND A SINGLE COMMAND TO THE DRCU	SCD06505  84020078 <hex> 0 <hex> (Def)	TC	
	ET=+ UT=+00.00.00	SEND_DRCU_COMMAND  SEND_DRCU_COMMAND  Command Parameter(s) : DRCUCOMMAND           SPD4N505 OVERRIDE        SPD9N505  TC Control Flags :  GBM IL DSE --- -- ---  Subsch. ID : 370 Det. descr. : SEND A SINGLE COMMAND TO THE DRCU	SCD06505  84030078 <hex> 0 <hex> (Def)	TC	
	ET=+ UT=+00.00.01	SEND_DRCU_COMMAND  SEND_DRCU_COMMAND  Command Parameter(s) : DRCUCOMMAND           SPD4N505 OVERRIDE        SPD9N505  TC Control Flags :  GBM IL DSE --- -- ---  Subsch. ID : 370 Det. descr. : SEND A SINGLE COMMAND TO THE DRCU	SCD06505  84040078 <hex> 0 <hex> (Def)	TC	
	ET=+ UT=+00.00.01	SET_OBS_STEP  SET_OBS_STEP  Command Parameter(s) : OBSERVATION_STEP        SP03N500  TC Control Flags :  GBM IL DSE --- -- ---  Subsch. ID : 370 Det. descr. : SET OBSERVATION STEP	SC003500  0 <hex>	TC	
	ET=+ UT=+00.00.00	SET_BBID  SET_BBID  Command Parameter(s) : BUILDING_BLOCK_ID        SP01N500  TC Control Flags :  GBM IL DSE --- -- ---  Subsch. ID : 370 Det. descr. : SET BUILDING BLOCK IDENTIFIER	SC001500  80000000 <hex>	TC	

Mode\_DcuFunc13\_Phot BDA Integrity Check  
 File: H\_COP\_SPI\_DPIC.xls  
 Author: L.Lucas-hp



Step No.	Time	Activity/Remarks	TC/TLM	Display/ Branch	AIT Comment
	ET=+ UT=+00.00.03	SET_OBS_STEP  Command Parameter(s) : OBSERVATION_STEP SP03N500  TC Control Flags : GBM IL DSE ---- Subsch. ID : 370 Det. descr. : SET OBSERVATION STEP	SET_OBS_STEP  SC003500  0 <hex>	TC	
	ET=+ UT=+00.00.00	SET_BBID  Command Parameter(s) : BUILDING_BLOCK_ID SP01N500  TC Control Flags : GBM IL DSE ---- Subsch. ID : 370 Det. descr. : SET BUILDING BLOCK IDENTIFIER	SET_BBID  SC001500  881e000c <hex>	TC	
	ET=+ UT=+00.00.02	SET_OBS_STEP  Command Parameter(s) : OBSERVATION_STEP SP03N500  TC Control Flags : GBM IL DSE ---- Subsch. ID : 370 Det. descr. : SET OBSERVATION STEP	SET_OBS_STEP  SC003500  1 <hex>	TC	
	ET=+ UT=+00.00.01	SEND_DRCU_COMMAND  Command Parameter(s) : DRCUCOMMAND SPD4N505 OVERRIDE SPD9N505  TC Control Flags : GBM IL DSE ---- Subsch. ID : 370 Det. descr. : SEND A SINGLE COMMAND TO THE DRCU	SEND_DRCU_COMMAND  SCD06505  843c0010 <hex> 0 <hex> (Def)	TC	
	ET=+ UT=+00.00.00	SEND_DRCU_COMMAND  Command Parameter(s) : DRCUCOMMAND SPD4N505 OVERRIDE SPD9N505  TC Control Flags : GBM IL DSE ---- Subsch. ID : 370 Det. descr. : SEND A SINGLE COMMAND TO THE DRCU	SEND_DRCU_COMMAND  SCD06505  843e0001 <hex> 0 <hex> (Def)	TC	
	ET=+ UT=+00.00.03	SEND_DRCU_COMMAND  Command Parameter(s) : DRCUCOMMAND SPD4N505 OVERRIDE SPD9N505  TC Control Flags : GBM IL DSE ---- Subsch. ID : 370 Det. descr. : SEND A SINGLE COMMAND TO THE DRCU	SEND_DRCU_COMMAND  SCD06505  843e0000 <hex> 0 <hex> (Def)	TC	

Mode\_DcuFunc13\_Phot BDA Integrity Check  
 File: H\_COP\_SPI\_DPIC.xls  
 Author: L.Lucas-hp



Step No.	Time	Activity/Remarks	TC/TLM	Display/ Branch	AIT Comment
	ET=+ UT=+00.00.00	SEND_DRCU_COMMAND  SEND_DRCU_COMMAND  Command Parameter(s) : DRCUCOMMAND           SPD4N505 OVERRIDE        SPD9N505  TC Control Flags :  GBM IL DSE ---- --  Subsch. ID : 370 Det. descr. : SEND A SINGLE COMMAND TO THE DRCU	SCD06505  843c0018 <hex> 0 <hex> (Def)	TC	
	ET=+ UT=+00.00.01	SEND_DRCU_COMMAND  SEND_DRCU_COMMAND  Command Parameter(s) : DRCUCOMMAND           SPD4N505 OVERRIDE        SPD9N505  TC Control Flags :  GBM IL DSE ---- --  Subsch. ID : 370 Det. descr. : SEND A SINGLE COMMAND TO THE DRCU	SCD06505  843e0001 <hex> 0 <hex> (Def)	TC	
	ET=+ UT=+00.00.03	SEND_DRCU_COMMAND  SEND_DRCU_COMMAND  Command Parameter(s) : DRCUCOMMAND           SPD4N505 OVERRIDE        SPD9N505  TC Control Flags :  GBM IL DSE ---- --  Subsch. ID : 370 Det. descr. : SEND A SINGLE COMMAND TO THE DRCU	SCD06505  843e0000 <hex> 0 <hex> (Def)	TC	
	ET=+ UT=+00.00.01	FLUSH_FIFO  FLUSH_FIFO  Command Parameter(s) : FIFOFLAGS            SPD0N505  TC Control Flags :  GBM IL DSE ---- --  Subsch. ID : 370 Det. descr. : FORCE DPU TO READ SCIENCE DATA FROM FIFOS AND FLUSH CONTENTS	SCD01505  1000 <hex>	TC	
	ET=+ UT=+00.00.01	SEND_DRCU_COMMAND  SEND_DRCU_COMMAND  Command Parameter(s) : DRCUCOMMAND           SPD4N505 OVERRIDE        SPD9N505  TC Control Flags :  GBM IL DSE ---- --  Subsch. ID : 370 Det. descr. : SEND A SINGLE COMMAND TO THE DRCU	SCD06505  843c0000 <hex> 0 <hex> (Def)	TC	
	ET=+ UT=+00.00.00	SET_OBS_STEP  SET_OBS_STEP  Command Parameter(s) : OBSERVATION_STEP        SP03N500  TC Control Flags :  GBM IL DSE ---- --  Subsch. ID : 370 Det. descr. : SET OBSERVATION STEP	SC003500  0 <hex>	TC	

Mode\_DcuFunc13\_Phot BDA Integrity Check  
 File: H\_COP\_SPI\_DPIC.xls  
 Author: L.Lucas-hp



Step No.	Time	Activity/Remarks	TC/TLM	Display/ Branch	AIT Comment
	ET=+ UT=+00.00.01	SET_BBID  Command Parameter(s) : BUILDING_BLOCK_ID SP01N500  TC Control Flags : GBM IL DSE ---- Subsch. ID : 370 Det. descr. : SET BUILDING BLOCK IDENTIFIER	SET_BBID  SC001500  80000000 <hex>	TC	
	ET=+ UT=+00.00.02	SET_OBS_STEP  Command Parameter(s) : OBSERVATION_STEP SP03N500  TC Control Flags : GBM IL DSE ---- Subsch. ID : 370 Det. descr. : SET OBSERVATION STEP	SET_OBS_STEP  SC003500  0 <hex>	TC	
	ET=+ UT=+00.00.00	SET_BBID  Command Parameter(s) : BUILDING_BLOCK_ID SP01N500  TC Control Flags : GBM IL DSE ---- Subsch. ID : 370 Det. descr. : SET BUILDING BLOCK IDENTIFIER	SET_BBID  SC001500  8800000c <hex>	TC	
	ET=+ UT=+00.00.02	SEND_DRCU_COMMAND  Command Parameter(s) : DRCUCOMMAND SPD4N505 OVERRIDE SPD9N505  TC Control Flags : GBM IL DSE ---- Subsch. ID : 370 Det. descr. : SEND A SINGLE COMMAND TO THE DRCU	SEND_DRCU_COMMAND  SCD06505  843c0000 <hex> 0 <hex> (Def)	TC	
	ET=+ UT=+00.00.00	SET_OBS_STEP  Command Parameter(s) : OBSERVATION_STEP SP03N500  TC Control Flags : GBM IL DSE ---- Subsch. ID : 370 Det. descr. : SET OBSERVATION STEP	SET_OBS_STEP  SC003500  1 <hex>	TC	
	ET=+ UT=+00.00.01	SEND_DRCU_COMMAND  Command Parameter(s) : DRCUCOMMAND SPD4N505 OVERRIDE SPD9N505  TC Control Flags : GBM IL DSE ---- Subsch. ID : 370 Det. descr. : SEND A SINGLE COMMAND TO THE DRCU	SEND_DRCU_COMMAND  SCD06505  843e0001 <hex> 0 <hex> (Def)	TC	



Mode\_DcuFunc13\_Phot BDA Integrity Check  
 File: H\_COP\_SPI\_DPIC.xls  
 Author: L.Lucas-hp



Step No.	Time	Activity/Remarks	TC/TLM	Display/ Branch	AIT Comment
	ET=+ UT=+00.00.10	SEND_DRCU_COMMAND  SEND_DRCU_COMMAND  Command Parameter(s) : DRCUCOMMAND           SPD4N505 OVERRIDE                SPD9N505  TC Control Flags :  GBM IL DSE --- -- ---  Subsch. ID : 370 Det. descr. : SEND A SINGLE COMMAND TO THE DRCU	SCD06505  843e0000 <hex> 0 <hex> (Def)	TC	
	ET=+ UT=+00.00.01	FLUSH_FIFO  FLUSH_FIFO  Command Parameter(s) : FIFOFLLAGS            SPD0N505  TC Control Flags :  GBM IL DSE --- -- ---  Subsch. ID : 370 Det. descr. : FORCE DPU TO READ SCIENCE DATA FROM FIFOS AND FLUSH CONTENTS	SCD01505  1000 <hex>	TC	
	ET=+ UT=+00.00.01	SET_OBS_STEP  SET_OBS_STEP  Command Parameter(s) : OBSERVATION_STEP        SP03N500  TC Control Flags :  GBM IL DSE --- -- ---  Subsch. ID : 370 Det. descr. : SET OBSERVATION STEP	SC003500  ffff <hex>	TC	
	ET=+ UT=+00.00.01	SET_OBS_STEP  SET_OBS_STEP  Command Parameter(s) : OBSERVATION_STEP        SP03N500  TC Control Flags :  GBM IL DSE --- -- ---  Subsch. ID : 370 Det. descr. : SET OBSERVATION STEP	SC003500  0 <hex>	TC	
	ET=+ UT=+00.00.00	SET_BBID  SET_BBID  Command Parameter(s) : BUILDING_BLOCK_ID        SP01N500  TC Control Flags :  GBM IL DSE --- -- ---  Subsch. ID : 370 Det. descr. : SET BUILDING BLOCK IDENTIFIER	SC001500  80000000 <hex>	TC	
	ET=+ UT=+00.00.02	SET_OBS_STEP  SET_OBS_STEP  Command Parameter(s) : OBSERVATION_STEP        SP03N500  TC Control Flags :  GBM IL DSE --- -- ---  Subsch. ID : 370 Det. descr. : SET OBSERVATION STEP	SC003500  0 <hex>	TC	

Mode\_DcuFunc13\_Phot BDA Integrity Check  
 File: H\_COP\_SPI\_DPIC.xls  
 Author: L.Lucas-hp



Step No.	Time	Activity/Remarks	TC/TLM	Display/ Branch	AIT Comment
	ET=+ UT=+00.00.00	SET_BBID  SET_BBID  Command Parameter(s) : BUILDING_BLOCK_ID SP01N500  TC Control Flags : GBM IL DSE ---- Subsch. ID : 370 Det. descr. : SET BUILDING BLOCK IDENTIFIER	SC001500  8840000d <hex>	TC	
	ET=+ UT=+00.00.02	SET_OBS_STEP  SET_OBS_STEP  Command Parameter(s) : OBSERVATION_STEP SP03N500  TC Control Flags : GBM IL DSE ---- Subsch. ID : 370 Det. descr. : SET OBSERVATION STEP	SC003500  1 <hex>	TC	
	ET=+ UT=+00.00.00	SEND_DRCU_COMMAND  SEND_DRCU_COMMAND  Command Parameter(s) : DRCUCOMMAND SPD4N505 OVERRIDE SPD9N505  TC Control Flags : GBM IL DSE ---- Subsch. ID : 370 Det. descr. : SEND A SINGLE COMMAND TO THE DRCU	SCD06505  840100a0 <hex> 0 <hex> (Def)	TC	
	ET=+ UT=+00.00.01	SEND_DRCU_COMMAND  SEND_DRCU_COMMAND  Command Parameter(s) : DRCUCOMMAND SPD4N505 OVERRIDE SPD9N505  TC Control Flags : GBM IL DSE ---- Subsch. ID : 370 Det. descr. : SEND A SINGLE COMMAND TO THE DRCU	SCD06505  840200a0 <hex> 0 <hex> (Def)	TC	
	ET=+ UT=+00.00.00	SEND_DRCU_COMMAND  SEND_DRCU_COMMAND  Command Parameter(s) : DRCUCOMMAND SPD4N505 OVERRIDE SPD9N505  TC Control Flags : GBM IL DSE ---- Subsch. ID : 370 Det. descr. : SEND A SINGLE COMMAND TO THE DRCU	SCD06505  840300a0 <hex> 0 <hex> (Def)	TC	
	ET=+ UT=+00.00.01	SEND_DRCU_COMMAND  SEND_DRCU_COMMAND  Command Parameter(s) : DRCUCOMMAND SPD4N505 OVERRIDE SPD9N505  TC Control Flags : GBM IL DSE ---- Subsch. ID : 370 Det. descr. : SEND A SINGLE COMMAND TO THE DRCU	SCD06505  840400a0 <hex> 0 <hex> (Def)	TC	

Mode\_DcuFunc13\_Phot BDA Integrity Check  
 File: H\_COP\_SPI\_DPIC.xls  
 Author: L.Lucas-hp



Step No.	Time	Activity/Remarks	TC/TLM	Display/ Branch	AIT Comment
	ET=+ UT=+00.00.01	SET_OBS_STEP  Command Parameter(s) : OBSERVATION_STEP SP03N500  TC Control Flags : GBM IL DSE ---- Subsch. ID : 370 Det. descr. : SET OBSERVATION STEP	SET_OBS_STEP  SC003500  0 <hex>	TC	
	ET=+ UT=+00.00.00	SET_BBID  Command Parameter(s) : BUILDING_BLOCK_ID SP01N500  TC Control Flags : GBM IL DSE ---- Subsch. ID : 370 Det. descr. : SET BUILDING BLOCK IDENTIFIER	SET_BBID  SC001500  80000000 <hex>	TC	
	ET=+ UT=+00.00.03	SET_OBS_STEP  Command Parameter(s) : OBSERVATION_STEP SP03N500  TC Control Flags : GBM IL DSE ---- Subsch. ID : 370 Det. descr. : SET OBSERVATION STEP	SET_OBS_STEP  SC003500  0 <hex>	TC	
	ET=+ UT=+00.00.00	SET_BBID  Command Parameter(s) : BUILDING_BLOCK_ID SP01N500  TC Control Flags : GBM IL DSE ---- Subsch. ID : 370 Det. descr. : SET BUILDING BLOCK IDENTIFIER	SET_BBID  SC001500  881e000d <hex>	TC	
	ET=+ UT=+00.00.02	SET_OBS_STEP  Command Parameter(s) : OBSERVATION_STEP SP03N500  TC Control Flags : GBM IL DSE ---- Subsch. ID : 370 Det. descr. : SET OBSERVATION STEP	SET_OBS_STEP  SC003500  1 <hex>	TC	
	ET=+ UT=+00.00.01	SEND_DRCU_COMMAND  Command Parameter(s) : DRCUCOMMAND SPD4N505 OVERRIDE SPD9N505  TC Control Flags : GBM IL DSE ---- Subsch. ID : 370 Det. descr. : SEND A SINGLE COMMAND TO THE DRCU	SEND_DRCU_COMMAND  SCD06505  843c0010 <hex> 0 <hex> (Def)	TC	

Mode\_DcuFunc13\_Phot BDA Integrity Check  
 File: H\_COP\_SPI\_DPIC.xls  
 Author: L.Lucas-hp



Step No.	Time	Activity/Remarks	TC/TLM	Display/ Branch	AIT Comment
	ET=+ UT=+00.00.00	SEND_DRCU_COMMAND  SEND_DRCU_COMMAND  Command Parameter(s) : DRCUCOMMAND           SPD4N505 OVERRIDE        SPD9N505  TC Control Flags :  GBM IL DSE --- -- ---  Subsch. ID : 370 Det. descr. : SEND A SINGLE COMMAND TO THE DRCU	SCD06505  843e0001 <hex> 0 <hex> (Def)	TC	
	ET=+ UT=+00.00.03	SEND_DRCU_COMMAND  SEND_DRCU_COMMAND  Command Parameter(s) : DRCUCOMMAND           SPD4N505 OVERRIDE        SPD9N505  TC Control Flags :  GBM IL DSE --- -- ---  Subsch. ID : 370 Det. descr. : SEND A SINGLE COMMAND TO THE DRCU	SCD06505  843e0000 <hex> 0 <hex> (Def)	TC	
	ET=+ UT=+00.00.00	SEND_DRCU_COMMAND  SEND_DRCU_COMMAND  Command Parameter(s) : DRCUCOMMAND           SPD4N505 OVERRIDE        SPD9N505  TC Control Flags :  GBM IL DSE --- -- ---  Subsch. ID : 370 Det. descr. : SEND A SINGLE COMMAND TO THE DRCU	SCD06505  843c0018 <hex> 0 <hex> (Def)	TC	
	ET=+ UT=+00.00.01	SEND_DRCU_COMMAND  SEND_DRCU_COMMAND  Command Parameter(s) : DRCUCOMMAND           SPD4N505 OVERRIDE        SPD9N505  TC Control Flags :  GBM IL DSE --- -- ---  Subsch. ID : 370 Det. descr. : SEND A SINGLE COMMAND TO THE DRCU	SCD06505  843e0001 <hex> 0 <hex> (Def)	TC	
	ET=+ UT=+00.00.03	SEND_DRCU_COMMAND  SEND_DRCU_COMMAND  Command Parameter(s) : DRCUCOMMAND           SPD4N505 OVERRIDE        SPD9N505  TC Control Flags :  GBM IL DSE --- -- ---  Subsch. ID : 370 Det. descr. : SEND A SINGLE COMMAND TO THE DRCU	SCD06505  843e0000 <hex> 0 <hex> (Def)	TC	



Mode\_DcuFunc13\_Phot BDA Integrity Check  
 File: H\_COP\_SPI\_DPIC.xls  
 Author: L.Lucas-hp



Step No.	Time	Activity/Remarks	TC/TLM	Display/ Branch	AIT Comment
	ET=+ UT=+00.00.02	SEND_DRCU_COMMAND SEND_DRCU_COMMAND  Command Parameter(s) : DRCUCOMMAND SPD4N505 OVERRIDE SPD9N505  TC Control Flags :  Subsch. ID : 370 Det. descr. : SEND A SINGLE COMMAND TO THE DRCU	SCD06505  843c0000 <hex> 0 <hex> (Def)	TC	
	ET=+ UT=+00.00.00	SET_OBS_STEP SET_OBS_STEP  Command Parameter(s) : OBSERVATION_STEP SP03N500  TC Control Flags :  Subsch. ID : 370 Det. descr. : SET OBSERVATION STEP	SC003500  1 <hex>	TC	
	ET=+ UT=+00.00.01	SEND_DRCU_COMMAND SEND_DRCU_COMMAND  Command Parameter(s) : DRCUCOMMAND SPD4N505 OVERRIDE SPD9N505  TC Control Flags :  Subsch. ID : 370 Det. descr. : SEND A SINGLE COMMAND TO THE DRCU	SCD06505  843e0001 <hex> 0 <hex> (Def)	TC	
	ET=+ UT=+00.00.10	SEND_DRCU_COMMAND SEND_DRCU_COMMAND  Command Parameter(s) : DRCUCOMMAND SPD4N505 OVERRIDE SPD9N505  TC Control Flags :  Subsch. ID : 370 Det. descr. : SEND A SINGLE COMMAND TO THE DRCU	SCD06505  843e0000 <hex> 0 <hex> (Def)	TC	
	ET=+ UT=+00.00.01	FLUSH_FIFO FLUSH_FIFO  Command Parameter(s) : FIFOFLAGS SPD0N505  TC Control Flags :  Subsch. ID : 370 Det. descr. : FORCE DPU TO READ SCIENCE DATA FROM FIFOS AND FLUSH CONTENTS	SCD01505  1000 <hex>	TC	
	ET=+ UT=+00.00.01	SET_OBS_STEP SET_OBS_STEP  Command Parameter(s) : OBSERVATION_STEP SP03N500  TC Control Flags :  Subsch. ID : 370 Det. descr. : SET OBSERVATION STEP	SC003500  fff <hex>	TC	

Mode\_DcuFunc13\_Phot BDA Integrity Check  
 File: H\_COP\_SPI\_DPIC.xls  
 Author: L.Lucas-hp



Step No.	Time	Activity/Remarks	TC/TLM	Display/ Branch	AIT Comment
	ET=+ UT=+00.00.01	SET_OBS_STEP  Command Parameter(s) : OBSERVATION_STEP SP03N500  TC Control Flags : GBM IL DSE ---- Subsch. ID : 370 Det. descr. : SET OBSERVATION STEP	SET_OBS_STEP  SC003500  0 <hex>	TC	
	ET=+ UT=+00.00.00	SET_BBID  Command Parameter(s) : BUILDING_BLOCK_ID SP01N500  TC Control Flags : GBM IL DSE ---- Subsch. ID : 370 Det. descr. : SET BUILDING BLOCK IDENTIFIER	SET_BBID  SC001500  80000000 <hex>	TC	
	ET=+ UT=+00.00.02	SET_OBS_STEP  Command Parameter(s) : OBSERVATION_STEP SP03N500  TC Control Flags : GBM IL DSE ---- Subsch. ID : 370 Det. descr. : SET OBSERVATION STEP	SET_OBS_STEP  SC003500  0 <hex>	TC	
	ET=+ UT=+00.00.00	SET_BBID  Command Parameter(s) : BUILDING_BLOCK_ID SP01N500  TC Control Flags : GBM IL DSE ---- Subsch. ID : 370 Det. descr. : SET BUILDING BLOCK IDENTIFIER	SET_BBID  SC001500  8840000e <hex>	TC	
	ET=+ UT=+00.00.02	SET_OBS_STEP  Command Parameter(s) : OBSERVATION_STEP SP03N500  TC Control Flags : GBM IL DSE ---- Subsch. ID : 370 Det. descr. : SET OBSERVATION STEP	SET_OBS_STEP  SC003500  1 <hex>	TC	
	ET=+ UT=+00.00.00	SEND_DRCU_COMMAND  Command Parameter(s) : DRCUCOMMAND SPD4N505 OVERRIDE SPD9N505  TC Control Flags : GBM IL DSE ---- Subsch. ID : 370 Det. descr. : SEND A SINGLE COMMAND TO THE DRCU	SEND_DRCU_COMMAND  SCD06505  840100c8 <hex> 0 <hex> (Def)	TC	

Mode\_DcuFunc13\_Phot BDA Integrity Check  
 File: H\_COP\_SPI\_DPIC.xls  
 Author: L.Lucas-hp



Step No.	Time	Activity/Remarks	TC/TLM	Display/ Branch	AIT Comment
	ET=+ UT=+00.00.01	SEND_DRCU_COMMAND  SEND_DRCU_COMMAND  Command Parameter(s) : DRCUCOMMAND           SPD4N505 OVERRIDE        SPD9N505  TC Control Flags :  GBM IL DSE --- -- ---  Subsch. ID : 370 Det. descr. : SEND A SINGLE COMMAND TO THE DRCU	SCD06505  840200c8 <hex> 0 <hex> (Def)	TC	
	ET=+ UT=+00.00.00	SEND_DRCU_COMMAND  SEND_DRCU_COMMAND  Command Parameter(s) : DRCUCOMMAND           SPD4N505 OVERRIDE        SPD9N505  TC Control Flags :  GBM IL DSE --- -- ---  Subsch. ID : 370 Det. descr. : SEND A SINGLE COMMAND TO THE DRCU	SCD06505  840300c8 <hex> 0 <hex> (Def)	TC	
	ET=+ UT=+00.00.01	SEND_DRCU_COMMAND  SEND_DRCU_COMMAND  Command Parameter(s) : DRCUCOMMAND           SPD4N505 OVERRIDE        SPD9N505  TC Control Flags :  GBM IL DSE --- -- ---  Subsch. ID : 370 Det. descr. : SEND A SINGLE COMMAND TO THE DRCU	SCD06505  840400c8 <hex> 0 <hex> (Def)	TC	
	ET=+ UT=+00.00.01	SET_OBS_STEP  SET_OBS_STEP  Command Parameter(s) : OBSERVATION_STEP        SP03N500  TC Control Flags :  GBM IL DSE --- -- ---  Subsch. ID : 370 Det. descr. : SET OBSERVATION STEP	SC003500  0 <hex>	TC	
	ET=+ UT=+00.00.00	SET_BBID  SET_BBID  Command Parameter(s) : BUILDING_BLOCK_ID        SP01N500  TC Control Flags :  GBM IL DSE --- -- ---  Subsch. ID : 370 Det. descr. : SET BUILDING BLOCK IDENTIFIER	SC001500  80000000 <hex>	TC	
	ET=+ UT=+00.00.03	SET_OBS_STEP  SET_OBS_STEP  Command Parameter(s) : OBSERVATION_STEP        SP03N500  TC Control Flags :  GBM IL DSE --- -- ---  Subsch. ID : 370 Det. descr. : SET OBSERVATION STEP	SC003500  0 <hex>	TC	



Mode\_DcuFunc13\_Phot BDA Integrity Check  
 File: H\_COP\_SPI\_DPIC.xls  
 Author: L.Lucas-hp



Step No.	Time	Activity/Remarks	TC/TLM	Display/ Branch	AIT Comment
	ET=+ UT=+00.00.00	SET_BBID  SET_BBID  Command Parameter(s) : BUILDING_BLOCK_ID SP01N500  TC Control Flags : GBM IL DSE ---- Subsch. ID : 370 Det. descr. : SET BUILDING BLOCK IDENTIFIER	SC001500  881e000e <hex>	TC	
	ET=+ UT=+00.00.02	SET_OBS_STEP  SET_OBS_STEP  Command Parameter(s) : OBSERVATION_STEP SP03N500  TC Control Flags : GBM IL DSE ---- Subsch. ID : 370 Det. descr. : SET OBSERVATION STEP	SC003500  1 <hex>	TC	
	ET=+ UT=+00.00.01	SEND_DRCU_COMMAND  SEND_DRCU_COMMAND  Command Parameter(s) : DRCUCOMMAND SPD4N505 OVERRIDE SPD9N505  TC Control Flags : GBM IL DSE ---- Subsch. ID : 370 Det. descr. : SEND A SINGLE COMMAND TO THE DRCU	SCD06505  843c0010 <hex> 0 <hex> (Def)	TC	
	ET=+ UT=+00.00.00	SEND_DRCU_COMMAND  SEND_DRCU_COMMAND  Command Parameter(s) : DRCUCOMMAND SPD4N505 OVERRIDE SPD9N505  TC Control Flags : GBM IL DSE ---- Subsch. ID : 370 Det. descr. : SEND A SINGLE COMMAND TO THE DRCU	SCD06505  843e0001 <hex> 0 <hex> (Def)	TC	
	ET=+ UT=+00.00.03	SEND_DRCU_COMMAND  SEND_DRCU_COMMAND  Command Parameter(s) : DRCUCOMMAND SPD4N505 OVERRIDE SPD9N505  TC Control Flags : GBM IL DSE ---- Subsch. ID : 370 Det. descr. : SEND A SINGLE COMMAND TO THE DRCU	SCD06505  843e0000 <hex> 0 <hex> (Def)	TC	
	ET=+ UT=+00.00.00	SEND_DRCU_COMMAND  SEND_DRCU_COMMAND  Command Parameter(s) : DRCUCOMMAND SPD4N505 OVERRIDE SPD9N505  TC Control Flags : GBM IL DSE ---- Subsch. ID : 370 Det. descr. : SEND A SINGLE COMMAND TO THE DRCU	SCD06505  843c0018 <hex> 0 <hex> (Def)	TC	

Mode\_DcuFunc13\_Phot BDA Integrity Check  
 File: H\_COP\_SPI\_DPIC.xls  
 Author: L.Lucas-hp



Step No.	Time	Activity/Remarks	TC/TLM	Display/ Branch	AIT Comment
	ET=+ UT=+00.00.01	SEND_DRCU_COMMAND  SEND_DRCU_COMMAND  Command Parameter(s) : DRCUCOMMAND           SPD4N505 OVERRIDE           SPD9N505  TC Control Flags :  GBM IL DSE --- -- ---  Subsch. ID : 370 Det. descr. : SEND A SINGLE COMMAND TO THE DRCU	SCD06505  843e0001 <hex> 0 <hex> (Def)	TC	
	ET=+ UT=+00.00.03	SEND_DRCU_COMMAND  SEND_DRCU_COMMAND  Command Parameter(s) : DRCUCOMMAND           SPD4N505 OVERRIDE           SPD9N505  TC Control Flags :  GBM IL DSE --- -- ---  Subsch. ID : 370 Det. descr. : SEND A SINGLE COMMAND TO THE DRCU	SCD06505  843e0000 <hex> 0 <hex> (Def)	TC	
	ET=+ UT=+00.00.01	FLUSH_FIFO  FLUSH_FIFO  Command Parameter(s) : FIFOFLAGS           SPD0N505  TC Control Flags :  GBM IL DSE --- -- ---  Subsch. ID : 370 Det. descr. : FORCE DPU TO READ SCIENCE DATA FROM FIFOS AND FLUSH CONTENTS	SCD01505  1000 <hex>	TC	
	ET=+ UT=+00.00.01	SEND_DRCU_COMMAND  SEND_DRCU_COMMAND  Command Parameter(s) : DRCUCOMMAND           SPD4N505 OVERRIDE           SPD9N505  TC Control Flags :  GBM IL DSE --- -- ---  Subsch. ID : 370 Det. descr. : SEND A SINGLE COMMAND TO THE DRCU	SCD06505  843c0000 <hex> 0 <hex> (Def)	TC	
	ET=+ UT=+00.00.00	SET_OBS_STEP  SET_OBS_STEP  Command Parameter(s) : OBSERVATION_STEP           SP03N500  TC Control Flags :  GBM IL DSE --- -- ---  Subsch. ID : 370 Det. descr. : SET OBSERVATION STEP	SC003500  0 <hex>	TC	
	ET=+ UT=+00.00.01	SET_BBID  SET_BBID  Command Parameter(s) : BUILDING_BLOCK_ID           SP01N500  TC Control Flags :  GBM IL DSE --- -- ---  Subsch. ID : 370 Det. descr. : SET BUILDING BLOCK IDENTIFIER	SC001500  80000000 <hex>	TC	

Mode\_DcuFunc13\_Phot BDA Integrity Check  
 File: H\_COP\_SPI\_DPIC.xls  
 Author: L.Lucas-hp



Step No.	Time	Activity/Remarks	TC/TLM	Display/ Branch	AIT Comment
	ET=+ UT=+00.00.02	SET_OBS_STEP  Command Parameter(s) : OBSERVATION_STEP SP03N500  TC Control Flags : GBM IL DSE ----  Subsch. ID : 370 Det. descr. : SET OBSERVATION STEP	SET_OBS_STEP  SC003500  0 <hex>	TC	
	ET=+ UT=+00.00.00	SET_BBID  Command Parameter(s) : BUILDING_BLOCK_ID SP01N500  TC Control Flags : GBM IL DSE ----  Subsch. ID : 370 Det. descr. : SET BUILDING BLOCK IDENTIFIER	SET_BBID  SC001500  8800000e <hex>	TC	
	ET=+ UT=+00.00.02	SEND_DRCU_COMMAND  Command Parameter(s) : DRCUCOMMAND SPD4N505 OVERRIDE SPD9N505  TC Control Flags : GBM IL DSE ----  Subsch. ID : 370 Det. descr. : SEND A SINGLE COMMAND TO THE DRCU	SEND_DRCU_COMMAND  SCD06505  843c0000 <hex> 0 <hex> (Def)	TC	
	ET=+ UT=+00.00.00	SET_OBS_STEP  Command Parameter(s) : OBSERVATION_STEP SP03N500  TC Control Flags : GBM IL DSE ----  Subsch. ID : 370 Det. descr. : SET OBSERVATION STEP	SET_OBS_STEP  SC003500  1 <hex>	TC	
	ET=+ UT=+00.00.01	SEND_DRCU_COMMAND  Command Parameter(s) : DRCUCOMMAND SPD4N505 OVERRIDE SPD9N505  TC Control Flags : GBM IL DSE ----  Subsch. ID : 370 Det. descr. : SEND A SINGLE COMMAND TO THE DRCU	SEND_DRCU_COMMAND  SCD06505  843e0001 <hex> 0 <hex> (Def)	TC	
	ET=+ UT=+00.00.10	SEND_DRCU_COMMAND  Command Parameter(s) : DRCUCOMMAND SPD4N505 OVERRIDE SPD9N505  TC Control Flags : GBM IL DSE ----  Subsch. ID : 370 Det. descr. : SEND A SINGLE COMMAND TO THE DRCU	SEND_DRCU_COMMAND  SCD06505  843e0000 <hex> 0 <hex> (Def)	TC	





Mode\_DcuFunc13\_Phot BDA Integrity Check  
 File: H\_COP\_SPI\_DPIC.xls  
 Author: L.Lucas-hp



Step No.	Time	Activity/Remarks	TC/TLM	Display/ Branch	AIT Comment
	ET=+ UT=+00.00.00	SET_BBID  Command Parameter(s) : BUILDING_BLOCK_ID SP01N500  TC Control Flags : GBM IL DSE ---- Subsch. ID : 370 Det. descr. : SET BUILDING BLOCK IDENTIFIER	SET_BBID  SC001500  80000000 <hex>	TC	
	ET=+ UT=+00.00.03	SET_OBS_STEP  Command Parameter(s) : OBSERVATION_STEP SP03N500  TC Control Flags : GBM IL DSE ---- Subsch. ID : 370 Det. descr. : SET OBSERVATION STEP	SET_OBS_STEP  SC003500  0 <hex>	TC	
	ET=+ UT=+00.00.00	SET_BBID  Command Parameter(s) : BUILDING_BLOCK_ID SP01N500  TC Control Flags : GBM IL DSE ---- Subsch. ID : 370 Det. descr. : SET BUILDING BLOCK IDENTIFIER	SET_BBID  SC001500  881e000f <hex>	TC	
	ET=+ UT=+00.00.02	SET_OBS_STEP  Command Parameter(s) : OBSERVATION_STEP SP03N500  TC Control Flags : GBM IL DSE ---- Subsch. ID : 370 Det. descr. : SET OBSERVATION STEP	SET_OBS_STEP  SC003500  1 <hex>	TC	
	ET=+ UT=+00.00.01	SEND_DRCU_COMMAND  Command Parameter(s) : DRCUCOMMAND SPD4N505 OVERRIDE SPD9N505  TC Control Flags : GBM IL DSE ---- Subsch. ID : 370 Det. descr. : SEND A SINGLE COMMAND TO THE DRCU	SEND_DRCU_COMMAND  SCD06505  843c0010 <hex> 0 <hex> (Def)	TC	
	ET=+ UT=+00.00.00	SEND_DRCU_COMMAND  Command Parameter(s) : DRCUCOMMAND SPD4N505 OVERRIDE SPD9N505  TC Control Flags : GBM IL DSE ---- Subsch. ID : 370 Det. descr. : SEND A SINGLE COMMAND TO THE DRCU	SEND_DRCU_COMMAND  SCD06505  843e0001 <hex> 0 <hex> (Def)	TC	

Mode\_DcuFunc13\_Phot BDA Integrity Check  
 File: H\_COP\_SPI\_DPIC.xls  
 Author: L.Lucas-hp



Step No.	Time	Activity/Remarks	TC/TLM	Display/ Branch	AIT Comment
	ET=+ UT=+00.00.03	SEND_DRCU_COMMAND  SEND_DRCU_COMMAND  Command Parameter(s) : DRCUCOMMAND           SPD4N505 OVERRIDE        SPD9N505  TC Control Flags :  GBM IL DSE --- -- ---  Subsch. ID : 370 Det. descr. : SEND A SINGLE COMMAND TO THE DRCU	SCD06505  843e0000 <hex> 0 <hex> (Def)	TC	
	ET=+ UT=+00.00.00	SEND_DRCU_COMMAND  SEND_DRCU_COMMAND  Command Parameter(s) : DRCUCOMMAND           SPD4N505 OVERRIDE        SPD9N505  TC Control Flags :  GBM IL DSE --- -- ---  Subsch. ID : 370 Det. descr. : SEND A SINGLE COMMAND TO THE DRCU	SCD06505  843c0018 <hex> 0 <hex> (Def)	TC	
	ET=+ UT=+00.00.01	SEND_DRCU_COMMAND  SEND_DRCU_COMMAND  Command Parameter(s) : DRCUCOMMAND           SPD4N505 OVERRIDE        SPD9N505  TC Control Flags :  GBM IL DSE --- -- ---  Subsch. ID : 370 Det. descr. : SEND A SINGLE COMMAND TO THE DRCU	SCD06505  843e0001 <hex> 0 <hex> (Def)	TC	
	ET=+ UT=+00.00.03	SEND_DRCU_COMMAND  SEND_DRCU_COMMAND  Command Parameter(s) : DRCUCOMMAND           SPD4N505 OVERRIDE        SPD9N505  TC Control Flags :  GBM IL DSE --- -- ---  Subsch. ID : 370 Det. descr. : SEND A SINGLE COMMAND TO THE DRCU	SCD06505  843e0000 <hex> 0 <hex> (Def)	TC	
	ET=+ UT=+00.00.01	FLUSH_FIFO  FLUSH_FIFO  Command Parameter(s) : FIFOFLAGS            SPD0N505  TC Control Flags :  GBM IL DSE --- -- ---  Subsch. ID : 370 Det. descr. : FORCE DPU TO READ SCIENCE DATA FROM FIFOS AND FLUSH CONTENTS	SCD01505  1000 <hex>	TC	

Mode\_DcuFunc13\_Phot BDA Integrity Check  
 File: H\_COP\_SPI\_DPIC.xls  
 Author: L.Lucas-hp



Step No.	Time	Activity/Remarks	TC/TLM	Display/ Branch	AIT Comment
	ET=+ UT=+00.00.01	SEND_DRCU_COMMAND  SEND_DRCU_COMMAND  Command Parameter(s) : DRCUCOMMAND           SPD4N505 OVERRIDE        SPD9N505  TC Control Flags :  GBM IL DSE --- -- ---  Subsch. ID : 370 Det. descr. : SEND A SINGLE COMMAND TO THE DRCU	SCD06505  843c0000 <hex> 0 <hex> (Def)	TC	
	ET=+ UT=+00.00.00	SET_OBS_STEP  SET_OBS_STEP  Command Parameter(s) : OBSERVATION_STEP        SP03N500  TC Control Flags :  GBM IL DSE --- -- ---  Subsch. ID : 370 Det. descr. : SET OBSERVATION STEP	SC003500  0 <hex>	TC	
	ET=+ UT=+00.00.01	SET_BBID  SET_BBID  Command Parameter(s) : BUILDING_BLOCK_ID        SP01N500  TC Control Flags :  GBM IL DSE --- -- ---  Subsch. ID : 370 Det. descr. : SET BUILDING BLOCK IDENTIFIER	SC001500  80000000 <hex>	TC	
	ET=+ UT=+00.00.02	SET_OBS_STEP  SET_OBS_STEP  Command Parameter(s) : OBSERVATION_STEP        SP03N500  TC Control Flags :  GBM IL DSE --- -- ---  Subsch. ID : 370 Det. descr. : SET OBSERVATION STEP	SC003500  0 <hex>	TC	
	ET=+ UT=+00.00.00	SET_BBID  SET_BBID  Command Parameter(s) : BUILDING_BLOCK_ID        SP01N500  TC Control Flags :  GBM IL DSE --- -- ---  Subsch. ID : 370 Det. descr. : SET BUILDING BLOCK IDENTIFIER	SC001500  8800000f <hex>	TC	
	ET=+ UT=+00.00.02	SEND_DRCU_COMMAND  SEND_DRCU_COMMAND  Command Parameter(s) : DRCUCOMMAND           SPD4N505 OVERRIDE        SPD9N505  TC Control Flags :  GBM IL DSE --- -- ---  Subsch. ID : 370 Det. descr. : SEND A SINGLE COMMAND TO THE DRCU	SCD06505  843c0000 <hex> 0 <hex> (Def)	TC	



Mode\_DcuFunc13\_Phot BDA Integrity Check  
 File: H\_COP\_SPI\_DPIC.xls  
 Author: L.Lucas-hp



Step No.	Time	Activity/Remarks	TC/TLM	Display/ Branch	AIT Comment	
	ET=+ UT=+00.00.00	SET_OBS_STEP  Command Parameter(s) : OBSERVATION_STEP  TC Control Flags :  Subsch. ID : 370 Det. descr. : SET OBSERVATION STEP	SET_OBS_STEP  SP03N500  GBM IL DSE ----	SC003500  1 <hex>	TC	
	ET=+ UT=+00.00.01	SEND_DRCU_COMMAND  Command Parameter(s) : DRCUCOMMAND OVERRIDE  TC Control Flags :  Subsch. ID : 370 Det. descr. : SEND A SINGLE COMMAND TO THE DRCU	SEND_DRCU_COMMAND  SPD4N505 SPD9N505  GBM IL DSE --- --	SCD06505  843e0001 <hex> 0 <hex> (Def)	TC	
	ET=+ UT=+00.00.10	SEND_DRCU_COMMAND  Command Parameter(s) : DRCUCOMMAND OVERRIDE  TC Control Flags :  Subsch. ID : 370 Det. descr. : SEND A SINGLE COMMAND TO THE DRCU	SEND_DRCU_COMMAND  SPD4N505 SPD9N505  GBM IL DSE --- --	SCD06505  843e0000 <hex> 0 <hex> (Def)	TC	
	ET=+ UT=+00.00.01	FLUSH_FIFO  Command Parameter(s) : FIFOFLAGS  TC Control Flags :  Subsch. ID : 370 Det. descr. : FORCE DPU TO READ SCIENCE DATA FROM FIFOS AND FLUSH CONTENTS	FLUSH_FIFO  SPD0N505  GBM IL DSE --- --	SCD01505  1000 <hex>	TC	
	ET=+ UT=+00.00.01	SET_OBS_STEP  Command Parameter(s) : OBSERVATION_STEP  TC Control Flags :  Subsch. ID : 370 Det. descr. : SET OBSERVATION STEP	SET_OBS_STEP  SP03N500  GBM IL DSE ----	SC003500  ffff <hex>	TC	
	ET=+ UT=+00.00.01	SET_OBS_STEP  Command Parameter(s) : OBSERVATION_STEP  TC Control Flags :  Subsch. ID : 370 Det. descr. : SET OBSERVATION STEP	SET_OBS_STEP  SP03N500  GBM IL DSE --- --	SC003500  0 <hex>	TC	

Mode\_DcuFunc13\_Phot BDA Integrity Check  
 File: H\_COP\_SPI\_DPIC.xls  
 Author: L.Lucas-hp



Step No.	Time	Activity/Remarks	TC/TLM	Display/ Branch	AIT Comment
	ET=+ UT=+00.00.00	SET_BBID  SET_BBID  Command Parameter(s) : BUILDING_BLOCK_ID SP01N500  TC Control Flags : GBM IL DSE ---- Subsch. ID : 370 Det. descr. : SET BUILDING BLOCK IDENTIFIER	SC001500  80000000 <hex>	TC	
	ET=+ UT=+00.00.02	SET_OBS_STEP  SET_OBS_STEP  Command Parameter(s) : OBSERVATION_STEP SP03N500  TC Control Flags : GBM IL DSE ---- Subsch. ID : 370 Det. descr. : SET OBSERVATION STEP	SC003500  0 <hex>	TC	
	ET=+ UT=+00.00.00	SET_BBID  SET_BBID  Command Parameter(s) : BUILDING_BLOCK_ID SP01N500  TC Control Flags : GBM IL DSE ---- Subsch. ID : 370 Det. descr. : SET BUILDING BLOCK IDENTIFIER	SC001500  88400010 <hex>	TC	
	ET=+ UT=+00.00.02	SET_OBS_STEP  SET_OBS_STEP  Command Parameter(s) : OBSERVATION_STEP SP03N500  TC Control Flags : GBM IL DSE ---- Subsch. ID : 370 Det. descr. : SET OBSERVATION STEP	SC003500  1 <hex>	TC	
	ET=+ UT=+00.00.00	SEND_DRCU_COMMAND  SEND_DRCU_COMMAND  Command Parameter(s) : DRCUCOMMAND SPD4N505 OVERRIDE SPD9N505  TC Control Flags : GBM IL DSE ---- Subsch. ID : 370 Det. descr. : SEND A SINGLE COMMAND TO THE DRCU	SCD06505  840100fa <hex> 0 <hex> (Def)	TC	
	ET=+ UT=+00.00.01	SEND_DRCU_COMMAND  SEND_DRCU_COMMAND  Command Parameter(s) : DRCUCOMMAND SPD4N505 OVERRIDE SPD9N505  TC Control Flags : GBM IL DSE ---- Subsch. ID : 370 Det. descr. : SEND A SINGLE COMMAND TO THE DRCU	SCD06505  840200fa <hex> 0 <hex> (Def)	TC	

Mode\_DcuFunc13\_Phot BDA Integrity Check  
 File: H\_COP\_SPI\_DPIC.xls  
 Author: L.Lucas-hp



Step No.	Time	Activity/Remarks	TC/TLM	Display/ Branch	AIT Comment
	ET=+ UT=+00.00.00	SEND_DRCU_COMMAND  SEND_DRCU_COMMAND  Command Parameter(s) : DRCUCOMMAND           SPD4N505 OVERRIDE        SPD9N505  TC Control Flags :  GBM IL DSE ---- --  Subsch. ID : 370 Det. descr. : SEND A SINGLE COMMAND TO THE DRCU	SCD06505  840300fa <hex> 0 <hex> (Def)	TC	
	ET=+ UT=+00.00.01	SEND_DRCU_COMMAND  SEND_DRCU_COMMAND  Command Parameter(s) : DRCUCOMMAND           SPD4N505 OVERRIDE        SPD9N505  TC Control Flags :  GBM IL DSE ---- --  Subsch. ID : 370 Det. descr. : SEND A SINGLE COMMAND TO THE DRCU	SCD06505  840400fa <hex> 0 <hex> (Def)	TC	
	ET=+ UT=+00.00.01	SET_OBS_STEP  SET_OBS_STEP  Command Parameter(s) : OBSERVATION_STEP        SP03N500  TC Control Flags :  GBM IL DSE ---- --  Subsch. ID : 370 Det. descr. : SET OBSERVATION STEP	SC003500  0 <hex>	TC	
	ET=+ UT=+00.00.00	SET_BBID  SET_BBID  Command Parameter(s) : BUILDING_BLOCK_ID        SP01N500  TC Control Flags :  GBM IL DSE ---- --  Subsch. ID : 370 Det. descr. : SET BUILDING BLOCK IDENTIFIER	SC001500  80000000 <hex>	TC	
	ET=+ UT=+00.00.03	SET_OBS_STEP  SET_OBS_STEP  Command Parameter(s) : OBSERVATION_STEP        SP03N500  TC Control Flags :  GBM IL DSE ---- --  Subsch. ID : 370 Det. descr. : SET OBSERVATION STEP	SC003500  0 <hex>	TC	
	ET=+ UT=+00.00.00	SET_BBID  SET_BBID  Command Parameter(s) : BUILDING_BLOCK_ID        SP01N500  TC Control Flags :  GBM IL DSE ---- --  Subsch. ID : 370 Det. descr. : SET BUILDING BLOCK IDENTIFIER	SC001500  881e0010 <hex>	TC	

Mode\_DcuFunc13\_Phot BDA Integrity Check  
 File: H\_COP\_SPI\_DPIC.xls  
 Author: L.Lucas-hp



Step No.	Time	Activity/Remarks	TC/TLM	Display/ Branch	AIT Comment
	ET=+ UT=+00.00.02	SET_OBS_STEP  Command Parameter(s) : OBSERVATION_STEP                      SP03N500  TC Control Flags :  GBM IL DSE --- -- ---  Subsch. ID : 370 Det. descr. : SET OBSERVATION STEP	SET_OBS_STEP  SC003500  1 <hex>	TC	
	ET=+ UT=+00.00.01	SEND_DRCU_COMMAND  Command Parameter(s) : DRCUCOMMAND                      SPD4N505 OVERRIDE                            SPD9N505  TC Control Flags :  GBM IL DSE --- -- ---  Subsch. ID : 370 Det. descr. : SEND A SINGLE COMMAND TO THE DRCU	SEND_DRCU_COMMAND  SCD06505  843c0010 <hex> 0 <hex> (Def)	TC	
	ET=+ UT=+00.00.00	SEND_DRCU_COMMAND  Command Parameter(s) : DRCUCOMMAND                      SPD4N505 OVERRIDE                            SPD9N505  TC Control Flags :  GBM IL DSE --- -- ---  Subsch. ID : 370 Det. descr. : SEND A SINGLE COMMAND TO THE DRCU	SEND_DRCU_COMMAND  SCD06505  843e0001 <hex> 0 <hex> (Def)	TC	
	ET=+ UT=+00.00.03	SEND_DRCU_COMMAND  Command Parameter(s) : DRCUCOMMAND                      SPD4N505 OVERRIDE                            SPD9N505  TC Control Flags :  GBM IL DSE --- -- ---  Subsch. ID : 370 Det. descr. : SEND A SINGLE COMMAND TO THE DRCU	SEND_DRCU_COMMAND  SCD06505  843e0000 <hex> 0 <hex> (Def)	TC	
	ET=+ UT=+00.00.00	SEND_DRCU_COMMAND  Command Parameter(s) : DRCUCOMMAND                      SPD4N505 OVERRIDE                            SPD9N505  TC Control Flags :  GBM IL DSE --- -- ---  Subsch. ID : 370 Det. descr. : SEND A SINGLE COMMAND TO THE DRCU	SEND_DRCU_COMMAND  SCD06505  843c0018 <hex> 0 <hex> (Def)	TC	
	ET=+ UT=+00.00.01	SEND_DRCU_COMMAND  Command Parameter(s) : DRCUCOMMAND                      SPD4N505 OVERRIDE                            SPD9N505  TC Control Flags :  GBM IL DSE --- -- ---  Subsch. ID : 370 Det. descr. : SEND A SINGLE COMMAND TO THE DRCU	SEND_DRCU_COMMAND  SCD06505  843e0001 <hex> 0 <hex> (Def)	TC	

Mode\_DcuFunc13\_Phot BDA Integrity Check  
 File: H\_COP\_SPI\_DPIC.xls  
 Author: L.Lucas-hp



Step No.	Time	Activity/Remarks	TC/TLM	Display/ Branch	AIT Comment
	ET=+ UT=+00.00.03	SEND_DRCU_COMMAND  SEND_DRCU_COMMAND  Command Parameter(s) : DRCUCOMMAND SPD4N505 OVERRIDE SPD9N505  TC Control Flags :  GBM IL DSE ----  Subsch. ID : 370 Det. descr. : SEND A SINGLE COMMAND TO THE DRCU	SCD06505  843e0000 <hex> 0 <hex> (Def)	TC	
	ET=+ UT=+00.00.01	FLUSH_FIFO  FLUSH_FIFO  Command Parameter(s) : FIFOFLAGS SPD0N505  TC Control Flags :  GBM IL DSE ----  Subsch. ID : 370 Det. descr. : FORCE DPU TO READ SCIENCE DATA FROM FIFOS AND FLUSH CONTENTS	SCD01505  1000 <hex>	TC	
	ET=+ UT=+00.00.01	SEND_DRCU_COMMAND  SEND_DRCU_COMMAND  Command Parameter(s) : DRCUCOMMAND SPD4N505 OVERRIDE SPD9N505  TC Control Flags :  GBM IL DSE ----  Subsch. ID : 370 Det. descr. : SEND A SINGLE COMMAND TO THE DRCU	SCD06505  843c0000 <hex> 0 <hex> (Def)	TC	
	ET=+ UT=+00.00.00	SET_OBS_STEP  SET_OBS_STEP  Command Parameter(s) : OBSERVATION_STEP SP03N500  TC Control Flags :  GBM IL DSE ----  Subsch. ID : 370 Det. descr. : SET OBSERVATION STEP	SC003500  0 <hex>	TC	
	ET=+ UT=+00.00.01	SET_BBID  SET_BBID  Command Parameter(s) : BUILDING_BLOCK_ID SP01N500  TC Control Flags :  GBM IL DSE ----  Subsch. ID : 370 Det. descr. : SET BUILDING BLOCK IDENTIFIER	SC001500  80000000 <hex>	TC	
	ET=+ UT=+00.00.02	SET_OBS_STEP  SET_OBS_STEP  Command Parameter(s) : OBSERVATION_STEP SP03N500  TC Control Flags :  GBM IL DSE ----  Subsch. ID : 370 Det. descr. : SET OBSERVATION STEP	SC003500  0 <hex>	TC	

Mode\_DcuFunc13\_Phot BDA Integrity Check  
 File: H\_COP\_SPI\_DPIC.xls  
 Author: L.Lucas-hp



Step No.	Time	Activity/Remarks	TC/TLM	Display/ Branch	AIT Comment	
	ET=+ UT=+00.00.00	SET_BBID  Command Parameter(s) : BUILDING_BLOCK_ID  TC Control Flags :  Subsch. ID : 370 Det. descr. : SET BUILDING BLOCK IDENTIFIER	SET_BBID  SP01N500  GBM IL DSE ----	SC001500  88000010 <hex>	TC	
	ET=+ UT=+00.00.02	SEND_DRCU_COMMAND  Command Parameter(s) : DRCUCOMMAND OVERRIDE  TC Control Flags :  Subsch. ID : 370 Det. descr. : SEND A SINGLE COMMAND TO THE DRCU	SEND_DRCU_COMMAND  SPD4N505 SPD9N505  GBM IL DSE --- --	SCD06505  843c0000 <hex> 0 <hex> (Def)	TC	
	ET=+ UT=+00.00.00	SET_OBS_STEP  Command Parameter(s) : OBSERVATION_STEP  TC Control Flags :  Subsch. ID : 370 Det. descr. : SET OBSERVATION STEP	SET_OBS_STEP  SP03N500  GBM IL DSE --- --	SC003500  1 <hex>	TC	
	ET=+ UT=+00.00.01	SEND_DRCU_COMMAND  Command Parameter(s) : DRCUCOMMAND OVERRIDE  TC Control Flags :  Subsch. ID : 370 Det. descr. : SEND A SINGLE COMMAND TO THE DRCU	SEND_DRCU_COMMAND  SPD4N505 SPD9N505  GBM IL DSE --- --	SCD06505  843e0001 <hex> 0 <hex> (Def)	TC	
	ET=+ UT=+00.00.10	SEND_DRCU_COMMAND  Command Parameter(s) : DRCUCOMMAND OVERRIDE  TC Control Flags :  Subsch. ID : 370 Det. descr. : SEND A SINGLE COMMAND TO THE DRCU	SEND_DRCU_COMMAND  SPD4N505 SPD9N505  GBM IL DSE --- --	SCD06505  843e0000 <hex> 0 <hex> (Def)	TC	
	ET=+ UT=+00.00.01	FLUSH_FIFO  Command Parameter(s) : FIFOFLAGS  TC Control Flags :  Subsch. ID : 370 Det. descr. : FORCE DPU TO READ SCIENCE DATA FROM FIFOS AND FLUSH CONTENTS	FLUSH_FIFO  SPD0N505  GBM IL DSE --- --	SCD01505  1000 <hex>	TC	

Mode\_DcuFunc13\_Phot BDA Integrity Check  
 File: H\_COP\_SPI\_DPIC.xls  
 Author: L.Lucas-hp



Step No.	Time	Activity/Remarks	TC/TLM	Display/ Branch	AIT Comment
	ET=+ UT=+00.00.01	SET_OBS_STEP  Command Parameter(s) : OBSERVATION_STEP SP03N500  TC Control Flags : GBM IL DSE ---- Subsch. ID : 370 Det. descr. : SET OBSERVATION STEP	SET_OBS_STEP  SC003500  ffff <hex>	TC	
	ET=+ UT=+00.00.01	SET_OBS_STEP  Command Parameter(s) : OBSERVATION_STEP SP03N500  TC Control Flags : GBM IL DSE ---- Subsch. ID : 370 Det. descr. : SET OBSERVATION STEP	SET_OBS_STEP  SC003500  0 <hex>	TC	
	ET=+ UT=+00.00.00	SET_BBID  Command Parameter(s) : BUILDING_BLOCK_ID SP01N500  TC Control Flags : GBM IL DSE ---- Subsch. ID : 370 Det. descr. : SET BUILDING BLOCK IDENTIFIER	SET_BBID  SC001500  80000000 <hex>	TC	
	ET=+ UT=+00.00.02	SET_OBS_STEP  Command Parameter(s) : OBSERVATION_STEP SP03N500  TC Control Flags : GBM IL DSE ---- Subsch. ID : 370 Det. descr. : SET OBSERVATION STEP	SET_OBS_STEP  SC003500  0 <hex>	TC	
	ET=+ UT=+00.00.00	SET_BBID  Command Parameter(s) : BUILDING_BLOCK_ID SP01N500  TC Control Flags : GBM IL DSE ---- Subsch. ID : 370 Det. descr. : SET BUILDING BLOCK IDENTIFIER	SET_BBID  SC001500  88260002 <hex>	TC	
	ET=+ UT=+00.00.02	SET_OBS_STEP  Command Parameter(s) : OBSERVATION_STEP SP03N500  TC Control Flags : GBM IL DSE ---- Subsch. ID : 370 Det. descr. : SET OBSERVATION STEP	SET_OBS_STEP  SC003500  1 <hex>	TC	

Mode\_DcuFunc13\_Phot BDA Integrity Check  
 File: H\_COP\_SPI\_DPIC.xls  
 Author: L.Lucas-hp



Step No.	Time	Activity/Remarks	TC/TLM	Display/ Branch	AIT Comment
	ET=+ UT=+00.00.01	SEND_DRCU_COMMAND  SEND_DRCU_COMMAND  Command Parameter(s) : DRCUCOMMAND SPD4N505 OVERRIDE SPD9N505  TC Control Flags :  GBM IL DSE ----  Subsch. ID : 370 Det. descr. : SEND A SINGLE COMMAND TO THE DRCU	SCD06505  840000ff <hex> 0 <hex> (Def)	TC	
	ET=+ UT=+00.00.01	SEND_DRCU_COMMAND  SEND_DRCU_COMMAND  Command Parameter(s) : DRCUCOMMAND SPD4N505 OVERRIDE SPD9N505  TC Control Flags :  GBM IL DSE ----  Subsch. ID : 370 Det. descr. : SEND A SINGLE COMMAND TO THE DRCU	SCD06505  843c0000 <hex> 0 <hex> (Def)	TC	
	ET=+ UT=+00.00.01	SEND_DRCU_COMMAND  SEND_DRCU_COMMAND  Command Parameter(s) : DRCUCOMMAND SPD4N505 OVERRIDE SPD9N505  TC Control Flags :  GBM IL DSE ----  Subsch. ID : 370 Det. descr. : SEND A SINGLE COMMAND TO THE DRCU	SCD06505  843d0000 <hex> 0 <hex> (Def)	TC	
	ET=+ UT=+00.00.01	SEND_DRCU_COMMAND  SEND_DRCU_COMMAND  Command Parameter(s) : DRCUCOMMAND SPD4N505 OVERRIDE SPD9N505  TC Control Flags :  GBM IL DSE ----  Subsch. ID : 370 Det. descr. : SEND A SINGLE COMMAND TO THE DRCU	SCD06505  84190095 <hex> 0 <hex> (Def)	TC	
	ET=+ UT=+00.00.01	SEND_DRCU_COMMAND  SEND_DRCU_COMMAND  Command Parameter(s) : DRCUCOMMAND SPD4N505 OVERRIDE SPD9N505  TC Control Flags :  GBM IL DSE ----  Subsch. ID : 370 Det. descr. : SEND A SINGLE COMMAND TO THE DRCU	SCD06505  84180006 <hex> 0 <hex> (Def)	TC	



Mode\_DcuFunc13\_Phot BDA Integrity Check  
 File: H\_COP\_SPI\_DPIC.xls  
 Author: L.Lucas-hp



Step No.	Time	Activity/Remarks	TC/TLM	Display/ Branch	AIT Comment
	ET=+ UT=+00.00.01	SEND_DRCU_COMMAND  SEND_DRCU_COMMAND  Command Parameter(s) : DRCUCOMMAND           SPD4N505 OVERRIDE        SPD9N505  TC Control Flags :  GBM IL DSE --- -- ---  Subsch. ID : 370 Det. descr. : SEND A SINGLE COMMAND TO THE DRCU	SCD06505  8401003e <hex> 0 <hex> (Def)	TC	
	ET=+ UT=+00.00.01	SEND_DRCU_COMMAND  SEND_DRCU_COMMAND  Command Parameter(s) : DRCUCOMMAND           SPD4N505 OVERRIDE        SPD9N505  TC Control Flags :  GBM IL DSE --- -- ---  Subsch. ID : 370 Det. descr. : SEND A SINGLE COMMAND TO THE DRCU	SCD06505  8402003e <hex> 0 <hex> (Def)	TC	
	ET=+ UT=+00.00.01	SEND_DRCU_COMMAND  SEND_DRCU_COMMAND  Command Parameter(s) : DRCUCOMMAND           SPD4N505 OVERRIDE        SPD9N505  TC Control Flags :  GBM IL DSE --- -- ---  Subsch. ID : 370 Det. descr. : SEND A SINGLE COMMAND TO THE DRCU	SCD06505  8403003e <hex> 0 <hex> (Def)	TC	
	ET=+ UT=+00.00.01	SEND_DRCU_COMMAND  SEND_DRCU_COMMAND  Command Parameter(s) : DRCUCOMMAND           SPD4N505 OVERRIDE        SPD9N505  TC Control Flags :  GBM IL DSE --- -- ---  Subsch. ID : 370 Det. descr. : SEND A SINGLE COMMAND TO THE DRCU	SCD06505  841a0080 <hex> 0 <hex> (Def)	TC	
	ET=+ UT=+00.00.01	SEND_DRCU_COMMAND  SEND_DRCU_COMMAND  Command Parameter(s) : DRCUCOMMAND           SPD4N505 OVERRIDE        SPD9N505  TC Control Flags :  GBM IL DSE --- -- ---  Subsch. ID : 370 Det. descr. : SEND A SINGLE COMMAND TO THE DRCU	SCD06505  841b0080 <hex> 0 <hex> (Def)	TC	

Mode\_DcuFunc13\_Phot BDA Integrity Check  
 File: H\_COP\_SPI\_DPIC.xls  
 Author: L.Lucas-hp



Step No.	Time	Activity/Remarks	TC/TLM	Display/ Branch	AIT Comment
	ET=+ UT=+00.00.01	SEND_DRCU_COMMAND  SEND_DRCU_COMMAND  Command Parameter(s) : DRCUCOMMAND           SPD4N505 OVERRIDE        SPD9N505  TC Control Flags :  GBM IL DSE --- -- ---  Subsch. ID : 370 Det. descr. : SEND A SINGLE COMMAND TO THE DRCU	SCD06505  841c0080 <hex> 0 <hex> (Def)	TC	
	ET=+ UT=+00.00.01	SEND_DRCU_COMMAND  SEND_DRCU_COMMAND  Command Parameter(s) : DRCUCOMMAND           SPD4N505 OVERRIDE        SPD9N505  TC Control Flags :  GBM IL DSE --- -- ---  Subsch. ID : 370 Det. descr. : SEND A SINGLE COMMAND TO THE DRCU	SCD06505  8404003e <hex> 0 <hex> (Def)	TC	
	ET=+ UT=+00.00.01	SEND_DRCU_COMMAND  SEND_DRCU_COMMAND  Command Parameter(s) : DRCUCOMMAND           SPD4N505 OVERRIDE        SPD9N505  TC Control Flags :  GBM IL DSE --- -- ---  Subsch. ID : 370 Det. descr. : SEND A SINGLE COMMAND TO THE DRCU	SCD06505  841d0080 <hex> 0 <hex> (Def)	TC	
	ET=+ UT=+00.00.01	SET_OBS_STEP  SET_OBS_STEP  Command Parameter(s) : OBSERVATION_STEP        SP03N500  TC Control Flags :  GBM IL DSE --- -- ---  Subsch. ID : 370 Det. descr. : SET OBSERVATION STEP	SC003500  0 <hex>	TC	
	ET=+ UT=+00.00.00	SET_BBID  SET_BBID  Command Parameter(s) : BUILDING_BLOCK_ID        SP01N500  TC Control Flags :  GBM IL DSE --- -- ---  Subsch. ID : 370 Det. descr. : SET BUILDING BLOCK IDENTIFIER	SC001500  80000000 <hex>	TC	
	ET=+ UT=+00.00.03	SET_OBS_STEP  SET_OBS_STEP  Command Parameter(s) : OBSERVATION_STEP        SP03N500  TC Control Flags :  GBM IL DSE --- -- ---  Subsch. ID : 370 Det. descr. : SET OBSERVATION STEP	SC003500  0 <hex>	TC	

Mode\_DcuFunc13\_Phot BDA Integrity Check  
 File: H\_COP\_SPI\_DPIC.xls  
 Author: L.Lucas-hp



Step No.	Time	Activity/Remarks	TC/TLM	Display/ Branch	AIT Comment
	ET=+ UT=+00.00.00	SET_BBID  SET_BBID  Command Parameter(s) : BUILDING_BLOCK_ID SP01N500  TC Control Flags : GBM IL DSE ---- Subsch. ID : 370 Det. descr. : SET BUILDING BLOCK IDENTIFIER	SC001500  881e0011 <hex>	TC	
	ET=+ UT=+00.00.02	SET_OBS_STEP  SET_OBS_STEP  Command Parameter(s) : OBSERVATION_STEP SP03N500  TC Control Flags : GBM IL DSE ---- Subsch. ID : 370 Det. descr. : SET OBSERVATION STEP	SC003500  1 <hex>	TC	
	ET=+ UT=+00.00.01	SEND_DRCU_COMMAND  SEND_DRCU_COMMAND  Command Parameter(s) : DRCUCOMMAND SPD4N505 OVERRIDE SPD9N505  TC Control Flags : GBM IL DSE ---- Subsch. ID : 370 Det. descr. : SEND A SINGLE COMMAND TO THE DRCU	SCD06505  843c0010 <hex> 0 <hex> (Def)	TC	
	ET=+ UT=+00.00.00	SEND_DRCU_COMMAND  SEND_DRCU_COMMAND  Command Parameter(s) : DRCUCOMMAND SPD4N505 OVERRIDE SPD9N505  TC Control Flags : GBM IL DSE ---- Subsch. ID : 370 Det. descr. : SEND A SINGLE COMMAND TO THE DRCU	SCD06505  843e0001 <hex> 0 <hex> (Def)	TC	
	ET=+ UT=+00.00.03	SEND_DRCU_COMMAND  SEND_DRCU_COMMAND  Command Parameter(s) : DRCUCOMMAND SPD4N505 OVERRIDE SPD9N505  TC Control Flags : GBM IL DSE ---- Subsch. ID : 370 Det. descr. : SEND A SINGLE COMMAND TO THE DRCU	SCD06505  843e0000 <hex> 0 <hex> (Def)	TC	
	ET=+ UT=+00.00.00	SEND_DRCU_COMMAND  SEND_DRCU_COMMAND  Command Parameter(s) : DRCUCOMMAND SPD4N505 OVERRIDE SPD9N505  TC Control Flags : GBM IL DSE ---- Subsch. ID : 370 Det. descr. : SEND A SINGLE COMMAND TO THE DRCU	SCD06505  843c0018 <hex> 0 <hex> (Def)	TC	

Mode\_DcuFunc13\_Phot BDA Integrity Check  
 File: H\_COP\_SPI\_DPIC.xls  
 Author: L.Lucas-hp



Step No.	Time	Activity/Remarks	TC/TLM	Display/ Branch	AIT Comment
	ET=+ UT=+00.00.01	SEND_DRCU_COMMAND  SEND_DRCU_COMMAND  Command Parameter(s) : DRCUCOMMAND           SPD4N505 OVERRIDE        SPD9N505  TC Control Flags :  GBM IL DSE --- -- ---  Subsch. ID : 370 Det. descr. : SEND A SINGLE COMMAND TO THE DRCU	SCD06505  843e0001 <hex> 0 <hex> (Def)	TC	
	ET=+ UT=+00.00.03	SEND_DRCU_COMMAND  SEND_DRCU_COMMAND  Command Parameter(s) : DRCUCOMMAND           SPD4N505 OVERRIDE        SPD9N505  TC Control Flags :  GBM IL DSE --- -- ---  Subsch. ID : 370 Det. descr. : SEND A SINGLE COMMAND TO THE DRCU	SCD06505  843e0000 <hex> 0 <hex> (Def)	TC	
	ET=+ UT=+00.00.01	FLUSH_FIFO  FLUSH_FIFO  Command Parameter(s) : FIFOFLAGS            SPD0N505  TC Control Flags :  GBM IL DSE --- -- ---  Subsch. ID : 370 Det. descr. : FORCE DPU TO READ SCIENCE DATA FROM FIFOS AND FLUSH CONTENTS	SCD01505  1000 <hex>	TC	
	ET=+ UT=+00.00.01	SEND_DRCU_COMMAND  SEND_DRCU_COMMAND  Command Parameter(s) : DRCUCOMMAND           SPD4N505 OVERRIDE        SPD9N505  TC Control Flags :  GBM IL DSE --- -- ---  Subsch. ID : 370 Det. descr. : SEND A SINGLE COMMAND TO THE DRCU	SCD06505  843c0000 <hex> 0 <hex> (Def)	TC	
5		Set default end conditions		Next Step: END	
		Note that a <b>TM(5,1)</b> packet [New_Step_Report] is generated after each of the following SET_OBS_STEP telecommands			
	ET=+ UT=+00.00.00	SET_OBS_STEP  SET_OBS_STEP  Command Parameter(s) : OBSERVATION_STEP        SP03N500  Subsch. ID : 370 Det. descr. : SET OBSERVATION STEP	SC003500  0 <hex>	TC	

Mode\_DcuFunc13\_Phot BDA Integrity Check  
 File: H\_COP\_SPI\_DPIC.xls  
 Author: L.Lucas-hp



Step No.	Time	Activity/Remarks	TC/TLM	Display/ Branch	AIT Comment
	ET=+ UT=+00.00.01	SET_BBID  Command Parameter(s) : BUILDING_BLOCK_ID SP01N500  Subsch. ID : 370 Det. descr. : SET BUILDING BLOCK IDENTIFIER	SET_BBID  SC001500  80000000 <hex>	TC	
		Verify Telemetry BBFULLTYPE SM2LN500	= Null	AND=ZAZ90999	
	ET=+ UT=+00.00.00	SET_OBS_STEP  Command Parameter(s) : OBSERVATION_STEP SP03N500  Subsch. ID : 370 Det. descr. : SET OBSERVATION STEP	SET_OBS_STEP  SC003500  0 <hex>	TC	
	ET=+ UT=+00.00.01	SET_BBID  Command Parameter(s) : BUILDING_BLOCK_ID SP01N500  Subsch. ID : 370 Det. descr. : SET BUILDING BLOCK IDENTIFIER	SET_BBID  SC001500  80030001 <hex>	TC	
		Verify Telemetry BBFULLTYPE SM2LN500	= EndObs	AND=ZAZ90999	
	ET=+ UT=+00.00.00	SET_OBS_STEP  Command Parameter(s) : OBSERVATION_STEP SP03N500  Subsch. ID : 370 Det. descr. : SET OBSERVATION STEP	SET_OBS_STEP  SC003500  1 <hex>	TC	
	ET=+ UT=+00.00.01	SET_OBSID  Command Parameter(s) : OBSERVATION_ID SP00N500  Subsch. ID : 370 Det. descr. : SET OBSERVATION IDENTIFIER	SET_OBSID  SC000500  00000000 <hex>	TC	
		Verify Telemetry OBSID SM10N500	= 00000000 <hex>	AND=ZAZ90999	
	ET=+ UT=+00.00.00	SET_OBS_STEP  Command Parameter(s) : OBSERVATION_STEP SP03N500  Subsch. ID : 370 Det. descr. : SET OBSERVATION STEP	SET_OBS_STEP  SC003500  0 <hex>	TC	
	ET=+ UT=+00.00.01	SET_BBID  Command Parameter(s) : BUILDING_BLOCK_ID SP01N500  Subsch. ID : 370 Det. descr. : SET BUILDING BLOCK IDENTIFIER	SET_BBID  SC001500  80000000 <hex>	TC	
		Verify Telemetry BBFULLTYPE SM2LN500	= Null	AND=ZAZ90999	
End of Sequence					

Mode_DcuFunc13_Phot BDA Integrity Check File: H_COP_SPI_DPIC.xls Author: L.Lucas-hp	 
---	--

Step No.	Time	Activity/Remarks	TC/TLM	Display/ Branch	AIT Comment
<b>End of Procedure</b>					