

Set Nominal HK Rate
 File: H_COP_SPI_CFT8.xls
 Author: L.Lucas-hp



Procedure Summary

Objectives

The objective of this procedure is to stipulate all the procedures required for putting SPIRE in REDY Mode.

Summary of Constraints

The saved stack files should have been generated prior to the DTCP and sent to the HSC/ICC as defined in the procedure H_GSP_MCS_MSTK.

One OBS_ID value is required from the HSC.

Spacecraft Configuration

Start of Procedure

n/a

End of Procedure

Mode = Redy

Reference File(s)

Input Command Sequences

Output Command Sequences

Referenced Displays

ANDs GRDs SLDS
 ZAZ7J999

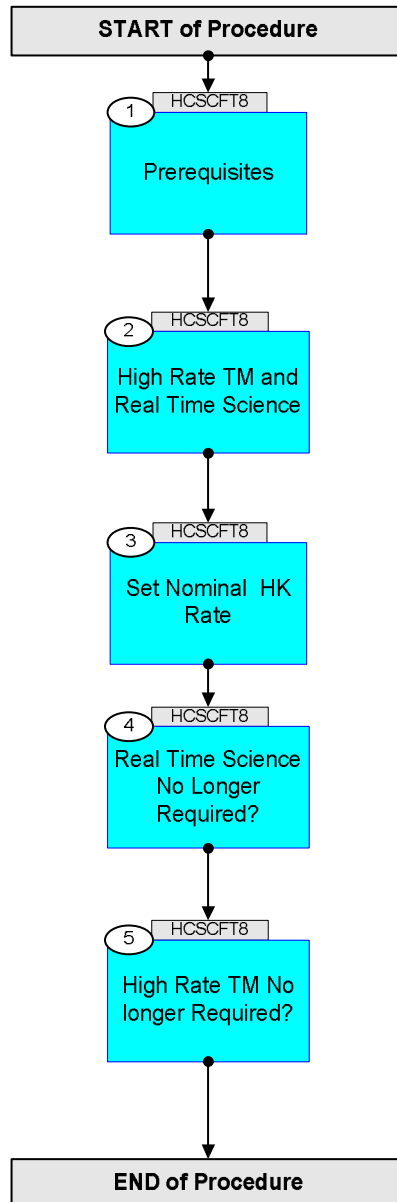
Configuration Control Information

DATE	FOP ISSUE	VERSION	MODIFICATION DESCRIPTION	AUTHOR	SPR REF
21/04/09	2.3	1	Created	L.Lucas-hp	

Set Nominal HK Rate
File: H_COP_SPI_CFT8.xls
Author: L.Lucas-hp



Procedure Flowchart Overview



Set Nominal HK Rate
 File: H_COP_SPI_CFT8.xls
 Author: L.Lucas-hp



Step No.	Time	Activity/Remarks	TC/TLM	Display/ Branch
Beginning of Procedure				
<p><i>TC Seq. Name : HCSCFT8 (Set Nom HK Rate)</i></p> <p><i>TimeTag Type:</i> <i>Sub Schedule ID:</i></p> <p style="text-align: center;">□</p>				
1		Prerequisites		Next Step: 2
		<p>The following test consists of one activity. Each activity is represented by one saved stack file which should be generated prior to the DTCP.</p> <p>Each stack should also be delivered to the HSC/ICC using the procedure defined in H_GSP_MCS_MSTK</p>		
		<p>NOTE: Naming Convention for saved stack file:</p> <p>yyyymmdd_nnnn_H_SAVED_xxvv</p> <p>yyyy = Year [of expected uplink] mm = Month [of expected uplink] dd = Day [of expected uplink] nnnn = OD [of expected uplink] xx = TSF number (defined in each activity) vv = version number</p>		
		<p>Note: The eight procedures defined below should be brought together into the TBC saved stack file prior to the DTCP:</p> <p>yyyymmdd_nnnn_H_SAVED_xxvv</p> <p>This file is then called up and executed on the manual stack during the DTCP.</p>		
1.1		Verify HSC/ICC Inputs		□
		<p>Prerequisites, verify: DPU s/w version/subversion SPU s/w version/subversion</p> <p>FP: OBS_ID (quantity 1)</p>		
2		High Rate TM and Real Time Science		Next Step: 3
		Note: Both high rate TM and Real Time Science are required for this test.		
2.1		Verify High Rate TM is Available.		□

Set Nominal HK Rate
 File: H_COP_SPI_CFT8.xls
 Author: L.Lucas-hp



Step No.	Time	Activity/Remarks	TC/TLM	Display/ Branch
		High Rate TM is required.		
		Verify High Bit Rate TME_BITRATE DEMRF160	= 1.5 Mbps	AND=ZAZ7J999
		If High Rate is not available, consult with SOM. Upon confirmation from SOM, run the following procedure to enable High Rate TM. PROCEDURE: H_FCP_TTC_TUHR [HFTTUHR]		
2.2		Verify Real Time Science is Available.		<input type="checkbox"/>
		Real Time Science data is required. Check the NCTRS for VC1.		
		If VC1 is not available, consult with SOM. Upon confirmation from SOM, run the following procedure to enable RTS. PROCEDURE: H_FCP_DHS_1013A [HFD1013A]		
3		Set Nominal HK Rate		Next Step: 4
		Note: The xxxx procedures defined below should be brought together into the TBC saved stack file prior to the DTCP: yyymmdd_nnnn_H_SAVED_xxvv This file is then called up and executed on the manual stack during the DTCP.		
3.1		Activity procedures		<input type="checkbox"/>
		Run the following one, 1 SPIRE procedure.		
3.1.1		Set Nom HK Rate		<input type="checkbox"/>
		PROCEDURE: H_COP_SPI_SETF [HCSSETF] FP: OBS_ID		
4		Real Time Science No Longer Required?		Next Step: 5
		Real Time Science data is no longer required for this test for SPIRE.		

Set Nominal HK Rate
 File: H_COP_SPI_CFT8.xls
 Author: L.Lucas-hp



Step No.	Time	Activity/Remarks	TC/TLM	Display/ Branch
4.1		Verify Real Time Science is Still Required		<input type="checkbox"/>
		Verify if RTS is still required (generally). Consult with SOM. If it is still required, do nothing.		
		If REal Time Science is not still required. Upon confirmation from SOM, if RTS is no longer required generally and should be disabled, run the following procedure to disable RTS. PROCEDURE: H_FCP_DHS_1013B [HFD1013B]		
5		High Rate TM No longer Required?		Next Step: END
5.1		Verify High Rate TM is Still Required.		<input type="checkbox"/>
		Verify if High Rate TM is still required (generally). Consult with SOM. If it is still required, do nothing.		
		If High Rate is not still required. Upon confirmation from SOM, run the following procedure to changefrom High Rate to medium rate TM. PROCEDURE: H_FCP_TTC_TUMR [HFTTUMR]		
End of Procedure				