

SPIRE-CP-DISCHARGE-COOLER
 File: H_COP_SPI_CDIS.xls
 Author: L.Lucas-hp



Procedure Summary

Objectives

This procedure discharges the SPIRE cooler
 Based on procedure:SPIRE-CP-DISCHARGE-COOLER
 Generated:28/06/2009

Summary of Constraints

Spacecraft Configuration

Start of Procedure

End of Procedure

Reference File(s)

Input Command Sequences

Output Command Sequences
 HCSCDIS

Referenced Displays

ANDs	GRDs	SLDs
ZAZ90999		
ZAZ93999		
SA_6_559		

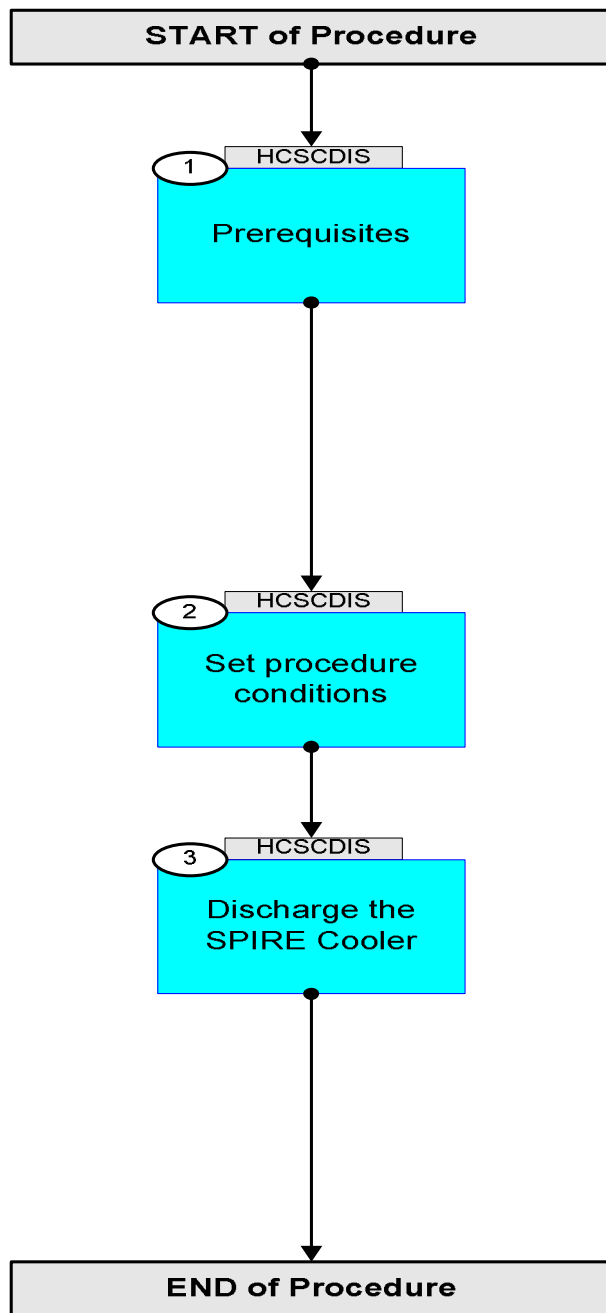
Configuration Control Information

DATE	FOP ISSUE	VERSION	MODIFICATION DESCRIPTION	AUTHOR	SPR REF
29/06/09	2.5	1	Created	L.Lucas-hp	

SPIRE-CP-DISCHARGE-COOLER
File: H_COP_SPI_CDIS.xls
Author: L.Lucas-hp



Procedure Flowchart Overview

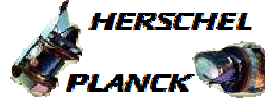


SPIRE-CP-DISCHARGE-COOLER
 File: H_COP_SPI_CDIS.xls
 Author: L.Lucas-hp



Step No.	Time	Activity/Remarks	TC/TLM	Display/ Branch
Beginning of Procedure				
TC Seq. Name : HCSCDIS (Cooler Discharge) TimeTag Type: Y Sub Schedule ID: <input type="checkbox"/>				
1		Prerequisites		Next Step: 2
1.1		Set Bus Profile		<input type="checkbox"/>
		Execute Telecommand <div style="text-align: right;">SelectActiveSCBP</div> Command Parameter(s) : <div style="text-align: right;">SCBP DH049160</div> TC Control Flags : <div style="text-align: right;">GBM IL DSE --Y -- --</div> Subsch. ID : 10 Det. descr. : Select Active SCBP from SCBP Table	DC819160 3 <dec>	
1.2		Verify TM		<input type="checkbox"/>
		THSK SM00T500	any	AND=ZAZ90999
		Verify Telemetry <div style="text-align: right;">BSW_SDB_ActProf DEF5F160</div>	= 3 <dec>	AND=ZAZ93999
2		Set procedure conditions		Next Step: 3
		RESET_DRCU_COUNTERS <div style="text-align: right;">RESET_DRCU_COUNTERS</div> Subsch. ID : 370 Det. descr. : RESET DRCU COUNTERS	SCD00505	
		Verify that the TRESET parameter has the same value as the THSK parameter <div style="text-align: right;">TRESET SM01T500</div>	same as THSK	AND=ZAZ90999
		THSK SM00T500	any	AND=ZAZ90999
3		Discharge the SPIRE Cooler		Next Step: END
		Switch off the Pump Heat Switch		

SPIRE-CP-DISCHARGE-COOLER
 File: H_COP_SPI_CDIS.xls
 Author: L.Lucas-hp



Step No.	Time	Activity/Remarks	TC/TLM	Display/ Branch
		SEND_DRCU_COMMAND <p style="text-align: center;">SEND_DRCU_COMMAND</p> Command Parameter(s) : DRCUCOMMAND SPD4N505 OVERRIDE SPD9N505 TC Control Flags : <p style="text-align: right;">GBM IL DSE --Y -- ---</p> Subsch. ID : 370 Det. descr. : SEND A SINGLE COMMAND TO THE DRCU	SCD06505 A0C40000 <hex> 0 <hex> (Def)	
		Verify Telemetry <p style="text-align: center;">SPHSV SMH0A520</p>	= 0.0 mV	AND=SA_6_559
		Apply 1.4 mA to the Evaporator Heat Switch		
	ET=+00.00.02 UT=+	SEND_DRCU_COMMAND <p style="text-align: center;">SEND_DRCU_COMMAND</p> Command Parameter(s) : DRCUCOMMAND SPD4N505 OVERRIDE SPD9N505 TC Control Flags : <p style="text-align: right;">GBM IL DSE --Y -- ---</p> Subsch. ID : 370 Det. descr. : SEND A SINGLE COMMAND TO THE DRCU	SCD06505 A0C50DEB <hex> 0 <hex> (Def)	
		Verify Telemetry <p style="text-align: center;">EVHSV SMT0A520</p>	= 560.0 mV	AND=SA_6_559
End of Procedure				