

SPIRE\_IST\_DNS\_PHOT Apply nominal Photometer detector settings  
 File: H\_COP\_SPI\_APDS.xls  
 Author: L.Lucas-hp



## Procedure Summary

### Objectives

This is an auxillary procedure. The purpose of this procedure is to apply nominal Photometer detector settings.

Based on procedure:  
 Name:SPIRE\_IST\_DNS\_PHOT  
 Version number:5  
 Generated:27/03/2009

### Summary of Constraints

n/a

### Spacecraft Configuration

#### Start of Procedure

Mode = REDY

#### End of Procedure

### Reference File(s)

#### Input Command Sequences

#### Output Command Sequences

HCSAPDS

### Referenced Displays

ANDs GRDs SLDs  
 ZAZ90999

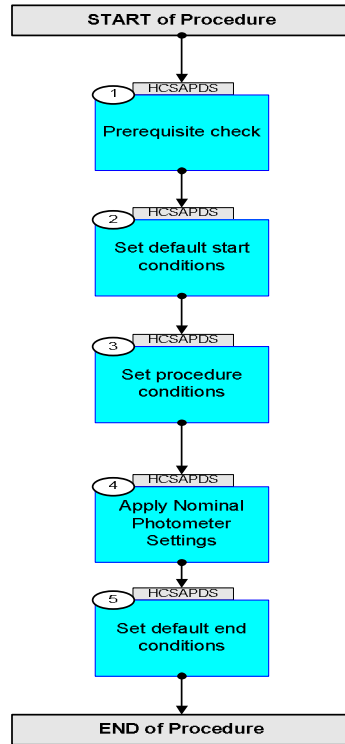
### Configuration Control Information

DATE	FOP ISSUE	VERSION	MODIFICATION DESCRIPTION	AUTHOR	SPR REF
19/04/09	2.3	1	Created	L.Lucas-hp	
04/05/09	2.4	2	Removed ET	L.Lucas-hp	

SPIRE\_IST\_DNS\_PHOT Apply nominal Photometer detector settings  
File: H\_COP\_SPI\_APDS.xls  
Author: L.Lucas-hp



## Procedure Flowchart Overview

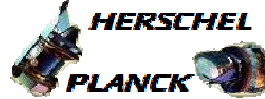


SPIRE\_IST\_DNS\_PHOT Apply nominal Photometer detector settings  
 File: H\_COP\_SPI\_APDS.xls  
 Author: L.Lucas-hp



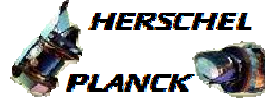
Step No.	Time	Activity/Remarks	TC/TLM	Display/ Branch
<b>Beginning of Procedure</b>				
TC Seq. Name : HCSAPDS (Phot Detect Settings)				
TimeTag Type: Y Sub Schedule ID:  <input type="checkbox"/>				
1		Prerequisite check		Next Step: 2
1.1		HSC/ICC input		<input type="checkbox"/>
		Verify that the HSC has supplied a valid OBSID value:  OBS_ID = 0xnnnn nnnn		
2		Set default start conditions		Next Step: 3
		Note that a <b>TM(5,1)</b> packet [New_Step_Report] is generated after each of the following SET_OBS_STEP telecommands		
	ET=+ UT=+00.00.00	SET_OBS_STEP  Command Parameter(s) : OBSERVATION_STEP SP03N500  Subsch. ID : 370 Det. descr. : SET OBSERVATION STEP	SET_OBS_STEP  SC003500  0 <hex>	
	ET=+ UT=+00.00.01	SET_BBID  Command Parameter(s) : BUILDING_BLOCK_ID SP01N500  Subsch. ID : 370 Det. descr. : SET BUILDING BLOCK IDENTIFIER	SET_BBID  SC001500  80010001 <hex>	
		Verify Telemetry  BBFULLTYPE SM2LN500	= ClearObs	AND=ZAZ90999
	ET=+ UT=+00.00.00	SET_OBS_STEP  Command Parameter(s) : OBSERVATION_STEP SP03N500  Subsch. ID : 370 Det. descr. : SET OBSERVATION STEP	SET_OBS_STEP  SC003500  1 <hex>	

SPIRE\_IST\_DNS\_PHOT Apply nominal Photometer detector settings  
 File: H\_COP\_SPI\_APDS.xls  
 Author: L.Lucas-hp



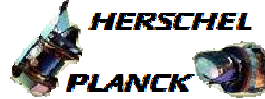
Step No.	Time	Activity/Remarks	TC/TLM	Display/ Branch
	ET=+ UT=+00.00.01	SET_OBSID  Command Parameter(s) : OBSERVATION_ID  Subsch. ID : 370 Det. descr. : SET OBSERVATION IDENTIFIER	SET_OBSID  SP00N500  00000000 <hex>	
		Verify Telemetry  OBSID SM10N500	= 00000000 <hex>	AND=ZAZ90999
	ET=+ UT=+00.00.00	SET_OBS_STEP  Command Parameter(s) : OBSERVATION_STEP  Subsch. ID : 370 Det. descr. : SET OBSERVATION STEP	SET_OBS_STEP  SP03N500  0 <hex>	
	ET=+ UT=+00.00.01	SET_BBID  Command Parameter(s) : BUILDING_BLOCK_ID  Subsch. ID : 370 Det. descr. : SET BUILDING BLOCK IDENTIFIER	SET_BBID  SP01N500  80000000 <hex>	
		Verify Telemetry  BBFULLTYPE SM2LN500	= Null	AND=ZAZ90999
	ET=+ UT=+00.00.00	SET_OBS_STEP  Command Parameter(s) : OBSERVATION_STEP  Subsch. ID : 370 Det. descr. : SET OBSERVATION STEP	SET_OBS_STEP  SP03N500  0 <hex>	
	ET=+ UT=+00.00.01	SET_BBID  Command Parameter(s) : BUILDING_BLOCK_ID  Subsch. ID : 370 Det. descr. : SET BUILDING BLOCK IDENTIFIER	SET_BBID  SP01N500  80020001 <hex>	
		Verify Telemetry  BBFULLTYPE SM2LN500	= StartObs	AND=ZAZ90999
3		Set procedure conditions		Next Step: 4

SPIRE\_IST\_DNS\_PHOT Apply nominal Photometer detector settings  
 File: H\_COP\_SPI\_APDS.xls  
 Author: L.Lucas-hp



Step No.	Time	Activity/Remarks	TC/TLM	Display/ Branch
	ET=+ UT=+00.00.00	RESET_DRCU_COUNTERS  Subsch. ID : 370 Det. descr. : RESET DRCU COUNTERS	SCD00505	
		Verify that the TRESET parameter has the same value as the THSK parameter  TRESET SM01T500	same as THSK	AND=ZAZ90999
		THSK SM00T500	any	AND=ZAZ90999
		Note that a <b>TM(5,1)</b> packet [New_Step_Report] is generated after each of the following SET_OBS_STEP telecommands		
	ET=+ UT=+00.00.00	SET_OBS_STEP  Command Parameter(s) : OBSERVATION_STEP SP03N500  Subsch. ID : 370 Det. descr. : SET OBSERVATION STEP	SC003500  1 <hex>	
	ET=+ UT=+00.00.01	SET_OBSID  Command Parameter(s) : OBSERVATION_ID SP00N500  Subsch. ID : 370 Det. descr. : SET OBSERVATION IDENTIFIER	SC000500  OBS_ID	
		Verify Telemetry  OBSID SM10N500	OBS_ID	AND=ZAZ90999
	ET=+ UT=+00.00.00	SET_OBS_STEP  Command Parameter(s) : OBSERVATION_STEP SP03N500  Subsch. ID : 370 Det. descr. : SET OBSERVATION STEP	SC003500  0 <hex>	
	ET=+ UT=+00.00.01	SET_BBID  Command Parameter(s) : BUILDING_BLOCK_ID SP01N500  Subsch. ID : 370 Det. descr. : SET BUILDING BLOCK IDENTIFIER	SC001500  80000000 <hex>	
		Verify Telemetry  BBFULLTYPE SM2LN500	= Null	AND=ZAZ90999

SPIRE\_IST\_DNS\_PHOT Apply nominal Photometer detector settings  
 File: H\_COP\_SPI\_APDS.xls  
 Author: L.Lucas-hp



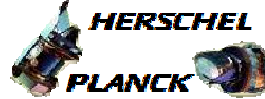
Step No.	Time	Activity/Remarks	TC/TLM	Display/ Branch
	ET=+ UT=+00.00.00	SET_OBS_STEP  SET_OBS_STEP  Command Parameter(s) : OBSERVATION_STEP SP03N500  TC Control Flags :  GBM IL DSE --Y -- ---  Subsch. ID : 370 Det. descr. : SET OBSERVATION STEP	SC003500  0 <hex>	
	ET=+ UT=+00.00.01	SET_BBID  SET_BBID  Command Parameter(s) : BUILDING_BLOCK_ID SP01N500  Subsch. ID : 370 Det. descr. : SET BUILDING BLOCK IDENTIFIER	SC001500  88260001 <hex>	
		Verify Telemetry  BBFULLTYPE SM2LN500	= Setup_PF_Data	AND=ZAZ90999
4		Apply Nominal Photometer Settings		Next Step: 5
		NOTE: No TM check will be required during the execution of the commands in this step.		
	ET=+ UT=+00.00.02	SET_OBS_STEP  SET_OBS_STEP  Command Parameter(s) : OBSERVATION_STEP SP03N500  TC Control Flags :  GBM IL DSE --Y -- ---  Subsch. ID : 370 Det. descr. : SET OBSERVATION STEP	SC003500  1 <hex>	
	ET=+ UT=+00.00.01	SEND_DRCU_COMMAND  SEND_DRCU_COMMAND  Command Parameter(s) : DRCUCOMMAND SPD4N505 OVERRIDE SPD9N505  TC Control Flags :  GBM IL DSE --- -- ---  Subsch. ID : 370 Det. descr. : SEND A SINGLE COMMAND TO THE DRCU	SCD06505  840000ff <hex> 0 <hex> (Def)	

SPIRE\_IST\_DNS\_PHOT Apply nominal Photometer detector settings  
 File: H\_COP\_SPI\_APDS.xls  
 Author: L.Lucas-hp



Step No.	Time	Activity/Remarks	TC/TLM	Display/ Branch
	ET=+ UT=+00.00.01	SEND_DRCU_COMMAND  SEND_DRCU_COMMAND  Command Parameter(s) : DRCUCOMMAND                   SPD4N505 OVERRIDE                   SPD9N505  TC Control Flags :  GBM IL DSE --- -- ---  Subsch. ID : 370 Det. descr. : SEND A SINGLE COMMAND TO THE DRCU	SCD06505  843c0000 <hex> 0 <hex> (Def)	
	ET=+ UT=+00.00.01	SEND_DRCU_COMMAND  SEND_DRCU_COMMAND  Command Parameter(s) : DRCUCOMMAND                   SPD4N505 OVERRIDE                   SPD9N505  TC Control Flags :  GBM IL DSE --- -- ---  Subsch. ID : 370 Det. descr. : SEND A SINGLE COMMAND TO THE DRCU	SCD06505  843d0000 <hex> 0 <hex> (Def)	
	ET=+ UT=+00.00.01	SEND_DRCU_COMMAND  SEND_DRCU_COMMAND  Command Parameter(s) : DRCUCOMMAND                   SPD4N505 OVERRIDE                   SPD9N505  TC Control Flags :  GBM IL DSE --- -- ---  Subsch. ID : 370 Det. descr. : SEND A SINGLE COMMAND TO THE DRCU	SCD06505  84190095 <hex> 0 <hex> (Def)	
	ET=+ UT=+00.00.01	SEND_DRCU_COMMAND  SEND_DRCU_COMMAND  Command Parameter(s) : DRCUCOMMAND                   SPD4N505 OVERRIDE                   SPD9N505  TC Control Flags :  GBM IL DSE --- -- ---  Subsch. ID : 370 Det. descr. : SEND A SINGLE COMMAND TO THE DRCU	SCD06505  84180006 <hex> 0 <hex> (Def)	

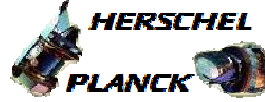
SPIRE\_IST\_DNS\_PHOT Apply nominal Photometer detector settings  
 File: H\_COP\_SPI\_APDS.xls  
 Author: L.Lucas-hp



Step No.	Time	Activity/Remarks	TC/TLM	Display/ Branch
	ET=+ UT=+00.00.01	SEND_DRCU_COMMAND  SEND_DRCU_COMMAND  Command Parameter(s) : DRCUCOMMAND                   SPD4N505 OVERRIDE                   SPD9N505  TC Control Flags :  GBM IL DSE --- -- ---  Subsch. ID : 370 Det. descr. : SEND A SINGLE COMMAND TO THE DRCU	SCD06505  8401003e <hex> 0 <hex> (Def)	
	ET=+ UT=+00.00.01	SEND_DRCU_COMMAND  SEND_DRCU_COMMAND  Command Parameter(s) : DRCUCOMMAND                   SPD4N505 OVERRIDE                   SPD9N505  TC Control Flags :  GBM IL DSE --- -- ---  Subsch. ID : 370 Det. descr. : SEND A SINGLE COMMAND TO THE DRCU	SCD06505  8402003e <hex> 0 <hex> (Def)	
	ET=+ UT=+00.00.01	SEND_DRCU_COMMAND  SEND_DRCU_COMMAND  Command Parameter(s) : DRCUCOMMAND                   SPD4N505 OVERRIDE                   SPD9N505  TC Control Flags :  GBM IL DSE --- -- ---  Subsch. ID : 370 Det. descr. : SEND A SINGLE COMMAND TO THE DRCU	SCD06505  8403003d <hex> 0 <hex> (Def)	
	ET=+ UT=+00.00.01	SEND_DRCU_COMMAND  SEND_DRCU_COMMAND  Command Parameter(s) : DRCUCOMMAND                   SPD4N505 OVERRIDE                   SPD9N505  TC Control Flags :  GBM IL DSE --- -- ---  Subsch. ID : 370 Det. descr. : SEND A SINGLE COMMAND TO THE DRCU	SCD06505  841a007f <hex> 0 <hex> (Def)	

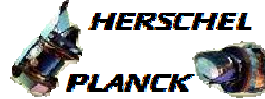


SPIRE\_IST\_DNS\_PHOT Apply nominal Photometer detector settings  
 File: H\_COP\_SPI\_APDS.xls  
 Author: L.Lucas-hp



Step No.	Time	Activity/Remarks	TC/TLM	Display/ Branch
	ET=+ UT=+00.00.01	SEND_DRCU_COMMAND  SEND_DRCU_COMMAND  Command Parameter(s) : DRCUCOMMAND                   SPD4N505 OVERRIDE                   SPD9N505  TC Control Flags :  GBM IL DSE --- -- ---  Subsch. ID : 370 Det. descr. : SEND A SINGLE COMMAND TO THE DRCU	SCD06505  841b007f <hex> 0 <hex> (Def)	
	ET=+ UT=+00.00.01	SEND_DRCU_COMMAND  SEND_DRCU_COMMAND  Command Parameter(s) : DRCUCOMMAND                   SPD4N505 OVERRIDE                   SPD9N505  TC Control Flags :  GBM IL DSE --- -- ---  Subsch. ID : 370 Det. descr. : SEND A SINGLE COMMAND TO THE DRCU	SCD06505  841c007f <hex> 0 <hex> (Def)	
	ET=+ UT=+00.00.01	SEND_DRCU_COMMAND  SEND_DRCU_COMMAND  Command Parameter(s) : DRCUCOMMAND                   SPD4N505 OVERRIDE                   SPD9N505  TC Control Flags :  GBM IL DSE --- -- ---  Subsch. ID : 370 Det. descr. : SEND A SINGLE COMMAND TO THE DRCU	SCD06505  8404003e <hex> 0 <hex> (Def)	
	ET=+ UT=+00.00.01	SEND_DRCU_COMMAND  SEND_DRCU_COMMAND  Command Parameter(s) : DRCUCOMMAND                   SPD4N505 OVERRIDE                   SPD9N505  TC Control Flags :  GBM IL DSE --- -- ---  Subsch. ID : 370 Det. descr. : SEND A SINGLE COMMAND TO THE DRCU	SCD06505  841d007f <hex> 0 <hex> (Def)	

SPIRE\_IST\_DNS\_PHOT Apply nominal Photometer detector settings  
 File: H\_COP\_SPI\_APDS.xls  
 Author: L.Lucas-hp



Step No.	Time	Activity/Remarks	TC/TLM	Display/ Branch
	ET=+ UT=+00.00.01	SET_OBS_STEP  SET_OBS_STEP  Command Parameter(s) : OBSERVATION_STEP SP03N500  TC Control Flags :  GBM IL DSE --- --  Subsch. ID : 370 Det. descr. : SET OBSERVATION STEP	SC003500  0 <hex>	
	ET=+ UT=+00.00.00	SET_BBID  SET_BBID  Command Parameter(s) : BUILDING_BLOCK_ID SP01N500  TC Control Flags :  GBM IL DSE --- --  Subsch. ID : 370 Det. descr. : SET BUILDING BLOCK IDENTIFIER	SC001500  80000000 <hex>	
	ET=+ UT=+00.00.02	SET_OBS_STEP  SET_OBS_STEP  Command Parameter(s) : OBSERVATION_STEP SP03N500  TC Control Flags :  GBM IL DSE --- --  Subsch. ID : 370 Det. descr. : SET OBSERVATION STEP	SC003500  0 <hex>	
	ET=+ UT=+00.00.00	SET_BBID  SET_BBID  Command Parameter(s) : BUILDING_BLOCK_ID SP01N500  TC Control Flags :  GBM IL DSE --- --  Subsch. ID : 370 Det. descr. : SET BUILDING BLOCK IDENTIFIER	SC001500  88300001 <hex>	
	ET=+ UT=+00.00.02	SET_OBS_STEP  SET_OBS_STEP  Command Parameter(s) : OBSERVATION_STEP SP03N500  TC Control Flags :  GBM IL DSE --- --  Subsch. ID : 370 Det. descr. : SET OBSERVATION STEP	SC003500  1 <hex>	

SPIRE\_IST\_DNS\_PHOT Apply nominal Photometer detector settings  
 File: H\_COP\_SPI\_APDS.xls  
 Author: L.Lucas-hp



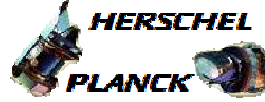
Step No.	Time	Activity/Remarks	TC/TLM	Display/ Branch
	ET=+ UT=+00.00.00	SEND_DRCU_COMMAND  SEND_DRCU_COMMAND  Command Parameter(s) : DRCUCOMMAND                   SPD4N505 OVERRIDE                   SPD9N505  TC Control Flags :  GBM IL DSE --- -- ---  Subsch. ID : 370 Det. descr. : SEND A SINGLE COMMAND TO THE DRCU	SCD06505  84040080 <hex> 0 <hex> (Def)	
	ET=+ UT=+00.00.01	SEND_DRCU_COMMAND  SEND_DRCU_COMMAND  Command Parameter(s) : DRCUCOMMAND                   SPD4N505 OVERRIDE                   SPD9N505  TC Control Flags :  GBM IL DSE --- -- ---  Subsch. ID : 370 Det. descr. : SEND A SINGLE COMMAND TO THE DRCU	SCD06505  841d0080 <hex> 0 <hex> (Def)	
	ET=+ UT=+00.00.01	SET_OBS_STEP  SET_OBS_STEP  Command Parameter(s) : OBSERVATION_STEP               SP03N500  TC Control Flags :  GBM IL DSE --- -- ---  Subsch. ID : 370 Det. descr. : SET OBSERVATION STEP	SC003500  0 <hex>	
	ET=+ UT=+00.00.00	SET_BBID  SET_BBID  Command Parameter(s) : BUILDING_BLOCK_ID               SP01N500  TC Control Flags :  GBM IL DSE --- -- ---  Subsch. ID : 370 Det. descr. : SET BUILDING BLOCK IDENTIFIER	SC001500  80000000 <hex>	
	ET=+ UT=+00.00.02	SET_OBS_STEP  SET_OBS_STEP  Command Parameter(s) : OBSERVATION_STEP               SP03N500  TC Control Flags :  GBM IL DSE --- -- ---  Subsch. ID : 370 Det. descr. : SET OBSERVATION STEP	SC003500  0 <hex>	

SPIRE\_IST\_DNS\_PHOT Apply nominal Photometer detector settings  
 File: H\_COP\_SPI\_APDS.xls  
 Author: L.Lucas-hp



Step No.	Time	Activity/Remarks	TC/TLM	Display/ Branch
	ET=+ UT=+00.00.00	SET_BBID  Command Parameter(s) : BUILDING_BLOCK_ID  TC Control Flags :  Subsch. ID : 370 Det. descr. : SET BUILDING BLOCK IDENTIFIER	SET_BBID  SP01N500  GBM IL DSE --- -- ---  SC001500  88360001 <hex>	
	ET=+ UT=+00.00.02	SET_OBS_STEP  Command Parameter(s) : OBSERVATION_STEP  TC Control Flags :  Subsch. ID : 370 Det. descr. : SET OBSERVATION STEP	SET_OBS_STEP  SP03N500  GBM IL DSE --- -- ---  SC003500  1 <hex>	
	ET=+ UT=+00.00.00	SEND_DRCU_COMMAND  Command Parameter(s) : DRCUCOMMAND OVERRIDE  TC Control Flags :  Subsch. ID : 370 Det. descr. : SEND A SINGLE COMMAND TO THE DRCU	SEND_DRCU_COMMAND  SPD4N505 SPD9N505  GBM IL DSE --- -- ---  SCD06505  843e0000 <hex> 0 <hex> (Def)	
	ET=+ UT=+00.00.01	FLUSH_FIFO  Command Parameter(s) : FIFOFLAGS  TC Control Flags :  Subsch. ID : 370 Det. descr. : FORCE DPU TO READ SCIENCE DATA FROM FIFOS AND FLUSH CONTENTS	FLUSH_FIFO  SPD0N505  GBM IL DSE --- -- ---  SCD01505  1000 <hex>	
	ET=+ UT=+00.00.03	RESET_FIFOS  Command Parameter(s) : RESETFLAGS  TC Control Flags :  Subsch. ID : 370 Det. descr. : RESET FIFOS	RESET_FIFOS  SPDDN505  GBM IL DSE --- -- ---  SCD07505  7000 <hex>	

SPIRE\_IST\_DNS\_PHOT Apply nominal Photometer detector settings  
 File: H\_COP\_SPI\_APDS.xls  
 Author: L.Lucas-hp



Step No.	Time	Activity/Remarks	TC/TLM	Display/ Branch
	ET=+ UT=+00.00.00	SET_OBS_STEP  SET_OBS_STEP  Command Parameter(s) : OBSERVATION_STEP SP03N500  TC Control Flags :  GBM IL DSE --- --  Subsch. ID : 370 Det. descr. : SET OBSERVATION STEP	SC003500  0 <hex>	
	ET=+ UT=+00.00.01	SET_BBID  SET_BBID  Command Parameter(s) : BUILDING_BLOCK_ID SP01N500  TC Control Flags :  GBM IL DSE --- --  Subsch. ID : 370 Det. descr. : SET BUILDING BLOCK IDENTIFIER	SC001500  80000000 <hex>	
	ET=+ UT=+00.00.02	SET_OBS_STEP  SET_OBS_STEP  Command Parameter(s) : OBSERVATION_STEP SP03N500  TC Control Flags :  GBM IL DSE --- --  Subsch. ID : 370 Det. descr. : SET OBSERVATION STEP	SC003500  0 <hex>	
	ET=+ UT=+00.00.00	SET_BBID  SET_BBID  Command Parameter(s) : BUILDING_BLOCK_ID SP01N500  TC Control Flags :  GBM IL DSE --- --  Subsch. ID : 370 Det. descr. : SET BUILDING BLOCK IDENTIFIER	SC001500  881e0001 <hex>	
	ET=+ UT=+00.00.02	SET_OBS_STEP  SET_OBS_STEP  Command Parameter(s) : OBSERVATION_STEP SP03N500  TC Control Flags :  GBM IL DSE --- --  Subsch. ID : 370 Det. descr. : SET OBSERVATION STEP	SC003500  1 <hex>	

SPIRE\_IST\_DNS\_PHOT Apply nominal Photometer detector settings  
 File: H\_COP\_SPI\_APDS.xls  
 Author: L.Lucas-hp



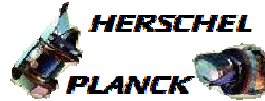
Step No.	Time	Activity/Remarks	TC/TLM	Display/ Branch
	ET=+ UT=+00.00.01	SEND_DRCU_COMMAND  SEND_DRCU_COMMAND  Command Parameter(s) : DRCUCOMMAND                   SPD4N505 OVERRIDE                   SPD9N505  TC Control Flags :  GBM IL DSE --- -- ---  Subsch. ID : 370 Det. descr. : SEND A SINGLE COMMAND TO THE DRCU	SCD06505  843c0010 <hex> 0 <hex> (Def)	
	ET=+ UT=+00.00.00	SEND_DRCU_COMMAND  SEND_DRCU_COMMAND  Command Parameter(s) : DRCUCOMMAND                   SPD4N505 OVERRIDE                   SPD9N505  TC Control Flags :  GBM IL DSE --- -- ---  Subsch. ID : 370 Det. descr. : SEND A SINGLE COMMAND TO THE DRCU	SCD06505  843e0001 <hex> 0 <hex> (Def)	
	ET=+ UT=+00.00.03	SEND_DRCU_COMMAND  SEND_DRCU_COMMAND  Command Parameter(s) : DRCUCOMMAND                   SPD4N505 OVERRIDE                   SPD9N505  TC Control Flags :  GBM IL DSE --- -- ---  Subsch. ID : 370 Det. descr. : SEND A SINGLE COMMAND TO THE DRCU	SCD06505  843e0000 <hex> 0 <hex> (Def)	
	ET=+ UT=+00.00.00	SEND_DRCU_COMMAND  SEND_DRCU_COMMAND  Command Parameter(s) : DRCUCOMMAND                   SPD4N505 OVERRIDE                   SPD9N505  TC Control Flags :  GBM IL DSE --- -- ---  Subsch. ID : 370 Det. descr. : SEND A SINGLE COMMAND TO THE DRCU	SCD06505  843c0018 <hex> 0 <hex> (Def)	

SPIRE\_IST\_DNS\_PHOT Apply nominal Photometer detector settings  
 File: H\_COP\_SPI\_APDS.xls  
 Author: L.Lucas-hp



Step No.	Time	Activity/Remarks	TC/TLM	Display/ Branch
	ET=+ UT=+00.00.01	SEND_DRCU_COMMAND  SEND_DRCU_COMMAND  Command Parameter(s) : DRCUCOMMAND                   SPD4N505 OVERRIDE                   SPD9N505  TC Control Flags :  GBM IL DSE --- -- ---  Subsch. ID : 370 Det. descr. : SEND A SINGLE COMMAND TO THE DRCU	SCD06505  843e0001 <hex> 0 <hex> (Def)	
	ET=+ UT=+00.00.03	SEND_DRCU_COMMAND  SEND_DRCU_COMMAND  Command Parameter(s) : DRCUCOMMAND                   SPD4N505 OVERRIDE                   SPD9N505  TC Control Flags :  GBM IL DSE --- -- ---  Subsch. ID : 370 Det. descr. : SEND A SINGLE COMMAND TO THE DRCU	SCD06505  843e0000 <hex> 0 <hex> (Def)	
	ET=+ UT=+00.00.01	FLUSH_FIFO  FLUSH_FIFO  Command Parameter(s) : FIFOFLAGS                   SPD0N505  TC Control Flags :  GBM IL DSE --- -- ---  Subsch. ID : 370 Det. descr. : FORCE DPU TO READ SCIENCE DATA FROM FIFOS AND FLUSH CONTENTS	SCD01505  1000 <hex>	
	ET=+ UT=+00.00.01	SEND_DRCU_COMMAND  SEND_DRCU_COMMAND  Command Parameter(s) : DRCUCOMMAND                   SPD4N505 OVERRIDE                   SPD9N505  TC Control Flags :  GBM IL DSE --- -- ---  Subsch. ID : 370 Det. descr. : SEND A SINGLE COMMAND TO THE DRCU	SCD06505  843c0000 <hex> 0 <hex> (Def)	

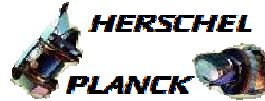
SPIRE\_IST\_DNS\_PHOT Apply nominal Photometer detector settings  
 File: H\_COP\_SPI\_APDS.xls  
 Author: L.Lucas-hp



Step No.	Time	Activity/Remarks	TC/TLM	Display/ Branch
	ET=+ UT=+00.00.00	SET_OBS_STEP  SET_OBS_STEP  Command Parameter(s) : OBSERVATION_STEP SP03N500  TC Control Flags :  GBM IL DSE --- -- ---  Subsch. ID : 370 Det. descr. : SET OBSERVATION STEP	SC003500  0 <hex>	
	ET=+ UT=+00.00.01	SET_BBID  SET_BBID  Command Parameter(s) : BUILDING_BLOCK_ID SP01N500  TC Control Flags :  GBM IL DSE --- -- ---  Subsch. ID : 370 Det. descr. : SET BUILDING BLOCK IDENTIFIER	SC001500  80000000 <hex>	
	ET=+ UT=+00.00.01	SET_OBS_STEP  SET_OBS_STEP  Command Parameter(s) : OBSERVATION_STEP SP03N500  TC Control Flags :  GBM IL DSE --- -- ---  Subsch. ID : 370 Det. descr. : SET OBSERVATION STEP	SC003500  0 <hex>	
	ET=+ UT=+00.00.01	SET_BBID  SET_BBID  Command Parameter(s) : BUILDING_BLOCK_ID SP01N500  TC Control Flags :  GBM IL DSE --- -- ---  Subsch. ID : 370 Det. descr. : SET BUILDING BLOCK IDENTIFIER	SC001500  88350001 <hex>	
	ET=+ UT=+00.00.01	SET_OBS_STEP  SET_OBS_STEP  Command Parameter(s) : OBSERVATION_STEP SP03N500  TC Control Flags :  GBM IL DSE --- -- ---  Subsch. ID : 370 Det. descr. : SET OBSERVATION STEP	SC003500  1 <hex>	



SPIRE\_IST\_DNS\_PHOT Apply nominal Photometer detector settings  
 File: H\_COP\_SPI\_APDS.xls  
 Author: L.Lucas-hp



Step No.	Time	Activity/Remarks	TC/TLM	Display/ Branch
	ET=+ UT=+00.00.01	SEND_DRCU_COMMAND  SEND_DRCU_COMMAND  Command Parameter(s) : DRCUCOMMAND                   SPD4N505 OVERRIDE                   SPD9N505  TC Control Flags :  GBM IL DSE --- -- ---  Subsch. ID : 370 Det. descr. : SEND A SINGLE COMMAND TO THE DRCU	SCD06505  843d0000 <hex> 0 <hex> (Def)	
	ET=+ UT=+00.00.00	SEND_DRCU_COMMAND  SEND_DRCU_COMMAND  Command Parameter(s) : DRCUCOMMAND                   SPD4N505 OVERRIDE                   SPD9N505  TC Control Flags :  GBM IL DSE --- -- ---  Subsch. ID : 370 Det. descr. : SEND A SINGLE COMMAND TO THE DRCU	SCD06505  843c0000 <hex> 0 <hex> (Def)	
	ET=+ UT=+00.00.01	SEND_DRCU_COMMAND  SEND_DRCU_COMMAND  Command Parameter(s) : DRCUCOMMAND                   SPD4N505 OVERRIDE                   SPD9N505  TC Control Flags :  GBM IL DSE --- -- ---  Subsch. ID : 370 Det. descr. : SEND A SINGLE COMMAND TO THE DRCU	SCD06505  843e0001 <hex> 0 <hex> (Def)	
5		Set default end conditions		Next Step: END
		Note that a <b>TM(5,1)</b> packet [New_Step_Report] is generated after each of the following SET_OBS_STEP telecommands		
	ET=+ UT=+00.00.00	SET_OBS_STEP  SET_OBS_STEP  Command Parameter(s) : OBSERVATION_STEP               SP03N500  Subsch. ID : 370 Det. descr. : SET OBSERVATION STEP	SC003500  0 <hex>	

SPIRE\_IST\_DNS\_PHOT Apply nominal Photometer detector settings  
 File: H\_COP\_SPI\_APDS.xls  
 Author: L.Lucas-hp



Step No.	Time	Activity/Remarks	TC/TLM	Display/ Branch	
	ET=+ UT=+00.00.01	SET_BBID  Command Parameter(s) : BUILDING_BLOCK_ID  Subsch. ID : 370 Det. descr. : SET BUILDING BLOCK IDENTIFIER	SET_BBID  SP01N500  80000000 <hex>	SC001500	
		Verify Telemetry  BBFULLTYPE	SM2LN500  = Null	AND=ZAZ90999	
	ET=+ UT=+00.00.00	SET_OBS_STEP  Command Parameter(s) : OBSERVATION_STEP  Subsch. ID : 370 Det. descr. : SET OBSERVATION STEP	SET_OBS_STEP  SP03N500  0 <hex>	SC003500	
	ET=+ UT=+00.00.01	SET_BBID  Command Parameter(s) : BUILDING_BLOCK_ID  Subsch. ID : 370 Det. descr. : SET BUILDING BLOCK IDENTIFIER	SET_BBID  SP01N500  80030001 <hex>	SC001500	
		Verify Telemetry  BBFULLTYPE	SM2LN500  = EndObs	AND=ZAZ90999	
	ET=+ UT=+00.00.00	SET_OBS_STEP  Command Parameter(s) : OBSERVATION_STEP  Subsch. ID : 370 Det. descr. : SET OBSERVATION STEP	SET_OBS_STEP  SP03N500  1 <hex>	SC003500	
	ET=+ UT=+00.00.01	SET_OBSID  Command Parameter(s) : OBSERVATION_ID  Subsch. ID : 370 Det. descr. : SET OBSERVATION IDENTIFIER	SET_OBSID  SP00N500  00000000 <hex>	SC000500	
		Verify Telemetry  OBSID	SM10N500  = 00000000 <hex>	AND=ZAZ90999	

SPIRE\_IST\_DNS\_PHOT Apply nominal Photometer detector settings  
 File: H\_COP\_SPI\_APDS.xls  
 Author: L.Lucas-hp



Step No.	Time	Activity/Remarks	TC/TLM	Display/ Branch
	ET=+ UT=+00.00.00	SET_OBS_STEP  Command Parameter(s) : OBSERVATION_STEP            SP03N500  Subsch. ID : 370 Det. descr. : SET OBSERVATION STEP	SC003500  0 <hex>	
	ET=+ UT=+00.00.01	SET_BBID  Command Parameter(s) : BUILDING_BLOCK_ID            SP01N500  Subsch. ID : 370 Det. descr. : SET BUILDING BLOCK IDENTIFIER	SC001500  80000000 <hex>	
		Verify Telemetry  BBFULLTYPE                    SM2LN500	= Null	AND=ZAZ90999
<b>End of Procedure</b>				