

PACS_Spec_Gra_IST_Full_Charac_OBS
 File: H_COP_PAC_X012.xls
 Author: R. Biggins



Procedure Summary

Objectives

The objective of this procedure is to fully characterize one set of PID parameters (Healthcheck & slewtime cal)

Based on procedure:
 PACS_Spec_Gra_IST_Full_Charac_OBS (v1 dated 16.03.2009)

Summary of Constraints

RT Science must be enabled to receive the Diagnostic HK packets

Spacecraft Configuration

Start of Procedure

PACS in NO_PRIME (SAFE) mode

End of Procedure

PACS in NO_PRIME (SAFE) mode
 - PACS is generating Spectroscopy HK

Reference File(s)

Input Command Sequences

Output Command Sequences

HCPX012X
 HCPX012Y

Referenced Displays

ANDs	GRDs	SLDs
ZAZ97999		
ZAZ98999		

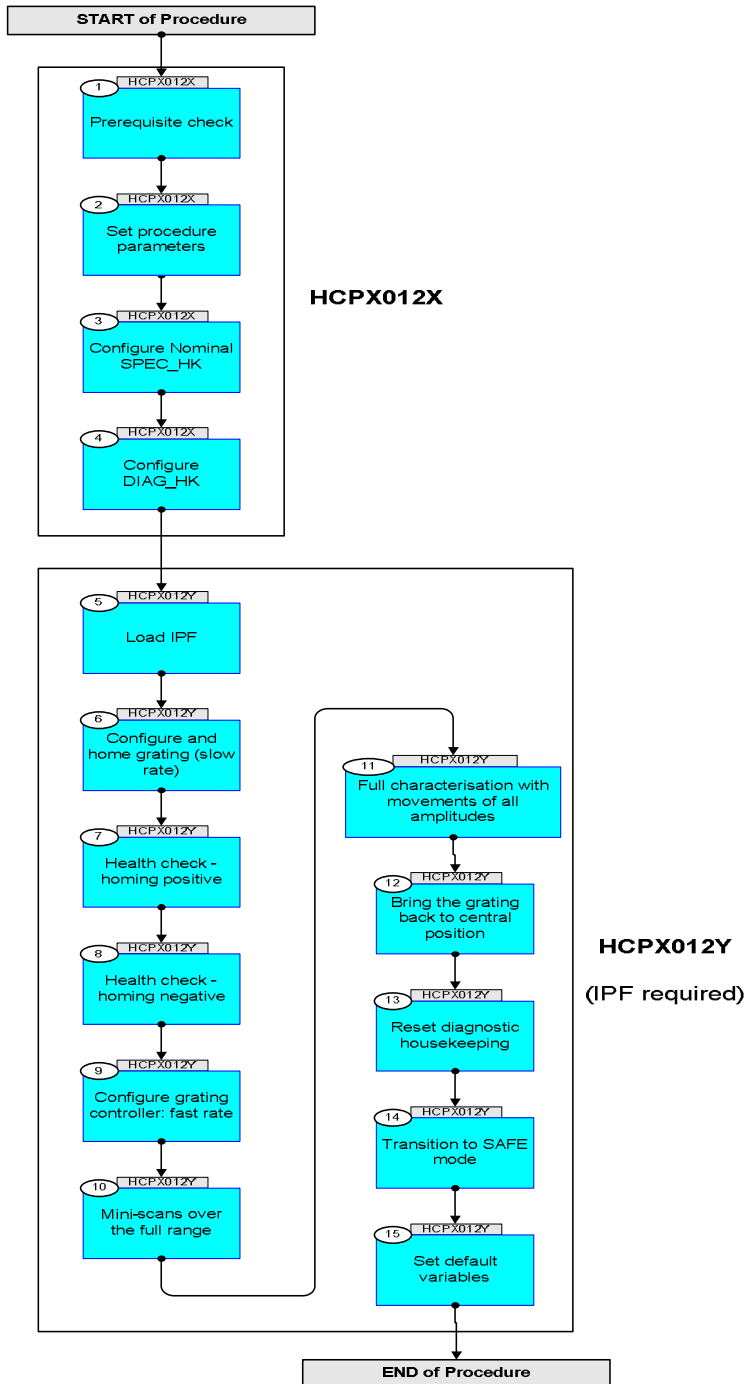
Configuration Control Information

DATE	FOP ISSUE	VERSION	MODIFICATION DESCRIPTION	AUTHOR	SPR REF
17/04/09	2.3	1	Created	R. Biggins	
28/04/09	2.4	2	Update due to problems in IPF - ET times removed	R. Biggins	

PACS_Spec_Gra_IST_Full_Charac_OBS
 File: H_COP_PAC_X012.xls
 Author: R. Biggins



Procedure Flowchart Overview



PACS_Spec_Gra_IST_Full_Charac_OBS
 File: H_COP_PAC_X012.xls
 Author: R. Biggins



Step No.	Time	Activity/Remarks	TC/TLM	Display/ Branch
	ET=+ UT=+00.00.01	DPU_SET_HK_LIST DPU_SET_HK_LIST Command Parameter(s) : HK_PACKET_ID PP005380 SPU_ARRAY PP025380 Subsch. ID : 90 Det. descr. : SET THE PREDIFINED LIST OF HK VALUES FOR THE HK PACKET	PC003380 SPEC BOTH Array	
		Verify Telemetry DP_TM_RATE PM049380	= SPEC	AND=ZAZ98999
4		Configure DIAG_HK		Next Step: 5
	ET=+ UT=+00.00.01	DMC_SET_BBID DMC_SET_BBID Command Parameter(s) : BUILDING_BLOCK_ID PP070420 TC Control Flags : GBM IL DSE --Y -- --- Subsch. ID : 90 Det. descr. : SET BBID IN DMC	PC079420 409B0001 <hex>	
	ET=+ UT=+00.00.01	DMC_WRT_DIAG_HK_LIST DMC_WRT_DIAG_HK_LIST Command Parameter(s) : DMC_DATA_LENGTH PP065420 DMC_4_BYTES_WORDS_DATA PP067420 DMC_4_BYTES_WORDS_DATA PP067420 DMC_4_BYTES_WORDS_DATA PP067420 DMC_4_BYTES_WORDS_DATA PP067420 DMC_4_BYTES_WORDS_DATA PP067420 DMC_4_BYTES_WORDS_DATA PP067420 DMC_4_BYTES_WORDS_DATA PP067420 DMC_4_BYTES_WORDS_DATA PP067420 DMC_4_BYTES_WORDS_DATA PP067420 DMC_4_BYTES_WORDS_DATA PP067420 DMC_4_BYTES_WORDS_DATA PP067420 DMC_4_BYTES_WORDS_DATA PP067420 DMC_4_BYTES_WORDS_DATA PP067420 DMC_4_BYTES_WORDS_DATA PP067420 DMC_4_BYTES_WORDS_DATA PP067420 DMC_CHECKSUM PP066420 Subsch. ID : 90 Det. descr. : WRITE THE LIST OF DIAGNOSTIC HK INTO DMC MEMORY	PC160420 16 <dec> 21B <hex> 21C <hex> 100 <hex> 101 <hex> 22C <hex> 234 <hex> 230 <hex> 237 <hex> D0 <hex> FA <hex> FB <hex> FC <hex> FD <hex> 1C4 <hex> 203 <hex> FFFF <hex> DE57 <hex>	

PACS_Spec_Gra_IST_Full_Charac_OBS
 File: H_COP_PAC_X012.xls
 Author: R. Biggins



Step No.	Time	Activity/Remarks	TC/TLM	Display/ Branch
	ET=+ UT=+00.00.01	DMC_START_DIAG_HK Command Parameter(s) : DIAG_HK_PERIOD PP076420 Subsch. ID : 90 Det. descr. : START THE ACQUISITION OF THE DIAGNOSTIC HK	PC146420 5 <dec>	
		NOTE: The verification of the generation of the TM(21,3) diagnostic packets cannot be done on the MCS, but can be seen on the NCTRS (VC7)		
TC Seq. Name :HCPX012Y (Full Characteristn) TimeTag Type: N Sub Schedule ID: <input type="checkbox"/>				
5		Load IPF		Next Step: 6
		Load the following IPF (TPF) file into the Manual Stack (where vvvv is the latest version number): HCPX012Y_GRATFULL_vvvv.IPF		
6		Configure and home grating (slow rate)		Next Step: 7
	ET=+ UT=+00.00.01	DMC_WRT_GRAT_CONF_PAR Command Parameter(s) : DMC_4_BYTES_WORDS_DATA PP067420 1 DMC_4_BYTES_WORDS_DATA PP067420 2 DMC_4_BYTES_WORDS_DATA PP067420 3 DMC_4_BYTES_WORDS_DATA PP067420 4 DMC_4_BYTES_WORDS_DATA PP067420 5 DMC_4_BYTES_WORDS_DATA PP067420 6 DMC_4_BYTES_WORDS_DATA PP067420 7 DMC_4_BYTES_WORDS_DATA PP067420 8 DMC_4_BYTES_WORDS_DATA PP067420 9 DMC_CHECKSUM PP066420 10 TC Control Flags : GBM IL DSE --Y -- -- Subsch. ID : 90 Det. descr. : WRITE THE PARAMETERS TO CONFIGURE THE GRATING SERVO LOOP	PC162420	

PACS_Spec_Gra_IST_Full_Charac_OBS
 File: H_COP_PAC_X012.xls
 Author: R. Biggins



Step No.	Time	Activity/Remarks	TC/TLM	Display/ Branch
	ET=+ UT=+00.00.01	DMC_HOME_GRAT DMC_HOME_GRAT Command Parameter(s) : HOMING_MODE PP077420 Subsch. ID : 90 Det. descr. : MOVE GRATING TO THE HOME POSITION	PC114420 NEGATIVE	
	ET=+ UT=+00.01.10	DMC_WRT_GRAT_CONF_PAR DMC_WRT_GRAT_CONF_PAR Command Parameter(s) : DMC_4_BYTES_WORDS_DATA PP067420 23 DMC_4_BYTES_WORDS_DATA PP067420 24 DMC_4_BYTES_WORDS_DATA PP067420 25 DMC_4_BYTES_WORDS_DATA PP067420 26 DMC_4_BYTES_WORDS_DATA PP067420 27 DMC_4_BYTES_WORDS_DATA PP067420 28 DMC_4_BYTES_WORDS_DATA PP067420 29 DMC_4_BYTES_WORDS_DATA PP067420 30 DMC_4_BYTES_WORDS_DATA PP067420 31 DMC_CHECKSUM PP066420 32 Subsch. ID : 90 Det. descr. : WRITE THE PARAMETERS TO CONFIGURE THE GRATING SERVO LOOP	PC162420	
	ET=+ UT=+00.00.00	DMC_WRT_GRAT_CONF_FILT DMC_WRT_GRAT_CONF_FILT Command Parameter(s) : DMC_4_BYTES_WORDS_DATA PP067420 33 DMC_4_BYTES_WORDS_DATA PP067420 34 DMC_4_BYTES_WORDS_DATA PP067420 35 DMC_4_BYTES_WORDS_DATA PP067420 36 DMC_4_BYTES_WORDS_DATA PP067420 37 DMC_CHECKSUM PP066420 38 Subsch. ID : 90 Det. descr. : WRITE THE PARAMETERS OF THE GRATING CONTROLLER FILTER	PC378420	
7		Health check - homing positive		Next Step: 8
	ET=+ UT=+00.00.02	DMC_SET_BBID DMC_SET_BBID Command Parameter(s) : BUILDING_BLOCK_ID PP070420 Subsch. ID : 90 Det. descr. : SET BBID IN DMC	PC079420 1085210625 <dec>	

PACS_Spec_Gra_IST_Full_Charac_OBS
 File: H_COP_PAC_X012.xls
 Author: R. Biggins



Step No.	Time	Activity/Remarks	TC/TLM	Display/ Branch
	ET=+ UT=+00.00.01	DMC_HOME_GRAT DMC_HOME_GRAT Command Parameter(s) : HOMING_MODE PP077420 Subsch. ID : 90 Det. descr. : MOVE GRATING TO THE HOME POSITION	PC114420 POSITIVE	
	ET=+ UT=+00.01.10	DMC_MOVE_GRAT_ABS_RAW DMC_MOVE_GRAT_ABS Command Parameter(s) : SET_POINT PP079420 Subsch. ID : 90 Det. descr. : MOVE GRATING TO AN ABSOLUTE POSITION	PC112420 500000 <dec>	
	ET=+ UT=+00.00.05	DMC_MOVE_GRAT_ABS_RAW DMC_MOVE_GRAT_ABS Command Parameter(s) : SET_POINT PP079420 Subsch. ID : 90 Det. descr. : MOVE GRATING TO AN ABSOLUTE POSITION	PC112420 115000 <dec>	
	ET=+ UT=+00.00.25	DMC_MOVE_GRAT_ABS_RAW DMC_MOVE_GRAT_ABS Command Parameter(s) : SET_POINT PP079420 Subsch. ID : 90 Det. descr. : MOVE GRATING TO AN ABSOLUTE POSITION	PC112420 990000 <dec>	
	ET=+ UT=+00.00.49	DMC_MOVE_GRAT_ABS_RAW DMC_MOVE_GRAT_ABS Command Parameter(s) : SET_POINT PP079420 Subsch. ID : 90 Det. descr. : MOVE GRATING TO AN ABSOLUTE POSITION	PC112420 115000 <dec>	
	ET=+ UT=+00.00.49	DMC_MOVE_GRAT_ABS_RAW DMC_MOVE_GRAT_ABS Command Parameter(s) : SET_POINT PP079420 Subsch. ID : 90 Det. descr. : MOVE GRATING TO AN ABSOLUTE POSITION	PC112420 500000 <dec>	
8		Health check - homing negative		Next Step: 9

PACS_Spec_Gra_IST_Full_Charac_OBS
 File: H_COP_PAC_X012.xls
 Author: R. Biggins



Step No.	Time	Activity/Remarks	TC/TLM	Display/ Branch
	ET=+ UT=+00.00.25	DMC_SET_BBID Command Parameter(s) : BUILDING_BLOCK_ID PP070420 Subsch. ID : 90 Det. descr. : SET BBID IN DMC	PC079420 1085210626 <dec>	
	ET=+ UT=+00.00.01	DMC_HOME_GRAT Command Parameter(s) : HOMING_MODE PP077420 Subsch. ID : 90 Det. descr. : MOVE GRATING TO THE HOME POSITION	PC114420 NEGATIVE	
	ET=+ UT=+00.01.10	DMC_MOVE_GRAT_ABS_RAW Command Parameter(s) : SET_POINT PP079420 Subsch. ID : 90 Det. descr. : MOVE GRATING TO AN ABSOLUTE POSITION	PC112420 500000 <dec>	
	ET=+ UT=+00.00.05	DMC_MOVE_GRAT_ABS_RAW Command Parameter(s) : SET_POINT PP079420 Subsch. ID : 90 Det. descr. : MOVE GRATING TO AN ABSOLUTE POSITION	PC112420 115000 <dec>	
	ET=+ UT=+00.00.25	DMC_MOVE_GRAT_ABS_RAW Command Parameter(s) : SET_POINT PP079420 Subsch. ID : 90 Det. descr. : MOVE GRATING TO AN ABSOLUTE POSITION	PC112420 990000 <dec>	
	ET=+ UT=+00.00.49	DMC_MOVE_GRAT_ABS_RAW Command Parameter(s) : SET_POINT PP079420 Subsch. ID : 90 Det. descr. : MOVE GRATING TO AN ABSOLUTE POSITION	PC112420 115000 <dec>	

PACS_Spec_Gra_IST_Full_Charac_OBS
 File: H_COP_PAC_X012.xls
 Author: R. Biggins



Step No.	Time	Activity/Remarks	TC/TLM	Display/ Branch
	ET=+ UT=+00.00.49	DMC_MOVE_GRAT_ABS_RAW DMC_MOVE_GRAT_ABS Command Parameter(s) : SET_POINT PP079420 Subsch. ID : 90 Det. descr. : MOVE GRATING TO AN ABSOLUTE POSITION	PC112420 500000 <dec>	
9		Configure grating controller: fast rate		Next Step: 10
	ET=+ UT=+00.00.25	DMC_DISABLE_GRAT_CONT DMC_DISABLE_GRAT_CONT Subsch. ID : 90 Det. descr. : DISABLE GRATING CONTROLLER	PC111420	
	ET=+ UT=+00.00.03	DMC_WRT_GRAT_CONF_PAR DMC_WRT_GRAT_CONF_PAR Command Parameter(s) : DMC_4_BYTES_WORDS_DATA PP067420 39 DMC_4_BYTES_WORDS_DATA PP067420 40 DMC_4_BYTES_WORDS_DATA PP067420 41 DMC_4_BYTES_WORDS_DATA PP067420 42 DMC_4_BYTES_WORDS_DATA PP067420 43 DMC_4_BYTES_WORDS_DATA PP067420 44 DMC_4_BYTES_WORDS_DATA PP067420 45 DMC_4_BYTES_WORDS_DATA PP067420 46 DMC_4_BYTES_WORDS_DATA PP067420 47 DMC_CHECKSUM PP066420 48 Subsch. ID : 90 Det. descr. : WRITE THE PARAMETERS TO CONFIGURE THE GRATING SERVO LOOP	PC162420	
	ET=+ UT=+00.00.00	DMC_WRT_GRAT_CONF_FILT DMC_WRT_GRAT_CONF_FILT Command Parameter(s) : DMC_4_BYTES_WORDS_DATA PP067420 49 DMC_4_BYTES_WORDS_DATA PP067420 50 DMC_4_BYTES_WORDS_DATA PP067420 51 DMC_4_BYTES_WORDS_DATA PP067420 52 DMC_4_BYTES_WORDS_DATA PP067420 53 DMC_CHECKSUM PP066420 54 Subsch. ID : 90 Det. descr. : WRITE THE PARAMETERS OF THE GRATING CONTROLLER FILTER	PC378420	
	ET=+ UT=+00.00.02	DMC_ENABLE_GRAT_CONT DMC_ENABLE_GRAT_CONT Subsch. ID : 90 Det. descr. : ENABLE GRATING CONTROLLER	PC110420	

PACS_Spec_Gra_IST_Full_Charac_OBS
 File: H_COP_PAC_X012.xls
 Author: R. Biggins



Step No.	Time	Activity/Remarks	TC/TLM	Display/ Branch
	ET=+ UT=+00.00.04	DMC_SET_BBID Command Parameter(s) : BUILDING_BLOCK_ID PP070420 Subsch. ID : 90 Det. descr. : SET BBID IN DMC	PC079420 1080492033 <dec>	
	ET=+ UT=+00.00.01	DMC_MOVE_GRAT_ABS_RAW Command Parameter(s) : SET_POINT PP079420 Subsch. ID : 90 Det. descr. : MOVE GRATING TO AN ABSOLUTE POSITION	PC112420 500000 <dec>	
10		<i>Mini-scans over the full range</i>		Next Step: 11
	ET=+ UT=+00.00.05	DMC_SET_BBID Command Parameter(s) : BUILDING_BLOCK_ID PP070420 Subsch. ID : 90 Det. descr. : SET BBID IN DMC	PC079420 1083965441 <dec>	
	ET=+ UT=+00.00.01	DMC_MOVE_GRAT_ABS Command Parameter(s) : SET_POINT PP079420 Subsch. ID : 90 Det. descr. : MOVE GRATING TO AN ABSOLUTE POSITION	PC112420 80000 <dec>	
	ET=+ UT=+00.00.45	DMC_MOVE_GRAT_REL Command Parameter(s) : SET_POINT_INCREMENT PP078420 Subsch. ID : 90 Det. descr. : MOVE GRATING OF A RELATIVE POSITION	PC113420 117 <dec>	
	ET=+ UT=+00.00.01	DMC_MOVE_GRAT_REL Command Parameter(s) : SET_POINT_INCREMENT PP078420 Subsch. ID : 90 Det. descr. : MOVE GRATING OF A RELATIVE POSITION	PC113420 117 <dec>	

PACS_Spec_Gra_IST_Full_Charac_OBS
 File: H_COP_PAC_X012.xls
 Author: R. Biggins



Step No.	Time	Activity/Remarks	TC/TLM	Display/ Branch
	ET=+ UT=+00.00.01	DMC_MOVE_GRAT_REL DMC_MOVE_GRAT_REL Command Parameter(s) : SET_POINT_INCREMENT PP078420 Subsch. ID : 90 Det. descr. : MOVE GRATING OF A RELATIVE POSITION	PC113420 117 <dec>	
	ET=+ UT=+00.00.01	DMC_MOVE_GRAT_REL DMC_MOVE_GRAT_REL Command Parameter(s) : SET_POINT_INCREMENT PP078420 Subsch. ID : 90 Det. descr. : MOVE GRATING OF A RELATIVE POSITION	PC113420 117 <dec>	
	ET=+ UT=+00.00.01	DMC_MOVE_GRAT_REL DMC_MOVE_GRAT_REL Command Parameter(s) : SET_POINT_INCREMENT PP078420 Subsch. ID : 90 Det. descr. : MOVE GRATING OF A RELATIVE POSITION	PC113420 117 <dec>	
	ET=+ UT=+00.00.01	DMC_MOVE_GRAT_REL DMC_MOVE_GRAT_REL Command Parameter(s) : SET_POINT_INCREMENT PP078420 Subsch. ID : 90 Det. descr. : MOVE GRATING OF A RELATIVE POSITION	PC113420 -117 <dec>	
	ET=+ UT=+00.00.01	DMC_MOVE_GRAT_REL DMC_MOVE_GRAT_REL Command Parameter(s) : SET_POINT_INCREMENT PP078420 Subsch. ID : 90 Det. descr. : MOVE GRATING OF A RELATIVE POSITION	PC113420 -117 <dec>	
	ET=+ UT=+00.00.01	DMC_MOVE_GRAT_REL DMC_MOVE_GRAT_REL Command Parameter(s) : SET_POINT_INCREMENT PP078420 Subsch. ID : 90 Det. descr. : MOVE GRATING OF A RELATIVE POSITION	PC113420 -117 <dec>	

PACS_Spec_Gra_IST_Full_Charac_OBS
 File: H_COP_PAC_X012.xls
 Author: R. Biggins



Step No.	Time	Activity/Remarks	TC/TLM	Display/ Branch
	ET=+ UT=+00.00.01	DMC_MOVE_GRAT_REL DMC_MOVE_GRAT_REL Command Parameter(s) : SET_POINT_INCREMENT PP078420 Subsch. ID : 90 Det. descr. : MOVE GRATING OF A RELATIVE POSITION	PC113420 -117 <dec>	
	ET=+ UT=+00.00.01	DMC_MOVE_GRAT_REL DMC_MOVE_GRAT_REL Command Parameter(s) : SET_POINT_INCREMENT PP078420 Subsch. ID : 90 Det. descr. : MOVE GRATING OF A RELATIVE POSITION	PC113420 -117 <dec>	
	ET=+ UT=+00.00.01	DMC_MOVE_GRAT_REL DMC_MOVE_GRAT_REL Command Parameter(s) : SET_POINT_INCREMENT PP078420 Subsch. ID : 90 Det. descr. : MOVE GRATING OF A RELATIVE POSITION	PC113420 233010 <dec>	
	ET=+ UT=+00.00.15	DMC_MOVE_GRAT_REL DMC_MOVE_GRAT_REL Command Parameter(s) : SET_POINT_INCREMENT PP078420 Subsch. ID : 90 Det. descr. : MOVE GRATING OF A RELATIVE POSITION	PC113420 117 <dec>	
	ET=+ UT=+00.00.01	DMC_MOVE_GRAT_REL DMC_MOVE_GRAT_REL Command Parameter(s) : SET_POINT_INCREMENT PP078420 Subsch. ID : 90 Det. descr. : MOVE GRATING OF A RELATIVE POSITION	PC113420 117 <dec>	
	ET=+ UT=+00.00.01	DMC_MOVE_GRAT_REL DMC_MOVE_GRAT_REL Command Parameter(s) : SET_POINT_INCREMENT PP078420 Subsch. ID : 90 Det. descr. : MOVE GRATING OF A RELATIVE POSITION	PC113420 117 <dec>	

PACS_Spec_Gra_IST_Full_Charac_OBS
 File: H_COP_PAC_X012.xls
 Author: R. Biggins



Step No.	Time	Activity/Remarks	TC/TLM	Display/ Branch
	ET=+ UT=+00.00.01	DMC_MOVE_GRAT_REL DMC_MOVE_GRAT_REL Command Parameter(s) : SET_POINT_INCREMENT PP078420 Subsch. ID : 90 Det. descr. : MOVE GRATING OF A RELATIVE POSITION	PC113420 117 <dec>	
	ET=+ UT=+00.00.01	DMC_MOVE_GRAT_REL DMC_MOVE_GRAT_REL Command Parameter(s) : SET_POINT_INCREMENT PP078420 Subsch. ID : 90 Det. descr. : MOVE GRATING OF A RELATIVE POSITION	PC113420 117 <dec>	
	ET=+ UT=+00.00.01	DMC_MOVE_GRAT_REL DMC_MOVE_GRAT_REL Command Parameter(s) : SET_POINT_INCREMENT PP078420 Subsch. ID : 90 Det. descr. : MOVE GRATING OF A RELATIVE POSITION	PC113420 -117 <dec>	
	ET=+ UT=+00.00.01	DMC_MOVE_GRAT_REL DMC_MOVE_GRAT_REL Command Parameter(s) : SET_POINT_INCREMENT PP078420 Subsch. ID : 90 Det. descr. : MOVE GRATING OF A RELATIVE POSITION	PC113420 -117 <dec>	
	ET=+ UT=+00.00.01	DMC_MOVE_GRAT_REL DMC_MOVE_GRAT_REL Command Parameter(s) : SET_POINT_INCREMENT PP078420 Subsch. ID : 90 Det. descr. : MOVE GRATING OF A RELATIVE POSITION	PC113420 -117 <dec>	
	ET=+ UT=+00.00.01	DMC_MOVE_GRAT_REL DMC_MOVE_GRAT_REL Command Parameter(s) : SET_POINT_INCREMENT PP078420 Subsch. ID : 90 Det. descr. : MOVE GRATING OF A RELATIVE POSITION	PC113420 -117 <dec>	

PACS_Spec_Gra_IST_Full_Charac_OBS
 File: H_COP_PAC_X012.xls
 Author: R. Biggins



Step No.	Time	Activity/Remarks	TC/TLM	Display/ Branch
	ET=+ UT=+00.00.01	DMC_MOVE_GRAT_REL DMC_MOVE_GRAT_REL Command Parameter(s) : SET_POINT_INCREMENT PP078420 Subsch. ID : 90 Det. descr. : MOVE GRATING OF A RELATIVE POSITION	PC113420 -117 <dec>	
	ET=+ UT=+00.00.01	DMC_MOVE_GRAT_REL DMC_MOVE_GRAT_REL Command Parameter(s) : SET_POINT_INCREMENT PP078420 Subsch. ID : 90 Det. descr. : MOVE GRATING OF A RELATIVE POSITION	PC113420 233010 <dec>	
	ET=+ UT=+00.00.15	DMC_MOVE_GRAT_REL DMC_MOVE_GRAT_REL Command Parameter(s) : SET_POINT_INCREMENT PP078420 Subsch. ID : 90 Det. descr. : MOVE GRATING OF A RELATIVE POSITION	PC113420 117 <dec>	
	ET=+ UT=+00.00.01	DMC_MOVE_GRAT_REL DMC_MOVE_GRAT_REL Command Parameter(s) : SET_POINT_INCREMENT PP078420 Subsch. ID : 90 Det. descr. : MOVE GRATING OF A RELATIVE POSITION	PC113420 117 <dec>	
	ET=+ UT=+00.00.01	DMC_MOVE_GRAT_REL DMC_MOVE_GRAT_REL Command Parameter(s) : SET_POINT_INCREMENT PP078420 Subsch. ID : 90 Det. descr. : MOVE GRATING OF A RELATIVE POSITION	PC113420 117 <dec>	
	ET=+ UT=+00.00.01	DMC_MOVE_GRAT_REL DMC_MOVE_GRAT_REL Command Parameter(s) : SET_POINT_INCREMENT PP078420 Subsch. ID : 90 Det. descr. : MOVE GRATING OF A RELATIVE POSITION	PC113420 117 <dec>	

PACS_Spec_Gra_IST_Full_Charac_OBS
 File: H_COP_PAC_X012.xls
 Author: R. Biggins



Step No.	Time	Activity/Remarks	TC/TLM	Display/ Branch
	ET=+ UT=+00.00.01	DMC_MOVE_GRAT_REL DMC_MOVE_GRAT_REL Command Parameter(s) : SET_POINT_INCREMENT PP078420 Subsch. ID : 90 Det. descr. : MOVE GRATING OF A RELATIVE POSITION	PC113420 117 <dec>	
	ET=+ UT=+00.00.01	DMC_MOVE_GRAT_REL DMC_MOVE_GRAT_REL Command Parameter(s) : SET_POINT_INCREMENT PP078420 Subsch. ID : 90 Det. descr. : MOVE GRATING OF A RELATIVE POSITION	PC113420 -117 <dec>	
	ET=+ UT=+00.00.01	DMC_MOVE_GRAT_REL DMC_MOVE_GRAT_REL Command Parameter(s) : SET_POINT_INCREMENT PP078420 Subsch. ID : 90 Det. descr. : MOVE GRATING OF A RELATIVE POSITION	PC113420 -117 <dec>	
	ET=+ UT=+00.00.01	DMC_MOVE_GRAT_REL DMC_MOVE_GRAT_REL Command Parameter(s) : SET_POINT_INCREMENT PP078420 Subsch. ID : 90 Det. descr. : MOVE GRATING OF A RELATIVE POSITION	PC113420 -117 <dec>	
	ET=+ UT=+00.00.01	DMC_MOVE_GRAT_REL DMC_MOVE_GRAT_REL Command Parameter(s) : SET_POINT_INCREMENT PP078420 Subsch. ID : 90 Det. descr. : MOVE GRATING OF A RELATIVE POSITION	PC113420 -117 <dec>	
	ET=+ UT=+00.00.01	DMC_MOVE_GRAT_REL DMC_MOVE_GRAT_REL Command Parameter(s) : SET_POINT_INCREMENT PP078420 Subsch. ID : 90 Det. descr. : MOVE GRATING OF A RELATIVE POSITION	PC113420 -117 <dec>	

PACS_Spec_Gra_IST_Full_Charac_OBS
 File: H_COP_PAC_X012.xls
 Author: R. Biggins



Step No.	Time	Activity/Remarks	TC/TLM	Display/ Branch
	ET=+ UT=+00.00.01	DMC_MOVE_GRAT_REL DMC_MOVE_GRAT_REL Command Parameter(s) : SET_POINT_INCREMENT PP078420 Subsch. ID : 90 Det. descr. : MOVE GRATING OF A RELATIVE POSITION	PC113420 233010 <dec>	
	ET=+ UT=+00.00.15	DMC_MOVE_GRAT_REL DMC_MOVE_GRAT_REL Command Parameter(s) : SET_POINT_INCREMENT PP078420 Subsch. ID : 90 Det. descr. : MOVE GRATING OF A RELATIVE POSITION	PC113420 117 <dec>	
	ET=+ UT=+00.00.01	DMC_MOVE_GRAT_REL DMC_MOVE_GRAT_REL Command Parameter(s) : SET_POINT_INCREMENT PP078420 Subsch. ID : 90 Det. descr. : MOVE GRATING OF A RELATIVE POSITION	PC113420 117 <dec>	
	ET=+ UT=+00.00.01	DMC_MOVE_GRAT_REL DMC_MOVE_GRAT_REL Command Parameter(s) : SET_POINT_INCREMENT PP078420 Subsch. ID : 90 Det. descr. : MOVE GRATING OF A RELATIVE POSITION	PC113420 117 <dec>	
	ET=+ UT=+00.00.01	DMC_MOVE_GRAT_REL DMC_MOVE_GRAT_REL Command Parameter(s) : SET_POINT_INCREMENT PP078420 Subsch. ID : 90 Det. descr. : MOVE GRATING OF A RELATIVE POSITION	PC113420 117 <dec>	
	ET=+ UT=+00.00.01	DMC_MOVE_GRAT_REL DMC_MOVE_GRAT_REL Command Parameter(s) : SET_POINT_INCREMENT PP078420 Subsch. ID : 90 Det. descr. : MOVE GRATING OF A RELATIVE POSITION	PC113420 117 <dec>	

PACS_Spec_Gra_IST_Full_Charac_OBS
 File: H_COP_PAC_X012.xls
 Author: R. Biggins



Step No.	Time	Activity/Remarks	TC/TLM	Display/ Branch
	ET=+ UT=+00.00.01	DMC_MOVE_GRAT_REL DMC_MOVE_GRAT_REL Command Parameter(s) : SET_POINT_INCREMENT PP078420 Subsch. ID : 90 Det. descr. : MOVE GRATING OF A RELATIVE POSITION	PC113420 -117 <dec>	
	ET=+ UT=+00.00.01	DMC_MOVE_GRAT_REL DMC_MOVE_GRAT_REL Command Parameter(s) : SET_POINT_INCREMENT PP078420 Subsch. ID : 90 Det. descr. : MOVE GRATING OF A RELATIVE POSITION	PC113420 -117 <dec>	
	ET=+ UT=+00.00.01	DMC_MOVE_GRAT_REL DMC_MOVE_GRAT_REL Command Parameter(s) : SET_POINT_INCREMENT PP078420 Subsch. ID : 90 Det. descr. : MOVE GRATING OF A RELATIVE POSITION	PC113420 -117 <dec>	
	ET=+ UT=+00.00.01	DMC_MOVE_GRAT_REL DMC_MOVE_GRAT_REL Command Parameter(s) : SET_POINT_INCREMENT PP078420 Subsch. ID : 90 Det. descr. : MOVE GRATING OF A RELATIVE POSITION	PC113420 -117 <dec>	
	ET=+ UT=+00.00.01	DMC_MOVE_GRAT_REL DMC_MOVE_GRAT_REL Command Parameter(s) : SET_POINT_INCREMENT PP078420 Subsch. ID : 90 Det. descr. : MOVE GRATING OF A RELATIVE POSITION	PC113420 -117 <dec>	
	ET=+ UT=+00.00.01	DMC_MOVE_GRAT_REL DMC_MOVE_GRAT_REL Command Parameter(s) : SET_POINT_INCREMENT PP078420 Subsch. ID : 90 Det. descr. : MOVE GRATING OF A RELATIVE POSITION	PC113420 233010 <dec>	

PACS_Spec_Gra_IST_Full_Charac_OBS
 File: H_COP_PAC_X012.xls
 Author: R. Biggins



Step No.	Time	Activity/Remarks	TC/TLM	Display/ Branch
	ET=+ UT=+00.00.15	DMC_MOVE_GRAT_REL DMC_MOVE_GRAT_REL Command Parameter(s) : SET_POINT_INCREMENT PP078420 Subsch. ID : 90 Det. descr. : MOVE GRATING OF A RELATIVE POSITION	PC113420 117 <dec>	
	ET=+ UT=+00.00.01	DMC_MOVE_GRAT_REL DMC_MOVE_GRAT_REL Command Parameter(s) : SET_POINT_INCREMENT PP078420 Subsch. ID : 90 Det. descr. : MOVE GRATING OF A RELATIVE POSITION	PC113420 117 <dec>	
	ET=+ UT=+00.00.01	DMC_MOVE_GRAT_REL DMC_MOVE_GRAT_REL Command Parameter(s) : SET_POINT_INCREMENT PP078420 Subsch. ID : 90 Det. descr. : MOVE GRATING OF A RELATIVE POSITION	PC113420 117 <dec>	
	ET=+ UT=+00.00.01	DMC_MOVE_GRAT_REL DMC_MOVE_GRAT_REL Command Parameter(s) : SET_POINT_INCREMENT PP078420 Subsch. ID : 90 Det. descr. : MOVE GRATING OF A RELATIVE POSITION	PC113420 117 <dec>	
	ET=+ UT=+00.00.01	DMC_MOVE_GRAT_REL DMC_MOVE_GRAT_REL Command Parameter(s) : SET_POINT_INCREMENT PP078420 Subsch. ID : 90 Det. descr. : MOVE GRATING OF A RELATIVE POSITION	PC113420 117 <dec>	
	ET=+ UT=+00.00.01	DMC_MOVE_GRAT_REL DMC_MOVE_GRAT_REL Command Parameter(s) : SET_POINT_INCREMENT PP078420 Subsch. ID : 90 Det. descr. : MOVE GRATING OF A RELATIVE POSITION	PC113420 -117 <dec>	

PACS_Spec_Gra_IST_Full_Charac_OBS
 File: H_COP_PAC_X012.xls
 Author: R. Biggins



Step No.	Time	Activity/Remarks	TC/TLM	Display/ Branch
	ET=+ UT=+00.00.01	DMC_MOVE_GRAT_REL DMC_MOVE_GRAT_REL Command Parameter(s) : SET_POINT_INCREMENT PP078420 Subsch. ID : 90 Det. descr. : MOVE GRATING OF A RELATIVE POSITION	PC113420 -117 <dec>	
	ET=+ UT=+00.00.01	DMC_MOVE_GRAT_REL DMC_MOVE_GRAT_REL Command Parameter(s) : SET_POINT_INCREMENT PP078420 Subsch. ID : 90 Det. descr. : MOVE GRATING OF A RELATIVE POSITION	PC113420 -117 <dec>	
	ET=+ UT=+00.00.01	DMC_MOVE_GRAT_REL DMC_MOVE_GRAT_REL Command Parameter(s) : SET_POINT_INCREMENT PP078420 Subsch. ID : 90 Det. descr. : MOVE GRATING OF A RELATIVE POSITION	PC113420 -117 <dec>	
	ET=+ UT=+00.00.01	DMC_MOVE_GRAT_REL DMC_MOVE_GRAT_REL Command Parameter(s) : SET_POINT_INCREMENT PP078420 Subsch. ID : 90 Det. descr. : MOVE GRATING OF A RELATIVE POSITION	PC113420 -117 <dec>	
	ET=+ UT=+00.00.01	DMC_MOVE_GRAT_ABS DMC_MOVE_GRAT_ABS Command Parameter(s) : SET_POINT PP079420 Subsch. ID : 90 Det. descr. : MOVE GRATING TO AN ABSOLUTE POSITION	PC112420 500000 <dec>	
11		Full characterisation with movements of all amplitudes		Next Step: 12
11.1		Block 1 (bottom upwards)		<input type="checkbox"/>

PACS_Spec_Gra_IST_Full_Charac_OBS
 File: H_COP_PAC_X012.xls
 Author: R. Biggins



Step No.	Time	Activity/Remarks	TC/TLM	Display/ Branch
	ET=+ UT=+00.00.45	DMC_SET_BBID DMC_SET_BBID Command Parameter(s) : BUILDING_BLOCK_ID PP070420 Subsch. ID : 90 Det. descr. : SET BBID IN DMC	PC079420 1080492034 <dec>	
	ET=+ UT=+00.00.01	DMC_MOVE_GRAT_ABS_RAW DMC_MOVE_GRAT_ABS Command Parameter(s) : SET_POINT PP079420 Subsch. ID : 90 Det. descr. : MOVE GRATING TO AN ABSOLUTE POSITION	PC112420 66000 <dec>	
	ET=+ UT=+00.00.25	DMC_SET_BBID DMC_SET_BBID Command Parameter(s) : BUILDING_BLOCK_ID PP070420 Subsch. ID : 90 Det. descr. : SET BBID IN DMC	PC079420 1080557569 <dec>	
	ET=+ UT=+00.00.01	DMC_MOVE_GRAT_REL_RAW DMC_MOVE_GRAT_REL Command Parameter(s) : SET_POINT_INCREMENT PP078420 Subsch. ID : 90 Det. descr. : MOVE GRATING OF A RELATIVE POSITION	PC113420 117 <dec>	
	ET=+ UT=+00.00.03	DMC_MOVE_GRAT_REL_RAW DMC_MOVE_GRAT_REL Command Parameter(s) : SET_POINT_INCREMENT PP078420 Subsch. ID : 90 Det. descr. : MOVE GRATING OF A RELATIVE POSITION	PC113420 117 <dec>	
	ET=+ UT=+00.00.03	DMC_MOVE_GRAT_REL_RAW DMC_MOVE_GRAT_REL Command Parameter(s) : SET_POINT_INCREMENT PP078420 Subsch. ID : 90 Det. descr. : MOVE GRATING OF A RELATIVE POSITION	PC113420 117 <dec>	

PACS_Spec_Gra_IST_Full_Charac_OBS
 File: H_COP_PAC_X012.xls
 Author: R. Biggins



Step No.	Time	Activity/Remarks	TC/TLM	Display/ Branch
	ET=+ UT=+00.00.03	DMC_SET_BBID DMC_SET_BBID Command Parameter(s) : BUILDING_BLOCK_ID PP070420 Subsch. ID : 90 Det. descr. : SET BBID IN DMC	PC079420 1080557570 <dec>	
	ET=+ UT=+00.00.01	DMC_MOVE_GRAT_REL_RAW DMC_MOVE_GRAT_REL Command Parameter(s) : SET_POINT_INCREMENT PP078420 Subsch. ID : 90 Det. descr. : MOVE GRATING OF A RELATIVE POSITION	PC113420 233 <dec>	
	ET=+ UT=+00.00.03	DMC_MOVE_GRAT_REL_RAW DMC_MOVE_GRAT_REL Command Parameter(s) : SET_POINT_INCREMENT PP078420 Subsch. ID : 90 Det. descr. : MOVE GRATING OF A RELATIVE POSITION	PC113420 233 <dec>	
	ET=+ UT=+00.00.03	DMC_MOVE_GRAT_REL_RAW DMC_MOVE_GRAT_REL Command Parameter(s) : SET_POINT_INCREMENT PP078420 Subsch. ID : 90 Det. descr. : MOVE GRATING OF A RELATIVE POSITION	PC113420 233 <dec>	
	ET=+ UT=+00.00.03	DMC_SET_BBID DMC_SET_BBID Command Parameter(s) : BUILDING_BLOCK_ID PP070420 Subsch. ID : 90 Det. descr. : SET BBID IN DMC	PC079420 1080557571 <dec>	
	ET=+ UT=+00.00.01	DMC_MOVE_GRAT_REL_RAW DMC_MOVE_GRAT_REL Command Parameter(s) : SET_POINT_INCREMENT PP078420 Subsch. ID : 90 Det. descr. : MOVE GRATING OF A RELATIVE POSITION	PC113420 350 <dec>	

PACS_Spec_Gra_IST_Full_Charac_OBS
 File: H_COP_PAC_X012.xls
 Author: R. Biggins



Step No.	Time	Activity/Remarks	TC/TLM	Display/ Branch
	ET=+ UT=+00.00.03	DMC_MOVE_GRAT_REL_RAW DMC_MOVE_GRAT_REL Command Parameter(s) : SET_POINT_INCREMENT PP078420 Subsch. ID : 90 Det. descr. : MOVE GRATING OF A RELATIVE POSITION	PC113420 350 <dec>	
	ET=+ UT=+00.00.03	DMC_MOVE_GRAT_REL_RAW DMC_MOVE_GRAT_REL Command Parameter(s) : SET_POINT_INCREMENT PP078420 Subsch. ID : 90 Det. descr. : MOVE GRATING OF A RELATIVE POSITION	PC113420 350 <dec>	
	ET=+ UT=+00.00.03	DMC_SET_BBID DMC_SET_BBID Command Parameter(s) : BUILDING_BLOCK_ID PP070420 Subsch. ID : 90 Det. descr. : SET BBID IN DMC	PC079420 1080557572 <dec>	
	ET=+ UT=+00.00.01	DMC_MOVE_GRAT_REL_RAW DMC_MOVE_GRAT_REL Command Parameter(s) : SET_POINT_INCREMENT PP078420 Subsch. ID : 90 Det. descr. : MOVE GRATING OF A RELATIVE POSITION	PC113420 400 <dec>	
	ET=+ UT=+00.00.03	DMC_MOVE_GRAT_REL_RAW DMC_MOVE_GRAT_REL Command Parameter(s) : SET_POINT_INCREMENT PP078420 Subsch. ID : 90 Det. descr. : MOVE GRATING OF A RELATIVE POSITION	PC113420 400 <dec>	
	ET=+ UT=+00.00.03	DMC_MOVE_GRAT_REL_RAW DMC_MOVE_GRAT_REL Command Parameter(s) : SET_POINT_INCREMENT PP078420 Subsch. ID : 90 Det. descr. : MOVE GRATING OF A RELATIVE POSITION	PC113420 400 <dec>	

PACS_Spec_Gra_IST_Full_Charac_OBS
 File: H_COP_PAC_X012.xls
 Author: R. Biggins



Step No.	Time	Activity/Remarks	TC/TLM	Display/ Branch
	ET=+ UT=+00.00.03	DMC_SET_BBID DMC_SET_BBID Command Parameter(s) : BUILDING_BLOCK_ID PP070420 Subsch. ID : 90 Det. descr. : SET BBID IN DMC	PC079420 1080557573 <dec>	
	ET=+ UT=+00.00.01	DMC_MOVE_GRAT_REL_RAW DMC_MOVE_GRAT_REL Command Parameter(s) : SET_POINT_INCREMENT PP078420 Subsch. ID : 90 Det. descr. : MOVE GRATING OF A RELATIVE POSITION	PC113420 600 <dec>	
	ET=+ UT=+00.00.03	DMC_MOVE_GRAT_REL_RAW DMC_MOVE_GRAT_REL Command Parameter(s) : SET_POINT_INCREMENT PP078420 Subsch. ID : 90 Det. descr. : MOVE GRATING OF A RELATIVE POSITION	PC113420 600 <dec>	
	ET=+ UT=+00.00.03	DMC_MOVE_GRAT_REL_RAW DMC_MOVE_GRAT_REL Command Parameter(s) : SET_POINT_INCREMENT PP078420 Subsch. ID : 90 Det. descr. : MOVE GRATING OF A RELATIVE POSITION	PC113420 600 <dec>	
	ET=+ UT=+00.00.03	DMC_SET_BBID DMC_SET_BBID Command Parameter(s) : BUILDING_BLOCK_ID PP070420 Subsch. ID : 90 Det. descr. : SET BBID IN DMC	PC079420 1080557574 <dec>	
	ET=+ UT=+00.00.01	DMC_MOVE_GRAT_REL_RAW DMC_MOVE_GRAT_REL Command Parameter(s) : SET_POINT_INCREMENT PP078420 Subsch. ID : 90 Det. descr. : MOVE GRATING OF A RELATIVE POSITION	PC113420 900 <dec>	

PACS_Spec_Gra_IST_Full_Charac_OBS
 File: H_COP_PAC_X012.xls
 Author: R. Biggins



Step No.	Time	Activity/Remarks	TC/TLM	Display/ Branch
	ET=+ UT=+00.00.03	DMC_MOVE_GRAT_REL_RAW DMC_MOVE_GRAT_REL Command Parameter(s) : SET_POINT_INCREMENT PP078420 Subsch. ID : 90 Det. descr. : MOVE GRATING OF A RELATIVE POSITION	PC113420 900 <dec>	
	ET=+ UT=+00.00.03	DMC_MOVE_GRAT_REL_RAW DMC_MOVE_GRAT_REL Command Parameter(s) : SET_POINT_INCREMENT PP078420 Subsch. ID : 90 Det. descr. : MOVE GRATING OF A RELATIVE POSITION	PC113420 900 <dec>	
	ET=+ UT=+00.00.03	DMC_SET_BBID DMC_SET_BBID Command Parameter(s) : BUILDING_BLOCK_ID PP070420 Subsch. ID : 90 Det. descr. : SET BBID IN DMC	PC079420 1080557575 <dec>	
	ET=+ UT=+00.00.01	DMC_MOVE_GRAT_REL_RAW DMC_MOVE_GRAT_REL Command Parameter(s) : SET_POINT_INCREMENT PP078420 Subsch. ID : 90 Det. descr. : MOVE GRATING OF A RELATIVE POSITION	PC113420 1200 <dec>	
	ET=+ UT=+00.00.03	DMC_MOVE_GRAT_REL_RAW DMC_MOVE_GRAT_REL Command Parameter(s) : SET_POINT_INCREMENT PP078420 Subsch. ID : 90 Det. descr. : MOVE GRATING OF A RELATIVE POSITION	PC113420 1200 <dec>	
	ET=+ UT=+00.00.03	DMC_MOVE_GRAT_REL_RAW DMC_MOVE_GRAT_REL Command Parameter(s) : SET_POINT_INCREMENT PP078420 Subsch. ID : 90 Det. descr. : MOVE GRATING OF A RELATIVE POSITION	PC113420 1200 <dec>	

PACS_Spec_Gra_IST_Full_Charac_OBS
 File: H_COP_PAC_X012.xls
 Author: R. Biggins



Step No.	Time	Activity/Remarks	TC/TLM	Display/ Branch
	ET=+ UT=+00.00.03	DMC_SET_BBID DMC_SET_BBID Command Parameter(s) : BUILDING_BLOCK_ID PP070420 Subsch. ID : 90 Det. descr. : SET BBID IN DMC	PC079420 1080557576 <dec>	
	ET=+ UT=+00.00.01	DMC_MOVE_GRAT_REL_RAW DMC_MOVE_GRAT_REL Command Parameter(s) : SET_POINT_INCREMENT PP078420 Subsch. ID : 90 Det. descr. : MOVE GRATING OF A RELATIVE POSITION	PC113420 1748 <dec>	
	ET=+ UT=+00.00.03	DMC_MOVE_GRAT_REL_RAW DMC_MOVE_GRAT_REL Command Parameter(s) : SET_POINT_INCREMENT PP078420 Subsch. ID : 90 Det. descr. : MOVE GRATING OF A RELATIVE POSITION	PC113420 1748 <dec>	
	ET=+ UT=+00.00.03	DMC_MOVE_GRAT_REL_RAW DMC_MOVE_GRAT_REL Command Parameter(s) : SET_POINT_INCREMENT PP078420 Subsch. ID : 90 Det. descr. : MOVE GRATING OF A RELATIVE POSITION	PC113420 1748 <dec>	
	ET=+ UT=+00.00.03	DMC_SET_BBID DMC_SET_BBID Command Parameter(s) : BUILDING_BLOCK_ID PP070420 Subsch. ID : 90 Det. descr. : SET BBID IN DMC	PC079420 1080557577 <dec>	
	ET=+ UT=+00.00.01	DMC_MOVE_GRAT_REL_RAW DMC_MOVE_GRAT_REL Command Parameter(s) : SET_POINT_INCREMENT PP078420 Subsch. ID : 90 Det. descr. : MOVE GRATING OF A RELATIVE POSITION	PC113420 2400 <dec>	

PACS_Spec_Gra_IST_Full_Charac_OBS
 File: H_COP_PAC_X012.xls
 Author: R. Biggins



Step No.	Time	Activity/Remarks	TC/TLM	Display/ Branch
	ET=+ UT=+00.00.03	DMC_MOVE_GRAT_REL_RAW DMC_MOVE_GRAT_REL Command Parameter(s) : SET_POINT_INCREMENT PP078420 Subsch. ID : 90 Det. descr. : MOVE GRATING OF A RELATIVE POSITION	PC113420 2400 <dec>	
	ET=+ UT=+00.00.03	DMC_MOVE_GRAT_REL_RAW DMC_MOVE_GRAT_REL Command Parameter(s) : SET_POINT_INCREMENT PP078420 Subsch. ID : 90 Det. descr. : MOVE GRATING OF A RELATIVE POSITION	PC113420 2400 <dec>	
	ET=+ UT=+00.00.03	DMC_SET_BBID DMC_SET_BBID Command Parameter(s) : BUILDING_BLOCK_ID PP070420 Subsch. ID : 90 Det. descr. : SET BBID IN DMC	PC079420 1080557578 <dec>	
	ET=+ UT=+00.00.01	DMC_MOVE_GRAT_REL_RAW DMC_MOVE_GRAT_REL Command Parameter(s) : SET_POINT_INCREMENT PP078420 Subsch. ID : 90 Det. descr. : MOVE GRATING OF A RELATIVE POSITION	PC113420 5825 <dec>	
	ET=+ UT=+00.00.03	DMC_MOVE_GRAT_REL_RAW DMC_MOVE_GRAT_REL Command Parameter(s) : SET_POINT_INCREMENT PP078420 Subsch. ID : 90 Det. descr. : MOVE GRATING OF A RELATIVE POSITION	PC113420 5825 <dec>	
	ET=+ UT=+00.00.03	DMC_MOVE_GRAT_REL_RAW DMC_MOVE_GRAT_REL Command Parameter(s) : SET_POINT_INCREMENT PP078420 Subsch. ID : 90 Det. descr. : MOVE GRATING OF A RELATIVE POSITION	PC113420 5825 <dec>	

PACS_Spec_Gra_IST_Full_Charac_OBS
 File: H_COP_PAC_X012.xls
 Author: R. Biggins



Step No.	Time	Activity/Remarks	TC/TLM	Display/ Branch
	ET=+ UT=+00.00.03	DMC_SET_BBID DMC_SET_BBID Command Parameter(s) : BUILDING_BLOCK_ID PP070420 Subsch. ID : 90 Det. descr. : SET BBID IN DMC	PC079420 1080557579 <dec>	
	ET=+ UT=+00.00.01	DMC_MOVE_GRAT_REL_RAW DMC_MOVE_GRAT_REL Command Parameter(s) : SET_POINT_INCREMENT PP078420 Subsch. ID : 90 Det. descr. : MOVE GRATING OF A RELATIVE POSITION	PC113420 11650 <dec>	
	ET=+ UT=+00.00.03	DMC_MOVE_GRAT_REL_RAW DMC_MOVE_GRAT_REL Command Parameter(s) : SET_POINT_INCREMENT PP078420 Subsch. ID : 90 Det. descr. : MOVE GRATING OF A RELATIVE POSITION	PC113420 11650 <dec>	
	ET=+ UT=+00.00.03	DMC_MOVE_GRAT_REL_RAW DMC_MOVE_GRAT_REL Command Parameter(s) : SET_POINT_INCREMENT PP078420 Subsch. ID : 90 Det. descr. : MOVE GRATING OF A RELATIVE POSITION	PC113420 11650 <dec>	
	ET=+ UT=+00.00.03	DMC_SET_BBID DMC_SET_BBID Command Parameter(s) : BUILDING_BLOCK_ID PP070420 Subsch. ID : 90 Det. descr. : SET BBID IN DMC	PC079420 1080557580 <dec>	
	ET=+ UT=+00.00.01	DMC_MOVE_GRAT_REL_RAW DMC_MOVE_GRAT_REL Command Parameter(s) : SET_POINT_INCREMENT PP078420 Subsch. ID : 90 Det. descr. : MOVE GRATING OF A RELATIVE POSITION	PC113420 23301 <dec>	

PACS_Spec_Gra_IST_Full_Charac_OBS
 File: H_COP_PAC_X012.xls
 Author: R. Biggins



Step No.	Time	Activity/Remarks	TC/TLM	Display/ Branch
	ET=+ UT=+00.00.03	DMC_MOVE_GRAT_REL_RAW DMC_MOVE_GRAT_REL Command Parameter(s) : SET_POINT_INCREMENT PP078420 Subsch. ID : 90 Det. descr. : MOVE GRATING OF A RELATIVE POSITION	PC113420 23301 <dec>	
	ET=+ UT=+00.00.03	DMC_MOVE_GRAT_REL_RAW DMC_MOVE_GRAT_REL Command Parameter(s) : SET_POINT_INCREMENT PP078420 Subsch. ID : 90 Det. descr. : MOVE GRATING OF A RELATIVE POSITION	PC113420 23301 <dec>	
	ET=+ UT=+00.00.03	DMC_SET_BBID DMC_SET_BBID Command Parameter(s) : BUILDING_BLOCK_ID PP070420 Subsch. ID : 90 Det. descr. : SET BBID IN DMC	PC079420 1080557581 <dec>	
	ET=+ UT=+00.00.01	DMC_MOVE_GRAT_REL_RAW DMC_MOVE_GRAT_REL Command Parameter(s) : SET_POINT_INCREMENT PP078420 Subsch. ID : 90 Det. descr. : MOVE GRATING OF A RELATIVE POSITION	PC113420 69903 <dec>	
	ET=+ UT=+00.00.05	DMC_MOVE_GRAT_REL_RAW DMC_MOVE_GRAT_REL Command Parameter(s) : SET_POINT_INCREMENT PP078420 Subsch. ID : 90 Det. descr. : MOVE GRATING OF A RELATIVE POSITION	PC113420 69903 <dec>	
	ET=+ UT=+00.00.05	DMC_MOVE_GRAT_REL_RAW DMC_MOVE_GRAT_REL Command Parameter(s) : SET_POINT_INCREMENT PP078420 Subsch. ID : 90 Det. descr. : MOVE GRATING OF A RELATIVE POSITION	PC113420 69903 <dec>	
11.2		Block 2 (center upwards)		<input type="checkbox"/>

PACS_Spec_Gra_IST_Full_Charac_OBS
 File: H_COP_PAC_X012.xls
 Author: R. Biggins



Step No.	Time	Activity/Remarks	TC/TLM	Display/ Branch
	ET=+ UT=+00.00.05	DMC_SET_BBID DMC_SET_BBID Command Parameter(s) : BUILDING_BLOCK_ID PP070420 Subsch. ID : 90 Det. descr. : SET BBID IN DMC	PC079420 1080492035 <dec>	
	ET=+ UT=+00.00.01	DMC_MOVE_GRAT_ABS_RAW DMC_MOVE_GRAT_ABS Command Parameter(s) : SET_POINT PP079420 Subsch. ID : 90 Det. descr. : MOVE GRATING TO AN ABSOLUTE POSITION	PC112420 500000 <dec>	
	ET=+ UT=+00.00.25	DMC_SET_BBID DMC_SET_BBID Command Parameter(s) : BUILDING_BLOCK_ID PP070420 Subsch. ID : 90 Det. descr. : SET BBID IN DMC	PC079420 1080557582 <dec>	
	ET=+ UT=+00.00.01	DMC_MOVE_GRAT_REL_RAW DMC_MOVE_GRAT_REL Command Parameter(s) : SET_POINT_INCREMENT PP078420 Subsch. ID : 90 Det. descr. : MOVE GRATING OF A RELATIVE POSITION	PC113420 117 <dec>	
	ET=+ UT=+00.00.03	DMC_MOVE_GRAT_REL_RAW DMC_MOVE_GRAT_REL Command Parameter(s) : SET_POINT_INCREMENT PP078420 Subsch. ID : 90 Det. descr. : MOVE GRATING OF A RELATIVE POSITION	PC113420 117 <dec>	
	ET=+ UT=+00.00.03	DMC_MOVE_GRAT_REL_RAW DMC_MOVE_GRAT_REL Command Parameter(s) : SET_POINT_INCREMENT PP078420 Subsch. ID : 90 Det. descr. : MOVE GRATING OF A RELATIVE POSITION	PC113420 117 <dec>	

PACS_Spec_Gra_IST_Full_Charac_OBS
 File: H_COP_PAC_X012.xls
 Author: R. Biggins



Step No.	Time	Activity/Remarks	TC/TLM	Display/ Branch
	ET=+ UT=+00.00.03	DMC_SET_BBID DMC_SET_BBID Command Parameter(s) : BUILDING_BLOCK_ID PP070420 Subsch. ID : 90 Det. descr. : SET BBID IN DMC	PC079420 1080557583 <dec>	
	ET=+ UT=+00.00.01	DMC_MOVE_GRAT_REL_RAW DMC_MOVE_GRAT_REL Command Parameter(s) : SET_POINT_INCREMENT PP078420 Subsch. ID : 90 Det. descr. : MOVE GRATING OF A RELATIVE POSITION	PC113420 233 <dec>	
	ET=+ UT=+00.00.03	DMC_MOVE_GRAT_REL_RAW DMC_MOVE_GRAT_REL Command Parameter(s) : SET_POINT_INCREMENT PP078420 Subsch. ID : 90 Det. descr. : MOVE GRATING OF A RELATIVE POSITION	PC113420 233 <dec>	
	ET=+ UT=+00.00.03	DMC_MOVE_GRAT_REL_RAW DMC_MOVE_GRAT_REL Command Parameter(s) : SET_POINT_INCREMENT PP078420 Subsch. ID : 90 Det. descr. : MOVE GRATING OF A RELATIVE POSITION	PC113420 233 <dec>	
	ET=+ UT=+00.00.03	DMC_SET_BBID DMC_SET_BBID Command Parameter(s) : BUILDING_BLOCK_ID PP070420 Subsch. ID : 90 Det. descr. : SET BBID IN DMC	PC079420 1080557584 <dec>	
	ET=+ UT=+00.00.01	DMC_MOVE_GRAT_REL_RAW DMC_MOVE_GRAT_REL Command Parameter(s) : SET_POINT_INCREMENT PP078420 Subsch. ID : 90 Det. descr. : MOVE GRATING OF A RELATIVE POSITION	PC113420 350 <dec>	

PACS_Spec_Gra_IST_Full_Charac_OBS
 File: H_COP_PAC_X012.xls
 Author: R. Biggins



Step No.	Time	Activity/Remarks	TC/TLM	Display/ Branch
	ET=+ UT=+00.00.03	DMC_MOVE_GRAT_REL_RAW DMC_MOVE_GRAT_REL Command Parameter(s) : SET_POINT_INCREMENT PP078420 Subsch. ID : 90 Det. descr. : MOVE GRATING OF A RELATIVE POSITION	PC113420 350 <dec>	
	ET=+ UT=+00.00.03	DMC_MOVE_GRAT_REL_RAW DMC_MOVE_GRAT_REL Command Parameter(s) : SET_POINT_INCREMENT PP078420 Subsch. ID : 90 Det. descr. : MOVE GRATING OF A RELATIVE POSITION	PC113420 350 <dec>	
	ET=+ UT=+00.00.03	DMC_SET_BBID DMC_SET_BBID Command Parameter(s) : BUILDING_BLOCK_ID PP070420 Subsch. ID : 90 Det. descr. : SET BBID IN DMC	PC079420 1080557585 <dec>	
	ET=+ UT=+00.00.01	DMC_MOVE_GRAT_REL_RAW DMC_MOVE_GRAT_REL Command Parameter(s) : SET_POINT_INCREMENT PP078420 Subsch. ID : 90 Det. descr. : MOVE GRATING OF A RELATIVE POSITION	PC113420 400 <dec>	
	ET=+ UT=+00.00.03	DMC_MOVE_GRAT_REL_RAW DMC_MOVE_GRAT_REL Command Parameter(s) : SET_POINT_INCREMENT PP078420 Subsch. ID : 90 Det. descr. : MOVE GRATING OF A RELATIVE POSITION	PC113420 400 <dec>	
	ET=+ UT=+00.00.03	DMC_MOVE_GRAT_REL_RAW DMC_MOVE_GRAT_REL Command Parameter(s) : SET_POINT_INCREMENT PP078420 Subsch. ID : 90 Det. descr. : MOVE GRATING OF A RELATIVE POSITION	PC113420 400 <dec>	

PACS_Spec_Gra_IST_Full_Charac_OBS
 File: H_COP_PAC_X012.xls
 Author: R. Biggins



Step No.	Time	Activity/Remarks	TC/TLM	Display/ Branch
	ET=+ UT=+00.00.03	DMC_SET_BBID DMC_SET_BBID Command Parameter(s) : BUILDING_BLOCK_ID PP070420 Subsch. ID : 90 Det. descr. : SET BBID IN DMC	PC079420 1080557586 <dec>	
	ET=+ UT=+00.00.01	DMC_MOVE_GRAT_REL_RAW DMC_MOVE_GRAT_REL Command Parameter(s) : SET_POINT_INCREMENT PP078420 Subsch. ID : 90 Det. descr. : MOVE GRATING OF A RELATIVE POSITION	PC113420 600 <dec>	
	ET=+ UT=+00.00.03	DMC_MOVE_GRAT_REL_RAW DMC_MOVE_GRAT_REL Command Parameter(s) : SET_POINT_INCREMENT PP078420 Subsch. ID : 90 Det. descr. : MOVE GRATING OF A RELATIVE POSITION	PC113420 600 <dec>	
	ET=+ UT=+00.00.03	DMC_MOVE_GRAT_REL_RAW DMC_MOVE_GRAT_REL Command Parameter(s) : SET_POINT_INCREMENT PP078420 Subsch. ID : 90 Det. descr. : MOVE GRATING OF A RELATIVE POSITION	PC113420 600 <dec>	
	ET=+ UT=+00.00.03	DMC_SET_BBID DMC_SET_BBID Command Parameter(s) : BUILDING_BLOCK_ID PP070420 Subsch. ID : 90 Det. descr. : SET BBID IN DMC	PC079420 1080557587 <dec>	
	ET=+ UT=+00.00.01	DMC_MOVE_GRAT_REL_RAW DMC_MOVE_GRAT_REL Command Parameter(s) : SET_POINT_INCREMENT PP078420 Subsch. ID : 90 Det. descr. : MOVE GRATING OF A RELATIVE POSITION	PC113420 900 <dec>	

PACS_Spec_Gra_IST_Full_Charac_OBS
 File: H_COP_PAC_X012.xls
 Author: R. Biggins



Step No.	Time	Activity/Remarks	TC/TLM	Display/ Branch
	ET=+ UT=+00.00.03	DMC_MOVE_GRAT_REL_RAW DMC_MOVE_GRAT_REL Command Parameter(s) : SET_POINT_INCREMENT PP078420 Subsch. ID : 90 Det. descr. : MOVE GRATING OF A RELATIVE POSITION	PC113420 900 <dec>	
	ET=+ UT=+00.00.03	DMC_MOVE_GRAT_REL_RAW DMC_MOVE_GRAT_REL Command Parameter(s) : SET_POINT_INCREMENT PP078420 Subsch. ID : 90 Det. descr. : MOVE GRATING OF A RELATIVE POSITION	PC113420 900 <dec>	
	ET=+ UT=+00.00.03	DMC_SET_BBID DMC_SET_BBID Command Parameter(s) : BUILDING_BLOCK_ID PP070420 Subsch. ID : 90 Det. descr. : SET BBID IN DMC	PC079420 1080557588 <dec>	
	ET=+ UT=+00.00.01	DMC_MOVE_GRAT_REL_RAW DMC_MOVE_GRAT_REL Command Parameter(s) : SET_POINT_INCREMENT PP078420 Subsch. ID : 90 Det. descr. : MOVE GRATING OF A RELATIVE POSITION	PC113420 1200 <dec>	
	ET=+ UT=+00.00.03	DMC_MOVE_GRAT_REL_RAW DMC_MOVE_GRAT_REL Command Parameter(s) : SET_POINT_INCREMENT PP078420 Subsch. ID : 90 Det. descr. : MOVE GRATING OF A RELATIVE POSITION	PC113420 1200 <dec>	
	ET=+ UT=+00.00.03	DMC_MOVE_GRAT_REL_RAW DMC_MOVE_GRAT_REL Command Parameter(s) : SET_POINT_INCREMENT PP078420 Subsch. ID : 90 Det. descr. : MOVE GRATING OF A RELATIVE POSITION	PC113420 1200 <dec>	

PACS_Spec_Gra_IST_Full_Charac_OBS
 File: H_COP_PAC_X012.xls
 Author: R. Biggins



Step No.	Time	Activity/Remarks	TC/TLM	Display/ Branch
	ET=+ UT=+00.00.03	DMC_SET_BBID DMC_SET_BBID Command Parameter(s) : BUILDING_BLOCK_ID PP070420 Subsch. ID : 90 Det. descr. : SET BBID IN DMC	PC079420 1080557589 <dec>	
	ET=+ UT=+00.00.01	DMC_MOVE_GRAT_REL_RAW DMC_MOVE_GRAT_REL Command Parameter(s) : SET_POINT_INCREMENT PP078420 Subsch. ID : 90 Det. descr. : MOVE GRATING OF A RELATIVE POSITION	PC113420 1748 <dec>	
	ET=+ UT=+00.00.03	DMC_MOVE_GRAT_REL_RAW DMC_MOVE_GRAT_REL Command Parameter(s) : SET_POINT_INCREMENT PP078420 Subsch. ID : 90 Det. descr. : MOVE GRATING OF A RELATIVE POSITION	PC113420 1748 <dec>	
	ET=+ UT=+00.00.03	DMC_MOVE_GRAT_REL_RAW DMC_MOVE_GRAT_REL Command Parameter(s) : SET_POINT_INCREMENT PP078420 Subsch. ID : 90 Det. descr. : MOVE GRATING OF A RELATIVE POSITION	PC113420 1748 <dec>	
	ET=+ UT=+00.00.03	DMC_SET_BBID DMC_SET_BBID Command Parameter(s) : BUILDING_BLOCK_ID PP070420 Subsch. ID : 90 Det. descr. : SET BBID IN DMC	PC079420 1080557590 <dec>	
	ET=+ UT=+00.00.01	DMC_MOVE_GRAT_REL_RAW DMC_MOVE_GRAT_REL Command Parameter(s) : SET_POINT_INCREMENT PP078420 Subsch. ID : 90 Det. descr. : MOVE GRATING OF A RELATIVE POSITION	PC113420 2400 <dec>	

PACS_Spec_Gra_IST_Full_Charac_OBS
 File: H_COP_PAC_X012.xls
 Author: R. Biggins



Step No.	Time	Activity/Remarks	TC/TLM	Display/ Branch
	ET=+ UT=+00.00.03	DMC_MOVE_GRAT_REL_RAW DMC_MOVE_GRAT_REL Command Parameter(s) : SET_POINT_INCREMENT PP078420 Subsch. ID : 90 Det. descr. : MOVE GRATING OF A RELATIVE POSITION	PC113420 2400 <dec>	
	ET=+ UT=+00.00.03	DMC_MOVE_GRAT_REL_RAW DMC_MOVE_GRAT_REL Command Parameter(s) : SET_POINT_INCREMENT PP078420 Subsch. ID : 90 Det. descr. : MOVE GRATING OF A RELATIVE POSITION	PC113420 2400 <dec>	
	ET=+ UT=+00.00.03	DMC_SET_BBID DMC_SET_BBID Command Parameter(s) : BUILDING_BLOCK_ID PP070420 Subsch. ID : 90 Det. descr. : SET BBID IN DMC	PC079420 1080557591 <dec>	
	ET=+ UT=+00.00.01	DMC_MOVE_GRAT_REL_RAW DMC_MOVE_GRAT_REL Command Parameter(s) : SET_POINT_INCREMENT PP078420 Subsch. ID : 90 Det. descr. : MOVE GRATING OF A RELATIVE POSITION	PC113420 5825 <dec>	
	ET=+ UT=+00.00.03	DMC_MOVE_GRAT_REL_RAW DMC_MOVE_GRAT_REL Command Parameter(s) : SET_POINT_INCREMENT PP078420 Subsch. ID : 90 Det. descr. : MOVE GRATING OF A RELATIVE POSITION	PC113420 5825 <dec>	
	ET=+ UT=+00.00.03	DMC_MOVE_GRAT_REL_RAW DMC_MOVE_GRAT_REL Command Parameter(s) : SET_POINT_INCREMENT PP078420 Subsch. ID : 90 Det. descr. : MOVE GRATING OF A RELATIVE POSITION	PC113420 5825 <dec>	

PACS_Spec_Gra_IST_Full_Charac_OBS
 File: H_COP_PAC_X012.xls
 Author: R. Biggins



Step No.	Time	Activity/Remarks	TC/TLM	Display/ Branch
	ET=+ UT=+00.00.03	DMC_SET_BBID DMC_SET_BBID Command Parameter(s) : BUILDING_BLOCK_ID PP070420 Subsch. ID : 90 Det. descr. : SET BBID IN DMC	PC079420 1080557592 <dec>	
	ET=+ UT=+00.00.01	DMC_MOVE_GRAT_REL_RAW DMC_MOVE_GRAT_REL Command Parameter(s) : SET_POINT_INCREMENT PP078420 Subsch. ID : 90 Det. descr. : MOVE GRATING OF A RELATIVE POSITION	PC113420 11650 <dec>	
	ET=+ UT=+00.00.03	DMC_MOVE_GRAT_REL_RAW DMC_MOVE_GRAT_REL Command Parameter(s) : SET_POINT_INCREMENT PP078420 Subsch. ID : 90 Det. descr. : MOVE GRATING OF A RELATIVE POSITION	PC113420 11650 <dec>	
	ET=+ UT=+00.00.03	DMC_MOVE_GRAT_REL_RAW DMC_MOVE_GRAT_REL Command Parameter(s) : SET_POINT_INCREMENT PP078420 Subsch. ID : 90 Det. descr. : MOVE GRATING OF A RELATIVE POSITION	PC113420 11650 <dec>	
	ET=+ UT=+00.00.03	DMC_SET_BBID DMC_SET_BBID Command Parameter(s) : BUILDING_BLOCK_ID PP070420 Subsch. ID : 90 Det. descr. : SET BBID IN DMC	PC079420 1080557593 <dec>	
	ET=+ UT=+00.00.01	DMC_MOVE_GRAT_REL_RAW DMC_MOVE_GRAT_REL Command Parameter(s) : SET_POINT_INCREMENT PP078420 Subsch. ID : 90 Det. descr. : MOVE GRATING OF A RELATIVE POSITION	PC113420 23301 <dec>	

PACS_Spec_Gra_IST_Full_Charac_OBS
 File: H_COP_PAC_X012.xls
 Author: R. Biggins



Step No.	Time	Activity/Remarks	TC/TLM	Display/ Branch
	ET=+ UT=+00.00.03	DMC_MOVE_GRAT_REL_RAW DMC_MOVE_GRAT_REL Command Parameter(s) : SET_POINT_INCREMENT PP078420 Subsch. ID : 90 Det. descr. : MOVE GRATING OF A RELATIVE POSITION	PC113420 23301 <dec>	
	ET=+ UT=+00.00.03	DMC_MOVE_GRAT_REL_RAW DMC_MOVE_GRAT_REL Command Parameter(s) : SET_POINT_INCREMENT PP078420 Subsch. ID : 90 Det. descr. : MOVE GRATING OF A RELATIVE POSITION	PC113420 23301 <dec>	
	ET=+ UT=+00.00.03	DMC_SET_BBID DMC_SET_BBID Command Parameter(s) : BUILDING_BLOCK_ID PP070420 Subsch. ID : 90 Det. descr. : SET BBID IN DMC	PC079420 1080557594 <dec>	
	ET=+ UT=+00.00.01	DMC_MOVE_GRAT_REL_RAW DMC_MOVE_GRAT_REL Command Parameter(s) : SET_POINT_INCREMENT PP078420 Subsch. ID : 90 Det. descr. : MOVE GRATING OF A RELATIVE POSITION	PC113420 69903 <dec>	
	ET=+ UT=+00.00.05	DMC_MOVE_GRAT_REL_RAW DMC_MOVE_GRAT_REL Command Parameter(s) : SET_POINT_INCREMENT PP078420 Subsch. ID : 90 Det. descr. : MOVE GRATING OF A RELATIVE POSITION	PC113420 69903 <dec>	
	ET=+ UT=+00.00.05	DMC_MOVE_GRAT_REL_RAW DMC_MOVE_GRAT_REL Command Parameter(s) : SET_POINT_INCREMENT PP078420 Subsch. ID : 90 Det. descr. : MOVE GRATING OF A RELATIVE POSITION	PC113420 69903 <dec>	
11.3		Block 3 (top downwards)		<input type="checkbox"/>

PACS_Spec_Gra_IST_Full_Charac_OBS
 File: H_COP_PAC_X012.xls
 Author: R. Biggins



Step No.	Time	Activity/Remarks	TC/TLM	Display/ Branch
	ET=+ UT=+00.00.05	DMC_SET_BBID DMC_SET_BBID Command Parameter(s) : BUILDING_BLOCK_ID PP070420 Subsch. ID : 90 Det. descr. : SET BBID IN DMC	PC079420 1080492036 <dec>	
	ET=+ UT=+00.00.01	DMC_MOVE_GRAT_ABS_RAW DMC_MOVE_GRAT_ABS Command Parameter(s) : SET_POINT PP079420 Subsch. ID : 90 Det. descr. : MOVE GRATING TO AN ABSOLUTE POSITION	PC112420 1030000 <dec>	
	ET=+ UT=+00.00.25	DMC_SET_BBID DMC_SET_BBID Command Parameter(s) : BUILDING_BLOCK_ID PP070420 Subsch. ID : 90 Det. descr. : SET BBID IN DMC	PC079420 1080557595 <dec>	
	ET=+ UT=+00.00.01	DMC_MOVE_GRAT_REL_RAW DMC_MOVE_GRAT_REL Command Parameter(s) : SET_POINT_INCREMENT PP078420 Subsch. ID : 90 Det. descr. : MOVE GRATING OF A RELATIVE POSITION	PC113420 -117 <dec>	
	ET=+ UT=+00.00.03	DMC_MOVE_GRAT_REL_RAW DMC_MOVE_GRAT_REL Command Parameter(s) : SET_POINT_INCREMENT PP078420 Subsch. ID : 90 Det. descr. : MOVE GRATING OF A RELATIVE POSITION	PC113420 -117 <dec>	
	ET=+ UT=+00.00.03	DMC_MOVE_GRAT_REL_RAW DMC_MOVE_GRAT_REL Command Parameter(s) : SET_POINT_INCREMENT PP078420 Subsch. ID : 90 Det. descr. : MOVE GRATING OF A RELATIVE POSITION	PC113420 -117 <dec>	

PACS_Spec_Gra_IST_Full_Charac_OBS
 File: H_COP_PAC_X012.xls
 Author: R. Biggins



Step No.	Time	Activity/Remarks	TC/TLM	Display/ Branch
	ET=+ UT=+00.00.03	DMC_SET_BBID Command Parameter(s) : BUILDING_BLOCK_ID PP070420 Subsch. ID : 90 Det. descr. : SET BBID IN DMC	PC079420 1080557596 <dec>	
	ET=+ UT=+00.00.01	DMC_MOVE_GRAT_REL_RAW Command Parameter(s) : SET_POINT_INCREMENT PP078420 Subsch. ID : 90 Det. descr. : MOVE GRATING OF A RELATIVE POSITION	PC113420 -233 <dec>	
	ET=+ UT=+00.00.03	DMC_MOVE_GRAT_REL_RAW Command Parameter(s) : SET_POINT_INCREMENT PP078420 Subsch. ID : 90 Det. descr. : MOVE GRATING OF A RELATIVE POSITION	PC113420 -233 <dec>	
	ET=+ UT=+00.00.03	DMC_MOVE_GRAT_REL_RAW Command Parameter(s) : SET_POINT_INCREMENT PP078420 Subsch. ID : 90 Det. descr. : MOVE GRATING OF A RELATIVE POSITION	PC113420 -233 <dec>	
	ET=+ UT=+00.00.03	DMC_SET_BBID Command Parameter(s) : BUILDING_BLOCK_ID PP070420 Subsch. ID : 90 Det. descr. : SET BBID IN DMC	PC079420 1080557597 <dec>	
	ET=+ UT=+00.00.01	DMC_MOVE_GRAT_REL_RAW Command Parameter(s) : SET_POINT_INCREMENT PP078420 Subsch. ID : 90 Det. descr. : MOVE GRATING OF A RELATIVE POSITION	PC113420 -350 <dec>	

PACS_Spec_Gra_IST_Full_Charac_OBS
 File: H_COP_PAC_X012.xls
 Author: R. Biggins



Step No.	Time	Activity/Remarks	TC/TLM	Display/ Branch
	ET=+ UT=+00.00.03	DMC_MOVE_GRAT_REL_RAW DMC_MOVE_GRAT_REL Command Parameter(s) : SET_POINT_INCREMENT PP078420 Subsch. ID : 90 Det. descr. : MOVE GRATING OF A RELATIVE POSITION	PC113420 -350 <dec>	
	ET=+ UT=+00.00.03	DMC_MOVE_GRAT_REL_RAW DMC_MOVE_GRAT_REL Command Parameter(s) : SET_POINT_INCREMENT PP078420 Subsch. ID : 90 Det. descr. : MOVE GRATING OF A RELATIVE POSITION	PC113420 -350 <dec>	
	ET=+ UT=+00.00.03	DMC_SET_BBID DMC_SET_BBID Command Parameter(s) : BUILDING_BLOCK_ID PP070420 Subsch. ID : 90 Det. descr. : SET BBID IN DMC	PC079420 1080557598 <dec>	
	ET=+ UT=+00.00.01	DMC_MOVE_GRAT_REL_RAW DMC_MOVE_GRAT_REL Command Parameter(s) : SET_POINT_INCREMENT PP078420 Subsch. ID : 90 Det. descr. : MOVE GRATING OF A RELATIVE POSITION	PC113420 -400 <dec>	
	ET=+ UT=+00.00.03	DMC_MOVE_GRAT_REL_RAW DMC_MOVE_GRAT_REL Command Parameter(s) : SET_POINT_INCREMENT PP078420 Subsch. ID : 90 Det. descr. : MOVE GRATING OF A RELATIVE POSITION	PC113420 -400 <dec>	
	ET=+ UT=+00.00.03	DMC_MOVE_GRAT_REL_RAW DMC_MOVE_GRAT_REL Command Parameter(s) : SET_POINT_INCREMENT PP078420 Subsch. ID : 90 Det. descr. : MOVE GRATING OF A RELATIVE POSITION	PC113420 -400 <dec>	

PACS_Spec_Gra_IST_Full_Charac_OBS
 File: H_COP_PAC_X012.xls
 Author: R. Biggins



Step No.	Time	Activity/Remarks	TC/TLM	Display/ Branch
	ET=+ UT=+00.00.03	DMC_SET_BBID DMC_SET_BBID Command Parameter(s) : BUILDING_BLOCK_ID PP070420 Subsch. ID : 90 Det. descr. : SET BBID IN DMC	PC079420 1080557599 <dec>	
	ET=+ UT=+00.00.01	DMC_MOVE_GRAT_REL_RAW DMC_MOVE_GRAT_REL Command Parameter(s) : SET_POINT_INCREMENT PP078420 Subsch. ID : 90 Det. descr. : MOVE GRATING OF A RELATIVE POSITION	PC113420 -600 <dec>	
	ET=+ UT=+00.00.03	DMC_MOVE_GRAT_REL_RAW DMC_MOVE_GRAT_REL Command Parameter(s) : SET_POINT_INCREMENT PP078420 Subsch. ID : 90 Det. descr. : MOVE GRATING OF A RELATIVE POSITION	PC113420 -600 <dec>	
	ET=+ UT=+00.00.03	DMC_MOVE_GRAT_REL_RAW DMC_MOVE_GRAT_REL Command Parameter(s) : SET_POINT_INCREMENT PP078420 Subsch. ID : 90 Det. descr. : MOVE GRATING OF A RELATIVE POSITION	PC113420 -600 <dec>	
	ET=+ UT=+00.00.03	DMC_SET_BBID DMC_SET_BBID Command Parameter(s) : BUILDING_BLOCK_ID PP070420 Subsch. ID : 90 Det. descr. : SET BBID IN DMC	PC079420 1080557600 <dec>	
	ET=+ UT=+00.00.01	DMC_MOVE_GRAT_REL_RAW DMC_MOVE_GRAT_REL Command Parameter(s) : SET_POINT_INCREMENT PP078420 Subsch. ID : 90 Det. descr. : MOVE GRATING OF A RELATIVE POSITION	PC113420 -900 <dec>	

PACS_Spec_Gra_IST_Full_Charac_OBS
 File: H_COP_PAC_X012.xls
 Author: R. Biggins



Step No.	Time	Activity/Remarks	TC/TLM	Display/ Branch
	ET=+ UT=+00.00.03	DMC_MOVE_GRAT_REL_RAW DMC_MOVE_GRAT_REL Command Parameter(s) : SET_POINT_INCREMENT PP078420 Subsch. ID : 90 Det. descr. : MOVE GRATING OF A RELATIVE POSITION	PC113420 -900 <dec>	
	ET=+ UT=+00.00.03	DMC_MOVE_GRAT_REL_RAW DMC_MOVE_GRAT_REL Command Parameter(s) : SET_POINT_INCREMENT PP078420 Subsch. ID : 90 Det. descr. : MOVE GRATING OF A RELATIVE POSITION	PC113420 -900 <dec>	
	ET=+ UT=+00.00.03	DMC_SET_BBID DMC_SET_BBID Command Parameter(s) : BUILDING_BLOCK_ID PP070420 Subsch. ID : 90 Det. descr. : SET BBID IN DMC	PC079420 1080557601 <dec>	
	ET=+ UT=+00.00.01	DMC_MOVE_GRAT_REL_RAW DMC_MOVE_GRAT_REL Command Parameter(s) : SET_POINT_INCREMENT PP078420 Subsch. ID : 90 Det. descr. : MOVE GRATING OF A RELATIVE POSITION	PC113420 -1200 <dec>	
	ET=+ UT=+00.00.03	DMC_MOVE_GRAT_REL_RAW DMC_MOVE_GRAT_REL Command Parameter(s) : SET_POINT_INCREMENT PP078420 Subsch. ID : 90 Det. descr. : MOVE GRATING OF A RELATIVE POSITION	PC113420 -1200 <dec>	
	ET=+ UT=+00.00.03	DMC_MOVE_GRAT_REL_RAW DMC_MOVE_GRAT_REL Command Parameter(s) : SET_POINT_INCREMENT PP078420 Subsch. ID : 90 Det. descr. : MOVE GRATING OF A RELATIVE POSITION	PC113420 -1200 <dec>	

PACS_Spec_Gra_IST_Full_Charac_OBS
 File: H_COP_PAC_X012.xls
 Author: R. Biggins



Step No.	Time	Activity/Remarks	TC/TLM	Display/ Branch
	ET=+ UT=+00.00.03	DMC_SET_BBID DMC_SET_BBID Command Parameter(s) : BUILDING_BLOCK_ID PP070420 Subsch. ID : 90 Det. descr. : SET BBID IN DMC	PC079420 1080557602 <dec>	
	ET=+ UT=+00.00.01	DMC_MOVE_GRAT_REL_RAW DMC_MOVE_GRAT_REL Command Parameter(s) : SET_POINT_INCREMENT PP078420 Subsch. ID : 90 Det. descr. : MOVE GRATING OF A RELATIVE POSITION	PC113420 -1748 <dec>	
	ET=+ UT=+00.00.03	DMC_MOVE_GRAT_REL_RAW DMC_MOVE_GRAT_REL Command Parameter(s) : SET_POINT_INCREMENT PP078420 Subsch. ID : 90 Det. descr. : MOVE GRATING OF A RELATIVE POSITION	PC113420 -1748 <dec>	
	ET=+ UT=+00.00.03	DMC_MOVE_GRAT_REL_RAW DMC_MOVE_GRAT_REL Command Parameter(s) : SET_POINT_INCREMENT PP078420 Subsch. ID : 90 Det. descr. : MOVE GRATING OF A RELATIVE POSITION	PC113420 -1748 <dec>	
	ET=+ UT=+00.00.03	DMC_SET_BBID DMC_SET_BBID Command Parameter(s) : BUILDING_BLOCK_ID PP070420 Subsch. ID : 90 Det. descr. : SET BBID IN DMC	PC079420 1080557603 <dec>	
	ET=+ UT=+00.00.01	DMC_MOVE_GRAT_REL_RAW DMC_MOVE_GRAT_REL Command Parameter(s) : SET_POINT_INCREMENT PP078420 Subsch. ID : 90 Det. descr. : MOVE GRATING OF A RELATIVE POSITION	PC113420 -2400 <dec>	

PACS_Spec_Gra_IST_Full_Charac_OBS
 File: H_COP_PAC_X012.xls
 Author: R. Biggins



Step No.	Time	Activity/Remarks	TC/TLM	Display/ Branch
	ET=+ UT=+00.00.03	DMC_MOVE_GRAT_REL_RAW DMC_MOVE_GRAT_REL Command Parameter(s) : SET_POINT_INCREMENT PP078420 Subsch. ID : 90 Det. descr. : MOVE GRATING OF A RELATIVE POSITION	PC113420 -2400 <dec>	
	ET=+ UT=+00.00.03	DMC_MOVE_GRAT_REL_RAW DMC_MOVE_GRAT_REL Command Parameter(s) : SET_POINT_INCREMENT PP078420 Subsch. ID : 90 Det. descr. : MOVE GRATING OF A RELATIVE POSITION	PC113420 -2400 <dec>	
	ET=+ UT=+00.00.03	DMC_SET_BBID DMC_SET_BBID Command Parameter(s) : BUILDING_BLOCK_ID PP070420 Subsch. ID : 90 Det. descr. : SET BBID IN DMC	PC079420 1080557604 <dec>	
	ET=+ UT=+00.00.01	DMC_MOVE_GRAT_REL_RAW DMC_MOVE_GRAT_REL Command Parameter(s) : SET_POINT_INCREMENT PP078420 Subsch. ID : 90 Det. descr. : MOVE GRATING OF A RELATIVE POSITION	PC113420 -5825 <dec>	
	ET=+ UT=+00.00.03	DMC_MOVE_GRAT_REL_RAW DMC_MOVE_GRAT_REL Command Parameter(s) : SET_POINT_INCREMENT PP078420 Subsch. ID : 90 Det. descr. : MOVE GRATING OF A RELATIVE POSITION	PC113420 -5825 <dec>	
	ET=+ UT=+00.00.03	DMC_MOVE_GRAT_REL_RAW DMC_MOVE_GRAT_REL Command Parameter(s) : SET_POINT_INCREMENT PP078420 Subsch. ID : 90 Det. descr. : MOVE GRATING OF A RELATIVE POSITION	PC113420 -5825 <dec>	

PACS_Spec_Gra_IST_Full_Charac_OBS
 File: H_COP_PAC_X012.xls
 Author: R. Biggins



Step No.	Time	Activity/Remarks	TC/TLM	Display/ Branch
	ET=+ UT=+00.00.03	DMC_SET_BBID DMC_SET_BBID Command Parameter(s) : BUILDING_BLOCK_ID PP070420 Subsch. ID : 90 Det. descr. : SET BBID IN DMC	PC079420 1080557605 <dec>	
	ET=+ UT=+00.00.01	DMC_MOVE_GRAT_REL_RAW DMC_MOVE_GRAT_REL Command Parameter(s) : SET_POINT_INCREMENT PP078420 Subsch. ID : 90 Det. descr. : MOVE GRATING OF A RELATIVE POSITION	PC113420 -11650 <dec>	
	ET=+ UT=+00.00.03	DMC_MOVE_GRAT_REL_RAW DMC_MOVE_GRAT_REL Command Parameter(s) : SET_POINT_INCREMENT PP078420 Subsch. ID : 90 Det. descr. : MOVE GRATING OF A RELATIVE POSITION	PC113420 -11650 <dec>	
	ET=+ UT=+00.00.03	DMC_MOVE_GRAT_REL_RAW DMC_MOVE_GRAT_REL Command Parameter(s) : SET_POINT_INCREMENT PP078420 Subsch. ID : 90 Det. descr. : MOVE GRATING OF A RELATIVE POSITION	PC113420 -11650 <dec>	
	ET=+ UT=+00.00.03	DMC_SET_BBID DMC_SET_BBID Command Parameter(s) : BUILDING_BLOCK_ID PP070420 Subsch. ID : 90 Det. descr. : SET BBID IN DMC	PC079420 1080557606 <dec>	
	ET=+ UT=+00.00.01	DMC_MOVE_GRAT_REL_RAW DMC_MOVE_GRAT_REL Command Parameter(s) : SET_POINT_INCREMENT PP078420 Subsch. ID : 90 Det. descr. : MOVE GRATING OF A RELATIVE POSITION	PC113420 -23301 <dec>	

PACS_Spec_Gra_IST_Full_Charac_OBS
 File: H_COP_PAC_X012.xls
 Author: R. Biggins



Step No.	Time	Activity/Remarks	TC/TLM	Display/ Branch
	ET=+ UT=+00.00.03	DMC_MOVE_GRAT_REL_RAW DMC_MOVE_GRAT_REL Command Parameter(s) : SET_POINT_INCREMENT PP078420 Subsch. ID : 90 Det. descr. : MOVE GRATING OF A RELATIVE POSITION	PC113420 -23301 <dec>	
	ET=+ UT=+00.00.03	DMC_MOVE_GRAT_REL_RAW DMC_MOVE_GRAT_REL Command Parameter(s) : SET_POINT_INCREMENT PP078420 Subsch. ID : 90 Det. descr. : MOVE GRATING OF A RELATIVE POSITION	PC113420 -23301 <dec>	
	ET=+ UT=+00.00.03	DMC_SET_BBID DMC_SET_BBID Command Parameter(s) : BUILDING_BLOCK_ID PP070420 Subsch. ID : 90 Det. descr. : SET BBID IN DMC	PC079420 1080557607 <dec>	
	ET=+ UT=+00.00.01	DMC_MOVE_GRAT_REL_RAW DMC_MOVE_GRAT_REL Command Parameter(s) : SET_POINT_INCREMENT PP078420 Subsch. ID : 90 Det. descr. : MOVE GRATING OF A RELATIVE POSITION	PC113420 -69903 <dec>	
	ET=+ UT=+00.00.05	DMC_MOVE_GRAT_REL_RAW DMC_MOVE_GRAT_REL Command Parameter(s) : SET_POINT_INCREMENT PP078420 Subsch. ID : 90 Det. descr. : MOVE GRATING OF A RELATIVE POSITION	PC113420 -69903 <dec>	
	ET=+ UT=+00.00.05	DMC_MOVE_GRAT_REL_RAW DMC_MOVE_GRAT_REL Command Parameter(s) : SET_POINT_INCREMENT PP078420 Subsch. ID : 90 Det. descr. : MOVE GRATING OF A RELATIVE POSITION	PC113420 -69903 <dec>	
11.4		Block 4 (center downwards)		<input type="checkbox"/>

PACS_Spec_Gra_IST_Full_Charac_OBS
 File: H_COP_PAC_X012.xls
 Author: R. Biggins



Step No.	Time	Activity/Remarks	TC/TLM	Display/ Branch
	ET=+ UT=+00.00.05	DMC_SET_BBID Command Parameter(s) : BUILDING_BLOCK_ID PP070420 Subsch. ID : 90 Det. descr. : SET BBID IN DMC	PC079420 1080492037 <dec>	
	ET=+ UT=+00.00.01	DMC_MOVE_GRAT_ABS_RAW Command Parameter(s) : SET_POINT PP079420 Subsch. ID : 90 Det. descr. : MOVE GRATING TO AN ABSOLUTE POSITION	PC112420 500000 <dec>	
	ET=+ UT=+00.00.25	DMC_SET_BBID Command Parameter(s) : BUILDING_BLOCK_ID PP070420 Subsch. ID : 90 Det. descr. : SET BBID IN DMC	PC079420 1080557608 <dec>	
	ET=+ UT=+00.00.01	DMC_MOVE_GRAT_REL_RAW Command Parameter(s) : SET_POINT_INCREMENT PP078420 Subsch. ID : 90 Det. descr. : MOVE GRATING OF A RELATIVE POSITION	PC113420 -117 <dec>	
	ET=+ UT=+00.00.03	DMC_MOVE_GRAT_REL_RAW Command Parameter(s) : SET_POINT_INCREMENT PP078420 Subsch. ID : 90 Det. descr. : MOVE GRATING OF A RELATIVE POSITION	PC113420 -117 <dec>	
	ET=+ UT=+00.00.03	DMC_MOVE_GRAT_REL_RAW Command Parameter(s) : SET_POINT_INCREMENT PP078420 Subsch. ID : 90 Det. descr. : MOVE GRATING OF A RELATIVE POSITION	PC113420 -117 <dec>	

PACS_Spec_Gra_IST_Full_Charac_OBS
 File: H_COP_PAC_X012.xls
 Author: R. Biggins



Step No.	Time	Activity/Remarks	TC/TLM	Display/ Branch
	ET=+ UT=+00.00.03	DMC_SET_BBID DMC_SET_BBID Command Parameter(s) : BUILDING_BLOCK_ID PP070420 Subsch. ID : 90 Det. descr. : SET BBID IN DMC	PC079420 1080557609 <dec>	
	ET=+ UT=+00.00.01	DMC_MOVE_GRAT_REL_RAW DMC_MOVE_GRAT_REL Command Parameter(s) : SET_POINT_INCREMENT PP078420 Subsch. ID : 90 Det. descr. : MOVE GRATING OF A RELATIVE POSITION	PC113420 -233 <dec>	
	ET=+ UT=+00.00.03	DMC_MOVE_GRAT_REL_RAW DMC_MOVE_GRAT_REL Command Parameter(s) : SET_POINT_INCREMENT PP078420 Subsch. ID : 90 Det. descr. : MOVE GRATING OF A RELATIVE POSITION	PC113420 -233 <dec>	
	ET=+ UT=+00.00.03	DMC_MOVE_GRAT_REL_RAW DMC_MOVE_GRAT_REL Command Parameter(s) : SET_POINT_INCREMENT PP078420 Subsch. ID : 90 Det. descr. : MOVE GRATING OF A RELATIVE POSITION	PC113420 -233 <dec>	
	ET=+ UT=+00.00.03	DMC_SET_BBID DMC_SET_BBID Command Parameter(s) : BUILDING_BLOCK_ID PP070420 Subsch. ID : 90 Det. descr. : SET BBID IN DMC	PC079420 1080557610 <dec>	
	ET=+ UT=+00.00.01	DMC_MOVE_GRAT_REL_RAW DMC_MOVE_GRAT_REL Command Parameter(s) : SET_POINT_INCREMENT PP078420 Subsch. ID : 90 Det. descr. : MOVE GRATING OF A RELATIVE POSITION	PC113420 -350 <dec>	

PACS_Spec_Gra_IST_Full_Charac_OBS
 File: H_COP_PAC_X012.xls
 Author: R. Biggins



Step No.	Time	Activity/Remarks	TC/TLM	Display/ Branch
	ET=+ UT=+00.00.03	DMC_MOVE_GRAT_REL_RAW DMC_MOVE_GRAT_REL Command Parameter(s) : SET_POINT_INCREMENT PP078420 Subsch. ID : 90 Det. descr. : MOVE GRATING OF A RELATIVE POSITION	PC113420 -350 <dec>	
	ET=+ UT=+00.00.03	DMC_MOVE_GRAT_REL_RAW DMC_MOVE_GRAT_REL Command Parameter(s) : SET_POINT_INCREMENT PP078420 Subsch. ID : 90 Det. descr. : MOVE GRATING OF A RELATIVE POSITION	PC113420 -350 <dec>	
	ET=+ UT=+00.00.03	DMC_SET_BBID DMC_SET_BBID Command Parameter(s) : BUILDING_BLOCK_ID PP070420 Subsch. ID : 90 Det. descr. : SET BBID IN DMC	PC079420 1080557611 <dec>	
	ET=+ UT=+00.00.01	DMC_MOVE_GRAT_REL_RAW DMC_MOVE_GRAT_REL Command Parameter(s) : SET_POINT_INCREMENT PP078420 Subsch. ID : 90 Det. descr. : MOVE GRATING OF A RELATIVE POSITION	PC113420 -400 <dec>	
	ET=+ UT=+00.00.03	DMC_MOVE_GRAT_REL_RAW DMC_MOVE_GRAT_REL Command Parameter(s) : SET_POINT_INCREMENT PP078420 Subsch. ID : 90 Det. descr. : MOVE GRATING OF A RELATIVE POSITION	PC113420 -400 <dec>	
	ET=+ UT=+00.00.03	DMC_MOVE_GRAT_REL_RAW DMC_MOVE_GRAT_REL Command Parameter(s) : SET_POINT_INCREMENT PP078420 Subsch. ID : 90 Det. descr. : MOVE GRATING OF A RELATIVE POSITION	PC113420 -400 <dec>	

PACS_Spec_Gra_IST_Full_Charac_OBS
 File: H_COP_PAC_X012.xls
 Author: R. Biggins



Step No.	Time	Activity/Remarks	TC/TLM	Display/ Branch
	ET=+ UT=+00.00.03	DMC_SET_BBID Command Parameter(s) : BUILDING_BLOCK_ID PP070420 Subsch. ID : 90 Det. descr. : SET BBID IN DMC	PC079420 1080557612 <dec>	
	ET=+ UT=+00.00.01	DMC_MOVE_GRAT_REL_RAW Command Parameter(s) : SET_POINT_INCREMENT PP078420 Subsch. ID : 90 Det. descr. : MOVE GRATING OF A RELATIVE POSITION	PC113420 -600 <dec>	
	ET=+ UT=+00.00.03	DMC_MOVE_GRAT_REL_RAW Command Parameter(s) : SET_POINT_INCREMENT PP078420 Subsch. ID : 90 Det. descr. : MOVE GRATING OF A RELATIVE POSITION	PC113420 -600 <dec>	
	ET=+ UT=+00.00.03	DMC_MOVE_GRAT_REL_RAW Command Parameter(s) : SET_POINT_INCREMENT PP078420 Subsch. ID : 90 Det. descr. : MOVE GRATING OF A RELATIVE POSITION	PC113420 -600 <dec>	
	ET=+ UT=+00.00.03	DMC_SET_BBID Command Parameter(s) : BUILDING_BLOCK_ID PP070420 Subsch. ID : 90 Det. descr. : SET BBID IN DMC	PC079420 1080557613 <dec>	
	ET=+ UT=+00.00.01	DMC_MOVE_GRAT_REL_RAW Command Parameter(s) : SET_POINT_INCREMENT PP078420 Subsch. ID : 90 Det. descr. : MOVE GRATING OF A RELATIVE POSITION	PC113420 -900 <dec>	

PACS_Spec_Gra_IST_Full_Charac_OBS
 File: H_COP_PAC_X012.xls
 Author: R. Biggins



Step No.	Time	Activity/Remarks	TC/TLM	Display/ Branch
	ET=+ UT=+00.00.03	DMC_MOVE_GRAT_REL_RAW DMC_MOVE_GRAT_REL Command Parameter(s) : SET_POINT_INCREMENT PP078420 Subsch. ID : 90 Det. descr. : MOVE GRATING OF A RELATIVE POSITION	PC113420 -900 <dec>	
	ET=+ UT=+00.00.03	DMC_MOVE_GRAT_REL_RAW DMC_MOVE_GRAT_REL Command Parameter(s) : SET_POINT_INCREMENT PP078420 Subsch. ID : 90 Det. descr. : MOVE GRATING OF A RELATIVE POSITION	PC113420 -900 <dec>	
	ET=+ UT=+00.00.03	DMC_SET_BBID DMC_SET_BBID Command Parameter(s) : BUILDING_BLOCK_ID PP070420 Subsch. ID : 90 Det. descr. : SET BBID IN DMC	PC079420 1080557614 <dec>	
	ET=+ UT=+00.00.01	DMC_MOVE_GRAT_REL_RAW DMC_MOVE_GRAT_REL Command Parameter(s) : SET_POINT_INCREMENT PP078420 Subsch. ID : 90 Det. descr. : MOVE GRATING OF A RELATIVE POSITION	PC113420 -1200 <dec>	
	ET=+ UT=+00.00.03	DMC_MOVE_GRAT_REL_RAW DMC_MOVE_GRAT_REL Command Parameter(s) : SET_POINT_INCREMENT PP078420 Subsch. ID : 90 Det. descr. : MOVE GRATING OF A RELATIVE POSITION	PC113420 -1200 <dec>	
	ET=+ UT=+00.00.03	DMC_MOVE_GRAT_REL_RAW DMC_MOVE_GRAT_REL Command Parameter(s) : SET_POINT_INCREMENT PP078420 Subsch. ID : 90 Det. descr. : MOVE GRATING OF A RELATIVE POSITION	PC113420 -1200 <dec>	

PACS_Spec_Gra_IST_Full_Charac_OBS
 File: H_COP_PAC_X012.xls
 Author: R. Biggins



Step No.	Time	Activity/Remarks	TC/TLM	Display/ Branch
	ET=+ UT=+00.00.03	DMC_SET_BBID DMC_SET_BBID Command Parameter(s) : BUILDING_BLOCK_ID PP070420 Subsch. ID : 90 Det. descr. : SET BBID IN DMC	PC079420 1080557615 <dec>	
	ET=+ UT=+00.00.01	DMC_MOVE_GRAT_REL_RAW DMC_MOVE_GRAT_REL Command Parameter(s) : SET_POINT_INCREMENT PP078420 Subsch. ID : 90 Det. descr. : MOVE GRATING OF A RELATIVE POSITION	PC113420 -1748 <dec>	
	ET=+ UT=+00.00.03	DMC_MOVE_GRAT_REL_RAW DMC_MOVE_GRAT_REL Command Parameter(s) : SET_POINT_INCREMENT PP078420 Subsch. ID : 90 Det. descr. : MOVE GRATING OF A RELATIVE POSITION	PC113420 -1748 <dec>	
	ET=+ UT=+00.00.03	DMC_MOVE_GRAT_REL_RAW DMC_MOVE_GRAT_REL Command Parameter(s) : SET_POINT_INCREMENT PP078420 Subsch. ID : 90 Det. descr. : MOVE GRATING OF A RELATIVE POSITION	PC113420 -1748 <dec>	
	ET=+ UT=+00.00.03	DMC_SET_BBID DMC_SET_BBID Command Parameter(s) : BUILDING_BLOCK_ID PP070420 Subsch. ID : 90 Det. descr. : SET BBID IN DMC	PC079420 1080557616 <dec>	
	ET=+ UT=+00.00.01	DMC_MOVE_GRAT_REL_RAW DMC_MOVE_GRAT_REL Command Parameter(s) : SET_POINT_INCREMENT PP078420 Subsch. ID : 90 Det. descr. : MOVE GRATING OF A RELATIVE POSITION	PC113420 -2400 <dec>	

PACS_Spec_Gra_IST_Full_Charac_OBS
 File: H_COP_PAC_X012.xls
 Author: R. Biggins



Step No.	Time	Activity/Remarks	TC/TLM	Display/ Branch
	ET=+ UT=+00.00.03	DMC_MOVE_GRAT_REL_RAW DMC_MOVE_GRAT_REL Command Parameter(s) : SET_POINT_INCREMENT PP078420 Subsch. ID : 90 Det. descr. : MOVE GRATING OF A RELATIVE POSITION	PC113420 -2400 <dec>	
	ET=+ UT=+00.00.03	DMC_MOVE_GRAT_REL_RAW DMC_MOVE_GRAT_REL Command Parameter(s) : SET_POINT_INCREMENT PP078420 Subsch. ID : 90 Det. descr. : MOVE GRATING OF A RELATIVE POSITION	PC113420 -2400 <dec>	
	ET=+ UT=+00.00.03	DMC_SET_BBID DMC_SET_BBID Command Parameter(s) : BUILDING_BLOCK_ID PP070420 Subsch. ID : 90 Det. descr. : SET BBID IN DMC	PC079420 1080557617 <dec>	
	ET=+ UT=+00.00.01	DMC_MOVE_GRAT_REL_RAW DMC_MOVE_GRAT_REL Command Parameter(s) : SET_POINT_INCREMENT PP078420 Subsch. ID : 90 Det. descr. : MOVE GRATING OF A RELATIVE POSITION	PC113420 -5825 <dec>	
	ET=+ UT=+00.00.03	DMC_MOVE_GRAT_REL_RAW DMC_MOVE_GRAT_REL Command Parameter(s) : SET_POINT_INCREMENT PP078420 Subsch. ID : 90 Det. descr. : MOVE GRATING OF A RELATIVE POSITION	PC113420 -5825 <dec>	
	ET=+ UT=+00.00.03	DMC_MOVE_GRAT_REL_RAW DMC_MOVE_GRAT_REL Command Parameter(s) : SET_POINT_INCREMENT PP078420 Subsch. ID : 90 Det. descr. : MOVE GRATING OF A RELATIVE POSITION	PC113420 -5825 <dec>	

PACS_Spec_Gra_IST_Full_Charac_OBS
 File: H_COP_PAC_X012.xls
 Author: R. Biggins



Step No.	Time	Activity/Remarks	TC/TLM	Display/ Branch
	ET=+ UT=+00.00.03	DMC_SET_BBID DMC_SET_BBID Command Parameter(s) : BUILDING_BLOCK_ID PP070420 Subsch. ID : 90 Det. descr. : SET BBID IN DMC	PC079420 1080557618 <dec>	
	ET=+ UT=+00.00.01	DMC_MOVE_GRAT_REL_RAW DMC_MOVE_GRAT_REL Command Parameter(s) : SET_POINT_INCREMENT PP078420 Subsch. ID : 90 Det. descr. : MOVE GRATING OF A RELATIVE POSITION	PC113420 -11650 <dec>	
	ET=+ UT=+00.00.03	DMC_MOVE_GRAT_REL_RAW DMC_MOVE_GRAT_REL Command Parameter(s) : SET_POINT_INCREMENT PP078420 Subsch. ID : 90 Det. descr. : MOVE GRATING OF A RELATIVE POSITION	PC113420 -11650 <dec>	
	ET=+ UT=+00.00.03	DMC_MOVE_GRAT_REL_RAW DMC_MOVE_GRAT_REL Command Parameter(s) : SET_POINT_INCREMENT PP078420 Subsch. ID : 90 Det. descr. : MOVE GRATING OF A RELATIVE POSITION	PC113420 -11650 <dec>	
	ET=+ UT=+00.00.03	DMC_SET_BBID DMC_SET_BBID Command Parameter(s) : BUILDING_BLOCK_ID PP070420 Subsch. ID : 90 Det. descr. : SET BBID IN DMC	PC079420 1080557619 <dec>	
	ET=+ UT=+00.00.01	DMC_MOVE_GRAT_REL_RAW DMC_MOVE_GRAT_REL Command Parameter(s) : SET_POINT_INCREMENT PP078420 Subsch. ID : 90 Det. descr. : MOVE GRATING OF A RELATIVE POSITION	PC113420 -23301 <dec>	

PACS_Spec_Gra_IST_Full_Charac_OBS
 File: H_COP_PAC_X012.xls
 Author: R. Biggins



Step No.	Time	Activity/Remarks	TC/TLM	Display/ Branch
	ET=+ UT=+00.00.03	DMC_MOVE_GRAT_REL_RAW DMC_MOVE_GRAT_REL Command Parameter(s) : SET_POINT_INCREMENT PP078420 Subsch. ID : 90 Det. descr. : MOVE GRATING OF A RELATIVE POSITION	PC113420 -23301 <dec>	
	ET=+ UT=+00.00.03	DMC_MOVE_GRAT_REL_RAW DMC_MOVE_GRAT_REL Command Parameter(s) : SET_POINT_INCREMENT PP078420 Subsch. ID : 90 Det. descr. : MOVE GRATING OF A RELATIVE POSITION	PC113420 -23301 <dec>	
	ET=+ UT=+00.00.03	DMC_SET_BBID DMC_SET_BBID Command Parameter(s) : BUILDING_BLOCK_ID PP070420 Subsch. ID : 90 Det. descr. : SET BBID IN DMC	PC079420 1080557620 <dec>	
	ET=+ UT=+00.00.01	DMC_MOVE_GRAT_REL_RAW DMC_MOVE_GRAT_REL Command Parameter(s) : SET_POINT_INCREMENT PP078420 Subsch. ID : 90 Det. descr. : MOVE GRATING OF A RELATIVE POSITION	PC113420 -69903 <dec>	
	ET=+ UT=+00.00.05	DMC_MOVE_GRAT_REL_RAW DMC_MOVE_GRAT_REL Command Parameter(s) : SET_POINT_INCREMENT PP078420 Subsch. ID : 90 Det. descr. : MOVE GRATING OF A RELATIVE POSITION	PC113420 -69903 <dec>	
	ET=+ UT=+00.00.05	DMC_MOVE_GRAT_REL_RAW DMC_MOVE_GRAT_REL Command Parameter(s) : SET_POINT_INCREMENT PP078420 Subsch. ID : 90 Det. descr. : MOVE GRATING OF A RELATIVE POSITION	PC113420 -69903 <dec>	
12		Bring the grating back to central position		Next Step: 13

PACS_Spec_Gra_IST_Full_Charac_OBS
 File: H_COP_PAC_X012.xls
 Author: R. Biggins



Step No.	Time	Activity/Remarks	TC/TLM	Display/ Branch
	ET=+ UT=+00.00.05	DMC_SET_BBID Command Parameter(s) : BUILDING_BLOCK_ID PP070420 Subsch. ID : 90 Det. descr. : SET BBID IN DMC	PC079420 1080492038 <dec>	
	ET=+ UT=+00.00.01	DMC_MOVE_GRAT_ABS_RAW Command Parameter(s) : SET_POINT PP079420 Subsch. ID : 90 Det. descr. : MOVE GRATING TO AN ABSOLUTE POSITION	PC112420 500000 <dec>	
13		<i>Reset diagnostic housekeeping</i>		Next Step: 14
	ET=+ UT=+00.00.25	DMC_STOP_DIAG_HK Subsch. ID : 90 Det. descr. : STOP THE ACQUISITION OF THE DIAGNOSTIC HK	PC147420	
14		<i>Transition to SAFE mode</i>		Next Step: 15
	ET=+ UT=+00.00.01	DMC_SET_BBID Command Parameter(s) : BUILDING_BLOCK_ID PP070420 Subsch. ID : 90 Det. descr. : SET BBID IN DMC	PC079420 1075314689 <dec>	
	ET=+ UT=+00.00.01	DPU_START_OBCP Command Parameter(s) : PROCEDURE_ID PP012380 NUMBER_OF_TIMES PP010380 Subsch. ID : 90 Det. descr. : START AN OBCP WITH THE COMMANDED PARAMETERS	PC012380 GO_SAFE_MODE 0 <dec>	
15		<i>Set default variables</i>		Next Step: END

PACS_Spec_Gra_IST_Full_Charac_OBS
 File: H_COP_PAC_X012.xls
 Author: R. Biggins



Step No.	Time	Activity/Remarks	TC/TLM	Display/ Branch
	ET=+ UT=+00.00.20	DMC_SET_BBID Command Parameter(s) : BUILDING_BLOCK_ID PP070420 Subsch. ID : 90 Det. descr. : SET BBID IN DMC	DMC_SET_BBID PC079420 40000000 <hex>	
	ET=+ UT=+00.00.00	DMC_SET_OBSID Command Parameter(s) : OBSERVATION_ID PP069420 Subsch. ID : 90 Det. descr. : SET OBSID IN DMC	DMC_SET_OBSID PC078420 0 <dec>	
End of Procedure				