

PACS\_Spec\_Gra\_IST\_Home\_OBS  
 File: H\_COP\_PAC\_GX11.xls  
 Author: R. Biggins



## Procedure Summary

### Objectives

The objective of this procedure is to home the grating.

Based on procedure:  
 PACS\_Spec\_Gra\_IST\_Home\_OBS (v1)

### Summary of Constraints

This procedure should be executed on PACS request only

### Spacecraft Configuration

**Start of Procedure**

PACS in NO\_PRIME (SAFE) mode

**End of Procedure**

PACS in NO\_PRIME (SAFE) mode

### Reference File(s)

**Input Command Sequences**

**Output Command Sequences**

HCPGX11

### Referenced Displays

ANDs      GRDs      SLDs

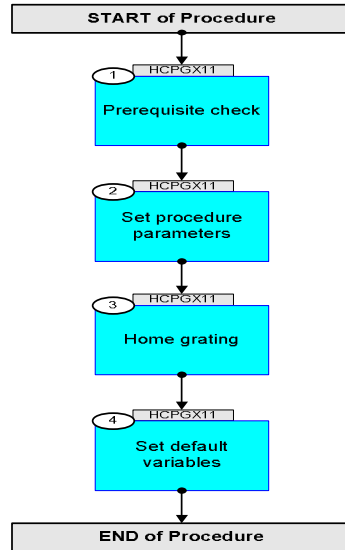
### Configuration Control Information

DATE	FOP ISSUE	VERSION	MODIFICATION DESCRIPTION	AUTHOR	SPR REF
22/10/08	2	1	Created	R. Biggins	
15/04/09	2.3	2	Final updates before flight - Summary updated - TC flags updated - TM checks removed (not produced in SAFE mode)	R. Biggins	

PACS\_Spec\_Gra\_IST\_Home\_OBS  
File: H\_COP\_PAC\_GX11.xls  
Author: R. Biggins



## Procedure Flowchart Overview



PACS\_Spec\_Gra\_IST\_Home\_OBS  
 File: H\_COP\_PAC\_GX11.xls  
 Author: R. Biggins



Step No.	Time	Activity/Remarks	TC/TLM	Display/ Branch
<b>Beginning of Procedure</b>				
<p><i>TC Seq. Name :HCPGX11 (Home grating)</i></p> <p><i>TimeTag Type: B</i>  <i>Sub Schedule ID:</i></p> <p style="text-align: center;">□</p>				
1		<i>Prerequisite check</i>		Next Step: 2
		Verify that the HSC/ICC has supplied a valid OBSID value:  <b>OBS_ID = 0xnnnn nnnn</b>		
		Verify that the ICC has supplied a valid HOMING_MODE value:  <b>MODE = NEGATIVE (Def)</b>		
2		<i>Set procedure parameters</i>		Next Step: 3
	ET=+00.00.00 UT=+00.00.00	<b>DMC_SET_OBSID</b>  <i>Command Parameter(s) :</i> <b>OBSERVATION_ID                    PP069420</b>  <i>TC Control Flags :</i> <b>    GBM IL DSE</b> <b>    --Y -- ---</b>  <i>Subsch. ID : 90</i> <i>Det. descr. : SET OBSID IN DMC</i>	<b>PC078420</b>  <b>OBS_ID</b>	
3		<i>Home grating</i>		Next Step: 4
	ET=+00.00.01 UT=+00.00.01	<b>DMC_HOME_GRAT</b>  <i>Command Parameter(s) :</i> <b>    HOMING_MODE                    PP077420</b>  <i>Subsch. ID : 90</i> <i>Det. descr. : MOVE GRATING TO THE HOME POSITION</i>	<b>PC114420</b>  <b>MODE</b>	
4		<i>Set default variables</i>		Next Step: END

PACS\_Spec\_Gra\_IST\_Home\_OBS  
 File: H\_COP\_PAC\_GX11.xls  
 Author: R. Biggins



Step No.	Time	Activity/Remarks	TC/TLM	Display/ Branch
	ET=+00.00.01 UT=+00.00.01	DMC_SET_OBSID  DMC_SET_OBSID  <i>Command Parameter(s) :</i> OBSERVATION_ID           PP069420  <i>Subsch. ID : 90</i> Det. descr. : SET OBSID IN DMC	PC078420  00000000 <hex>	
	ET=+00.00.00 UT=+00.00.00	DMC_SET_BBID  DMC_SET_BBID  <i>Command Parameter(s) :</i> BUILDING_BLOCK_ID       PP070420  <i>Subsch. ID : 90</i> Det. descr. : SET BBID IN DMC	PC079420  40000000 <hex>	
<b>End of Procedure</b>				