

PACS\_Phot\_Fil\_Testseq\_OBS  
 File: H\_COP\_PAC\_F104.xls  
 Author: R. Biggins



## Procedure Summary

### Objectives

The objective of this procedure is to move the spectroscopy filterwheel in order to analyse the move characteristics (offline)

Based on procedure:  
 PACS\_Phot\_Fil\_Testseq\_OBS (v1)

### Summary of Constraints

This procedure should be executed as part of the Short Functional Test (HeII conditions)  
 This procedure may also be executed on PACS request

RT Science must be enabled to receive the Diagnostic HK packets

### Spacecraft Configuration

#### Start of Procedure

PACS in NO\_PRIME (SAFE) mode  
 - PACS is generating Photometry HK  
 - PACS is generating Diagnostic HK

#### End of Procedure

PACS in NO\_PRIME (SAFE) mode  
 - PACS is generating Photometry HK  
 - PACS is generating Diagnostic HK

### Reference File(s)

#### Input Command Sequences

#### Output Command Sequences

HCPF104

### Referenced Displays

ANDs	GRDs	SLDs
ZAZ98999		
PA016420		

### Configuration Control Information

DATE	FOP ISSUE	VERSION	MODIFICATION DESCRIPTION	AUTHOR	SPR REF
13/08/08		1	Created	R. Biggins	
13/11/08	2	2	Updates due to initial testing - New step (1) added for prerequisite check - Initial OBSID value changed to FP	R. Biggins	

PACS\_Phot\_Fil\_Testseq\_OBS  
File: H\_COP\_PAC\_F104.xls  
Author: R. Biggins

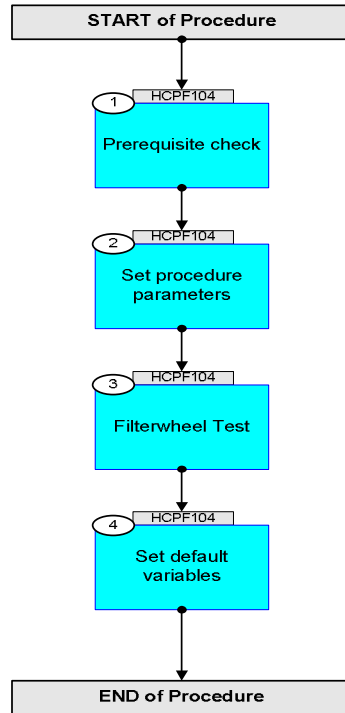


15/04/09	2.3	2.01	Validation : Final updates before flight <input type="checkbox"/> - Summary updated <input type="checkbox"/> - TC flags updated	R. Biggins	
----------	-----	------	---	------------	--

PACS\_Phot\_Fil\_Testseq\_OBS  
File: H\_COP\_PAC\_F104.xls  
Author: R. Biggins



## Procedure Flowchart Overview





PACS\_Phot\_Fil\_Testseq\_OBS  
 File: H\_COP\_PAC\_F104.xls  
 Author: R. Biggins



Step No.	Time	Activity/Remarks	TC/TLM	Display/ Branch
	ET=+00.00.01 UT=+00.00.01	DMC_MOVE_PHOT_FW_LOC  DMC_MOVE_PHOT_FW_LOC  Command Parameter(s) : FW_ID PP075420  Subsch. ID : 90 Det. descr. : MOVE PHOTOMETER FILTER WHEEL TO LOCATION	PC136420  POS B	
		Verify Telemetry DM_FWPH_CUR_POS PM064420	= POSITION B	AND=PA016420
	ET=+00.00.15 UT=+00.00.15	DMC_MOVE_PHOT_FW_LOC  DMC_MOVE_PHOT_FW_LOC  Command Parameter(s) : FW_ID PP075420  Subsch. ID : 90 Det. descr. : MOVE PHOTOMETER FILTER WHEEL TO LOCATION	PC136420  POS A	
		Verify Telemetry DM_FWPH_CUR_POS PM064420	= POSITION A	AND=PA016420
	ET=+00.00.35 UT=+00.00.35	DMC_MOVE_PHOT_FW_LOC  DMC_MOVE_PHOT_FW_LOC  Command Parameter(s) : FW_ID PP075420  Subsch. ID : 90 Det. descr. : MOVE PHOTOMETER FILTER WHEEL TO LOCATION	PC136420  POS B	
		Verify Telemetry DM_FWPH_CUR_POS PM064420	= POSITION B	AND=PA016420
	ET=+00.00.35 UT=+00.00.35	DMC_MOVE_PHOT_FW_LOC  DMC_MOVE_PHOT_FW_LOC  Command Parameter(s) : FW_ID PP075420  Subsch. ID : 90 Det. descr. : MOVE PHOTOMETER FILTER WHEEL TO LOCATION	PC136420  POS A	
		Verify Telemetry DM_FWPH_CUR_POS PM064420	= POSITION A	AND=PA016420
	ET=+00.00.35 UT=+00.00.35	DMC_MOVE_PHOT_FW_LOC  DMC_MOVE_PHOT_FW_LOC  Command Parameter(s) : FW_ID PP075420  Subsch. ID : 90 Det. descr. : MOVE PHOTOMETER FILTER WHEEL TO LOCATION	PC136420  POS B	

PACS\_Phot\_Fil\_Testseq\_OBS  
 File: H\_COP\_PAC\_F104.xls  
 Author: R. Biggins



Step No.	Time	Activity/Remarks	TC/TLM	Display/ Branch
		Verify Telemetry DM_FWPH_CUR_POS PM064420	= POSITION B	AND=PA016420
	ET=+00.00.35 UT=+00.00.35	DMC_MOVE_PHOT_FW_LOC DMC_MOVE_PHOT_FW_LOC Command Parameter(s) : FW_ID PP075420 Subsch. ID : 90 Det. descr. : MOVE PHOTOMETER FILTER WHEEL TO LOCATION	PC136420 POS A	
		Verify Telemetry DM_FWPH_CUR_POS PM064420	= POSITION A	AND=PA016420
	ET=+00.00.35 UT=+00.00.35	DMC_MOVE_PHOT_FW_LOC DMC_MOVE_PHOT_FW_LOC Command Parameter(s) : FW_ID PP075420 Subsch. ID : 90 Det. descr. : MOVE PHOTOMETER FILTER WHEEL TO LOCATION	PC136420 POS B	
		Verify Telemetry DM_FWPH_CUR_POS PM064420	= POSITION B	AND=PA016420
		Offline analysis of the diagnostic HK by the ICCs will provide more details on the move characteristics but is not required for the successful completion of this procedure		
4		Set default variables		Next Step: END
	ET=+00.00.01 UT=+00.00.01	DMC_SET_OBSID DMC_SET_OBSID Command Parameter(s) : OBSERVATION_ID PP069420 TC Control Flags : GBM IL DSE --Y -- -- Subsch. ID : 90 Det. descr. : SET OBSID IN DMC	PC078420 00000000 <hex>	
	ET=+00.00.00 UT=+00.00.00	DMC_SET_BBID DMC_SET_BBID Command Parameter(s) : BUILDING_BLOCK_ID PP070420 Subsch. ID : 90 Det. descr. : SET BBID IN DMC	PC079420 40000000 <hex>	
		Verify Telemetry DM_OBSID PM028420	= 00000000 <hex>	AND=ZAZ98999

PACS\_Phot\_Fil\_Testseq\_OBS  
 File: H\_COP\_PAC\_F104.xls  
 Author: R. Biggins



Step No.	Time	Activity/Remarks	TC/TLM	Display/ Branch
		Verify Telemetry DM_BBID PM029420	= 40000000 <hex>	AND=ZAZ98999
<b>End of Procedure</b>				