

PACS\_Spec\_Fil\_Testseq\_OBS  
 File: H\_COP\_PAC\_F003.xls  
 Author: R. Biggins



## Procedure Summary

### Objectives

The objective of this procedure is to move the spectroscopy filterwheel in order to analyse the move characteristics (offline)

Based on procedure:  
 PACS\_Spec\_Fil\_Testseq\_OBS (v1)

### Summary of Constraints

This procedure should be executed as part of the Short Functional Test (HeII conditions)  
 This procedure may also be executed on PACS request

### Spacecraft Configuration

#### Start of Procedure

PACS in NO\_PRIME (SAFE) mode  
 - producing Spectroscopy HK packets  
 - producing Diagnostic HK packets

#### End of Procedure

PACS in NO\_PRIME (SAFE) mode  
 - producing Spectroscopy HK packets  
 - producing Diagnostic HK packets

### Reference File(s)

#### Input Command Sequences

#### Output Command Sequences

HCPF003

### Referenced Displays

**ANDs**      **GRDs**      **SLDs**  
 ZAZ98999  
 PA016420

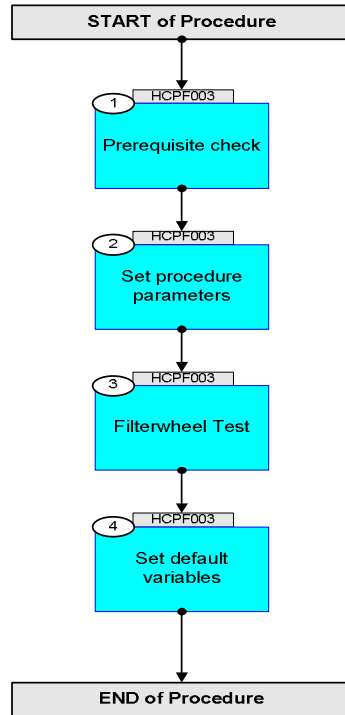
### Configuration Control Information

DATE	FOP ISSUE	VERSION	MODIFICATION DESCRIPTION	AUTHOR	SPR REF
13/08/08		1	Created	R. Biggins	
13/11/08	2	2	Updates due to initial testing - New step (1) added for prerequisite check - Initial OBSID value changed to FP	R. Biggins	
15/04/09	2.3	2.01	Validation : Final updates before flight - Summary updated - TC flags updated	R. Biggins	

PACS\_Spec\_Fil\_Testseq\_OBS  
File: H\_COP\_PAC\_F003.xls  
Author: R. Biggins



## Procedure Flowchart Overview



PACS\_Spec\_Fil\_Testseq\_OBS  
 File: H\_COP\_PAC\_F003.xls  
 Author: R. Biggins



Step No.	Time	Activity/Remarks	TC/TLM	Display/ Branch
<b>Beginning of Procedure</b>				
TC Seq. Name :HCPF003 (Filterwheel Test -S)				
TimeTag Type: B Sub Schedule ID:  □				
1		Prerequisite check		Next Step: 2
1.1		HSC/ICC input		□
		Verify that the HSC/ICC has supplied a valid OBSID value:  OBS_ID = 0xxxxx nnnn		
2		Set procedure parameters		Next Step: 3
	ET=+00.00.00 UT=+00.00.00	DMC_SET_OBSID  Command Parameter(s) : OBSERVATION_ID                           PP069420  TC Control Flags :  GBM IL DSE --Y -- ---  Subsch. ID : 90 Det. descr. : SET OBSID IN DMC	PC078420  OBS_ID	
		Verify Telemetry  DM_OBSID                           PM028420	OBS_ID	AND=ZAZ98999
3		Filterwheel Test		Next Step: 4
		<b>NOTE:</b> The following test should be executed with the defined time delay between each TC, therefore any TM checks should be done without additional delay.		
	ET=+00.00.01 UT=+00.00.01	DMC_SWON_FW_SPEC  TC Control Flags :  GBM IL DSE --Y -- ---  Subsch. ID : 90 Det. descr. : SWITCH ON POWER SUPPLY OF FILTER WHEEL SPEC	PC128420	

PACS\_Spec\_Fil\_Testseq\_OBS  
 File: H\_COP\_PAC\_F003.xls  
 Author: R. Biggins



Step No.	Time	Activity/Remarks	TC/TLM	Display/ Branch
	ET=+00.00.01 UT=+00.00.01	DMC_MOVE_SPEC_FW_LOC  DMC_MOVE_SPEC_FW_LOC  Command Parameter(s) :  FW_ID                    PP075420  Subsch. ID : 90 Det. descr. : MOVE SPECTROMETER FILTER WHEEL TO LOCATION	PC134420  POS B	
		Verify Telemetry  DM_FWSP_CUR_POS                    PM059420	= POSITION B	AND=PA016420
	ET=+00.00.15 UT=+00.00.15	DMC_MOVE_SPEC_FW_LOC  DMC_MOVE_SPEC_FW_LOC  Command Parameter(s) :  FW_ID                    PP075420  Subsch. ID : 90 Det. descr. : MOVE SPECTROMETER FILTER WHEEL TO LOCATION	PC134420  POS A	
		Verify Telemetry  DM_FWSP_CUR_POS                    PM059420	= POSITION A	AND=PA016420
	ET=+00.00.35 UT=+00.00.35	DMC_MOVE_SPEC_FW_LOC  DMC_MOVE_SPEC_FW_LOC  Command Parameter(s) :  FW_ID                    PP075420  Subsch. ID : 90 Det. descr. : MOVE SPECTROMETER FILTER WHEEL TO LOCATION	PC134420  POS B	
		Verify Telemetry  DM_FWSP_CUR_POS                    PM059420	= POSITION B	AND=PA016420
	ET=+00.00.35 UT=+00.00.35	DMC_MOVE_SPEC_FW_LOC  DMC_MOVE_SPEC_FW_LOC  Command Parameter(s) :  FW_ID                    PP075420  Subsch. ID : 90 Det. descr. : MOVE SPECTROMETER FILTER WHEEL TO LOCATION	PC134420  POS A	
		Verify Telemetry  DM_FWSP_CUR_POS                    PM059420	= POSITION A	AND=PA016420
	ET=+00.00.35 UT=+00.00.35	DMC_MOVE_SPEC_FW_LOC  DMC_MOVE_SPEC_FW_LOC  Command Parameter(s) :  FW_ID                    PP075420  Subsch. ID : 90 Det. descr. : MOVE SPECTROMETER FILTER WHEEL TO LOCATION	PC134420  POS B	

PACS\_Spec\_Fil\_Testseq\_OBS  
 File: H\_COP\_PAC\_F003.xls  
 Author: R. Biggins



Step No.	Time	Activity/Remarks	TC/TLM	Display/ Branch
		Verify Telemetry DM_FWSP_CUR_POS PM059420	= POSITION B	AND=PA016420
	ET=+00.00.35 UT=+00.00.35	DMC_MOVE_SPEC_FW_LOC DMC_MOVE_SPEC_FW_LOC Command Parameter(s) : FW_ID PP075420 Subsch. ID : 90 Det. descr. : MOVE SPECTROMETER FILTER WHEEL TO LOCATION	PC134420 POS A	
		Verify Telemetry DM_FWSP_CUR_POS PM059420	= POSITION A	AND=PA016420
	ET=+00.00.35 UT=+00.00.35	DMC_MOVE_SPEC_FW_LOC DMC_MOVE_SPEC_FW_LOC Command Parameter(s) : FW_ID PP075420 Subsch. ID : 90 Det. descr. : MOVE SPECTROMETER FILTER WHEEL TO LOCATION	PC134420 POS B	
		Verify Telemetry DM_FWSP_CUR_POS PM059420	= POSITION B	AND=PA016420
	ET=+00.00.35 UT=+00.00.35	DMC_SWON_GRAT_CONT DMC_SWON_GRAT_CONT Subsch. ID : 90 Det. descr. : SWITCH ON GRATING CONTROLLER	PC108420	
		Offline analysis of the diagnostic HK by the ICCs will provide more details on the move characteristics but is not required for the successful completion of this procedure		
4		Set default variables		Next Step: END
	ET=+00.00.01 UT=+00.00.01	DMC_SET_OBSID DMC_SET_OBSID Command Parameter(s) : OBSERVATION_ID PP069420 TC Control Flags : GBM IL DSE --Y -- -- Subsch. ID : 90 Det. descr. : SET OBSID IN DMC	PC078420 00000000 <hex>	

PACS\_Spec\_Fil\_Testseq\_OBS  
 File: H\_COP\_PAC\_F003.xls  
 Author: R. Biggins



Step No.	Time	Activity/Remarks	TC/TLM	Display/ Branch
	ET=+00.00.00 UT=+00.00.00	DMC_SET_BBID  DMC_SET_BBID  Command Parameter(s) : BUILDING_BLOCK_ID PP070420  Subsch. ID : 90 Det. descr. : SET BBID IN DMC	PC079420  40000000 <hex>	
		Verify Telemetry  DM_OBSID PM028420	= 00000000 <hex>	AND=ZAZ98999
		Verify Telemetry  DM_BBID PM029420	= 40000000 <hex>	AND=ZAZ98999
<b>End of Procedure</b>				