

PACS_Phot_Cold_Startinputsignal_OBS
File: H_COP_PAC_D305.xls
Author: R. Biggins



Procedure Summary

Objectives

The objective of this procedure is to execute the following tests as described in the PhFPU UN (draft 7):
Section 4.3.3 - Data mode at Bolo & HK
Section 4.2.3 - BU level test
Section 4.3.2 - CL level test
(first part - all groups in parallel
second part - group by group
third part - changes of sequence mode)

Based on procedure:
PACS_Phot_Cold_Startinputsignal_OBS (v1)

Summary of Constraints

WARNING: the SPU stops and starts several times

This procedure should be executed as part of the Short Functional Test (HeII conditions)

RT Science must be enabled to receive the Science HK packets

Spacecraft Configuration

Start of Procedure

PACS in NO_PRIME (SAFE) mode
- PACS is generating Photometry HK
- PACS is generating Science HK

End of Procedure

PACS in NO_PRIME (SAFE) mode
- PACS is generating Photometry HK
- PACS is generating Science HK

Reference File(s)

Input Command Sequences

Output Command Sequences

HCPD305

Referenced Displays

ANDs	GRDs	SLDs
ZAZ8W999		(None)

Configuration Control Information

Status : Version 2 - Unchanged
Last Checkin: 14/11/08

PACS_Phot_Cold_Startinputsignal_OBS
 File: H_COP_PAC_D305.xls
 Author: R. Biggins

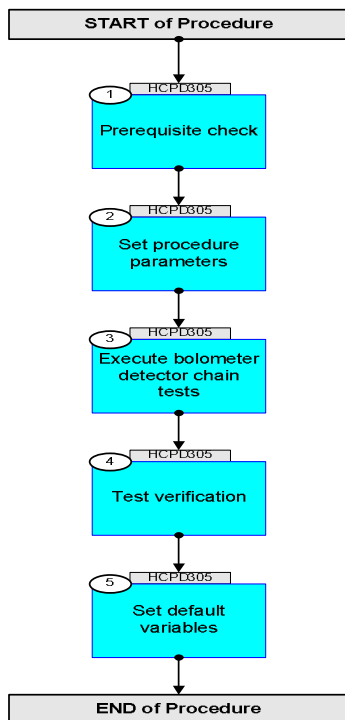


DATE	FOP ISSUE	VERSION	MODIFICATION DESCRIPTION	AUTHOR	SPR REF
15/08/08		1	Created	R. Biggins	
14/11/08	2	2	Updates due to initial testing - New step (1) added for prerequisite check - Initial OBSID value changed to FP - AND updated for all TM parameters	R. Biggins	
15/04/09	2.3	2.01	Validation : Final updates before flight - Summary updated - TC flags updated - AND used in TM checks updated	R. Biggins	

PACS_Phot_Cold_Startinputsignal_OBS
File: H_COP_PAC_D305.xls
Author: R. Biggins



Procedure Flowchart Overview



PACS_Photo_Cold_Startinputsignal_OBS
 File: H_COP_PAC_D305.xls
 Author: R. Biggins



Step No.	Time	Activity/Remarks	TC/TLM	Display/ Branch
Beginning of Procedure				
TC Seq. Name :HCPD305 (Bolometer Chain Test)				
TimeTag Type: B Sub Schedule ID: <input type="checkbox"/>				
1		Prerequisite check		Next Step: 2
1.1		HSC/ICC input		<input type="checkbox"/>
		Verify that the HSC/ICC has supplied a valid OBSID value: OBS_ID = 0xnnnn nnnn		
2		Set procedure parameters		Next Step: 3
	ET=+00.00.00 UT=+00.00.00	DMC_SET_OBSID Command Parameter(s) : OBSERVATION_ID PP069420 TC Control Flags : GBM IL DSE --Y -- --- Subsch. ID : 90 Det. descr. : SET OBSID IN DMC	DMC_SET_OBSID PC078420 OBS_ID	
		Verify Telemetry DM_OBSID PM028420	OBS_ID	AND=ZAZ8W999
3		Execute bolometer detector chain tests		Next Step: 4
		NOTE: The following TCs should be sent automatically with the defined time separation		
		The following TC starts data acquisition of science and housekeeping telemetry packet generation.		

PACS_Phot_Cold_Startinputsignal_OBS
 File: H_COP_PAC_D305.xls
 Author: R. Biggins



Step No.	Time	Activity/Remarks	TC/TLM	Display/ Branch
	ET=+00.00.01 UT=+00.00.01	DMC_SEND_COMMAND_BOLC DMC_SEND_COMMAND_BOLC Command Parameter(s) : BOLOMETER_COMMAND PP071420 TC Control Flags : GBM IL DSE --Y -- --- Subsch. ID : 90 Det. descr. : SEND COMMAND TO BOL CONTROLLER	PC103420 9020001 <hex>	
		The following TCs update the bias trimmings for the Blue and Red SPU sub-assemblies		
	ET=+00.00.01 UT=+00.00.01	DMC_SEND_COMMAND_BOLC DMC_SEND_COMMAND_BOLC Command Parameter(s) : BOLOMETER_COMMAND PP071420 Subsch. ID : 90 Det. descr. : SEND COMMAND TO BOL CONTROLLER	PC103420 0 <hex>	
	ET=+00.00.21 UT=+00.00.21	DMC_SEND_COMMAND_BOLC DMC_SEND_COMMAND_BOLC Command Parameter(s) : BOLOMETER_COMMAND PP071420 Subsch. ID : 90 Det. descr. : SEND COMMAND TO BOL CONTROLLER	PC103420 160001 <hex>	
	ET=+00.00.01 UT=+00.00.01	DMC_SEND_COMMAND_BOLC DMC_SEND_COMMAND_BOLC Command Parameter(s) : BOLOMETER_COMMAND PP071420 Subsch. ID : 90 Det. descr. : SEND COMMAND TO BOL CONTROLLER	PC103420 150001 <hex>	
	ET=+00.00.01 UT=+00.00.01	DMC_SEND_COMMAND_BOLC DMC_SEND_COMMAND_BOLC Command Parameter(s) : BOLOMETER_COMMAND PP071420 Subsch. ID : 90 Det. descr. : SEND COMMAND TO BOL CONTROLLER	PC103420 170001 <hex>	
	ET=+00.00.03 UT=+00.00.03	DMC_SEND_COMMAND_BOLC DMC_SEND_COMMAND_BOLC Command Parameter(s) : BOLOMETER_COMMAND PP071420 Subsch. ID : 90 Det. descr. : SEND COMMAND TO BOL CONTROLLER	PC103420 50000 <hex>	

PACS_Phot_Cold_Startinputsignal_OBS
 File: H_COP_PAC_D305.xls
 Author: R. Biggins



Step No.	Time	Activity/Remarks	TC/TLM	Display/ Branch
	ET=+00.00.01 UT=+00.00.01	DMC_SEND_COMMAND_BOLC DMC_SEND_COMMAND_BOLC Command Parameter(s) : BOLOMETER_COMMAND PP071420 Subsch. ID : 90 Det. descr. : SEND COMMAND TO BOL CONTROLLER	PC103420 13084d <hex>	
	ET=+00.00.01 UT=+00.00.01	DMC_SEND_COMMAND_BOLC DMC_SEND_COMMAND_BOLC Command Parameter(s) : BOLOMETER_COMMAND PP071420 Subsch. ID : 90 Det. descr. : SEND COMMAND TO BOL CONTROLLER	PC103420 120d6b <hex>	
	ET=+00.00.01 UT=+00.00.01	DMC_SEND_COMMAND_BOLC DMC_SEND_COMMAND_BOLC Command Parameter(s) : BOLOMETER_COMMAND PP071420 Subsch. ID : 90 Det. descr. : SEND COMMAND TO BOL CONTROLLER	PC103420 1104cb <hex>	
		The following TCs stop the SPU ASW		
	ET=+00.00.01 UT=+00.00.01	SPUS_STOP_REDUCT_COMPR SPUS_STOP_REDUCT_COMPR Subsch. ID : 90 Det. descr. : STOP THE APPLICATION PROGRAM IN SPU_SWL	PC037400	
	ET=+00.00.01 UT=+00.00.01	SPUL_STOP_REDUCT_COMPR SPUL_STOP_REDUCT_COMPR Subsch. ID : 90 Det. descr. : STOP THE APPLICATION PROGRAM IN SPU_LWL	PC038390	
		The following TC inserts the defined words into the packet sent to the DPU and indicates the SPU transmission mode		
	ET=+00.00.01 UT=+00.00.01	Execute Telecommand DMC_WRT_SPU_TRAN_MODE Command Parameter(s) : DMC_4_BYTES_WORDS_DATA PP067420 0 <hex> DMC_4_BYTES_WORDS_DATA PP067420 0 <hex> DMC_CHECKSUM PP066420 313E <hex> Subsch. ID : 90 Det. descr. : WRITE THE SPU TRASMISSION MODE	PC175420	
		The following TCs selects the number and index of raw channel for the Red and Blue SPU channels		

PACS_Photo_Cold_Startinputsignal_OBS
 File: H_COP_PAC_D305.xls
 Author: R. Biggins



Step No.	Time	Activity/Remarks	TC/TLM	Display/ Branch
	ET=+00.00.01 UT=+00.00.01	SPUS_STOP_REDUCT_COMPR Subsch. ID : 90 Det. descr. : STOP THE APPLICATION PROGRAM IN SPU_SWL	PC037400	
	ET=+00.00.01 UT=+00.00.01	SPUL_STOP_REDUCT_COMPR Subsch. ID : 90 Det. descr. : STOP THE APPLICATION PROGRAM IN SPU_LWL	PC038390	
		The following TC inserts the defined words into the packet sent to the DPU and indicates the SPU transmission mode		
	ET=+00.00.01 UT=+00.00.01	Execute Telecommand Command Parameter(s) : DMC_4_BYTES_WORDS_DATA PP067420 DMC_4_BYTES_WORDS_DATA PP067420 DMC_CHECKSUM PP066420 Subsch. ID : 90 Det. descr. : WRITE THE SPU TRASMISSION MODE	DMC_WRT_SPU_TRAN_MODE PC175420 0 <hex> 0 <hex> 313E <hex>	
		The following TCs selects the number and index of raw channel for the Red and Blue SPU channels		
	ET=+00.00.01 UT=+00.00.01	SPUS_RAW_CHAN_TRAN_MODE Command Parameter(s) : SPUS_OBS_MODE PP050400 SPUS_RCXNB PP051400 SPUS_RCX PP052400 Subsch. ID : 90 Det. descr. : RAW CHANNEL TRANSMISSION MODE FOR SPUS	SPUS_RAW_CHAN_TRAN_MODE PC035400 PHOT 0 <dec> 1 <dec>	
	ET=+00.00.01 UT=+00.00.01	SPUL_RAW_CHAN_TRAN_MODE Command Parameter(s) : SPUL_OBS_MODE PP032390 SPUL_RCXNB PP033390 SPUL_RCX PP034390 Subsch. ID : 90 Det. descr. : RAW CHANNEL TRANSMISSION MODE FOR SPUL	SPUL_RAW_CHAN_TRAN_MODE PC036390 PHOT 0 <dec> 1 <dec>	
		The following TCs are used to write the table of the photoconductors constants, which are relevant for the pre-processing step.		

PACS_Phot_Cold_Startinputsignal_OBS
 File: H_COP_PAC_D305.xls
 Author: R. Biggins



Step No.	Time	Activity/Remarks	TC/TLM	Display/ Branch
		SPUL_4_BYTES_WORDS_DATA PP037390 SPUL_4_BYTES_WORDS_DATA PP037390 SPUL_4_BYTES_WORDS_DATA PP037390 SPUL_4_BYTES_WORDS_DATA PP037390 SPUL_4_BYTES_WORDS_DATA PP037390 SPUL_4_BYTES_WORDS_DATA PP037390 SPUL_4_BYTES_WORDS_DATA PP037390 SPUL_4_BYTES_WORDS_DATA PP037390 SPUL_4_BYTES_WORDS_DATA PP037390 SPUL_4_BYTES_WORDS_DATA PP037390 SPUL_4_BYTES_WORDS_DATA PP037390 SPUL_4_BYTES_WORDS_DATA PP037390 SPUL_4_BYTES_WORDS_DATA PP037390 SPUL_4_BYTES_WORDS_DATA PP037390 SPUL_CHECKSUM PP036390	0 <hex> 0 <hex> 0 <hex> 0 <hex> 0 <hex> 0 <hex> 0 <hex> 0 <hex> 0 <hex> 0 <hex> 0 <hex> 0 <hex> 0 <hex> 0 <hex> 5F01 <hex>	
		<i>Subsch. ID : 90</i> Det. descr. : WRITE DETECTOR CONSTANTS FOR THE RED PHOTOMETER ARRAY		
	ET=+00.00.01 UT=+00.00.01	DPU_SEND_TIME <i>Subsch. ID : 90</i> Det. descr. : DPU SENDS THE TIME TO DEC/MEC	DPU_SEND_TIME PC007380	
	ET=+00.00.01 UT=+00.00.01	DMC_SET_TIME <i>Subsch. ID : 90</i> Det. descr. : SET THE TIME PREVIOUSLY WRITTEN BY THE WRITE TIME COMMAND	DMC_SET_TIME PC077420	
		The following TCs start the SPU ASW		
	ET=+00.00.01 UT=+00.00.01	SPUS_START_REDUCT_COMPR <i>Subsch. ID : 90</i> Det. descr. : START THE APPLICATION PROGRAM IN SPU_SWL	SPUS_START_REDUCT_COMPR PC039400	
	ET=+00.00.01 UT=+00.00.01	SPUL_START_REDUCT_COMPR <i>Subsch. ID : 90</i> Det. descr. : START THE APPLICATION PROGRAM IN SPU_LWL	SPUL_START_REDUCT_COMPR PC040390	
	ET=+00.00.02 UT=+00.00.02	DMC_SEND_COMMAND_BOLC Command Parameter(s) : BOLOMETER_COMMAND PP071420 <i>Subsch. ID : 90</i> Det. descr. : SEND COMMAND TO BOL CONTROLLER	DMC_SEND_COMMAND_BOLC PC103420 f0001 <hex>	

PACS_Phot_Cold_Startinputsignal_OBS
 File: H_COP_PAC_D305.xls
 Author: R. Biggins



Step No.	Time	Activity/Remarks	TC/TLM	Display/ Branch
	ET=+00.00.01 UT=+00.00.01	DMC_SEND_COMMAND_BOLC DMC_SEND_COMMAND_BOLC Command Parameter(s) : BOLOMETER_COMMAND PP071420 Subsch. ID : 90 Det. descr. : SEND COMMAND TO BOL CONTROLLER	PC103420 8000001 <hex>	
	ET=+00.00.01 UT=+00.00.01	DMC_SEND_COMMAND_BOLC DMC_SEND_COMMAND_BOLC Command Parameter(s) : BOLOMETER_COMMAND PP071420 Subsch. ID : 90 Det. descr. : SEND COMMAND TO BOL CONTROLLER	PC103420 1404cb <hex>	
	ET=+00.00.01 UT=+00.00.01	DMC_SEND_COMMAND_BOLC DMC_SEND_COMMAND_BOLC Command Parameter(s) : BOLOMETER_COMMAND PP071420 Subsch. ID : 90 Det. descr. : SEND COMMAND TO BOL CONTROLLER	PC103420 10047a <hex>	
	ET=+00.00.11 UT=+00.00.11	DMC_SEND_COMMAND_BOLC DMC_SEND_COMMAND_BOLC Command Parameter(s) : BOLOMETER_COMMAND PP071420 Subsch. ID : 90 Det. descr. : SEND COMMAND TO BOL CONTROLLER	PC103420 10048a <hex>	
	ET=+00.00.11 UT=+00.00.11	DMC_SEND_COMMAND_BOLC DMC_SEND_COMMAND_BOLC Command Parameter(s) : BOLOMETER_COMMAND PP071420 Subsch. ID : 90 Det. descr. : SEND COMMAND TO BOL CONTROLLER	PC103420 10049a <hex>	
	ET=+00.00.11 UT=+00.00.11	DMC_SEND_COMMAND_BOLC DMC_SEND_COMMAND_BOLC Command Parameter(s) : BOLOMETER_COMMAND PP071420 Subsch. ID : 90 Det. descr. : SEND COMMAND TO BOL CONTROLLER	PC103420 1004ab <hex>	

PACS_Phot_Cold_Startinputsignal_OBS
 File: H_COP_PAC_D305.xls
 Author: R. Biggins



Step No.	Time	Activity/Remarks	TC/TLM	Display/ Branch
	ET=+00.00.11 UT=+00.00.11	DMC_SEND_COMMAND_BOLC DMC_SEND_COMMAND_BOLC Command Parameter(s) : BOLOMETER_COMMAND PP071420 Subsch. ID : 90 Det. descr. : SEND COMMAND TO BOL CONTROLLER	PC103420 1404dc <hex>	
	ET=+00.00.11 UT=+00.00.11	DMC_SEND_COMMAND_BOLC DMC_SEND_COMMAND_BOLC Command Parameter(s) : BOLOMETER_COMMAND PP071420 Subsch. ID : 90 Det. descr. : SEND COMMAND TO BOL CONTROLLER	PC103420 1404ec <hex>	
	ET=+00.00.11 UT=+00.00.11	DMC_SEND_COMMAND_BOLC DMC_SEND_COMMAND_BOLC Command Parameter(s) : BOLOMETER_COMMAND PP071420 Subsch. ID : 90 Det. descr. : SEND COMMAND TO BOL CONTROLLER	PC103420 1404fc <hex>	
	ET=+00.00.11 UT=+00.00.11	DMC_SEND_COMMAND_BOLC DMC_SEND_COMMAND_BOLC Command Parameter(s) : BOLOMETER_COMMAND PP071420 Subsch. ID : 90 Det. descr. : SEND COMMAND TO BOL CONTROLLER	PC103420 f0428 <hex>	
	ET=+00.00.01 UT=+00.00.01	DMC_SEND_COMMAND_BOLC DMC_SEND_COMMAND_BOLC Command Parameter(s) : BOLOMETER_COMMAND PP071420 Subsch. ID : 90 Det. descr. : SEND COMMAND TO BOL CONTROLLER	PC103420 100850 <hex>	
	ET=+00.00.01 UT=+00.00.01	DMC_SEND_COMMAND_BOLC DMC_SEND_COMMAND_BOLC Command Parameter(s) : BOLOMETER_COMMAND PP071420 Subsch. ID : 90 Det. descr. : SEND COMMAND TO BOL CONTROLLER	PC103420 80d77 <hex>	

PACS_Phot_Cold_Startinputsignal_OBS
 File: H_COP_PAC_D305.xls
 Author: R. Biggins



Step No.	Time	Activity/Remarks	TC/TLM	Display/ Branch
	ET=+00.00.01 UT=+00.00.01	DMC_SEND_COMMAND_BOLC DMC_SEND_COMMAND_BOLC Command Parameter(s) : BOLOMETER_COMMAND PP071420 Subsch. ID : 90 Det. descr. : SEND COMMAND TO BOL CONTROLLER	PC103420 60d77 <hex>	
	ET=+00.00.01 UT=+00.00.01	DMC_SEND_COMMAND_BOLC DMC_SEND_COMMAND_BOLC Command Parameter(s) : BOLOMETER_COMMAND PP071420 Subsch. ID : 90 Det. descr. : SEND COMMAND TO BOL CONTROLLER	PC103420 705d6 <hex>	
	ET=+00.00.01 UT=+00.00.01	DMC_SET_BBID DMC_SET_BBID Command Parameter(s) : BUILDING_BLOCK_ID PP070420 Subsch. ID : 90 Det. descr. : SET BBID IN DMC	PC079420 42590002 <hex>	
	ET=+00.00.01 UT=+00.00.01	DMC_SEND_COMMAND_BOLC DMC_SEND_COMMAND_BOLC Command Parameter(s) : BOLOMETER_COMMAND PP071420 Subsch. ID : 90 Det. descr. : SEND COMMAND TO BOL CONTROLLER	PC103420 b0000 <hex>	
	ET=+00.00.01 UT=+00.00.01	DMC_SEND_COMMAND_BOLC DMC_SEND_COMMAND_BOLC Command Parameter(s) : BOLOMETER_COMMAND PP071420 Subsch. ID : 90 Det. descr. : SEND COMMAND TO BOL CONTROLLER	PC103420 c0000 <hex>	
	ET=+00.00.01 UT=+00.00.01	DMC_SEND_COMMAND_BOLC DMC_SEND_COMMAND_BOLC Command Parameter(s) : BOLOMETER_COMMAND PP071420 Subsch. ID : 90 Det. descr. : SEND COMMAND TO BOL CONTROLLER	PC103420 906bc <hex>	

PACS_Phot_Cold_Startinputsignal_OBS
 File: H_COP_PAC_D305.xls
 Author: R. Biggins



Step No.	Time	Activity/Remarks	TC/TLM	Display/ Branch
	ET=+00.00.01 UT=+00.00.01	DMC_SEND_COMMAND_BOLC DMC_SEND_COMMAND_BOLC Command Parameter(s) : BOLOMETER_COMMAND PP071420 Subsch. ID : 90 Det. descr. : SEND COMMAND TO BOL CONTROLLER	PC103420 a06bc <hex>	
	ET=+00.00.01 UT=+00.00.01	DMC_SEND_COMMAND_BOLC DMC_SEND_COMMAND_BOLC Command Parameter(s) : BOLOMETER_COMMAND PP071420 Subsch. ID : 90 Det. descr. : SEND COMMAND TO BOL CONTROLLER	PC103420 e0d77 <hex>	
	ET=+00.00.01 UT=+00.00.01	DMC_SEND_COMMAND_BOLC DMC_SEND_COMMAND_BOLC Command Parameter(s) : BOLOMETER_COMMAND PP071420 Subsch. ID : 90 Det. descr. : SEND COMMAND TO BOL CONTROLLER	PC103420 d0000 <hex>	
	ET=+00.00.01 UT=+00.00.01	DMC_SEND_COMMAND_BOLC DMC_SEND_COMMAND_BOLC Command Parameter(s) : BOLOMETER_COMMAND PP071420 Subsch. ID : 90 Det. descr. : SEND COMMAND TO BOL CONTROLLER	PC103420 f03ad <hex>	
	ET=+00.00.01 UT=+00.00.01	DMC_SET_BBID DMC_SET_BBID Command Parameter(s) : BUILDING_BLOCK_ID PP070420 Subsch. ID : 90 Det. descr. : SET BBID IN DMC	PC079420 42590003 <hex>	
	ET=+00.00.01 UT=+00.00.01	DMC_SEND_COMMAND_BOLC DMC_SEND_COMMAND_BOLC Command Parameter(s) : BOLOMETER_COMMAND PP071420 Subsch. ID : 90 Det. descr. : SEND COMMAND TO BOL CONTROLLER	PC103420 140598 <hex>	

PACS_Phot_Cold_Startinputsignal_OBS
 File: H_COP_PAC_D305.xls
 Author: R. Biggins



Step No.	Time	Activity/Remarks	TC/TLM	Display/ Branch
	ET=+00.00.11 UT=+00.00.11	DMC_SEND_COMMAND_BOLC DMC_SEND_COMMAND_BOLC Command Parameter(s) : BOLOMETER_COMMAND PP071420 Subsch. ID : 90 Det. descr. : SEND COMMAND TO BOL CONTROLLER	PC103420 300e6 <hex>	
	ET=+00.00.11 UT=+00.00.11	DMC_SEND_COMMAND_BOLC DMC_SEND_COMMAND_BOLC Command Parameter(s) : BOLOMETER_COMMAND PP071420 Subsch. ID : 90 Det. descr. : SEND COMMAND TO BOL CONTROLLER	PC103420 30159 <hex>	
	ET=+00.00.11 UT=+00.00.11	DMC_SEND_COMMAND_BOLC DMC_SEND_COMMAND_BOLC Command Parameter(s) : BOLOMETER_COMMAND PP071420 Subsch. ID : 90 Det. descr. : SEND COMMAND TO BOL CONTROLLER	PC103420 301cc <hex>	
	ET=+00.00.11 UT=+00.00.11	DMC_SEND_COMMAND_BOLC DMC_SEND_COMMAND_BOLC Command Parameter(s) : BOLOMETER_COMMAND PP071420 Subsch. ID : 90 Det. descr. : SEND COMMAND TO BOL CONTROLLER	PC103420 30159 <hex>	
	ET=+00.00.11 UT=+00.00.11	DMC_SEND_COMMAND_BOLC DMC_SEND_COMMAND_BOLC Command Parameter(s) : BOLOMETER_COMMAND PP071420 Subsch. ID : 90 Det. descr. : SEND COMMAND TO BOL CONTROLLER	PC103420 300e6 <hex>	
	ET=+00.00.11 UT=+00.00.11	DMC_SET_BBID DMC_SET_BBID Command Parameter(s) : BUILDING_BLOCK_ID PP070420 Subsch. ID : 90 Det. descr. : SET BBID IN DMC	PC079420 425A0001 <hex>	

PACS_Phot_Cold_Startinputsignal_OBS
 File: H_COP_PAC_D305.xls
 Author: R. Biggins



Step No.	Time	Activity/Remarks	TC/TLM	Display/ Branch
	ET=+00.00.01 UT=+00.00.01	DMC_SEND_COMMAND_BOLC DMC_SEND_COMMAND_BOLC Command Parameter(s) : BOLOMETER_COMMAND PP071420 Subsch. ID : 90 Det. descr. : SEND COMMAND TO BOL CONTROLLER	PC103420 10300e6 <hex>	
	ET=+00.00.10 UT=+00.00.10	DMC_SEND_COMMAND_BOLC DMC_SEND_COMMAND_BOLC Command Parameter(s) : BOLOMETER_COMMAND PP071420 Subsch. ID : 90 Det. descr. : SEND COMMAND TO BOL CONTROLLER	PC103420 10301cc <hex>	
	ET=+00.00.10 UT=+00.00.10	DMC_SEND_COMMAND_BOLC DMC_SEND_COMMAND_BOLC Command Parameter(s) : BOLOMETER_COMMAND PP071420 Subsch. ID : 90 Det. descr. : SEND COMMAND TO BOL CONTROLLER	PC103420 10300e6 <hex>	
	ET=+00.00.10 UT=+00.00.10	DMC_SET_BBID DMC_SET_BBID Command Parameter(s) : BUILDING_BLOCK_ID PP070420 Subsch. ID : 90 Det. descr. : SET BBID IN DMC	PC079420 1113194498 <dec>	
	ET=+00.00.01 UT=+00.00.01	DMC_SEND_COMMAND_BOLC DMC_SEND_COMMAND_BOLC Command Parameter(s) : BOLOMETER_COMMAND PP071420 Subsch. ID : 90 Det. descr. : SEND COMMAND TO BOL CONTROLLER	PC103420 20300e6 <hex>	
	ET=+00.00.10 UT=+00.00.10	DMC_SEND_COMMAND_BOLC DMC_SEND_COMMAND_BOLC Command Parameter(s) : BOLOMETER_COMMAND PP071420 Subsch. ID : 90 Det. descr. : SEND COMMAND TO BOL CONTROLLER	PC103420 20301cc <hex>	

PACS_Phot_Cold_Startinputsignal_OBS
 File: H_COP_PAC_D305.xls
 Author: R. Biggins



Step No.	Time	Activity/Remarks	TC/TLM	Display/ Branch
	ET=+00.00.10 UT=+00.00.10	DMC_SEND_COMMAND_BOLC DMC_SEND_COMMAND_BOLC Command Parameter(s) : BOLOMETER_COMMAND PP071420 Subsch. ID : 90 Det. descr. : SEND COMMAND TO BOL CONTROLLER	PC103420 20300e6 <hex>	
	ET=+00.00.10 UT=+00.00.10	DMC_SET_BBID DMC_SET_BBID Command Parameter(s) : BUILDING_BLOCK_ID PP070420 Subsch. ID : 90 Det. descr. : SET BBID IN DMC	PC079420 425A0003 <hex>	
	ET=+00.00.01 UT=+00.00.01	DMC_SEND_COMMAND_BOLC DMC_SEND_COMMAND_BOLC Command Parameter(s) : BOLOMETER_COMMAND PP071420 Subsch. ID : 90 Det. descr. : SEND COMMAND TO BOL CONTROLLER	PC103420 30300e6 <hex>	
	ET=+00.00.10 UT=+00.00.10	DMC_SEND_COMMAND_BOLC DMC_SEND_COMMAND_BOLC Command Parameter(s) : BOLOMETER_COMMAND PP071420 Subsch. ID : 90 Det. descr. : SEND COMMAND TO BOL CONTROLLER	PC103420 30301cc <hex>	
	ET=+00.00.10 UT=+00.00.10	DMC_SEND_COMMAND_BOLC DMC_SEND_COMMAND_BOLC Command Parameter(s) : BOLOMETER_COMMAND PP071420 Subsch. ID : 90 Det. descr. : SEND COMMAND TO BOL CONTROLLER	PC103420 30300e6 <hex>	
	ET=+00.00.10 UT=+00.00.10	DMC_SET_BBID DMC_SET_BBID Command Parameter(s) : BUILDING_BLOCK_ID PP070420 Subsch. ID : 90 Det. descr. : SET BBID IN DMC	PC079420 425A0004 <hex>	

PACS_Phot_Cold_Startinputsignal_OBS
 File: H_COP_PAC_D305.xls
 Author: R. Biggins



Step No.	Time	Activity/Remarks	TC/TLM	Display/ Branch
	ET=+00.00.01 UT=+00.00.01	DMC_SEND_COMMAND_BOLC DMC_SEND_COMMAND_BOLC Command Parameter(s) : BOLOMETER_COMMAND PP071420 Subsch. ID : 90 Det. descr. : SEND COMMAND TO BOL CONTROLLER	PC103420 40300e6 <hex>	
	ET=+00.00.10 UT=+00.00.10	DMC_SEND_COMMAND_BOLC DMC_SEND_COMMAND_BOLC Command Parameter(s) : BOLOMETER_COMMAND PP071420 Subsch. ID : 90 Det. descr. : SEND COMMAND TO BOL CONTROLLER	PC103420 40301cc <hex>	
	ET=+00.00.10 UT=+00.00.10	DMC_SEND_COMMAND_BOLC DMC_SEND_COMMAND_BOLC Command Parameter(s) : BOLOMETER_COMMAND PP071420 Subsch. ID : 90 Det. descr. : SEND COMMAND TO BOL CONTROLLER	PC103420 40300e6 <hex>	
	ET=+00.00.10 UT=+00.00.10	DMC_SET_BBID DMC_SET_BBID Command Parameter(s) : BUILDING_BLOCK_ID PP070420 Subsch. ID : 90 Det. descr. : SET BBID IN DMC	PC079420 425A0005 <hex>	
	ET=+00.00.01 UT=+00.00.01	DMC_SEND_COMMAND_BOLC DMC_SEND_COMMAND_BOLC Command Parameter(s) : BOLOMETER_COMMAND PP071420 Subsch. ID : 90 Det. descr. : SEND COMMAND TO BOL CONTROLLER	PC103420 50300e6 <hex>	
	ET=+00.00.10 UT=+00.00.10	DMC_SEND_COMMAND_BOLC DMC_SEND_COMMAND_BOLC Command Parameter(s) : BOLOMETER_COMMAND PP071420 Subsch. ID : 90 Det. descr. : SEND COMMAND TO BOL CONTROLLER	PC103420 50301cc <hex>	

PACS_Phot_Cold_Startinputsignal_OBS
 File: H_COP_PAC_D305.xls
 Author: R. Biggins



Step No.	Time	Activity/Remarks	TC/TLM	Display/ Branch
	ET=+00.00.10 UT=+00.00.10	DMC_SEND_COMMAND_BOLC DMC_SEND_COMMAND_BOLC Command Parameter(s) : BOLOMETER_COMMAND PP071420 Subsch. ID : 90 Det. descr. : SEND COMMAND TO BOL CONTROLLER	PC103420 50300e6 <hex>	
	ET=+00.00.10 UT=+00.00.10	DMC_SET_BBID DMC_SET_BBID Command Parameter(s) : BUILDING_BLOCK_ID PP070420 Subsch. ID : 90 Det. descr. : SET BBID IN DMC	PC079420 425A0006 <hex>	
	ET=+00.00.01 UT=+00.00.01	DMC_SEND_COMMAND_BOLC DMC_SEND_COMMAND_BOLC Command Parameter(s) : BOLOMETER_COMMAND PP071420 Subsch. ID : 90 Det. descr. : SEND COMMAND TO BOL CONTROLLER	PC103420 60300e6 <hex>	
	ET=+00.00.10 UT=+00.00.10	DMC_SEND_COMMAND_BOLC DMC_SEND_COMMAND_BOLC Command Parameter(s) : BOLOMETER_COMMAND PP071420 Subsch. ID : 90 Det. descr. : SEND COMMAND TO BOL CONTROLLER	PC103420 60301cc <hex>	
	ET=+00.00.10 UT=+00.00.10	DMC_SEND_COMMAND_BOLC DMC_SEND_COMMAND_BOLC Command Parameter(s) : BOLOMETER_COMMAND PP071420 Subsch. ID : 90 Det. descr. : SEND COMMAND TO BOL CONTROLLER	PC103420 60300e6 <hex>	
	ET=+00.00.10 UT=+00.00.10	DMC_SET_BBID DMC_SET_BBID Command Parameter(s) : BUILDING_BLOCK_ID PP070420 Subsch. ID : 90 Det. descr. : SET BBID IN DMC	PC079420 42580001 <hex>	

PACS_Phot_Cold_Startinputsignal_OBS
 File: H_COP_PAC_D305.xls
 Author: R. Biggins



Step No.	Time	Activity/Remarks	TC/TLM	Display/ Branch
	ET=+00.00.01 UT=+00.00.01	DMC_SEND_COMMAND_BOLC DMC_SEND_COMMAND_BOLC Command Parameter(s) : BOLOMETER_COMMAND PP071420 Subsch. ID : 90 Det. descr. : SEND COMMAND TO BOL CONTROLLER	PC103420 90000 <hex>	
	ET=+00.00.01 UT=+00.00.01	DMC_SEND_COMMAND_BOLC DMC_SEND_COMMAND_BOLC Command Parameter(s) : BOLOMETER_COMMAND PP071420 Subsch. ID : 90 Det. descr. : SEND COMMAND TO BOL CONTROLLER	PC103420 a0000 <hex>	
	ET=+00.00.01 UT=+00.00.01	DMC_SEND_COMMAND_BOLC DMC_SEND_COMMAND_BOLC Command Parameter(s) : BOLOMETER_COMMAND PP071420 Subsch. ID : 90 Det. descr. : SEND COMMAND TO BOL CONTROLLER	PC103420 b08fa <hex>	
	ET=+00.00.01 UT=+00.00.01	DMC_SEND_COMMAND_BOLC DMC_SEND_COMMAND_BOLC Command Parameter(s) : BOLOMETER_COMMAND PP071420 Subsch. ID : 90 Det. descr. : SEND COMMAND TO BOL CONTROLLER	PC103420 c08fa <hex>	
	ET=+00.00.01 UT=+00.00.01	DMC_SEND_COMMAND_BOLC DMC_SEND_COMMAND_BOLC Command Parameter(s) : BOLOMETER_COMMAND PP071420 Subsch. ID : 90 Det. descr. : SEND COMMAND TO BOL CONTROLLER	PC103420 40d77 <hex>	
	ET=+00.00.01 UT=+00.00.01	DMC_SEND_COMMAND_BOLC DMC_SEND_COMMAND_BOLC Command Parameter(s) : BOLOMETER_COMMAND PP071420 Subsch. ID : 90 Det. descr. : SEND COMMAND TO BOL CONTROLLER	PC103420 14056f <hex>	

PACS_Phot_Cold_Startinputsignal_OBS
 File: H_COP_PAC_D305.xls
 Author: R. Biggins



Step No.	Time	Activity/Remarks	TC/TLM	Display/ Branch
	ET=+00.00.01 UT=+00.00.01	DMC_SEND_COMMAND_BOLC DMC_SEND_COMMAND_BOLC Command Parameter(s) : BOLOMETER_COMMAND PP071420 Subsch. ID : 90 Det. descr. : SEND COMMAND TO BOL CONTROLLER	PC103420 8000000 <hex>	
	ET=+00.00.01 UT=+00.00.01	DMC_SET_BBID DMC_SET_BBID Command Parameter(s) : BUILDING_BLOCK_ID PP070420 Subsch. ID : 90 Det. descr. : SET BBID IN DMC	PC079420 42590004 <hex>	
	ET=+00.00.01 UT=+00.00.01	DMC_SEND_COMMAND_BOLC DMC_SEND_COMMAND_BOLC Command Parameter(s) : BOLOMETER_COMMAND PP071420 Subsch. ID : 90 Det. descr. : SEND COMMAND TO BOL CONTROLLER	PC103420 1023f <hex>	
	ET=+00.00.11 UT=+00.00.11	DMC_SEND_COMMAND_BOLC DMC_SEND_COMMAND_BOLC Command Parameter(s) : BOLOMETER_COMMAND PP071420 Subsch. ID : 90 Det. descr. : SEND COMMAND TO BOL CONTROLLER	PC103420 201a0 <hex>	
	ET=+00.00.11 UT=+00.00.11	DMC_SEND_COMMAND_BOLC DMC_SEND_COMMAND_BOLC Command Parameter(s) : BOLOMETER_COMMAND PP071420 Subsch. ID : 90 Det. descr. : SEND COMMAND TO BOL CONTROLLER	PC103420 10000 <hex>	
	ET=+00.00.11 UT=+00.00.11	DMC_SEND_COMMAND_BOLC DMC_SEND_COMMAND_BOLC Command Parameter(s) : BOLOMETER_COMMAND PP071420 Subsch. ID : 90 Det. descr. : SEND COMMAND TO BOL CONTROLLER	PC103420 20000 <hex>	

PACS_Phot_Cold_Startinputsignal_OBS
 File: H_COP_PAC_D305.xls
 Author: R. Biggins



Step No.	Time	Activity/Remarks	TC/TLM	Display/ Branch
	ET=+00.00.11 UT=+00.00.11	DMC_SET_BBID DMC_SET_BBID Command Parameter(s) : BUILDING_BLOCK_ID PP070420 Subsch. ID : 90 Det. descr. : SET BBID IN DMC	PC079420 425B0001 <hex>	
	ET=+00.00.31 UT=+00.00.31	DMC_SET_BBID DMC_SET_BBID Command Parameter(s) : BUILDING_BLOCK_ID PP070420 Subsch. ID : 90 Det. descr. : SET BBID IN DMC	PC079420 42590005 <hex>	
	ET=+00.00.01 UT=+00.00.01	DMC_SEND_COMMAND_BOLC DMC_SEND_COMMAND_BOLC Command Parameter(s) : BOLOMETER_COMMAND PP071420 Subsch. ID : 90 Det. descr. : SEND COMMAND TO BOL CONTROLLER	PC103420 c0000 <hex>	
	ET=+00.00.01 UT=+00.00.01	DMC_SEND_COMMAND_BOLC DMC_SEND_COMMAND_BOLC Command Parameter(s) : BOLOMETER_COMMAND PP071420 Subsch. ID : 90 Det. descr. : SEND COMMAND TO BOL CONTROLLER	PC103420 908fa <hex>	
		The following TCs stop the SPU ASW		
	ET=+00.00.01 UT=+00.00.01	SPUS_STOP_REDUCT_COMPR SPUS_STOP_REDUCT_COMPR Subsch. ID : 90 Det. descr. : STOP THE APPLICATION PROGRAM IN SPU_SWL	PC037400	
	ET=+00.00.01 UT=+00.00.01	SPUL_STOP_REDUCT_COMPR SPUL_STOP_REDUCT_COMPR Subsch. ID : 90 Det. descr. : STOP THE APPLICATION PROGRAM IN SPU_LWL	PC038390	

PACS_Phot_Cold_Startinputsignal_OBS
 File: H_COP_PAC_D305.xls
 Author: R. Biggins



Step No.	Time	Activity/Remarks	TC/TLM	Display/ Branch
	ET=+00.00.01 UT=+00.00.01	DMC_WRT_SPU_TRAN_MODE DMC_WRT_SPU_TRAN_MODE Command Parameter(s) : DMC_4_BYTES_WORDS_DATA PP067420 DMC_4_BYTES_WORDS_DATA PP067420 DMC_CHECKSUM PP066420 Subsch. ID : 90 Det. descr. : WRITE THE SPU TRASMISSION MODE	PC175420 0 <hex> 0 <hex> 313E <hex>	
	ET=+00.00.01 UT=+00.00.01	SPUS_RAW_CHAN_TRAN_MODE SPUS_RAW_CHAN_TRAN_MODE Command Parameter(s) : SPUS_OBS_MODE PP050400 SPUS_RCXNB PP051400 SPUS_RCX PP052400 Subsch. ID : 90 Det. descr. : RAW CHANNEL TRANSMISSION MODE FOR SPUS	PC035400 PHOT 3 <dec> 1 <dec>	
	ET=+00.00.01 UT=+00.00.01	SPUL_RAW_CHAN_TRAN_MODE SPUL_RAW_CHAN_TRAN_MODE Command Parameter(s) : SPUL_OBS_MODE PP032390 SPUL_RCXNB PP033390 SPUL_RCX PP034390 Subsch. ID : 90 Det. descr. : RAW CHANNEL TRANSMISSION MODE FOR SPUL	PC036390 PHOT 3 <dec> 1 <dec>	
		The following TCs are used to write the table of the photoconductors constants, which are relevant for the pre-processing step.		
	ET=+00.00.01 UT=+00.00.01	Execute Telecommand SPUS_WRT_DET_CST_PHOT Command Parameter(s) : SPUS_4_BYTES_WORDS_DATA PP055400 SPUS_4_BYTES_WORDS_DATA PP055400 SPUS_4_BYTES_WORDS_DATA PP055400 SPUS_4_BYTES_WORDS_DATA PP055400 SPUS_4_BYTES_WORDS_DATA PP055400 SPUS_4_BYTES_WORDS_DATA PP055400 SPUS_4_BYTES_WORDS_DATA PP055400 SPUS_4_BYTES_WORDS_DATA PP055400 SPUS_4_BYTES_WORDS_DATA PP055400 SPUS_4_BYTES_WORDS_DATA PP055400 SPUS_4_BYTES_WORDS_DATA PP055400 SPUS_4_BYTES_WORDS_DATA PP055400 SPUS_4_BYTES_WORDS_DATA PP055400	PC065400 0 <hex> 0 <hex> 3E8 <hex> 64 <hex> 1 <hex> 0 <hex> 0 <hex> 0 <hex> 0 <hex> 1 <hex> 0 <hex> 3 <hex>	

PACS_Phot_Cold_Startinputsignal_OBS
 File: H_COP_PAC_D305.xls
 Author: R. Biggins



Step No.	Time	Activity/Remarks	TC/TLM	Display/ Branch
	ET=+00.00.02 UT=+00.00.02	DMC_SEND_COMMAND_BOLC DMC_SEND_COMMAND_BOLC Command Parameter(s) : BOLOMETER_COMMAND PP071420 Subsch. ID : 90 Det. descr. : SEND COMMAND TO BOL CONTROLLER	PC103420 9010002 <hex>	
		<i>The following TCs stop the SPU ASW</i>		
	ET=+00.00.01 UT=+00.00.01	SPUS_STOP_REDUCT_COMPR SPUS_STOP_REDUCT_COMPR Subsch. ID : 90 Det. descr. : STOP THE APPLICATION PROGRAM IN SPU_SWL	PC037400	
	ET=+00.00.01 UT=+00.00.01	SPUL_STOP_REDUCT_COMPR SPUL_STOP_REDUCT_COMPR Subsch. ID : 90 Det. descr. : STOP THE APPLICATION PROGRAM IN SPU_LWL	PC038390	
	ET=+00.00.01 UT=+00.00.01	DMC_WRT_SPU_TRAN_MODE DMC_WRT_SPU_TRAN_MODE Command Parameter(s) : DMC_4_BYTES_WORDS_DATA PP067420 0 <hex> DMC_4_BYTES_WORDS_DATA PP067420 0 <hex> DMC_CHECKSUM PP066420 313E <hex> Subsch. ID : 90 Det. descr. : WRITE THE SPU TRASMISSION MODE	PC175420 0 <hex> 0 <hex> 313E <hex>	
	ET=+00.00.01 UT=+00.00.01	SPUS_RAW_CHAN_TRAN_MODE SPUS_RAW_CHAN_TRAN_MODE Command Parameter(s) : SPUS_OBS_MODE PP050400 PHOT SPUS_RCXNB PP051400 0 <dec> SPUS_RCX PP052400 1 <dec> Subsch. ID : 90 Det. descr. : RAW CHANNEL TRANSMISSION MODE FOR SPUS	PC035400 PHOT 0 <dec> 1 <dec>	
	ET=+00.00.01 UT=+00.00.01	SPUL_RAW_CHAN_TRAN_MODE SPUL_RAW_CHAN_TRAN_MODE Command Parameter(s) : SPUL_OBS_MODE PP032390 PHOT SPUL_RCXNB PP033390 0 <dec> SPUL_RCX PP034390 1 <dec> Subsch. ID : 90 Det. descr. : RAW CHANNEL TRANSMISSION MODE FOR SPUL	PC036390 PHOT 0 <dec> 1 <dec>	
		<i>The following TCs are used to write the table of the photoconductors constants, which are relevant for the pre-processing step.</i>		

PACS_Phot_Cold_Startinputsignal_OBS
 File: H_COP_PAC_D305.xls
 Author: R. Biggins



Step No.	Time	Activity/Remarks	TC/TLM	Display/ Branch
		SPUL_4_BYTES_WORDS_DATA PP037390 SPUL_4_BYTES_WORDS_DATA PP037390 SPUL_4_BYTES_WORDS_DATA PP037390 SPUL_4_BYTES_WORDS_DATA PP037390 SPUL_4_BYTES_WORDS_DATA PP037390 SPUL_4_BYTES_WORDS_DATA PP037390 SPUL_4_BYTES_WORDS_DATA PP037390 SPUL_4_BYTES_WORDS_DATA PP037390 SPUL_4_BYTES_WORDS_DATA PP037390 SPUL_4_BYTES_WORDS_DATA PP037390 SPUL_4_BYTES_WORDS_DATA PP037390 SPUL_4_BYTES_WORDS_DATA PP037390 SPUL_4_BYTES_WORDS_DATA PP037390 SPUL_CHECKSUM PP036390	0 <hex> 0 <hex> 0 <hex> 0 <hex> 0 <hex> 0 <hex> 0 <hex> 0 <hex> 0 <hex> 0 <hex> 0 <hex> 0 <hex> 0 <hex> 5F01 <hex>	
		<i>Subsch. ID : 90</i> Det. descr. : WRITE DETECTOR CONSTANTS FOR THE RED PHOTOMETER ARRAY		
	ET=+00.00.01 UT=+00.00.01	DPU_SEND_TIME <i>Subsch. ID : 90</i> Det. descr. : DPU SENDS THE TIME TO DEC/MEC	DPU_SEND_TIME PC007380	
	ET=+00.00.01 UT=+00.00.01	DMC_SET_TIME <i>Subsch. ID : 90</i> Det. descr. : SET THE TIME PREVIOUSLY WRITTEN BY THE WRITE TIME COMMAND	DMC_SET_TIME PC077420	
		The following TCs start the SPU ASW		
	ET=+00.00.01 UT=+00.00.01	SPUS_START_REDUCT_COMPR <i>Subsch. ID : 90</i> Det. descr. : START THE APPLICATION PROGRAM IN SPU_SWL	SPUS_START_REDUCT_COMPR PC039400	
	ET=+00.00.01 UT=+00.00.01	SPUL_START_REDUCT_COMPR <i>Subsch. ID : 90</i> Det. descr. : START THE APPLICATION PROGRAM IN SPU_LWL	SPUL_START_REDUCT_COMPR PC040390	
		The following TCs stop the SPU ASW		
	ET=+00.00.32 UT=+00.00.32	SPUS_STOP_REDUCT_COMPR <i>Subsch. ID : 90</i> Det. descr. : STOP THE APPLICATION PROGRAM IN SPU_SWL	SPUS_STOP_REDUCT_COMPR PC037400	

PACS_Phot_Cold_Startinputsignal_OBS
 File: H_COP_PAC_D305.xls
 Author: R. Biggins



Step No.	Time	Activity/Remarks	TC/TLM	Display/ Branch
	ET=+00.00.01 UT=+00.00.01	SPUL_STOP_REDUCT_COMPR Subsch. ID : 90 Det. descr. : STOP THE APPLICATION PROGRAM IN SPU_LWL	PC038390	
	ET=+00.00.01 UT=+00.00.01	DMC_WRT_SPU_TRAN_MODE Command Parameter(s) : DMC_4_BYTES_WORDS_DATA PP067420 DMC_4_BYTES_WORDS_DATA PP067420 DMC_CHECKSUM PP066420 Subsch. ID : 90 Det. descr. : WRITE THE SPU TRASMISSION MODE	PC175420 0 <hex> 0 <hex> 313E <hex>	
	ET=+00.00.01 UT=+00.00.01	SPUS_RAW_CHAN_TRAN_MODE Command Parameter(s) : SPUS_OBS_MODE PP050400 SPUS_RCXNB PP051400 SPUS_RCX PP052400 Subsch. ID : 90 Det. descr. : RAW CHANNEL TRANSMISSION MODE FOR SPUS	PC035400 PHOT 3 <dec> 1 <dec>	
	ET=+00.00.01 UT=+00.00.01	SPUL_RAW_CHAN_TRAN_MODE Command Parameter(s) : SPUL_OBS_MODE PP032390 SPUL_RCXNB PP033390 SPUL_RCX PP034390 Subsch. ID : 90 Det. descr. : RAW CHANNEL TRANSMISSION MODE FOR SPUL	PC036390 PHOT 3 <dec> 1 <dec>	
		The following TCs are used to write the table of the photoconductors constants, which are relevant for the pre-processing step.		
	ET=+00.00.01 UT=+00.00.01	Execute Telecommand Command Parameter(s) : SPUS_4_BYTES_WORDS_DATA PP055400 SPUS_4_BYTES_WORDS_DATA PP055400 SPUS_4_BYTES_WORDS_DATA PP055400 SPUS_4_BYTES_WORDS_DATA PP055400 SPUS_4_BYTES_WORDS_DATA PP055400 SPUS_4_BYTES_WORDS_DATA PP055400 SPUS_4_BYTES_WORDS_DATA PP055400 SPUS_4_BYTES_WORDS_DATA PP055400 SPUS_4_BYTES_WORDS_DATA PP055400 SPUS_4_BYTES_WORDS_DATA PP055400 SPUS_4_BYTES_WORDS_DATA PP055400 SPUS_4_BYTES_WORDS_DATA PP055400	PC065400 0 <hex> 0 <hex> 3E8 <hex> 64 <hex> 1 <hex> 0 <hex> 0 <hex> 0 <hex> 0 <hex> 1 <hex> 0 <hex> 3 <hex>	

PACS_Photo_Cold_Startinputsignal_OBS
 File: H_COP_PAC_D305.xls
 Author: R. Biggins



Step No.	Time	Activity/Remarks	TC/TLM	Display/ Branch
		SPUS_4_BYTES_WORDS_DATA PP055400 SPUS_4_BYTES_WORDS_DATA PP055400 SPUS_4_BYTES_WORDS_DATA PP055400 SPUS_4_BYTES_WORDS_DATA PP055400 SPUS_4_BYTES_WORDS_DATA PP055400 SPUS_4_BYTES_WORDS_DATA PP055400 SPUS_4_BYTES_WORDS_DATA PP055400 SPUS_4_BYTES_WORDS_DATA PP055400 SPUS_4_BYTES_WORDS_DATA PP055400 SPUS_4_BYTES_WORDS_DATA PP055400 SPUS_4_BYTES_WORDS_DATA PP055400 SPUS_4_BYTES_WORDS_DATA PP055400 SPUS_4_BYTES_WORDS_DATA PP055400 SPUS_4_BYTES_WORDS_DATA PP055400 SPUS_CHECKSUM PP054400	0 <hex> 0 <hex> 0 <hex> 0 <hex> 0 <hex> 0 <hex> 0 <hex> 0 <hex> 0 <hex> 0 <hex> 0 <hex> 0 <hex> 0 <hex> 0 <hex> 5F01 <hex>	
		Subsch. ID : 90 Det. descr. : WRITE DETECTOR CONSTANTS FOR THE BLUE PHOTOMETER ARRAY		
	ET+=00.00.01 UT+=00.00.01	Execute Telecommand SPUL_WRT_DET_CST_PHOT Command Parameter(s) : SPUL_4_BYTES_WORDS_DATA PP037390 SPUL_CHECKSUM PP036390	PC066390 0 <hex> 0 <hex> 3E8 <hex> 64 <hex> 1 <hex> 0 <hex> 0 <hex> 0 <hex> 0 <hex> 1 <hex> 0 <hex> 0 <hex> 0 <hex> 0 <hex> 0 <hex> 0 <hex> 0 <hex> 0 <hex> 0 <hex> 0 <hex> 0 <hex> 0 <hex> 0 <hex> 0 <hex> 0 <hex> 0 <hex> 0 <hex> 0 <hex> 0 <hex> 0 <hex> 5F01 <hex>	
		Subsch. ID : 90 Det. descr. : WRITE DETECTOR CONSTANTS FOR THE RED PHOTOMETER ARRAY		

PACS_Photo_Cold_Startinputsignal_OBS
 File: H_COP_PAC_D305.xls
 Author: R. Biggins



Step No.	Time	Activity/Remarks	TC/TLM	Display/ Branch
	ET=+00.00.02 UT=+00.00.02	DMC_SEND_COMMAND_BOLC DMC_SEND_COMMAND_BOLC Command Parameter(s) : BOLOMETER_COMMAND PP071420 Subsch. ID : 90 Det. descr. : SEND COMMAND TO BOL CONTROLLER	PC103420 9010001 <hex>	
	ET=+00.00.01 UT=+00.00.01	SPUS_STOP_REDUCT_COMPR Subsch. ID : 90 Det. descr. : STOP THE APPLICATION PROGRAM IN SPU_SWL	PC037400	
	ET=+00.00.01 UT=+00.00.01	SPUL_STOP_REDUCT_COMPR Subsch. ID : 90 Det. descr. : STOP THE APPLICATION PROGRAM IN SPU_LWL	PC038390	
	ET=+00.00.01 UT=+00.00.01	DMC_WRT_SPU_TRAN_MODE DMC_WRT_SPU_TRAN_MODE Command Parameter(s) : DMC_4_BYTES_WORDS_DATA PP067420 DMC_4_BYTES_WORDS_DATA PP067420 DMC_CHECKSUM PP066420 Subsch. ID : 90 Det. descr. : WRITE THE SPU TRASMISSION MODE	PC175420 0 <hex> 0 <hex> 313E <hex>	
	ET=+00.00.01 UT=+00.00.01	SPUS_RAW_CHAN_TRAN_MODE SPUS_RAW_CHAN_TRAN_MODE Command Parameter(s) : SPUS_OBS_MODE PP050400 SPUS_RCXNB PP051400 SPUS_RCX PP052400 Subsch. ID : 90 Det. descr. : RAW CHANNEL TRANSMISSION MODE FOR SPUS	PC035400 PHOT 0 <dec> 1 <dec>	
	ET=+00.00.01 UT=+00.00.01	SPUL_RAW_CHAN_TRAN_MODE SPUL_RAW_CHAN_TRAN_MODE Command Parameter(s) : SPUL_OBS_MODE PP032390 SPUL_RCXNB PP033390 SPUL_RCX PP034390 Subsch. ID : 90 Det. descr. : RAW CHANNEL TRANSMISSION MODE FOR SPUL	PC036390 PHOT 0 <dec> 1 <dec>	
		The following TCs are used to write the table of the photoconductors constants, which are relevant for the pre-processing step.		

PACS_Phot_Cold_Startinputsignal_OBS
 File: H_COP_PAC_D305.xls
 Author: R. Biggins



Step No.	Time	Activity/Remarks	TC/TLM	Display/ Branch
		SPUL_4_BYTES_WORDS_DATA PP037390 SPUL_4_BYTES_WORDS_DATA PP037390 SPUL_4_BYTES_WORDS_DATA PP037390 SPUL_4_BYTES_WORDS_DATA PP037390 SPUL_4_BYTES_WORDS_DATA PP037390 SPUL_4_BYTES_WORDS_DATA PP037390 SPUL_4_BYTES_WORDS_DATA PP037390 SPUL_4_BYTES_WORDS_DATA PP037390 SPUL_4_BYTES_WORDS_DATA PP037390 SPUL_4_BYTES_WORDS_DATA PP037390 SPUL_4_BYTES_WORDS_DATA PP037390 SPUL_4_BYTES_WORDS_DATA PP037390 SPUL_4_BYTES_WORDS_DATA PP037390 SPUL_CHECKSUM PP036390	0 <hex> 0 <hex> 0 <hex> 0 <hex> 0 <hex> 0 <hex> 0 <hex> 0 <hex> 0 <hex> 0 <hex> 0 <hex> 0 <hex> 0 <hex> 5F01 <hex>	
		<i>Subsch. ID : 90</i> Det. descr. : WRITE DETECTOR CONSTANTS FOR THE RED PHOTOMETER ARRAY		
	ET=+00.00.01 UT=+00.00.01	DPU_SEND_TIME <i>Subsch. ID : 90</i> Det. descr. : DPU SENDS THE TIME TO DEC/MEC	DPU_SEND_TIME PC007380	
	ET=+00.00.01 UT=+00.00.01	DMC_SET_TIME <i>Subsch. ID : 90</i> Det. descr. : SET THE TIME PREVIOUSLY WRITTEN BY THE WRITE TIME COMMAND	DMC_SET_TIME PC077420	
		The following TCs start the SPU ASW		
	ET=+00.00.01 UT=+00.00.01	SPUS_START_REDUCT_COMPR <i>Subsch. ID : 90</i> Det. descr. : START THE APPLICATION PROGRAM IN SPU_SWL	SPUS_START_REDUCT_COMPR PC039400	
	ET=+00.00.01 UT=+00.00.01	SPUL_START_REDUCT_COMPR <i>Subsch. ID : 90</i> Det. descr. : START THE APPLICATION PROGRAM IN SPU_LWL	SPUL_START_REDUCT_COMPR PC040390	
		The following TCs stop the SPU ASW		
	ET=+00.00.32 UT=+00.00.32	SPUS_STOP_REDUCT_COMPR <i>Subsch. ID : 90</i> Det. descr. : STOP THE APPLICATION PROGRAM IN SPU_SWL	SPUS_STOP_REDUCT_COMPR PC037400	

PACS_Phot_Cold_Startinputsignal_OBS
 File: H_COP_PAC_D305.xls
 Author: R. Biggins



Step No.	Time	Activity/Remarks	TC/TLM	Display/ Branch
	ET=+00.00.01 UT=+00.00.01	SPUL_STOP_REDUCT_COMPR Subsch. ID : 90 Det. descr. : STOP THE APPLICATION PROGRAM IN SPU_LWL	PC038390	
	ET=+00.00.01 UT=+00.00.01	DMC_WRT_SPU_TRAN_MODE Command Parameter(s) : DMC_4_BYTES_WORDS_DATA PP067420 DMC_4_BYTES_WORDS_DATA PP067420 DMC_CHECKSUM PP066420 Subsch. ID : 90 Det. descr. : WRITE THE SPU TRASMISSION MODE	PC175420 0 <hex> 0 <hex> 313E <hex>	
	ET=+00.00.01 UT=+00.00.01	SPUS_RAW_CHAN_TRAN_MODE Command Parameter(s) : SPUS_OBS_MODE PP050400 SPUS_RCXNB PP051400 SPUS_RCX PP052400 Subsch. ID : 90 Det. descr. : RAW CHANNEL TRANSMISSION MODE FOR SPUS	PC035400 PHOT 3 <dec> 1 <dec>	
	ET=+00.00.01 UT=+00.00.01	SPUL_RAW_CHAN_TRAN_MODE Command Parameter(s) : SPUL_OBS_MODE PP032390 SPUL_RCXNB PP033390 SPUL_RCX PP034390 Subsch. ID : 90 Det. descr. : RAW CHANNEL TRANSMISSION MODE FOR SPUL	PC036390 PHOT 3 <dec> 1 <dec>	
		<i>The following TCs are used to write the table of the photoconductors constants, which are relevant for the pre-processing step.</i>		
	ET=+00.00.01 UT=+00.00.01	Execute Telecommand Command Parameter(s) : SPUS_4_BYTES_WORDS_DATA PP055400 SPUS_4_BYTES_WORDS_DATA PP055400 SPUS_4_BYTES_WORDS_DATA PP055400 SPUS_4_BYTES_WORDS_DATA PP055400 SPUS_4_BYTES_WORDS_DATA PP055400 SPUS_4_BYTES_WORDS_DATA PP055400 SPUS_4_BYTES_WORDS_DATA PP055400 SPUS_4_BYTES_WORDS_DATA PP055400 SPUS_4_BYTES_WORDS_DATA PP055400 SPUS_4_BYTES_WORDS_DATA PP055400 SPUS_4_BYTES_WORDS_DATA PP055400 SPUS_4_BYTES_WORDS_DATA PP055400	SPUS_WRT_DET_CST_PHOT PC065400 0 <hex> 0 <hex> 3E8 <hex> 64 <hex> 1 <hex> 0 <hex> 0 <hex> 0 <hex> 0 <hex> 1 <hex> 0 <hex> 0 <hex> 3 <hex>	

PACS_Phot_Cold_Startinputsignal_OBS
 File: H_COP_PAC_D305.xls
 Author: R. Biggins



Step No.	Time	Activity/Remarks	TC/TLM	Display/ Branch
	ET=+00.00.02 UT=+00.00.02	DMC_SEND_COMMAND_BOLC DMC_SEND_COMMAND_BOLC Command Parameter(s) : BOLOMETER_COMMAND PP071420 Subsch. ID : 90 Det. descr. : SEND COMMAND TO BOL CONTROLLER	PC103420 9010000 <hex>	
		<i>The following TCs stop the SPU ASW</i>		
	ET=+00.00.01 UT=+00.00.01	SPUS_STOP_REDUCT_COMPR SPUS_STOP_REDUCT_COMPR Subsch. ID : 90 Det. descr. : STOP THE APPLICATION PROGRAM IN SPU_SWL	PC037400	
	ET=+00.00.01 UT=+00.00.01	SPUL_STOP_REDUCT_COMPR SPUL_STOP_REDUCT_COMPR Subsch. ID : 90 Det. descr. : STOP THE APPLICATION PROGRAM IN SPU_LWL	PC038390	
	ET=+00.00.01 UT=+00.00.01	DMC_WRT_SPU_TRAN_MODE DMC_WRT_SPU_TRAN_MODE Command Parameter(s) : DMC_4_BYTES_WORDS_DATA PP067420 0 <hex> DMC_4_BYTES_WORDS_DATA PP067420 0 <hex> DMC_CHECKSUM PP066420 313E <hex> Subsch. ID : 90 Det. descr. : WRITE THE SPU TRASMISSION MODE	PC175420 0 <hex> 0 <hex> 313E <hex>	
	ET=+00.00.01 UT=+00.00.01	SPUS_RAW_CHAN_TRAN_MODE SPUS_RAW_CHAN_TRAN_MODE Command Parameter(s) : SPUS_OBS_MODE PP050400 PHOT SPUS_RCXNB PP051400 0 <dec> SPUS_RCX PP052400 1 <dec> Subsch. ID : 90 Det. descr. : RAW CHANNEL TRANSMISSION MODE FOR SPUS	PC035400 PHOT 0 <dec> 1 <dec>	
	ET=+00.00.01 UT=+00.00.01	SPUL_RAW_CHAN_TRAN_MODE SPUL_RAW_CHAN_TRAN_MODE Command Parameter(s) : SPUL_OBS_MODE PP032390 PHOT SPUL_RCXNB PP033390 0 <dec> SPUL_RCX PP034390 1 <dec> Subsch. ID : 90 Det. descr. : RAW CHANNEL TRANSMISSION MODE FOR SPUL	PC036390 PHOT 0 <dec> 1 <dec>	
		<i>The following TCs are used to write the table of the photoconductors constants, which are relevant for the pre-processing step.</i>		

PACS_Phot_Cold_Startinputsignal_OBS
 File: H_COP_PAC_D305.xls
 Author: R. Biggins



Step No.	Time	Activity/Remarks	TC/TLM	Display/ Branch
		SPUL_4_BYTES_WORDS_DATA PP037390 SPUL_4_BYTES_WORDS_DATA PP037390 SPUL_4_BYTES_WORDS_DATA PP037390 SPUL_4_BYTES_WORDS_DATA PP037390 SPUL_4_BYTES_WORDS_DATA PP037390 SPUL_4_BYTES_WORDS_DATA PP037390 SPUL_4_BYTES_WORDS_DATA PP037390 SPUL_4_BYTES_WORDS_DATA PP037390 SPUL_4_BYTES_WORDS_DATA PP037390 SPUL_4_BYTES_WORDS_DATA PP037390 SPUL_4_BYTES_WORDS_DATA PP037390 SPUL_4_BYTES_WORDS_DATA PP037390 SPUL_4_BYTES_WORDS_DATA PP037390 SPUL_4_BYTES_WORDS_DATA PP037390 SPUL_CHECKSUM PP036390	0 <hex> 0 <hex> 0 <hex> 0 <hex> 0 <hex> 0 <hex> 0 <hex> 0 <hex> 0 <hex> 0 <hex> 0 <hex> 0 <hex> 0 <hex> 0 <hex> 5F01 <hex>	
		<i>Subsch. ID : 90</i> Det. descr. : WRITE DETECTOR CONSTANTS FOR THE RED PHOTOMETER ARRAY		
	ET=+00.00.01 UT=+00.00.01	DPU_SEND_TIME <i>Subsch. ID : 90</i> Det. descr. : DPU SENDS THE TIME TO DEC/MEC	DPU_SEND_TIME PC007380	
	ET=+00.00.01 UT=+00.00.01	DMC_SET_TIME <i>Subsch. ID : 90</i> Det. descr. : SET THE TIME PREVIOUSLY WRITTEN BY THE WRITE TIME COMMAND	DMC_SET_TIME PC077420	
		The following TCs start the SPU ASW		
	ET=+00.00.01 UT=+00.00.01	SPUS_START_REDUCT_COMPR <i>Subsch. ID : 90</i> Det. descr. : START THE APPLICATION PROGRAM IN SPU_SWL	SPUS_START_REDUCT_COMPR PC039400	
	ET=+00.00.01 UT=+00.00.01	SPUL_START_REDUCT_COMPR <i>Subsch. ID : 90</i> Det. descr. : START THE APPLICATION PROGRAM IN SPU_LWL	SPUL_START_REDUCT_COMPR PC040390	
4		Test verification		Next Step: 5
		NOTE: Test verification is primarily done by the ICC		
		Verify: the following parameter is incrementing by 480 every 2 seconds		
		Verify Telemetry DM_BOL_REC_PAC PM038420	incrementing	AND=ZAZ8W999

PACS_Phot_Cold_Startinputsignal_OBS
 File: H_COP_PAC_D305.xls
 Author: R. Biggins



Step No.	Time	Activity/Remarks	TC/TLM	Display/ Branch
		Verify: the following parameters have a non-zero value		
		Verify Telemetry BOL_VDDPRO_BUB1 PM236410	<> 0.0 V	AND=ZAZ8W999
		Verify Telemetry BOL_VDDPRO_BUB2 PM266410	<> 0.0001 V	AND=ZAZ8W999
		Verify Telemetry BOL_VDDPRO_BUB3 PM296410	<> 0.0000 V	AND=ZAZ8W999
		Verify Telemetry BOL_VDDPRO_BUB4 PM326410	<> 0.0000 V	AND=ZAZ8W999
		Verify Telemetry BOL_VDDPRO_BUR1 PM356410	<> 0.0000 V	AND=ZAZ8W999
		Verify Telemetry BOL_VDDPRO_BUR2 PM386410	<> -0.0 V	AND=ZAZ8W999
		Verify Telemetry BOL_VDDPRO_CLB1 PM229410	<> 0.0000 V	AND=ZAZ8W999
		Verify Telemetry BOL_VDDPRO_CLB2 PM259410	<> 0.0000 V	AND=ZAZ8W999
		Verify Telemetry BOL_VDDPRO_CLB3 PM289410	<> 0.0001 V	AND=ZAZ8W999
		Verify Telemetry BOL_VDDPRO_CLB4 PM319410	<> -0.0001 V	AND=ZAZ8W999
		Verify Telemetry BOL_VDDPRO_CLR1 PM349410	<> 0.0000 V	AND=ZAZ8W999
		Verify Telemetry BOL_VDDPRO_CLR2 PM379410	<> -0.0001 V	AND=ZAZ8W999
		Verify Telemetry BOL_GND_BU_B_1 PM230410	<> 0.0000 V	AND=ZAZ8W999
		Verify Telemetry BOL_GND_BU_B_2 PM260410	<> -0.0001 V	AND=ZAZ8W999
		Verify Telemetry BOL_GND_BU_B_3 PM290410	<> 0.0001 V	AND=ZAZ8W999
		Verify Telemetry BOL_GND_BU_B_4 PM320410	<> 0.0000 V	AND=ZAZ8W999
		Verify Telemetry BOL_GND_BU_R_1 PM350410	<> 0.0000 V	AND=ZAZ8W999
		Verify Telemetry BOL_GND_BU_R_2 PM380410	<> 0.0000 V	AND=ZAZ8W999
		Verify Telemetry BOL_PWR_ANA_P_1 PM242410	<> 0.0000 V	AND=ZAZ8W999

PACS_Phot_Cold_Startinputsignal_OBS
 File: H_COP_PAC_D305.xls
 Author: R. Biggins



Step No.	Time	Activity/Remarks	TC/TLM	Display/ Branch
		Verify Telemetry BOL_PWR_ANA_P_2 PM272410	<> 0.0000 V	AND=ZAZ8W999
		Verify Telemetry BOL_PWR_ANA_P_3 PM302410	<> 0.0000 V	AND=ZAZ8W999
		Verify Telemetry BOL_PWR_ANA_P_4 PM332410	<> 0.0000 V	AND=ZAZ8W999
		Verify Telemetry BOL_PWR_ANA_P_5 PM362410	<> 0.0000 V	AND=ZAZ8W999
		Verify Telemetry BOL_PWR_ANA_P_6 PM392410	<> 0.0000 V	AND=ZAZ8W999
5		Set default variables		Next Step: END
	ET=+00.00.01 UT=+00.00.01	DMC_SET_OBSID DMC_SET_OBSID Command Parameter(s) : OBSERVATION_ID PP069420 TC Control Flags : GBM IL DSE --Y -- -- Subsch. ID : 90 Det. descr. : SET OBSID IN DMC	PC078420 00000000 <hex>	
	ET=+00.00.00 UT=+00.00.00	DMC_SET_BBID DMC_SET_BBID Command Parameter(s) : BUILDING_BLOCK_ID PP070420 Subsch. ID : 90 Det. descr. : SET BBID IN DMC	PC079420 40000000 <hex>	
		Verify Telemetry DM_OBSID PM028420	= 0 <hex>	AND=ZAZ8W999
		Verify Telemetry DM_BBID PM029420	= 40000000 <hex>	AND=ZAZ8W999
End of Procedure				