

SpectroscopytoNonPrime_OBS
 File: H_COP_PAC_D204.xls
 Author: R. Biggins



Procedure Summary

Objectives

The objective of this procedure is to return PACS to Safe Mode after completion of the Ge:Ga detector chain tests

Based on procedure:
 SpectroscopytoNonPrime_OBS (v1)

Summary of Constraints

This procedure should be executed as part of the Short Functional Test (HeII conditions)
 This procedure may also be executed on PACS request

Spacecraft Configuration

Start of Procedure

PACS in NO_PRIME (SAFE) mode

End of Procedure

PACS in NO_PRIME (SAFE) mode

Reference File(s)

Input Command Sequences

Output Command Sequences

HCPD204

Referenced Displays

ANDs **GRDs** **SLDs**
 ZAZ98999

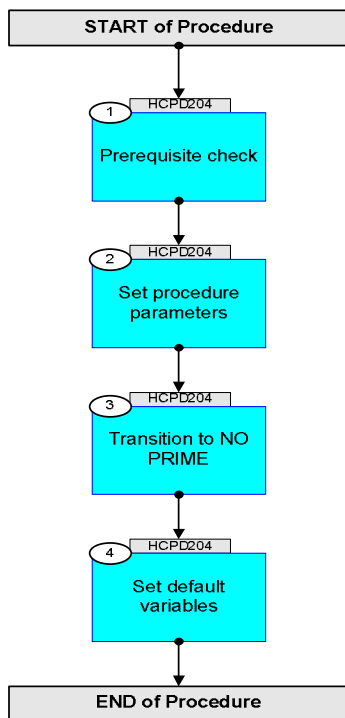
Configuration Control Information

DATE	FOP ISSUE	VERSION	MODIFICATION DESCRIPTION	AUTHOR	SPR REF
15/08/08		1	Created	R. Biggins	
14/11/08	2	2	Updates due to initial testing - New step (1) added for prerequisite check - Initial OBSID value changed to FP	R. Biggins	
15/04/09	2.3	2.01	Validation : Final updates before flight - Summary updated - TC flags updated	R. Biggins	

SpectroscopytoNonPrime_OBS
File: H_COP_PAC_D204.xls
Author: R. Biggins



Procedure Flowchart Overview



SpectroscopytoNonPrime_OBS
 File: H_COP_PAC_D204.xls
 Author: R. Biggins



Step No.	Time	Activity/Remarks	TC/TLM	Display/ Branch
	ET=+00.00.00 UT=+00.00.00	DMC_DISABLE_BB_2_CONT DMC_DISABLE_BB_2_CONT Subsch. ID : 90 Det. descr. : DISABLE BB2 CONTROLLER	PC209420	
	ET=+00.00.01 UT=+00.00.01	DMC_SWOF_BB_2_CONT DMC_SWOF_BB_2_CONT Subsch. ID : 90 Det. descr. : SWITCH OFF BLACK BODY 2 CONTROLLER	PC143420	
		Sending the following TCs will deactivate the chopper servo unit and disconnect chopper from amplifier (connect damping resistor)		
	ET=+00.00.01 UT=+00.00.01	DMC_DISABLE_CHOP_CONT DMC_DISABLE_CHOP_CONT Subsch. ID : 90 Det. descr. : DISABLE CHOPPER CONTROLLER	PC122420	
	ET=+00.00.01 UT=+00.00.01	DMC_SWOF_CHOP_CONT DMC_SWOF_CHOP_CONT Subsch. ID : 90 Det. descr. : SWITCH OFF CHOPPER CONTROLLER	PC120420	
		Sending the following TCs will deactivate the grating servo unit and switch off the grating power supply (Drive + Inductosyn)		
	ET=+00.00.01 UT=+00.00.01	DMC_DISABLE_GRAT_CONT DMC_DISABLE_GRAT_CONT Subsch. ID : 90 Det. descr. : DISABLE GRATING CONTROLLER	PC111420	
	ET=+00.00.00 UT=+00.00.00	DMC_SWOF_GRAT_CONT DMC_SWOF_GRAT_CONT Subsch. ID : 90 Det. descr. : SWITCH OFF GRATING CONTROLLER	PC109420	
		Sending the following TCs will stop the SPU ASW		
	ET=+00.00.01 UT=+00.00.01	SPUS_STOP_REDUCT_COMPR SPUS_STOP_REDUCT_COMPR Subsch. ID : 90 Det. descr. : STOP THE APPLICATION PROGRAM IN SPU_SWL	PC037400	
	ET=+00.00.00 UT=+00.00.00	SPUL_STOP_REDUCT_COMPR SPUL_STOP_REDUCT_COMPR Subsch. ID : 90 Det. descr. : STOP THE APPLICATION PROGRAM IN SPU_LWL	PC038390	

SpectroscopytoNonPrime_OBS
 File: H_COP_PAC_D204.xls
 Author: R. Biggins



Step No.	Time	Activity/Remarks	TC/TLM	Display/ Branch
		Sending the following TCs will stop forwarding data from the red and Blue DEC receivers to the Packet Encoder		
	ET=+00.00.01 UT=+00.00.01	DMC_WRT_B_DEC_REC_OPT Command Parameter(s) : DMC_4_BYTES_WORDS_DATA PP067420 DMC_CHECKSUM PP066420 Subsch. ID : 90 Det. descr. : WRITE THE BLUE DEC RECEIVER OPTIONS	PC170420 4 <hex> C444 <hex>	
	ET=+00.00.01 UT=+00.00.01	DMC_WRT_R_DEC_REC_OPT Command Parameter(s) : DMC_4_BYTES_WORDS_DATA PP067420 DMC_CHECKSUM PP066420 Subsch. ID : 90 Det. descr. : WRITE THE RED DEC RECEIVER OPTIONS	PC171420 4 <hex> C444 <hex>	
		Sending the following TCs will switch off detector array power-supply for the Red and Blue DEC		
	ET=+00.00.01 UT=+00.00.01	DMC_SWOF_R_SPEC Subsch. ID : 90 Det. descr. : SWITCH OFF RED SPECTROMETER ARRAY POWER	PC092420	
	ET=+00.00.01 UT=+00.00.01	DMC_SWOF_B_SPEC Subsch. ID : 90 Det. descr. : SWITCH OFF BLUE SPECTROMETER ARRAY POWER	PC085420	
		Sending the following TCs will switch off the Red and Blue DEC electronic power supply		
	ET=+00.00.01 UT=+00.00.01	DMC_SWOF_R_DEC Subsch. ID : 90 Det. descr. : SWITCH OFF RED DEC POWER	PC090420	
	ET=+00.00.01 UT=+00.00.01	DMC_SWOF_B_DEC Subsch. ID : 90 Det. descr. : SWITCH OFF BLUE DEC POWER	PC083420	
		Sending the following TC will return PACS to SAFE (NO PRIME) mode		

SpectroscopytoNonPrime_OBS
 File: H_COP_PAC_D204.xls
 Author: R. Biggins



Step No.	Time	Activity/Remarks	TC/TLM	Display/ Branch
	ET=+00.00.01 UT=+00.00.01	DPU_SET_HK_LIST DPU_SET_HK_LIST Command Parameter(s) : HK_PACKET_ID PP005380 SPU_ARRAY PP025380 Subsch. ID : 90 Det. descr. : SET THE PREDIFINED LIST OF HK VALUES FOR THE HK PACKET	PC003380 NO_PRIME BOTH Array	
		Verify Telemetry DP_TM_RATE PM049380	= NO PRIME	AND=ZAZ98999
4		Set default variables		Next Step: END
	ET=+00.00.01 UT=+00.00.01	DMC_SET_OBSID DMC_SET_OBSID Command Parameter(s) : OBSERVATION_ID PP069420 TC Control Flags : GBM IL DSE --Y -- -- Subsch. ID : 90 Det. descr. : SET OBSID IN DMC	PC078420 00000000 <hex>	
	ET=+00.00.00 UT=+00.00.00	DMC_SET_BBID DMC_SET_BBID Command Parameter(s) : BUILDING_BLOCK_ID PP070420 Subsch. ID : 90 Det. descr. : SET BBID IN DMC	PC079420 40000000 <hex>	
		Verify Telemetry DM_OBSID PM028420	= 00000000 <hex>	AND=ZAZ98999
		Verify Telemetry DM_BBID PM029420	= 40000000 <hex>	AND=ZAZ98999
End of Procedure				