

HIFI Switch On Redundant
 File: H_COP_HIF_SWON.xls
 Author: R. Biggins



Procedure Summary

Objectives

This is a high-level procedure covering the switch on of the REDUNDANT HIFI units into Standby0 mode

Summary of Constraints

RT Science (VC1) is NOT required for this activity

Spacecraft Configuration

Start of Procedure

HIFI is OFF

End of Procedure

HIFI is in Standby0 mode
 - RED OOL on TM parameter HM258194 (HL_MODE_S)

Reference File(s)

Input Command Sequences

Output Command Sequences

Referenced Displays

ANDs GRDs SLDs

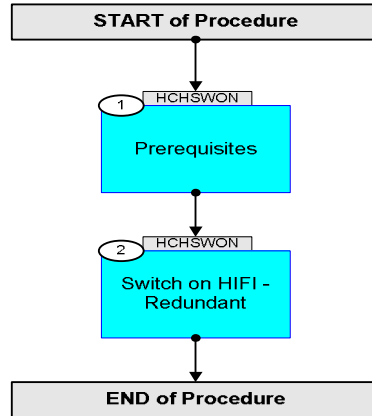
Configuration Control Information

DATE	FOP ISSUE	VERSION	MODIFICATION DESCRIPTION	AUTHOR	SPR REF
09/04/09	2.3	1	Created	R. Biggins	
05/05/09	2.4	1.01	Validation : Procedure H_FCP_HIF_COBS procedure added	R. Biggins	
25/11/09	3	2	Updates due to Prime unit failure resulting in new operation scheme - Updated to switch on redundant units - End of procedure configuration updated	R. Biggins	

HIFI Switch On Redundant
File: H_COP_HIF_SWON.xls
Author: R. Biggins



Procedure Flowchart Overview



HIFI Switch On Redundant
 File: H_COP_HIF_SWON.xls
 Author: R. Biggins



Step No.	Time	Activity/Remarks	TC/TLM	Display/ Branch
Beginning of Procedure				
<p>TC Seq. Name : HCHSWON (Switch ON)</p> <p>TimeTag Type: Sub Schedule ID:</p> <p style="text-align: center;">□</p>				
1		Prerequisites		Next Step: 2
1.1		Verify HSC/ICC inputs		□
		Verify that the following inputs have been supplied by the HCS/ICC:		
		FP: OBS_ID (2 required) DPU_PRTN [= 1] CONTEXT [= OPEN] CHOPPER [= 0.0mA] Information: ICU Software Version/Revision/Patch		
2		Switch on HIFI - Redundant		Next Step: END
		Please execute the following procedures and in the defined order. Duration ~40 minutes		
		PROCEDURE: H_FCP_HIF_RION [HFHRION] FP: OBS_ID DPU_PRTN [= 1] Information: ICU Software Version/Revision/Patch		
		PROCEDURE: H_FCP_HIF_COBS [HFHCOBS] FP: OBS_ID Information: ICU Software Version/Revision/Patch		
		PROCEDURE: H_FCP_HIF_RSON [HFHRSON] FP: OBS_ID CONTEXT [= OPEN] CHOPPER [= 0.0mA]		
End of Procedure				