

CDMS Health checks  
 File: H\_COP\_DHS\_0110.xls  
 Author: cmevi-hp



## Procedure Summary

### Objectives

This procedure is intended to perform CDMS Health checks during Commissioning Phase

### Summary of Constraints

TM available bit rate must be at least 150 kbit/s

### Spacecraft Configuration

**Start of Procedure**

Type Pre-condition Here

**End of Procedure**

Type Post-condition Here

### Reference File(s)

**Input Command Sequences**

**Output Command Sequences**

### Referenced Displays

**ANDs      GRDs      SLDs**

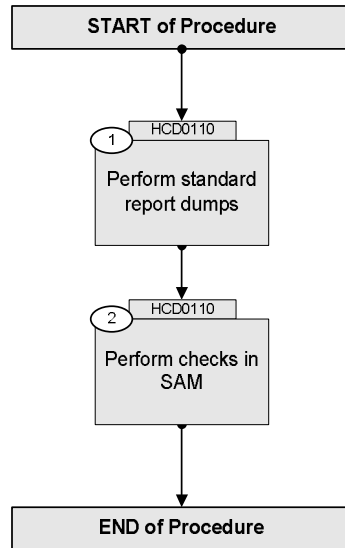
### Configuration Control Information

| DATE     | FOP ISSUE | VERSION | MODIFICATION DESCRIPTION | AUTHOR   | SPR REF |
|----------|-----------|---------|--------------------------|----------|---------|
| 24/02/09 | 2.1       | 1       | Created                  | cmevi-hp |         |

CDMS Health checks  
File: H\_COP\_DHS\_0110.xls  
Author: cmevi-hp



## Procedure Flowchart Overview



CDMS Health checks  
 File: H\_COP\_DHS\_0110.xls  
 Author: cmevi-hp



| Step No.   | Time | Activity/Remarks   | TC/TLM | Display/ Branch   |
|--|------|--|--------|-------------------|
| <b>Beginning of Procedure</b>  |      |  |        |                   |
| <p><i>TC Seq. Name :HCD0110 (CDMS Health checks)</i></p> <p><i>TimeTag Type:</i><br/> <i>Sub Schedule ID:</i></p> <p style="text-align: center;">□</p> |      |  |        |                   |
| 1  |      | <i>Perform standard report dumps</i>   |        | Next Step:<br>2   |
|  |      | Execute Procedure:<br><b>H_FCP_DHS_1030</b><br><b>CDMU OBSW data acquisition</b>                       |        |                   |
| 2  |      | <i>Perform checks in SAM</i>   |        | Next Step:<br>END |
|  |      | Execute Procedure:<br><b>H_FCP_DHS_SACK</b><br><b>CDMU checks in sun acquisition mode after launch</b> |        |                   |
| <b>End of Procedure</b>  |      |  |        |                   |