

ACMS STR2 Memory Dump
 File: H_COP_AOC_7153.xls
 Author: lstefanov-hp



Procedure Summary

Objectives

This procedure is used to perform STR2 memory dumps during Herschel commissioning.

The procedure covers the following memory devices:

- STR2 EEPROM
- STR2 RAM

Summary of Constraints

CDMU in Operational Mode
 - ACC in Operational Mode
 - STR NOT in INI Mode

Spacecraft Configuration

Start of Procedure

CDMU in Operational Mode
 - ACC in Operational Mode
 - STR NOT in INI Mode

End of Procedure

Same as start except:
 - STR2 memory dumps executed

Reference File(s)

Input Command Sequences

Output Command Sequences

Referenced Displays

ANDs GRDs SLDs
 AA01X109

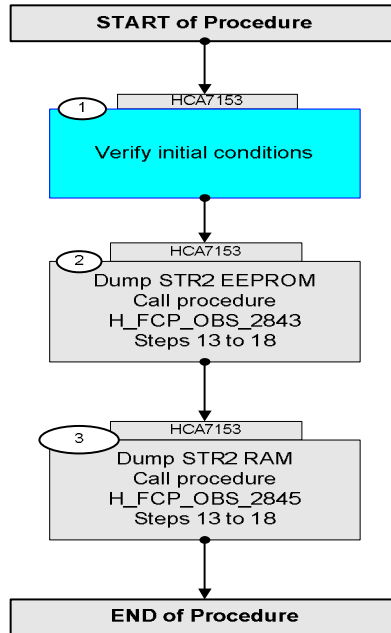
Configuration Control Information

DATE	FOP ISSUE	VERSION	MODIFICATION DESCRIPTION	AUTHOR	SPR REF
25/03/09	2.2	1	Created	t.loureiro-hp	
03/04/09		2	1. added current step 1 for initial conditions verification 2. current step 2 updated: call to H_FCP_OBS_2810 replaced by call to H_FCP_OBS_2843	lstefanov-hp	
03/04/09		3	1. TC Seq. name and description updated	lstefanov-hp	
08/04/09	2.3	4	1. added current step 1 for initial conditions verification 2. current step 2 updated: call to H_FCP_OBS_2810 replaced by call to H_FCP_OBS_2843	lstefanov-hp	

ACMS STR2 Memory Dump
File: H_COP_AOC_7153.xls
Author: lstefanov-hp



Procedure Flowchart Overview



ACMS STR2 Memory Dump File: H_COP_AOC_7153.xls Author: lstefanov-hp	 
---	--

Step No.	Time	Activity/Remarks	TC/TLM	Display/ Branch	AIT Comment
Beginning of Procedure					
HCA7153		TC Seq. Name :HCA7153 (STR2 Mem Dmp) STR2 Memory Dumps TimeTag Type: Sub Schedule ID: <input type="checkbox"/>			
1		Verify initial conditions		Next Step: 2	
		Check: - CDMU in Operational Mode - ACC in Operational Mode - STR1 NOT in INI Mode			
		Note: In ACMS mode in which the STR data are used for attitude determination, the STR cannot be in INI mode without triggering FDIR. The procedure can, however be executed also in SAM, in which there is no constraint on the STR mode so that explicit check is necessary to make sure that the download commands will not be rejected by the STR.			
		CDMU SOE to confirm CDMU mode			
		AOCS SOE to confirm ACC and STR mode			
		Note: STR Main telemetry is part of the essential and mode telemetry packets. If not configured as MAIN, a diagnostic telemetry packet has to be enabled in order to verify the status of the physical unit. This is executed in calling procedure H_SVT_AOC_4S51 or H_SVT_AOC_4S52.			
		Verify Telemetry STRM Mode AEX04001 <> Initialisation		AND=AA01X109	
		OR			
		Verify Telemetry Operating Mode AMX12074 <> Initialisation		AND=AA01X109	
2		Dump STR2 EEPROM Call procedure H_FCP_OBS_2843 Steps 13 to 18 type: [Proc]		Next Step: 3	
		<u>Execute steps 13 to 18</u> of procedure H_FCP_OBS_2843 (TC Sequence OFCP284M)			
		H_FCP_OBS_2843 Update STR EEPROM ground image from memory dump			
3		Dump STR2 RAM Call procedure H_FCP_OBS_2845 Steps 13 to 18 type: [Proc]		Next Step: END	
		<u>Execute steps 13 to 18</u> of procedure H_FCP_OBS_2845 (TC Sequence OFCP284W)			

ACMS STR2 Memory Dump File: H_COP_AOC_7153.xls Author: lstefanov-hp	 
---	--

Step No.	Time	Activity/Remarks	TC/TLM	Display/ Branch	AIT Comment
		H_FCP_OBS_2845 Update STR RAM ground image from memory dump			
End of Sequence					
End of Procedure					