

R O S E T T A
FLIGHT REPORTS
of RPC-MAG

RO-IGEP-TR-0018

Issue: 0 Revision: 1

April 12, 2007

Report of the
45P/Honda-Mrkos-Pajdusakova
Tail Encounter

Time period: July 04. - July 08., 2006

Andrea Diedrich
Karl-Heinz Glassmeier
Ingo Richter
Institut für Geophysik und extraterrestrische Physik
Technische Universität Braunschweig
Mendelssohnstraße 3, 38106 Braunschweig
Germany

<h1 style="margin: 0;">R O S E T T A</h1>	Document: RO-IGEP-TR-0018 Issue: 0 Revision: 1 Date: April 12, 2007 Page: I
IGEP Institut für Geophysik u. extraterr. Physik Technische Universität Braunschweig	

Contents

1	Summary	1
2	July 4, 2006	1
3	July 5, 2006	9
4	July 6, 2006	17
5	July 7, 2006	25
6	July 8, 2006	33

R O S E T T A	Document: RO-IGEP-TR-0018 Issue: 0 Revision: 1 Date: April 12, 2007 Page: 1
IGEP Institut für Geophysik u. extraterr. Physik Technische Universität Braunschweig	

1 Summary

This document describes the observation of the tail of comet 45P/Honda-Mrkos-Pajdusakova. RPC-MAG was switched on at 00:02:43 on July 4, 2006 and switched off at 23:54 on July 8, 2006.

The magnetometer worked flawlessly. The operating temperature of the sensors was about -109°C . For the first time during the ROSETTA mission the OB and IB sensor showed a nearly perfect synchronous run for 5 days after reaching the thermal equilibrium about 12 hours after switch on.

RPCMAG was operated in normal mode (SID2) for all the time. There is no impact of the reaction wheels to be seen in the magnetic field data.

The magnetic field data are highly structured. A first quick view analysis revealed many events that appear also in the LAP data. Therefore, an in depth analysis of MAG and LAP data (or even more instruments) seems to be a promising task.

To be completed

2 July 4, 2006

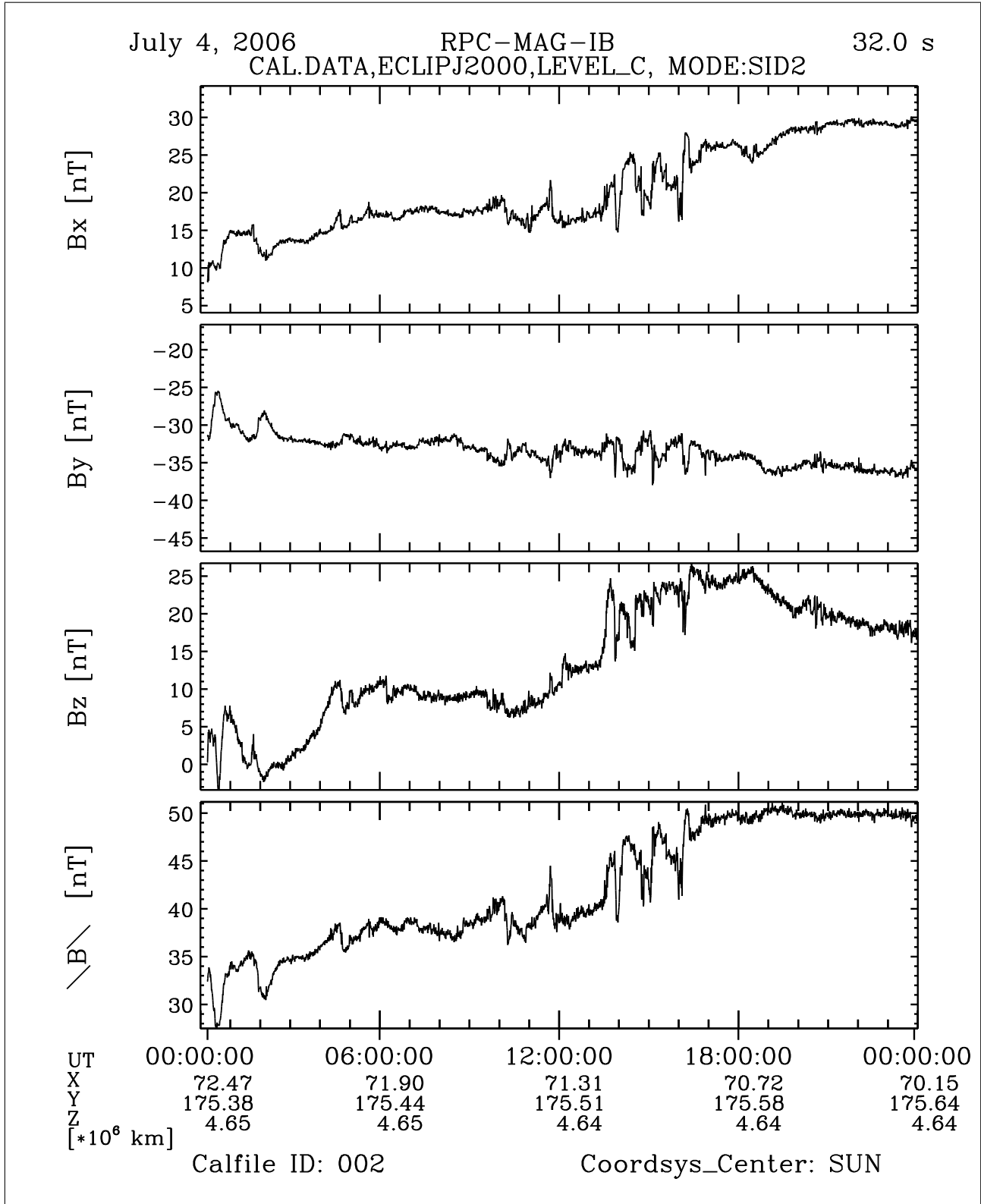


Figure 1: File: RPCMAG060704T0014_CLC_IB_M2_T0000_2400_002

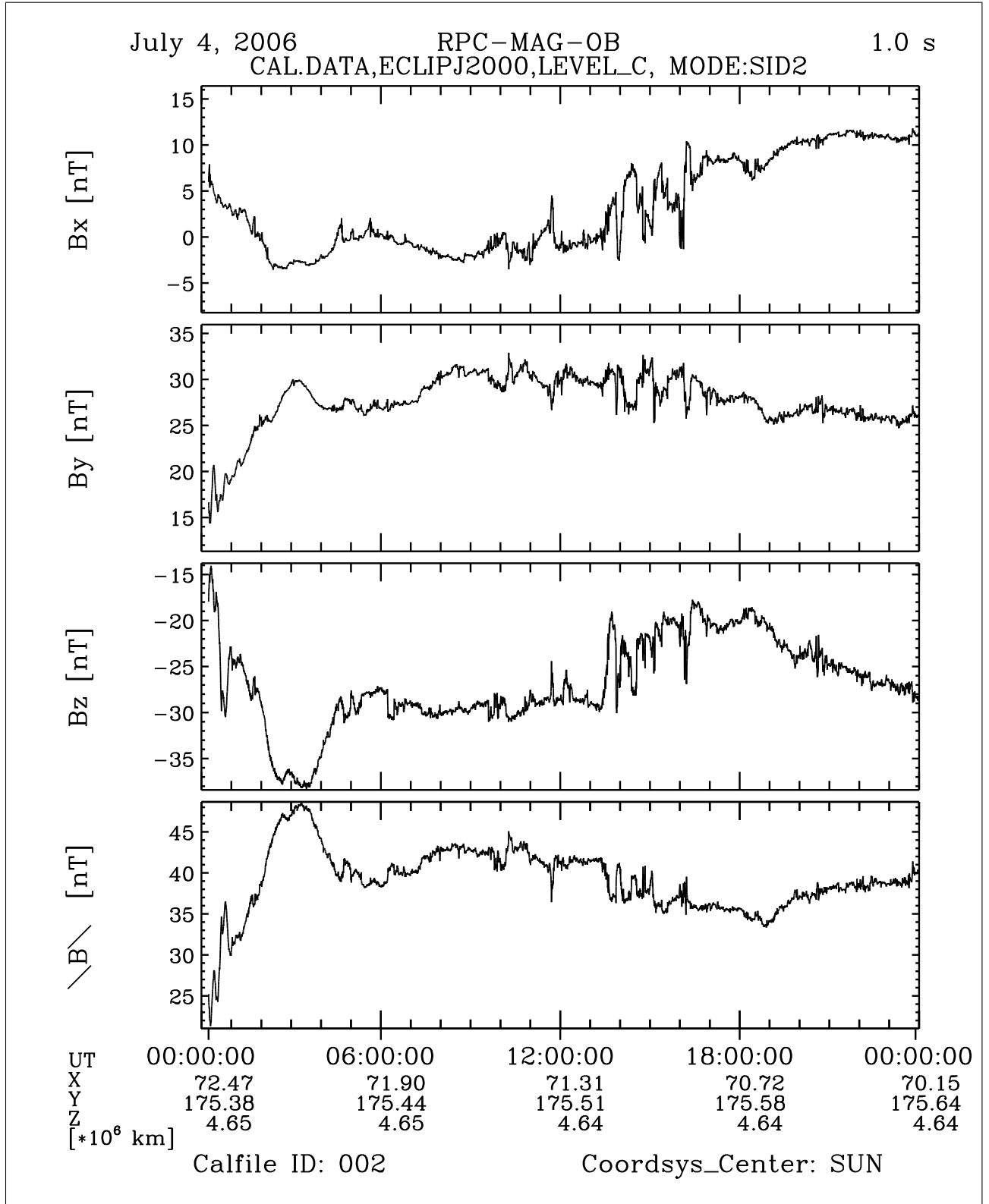


Figure 2: File: RPCMAG060704T0014_CLC_OB_M2_T0000_2400_002

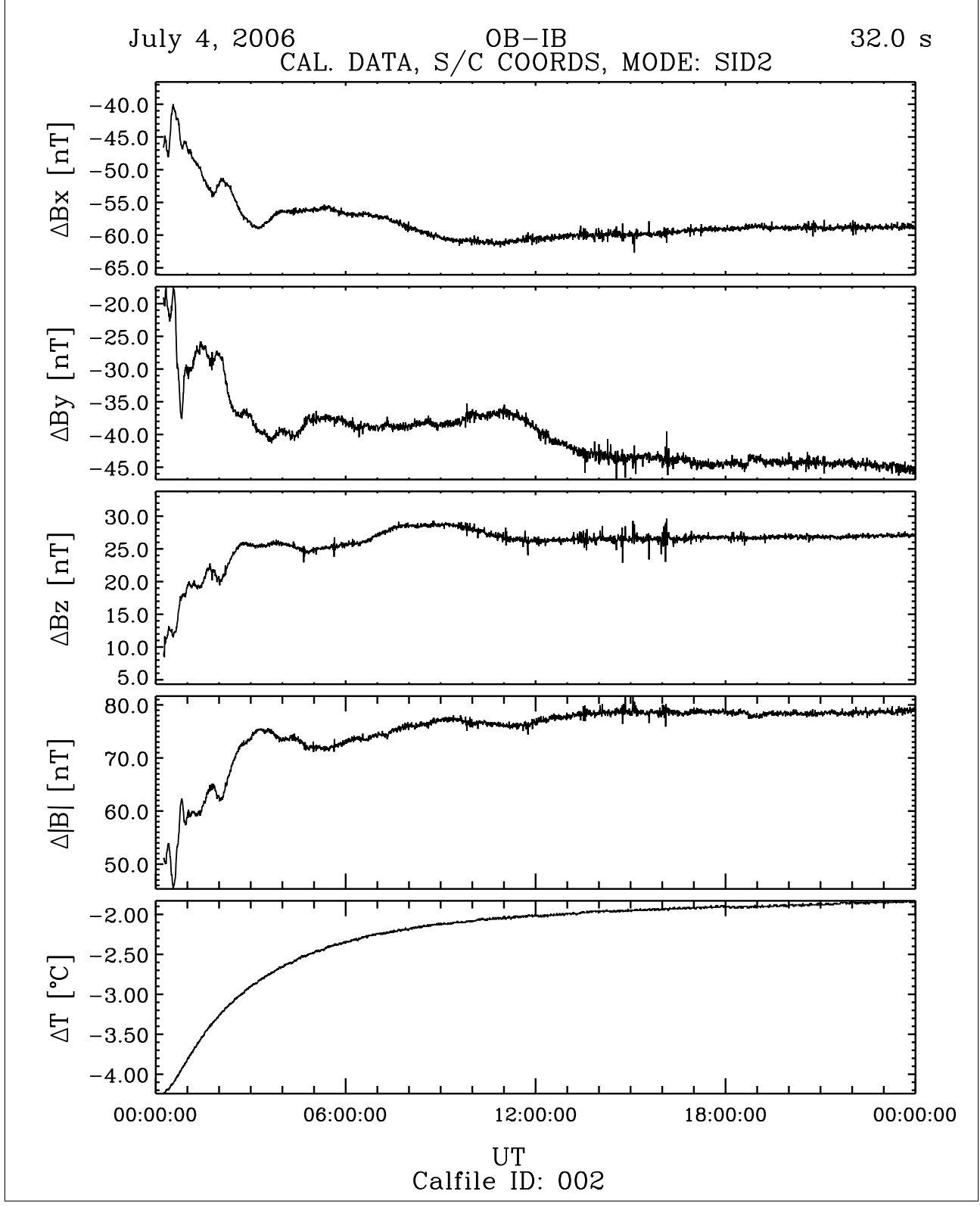


Figure 3: File: RPCMAG060704T0014_CLB_M2_DIF_P0000_2400_002

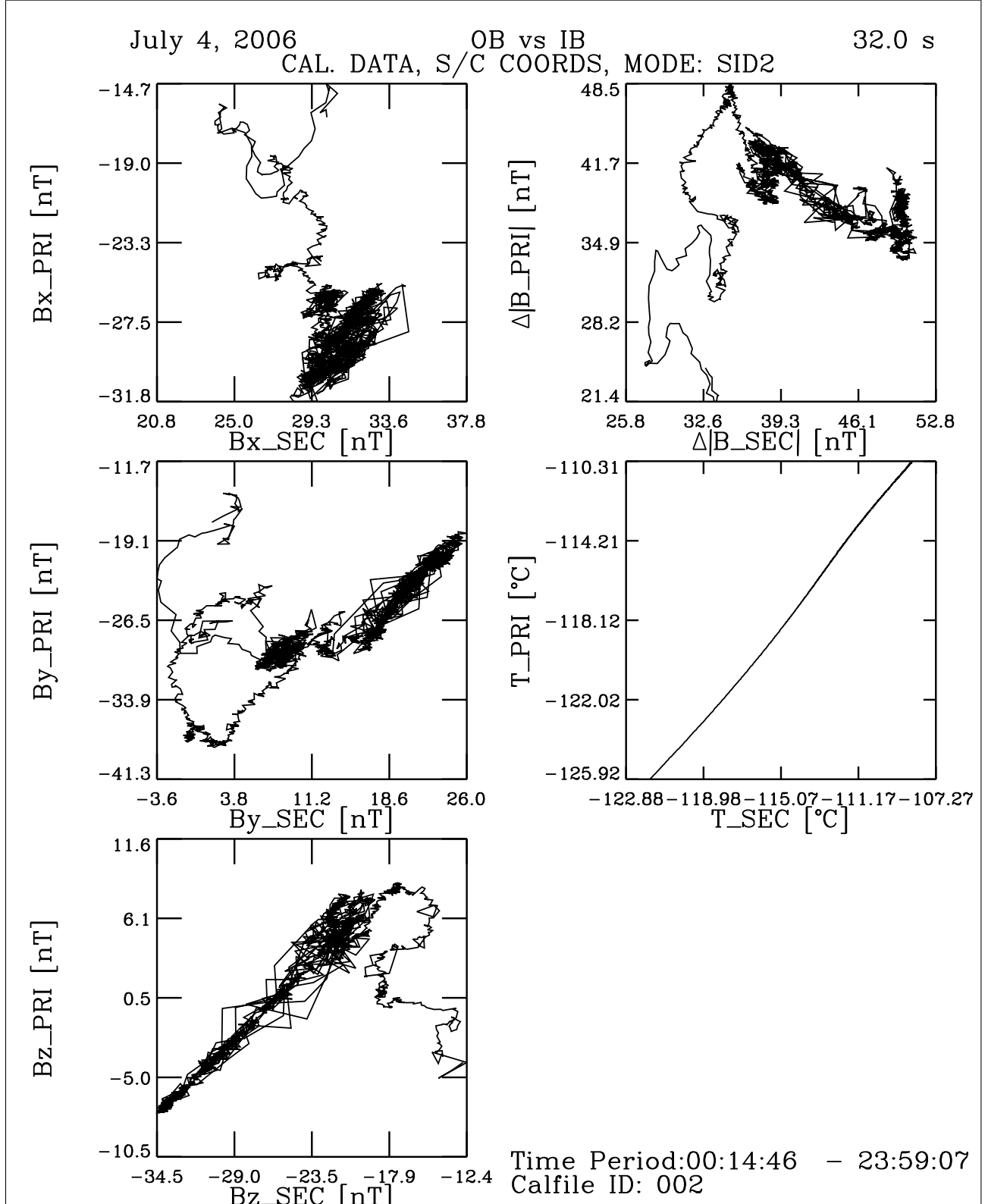


Figure 4: File: RPCMAG060704T0014_CLB_M2_XXYYZZ_P0000_2400_002

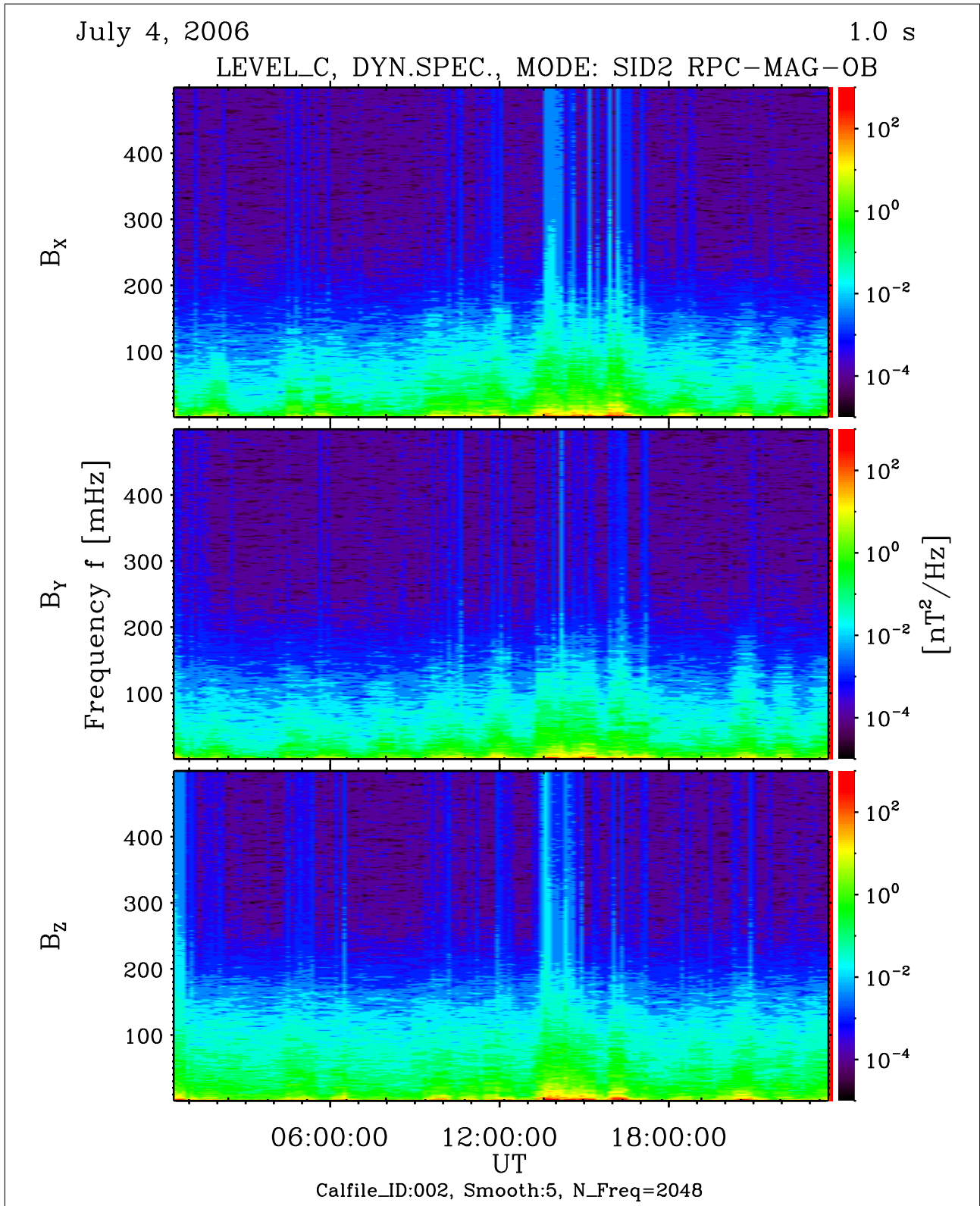


Figure 5: File: RPCMAG060704T0014_CLC_OB_M2_DS0_500_002

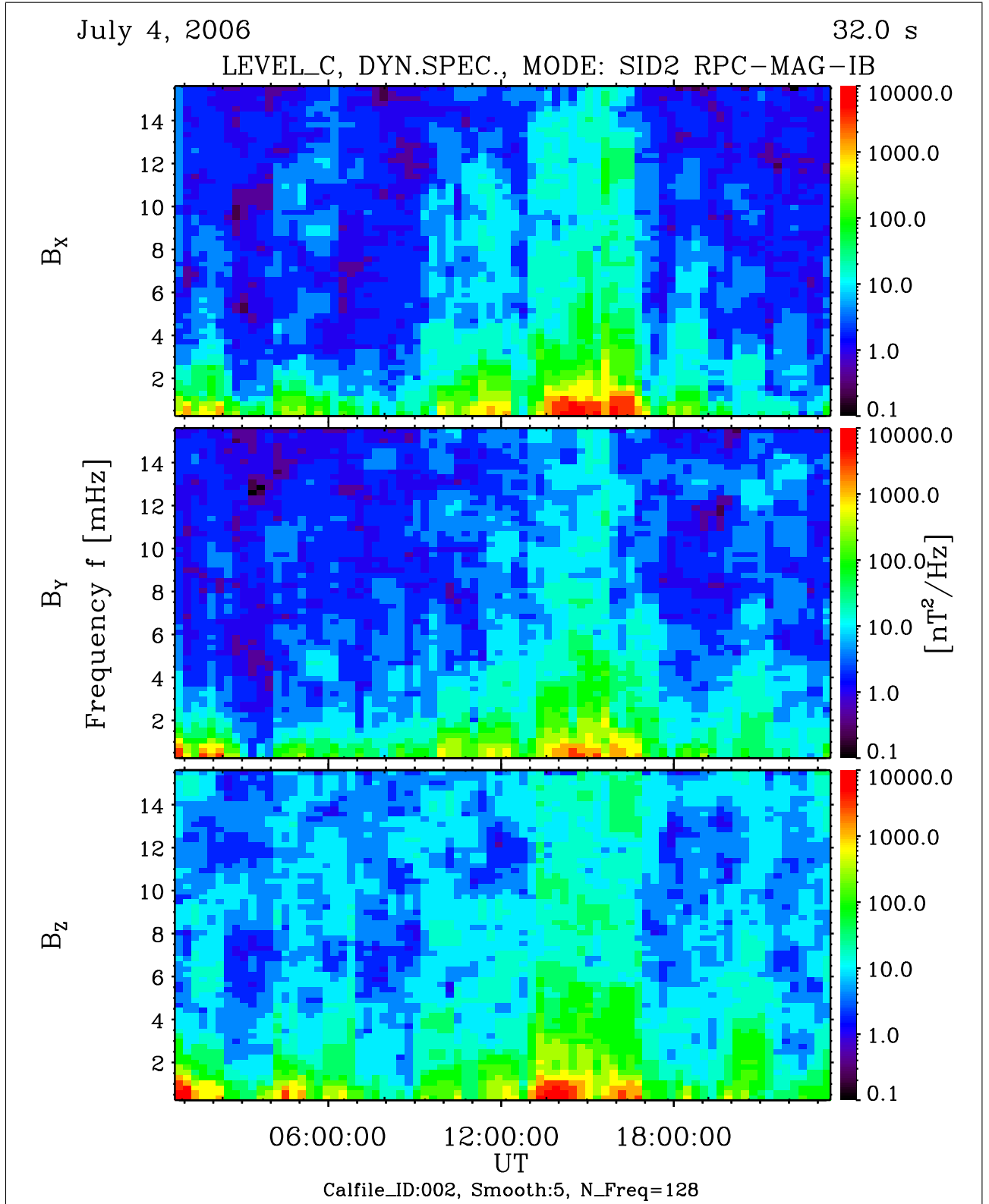


Figure 6: File: RPCMAG060704T0014_CLC_IB_M2_DS0_16_002

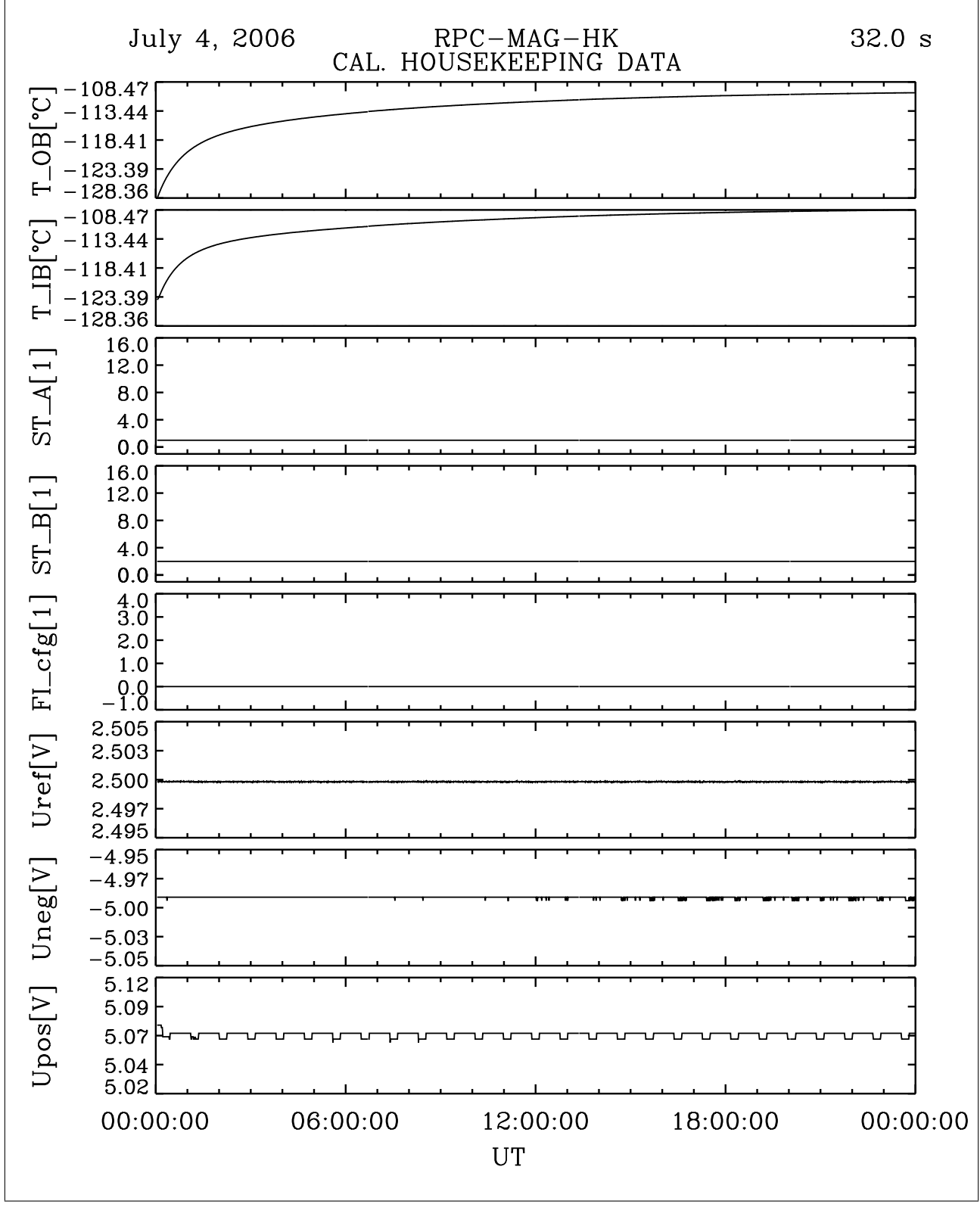


Figure 7: File: RPCMAG060704T0002_CLA_HK_P0000_2400

R O S E T T A	Document: RO-IGEP-TR-0018 Issue: 0
IGEP Institut für Geophysik u. extraterr. Physik Technische Universität Braunschweig	Revision: 1 Date: April 12, 2007 Page: 9

3 July 5, 2006

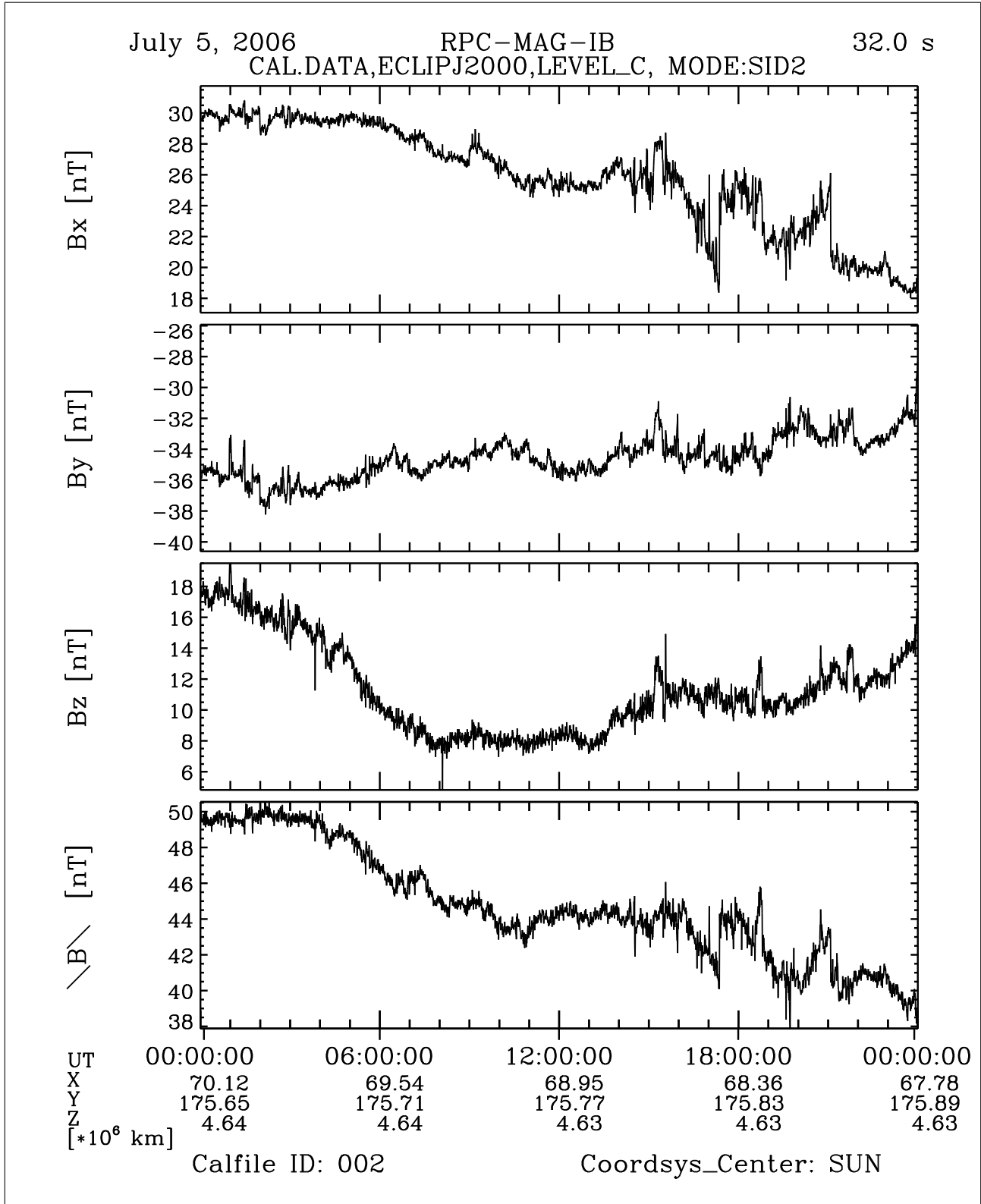


Figure 8: File: RPCMAG060705T0000_CLC_IB_M2_T0000_2400_002

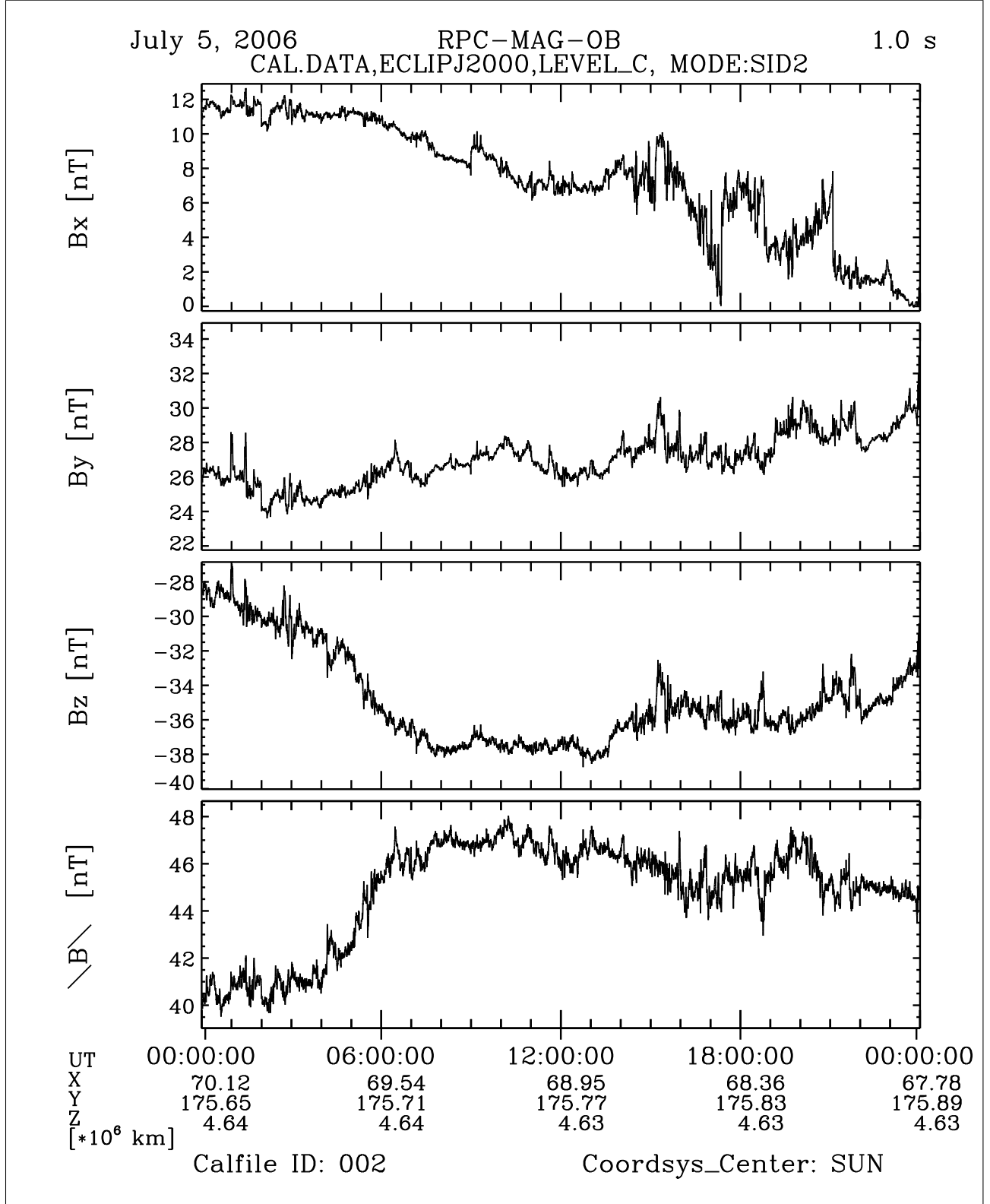


Figure 9: File: RPCMAG060705T0000_CLC_OB_M2_T0000_2400_002

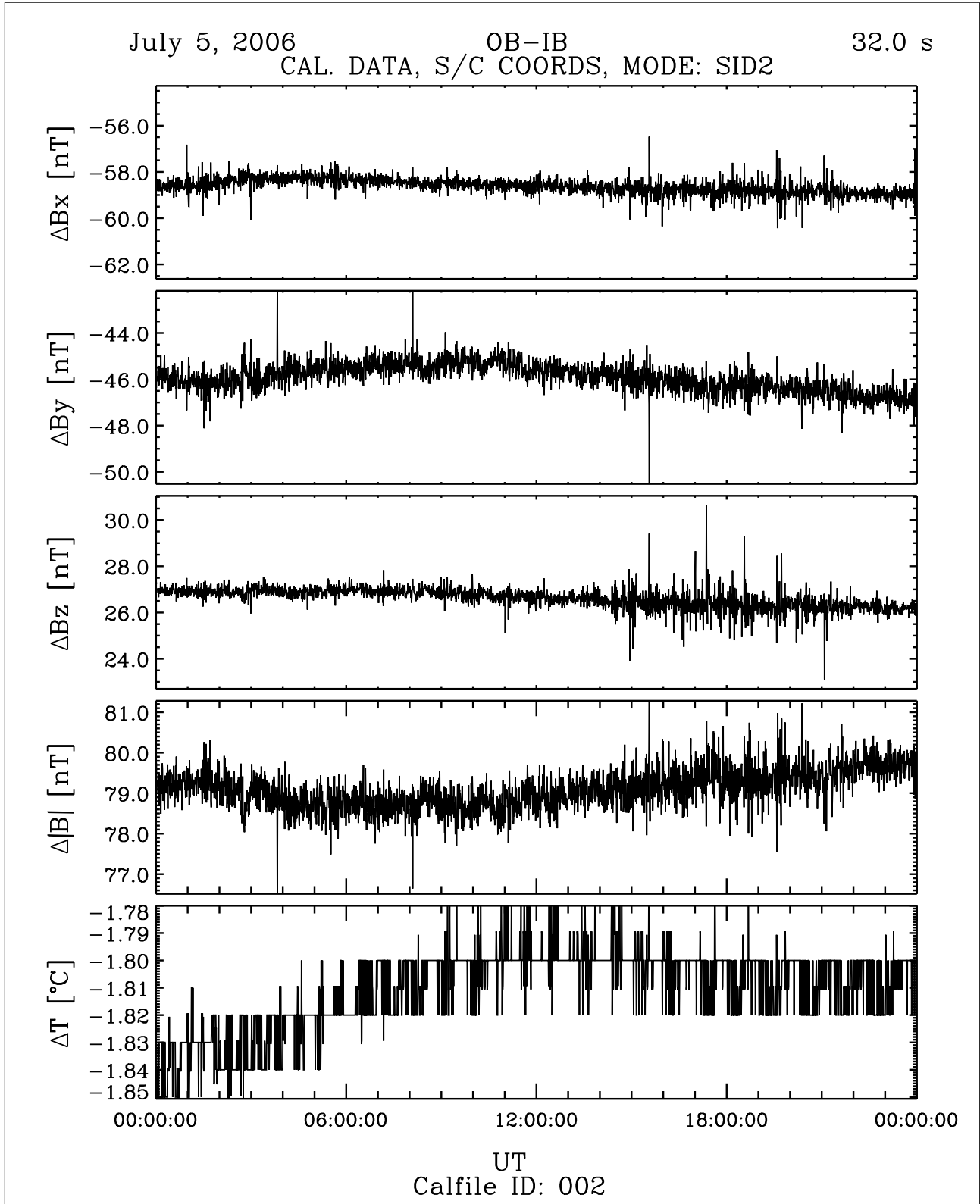


Figure 10: File: RPCMAG060705T0000_CLB_M2_DIF_P0000_2400_002

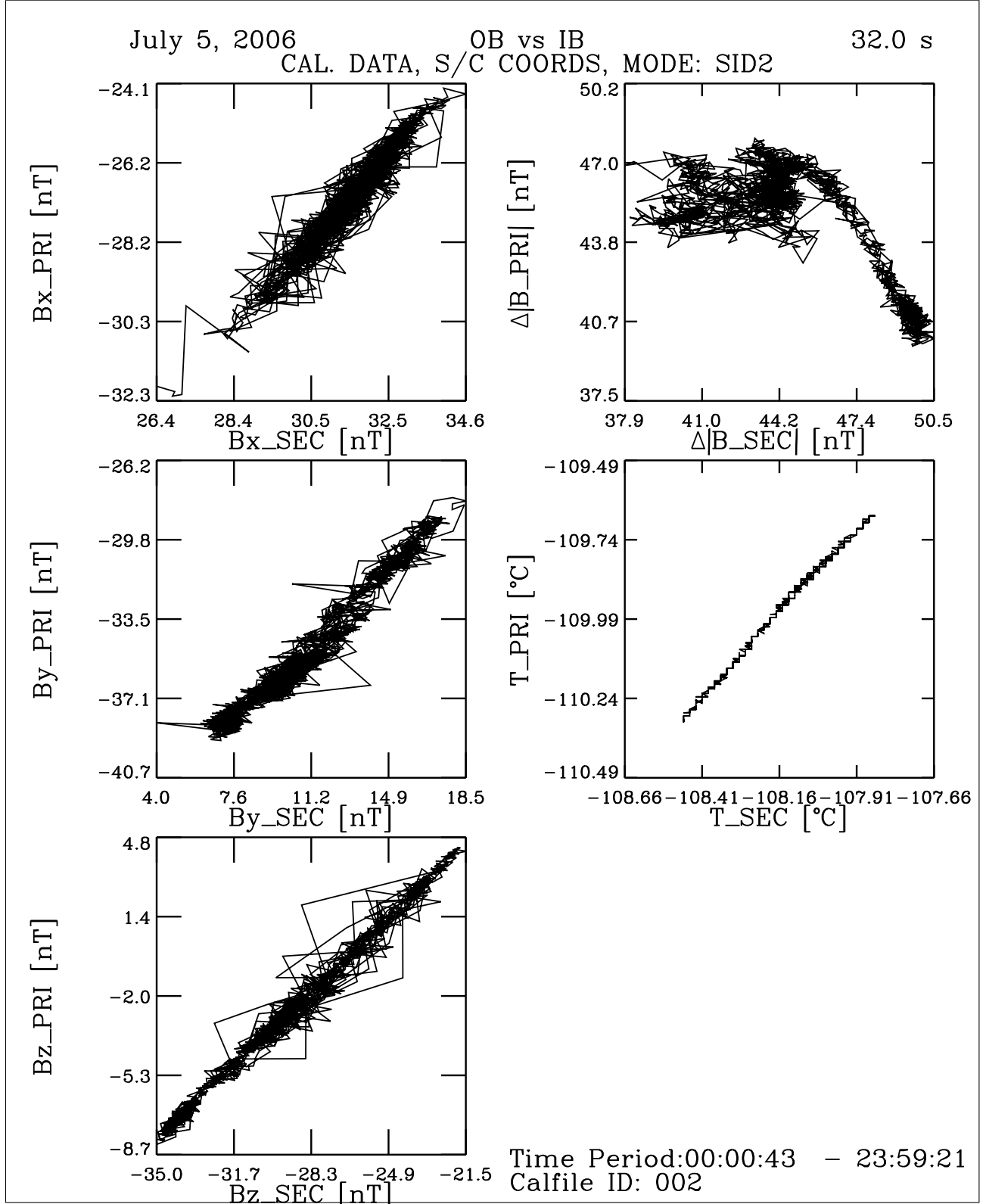


Figure 11: File: RPCMAG060705T0000_CLB_M2_XXYYZZ_P0000_2400_002

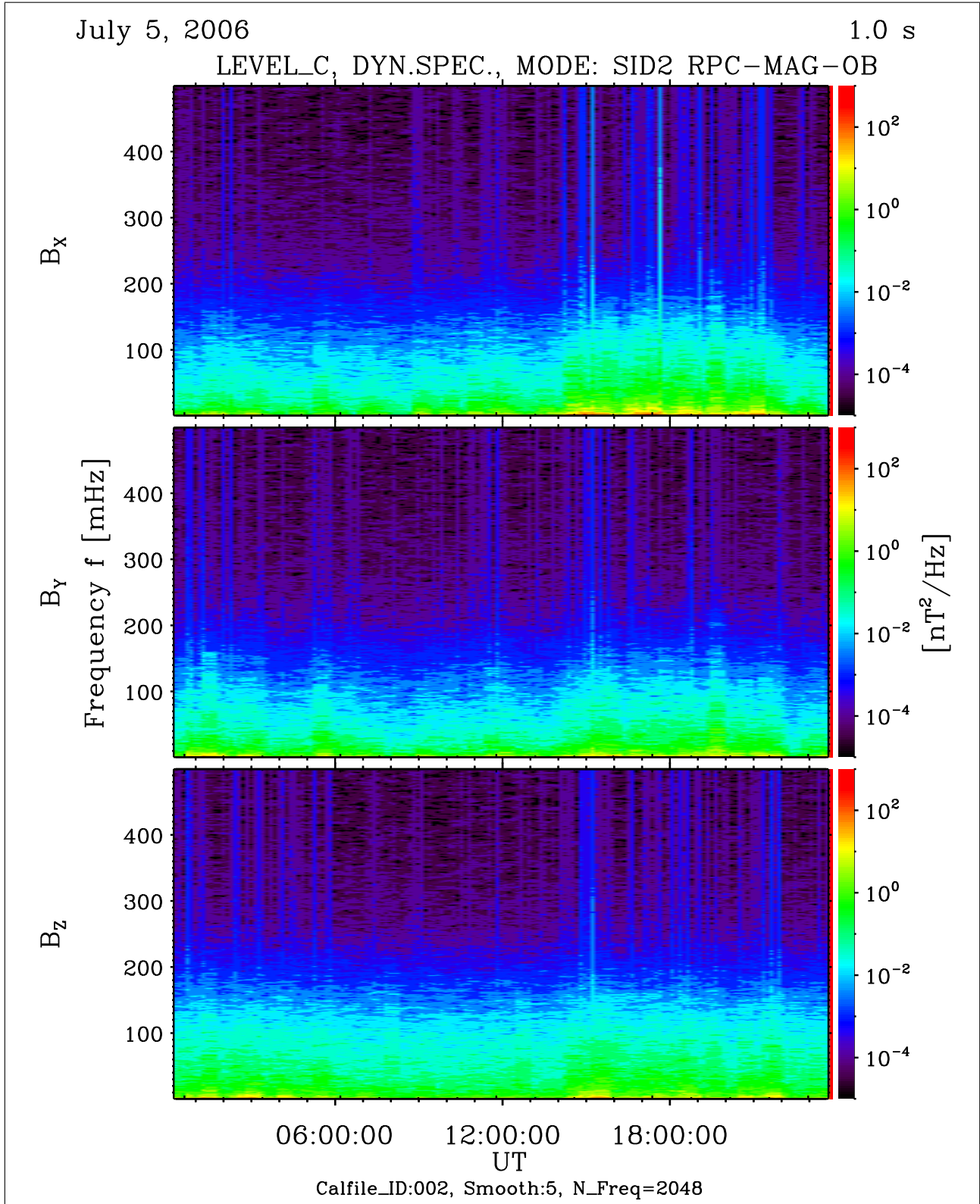


Figure 12: File: RPCMAG060705T0000_CLC_OB_M2_DS0_500_002

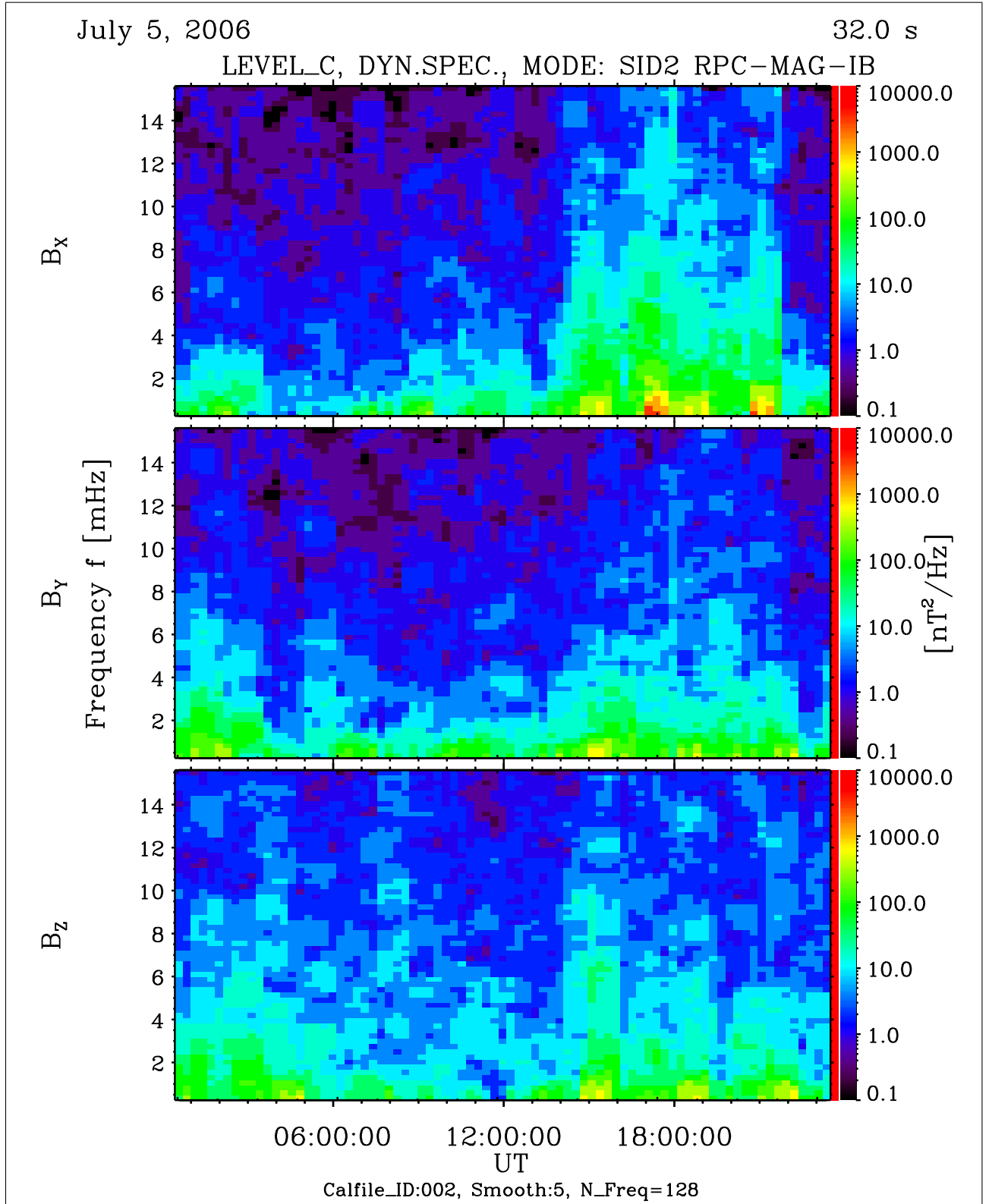


Figure 13: File: RPCMAG060705T0000_CLC_IB_M2_DS0.16_002

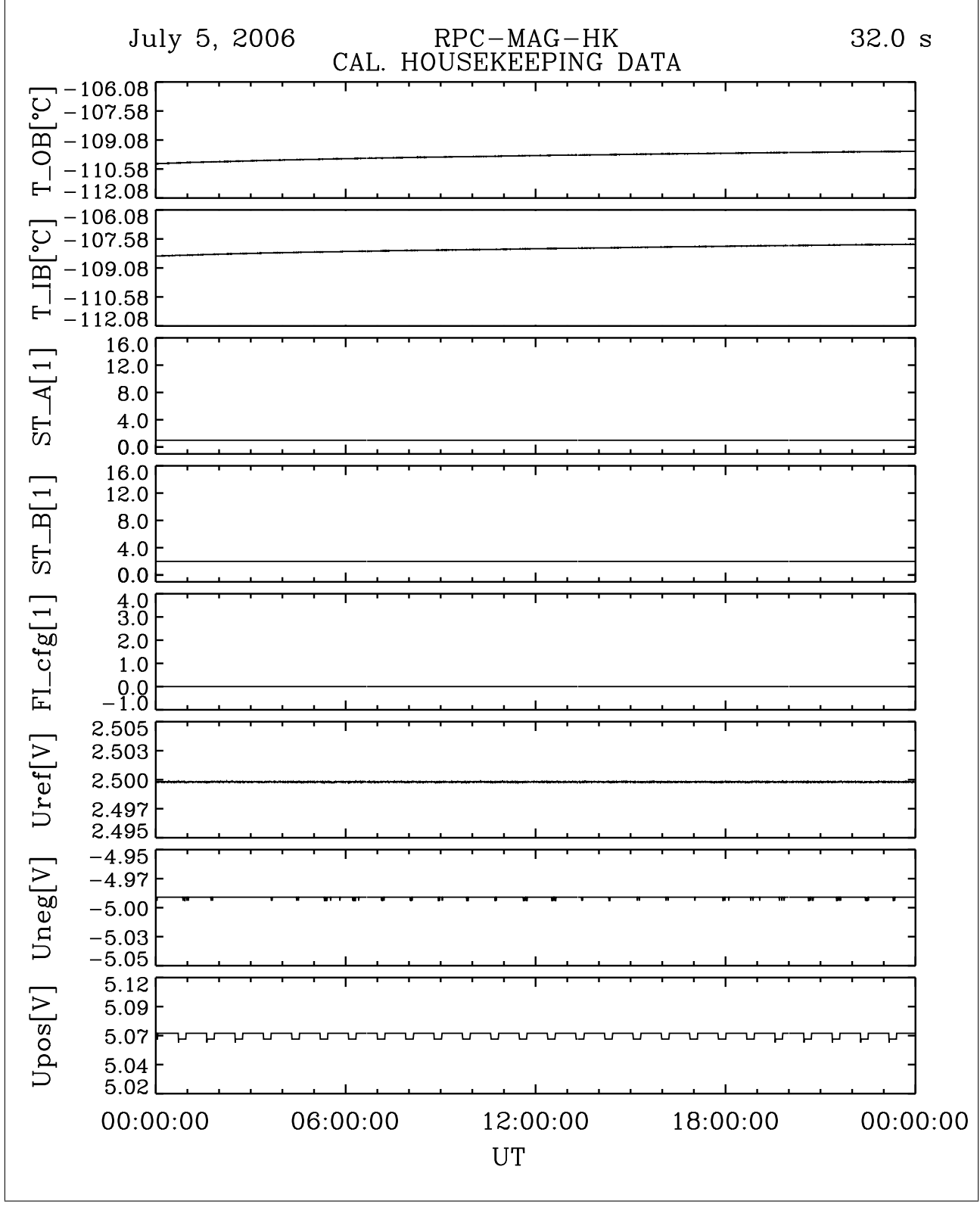


Figure 14: File: RPCMAG060705T0000_CLA_HK_P0000_2400

R O S E T T A	Document: RO-IGEP-TR-0018
IGEP Institut für Geophysik u. extraterr. Physik Technische Universität Braunschweig	Issue: 0
	Revision: 1
	Date: April 12, 2007
	Page: 17

4 July 6, 2006

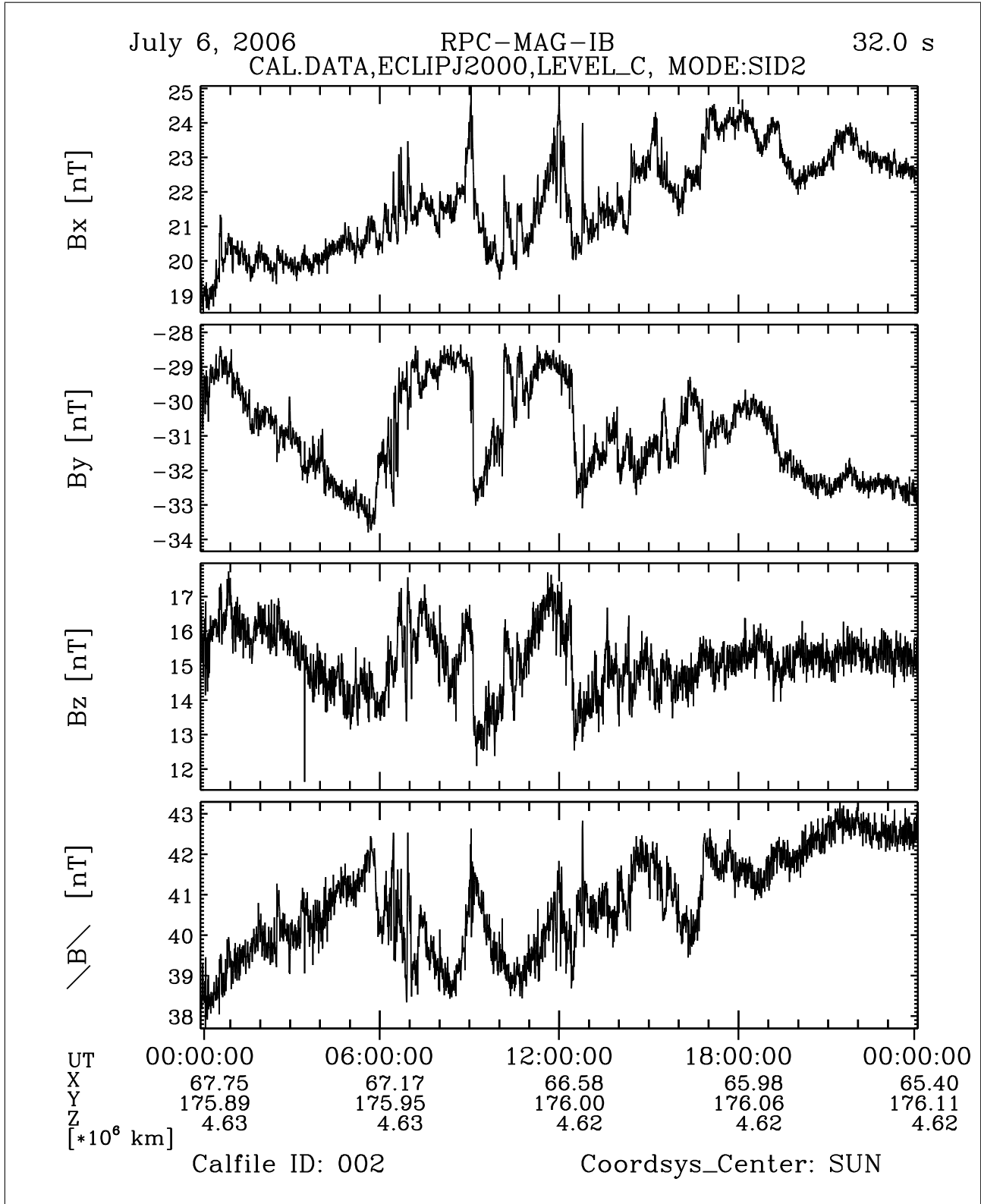


Figure 15: File: RPCMAG060706T0000_CLC_IB_M2_T0000_2400_002

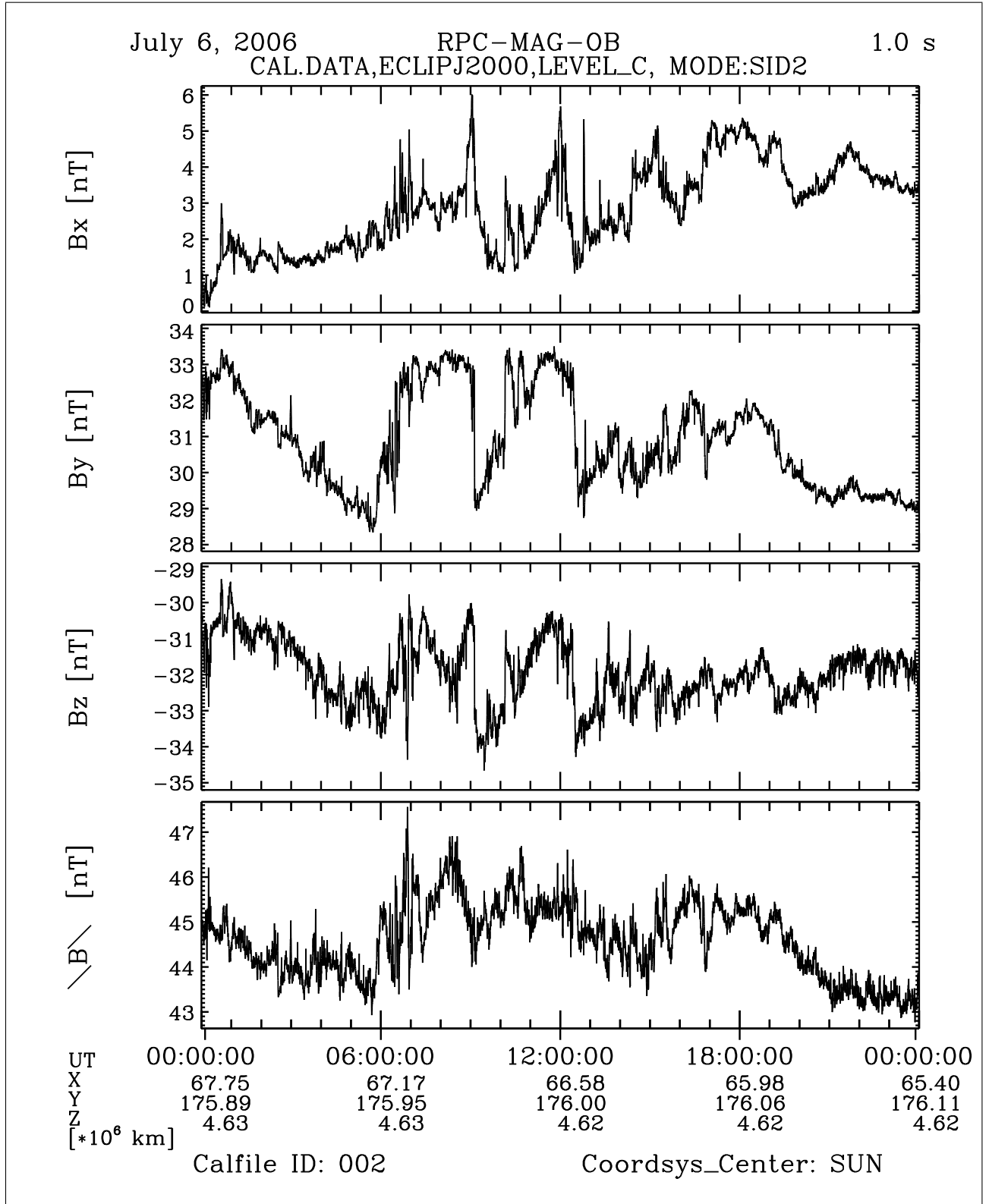


Figure 16: File: RPCMAG060706T0000_CLC_OB_M2_T0000_2400_002

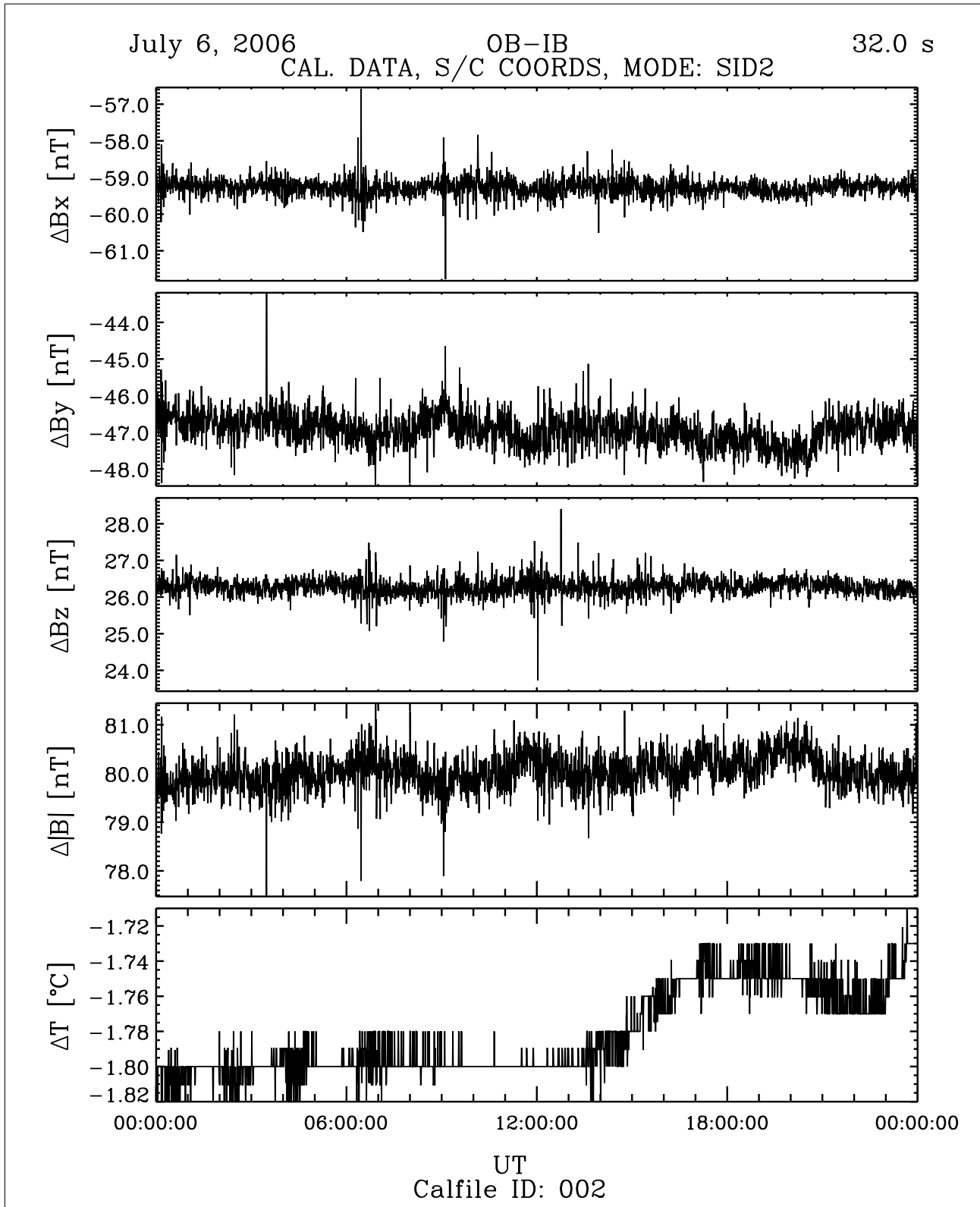


Figure 17: File: RPCMAG060706T0000_CLB_M2_DIF_P0000_2400_002

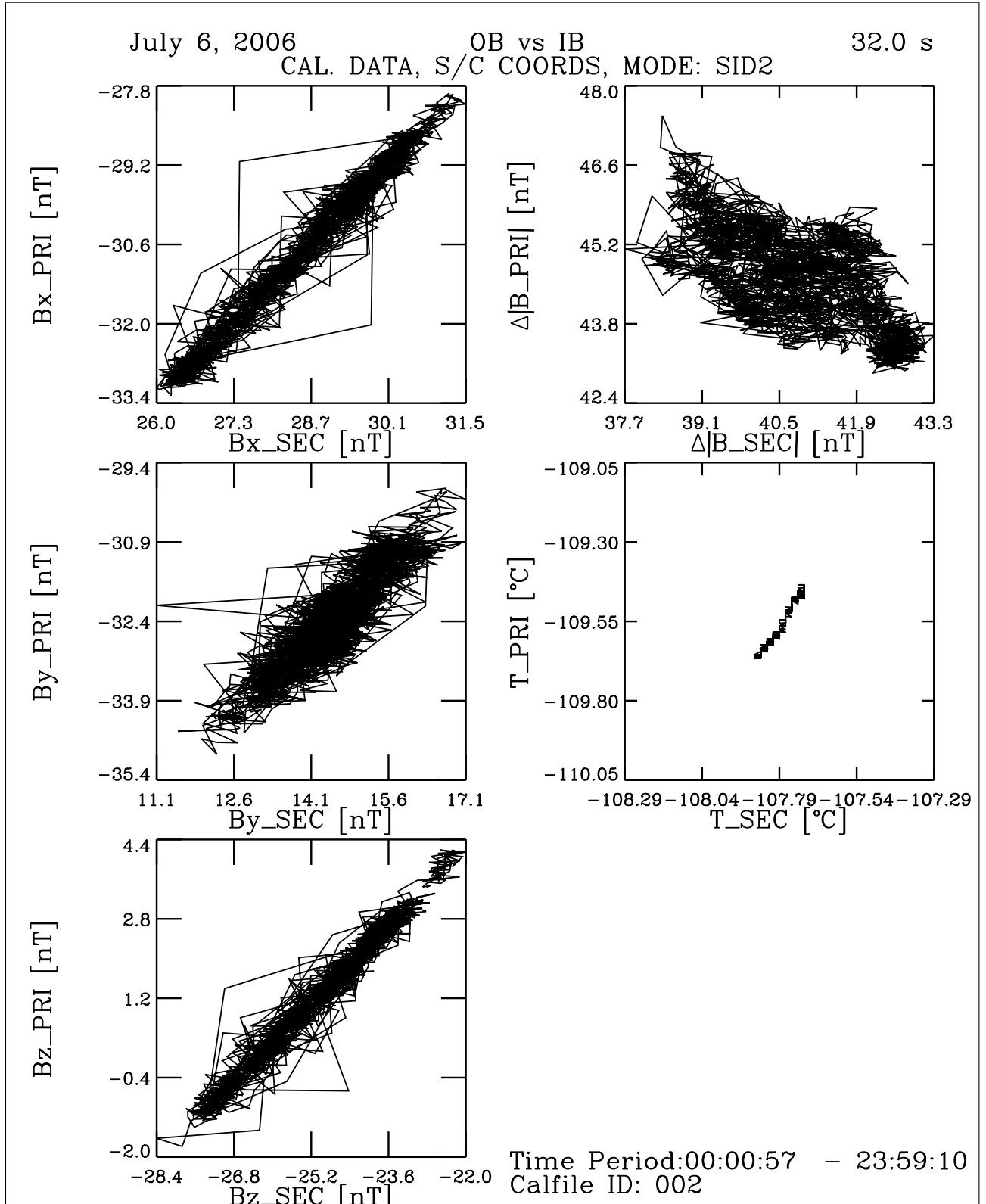


Figure 18: File: RPCMAG060706T0000_CLB_M2_XXYYZZ_P0000_2400_002

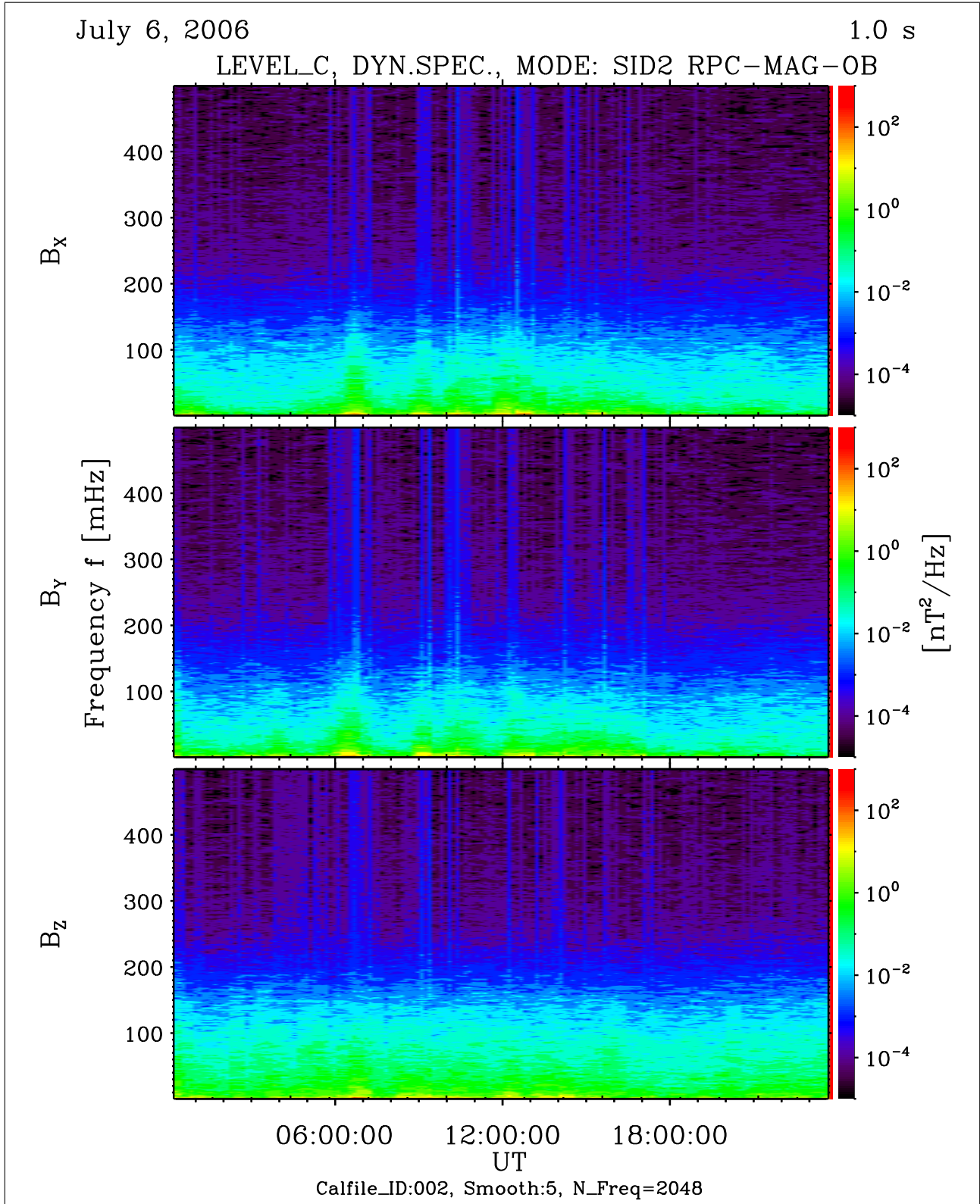


Figure 19: File: RPCMAG060706T0000_CLC_OB_M2_DS0_500_002

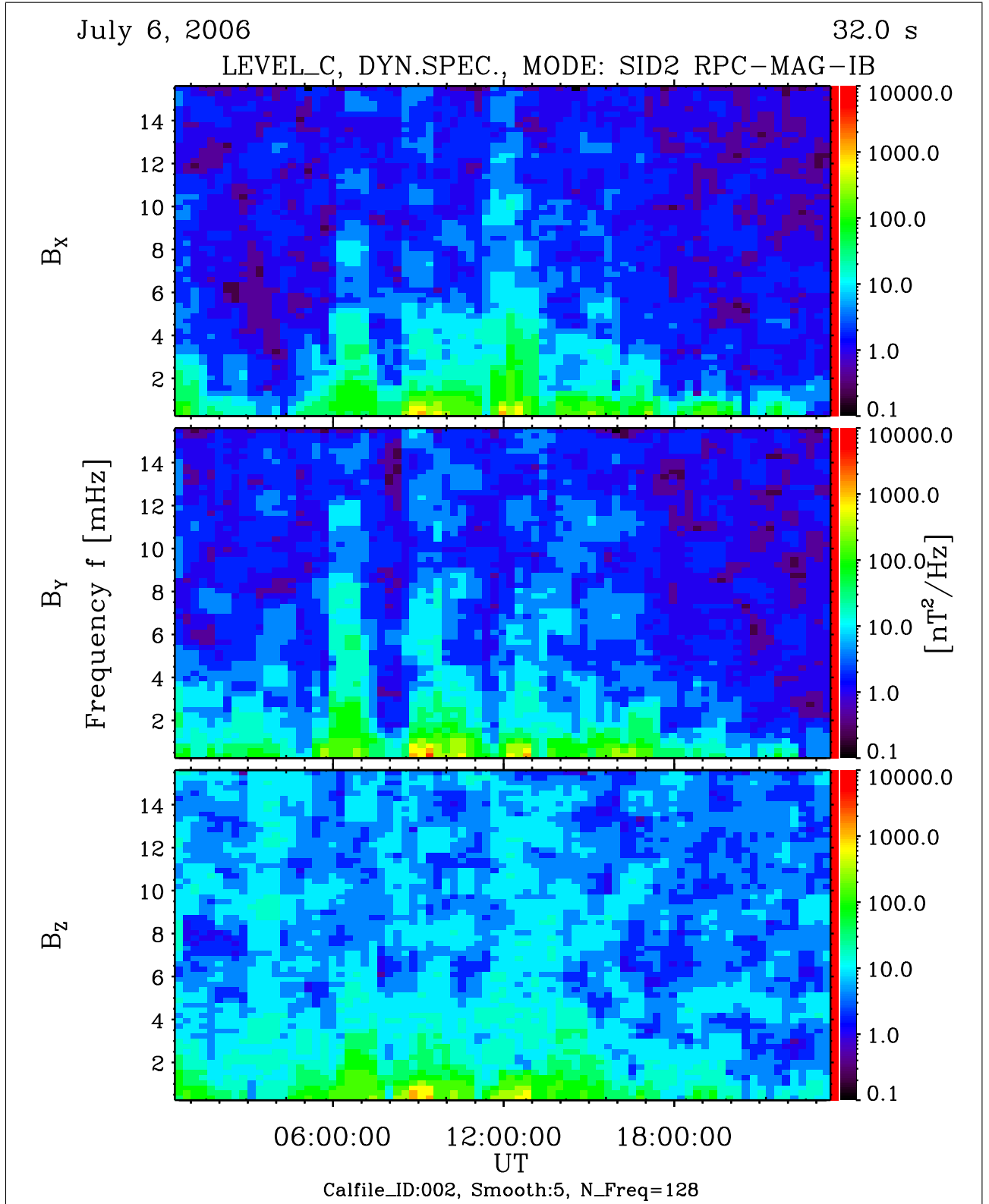


Figure 20: File: RPCMAG060706T0000_CLC_IB_M2_DS0_16_002

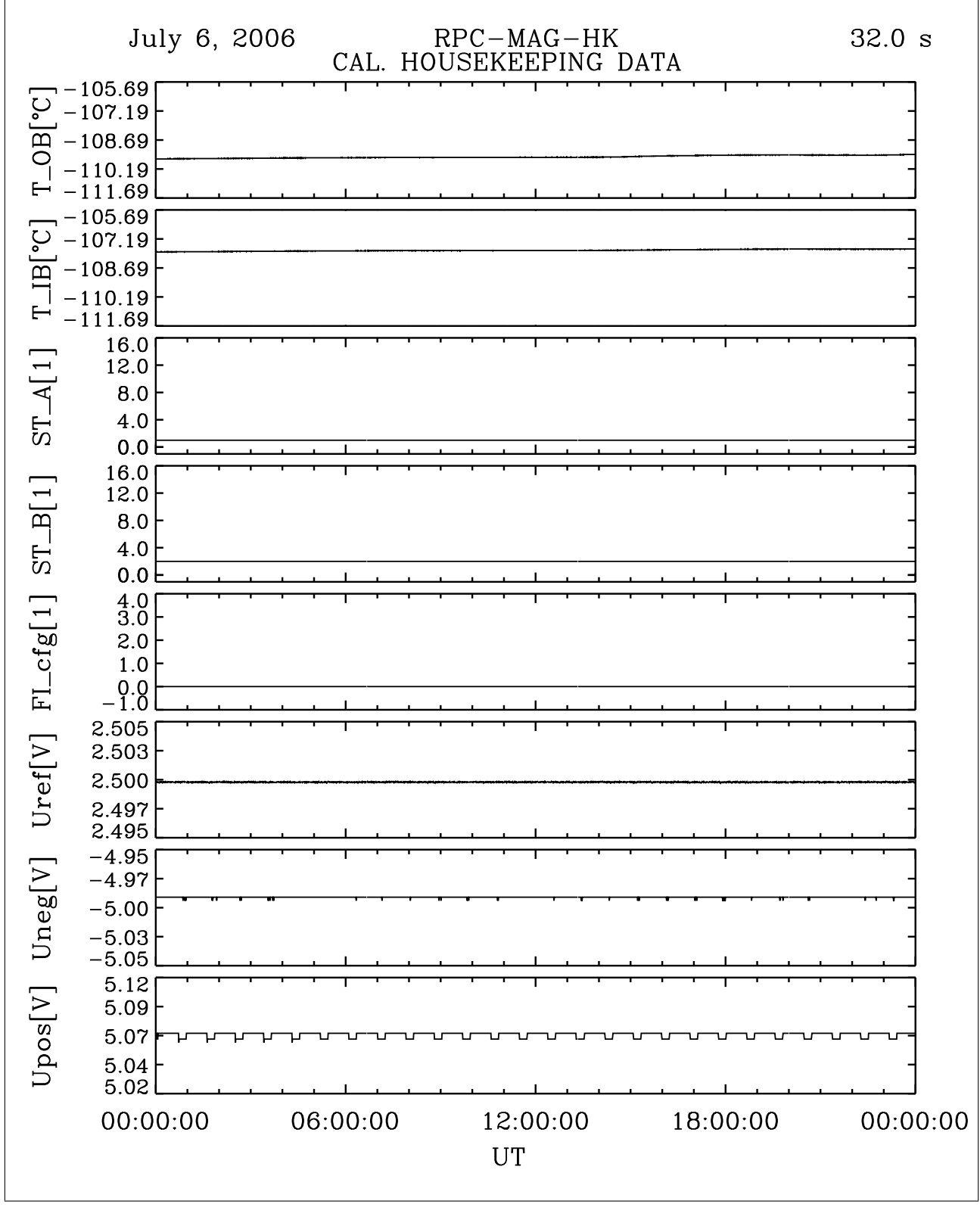


Figure 21: File: RPCMAG060706T0000_CLA_HK_P0000_2400

R O S E T T A	Document: RO-IGEP-TR-0018 Issue: 0
IGEP Institut für Geophysik u. extraterr. Physik Technische Universität Braunschweig	Revision: 1 Date: April 12, 2007 Page: 25

5 July 7, 2006

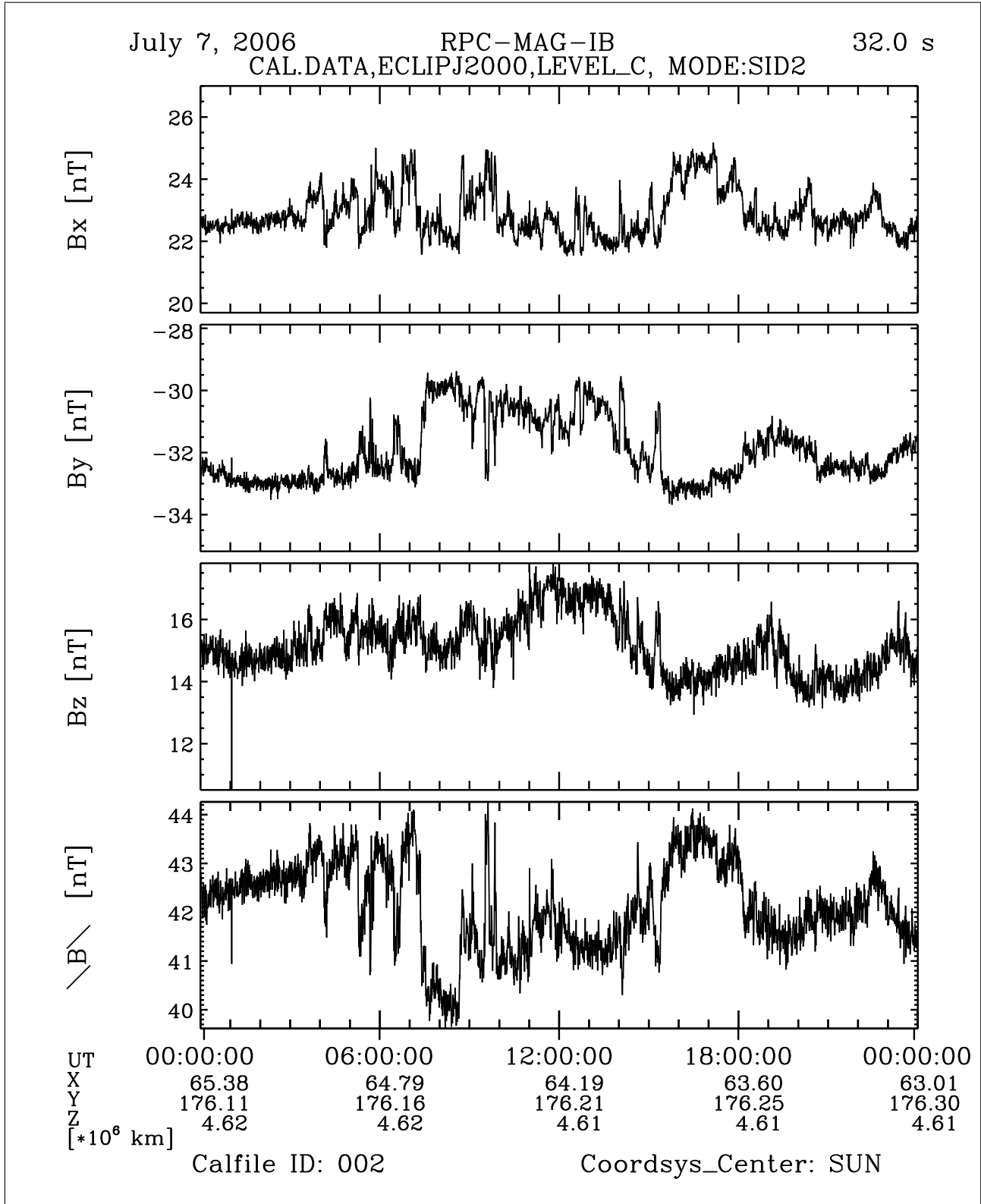


Figure 22: File: RPCMAG060707T0000_CLC_IB_M2_T0000_2400_002

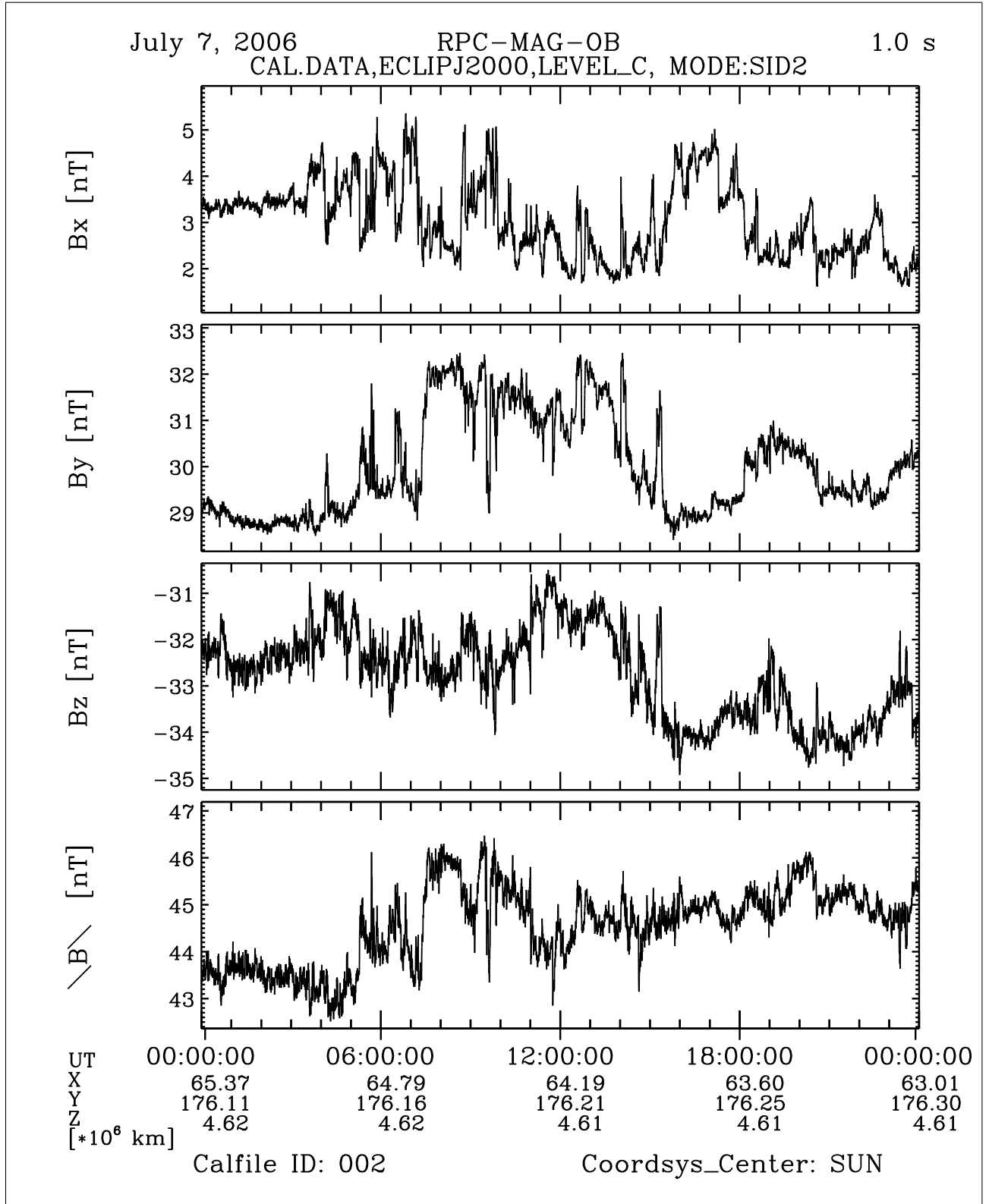


Figure 23: File: RPCMAG060707T0000_CLC_OB_M2_T0000_2400_002

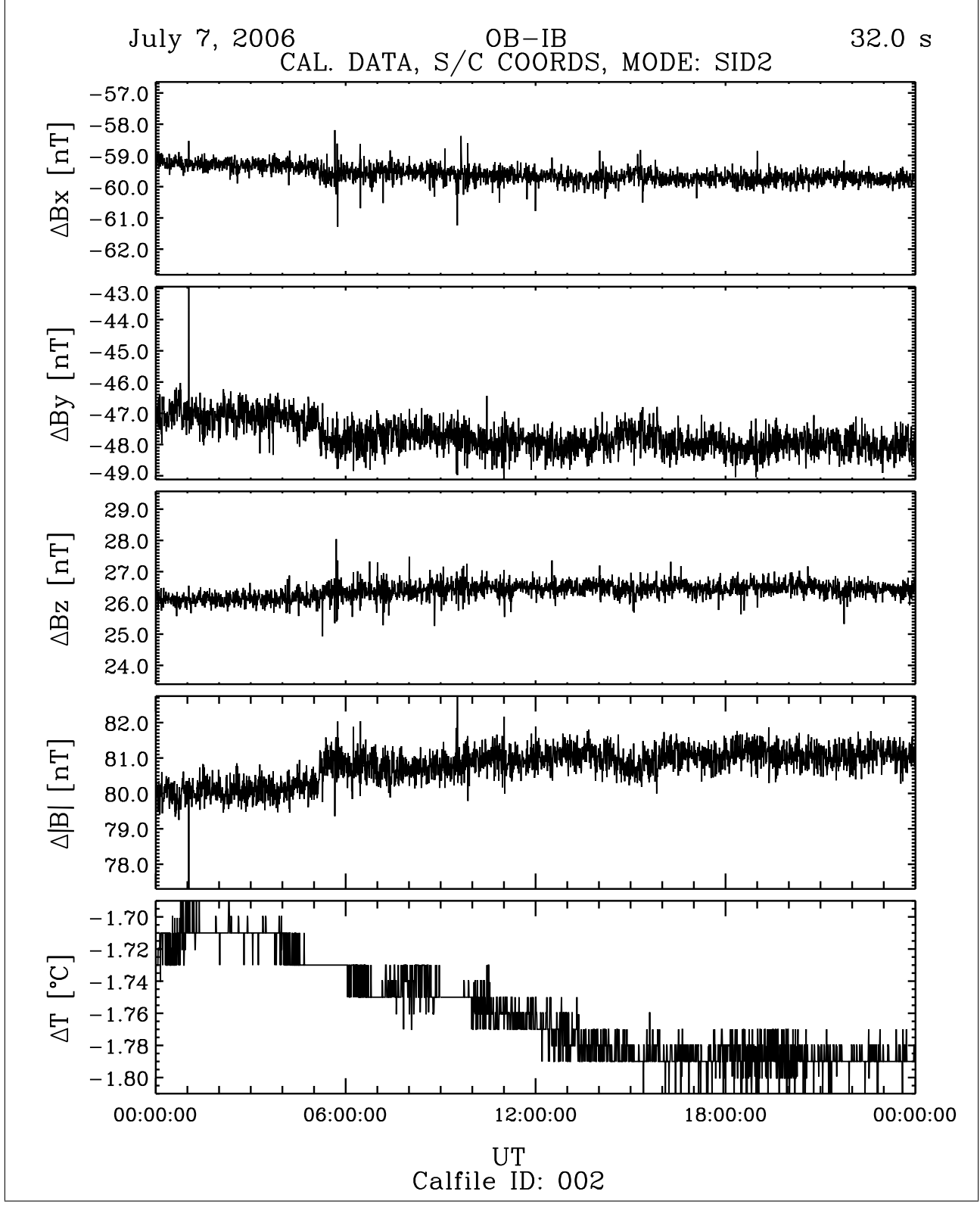


Figure 24: File: RPCMAG060707T0000_CLB_M2_DIF_P0000_2400_002

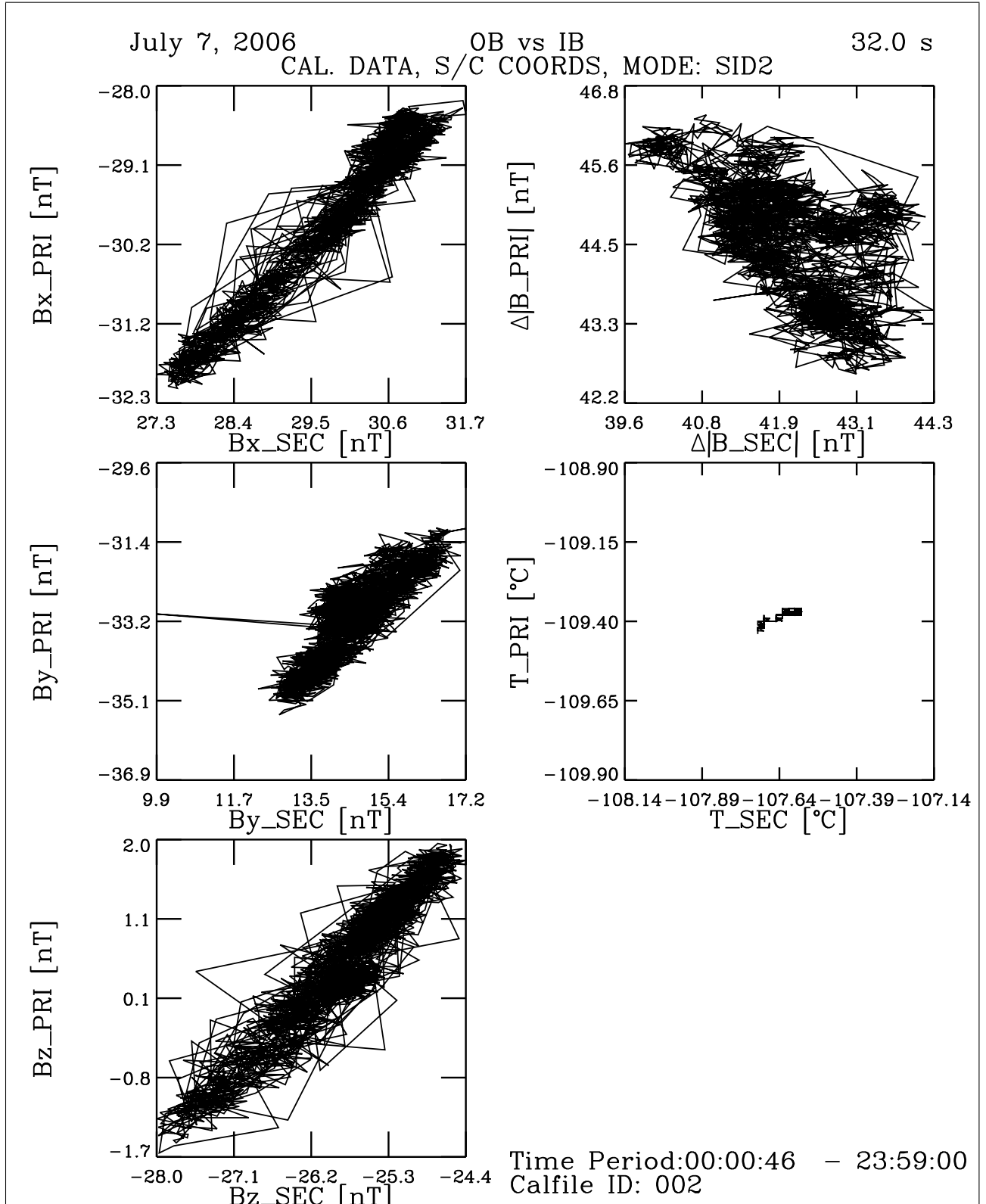


Figure 25: File: RPCMAG060707T0000_CLB_M2_XXYYZZ_P0000_2400_002

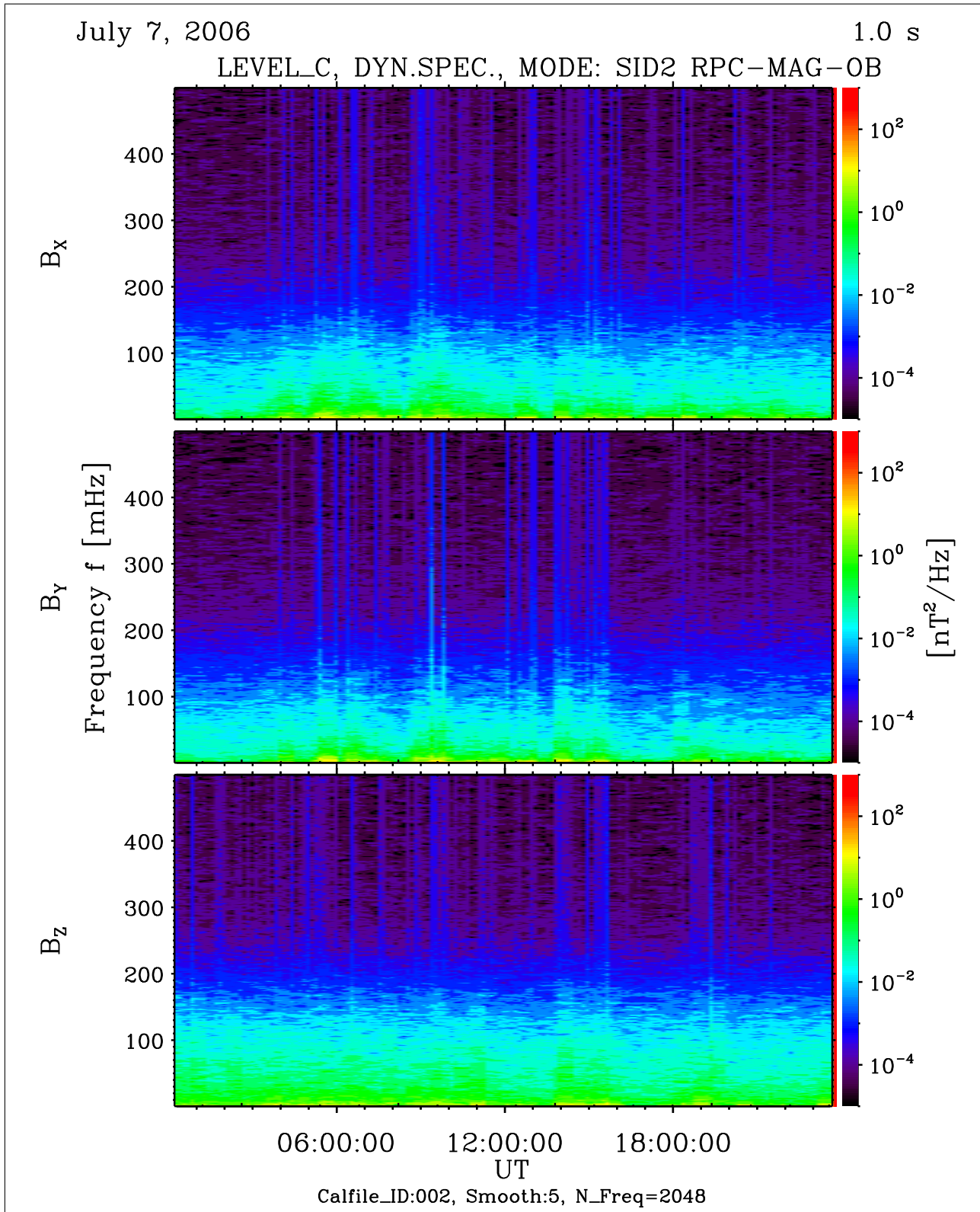


Figure 26: File: RPCMAG060707T0000_CLC_OB_M2_DS0_500_002

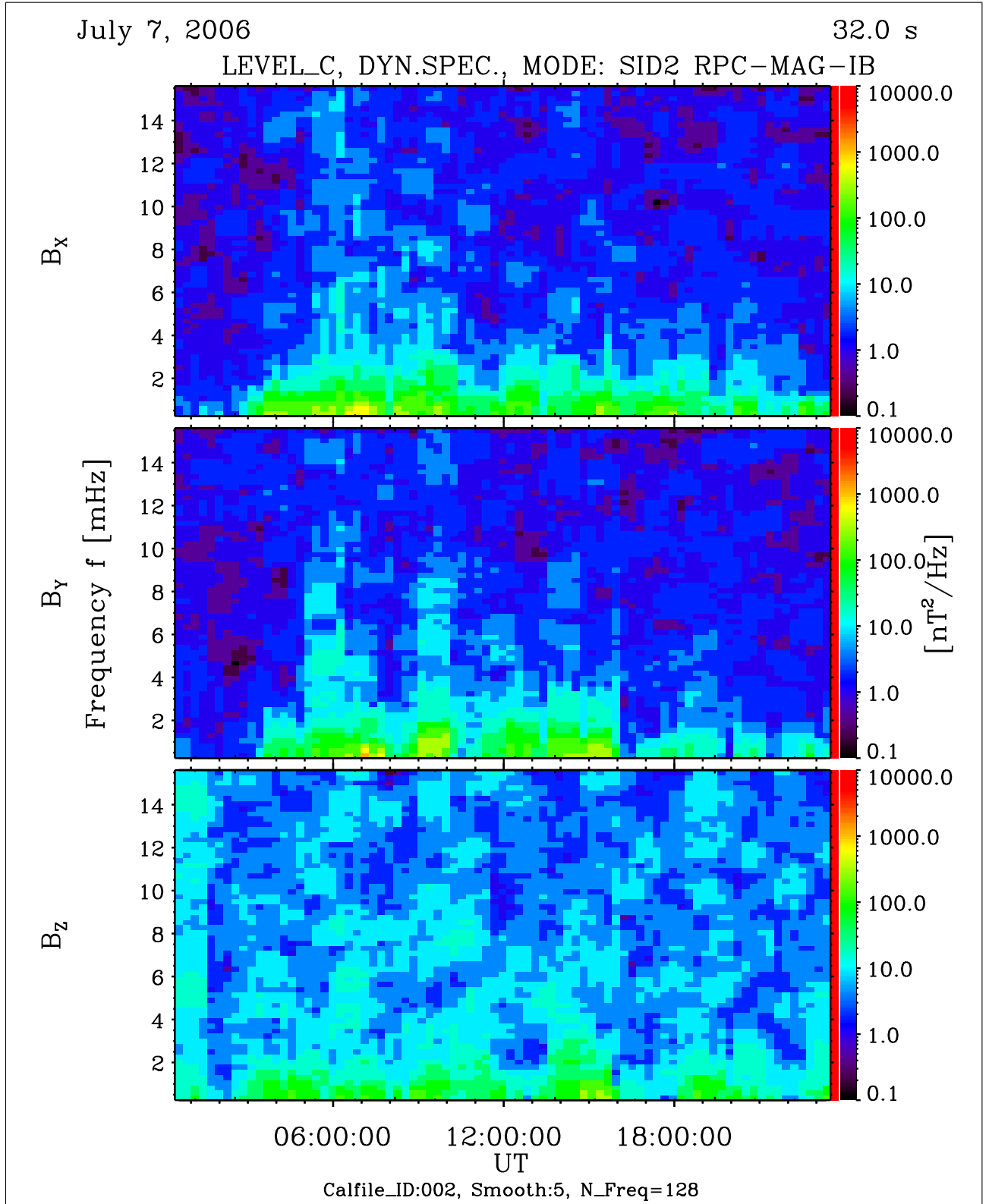


Figure 27: File: RPCMAG060707T0000_CLC_IB_M2_DS0.16_002

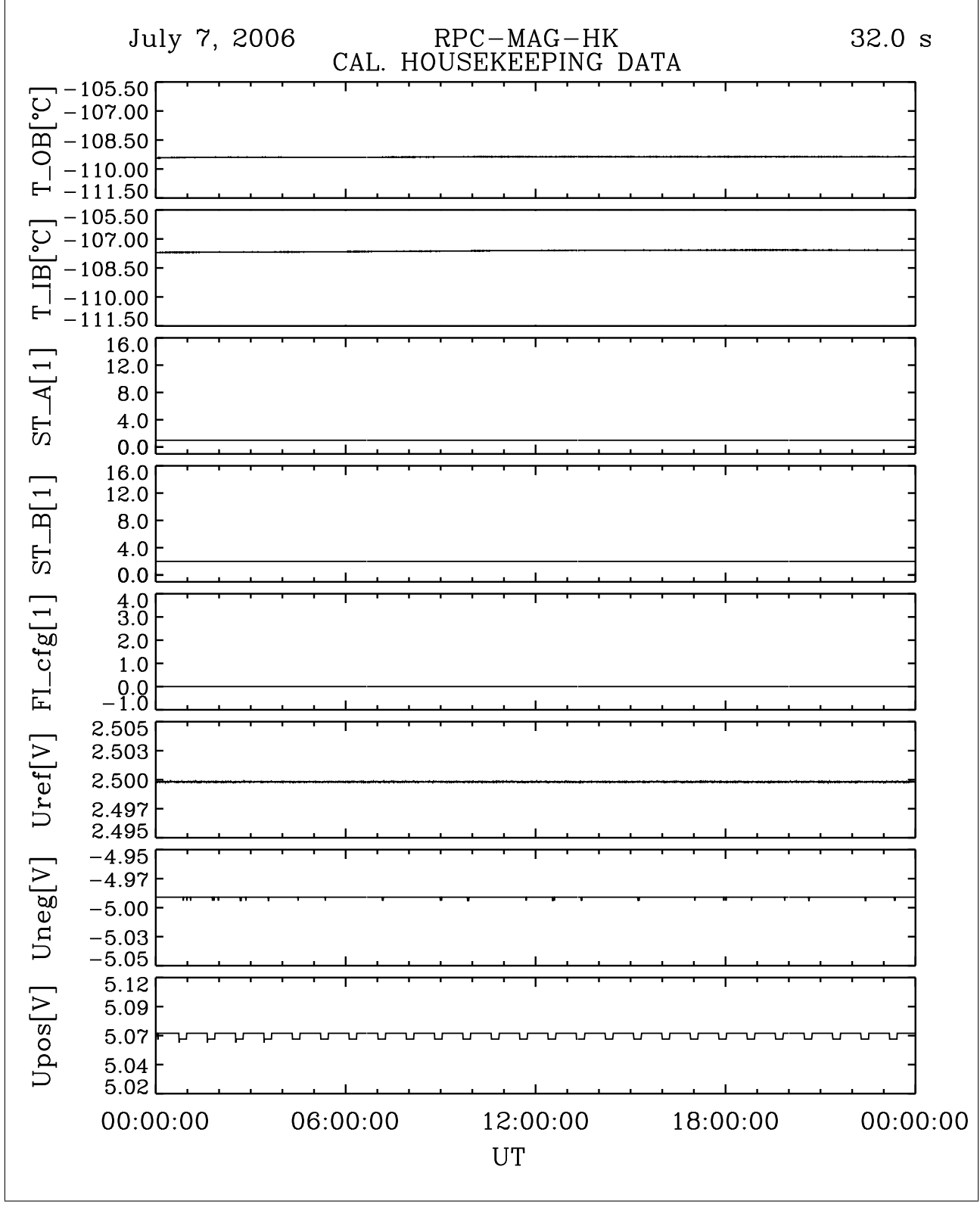


Figure 28: File: RPCMAG060707T0000_CLA_HK_P0000_2400

R O S E T T A	Document: RO-IGEP-TR-0018 Issue: 0
IGEP Institut für Geophysik u. extraterr. Physik Technische Universität Braunschweig	Revision: 1 Date: April 12, 2007 Page: 33

6 July 8, 2006

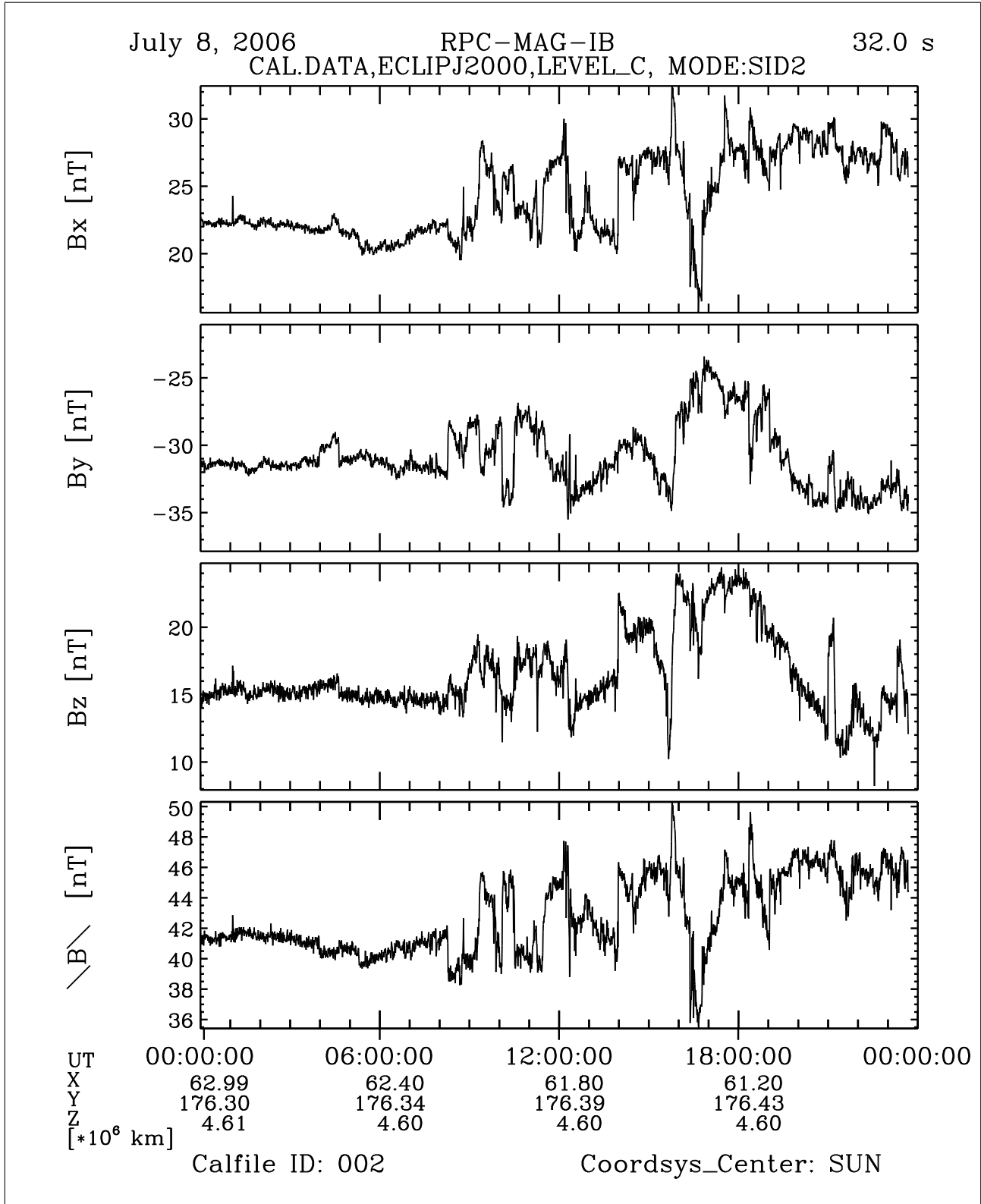


Figure 29: File: RPCMAG060708T0000_CLC_IB_M2_T0000_2400_002

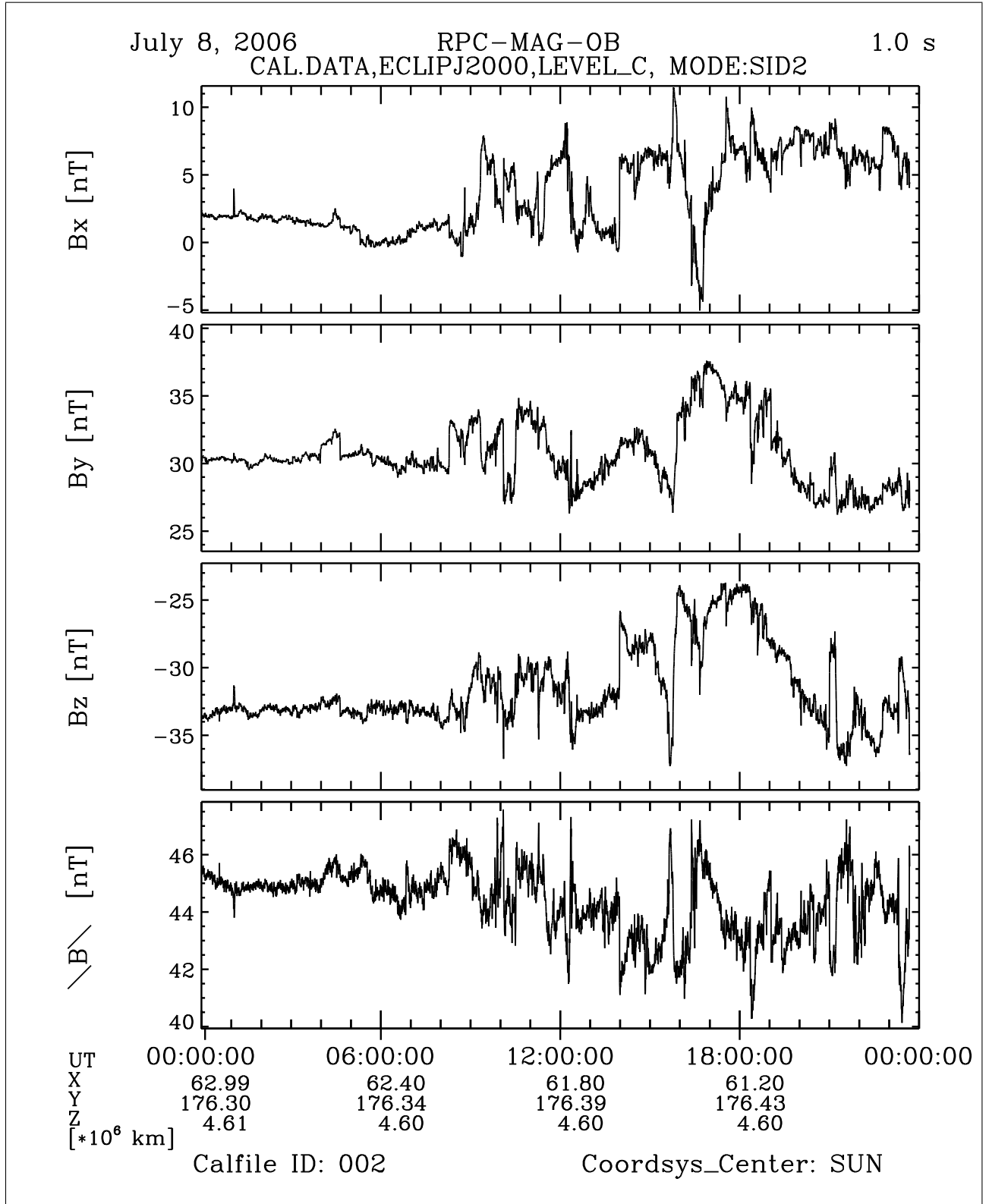


Figure 30: File: RPCMAG060708T0000_CLC_OB_M2_T0000_2400_002

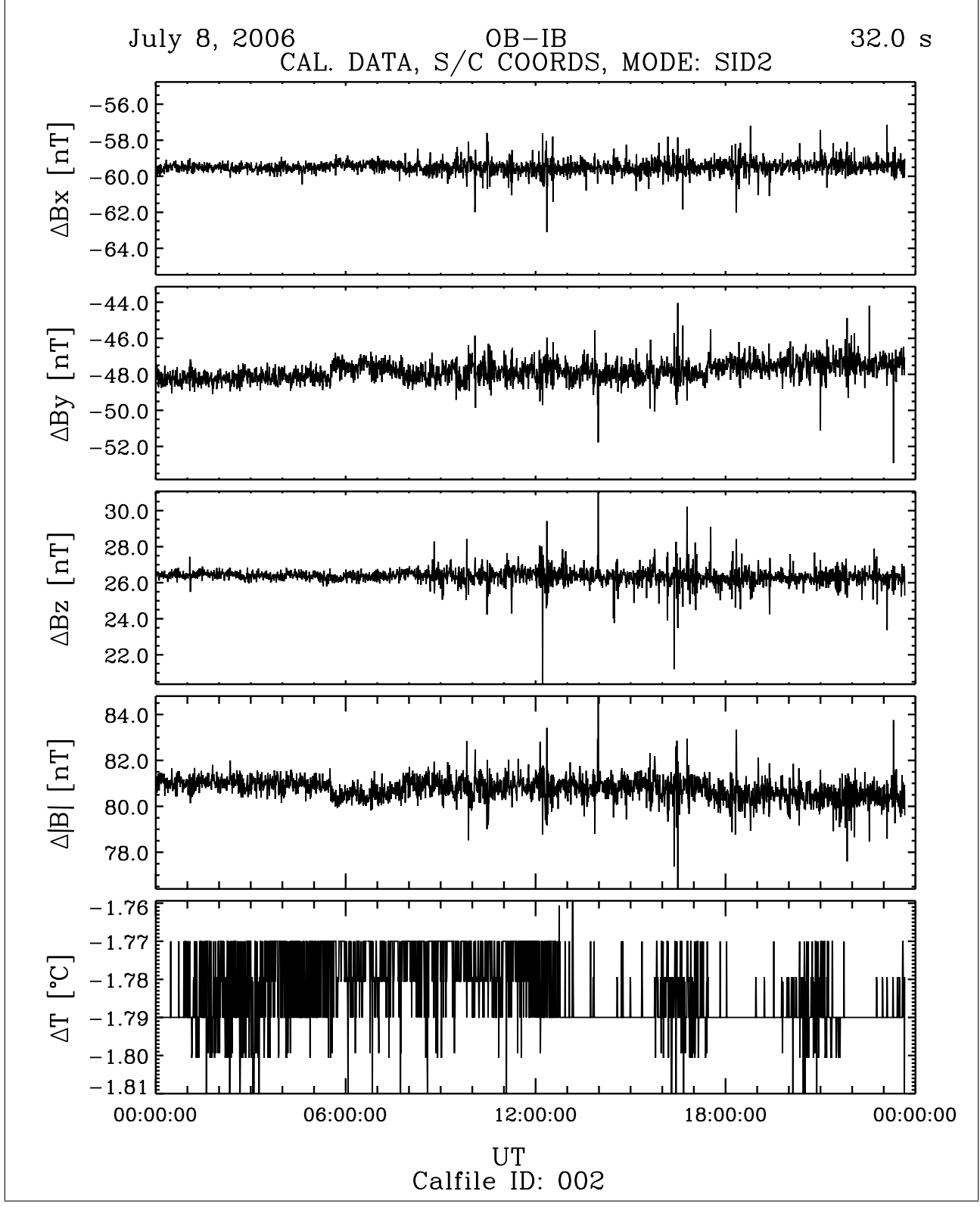


Figure 31: File: RPCMAG060708T0000_CLB_M2_DIF_P0000_2400_002

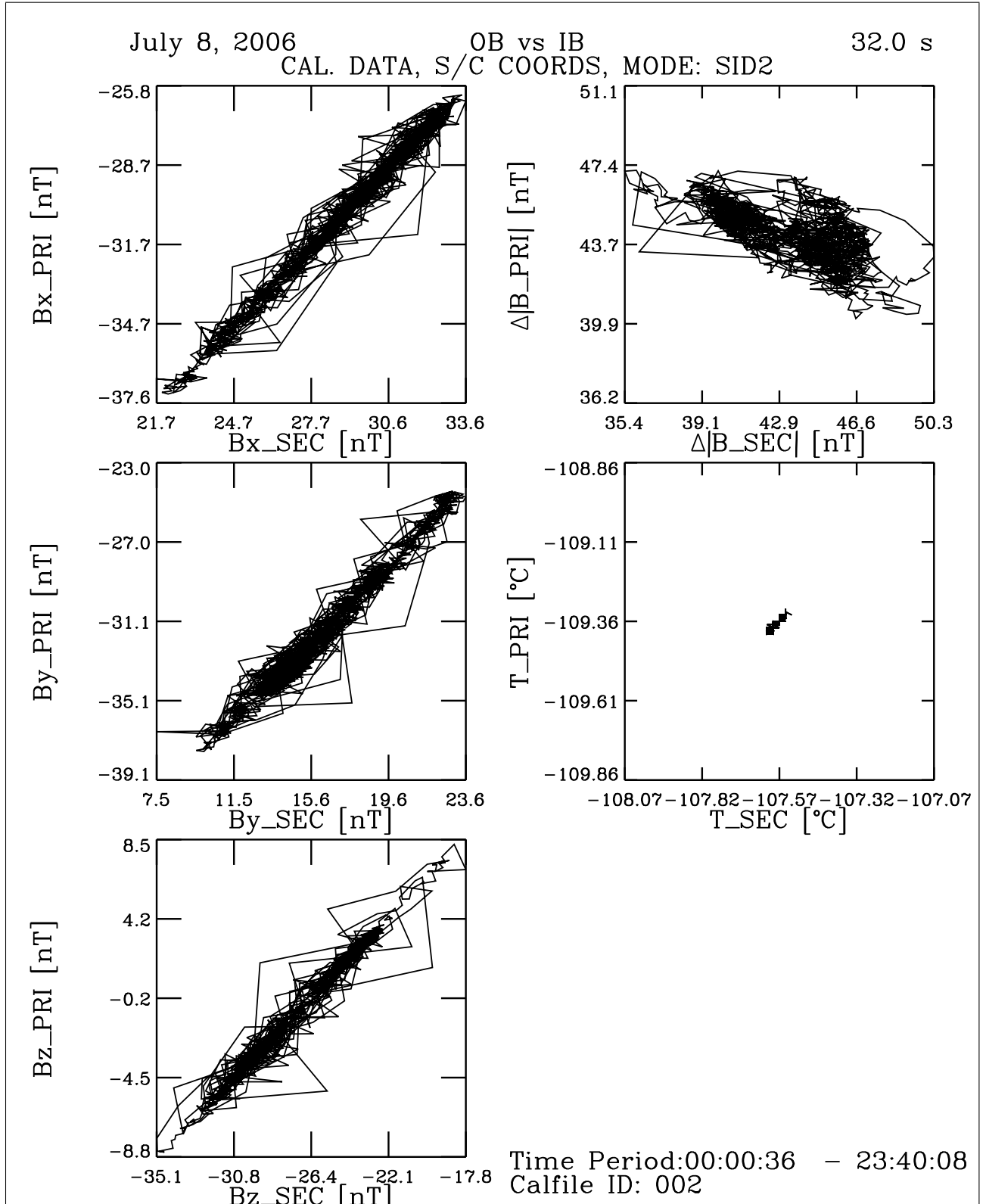


Figure 32: File: RPCMAG060708T0000_CLB_M2_XXYYZZ_P0000_2400_002

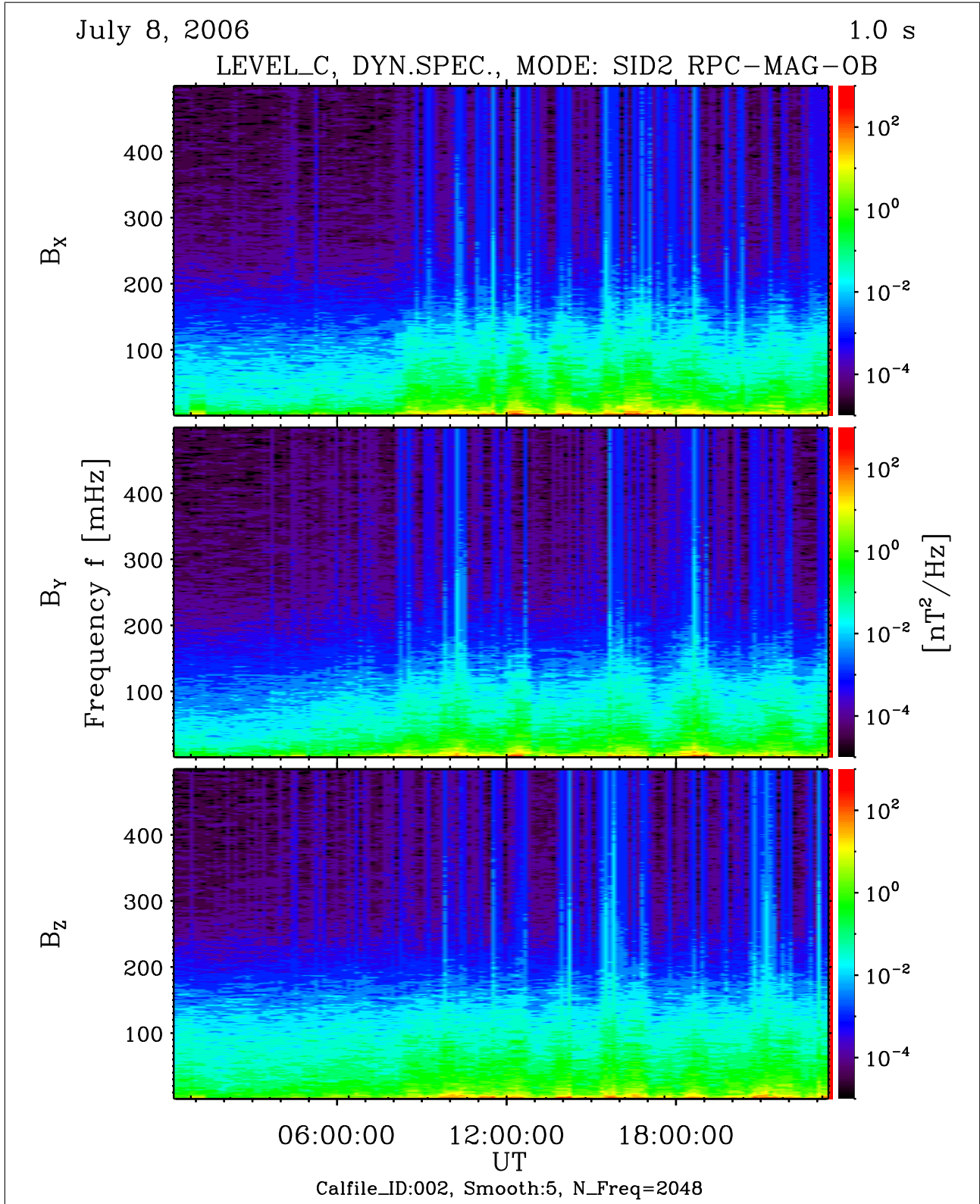


Figure 33: File: RPCMAG060708T0000_CLC_OB_M2_DS0_500_002

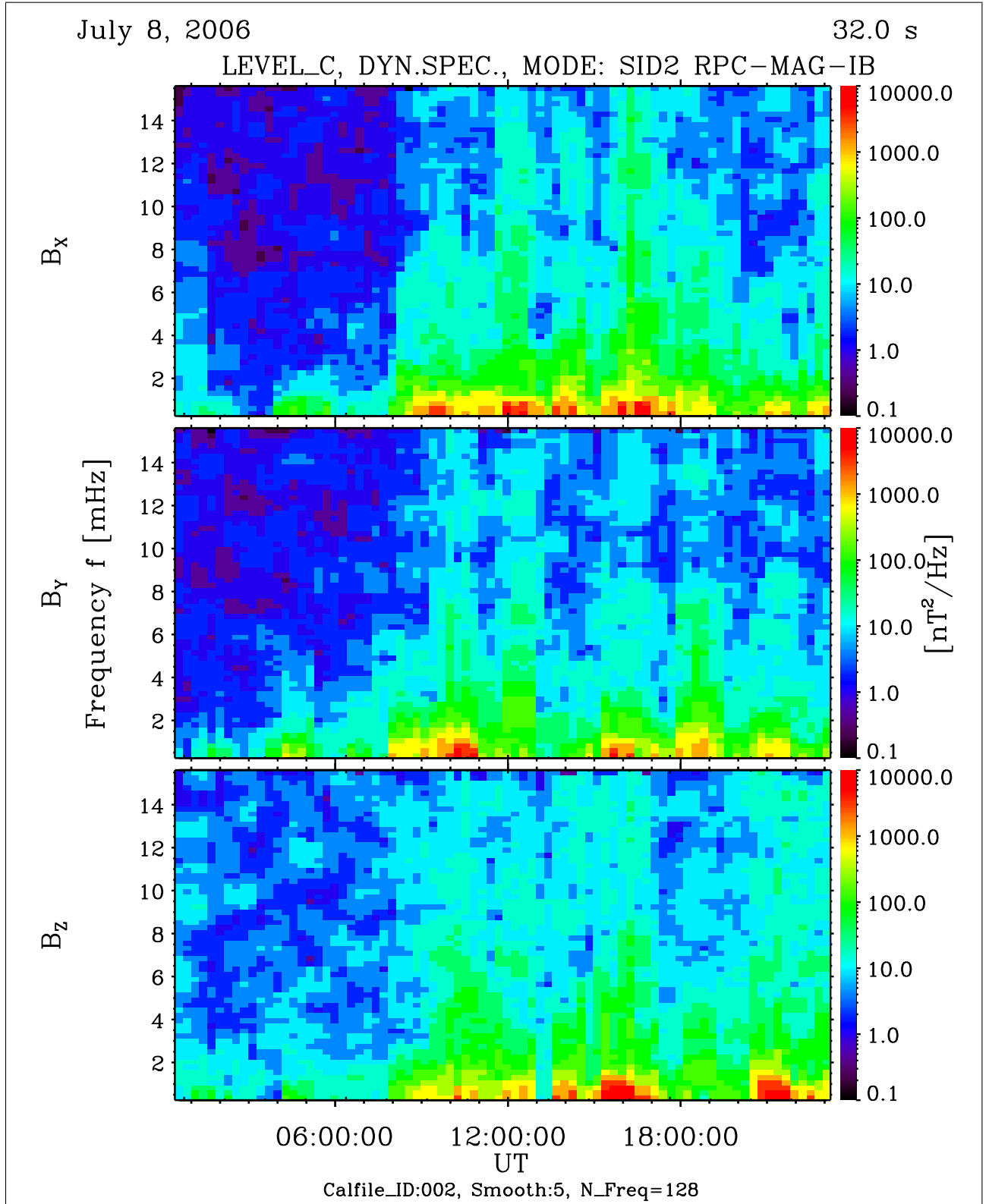


Figure 34: File: RPCMAG060708T0000_CLC_IB_M2_DS0.16_002

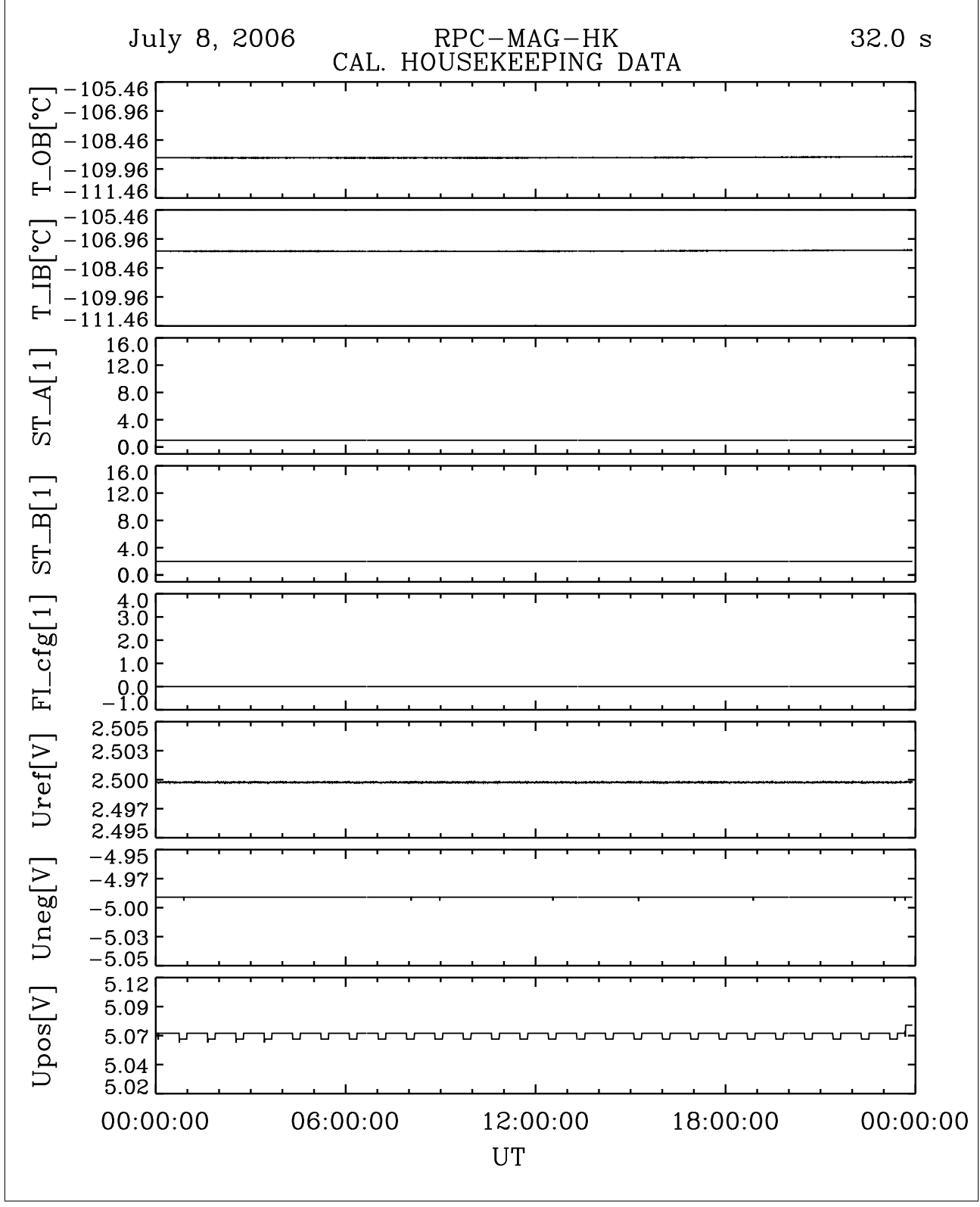


Figure 35: File: RPCMAG060708T0000_CLA_HK_P0000_2400