

SSTD Incoming Inspection Report

Spacecraft/Project **HERSCHEL / SPIRE**

Document Number **SPIRE-RAL-REP- 002883**

Issue **1**

Sub System **FPU Inc JFETs**

Date **25-Apr-07**

Model **CQM**

INCOMING INSPECTION REPORT

FROM
EADS-F
Astrium GmbH. Projekt Herschel. Anlieferstelle : Halle 6052/Aloys Weber. Claude-Dornier- Strasse. D-88090 Immenstaad. Germany

TO
Project Rutherford Appleton Laboratory Space Science and Technology Department Chilton DIDCOT OXON OX11 0QX

Applicable sections	
Containers	Yes
External Visual Inspection	Yes
External Connector	Yes
Documentation	Yes
Verification of Interfaces	No
Extra Comments Sheets	Yes

Drawings / Documents Attached
Photos

INSPECTION CONDUCTED BY

WITNESS BY

NAME
Alan Pearce

DATE
25/04/2007

NAME
Eric Clark (PA)

DATE
25/04/2007

SSTD Incoming Inspection Report

Spacecraft/Project **HERSCHEL / SPIRE**

Document Number **SPIRE-RAL-REP-002883**

Issue **1**

Sub System **FPU Inc JFETs**

Date **25-Apr-07**

Model **CQM**

CONTAINER INSPECTION

TRANSPORT CONTAINERS EXTERNAL CONDITION	REMARKS	Status
Mechanical damage to container fasteners, locks, clips or handling provisions		None
Security / Locking Fitted		Checked
Markings for destination and description		Checked
Warning labels relating to handling lifting and stacking limits		Checked
Any additional Comments		None

TRANSPORT CONTAINERS INTERNAL CONDITION	REMARKS	Status
Check Mounting fixtures fitted internal packaging		Checked
Internal padding / packaging required		Checked
Mounting provisions secure		Checked
Any additional Comments		None

ENVIROMENTAL MONITORS									
Temp Monitors		Humidity Monitors		Shock Sensors Triggerd Information					
Fitted: <input type="text"/>		Fitted: <input type="text" value="Yes"/>		5g	10g	15g	25g	50g	
Condition: <input type="text"/>		Condition: <input type="text" value="Satisfactory"/>		X Axis	OK	N/F	OK	OK	N/F
				Y Axis	Minus	N/F	OK	OK	N/F
				Z Axis	Minus	OK	N/F	OK	N/F

SSTD Incoming Inspection Report

Spacecraft/Project **HERSCHEL / SPIRE**

Document Number **SPIRE-RAL-REP-002883**

Issue **1**

Sub System **FPU Inc JFETs**

Date **25-Apr-07**

Model **CQM**

INSTRUMENT VISUAL INSPECTION

CHECK LIST	REMARKS	RESULTS
Contents against shipping list		Correct
Instrument label		Correct
Note status of external contamination	A few small particles on each face seen under UV Light, otherwise very clean	See Remarks
Degradation of paintwork or Coating?		None
Fasteners correctly locked?		Correct
Check protective covers are correctly labelled and fitted?	RED TAG Item and ESD covers all fitted and intact	See Remarks
Additional Comments		None

SSTD Incoming Inspection Report

Spacecraft/Project **HERSCHEL / SPIRE**

Document Number **SPIRE-RAL-REP-002883**

Issue **1**

Sub System **FPU Inc JFETs**

Date **25-Apr-07**

Model **CQM**

INSPECTION OF ALL CONNECTORS

CHECK LIST	REMARKS (LIST CONNECTOR NUMBERS)	RESULTS
Pin Alignment	J24 and J30 pins not aligned	See remark
Damaged Sockets		None
Internal Debris		N/A
Connector Covers fitted	Removed for inspection and then repositioned.	See remark
Connector Savers Fitted	Except on JFETs	None
EMC Covers Fitted		N/A
RED Tag Item / Green Tag Items fitted	In place not removed during inspection	See remark
Additional Comments	Some Connector Gaskets cracked (ref to NCR 171 on PFM)	See remark

SSTD Incoming Inspection Report

Spacecraft/Project	HERSCHEL / SPIRE	Document Number	SPIRE-RAL-REP-002883	Issue	1
Sub System	FPU Inc JFETs	Date	25-Apr-07	Model	CQM

DOCUMENTATION CHECK LIST

Check	REMARKS	RESULTS
End Item Data Pack	Volumes 1 & 3 returned with CQM Volume 2 was not returned by EADS Ottobrunn	Yes
Transportaion Documents		Yes
Packing un- Packing instructions	CQM was packed by RAL SSTD personnel at Ott	N/A for this inspectio
Additional Comments		

Verification of Interfaces

Mechanical interface: dimensions specified in the interface control documents such as mass, flatness of surfaces, location of fixing holes and overall dimensions should be measured accurately and recorded. Record Test Report Number, or confirm that measurement result is included in delivery documentation, (EIDP).

INSPECTION / TEST REPORT NUMBER	CHECKED N/A for this inspection
--	--

Electrical interfaces: verifying the location and types of connectors against interface control document is normally carried as part of mechanical verification, confirm this has been done. Functional testing: final functional test report number should be noted.

INSPECTION / TEST REPORT NUMBER	CHECKED N/A for this inspection
--	--

SSTD Incoming Inspection Report

Spacecraft/Project	HERSCHEL / SPIRE
--------------------	------------------

Document Number	SPIRE-RAL-REP-002883
-----------------	----------------------

Issue	1
-------	---

Sub System	FPU Inc JFETs
------------	---------------

Date	25-Apr-07
------	-----------

Model	CQM
-------	-----

EXTRA COMMENT SHEET

The CQM is being returned to be up graded to the Flight Spare

Instrument shipped with three layers of dust protective wrap.
Z axis 5G minus trip activated - all others not tripped.

Pins out of alignment in connectors J24 and J30.

Black light inspection of exterior showed no significant contamination - one or two dust specs otherwise very Clean

CQM in Transit case In Prep Area (EIDP in second container not shown)



Transit case Top Internal view (In Prep Area)



CQM on Transit container Base Triple Bagged (In Prep Area)



First Bag removed prior to taking into Clean Room



Humidity detector OK



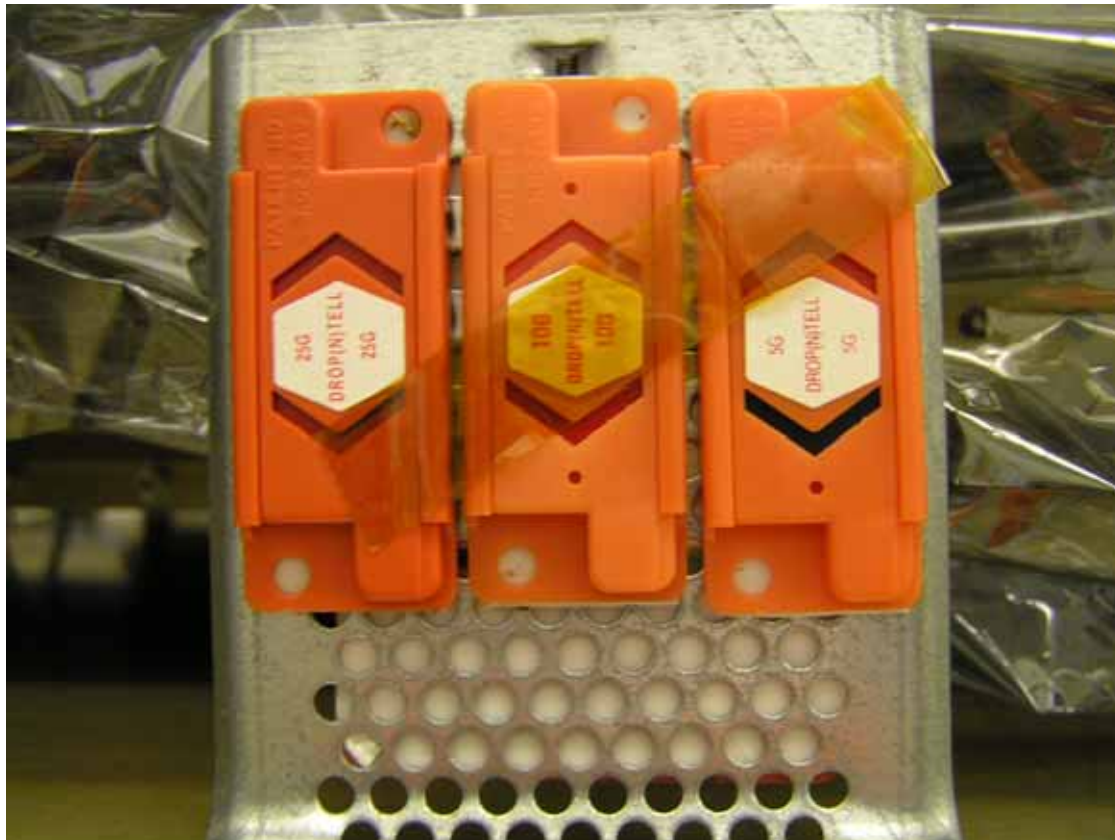
Second Bag removed prior to entering Class 100 Tunnel in Clean Room



VIEW of SHOCK Monitors 25g, 15g, 5g X axis all OK



VIEW of SHOCK Monitors 25g, 10g, 5g Z axis 5g Minus Tripped



VIEW of SHOCK Monitors 25g, 15g, 5g Y axis 5g Minus Tripped.



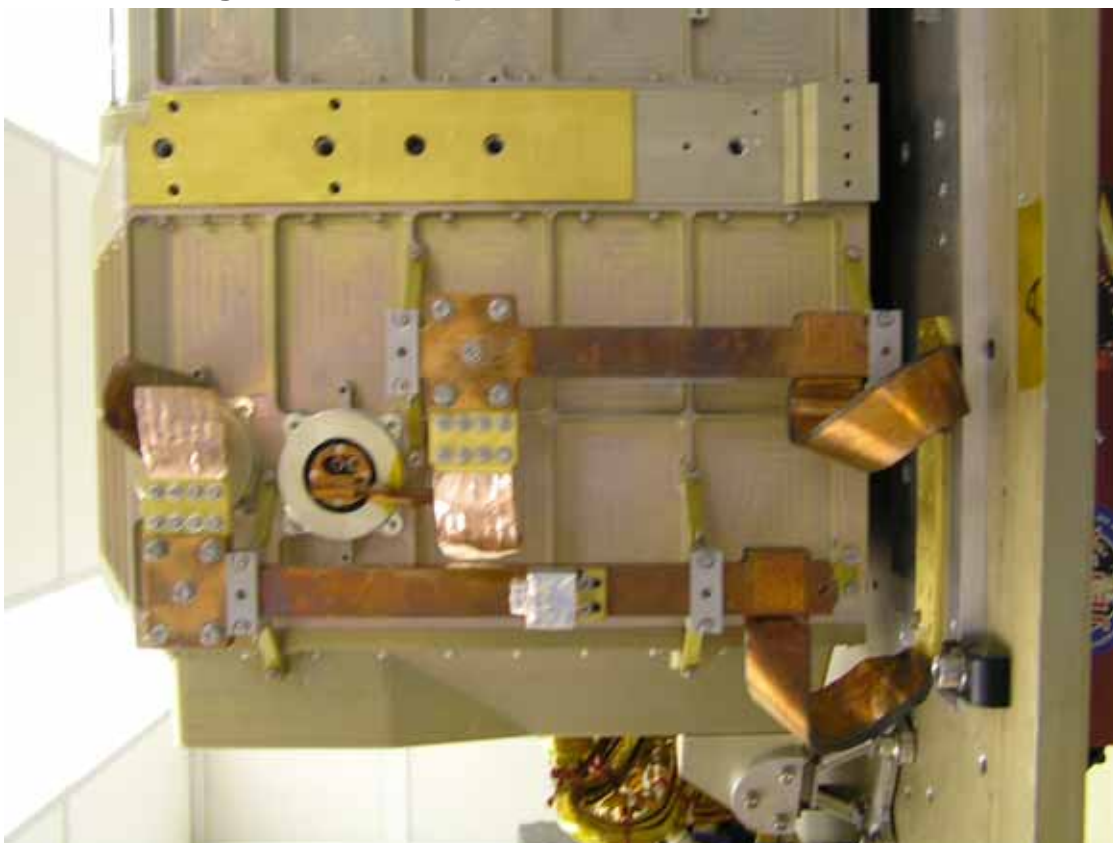
Side view showing position of Shock detectors, JFET's and ESD connector covers fitted



Side view showing Thermal straps & JFET's with ESD connector covers fitted



End view showing Thermal straps



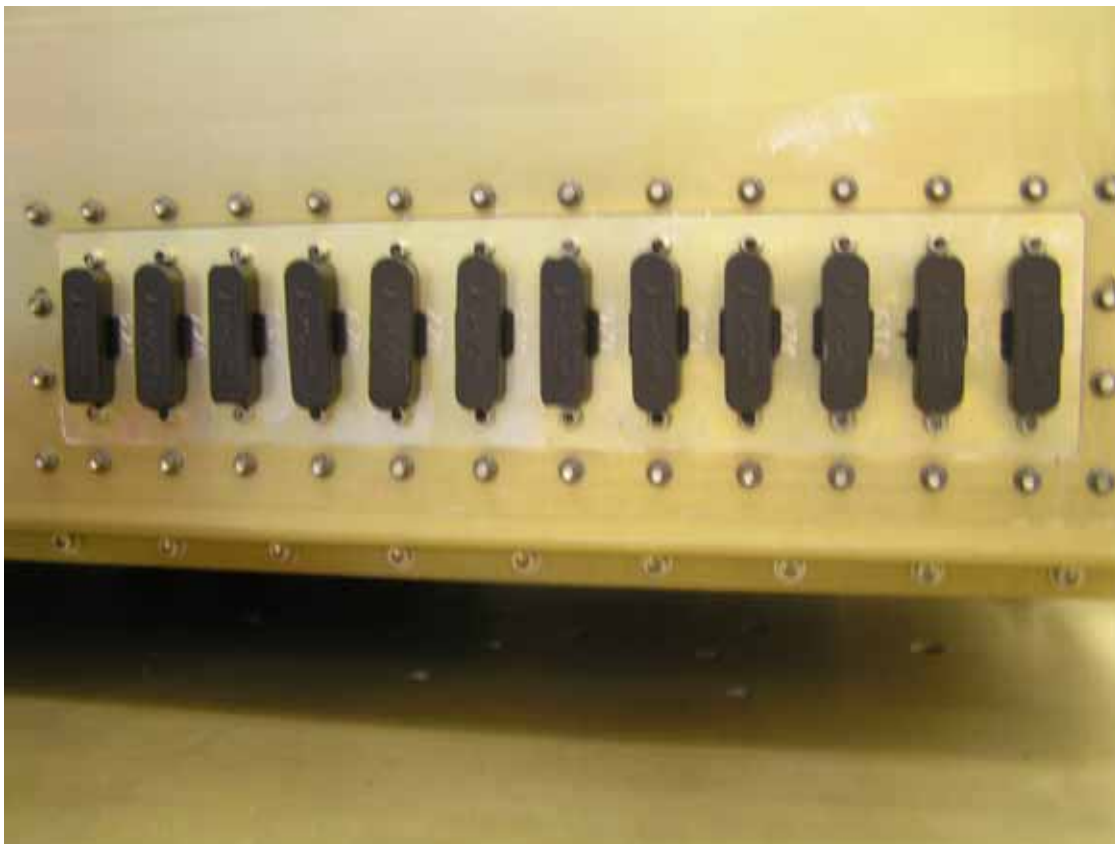
Opposite End Showing ESD strap fitted and Red Tag item Top Right



RED TAG Label on aperture cover



ESD Connector Covers in Place



**J24- 7th pin down on left hand side has pin out of optimum alignment
J30 Not shown has a similar problem with a pin out of alignment**

