

SPIRE-AST-COM-002225



Telefax

EADS Astrium

+31 30 254 0860
SRON, Utrecht, NL
C. K. Wafelbakker, P. v. Leeuwen

+49 89 30000 3272
MPE, Garching, D
O. H. Bauer, R. Katterloher

+44 1235 44 6667
RAL, Oxfordshire, UK
E. C. Sawyer, B. Swinyard

Copy to:

+33 4 92 92 3010
ALCATEL, Cannes, F
B. Collaudin, G. Doubrovik

+31 71 565 5244
ESTEC, Noordwijk, NL
G. Crone, A. Heske, C. Scharmberg

From:
+49/(0)7545/8-4243
Name:
Siegmond Idler
Department:
AED 65
Telefon:
+49/(0)7545/8-4671
E-Mail:
siegmond.idler@astrium.eads.net
Reference:
HP-ASED-FX-0704-04
Date:
19.11.2004

Subject: Herschel Main Beam Entrance Baffles Assembly

Dear All,

Please find attached the updated drawings of the Herschel Main Beam Baffles Assembly (HP-2-ASED-ID-0062-01-0C and -02-0C).

The drawings will be part of the next update of the IID-A, Annex 6. The drawing reflects the requirements with respect to the instruments field of view as specified in the IID-Bs.

The pdf files of the drawings have been sent in parallel per e-mail HP-ASED-EM-0893-04.

Page 1 of 1

EADS Astrium GmbH
Am der Bundesstraße 31
89090 Immenstaad
Deutschland/Germany
Telefon: +49 (0)7545 8-01
Telefax: +49 (0)7545 8-4411



From: Siegmund Iidler
Ref.: HP-ASED-FX-0684-04
Date: 11.11.2004
-2-

You are kindly requested to check and comment.

Kind regards

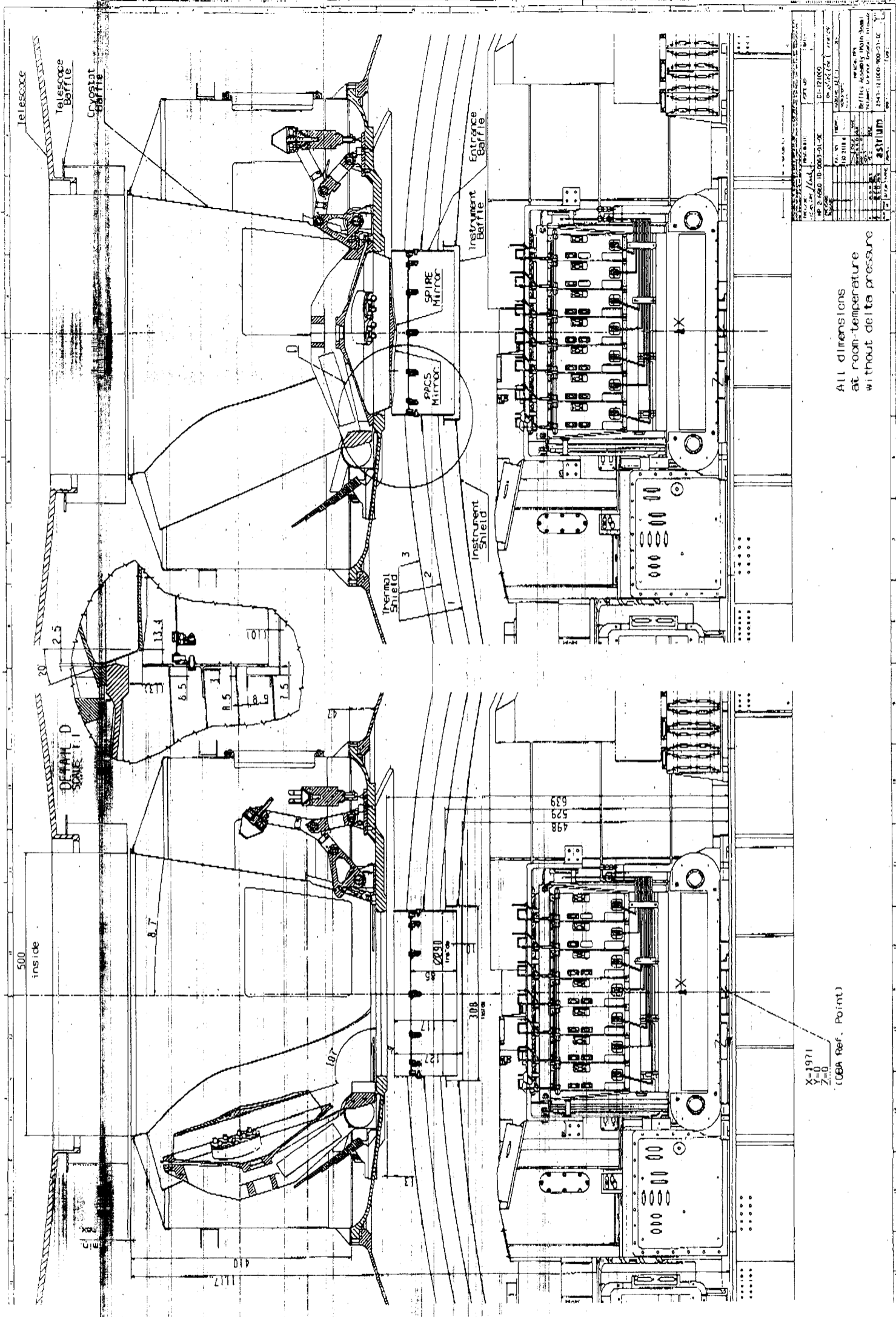
EADS ASTRIUM

A handwritten signature in black ink, appearing to read "V. W. Ruhe".

V. W. Ruhe

A handwritten signature in black ink, appearing to read "A. J. Kroeker".

i. A. J. Kroeker



Project	ASTRIUM
Part No.	NUM640
Rev.	0003
Issue Date	22/11/2002
Drawn By	[Name]
Checked By	[Name]
Released By	[Name]
Part Name	ASTRIUM
Material	ASTRIUM
Quantity	1
Unit	mm
Scale	1:1
Notes	

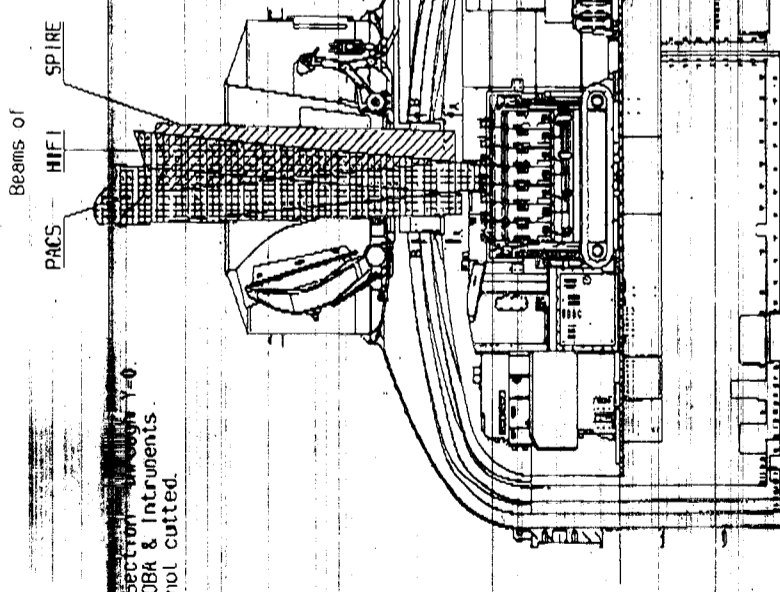
All dimensions
at room-temperature
without delta pressure

Drawing Change List

HP-2-ASED-ID-0063-01-0C: Baffles Assembly (Main Beam)

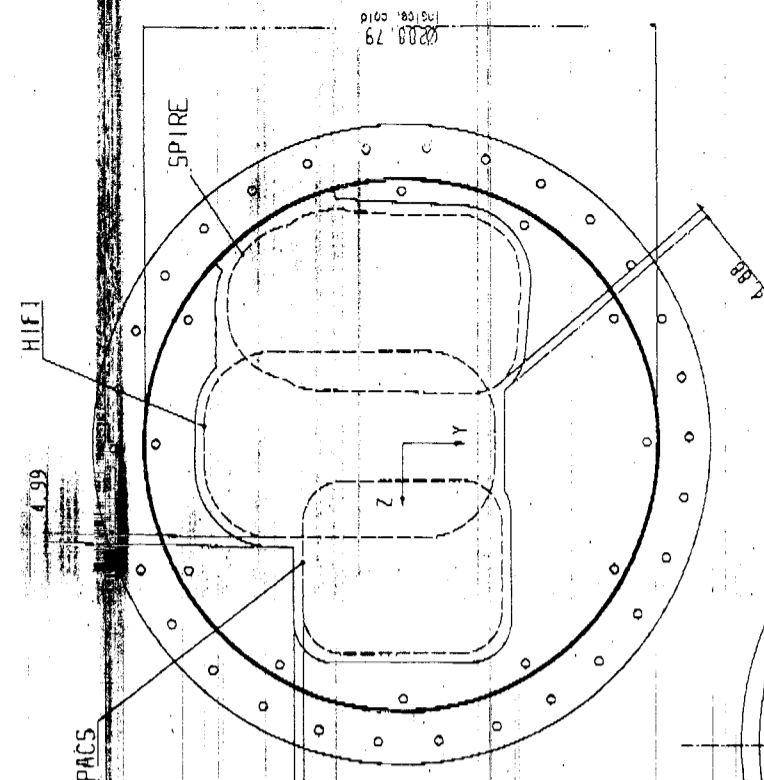
HERSCHEL
14.10.2004

Related Drawing Section	Objective	Grid location	Actual Status Issue C	Previous Status Issue B
All Views	Updated	-	Entrance Baffle implemented	

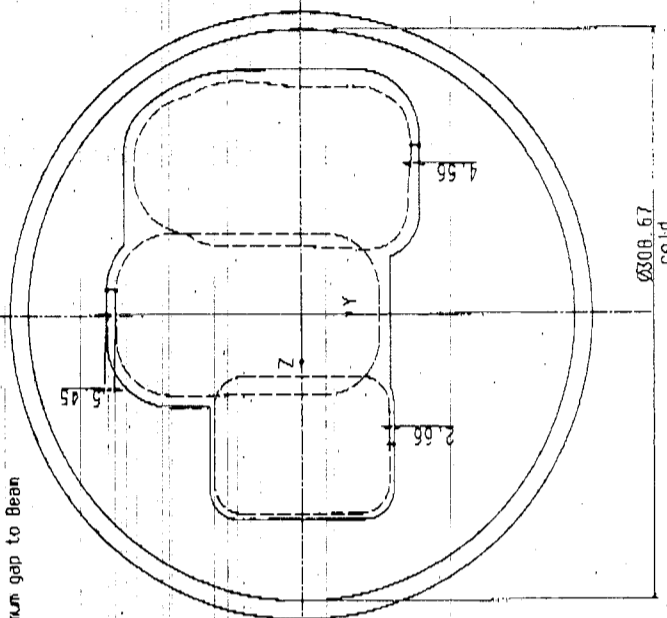


All-Geometry consider Orbit Case conditions (cold).

SECTION B-B
Entrance Baffle (A)
minimum gap to Beam



SECTION A-A
Instrument Baffle (A)
minimum gap to Beam



Input used for CATIA definition of Instrument Beams in Orbit Case:
HIFI: 110 B, Iss. 3, Rev. 2
PACS: Fax Subject: Beam at Cryobaffle 2
Date: 18.12.2003
Date: 17.11.2003
SPIRE: RAL-NOT-001242
Date: 18.04.2002

- Beam properties considered in this table:
- 1) HIFI: Is not diffraction sensitive, no system level alignment included
 - 2) PACS: Diffraction considered, instr. internal alignment and system level alignment included.
 - 3) SPIRE: Diffraction considered, System level alignment included
 - 4) In Orbit Case, nominal assembly values shown. This means possible assembly deviations and manufacturing tolerances not considered.

NO	REV	DATE	BY	CHK	APP	DESCRIPTION
1	1	18.12.2003				Initial release
2	2	17.11.2003				Update of SPIRE beam data
3	3	18.04.2002				Update of HIFI beam data

HERSCHEL Drawing Change List Page 2 of 2

HP-2-ASED-ID-0063-02-0C: Baffles Assembly (Main Beam)

14.10.2004

Related Drawing Section	Objective	Grid location	Actual Status Issue C	Previous Status Issue B
All Views	Updated		Entrance Baffle implemented	
New View	Main Beam sections		Entrance Baffle Section added	
All Sections	Dimension added		minimum clearance of aperture to beam added	
	Note changed	E3	Reference for PACS & SPIRE Beam definition updated	