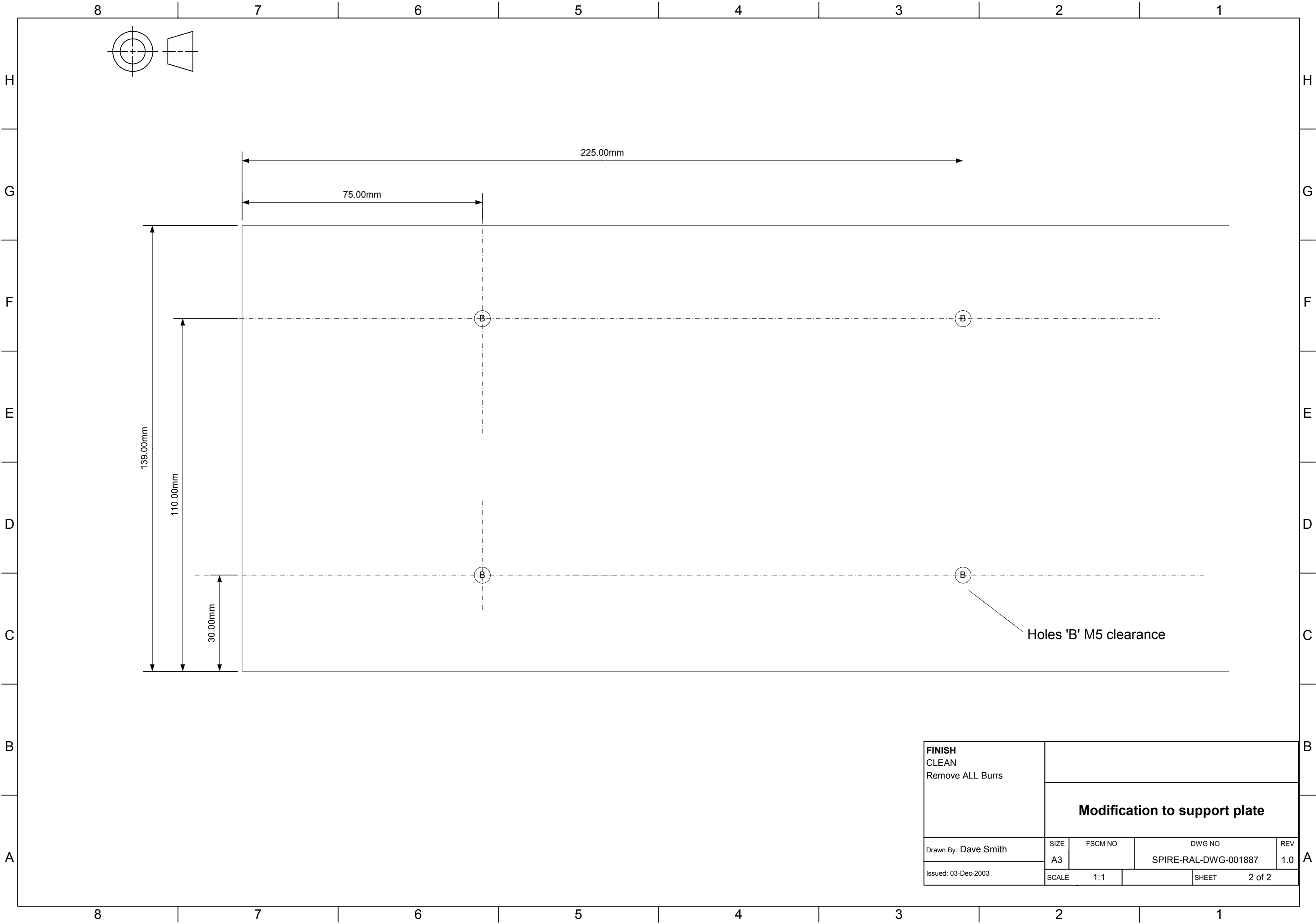
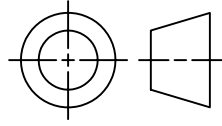


Holes 'A' M4 tapped

Holes 'B' M5 tapped  
Position to be marked off when aligning cold blackbody to FPU

4mm thick Aluminium Plate

<b>FINISH</b> CLEAN Remove ALL Burrs	<b>Cold Blackbody Interface Plate</b>			
	Drawn By: Dave Smith SIZE A3	FSCM NO	DWG NO SPIRE-RAL-DWG-001887	REV 1.0
Issued: 03-Dec-2003	SCALE 1:1	SHEET 1 of 2		



Holes 'B' M5 clearance

<b>FINISH</b> CLEAN Remove ALL Burrs	<b>Modification to support plate</b>			
	Drawn By: Dave Smith SIZE A3	FSCM NO	DWG NO SPIRE-RAL-DWG-001887	REV 1.0
Issued: 03-Dec-2003	SCALE 1:1	SHEET 2 of 2		