

SPIRE-RAL-NOT-001816
Definition of Optically Black Surfaces on SPIRE
Douglas Griffin

To: PCH, BMS

Issue 0.1 - Friday, 19 September 2003

Initial issue

Issue 0.2 – Friday, 19 September 2003 (a bit later)

Figure 3 added

Issue 0.3 – Monday 29 Sept. 2003

Views of tiles on structure added. (Figures 4 through 7)

Detailed drawings of two tile types that will be used to qualify the process. (Figures 8 through 9)

Figure 1 - View of cold stop and mount from inside the Photometer Detector box detailing the surface to be coated with optical black. 2

Figure 2 - Extra details of keep out zone. 3

Figure 3 - SM12 A/B details 4

Figure 4 - General view of Black tiles around CM3 5

Figure 5 - Tiles on Phot. cover spine 6

Figure 6 - Tiles on Phot. cover spine 7

Figure 7 - Tiles on Phot. Outer cover 8

Figure 8 - Tile Type 1. Glued on outside cover 9

Figure 9 - Tile type 2. Glued on outside cover 10

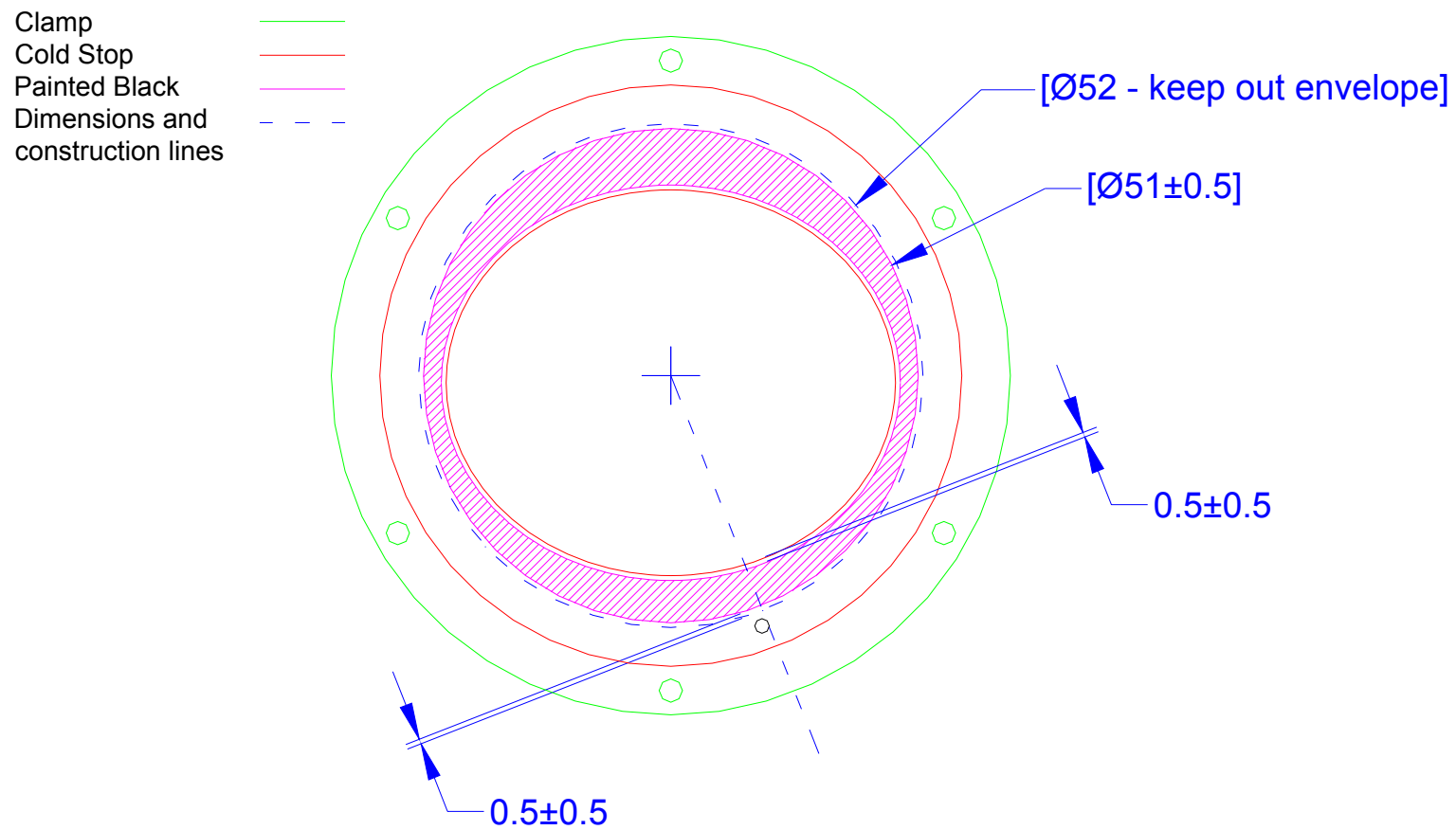
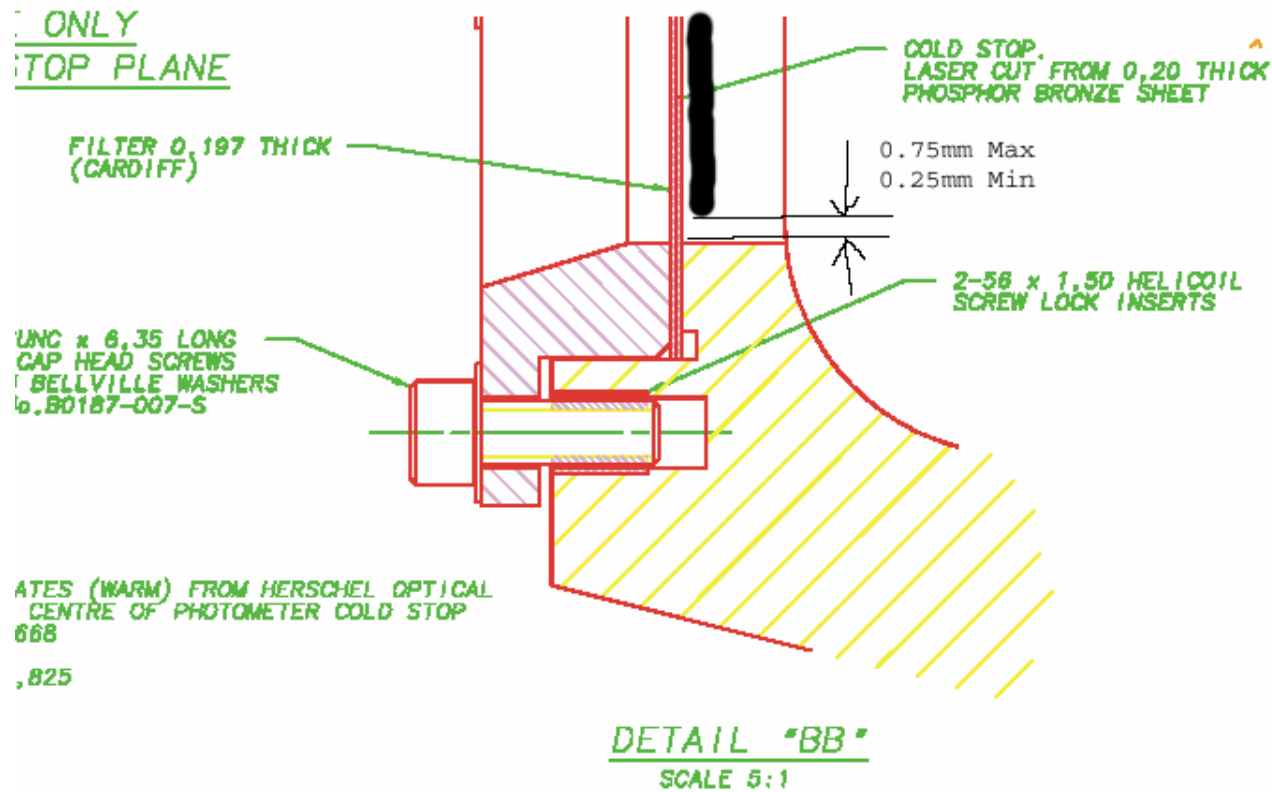


Figure 1 - View of cold stop and mount from inside the Photometer Detector box detailing the surface to be coated with optical black.



DEPARTMENT OF SPACE AND CLIMATE PHYSICS
UNIVERSITY COLLEGE LONDON
MULLARD SPACE SCIENCE LABORATORY, HOLMBURY ST. MARY

Figure 2 - Extra details of keep out zone.

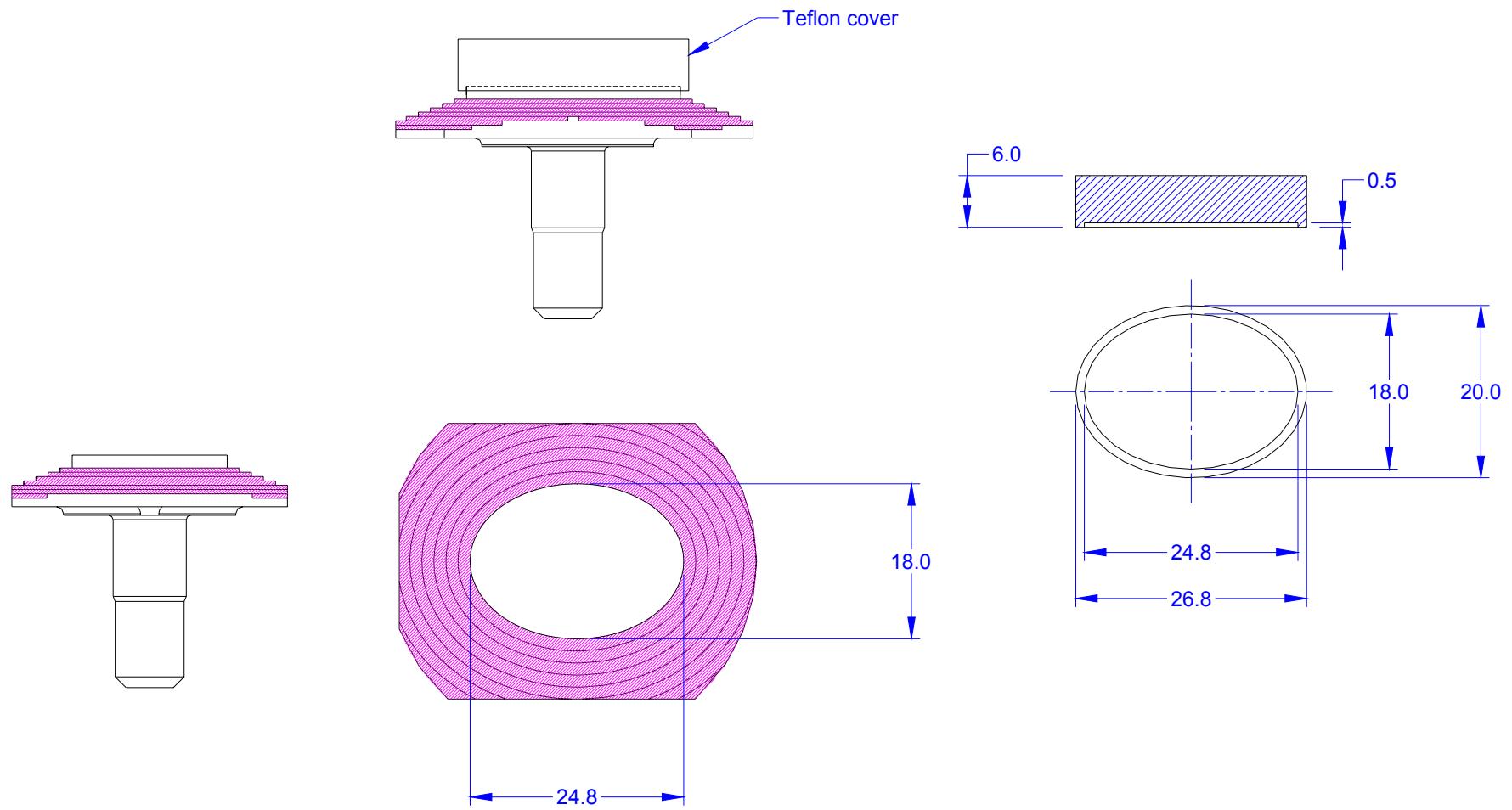


Figure 3 - SM12 A/B details

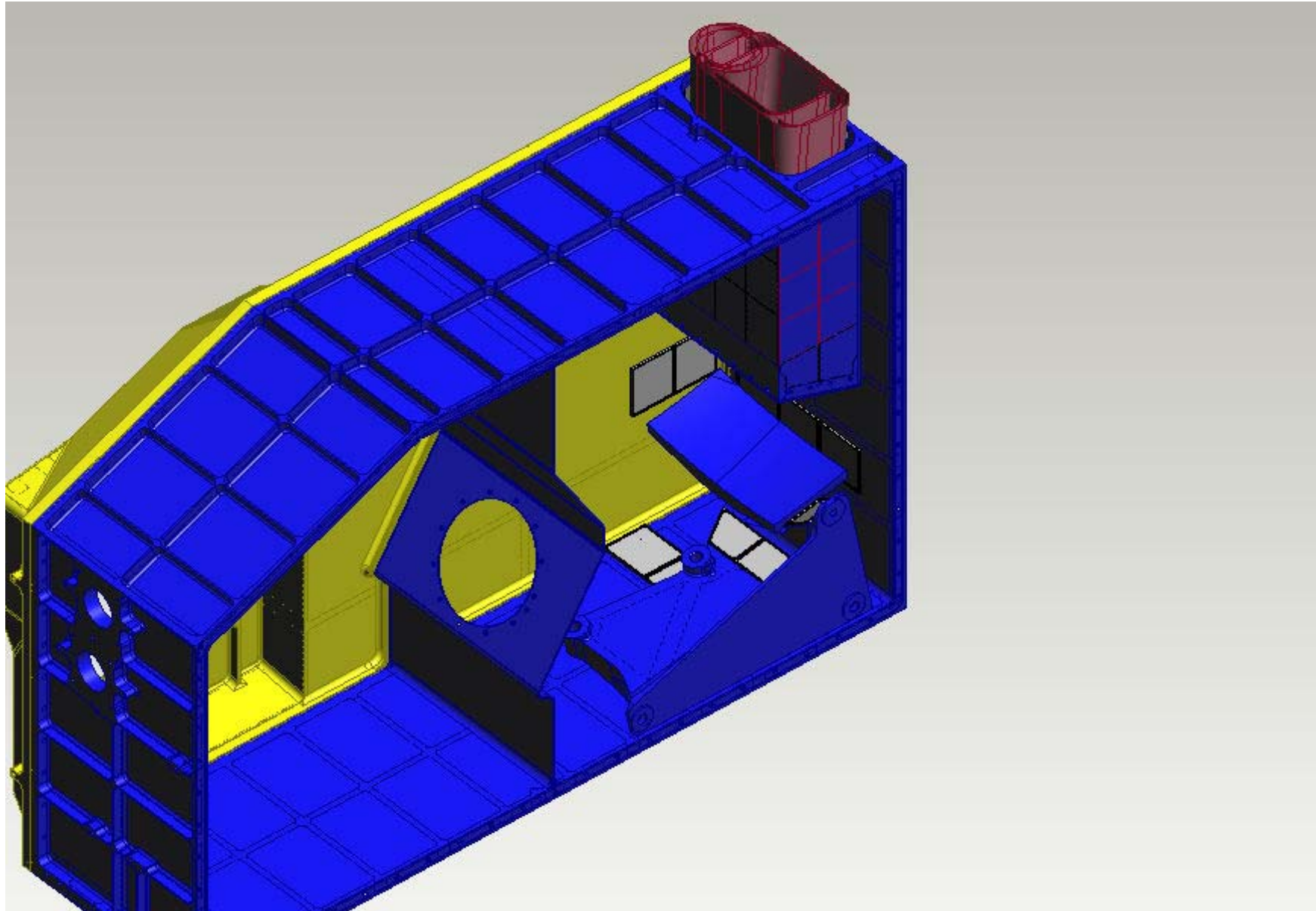


Figure 4 - General view of Black tiles around CM3

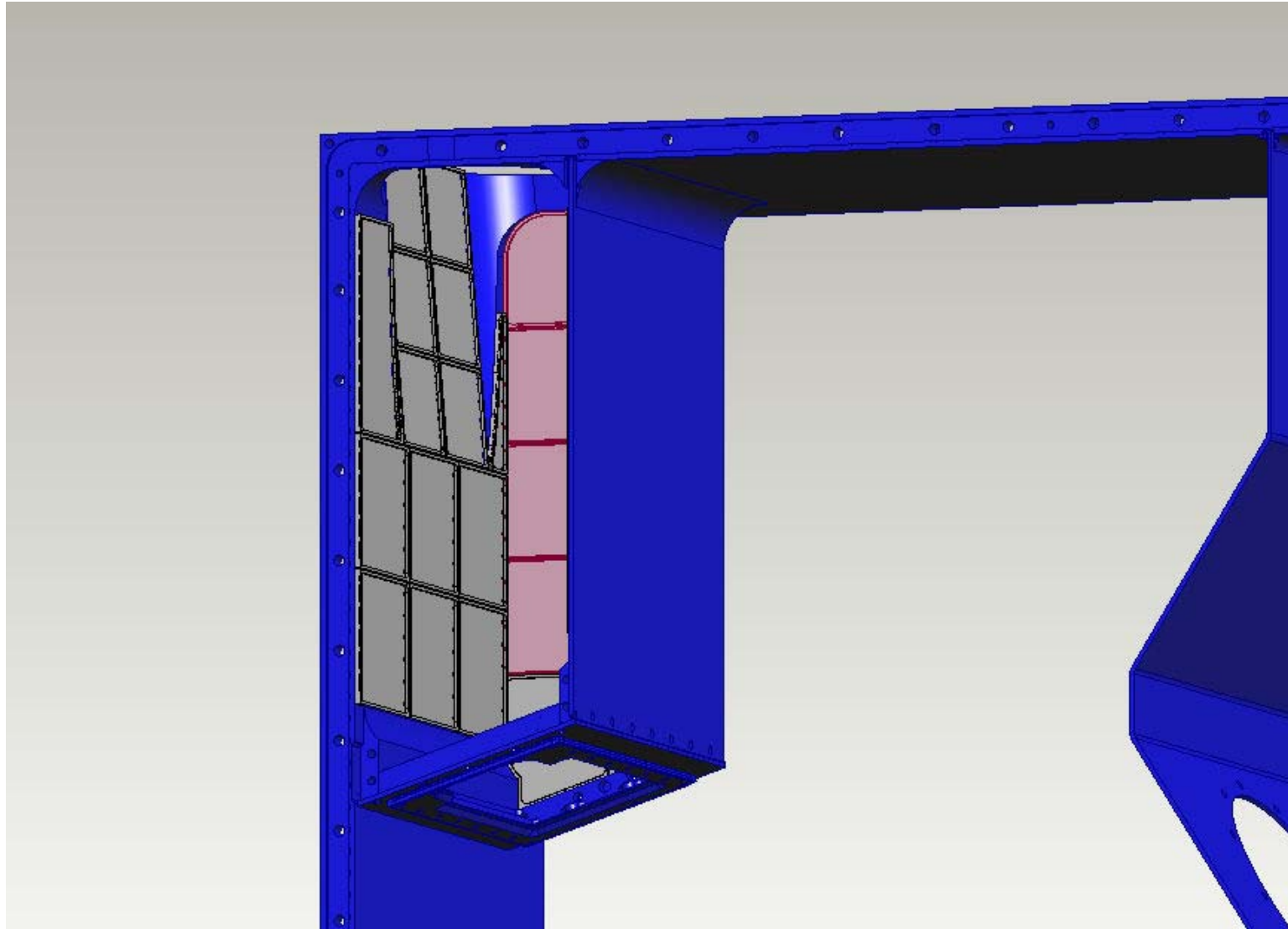


Figure 5 - Tiles on Phot. cover spine

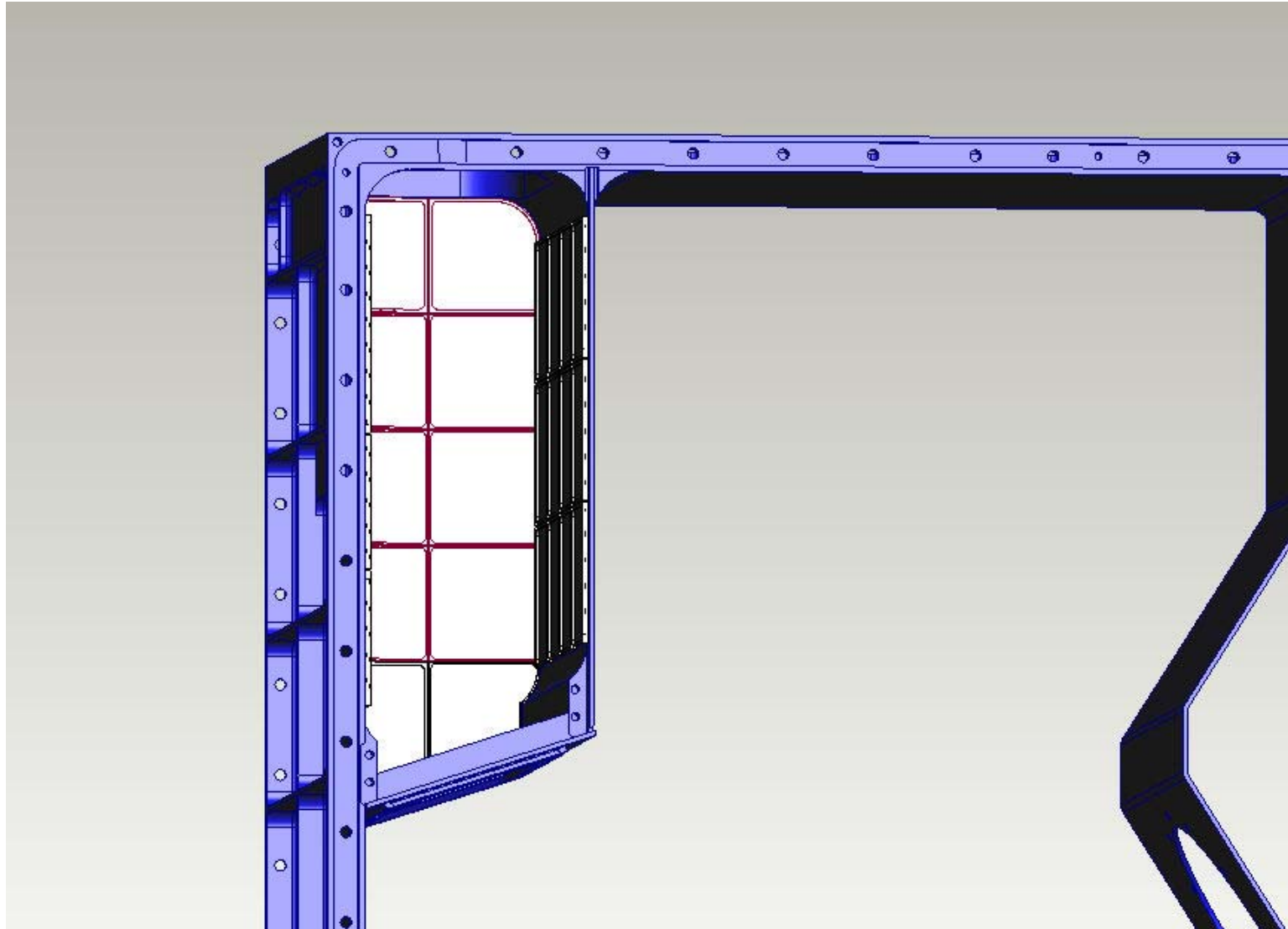


Figure 6 - Tiles on Phot. cover spine

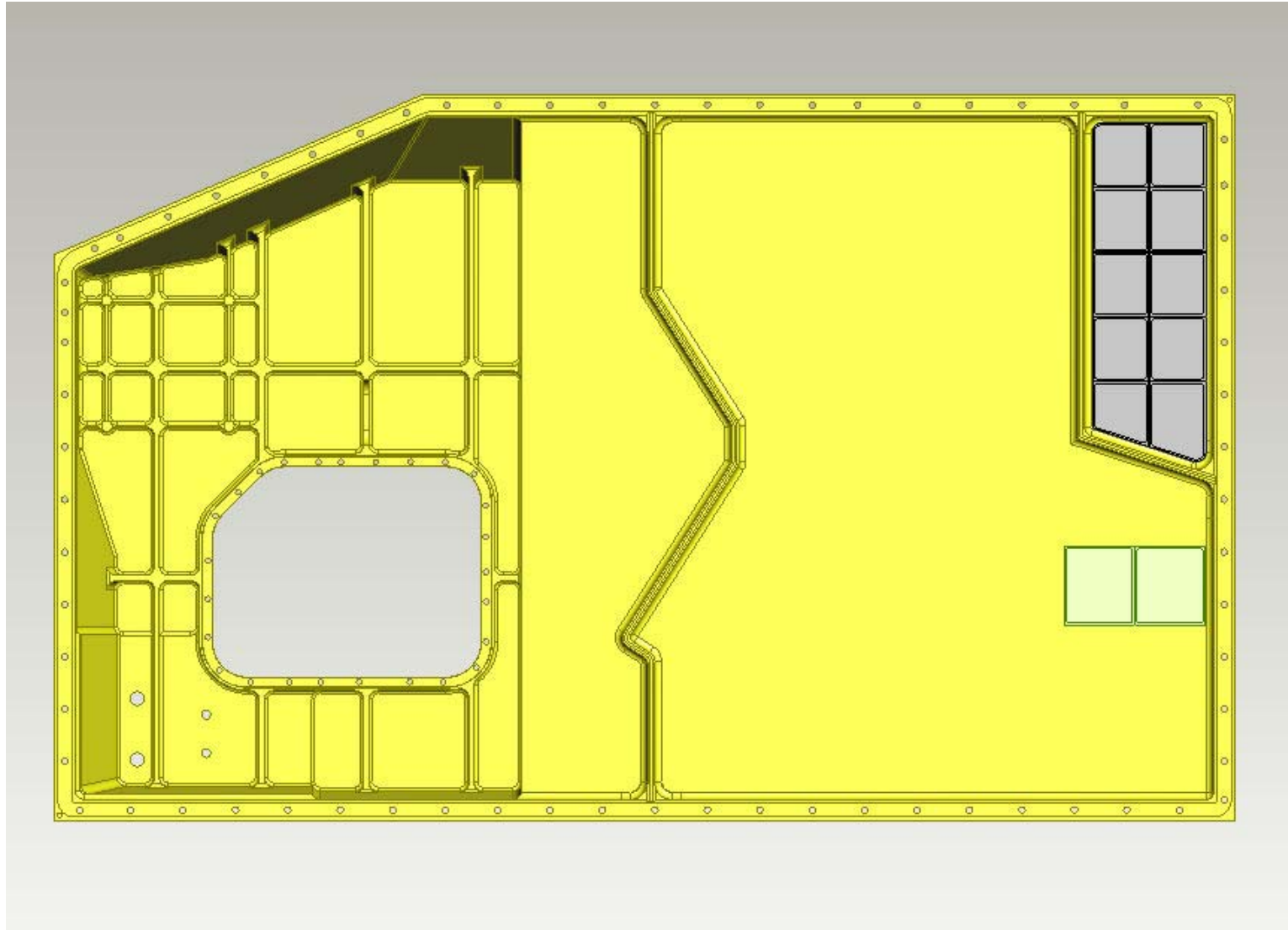


Figure 7 -Tiles on Phot. Outer cover

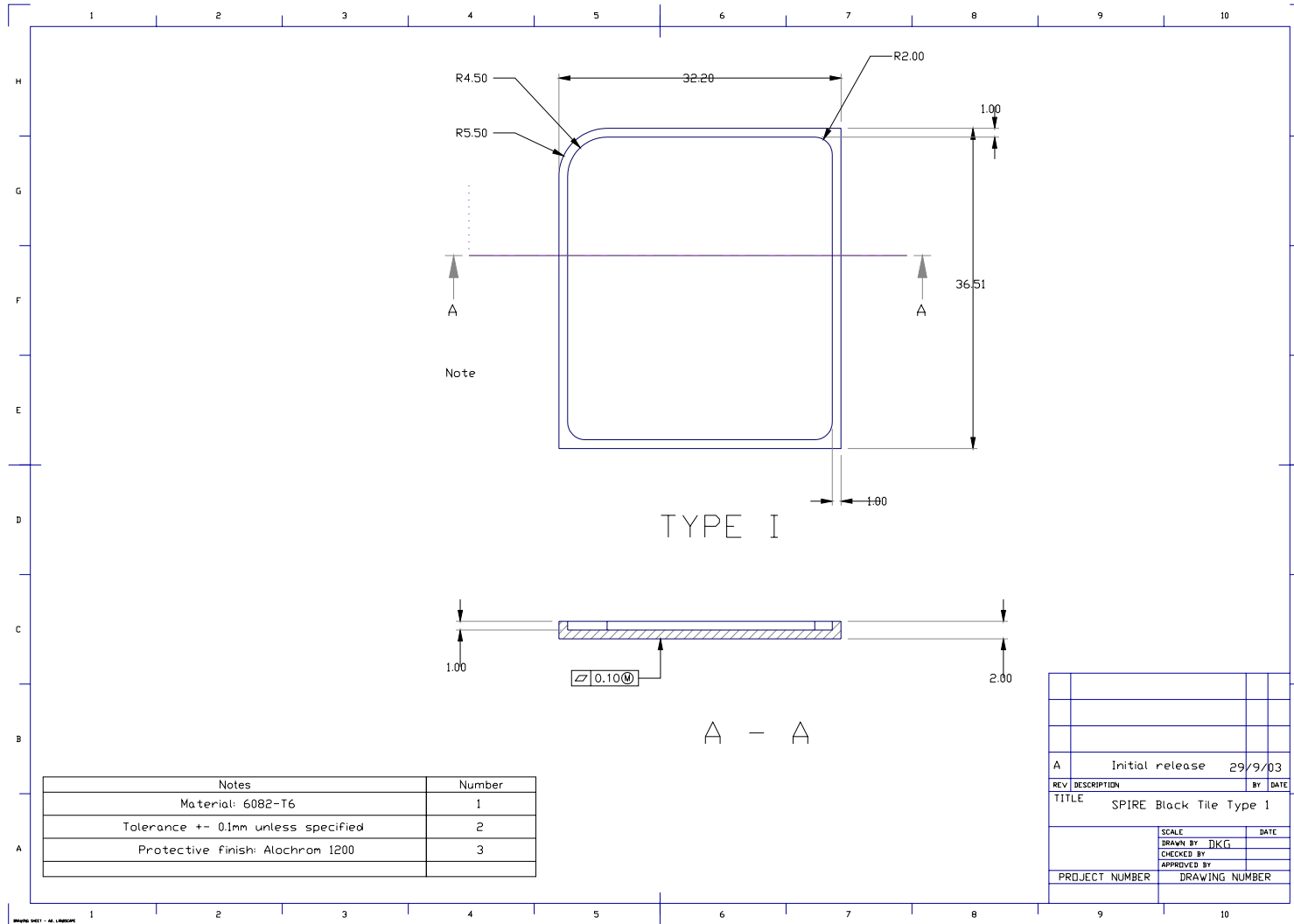


Figure 8 - Tile Type 1. Glued on outside cover

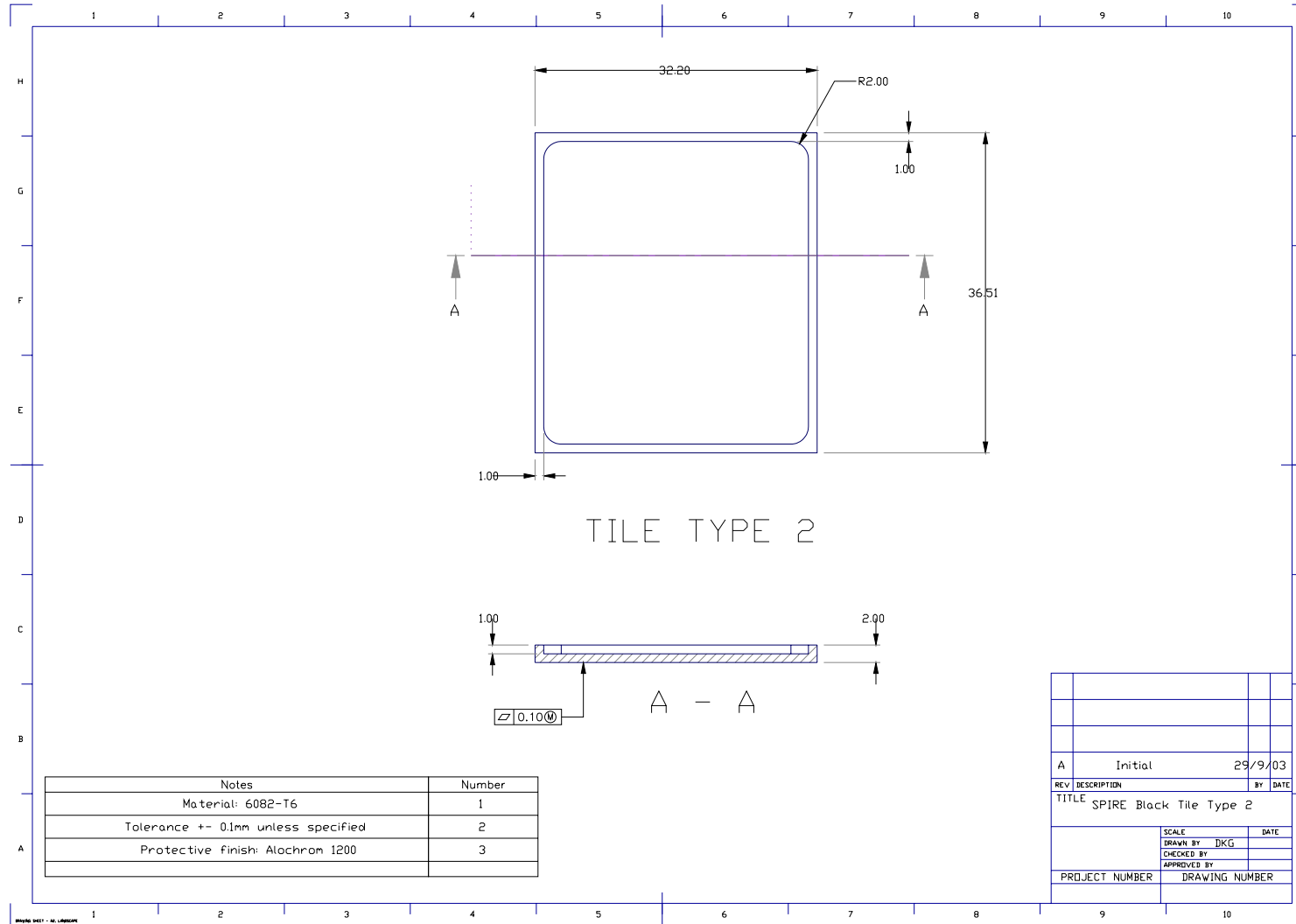


Figure 9 - Tile type 2. Glued on outside cover