

# Simple Test

Connect Cables Between DRCU simulator and DPU simulator

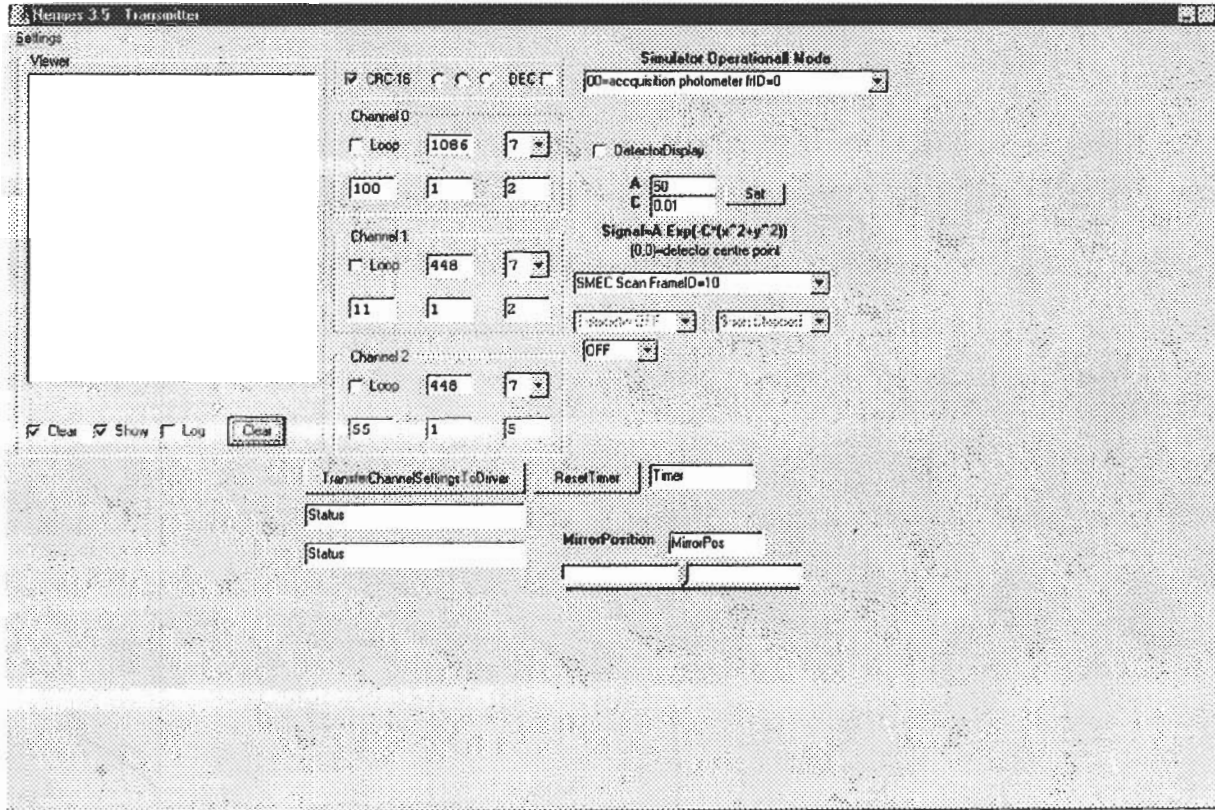
Power On Both Computers

Password On Both Computers are: faxel (User: Administrator)

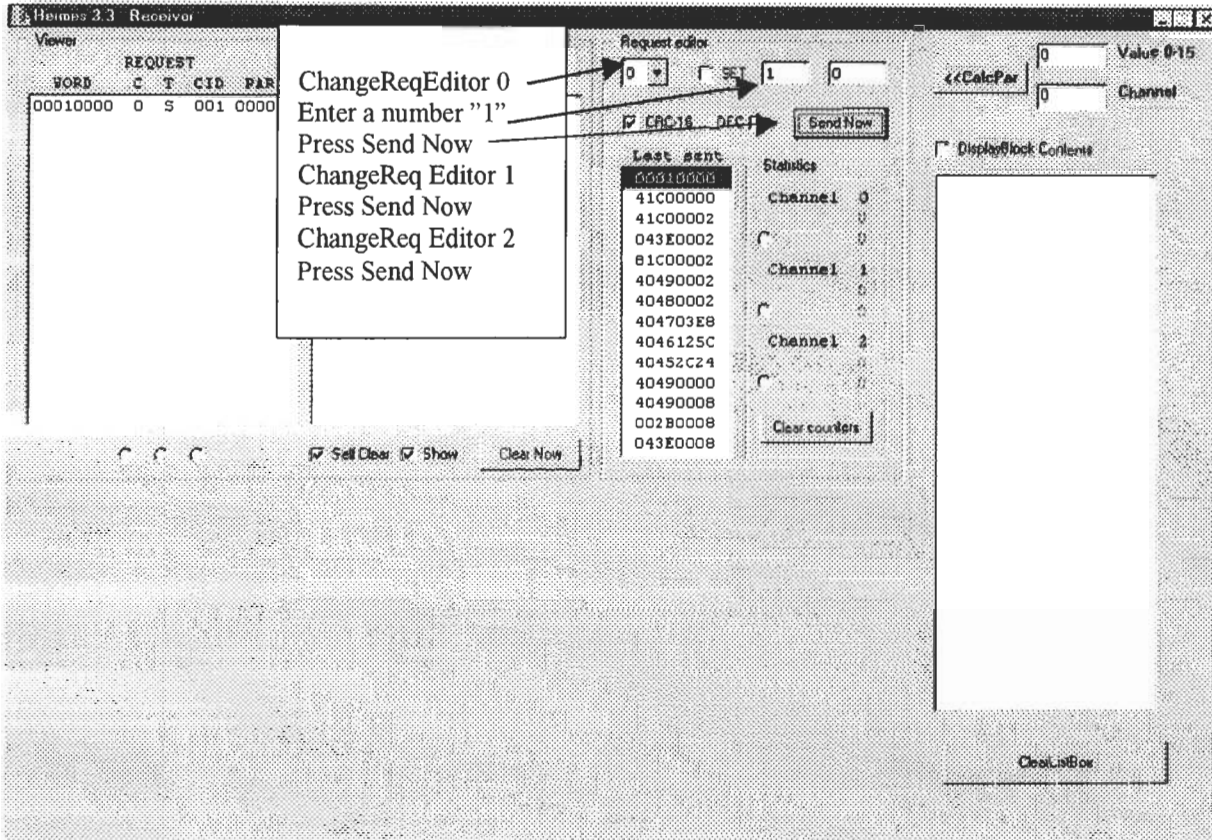
If some hardware message would appear on the DPU simulator press ctrl +d to close it. OK

- A. Start the version DRU simulator version 3.4 or 3.5 by double clicking on the icon Transmit3.5 or Transmit3.4
- B. Start the receiver on DPU simulator computer by double clicking on Receiver.exe

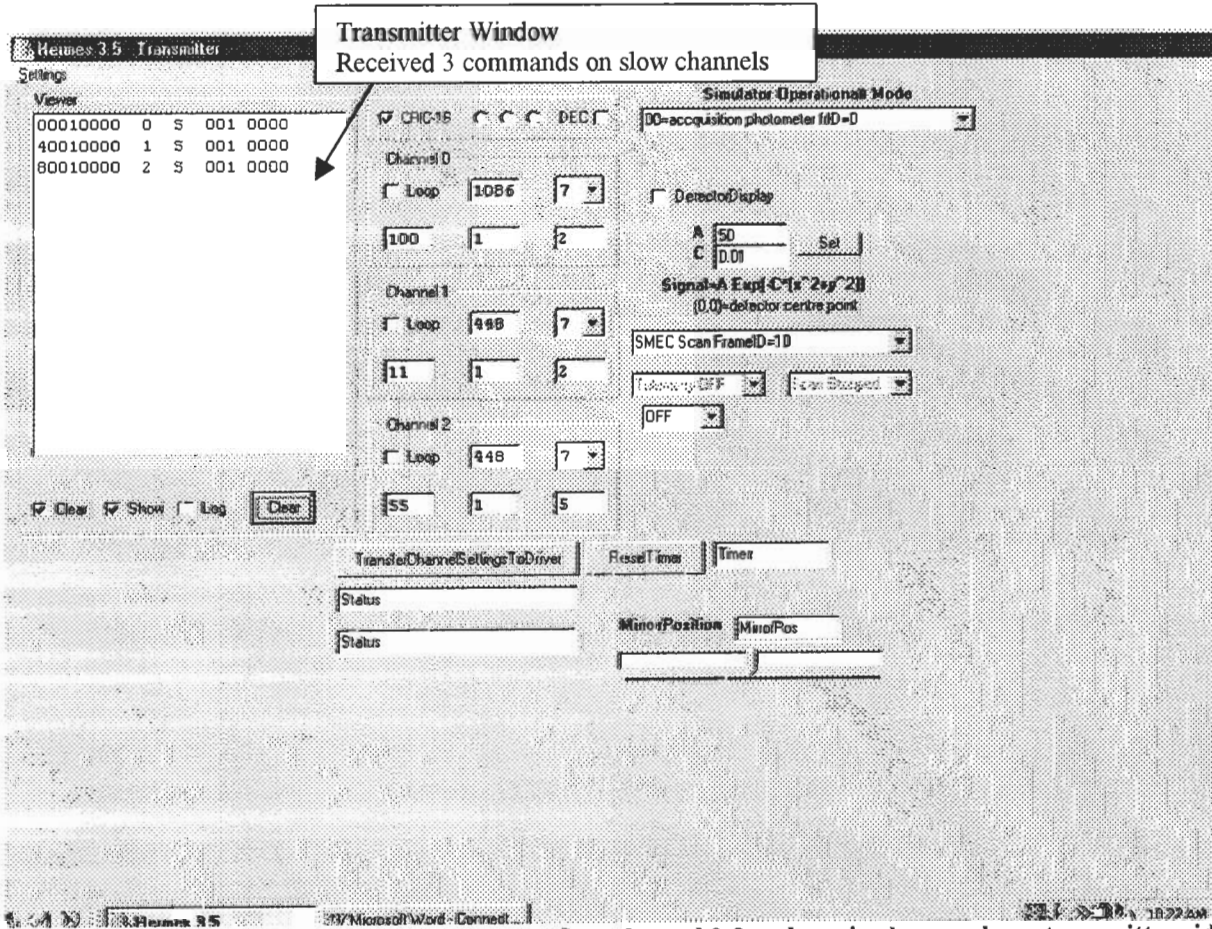
Your computer should now look like this



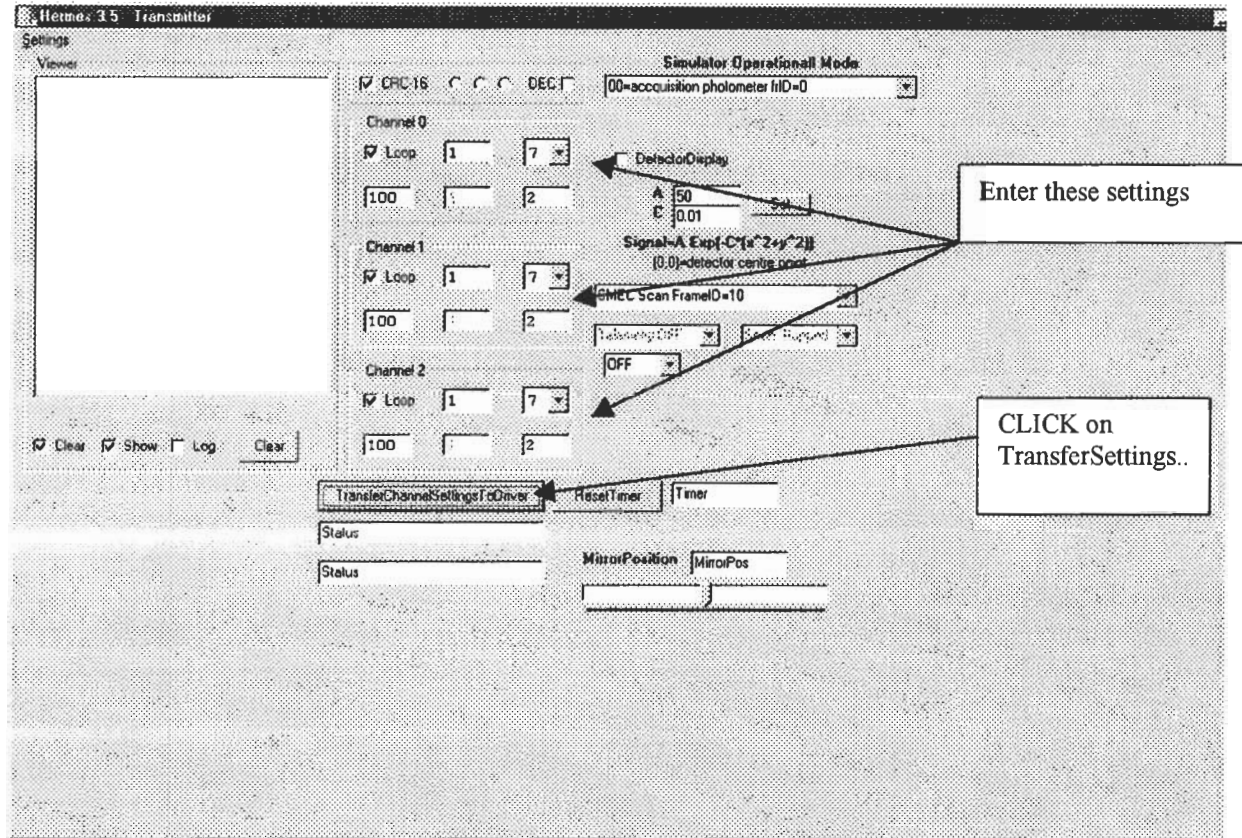
DRCU simulator side



DPU simulator side



Transmitter after number "1" has been send on channel 0-2 and received properly on transmitter side



Repeat the same procedure as before on the receiver side

- Request editor 2 + Send
- Request editor 1 + Send
- Request editor 0 + Send

After a command is send on a slow channel the receiver should start counting blocks received  
 Correct transmission is indicated by a number (green if correct otherwise red)

If you uncheck the Loop boxes on the transmission side the transfer stops

For a more detailed description read then user manual section in **DRU Simulator** document.  
 The command examples refers to simulator version 3.4

?????

H-G Florén

+46-8-5537 8522  
 floren@astro.su.se