



**HERSCHEL**  
**SPIRE**

Ref: **SPIRE-RAL-DOC-001630**

Author: **S. D. Sidher & M. Requena-Torres**

Updated by : **Asier Abreu**

Page: 1

Issue: **2.1**

Date: **15-Dec-2006**

## **SPIRE EGSE-ILT Startup Procedures**

**Prepared by:**

**S. D. Sidher & M. Requena-Torres (RAL)**

Date

**Checked:**

Date

**Approval:**

Date

### **Distribution**

**RAL**

Sunil D. Sidher  
Asier A. Aramburu  
Tim J. Grundy  
Allan Dowell  
Tanya Lim  
Steve Guest  
Eduard Polehamton

**Cardiff**

Tim Waskett

**Imperial College**

Davide Rizzo

George Bendo



Host system	Windows 2000 SP2
Word Processor	Microsoft Word 2000 SR1
File	

### Document Change Record

Date	Index	Affected Pages	Changes
24-June-2003	Issue 0.7		First version
02-March-2006	Issue 1.0		Update for PFM3 configuration
08-Sep-2006	Issue 2.0		Update for PFM4 configuration
15-Dec-06	Issue 2.1		Updated to contain PRIME/REDUNDANT references



## Contents

Contents .....	3
1 Scope of Document .....	4
2 Applicable Documents .....	4
3 Constraints .....	5
3.1 Safety .....	5
4 EGSE-ILT Startup Procedures .....	6
4.1 Starting the EGSE Router and Gateway .....	6
4.2 Starting SCOS 2000 .....	7
4.3 Starting the DRCU Simulator .....	9
4.4 Starting the CDMS Simulator .....	10
4.5 Starting the DPU and the OBS .....	12



## 1 Scope of Document

This document describes the procedures for the safe startup of the SPIRE EGSE and the DPU.

## 2 Applicable Documents

	<b>Title</b>	<b>Author</b>	<b>Reference</b>	<b>Date</b>
AD 1	SPIRE On-Board Software User Manual	Sergio Molinari	<a href="#">SPIRE-IFS-PRJ-001391, Issue 2.1</a>	16/12/2005
AD2	CDMS Simulator User Manual	Andy Matheson & D.J. Parker	<a href="#">SPIRE-RAL-PRJ-00807, Issue 2.2</a>	12/03/2003
AD3	DRCU Simulator User Manual	H-G Florén & Göran Olofsson	<a href="#">Issue 1.0 Draft 1.5 (?)</a>	26/11/2003



### **3 Constraints**

#### **3.1 Safety Issues**

There are no intrinsic risks of personal injury involved in running this procedure. Nevertheless it is advised to follow the general safety recommendations if any of the equipment described below is located within space equipment clean areas.

#### **3.2 ESD Issues**

Some of components of the equipment required for the start up of the EGSE (The SPIRE DPU in particular) are highly ESD sensitive and therefore ALL ESD precautions should be taken before touching this components. If in doubt of the precautions required to manage electronic equipment DO NOT execute section 4.5 of this procedure.



## 4 EGSE-ILT Startup Procedures

### 4.1 Starting the EGSE Router and Gateway

<b>Objective:</b>	To startup the EGSE router and gateway
<b>Initial Conditions:</b>	EGSE router and gateway not running
<b>Final Conditions:</b>	EGSE router and gateway running
<b>Constraints:</b>	HCSS correspondent build needs to be installed on the workstation were these applications are going to be run.
<b>Total Duration:</b>	2 minutes

#### General Note:

For security reasons the passwords for the different accounts used to start the different EGSE applications are NOT provided in this document. These can be found on envelopes (labelled with the different workstation names and user accounts) on top level cabinet of the drawer located on the SPIRE Control Room. Alternatively you can contact Sunil D. Sidher or Asier A. Aramburu for this information

Step.	Action
	<p>Start the EGSE router and gateway:</p> <ul style="list-style-type: none"> <li>• Login as user <b>sg55</b> on Lichfield.</li> <li>• First start the router: <ul style="list-style-type: none"> <li>○ Open a konsole by hitting the console icon</li> <li>○ Select "Rename session" option from the "Session" tab and rename the session to be "EGSE Router"</li> <li>○ Start the router from this konsole by typing router R</li> </ul> </li> <li>• Now start the EGSE gateway <ul style="list-style-type: none"> <li>○ Open another konsole by hitting the console icon</li> <li>○ Select "Rename session" option from the "Session" tab and rename the session to be "EGSE Gateway"</li> <li>○ Start the EGSE gateway from this konsole by typing router S --scosapids 1280-1283,2036-2038 (<b>Note:</b> -- is minus,minus)</li> </ul> </li> </ul>



## 4.2 Starting SCOS 2000

<b>Objective:</b>	To startup SCOS 2000
<b>Initial Conditions:</b>	EGSE router and gateway running
<b>Final Conditions:</b>	EGSE router, gateway and SCOS 2000 running
<b>Constraints:</b>	
<b>Total Duration:</b>	2 minutes

Step.	Action
-------	--------



#### Start SCOS 2000

- Login as user **sops23e** in Lincoln.
- Open a terminal window by clicking on the screen icon of the desktop environment
- Start SCOS 2000 typing **s2.start** from the command line. The SCOS 2000 MAIN Task Launcher GUI should appear. See Figure 1 on the next page.
- From the SCOS 2000 task launcher click on the **EGSEsrv** button. The mandatory EGSE server processes will become highlighted.
- Start the highlighted processes by clicking on the **Start** button at the bottom left corner of the SCOS 2000 task launcher. Confirmation will be requested. The processes will take about a minute to start. When a horizontal task bar (See Figure 2) appears at the top of the screen several alarms will begin to sound – this is perfectly normal and not a cause for concern.
- Click on the **Alarm Tone Enabled** button on the horizontal task bar that appears at the top of the screen (See arrow on figure 2). Select the option to disable the alarm but only do this if you are confident that you do not want to monitor the alarms – the alarms will sound when housekeeping parameters go in and out of limits.
- Click on the **Users** button in the horizontal task bar and on the pop up window login as:

**User name:** Matt      **Password:** Matt

Select the **SOFT\_001** role from the **Role** drop down menu.

- Wait until the highlighted processes on the SCOS 2000 task launcher have green borders, indicating that SCOS 2000 server processes have started up correctly.

*A scrolling Regis window appears at the bottom of the screen and displays various messages: **red ones are alarms**, **yellow ones are warnings** and **green ones are for normal messages**. All red alarms regarding the NCTRS connections can be ignored.*

- To monitor telemetry select the **MON2** process from the SCOS 2000 MAIN Task Launcher and click on the **Start** button. A Telemetry Desktop display appears on the second SCOS screen (See Figure 3).
- From the Telemetry Desktop display click on the **AND...** button and select the Alphanumeric Display of interest (e.g. **DPU AND OBS PARAMETERS**)
- To send manual commands, start the Manual Stack process by selecting the **MSTK1** button from the SCOS 2000 task launcher and click on the **Start** button. A Manual Stack display appears on the first SCOS screen (See Figure 4) .

SCOS is now ready to receive OBS TM packets and to display the DPU/OBS parameter values.





### 4.3 Starting the DRCU Simulator

<b>Objective:</b>	To startup the DRCU Simulator
<b>Initial Conditions:</b>	DRCU Simulator not running
<b>Final Conditions:</b>	DRCU Simulator running
<b>Constraints:</b>	
<b>Total Duration:</b>	1 minute

Step.	Action
	<ul style="list-style-type: none"><li>• Select Screen 1 on the Belkin Switch Box for the DPU &amp; DRCU display monitor (facing the window).</li><li>• If the screen is blank check to see if the PC is switched off. You may have to switch on the PC marked <b>DRCU Simulator</b> – a Black Tower on the floor to the left of the DPU &amp; DRCU display monitor.<ul style="list-style-type: none"><li>- Login in as user Administrator (See envelope marked “DRCU Simulator” in the top drawer)</li></ul><p><i>Occasionally a failure message appear on the screen for process R2Drv – it can be ignored for now.</i></p></li><li>• Start the DRCU simulator by double clicking on the <b>transmit3.4</b> shortcut (based on DRCU/DPU ICD version 0.7).</li></ul>



#### 4.4 Starting the CDMS Simulator

---

**Objective:** To startup the CDMS Simulator

**Initial Conditions:** EGSE router and gateway running

**Final Conditions:** EGSE router, gateway and CDMS Simulator running

**Constraints:**

**Total Duration:** 2 minutes

---

Step.	Action
-------	--------



The CDMS simulator is installed on Gordon (Screen 3 on the Belkin Switch Box) but can also be run from Tintin (screen 4). The monitor for these PCs is labelled "CDMS & RT display monitor"

- Login in as user cdms (See envelope marked "CDMS-Sim machine" in the top drawer)
- Double click on the shortcut **CDMS\_SIM**

The CDMS simulator front panel appears.

- Check that the '**Source TC**' button is selected for **Router**.

*TCs from SCOS 2000 will only be accepted and dispatched to the DPU if the **Router** option is selected.*

- Click on the **Launch Router Command Interface** button

A window appears asking for the IP address of the machine where the router is running. Enter the IP address for Truro: 130.246.32.25

- Enter 9877 for the Router Port Number and then click on **Connect**.

This opens TCP/IP connection to the router and also brings up the **Router Command Interface** window.

- Enter Client Name as CDMS\_SIM and click **Send Command**.

At this point you can check that the connection with the EGSE router is established by looking in the EGSE router window – CDMS\_SIM, the name of the CDMS Simulator Client, should appear.

- From **Select command**, select ADD\_CLIENT and enter the hexadecimal APID of SPIRE command packets – the APID is 0x500 but you do not need to enter the "0x". Then click on **Send command**.

- Repeat the previous step for the APID of the CDMS simulator, viz. 7F6.

*This step should therefore be repeated for all systems to be commanded via the CDMS simulator.*

- Click **Close Window** on the **Command Interface** window.

The Client name should appear in the **Client name** text box on the CDMS Simulator front panel and the **router connection alive** indicator button should flicker yellow/green.

You should now see the packet dumps of CDMS HK telemetry appearing on the EGSE router window on Truro.

- Click on the **Select BusList** button and select the bus list SPIRE\_nominal.txt from the drop-down menu
- Click on the **Start/Stop BC** button to start the Bus Controller.



#### 4.5 Starting the DPU and the OBS

---

<b>Objective:</b>	To startup the DPU and run the OBS
<b>Initial Conditions:</b>	EGSE router & gateway, DRCU Simulator, CDMS Simulator and SCOS 2000 all running. DPU off and the OBS not running.
<b>Final Conditions:</b>	EGSE router & gateway, DRCU Simulator, CDMS Simulator and SCOS 2000 all running. DPU on and the OBS running
<b>Constraints:</b>	If the OBS image has to be loaded via the JTAG probe then the startup procedure could take longer
<b>Total Duration:</b>	2 minutes to 5 minutes

---

Step.	Action
1	<p>Power ON DPU:</p> <ul style="list-style-type: none"><li>• Switch on DPU master switch on the power supply – the power supply is labelled <b>SPIRE Power Supply</b></li><li>• Wait for the voltage to stabilise to 28.00V. The current being drawn should be ~2.2A.</li><li>• Press the <b>ON/OFF</b> toggle button on the power supply. The current being drawn should be ~0.42A.</li><li>• When the DPU is powered ON the Boot Software performs some internal checks and generates an event packet (5,1) in the case of boot software v2.0 (DPU model FM and CFM) or a (5,2) in the case of boot software v1.0</li><li>• <b>Note that at this point it may be necessary to stop and start the Bus Controller from the CDMS Simulator Front Panel to start receiving SPIRE HK TM packets.</b></li></ul>



2

- **Case 1: Starting OBS via JTAG probe**

- DPU software is installed on isopc1 (Screen 4 on the Belkin Switch Box for the DPU & DRCU display monitor). If a new OBS image has to be loaded via the JTAG probe the following steps have to be executed

- Check to see whether Screen 4 is already connected. If it is not then ensure that the isopc1 PC is powered on – isopc1 located on the floor to the left of the DPU & DRCU display monitor
- Ensure that the JTAG probe is plugged into the CPU board of the DPU and in the back of the isopc1 PC
- Login in with your federal ID on the SSD domain.
- Start ADSP-21020 emulator:

- Double click on the ADSP-21020 Emulator shortcut

Alternatively select Start/Programs/ADSP-21000 Tools and then select ADSP-21020 Emulator

- Load OBS Image

- Click on file and select **Load file**

Select folder q:/obs/obs\_so~1

First select spire.ach file

Click on **<OK>**

- Click on file and select **Load file**

Select folder q:/obs/obs\_so~1

Select spire.exe file

Click on **<OK>**

In the bottom of the display the message “**Target Loading please wait**” should appear.

After the OBS has finished loading the message “**Target Halted**” should appear. The OBS loading takes about 10 seconds.

- If a new OBS image was loaded in the previous step, then press **F4** on isopc1 keyboard to start OBS. In the bottom of the display the message “**Target Running**” should appear.

The OBS is now running.

- Check to see that an event TM packet (5,2) is received on the CDMS Simulator TM Log window.
- You should now see SPIRE HK TM packets being received on the EGSE gateway display, the CDMS Simulator TM log window and also on the SCOS 2000 display for DPU/OBS Parameters.



3

- **Case 2: EEPROM-resident OBS is being used**
- On SCOS execute DPU\_START procedure from HCSS Test Procedures
  - **ALTERNATIVELY (if DPU\_START is not available):**
    - Send the "Force Boot" command from SCOS 2000 using the Manual Stack:
    - Click on the **Cmd...** button of Manual Stack GUI and select the **Force Boot** command from the scrolling list of commands. Click on the **OK** button.  
A GUI for the **Force Boot** command appears.
    - Take the default values for all parameters and click on the **OK** button.  
The command will appear in the Manual Stack as entry number 1.
    - Click on the **Arm** button followed by the **Go** button to execute the command
- You should now see SPIRE HK TM packets being received on the EGSE gateway display, the CDMS Simulator TM log window and also on the SCOS 2000 display for DPU/OBS Parameters.

## 5 Figures

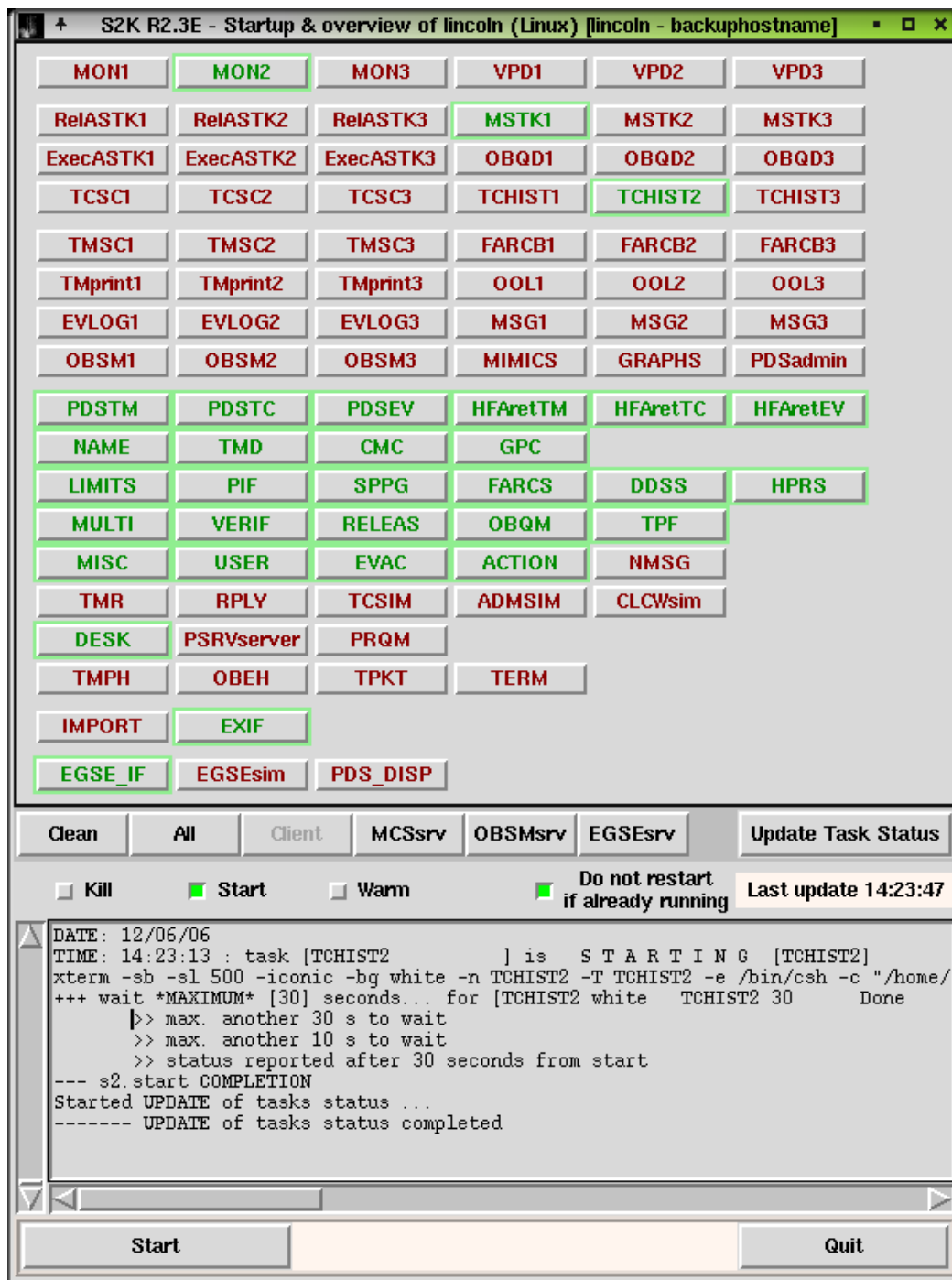


Figure 1. SCOS MAIN Task Launcher



Figure 2. Login Task bar

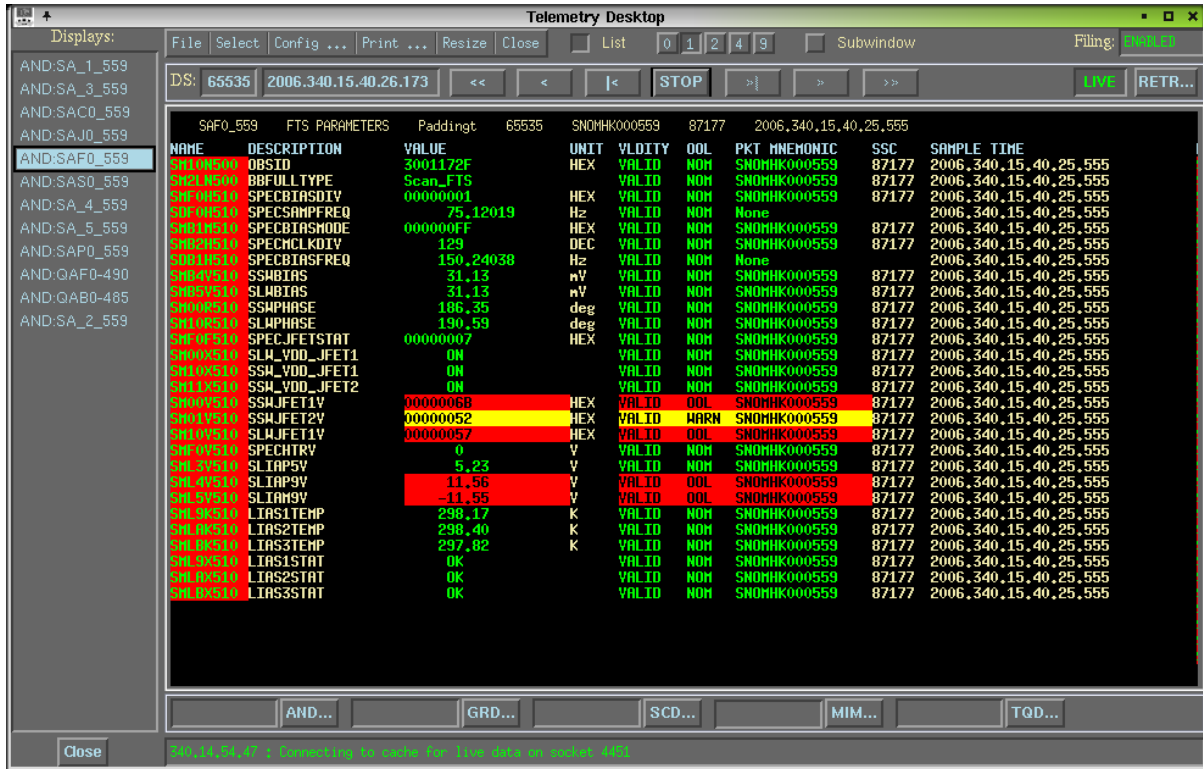


Figure 3. Telemetry Desktop



Figure 4. Manual Stack Window