

	<p>SPIRE BDA-JFET Harness Definition</p>	<p>Doc #: SPIRE-RAL-DOC-001369 Issue: 1.0 Date: 17 September 2002 Page 1 of 19</p>
---	---	--

SPIRE BDA-JFET Harness Definition

PREPARED BY: *Douglas Griffin* Date: ...17 Sept. 2002...
 APPROVED BY: L. Husted Date:
 Chris Brockley-Blatt *Chris Brockley-Blatt* Date: 24 Sept. 2002



SPIRE BDA-JFET Harness Definition

Doc #: SPIRE-RAL-DOC-001369
Issue: 1.0
Date: 17 September 2002
Page 1 of 19

SPIRE BDA-JFET Harness Definition

PREPARED BY: Douglas Griffin..... Date: ...17 Sept. 2002...

APPROVED BY: L. Husted..... Date:

Chris Brockley-Blatt..... Date:.....



SPIRE BDA-JFET Harness Definition

Doc #: SPIRE-RAL-DOC-001369
Issue: 1.0
Date: 17 September 2002
Page 2 of 19

CHANGE RECORD

ISSUE	DATE	SECTION	CHANGE(S) MADE
Issue 0.1	02/07/02		Comments
Issue 0.2	29/07/02		Added comments from Len Husted and John Delderfield and incorporated more information.
Issue 1.0	17/09/02		Added information discussed during meeting at Tekdata 14/8/02

CONTENTS

Change Record	2
Nomenclature	3
Applicable Documents	3
Reference Documents	3
1. Sope	4
2. Description	4
3. General Specifications	4
3.1 Models.....	4
3.2 Harness routing.....	4
3.3 Connectors.....	5
3.3.1 51-Way MDM Connectors.....	5
3.3.2 51-Way Nanonics Connectors.....	5
3.3.3 MDM 21 Connector.....	6
3.3.4 Strip connectors (MTB).....	6
3.4 Wire Specifications.....	6
3.4.1 12-ax.....	6
3.4.2 Screened Twisted Triple.....	7
3.5 Pin Allocation Table.....	7
3.6 Shielding.....	9
3.7 Acceptance Testing.....	9
3.8 FPU Feedthrus.....	9
3.9 Labelling.....	9
3.10 Bake-out.....	9
3.11 Transportation.....	9
4. PSW BDA Assembly – F1 to F6	10
5. PLW BDA Assembly – F7 to F8	11
6. PMW BDA Assembly – F9 to F12	11
7. SSW BDA Assembly – F13 to F14	12
8. SLW BDA Harness Assembly – F15	13
9. PTC Readout Harness Assembly – F28	14
10. Appendix One – Photometer Harness routing	15
11. Appendix Two – Spectrometer Harness Routing	16
12. Appendix Three- Photometer FPU Feedthru Panel	17
13. Appendix Four – Spectrometer FPU Feedthru Panel	18
14. Appendix 5 – External routing of Harnesses	19



SPIRE BDA-JFET Harness Definition

Doc #: SPIRE-RAL-DOC-001369
Issue: 1.0
Date: 17 September 2002
Page 3 of 19

NOMENCLATURE

ADP	Acceptance Data Package
BDA	Bolometer Detector Array
FPU	Focal Plane Unit
JFP	Photometer JFET assembly
JFS	Spectrometer JFET Assembly
PLF	Long-Wave Photometer Feedthrough
PLW	Long—wave Photometer
PMF	Medium-Wave Photometer Feedthrough
PMW	Medium-Wave Photometer
PSF	Short-Wave Photometer Feedthrough
PSW	Short-wave Photometer
SLF	Long-Wave Spectrometer Feedthrough
SLW	Long-Wave Spectrometer
SSF	Short-Wave Spectrometer Feedthrough
SSW	Short-wave Spectrometer
PFM	Proto-Flight Model
FS	Flight Spare
STM	Structural Thermal Model
CQM	Cryogenic Qualification Model
MSSL	Mullard Space Science Laboratory
RAL	Rutherford Appleton Laboratory
PTC	Photometer Thermal Control
PTF	Photometer Thermal Control Feedthrough

APPLICABLE DOCUMENTS

AD 1 SPIRE Harness Definition SPIRE-RAL-PRJ-000608, Issue 1.0, 8 July 2002.

REFERENCE DOCUMENTS

RD 1 SPIRE Instrument Block Diagram, Issue 4.6, 9 July 2002.

RD 2 ECSS-Q-70-08A, The manual soldering of high-reliability electrical connections, 6 August 1999.



SPIRE BDA-JFET Harness Definition

Doc #: SPIRE-RAL-DOC-001369
Issue: 1.0
Date: 17 September 2002
Page 4 of 19

1. SCOPE

This document outlines the specifications for the procurement of the following items for the Herschel/SPIRE instrument.

- STM/CQM/FS PSW BDA to JFET Harness Assembly
- STM/CQM/FS PMW BDA to JFET Harness Assembly
- STM/CQM/FS PLW BDA to JFET Harness Assembly
- STM/CQM/FS SSW BDA to JFET Harness Assembly
- STM/CQM/FS SLW BDA to JFET Harness Assembly
- STM/CQM/FS PTC to JFET Harness Assembly
- PFM PSW BDA to JFET Harness Assembly
- PFM PMW BDA to JFET Harness Assembly
- PFM PLW BDA to JFET Harness Assembly
- PFM SSW BDA to JFET Harness Assembly
- PFM SLW BDA to JFET Harness Assembly
- PFM PTC to JFET Harness Assembly

2. DESCRIPTION

These harnesses are used to connect the Herschel/SPIRE Photometer BDAs (PSW, PMW and PLW) and Spectrometer BDAs (SSW and SLW) to the JFET units (JFS/JFP). They are used to:

- Provide the AC bias current to the arrays, and
- Read out each detector element.

The harnesses for each BDA are grouped together and pass through the wall of the FPU using flange mounted RF tight feedthroughs.

3. GENERAL SPECIFICATIONS

3.1 MODELS

There are to be two complete sets of BDA-JFET harnesses procured. The first set will be used during the STM and CQM qualification programmes and which then becomes the flight spare (FS). The second set of harnesses is to be used for the proto-flight model.

3.2 HARNESS ROUTING

The routing of the harness within the FPU is defined in the MSSSL drawings:

MSSSL A1 5264 306A - 02/05/02 (See §10 - Appendix One – Photometer Harness routing)

MSSSL A1 5264 307A - 02/05/02 (See §11 - Appendix Two – Spectrometer Harness Routing)

A wiring horse representing the detector boxes, the Photometer and Spectrometer Covers and the JFET interfaces is to be used to achieve this.

§14 - Appendix 5 – External routing of Harnesses indicates the routing of the harness outside of the FPU.



SPIRE BDA-JFET Harness Definition

Doc #: SPIRE-RAL-DOC-001369
Issue: 1.0
Date: 17 September 2002
Page 5 of 19

3.3 CONNECTORS

Wire terminations in all connectors will be made according to RD 2 unless normal good practice for the fabrication of cryogenic harnesses dictates otherwise. Any non-compliance to RD 2 is to be documented in the ADP.

A KIP (Key Inspection Point) occurs after solder termination and prior to connector potting. The inspection is to be conducted by an officer nominated by the RAL PA department.

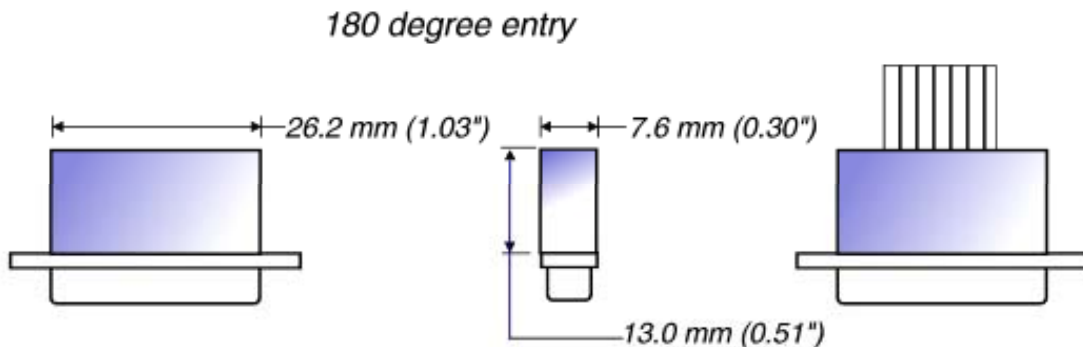
3.3.1 51-Way MDM Connectors

These connectors mate with the JFET units.

The rear of the connectors are to be potted with Stycast 2850 FT, using Stycast Catalyst 9. The potting is to electrically bond the harness shield to the metal chassis of the connector and provide 360° termination of the shield around the signal conductors.

The Dimensions of the potting is to be as follows.

The Part number for the connectors is: M83513/02-51N



NTS : All dimensions nominal

Figure 1 - Nominal dimensions of MDM connectors potted backshells to the SPIRE JFET units.

3.3.2 51-Way Nanonics Connectors

These connectors mate with the SPIRE BDAs.

The rear of the connectors are to be potted with Stycast 2850 FT, using Stycast Catalyst 9.

The Dimensions of the potting is to be as follows.

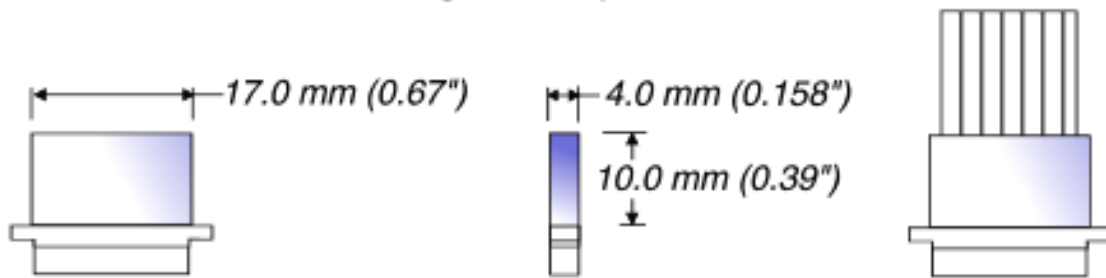
The Part number for the connectors is: STM05111500PCN



SPIRE BDA-JFET Harness Definition

Doc #: SPIRE-RAL-DOC-001369
Issue: 1.0
Date: 17 September 2002
Page 6 of 19

180 degree entry



90 degree entry

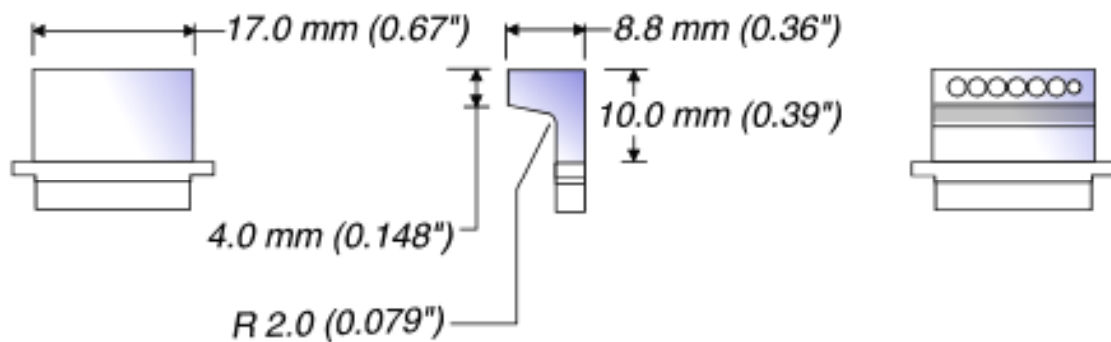


Figure 2 - Nominal dimensions of the Nanonics connector potted backshells to the SPIRE BDAs.

3.3.3 MDM 21 Connector

This connector mates with a flying lead from the PTC hardware.

The rear of the connectors are to be potted with Stycast 2850 FT, using Stycast Catalyst 9.

The Dimensions of the potting is to be as follows.

The Part number for the connectors is: M83513/01-21N

3.3.4 Strip connectors (MTB)

These connectors mate with PTC Heater connectors Harness F20 and F21.

3.4 WIRE SPECIFICATIONS

3.4.1 12-ax

Cooner: P/N CW6515

12 Conductor Cable:



SPIRE BDA-JFET Harness Definition

Doc #: SPIRE-RAL-DOC-001369
Issue: 1.0
Date: 17 September 2002
Page 7 of 19

4 twisted triads, each: 3(40 AWG solid soft bare manganin, .003" PFA insulation to 0.009" ± 0.001" o.d. - colour coded as follows: clear, 10 solids, repeat 1 solid)

The four triads cabled to 0.019" ± 0.001" o.d. Cable the 4 twisted triads, 44 AWG type 304 hard stainless steel braided shield, to 0.056" ± 0.003" o.d. Add outer PFA jacket to 0.068" ± 0.003" o.d.

3.4.2 Screened Twisted Triple

Three twisted 40 AWG solid soft bare manganin wire. 0.003" PFA insulation to 0.009" ± 0.001". Each conductor uniquely colour coded. Cabled to .019" ± 0.001" o.d.

44 AWG type 304 hard stainless steel braided shield with > 80% optical coverage.

3.5 PIN ALLOCATION TABLE

The pin allocation for Harnesses F1-F15 is contained in Table 1. The pin allocation for F28 is to be found in §9 - PTC Readout Harness Assembly – F28.

Table 1 - Pin Allocation table. This information is for information only – see The SPIRE Harness Definition SPIRE-RAL-PRJ-000608

Function	MDM51 contact	Cable	Nanonics contact
Channel A +	35	12-ax (A)	1
Channel A -	51		26
Channel Agnd	To 12-ax shield one end		To 12-ax shield one end
Channel B +	17		2
Channel B -	18		27
Channel Bgnd	To 12-ax shield one end		To 12-ax shield one end
Channel C +	15		3
Channel C -	16		28
Channel Cgnd	To 12-ax shield one end		To 12-ax shield one end
Channel D +	34		4
Channel D -	50		29
Channel Dgnd	To 12-ax shield one end		To 12-ax shield one end
Channel E +	33	12-ax (B)	5
Channel E -	49		30
Channel Egnd	To 12-ax shield one end		To 12-ax shield one end
Channel F +	13		6
Channel F -	14		31
Channel Fgnd	To 12-ax shield one end		To 12-ax shield one end
Channel G +	32		7
Channel G -	48		32
Channel Ggnd	To 12-ax shield one end		To 12-ax shield one end
Channel H +	31		8
Channel H-	47		33
Channel Hgnd	To 12-ax shield one end		To 12-ax shield one end
Channel I +	30	12-ax (C)	9
Channel I-	46		34
Channel Ignd	To 12-ax shield one end		To 12-ax shield one end
Channel J +	29		10
Channel J-	45		35



SPIRE BDA-JFET Harness Definition

Doc #: SPIRE-RAL-DOC-001369
Issue: 1.0
Date: 17 September 2002
Page 8 of 19

Function	MDM51 contact	Cable	Nanonics contact
Channel Jgnd	To 12-ax shield one end		To 12-ax shield one end
Channel K +	28		11
Channel K -	44		36
Channel Kgnd	To 12-ax shield one end		To 12-ax shield one end
Channel L +	11		12
Channel L -	12		37
Channel Lgnd	To 12-ax shield one end		To 12-ax shield one end
Channel M +	27		13
Channel M-	43		38
Channel Mgnd	To 12-ax shield one end		To 12-ax shield one end
Channel N +	26		14
Channel N -	42		39
Channel Ngnd	To 12-ax shield one end	To 12-ax shield one end	
Channel P +	9	15	
Channel P -	10	40	
Channel Pgnd	To 12-ax shield one end	To 12-ax shield one end	
Channel R +	25	16	
Channel R-	41	41	
Channel Rgnd	To 12-ax shield one end	To 12-ax shield one end	
Channel S+	24	17	
Channel S -	40	42	
Channel Sgnd	To 12-ax shield one end	To 12-ax shield one end	
Channel T+	7	18	
Channel T -	8	43	
Channel Tgnd	To 12-ax shield one end	To 12-ax shield one end	
Channel U +	23	19	
Channel U -	39	44	
Channel Ugnd	To 12-ax shield one end	To 12-ax shield one end	
Channel V +	22	20	
Channel V-	38	45	
Channel Vgnd	To 12-ax shield one end	To 12-ax shield one end	
Channel W +	5	21	
Channel W -	6	46	
Channel Wgnd	To 12-ax shield one end	To 12-ax shield one end	
Channel X +	21	22	
Channel X -	37	47	
Channel Xgnd	To 12-ax shield one end	To 12-ax shield one end	
Channel Y +	20	23	
Channel Y -	36	48	
Channel Ygnd	To 12-ax shield one end	To 12-ax shield one end	
Channel Z+	3	24	
Channel Z -	4	49	
Channel Zgnd	To 12-ax shield one end	To 12-ax shield one end	
Bias +	1	STT	25
Bias -	2		50
Bias gnd	19+commoned shlds		51+commoned shlds (Note 1)



SPIRE BDA-JFET Harness Definition

Doc #: SPIRE-RAL-DOC-001369
Issue: 1.0
Date: 17 September 2002
Page 9 of 19

Note 1: The Bias Ground terminates at the Nanonics connector on Pin 51. A separate insulated copper; multi-strand wire is also connected to Pin 51 and potted into the connector assembly. The length of each of these flying leads is to be greater than 300mm and is to be terminated with a solder lug.

3.6 SHIELDING

A >80% coverage Stainless Steel harness overshield is used between the JFP/JFS and the FPU feedthroughs. This overshield is to be bonded 360° around the signal conductors to both the feedthrough and the MDM connector backshell.

3.7 ACCEPTANCE TESTING

Each harness assembly is to be thermally cycled between room temperature and 77K twice. The hold time at 77K is to be at least 30 minutes. The resistance of each individual signal function is to be measured at 77K and 295K and documented.

3.8 FPU FEEDTHRUS

There are to be six feedthroughs mounted on the wall of the FPU. The Feedthroughs are to mount to the Photometer and Spectrometer FPU Connector Panels. The interface drawings of these items are included in Appendix Two.

3.9 LABELLING

Each harness tail is to be clearly marked with Pxx; where "xx" is the two digit numerical identifier of the connector to which the tail connects. The feedthroughs are to be marked with the identifier HSxxx; where xxx identifies the three-letter acronym for the particular feedthrough. The model of the feedthroughs (PFM or QM/FS) is also to be marked.

3.10 BAKE-OUT

The harnesses assemblies are to be baked out prior to delivery at 105°C for 72 hours at less than 10^{-5} torr. The out gassing products between 2-100amu are to be measured and recorded $< 10^{-9}$ torr at 80°C at the end of the bake-out.

3.11 TRANSPORTATION

The harnesses are to be delivered in a sealed dry nitrogen atmosphere. A transportation jig will be used to support the harness and prevent handling damage.



SPIRE BDA-JFET Harness Definition

Doc #: SPIRE-RAL-DOC-001369
Issue: 1.0
Date: 17 September 2002
Page 10 of 19

4. PSW BDA ASSEMBLY – F1 TO F6

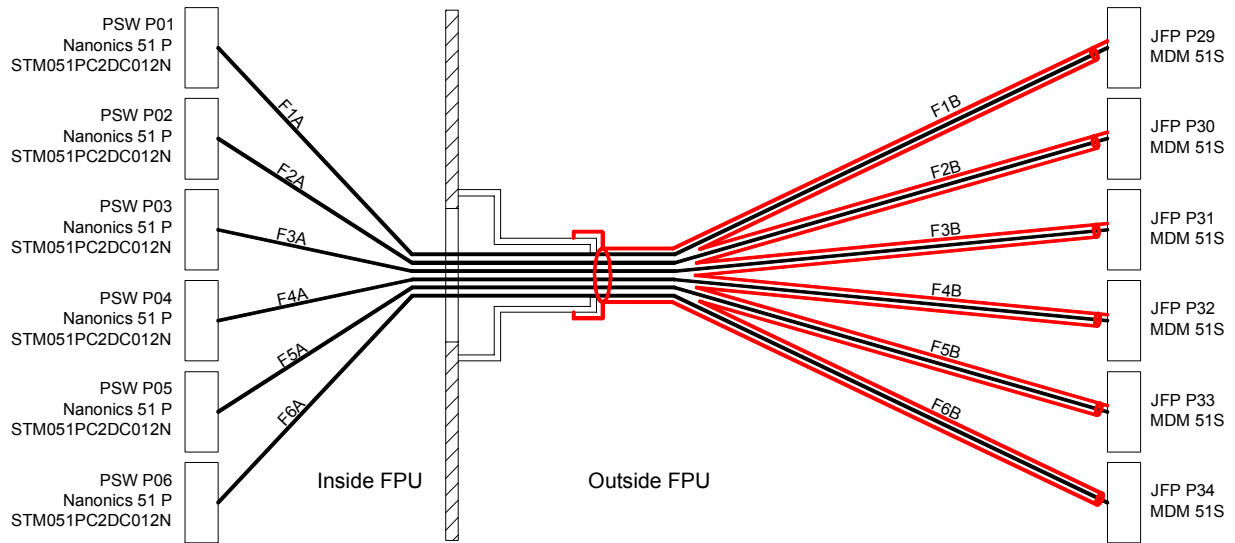


Figure 3 - PSW BDA Assembly – F1 to F6

Harness Element	Length (mm)	Connector entry	Mates with	Harness Composition
F1 A	130	180°	PSW J01	Six 12-Ax, One STT
F1 B	170	180°	JFP J29	
F2 A	130	180°	PSW J02	Six 12-Ax, One STT
F2 B	170	180°	JFP J30	
F3 A	110	180°	PSW J03	Six 12-Ax, One STT
F3 B	170	180°	JFP J31	
F4 A	110	180°	PSW J04	Six 12-Ax, One STT
F4 B	170	180°	JFP J32	
F5 A	96	180°	PSW J05	Six 12-Ax, One STT
F5 B	170	180°	JFP J33	
F6 A	96	180°	PSW J06	Six 12-Ax, One STT
F6 B	170	180°	JFP J34	



SPIRE BDA-JFET Harness Definition

Doc #: SPIRE-RAL-DOC-001369
 Issue: 1.0
 Date: 17 September 2002
 Page 11 of 19

5. PLW BDA ASSEMBLY – F7 TO F8

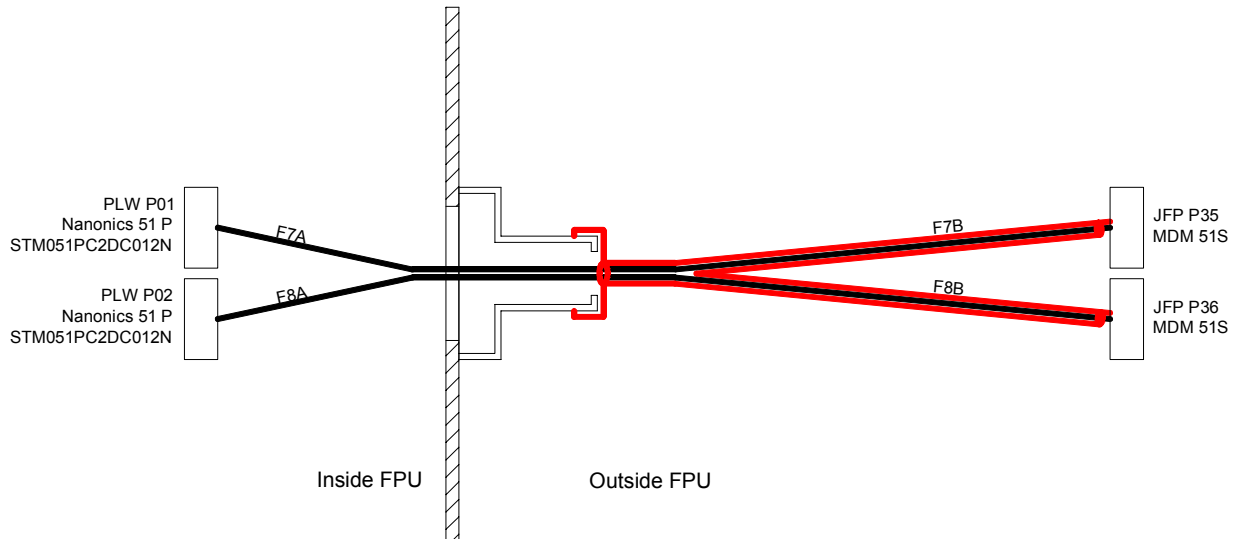


Figure 4 - PLW BDA Assembly – F7 to F8

Harness Element	Length (mm)	Connector entry	Mates with	Harness Composition
F7 A	392	180°	PLW J01	Six 12-Ax, One STT
F7 B	170	180°	JFP J35	
F8 A	491	90°	PLW J02	Six 12-Ax, One STT
F8 B	170	180°	JFP J36	

6. PMW BDA ASSEMBLY – F9 TO F12

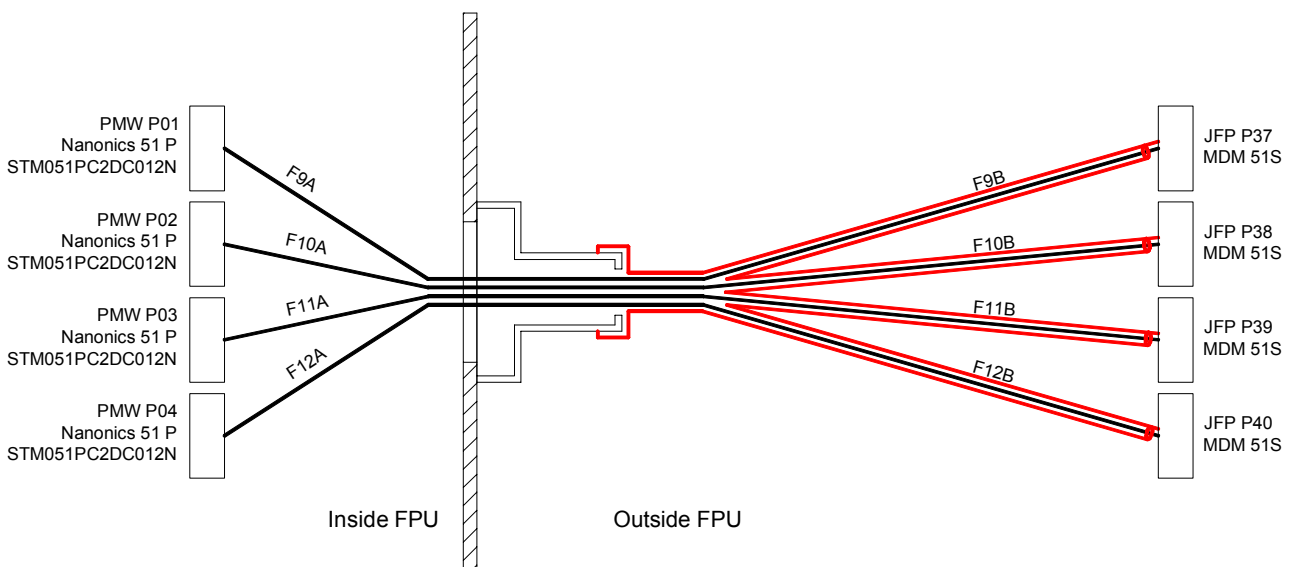


Figure 5 – PMW BDA Assembly – F9 to F12



SPIRE BDA-JFET Harness Definition

Doc #: SPIRE-RAL-DOC-001369
Issue: 1.0
Date: 17 September 2002
Page 12 of 19

Harness Element	Length (mm)	Connector entry	Mates with	Harness Composition
F9 A	111	180°	PMW J01	Six 12-Ax, One STT
F9 B	170	180°	JFP J37	
F10 A	111	180°	PMW J02	Six 12-Ax, One STT
F10 B	170	180°	JFP J38	
F11 A	102	180°	PMW J03	Six 12-Ax, One STT
F11 B	170	180°	JFP J39	
F12 A	102	180°	PMW J04	Six 12-Ax, One STT
F12 B	170	180°	JFP J40	

7. SSW BDA ASSEMBLY – F13 TO F14

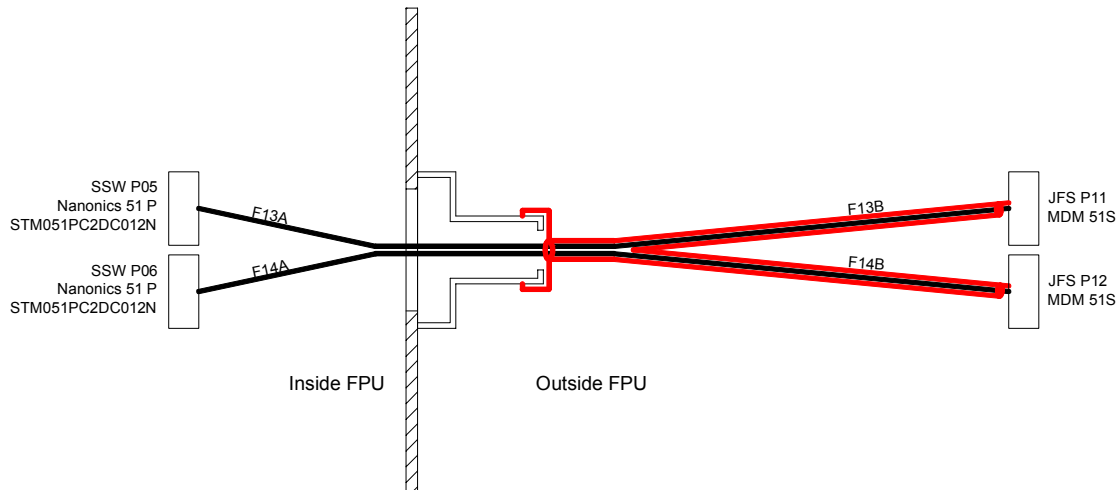


Figure 6 - SSW BDA Assembly – F13 to F14

Harness Element	Length (mm)	Connector entry	Mates with	Harness Composition
F13 A	58	180°	PSW J05	Six 12-Ax, One STT
F13 B	170	180°	JFS J11	
F14 A	167	180°	SSW J06	Six 12-Ax, One STT
F14 B	170	180°	JFS J12	



SPIRE BDA-JFET Harness Definition

Doc #: SPIRE-RAL-DOC-001369
Issue: 1.0
Date: 17 September 2002
Page 13 of 19

8. SLW BDA HARNESS ASSEMBLY – F15

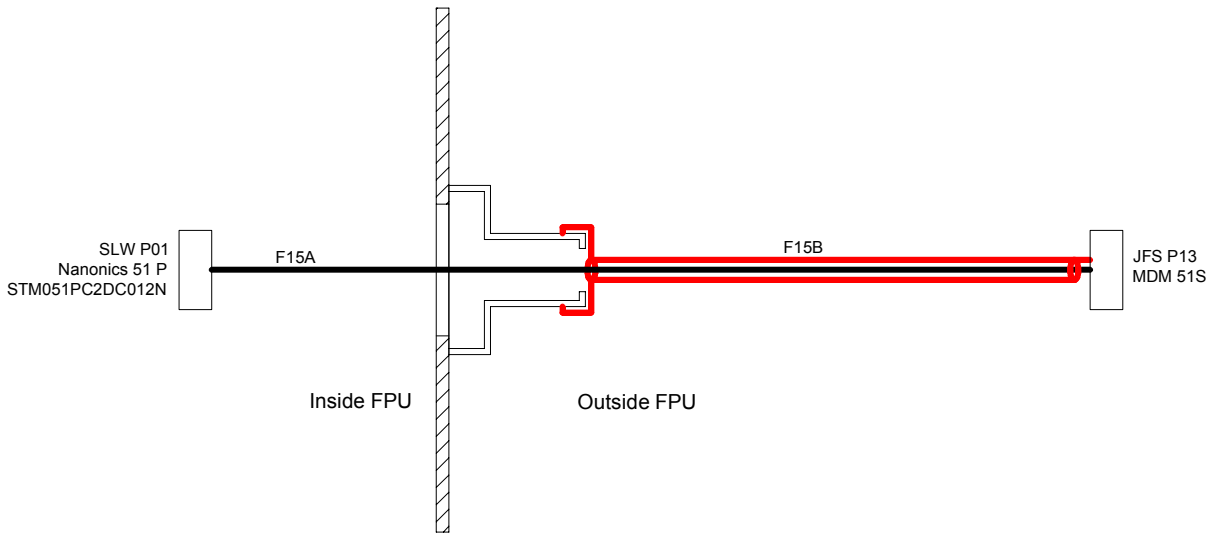


Figure 7 – SLW BDA Harness Assembly – F15

Harness Element	Length (mm)	Connector entry	Mates with	Harness Composition
F15 A	67	180°	SLW J01	Six 12-Ax, One STT
F15 B	170	180°	JFS J13	



SPIRE BDA-JFET Harness Definition

Doc #: SPIRE-RAL-DOC-001369
 Issue: 1.0
 Date: 17 September 2002
 Page 14 of 19

9. PTC READOUT HARNESS ASSEMBLY – F28

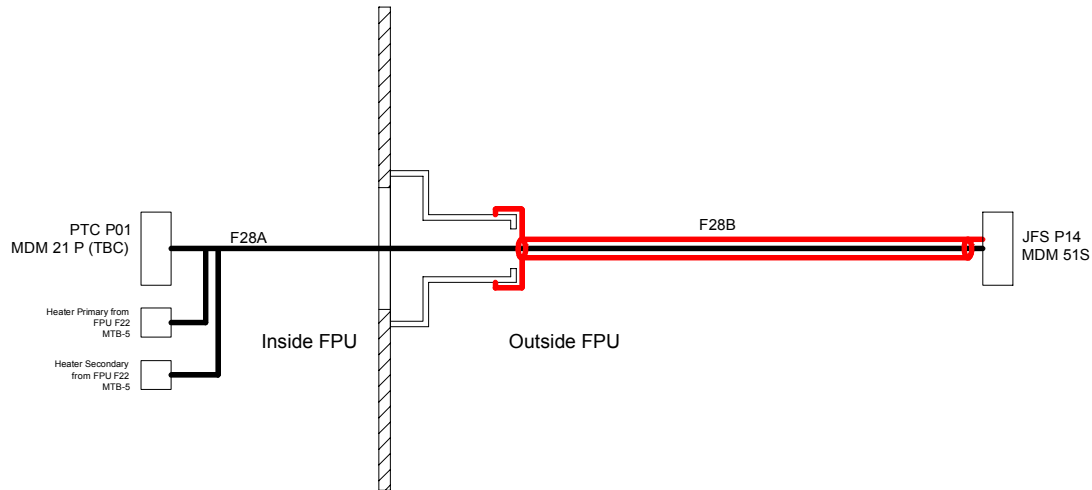


Figure 8 – PTC Readout Harness – F28

Harness Element	Length (mm)	Connector entry	Mates with	Harness Composition
F28 A	67	180°	PTC Hardware and F20/F21	One 12-Ax, One STT
F28 B	170	180°	JFS J13	

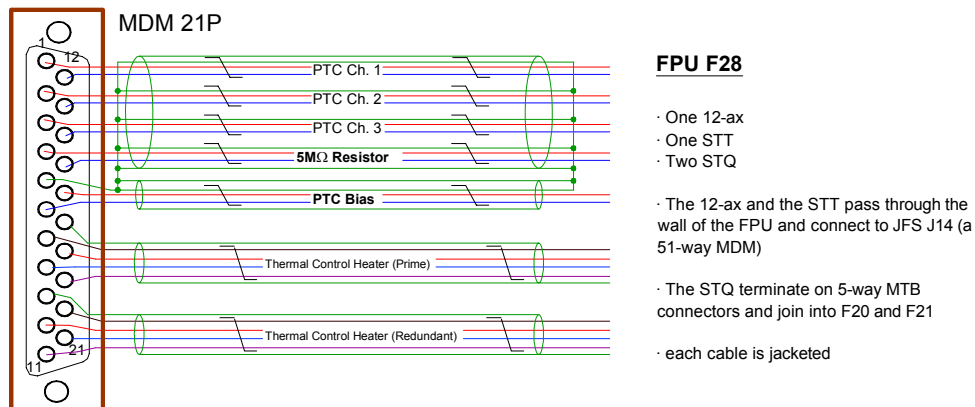


Figure 9 – F28 Pin allocation.



SPIRE BDA-JFET Harness Definition

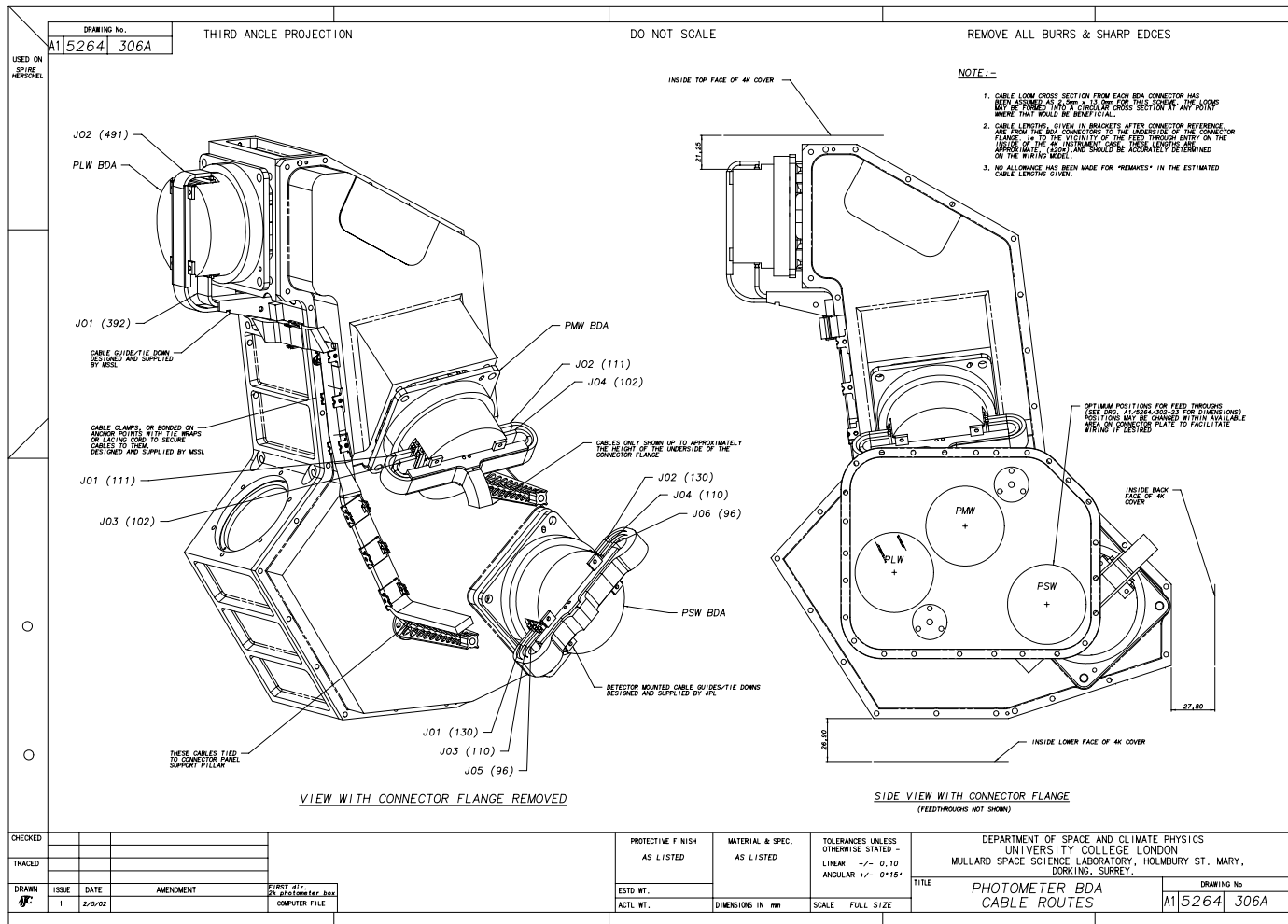
Doc #: SPIRE-RAL-PRJ-001369

Issue: 1.0

Date: 17 September 2002

Page 15 of 19

10. APPENDIX ONE – PHOTOMETER HARNESS ROUTING





SPIRE BDA-JFET Harness Definition

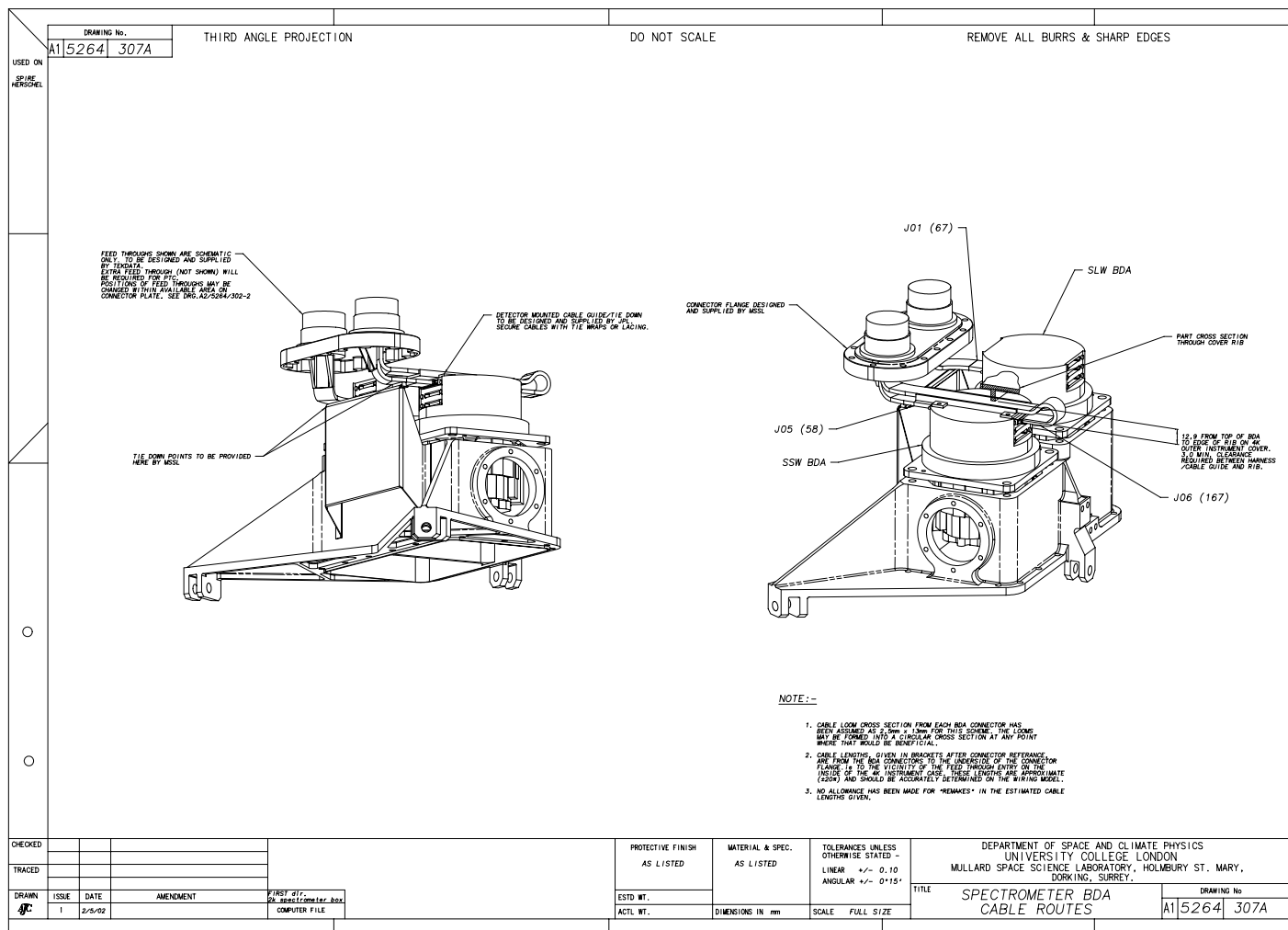
Doc #: SPIRE-RAL-PRJ-001369

Issue: 1.0

Date: 17 September 2002

Page 16 of 19

11. APPENDIX TWO – SPECTROMETER HARNESS ROUTING

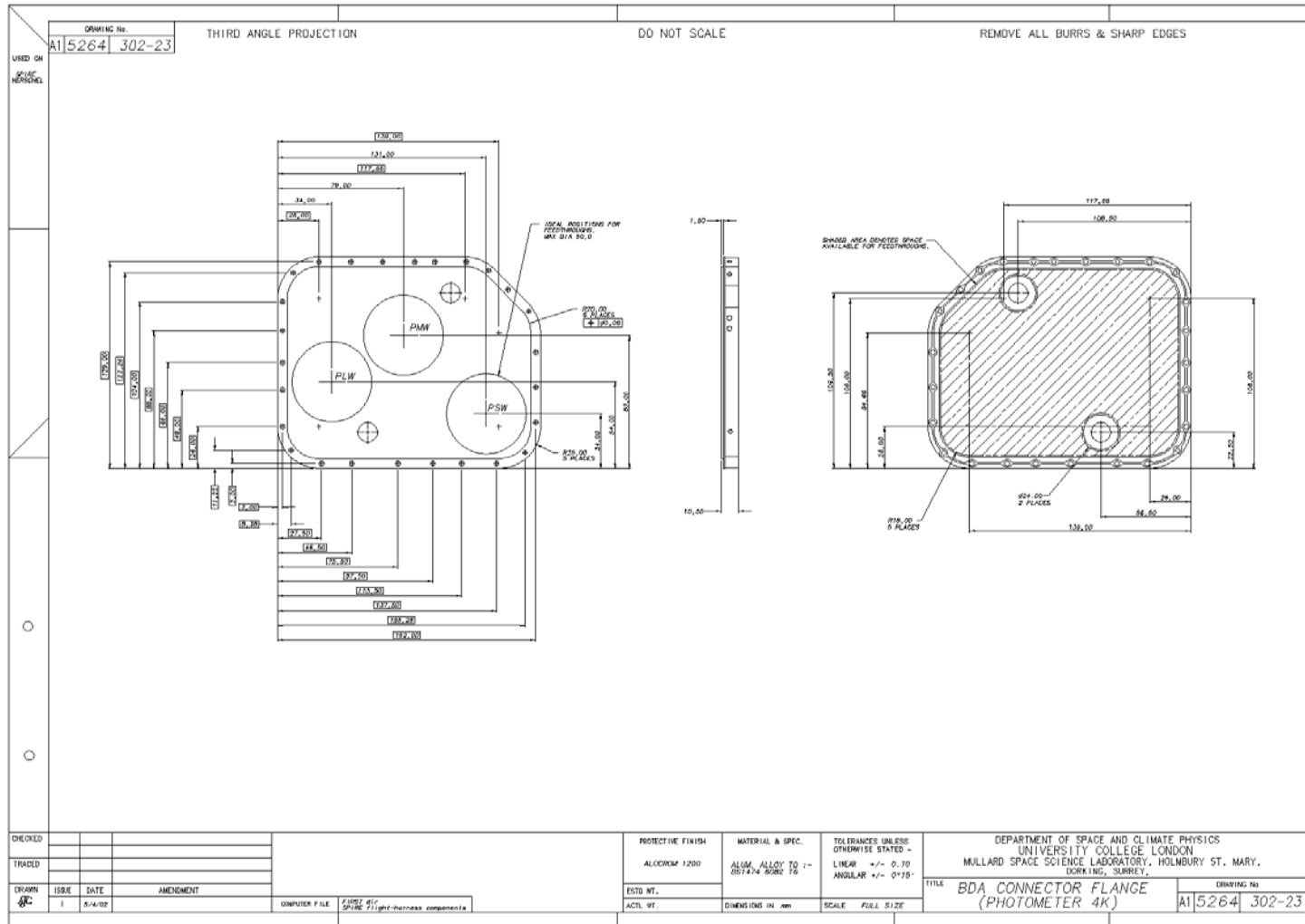




SPIRE BDA-JFET Harness Definition

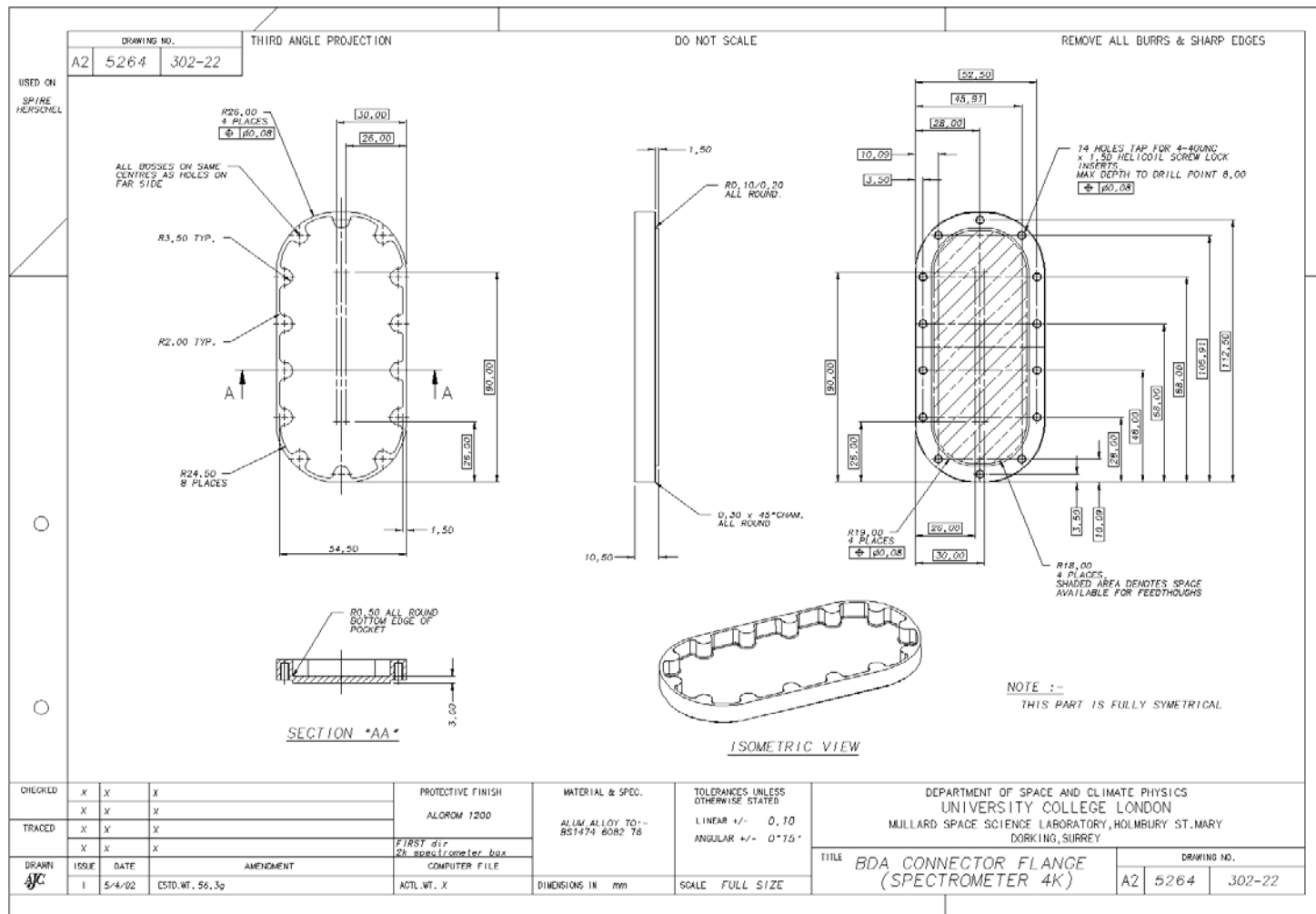
Doc #: SPIRE-RAL-PRJ-001369
 Issue: 1.0
 Date: 17 September 2002
 Page 17 of 19

12. APPENDIX THREE- PHOTOMETER FPU FEEDTHRU PANEL





13. APPENDIX FOUR – SPECTROMETER FPU FEEDTHRU PANEL





SPIRE BDA-JFET Harness Definition

Doc #: SPIRE-RAL-PRJ-001369

Issue: 1.0

Date: 17 September 2002

Page 19 of 19

14. APPENDIX 5 – EXTERNAL ROUTING OF HARNESSES

