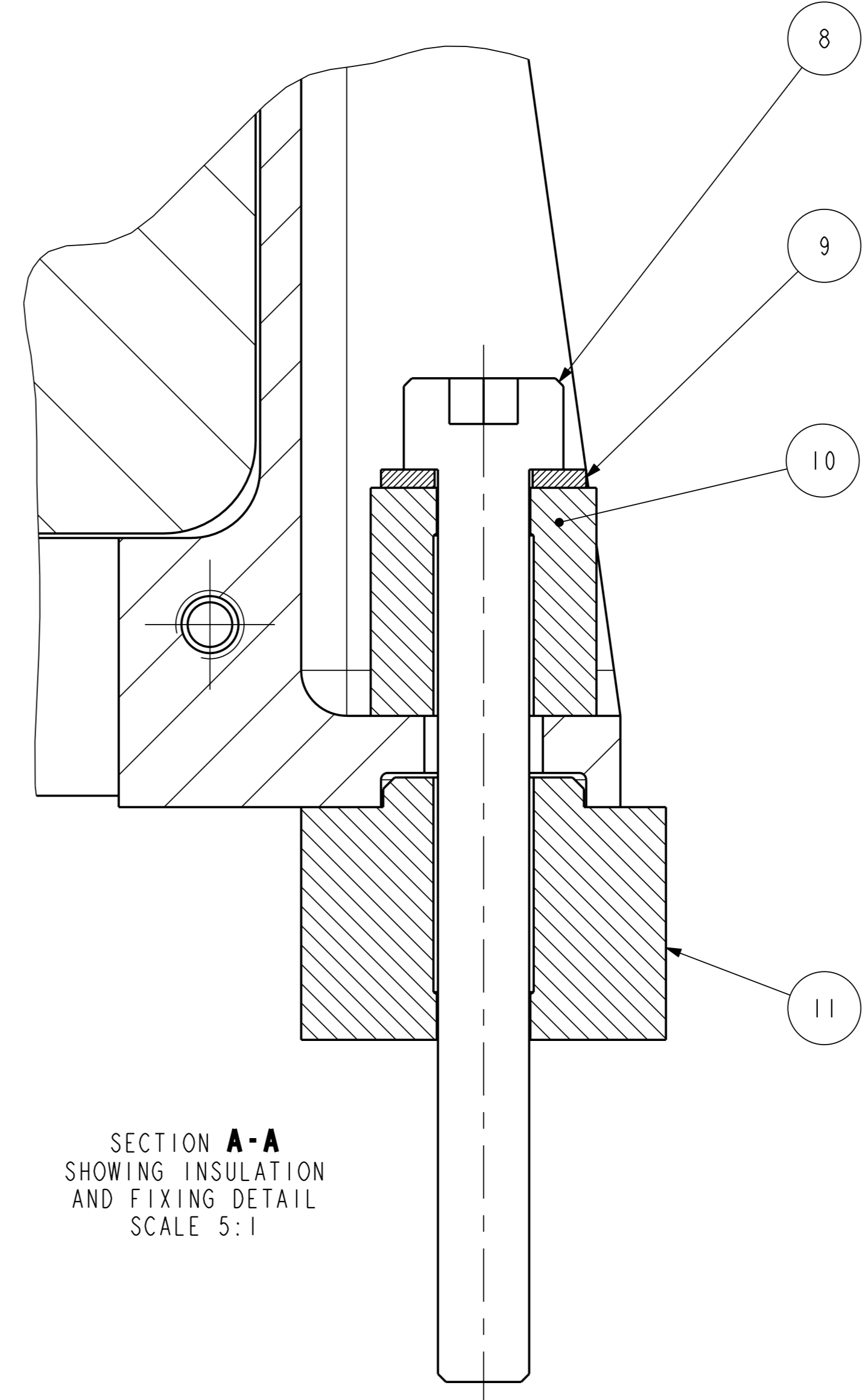
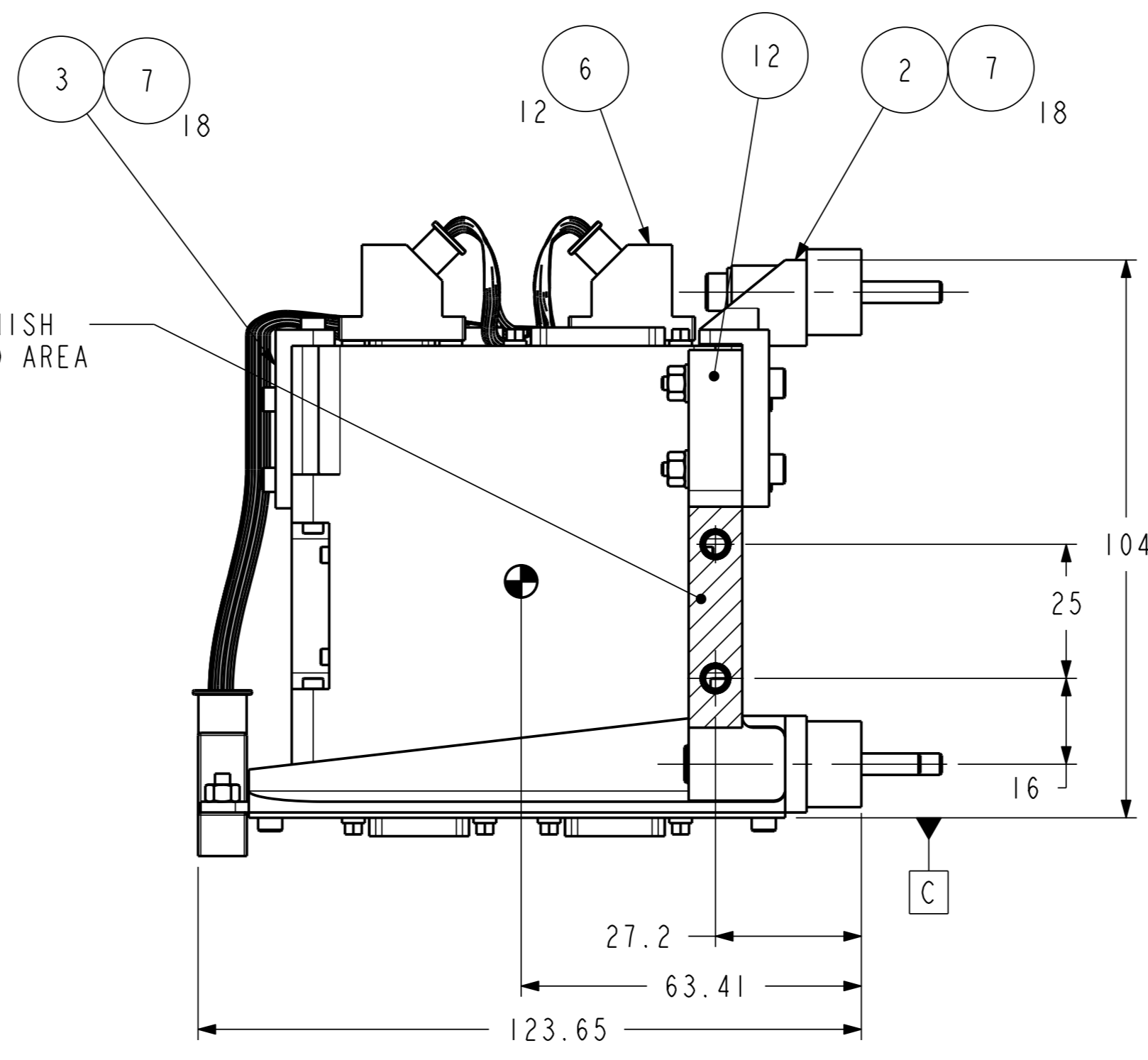


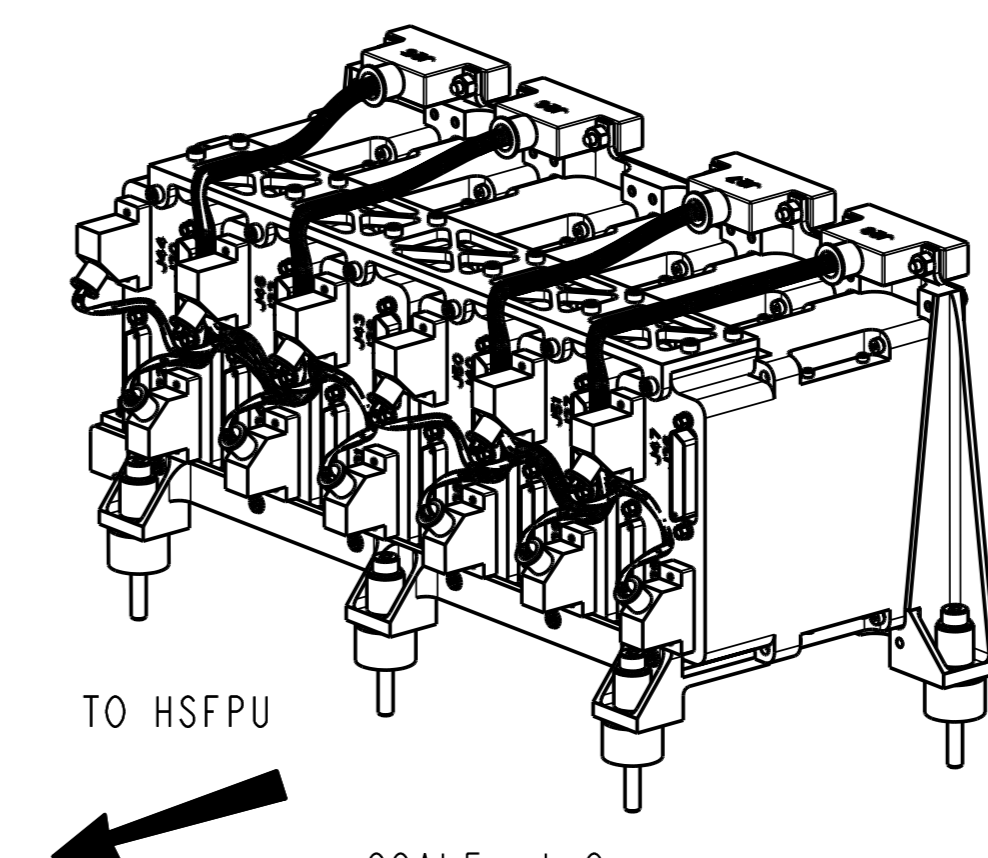
SECTION B-B
SHOWING INSULATION
AND FIXING DETAILS
SCALE 5:1



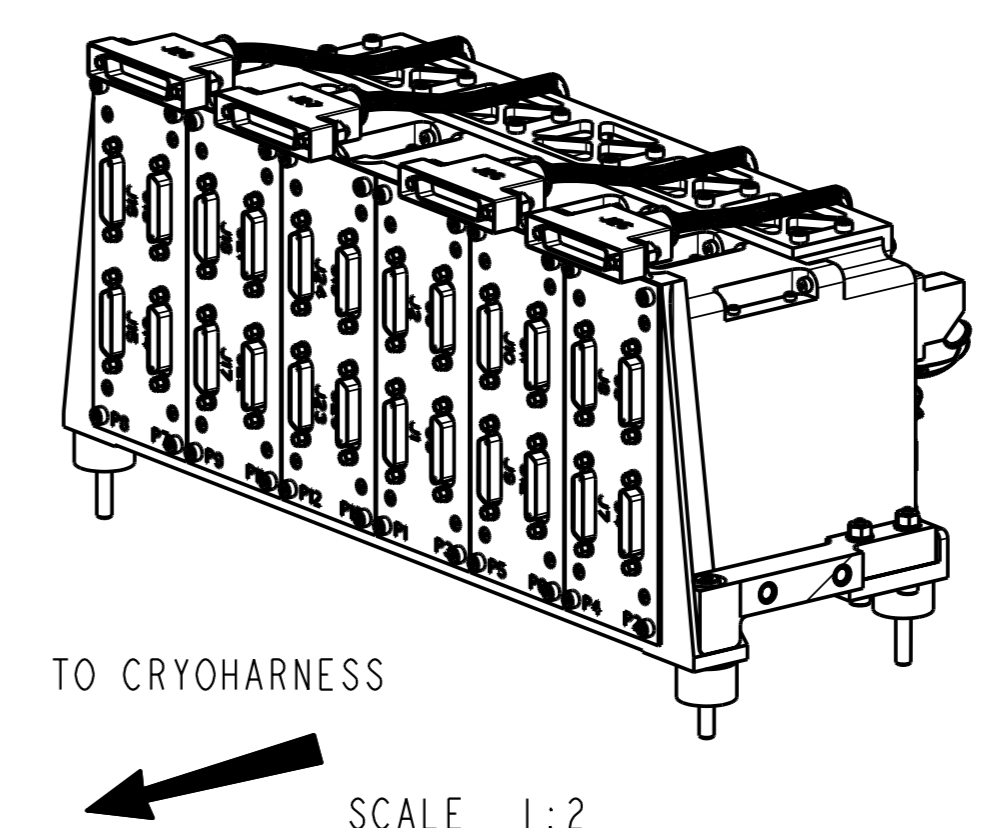
SECTION A-A
SHOWING INSULATION
AND FIXING DETAIL
SCALE 5:1



0.4 SURFACE FINISH
OVER SHADED AREA
0.005



TO HSFPD
SCALE 1:2



TO CRYOHARNESS
SCALE 1:2

NOTE

- ITEMS 10 & 11 TO BE PERMANENTLY BONDED TO MATING FACES.
- TO ATTAIN THE CORRECT MOUNTING INTERFACE DIMENSION, THE FOLLOWING PROCEDURE MUST BE FOLLOWED: PARTS 4 ARE TO BE MOUNTED TO PART 1. MEASURE FROM THE TOP OF PARTS 4 SHOWN AS PLANE 'C' TO THE TAIL END FACE OF PARTS 4, NOTING THE SIX VALUES. MACHINE RAISED PADS ON PART 2 TO REMOVE (VALUE - 87.7).
- ITEM 8 TO BE TORQUED TO 1Nm FOR BEDDING DOWN, LOOSENED AND RETORQUED TO 25cNm. FOR WARM VIBRATION TESTING INCREASE TORQUE TO 2.5Nm FOR DURATION OF TESTS AND LOOSEN AND RETORQUE TO 25cNm BEFORE ANY COOLDOWN.
- UNIT SHOWN FITTED WITH BACK-HARNESS MATING TO J25-28 & J41-52 BECAUSE THIS WILL BE FITTED BEFORE ITEM 15 IS INTEGRATED TO HOB. HOWEVER, THIS HARNESS AND ITS CONNECTORS ARE NOT PART OF THE 6 JFET RACK.

| MOMENTS OF INERTIA (Kg. mm ²) WITH RESPECT TO C OF G | |
|---|----------|
| I _{xx} | 4.07e+03 |
| I _{yy} | 1.43e+04 |
| I _{zz} | 1.46e+04 |

| No. | DESCRIPTION | QTY | MASS (kg) / ITEM | MASS (kg) TOTAL | REMARKS |
|-------------|---------------------|-----|---------------------|--------------------|--|
| 1 | FRONT PLATE | 1 | 128.8 | 128.8 | |
| 2 | LOWER REAR PLATE | 1 | 69.0 | 69.0 | |
| 3 | UPPER REAR PLATE | 1 | 32.6 | 32.6 | |
| 4 | JFET MODULE | 6 | 305 | 1830 | |
| 5 | 37 WAY MICRO-D ASSY | 4 | 17.0 | 68.0 | CONNECTOR AND BACKSHELL |
| 6 | 15 WAY MICRO-D ASSY | 12 | 8.3 | 99.6 | CONNECTOR AND BACKSHELL |
| 7 | SCREW M2.5 x 8 LONG | 60 | 0.6 | 37.2 | A2-80 STAINLESS STEEL BS-EN-150-3506-1:1998 |
| 8 | SCREW M4 x 40 LONG | 5 | 5.0 | 25.0 | A2-80 STAINLESS STEEL BS-EN-150-3506-1:1998 |
| 9 | WASHER M4 | 5 | 0.31 | 1.5 | A2-80 STAINLESS STEEL BS-EN-150-3506-1:1998 |
| 10 | TOP INSULATOR | 5 | 0.9 | 4.5 | |
| 11 | BOTTOM INSULATOR | 5 | 2.8 | 14.0 | |
| 12 | THERMAL STRAP ASSY | 1 | 28.0 | 28.0 | |
| GRAND TOTAL | | | | 2348.2 | |

CONNECTOR TABLE

| LABEL | TYPE | FUNCTION |
|-------|-----------|---------------------------------|
| J1 | ALL WDMSP | ALL SIGNAL FEEDS TO CRYOHARNESS |
| J2 | | |
| J3 | | |
| J4 | | |
| J5 | | |
| J6 | | |
| J7 | | |
| J8 | | |
| J9 | | |
| J10 | | |
| J11 | | |
| J12 | | |
| J13 | | |
| J14 | | |
| J15 | | |
| J16 | | |
| J17 | | |
| J18 | | |
| J19 | | |
| J20 | | |
| J21 | | |
| J22 | | |
| J23 | | |
| J24 | | |
| J25 | ALL WDMSP | SIGNALS IN FROM DETECTORS |
| J26 | | |
| J27 | | |
| J28 | | |
| J29 | | |
| J30 | | |
| J31 | | |
| J32 | | |
| J33 | | |
| J34 | | |
| J35 | | |
| J36 | | |
| J37 | | |
| J38 | | |
| J39 | | |
| J40 | | |
| J41 | | |
| J42 | | |
| J43 | | |
| J44 | | |
| J45 | | |
| J46 | | |
| J47 | | |
| J48 | | |
| J49 | | |
| J50 | | |
| J51 | | |
| J52 | | |

| SPIRE MASTER DRAWING | |
|----------------------|----------|
| PROJECT MEMBER | APPROVED |
| PROJECT MANAGER | |
| SYSTEM ENG | |
| ELECTRONICS ENG | |
| PA GROUP | |
| STRESS ENG | |
| OPTICAL ENG | |
| THERMAL ENG | |
| MECHANICAL ENG | |

| C | 03-07-02 | KE-2953 | T. FROUD | | | MANUF |
|---|----------|--|----------|---------------------------------|-------|------------|
| ISSUE | DATE | MOD. No. | DRN. BY | CHKD. | APPD. | STATUS |
| TOLERANCES UNLESS STATED | | FINISH CLEAN REMOVE ALL BURRS | | ORIGINAL SCALE 1:1 DO NOT SCALE | | |
| ±0.2 mm ±0.3 | | SURFACE TEXTURE µm SEE DETAILS ✓ UNLESS STATED | | 0 50mm | | |
| MATERIAL & SPEC. SEE DETAILS | | | | | | |
| USED ON | | | | | | ©CLRC 2001 |
| CENTRAL LABORATORY OF THE RESEARCH COUNCILS | | | | | | |
| TITLE | | | | | | |
| 6 JFET RACK INTERFACE DRAWING | | | | | | |
| SPIRE | | | | | | |
| A 0-KE-0104-350-C | | | | | | 1 of 1 |